



DEPARTMENT OF REGULATORY AND ECONOMIC RESOURCES (RER)  
BOARD AND CODE ADMINISTRATION DIVISION

## NOTICE OF ACCEPTANCE (NOA)

MIAMI-DADE COUNTY  
PRODUCT CONTROL SECTION

11805 SW 26 Street, Room 208  
Miami, Florida 33175-2474  
T (786) 315-2590 F (786) 315-2599

[www.miamidade.gov/economy](http://www.miamidade.gov/economy)

**Clopay Corporation**  
**8585 Duke Boulevard**  
**Mason, OH 45040**

### SCOPE:

This NOA is being issued under the applicable rules and regulations governing the use of construction materials. The documentation submitted has been reviewed and accepted by Miami-Dade County RER-Product Control Section to be used in Miami Dade County and other areas where allowed by the Authority Having Jurisdiction (AHJ).

This NOA shall not be valid after the expiration date stated below. The Miami-Dade County Product Control Section (In Miami Dade County) and/or the AHJ (in areas other than Miami Dade County) reserve the right to have this product or material tested for quality assurance purposes. If this product or material fails to perform in the accepted manner, the manufacturer will incur the expense of such testing and the AHJ may immediately revoke, modify, or suspend the use of such product or material within their jurisdiction. RER reserves the right to revoke this acceptance if it is determined by Miami-Dade County Product Control Section that this product or material fails to meet the requirements of the applicable building code.

This product is approved as described herein and has been designed to comply with the Florida Building Code, including the High Velocity Hurricane Zone.

**DESCRIPTION: Commercial Ribbed W6 DP37 Steel Sectional Garage Door up to 10'-2" Wide with Optional EPS Insulation**

**APPROVAL DOCUMENT:** Drawing No. Drawing No. **102445**, titled "Commercial Ribbed Steel Doors up to 10'-2" W", sheets 1 through 3 of 3, dated 10/10/2014, with revision 14 dated 09/06/23, prepared by Clopay Corporation, signed and sealed by Mark Westerfield, P.E., on 09/14/2023, bearing the Miami-Dade County Product Control revision stamp with the Notice of Acceptance number and the expiration date by the Miami-Dade County Product Control Section.

**MISSILE IMPACT RATING: Large and Small Missile Impact Resistant**

**LABELING:** A permanent label with the manufacturer's name or logo, manufacturing address, model number, the positive and negative design pressure rating, indicate impact rated if applicable, installation instruction drawing reference number, approval number (NOA), the applicable test standards, and the statement reading 'Miami-Dade County Product Control Approved' is to be located on the door's side track, bottom angle, or inner surface of a panel.

**RENEWAL** of this NOA shall be considered after a renewal application has been filed and there has been no change in the applicable building code negatively affecting the performance of this product.

**TERMINATION** of this NOA will occur after the expiration date or if there has been a revision or change in the materials, use, and/or manufacture of the product or process. Misuse of this NOA as an endorsement of any product, for sales, advertising or any other purposes shall automatically terminate this NOA. Failure to comply with any section of this NOA shall be cause for termination and removal of NOA.

**ADVERTISEMENT:** The NOA number preceded by the words Miami-Dade County, Florida, and followed by the expiration date may be displayed in advertising literature. If any portion of the NOA is displayed, then it shall be done in its entirety.

**INSPECTION:** A copy of this entire NOA shall be provided to the user by the manufacturer or its distributors and shall be available for inspection at the job site at the request of the Building Official.

This NOA revises NOA #20-0922.46 and consists of this page 1 and evidence pages E-1 and E-2, as well as approval document mentioned above.

The submitted documentation was reviewed by **Helmy A. Makar, P.E., M.S.**



*H. A. Makar*  
11/09/2023

NOA No 23-0928.44  
Expiration Date: 04/09/2025  
Approval Date: 11/09/2023

**NOTICE OF ACCEPTANCE: EVIDENCE SUBMITTED**

**1. Evidence submitted under previous NOAs**

**A. DRAWINGS**

1. Drawing No. **102445**, titled "Commercial Ribbed Steel Doors up to 10'-2" W", sheets 1 through 3 of 3, dated 10/10/2014, with revision 12 dated 01/03/2020, prepared by Clopay Corporation, signed and sealed by Mark Westerfield, P.E.  
**"Submitted under NOA # 20-0109.03"**

**B. TESTS**

1. Test reports on 1) Uniform Static Air Pressure Test, Loading per FBC TAS 202-94  
2) Large Missile Impact Test per FBC, TAS 201-94  
3) Cyclic Wind Pressure Loading per FBC, TAS 203-94  
4) Forced Entry Test, per FBC TAS 202-94  
5) Tensile Test per ASTM E8  
along with marked-up drawings and installation diagram of Clopay Model 524, 10'-2" wide x 8' high, 24 ga. steel garage doors, prepared by American Test Lab, Inc., Test Report No. **ATLNC 0709.01-13**, dated 02/05/2014, signed and sealed by David W. Johnson, P.E.  
**"Submitted under NOA # 14-1021.05"**
2. Test report on Salt Spray per ASTM B117 of painted G40 galvanized painted and G90 panels, prepared by Fenestration Testing Laboratory, Inc., Test Report No. **7890**, dated 10/01/2014, signed by Idalmis Ortega, P.E. **"Submitted under NOA # 14-1021.05"**

**C. CALCULATIONS**

1. Anchoring calculations prepared by Clopay Building Products Company, dated 10/10/2014, signed and sealed by Mark Westerfield, P.E. **"Submitted under NOA # 14-1021.05"**

**D. QUALITY ASSURANCE**

1. Miami-Dade Department of Regulatory and Economic Resources (RER)

**E. MATERIAL CERTIFICATIONS**

1. Test report on Ignition Properties of Plastics per ASTM D1929 of Premier Industries' Type I EPS, Report No. **3082959-500**, prepared by Intertek Testing Services, NA, Inc., dated 09/16/2005, signed by C. Anthony Peñaloza. **"Submitted under NOA # 14-1021.05"**
2. Test report on Surface Burning Characteristics, per ASTM E84 of Premier Industries' Type I EPS, Report No. **3082960-500**, prepared by Intertek Testing Services, NA, Inc., dated 10/04/2005, signed by Javier Trevino. **"Submitted under NOA # 14-1021.05"**

**F. STATEMENTS**

1. Statement letter of no financial interest issued by Clopay Building Products Company, dated 10/10/2014, signed and sealed by Mark Westerfield, P.E.  
**"Submitted under NOA # 14-1021.05"**
2. Statement letter of code conformance to 2010, 5<sup>th</sup> Edition (2014) and 6<sup>th</sup> Edition (2017) FBC issued by Clopay Building Products Company, dated 08/02/2017, signed and sealed by Mark Westerfield, P.E. **"Submitted under NOA # 17-0809.22"**
3. Certificate of amendment changing the company name from Clopay Building Products Company, Inc. to Clopay Corporation, issued by the State of Delaware, dated 08/27/2019.  
**"Submitted under NOA # 20-0109.03"**



**Helmy A. Makar, P.E., M.S.**  
**Product Control Section Supervisor**  
**NOA No 23-0928.44**

**Expiration Date: 04/09/2025**  
**Approval Date: 11/09/2023**



**NOTICE OF ACCEPTANCE: EVIDENCE SUBMITTED**

**2. EVIDENCE SUBMITTED UNDER PREVIOUS NOA #20-0922.46**

**A. DRAWINGS**

1. Drawing No. **102445**, titled "Commercial Ribbed Steel Doors up to 10'-2" W", sheets 1 through 3 of 3, dated 10/10/2014, with revision 13 dated 09/09/20, prepared by Clopay Corporation, signed and sealed by Mark Westerfield, P.E.

**B. TESTS**

1. None.

**C. CALCULATIONS**

1. None.

**D. QUALITY ASSURANCE**

1. Miami-Dade Department of Regulatory and Economic Resources (RER)

**E. MATERIAL CERTIFICATIONS**

1. None.

**F. STATEMENTS**

1. Statement letter of code conformance to the 6<sup>th</sup> Edition (2017) FBC and 7<sup>th</sup> Edition (2020) issued by Clopay Corporation, dated 09/15/2020, signed and sealed by Mark Westerfield, P.E.
2. Statement letter of no financial interest issued by Clopay Corporation, dated 09/15/2020, signed and sealed by Mark Westerfield, P.E.

**3. NEW EVIDENCE SUBMITTED**

**A. DRAWINGS**

1. Drawing No. **102445**, titled "Commercial Ribbed Steel Doors up to 10'-2" W", sheets 1 through 3 of 3, dated 10/10/2014, with revision 14 dated 09/06/23, prepared by Clopay Corporation, signed and sealed by Mark Westerfield, P.E., on 09/14/2023.

**B. TESTS**

1. None.

**C. CALCULATIONS**

1. None.

**D. QUALITY ASSURANCE**


1. Miami-Dade Department of Regulatory and Economic Resources (RER)

**E. MATERIAL CERTIFICATIONS**

1. None.

**G. STATEMENTS**

1. Statement letter of code conformance to the 8<sup>th</sup> Edition (2023) FBC and 7<sup>th</sup> Edition (2020) issued by Clopay Corporation, dated 09/15/2023, signed and sealed by Mark Westerfield, P.E.

  
\_\_\_\_\_  
**Helmy A. Makar, P.E., M.S.**  
**Product Control Section Supervisor**  
**NOA No 23-0928.44**  
**Expiration Date: 04/09/2025**  
**Approval Date: 11/09/2023**

CLOPAY / IDEAL / HOLMES  
524 / C4ST / 224 / 24GA 1-7/8" RIBBED  
524V / C4SV / 224V / 24GA 1-7/8" RIBBED INSULATION  
524S / C4SS / 224X / 24GA 1-7/8" RIBBED INSULATION WITH STEEL BACKER  
520 / COST / --- / 20GA 1-7/8" RIBBED  
520S / COSS / --- / 20GA 1-7/8" RIBBED INSULATION WITH STEEL BACKER

SHEET:  
1 OF 3

REVISIONS

| REV. NO. | ZONE: | DATE:   | ECN NO. | APPVD: | DESCRIPTION   |
|----------|-------|---------|---------|--------|---|
| 09       | B2    | 2/2/15  | -       | MWW    | REVISED CENTER STILE PLACEMENT CHART                      |
| 10       | -     | 4/06/15 | -       | MWW    | ADDED CODE COMPLIANCE STATEMENT                           |
| 11       | -     | 7/17/17 | -       | MWW    | UPDATED CODE COMPLIANCE STATEMENT TO ADD 6TH EDITION FBC. |
| 12       | -     | 1/03/20 | -       | MWW    | UPDATED TITLE BLOCK                                       |
| 13       | -     | 9/9/20  | -       | SH     | UPDATED CODE COMPLIANCE STATEMENT TO 7TH EDITION FBC      |
| 14       | -     | 9/6/23  | -       | JDW    | UPDATED CODE COMPLIANCE STATEMENT TO ADD 8TH EDITION FBC  |

3" x 20 GA. GALV. STEEL U-BARS ARRANGED IN A 2-1-2-1 PATTERN (SEE TABLE 1)  
U-BARS ATTACHED AT EACH STILE LOCATION WITH  
(2) 1/4" x 3/4" SELF-TAPPING SCREWS

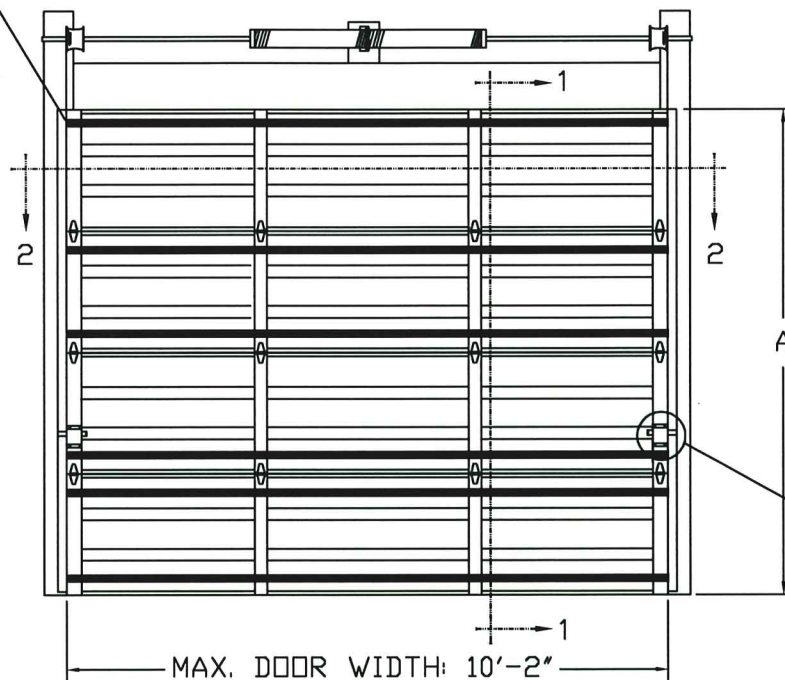
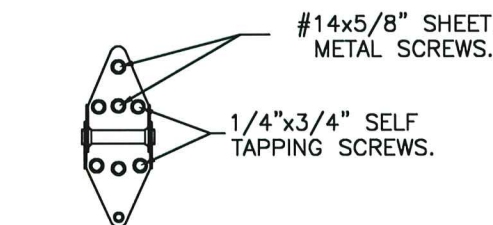


TABLE 1

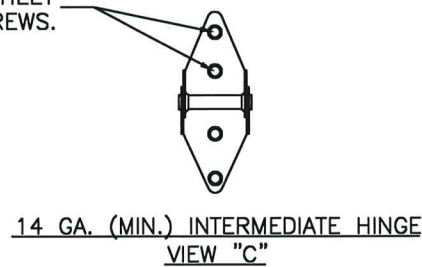
| DOOR HEIGHT    | TOTAL U-BARS REQUIRED |
|----------------|-----------------------|
| 4'3" TO 6'0"   | 5                     |
| 6'3" TO 8'0"   | 6                     |
| 8'3" TO 10'0"  | 8                     |
| 10'3" TO 12'0" | 9                     |
| 12'3" TO 14'0" | 11                    |
| 14'3" TO 16'0" | 12                    |
| 16'3" TO 18'0" | 14                    |

| DOOR HEIGHT 'A'    | NUMBER OF SECTIONS |
|--------------------|--------------------|
| UP TO 8'-0"        | 4                  |
| 8'-3" THRU 10'-0"  | 5                  |
| 10'-3" THRU 12'-0" | 6                  |
| 12'-3" THRU 14'-0" | 7                  |
| 14'-3" THRU 16'-0" | 8                  |
| 16'-3" THRU 18'-0" | 9                  |

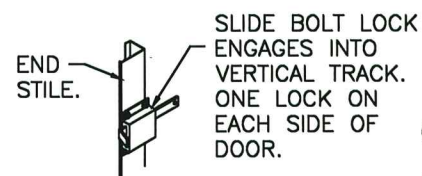
| DOOR WIDTH        | NUMBER OF CENTER STILES |
|-------------------|-------------------------|
| UP TO 7'-6"       | 1                       |
| 7'-7" THRU 10'-2" | 2                       |



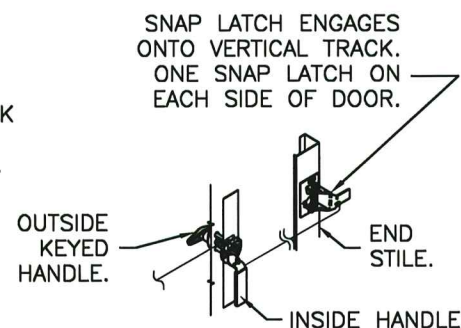
14 GA. END HINGES  
VIEW "B"



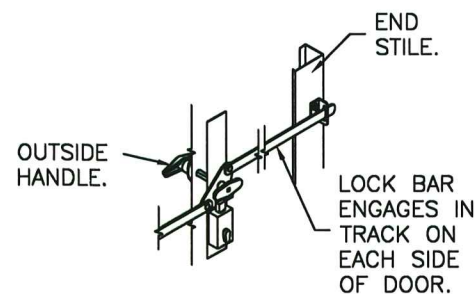
14 GA. (MIN.) INTERMEDIATE HINGE  
VIEW "C"



INSIDE SLIDE BOLT  
LOCK OPTION.



OUTSIDE KEYED LOCK WITH  
SNAP LATCH LOCK OPTION.



OUTSIDE KEYED LOCK WITH  
LOCK BAR LOCKING.

DESIGN LOADS: +37.0 P.S.F. & -42.0 P.S.F.

Unless Stated Otherwise  
TOLERANCES are  
.0 = ±.031  
.00 = ±.015  
.000 = ±.005  
.0000 = ±.001  
Degrees = ±1/2°

Unless Stated Otherwise  
DIMENSIONS ARE IN INCHES.

PRODUCT REVISED  
as complying with the Florida  
Building Code  
Acceptance No. 23-0928.44  
Expiration Date 04/09/2025  
By *Heidi A. Maher*  
Miami Date Product Control

THIS PRODUCT CONFORMS  
TO THE REQUIREMENTS OF  
7TH AND 8TH EDITION OF  
THE FLORIDA BUILDING  
CODE

MANUFACTURING PRODUCT CODE  
C-PAN-1E448

PART NO.: N/A

WINDLOAD RATING  
W6 DP37

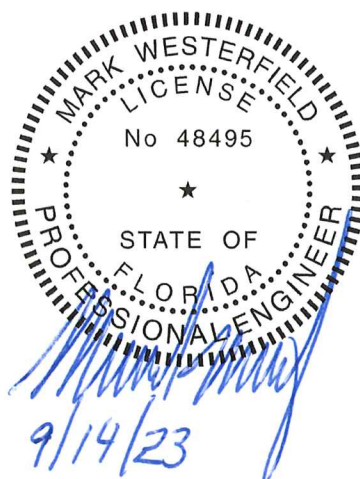
8585 Duke Boulevard  
Mason, OH 45040 USA  
Tel. No. 513-770-4800  
Fax No. 513-770-4853

DESCRIPTION: COMMERCIAL RIBBED STEEL DOORS UP TO 10'2"W

DRAWN BY: RJK DATE: 10/15/01 SCALE: NTS DWG. B

CHECKED BY: MWW DATE: 10/10/14 SHEET 1 OF 3 SIZE

DWG. NO.: 102445 VER: M-D



DESIGN ENGINEER:  
MARK WESTERFIELD, P.E.  
FLORIDA P.E. #48495



CLOPAY / IDEAL / HOLMES  
524 / C4ST / 224 / 24GA 1-7/8" RIBBED  
524V / C4SV / 224V / 24GA 1-7/8" RIBBED INSULATION  
524S / C4SS / 224X / 24GA 1-7/8" RIBBED INSULATION WITH STEEL BACKER  
520 / COST / --- / 20GA 1-7/8" RIBBED  
520S / COSS / --- / 20GA 1-7/8" RIBBED INSULATION WITH STEEL BACKER

SHEET:  
2 OF 3

REVISIONS

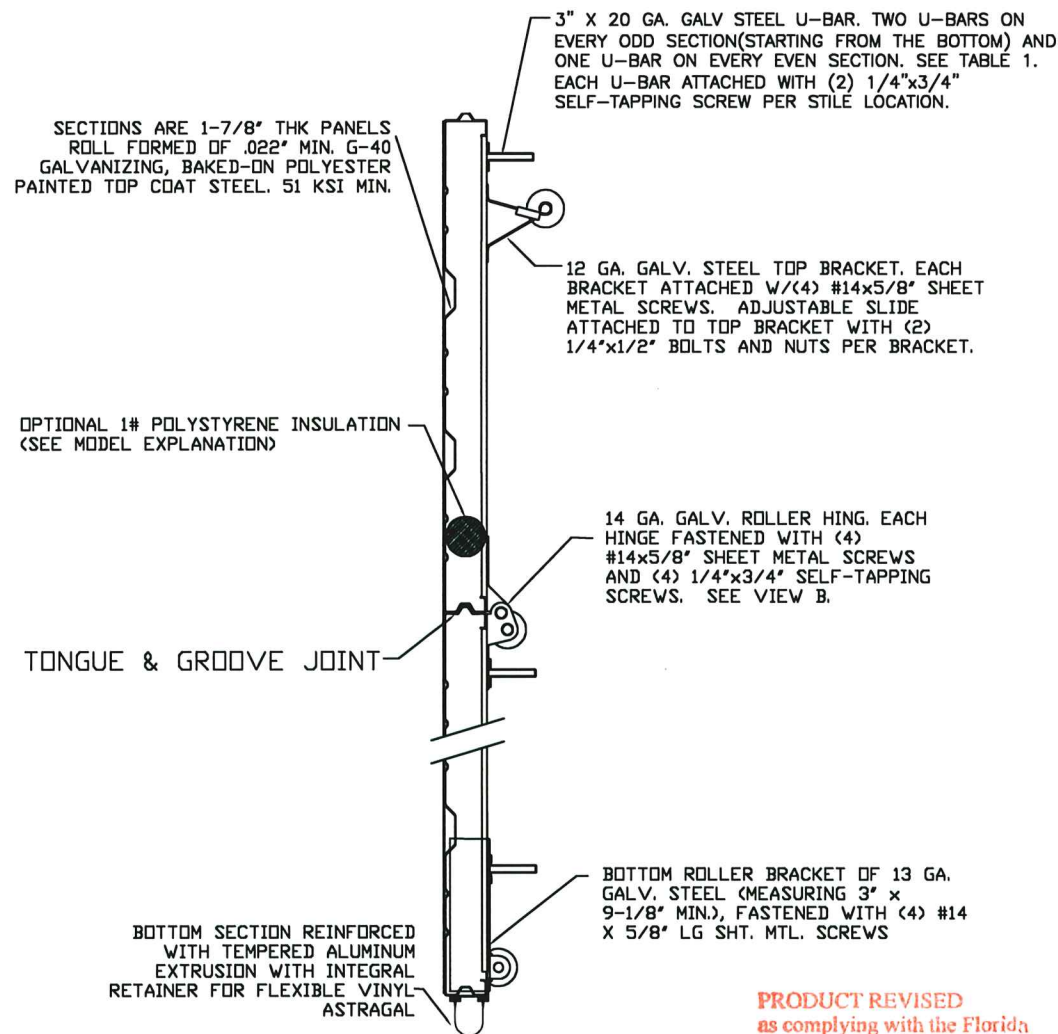
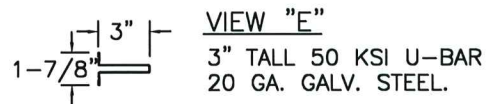
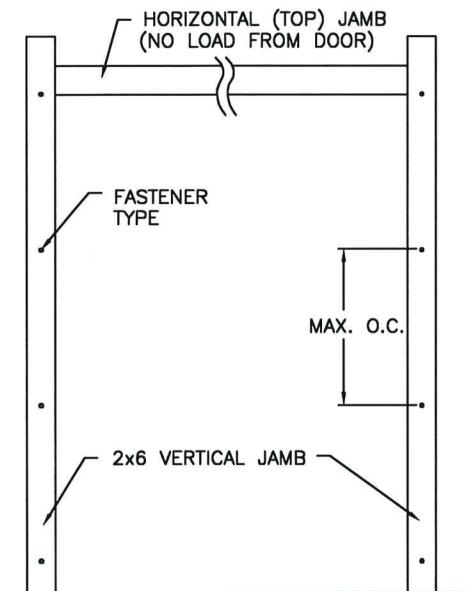
| REV. NO. | ZONE: | DATE: | ECN NO. | APPVD: | DESCRIPTION                        |
|----------|-------|-------|---------|--------|------------------------------------|
| 14       | -     | -     | -       | -      | SEE REVISION HISTORY ON SHEET ONE. |

JAMB TO SUPPORTING STRUCTURE ATTACHMENT

NOTES:

1. ALL THE LOAD FROM THE DOOR IS TRANSFERRED TO THE TRACK AND THEN FROM THE TRACK TO THE 2x6 VERTICAL SYP (GRADE #2 OR BETTER) JAMBS. NO LOAD FROM THE DOOR IS TRANSFERRED TO THE HORIZONTAL (TOP) JAMB.
2. EACH VERTICAL JAMB SEES A MAXIMUM DESIGN LOAD OF +185 LB & -220 LB. PER LINEAR FOOT OF JAMB.
3. ALL JAMB FASTENERS MAY BE (BUT ARE NOT REQUIRED TO BE) COUNTERSUNK TO PROVIDE A FLUSH MOUNTING SURFACE.
4. A 1/3 STRESS INCREASE FOR WIND LOAD WAS NOT USED IN THE CALCULATION OF ALLOWABLE LOADS FOR ANCHORS AND FASTENERS FOR STEEL, CONCRETE AND MASONRY.

NOTE: 2x6 WOOD JAMBS ARE NOT REQUIRED WITH CONTINUOUS ANGLE MOUNT TRACK. HOWEVER, IF DESIRED ON STEEL JAMBS OR CONCRETE OR BLOCK WALLS, APPROVED FASTENERS AS DETAILED BELOW SHOULD BE INCREASED IN LENGTH BY 1-1/2" AND INSTALLED DIRECTLY THROUGH THE ANGLE AND 2x6 WOOD JAMBS INTO THE STEEL JAMBS OR CONCRETE OR BLOCK WALLS. ANCHORS CAN BE (BUT ARE NOT REQUIRED TO BE) COUNTERSUNK TO PROVIDE A FLUSH MOUNTING SURFACE. CONTINUOUS ANGLE TRACK CAN BE ANCHORED DIRECTLY TO GROUT REINFORCED BLOCK WALL OR 3,000 PSI MIN. CONCRETE COLUMN OR STEEL JAMBS.



FASTENER ATTACHMENT TO SUPPORTING STRUCTURE SCHEDULES

| BUILDING TYPE            | FASTENER TYPE  | MAXIMUM ON-CENTER DISTANCE BETWEEN FASTENERS* | STEEL WASHERS REQUIRED? |
|--------------------------|--|---|-------------------------|
| HOLLOW BLOCK WALL        | 1/4" x 1-1/4" MIN. EMBED ULTRACON CONCRETE ANCHOR                    | 9"  | 1" O.D.                 |
| GROUT FILLED BLOCK WALL  | 1/4" x 1-3/4" MIN. EMBED ULTRACON CONCRETE ANCHOR                    | 14-3/4"                                       | 1" O.D.                 |
| 2000 PSI MIN. CONCRETE   | 1/4" x 1" MIN. EMBED ULTRACON CONCRETE ANCHOR                        | 12-3/4"                                       | 1" O.D.                 |
| 2000 PSI MIN. CONCRETE   | 1/4" x 1" MIN. EMBED TAPCON CONCRETE ANCHOR                          | 11"   | 1" O.D.                 |
| 2000 PSI MIN. CONCRETE   | 3/8" x 1-3/4" MIN. EMBED WEJ-IT ANKR TITE SLEEVE ANCHOR              | 24"   | INCLUDED                |
| 4000 PSI MIN. CONCRETE   | 3/8" x 1-3/4" MIN. EMBED WEJ-IT ANKR TITE SLEEVE ANCHOR              | 24"   | INCLUDED                |
| WOOD FRAME (SYP 0.55 SG) | 1/2" x 3" LAG SCREW (ASTM A307, GRADE A) 1-5/8" EMBED INTO STRUCTURE | 24"   | 1" O.D.                 |
| 14GA STEEL (0.060" MIN.) | 1/4"-14 x 1" ITW BUILDDEX TEKS SELF-DRILLING FASTENER                | 12-1/4"                                       | 1" O.D.                 |
| 12GA STEEL (0.105" MIN.) | 1/4"-14 x 1" ITW BUILDDEX TEKS SELF-DRILLING FASTENER                | 21-1/2"                                       | 1" O.D.                 |
| 1/8" STEEL               | 1/4"-14 x 1" ITW BUILDDEX TEKS SELF-DRILLING FASTENER                | 24"   | 1" O.D.                 |

\* FIRST (BOTTOM) ANCHOR STARTING AT NO MORE THAN HALF OF THE MAXIMUM ON-CENTER DISTANCE. HIGHEST ANCHOR INSTALLED AT LEAST AS HIGH AS THE DOOR OPENING.  
CLOPAY DOES NOT SUPPLY JAMB ATTACHMENT FASTENERS.  
MINIMUM DISTANCE BETWEEN CENTER OF ANCHOR AND EDGE OF CONCRETE BLOCK: 2-1/2", EXCLUDING STUCCO THICKNESS.

SECTION A-A (SIDE VIEW)

PRODUCT REVISED  
as complying with the Florida  
Building Code  
Acceptance No. 23-0928-44  
Expiration Date 04/09/2025  
By *[Signature]*  
Miami Door Product Control

DESIGN LOADS: +37.0 P.S.F. & -42.0 P.S.F.

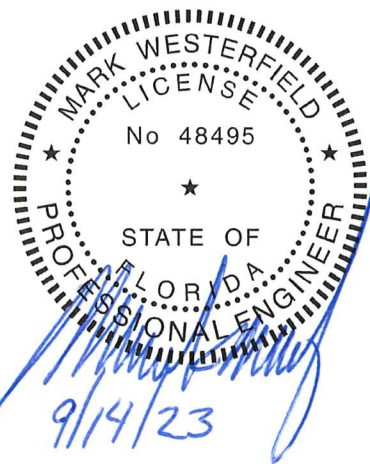
Unless Stated Otherwise  
TOLERANCES are  
.0 = ±.031  
.00 = ±.015  
.000 = ±.005  
.0000 = ±.001  
Degrees = ±1/2°  
Unless Stated Otherwise  
DIMENSIONS ARE IN INCHES.

**Clopay**  
CORPORATION  
8585 Duke Boulevard  
Mason, OH 45040 USA  
Tel. No. 513-770-4800  
Fax No. 513-770-4853

MANUFACTURING PRODUCT CODE  
C-PAN-1E448  
PART NO.: N/A

WINDLOAD RATING  
W6 DP37

DESCRIPTION: COMMERCIAL RIBBED STEEL DOORS UP TO 10'2"W  
DRAWN BY: RJK DATE: 10/15/01 SCALE: NTS DWG. B  
CHECKED BY: MWW DATE: 10/10/14 SHEET 2 OF 3 SIZE B  
DWG. NO.: 102445 VER: M-D



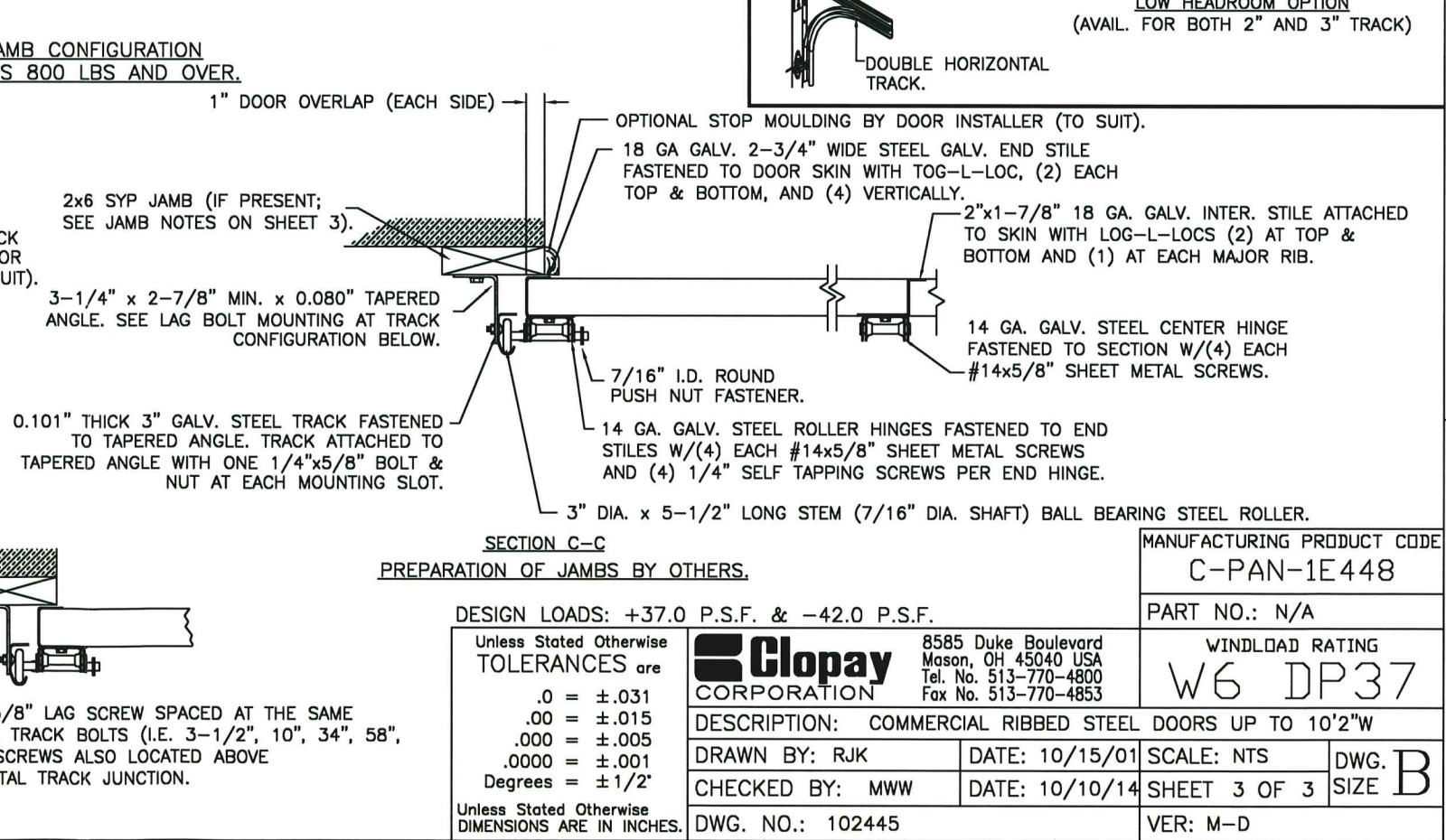
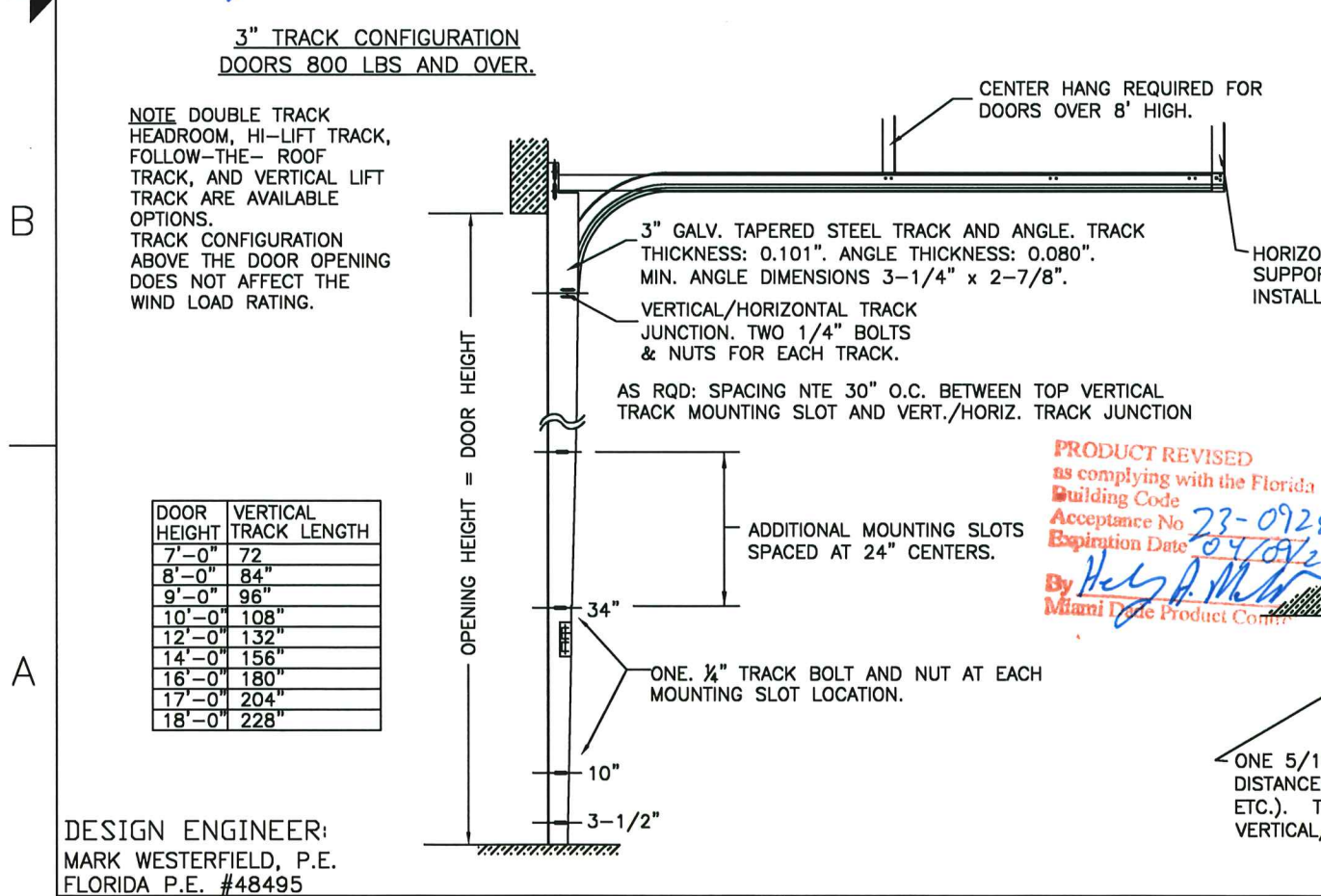
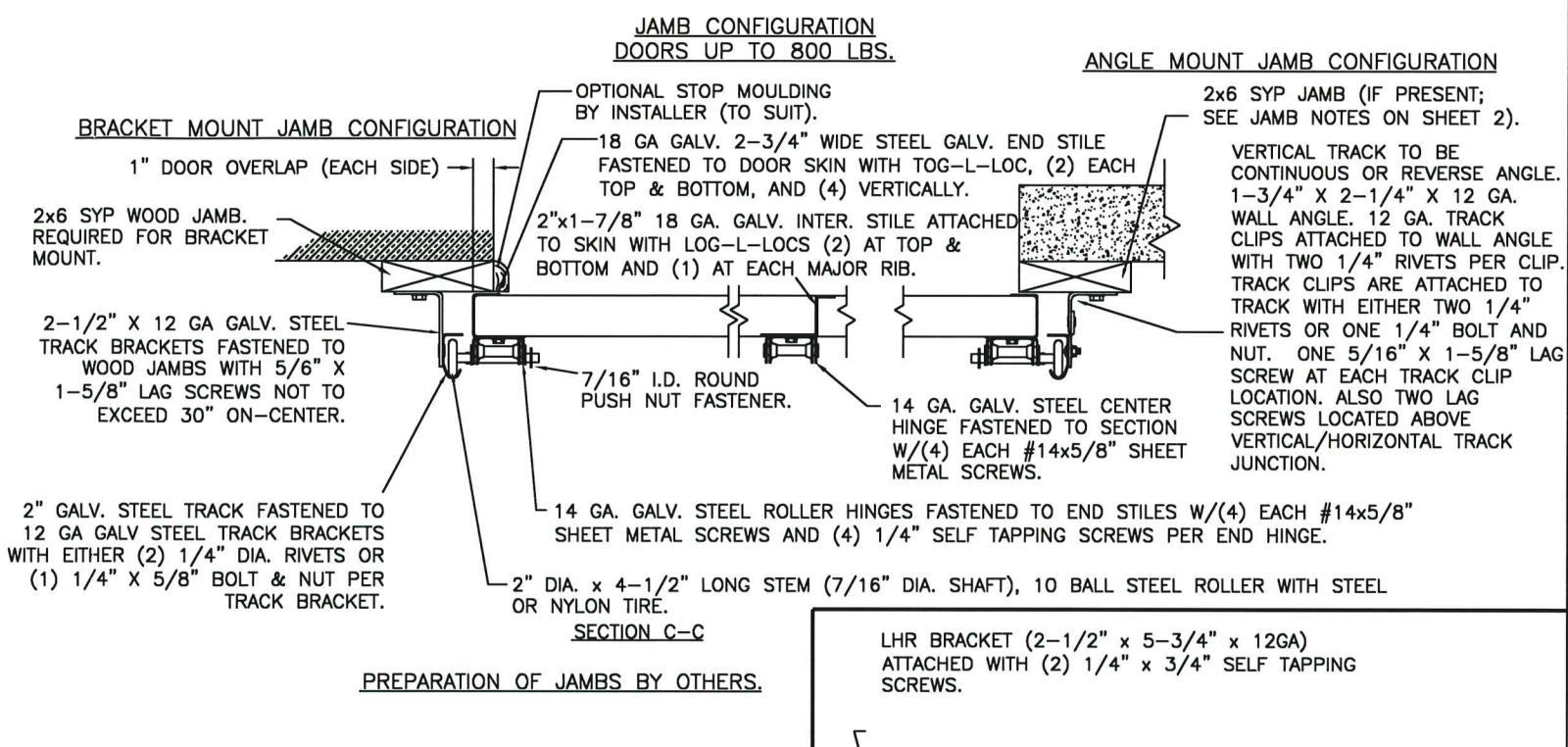
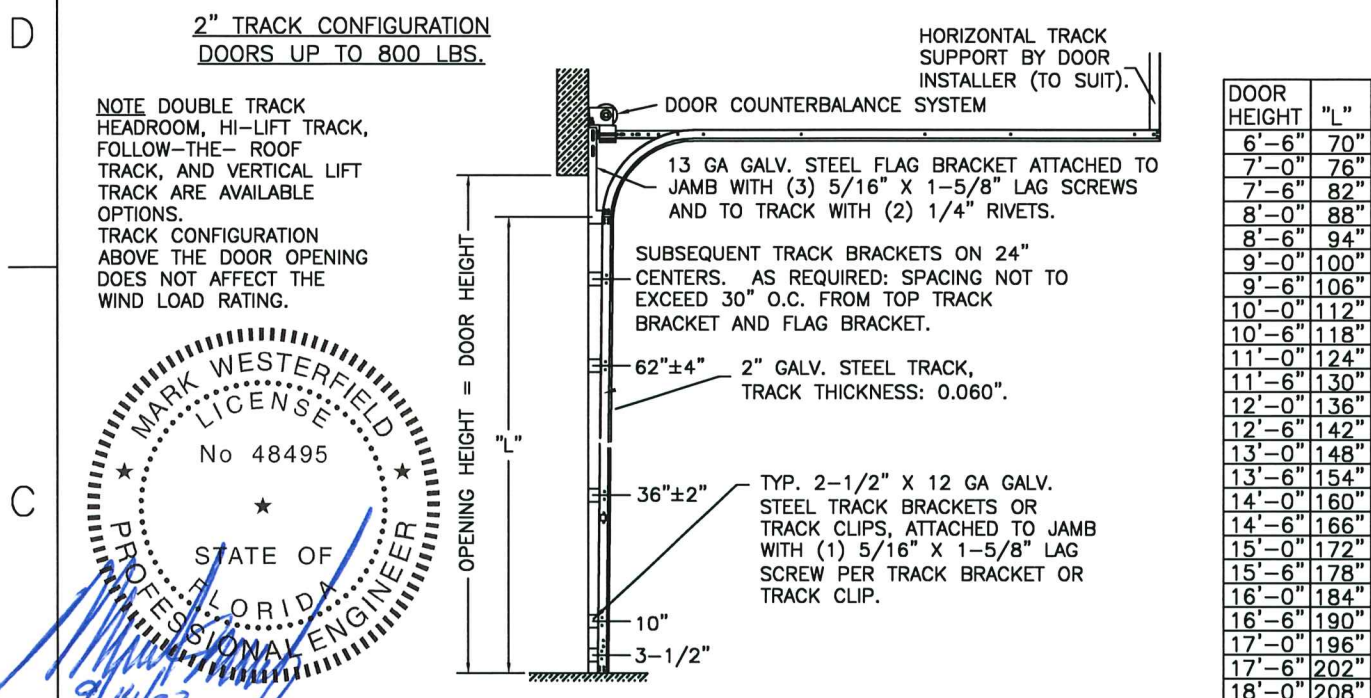
DESIGN ENGINEER:  
MARK WESTERFIELD, P.E.  
FLORIDA P.E. #48495



CLOPAY / IDEAL / HOLMES  
524 / C4ST / 224 / 24GA 1-7/8" RIBBED  
524V / C4SV / 224V / 24GA 1-7/8" RIBBED INSULATION  
524S / C4SS / 224X / 24GA 1-7/8" RIBBED INSULATION WITH STEEL BACKER  
520 / C0ST / --- / 20GA 1-7/8" RIBBED  
520S / C0SS / --- / 20GA 1-7/8" RIBBED INSULATION WITH STEEL BACKER

SHEET:  
3 OF 3

| REVISIONS |       |       |         |        |  | DESCRIPTION                        |
|-----------|-------|-------|---------|--------|--|------------------------------------|
| REV. NO.  | ZONE: | DATE: | ECN NO. | APPVD: |  |                                    |
| 14        | -     | -     | -       | -      |  | SEE REVISION HISTORY ON SHEET ONE. |



DESIGN ENGINEER:  
MARK WESTERFIELD, P.E.  
FLORIDA P.E. #48495