



DEPARTMENT OF REGULATORY AND ECONOMIC RESOURCES (RER)
BOARD AND CODE ADMINISTRATION DIVISION

NOTICE OF ACCEPTANCE (NOA)

MIAMI-DADE COUNTY
PRODUCT CONTROL SECTION

11805 SW 26 Street, Room 208
Miami, Florida 33175-2474
T (786) 315-2590 F (786) 315-2599

www.miamidade.gov/economy

Clopay Corporation
8585 Duke Boulevard
Mason, OH 45040

SCOPE:

This NOA is being issued under the applicable rules and regulations governing the use of construction materials. The documentation submitted has been reviewed and accepted by Miami-Dade County RER-Product Control Section to be used in Miami Dade County and other areas where allowed by the Authority Having Jurisdiction (AHJ).

This NOA shall not be valid after the expiration date stated below. The Miami-Dade County Product Control Section (in Miami Dade County) and/or the AHJ (in areas other than Miami Dade County) reserve the right to have this product or material tested for quality assurance purposes. If this product or material fails to perform in the accepted manner, the manufacturer will incur the expense of such testing and the AHJ may immediately revoke, modify, or suspend the use of such product or material within their jurisdiction. RER reserves the right to revoke this acceptance, if it is determined by Miami-Dade County Product Control Section that this product or material fails to meet the requirements of the applicable building code.

This product is approved as described herein and has been designed to comply with the Florida Building Code, including the High Velocity Hurricane Zone.

DESCRIPTION: Commercial Ribbed W6 DP38T Steel Sectional Garage Door up to 16'-2" Wide

APPROVAL DOCUMENT: Drawing No. **104858**, titled "Commercial Ribbed Doors up to 16'2" W", sheets 1 through 3 of 3, dated 10/17/2014, with revision 6 dated 09/06/2023, prepared by Clopay Corporation, signed and sealed by Mark Westerfield, P.E., on 09/14/2023, bearing the Miami-Dade County Product Control revision stamp with the Notice of Acceptance number and expiration date by the Miami-Dade County Product Control Section.

MISSILE IMPACT RATING: Large and Small Missile Impact Resistant

LABELING: A permanent label with the manufacturer's name or logo, manufacturing address, model number, the positive and negative design pressure rating, indicate impact rated if applicable, installation instruction drawing reference number, approval number (NOA), the applicable test standards, and the statement reading 'Miami-Dade County Product Control Approved' is to be located on the door's side track, bottom angle, or inner surface of a panel.

RENEWAL of this NOA shall be considered after a renewal application has been filed and there has been no change in the applicable building code negatively affecting the performance of this product.

TERMINATION of this NOA will occur after the expiration date or if there has been a revision or change in the materials, use, and/or manufacture of the product or process. Misuse of this NOA as an endorsement of any product, for sales, advertising or any other purposes shall automatically terminate this NOA. Failure to comply with any section of this NOA shall be cause for termination and removal of NOA.

ADVERTISEMENT: The NOA number preceded by the words Miami-Dade County, Florida, and followed by the expiration date may be displayed in advertising literature. If any portion of the NOA is displayed, then it shall be done in its entirety.

INSPECTION: A copy of this entire NOA shall be provided to the user by the manufacturer or its distributors and shall be available for inspection at the job site at the request of the Building Official.

This NOA **revises NOA #20-0922.47** and consists of this page 1 and evidence pages E-1 and E-2, as well as approval document mentioned above.

The submitted documentation was reviewed by **Helmy A. Makar, P.E., M.S.**



Helmy A. Makar
12/28/2023

NOA No 23-0928.45
Expiration Date: 04/16/2025
Approval Date: 12/28/2023

NOTICE OF ACCEPTANCE: EVIDENCE SUBMITTED

1. EVIDENCE SUBMITTED UNDER PREVIOUS NOAs

A. DRAWINGS

1. Drawing No. **104858**, titled "Commercial Ribbed Doors up to 16'2" W", sheets 1 through 3 of 3, dated 02/12/2014, with revision 4 dated 01/08/2020, prepared by Clopay Building Products Company, signed and sealed by Mark Westerfield, P.E.
"Submitted under NOA # 20-0115.01"

B. TESTS

1. Test reports on 1) Uniform Static Air Pressure Test, Loading per FBC TAS 202-94
2) Large Missile Impact Test per FBC, TAS 201-94
3) Cyclic Wind Pressure Loading per FBC, TAS 203-94
4) Forced Entry Test, per FBC TAS 202-94
5) Tensile Test per ASTM E8

Along with marked-up drawings and installation diagram of Clopay 16'-2"x 8', 24 ga. steel garage door, Model 524, prepared by American Test Lab, Inc., Test Report No. **ATLNC 0513.01-13**, dated 05/30/2013, signed and sealed by David W. Johnson, P.E.
"Submitted under NOA # 14-1105.02"

2. Test report on Salt Spray per ASTM B117 of painted G40 galvanized painted and G90 panels, prepared by Fenestration Testing Laboratory, Inc., Test Report No. **7890**, dated 10/01/2014, signed by Idalmis Ortega, P.E. *"Submitted under NOA # 14-1105.02"*

C. CALCULATIONS

1. Anchoring calculations prepared by Clopay Building Products Company, dated 10/22/2014, signed and sealed by Mark Westerfield, P.E. *"Submitted under NOA # 14-1105.02"*

D. QUALITY ASSURANCE

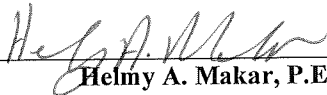
1. Miami-Dade Department of Regulatory and Economic Resources (RER)

E. MATERIAL CERTIFICATIONS

1. None.

F. STATEMENTS

1. Statement letter of no financial interest issued by Clopay Building Products Company, dated 10/31/2014, signed and sealed by Mark Westerfield, P.E.
"Submitted under NOA # 14-1105.02"
2. Statement letter of code conformance to 2010, 5th Edition (2014) and 6th Edition (2017) FBC issued by Clopay Building Products Company, dated 08/02/2017, signed and sealed by Mark Westerfield, P.E. *"Submitted under NOA # 17-0809.23"*
3. Certificate of amendment changing the company name from Clopay Building Products Company, Inc. to Clopay Corporation, issued by the State of Delaware, dated 08/27/2019.



Helmy A. Makar, P.E., M.S.
Product Control Section Supervisor
NOA No 23-0928.45
Expiration Date: 04/16/2025
Approval Date: 12/28/2023

Clopay Corporation

NOTICE OF ACCEPTANCE: EVIDENCE SUBMITTED

2. New evidence submitted

A. DRAWINGS

1. Drawing No. **104858**, titled "Commercial Ribbed Doors up to 16'2" W", sheets 1 through 3 of 3, dated 10/17/2014, with revision 5 dated 09/09/2020, prepared by Clopay Corporation, signed and sealed by Mark Westerfield, P.E.

B. TESTS

1. None.

C. CALCULATIONS

1. None.

D. QUALITY ASSURANCE

1. Miami-Dade Department of Regulatory and Economic Resources (RER)

E. MATERIAL CERTIFICATIONS

1. None.

F. STATEMENTS

1. Statement letter of code conformance to the 6th Edition (2017) FBC and 7th Edition (2020) FBC issued by Clopay Corporation, dated 09/15/2020, signed and sealed by Mark Westerfield, P.E.
2. Statement letter of no financial interest issued by Clopay Corporation, dated 09/15/2020, signed and sealed by Mark Westerfield, P.E.

3. NEW EVIDENCE SUBMITTED

A. DRAWINGS

1. Drawing No. **104858**, titled "Commercial Ribbed Doors up to 16'2" W", sheets 1 through 3 of 3, dated 10/17/2014, with revision 6 dated 09/06/2023, prepared by Clopay Corporation, signed and sealed by Mark Westerfield, P.E., on 09/14/2023

B. TESTS

1. None.

C. CALCULATIONS

1. None.

D. QUALITY ASSURANCE

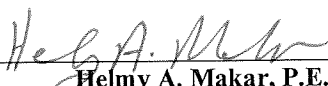
1. Miami-Dade Department of Regulatory and Economic Resources (RER)

E. MATERIAL CERTIFICATIONS

1. None.

G. STATEMENTS

1. Statement letter of code conformance to the 8th Edition (2023) FBC and 7th Edition (2020) FBC issued by Clopay Corporation, dated 09/15/2023, signed and sealed by Mark Westerfield, P.E.

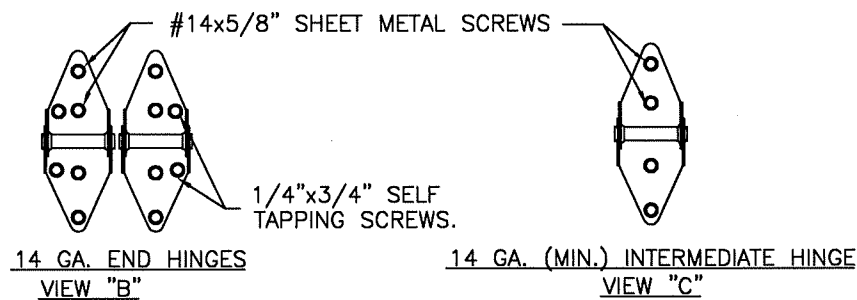
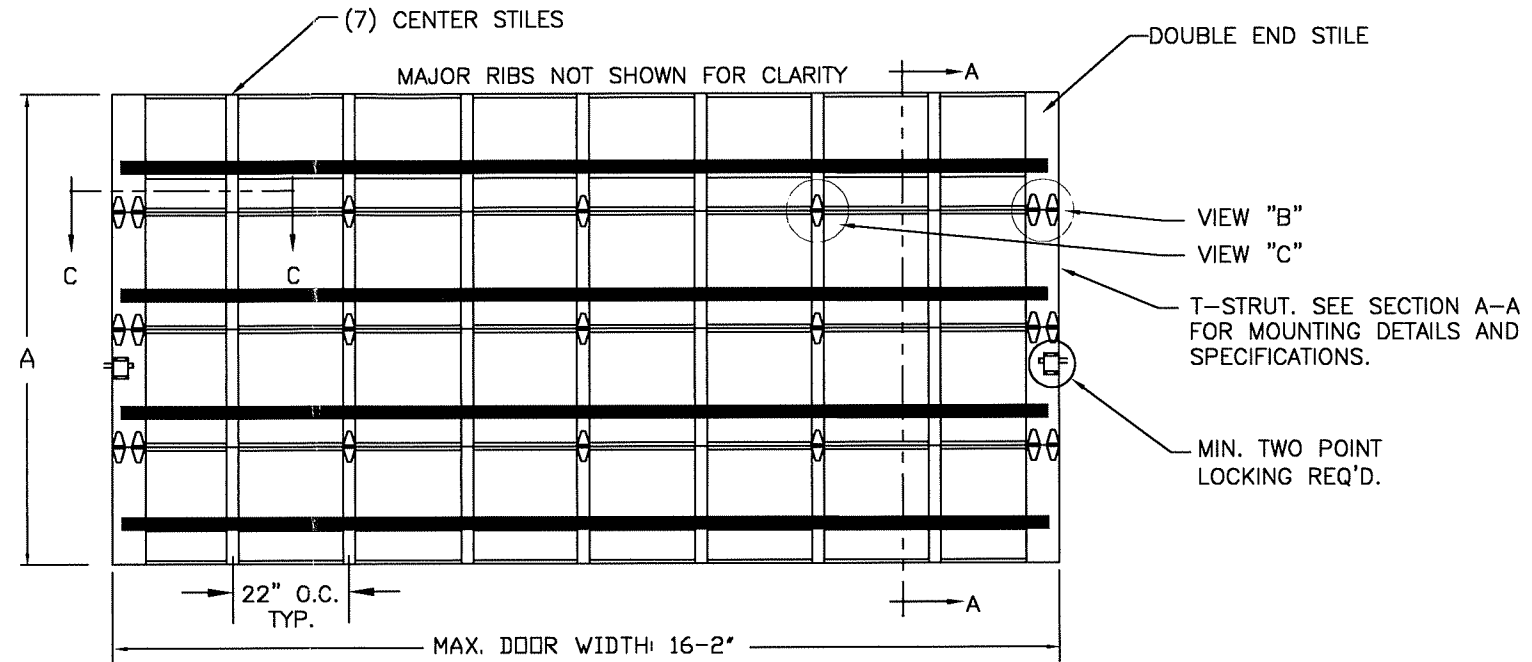


Helmy A. Makar, P.E., M.S.
Product Control Section Supervisor
NOA No 23-0928.45
Expiration Date: 04/16/2025
Approval Date: 12/28/2023

MODELS AVAILABLE (CLOPAY/ HOLMES/ IDEAL)
 524 (24 ga.), 520 (20 ga.) / 224 (24 ga.)/ C4ST (24 ga.), C0ST (20 ga.)

SHEET:
1 OF 3

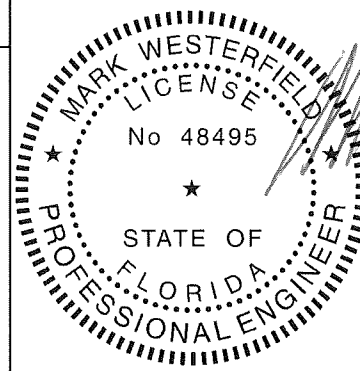
REVISIONS					
REV. NO.	ZONE:	DATE:	ECN NO.	APPVD:	DESCRIPTION
01	-	10/17/14	-	MWW	REVISED LAYOUT TO 3 PAGES; REPLACES DWG #10440
02	-	4/29/15	-	MWW	ADDED CODE COMPLIANCE STATEMENT.
03	-	7/17/17	-	MWW	UPDATED CODE COMPLIANCE STATEMENT TO ADD 6TH EDITION FBC.
04	-	1/8/20	-	MWW	UPDATED TITLE BLOCK
05	-	9/9/20	-	SH	UPDATED CODE COMPLIANCE STATEMENT TO 7TH EDITION FBC
06	-	9/6/23	-	JDW	UPDATED CODE COMPLIANCE STATEMENT TO ADD 8TH EDITION FBC



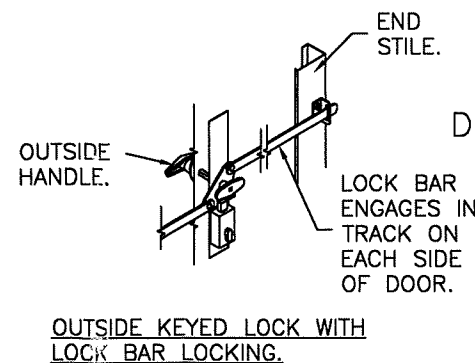
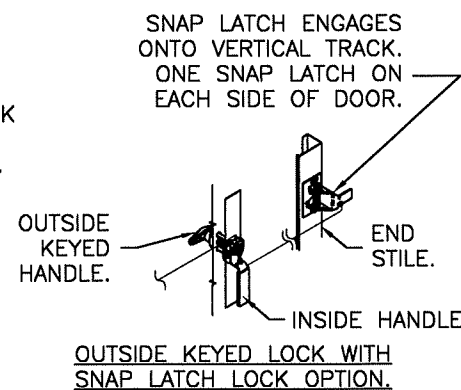
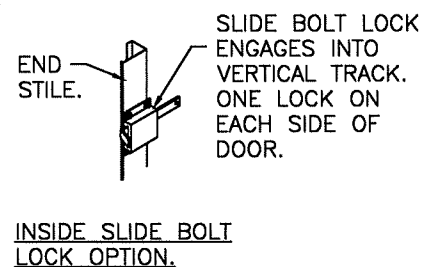
DOOR HEIGHT 'A'	NUMBER OF SECTIONS
UP TO 8'-0"	4
8'-3" THRU 10'-0"	5
10'-3" THRU 12'-0"	6
12'-3" THRU 14'-0"	7
14'-3" THRU 16'-0"	8
16'-3" THRU 18'-0"	9

PRODUCT REVISED
 as complying with the Florida:
 Building Code
 Acceptance No. 23-0928-45
 Expiration Date 04/16/2025
 By *[Signature]*
 Miami Code Product Control

THIS PRODUCT CONFORMS TO THE REQUIREMENTS OF 7TH AND 8TH EDITION OF THE FLORIDA BUILDING CODE



DESIGN ENGINEER:
 MARK WESTERFIELD, P.E.
 FLORIDA P.E. #48495



DESIGN LOADS: +38.0 P.S.F. & -42.0 P.S.F.

Unless Stated Otherwise
 TOLERANCES are
 .0 = ±.031
 .00 = ±.015
 .000 = ±.005
 .0000 = ±.001
 Degrees = ±1/2"
 Unless Stated Otherwise
 DIMENSIONS ARE IN INCHES.

Clopay
 CORPORATION
 8585 Duke Boulevard
 Mason, OH 45040 USA
 Tel. No. 513-770-4800
 Fax No. 513-770-4853

DESCRIPTION: COMMERCIAL RIBBED DOORS UP TO 16'2"W			
DRAWN BY: SH	DATE: 2/12/14	SCALE: NTS	DWG. SIZE B
CHECKED BY: MWW	DATE: 10/17/14	SHEET 1 OF 3	
DWG. NO.: 104858	VER: M-D		

MANUFACTURING PRODUCT CODE C-PAN-1E448
PART NO.: N/A

WINDLOAD RATING
W6 DP38T

MODELS AVAILABLE (CLOPAY/ HOLMES/ IDEAL)
 524 (24 ga.), 520 (20 ga.) / 224 (24 ga.)/ C4ST (24 ga.), COST (20 ga.)

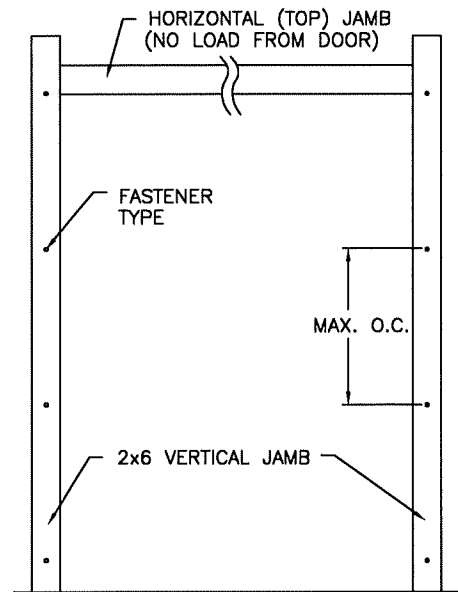
SHEET:
2 OF 3

REVISIONS					DESCRIPTION
REV. NO.	ZONE:	DATE:	ECN NO.	APPVD:	
06	-	-	-	-	SEE REVISION HISTORY ON SHEET ONE.

JAMB TO SUPPORTING STRUCTURE ATTACHMENT

- NOTES:**
1. ALL THE LOAD FROM THE DOOR IS TRANSFERRED TO THE TRACK AND THEN FROM THE TRACK TO THE 2x6 VERTICAL SYP (GRADE #2 OR BETTER) JAMBS. NO LOAD FROM THE DOOR IS TRANSFERRED TO THE HORIZONTAL (TOP) JAMB.
 2. EACH VERTICAL JAMB SEES A MAXIMUM DESIGN LOAD OF +304 LB & -336 LB. PER LINEAR FOOT OF JAMB.
 3. ALL JAMB FASTENERS MAY BE (BUT ARE NOT REQUIRED TO BE) COUNTERSUNK TO PROVIDE A FLUSH MOUNTING SURFACE.
 4. A 1/3 STRESS INCREASE FOR WIND LOAD WAS NOT USED IN THE CALCULATION OF ALLOWABLE LOADS FOR ANCHORS AND FASTENERS FOR STEEL, CONCRETE AND MASONRY.

NOTE: 2x6 WOOD JAMBS ARE NOT REQUIRED WITH CONTINUOUS ANGLE MOUNT TRACK. HOWEVER, IF DESIRED ON STEEL JAMBS OR CONCRETE OR BLOCK WALLS, APPROVED FASTENERS AS DETAILED BELOW SHOULD BE INCREASED IN LENGTH BY 1-1/2" AND INSTALLED DIRECTLY THROUGH THE ANGLE AND 2x6 WOOD JAMBS INTO THE STEEL JAMBS OR CONCRETE OR BLOCK WALLS. ANCHORS CAN BE (BUT ARE NOT REQUIRED TO BE) COUNTERSUNK TO PROVIDE A FLUSH MOUNTING SURFACE. CONTINUOUS ANGLE TRACK CAN BE ANCHORED DIRECTLY TO GROUT REINFORCED BLOCK WALL OR 3,000 PSI MIN. CONCRETE COLUMN OR STEEL JAMBS.



SECTIONS ARE 1-7/8" THICK
 PANELS ROLL FORMED OF .022" MIN.
 HOT DIPPED G-40 GALVANIZING,
 ROLL FORMED STEEL,
 MIN. YIELD STRENGTH 56.7 KSI

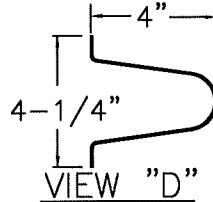
ADJUSTABLE TOP ROLLER BRACKET
 OF 12 GA. GALV. STEEL, INSTALLED
 ON DOOR WITH (4) #14 X 5/8" LG
 SHEET METAL SCREWS

ONE 4" T-STRUT PER
 SECTION. (SEE VIEW "D")
 EACH T-STRUT ATTACHED
 AT EACH STILE LOCATION
 WITH (2) 1/4"x3/4" SELF
 TAPPING SCREWS.

END HINGE. SEE DETAILS
 AT VIEW "B" ON SHEET 1.

TONGUE & GROOVE JOINT.

PRODUCT REVISED
 as complying with the Florida
 Building Code
 Acceptance No. _____
 Expiration Date _____
 By *Heidi D. Mason*
 Miami Data Product Control



4" TALL TAPER STRUT.
 0.062" MIN. GALV. STEEL,
 80 KSI. MIN.

(2) STACKED LHR BRACKETS USED
 AS INNER BOTTOM BRACKET (NOT
 SHOWN).

BOTTOM ROLLER BRACKET OF 12 GA.
 MIN. GALV. STEEL, FASTENED WITH
 (4) #14 X 5/8" LG SHT. MTL.
 SCREWS

BOTTOM SECTION REINFORCED
 WITH TEMPERED ALUMINUM
 EXTRUSION WITH INTEGRAL
 RETAINER FOR FLEXIBLE VINYL
 ASTRAGAL

SECTION A-A (SIDE VIEW)

FASTENER ATTACHMENT TO SUPPORTING STRUCTURE SCHEDULES

BUILDING TYPE	FASTENER TYPE	MAXIMUM ON-CENTER DISTANCE BETWEEN FASTENERS*	STEEL WASHERS REQUIRED?
HOLLOW BLOCK WALL	1/4" x 1-1/4" MIN. EMBED ULTRACON CONCRETE ANCHOR	5-1/2"	1" O.D.
GROUT FILLED BLOCK WALL	1/4" x 1-3/4" MIN. EMBED ULTRACON CONCRETE ANCHOR	9"	1" O.D.
2000 PSI MIN. CONCRETE	1/4" x 1" MIN. EMBED ULTRACON CONCRETE ANCHOR	7-3/4"	1" O.D.
2000 PSI MIN. CONCRETE	1/4" x 1" MIN. EMBED TAPCON CONCRETE ANCHOR	6-3/4"	1" O.D.
2000 PSI MIN. CONCRETE	3/8" x 1-3/4" MIN. EMBED WEJ-IT ANKR TITE SLEEVE ANCHOR	16-1/2"	INCLUDED
4000 PSI MIN. CONCRETE	3/8" x 1-3/4" MIN. EMBED WEJ-IT ANKR TITE SLEEVE ANCHOR	24"	INCLUDED
WOOD FRAME (SYP 0.55 SG)	1/2" x 3" LAG SCREW (ASTM A307, GRADE A) 1-5/8" EMBED INTO STRUCTURE	17-3/4"	1" O.D.
14GA STEEL (0.060" MIN.)	1/4"-14 x 1" ITW BUILDEX TEKS SELF-DRILLING FASTENER	7-1/2"	1" O.D.
12GA STEEL (0.105" MIN.)	1/4"-14 x 1" ITW BUILDEX TEKS SELF-DRILLING FASTENER	13"	1" O.D.
1/8" STEEL	1/4"-14 x 1" ITW BUILDEX TEKS SELF-DRILLING FASTENER	15-1/2"	1" O.D.

* FIRST (BOTTOM) ANCHOR STARTING AT NO MORE THAN HALF OF THE MAXIMUM ON-CENTER DISTANCE. HIGHEST ANCHOR INSTALLED AT LEAST AS HIGH AS THE DOOR OPENING.
 CLOPAY DOES NOT SUPPLY JAMB ATTACHMENT FASTENERS.
 MINIMUM DISTANCE BETWEEN CENTER OF ANCHOR AND EDGE OF CONCRETE BLOCK: 2-1/2", EXCLUDING STUCCO THICKNESS.

DESIGN LOADS: +38.0 P.S.F. & -42.0 P.S.F.

Unless Stated Otherwise
TOLERANCES are
 .0 = ±.031
 .00 = ±.015
 .000 = ±.005
 .0000 = ±.001
 Degrees = ±1/2"
 Unless Stated Otherwise
 DIMENSIONS ARE IN INCHES.

Clopay
 CORPORATION
 8585 Duke Boulevard
 Mason, OH 45040 USA
 Tel. No. 513-770-4800
 Fax No. 513-770-4853

MANUFACTURING PRODUCT CODE
C-PAN-1E448

PART NO.: N/A

WINDLOAD RATING
W6 DP38T

DESCRIPTION: COMMERCIAL RIBBED DOORS UP TO 16'2"W			
DRAWN BY: SH	DATE: 2/12/14	SCALE: NTS	DWG. SIZE B
CHECKED BY: MWW	DATE: 10/17/14	SHEET 2 OF 3	
DWG. NO.: 104858		VER: M-D	

DESIGN ENGINEER:
 MARK WESTERFIELD, P.E.
 FLORIDA P.E. #48495

MODELS AVAILABLE (CLOPAY/ HOLMES/ IDEAL)
 524 (24 ga.), 520 (20 ga.) / 224 (24 ga.)/ C4ST (24 ga.), COST (20 ga.)

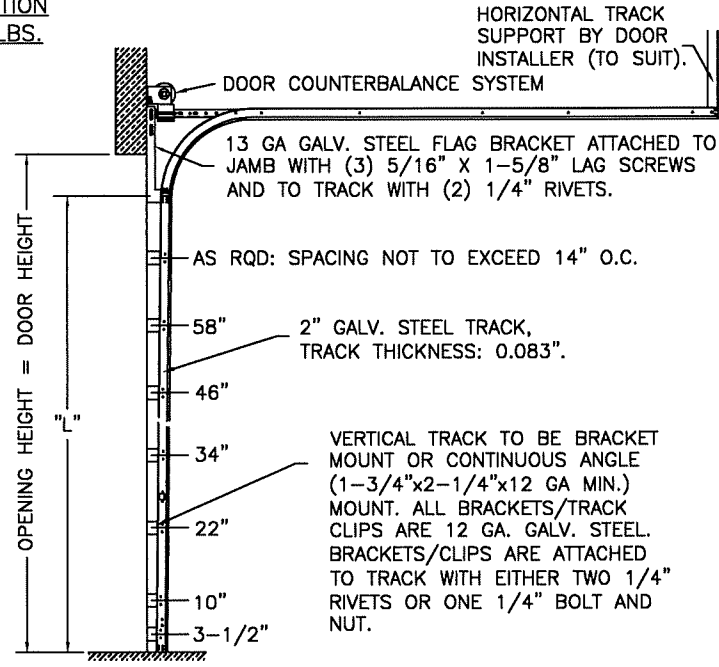
SHEET:
 3 OF 3

REVISIONS					DESCRIPTION
REV. NO.	ZONE:	DATE:	ECN NO.	APPVD:	
06	-	-	-	-	SEE REVISION HISTORY ON SHEET ONE.

ANGLE MOUNT JAMB CONFIGURATION

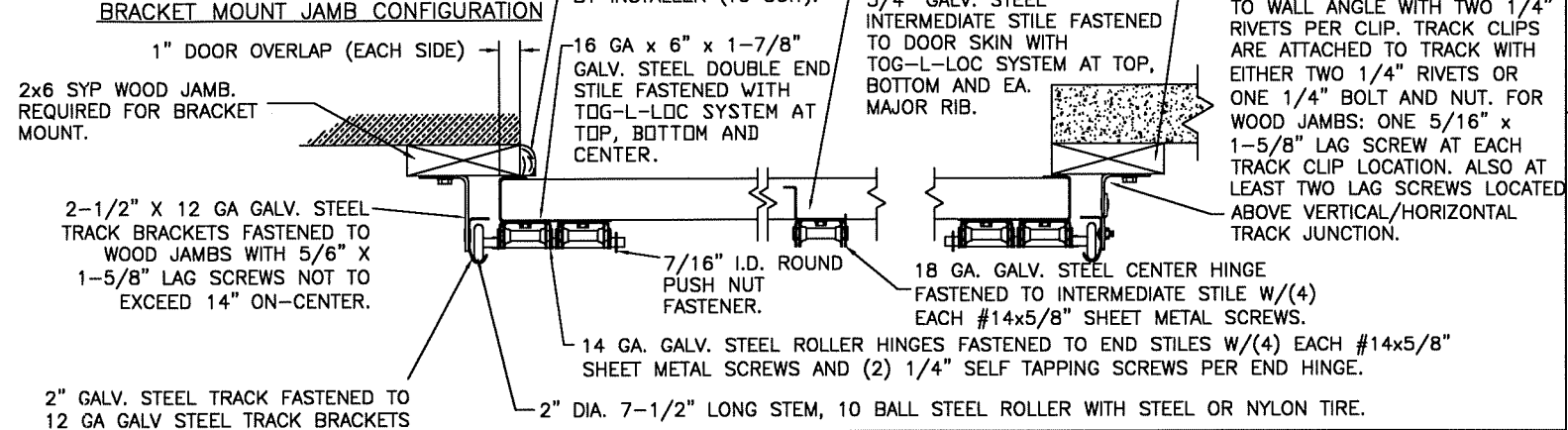
2" TRACK CONFIGURATION
 DOORS UP TO 800 LBS.

NOTE DOUBLE TRACK HEADROOM, HI-LIFT TRACK, FOLLOW-THE-ROOF TRACK, AND VERTICAL LIFT TRACK ARE AVAILABLE OPTIONS. TRACK CONFIGURATION ABOVE THE DOOR OPENING DOES NOT AFFECT THE WIND LOAD RATING.



DOOR HEIGHT	"L"
6'-6"	70"
7'-0"	76"
7'-6"	82"
8'-0"	88"
8'-6"	94"
9'-0"	100"
9'-6"	106"
10'-0"	112"
10'-6"	118"
11'-0"	124"
11'-6"	130"
12'-0"	136"
12'-6"	142"
13'-0"	148"
13'-6"	154"
14'-0"	160"
14'-6"	166"
15'-0"	172"
15'-6"	178"
16'-0"	184"
16'-6"	190"
17'-0"	196"
17'-6"	202"
18'-0"	208"

JAMB CONFIGURATION
 DOORS UP TO 800 LBS.



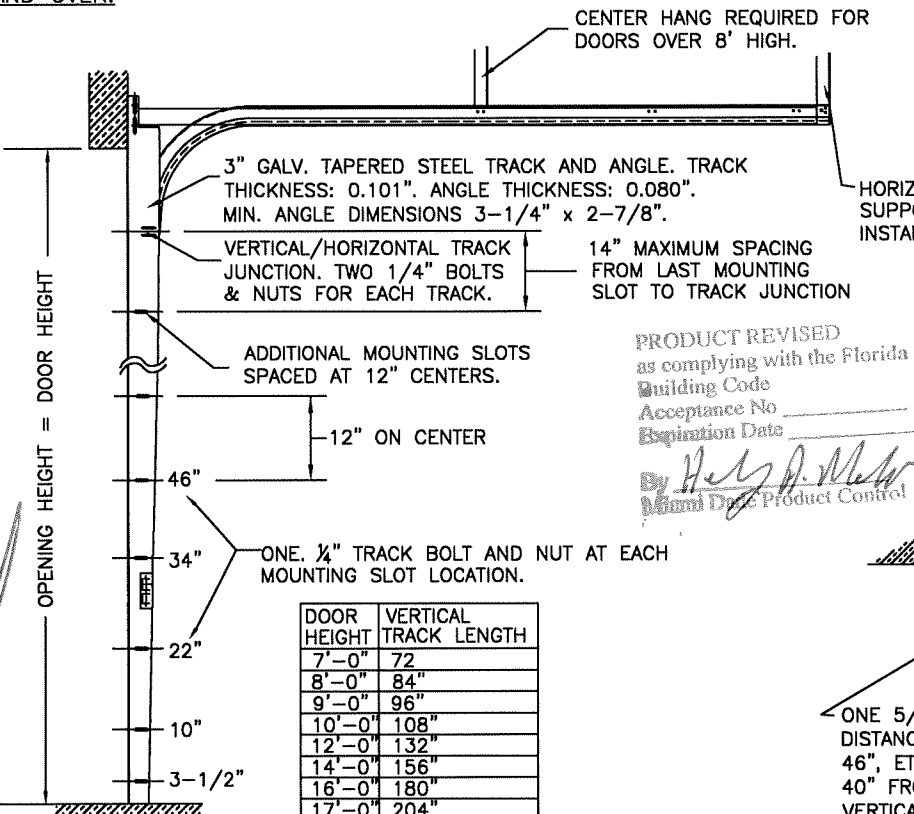
SECTION C-C

PREPARATION OF JAMBS BY OTHERS.

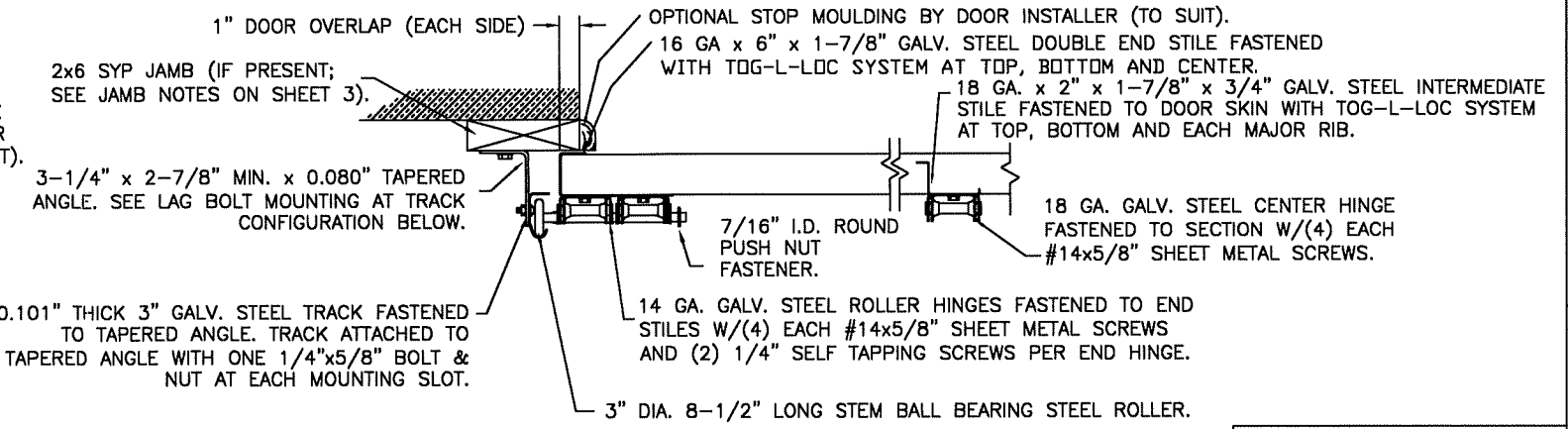
LHR BRACKET (2-1/2" x 5-3/4" x 12GA) ATTACHED WITH (2) 1/4" x 3/4" SELF TAPPING SCREWS. NOTE THAT LHR BRACKETS ARE ALSO USED WITH "DOUBLE END STILE" AS NOTED ON SHEET 2.

3" TRACK CONFIGURATION
 DOORS 800 LBS AND OVER.

NOTE DOUBLE TRACK HEADROOM, HI-LIFT TRACK, FOLLOW-THE-ROOF TRACK, AND VERTICAL LIFT TRACK ARE AVAILABLE OPTIONS. TRACK CONFIGURATION ABOVE THE DOOR OPENING DOES NOT AFFECT THE WIND LOAD RATING.



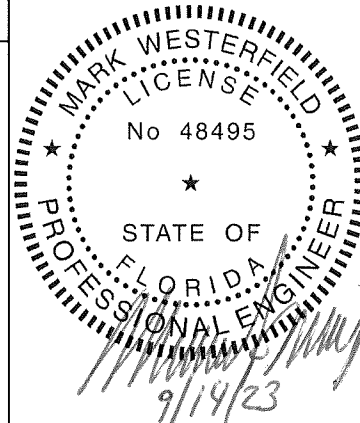
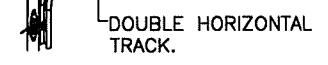
JAMB CONFIGURATION
 DOORS 800 LBS AND OVER.



SECTION C-C

PREPARATION OF JAMBS BY OTHERS.

DOUBLE TRACK LOW HEADROOM OPTION (AVAIL. FOR BOTH 2" AND 3" TRACK)



DESIGN ENGINEER:
 MARK WESTERFIELD, P.E.
 FLORIDA P.E. #48495

PRODUCT REVISED as complying with the Florida Building Code
 Acceptance No. _____
 Expiration Date _____
 By: *Mark Westerfield*
 Miami Date Product Control

DOOR HEIGHT	VERTICAL TRACK LENGTH
7'-0"	72"
8'-0"	84"
9'-0"	96"
10'-0"	108"
12'-0"	132"
14'-0"	156"
16'-0"	180"
17'-0"	204"
18'-0"	228"

ONE 5/16" x 1-5/8" LAG SCREW SPACED AT THE SAME DISTANCES AS THE TRACK BOLTS (I.E. 3-1/2", 10", 22", 34", 46", ETC.). ADDITIONAL LAG SCREWS LOCATED AT 16", 28", & 40" FROM BOTTOM. TWO LAG SCREWS ALSO LOCATED ABOVE VERTICAL/HORIZONTAL TRACK JUNCTION.

DESIGN LOADS: +38.0 P.S.F. & -42.0 P.S.F.

Unless Stated Otherwise TOLERANCES are
 .0 = ±.031
 .00 = ±.015
 .000 = ±.005
 .0000 = ±.001
 Degrees = ±1/2"
 Unless Stated Otherwise DIMENSIONS ARE IN INCHES.

Clopay CORPORATION
 8585 Duke Boulevard
 Mason, OH 45040 USA
 Tel. No. 513-770-4800
 Fax No. 513-770-4853

MANUFACTURING PRODUCT CODE
 C-PAN-1E448

PART NO.: N/A

WINDLOAD RATING
 W6 DP38T

DESCRIPTION: COMMERCIAL RIBBED DOORS UP TO 16'2"W	SCALE: NTS	DWG. B
DRAWN BY: SH	DATE: 2/12/14	SHEET 3 OF 3
CHECKED BY: MWW	DATE: 10/17/14	SIZE B
DWG. NO.: 104858	VER: M-D	