



DEPARTMENT OF REGULATORY AND ECONOMIC RESOURCES (RER)
BOARD AND CODE ADMINISTRATION DIVISION

NOTICE OF ACCEPTANCE (NOA)

MIAMI-DADE COUNTY
PRODUCT CONTROL SECTION
11805 SW 26 Street, Room 208
Miami, Florida 33175-2474
T (786) 315-2590 F (786) 315-2599
www.miamidade.gov/economy

Clopay Corporation
8585 Duke Boulevard
Mason, OH 45040

SCOPE: This NOA is being issued under the applicable rules and regulations governing the use of construction materials. The documentation submitted has been reviewed and accepted by Miami-Dade County RER-Product Control Section to be used in Miami Dade County and other areas where allowed by the Authority Having Jurisdiction (AHJ).

This NOA shall not be valid after the expiration date stated below. The Miami-Dade County Product Control Section (In Miami Dade County) and/or the AHJ (in areas other than Miami Dade County) reserve the right to have this product or material tested for quality assurance purposes. If this product or material fails to perform in the accepted manner, the manufacturer will incur the expense of such testing and the AHJ may immediately revoke, modify, or suspend the use of such product or material within their jurisdiction. RER reserves the right to revoke this acceptance, if it is determined by Miami-Dade County Product Control Section that this product or material fails to meet the requirements of the applicable building code.

This product is approved as described herein and has been designed to comply with the Florida Building Code, including the High Velocity Hurricane Zone.

DESCRIPTION: Commercial 1-3/4" Intellicore Insulated W8 DP52T Steel Sectional Garage Door up to 12'-2" Wide w/ Optional Impact Resistant Lites

APPROVAL DOCUMENT: Drawing No. **104815**, titled "1-3/4" Intellicore Doors up to 12'2" W", sheet 1 through 3 of 3, dated 03/03/2015, with revision 7 dated 09/06/2023, prepared by Clopay Corporation, signed and sealed by Mark Westerfield, P.E., on 09/14/2023, bearing the Miami-Dade County Product Control revision stamp with the Notice of Acceptance number and the expiration date by the Miami-Dade County Product Control Section.

MISSILE IMPACT RATING: Large and Small Missile Impact Resistant

LABELING: A permanent label with the manufacturer's name or logo, manufacturing address, model number, the positive and negative design pressure rating, indicate impact rated if applicable, installation instruction drawing reference number, approval number (NOA), the applicable test standards, and the statement reading 'Miami-Dade County Product Control Approved' is to be located on the door's side track, bottom angle, or inner surface of a panel.

RENEWAL of this NOA shall be considered after a renewal application has been filed and there has been no change in the applicable building code negatively affecting the performance of this product.

TERMINATION of this NOA will occur after the expiration date or if there has been a revision or change in the materials, use, and/or manufacture of the product or process. Misuse of this NOA as an endorsement of any product, for sales, advertising or any other purposes shall automatically terminate this NOA. Failure to comply with any section of this NOA shall be cause for termination and removal of NOA.

LIMITATION: This approval requires the manufacturer to test all coils used to fabricate door panels under this Notice of Acceptance. A minimum of 2 specimens shall be cut from each coil and tensile tested according to ASTM E-8 by a Miami Dade County approved laboratory selected and paid by the manufacturer. Every 3 months, four times a year, the manufacturer shall mail to this office: a copy of the test reports with confirmation that the specimen were selected from coils at the manufacturer production facilities and a notarized statement from the manufacturer that only coils with yield strength of 32,000 psi or more shall be used to make door panels under this NOA.

ADVERTISEMENT: The NOA number preceded by the words Miami-Dade County, Florida, and followed by the expiration date may be displayed in advertising literature. If any portion of the NOA is displayed, then it shall be done in its entirety.

INSPECTION: A copy of this entire NOA shall be provided to the user by the manufacturer or its distributors and shall be available for inspection at the job site at the request of the Building Official.

This NOA **revises NOA #20-0922.50** and consists of this page 1 and evidence pages E-1, E-2, and E-3, as well as approval document mentioned above.

The submitted documentation was reviewed by **Helmy A. Makar, P.E., M.S.**



Helmy A. Makar
12/28/2023

NOA No 23-0928.48
Expiration Date: 05/07/2025
Approval Date: 12/28/2023
Page 1

NOTICE OF ACCEPTANCE: EVIDENCE SUBMITTED

1. EVIDENCE SUBMITTED UNDER PREVIOUS NOAs

A. DRAWINGS

1. Drawing No. **104815**, titled "1-3/4" Intellicore Doors up to 12'2" W", sheet 1 through 3 of 3, dated 03/03/2015, with revision 5 dated 02/07/2020, prepared by Clopay Corporation, signed and sealed by Mark Westerfield, P.E. *"Submitted under NOA #20-0219.01"*

B. TESTS

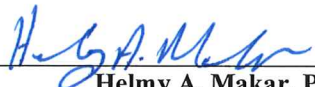
1. Test reports on 1) Uniform Static Air Pressure Test, Loading per FBC TAS 202-94
2) Large Missile Impact Test per FBC, TAS 201-94
3) Cyclic Wind Pressure Loading per FBC, TAS 203-94
4) Forced Entry Test, per FBC, TAS 202-94
5) Tensile Test per ASTM E8
Along with marked-up drawings and installation diagram of 12'2"x 8', 27ga steel garage door Model 3717W8 with Lexan MR10 windows, prepared by American Test Lab, Inc., Test Report No. **ATLNC 0304.01-14**, dated 05/21/2014, signed and sealed by David W. Johnson, P.E. *"Submitted under NOA #15-0311.01"*
2. Test reports on 1) Uniform Static Air Pressure Test, Loading per FBC TAS 202-94
2) Large Missile Impact Test per FBC, TAS 201-94
3) Cyclic Wind Pressure Loading per FBC, TAS 203-94
4) Forced Entry Test, per FBC, TAS 202-94
5) Tensile Test per ASTM E8
along with marked-up drawings and installation diagram of 16'2"x 8', 27ga steel garage door Model GD2LPW8 with MAK SL and/or MAK 15 windows, prepared by American Test Lab, Inc., Test Report No. **ATLNC 1105-01-13**, dated 01/14/2014, signed and sealed by David W. Johnson, P.E. *"Submitted under NOA #15-0311.01"*
3. Test report on Salt Spray per ASTM B117 of painted G40 galvanized painted and G90 panels, prepared by Fenestration Testing Laboratory, Inc., Test Report No. **7890**, dated 10/01/2014, signed by Idalmis Ortega, P.E. *"Submitted under NOA #15-0311.01"*

C. CALCULATIONS

1. Jamb anchor calculations prepared by Clopay Building Products Company, dated 03/04/2015, signed and sealed by Mark Westerfield, P.E. *"Submitted under NOA #15-0311.01"*

D. QUALITY ASSURANCE

1. Miami-Dade Department of Regulatory and Economic Resources (RER)



Helmy A. Makar, P.E., M.S.
Product Control Section Supervisor
NOA No 23-0928.48
Expiration Date: 05/07/2025
Approval Date: 12/28/2023

NOTICE OF ACCEPTANCE: EVIDENCE SUBMITTED

E. MATERIAL CERTIFICATIONS

1. Notice of Acceptance No. **15-0915.08** issued to SABIC Innovative Plastics, US LLC for their Lexan Polycarbonate Sheet Products, approved on 12/10/2015, expiring on 07/17/2018.
2. Notice of Acceptance No. **17-0410.01** issued to Covestro LLC for their Makrolon Polycarbonate Sheets, approved on 06/08/2017, expiring on 08/27/2022.
3. Test report on Surface Burning Characteristics, per ASTM E84 of the polyurethane foam insulation, prepared by QAI Laboratories, Test Report No. **RJ2814-3**, dated 10/14/2013, signed by Greg Banasky. ***"Submitted under NOA #15-0311.01"***
4. Test report on Ignition Temperature of Plastics of rigid polyurethane foam, per ASTM D1929, prepared by UL LLC, Report No. 4786399941/R5692, dated 05/20/2014, signed James Smith. ***"Submitted under NOA #15-0311.01"***

F. STATEMENTS

1. Statement letter of code conformance to 2010 and 5th edition (2014) FBC, and Statement letter of no financial interest Statement letter of no financial interest, issued by Clopay Building Products Company, dated 03/04/2015, signed and sealed by Mark Westerfield, P.E.
2. Statement letter of code conformance to the 6th Edition (2017) FBC and Statement letter of no financial interest, issued by Clopay Corporation, dated 02/11/2020, signed and sealed by Mark Westerfield, P.E.
3. Certificate of amendment changing the company name from Clopay Building Products Company, Inc. to Clopay Corporation, issued by the State of Delaware, dated 08/27/2019.

2. EVIDENCE SUBMITTED UNDER PREVIOUS NOA #20-0922.50

A. DRAWINGS

1. Drawing No. **104815**, titled "1-3/4" Intellicore Doors up to 12'2" W", sheet 1 through 3 of 3, dated 03/03/2015, with revision 6 dated 09/09/2020, prepared by Clopay Corporation, signed and sealed by Mark Westerfield, P.E.

B. TESTS

1. None.

C. CALCULATIONS

1. None.

D. QUALITY ASSURANCE

1. Miami-Dade Department of Regulatory and Economic Resources (RER)

E. MATERIAL CERTIFICATIONS

1. None.

F. STATEMENTS

1. Statement letter of code conformance to the 6th Edition (2017) FBC, 7th Edition (2020) FBC and Statement letter of no financial interest, issued by Clopay Corporation, dated 09/15/2020, signed and sealed by Mark Westerfield, P.E.



Helmy A. Makar, P.E., M.S.
Product Control Section Supervisor
NOA No 23-0928.48
Expiration Date: 05/07/2025
Approval Date: 12/28/2023

NOTICE OF ACCEPTANCE: EVIDENCE SUBMITTED

3. NEW EVIDENCE SUBMITTED

A. DRAWINGS

1. *Drawing No. 104815, titled "1-3/4" Intellicore Doors up to 12'2" W", sheet 1 through 3 of 3, dated 03/03/2015, with revision 7 dated 09/06/2023, prepared by Clopay Corporation, signed and sealed by Mark Westerfield, P.E., on 09/14/2023.*

B. TESTS

1. *None.*

C. CALCULATIONS

1. *None.*

D. QUALITY ASSURANCE

1. *Miami-Dade Department of Regulatory and Economic Resources (RER)*

E. MATERIAL CERTIFICATIONS

1. *None.*

G. STATEMENTS

1. Statement letter of code conformance to the 8th Edition (2023) FBC, 7th Edition (2020) FBC and Statement letter of no financial interest, issued by Clopay Corporation, dated 09/15/2023, signed and sealed by Mark Westerfield, P.E.



Helmy A. Makar, P.E., M.S.
Product Control Section Supervisor
NOA No 23-0928.48
Expiration Date: 05/07/2025
Approval Date: 12/28/2023

CLOPAY / IDEAL / HOLMES

3717 / C7X17 / -- / 27GA 1.75" THICK MINOR RIB
3718 / C7X18 / -- / 27GA 1.75" THICK FLUSH
3720 / C7X20 / 240U / 27GA 2" THICK MINOR RIB
3722 / C0X22 / -- / 20GA 2" THICK FLUSH
3724 / C7X24 / 244U / 24GA 2" THICK MINOR RIB

SHEET
1 OF 3

REVISIONS

REV. NO.	ZONE:	DATE:	ECN NO.	APPVD:	DESCRIPTION
02	-	3/7/14	-	RJK	NEW IMPACT WINDOW CROSS SECTION SHEET 2
03	-	3/3/15	-	MWW	CHANGE TO 3 PAGES FOR MIAMI-DADE SUBMISSION
04	-	7/17/17	-	SH	UPDATED CODE COMPLIANCE STATEMENT TO ADD 6TH EDITION FBC.
05	-	2/7/20	-	MWW	UPDATED TITLE BLOCK
06	-	9/9/20	-	SH	UPDATED CODE COMPLIANCE STATEMENT TO 7TH EDITION FBC
07	-	9/6/23	-	JDW	UPDATED CODE COMPLIANCE STATEMENT TO ADD 8TH EDITION FBC

OPTIONAL GLAZING SHALL BE IMPACT RESISTANT GLAZING. MAXIMUM GLAZING SIZE (DLO) IS 22" x 9'-7/8". SEE IMPACT-RESISTANT CONSTRUCTION FOR DETAILS. GLAZING MAY BE INSTALLED IN TOP SECTION (NOT SHOWN) OR INTERMEDIATE SECTION (SHOWN).

(1) 20 GA. GALV. STEEL BACKER PLATE AT EACH INTERMEDIATE HINGE LOCATION. BACKER PLATE ATTACHED WITH DOUBLE SIDED ACRYLIC ADHESIVE TO BACK OF DOOR.

16 GA. DOUBLE END STILE

VIEW "B"
VIEW "C"

(1) 4" T-STRUT PER SECTION.

LOCK POSITION (BOTH SIDES).

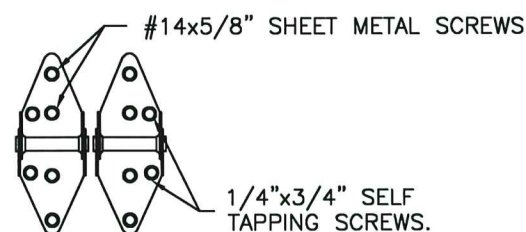
T-STRUT.

(2) LHR TOP BRACKETS USED AS INNER BOTTOM BRACKET.

MAX. DOOR WIDTH = 12'-2"
INSIDE ELEVATIONS

DOOR HEIGHT 'A'	NUMBER OF SECTIONS
UP TO 8'-0"	4
8'-3" THRU 10'-0"	5
10'-3" THRU 12'-0"	6
12'-3" THRU 14'-0"	7
14'-3" THRU 16'-0"	8
16'-3" THRU 18'-0"	9

DOOR WIDTH	NUMBER OF INTERMEDIATE HINGES
UP TO 9'-2"	1
9'-3" THRU 12'-2"	2



14 GA. END HINGES
VIEW "B"

14 GA. (MIN.) INTERMEDIATE HINGE
VIEW "C"

SNAP LATCH ENGAGES ON VERTICAL TRACK. ONE SNAP LATCH ON EACH SIDE OF DOOR.

SLIDE BOLT LOCK ENGAGES INTO VERTICAL TRACK. ONE LOCK ON EACH SIDE OF DOOR.

INSIDE SLIDE BOLT LOCK OPTION.

OUTSIDE KEYED HANDLE.

OUTSIDE KEYED LOCK WITH SNAP LATCH LOCK OPTION.

OUTSIDE HANDLE.

OUTSIDE KEYED LOCK WITH LOCK BAR LOCKING.

END STILE.

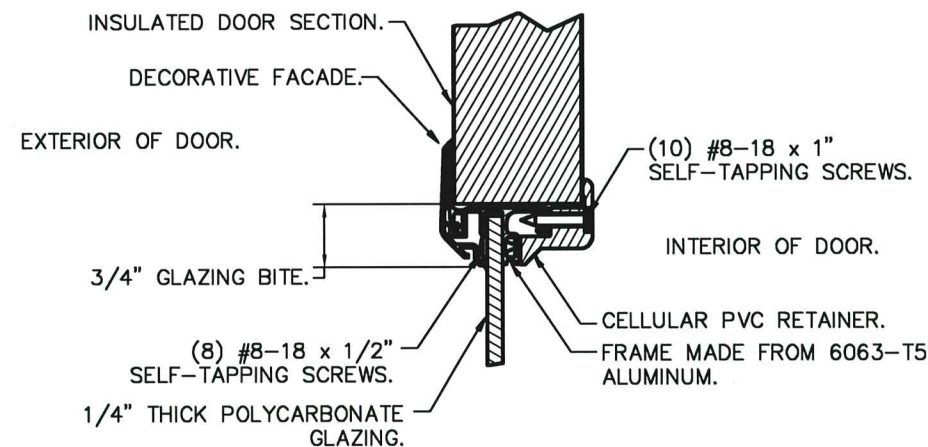
LOCK BAR ENGAGES IN TRACK ON EACH SIDE OF DOOR.

IMPACT-RESISTANT ASSEMBLY DETAILS

IMPACT-RESISTANT CONSTRUCTION:

SOLID DOORS (NO GLAZING) OR DOORS WITH OPTIONAL IMPACT-RESISTANT GLAZING ARE IMPACT-RESISTANT. OPTIONAL IMPACT RESISTANT ASSEMBLY CONSISTS OF ALUMINUM FRONT FRAME AND SABIC IP LEXAN 9034 (VERSIONS ALSO APPROVED: MR10, 9030, 90318, 90316, 90317, 90311, 90314, 90355) OR BAYER MAKROLON GP (VERSIONS ALSO APPROVED: SL, AR, 15), APPROVED CC1 PLASTICS IN ACCORDANCE WITH IBC/FBC 2606 AND APPROVED C1 PLASTICS IN ACCORDANCE WITH FBC 2612. THE ENTIRE DOOR ASSEMBLY INSTALLED IN COMPLIANCE WITH THIS SECTION MEETS THE WIND LOAD REQUIREMENTS OF THE FLORIDA BUILDING CODE AND INTERNATIONAL BUILDING CODE AND IS LARGE- AND SMALL-MISSILE IMPACT RESISTANT.

SECTION B-B (IMPACT-RESISTANT GLAZING OPTION)



PRODUCT REVISED
as complying with the Florida
Building Code
Acceptance No. 23-0928.48
Expiration Date 05/07/2025
By *Heidi A. Wilson*
Miami Dade Product Control

DESIGN LOADS: +52.0 P.S.F. & -58.0 P.S.F.

Unless Stated Otherwise
TOLERANCES are
.0 = ±.031
.00 = ±.015
.000 = ±.005
.0000 = ±.001
Degrees = ±1/2°

Unless Stated Otherwise
DIMENSIONS ARE IN INCHES.

Clopay
CORPORATION

8585 Duke Boulevard
Mason, OH 45040 USA
Tel. No. 513-770-4800
Fax No. 513-770-4853

DESCRIPTION: 1-3/4" INTELLICORE DOORS UP TO 12'2"W (SEE TABLE)

DRAWN BY: SH DATE: 4/7/14 SCALE: NTS DWG. B

CHECKED BY: MWW DATE: 3/3/15 SHEET 1 OF 3

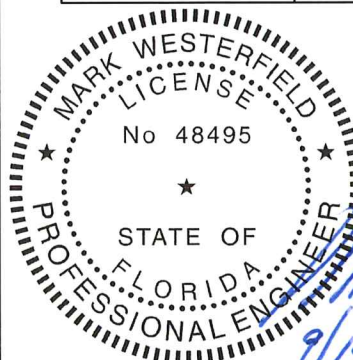
DWG. NO.: 104815 VER: M-D

THIS PRODUCT CONFORMS TO THE REQUIREMENTS OF 7TH AND 8TH EDITION OF THE FLORIDA BUILDING CODE

MANUFACTURING PRODUCT CODE
C-DSIU-1D477

PART NO.: N/A

WINDLOAD RATING
W8 DP52T



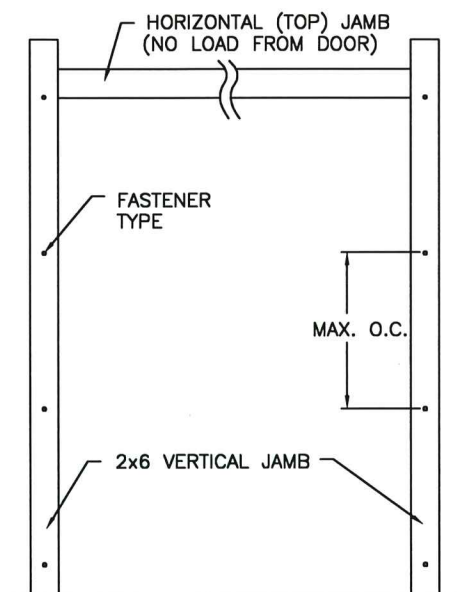
DESIGN ENGINEER:
MARK WESTERFIELD, P.E.
FLORIDA P.E. #48495

CLOPAY / IDEAL / HOLMES
3717 / C7X17 / -- / 27GA 1.75" THICK MINOR RIB
3718 / C7X18 / -- / 27GA 1.75" THICK FLUSH
3720 / C7X20 / 240U / 27GA 2" THICK MINOR RIB
3722 / C0X22 / -- / 20GA 2" THICK FLUSH
3724 / C7X24 / 244U / 24GA 2" THICK MINOR RIB

SHEET:
2 OF 3

REVISIONS

REV. NO.	ZONE:	DATE:	ECN NO.	APPVD:	DESCRIPTION
07	-	-	-	-	SEE REVISION HISTORY ON SHEET ONE.

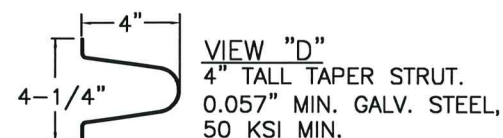


JAMB TO SUPPORTING STRUCTURE ATTACHMENT

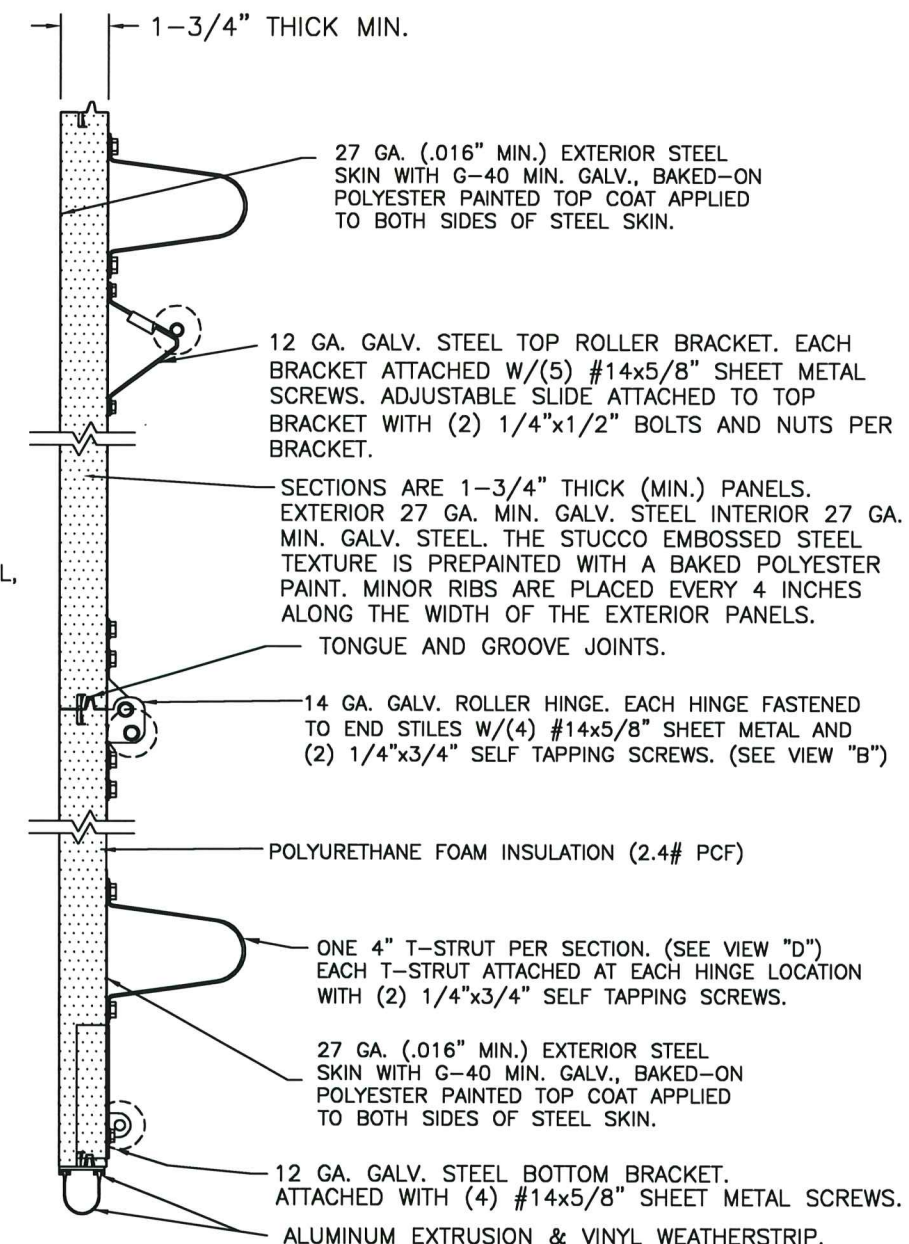
NOTES:

1. ALL THE LOAD FROM THE DOOR IS TRANSFERRED TO THE TRACK AND THEN FROM THE TRACK TO THE 2x6 VERTICAL SYP (GRADE #2 OR BETTER) JAMBS. NO LOAD FROM THE DOOR IS TRANSFERRED TO THE HORIZONTAL (TOP) JAMB.
2. EACH VERTICAL JAMB SEES A MAXIMUM DESIGN LOAD OF +312 LB & -348 LB. PER LINEAR FOOT OF JAMB.
3. ALL JAMB FASTENERS MAY BE (BUT ARE NOT REQUIRED TO BE) COUNTERSUNK TO PROVIDE A FLUSH MOUNTING SURFACE.
4. A 1/3 STRESS INCREASE FOR WIND LOAD WAS NOT USED IN THE CALCULATION OF ALLOWABLE LOADS FOR ANCHORS AND FASTENERS FOR STEEL, CONCRETE AND MASONRY.

NOTE: 2x6 WOOD JAMBS ARE NOT REQUIRED WITH CONTINUOUS ANGLE MOUNT TRACK. HOWEVER, IF DESIRED ON STEEL JAMBS OR CONCRETE OR BLOCK WALLS, APPROVED FASTENERS AS DETAILED BELOW SHOULD BE INCREASED IN LENGTH BY 1-1/2" AND INSTALLED DIRECTLY THROUGH THE ANGLE AND 2x6 WOOD JAMBS INTO THE STEEL JAMBS OR CONCRETE OR BLOCK WALLS. ANCHORS CAN BE (BUT ARE NOT REQUIRED TO BE) COUNTERSUNK TO PROVIDE A FLUSH MOUNTING SURFACE. CONTINUOUS ANGLE TRACK CAN BE ANCHORED DIRECTLY TO GROUT REINFORCED BLOCK WALL OR 3,000 PSI MIN. CONCRETE COLUMN OR STEEL JAMBS.



PRODUCT REVISED
as complying with the Florida
Building Code
Acceptance No. _____
Expiration Date _____
By *Healy P. Miller*
Miami Door Product Control



SECTION A-A (SIDE VIEW)

FASTENER ATTACHMENT TO SUPPORTING STRUCTURE SCHEDULES

BUILDING TYPE	FASTENER TYPE	MAXIMUM ON-CENTER DISTANCE BETWEEN FASTENERS*	STEEL WASHERS REQUIRED?
HOLLOW BLOCK WALL	1/4" x 1-1/4" MIN. EMBED ULTRACON CONCRETE ANCHOR	5-1/4"	1" O.D.
GROUT FILLED BLOCK WALL	1/4" x 1-3/4" MIN. EMBED ULTRACON CONCRETE ANCHOR	8-3/4"	1" O.D.
2000 PSI MIN. CONCRETE	1/4" x 1" MIN. EMBED ULTRACON CONCRETE ANCHOR	7-1/2"	1" O.D.
2000 PSI MIN. CONCRETE	1/4" x 1" MIN. EMBED TAPCON CONCRETE ANCHOR	6-1/2"	1" O.D.
2000 PSI MIN. CONCRETE	3/8" x 1-3/4" MIN. EMBED WEJ-IT ANKR TITE SLEEVE ANCHOR	16"	INCLUDED
4000 PSI MIN. CONCRETE	3/8" x 1-3/4" MIN. EMBED WEJ-IT ANKR TITE SLEEVE ANCHOR	24"	INCLUDED
WOOD FRAME (SYP 0.55 SG)	1/2" x 3" LAG SCREW (ASTM A307, GRADE A) 1-5/8" EMBED INTO STRUCTURE	17-1/4"	1" O.D.
14GA STEEL (0.060" MIN.)	1/4"-14 x 1" ITW BUILDDEX TEKS SELF-DRILLING FASTENER	7-1/4"	1" O.D.
12GA STEEL (0.105" MIN.)	1/4"-14 x 1" ITW BUILDDEX TEKS SELF-DRILLING FASTENER	12-3/4"	1" O.D.
1/8" STEEL	1/4"-14 x 1" ITW BUILDDEX TEKS SELF-DRILLING FASTENER	15-1/4"	1" O.D.

* FIRST (BOTTOM) ANCHOR STARTING AT NO MORE THAN HALF OF THE MAXIMUM ON-CENTER DISTANCE. HIGHEST ANCHOR INSTALLED AT LEAST AS HIGH AS THE DOOR OPENING.
CLOPAY DOES NOT SUPPLY JAMB ATTACHMENT FASTENERS.
MINIMUM DISTANCE BETWEEN CENTER OF ANCHOR AND EDGE OF CONCRETE BLOCK: 2-1/2", EXCLUDING STUCCO THICKNESS.

DESIGN LOADS: +52.0 P.S.F. & -58.0 P.S.F.

Unless Stated Otherwise
TOLERANCES are
.0 = ±.031
.00 = ±.015
.000 = ±.005
.0000 = ±.001
Degrees = ±1/2°
Unless Stated Otherwise
DIMENSIONS ARE IN INCHES.

Clopay
CORPORATION

8585 Duke Boulevard
Mason, OH 45040 USA
Tel. No. 513-770-4800
Fax No. 513-770-4853

MANUFACTURING PRODUCT CODE
C-DSIU-1D477

PART NO.: N/A

WINDLOAD RATING
W8 DP52T

DESCRIPTION: 1-3/4" INTELLICORE DOORS UP TO 12'2"W (SEE TABLE)

DRAWN BY: SH	DATE: 4/7/14	SCALE: NTS	DWG. SIZE B
CHECKED BY: MWW	DATE: 3/3/15	SHEET 2 OF 3	
DWG. NO.: 104815	VER: M-D		



DESIGN ENGINEER:
MARK WESTERFIELD, P.E.
FLORIDA P.E. #48495

CLOPAY / IDEAL / HOLMES
3717 / C7X17 / -- / 27GA 1.75" THICK MINOR RIB
3718 / C7X18 / -- / 27GA 1.75" THICK FLUSH
3720 / C7X20 / 240U / 27GA 2" THICK MINOR RIB
3722 / C0X22 / -- / 20GA 2" THICK FLUSH
3724 / C7X24 / 244U / 24GA 2" THICK MINOR RIB

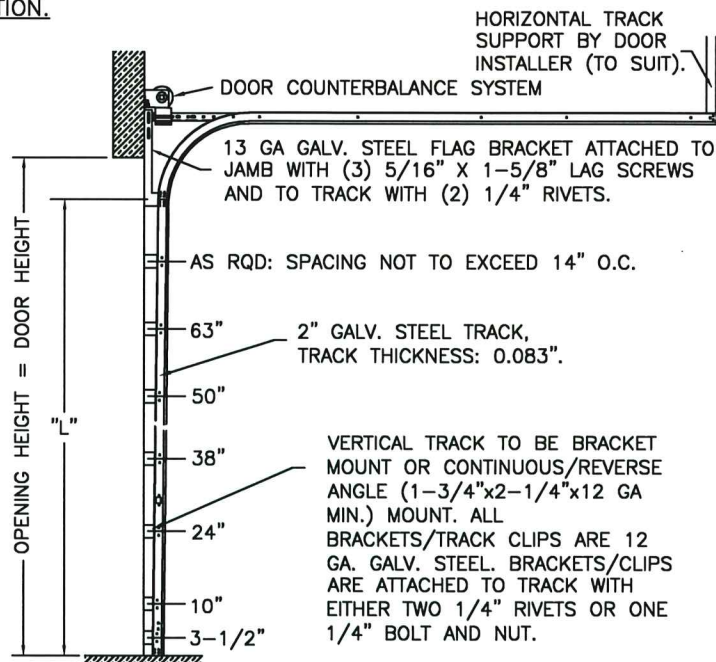
SHEET
3 OF 3

REVISIONS

REV. NO.	ZONE:	DATE:	ECN NO.	APPVD:	DESCRIPTION
07	-	-	-	-	SEE REVISION HISTORY ON SHEET ONE.

2" TRACK CONFIGURATION.

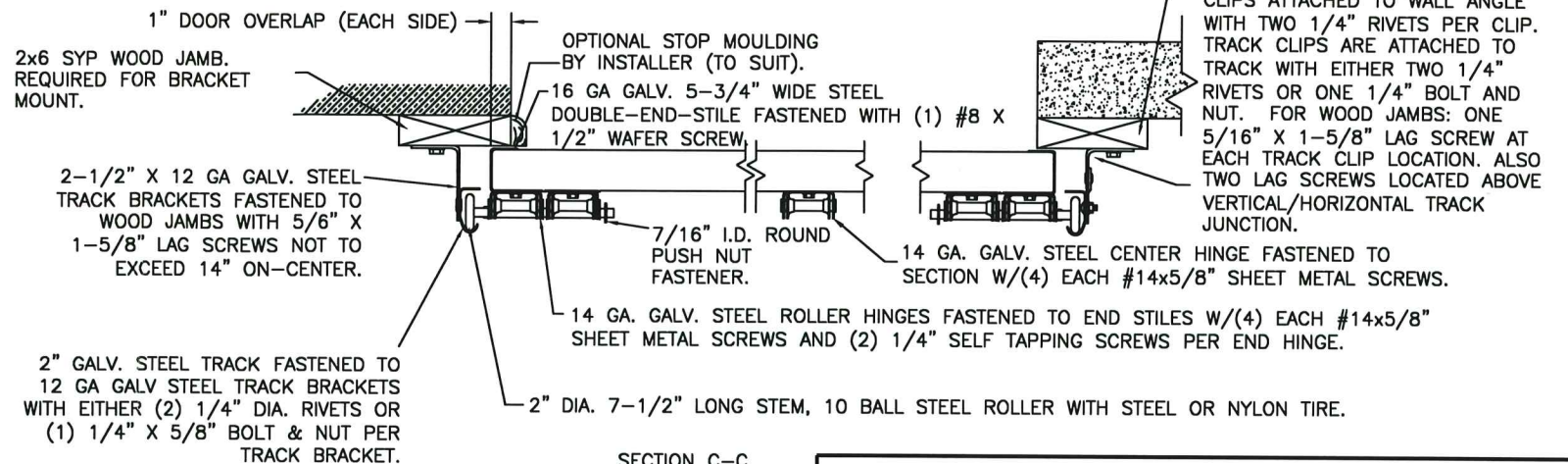
NOTE DOUBLE TRACK HEADROOM, HI-LIFT TRACK, FOLLOW-THE- ROOF TRACK, AND VERTICAL LIFT TRACK ARE AVAILABLE OPTIONS. TRACK CONFIGURATION ABOVE THE DOOR OPENING DOES NOT AFFECT THE WIND LOAD RATING.



DOOR HEIGHT	"L"
6'-6"	70"
7'-0"	76"
7'-6"	82"
8'-0"	88"
8'-6"	94"
9'-0"	100"
9'-6"	106"
10'-0"	112"
10'-6"	118"
11'-0"	124"
11'-6"	130"
12'-0"	136"
12'-6"	142"
13'-0"	148"
13'-6"	154"
14'-0"	160"
14'-6"	166"
15'-0"	172"
15'-6"	178"
16'-0"	184"
16'-6"	190"
17'-0"	196"
17'-6"	202"
18'-0"	208"

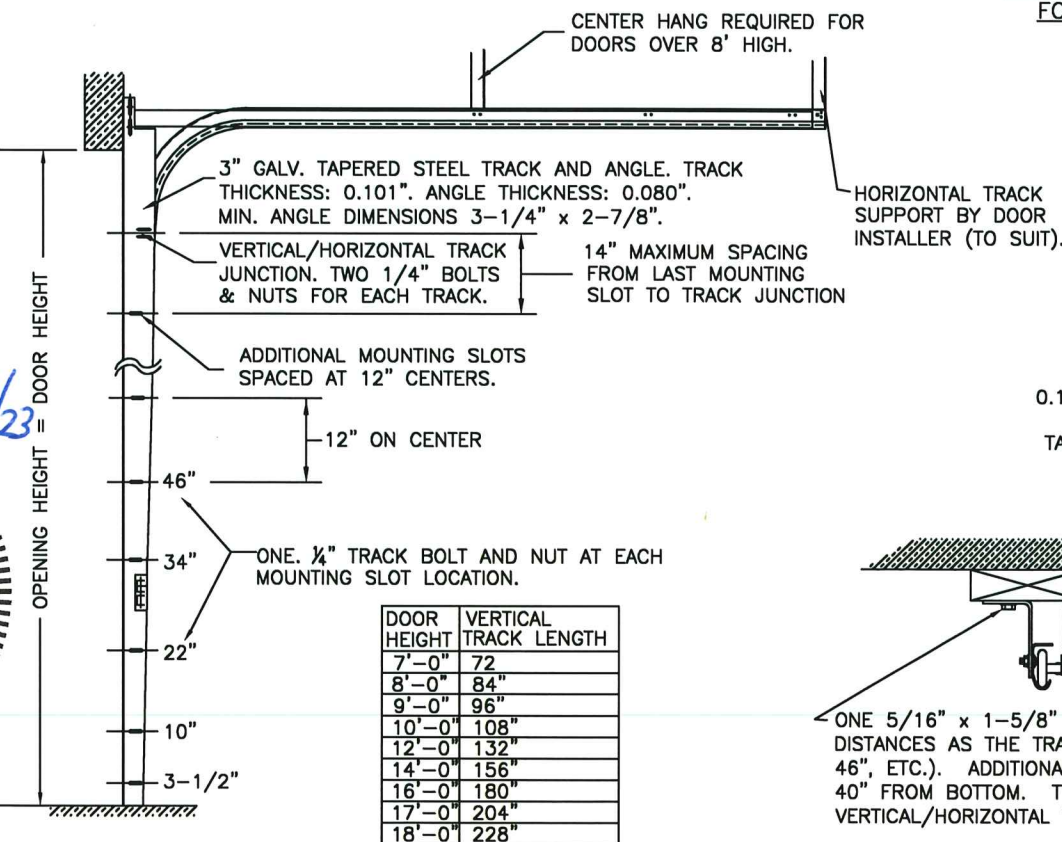
JAMB CONFIGURATION
DOORS UP TO 800 LBS.

BRACKET MOUNT JAMB CONFIGURATION

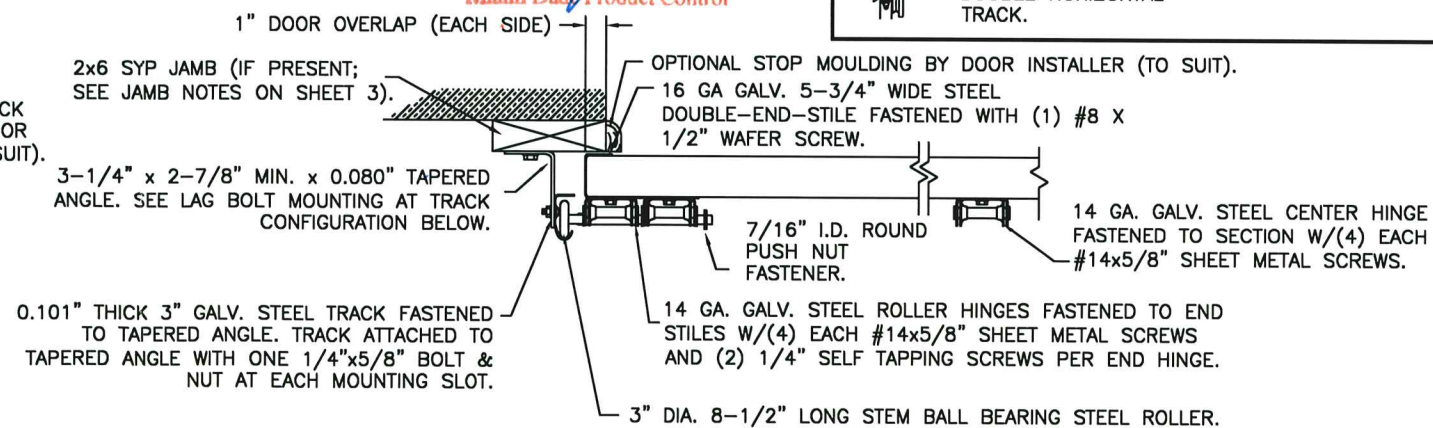


3" TRACK CONFIGURATION.

NOTE DOUBLE TRACK HEADROOM, HI-LIFT TRACK, FOLLOW-THE- ROOF TRACK, AND VERTICAL LIFT TRACK ARE AVAILABLE OPTIONS. TRACK CONFIGURATION ABOVE THE DOOR OPENING DOES NOT AFFECT THE WIND LOAD RATING.



JAMB CONFIGURATION
FOR 3" TRACK.



LHR BRACKET (2-1/2" x 5-3/4" x 12GA) ATTACHED WITH (2) 1/4" x 3/4" SELF TAPPING SCREWS. NOTE THAT LHR BRACKETS ARE ALSO USED WITH "DOUBLE END STILE" AS SHOWN IN ZONE B-3 SHEET 1.

DOUBLE TRACK
LOW HEADROOM OPTION
(AVAIL. FOR BOTH 2" AND 3" TRACK)

DOUBLE HORIZONTAL TRACK.

PRODUCT REVISED
as complying with the Florida
Building Code
Acceptance No
Expiration Date
By *Handwritten Signature*
Miami Dad Product Control

DESIGN LOADS: +52.0 P.S.F. & -58.0 P.S.F.

Unless Stated Otherwise
TOLERANCES are
.0 = ±.031
.00 = ±.015
.000 = ±.005
.0000 = ±.001
Degrees = ±1/2°

Unless Stated Otherwise
DIMENSIONS ARE IN INCHES.

Clopay
CORPORATION
8585 Duke Boulevard
Mason, OH 45040 USA
Tel. No. 513-770-4800
Fax No. 513-770-4853

DESCRIPTION: 1-3/4" INTELLICORE DOORS UP TO 12'2"W (SEE TABLE)

DRAWN BY: SH	DATE: 4/7/14	SCALE: NTS	DWG. SIZE B
CHECKED BY: MWW	DATE: 3/3/15	SHEET 3 OF 3	
DWG. NO.: 104815	VER: M-D		

MANUFACTURING PRODUCT CODE
C-DSIU-1D477
PART NO.: N/A

WINDLOAD RATING
W8 DP52T

DESIGN ENGINEER:
MARK WESTERFIELD, P.E.
FLORIDA P.E. #48495

