



DEPARTMENT OF REGULATORY AND ECONOMIC RESOURCES (RER)
BOARD AND CODE ADMINISTRATION DIVISION
NOTICE OF ACCEPTANCE (NOA)

MIAMI-DADE COUNTY
PRODUCT CONTROL SECTION
11805 SW 26 Street, Room 208
Miami, Florida 33175-2474
T (786) 315-2590 F (786) 315-2599
www.miamidade.gov/economy

Clopay Corporation
8585 Duke Boulevard
Mason, OH 45040

SCOPE:

This NOA is being issued under the applicable rules and regulations governing the use of construction materials. The documentation submitted has been reviewed and accepted by Miami-Dade County RER-Product Control Section to be used in Miami-Dade County and other areas where allowed by the Authority Having Jurisdiction (AHJ).
This NOA shall not be valid after the expiration date stated below. The Miami-Dade County Product Control Section (In Miami-Dade County) and/or the AHJ (in areas other than Miami-Dade County) reserve the right to have this product or material tested for quality assurance purposes. If this product or material fails to perform in the accepted manner, the manufacturer will incur the expense of such testing and the AHJ may immediately revoke, modify, or suspend the use of such product or material within their jurisdiction. RER reserves the right to revoke this acceptance if it is determined by Miami-Dade County Product Control Section that this product or material fails to meet the requirements of the applicable building code.
This product is approved as described herein and has been designed to comply with the Florida Building Code, including the High Velocity Hurricane Zone.

DESCRIPTION: Modern 2in Intellicore W8 DP46T Steel Sectional Garage Door up to 14ft-2in Wide w/ Optional Impact Resistant Lites

APPROVAL DOCUMENT: Drawing No. **105019**, titled “Modern Steel 2” Intellicore **+46/–52** psf to 14’ Wide”, sheets 1 through 4 of 4, dated 07/14/2016, with revision **03** dated 09/06/2023, prepared by Clopay Corporation, signed and sealed by Mark Westerfield, P.E. on 09/14/2023, bearing the Miami-Dade County Product Control revision stamp with the Notice of Acceptance number and the expiration date by the Miami-Dade County Product Control Section.

MISSILE IMPACT RATING: Large and Small Missile Impact Resistant

LABELING: A permanent label with the manufacturer’s name or logo, manufacturing address, model number, the positive and negative design pressure rating, indicate impact rated if applicable, installation instruction drawing reference number, approval number (NOA), the applicable test standards, and the statement reading ‘Miami-Dade County Product Control Approved’ is to be located on the door’s side track, bottom angle, or inner surface of a panel.

RENEWAL of this NOA shall be considered after a renewal application has been filed and there has been no change in the applicable building code negatively affecting the performance of this product.

TERMINATION of this NOA will occur after the expiration date or if there has been a revision or change in the materials, use, and/or manufacture of the product or process. Misuse of this NOA as an endorsement of any product, for sales, advertising or any other purposes shall automatically terminate this NOA. Failure to comply with any section of this NOA shall be cause for termination and removal of NOA.

LIMITATION: This approval requires the manufacturer to do testing of all coils used to fabricate door panels. A minimum of 2 specimens shall be cut from each coil and tensile tested according to ASTM E-8 by a Miami-Dade County approved laboratory. Every 3 months, the manufacturer shall mail to this office a copy of the tested reports. Only coils with average yield strength of 30,000 psi or more shall be used to make door panels for Miami-Dade County under this Notice of Acceptance.

ADVERTISEMENT: The NOA number preceded by the words Miami-Dade County, Florida, and followed by the expiration date may be displayed in advertising literature. If any portion of the NOA is displayed, then it shall be done in its entirety.

INSPECTION: A copy of this entire NOA shall be provided to the user by the manufacturer or its distributors and shall be available for inspection at the job site at the request of the Building Official.

This NOA **revises NOA #21-0803.01** and consists of this page 1 and evidence pages E-1, E-2, E-3 and E-4, as well as approval document mentioned above.

The submitted documentation was reviewed by **Helmy A. Makar, P.E., M.S.**



Helmy A. Makar
12/21/2023

NOA-No. 23-0928.58
Expiration Date: 11/29/2026
Approval Date: 12/21/2023
Page 1

NOTICE OF ACCEPTANCE: EVIDENCE SUBMITTED

1. EVIDENCE SUBMITTED UNDER NOA # 16-0808.11

A. DRAWINGS

- 1. Drawing No. **105019**, titled “Modern Steel 2” Intellicore +46/-52 psf to 14’ Wide”, sheets 1 through 4 of 4, dated 07/14/2016, prepared by Clopay Building Products Company, signed and sealed by Mark Westerfield, P.E.

B. TESTS


- 1. Test reports on
 - 1) Uniform Static Air Pressure Test, Loading per FBC TAS 202-94
 - 2) Large Missile Impact Test per FBC, TAS 201-94
 - 3) Cyclic Wind Pressure Loading per FBC, TAS 203-94
 - 4) Forced Entry Test, per FBC, TAS 202-94
 - 5) Tensile Test per ASTM E8along with marked-up drawings and installation diagram of 14’2”x 8’, 27ga (0.016”) steel garage doors Model 9202W8 with Lexan polycarbonate windows, prepared by American Test Lab, Inc., Test Report No. **ATLNC 0514.01-15**, dated 05/27/2015, signed and sealed by David W. Johnson, P.E.
- 2. Test reports on
 - 1) Uniform Static Air Pressure Test, Loading per FBC TAS 202-94
 - 2) Large Missile Impact Test per FBC, TAS 201-94
 - 3) Cyclic Wind Pressure Loading per FBC, TAS 203-94
 - 4) Forced Entry Test, per FBC, TAS 202-94
 - 5) Tensile Test per ASTM E8along with marked-up drawings and installation diagram of 16’2”x 8’, 27ga steel garage door Model GD2LPW8 with MAK SL and/or MAK 15 windows, prepared by American Test Lab, Inc., Test Report No. **ATLNC 1105-01-13**, dated 01/14/2014, signed and sealed by David W. Johnson, P.E.
- 3. Test report on Salt Spray per ASTM B117 of painted G40 galvanized painted and G90 panels, prepared by Fenestration Testing Laboratory, Inc., Test Report No. **7890**, dated 10/01/2014, signed by Idalmis Ortega, P.E.

C. CALCULATIONS

- 1. Jamb anchor calculations prepared by Clopay Building Products Company, dated 07/14/2016, signed and sealed by Mark Westerfield, P.E.

D. QUALITY ASSURANCE

- 1. Miami-Dade Department of Regulatory and Economic Resources (RER).



Helmy A. Makar, P.E., M.S.
Product Control Section Supervisor
NOA-No. 23-0928.58
Expiration Date: 11/29/2026
Approval Date: 12/21/2023

NOTICE OF ACCEPTANCE: EVIDENCE SUBMITTED

E. MATERIAL CERTIFICATIONS

- 1. Notice of Acceptance No. **15-0915.08** issued to SABIC Innovative Plastics, US LLC for their Lexan Polycarbonate Sheet Products, approved on 12/10/2015, expiring on 07/17/2018.
- 2. Notice of Acceptance No. **17-0410.01** issued to Covestro LLC for their Makrolon Polycarbonate Sheets, approved on 06/08/2017, expiring on 08/27/2022.
- 3. Test report on Surface Burning Characteristics, per ASTM E84 of the polyurethane foam insulation, prepared by QAI Laboratories, Test Report No. **RJ2814-3**, dated 10/14/2013, signed by Greg Banasky.
- 4. Test report on Ignition Temperature of Plastics of the polyurethane foam insulation per ASTM D1929, prepared by UL LLC, Test Report No. **4786399941/ R5692**, dated 05/20/2014, signed by James Smith.

F. STATEMENTS

- 1. Statement letter of code conformance to 5th edition (2014) FBC issued by Clopay Building Products Company, dated 07/14/2016, signed and sealed by Mark Westerfield, P.E.
- 2. Statement letter of no financial interest issued by Clopay Building Products Company, dated 07/14/2016, signed and sealed by Mark Westerfield, P.E.

2. EVIDENCE SUBMITTED UNDER NOA # 17-0809.33

A. DRAWINGS

- 1. Drawing No. **105019**, titled “Modern Steel 2” Intellicore +46/-52 psf to 14’ Wide”, sheets 1 through 4 of 4, dated 07/14/2016, with revision 1 dated 07/18/2017, prepared by Clopay Building Products Company, signed and sealed by Mark Westerfield, P.E.

B. TESTS

- 1. None.

C. CALCULATIONS

- 1. None.

D. QUALITY ASSURANCE


- 1. Miami-Dade Department of Regulatory and Economic Resources (RER).

E. MATERIAL CERTIFICATIONS

- 1. None.

F. STATEMENTS

- 1. Statement letter of code conformance to 2010, 5th Edition (2014) and 6th Edition (2017) FBC issued by Clopay Building Products Company, dated 08/02/2017, signed and sealed by Mark Westerfield, P.E.



Helmy A. Makar, P.E., M.S.
Product Control Section Supervisor
NOA-No. 23-0928.58
Expiration Date: 11/29/2026
Approval Date: 12/21/2023

NOTICE OF ACCEPTANCE: EVIDENCE SUBMITTED

3. EVIDENCE SUBMITTED UNDER NOA # 20-0922.28

A. DRAWINGS

1. Drawing No. **105019**, titled "Modern Steel 2" Intellicore +46/-52 psf to 14' Wide", sheets 1 through 4 of 4, dated 07/14/2016, with revision **02** dated 08/25/2020, prepared by Clopay Corporation, dated 09/10/2020, signed and sealed by Mark Westerfield, P.E.

B. TESTS

1. None.

C. CALCULATIONS

1. None.

D. QUALITY ASSURANCE

1. Miami-Dade Department of Regulatory and Economic Resources (RER).

E. MATERIAL CERTIFICATIONS

1. None.

F. STATEMENTS

1. Statement letters of code conformance to **6th Edition (2017) and 7th Edition (2020) FBC**, issued by Clopay Corporation, dated 09/15/2020, signed and sealed by Mark Westerfield, P.E.
2. Certificate of amendment changing the company name from Clopay Building Products Company, Inc. to Clopay Corporation, issued by the State of Delaware, dated 08/27/2019.

4. EVIDENCE SUBMITTED UNDER PREVIOUS APPROVAL #21-0803.01

A. DRAWINGS

1. Drawing No. **105019**, titled "Modern Steel 2" Intellicore +46/-52 psf to 14' Wide", sheets 1 through 4 of 4, dated 07/14/2016, with revision **02** dated 08/25/2020, prepared by Clopay Corporation, dated 09/10/2020, signed and sealed by Mark Westerfield, P.E. on 07/28/2021.

B. TESTS

1. None.

C. CALCULATIONS

1. None.

D. QUALITY ASSURANCE

1. Miami-Dade Department of Regulatory and Economic Resources (RER).



Helmy A. Makar, P.E., M.S.
Product Control Section Supervisor
NOA-No. 23-0928.58
Expiration Date: 11/29/2026
Approval Date: 12/21/2023

Clopay Corporation

NOTICE OF ACCEPTANCE: EVIDENCE SUBMITTED

E. MATERIAL CERTIFICATIONS

- 1. None.

F. STATEMENTS

- 1. Statement letter of code conformance to the 7th Edition (2020) of the FBC, issued by Clopay Corporation, dated 07/28/2021, signed and sealed by Mark Westerfield, P.E.
- 2. Statement letter of no financial interest, issued by Clopay Corporation, dated 07/28/2021, signed and sealed by Mark Westerfield, P.E.

5. NEW EVIDENCE SUBMITTED

A. DRAWINGS

- 1. Drawing No. **105019**, titled “Modern Steel 2” Intellicore **+46/–52** psf to 14’ Wide”, sheets 1 through 4 of 4, dated 07/14/2016, with revision **03** dated 09/06/2023, prepared by Clopay Corporation, signed and sealed by Mark Westerfield, P.E. on 09/14/2023.

B. TESTS

- 1. None.

C. CALCULATIONS

- 1. None.

D. QUALITY ASSURANCE


- 1. Miami-Dade Department of Regulatory and Economic Resources (RER).

E. MATERIAL CERTIFICATIONS

- 1. None.

G. STATEMENTS

- 1. Statement letter of code conformance to the 7th Edition (2020) and 8th Edition (2023) of the FBC, issued by Clopay Corporation, dated 09/15/2023, signed and sealed by Mark Westerfield, P.E.
- 2. Statement letter of no financial interest, issued by Clopay Corporation, dated 09/15/2023, signed and sealed by Mark Westerfield, P.E.


Helmy A. Makar, P.E., M.S.
Product Control Section Supervisor
NOA-No. 23-0928.58
Expiration Date: 11/29/2026
Approval Date: 12/21/2023

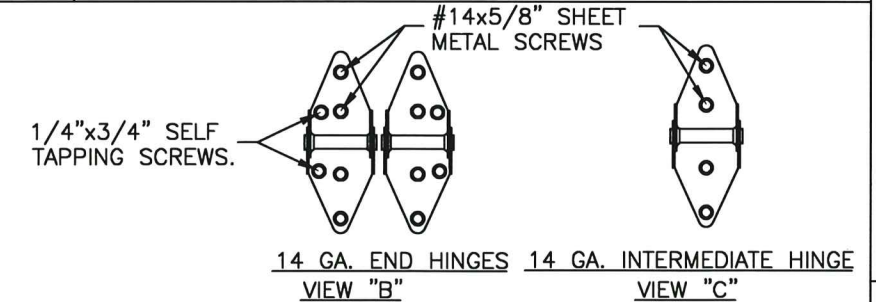
BRAND	MODERN STEEL		COMMERCIAL DOORS	
	FLUSH	GROOVED	FLUSH	GROOVED
CLOPAY	9208, HDPCC2	9209, HDPCR2	3728	3729
HOLMES	7208	7209	--	C7R20

SHEET: 1 OF 4	REVISIONS					
	REV. NO.	ZONE:	DATE:	ECN NO.	APPVD:	DESCRIPTION
	01	—	7/18/17	—	SH	UPDATED CODE COMPLIANCE STATEMENT TO ADD 6TH EDITION FBC.
	02	—	8/25/20	—	MWW	UPDATED TITLE BLOCK AND CODE COMPLIANCE STATEMENT TO 7TH
	03	—	9/6/23	—	JDW	UPDATED CODE COMPLIANCE STATEMENT TO ADD 8TH EDITION FBC.

MIXED GLAZING SHOWN.

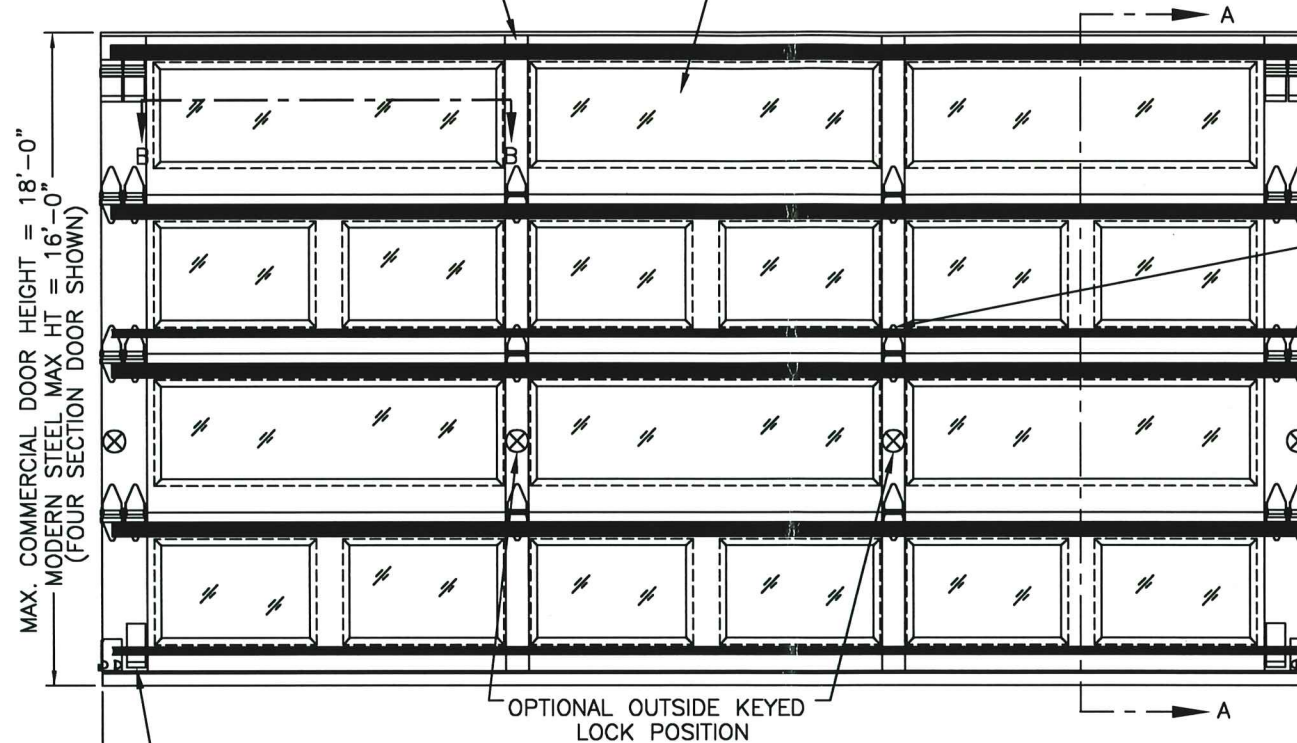
(1) 20 GA. BACKER EXTERNAL PLATE AT EACH INTERMEDIATE HINGE LOCATION, ATTACHED WITH DOUBLE SIDED ACRYLIC ADHESIVE TO BACK OF DOOR.

OPTIONAL IMPACT RESISTANT GLAZING. MAXIMUM GLAZING SIZE (DLO) IS 39-1/4"x13-1/4". GLAZING MAY BE SHORT-PANEL OR LONG-PANEL. SEE SECTION B-B ON SHEET 2 FOR DETAILS. GLAZING MAY BE INSTALLED IN ANY LOCATION IN ANY OR ALL SECTIONS.



DOOR HEIGHT	# OF SECTIONS	# OF U-BARS	# OF T-STRUTS
6'3" TO 8'0"	4	2	4
8'3" TO 10'0"	5	3	5
10'3" TO 12'0"	6	3	6
12'3" TO 14'0"	7	4	7
14'3" TO 16'0"	8	4	8
16'3" TO 18'0"	9	5	9

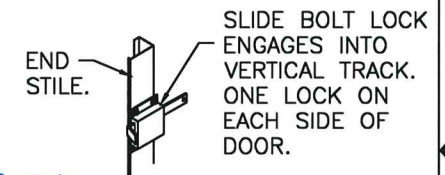
MAX SECTION HEIGHT: 24'



SEE END HINGE VIEW B.

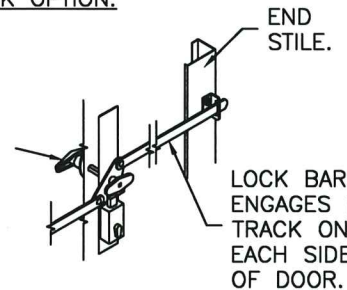
SEE INTERM. HINGE VIEW C.

TWO POINT LOCKING INTO TRACK.



PRODUCT REVISED as complying with the Florida Building Code Acceptance No. 23-0928.58 Expiration Date 11/29/2026 By: Hely A. Miller Miami Trade Product Control

INSIDE SLIDE BOLT LOCK OPTION.

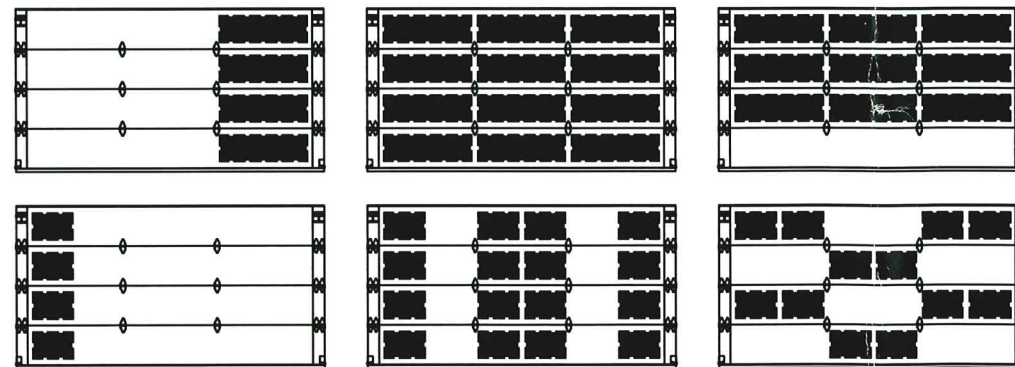


SNAP LATCH ENGAGES ONTO VERTICAL TRACK. ONE SNAP LATCH ON EACH SIDE OF DOOR.



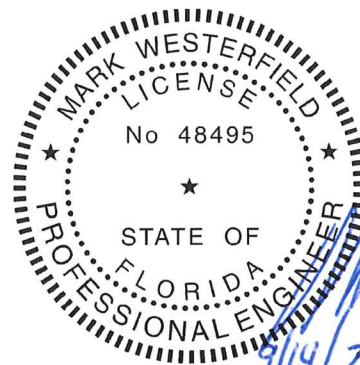
OUTSIDE KEYED LOCK WITH LOCK BAR LOCKING.

REPRESENTATIVE GLAZING PATTERNS.



GLAZING MAY BE IN ANY LOCATION IN ANY OR ALL SECTIONS. THESE PATTERNS ARE REPRESENTATIVE OF THE APPROVED CONFIGURATIONS. NOT ALL CONFIGURATIONS ARE AVAILABLE AS STANDARD PRODUCT. CONSULT FACTORY FOR DETAILS.

THIS PRODUCT CONFORMS TO THE REQUIREMENTS OF 7TH AND 8TH EDITION OF THE FLORIDA BUILDING CODE



DESIGN ENGINEER, MARK WESTERFIELD, P.E. FLORIDA LICENSE No. 48495

DESIGN LOADS: +46.0 PSF & -52.0 PSF

Unless Stated Otherwise TOLERANCES are
.0 = ±.031
.00 = ±.015
.000 = ±.005
.0000 = ±.001
Degrees = ±1/2°
Unless Stated Otherwise DIMENSIONS ARE IN INCHES.

Clopay CORPORATION
8585 Duke Boulevard
Mason, OH 45040 USA
Tel. No. 513-770-4800
Fax No. 513-770-4853

DESCRIPTION: MODERN STEEL 2" INTELICORE +46/-52 PSF TO 14' W			
DRAWN BY: SH	DATE: 12/2015	SCALE: NTS	DWG. B
CHECKED BY: MWW	DATE: 7/14/16	SHEET 1 OF 4	SIZE
DWG. NO.: 105019		VER: M-D	

MANUFACTURING PRODUCT CODE
DSIUA-1F477

PART NO.: N/A

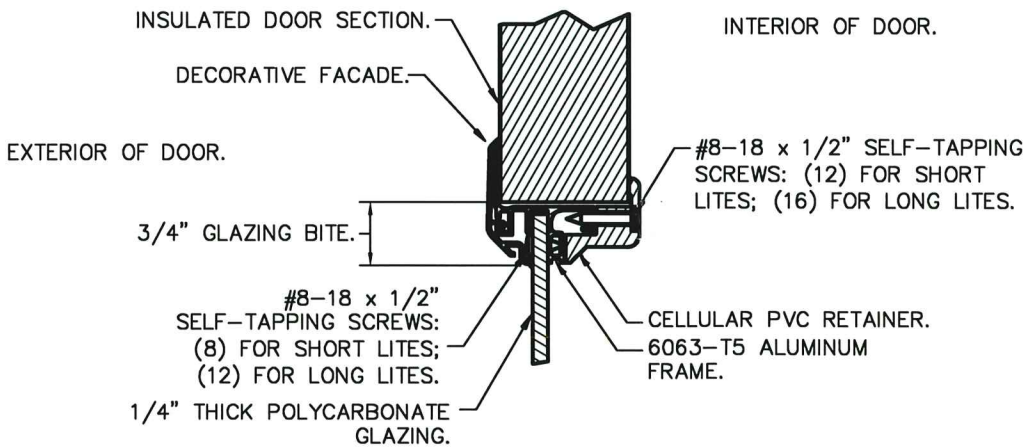
WINDLOAD RATING
W8 DP46T

BRAND	MODERN STEEL		COMMERCIAL DOORS	
	FLUSH	GROOVED	FLUSH	GROOVED
CLOPAY	9208, HDPCC2	9209, HDPCR2	3728	3729
HOLMES	7208	7209	--	C7R20

SHEET: 2 OF 4	REVISIONS					
	REV. NO.	ZONE:	DATE:	ECN NO.	APPVD:	DESCRIPTION
	03	—	—	—	—	SEE REVISION HISTORY ON SHEET ONE.

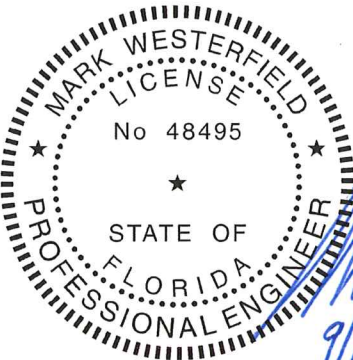
IMPACT-RESISTANT CONSTRUCTION:
 SOLID DOORS (NO GLAZING) OR DOORS WITH OPTIONAL IMPACT-RESISTANT GLAZING ARE IMPACT-RESISTANT. OPTIONAL IMPACT RESISTANT ASSEMBLY CONSISTS OF ALUMINUM FRONT FRAME AND SABIC IP LEXAN 9034 (VERSIONS ALSO APPROVED: MR10, 9030, 90318, 90316, 90317, 90311, 90314, 90355) OR BAYER MAKROLON GP (VERSIONS ALSO APPROVED: SL, AR, 15), APPROVED CC1 PLASTICS IN ACCORDANCE WITH IBC/FBC 2606 AND APPROVED C1 PLASTICS IN ACCORDANCE WITH FBC 2612. THE ENTIRE DOOR ASSEMBLY INSTALLED IN COMPLIANCE WITH THIS SECTION MEETS THE WIND LOAD REQUIREMENTS OF THE FLORIDA BUILDING CODE AND INTERNATIONAL BUILDING CODE AND IS LARGE- AND SMALL-MISSILE IMPACT RESISTANT.

SECTION B-B (IMPACT-RESISTANT GLAZING OPTION)




IMPACT-RESISTANT GLAZING DETAILS

PRODUCT REVISED
 as complying with the Florida
 Building Code
 Acceptance No. 23-0928.58
 Expiration Date 11/29/2026
 By *Helga A. Miller*
 Miami Data Product Control



DESIGN ENGINEER:
 MARK WESTERFIELD, P.E.
 FLORIDA LICENSE No. 48495

DESIGN LOADS: +46.0 PSF & -52.0 PSF

Unless Stated Otherwise TOLERANCES are .0 = ±.031 .00 = ±.015 .000 = ±.005 .0000 = ±.001 Degrees = ±1/2" Unless Stated Otherwise DIMENSIONS ARE IN INCHES.	 Clopay CORPORATION	8585 Duke Boulevard Mason, OH 45040 USA Tel. No. 513-770-4800 Fax No. 513-770-4853		WINDLOAD RATING W8 DP46T			
		DESCRIPTION: MODERN STEEL 2" INTELICORE +46/-52 PSF TO 14' W					
		DRAWN BY: SH		DATE: 12/2015		SCALE: NTS	
		CHECKED BY: MWW		DATE: 7/14/16		SHEET 2 OF 4	
		DWG. NO.: 105019		VER: M-D		DWG. SIZE	
						B	

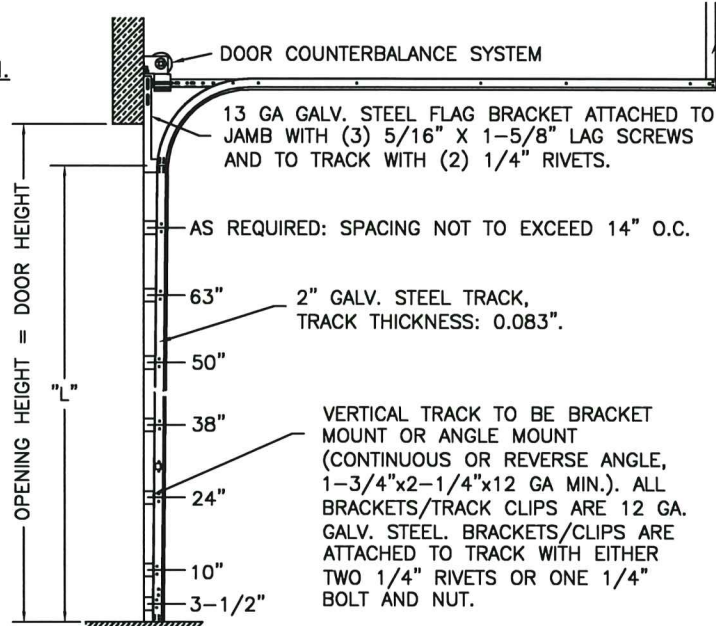
DWG. B
 SIZE

BRAND	MODERN STEEL		COMMERCIAL DOORS	
	FLUSH	GROOVED	FLUSH	GROOVED
CLOPAY	9208, HDPC2	9209, HDPCR2	3728	3729
HOLMES	7208	7209	--	C7R20

SHEET:		REVISIONS				
4 OF 4		REV. NO.	ZONE:	DATE:	ECN NO.	APPVD:
		03	-	-	-	-
		DESCRIPTION				
		SEE REVISION HISTORY ON SHEET ONE.				

2" TRACK CONFIGURATION.

NOTE DOUBLE TRACK HEADROOM, HI-LIFT TRACK, FOLLOW-THE- ROOF TRACK, AND VERTICAL LIFT TRACK ARE AVAILABLE OPTIONS. TRACK CONFIGURATION ABOVE THE DOOR OPENING DOES NOT AFFECT THE WIND LOAD RATING.



DOOR HEIGHT	"L"
6'-6"	70"
7'-0"	76"
7'-6"	82"
8'-0"	88"
8'-6"	94"
9'-0"	100"
9'-6"	106"
10'-0"	112"
10'-6"	118"
11'-0"	124"
11'-6"	130"
12'-0"	136"
12'-6"	142"
13'-0"	148"
13'-6"	154"
14'-0"	160"
14'-6"	166"
15'-0"	172"
15'-6"	178"
16'-0"	184"

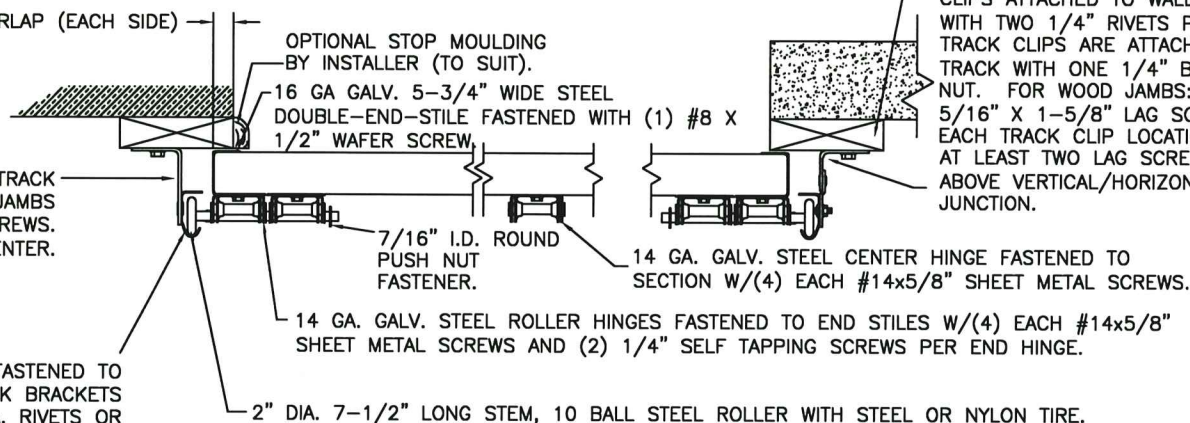
JAMB CONFIGURATION DOORS UP TO 800 LBS.

BRACKET MOUNT JAMB CONFIGURATION

1" DOOR OVERLAP (EACH SIDE)

2-1/2" x 12 GA. GALV. STEEL TRACK BRACKETS FASTENED TO WOOD JAMBS WITH 5/16" x 1-5/8" LAG SCREWS. NOT TO EXCEED 14" ON-CENTER.

2" GALV. STEEL TRACK FASTENED TO 12 GA. GALV. STEEL TRACK BRACKETS WITH EITHER (2) 1/4" DIA. RIVETS OR (1) 1/4" x 5/8" BOLT & NUT PER TRACK BRACKET.



SECTION C-C

PREPARATION OF JAMBS BY OTHERS.

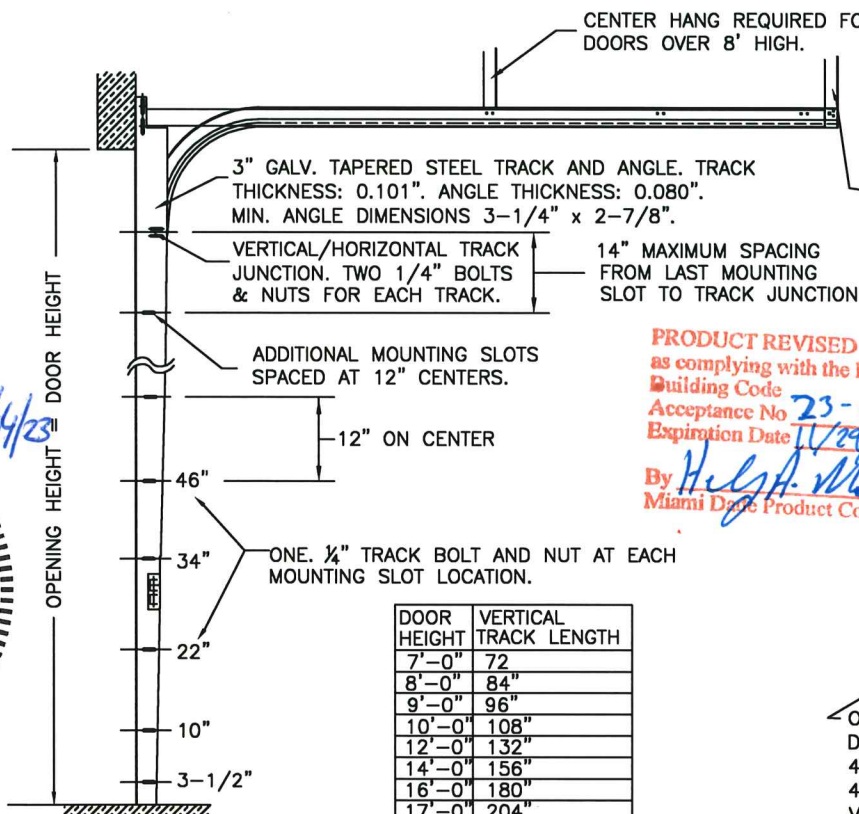
ANGLE MOUNT JAMB CONFIGURATION

2x6 SYP JAMB (IF PRESENT; SEE JAMB NOTES ON SHEET 3).

VERTICAL TRACK TO BE CONTINUOUS OR REVERSE ANGLE. 12 GA. TRACK CLIPS ATTACHED TO WALL ANGLE WITH TWO 1/4" RIVETS PER CLIP. TRACK CLIPS ARE ATTACHED TO TRACK WITH ONE 1/4" BOLT AND NUT. FOR WOOD JAMBS: ONE 5/16" x 1-5/8" LAG SCREW AT EACH TRACK CLIP LOCATION. ALSO AT LEAST TWO LAG SCREWS LOCATED ABOVE VERTICAL/HORIZONTAL TRACK JUNCTION.

3" TRACK CONFIGURATION.

NOTE DOUBLE TRACK HEADROOM, HI-LIFT TRACK, FOLLOW-THE- ROOF TRACK, AND VERTICAL LIFT TRACK ARE AVAILABLE OPTIONS. TRACK CONFIGURATION ABOVE THE DOOR OPENING DOES NOT AFFECT THE WIND LOAD RATING.

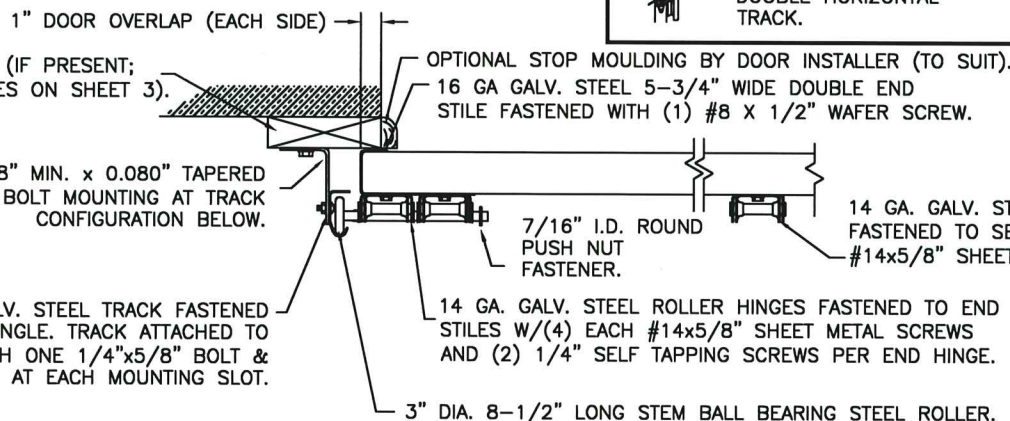


JAMB CONFIGURATION FOR 3" TRACK.

2x6 SYP JAMB (IF PRESENT; SEE JAMB NOTES ON SHEET 3).

3-1/4" x 2-7/8" MIN. x 0.080" TAPERED ANGLE. SEE LAG BOLT MOUNTING AT TRACK CONFIGURATION BELOW.

0.101" THICK 3" GALV. STEEL TRACK FASTENED TO TAPERED ANGLE. TRACK ATTACHED TO TAPERED ANGLE WITH ONE 1/4"x5/8" BOLT & NUT AT EACH MOUNTING SLOT.



SECTION C-C

PREPARATION OF JAMBS BY OTHERS.

DOUBLE TRACK LOW HEADROOM OPTION (AVAIL. FOR BOTH 2" AND 3" TRACK)



LHR BRACKET (2-1/2" x 5-3/4" x 12GA) ATTACHED WITH (2) 1/4" x 3/4" SELF TAPPING SCREWS. NOTE THAT LHR BRACKETS ARE ALSO USED WITH "DOUBLE END STILE" AS SHOWN IN ZONE B-3 SHEET 1.

PRODUCT REVISED
as complying with the Florida
Building Code
Acceptance No. 23-0928.54
Expiration Date 11/29/2026
By *Helpful*
Miami Date Product Control

DOOR HEIGHT	VERTICAL TRACK LENGTH
7'-0"	72"
8'-0"	84"
9'-0"	96"
10'-0"	108"
12'-0"	132"
14'-0"	156"
16'-0"	180"
17'-0"	204"
18'-0"	228"

ONE 5/16" x 1-5/8" LAG SCREW SPACED AT THE SAME DISTANCES AS THE TRACK BOLTS (I.E. 3-1/2", 10", 22", 34", 46", ETC.). ADDITIONAL LAG SCREWS LOCATED AT 16", 28", & 40" FROM BOTTOM. TWO LAG SCREWS ALSO LOCATED ABOVE VERTICAL/HORIZONTAL TRACK JUNCTION.

DESIGN LOADS: +46.0 PSF & -52.0 PSF

Unless Stated Otherwise
TOLERANCES are
.0 = ±.031
.00 = ±.015
.000 = ±.005
.0000 = ±.001
Degrees = ±1/2°

Unless Stated Otherwise
DIMENSIONS ARE IN INCHES.

Clopay
CORPORATION
8585 Duke Boulevard
Mason, OH 45040 USA
Tel. No. 513-770-4800
Fax No. 513-770-4853

DESCRIPTION: MODERN STEEL 2" INTELICORE +46/-52 PSF TO 14' W

DRAWN BY: SH DATE: 12/2015 SCALE: NTS DWG. B

CHECKED BY: MWW DATE: 7/14/16 SHEET 4 OF 4

DWG. NO.: 105019 VER: M-D

MANUFACTURING PRODUCT CODE
DSIUA-1F477

PART NO.: N/A

WINDLOAD RATING
W8 DP46T

DESIGN ENGINEER:
MARK WESTERFIELD, P.E.
FLORIDA LICENSE No. 48495

