



DEPARTMENT OF REGULATORY AND ECONOMIC RESOURCES (RER)  
BOARD AND CODE ADMINISTRATION DIVISION

## NOTICE OF ACCEPTANCE (NOA)

MIAMI-DADE COUNTY  
PRODUCT CONTROL SECTION  
11805 SW 26 Street, Room 208  
Miami, Florida 33175-2474  
T (786) 315-2590 F (786) 315-2599  
[www.miamidade.gov/economy](http://www.miamidade.gov/economy)

Clopay Corporation  
8585 Duke Boulevard  
Mason, OH 45040

### SCOPE:

This NOA is being issued under the applicable rules and regulations governing the use of construction materials. The documentation submitted has been reviewed and accepted by Miami-Dade County RER-Product Control Section to be used in Miami-Dade County and other areas where allowed by the Authority Having Jurisdiction (AHJ).

This NOA shall not be valid after the expiration date stated below. The Miami-Dade County Product Control Section (In Miami-Dade County) and/ or the AHJ (in areas other than Miami-Dade County) reserve the right to have this product or material tested for quality assurance purposes. If this product or material fails to perform in the accepted manner, the manufacturer will incur the expense of such testing and the AHJ may immediately revoke, modify, or suspend the use of such product or material within their jurisdiction. RER reserves the right to revoke this acceptance if it is determined by Miami-Dade County Product Control Section that this product or material fails to meet the requirements of the applicable building code.

This product is approved as described herein and has been designed to comply with the Florida Building Code, including the High Velocity Hurricane Zone.

**DESCRIPTION: Full Vision W8 DP46 Aluminum Sectional Garage Door up to 16'-2" Wide with Impact Resistant Glazing**

**APPROVAL DOCUMENT:** Drawing No. **105609**, titled "M/N 904 16' Wide +46/-52 psf", sheets 1 through 4 of 4, dated 07/08/2022, with revision 3 dated 09/07/2023, prepared by Clopay Corporation, signed and sealed by Mark Westerfield, P.E. on 09/14/2023, bearing the Miami-Dade County Product Control revision stamp with the Notice of Acceptance number and expiration date by the Miami-Dade County Product Control Section.

**MISSILE IMPACT RATING: Large and Small Missile Impact Resistant**

**LABELING:** A permanent label with the manufacturer's name or logo, manufacturing address, model number, the positive and negative design pressure rating, indicate impact rated if applicable, installation instruction drawing reference number, approval number (NOA), the applicable test standards, and the statement reading 'Miami-Dade County Product Control Approved' is to be located on the door's sidetrack, bottom angle, or inner surface of a panel.

**RENEWAL** of this NOA shall be considered after a renewal application has been filed and there has been no change in the applicable building code negatively affecting the performance of this product.

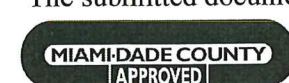
**TERMINATION** of this NOA will occur after the expiration date or if there has been a revision or change in the materials, use, and/ or manufacture of the product or process. Misuse of this NOA as an endorsement of any product, for sales, advertising or any other purposes shall automatically terminate this NOA. Failure to comply with any section of this NOA shall be cause for termination and removal of NOA.

**ADVERTISEMENT:** The NOA number preceded by the words Miami-Dade County, Florida, and followed by the expiration date may be displayed in advertising literature. If any portion of the NOA is displayed, then it shall be done in its entirety.

**INSPECTION:** A copy of this entire NOA shall be provided to the user by the manufacturer or its distributors and shall be available for inspection at the job site at the request of the Building Official.

This NOA consists of this page 1 and evidence pages E-1 and E-2, as well as approval document mentioned above.

The submitted documentation was reviewed by **Helmy A. Makar, P.E., M.S.**



*Helmy A. Makar*  
12/21/2023

NOA-No 23-0928.62  
Expiration Date: 09/22/2027  
Approval Date: 12/21/2023  
Page 1

**NOTICE OF ACCEPTANCE: EVIDENCE SUBMITTED**

**1. EVIDENCE SUBMITTED UNDER PREVIOUS APPROVAL # 22-0721.04**

**A. DRAWINGS**

1. Drawing No. **105609**, titled "M/N 904 16' Wide +46/-52 psf", sheets 1 through 4 of 4, dated 07/08/2022, with revision 2 dated 08/2022, prepared by Clopay Corporation, signed and sealed by Mark Westerfield, P.E. on 08/25/2022.

**B. TESTS**

1. Test reports on 1) Uniform Static Air Pressure Test, Loading per FBC TAS 202-94  
2) Large Missile Impact Test per FBC, TAS 201-94  
3) Cyclic Wind Pressure Loading per FBC, TAS 203-94  
4) Forced Entry Test, per FBC, TAS 202-94  
5) Tensile Test per ASTM E8  
along with marked-up drawings and installation diagram of 16'2"x 8', aluminum garage doors Model 904W8 with windows, prepared by American Test Lab, Inc., Test Report No. **ATLNC 0609.01-21**, dated 06/29/2022, signed and sealed by David W. Johnson, P.E.
2. Test reports on 1) Uniform Static Air Pressure Test, Loading per FBC TAS 202-94  
2) Large Missile Impact Test per FBC, TAS 201-94  
3) Cyclic Wind Pressure Loading per FBC, TAS 203-94  
4) Forced Entry Test, per FBC, TAS 202-94  
5) Tensile Test per ASTM E8  
along with marked-up drawings and installation diagram of 16'2"x 8', aluminum garage doors Model 904W8 with windows, prepared by American Test Lab, Inc., Test Report No. **ATLNC 0601.01-22**, dated 06/13/2022, signed and sealed by David W. Johnson, P.E.

**C. CALCULATIONS**

1. Anchorage and horizontal track calculations prepared by Clopay Building Products Company, dated 07/11/2022, signed and sealed by Mark Westerfield, P.E.

**D. QUALITY ASSURANCE**

1. Miami-Dade Department of Regulatory and Economic Resources (RER).

**E. MATERIAL CERTIFICATIONS**

1. Notice of Acceptance No. **20-0915.22** issued to Kuraray America, Inc. for their **Trosifol Ultraclear, Clear and Color PVB Glass Interlayers**, approved on 11/19/2020, expiring on 07/08/2024.

**F. STATEMENTS**

1. Statement letter of code conformance to the 7<sup>th</sup> edition (2020) of the FBC, issued by Clopay Corporation, dated 07/13/2022, signed and sealed by Mark Westerfield, P.E.
2. Statement letter of no financial interest issued by Clopay Corporation, dated 07/13/2022, signed and sealed by Mark Westerfield, P.E.



Helmy A. Makar, P.E., M.S.  
Product Control Section Supervisor  
NOA-No 23-0928.62  
Expiration Date: 09/22/2027  
Approval Date: 12/21/2023



NOTICE OF ACCEPTANCE: EVIDENCE SUBMITTED

2. NEW EVIDENCE SUBMITTED  
A. DRAWINGS

- 1. Drawing No. 105609, titled "M/N 904 16' Wide +46/-52 psf", sheets 1 through 4 of 4, dated 07/08/2022, with revision 3 dated 09/07/2023, prepared by Clopay Corporation, signed and sealed by Mark Westerfield, P.E. on 09/14/2023.

B. TESTS

- 1. None.

C. CALCULATIONS

- 1. None.

D. QUALITY ASSURANCE


- 1. Miami-Dade Department of Regulatory and Economic Resources (RER).

E. MATERIAL CERTIFICATIONS

- 1. Notice of Acceptance No. 20-0915.22 issued to Kuraray America, Inc. for their Trosifol Ultraclear, Clear and Color PVB Glass Interlayers, approved on 11/19/2020, expiring on 07/08/2024.

G. STATEMENTS

- 1. Statement letter of code conformance to the 7<sup>th</sup> edition (2020) and 8<sup>th</sup> edition (2023) of the FBC, issued by Clopay Corporation, dated 09/15/2023, signed and sealed by Mark Westerfield, P.E.
- 2. Statement letter of no financial interest issued by Clopay Corporation, dated 09/15/2023, signed and sealed by Mark Westerfield, P.E.

  
\_\_\_\_\_  
Helmy A. Makar, P.E., M.S.  
Product Control Section Supervisor  
NOA-No 23-0928.62  
Expiration Date: 09/22/2027  
Approval Date: 12/21/2023

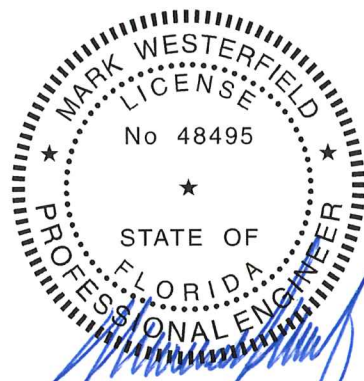
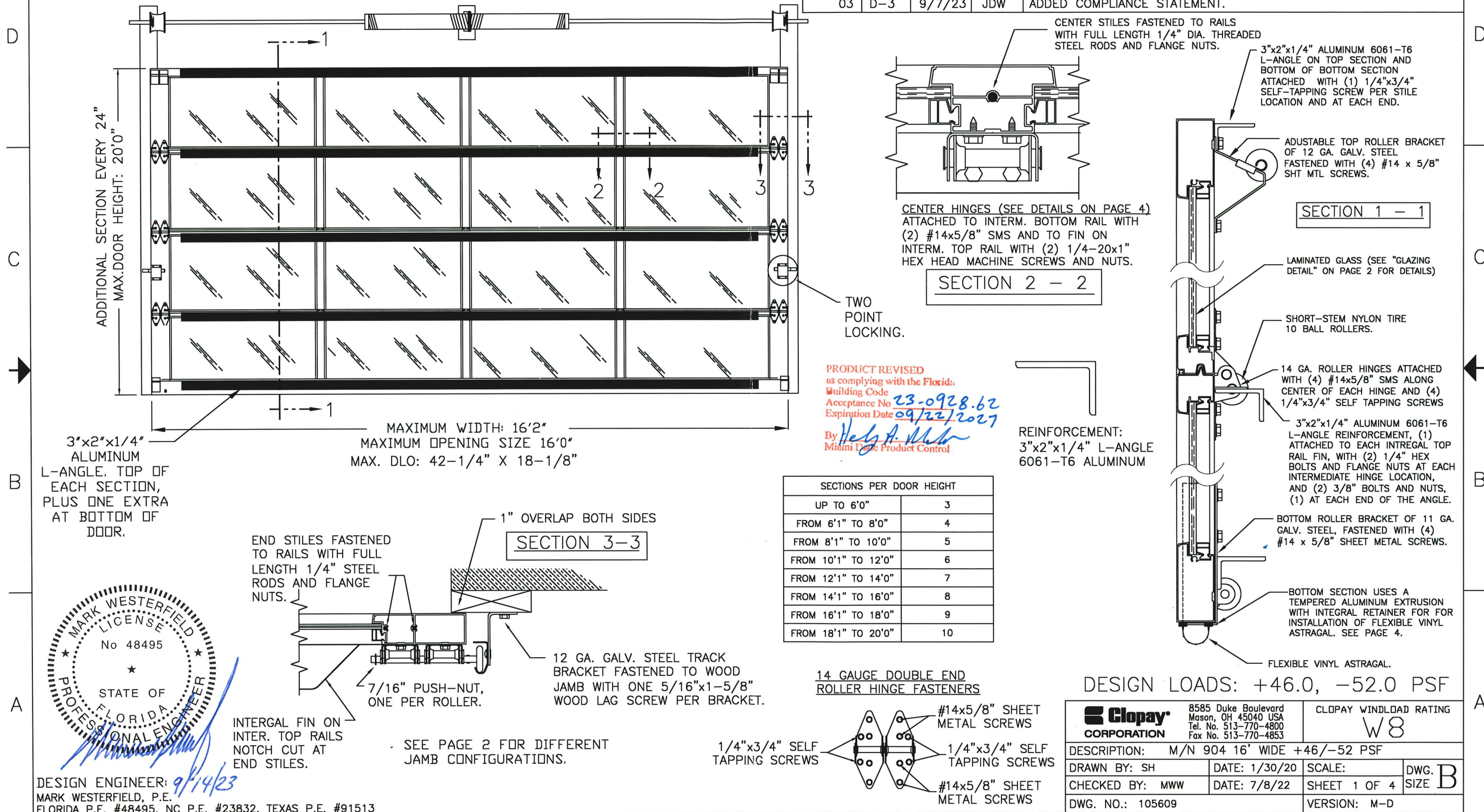
BRAND	MODEL
CLOPAY	904, 904U, AX, AXU
IDEAL	C4AL, C4ALU

THIS PRODUCT CONFORMS TO THE REQUIREMENTS OF 7TH AND 8TH EDITION OF THE FLORIDA BUILDING CODE.

SHEET:  
1 OF 4

# REVISIONS

REV. NO.	ZONE:	DATE:	APPVD:	DESCRIPTION
01	ALL	7/22	MWW	UPDATE FOR M-D SUBMITTAL
02	ALL	8/22	MWW	NOTED 6061-T6 TO 3"x2"x1/4" ANGLE & BOTTOM RAIL THICKNESS
03	D-3	9/7/23	JDW	ADDED COMPLIANCE STATEMENT.



DESIGN ENGINEER: 9/14/23  
MARK WESTERFIELD, P.E.  
FLORIDA P.E. #48495, NC P.E. #23832, TEXAS P.E. #91513

DESIGN LOADS: +46.0, -52.0 PSF

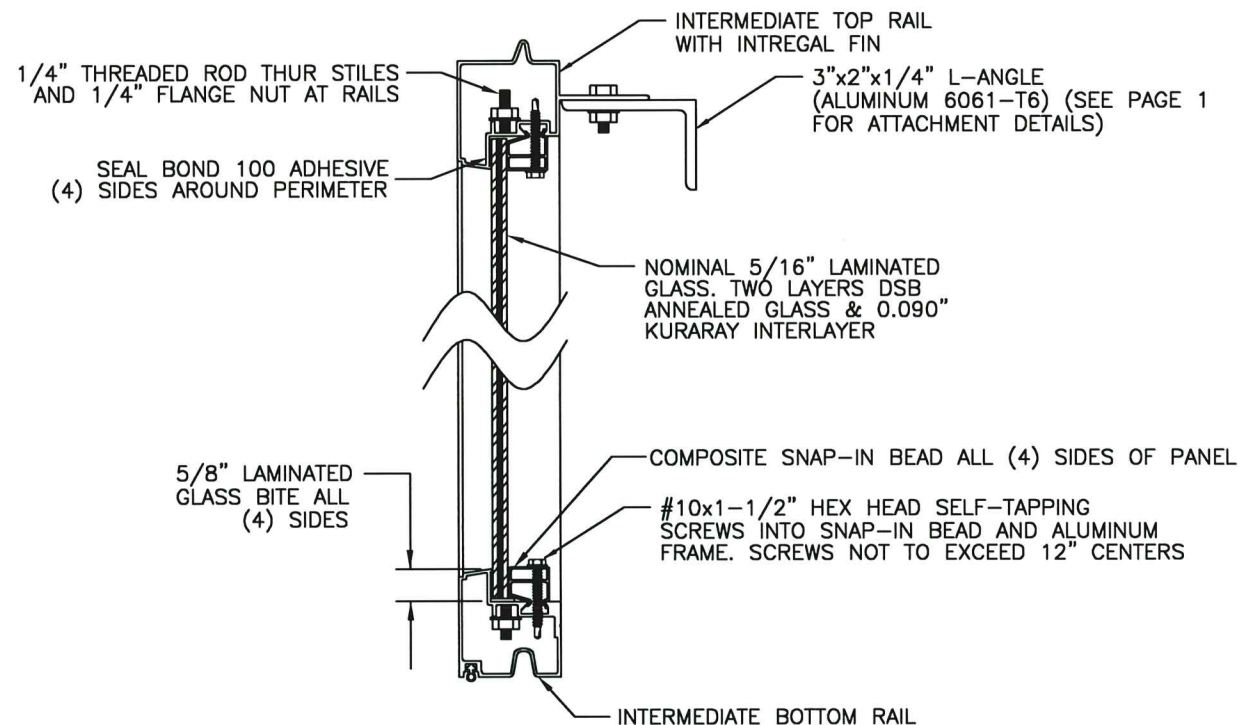
<b>Clopay CORPORATION</b>	8585 Duke Boulevard Mason, OH 45040 USA Tel. No. 513-770-4800 Fax No. 513-770-4853	CLOPAY WINDLOAD RATING <b>W8</b>
DESCRIPTION: M/N 904 16' WIDE +46/-52 PSF		
DRAWN BY: SH	DATE: 1/30/20	SCALE:
CHECKED BY: MWW	DATE: 7/8/22	SHEET 1 OF 4
DWG. NO.: 105609	VERSION: M-D	

DWG. SIZE **B**

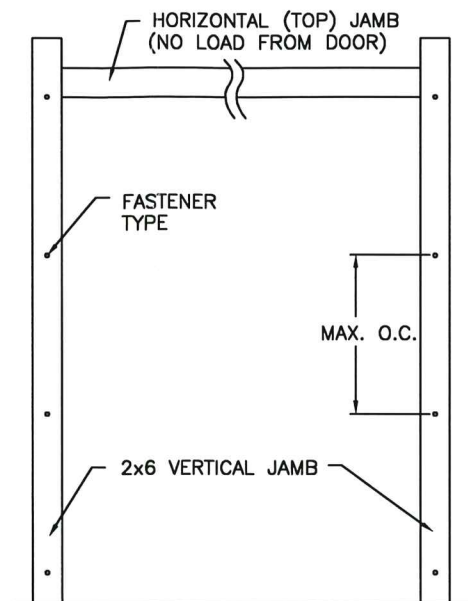


BRAND	MODEL
CLOPAY	904, 904U, AX, AXU
IDEAL	C4AL, C4ALU

SHEET:		REVISIONS				
2 OF 4		REV. NO.	ZONE:	DATE:	ECN NO.	APPVD:
		---	---	---	---	---
		DESCRIPTION				
		SEE PAGE 1 FOR REVISION DETAILS				



GLAZING DETAIL  
INTERMEDIATE SECTION SHOWN



## JAMB TO SUPPORTING STRUCTURE ATTACHMENT

### NOTES:

1. ALL THE LOAD FROM THE DOOR IS TRANSFERRED TO THE TRACK AND THEN FROM THE TRACK TO THE 2x6 VERTICAL SYP (GRADE #2 OR BETTER) JAMBS. NO LOAD FROM THE DOOR IS TRANSFERRED TO THE HORIZONTAL (TOP) JAMB.
2. EACH VERTICAL JAMB SEES A MAXIMUM DESIGN LOAD OF +368 LB. PER LINEAR FOOT OF JAMB.
3. ALL JAMB FASTENERS MAY BE (BUT ARE NOT REQUIRED TO BE) COUNTERSUNK TO PROVIDE A FLUSH MOUNTING SURFACE.
4. A 1/3 STRESS INCREASE FOR WIND LOAD WAS NOT USED IN THE CALCULATION OF ALLOWABLE LOADS FOR ANCHORS AND FASTENERS FOR STEEL, CONCRETE AND MASONRY.

## PREPARATION OF JAMBS BY OTHERS

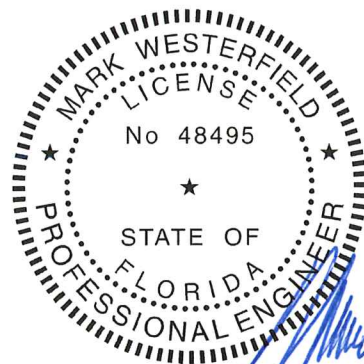
NOTE: THE DESIGN OF THE SUPPORTING STRUCTURAL ELEMENTS SHALL BE THE RESPONSIBILITY OF THE PROFESSIONAL OF RECORD FOR THE BUILDING OR STRUCTURE AND IN ACCORDANCE WITH CURRENT BUILDING CODES FOR THE LOADS LISTED ON THIS DRAWING.

2x6 JAMB TO SUPPORTING STRUCTURE ATTACHMENT  
(NOT TO BE USED FOR ATTACHMENT OF TRACK ANGLE TO 2x6 VERTICAL JAMBS OR SUPPORTING STRUCTURE)

BUILDING TYPE	FASTENER TYPE	MAXIMUM ON-CENTER DISTANCE BETWEEN FASTENERS*	STEEL WASHERS REQUIRED?
C-90 CONCRETE BLOCK	1/4" x 1-1/4" EMBED CRETE-FLEX CONCRETE ANCHOR	7-3/4"	YES
3,350 PSI MIN. CONCRETE	1/4" x 1-3/4" EMBED CRETE-FLEX CONCRETE ANCHOR	20-1/4"	YES
2,000 PSI MIN. CONCRETE	1/4" x 1-3/4" EMBED TAPCON CONCRETE ANCHOR	14-1/4"	YES
2,500 PSI MIN. CONCRETE	3/8" x 1-3/4" EMBED ITW TRUBOLT WEDGE CONCRETE ANCHOR WITH SYP 0.55 SG	14"	1" O.D.
WOOD FRAME (SYP 0.55 SG)	1/2" x 1-1/2" EMBED LAG SCREW WITH 1-3/8" O.D. WASHER	17"	YES
14 GA MIN. STEEL JAMB	1/4" -14 ITW BUILDEX TEKS SELF-DRILLING FASTENER	7-3/4"	NO
12 GA MIN. STEEL JAMB	1/4" -14 ITW BUILDEX TEKS SELF-DRILLING FASTENER	10-3/4"	NO
1/8" MIN. STEEL JAMB	1/4" -14 ITW BUILDEX TEKS SELF-DRILLING FASTENER	12-3/4"	NO

NOTE: FOR DOORS WITH CONTINUOUS OR REVERSE ANGLE TRACK, THESE VALUES CAN BE USED TO DIRECTLY ATTACH THE TRACK ANGLE TO THE WALL.

\* FIRST (BOTTOM) ANCHOR STARTING AT NO MORE THAN HALF OF THE MAXIMUM ON-CENTER DISTANCE. HIGHEST ANCHOR INSTALLED AT LEAST AS HIGH AS THE DOOR OPENING.  
CLOPAY DOES NOT SUPPLY JAMB ATTACHMENT FASTENERS.  
MINIMUM DISTANCE BETWEEN CENTER OF ANCHOR AND EDGE OF CONCRETE BLOCK: 2-1/2", EXCLUDING STUCCO THICKNESS.



DESIGN ENGINEER:  
MARK WESTERFIELD, P.E.  
FLORIDA P.E. #48495, NC P.E. #23832, TEXAS P.E. #91513

PRODUCT REVISED  
as complying with the Florida  
Building Code  
Acceptance No. 23-0928.62  
Expiration Date 09/22/2027  
By *H. G. A. Miller*  
Miami Product Control

<b>Clopay</b> CORPORATION		8585 Duke Boulevard Mason, OH 45040 USA Tel. No. 513-770-4800 Fax No. 513-770-4853	CLOPAY WINDLOAD RATING <b>W8</b>
DESCRIPTION: M/N 904 16' WIDE +46/-52 PSF			
DRAWN BY: SH	DATE: 1/30/20	SCALE:	DWG. B
CHECKED BY: MWW	DATE: 7/8/22	SHEET 2 OF 4	SIZE
DWG. NO.: 105609		VERSION: M-D	

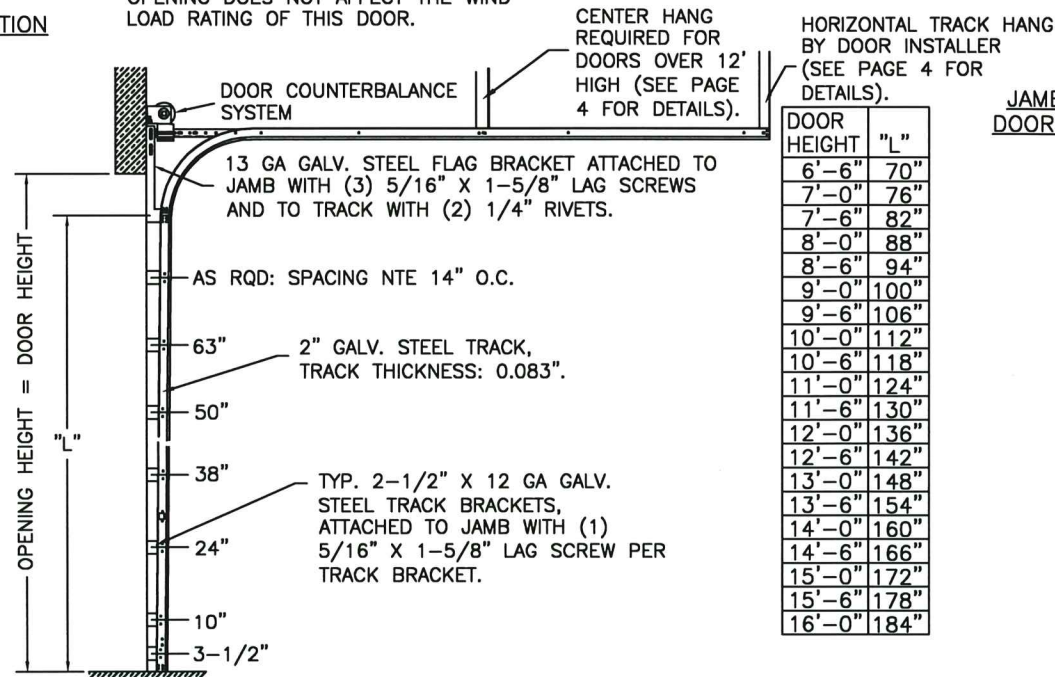


BRAND	MODEL
CLOPAY	904, 904U, AX, AXU
IDEAL	C4AL, C4ALU

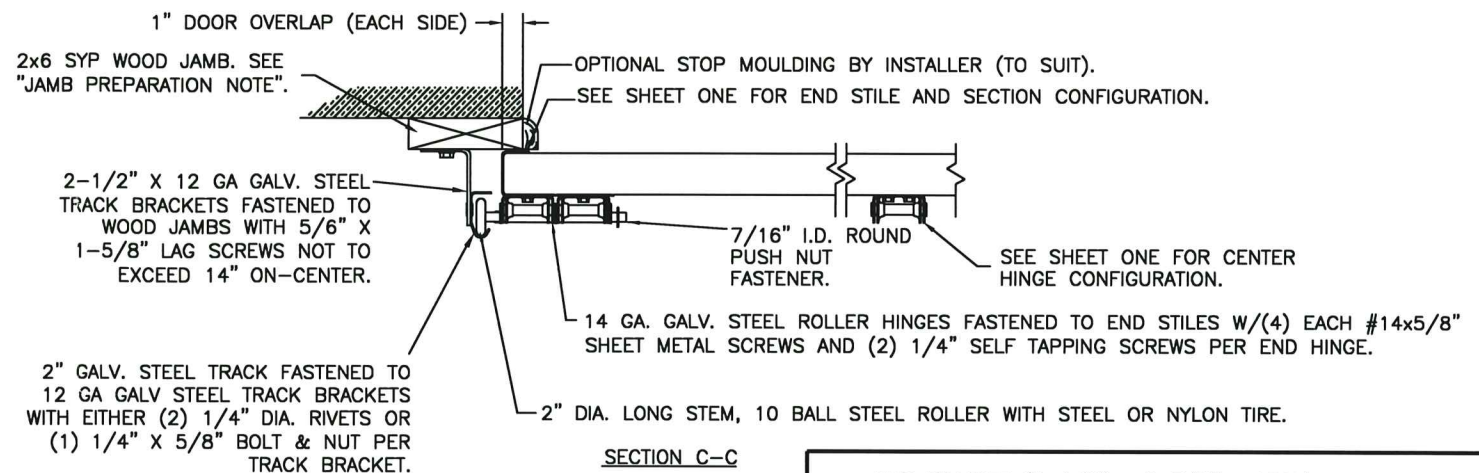
SHEET		REVISIONS				
3 OF 4		REV. NO.	ZONE:	DATE:	ECN NO.	APPVD:
		--	--	--	--	--
		DESCRIPTION				
		SEE PAGE 1 FOR REVISION DETAILS				

NOTE: HORIZONTAL TRACK CONFIGURATION ABOVE THE DOOR OPENING DOES NOT AFFECT THE WIND LOAD RATING OF THIS DOOR.

## 2" TRACK CONFIGURATION



## JAMB CONFIGURATION DOORS WITH 2" TRACK.



## SECTION C-C

## PREPARATION OF JAMBS BY OTHERS.

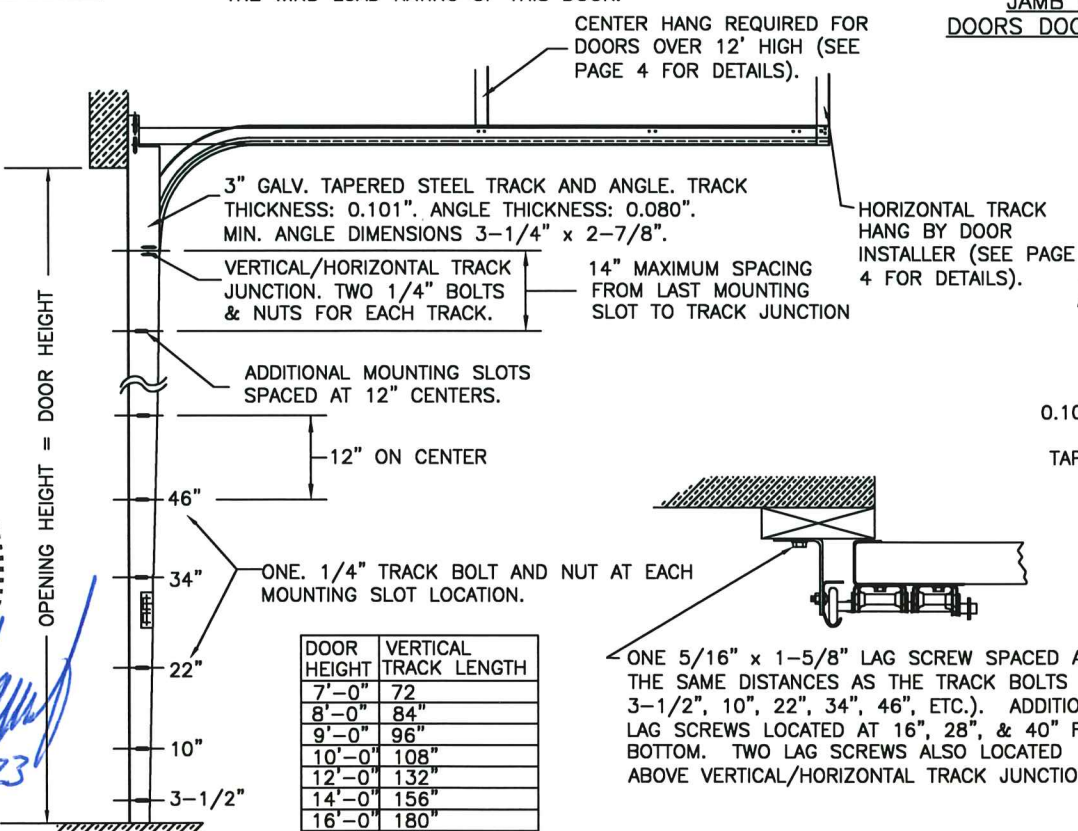
LHR BRACKET (2-1/2" x 5-3/4" x 12GA) ATTACHED WITH (2) 1/4" x 3/4" SELF TAPPING SCREWS. NOTE THAT LHR BRACKETS ARE ALSO USED WITH "DOUBLE END STILE" AS SHOWN IN ZONE B-3 SHEET 1.

DOUBLE TRACK LOW HEADROOM OPTION (AVAIL. FOR BOTH 2" AND 3" TRACK)

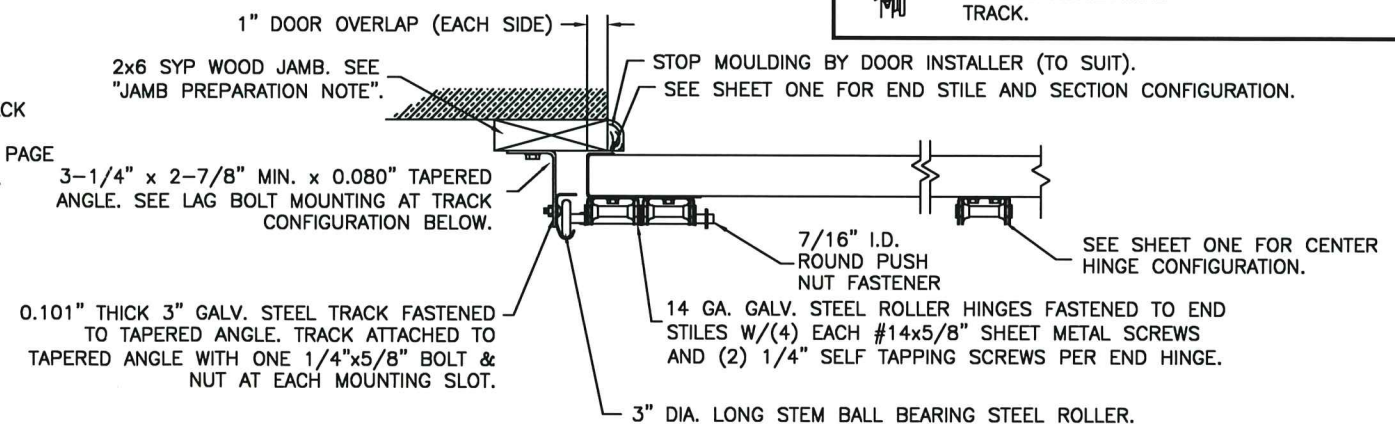


## 3" TRACK CONFIGURATION

NOTE: HORIZONTAL TRACK CONFIGURATION ABOVE THE DOOR OPENING DOES NOT AFFECT THE WIND LOAD RATING OF THIS DOOR.



## JAMB CONFIGURATION DOORS WITH 3" TRACK.

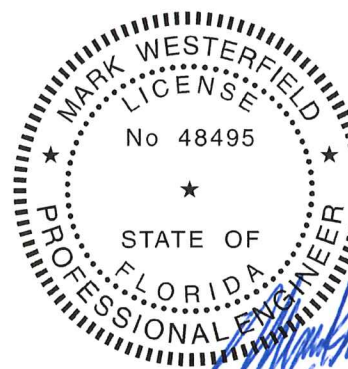


## SECTION C-C

## PREPARATION OF JAMBS BY OTHERS.

PRODUCT REVISED as complying with the Florida Building Code  
 Acceptance No. 23-0928.62  
 Expiration Date 09/22/2027  
 By *Heidi A. Miller*  
 Miami Date Product Control

<b>Clopay CORPORATION</b>		8585 Duke Boulevard Mason, OH 45040 USA Tel. No. 513-770-4800 Fax No. 513-770-4853	CLOPAY WINDLOAD RATING <b>W8</b>
DESCRIPTION: M/N 904 16' WIDE +46/-52 PSF			
DRAWN BY: SH	DATE: 1/30/20	SCALE:	DWG. SIZE <b>B</b>
CHECKED BY: MWW	DATE: 7/8/22	SHEET 3 OF 4	
DWG. NO.: 105608	VERSION: M-D		



DESIGN ENGINEER:  
 MARK WESTERFIELD, P.E.  
 FLORIDA P.E. #48495, NC P.E. #23832, TEXAS P.E. #91513



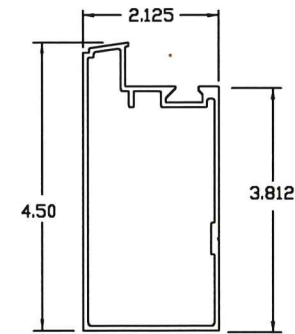
BRAND	MODEL
CLOPAY	904, 904U, AX, AXU
IDEAL	C4AL, C4ALU

# ALUMINUM PROFILES, HARDWARE & TRACK PARTS

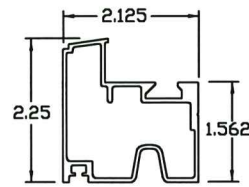
SHEET:  
4 OF 4

REVISIONS					
REV. NO.	ZONE:	DATE:	ECN NO.	APPVD:	DESCRIPTION
--	--	---	--	--	SEE PAGE 1 FOR REVISION DETAILS

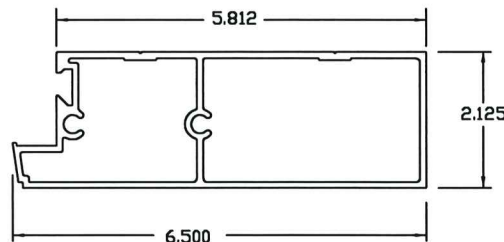
D



**BOTTOM & TOP RAIL**  
105008 - .075" WALL TOP  
AND .180" WALL BOTTOM

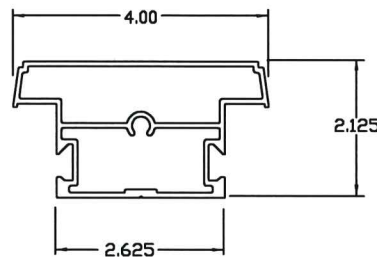


**INTER. BOTTOM RAIL**  
105014 - .062" WALL

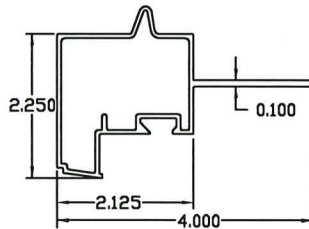


**DOUBLE END STILE**  
105010 - .095" WALL

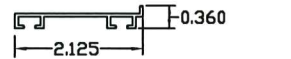
ALUMINUM PROFILES (6063-T5)



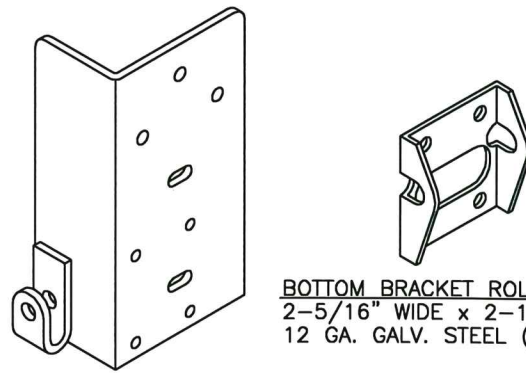
**CENTER STILE**  
105011 - .075" WALL



**INTER. TOP RAIL W/FIN**  
105012 - .062" WALL

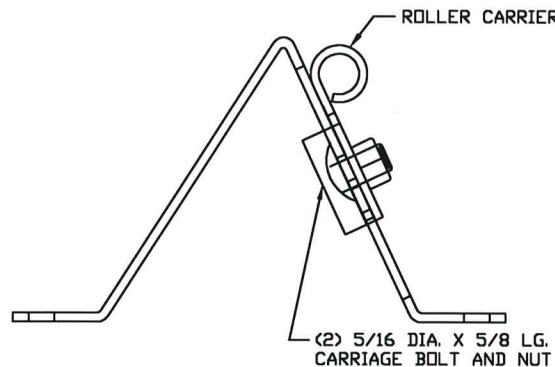


**BOTTOM ASTRAGAL RETAINER**  
100624 - .050" WALL

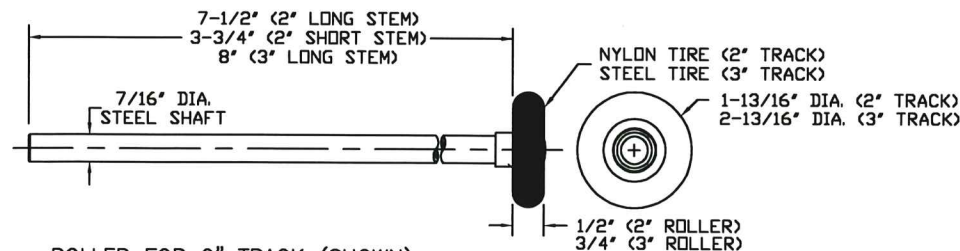


**BOTTOM BRACKET ROLLER CARRIER**  
2-5/16" WIDE x 2-1/2" TALL  
12 GA. GALV. STEEL (0.097" THICK)

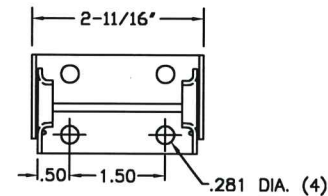
**BOTTOM BRACKET**  
3-1/8" WIDE x 6" TALL x 1-7/8" DEEP  
11 GA. GALV. STEEL (0.114" THICK)



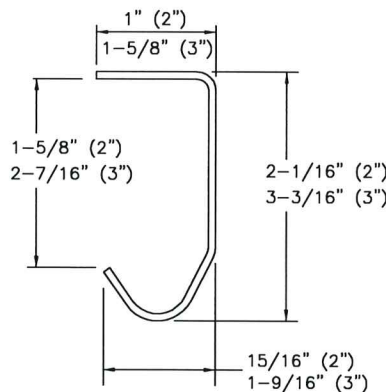
**TOP ROLLER BRACKET**  
5-3/8" LONG x 3-1/8" TALL x 2-3/4" WIDE  
MAIN PART: 12 GA. GALV. STEEL (0.099")  
ROLLER CARRIER: 13 GA. GALV. STEEL (0.085")



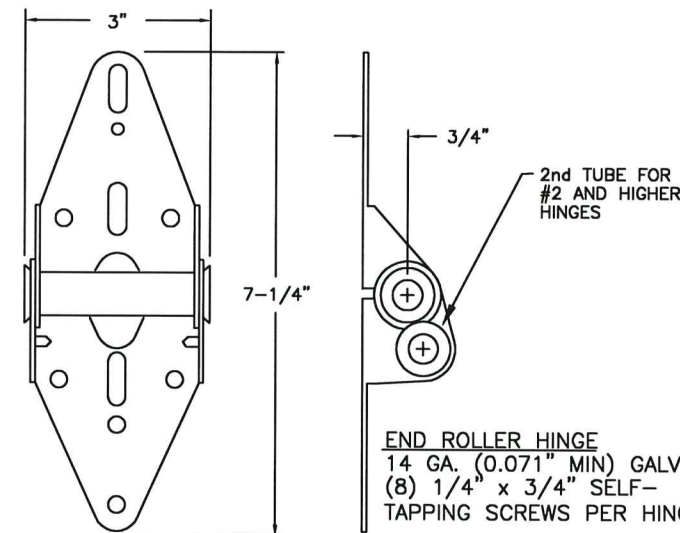
**ROLLER FOR 2" TRACK (SHOWN)**  
ROLLER FOR 3" TRACK FOR DOORS OVER 800 LB.  
OR OPTIONAL FOR DOORS LESS THAN 800 LB.



**2-LEAF CENTER HINGE**  
14 GA. GALV. STEEL



**TRACK (2" AND 3")**  
0.075" OR 0.083" GALV. STEEL (2")  
0.101" GALV. STEEL (3")

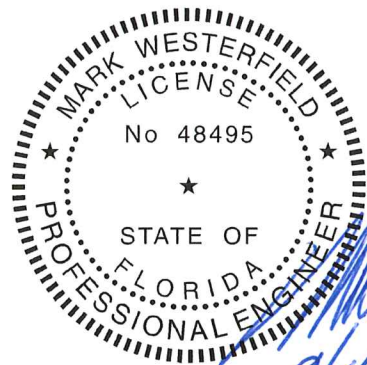


**END ROLLER HINGE**  
14 GA. (0.071" MIN) GALV. STEEL  
(8) 1/4" x 3/4" SELF-TAPPING SCREWS PER HINGE

C

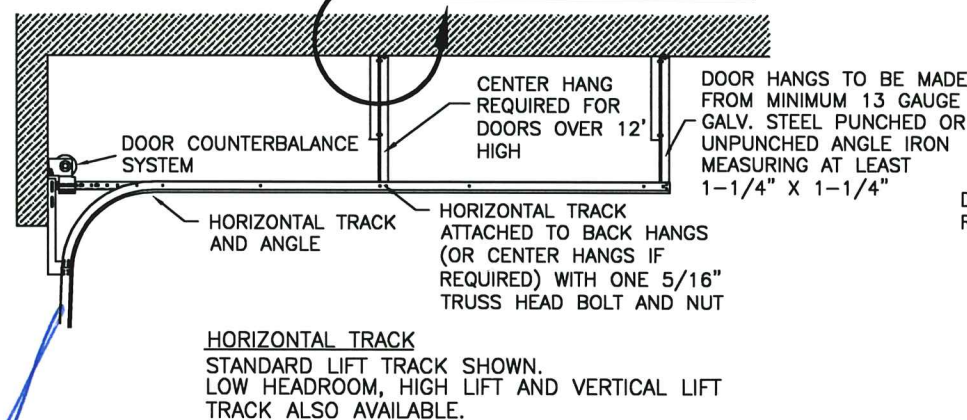
B

A



DESIGN ENGINEER:  
MARK WESTERFIELD, P.E.  
FLORIDA P.E. #48495, NC P.E. #23832, TEXAS P.E. #91513

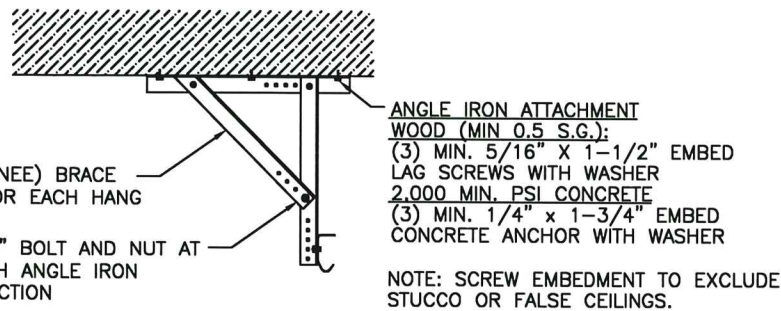
SEE HANG DETAIL A-A



DOOR HANGS TO BE MADE FROM MINIMUM 13 GAUGE GALV. STEEL PUNCHED OR UNPUNCHED ANGLE IRON MEASURING AT LEAST 1-1/4" X 1-1/4"

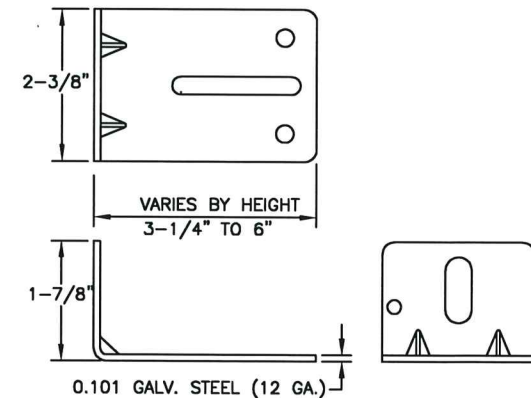
DIAGONAL (KNEE) BRACE REQUIRED FOR EACH HANG  
3/8" BOLT AND NUT AT EACH ANGLE IRON JUNCTION

**HANG DETAIL A-A**  
HANGS CAN BE MOVED TO MATCH CEILING STRUCTURE



**ANGLE IRON ATTACHMENT**  
WOOD (MIN 0.5 S.G.):  
(3) MIN. 5/16" X 1-1/2" EMBED LAG SCREWS WITH WASHER  
2,000 MIN. PSI CONCRETE  
(3) MIN. 1/4" x 1-3/4" EMBED CONCRETE ANCHOR WITH WASHER

NOTE: SCREW EMBEDMENT TO EXCLUDE STUCCO OR FALSE CEILINGS.



**TRACK BRACKETS**  
ATTACHED TO VERTICAL TRACKS

**PRODUCT REVISED**  
as complying with the Florida Building Code  
Acceptance No. 23-0924.62  
Expiration Date 09/22/2027  
By: *Heidi A. Miller*  
Miami Design Product Control

<b>Clopay CORPORATION</b>		8585 Duke Boulevard Mason, OH 45040 USA Tel. No. 513-770-4800 Fax No. 513-770-4853	CLOPAY WINDLOAD RATING <b>W8</b>
DESCRIPTION: M/N 904 16' WIDE +46/-52 PSF			
DRAWN BY: SH	DATE: 1/30/20	SCALE:	DWG. SIZE <b>B</b>
CHECKED BY: MWW	DATE: 7/8/22	SHEET 4 OF 4	
DWG. NO.: 105609	VERSION: M-D		

4

3

2

1

A