



DEPARTMENT OF REGULATORY AND ECONOMIC RESOURCES (RER)  
BOARD AND CODE ADMINISTRATION DIVISION

**NOTICE OF ACCEPTANCE (NOA)**

MIAMI-DADE COUNTY  
PRODUCT CONTROL SECTION  
11805 SW 26 Street, Room 208  
Miami, Florida 33175-2474  
T (786) 315-2590 F (786) 315-2599  
[www.miamidade.gov/economy](http://www.miamidade.gov/economy)

**Clopay Corporation  
8585 Duke Boulevard  
Mason, OH 45040**

**SCOPE:**

This NOA is being issued under the applicable rules and regulations governing the use of construction materials. The documentation submitted has been reviewed and accepted by Miami-Dade County RER-Product Control Section to be used in Miami-Dade County and other areas, where allowed by the Authority Having Jurisdiction (AHJ).

This NOA shall not be valid after the expiration date stated below. The Miami-Dade County Product Control Section (In Miami-Dade County) and/or the AHJ (in areas other than Miami-Dade County) reserve the right to have this product or material tested for quality assurance purposes. If this product or material fails to perform in the accepted manner, the manufacturer will incur the expense of such testing and the AHJ may immediately revoke, modify, or suspend the use of such product or material within their jurisdiction. RER reserves the right to revoke this acceptance, if it is determined by Miami-Dade County Product Control Section that this product or material fails to meet the requirements of the applicable building code.

This product is approved as described herein and has been designed to comply with the Florida Building Code, including the High Velocity Hurricane Zone.

**DESCRIPTION: 2” Gallery EPS Insulated W6 DP38 Steel Sectional Garage Door up to 9’-0” Wide w/ Optional Impact Resistant Lites**

**APPROVAL DOCUMENT:** Drawing No. **103954**, titled “Gallery 2” EPS Single Car +38/-44 PSF”, sheets 1 through 4 of 4, dated 02/07/2013, with revision **10** dated 09/06/2023, prepared by Clopay Building Products Company, signed and sealed by Scott Hamilton, P.E., bearing the Miami-Dade County Product Control revision stamp with the Notice of Acceptance number and expiration date by the Miami-Dade County Product Control Section.

**MISSILE IMPACT RATING: Large and Small Missile Impact Resistant**

**LABELING:** A permanent label with the manufacturer’s name or logo, manufacturing address, model number, the positive and negative design pressure rating, indicate impact rated if applicable, installation instruction drawing reference number, approval number (NOA), the applicable test standards, and the statement reading ‘Miami-Dade County Product Control Approved’ is to be located on the door’s side track, bottom angle, or inner surface of a panel.

**RENEWAL** of this NOA shall be considered after a renewal application has been filed and there has been no change in the applicable building code negatively affecting the performance of this product.

**TERMINATION** of this NOA will occur after the expiration date or if there has been a revision or change in the materials, use, and/or manufacture of the product or process. Misuse of this NOA as an endorsement of any product, for sales, advertising or any other purposes shall automatically terminate this NOA. Failure to comply with any section of this NOA shall be cause for termination and removal of NOA.

**ADVERTISEMENT:** The NOA number preceded by the words Miami-Dade County, Florida, and followed by the expiration date may be displayed in advertising literature. If any portion of the NOA is displayed, then it shall be done in its entirety.

**INSPECTION:** A copy of this entire NOA shall be provided to the user by the manufacturer or its distributors and shall be available for inspection at the job site at the request of the Building Official.

This NOA revises NOA # **20-0922.45** and consists of this page 1 and evidence pages E-1, E-2 and E3, as well as approval document mentioned above.

The submitted documentation was reviewed by **Carlos M. Utrera, P.E.**



NOA-No 23-0928.70  
Expiration Date: February 05, 2025  
Approval Date: November 02, 2023  
Page 1

**Clopay Corporation**

**NOTICE OF ACCEPTANCE: EVIDENCE SUBMITTED**

**1. Evidence submitted under previous NOA's**

**A. DRAWINGS**

1. Drawing No. **103954**, titled "Gallery 2" EPS Single Car +38/-44 PSF", sheets 1 through 4 of 4, dated 02/07/2013, with revision **08** dated 07/18/2017, prepared by Clopay Building Products Company, signed and sealed by Scott Hamilton, P.E.  
**"Submitted under NOA #17-1016.25"**

**B. TESTS**

1. Test reports on 1) Uniform Static Air Pressure Test, Loading per FBC TAS 202-94  
2) Large Missile Impact Test per FBC, TAS 201-94  
3) Cyclic Wind Pressure Loading per FBC, TAS 203-94  
4) Forced Entry Test, per FBC, TAS 202-94  
5) Tensile Test per ASTM E8

Along with marked-up drawings and installation diagram of 9'x 8', 27ga steel garage door Model GD2LPW6 with Lexan MR10 windows, prepared by American Test Lab, Inc., Test Report No. **ATLNC 0304-01-13**, dated 05/01/2013 and Addendum to Test Report No. **ATLNC 0304.01-13**, dated 11/10/2014,, signed and sealed by David W. Johnson, P.E.  
**"Submitted under NOA # 14-0708.04"**

2. Test reports on 1) Uniform Static Air Pressure Test, Loading per FBC TAS 202-94  
2) Large Missile Impact Test per FBC, TAS 201-94  
3) Cyclic Wind Pressure Loading per FBC, TAS 203-94  
4) Forced Entry Test, per FBC, TAS 202-94  
5) Tensile Test per ASTM E8

Along with marked-up drawings and installation diagram of 16'2"x 8', 27ga steel garage door Model GD2LPW8 with MAK SL and/or MAK 15 windows, prepared by American Test Lab, Inc., Test Report No. **ATLNC 1105-01-13**, dated 01/14/2014, signed and sealed by David W. Johnson, P.E.  
**"Submitted under NOA # 14-0708.04"**

3. Test report on Salt Spray per ASTM B117 of painted G40 galvanized coated panels, prepared by Stork Materials Technology, Test Report No. **30160-04-63365**, dated 01/26/2005, signed by John D. Lee, P.E.  
**"Submitted under NOA # 14-0708.04"**

**C. CALCULATIONS**

1. Jamb anchor calculations prepared by Clopay Building Products Company, dated 07/02/2014, signed and sealed by Scott Hamilton, P.E. **"Submitted under NOA # 14-0708.04"**

**D. QUALITY ASSURANCE**

1. Miami-Dade Department of Regulatory and Economic Resources (RER)

**E. MATERIAL CERTIFICATIONS**

1. Notice of Acceptance No. **15-0915.08** issued to SABIC Innovative Plastics, US LLC for their Lexan Polycarbonate Sheet Products, approved on 12/10/2015, expiring on 07/17/2018.
2. Notice of Acceptance No. **17-0410.01** issued to Bayer Material Science LLC (MA) for their Makrolon Polycarbonate Sheets, approved on 06/08/2017, expiring on 08/27/2022.
3. Test report on Surface Burning Characteristics, per ASTM E84 of Premier Industries' Type I EPS, Report No. **3082960-500**, prepared by Intertek Testing Services, NA, Inc., dated 10/04/2005, signed by Javier Trevino.



---

**Carlos M. Utrera, P.E.**  
**Product Control Examiner**  
**NOA-No 23-0928.70**  
**Expiration Date: February 05, 2025**  
**Approval Date: November 02, 2023**

**NOTICE OF ACCEPTANCE: EVIDENCE SUBMITTED**

**E. MATERIAL CERTIFICATIONS (CONTINUED)**

4. Test report on Ignition Properties of Plastics per ASTM D1929 of Premier Industries' Type I EPS, Report No. **3082959-500**, prepared by Intertek Testing Services, NA, Inc., dated 09/16/2005, signed by C. Anthony Peñaloza.
5. Test report on Surface Burning Characteristics, per ASTM E84 of Falcon's Type I EPS, Report No. **3094867SAT-001**, prepared by Intertek Testing Services, NA, Inc., dated 04/13/2006, signed by C. Anthony Peñaloza.
6. Test report on Ignition Properties of Plastics per ASTM D1929 of Falcon's Type I EPS, Report No. **3094867SAT-002**, prepared by Intertek Testing Services, NA, Inc., dated 04/04/2006, signed by C. Anthony Peñaloza.

**F. STATEMENTS**

1. Statement letter of code conformance to 2010 FBC and Statement letter of no financial interest issued by Clopay Building Products Company, dated 07/02/2014, signed and sealed by Scott Hamilton, P.E. ***"Submitted under NOA # 14-0708.04"***
2. Statement letter of code conformance with the 2010 and the 5<sup>th</sup> edition (2014) FBC issued by Clopay Building Products Company, dated 02/18/2015, signed and sealed by Scott Hamilton, P.E. ***"Submitted under NOA # 15-0225.27"***
3. Statement letter of code conformance to **6<sup>th</sup> Edition (2017) FBC**, issued by Clopay Building Products Company, dated 10/04/2017, signed and sealed by Scott Hamilton, P.E. ***"Submitted under NOA #17-1016.25"***

**2. Evidence submitted under NOA # 20-0922.45**

**A. DRAWINGS**

1. Drawing No. **103954**, titled "Gallery 2" EPS Single Car +38/-44 PSF", sheets 1 through 4 of 4, dated 02/07/2013, with revision **08** dated 07/18/2017, prepared by Clopay Building Products Company, signed and sealed by Scott Hamilton, P.E. on 10/21/2019.

**B. TESTS**

1. None.

**C. CALCULATIONS**

1. None.

**D. QUALITY ASSURANCE**

1. Miami-Dade Department of Regulatory and Economic Resources (RER).

**E. MATERIAL CERTIFICATIONS**

1. None.

**F. STATEMENTS**

1. Statement letter of code conformance to the 6<sup>th</sup> Edition (2017) FBC and 7<sup>th</sup> Edition (2020) and Statement letter of no financial interest, issued by Clopay Building Products Company, dated 10/21/2019, signed and sealed by Scott Hamilton, P.E.



---

**Carlos M. Utrera, P.E.**  
**Product Control Examiner**  
**NOA-No 23-0928.70**  
**Expiration Date: February 05, 2025**  
**Approval Date: November 02, 2023**

**NOTICE OF ACCEPTANCE: EVIDENCE SUBMITTED**

**3. New evidence submitted**

**A. DRAWINGS**

2. Drawing No. **103954**, titled “Gallery 2” EPS Single Car +38/-44 PSF”, sheets 1 through 4 of 4, dated 02/07/2013, with revision **10** dated 09/06/2023, prepared by Clopay Building Products Company, signed and sealed by Scott Hamilton, P.E.

**B. TESTS**

1. None.

**C. CALCULATIONS**

1. None.

**E. QUALITY ASSURANCE**

1. Miami-Dade Department of Regulatory and Economic Resources (RER).

**F. MATERIAL CERTIFICATIONS**

2. None.

**G. STATEMENTS**

1. Statement letter of code conformance to the **8<sup>th</sup> Edition (2023)**, issued by Clopay Building Products Company, dated 09/15/2023, signed and sealed by Scott Hamilton, P.E.



---

**Carlos M. Utrera, P.E.**  
**Product Control Examiner**  
**NOA-No 23-0928.70**  
**Expiration Date: February 05, 2025**  
**Approval Date: November 02, 2023**

MODELS	SHORT	LONG
CLOPAY GALLERY	GD2SP, GR2SP	GD2LP, GR2LP
HOLMES ARTISTRY	AR2SP	AR2LP
IDEAL EXPRESSIONS	ED2SP	ED2LP

MODELS	FLUSH	MINOR RIBS
CLOPAY CLASSIC	4302, HDGC	4305, HDGR
HOLMES CLASSIC	6202	6205
IDEAL CLASSIC	SFC68	SFR68

SHEET:  
1 OF 4

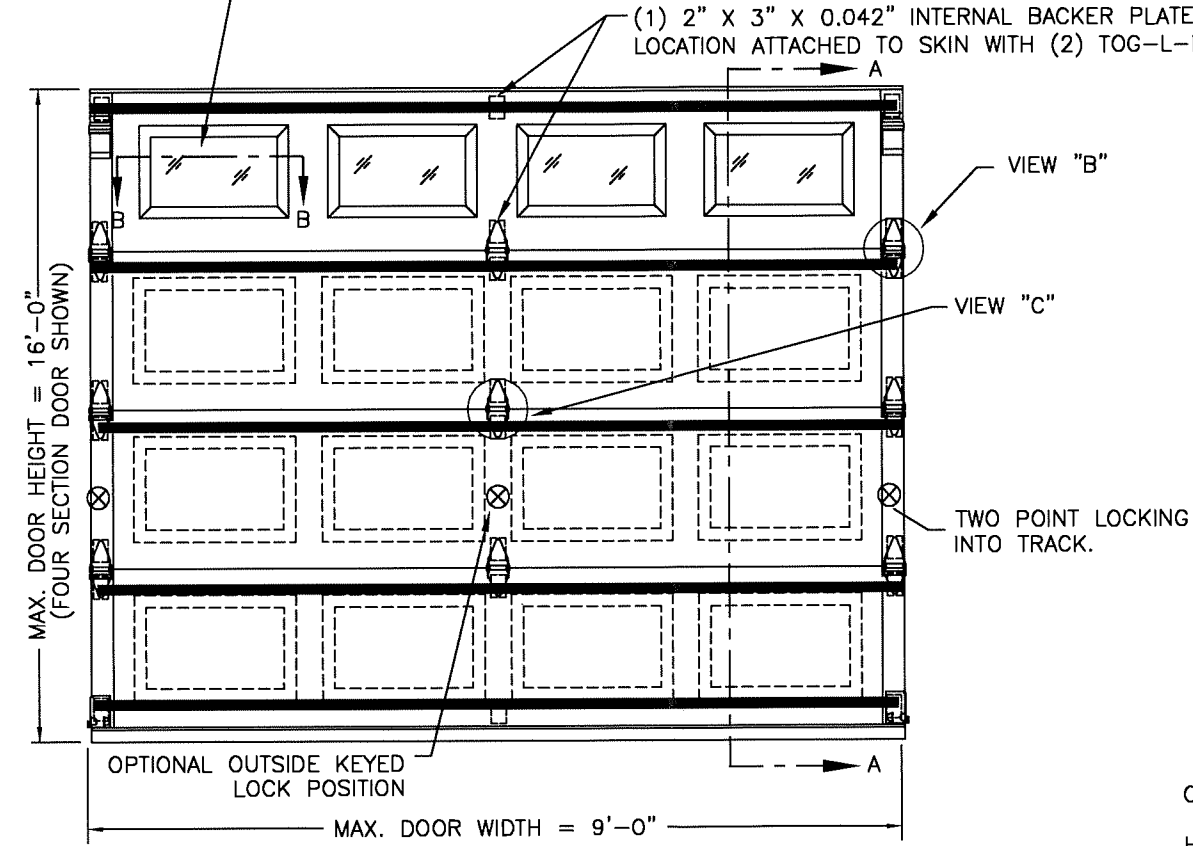
REVISIONS					
REV. NO.	ZONE:	DATE:	ECN NO.	APPVD:	DESCRIPTION
05	-	11/12/14	-	SH	REVISED FOR DADE.
06	-	2/2015	-	SH	ADDED CODE COMPLIANCE STATEMENT.
07	-	9/20/16	-	SH	ADDED RIBBED MODELS 4305, HDGR, 6205, SFR68
08	-	7/18/17	-	SH	UPDATED CODE COMPLIANCE STATEMENT TO ADD 6TH EDITION FBC.
09	-	9/9/20	-	SH	UPDATED TITLE BLOCK AND CODE COMPLIANCE STATEMENT TO 7TH
10	-	9/6/23	-	JDW	UPDATED CODE COMPLIANCE STATEMENT TO ADD 8TH EDITION FBC

OPTIONAL GLAZING SHALL BE IMPACT RESISTANT GLAZING. MAXIMUM GLAZING SIZE (DLO) IS 38-1/2"x13". GLAZING MAY BE SHORT-PANEL (SHOWN) OR LONG-PANEL (NOT SHOWN). SEE SECTION B-B ON SHEET 2 FOR DETAILS. GLAZING MAY BE INSTALLED IN TOP SECTION (SHOWN) OR INTERMEDIATE SECTION (NOT SHOWN).

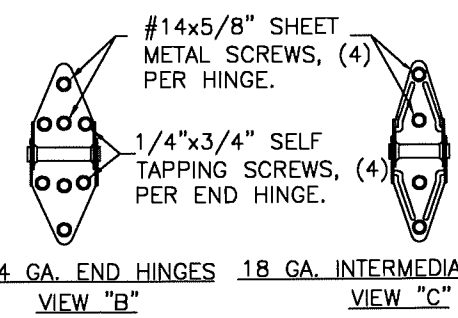
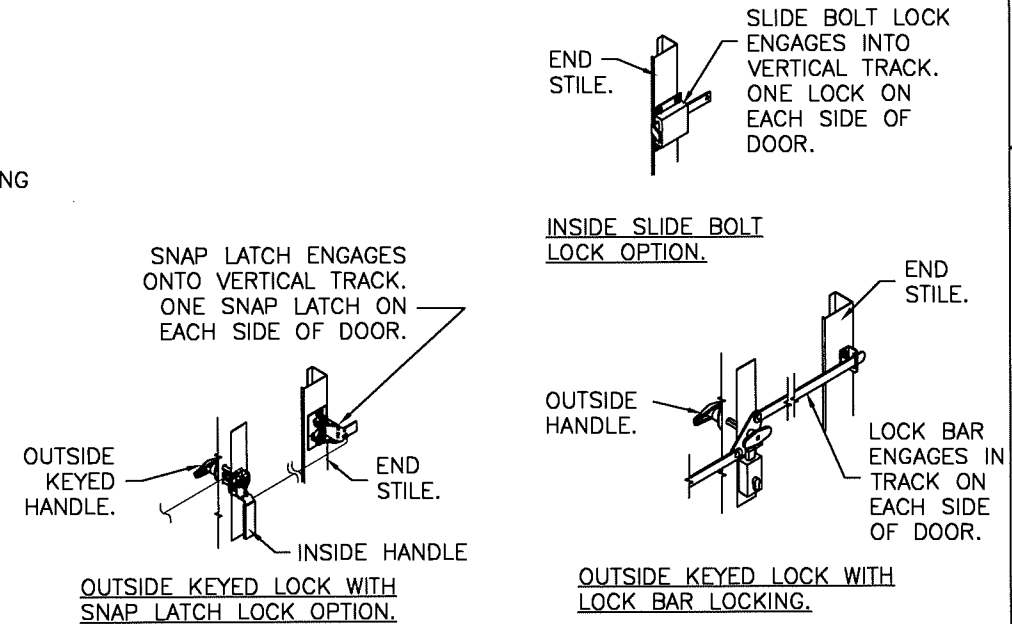
THIS PRODUCT CONFORMS TO THE REQUIREMENTS OF 7TH AND 8TH EDITION OF THE FLORIDA BUILDING CODE

DOOR HEIGHT	# OF SECTIONS	# OF U-BARS
UP TO 6'0"	3	4
6'3" TO 8'0"	4	5
8'3" TO 10'0"	5	6
10'3" TO 12'0"	6	7
12'3" TO 14'0"	7	8
14'3" TO 16'0"	8	9
MAX SECTION HEIGHT: 24'		

DOOR WIDTH	# OF INTERM. HINGES/JOINT
6'2" TO 7'6"	2
7'8" TO 9'0"	1



SHORT PANEL SHOWN.  
LONG PANEL AND FLUSH ALSO AVAILABLE.



**PRODUCT REVISED**  
as complying with the Florida Building Code  
NOA-No. 23-0928.70  
Expiration Date 02/05/2025  
By *[Signature]*  
Miami-Dade Product Control

DESIGN LOADS: +38.0 P.S.F. & -44.0 P.S.F.

Unless Stated Otherwise TOLERANCES are  
.0 = ±.031  
.00 = ±.015  
.000 = ±.005  
.0000 = ±.001  
Degrees = ±1/2"  
Unless Stated Otherwise DIMENSIONS ARE IN INCHES.

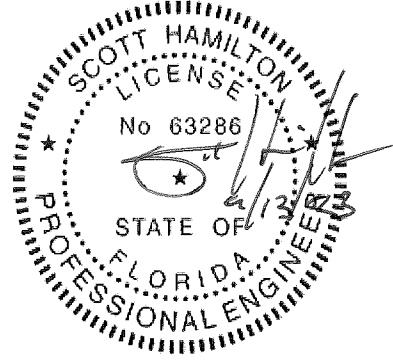
**Clopay** CORPORATION  
8585 Duke Boulevard  
Mason, OH 45040 USA  
Tel. No. 513-770-4800  
Fax No. 513-770-4853

MANUFACTURING PRODUCT CODE  
DSIE-1F471

PART NO.: N/A

WINDLOAD RATING  
W6 DP38

DESCRIPTION: GALLERY 2" EPS SINGLE CAR +38/-44 PSF	SCALE: NTS	DWG. SIZE B
DRAWN BY: SH	DATE: 2/7/13	SHEET 1 OF 4
CHECKED BY: --	DATE: --	VER: MD
DWG. NO.: 103954		



DESIGN ENGINEER:  
SCOTT HAMILTON, P.E.  
FLORIDA LICENSE No. 63286



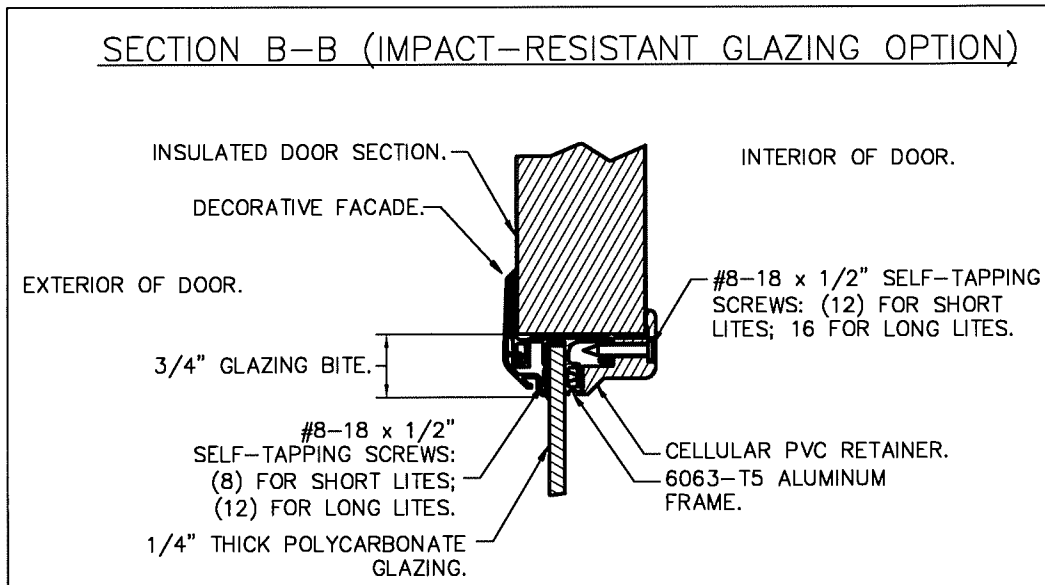
MODELS	SHORT	LONG
CLOPAY GALLERY	GD2SP, GR2SP	GD2LP, GR2LP
HOLMES ARTISTRY	AR2SP	AR2LP
IDEAL EXPRESSIONS	ED2SP	ED2LP

MODELS	FLUSH	MINOR RIBS
CLOPAY CLASSIC	4302, HDGC	4305, HDGR
HOLMES CLASSIC	6202	6205
IDEAL CLASSIC	SFC68	SFR68

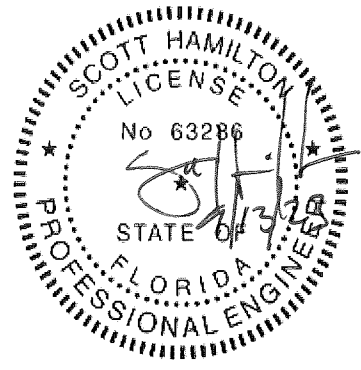
SHEET:  
2 OF 4

REVISIONS					
REV. NO.	ZONE:	DATE:	ECN NO.	APPVD:	DESCRIPTION
10	-	-	-	-	SEE REVISION HISTORY ON SHEET ONE.

**IMPACT-RESISTANT CONSTRUCTION:**  
 SOLID DOORS (NO GLAZING) OR DOORS WITH OPTIONAL IMPACT-RESISTANT GLAZING ARE IMPACT-RESISTANT. OPTIONAL IMPACT RESISTANT ASSEMBLY CONSISTS OF ALUMINUM FRONT FRAME AND SABIC IP LEXAN 9034 (VERSIONS ALSO APPROVED: MR10, 9030, 90318, 90316, 90317, 90311, 90314, 90355) OR BAYER MAKROLON GP (VERSIONS ALSO APPROVED: SL, AR, 15), APPROVED CC1 PLASTICS IN ACCORDANCE WITH IBC/FBC 2606 AND APPROVED C1 PLASTICS IN ACCORDANCE WITH FBC 2612. THE ENTIRE DOOR ASSEMBLY INSTALLED IN COMPLIANCE WITH THIS SECTION MEETS THE WIND LOAD REQUIREMENTS OF THE FLORIDA BUILDING CODE AND INTERNATIONAL BUILDING CODE AND IS LARGE- AND SMALL-MISSILE IMPACT RESISTANT.



IMPACT-RESISTANT GLAZING DETAILS



DESIGN ENGINEER:  
 SCOTT HAMILTON, P.E.  
 FLORIDA LICENSE No. 63286

DESIGN LOADS: +38.0 P.S.F. & -44.0 P.S.F.

**PRODUCT REVISED**  
 as complying with the Florida Building Code  
 NOA-No. 23-0928.70  
 Expiration Date 02/05/2025  
 By *[Signature]*  
 Miami-Dade Product Control

Unless Stated Otherwise TOLERANCES are

.0	= ±.031
.00	= ±.015
.000	= ±.005
.0000	= ±.001
Degrees	= ±1/2'

Unless Stated Otherwise DIMENSIONS ARE IN INCHES.

**Clopay CORPORATION**  
 8585 Duke Boulevard  
 Mason, OH 45040 USA  
 Tel. No. 513-770-4800  
 Fax No. 513-770-4853

DESCRIPTION: GALLERY 2" EPS SINGLE CAR +38/-44 PSF  
 DRAWN BY: SH DATE: 2/7/13 SCALE: NTS  
 CHECKED BY: -- DATE: -- SHEET 2 OF 4  
 DWG. NO.: 103954

MANUFACTURING PRODUCT CODE DSIE-1F471	WINDLOAD RATING W6 DP38
PART NO.: N/A	VER: MD

MODELS	SHORT	LONG
CLOPAY GALLERY	GD2SP, GR2SP	GD2LP, GR2LP
HOLMES ARTISTRY	AR2SP	AR2LP
IDEAL EXPRESSIONS	ED2SP	ED2LP

MODELS	FLUSH	MINDR RIBS
CLOPAY CLASSIC	4302, HDGC	4305, HDGR
HOLMES CLASSIC	6202	6205
IDEAL CLASSIC	SFC68	SFR68

SHEET: 3 OF 4

REVISIONS					DESCRIPTION
REV. NO.	ZONE:	DATE:	ECN NO.	APPVD:	
10	-	-	-	-	SEE REVISION HISTORY ON SHEET ONE.

27 GA. (0.016" MIN.) STEEL EXTERIOR SKIN WITH G-40 MIN. GALV., BAKED-ON PRIMER AND A BAKED-ON POLYESTER PAINTED TOP COAT. MIN. YIELD 30 KSI.

SILICONE FILLED CHANNEL SEPARATES FRONT AND BACK SKIN OF DOOR.

1.95" THICK, 1# DENSITY EXPANDED POLYSTYRENE FOAM INSULATION LAMINATED TO BOTH EXTERIOR AND INTERIOR SKINS. FOAM INSULATION IS AN APPROVED FOAM PLASTIC (PER FBC 2612.2) AND MEETS REQUIREMENTS OF FBC/IBC 2603.4.1.9.

12 GA. GALV. STEEL TOP ROLLER BRACKET. EACH BRACKET ATTACHED W/(4) #14x5/8" SHEET METAL SCREWS.

14 GA. GALV. STEEL ROLLER HINGE. EACH FASTENED TO END STILES W/(4) #14x5/8" SHEET METAL SCREWS AND (4) 1/4"x3/4" SELF TAPPING SCREWS

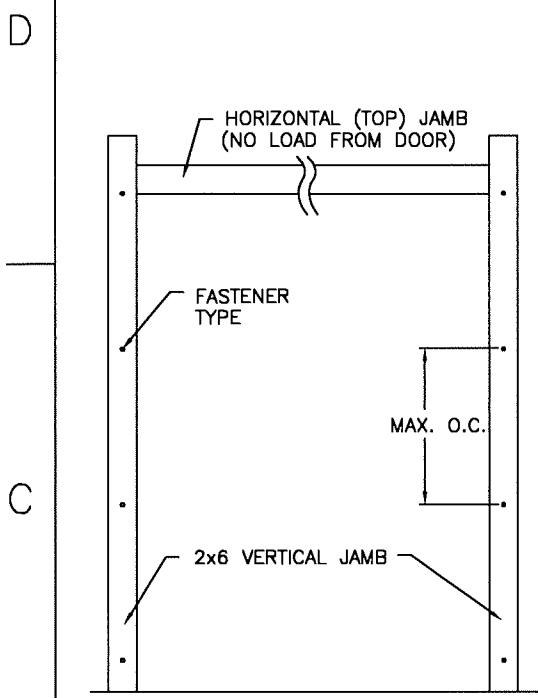
3" TALL x 20 GA. GALV. STEEL U-BAR. ONE AT THE TOP OF EACH DOOR SECTION AND ONE AT THE BOTTOM OF THE BOTTOM SECTION. ATTACHED WITH (2) 1/4"x3/4" SELF TAPPING SCREWS PER HINGE LOCATION.

27 GA. STEEL GALV. INTERIOR SKIN WITH A BAKED-ON PRIMER AND A BAKED-ON POLYESTER PAINTED TOP COAT.

13 GA. GALV. STEEL BOTTOM BRACKET. ATTACHED WITH (4) #14x5/8" SHEET METAL SCREWS.

ALUMINUM EXTRUSION & VINYL WEATHERSTRIP.

SECTION A-A (SIDE VIEW)



JAMB TO SUPPORTING STRUCTURE ATTACHMENT

- NOTES:
1. ALL THE LOAD FROM THE DOOR IS TRANSFERRED TO THE TRACK AND THEN FROM THE TRACK TO THE 2x6 VERTICAL SYP (GRADE #2 OR BETTER) JAMBS. NO LOAD FROM THE DOOR IS TRANSFERRED TO THE HORIZONTAL (TOP) JAMB.
  2. EACH VERTICAL JAMB SEES A MAXIMUM DESIGN LOAD OF +171 LB & -198 LB. PER LINEAR FOOT OF JAMB.
  3. ALL JAMB FASTENERS MAY BE (BUT ARE NOT REQUIRED TO BE) COUNTERSUNK TO PROVIDE A FLUSH MOUNTING SURFACE.
  4. A 1/3 STRESS INCREASE FOR WIND LOAD WAS NOT USED IN THE CALCULATION OF ALLOWABLE LOADS FOR ANCHORS AND FASTENERS FOR STEEL, CONCRETE AND MASONRY.

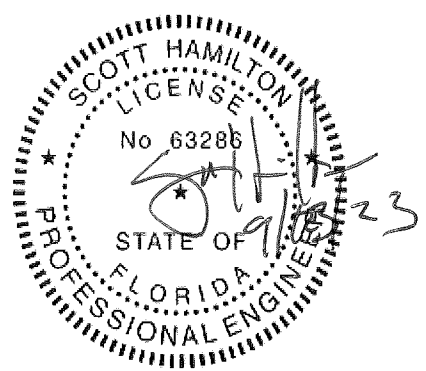
PREPARATION OF JAMBS BY OTHERS

NOTE: THE DESIGN OF THE SUPPORTING STRUCTURAL ELEMENTS SHALL BE THE RESPONSIBILITY OF THE PROFESSIONAL OF RECORD FOR THE BUILDING OR STRUCTURE AND IN ACCORDANCE WITH CURRENT BUILDING CODES FOR THE LOADS LISTED ON THIS DRAWING.

2x6 JAMB TO SUPPORTING STRUCTURE ATTACHMENT (NOT TO BE USED FOR ATTACHMENT OF TRACK ANGLE TO 2x6 VERTICAL JAMBS OR SUPPORTING STRUCTURE)

BUILDING TYPE	FASTENER TYPE	MAXIMUM ON-CENTER DISTANCE BETWEEN FASTENERS*	STEEL WASHERS REQUIRED?
HOLLOW CMU BLOCK WALL	1/4" x 1-1/4" MIN. EMBED ULTRACON CONCRETE ANCHOR	9-3/4"	1" O.D.
GROUT-FILLED CMU BLOCK	1/4" x 1-3/4" MIN. EMBED ULTRACON CONCRETE ANCHOR	16"	1" O.D.
2000 PSI MIN. CONCRETE	1/4" x 1" MIN. EMBED ULTRACON CONCRETE ANCHOR	14"	1" O.D.
2000 PSI MIN. CONCRETE	1/4" x 1" MIN. EMBED TAPCON CONCRETE ANCHOR	13"	1" O.D.
2000 PSI MIN. CONCRETE	3/8" x 1-3/4" MIN. EMBED WEJ-IT ANKR TITE SLEEVE ANCHOR	24"	INCLUDED
4000 PSI MIN. CONCRETE	3/8" x 1-3/4" MIN. EMBED WEJ-IT ANKR TITE SLEEVE ANCHOR	24"	INCLUDED
WOOD FRAME (SYP 0.55 SG)	1/2" x 3" LAG SCREW (ASTM A307, GRADE A) 1-5/8" EMBED INTO STRUCTURE	24"	1" O.D.

\* FIRST (BOTTOM) ANCHOR STARTING AT NO MORE THAN HALF OF THE MAXIMUM ON-CENTER DISTANCE. HIGHEST ANCHOR INSTALLED AT LEAST AS HIGH AS THE DOOR OPENING. CLOPAY DOES NOT SUPPLY JAMB ATTACHMENT FASTENERS. MINIMUM DISTANCE BETWEEN CENTER OF ANCHOR AND EDGE OF CONCRETE BLOCK: 2-1/2", EXCLUDING STUCCO THICKNESS.



DESIGN ENGINEER:  
SCOTT HAMILTON, P.E.  
FLORIDA LICENSE No. 63286

**PRODUCT REVISED**  
as complying with the Florida Building Code  
NOA-No. 23-0928.70  
Expiration Date 02/05/2025  
By *[Signature]*  
Miami-Dade Product Control

Unless Stated Otherwise TOLERANCES are

.0	= ±.031
.00	= ±.015
.000	= ±.005
.0000	= ±.001
Degrees	= ±1/2°

Unless Stated Otherwise DIMENSIONS ARE IN INCHES.

DESIGN LOADS: +38.0 P.S.F. & -44.0 P.S.F.

**Clopay CORPORATION**  
8585 Duke Boulevard  
Mason, OH 45040 USA  
Tel. No. 513-770-4800  
Fax No. 513-770-4853

MANUFACTURING PRODUCT CODE  
DSIE-1F471

PART NO.: N/A

WINDLOAD RATING  
**W6 DP38**

DESCRIPTION: GALLERY 2" EPS SINGLE CAR +38/-44 PSF	SCALE: NTS	DWG. SIZE B
DRAWN BY: SH	DATE: 2/7/13	SHEET 3 OF 4
CHECKED BY: --	DATE: --	VER: MD
DWG. NO.: 103954		

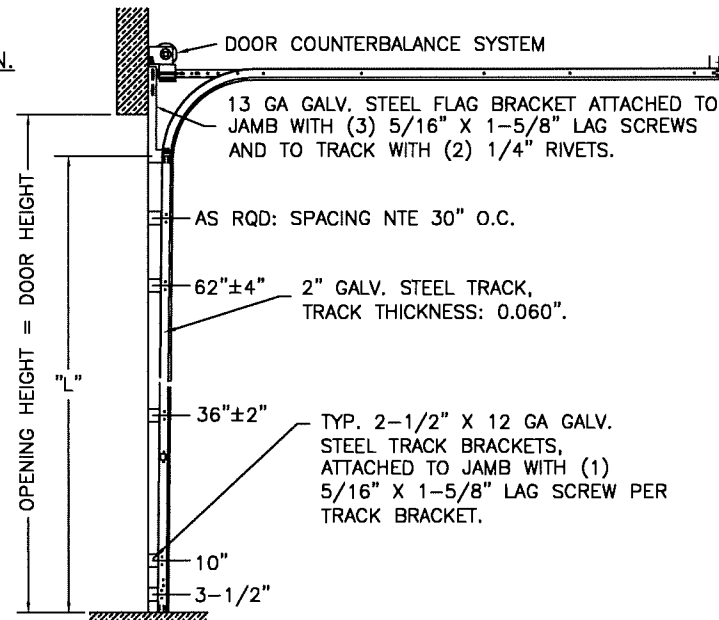
MODELS	SHORT	LONG
CLOPAY GALLERY	GD2SP, GR2SP	GD2LP, GR2LP
HOLMES ARTISTRY	AR2SP	AR2LP
IDEAL EXPRESSIONS	ED2SP	ED2LP

MODELS	FLUSH	MINOR RIBS
CLOPAY CLASSIC	4302, HDGC	4305, HDGR
HOLMES CLASSIC	6202	6205
IDEAL CLASSIC	SFC68	SFR68

SHEET: 4 OF 4

REVISIONS					
REV. NO.	ZONE:	DATE:	ECN NO.	APPVD:	DESCRIPTION
10	-	-	-	-	SEE REVISION HISTORY ON SHEET ONE.

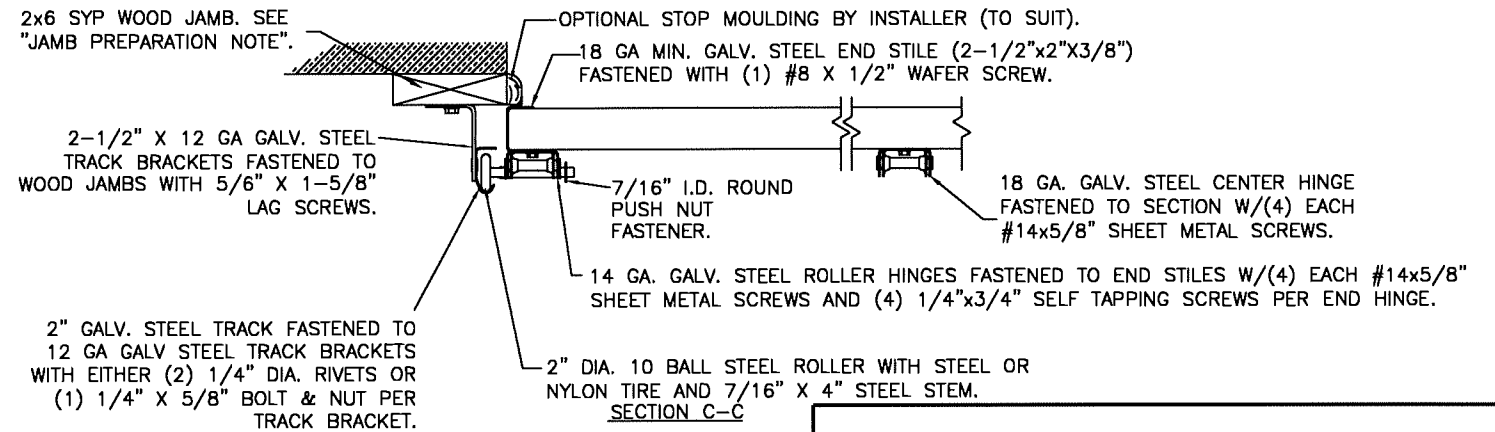
**2" TRACK CONFIGURATION.**



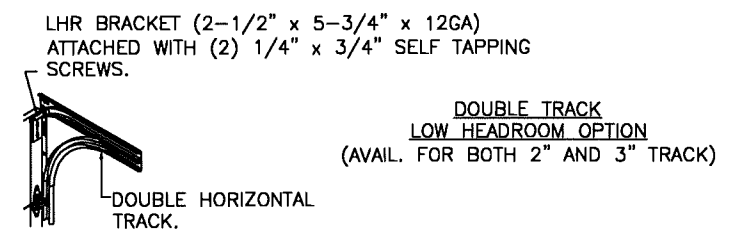
DOOR HEIGHT	"L"
6'-6"	70"
7'-0"	76"
7'-6"	82"
8'-0"	88"
8'-6"	94"
9'-0"	100"
9'-6"	106"
10'-0"	112"
10'-6"	118"
11'-0"	124"
11'-6"	130"
12'-0"	136"
12'-6"	142"
13'-0"	148"
13'-6"	154"
14'-0"	160"
14'-6"	166"
15'-0"	172"
15'-6"	178"
16'-0"	184"

HORIZONTAL TRACK SUPPORT BY DOOR INSTALLER (TO SUIT).

**JAMB CONFIGURATION.**

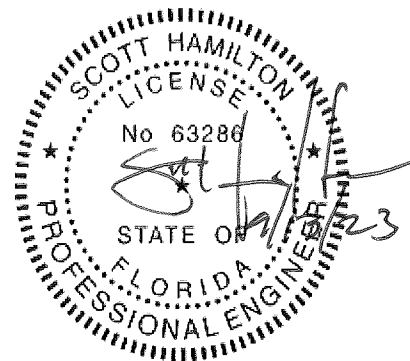


PREPARATION OF JAMBS BY OTHERS.



NOTE: TRACK CONFIGURATION ABOVE THE DOOR OPENING DOES NOT AFFECT THE WIND LOAD RATING OF THIS DOOR.

3" TRACK IS ALSO AVAILABLE.



DESIGN ENGINEER:  
SCOTT HAMILTON, P.E.  
FLORIDA LICENSE No. 63286

DESIGN LOADS: +38.0 P.S.F. & -44.0 P.S.F.

**PRODUCT REVISED**  
as complying with the Florida Building Code  
NOA-No. 23-0928.70  
Expiration Date 02/05/2025  
By *[Signature]*  
Miami-Dade Product Control

Unless Stated Otherwise TOLERANCES are  
.0 = ±.031  
.00 = ±.015  
.000 = ±.005  
.0000 = ±.001  
Degrees = ±1/2'

Unless Stated Otherwise DIMENSIONS ARE IN INCHES.

**Clopay** CORPORATION  
8585 Duke Boulevard  
Mason, OH 45040 USA  
Tel. No. 513-770-4800  
Fax No. 513-770-4853

DESCRIPTION: GALLERY 2" EPS SINGLE CAR +38/-44 PSF

DRAWN BY: SH	DATE: 2/7/13	SCALE: NTS	DWG. SIZE B
CHECKED BY: --	DATE: --	SHEET 4 OF 4	
DWG. NO.: 103954		VER: MD	

MANUFACTURING PRODUCT CODE  
DSIE-1F471

PART NO.: N/A

WINDLOAD RATING  
**W6 DP38**