



DEPARTMENT OF REGULATORY AND ECONOMIC RESOURCES (RER)
BOARD AND CODE ADMINISTRATION DIVISION
NOTICE OF ACCEPTANCE (NOA)

MIAMI-DADE COUNTY
PRODUCT CONTROL SECTION
11805 SW 26 Street, Room 208
Miami, Florida 33175-2474
T (786) 315-2590 F (786) 315-2599
www.miamidade.gov/building

Regency Plus, Inc.
2000 Locust Gap Highway
Mount Carmel, PA 17851

SCOPE:

This NOA is being issued under the applicable rules and regulations governing the use of construction materials. The documentation submitted has been reviewed and accepted by Miami-Dade County RER-Product Control Section to be used in Miami-Dade County and other areas where allowed by the Authority Having Jurisdiction (AHJ).

This NOA shall not be valid after the expiration date stated below. The Miami-Dade County Product Control Section (In Miami-Dade County) and/ or the AHJ (in areas other than Miami-Dade County) reserve the right to have this product or material tested for quality assurance purposes. If this product or material fails to perform in the accepted manner, the manufacturer will incur the expense of such testing and the AHJ may immediately revoke, modify, or suspend the use of such product or material within their jurisdiction. RER reserves the right to revoke this acceptance if it is determined by Miami-Dade County Product Control Section that this product or material fails to meet the requirements of the applicable building code.

This product is approved as described herein and has been designed to comply with the Florida Building Code, including the High Velocity Hurricane Zone.

DESCRIPTION: Series "Tech 5505" White PVC Horizontal Rolling Window (XOX) – L.M.I.

APPROVAL DOCUMENT: Drawing No. **RPLS0078**, titled "Series Tech 5505 Vinyl Horizontal Sliding (XOX) Window - LMI", sheets 1 through 9 of 9, dated 12/05/18, with revision **B** dated 06/08/23, prepared by PTC Product Design Group, LLC, signed and sealed by Robert James Amoruso, P.E., bearing the Miami-Dade County Product Control Revision stamp with the Notice of Acceptance number and expiration date by the Miami-Dade County Product Control Section..

MISSILE IMPACT RATING: Large and Small Missile Impact Resistant

LABELING: Each unit shall bear a permanent label with the manufacturer's name or logo, city, state, series, and following statement: "Miami-Dade County Product Control Approved", unless otherwise noted herein.

RENEWAL of this NOA shall be considered after a renewal application has been filed and there has been no change in the applicable building code negatively affecting the performance of this product.

TERMINATION of this NOA will occur after the expiration date or if there has been a revision or change in the materials, use, and/ or manufacture of the product or process. Misuse of this NOA as an endorsement of any product, for sales, advertising or any other purposes shall automatically terminate this NOA. Failure to comply with any section of this NOA shall be cause for termination and removal of NOA.

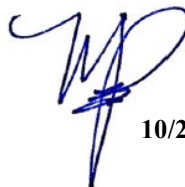
ADVERTISEMENT: The NOA number preceded by the words Miami-Dade County, Florida, and followed by the expiration date may be displayed in advertising literature. If any portion of the NOA is displayed, then it shall be done in its entirety.

INSPECTION: A copy of this entire NOA shall be provided to the user by the manufacturer or its distributors and shall be available for inspection at the job site at the request of the Building Official.

This NOA **revises NOA No. 20-1103.04** and consists of this page 1 and evidence pages E-1, E-2 and E-3, as well as approval document mentioned above.

The submitted documentation was reviewed by **Manuel Perez, P.E.**




10/25/23

NOA No. 23-0929.06
Expiration Date: July 03, 2024
Approval Date: November 02, 2023
Page 1

NOTICE OF ACCEPTANCE: EVIDENCE SUBMITTED

1. EVIDENCE SUBMITTED UNDER PREVIOUS NOA's

A. DRAWINGS

1. Manufacturer's die drawings and sections.
(Submitted under NOA No. 19-0124.04)
2. Drawing No. **RPLS0078**, titled "Series Tech 5505 Vinyl Horizontal Sliding (XOX) Window - LMI", sheets 1 through 9 of 9, dated 12/05/18, with revision **A** dated 10/20/20, prepared by PTC Product Design Group, LLC, signed and sealed by Robert James Amoruso, P.E.
(Submitted under NOA No. 20-1103.04)

B. TESTS

1. Test reports on: 1) Air Infiltration Test, per FBC, TAS 202-94
2) Uniform Static Air Pressure Test, Loading per FBC, TAS 202-94
3) Water Resistance Test, per FBC, TAS 202-94
4) Large Missile Impact Test per FBC, TAS 201-94
5) Cyclic Wind Pressure Loading per FBC, TAS 203-94
6) Forced Entry Test, per FBC 2411.3.2.1, and TAS 202-94
along with marked-up drawings and installation diagram of an extruded white PVC horizontal sliding window, prepared by National Certified Testing Laboratories, Test Report No. **NTCL-110-21458-1**, dated 10/18/18, signed and sealed by Harold E. Rupp, P.E.
(Submitted under NOA No. 19-0124.04)

C. CALCULATIONS

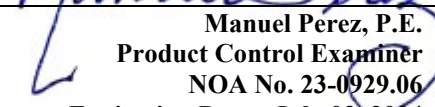
1. Anchor verification calculations and structural analysis, complying with **FBC 6th Edition (2017)**, dated 01/08/19, prepared by PTC Product Design Group, LLC, signed and sealed by Robert James Amoruso, P.E.
(Submitted under NOA No. 19-0124.04)
2. Glazing complies with **ASTM E1300-09**

D. QUALITY ASSURANCE

1. Miami-Dade Department of Regulatory and Economic Resources (RER).

E. MATERIAL CERTIFICATIONS

1. Notice of Acceptance No. **19-0305.02** issued to **Kuraray America, Inc.** for their "**Trosifol® Ultraclear, Clear and Color PVB Glass Interlayers**" dated 05/09/19, expiring on 07/08/24.
2. Notice of Acceptance No. **18-0122.02**, issued to **ENERGI Fenestration Solutions USA, Inc.**, for their **White Rigid PVC Exterior Extrusions for Windows and Doors**, approved on 03/08/18, expiring on 02/28/23.


Manuel Perez, P.E.
Product Control Examiner
NOA No. 23-0929.06
Expiration Date: July 03, 2024
Approval Date: November 02, 2023

Regency Plus, Inc.

NOTICE OF ACCEPTANCE: EVIDENCE SUBMITTED


1. EVIDENCE SUBMITTED UNDER PREVIOUS NOA's (CONTINUED)

F. STATEMENTS

1. Statement letter of conformance, complying with **FBC 7th Edition (2020)**, and of no financial interest, dated 10/20/20, issued by PTC Product Design Group, LLC, signed and sealed by Robert James Amoruso, P.E.
(Submitted under NOA No. 20-1103.04)

G. OTHERS

1. Notice of Acceptance No. **19-1024.04**, issued to Regency Plus, Inc. for their Series "Tech 5505 Vinyl" Horizontal Rolling Window (XOX) – L.M.I., approved on 07/03/19 and expiring on 07/03/24.


Manuel Pérez, P.E.
Product Control Examiner
NOA No. 23-0929.06
Expiration Date: July 03, 2024
Approval Date: November 02, 2023

NOTICE OF ACCEPTANCE: EVIDENCE SUBMITTED

2. NEW EVIDENCE SUBMITTED

A. DRAWINGS

1. Drawing No. **RPLS0078**, titled “Series Tech 5505 Vinyl Horizontal Sliding (XOX) Window - LMI”, sheets 1 through 9 of 9, dated 12/05/18, with revision **B** dated 06/08/23, prepared by PTC Product Design Group, LLC, signed and sealed by Robert James Amoruso, P.E.

B. TESTS

1. None

C. CALCULATIONS

1. None

D. QUALITY ASSURANCE

1. Miami-Dade Department of Regulatory and Economic Resources (RER)

E. MATERIAL CERTIFICATIONS

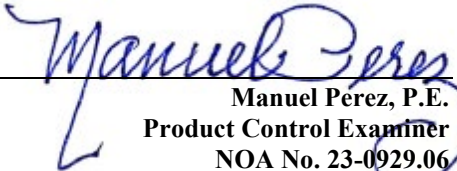
1. Notice of Acceptance No. **20-0915.22** issued to **Kuraray America, Inc.** for their “**Trosifol® Ultraclear, Clear and Color PVB Glass Interlayers**” dated 11/19/20, expiring on 07/08/24.
2. Notice of Acceptance No. **21-1109.04**, issued to **Vision Extrusions Group Limited**, for their **White Rigid PVC Exterior Extrusions for Windows and Doors**, approved on 03/31/22, expiring on 09/30/24.

F. STATEMENTS

1. Statement letter of conformance, complying with **FBC 8th Edition (2023)**, and of no financial interest, dated 06/08/23, issued by PTC Product Design Group, LLC, signed and sealed by Robert James Amoruso, P.E.

G. OTHERS

1. Notice of Acceptance No. **20-1103.04**, issued to Regency Plus, Inc. for their Series “Tech 5505 Vinyl” Horizontal Rolling Window (XOX) – L.M.I., approved on 01/21/21 and expiring on 07/03/24.


Manuel Perez, P.E.
Product Control Examiner
NOA No. 23-0929.06
Expiration Date: July 03, 2024
Approval Date: November 02, 2023

REGENCY PLUS, INC.

SERIES TECH 5505 VINYL HORIZONTAL SLIDING (XOX) WINDOW

LARGE MISSILE IMPACT RESISTANT

INSTALLATION ANCHORAGE DETAILS

NOTES:

1.

THE PRODUCT SHOWN HEREIN IS DESIGNED AND MANUFACTURED TO COMPLY WITH REQUIREMENTS OF THE 8TH EDITION (2023) FLORIDA BUILDING CODE INCLUDING THE HIGH VELOCITY HURRICANE ZONE (HVHZ).
2.

2X WOOD FRAMING, 1X OR 2X WOOD BUCK, METAL FRAMING AND CONCRETE/MASONRY OPENING TO BE DESIGNED AND ANCHORED TO PROPERLY TRANSFER ALL LOADS TO STRUCTURE. FRAMING AND CONCRETE/MASONRY OPENING IS THE RESPONSIBILITY OF THE ARCHITECT OR ENGINEER OF RECORD.
3.

1X BUCK OVER CONCRETE/MASONRY IS OPTIONAL. WHEN 1X BUCK IS USED, INSTALLATION ANCHORS WILL PASS THROUGH WINDOW FRAME AND 1X BUCK INTO CONCRETE/MASONRY SUBSTRATE. WHEN USED, 1X BUCKS SHALL BE DESIGNED AND ANCHORED TO PROPERLY TRANSFER ALL LOADS TO STRUCTURE AND IS THE RESPONSIBILITY OF THE ARCHITECT OR ENGINEER OF RECORD. DISSIMILAR MATERIALS MUST BE SEPARATED WITH APPROVED COATING OR MEMBRANE. SELECTION OF COATING OR MEMBRANE IS THE RESPONSIBILITY OF THE ARCHITECT OR ENGINEER OF RECORD.
4.

THE PRODUCT SHOWN HEREIN HAS BEEN TESTED TO TAS 201, TAS 202 AND TAS 203. SEE TEST REPORT NO. NCTL-110-21458-1, DATED 10/18/18 BY NATIONAL CERTIFIED TESTING LABORATORIES, YORK, PA, SIGNED AND SEALED BY HAROLD E. RUPP, FLORIDA P.E.
5.

MATERIAL:

5.1.

FRAME: EXTRUDED RIGID PVC BY *VISION EXTRUSIONS GROUP LIMITED* PER THE CURRENT MIAMI-DADE NOA.

5.2.

REINFORCEMENT:

5.2.1.

GALVANIZED STEEL BAR (0.72" X 0.355", Fy = 30-50 ksi & Fu = 37.5-68.7 ksi) - ACTIVE STILES

5.2.2.

GALVANIZED STEEL C-CHANNEL (0.73" X 0.434" X 0.060" THICK, Fy = 30-50 ksi & Fu = 37.5-68.7 ksi) - RAILS AND FIXED MEETING STILE.

5.2.3.

GALVANIZED STEEL TUBE (0.935" X 0.73" X 0.060" THICK, Fy = 30-50 ksi & Fu = 37.5-68.7 ksi) - FIXED MEETING STILE

5.3.

LAMINATE GLASS INTERLAYER: TROSIFOL INTERLAYER BY KURARAY AMERICA, INC. PER THE CURRENT MIAMI-DADE NOA.

6.

GLAZING:

6.1.

GLAZING DETAIL AS TESTED:

6.1.1.

OVERALL: 7/8" NOMINAL INSULATING LAMINATED GLASS.

6.1.2.

GLASS THICKNESS: (1) LITE OF 1/8" NOMINAL TEMPERED GLASS TO THE INTERIOR AND (1) LITE OF LAMINATED GLASS TO THE EXTERIOR.

6.1.3.

LAMINATED LITE: (2) LITES OF 1/8" NOMINAL ANNEALED GLASS SEPARATED BY A 0.090" TROSIFOL INTERLAYER BY KURARAY AMERICA, INC.

6.1.4.

SPACER TYPE/SIZE: CARDINAL XL EDGE 7/16" STAINLESS STEEL SPACER (TYPE SS-D).

6.1.5.

GLAZING SYSTEM: INTERIOR GLAZED WITH (2)-LEAF DUAL DUROMETER AND SIKA FLEX "552" BACKBEDDING WITH A SNAP-IN (2)-LEAF DUAL DUROMETER RIGID VINYL GLAZING BEAD.

6.2.

ALL SETTING BLOCKS AND GASKET MATERIALS SHALL BE IN COMPLIANCE WITH THE CURRENT EDITION OF THE FLORIDA BUILDING CODE. SETTING BLOCKS SHALL BE NEOPRENE WITH A 70 TO 90 SHORE A DUROMETER. GASKET MATERIALS SHALL BE EDPM WITH A MINIMUM 60 SHORE A DUROMETER.

6.3.

AS TESTED GLAZING MEETS ASTM E1300-09e FOR THE DESIGN CONDITIONS SHOWN IN THIS PRODUCT APPROVAL DOCUMENT.

7.

APPROVED IMPACT PROTECTIVE SYSTEM IS NOT REQUIRED FOR THIS PRODUCT IN WIND BORNE DEBRIS REGIONS INCLUDING THE HVHZ.

8.

SHIM AS REQUIRED AT EACH INSTALLATION ANCHOR WITH LOAD BEARING SHIM. SHIM WHERE SPACE OF 1/16" OR GREATER OCCURS. MAXIMUM ALLOWABLE SHIM STACK TO BE 1/4".

9.

FOR ANCHORING INTO CONCRETE/MASONRY USE 1/4" HEX HEAD TAPCONS WITH SUFFICIENT LENGTH TO ACHIEVE A 1 1/2" MINIMUM EMBEDMENT INTO CONCRETE WITH 1 1/2" MINIMUM EDGE DISTANCE AND 1" MINIMUM EMBEDMENT INTO MASONRY WITH 2" MINIMUM EDGE DISTANCE. LOCATE ANCHORS AS SHOWN IN ELEVATIONS AND INSTALLATION DETAILS. 4" MINIMUM SPACING BETWEEN ADJACENT ANCHORS REQUIRED. ANCHOR LOCATIONS HAVE +/- 1" TOLERANCE; HOWEVER MINIMUM REQUIREMENTS MUST BE MET.

10.

FOR ANCHORING INTO WOOD FRAMING OR 2X BUCK USE ONE OF THE FOLLOWING:

10.1.

#12 PAN HEAD WOOD SCREWS (WS) WITH SUFFICIENT LENGTH TO ACHIEVE A 1 3/8" MINIMUM EMBEDMENT INTO SUBSTRATE WITH 7/8" MINIMUM EDGE DISTANCE AND MINIMUM ANCHOR-TO-ANCHOR SPACING OF 2" ON CENTER. LOCATE ANCHORS AS SHOWN IN ELEVATIONS AND INSTALLATION DETAILS. ANCHOR LOCATIONS HAVE +/- 1" TOLERANCE; HOWEVER MINIMUM REQUIREMENTS MUST BE MET.

10.2.

#14 PAN HEAD WOOD SCREWS (WS) WITH SUFFICIENT LENGTH TO ACHIEVE A 1 1/2" MINIMUM EMBEDMENT INTO SUBSTRATE WITH 1" MINIMUM EDGE DISTANCE AND MINIMUM ANCHOR-TO-ANCHOR SPACING OF 2" ON CENTER. LOCATE ANCHORS AS SHOWN IN ELEVATIONS AND INSTALLATION DETAILS. ANCHOR LOCATIONS HAVE +/- 1" TOLERANCE; HOWEVER MINIMUM REQUIREMENTS MUST BE MET.

11.

FOR ANCHORING INTO METAL STRUCTURE USE #14 PAN OR HEX HEAD SHEET METAL OR SELF DRILLING SCREWS WITH SUFFICIENT LENGTH TO ACHIEVE 3 THREADS MINIMUM BEYOND STRUCTURE INTERIOR WALL WITH 3/4" MINIMUM EDGE DISTANCE AND MINIMUM ANCHOR-TO-ANCHOR SPACING OF 2" ON CENTER. LOCATE ANCHORS AS SHOWN IN ELEVATIONS AND INSTALLATION DETAILS. ANCHOR LOCATIONS HAVE +/- 1" TOLERANCE.

12.

ALL FASTENERS TO BE CORROSION RESISTANT OR HAVE A CORROSION RESISTANT COATING

13.

INSTALLATION ANCHORS SHALL BE INSTALLED IN ACCORDANCE WITH ANCHOR MANUFACTURER'S INSTALLATION INSTRUCTIONS AND ANCHORS SHALL NOT BE USED IN SUBSTRATES WITH STRENGTHS LESS THAN THE MINIMUM STRENGTH SPECIFIED BELOW:

13.1.

WOOD - MINIMUM SPECIFIC GRAVITY OF (G) 0.42 (NON-HVHZ) AND 0.55 (HVHZ)

13.2.

CONCRETE - MINIMUM COMPRESSIVE STRENGTH OF 2500 PSI

13.3.

MASONRY - STRENGTH CONFORMANCE TO ASTM C-90, MEDIUM WEIGHT WITH DENSITY > 117 PCF

13.4.

METAL STRUCTURE, MINIMUM: STEEL 18GA (0.0428"), Fy = 33KSI / Fu = 45 KSI OR ALUMINUM 6063-T5 0.048" THICK MINIMUM

13.4.1.

STEEL SUBSTRATE TO MEET MINIMUM FBC HVHZ CODE REQUIREMENTS.

14.

APPROVED CONFIGURATIONS: XOX, OX AND XO. OX AND XO INSTALLATION MUST MEET THE FOLLOWING PARAMETERS.

14.1.

FRAME HEIGHT WILL NOT EXCEED THAT OF THE XOX. OPERABLE SASH SIZE WILL NOT EXCEED THAT OF THE XOX. FRAME WIDTH WILL BE LIMITED BY SASH SIZE AND DLO LIMITATIONS.

14.2.

DAYLIGHT OPENING (DLO) WILL BE THE SAME AS OR LESS THAN THAT SHOWN ON SHEET 2.

14.3.

ANCHOR LOCATION AND QUANTITIES USED IN INSTALLATION WILL MEET OR EXCEED THOSE REQUIRED OF THE XOX.

14.4.

WEEP HOLE QUANTITY, LOCATION AND SPACING WILL MEET THOSE OF THE XOX. SPACING CAN BE REDUCED AS NEEDED DUE TO THE LOWER FRAME WIDTH.

TABLE OF CONTENTS	
SHEET	DESCRIPTION
1	NOTES
2	ELEVATION & ANCHOR LOCATION
3	VERTICAL INSTALLATION DETAILS
4	VERTICAL INSTALLATION DETAILS, GLAZING AND INST. NOTES
5	HORIZONTAL INSTALLATION DETAILS
6	CONSTRUCTION DETAILS
7 & 8	BILL OF MATERIALS
9	COMPONENTS

PRODUCT REVISED

As complying with the Florida Building Code

NOA-No. 23-0929.06

Expiration Date: 07/03/2024

By: *Manuel Perez*

Miami-Dade Product Control

PROJECT #422-0617

REGENCY PLUS, INC.
2000 LOCUST GAP HIGHWAY
MT. CARMEL, PA 17851

NOTES
TITLE: SERIES TECH 5505 VINYL HORIZONTAL SLIDING (XOX) WINDOW - LMI
SHEET: 1 OF 9

DATE: 12/5/18
DRAWING NO: RPLS0078
SHEET: 1 OF 9

DATE: 6/8/23
UPDATE TO 8TH EDITION (2023) FBC

DATE: 10/20/20
UPDATE TO 7TH EDITION (2020) FBC

DESCRIPTION

REV

PREPARED BY: *RJA*

SCALE: N.T.S.

REV: B

PTC

Robert J. Amoruso, P.E.
Florida P.E. No. 49752

ROBERT JAMES AMORUSO

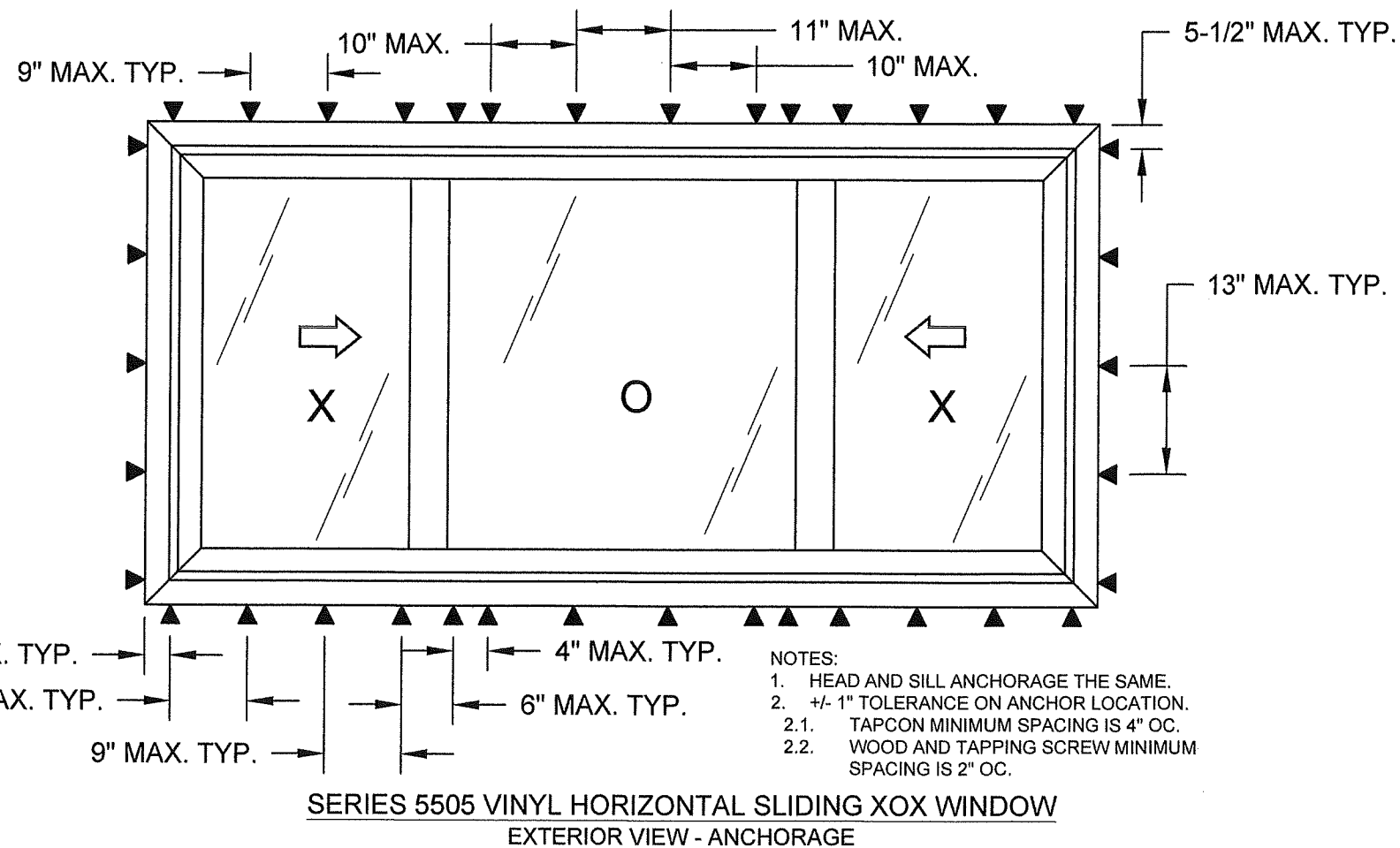
LICENSE

No 49752

STATE OF FLORIDA

PROFESSIONAL ENGINEER

PTC Product Design Group, LLC
PO Box 520775
Longwood, FL 32752-0775
321-690-1788 info@ptc-corp.com
FBPE Certificate of Authorization
No. 25935

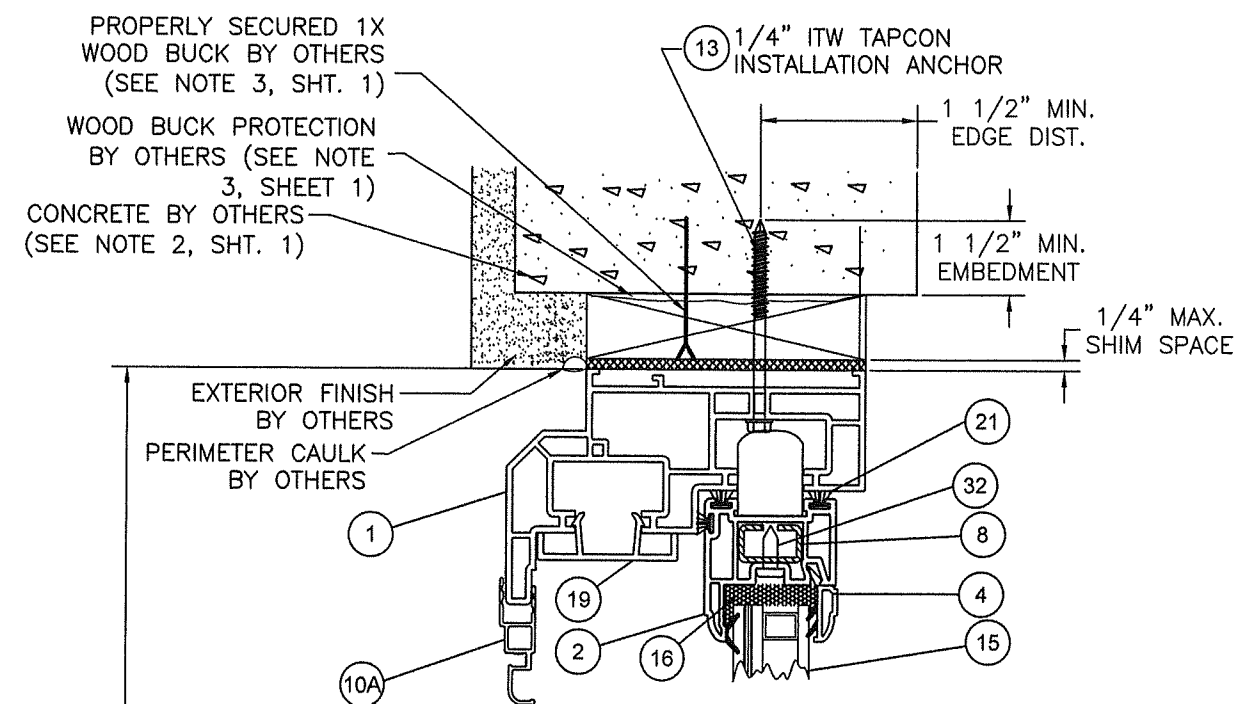


NOTES:

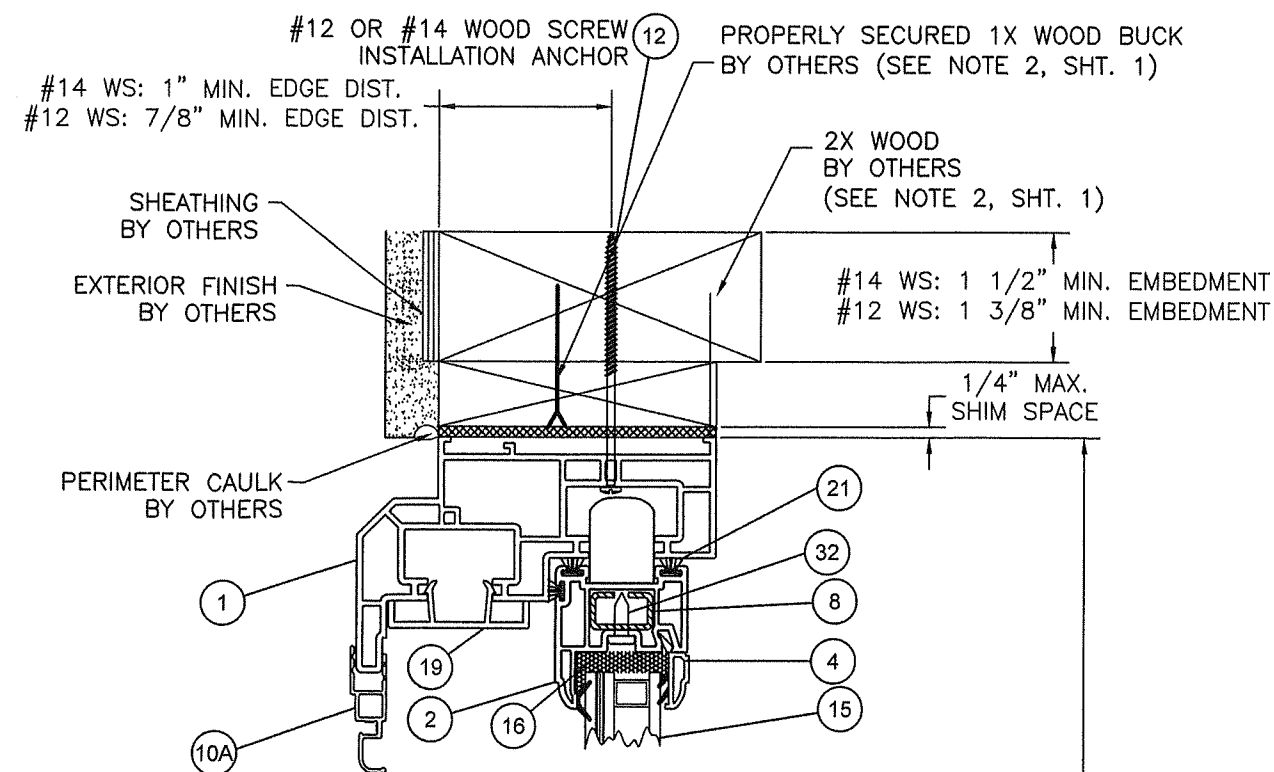
1. MAXIMUM ACTIVE PANEL SIZE: 32" X 59-7/8"
2. DAYLIGHT OPENING (DLO) SIZE:
 - 2.1. ACTIVE.: 28-3/4" X 56-5/8"
 - 2.2. FIXED: 41" X 57-1/2"
3. WEEP HOLE SIZE AND LOCATIONS
 - 3.1. INTERIOR SILL INSERT
 - 3.1.1. SIZE: 0.75" WIDE BY 0.180" HIGH NOTCH
 - 3.1.2. LOCATION: EACH END AND 31.5")FROM EACH END OF THE INTERIOR SILL INSERT
 - 3.2. EXTERIOR SILL TRACK
 - 3.2.1. 0.75" WIDE BY 0.25" HIGH NOTCH
 - 3.2.2. LOCATION: EACH END OF THE EXTERIOR SILL TRACK
 - 3.3. INTERIOR SILL TRACK
 - 3.3.1. SIZE: 0.375" DIAMETER
 - 3.3.2. LOCATION: 16.5" AND 32.5" FROM EACH END AND MIDSPAN OF THE INTERIOR SILL TRACK
 - 3.4. EXTERIOR SILL TRACK
 - 3.4.1. SIZE: 1" WIDE BY 0.25" HIGH
 - 3.4.2. LOCATION: EACH END OF THE EXTERIOR SILL TRACK
 - 3.5. EXTERIOR SILL FACE
 - 3.5.1. SIZE: 1.25" WIDE BY 0.25" HIGH WITH PLASTIC WEEP COVER
 - 3.5.2. LOCATION: 3" FROM EACH END OF THE EXTERIOR SILL FACE
4. SEE GLAZING DETAIL SHEET 4 OF 9.

ROBERT JAMES AMOROSO
 LICENSE
 No 49752
 12/13
 STATE OF
 FLORIDA
 PROFESSIONAL ENGINEER

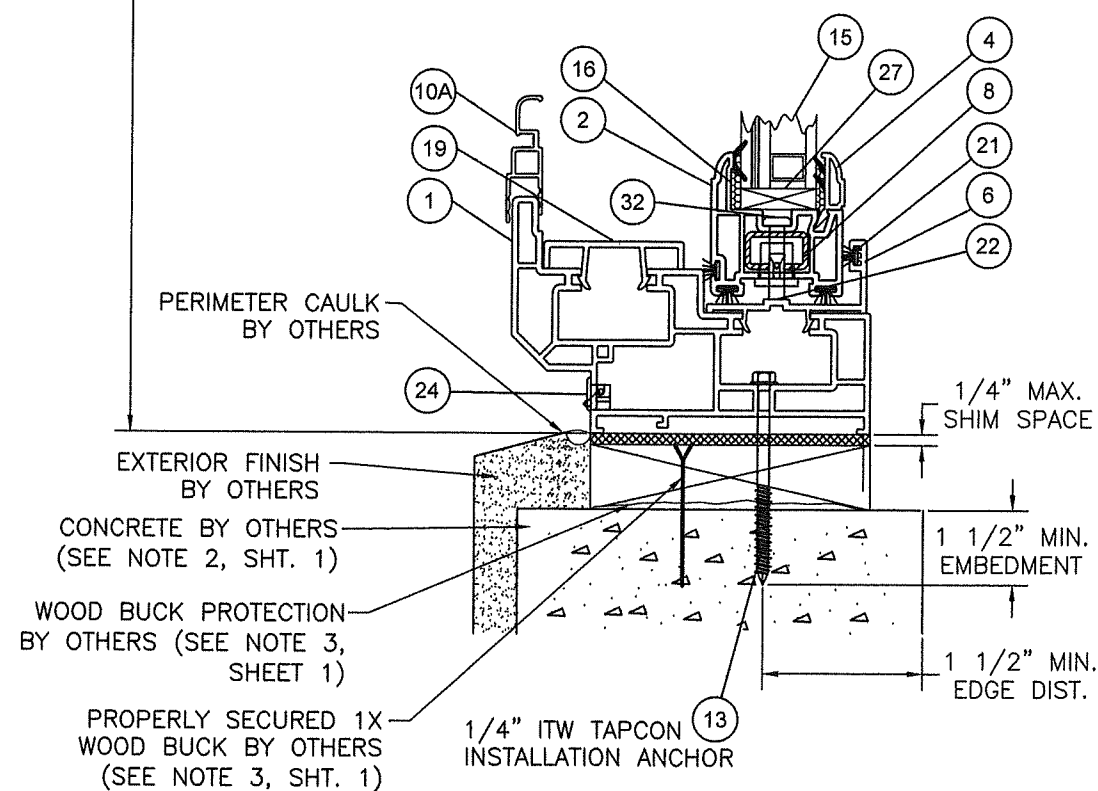
PTC Product Design Group, LLC
PO Box 520775
Longwood, FL 32752-0775
321-690-1788 info@ptc-corp.com
FBPE Certificate of Authorization
No. 25935



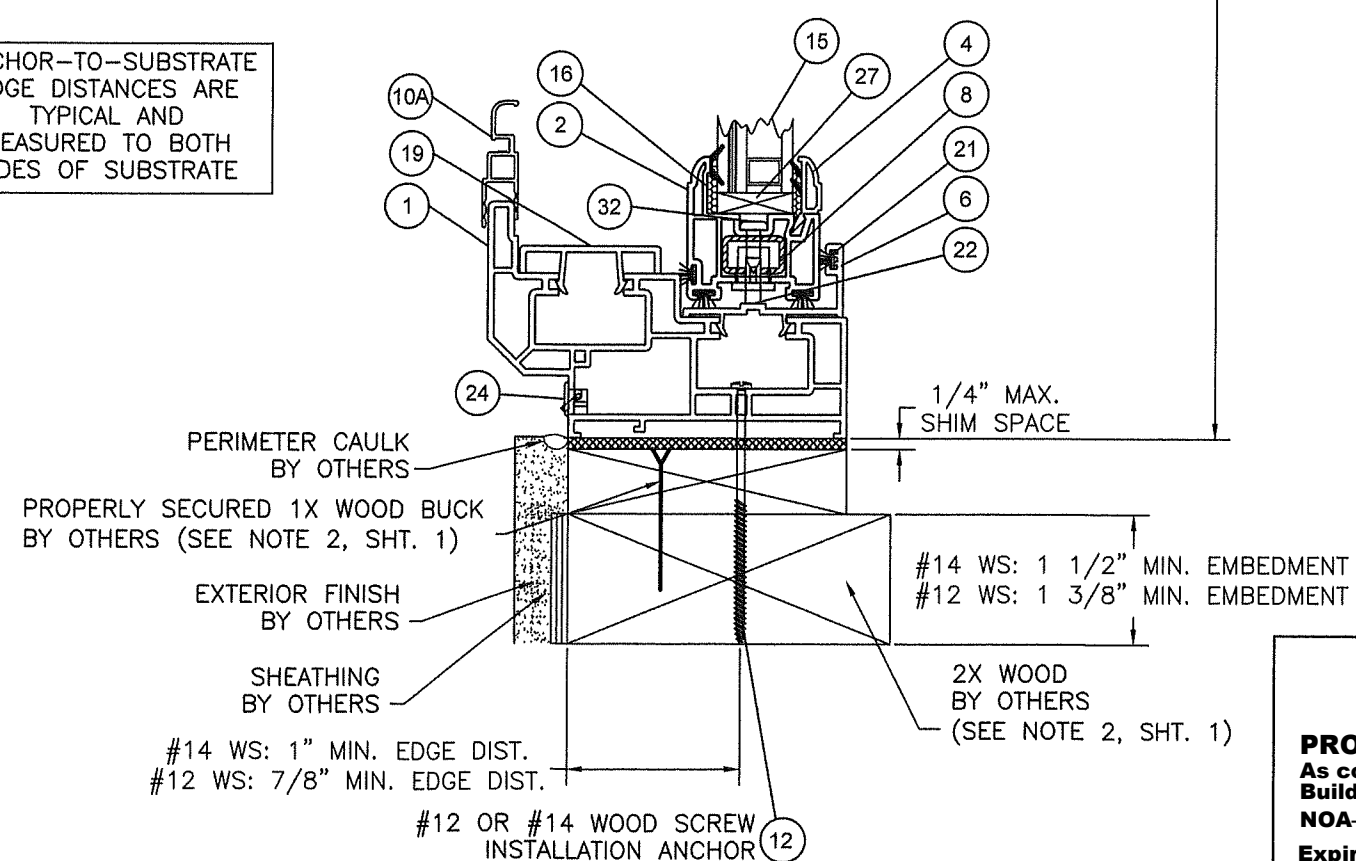
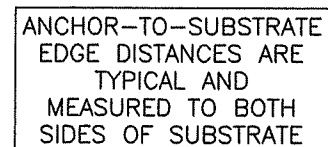
B **VERTICAL SECTION**
CONCRETE SUBSTRATE
OPERABLE PANEL SHOWN,
FIXED SIMILAR



B **VERTICAL SECTION** INTERIOR
WOOD SUBSTRATE
OPERABLE PANEL SHOWN,
FIXED SIMILAR



A **VERTICAL SECTION**
CONCRETE SUBSTRATE
OPERABLE PANEL SHOWN,
FIXED SIMILAR




A **VERTICAL SECTION**
WOOD SUBSTRATE
OPERABLE PANEL SHOWN,
FIXED SIMILAR

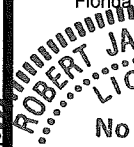
PRODUCT REVISED
As complying with the Florida
Building Code
NOA-No. 23-0929.06
Expiration Date: 07/03/2024

By: Manuel Perez
Miami-Dade Product Control

PROJECT #422-0617				
B	UPDATE TO 8TH EDITION (2023) FBC	6/8/23	RJA	
A	UPDATE TO 7TH EDITION (2020) FBC	10/20/20	RJA	
REV	DESCRIPTION	DATE	BY	

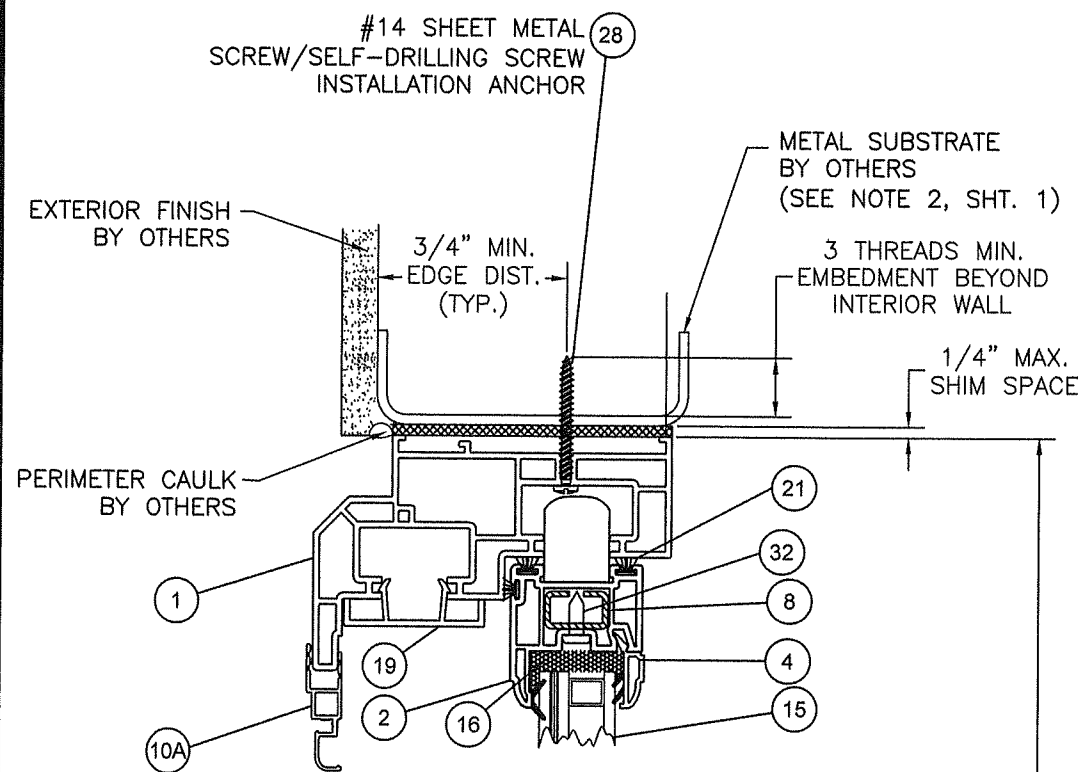
REGENCY PLUS, INC. 2000 LOCUST GAP HIGHWAY MT. CARMEL, PA 17851		TITLE: SERIES TECH 5505 VINYL HORIZONTAL SLIDING (XOX) WINDOW - LMI SHEET NO. _____ TITLE:	
PREPARED BY:		DRAWN BY: RJA	
		DATE: 12/5/18	
SCALE:		DRAWING NO: RPLS0078	
REV:		SHEET: 3 OF 9	

Robert J. Amoruso, P.E.
Florida P.E. No. 49752

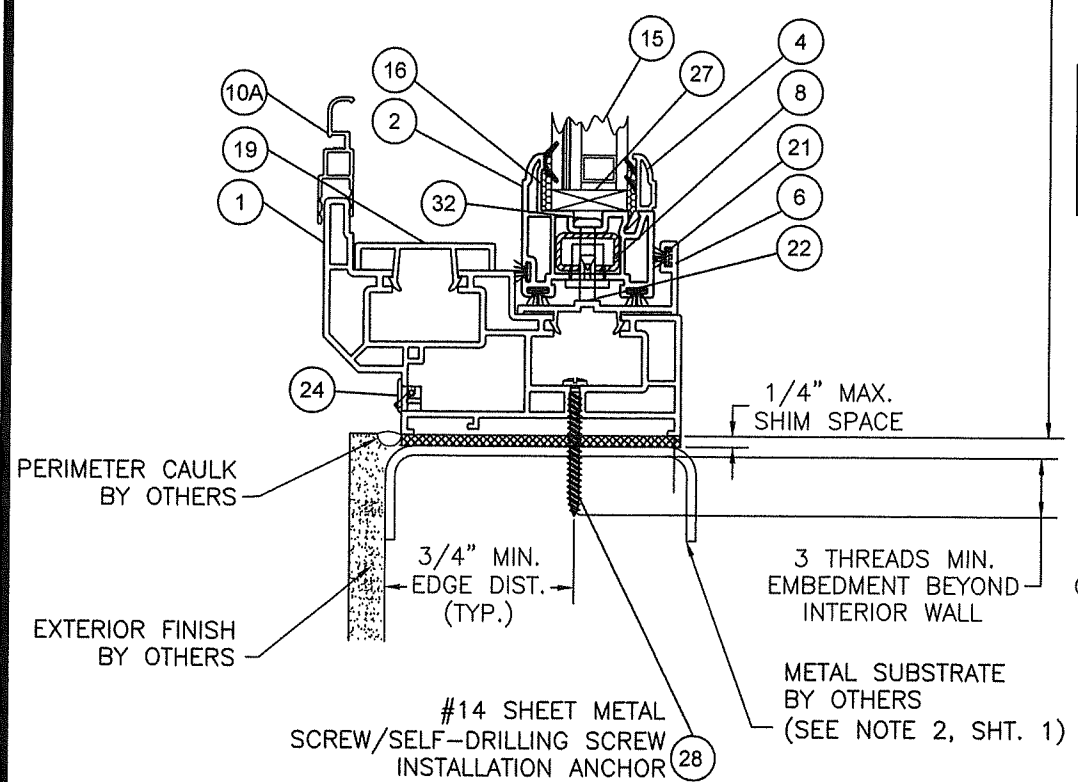


ROBERT J. AMORUSO
LICENSE
No 49752
STATE OF FLORIDA
PROFESSIONAL ENGINEER

PTC Product Design Group, LLC
PO Box 520775
Longwood, FL 32752-0775
321-690-1788 info@ptc-corp.com
FBPE Certificate of Authorization
No. 25935



B VERTICAL SECTION
METAL SUBSTRATE
OPERABLE PANEL SHOWN,
FIXED SIMILAR

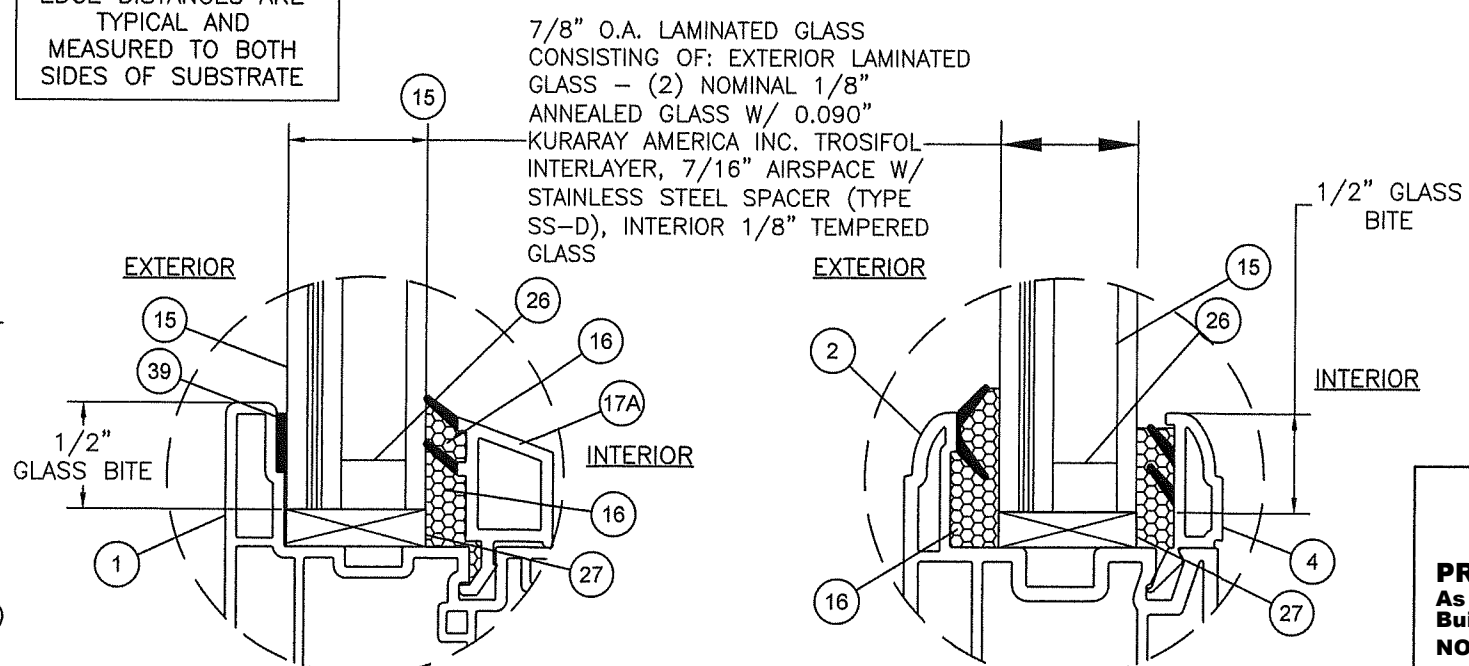


A VERTICAL SECTION
METAL SUBSTRATE
OPERABLE PANEL SHOWN,
FIXED SIMILAR

INSTALLATION NOTES:

- APPROVED INSTALLATION SUBSTRATES INCLUDE THE FOLLOWING:
 - WOOD FRAMING,
 - STEEL STUD FRAMING,
 - ALUMINUM FRAMING, AND
 - CONCRETE AND/OR MASONRY.
- 2X WOOD FRAMING, 1X OR 2X WOOD BUCK, METAL FRAMING AND CONCRETE/MASONRY OPENING TO BE DESIGNED AND ANCHORED TO PROPERLY TRANSFER ALL LOADS TO STRUCTURE. FRAMING AND CONCRETE/MASONRY OPENING IS THE RESPONSIBILITY OF THE ARCHITECT OR ENGINEER OF RECORD.
- 1X BUCK OVER CONCRETE/MASONRY IS OPTIONAL. WHEN 1X BUCK IS USED, INSTALLATION ANCHORS WILL PASS THROUGH WINDOW FRAME AND 1X BUCK INTO CONCRETE/MASONRY SUBSTRATE. WHEN USED, 1X BUCKS SHALL BE DESIGNED AND ANCHORED TO PROPERLY TRANSFER ALL LOADS TO STRUCTURE AND IS THE RESPONSIBILITY OF THE ARCHITECT OR ENGINEER OF RECORD. DISSIMILAR MATERIALS MUST BE SEPARATED WITH APPROVED COATING OR MEMBRANE. SELECTION OF COATING OR MEMBRANE IS THE RESPONSIBILITY OF THE ARCHITECT OR ENGINEER OF RECORD.
- SHIM AS REQUIRED AT EACH INSTALLATION ANCHOR WITH LOAD BEARING SHIM. SHIM WHERE SPACE OF 1/16" OR GREATER OCCURS. MAXIMUM ALLOWABLE SHIM STACK TO BE 1/4".
- FOR ANCHORING INTO CONCRETE/MASONRY USE 1/4" HEX HEAD TAPCONS WITH SUFFICIENT LENGTH TO ACHIEVE A 1 1/2" MINIMUM EMBEDMENT INTO CONCRETE WITH 1 1/2" MINIMUM EDGE DISTANCE AND 1" MINIMUM EMBEDMENT INTO MASONRY WITH 2" MINIMUM EDGE DISTANCE. LOCATE ANCHORS AS SHOWN IN ELEVATIONS AND INSTALLATION DETAILS. 4" MINIMUM SPACING BETWEEN ADJACENT ANCHORS REQUIRED. ANCHOR LOCATIONS HAVE +/- 1" TOLERANCE.
- FOR ANCHORING INTO WOOD FRAMING OR 2X BUCK USE ONE OF THE FOLLOWING:
 - #12 PAN HEAD WOOD SCREWS (WS) WITH SUFFICIENT LENGTH TO ACHIEVE A 1 3/8" MINIMUM EMBEDMENT INTO SUBSTRATE WITH 7/8" MINIMUM EDGE DISTANCE AND MINIMUM ANCHOR-TO-ANCHOR SPACING OF 2" ON CENTER. LOCATE ANCHORS AS SHOWN IN ELEVATIONS AND INSTALLATION DETAILS. ANCHOR LOCATIONS HAVE +/- 1" TOLERANCE.
 - #14 PAN HEAD WOOD SCREWS (WS) WITH SUFFICIENT LENGTH TO ACHIEVE A 1 1/2" MINIMUM EMBEDMENT INTO SUBSTRATE WITH 1" MINIMUM EDGE DISTANCE AND MINIMUM ANCHOR-TO-ANCHOR SPACING OF 2" ON CENTER. LOCATE ANCHORS AS SHOWN IN ELEVATIONS AND INSTALLATION DETAILS. ANCHOR LOCATIONS HAVE +/- 1" TOLERANCE.
- FOR ANCHORING INTO METAL STRUCTURE USE #14 PAN OR HEX HEAD SHEET METAL OR SELF DRILLING SCREWS WITH SUFFICIENT LENGTH TO ACHIEVE 3 THREADS MINIMUM BEYOND STRUCTURE INTERIOR WALL WITH 3/4" MINIMUM EDGE DISTANCE AND MINIMUM ANCHOR-TO-ANCHOR SPACING OF 2" ON CENTER. LOCATE ANCHORS AS SHOWN IN ELEVATIONS AND INSTALLATION DETAILS. ANCHOR LOCATIONS HAVE +/- 1" TOLERANCE.
- INTERIOR AND EXTERIOR FINISHES BY OTHERS. NOT SHOWN FOR CLARITY.
- PERIMETER AND JOINT SEALANT BY OTHERS TO BE DESIGNED AND/OR SPECIFIED IN ACCORDANCE WITH ASTM E2112.

ANCHOR-TO-SUBSTRATE
EDGE DISTANCES ARE
TYPICAL AND
MEASURED TO BOTH
SIDES OF SUBSTRATE



**GLAZING DETAIL 1
FIXED LITE**

**GLAZING DETAIL 2
OPERABLE LITE**

PRODUCT REVISED
As complying with the Florida
Building Code
NOA-No. **23-0929.06**
Expiration Date: **07/03/2024**
By: *Manuel Perez*
Miami-Dade Product Control

PROJECT #422-0617

DATE	BY
6/8/23	RJA
10/20/20	RJA
DESCRIPTION	REV
UPDATE TO 8TH EDITION (2023) FBC	B
UPDATE TO 7TH EDITION (2020) FBC	A

REGENCY PLUS, INC.
2000 LOCUST GAP HIGHWAY
MT. CARMEL, PA 17851

TITLE: SERIES TECH 5505 VINYL HORIZONTAL SLIDING (XOX) WINDOW - LMI
SHEET TITLE: VERTICAL INSTALLATION DETAIL, GLAZING & INST. NOTES

DRAWN BY: RJA

SCALE: N.T.S.

REV: B

DATE: 12/5/18

DRAWING NO: RPLS0078

SHEET: 4 OF 9

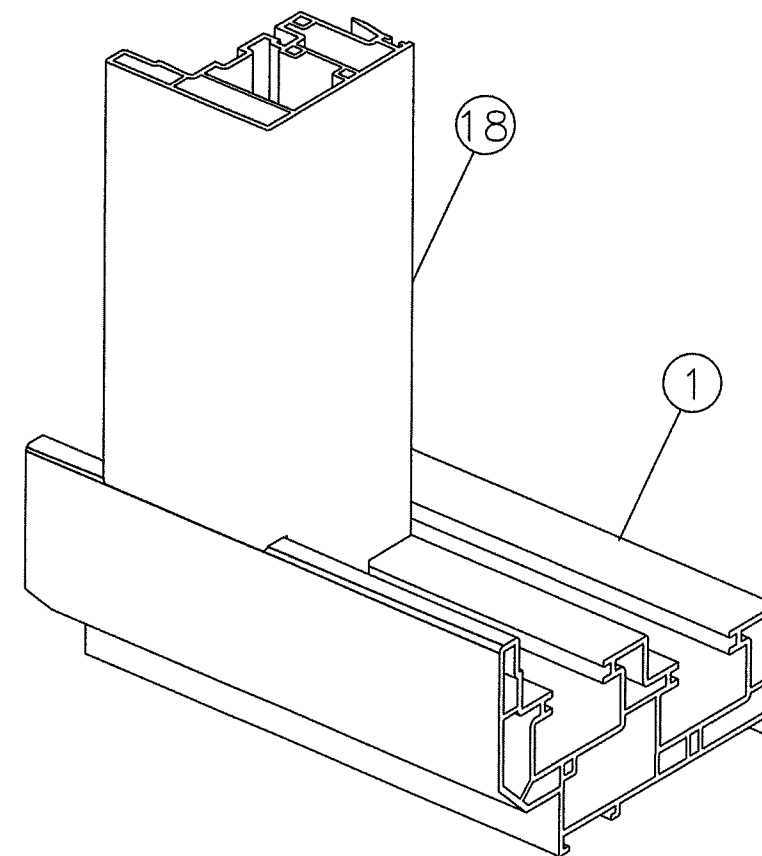
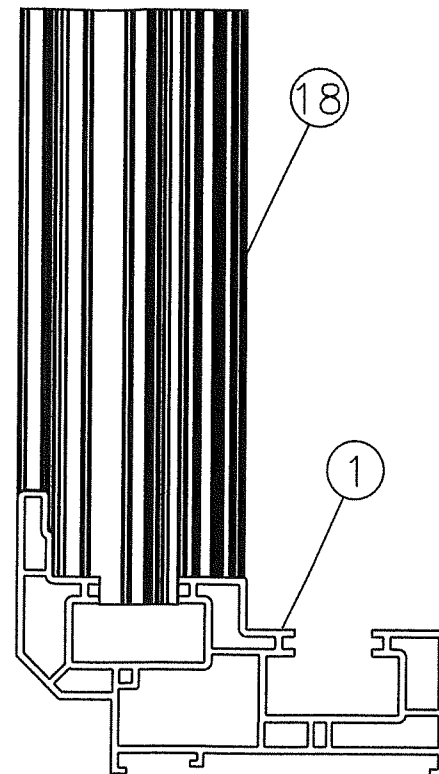
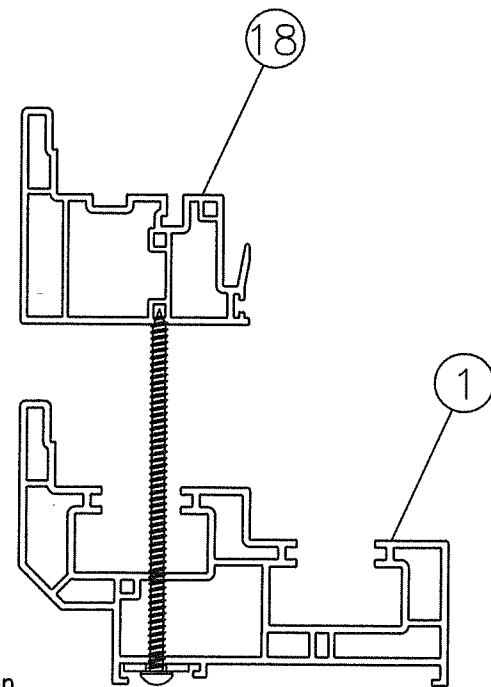
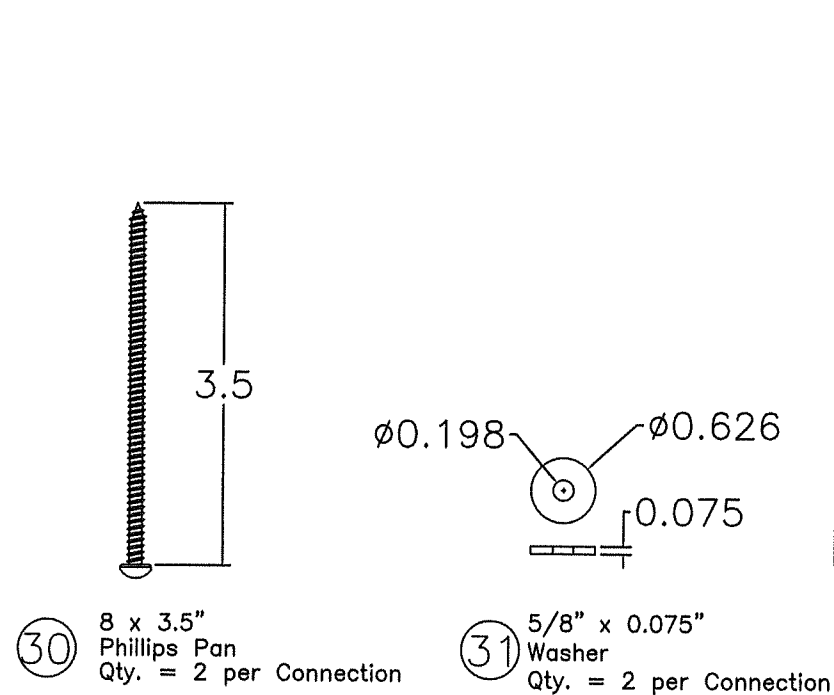
PREPARED BY:

PTC

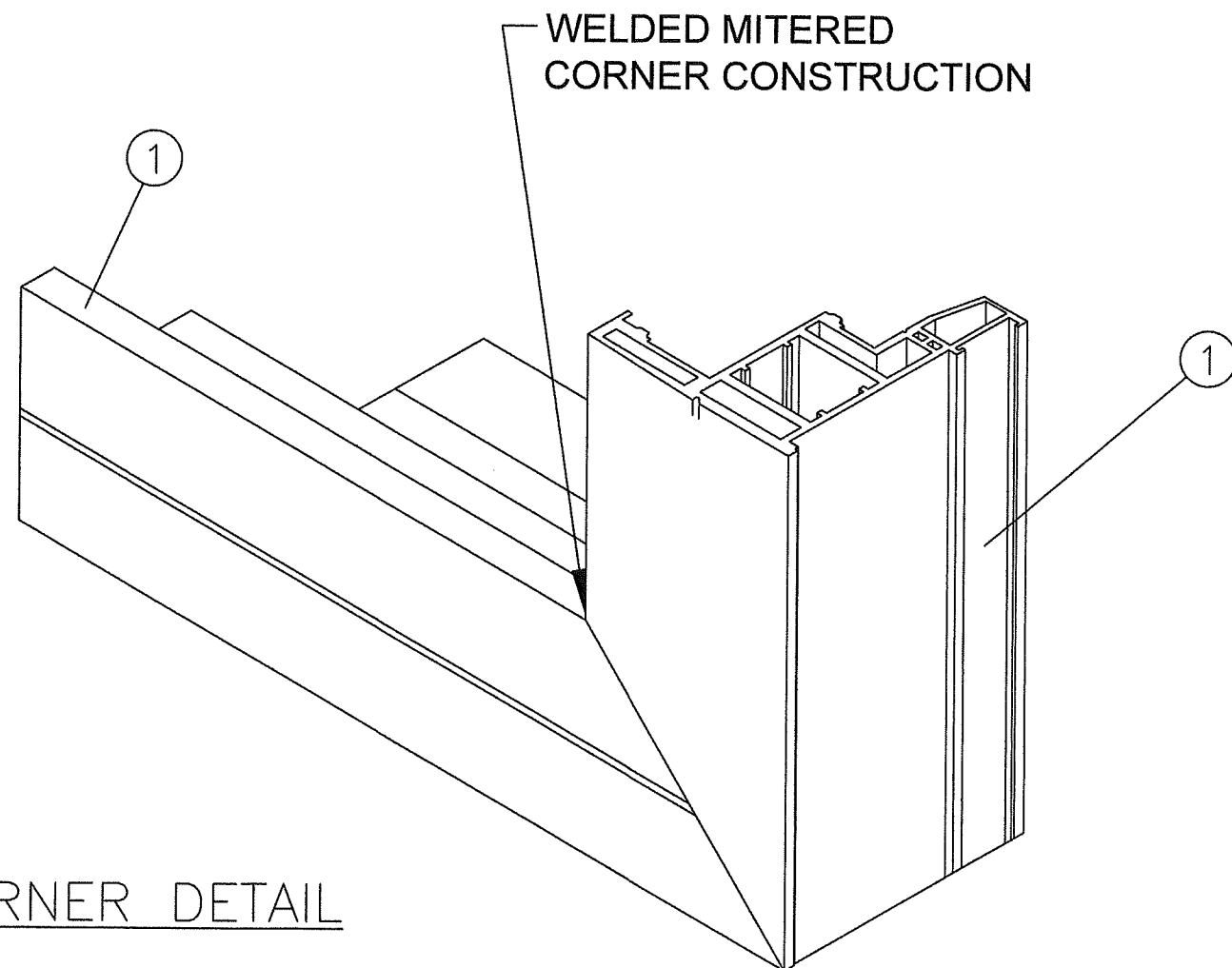
Robert J. Amoroso, P.E.
Florida P.E. No. 49752

ROBERT JAMES AMOROSO
No 49752
STATE OF
FLORIDA
PROFESSIONAL ENGINEER

PTC Product Design Group, LLC
PO Box 520775
Longwood, FL 32752-0775
321-690-1788 info@ptc-corp.com
FBPE Certificate of Authorization
No. 25935



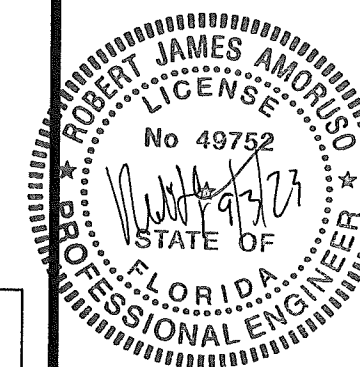
FIXED MEETING RAIL TO FRAME DETAIL



CORNER DETAIL

PRODUCT REVISED
As complying with the Florida Building Code
NOA-No. **23-0929.06**
Expiration Date: **07/03/2024**
By: *Manuel Perez*
Miami-Dade Product Control

Robert J. Amoroso, P.E.
Florida P.E. No. 49752



PTC Product Design Group, LLC
PO Box 520775
Longwood, FL 32752-0775
321-690-1788 info@ptc-corp.com
FBPE Certificate of Authorization
No. 25935

REGENCY PLUS, INC.

2000 LOCUST GAP HIGHWAY

MT. CARMEL, PA 17851

TITLE: SERIES TECH 5505 VINYL HORIZONTAL SLIDING (XOX) WINDOW - LMI

SHEET TITLE: CONSTRUCTION DETAILS

DATE: 12/5/18

DRAWING NO: RPLS00078

SHEET: 6 OF 9

DRAWN BY: RJA

SCALE: N.T.S.

REV: B

PROJECT #422-0617

REV	DESCRIPTION	DATE	BY
B	UPDATE TO 8TH EDITION (2023) FBC	6/8/23	RJA
A	UPDATE TO 7TH EDITION (2020) FBC	10/20/20	RJA

Series Tech 5505 XOX 3-Lite Impact Slider / Bill of Material				
Item No.	Description	Part Numbers	Supplier	Material (Notes)
1	Master Frame (W & H)	IV White 1060 / 7720	Vision Extr. Grp. LTD	White PVC (2)
2	Sash Frame (Operating Sash) / Vents (W & H)	IV White 1282 / 7750	Vision Extr. Grp. LTD	White PVC (2)
3	Glazing Liftrail Handle (Operating Sash) / Vents (H)	IV White 1068 / 7747	Vision Extr. Grp. LTD	White PVC (2)
4	Glazing Bead Stop (Operating Sash) / Vents (H)	IV White 1067 / 7745	Vision Extr. Grp. LTD	White PVC (2)
5	Pocket Cover Heights / Vents (H)	IV White 1073 / 7739	Vision Extr. Grp. LTD	White PVC (2)
6	Pocket Cover Heights / Vents (W)	IV White 1073 / 7724	Vision Extr. Grp. LTD	White PVC (2)
6	Pocket Cover Heights / (W)	IV White 1073 / 7724	Vision Extr. Grp. LTD	White PVC (2)
7	Sash Cover (Operating Sash) / Vents (H)	IV White 1078 / 7725	Vision Extr. Grp. LTD	White PVC (2)
8	Operating Sash (W) Reinforcement	ST-226-144-0.052	Hygrade Metals	.060" Galv. (1)
8	Impost Mullion (H) Reinforcement	ST-226-144-0.052	Hygrade Metals	.060" Galv. (1)
9	Interlock Cover (Operating Sash) / Vents (H)	IV White 1180 / 7727	Vision Extr. Grp. LTD	
10A	Double Leg Frame New White	06515NEW192	Shapes Unlimited	Aluminum
10B	Single Leg Frame New White	06516NEW192	Shapes Unlimited	Aluminum
11	Safe Seal Lock	3220SS-003-EW	Vision Industries	
	Safe Seal Keeper	8292A-003-EW	Vision Industries	
12	#12 or #14 Wood Screw (WS) (Installation Screw)	n/a	n/a	Steel
13	1/4" Advanced Threadform Tapcon (Installation Screw)	n/a	ITW	Steel
14	Operating Sash - Lock Side (H) Reinforcement	615242-120-Solid	Joseph Fazzio Steel	Solid Bar Galv. (1)
15	7/8" O.A. Insulating Glass (See Glazing Detail on Sheet 4)	Hurricane Laminate Impact	Cardinal	
16	Wet Glaze (Operating Sash) / (Fixed Center Section)	552 Sikaflex Black	Sika US	
17A	PW Glazing Bead (Fixed Center Section) (H)	IV White 1080 / 7753	Vision Extr. Grp. LTD	
17B	PW Glazing Bead (Fixed Center Section) (W)	IV White 1103 / 7726	Vision Extr. Grp. LTD	
18	Impost Mullion (Fixed Center Section) (H)	IV White 1063 / 7735	Vision Extr. Grp. LTD	
19	Sash Stop Frame Cover / Vents (W)	IV White 1070 / 7736	Vision Extr. Grp. LTD	
20	Pocket Insert / Center Section PW (W)	IV White 1079 / 7737	Vision Extr. Grp. LTD	
21	.210 x .300 Fin Seal Pocket Cover (W) / 1073 / 7724	W23303NW0000	Ultra-Fab	
	.210 x .300 Fin Seal Pocket Cover (H) / 1073 / 7724	W23303NW0000	Ultra-Fab	
	.210 x .300 Fin Seal Impost Mullion (H) / 1063 / 7735	W23303NW0000	Ultra-Fab	
	.187 x .300 Fin Seal Interlock Cover (H) / 1180 / 7727	W23301NW0000	Ultra-Fab	
	.187 x .300 Fin Seal Interlock Cover (Top / Blocks) / 1180 / 7727	W23301NW0000	Ultra-Fab	
	.187 x .300 Fin Seal Sash Frame (H) / 1282 / 7750 / Energi	W23301NW0000	Ultra-Fab	
	.187 x .300 Fin Seal Sash Frame (W) / 1282 / 7750 / Exterior Top	W23301NW0000	Ultra-Fab	
	.210 x .220 Fin Seal Sash Frame (W) / 1282 / 7750 / Exterior Base	W23223NW0000	Ultra-Fab	
	.270 x .220 Fin Seal Sash Frame (H) / Single Leg Screen Frame	W112257W0000	Ultra-Fab	

PRODUCT REVISED
As complying with the Florida
Building Code
NOA-No. **23-0929.06**
Expiration Date: **07/03/2024**
By: *Manuel Perez*
Miami-Dade Product Control


PROJECT #422-0617

REGENCY PLUS, INC.
2000 LOCUST GAP HIGHWAY
MT. CARMEL, PA 17851

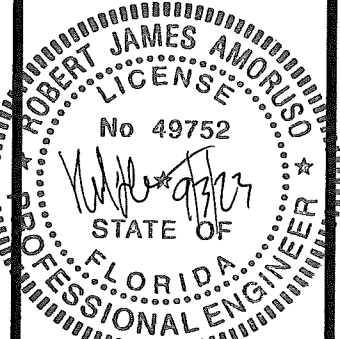
TITLE: SERIES TECH 5505 VINYL HORIZONTAL SLIDING (XOX) WINDOW - LMI
SHEET TITLE: BILL OF MATERIALS

DRAWN BY: RJA
DATE: 12/5/18
SCALE: N.T.S.
REV: B

DRAWING NO: RPLS0078
SHEET: 7 OF 9

PREPARED BY: 

Robert J. Amoruso, P.E.
Florida P.E. No. 49752



PTC Product Design Group, LLC
PO Box 520775
Longwood, FL 32752-0775
321-690-1788 info@ptc-corp.com
FBPE Certificate of Authorization
No. 25935

Series Tech 5505 XOX 3-Lite Impact Slider / Bill of Material (Continued)				
Item No.	Description	Part Numbers	Supplier	Material (Notes)
22	Stainless Steel Ball Bearing Rollers	WR03-R3	Product Design	
23	Hurricane Tilt Latch	1057A-003-EW	Vision Industries	Steel - Zinc Coated (3)
25	Impost Mullion (H) Reinforcement	ST-888-168-0.062	Hygrade Metals	.060" Galv. (1)
26	ENDUR IG with XL Edge SS Spacer (SS-D TYPE)	n/a	Cardinal	Stainless Steel
27	Glass Setting Blocks Sash (W) Top / Sash (H)	2NB-8K-0.125-032-064	Frank Lowe	Neoprene w/70 to 90 Shore A Durometer
	Glass Setting Blocks Fixed (W) Base	2NB-8K-0.125-032-064	Frank Lowe	Neoprene w/70 to 90 Shore A Durometer
	Glass Setting Blocks Sash (W) Base	2NB-8K-0.125-028-028	Frank Lowe	Neoprene w/70 to 90 Shore A Durometer
28	#14 Sheet Metal or Self-Drilling Screw (Installation Screw)	n/a	n/a	Steel
29	# 6 x 1 1/4" Tek White / Impost Mullion Rebar (H) (Item No. 8 Reinforcement)	156180	GLF Corporation	
30	# 8 x 3 1/2" Phil Pan HD SMS Salt Spray / Impost Mullion (H) (2 per Connection)	120913	GLF Corporation	
31	5/8" OD x 0.194 ID X 0.075" THK Washer / Impost Mullion (H) (2 per Connection)	145030	GLF Corporation	
32	# 6 x 5/8" Tek / Impost Mullion Rebar (H) (Item No. 25 Reinforcement)	117595	GLF Corporation	
33	# 6 x 5/8" Tek / Sash Rebar (H) (Item No. 14 Reinforcement)	117595	GLF Corporation	
34	# 6 x 5/8" Tek / Sash Rebar (W) (Item No. 8 Reinforcement)	117595	GLF Corporation	
35	# 5 x 3/8" Tek / Screen Clips White	116506	GLF Corporation	
36	# 8-18 x 0.850 Flat Wafer Shoulder / Sash / Hurricane Latch	137341	GLF Corporation	
37	# 8 x 1 1/4" Tek White / Locks	120376	GLF Corporation	
38	# 6 x 1" Tek White / Keepers	116821	GLF Corporation	
39	Black Glazing Tape 1/8 x 3/8 x 85' (Fixed Center Section)	VEN-VG-1208B	Industrial Sales	
Misc. Screen Components - Not Shown in Drawing				
SCN	Screen Clip Clear	H-884	Product Design	
SCN	Screen Clip Clear	H-3150	Product Design	
SCN	Tension Springs	2584	Adept	
SCN	Fiberglass Screen Cloth Charcoal / 28" x 600'	3002606	PhiFer	Fiberglass
SCN	Screen Spline (H / W)	EX-FLX-Q165-BK	Imperial Plastic USA	
SCN	Aluminum Corner Keys	CK252X260	Hygrade Metals	
Misc. Components - Not Shown in Drawing				
MISC	Weep Hole Cover White	H-808WHZ	Product Design	
MISC	Interlock Cover (Operating Sash) / Vents (H)	HH-66 Vinyl Cement	RH Products	
MISC	Liftrail End Caps White	00156-C001	S.I.L. Plastic	
MISC	Stainless Steel Staples 3/8 x 1/2 Sash (W)	BEA 80/10	Smith Staple	
MISC	30PP12-18P50-9/16 X1 3/8 X 3 Foam Block	W0511022	Lindenmeyr	
MISC	Hurricane Grade Spring	CS025	James Spring Wire	
MISC	Accessory Parts Installation Translucent	02-MX0150010C2	Novagard Silicones	
(W) - Width; (H) - Height; Defines Component Location				

Notes:

- (1) Hygrade Metals Specification: AISI 1005 to 1010, CS Type A and B, 30 ksi to 50 ksi Yield Strength, G40 Galvanized
- (2) VISION EXTRUSIONS GROUP LIMITED PER THE CURRENT MD NOA.
- (3) HURRICANE TILT LATCH BY VISION IND. USED TO SECURE OPERATING SASH TO MASTER FRAME. NOT SHOWN IN DRAWING.

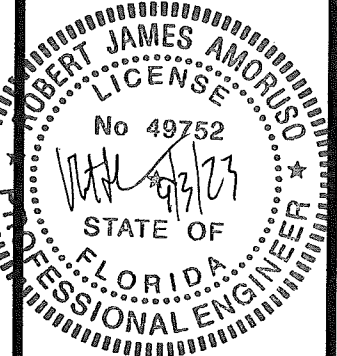
PRODUCT REVISED
As complying with the Florida
Building Code
NOA-No. **23-0929.06**
Expiration Date: **07/03/2024**
By: *Manuel Perez*
Miami-Dade Product Control

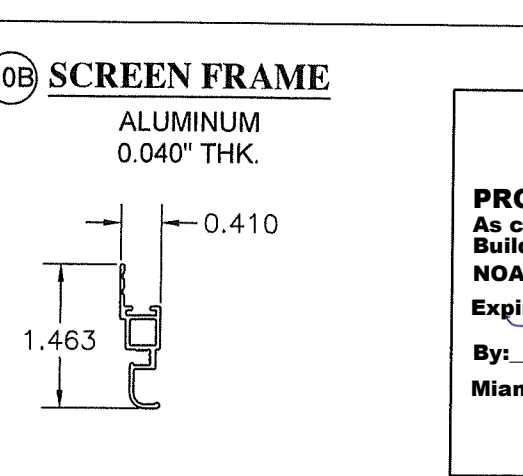
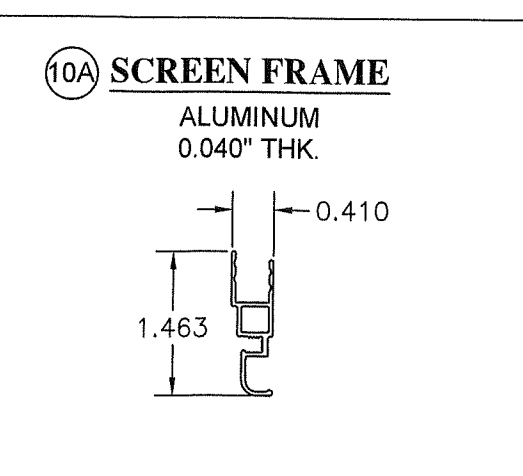
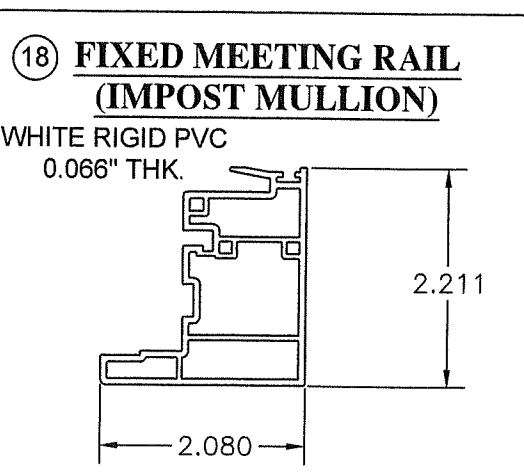
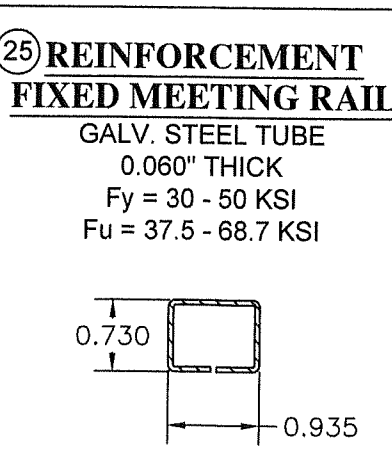
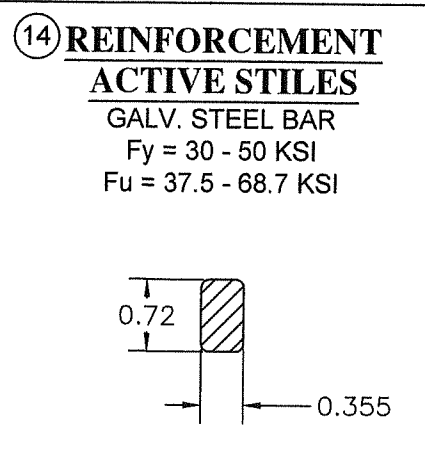
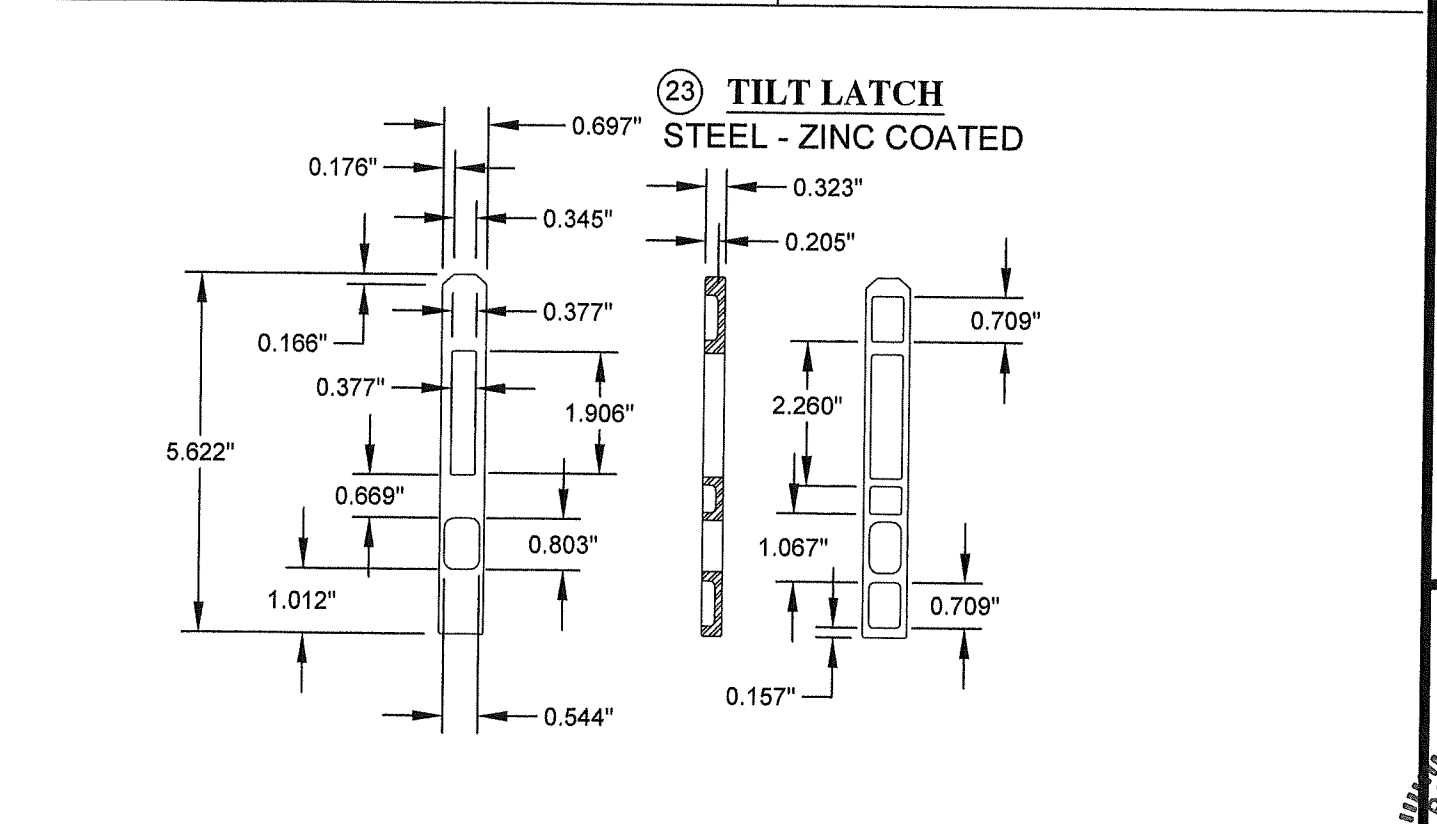
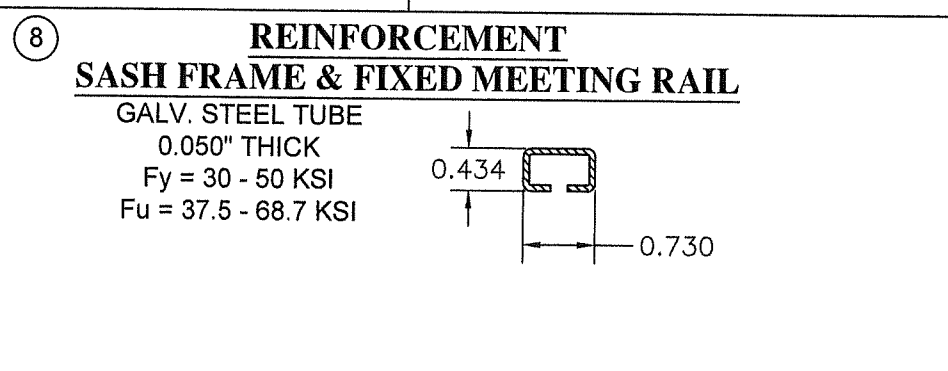
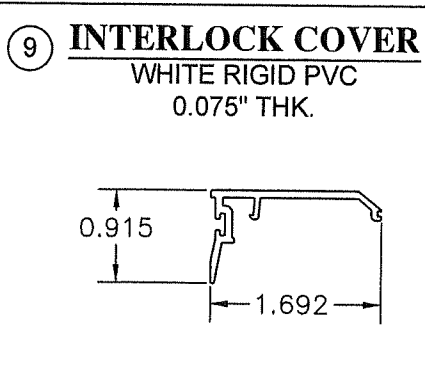
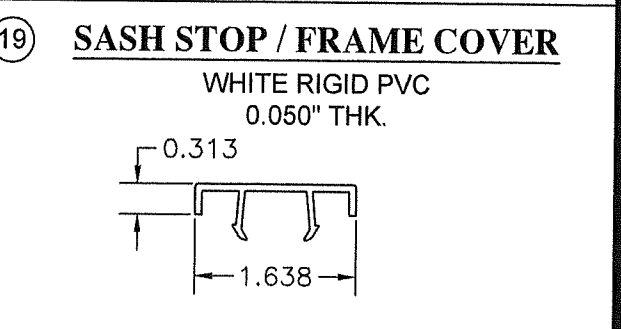
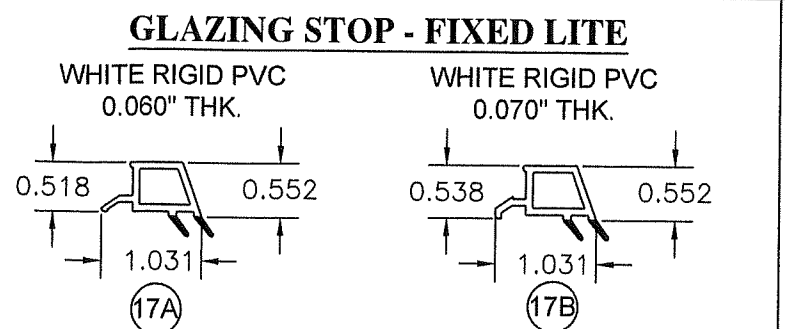
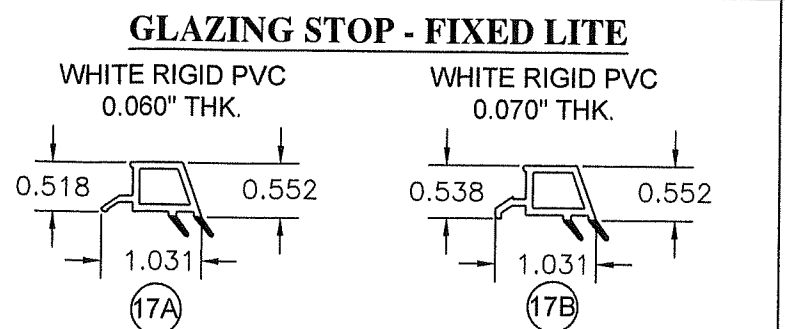
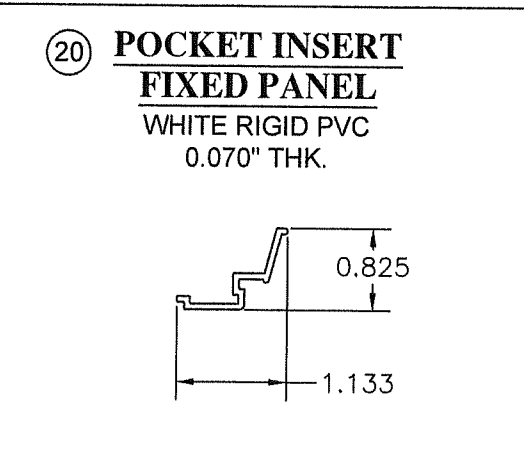
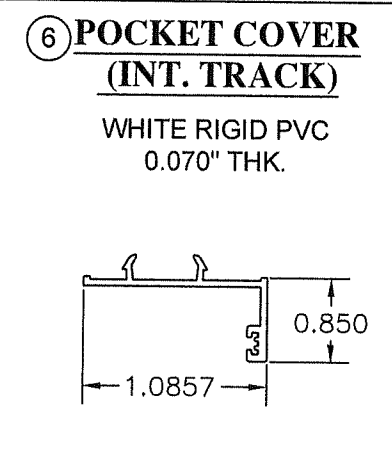
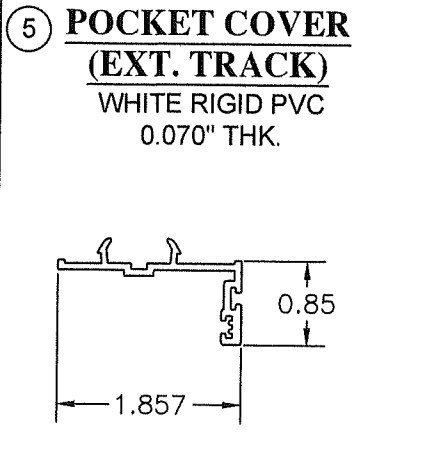
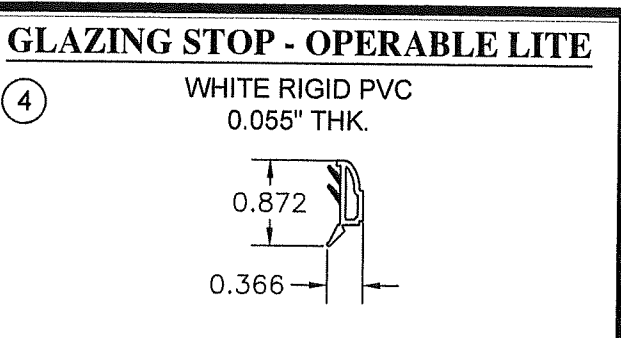
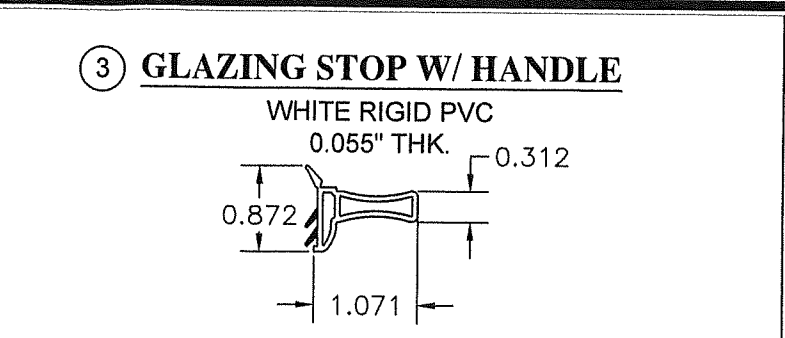
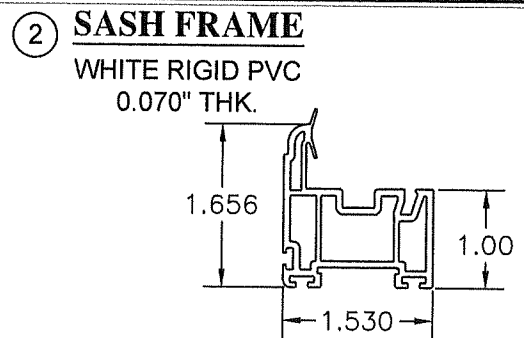
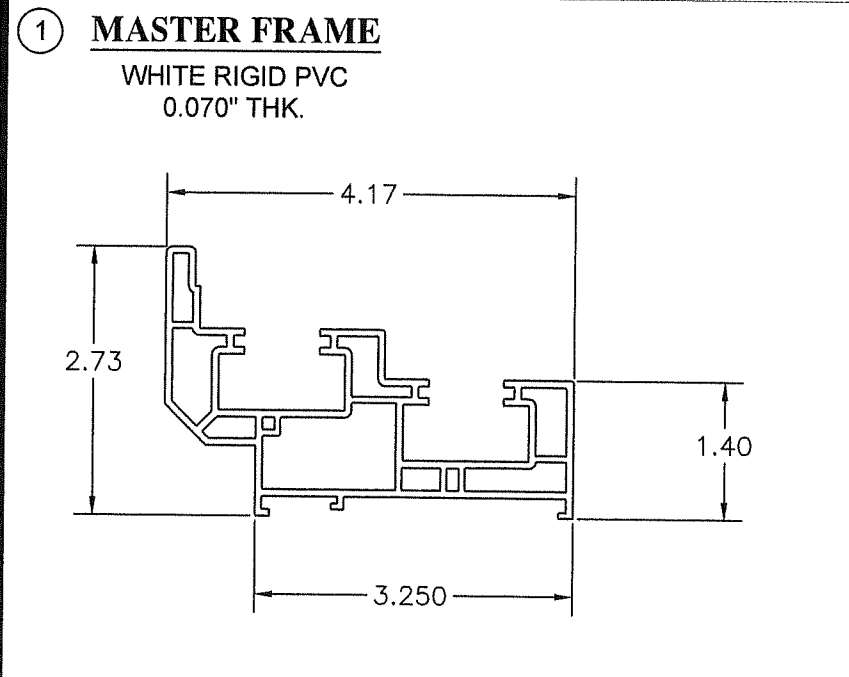
PTC Product Design Group, LLC
PO Box 520775
Longwood, FL 32752-0775
321-690-1788 info@ptc-corp.com
FBPE Certificate of Authorization
No. 25935

PROJECT #422-0617		RJA	BY
		6/8/23	DATE
	UPDATE TO 8TH EDITION (2023) FBC	10/20/20	DESCRIPTION
	UPDATE TO 7TH EDITION (2020) FBC		REV

REGENCY PLUS, INC. 2000 LOCUST GAP HIGHWAY MT. CARMEL, PA 17851	BILL OF MATERIALS	DATE: 12/5/18	DRAWING NO: RPLS0078	SHEET: 8 OF 9
		DRAWN BY: RJA	SCALE: N.T.S.	REV: B
		PREPARED BY:		

Robert J. Amoruso, P.E.
Florida P.E. No. 49752





PRODUCT REVISED
As complying with the Florida Building Code
NOA-No. **23-0929.06**
Expiration Date: **07/03/2024**
By: *Manuel Perez*
Miami-Dade Product Control

PROJECT #422-0617

REV	DESCRIPTION	DATE	BY
B	UPDATE TO 8TH EDITION (2023) FBC	6/8/23	RJA
A	UPDATE TO 7TH EDITION (2020) FBC	10/20/20	RJA

REGENCY PLUS, INC.
2000 LOCUST GAP HIGHWAY
MT. CARMEL, PA 17851

TITLE: SERIES TECH 5505 VINYL HORIZONTAL SLIDING (XOX) WINDOW - LMI COMPONENTS

DATE: 12/5/18
DRAWING NO: RPLS0078
SHEET: 9 OF 9

PREPARED BY: *Manuel Perez*

Robert J. Amoroso, P.E.
Florida P.E. No. 49752

STATE OF FLORIDA
PROFESSIONAL ENGINEER
No 49752

PTC Product Design Group, LLC
PO Box 520775
Longwood, FL 32752-0775
321-690-1788 info@ptc-corp.com
FBPE Certificate of Authorization
No. 25935