



MIAMI-DADE COUNTY  
PRODUCT CONTROL SECTION

DEPARTMENT OF REGULATORY AND ECONOMIC RESOURCES (RER)  
BOARD AND CODE ADMINISTRATION DIVISION

11805 SW 26 Street, Room 208  
Miami, Florida 33175-2474  
T (786) 315-2590 F (786) 315-2599

**NOTICE OF ACCEPTANCE (NOA)**

[www.miamidade.gov/economy](http://www.miamidade.gov/economy)

**Overhead Door Corporation**  
**2501 South State Highway 121, Suite 200**  
**Lewisville, TX 75067**

**SCOPE:**

This NOA is being issued under the applicable rules and regulations governing the use of construction materials. The documentation submitted has been reviewed and accepted by Miami-Dade County RER-Product Control Section to be used in Miami-Dade County and other areas where allowed by the Authority Having Jurisdiction (AHJ).

This NOA shall not be valid after the expiration date stated below. The Miami-Dade County Product Control Section (In Miami-Dade County) and/ or the AHJ (in areas other than Miami-Dade County) reserve the right to have this product or material tested for quality assurance purposes. If this product or material fails to perform in the accepted manner, the manufacturer will incur the expense of such testing and the AHJ may immediately revoke, modify, or suspend the use of such product or material within their jurisdiction. RER reserves the right to revoke this acceptance if it is determined by Miami-Dade County Product Control Section that this product or material fails to meet the requirements of the applicable building code.

This product is approved as described herein and has been designed to comply with the Florida Building Code, including the High Velocity Hurricane Zone.

**DESCRIPTION: Models 421/423/427/429 Steel Sectional Garage Door up to 14ft.-2in. Wide with Optional EPS Insulation and Impact Resistant Glazing**

**APPROVAL DOCUMENT:** Drawing No. **411500**, titled "Windload Commercial Sectional Steel Door, 421/423/427/429, +50/-56PSF Dade County, 14'2" Max. Width", sheets 1 through 4 of 4, dated 04/04/2018, with revision **P00** dated 07/16/2018, prepared by Overhead Door Corporation, signed and sealed by Dwayne J. Kornish, P.E., bearing the Miami-Dade County Product Control Revision stamp with the NOA number and Expiration date by the Miami-Dade County Product Control Section.

**MISSILE IMPACT RATING: Large & Small Missile Impact Resistant**

**LABELING:** A permanent label with the manufacturer's name or logo, manufacturing address, model/ series number, the positive and negative design pressure rating, indicate impact rated if applicable, installation instruction drawing reference number, approval number (NOA), the applicable test standards, and the statement reading 'Miami-Dade County Product Control Approved' is to be located on the door's sidetrack, bottom angle, or inner surface of a panel.

**RENEWAL** of this NOA shall be considered after a renewal application has been filed and there has been no change in the applicable building code negatively affecting the performance of this product.

**TERMINATION** of this NOA will occur after the expiration date or if there has been a revision or change in the materials, use, and/ or manufacture of the product or process. Misuse of this NOA as an endorsement of any product, for sales, advertising or any other purposes shall automatically terminate this NOA. Failure to comply with any section of this NOA shall be cause for termination and removal of NOA.

**ADVERTISEMENT:** The NOA number preceded by the words Miami-Dade County, Florida, and followed by the expiration date may be displayed in advertising literature. If any portion of the NOA is displayed, then it shall be done in its entirety.

**INSPECTION:** A copy of this entire NOA shall be provided to the user by the manufacturer or its distributors and shall be available for inspection at the job site at the request of the Building Official.

This NOA **renews and revises NOA # 20-1106.08** and consists of this page 1, evidence pages E-1 and E-2, as well as approval document mentioned above.

The submitted documentation was reviewed by **Carlos M. Utrera, P.E.**



**NOA-No: 23-1013.05**  
**Expiration Date: November 01, 2028**  
**Approval Date: November 22, 2023**  
**Page 1**

**Overhead Door Corporation**

**NOTICE OF ACCEPTANCE: EVIDENCE SUBMITTED**

**1. EVIDENCE SUBMITTED UNDER PREVIOUS NOA-No. 17-1207.09**

**A. DRAWINGS**

1. Drawing No. **411500**, titled “Windload Commercial Sectional Steel Door, 421/423/427/429, +50/-56PSF Dade County, 14’2” Max. Width”, sheets 1 through 4 of 4, dated 04/04/2018, with revision **P00** dated 07/16/2018, prepared by Overhead Door Corporation, signed and sealed by Dwayne J. Kornish, P.E.

**B. TESTS**

1. Test reports on 1) Uniform Static Air Pressure Test, Loading per FBC TAS 202-94  
2) Large Missile Impact Test per FBC, TAS 201-94  
3) Cyclic Wind Pressure Loading per FBC, TAS 203-94  
4) Forced Entry Test, per FBC, TAS 202-94  
5) Tensile Test per ASTM E8  
along with marked-up drawings of a 14’-2” Wide Models 421/423/427/429 Steel Sectional Doors, prepared by Intertek, Test Report No. **G6343.04-801-18-R1**, dated 05/14/2018, with revision dated 07/28/2018, signed and sealed by Tyler Westerling, P.E.
2. Test report on salt spray exposure, per ASTM B117-16 on G40 and G90 coupons, prepared by Intertek, Report No. **I1314.02-106-18R0**, dated 05/11/2018, signed by Gary T. Hartman.

**C. CALCULATIONS**

1. Anchorage verification calculations prepared by Overhead Door Engineering, dated 07/13/2018, signed and sealed by Dwayne J. Kornish, P.E.

**D. MATERIAL CERTIFICATIONS**

1. Test report on the EPS Insulation, D.F. Self-Ignition Temperature per ASTM D1929-2016, Test Report # **103445527MID-002**, prepared by Intertek, dated 03/23/2017, signed by Bryan Bowman.
2. UL evaluation report on Styropek EPS insulations’ Surface Burning Characteristics (Flame Spread and Smoke Density Index) per ANSI/UL723 (ASTM E84), prepared by UL Inc., Test Report # **UL ER38219-01** and dated 04/08/2015.
3. Notice of Acceptance No. **17-0410.01**, issued to Covestro, LLC, for their Makrolon Polycarbonate Sheets, approved on 06/08/2017 and expiring on 08/27/2022.

**E. QUALITY ASSURANCE**

1. Miami-Dade Department of Regulatory and Economic Resources (RER).

**F. STATEMENTS**

1. Statement letter of code conformance to the 6<sup>th</sup> edition (2017) FBC issued by Overhead Door Corporation, dated 09/12/2018, signed and sealed by Dwayne J. Kornish, P.E.
2. No financial interest letter issued by Overhead Door Corporation, dated 09/12/2018, signed and sealed by Dwayne J. Kornish, P.E.



**Carlos M. Utrera, P.E.**  
**Product Control Examiner**  
**NOA-No: 23-1013.05**

**Expiration Date: November 01, 2028**  
**Approval Date: November 22, 2023**

**Overhead Door Corporation**

**NOTICE OF ACCEPTANCE: EVIDENCE SUBMITTED**

**2. EVIDENCE SUBMITTED UNDER NOA # 20-1106.08 AND NEW**

**A. DRAWINGS**

1. None.

**B. TESTS**

1. None.

**C. CALCULATIONS**

1. None.

**D. MATERIAL CERTIFICATIONS**

1. Notice of Acceptance No. **22-0317.02**, issued to Plaskolite, LLC, for their TUFFAK Polycarbonate Sheets, approved on 04/21/2022 and expiring on 08/27/2027.

**E. QUALITY ASSURANCE**

1. Miami-Dade Department of Regulatory and Economic Resources (RER).

**F. STATEMENTS**

1. Statement letter of code conformance to the 8<sup>th</sup> edition (2023) of the FBC, issued by Overhead Door Corporation, dated 09/29/2023, signed and sealed by Dwayne J. Kornish, P.E.
2. Statement letter of code conformance to the 7<sup>th</sup> edition (2020) of the FBC, issued by Overhead Door Corporation, dated 10/23/2020, signed and sealed by Dwayne J. Kornish, P.E.



---

**Carlos M. Utrera, P.E.**  
**Product Control Examiner**  
**NOA-No: 23-1013.05**  
**Expiration Date: November 01, 2028**  
**Approval Date: November 22, 2023**



3/8" X 3" LAG SCREW, WITH  
1-1/8" WASHER, MAX. OF  
18" O.C., MIN. 2-3/4" EDGE  
DISTANCE

2 X 6 # 3 SP (G=0.55)  
OR BETTER

WOOD MOUNTED TO # 3 SOUTHERN PINE SUBSTRATE

3/8" DIA. SIMPSON TITEN HD  
FASTENER, MAX. OF 15" O.C., 2-3/4"  
MIN. EMBED INTO MIN. 1500 PSI GROUT  
FILLED CMU, MIN. 4" EDGE DISTANCE

1-1/8" O.D. WASHER

WOOD MOUNTED TO GROUT FILLED MASONRY  
BLOCK DETAIL

3" EDGE DISTANCE

3/8" DIA. SIMPSON TITEN HD FASTENER, MAX. OF  
24" O.C., 2-3/4" MIN. EMBED INTO MIN. 2000 PSI  
CONCRETE, MIN. 3" EDGE DISTANCE

1-1/8" O.D. WASHER

WOOD MOUNTED TO 2000 PSI  
CONCRETE DETAIL

2 X 6 # 3 SP (G=0.55)  
OR BETTER

5/16" X 1-5/8" LAG SCREW  
INTO MIN 2 X 6 # 3 SP (G=0.55)  
OR BETTER. (SEE DOOR  
ELEVATION ON SHEET 1 FOR  
HOLE LOCATIONS)

2.75 ± 1" EDGE DISTANCE

13 GA CONT. WALL ANGLE

1/4-20 X 9/16"

TRACK CLIP

TRACK BOLT AND

1/4-20 HEX NUT

OPTIONAL: WALL ANGLE MAY BE  
ATTACHED TO SUPPORTING STEEL  
WITH MIN. (1) 1/4 - 14 X 1" SELF  
DRILLING SCREW WITH 1" O.D. WASHER,  
IN LIEU OF WELDING. (SEE DOOR  
ELEVATION ON SHEET 1 FOR HOLE  
LOCATIONS)

MOUNTING TO WOOD  
JAMB DETAIL

MOUNTING TO STEEL  
JAMB DETAIL

4" EDGE DISTANCE

2 ANCHOR OPTIONS:  
1.) 3/8" DIA. SIMPSON TITEN HD  
FASTENER, 2-3/4" MIN. EMBED INTO MIN.  
2000 PSI CONCRETE, MIN. 4" EDGE  
DISTANCE  
2.) 3/8" DIA. HILTI KWIK BOLT 3,  
EXPANSION ANCHOR, 2-1/2" MIN. EMBED,  
MIN. 4" EDGE DISTANCE

1" O.D. WASHER

MOUNTING TO GROUT FILLED MASONRY  
BLOCK DETAIL

EDGE DISTANCE

3 ANCHOR OPTIONS;  
1.) 3/8" DIA. SIMPSON TITEN HD FASTENER, 2-3/4"  
MIN. EMBED INTO MIN. 2000 PSI CONCRETE, MIN.  
3" EDGE DISTANCE  
2.) 3/8" DIA. HILTI KWIK BOLT 3, EXPANSION  
ANCHOR, 2-1/2" MIN. EMBED, MIN. 4" EDGE  
DISTANCE  
3.) 3/8" DIA. POWER LOK/BOLT, EXPANSION  
ANCHOR, 1-5/8" MIN. EMBED, MIN. 4" EDGE  
DISTANCE

1" O.D. WASHER

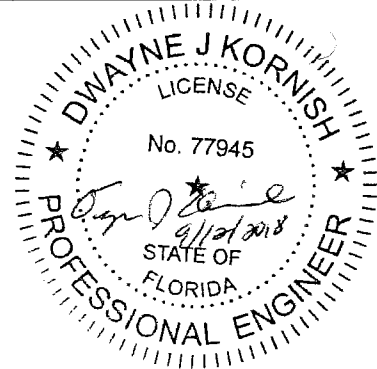
\*(SEE DOOR ELEVATION ON  
SHEET 1 FOR HOLE LOCATIONS)

MOUNTING TO 2000 PSI  
CONCRETE DETAIL

**PRODUCT REVISED**  
as complying with the Florida  
Building Code  
NOA-No. 23-1013.05

Expiration Date 11/01/2028

By *[Signature]*  
Miami-Dade Product Control



DWAYNE J. KORNISH, PE  
4576 COUNTY ROAD 160  
MOUNT HOPE, OHIO  
FL PE 77945 TX PE 117868

PROFESSIONAL ENGINEER'S SEAL PROVIDED ONLY FOR  
VERIFICATION OF WINDLOAD CONSTRUCTION DETAILS.

**PRODUCT APPROVED**  
as complying with the Florida  
Building Code  
NOA-No. 17-1207.09

Approval Date 11/01/2018

By *[Signature]*  
Miami-Dade Product Control

IMPACT LITE-13-3/4" X 20-1/8"  
MAXIMUM SIZE WITH 7-1/8"  
MAX SCREW SPACING

DAYLIGHT OPENING = 9-1/2" X 16"  
(MAXIMUM SIZE)

1/4" POLYCARBONATE

GLASS BITE = 1/2"

EXTERIOR FRAME,  
6063-T6 ALUMINUM

#8 X 1" SHEETMETAL SCREW  
(10X FOR 13-3/4" X 20-1/8" FRAME)

SHEET METAL (SECTION)

INTERIOR FRAME, 6063-T6 ALUMINUM

WINDOW DETAIL

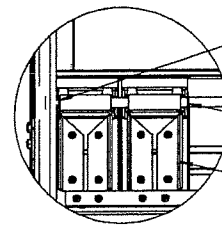
SECTION F-F  
SCALE 1:2

MIN. OF 5 FASTENERS FOR MAXIMUM  
SIZE OF 6" EXHAUST PORT. BOLT SIZE  
MIN 2-1/2" X 3/16" DIA. FOR INSULATED  
DOORS, AND MIN 3/4" X 3/16" DIA. FOR  
UNINSULATED DOORS.

SHEET METAL (SECTION)

EXHAUST PORT  
DETAIL

SECTION G-G  
SCALE 1:4



DETAIL H  
SCALE 1:4

**PRODUCT REVISED**  
as complying with the Florida  
Building Code  
NOA-No. 20-1106.08



Expiration Date 11/01/2023

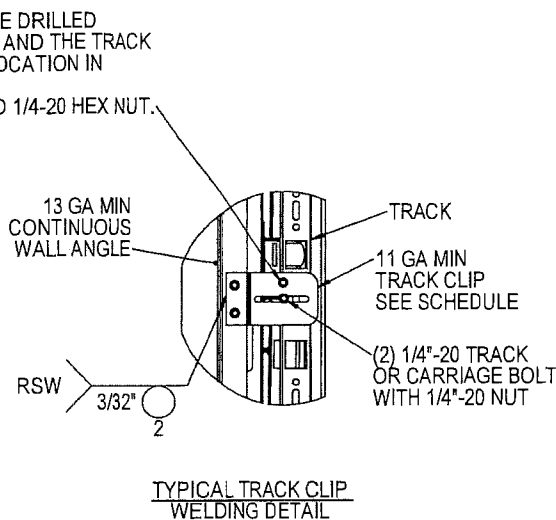
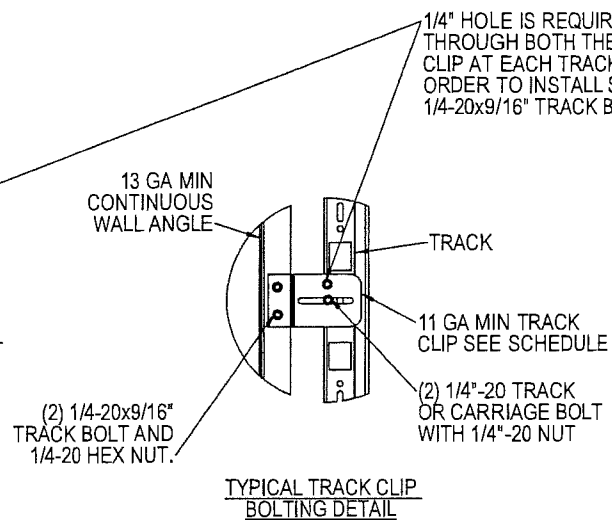
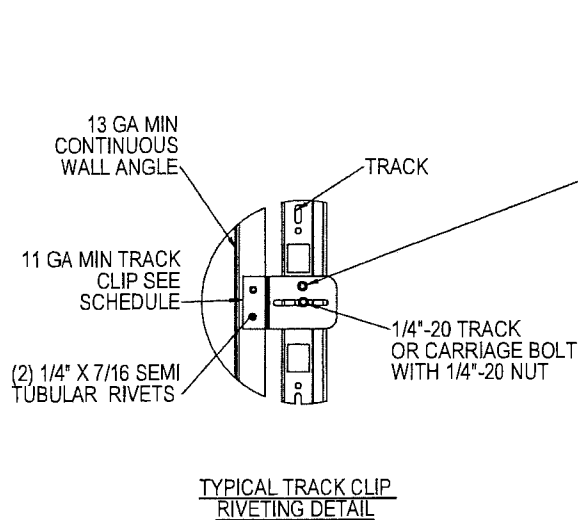
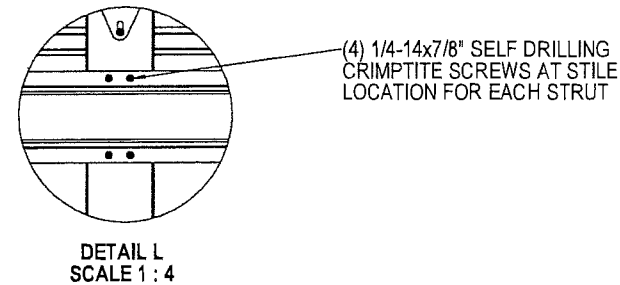
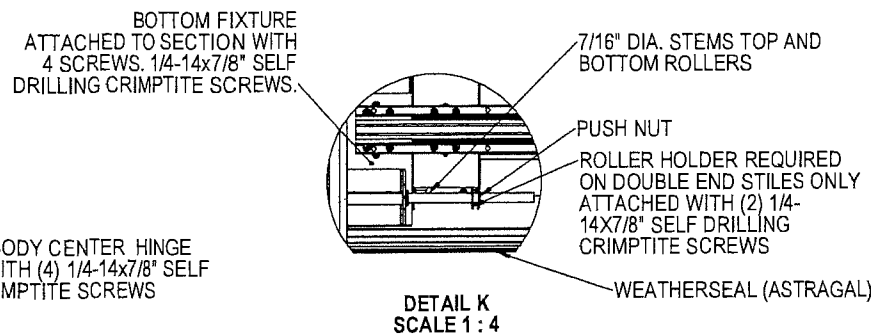
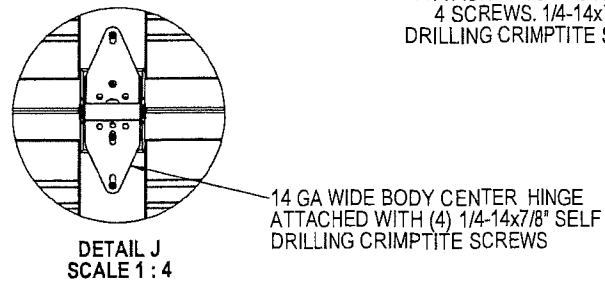
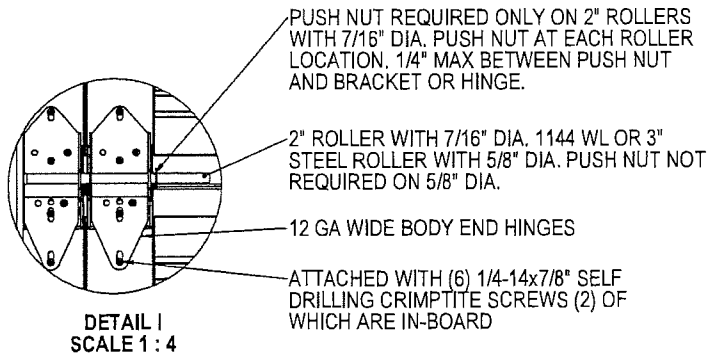
By *[Signature]*  
Miami-Dade Product Control

7/16" DIA. STEMS TOP  
AND BOTTOM ROLLERS

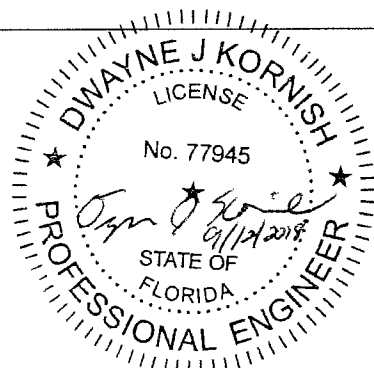
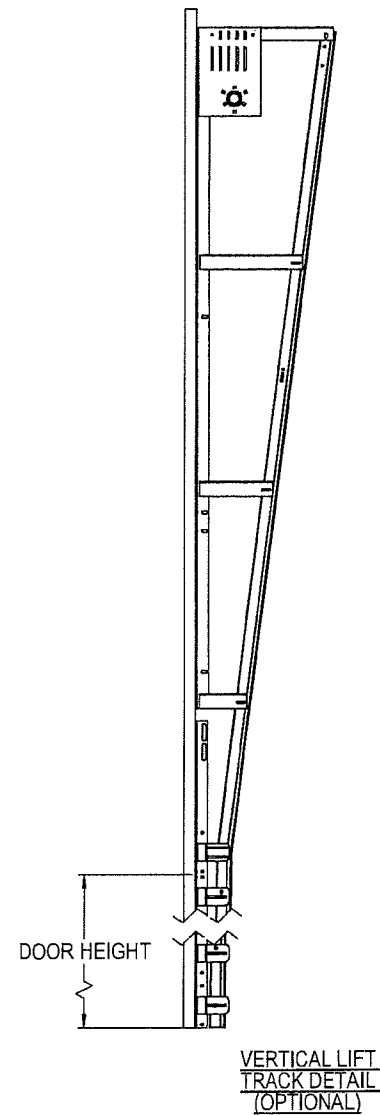
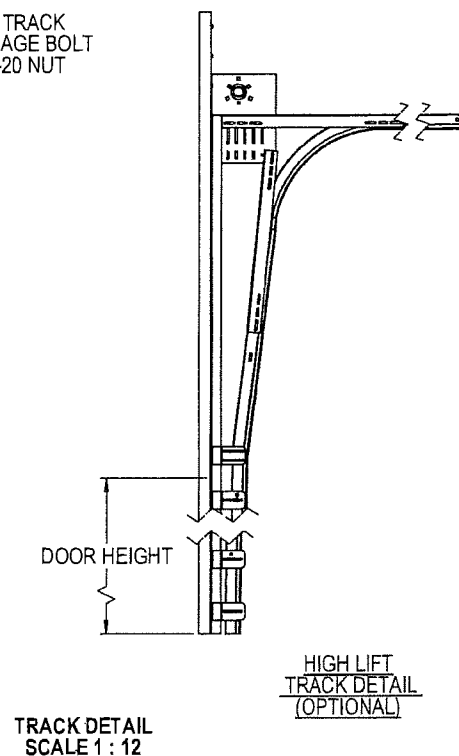
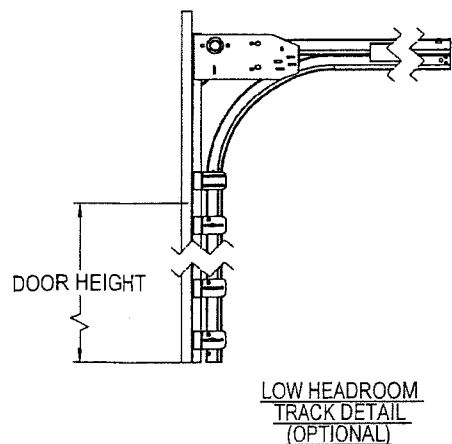
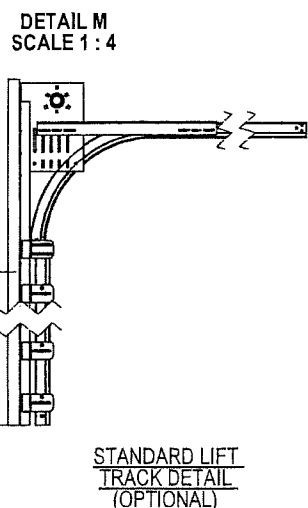
PUSH NUT

TOP FIXTURE ATTACH  
TO SECTION WITH 4  
SCREWS, 1/4-14x7/8" SELF  
DRILLING CRIMPTITE SCREWS.

|  |  |  |           |            |            |   |              |     |
|--|--|--|-----------|------------|------------|---|--------------|-----|
| <div>THIRD ANGLE PROJECTION</div> <div></div> | UNLESS OTHERWISE SPECIFIED   |  | APPROVALS |            | DATE       | The Genuine. The Original.  |              |     |
|  | INTERPRET DIMS & TOLS<br>PER ASME Y14.5M<br><br>ALL DIMS ARE IN<br>INCHES<br><br>DO NOT SCALE  | TOLERANCES:<br><br>X = ± .1<br>.XX = ± .03<br>.XXX = ± .010<br>ANGULAR = ± .5 °              | DRAWN     | E. CONRAD  | 4/4/18     |  LEWISVILLE, TEXAS                 |              |     |
|  |  |  | CHECKED   | D. KORNISH | -          | DESCRIPTION<br>WINDLOAD COMMERCIAL SECTIONAL<br>STEEL DOOR, 421/423/427/429, +50/-56PSF<br>DADE COUNTY, 14'2" MAX WIDTH |              |     |
|  |  |  | APPROVED  | -          | -          |   |              |     |
|  |  |  | MATERIAL  | -          | -          |   |              |     |
| OVERHEAD DOOR CORP<br>2501 S. STATE HWY 121<br>SUITE 200<br>LEWISVILLE, TEXAS 75067<br>469-549-7100                                | DIM CIRCLED WITH SYMBOL 'Ø'<br>ARE CRITICAL TO QUALITY DESIGN<br>FEATURES & MUST MEET APPLICABLE<br>IN-PROCESS INSPECTION STANDARDS. | HOLES:<br><br>< Ø.251 = +.004/- .003<br>Ø.251-Ø.500 = +.006/- .003<br>> Ø.500 = +.008/- .003 | FINISH    | -          | -          | SIZE  | DWG NO.      | REV |
|  |  | ALL GEOMETRY GOVERNED BY 3D CAD DATABASE:<br>411500  |           |            | D          | D-411500  | P-           |     |
|  |  |  |           |            | SCALE 1:12 | UOM = EA  | SHEET 2 OF 4 |     |



**PRODUCT REVISED**  
as complying with the Florida  
Building Code  
NOA-No. 23-1013.05  
Expiration Date 11/01/2028  
By *[Signature]*  
Miami-Dade Product Control



DWAYNE J. KORNISH, PE  
4576 COUNTY ROAD 160  
MOUNT HOPE, OHIO  
FL PE 77945 TX PE 117868

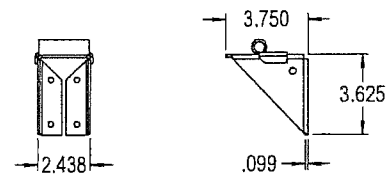
PROFESSIONAL ENGINEER'S SEAL PROVIDED ONLY FOR  
VERIFICATION OF WINDLOAD CONSTRUCTION DETAILS.

**PRODUCT APPROVED**  
as complying with the Florida  
Building Code  
NOA-No. 17-1207.09  
Approval Date 11/01/2018  
By *[Signature]*  
Miami-Dade Product Control

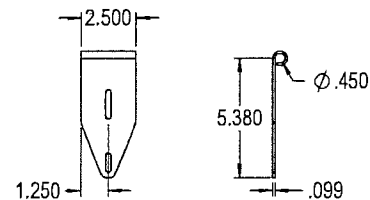
**PRODUCT REVISED**  
as complying with the Florida  
Building Code  
NOA-No. 20-1106.08  
Expiration Date 11/01/2023  
By *[Signature]*  
Miami-Dade Product Control

|  |   |  |   |  |  |
|--|---|--|---|--|--|
| <p>THIRD ANGLE PROJECTION</p> <p>OVERHEAD DOOR CORP<br/>2501 S. STATE HWY 121<br/>SUITE 200<br/>LEWISVILLE, TEXAS 75067<br/>469-549-7100</p> | UNLESS OTHERWISE SPECIFIED  |  | APPROVALS DATE  |  | <p>The Genuine. The Original.</p> <p>LEWISVILLE, TEXAS</p> |
|  | <p>INTERPRET DIMS &amp; TOLS<br/>PER ASME Y14.5M<br/>ALL DIMS ARE IN<br/>INCHES<br/>DO NOT SCALE<br/>DIMS CIRCLED WITH SYMBOL 'C'<br/>ARE CRITICAL TO QUALITY DESIGN<br/>FEATURES &amp; MUST MEET APPLICABLE<br/>IN-PROCESS INSPECTION STANDARDS.</p> | <p>TOLERANCES:</p> <p>X = ± .1<br/>XX = ± .03<br/>XXX = ± .010<br/>ANGULAR = ± .5°</p> <p>HOLES:</p> <p>&lt; Ø.251 = +.004/- .003<br/>Ø.251-Ø.500 = +.006/- .003<br/>&gt; Ø.500 = +.008/- .003</p> <p>ALL GEOMETRY GOVERNED BY 3D CAD DATABASE:<br/>411500</p> | <p>DRAWN E. CONRAD 4/4/18<br/>CHECKED D. KORNISH -<br/>APPROVED - -<br/>MATERIAL - -<br/>FINISH - -</p> | <p>DESCRIPTION<br/>WINDLOAD COMMERCIAL SECTIONAL<br/>STEEL DOOR, 421/423/427/429, +50/-56PSF<br/>DADE COUNTY, 14'2" MAX WIDTH</p> <p>SIZE DWG NO.<br/>D D-411500</p> |  |
| SCALE 1:12   |   |  |   | UOM = EA   | SHEET 3 OF 4   |

NOTES: (UNLESS OTHERWISE SPECIFIED)  
1.FOR DIMENSION AND NOTE REFERENCES, REFER TO INDIVIDUAL DRAWINGS.

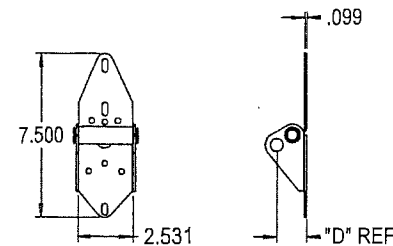


P/N 066590-0000, TOP FIXTURE  
STANDARD  
(ATTACH WITH (4) 1/4"-14 X 7/8" SELF DRILLING CRIMPTITE SCREWS)

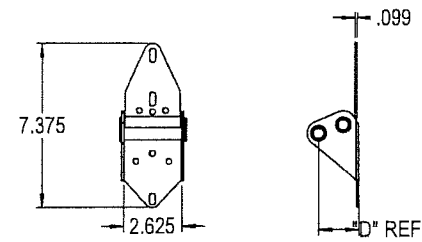


P/N 061371-0001 FIXTURE, TOP, 7/4  
(ATTACH WITH (4) 1/4"-14 X 7/8" SELF DRILLING CRIMPTITE SCREWS)

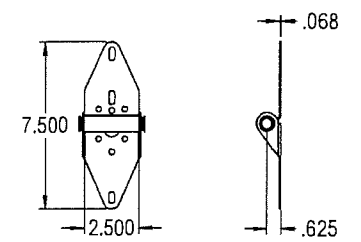
#### TOP FIXTURE DETAILS



P/N 400643-XXXX, END HINGE  
STANDARD  
(ATTACH WITH (6) 1/4"-14 X 7/8" SELF DRILLING CRIMPTITE SCREWS (2) OF WHICH IS IN-BOARD HOLES)

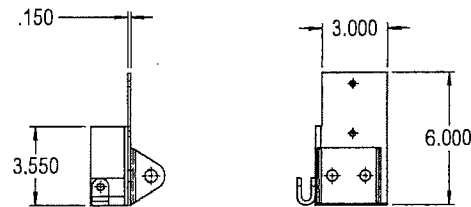


P/N 404043-XXXX, END HINGE  
HEAVY DUTY 5/8" STEM  
(ATTACH WITH (6) 1/4"-14 X 7/8" SELF DRILLING CRIMPTITE SCREWS (2) OF WHICH IS IN-BOARD HOLES)

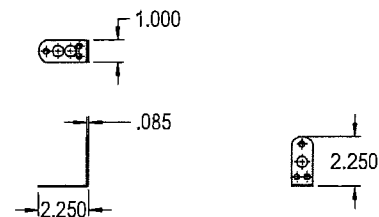


P/N 400735-XXXX, CENTER HINGE  
STANDARD  
(ATTACH WITH (4) 1/4"-14 X 7/8" SELF DRILLING CRIMPTITE SCREWS)

#### HINGE DETAILS

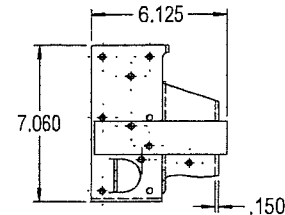


P/N 401124-XXXX, BOTTOM FIXTURE  
(ATTACH WITH (4) 1/4"-14 X 7/8" SELF DRILLING CRIMPTITE SCREWS)

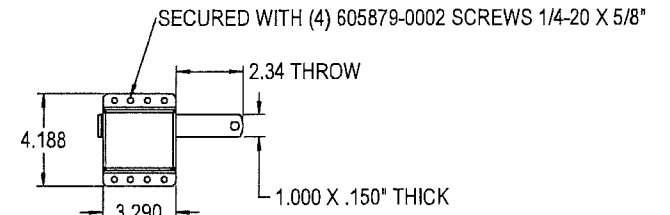


P/N 405742-0001, BRACKET ROLLER SHAFT  
(BRACKET ATTACHED)  
(ATTACH WITH (2) 1/4"-14 X 7/8" SELF DRILLING CRIMPTITE SCREWS)

#### BOTTOM FIXTURE DETAILS

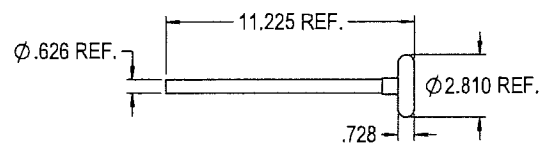


P/N 061537-XXXX, BOTTOM FIXTURE  
(ATTACH WITH (4) 1/4"-14 X 7/8" SELF DRILLING CRIMPTITE SCREWS)

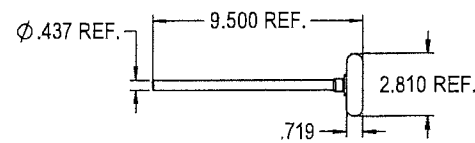


P/N 333871, SIDE LOCK ASSY

#### LOCK DETAILS

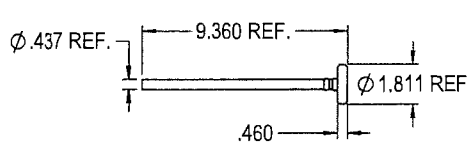


P/N 404046-0002, ROLLER ASSY.  
3" TR-7 5/8" STEM

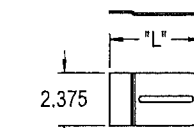


P/N 61337-0006, ROLLER ASSY.  
3" TR-7 7/16" STEM

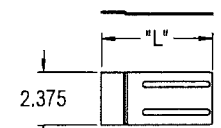
#### ROLLER STEM ASSY DETAILS



P/N 318700, ROLLER ASSY.  
2" WL 1144

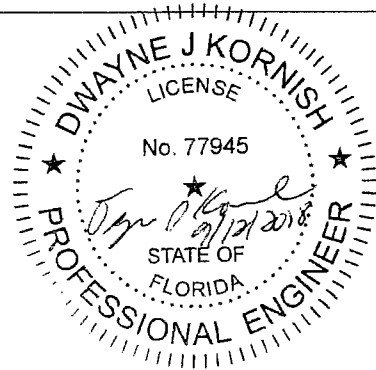


P/N 405965-XXXX, TRACK CLIP  
11 GA



P/N 408263-XXXX, JOINT BRACKET  
11 GA

#### BRACKET DETAILS



DWAYNE J. KORNISH, PE  
4576 COUNTY ROAD 160  
MOUNT HOPE, OHIO  
FL PE 77945 TX PE 117868

PROFESSIONAL ENGINEER'S SEAL PROVIDED ONLY FOR  
VERIFICATION OF WINDLOAD CONSTRUCTION DETAILS.

**PRODUCT REVISED**  
as complying with the Florida  
Building Code  
NOA-No. 23-1013.05

Expiration Date 11/01/2028

By *[Signature]*  
Miami-Dade Product Control

**PRODUCT APPROVED**  
as complying with the Florida  
Building Code  
NOA-No. 17-1207.09

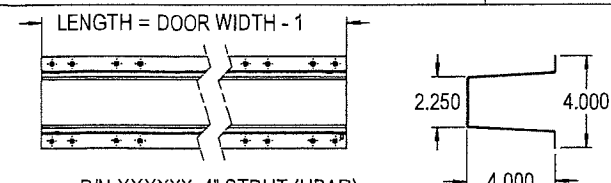
Approval Date 11/01/2018

By *[Signature]*  
Miami-Dade Product Control

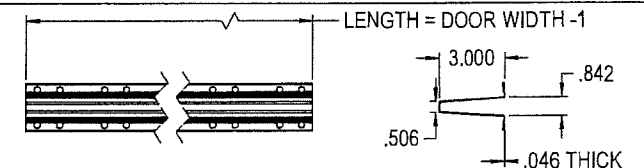
**PRODUCT REVISED**  
as complying with the Florida  
Building Code  
NOA-No. 20-1106.08

Expiration Date 11/01/2023

By *[Signature]*  
Miami-Dade Product Control

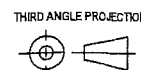


P/N XXXXXX-4" STRUT (UBAR)  
80 KSI MIN. YIELD STRENGTH, 4" X 16 GA



P/N 3347262- STRUT, 3, OPEN WL (UBAR)  
80 KSI MIN. YIELD STRENGTH, 3" X 18 GA

#### STRUT DETAILS



OVERHEAD DOOR CORP  
2501 S. STATE HWY 121  
SUITE 200  
LEWISVILLE, TEXAS 75067  
469-549-7100

INTERPRET DIMS & TOLS  
PER ASME Y14.5M  
ALL DIMS ARE IN  
INCHES  
DO NOT SCALE

DIMS CIRCLED WITH SYMBOL 'C'  
ARE CRITICAL TO QUALITY DESIGN  
FEATURES & MUST MEET APPLICABLE  
IN-PROCESS INSPECTION STANDARDS.

UNLESS OTHERWISE SPECIFIED

TOLERANCES:

.X = ±  
.XX = ±  
.XXX = ±  
ANGULAR = ± °

HOLES:

< Ø.251 = ±  
Ø.251-Ø.500 = ±  
> Ø.500 = ±

ALL GEOMETRY GOVERNED BY 3D CAD DATABASE:  
411500

APPROVALS DATE  
DRAWN E. CONRAD 4/4/18  
CHECKED D. KORNISH  
APPROVED  
MATERIAL

FINISH

The Genuine. The Original.  
LEWISVILLE, TEXAS

DESCRIPTION  
WINDLOAD COMMERCIAL SECTIONAL  
STEEL DOOR, 421/423/427/429, +50/-56PSF  
DADE COUNTY, 14'2" MAX WIDTH

SIZE DWG NO.  
D D-411500

SCALE 1:12 UOM =EA SHEET 4 OF 4