



MIAMI-DADE COUNTY  
PRODUCT CONTROL SECTION

DEPARTMENT OF REGULATORY AND ECONOMIC RESOURCES (RER)  
BOARD AND CODE ADMINISTRATION DIVISION

11805 SW 26 Street, Room 208  
Miami, Florida 33175-2474  
T (786) 315-2590 F (786) 315-2599

**NOTICE OF ACCEPTANCE (NOA)**

[www.miamidade.gov/economy](http://www.miamidade.gov/economy)

**Wayne Dalton a Div. of Overhead Door Corporation**  
**3395 Addison Drive**  
**Pensacola, FL 32514**

**SCOPE:**

This NOA is being issued under the applicable rules and regulations governing the use of construction materials. The documentation submitted has been reviewed and accepted by Miami-Dade County RER-Product Control Section to be used in Miami-Dade County and other areas, where allowed by the Authority Having Jurisdiction (AHJ).

This NOA shall not be valid after the expiration date stated below. The Miami-Dade County Product Control Section (In Miami-Dade County) and/ or the AHJ (in areas other than Miami-Dade County) reserve the right to have this product or material tested for quality assurance purposes. If this product or material fails to perform in the accepted manner, the manufacturer will incur the expense of such testing and the AHJ may immediately revoke, modify, or suspend the use of such product or material within their jurisdiction. RER reserves the right to revoke this acceptance if it is determined by Miami-Dade County Product Control Section that this product or material fails to meet the requirements of the applicable building code.

This product is approved as described herein and has been designed to comply with the Florida Building Code, including the High Velocity Hurricane Zone.

**DESCRIPTION: Models C20 and C24 Code 2500 Steel Sectional Garage Door up to 10ft.-2in. Wide with Optional EPS Insulation and Impact Resistant Glazing**

**APPROVAL DOCUMENT:** Drawing No. **361777**, titled "Windload Commercial Sectional Steel Door, C20 and C24, +50/-56PSF Dade County, 10'2" Max. Width", sheets 1 through 4 of 4, dated 04/23/2018, with revision **P00** dated 07/19/2018, prepared by Wayne Dalton a Div. of Overhead Door Corporation, signed and sealed by Dwayne J. Kornish, P.E., bearing the Miami-Dade County Product Control revision stamp with the NOA number and expiration date by the Miami-Dade County Product Control Section.

**MISSILE IMPACT RATING: Large & Small Missile Impact Resistant**

**LABELING:** A permanent label with the manufacturer's name or logo, manufacturing address, model/ series number, the positive and negative design pressure rating, indicate impact rated if applicable, installation instruction drawing reference number, approval number (NOA), the applicable test standards, and the statement reading 'Miami-Dade County Product Control Approved' is to be located on the door's side track, bottom angle, or inner surface of a panel.

**RENEWAL** of this NOA shall be considered after a renewal application has been filed and there has been no change in the applicable building code negatively affecting the performance of this product.

**TERMINATION** of this NOA will occur after the expiration date or if there has been a revision or change in the materials, use, and/ or manufacture of the product or process. Misuse of this NOA as an endorsement of any product, for sales, advertising or any other purposes shall automatically terminate this NOA. Failure to comply with any section of this NOA shall be cause for termination and removal of NOA.

**ADVERTISEMENT:** The NOA number preceded by the words Miami-Dade County, Florida, and followed by the expiration date may be displayed in advertising literature. If any portion of the NOA is displayed, then it shall be done in its entirety.

**INSPECTION:** A copy of this entire NOA shall be provided to the user by the manufacturer or its distributors and shall be available for inspection at the job site at the request of the Building Official.

This NOA **renews** and **revises** **NOA # 20-1106.15** and consists of this page 1, evidence pages E-1 and E-2, as well as approval document mentioned above.

The submitted documentation was reviewed by **Carlos M. Utrera, P.E.**



**NOA-No: 23-1013.07**  
**Expiration Date: November 01, 2028**  
**Approval Date: November 22, 2023**  
**Page 1**

**Wayne Dalton a Div. of Overhead Door Corporation**

**NOTICE OF ACCEPTANCE: EVIDENCE SUBMITTED**

**1. EVIDENCE SUBMITTED UNDER NOA #'s 18-0122.04**

**A. DRAWINGS**

1. Drawing No. **361777**, titled "Windload Commercial Sectional Steel Door, C20 and C24, +50/-56PSF Dade County, 10'2" Max. Width", sheets 1 through 4 of 4, dated 04/23/2018, with revision **P00** dated 07/19/2018, prepared by Wayne Dalton a Div. of Overhead Door Corporation, signed and sealed by Dwayne J. Kornish, P.E.

**B. TESTS**

1. Test reports on 1) Uniform Static Air Pressure Test, Loading per FBC TAS 202-94  
2) Large Missile Impact Test per FBC, TAS 201-94  
3) Cyclic Wind Pressure Loading per FBC, TAS 203-94  
4) Forced Entry Test, per FBC, TAS 202-94  
5) Tensile Test per ASTM E8  
along with marked-up drawings of a 14'-2" Wide Models C20 and C24 Steel Sectional Doors, prepared by Intertek, Test Report No. **G6343.03-801-18-R1**, dated 09/14/2017, with revision dated 07/20/2018, signed and sealed by Tyler Westerling, P.E.
2. Test report on salt spray exposure, per ASTM B117-16 on G40 and G90 coupons, prepared by Intertek, Report No. **I1314.01-106-18R0**, dated 05/11/2018, signed by Gary T. Hartman.

**C. CALCULATIONS**

1. Anchorage verification calculations prepared by Overhead Door Engineering, dated 07/18/2018, signed and sealed by Dwayne J. Kornish, P.E.

**D. MATERIAL CERTIFICATIONS**

1. Test report on the EPS Insulation, D.F. Self-Ignition Temperature per ASTM D1929-2016, Test Report # **103445527MID-002**, prepared by Intertek, dated 03/23/2017, signed by Bryan Bowman.
2. UL evaluation report on Styropek EPS insulations' Surface Burning Characteristics (Flame Spread and Smoke Density Index) per ANSI/UL723 (ASTM E84), prepared by UL Inc., Test Report # **UL ER38219-01** and dated 04/08/2015.
3. Notice of Acceptance No. **17-0410.01**, issued to Covestro, LLC, for their Makrolon Polycarbonate Sheets, approved on 06/08/2017 and expiring on 08/27/2022.

**E. QUALITY ASSURANCE**

1. Miami-Dade Department of Regulatory and Economic Resources (RER).

**F. STATEMENTS**

1. Statement letter of code conformance to the 6<sup>th</sup> edition (2017) FBC issued by Overhead Door Corporation, dated 09/12/2018, signed and sealed by Dwayne J. Kornish, P.E.
2. No financial interest letter issued by Overhead Door Corporation, dated 09/12/2018, signed and sealed by Dwayne J. Kornish, P.E.



**Carlos M. Utrera, P.E.**  
**Product Control Examiner**  
**NOA-No: 23-1013.07**

**Expiration Date: November 01, 2028**  
**Approval Date: November 22, 2023**

**Wayne Dalton a Div. of Overhead Door Corporation**

**NOTICE OF ACCEPTANCE: EVIDENCE SUBMITTED**

**2. EVIDENCE SUBMITTED UNDER NOA # 20-1106.15 AND NEW**

**A. DRAWINGS**

1. None.

**B. TESTS**

1. None.

**C. CALCULATIONS**

1. None.

**D. QUALITY ASSURANCE**

1. Miami-Dade Department of Regulatory and Economic Resources (RER).

**E. MATERIAL CERTIFICATIONS**

1. Test report on flame spread and smoke developed of BASF polyurethane foam per ASTM E84, Test Report # RJ7233F-1, dated 10/14/2019, prepared by QAI Laboratories, Inc. and signed by Brian Ortega.
2. Test report on ignition temperature of BASF polyurethane foam per ASTM D1929, Test Report # 10399361SAT-4, dated 10/14/2019, prepared by Intertek Building & Construction (B&C), signed by Servando Romo.
3. Notice of Acceptance No. **22-0317.02**, issued to Plaskolite, LLC, for their TUFFAK Polycarbonate Sheets, approved on 04/21/2022 and expiring on 08/27/2027.

**F. STATEMENTS**

1. Statement letter of code conformance to the 8<sup>th</sup> edition (2023) of the FBC, issued by Wayne Dalton a Div. of Overhead Door Corporation, dated 09/29/2023, signed and sealed by Dwayne J. Kornish P.E.
2. Statement letter of code conformance to the 7<sup>th</sup> edition (2020) of the FBC, issued by Wayne Dalton a Div. of Overhead Door Corporation, dated 01/21/2021, signed and sealed by Dwayne J. Kornish P.E.



---

**Carlos M. Utrera, P.E.**  
**Product Control Examiner**  
**NOA-No: 23-1013.07**

**Expiration Date: November 01, 2028**  
**Approval Date: November 22, 2023**

NOTES: (UNLESS OTHERWISE SPECIFIED)

1. RATED DESIGN LOAD +50/-56 PSF.
2. SECTION HEIGHTS MAY VARY TO CREATE VARIOUS DOOR HEIGHTS, 24" MAXIMUM SECTION HEIGHT.
3. MINIMUM 1" OVERLAP ON BOTH JAMBS REQUIRED TO MEET NEGATIVE DESIGN PRESSURES.
4. TESTED IN ACCORDANCE WITH DADE COUNTY PROTOCOLS TAS 201-94, TAS 202-94, & TAS 203-94.
5. DOOR SKIN MUST BE 50,000 PSI MIN. YIELD STRENGTH.
6. JAMB LOAD CALCULATIONS:  
 $F_x = (1/2 \text{ DOOR WIDTH})(1 \text{ FT OF HEIGHT})(\text{DESIGN PRESSURE})$   
 $F_x = 5.067(1 \text{ FOOT})(50.00 \text{ AND } -56.00)(254.18/284.68) \text{ LB}$
7. JAMB FASTENER REQUIREMENTS:  
 $F_x = (1/2 \text{ DOOR WIDTH})(1 \text{ FT OF HEIGHT})(\text{DESIGN PRESSURE})$   
 $F_x = 254 \text{ LBS.}$
8. DOOR SKIN MATERIAL SHALL BE GALVANIZED ACCORDING TO ASTM A-525 TO G40 MIN, WITH BAKED-ON PRIMER, AND BAKED-ON POLYESTER PAINT TOP COAT.
9. FOR ANCHORING INTO WOOD, USE ONE 5/16" LAG SCREW PER TRACK BRACKET WITH 1-1/2" EMBEDMENT INTO SOUTHERN PINE (G=0.55) OR BETTER.
10. APPROVED INSULATED AND NON-INSULATED: C-24 (24 GA), C-20 (20 GA).
11. WELD SLOT ON ANGLE 3/32" X 1" LONG ON 12" CENTERS. "IF WELDING MOUNTING OPTION IS CHOSEN."
12. LIFT UP MECHANISM-MANUAL, CHAIN LIFT, OR OPERATOR IS NOT PART OF THIS APPROVAL.
13. STANDARD LIFT, HIGH LIFT, VERTICAL LIFT, AND LOW HEADROOM TRACK IS AVAILABLE. FOR LOW HEADROOM LIFT CONDITIONS TOP BRACKET SHALL BE 13 GA LHR 7/4 TOP BRACKET WITH A MIN OF (3) 1/4 - 14 X 7/8" SELF DRILLING CRIMPTITE SCREWS IN LIEU OF THE BRACKET SHOWN ON DRAWING. U-BAR ON TOP SECTION SHALL BE INSTALLED ON TOP OF LHR TOP BRACKETS.
14. ATTACH STRUTS WITH (4) 1/4-14x7/8" SELF DRILLING CRIMPTITE SCREWS AT ALL STILE LOCATIONS, TYP. +/-3" FROM CENTER OF SECTION. STRUT ON BOTTOM SECTION, TO BE 6" FROM THE BOTTOM.
15. KEY LOCK, OR SIDE LOCK REQUIRED.
16. EXHAUST PORTS- OPTIONAL UP TO 3 PER BOTTOM SECTION.
17. IMPACT RESISTANT GLAZING OPTION- IMPACT RESISTANT GLAZING SYSTEM MAY BE INSTALLED INTERMEDIATE SECTION ONLY. GLAZING SHALL BE 1/4" POLYCARBONATE. 13-3/4" X 20-1/8" MAXIMUM SIZE, FASTENED WITH # 8 X 1" SMS: 3X MAX ALONG THE HORIZONTAL AND 2X MAX ALONG THE VERTICAL. SEE DETAIL F-F ON SHEET 2 FOR ASSEMBLY DETAILS.
18. THE DESIGN OF THE SUPPORTING STRUCTURAL ELEMENTS SHALL BE THE RESPONSIBILITY OF THE PROFESSIONAL OF RECORD FOR THE BUILDING OR STRUCTURE AND IN ACCORDANCE WITH CURRENT BUILDING CODES FOR THE LOADS LISTED ON THIS DRAWING.

**PRODUCT REVISED**  
as complying with the Florida  
Building Code  
NOA-No. 20-1106.15

Expiration Date 11/01/2023

By *[Signature]*  
Miami-Dade Product Control

**PRODUCT APPROVED**  
as complying with the Florida  
Building Code  
NOA-No. 18-0122.04

Approval Date 11/01/2018

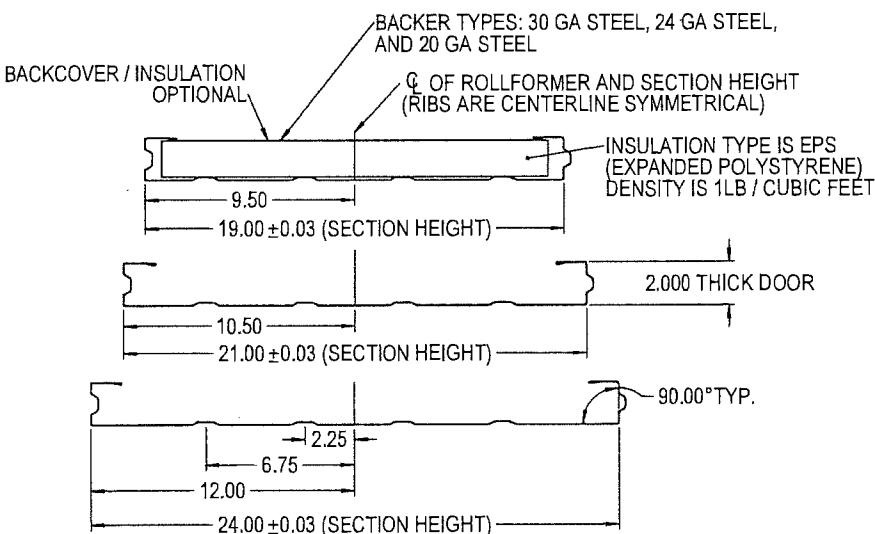
By *[Signature]*  
Miami-Dade Product Control

REVISIONS				
ER	REV	DESCRIPTION	DATE	APVL
ER 31715	P00	NEW DRAWING	7/19/18	ESC

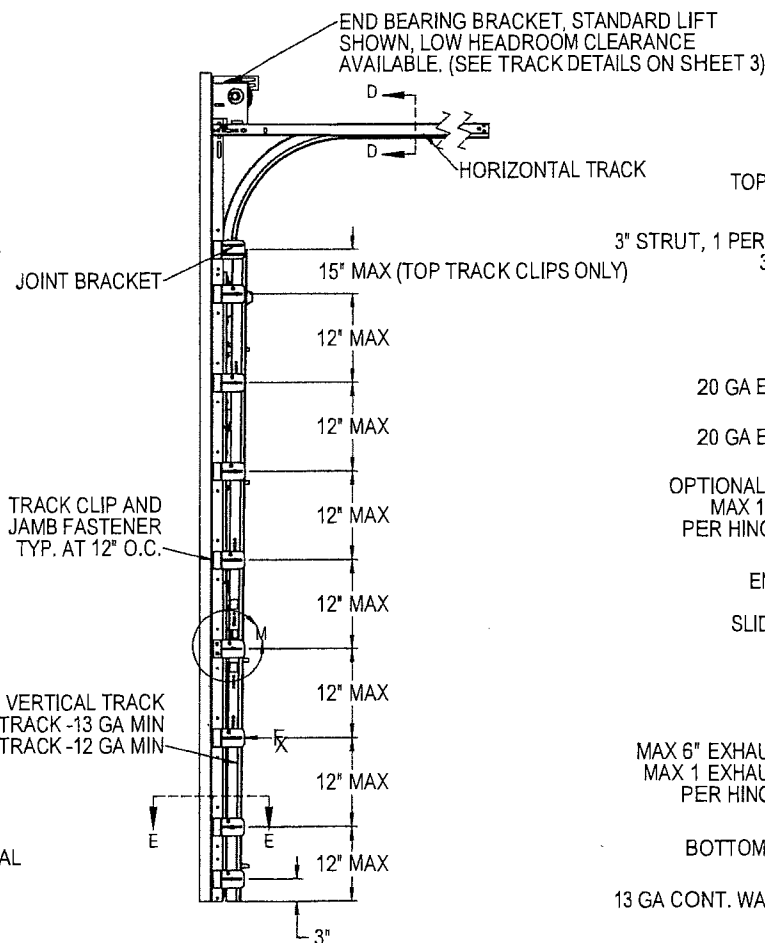
**PRODUCT REVISED**  
as complying with the Florida  
Building Code  
NOA-No. 23-1013.07

Expiration Date 11/01/2028

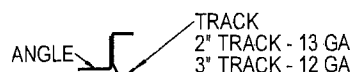
By *[Signature]*  
Miami-Dade Product Control



SECTION A-A  
SCALE 1:4

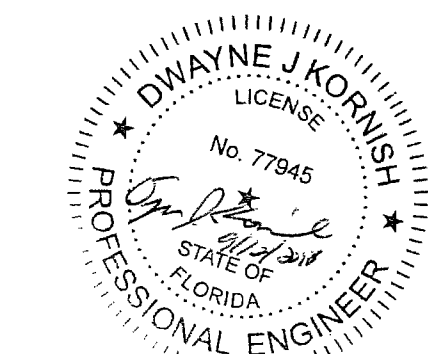


SECTION C-C  
SCALE 1:4



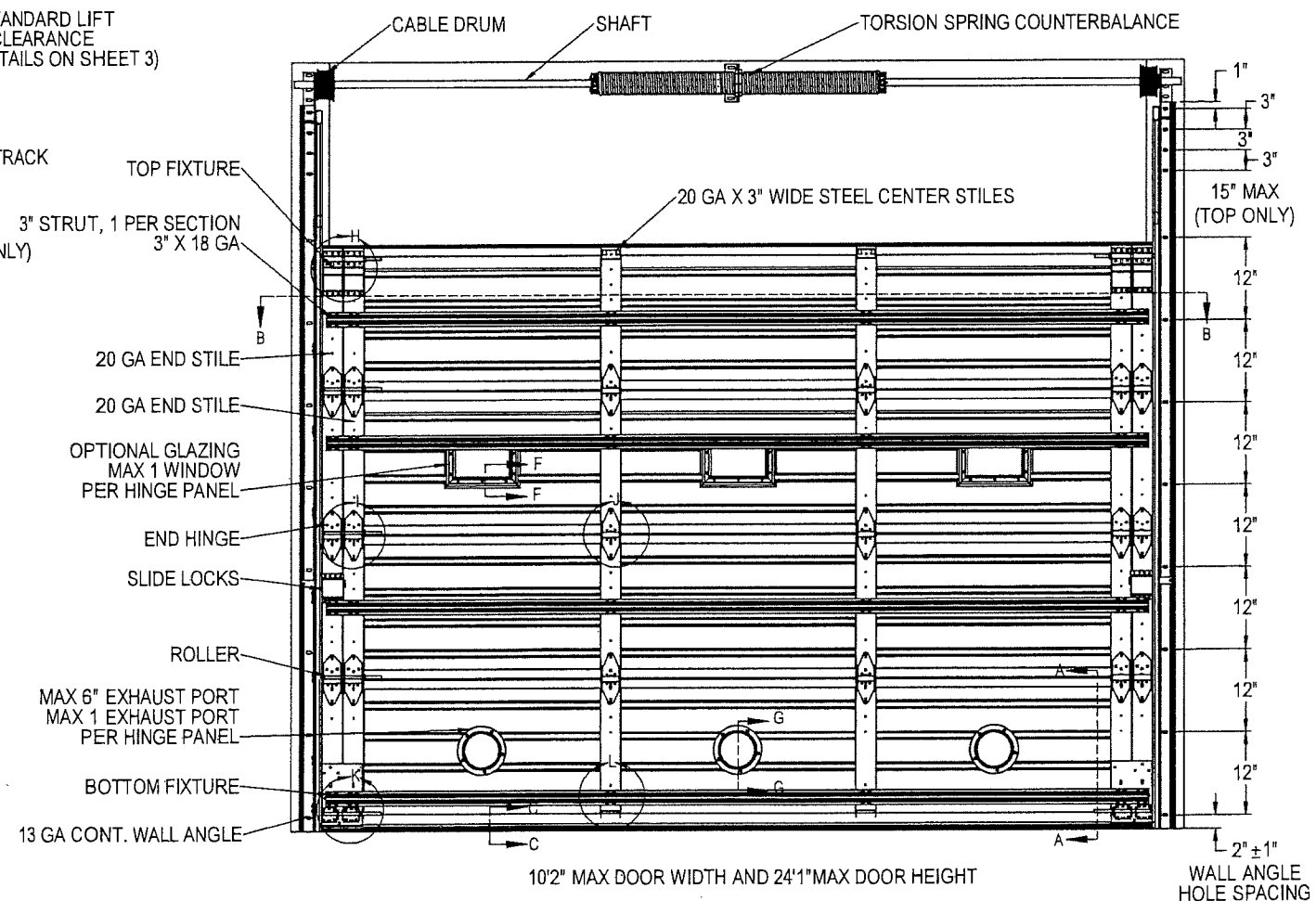
SECTION D-D  
SCALE 1:4

DOOR WIDTH	NUMBER OF CENTER STILES
8'-2" - 10'-2"	2



DWAYNE J. KORNISH, PE  
4576 COUNTY ROAD 160  
MOUNT HOPE, OHIO  
FL PE 77945 TX PE 117868

PROFESSIONAL ENGINEER'S SEAL PROVIDED ONLY FOR  
VERIFICATION OF WINDLOAD CONSTRUCTION DETAILS.

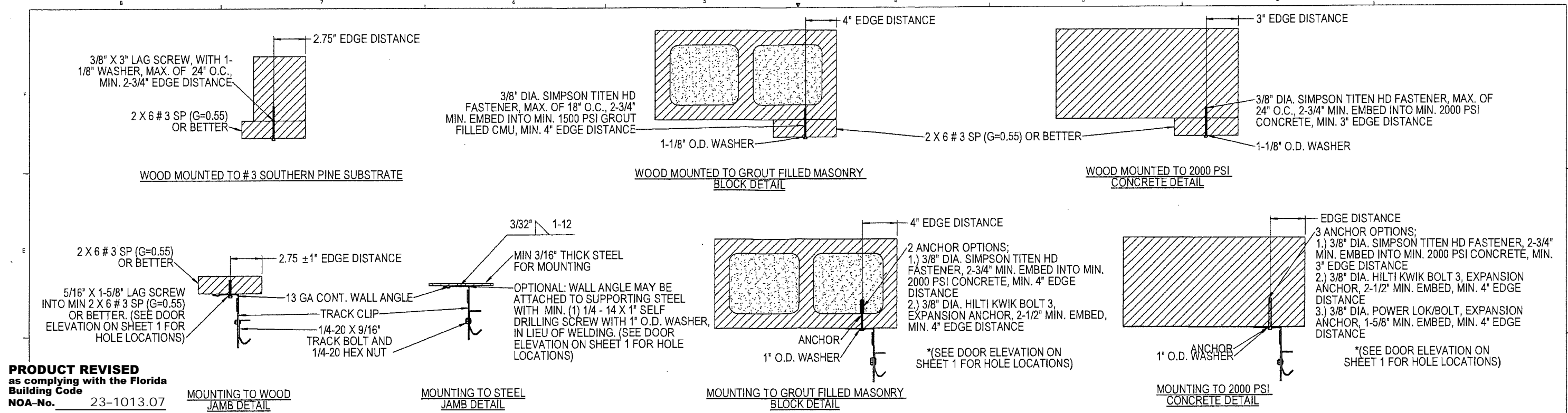


10'2" MAX DOOR WIDTH AND 24'1" MAX DOOR HEIGHT

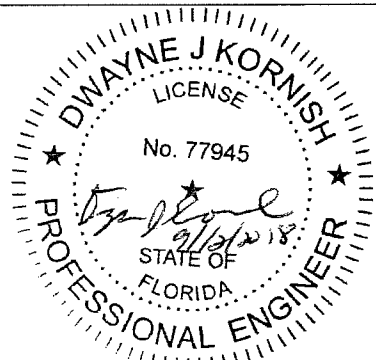
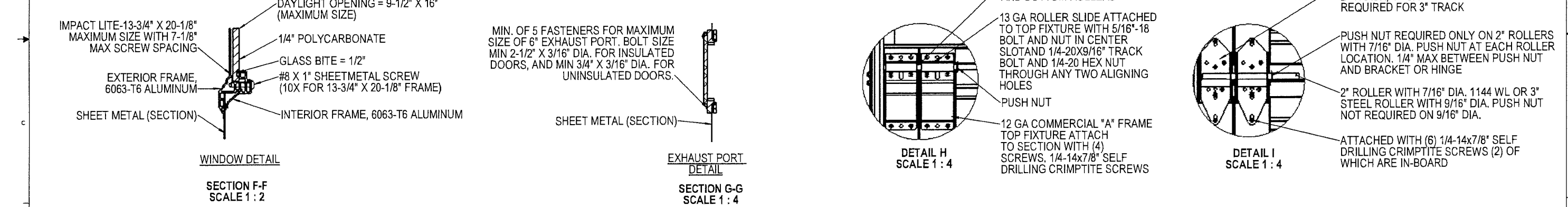
WALL ANGLE  
HOLE SPACING

UNLESS OTHERWISE SPECIFIED			APPROVALS		DATE
INTERPRET DIMS & TOLS PER ASME Y14.5M ALL DIMS ARE IN INCHES DO NOT SCALE			DRAWN	E. CONRAD	4/23/18
TOLERANCES: X = ± .1 XX = ± .03 XXX = ± .010 ANGULAR = ± .5°			CHECKED	D. KORNISH	-
HOLES: < Ø.251 = +.004/- .003 Ø.251-Ø.500 = +.006/- .003 > Ø.500 = +.008/- .003			APPROVED	-	-
ALL GEOMETRY GOVERNED BY 3D CAD DATABASE: 361777			MATERIAL	-	-
DIMS CIRCLED WITH SYMBOL 'C' ARE CRITICAL TO QUALITY DESIGN. FEATURES & MUST MEET APPLICABLE IN-PROCESS INSPECTION STANDARDS.			FINISH	-	-
A DIVISION OF OVERHEAD DOOR CORP 3395 ADDISON DRIVE PENSACOLA, FLORIDA 32514 (850)-474-9890			WINDLOAD SPECIFICATION OPTION CODE 2500		SIZE DWG NO. D-361777
			Wayne Dalton GARAGE DOORS		PENSACOLA, FLORIDA
			DESCRIPTION WINDLOAD COMMERCIAL SECTIONAL STEEL DOOR, C20 AND C24, +50/-56PSF DADE COUNTY, 10'2" MAX WIDTH		REV P-00
			SCALE 1:12 UOM = EA		SHEET 1 OF 4





**PRODUCT REVISED**  
 as complying with the Florida Building Code  
 NOA-No. 23-1013.07  
 Expiration Date 11/01/2028  
 By *[Signature]*  
 Miami-Dade Product Control



DWAYNE J. KORNISH, PE  
 4576 COUNTY ROAD 160  
 MOUNT HOPE, OHIO  
 FL PE 77945 TX PE 117868

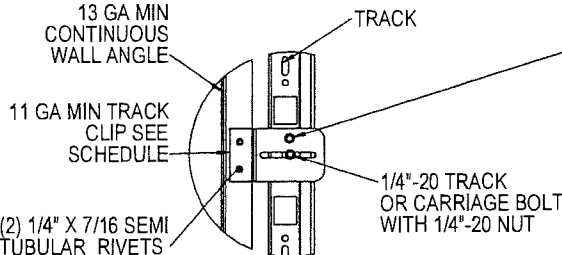
PROFESSIONAL ENGINEER'S SEAL PROVIDED ONLY FOR VERIFICATION OF WINDLOAD CONSTRUCTION DETAILS.

**PRODUCT APPROVED**  
 as complying with the Florida Building Code  
 NOA-No. 18-0122.04  
 Approval Date 11/01/2018  
 By *[Signature]*  
 Miami-Dade Product Control

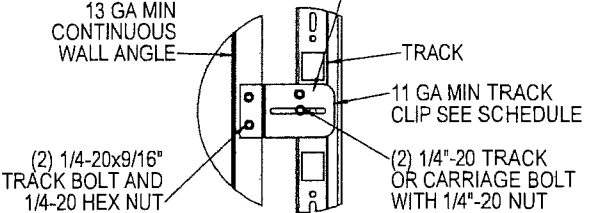
**PRODUCT REVISED**  
 as complying with the Florida Building Code  
 NOA-No. 20-1106.15  
 Expiration Date 11/01/2023  
 By *[Signature]*  
 Miami-Dade Product Control

THIRD ANGLE PROJECTION 	UNLESS OTHERWISE SPECIFIED		APPROVALS DATE		<b>Wayne Dalton</b> PARADE DOORS PENSACOLA, FLORIDA
	INTERPRET DIMS & TOLS PER ASME Y14.5M ALL DIMS ARE IN INCHES DO NOT SCALE DIMS CIRCLED WITH SYMBOL 'C' ARE CRITICAL TO QUALITY DESIGN FEATURES & MUST MEET APPLICABLE IN-PROCESS INSPECTION STANDARDS.	TOLERANCES: .X = ± .1 .XX = ± .03 .XXX = ± .010 ANGULAR = ± .5° HOLES: < Ø.251 = +.004/- .003 Ø.251-Ø.500 = +.006/- .003 > Ø.500 = +.008/- .003	DRAWN E. CONRAD 4/23/18 CHECKED D. KORNISH APPROVED MATERIAL FINISH	DESCRIPTION WINDLOAD COMMERCIAL SECTIONAL STEEL DOOR, C20 AND C24, +50/-56PSF DADE COUNTY, 10'2" MAX WIDTH WINDLOAD SPECIFICATION OPTION CODE 2500	
A DIVISION OF OVERHEAD DOOR CORP 3395 ADDISON DRIVE PENSACOLA, FLORIDA 32514 (850)-474-9890		ALL GEOMETRY GOVERNED BY 3D CAD DATABASE: 361777		SIZE DWG NO. D D-361777	REV P-00
				SCALE 1:12 UOM = EA SHEET 2 OF 4	

NOTES: (UNLESS OTHERWISE SPECIFIED)  
1. ONE 3" STRUT PER SECTION, ATTACHED WITH 1/4-14X7/8" SELF DRILLING CRIMPTITE SCREWS.

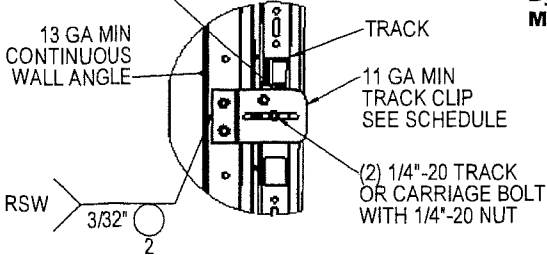


TYPICAL TRACK CLIP RIVETING DETAIL

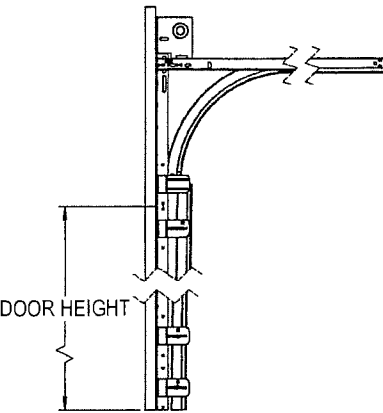


TYPICAL TRACK CLIP BOLTING DETAIL

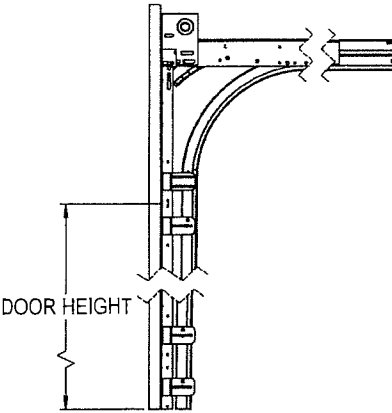
DETAIL M  
SCALE 1 : 4



TYPICAL TRACK CLIP WELDING DETAIL

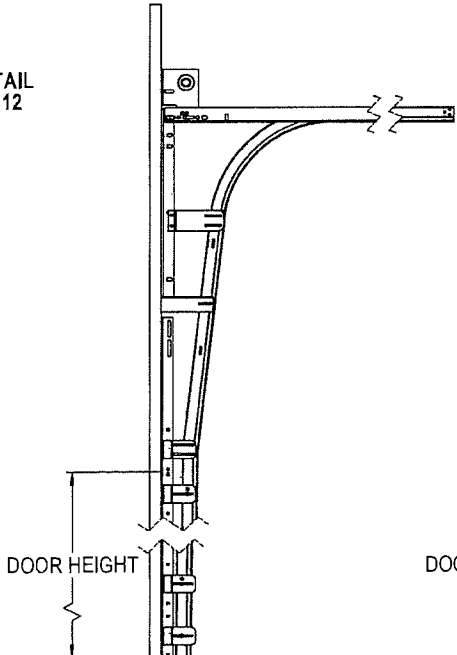


STANDARD LIFT TRACK DETAIL

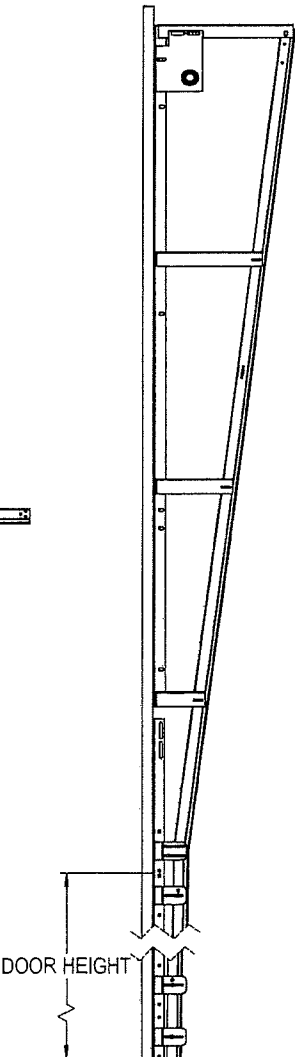


LOW HEADROOM TRACK DETAIL

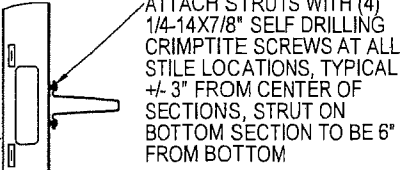
TRACK DETAIL  
SCALE 1 : 12



HIGH LIFT TRACK DETAIL



VERTICAL LIFT TRACK DETAIL

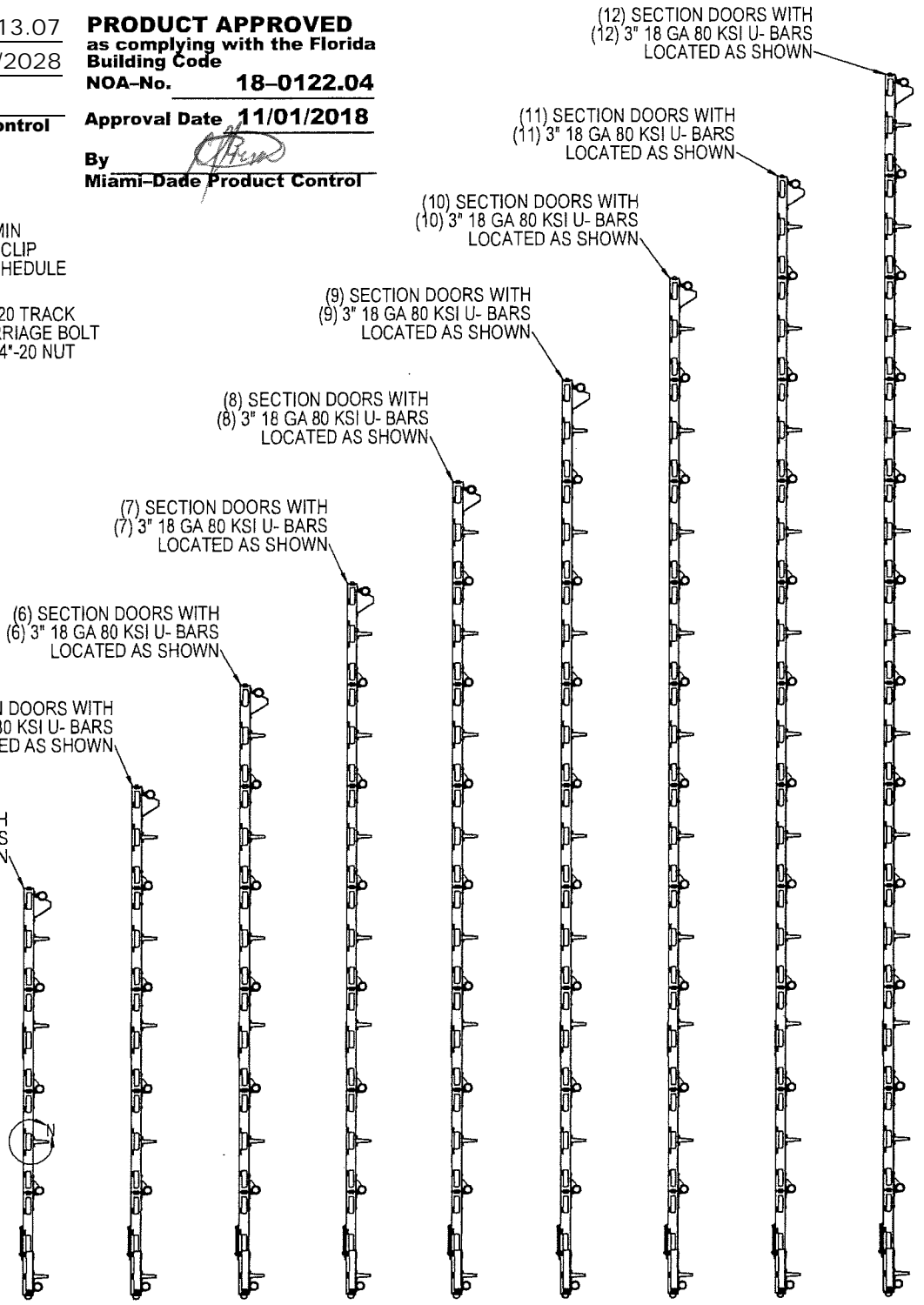


DETAIL N  
SCALE 1 : 4

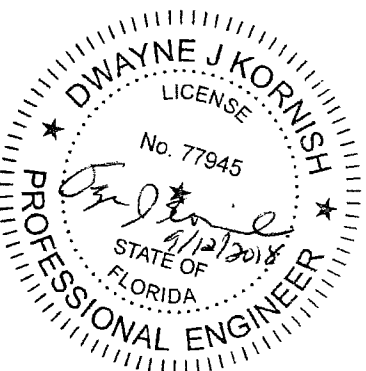
**PRODUCT REVISED**  
as complying with the Florida Building Code  
NOA-No. 23-1013.07  
Expiration Date 11/01/2028  
By *[Signature]*  
Miami-Dade Product Control

**PRODUCT REVISED**  
as complying with the Florida Building Code  
NOA-No. 20-1106.15  
Expiration Date 11/01/2023  
By *[Signature]*  
Miami-Dade Product Control

**PRODUCT APPROVED**  
as complying with the Florida Building Code  
NOA-No. 18-0122.04  
Approval Date 11/01/2018  
By *[Signature]*  
Miami-Dade Product Control

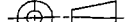
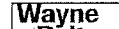


STRUT LOCATIONS  
SCALE 1 : 16



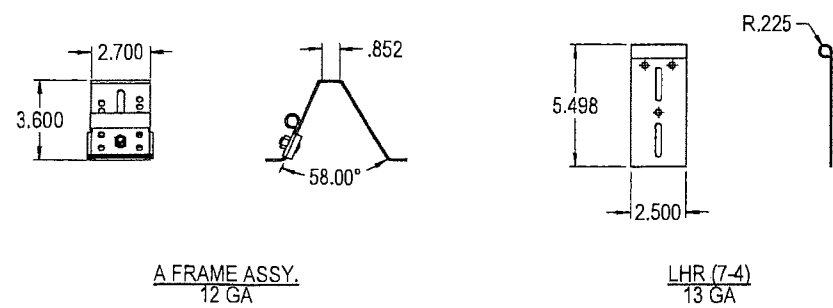
DWAYNE J. KORNISH, PE  
4576 COUNTY ROAD 160  
MOUNT HOPE, OHIO  
FL PE 77945 TX PE 117868

PROFESSIONAL ENGINEER'S SEAL PROVIDED ONLY FOR VERIFICATION OF WINDLOAD CONSTRUCTION DETAILS.

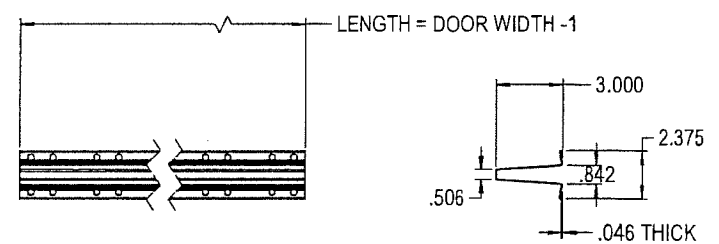
<div>THIRD ANGLE PROJECTION</div> <div></div>	UNLESS OTHERWISE SPECIFIED		APPROVALS DATE		<div></div> <div>PENSACOLA, FLORIDA</div>
	INTERPRET DIMS & TOLS PER ASME Y14.5M  ALL DIMS ARE IN INCHES  DO NOT SCALE  DIM CIRCLED WITH SYMBOL 'C' ARE CRITICAL TO QUALITY DESIGN FEATURES & MUST MEET APPLICABLE IN-PROCESS INSPECTION STANDARDS.	TOLERANCES:  X = ± .1 XX = ± .03 XXX = ± .010 ANGULAR = ± .5 °  HOLES:  < Ø.251 = +.004/- .003 Ø.251-Ø.500 = +.006/- .003 > Ø.500 = +.008/- .003	DRAWN E. CONRAD 4/23/18		
			CHECKED D. KORNISH -		
			APPROVED -		
			MATERIAL -		
A DIVISION OF OVERHEAD DOOR CORP 3395 ADDISON DRIVE PENSACOLA, FLORIDA 32514 (850)-474-9890			FINISH -		DESCRIPTION WINDLOAD COMMERCIAL SECTIONAL STEEL DOOR, C20 AND C24, +50/-56PSF DADE COUNTY, 10'2" MAX WIDTH
			WINDLOAD SPECIFICATION OPTION CODE 2500	SIZE DWG NO. D D-361777	REV P-00
	ALL GEOMETRY GOVERNED BY 3D CAD DATABASE: 361777			SCALE 1:12	UOM = EA

NOTES: (UNLESS OTHERWISE SPECIFIED)  
1. FOR DIMENSIONS AND NOTE REFERENCES, REFER TO INDIVIDUAL DRAWINGS.

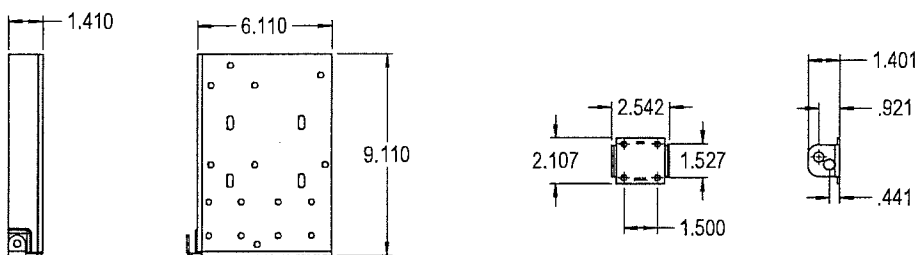
**PRODUCT REVISED**  
as complying with the Florida  
Building Code  
NOA-No. 23-1013.07  
Expiration Date 11/01/2028  
By *[Signature]*  
Miami-Dade Product Control



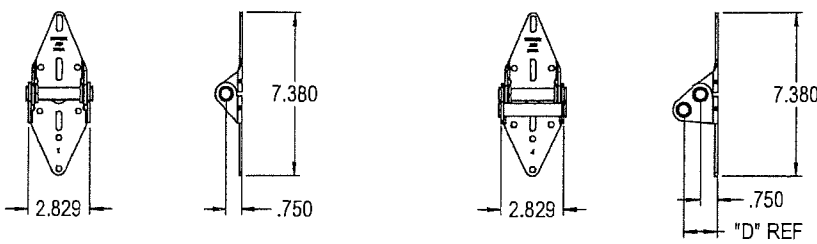
TOP FIXTURE DETAILS



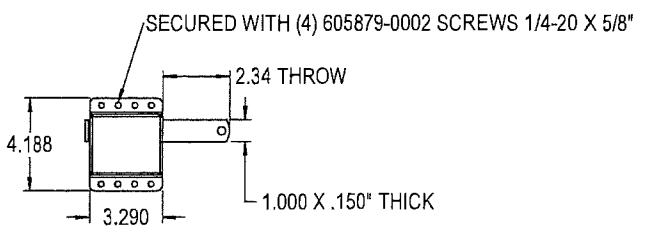
STRUT DETAILS



BOTTOM FIXTURE DETAILS

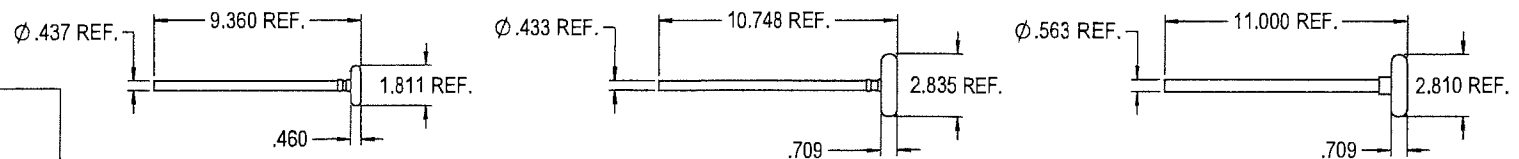


HINGE DETAILS



SIDE LOCK ASSY

LOCK DETAILS

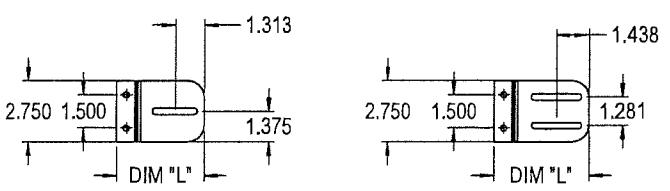


ROLLER ASSY, 2" WL 1144

ROLLER ASSY, 3" 7/16" STEM

ROLLER ASSY, 3" 9/16" STEM

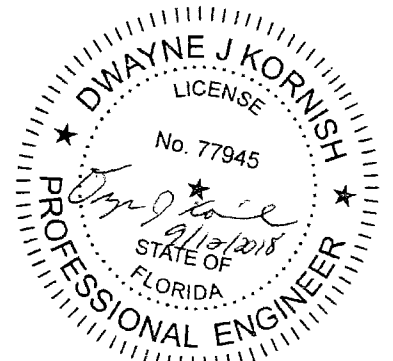
ROLLER STEM ASSY DETAILS



TRACK CLIP  
11 GA

JOINT BRACKET  
11 GA

BRACKET DETAILS



DWAYNE J. KORNISH, PE  
4576 COUNTY ROAD 160  
MOUNT HOPE, OHIO  
FL PE 77945 TX PE 117868

PROFESSIONAL ENGINEER'S SEAL PROVIDED ONLY FOR  
VERIFICATION OF WINDLOAD CONSTRUCTION DETAILS.

**PRODUCT APPROVED**  
as complying with the Florida  
Building Code  
NOA-No. 18-0122.04  
Approval Date 11/01/2018  
By *[Signature]*  
Miami-Dade Product Control

**PRODUCT REVISED**  
as complying with the Florida  
Building Code  
NOA-No. 20-1106.15  
Expiration Date 11/01/2023  
By *[Signature]*  
Miami-Dade Product Control

<div>THIRD ANGLE PROJECTION</div> <div></div>	UNLESS OTHERWISE SPECIFIED		APPROVALS DATE		<div><div>Wayne Dalton</div><div>GARAGE DOORS</div></div> PENSACOLA, FLORIDA	
	INTERPRET DIMS & TOLS PER ASME Y14.5M ALL DIMS ARE IN INCHES DO NOT SCALE	TOLERANCES:	DRAWN	E. CONRAD	4/23/18	DESCRIPTION WINDLOAD COMMERCIAL SECTIONAL STEEL DOOR, C20 AND C24, +50/-56PSF DADE COUNTY, 10'2" MAX WIDTH
<div>X = ±</div> <div>.XX = ±</div> <div>.XXX = ±</div> <div>ANGULAR = ± °</div>		CHECKED	D. KORNISH			
A DIVISION OF OVERHEAD DOOR CORP 3395 ADDISON DRIVE PENSACOLA, FLORIDA 32514 (850)-474-9890	DIMS CIRCLED WITH SYMBOL 'O' ARE CRITICAL TO QUALITY DESIGN FEATURES & MUST MEET APPLICABLE IN-PROCESS INSPECTION STANDARDS.	HOLES:	MATERIAL		SIZE DWG NO. D D-361777	
		<div>&lt; Ø.251 = +/-</div> <div>Ø.251-Ø.500 = +/-</div> <div>&gt; Ø.500 = +/-</div>	FINISH			
		ALL GEOMETRY GOVERNED BY 3D CAD DATABASE: 361777		WINDLOAD SPECIFICATION OPTION CODE 2500		REV P-00
						SCALE 1:12