



DEPARTMENT OF REGULATORY AND ECONOMIC RESOURCES (RER)  
BOARD AND CODE ADMINISTRATION DIVISION

**NOTICE OF ACCEPTANCE (NOA)**

MIAMI-DADE COUNTY  
PRODUCT CONTROL SECTION

11805 SW 26 Street, Room 208  
Miami, Florida 33175-2474  
T (786) 315-2590 F (786) 315-2599

[www.miamidade.gov/economy](http://www.miamidade.gov/economy)

**Clopay Corporation**  
**8585 Duke Boulevard**  
**Mason, OH 45040**

**SCOPE:**

This NOA is being issued under the applicable rules and regulations governing the use of construction materials. The documentation submitted has been reviewed and accepted by Miami-Dade County RER-Product Control Section to be used in Miami-Dade County and other areas where allowed by the Authority Having Jurisdiction (AHJ).

This NOA shall not be valid after the expiration date stated below. The Miami-Dade County Product Control Section (In Miami-Dade County) and/or the AHJ (in areas other than Miami-Dade County) reserve the right to have this product or material tested for quality assurance purposes. If this product or material fails to perform in the accepted manner, the manufacturer will incur the expense of such testing and the AHJ may immediately revoke, modify, or suspend the use of such product or material within their jurisdiction. RER reserves the right to revoke this acceptance, if it is determined by Miami-Dade County Product Control Section that this product or material fails to meet the requirements of the applicable building code.

This product is approved as described herein and has been designed to comply with the Florida Building Code, including the High Velocity Hurricane Zone.

**DESCRIPTION: 2in. EPS Insulated W8 DP46 Steel Sectional Garage Door up to 16ft.-2in. Wide w/ Optional Impact Resistant Lites**

**APPROVAL DOCUMENT:** Drawing No. **104736**, titled “2” EPS Ins. 16’ Doors”, sheets 1 through 3 of 3, dated 10/26/2012, with revision **07** dated 09/07/2023, prepared by Clopay Corporation, signed and sealed by Mark Westerfield, P.E., bearing the Miami-Dade County Product Control revision stamp with the Notice of Acceptance number and expiration date by the Miami-Dade County Product Control Section.

**MISSILE IMPACT RATING: Large and Small Missile Impact Resistant**

**LABELING:** A permanent label with the manufacturer’s name or logo, manufacturing address, model number, the positive and negative design pressure rating, indicate impact rated if applicable, installation instruction drawing reference number, approval number (NOA), the applicable test standards, and the statement reading ‘Miami-Dade County Product Control Approved’ is to be located on the door’s side track, bottom angle, or inner surface of a panel.

**RENEWAL** of this NOA shall be considered after a renewal application has been filed and there has been no change in the applicable building code negatively affecting the performance of this product.

**TERMINATION** of this NOA will occur after the expiration date or if there has been a revision or change in the materials, use, and/or manufacture of the product or process. Misuse of this NOA as an endorsement of any product, for sales, advertising or any other purposes shall automatically terminate this NOA. Failure to comply with any section of this NOA shall be cause for termination and removal of NOA.

**ADVERTISEMENT:** The NOA number preceded by the words Miami-Dade County, Florida, and followed by the expiration date may be displayed in advertising literature. If any portion of the NOA is displayed, then it shall be done in its entirety.

**INSPECTION:** A copy of this entire NOA shall be provided to the user by the manufacturer or its distributors and shall be available for inspection at the job site at the request of the Building Official.

This NOA **renews** and **revises** **NOA # 22-1116.04** and consists of this page 1 and evidence pages E-1, E-2 and E-3, as well as approval document mentioned above.

The submitted documentation was reviewed by **Carlos M. Utrera, P.E.**



  
12/21/23

NOA No 23-1026.02  
Expiration Date: January 31, 2029  
Approval Date: December 28, 2023

**NOTICE OF ACCEPTANCE: EVIDENCE SUBMITTED**

**1. EVIDENCE SUBMITTED UNDER PREVIOUS NOA's**

**A. DRAWINGS “Submitted under NOA # 17-1016.17”**

1. Drawing No. **104736**, titled “2” EPS Ins. 16’ Doors”, sheets 1 through 3 of 3, dated 10/26/2012, with revision **04** dated 7/2017, prepared by Clopay Building Products Company, signed and sealed by Scott Hamilton, P.E.

**B. TESTS “Submitted under NOA # 13-0402.04”**

1. Addendum to Test Report No. **ATLNC 0827.01-12**, dated 02/06/2013, signed and sealed by David W. Johnson, P.E.

**“Submitted under NOA # 12-1108.01”**

2. Test reports on 1) Uniform Static Air Pressure Test, Loading per FBC TAS 202-94  
2) Large Missile Impact Test per FBC, TAS 201-94  
3) Cyclic Wind Pressure Loading per FBC, TAS 203-94  
4) Forced Entry Test, per FBC 2411 3.2.1, TAS 202-94  
5) Tensile Test per ASTM E8

Along with marked-up drawings and installation diagram of 16’2”x 8’, 27ga steel garage door Model 4300 with windows, prepared by American Test Lab, Inc., Test Report No. **ATLNC 0827.01-12**, dated 10/09/2012, signed and sealed by David W. Johnson, P.E.

3. Test report on Salt Spray per ASTM B117 of painted G40 galvanized coated panels, prepared by Stork Materials Technology, Test Report No. **30160-04-63365**, dated 01/26/2005, signed by John D. Lee, P.E.

**C. CALCULATIONS “Submitted under NOA # 12-1108.01”**

1. Jamb anchor calculations prepared by Clopay Building Products Company, dated 11/05/2012, signed and sealed by Scott Hamilton, P.E.

**D. QUALITY ASSURANCE**

1. Miami-Dade Department of Regulatory and Economic Resources (RER).

**E. MATERIAL CERTIFICATIONS**

1. Notice of Acceptance No. **15-0915.08** issued to SABIC Innovative Plastics, US LLC for their Lexan Polycarbonate Sheet Products, approved on 12/10/2015, expiring on 07/17/2018.
2. Test report on Surface Burning Characteristics, per ASTM E84 of Type I EPS, Test Report No. **3082960-500**, prepared by Intertek Testing Services, NA, Inc., dated 10/04/2005, signed by Javier Trevino.
3. Test report on Ignition Properties of Plastics per ASTM D1929 of Type I EPS, Test Report No. **3082959-500**, prepared by Intertek Testing Services, NA, Inc., dated 09/16/2005, signed by C. Anthony Peñaloza.



---

**Carlos M. Utrera, P.E.**  
**Product Control Examiner**  
**NOA No 23-1026.02**  
**Expiration Date: January 31, 2029**  
**Approval Date: December 28, 2023**

Clopay Corporation

**NOTICE OF ACCEPTANCE: EVIDENCE SUBMITTED**

- F. STATEMENTS “Submitted under NOA # 15-0225.15”**
1. Statement letter of code conformance with the 2010 and the 5<sup>th</sup> edition (2014) FBC issued by Clopay Building Products Company, dated 02/18/2015, signed and sealed by Scott Hamilton, P.E.  
*“Submitted under NOA # 12-1108.01”*
  2. Statement letters of code conformance to 2010 FBC and no financial interest, issued by Clopay Building Products Company, dated 11/05/2012, signed and sealed by Scott Hamilton, P.E.
  3. Statement letter of code conformance to **6<sup>th</sup> Edition (2017) FBC**, issued by Clopay Building Products Company, dated 10/04/2017, signed and sealed by Scott Hamilton, P.E. *“Submitted under NOA # 17-1016.17”*
- 2. EVIDENCE SUBMITTED UNDER PREVIOUS NOA # 20-0922.19**
- A. DRAWINGS**
1. Drawing No. **104736**, titled “2” EPS Ins. 16’ Doors”, sheets 1 through 3 of 3, dated 10/26/2012, with revision **06** dated 08/26/2020, prepared by Clopay Corporation, dated 09/10/2020, signed and sealed by Scott Hamilton, P.E.
- B. TESTS**
1. None.
- C. CALCULATIONS**
1. None.
- D. QUALITY ASSURANCE**
1. Miami-Dade Department of Regulatory and Economic Resources (RER)
- E. MATERIAL CERTIFICATIONS**
1. None.
- F. STATEMENTS**
1. Statement letters of code conformance to **6<sup>th</sup> Edition (2017) and 7<sup>th</sup> Edition (2020) FBC**, issued by Clopay Corporation, dated 09/15/2020, signed and sealed by Scott Hamilton, P.E.
  2. Certificate of amendment changing the company name from Clopay Building Products Company, Inc. to Clopay Corporation, issued by the State of Delaware, dated 08/27/2019



---

Carlos M. Utrera, P.E.  
Product Control Examiner  
NOA No 23-1026.02  
Expiration Date: January 31, 2029  
Approval Date: December 28, 2023

**NOTICE OF ACCEPTANCE: EVIDENCE SUBMITTED**

**3. NEW EVIDENCE SUBMITTED**

**A. DRAWINGS**

1. Drawing No. **104736**, titled “2” EPS Ins. 16’ Doors”, sheets 1 through 3 of 3, dated 10/26/2012, with revision **07** dated 09/07/2023, prepared by Clopay Corporation, signed and sealed by Mark Westerfield, P.E.

**B. TESTS**

1. Test reports on
  - 1) Uniform Static Air Pressure Test, Loading per FBC TAS 202-94
  - 2) Large Missile Impact Test per FBC, TAS 201-94
  - 3) Cyclic Wind Pressure Loading per FBC, TAS 203-94
  - 4) Forced Entry Test, per TAS 202-94
  - 5) Tensile Test per ASTM E8

along with marked-up drawings and installation diagram of 16’2”x 8’, 27ga steel garage door Model 4300 with windows, prepared by American Test Lab, Inc., Test Report No. **ATLNC 0713.01-23**, dated 08/31/2023, signed and sealed by David W. Johnson, P.E.

**C. CALCULATIONS**

1. Jamb anchoring calculations prepared by Clopay Building Products Company, dated 10/18/2023, signed and sealed by Mark Westerfield, P.E.

**D. QUALITY ASSURANCE**

1. Miami-Dade Department of Regulatory and Economic Resources (RER).

**E. MATERIAL CERTIFICATIONS**

1. None.

**F. STATEMENTS**

1. Statement letter of code conformance to the 8<sup>th</sup> Edition (2023) of the FBC, issued by Clopay Corporation, dated 10/18/2023, signed and sealed by Mark Westerfield, P.E.
2. Statement letter of no financial interest, issued by Clopay Corporation, dated 10/18/2023, signed and sealed by Mark Westerfield, P.E.



---

**Carlos M. Utrera, P.E.**  
**Product Control Examiner**  
**NOA No 23-1026.02**  
**Expiration Date: January 31, 2029**  
**Approval Date: December 28, 2023**

MODELS	24 GA SHORT	27 GA SHORT	27 GA FLUSH	27 GA LONG
CLOPAY	4400, 4401	4300, HDG	4301, HDGF	4310, HDGL
HOLMES	--	66, 66G, 6200	68, 6201	67, 67G, 6203
IDEAL	--	SP200	SF200	SE200

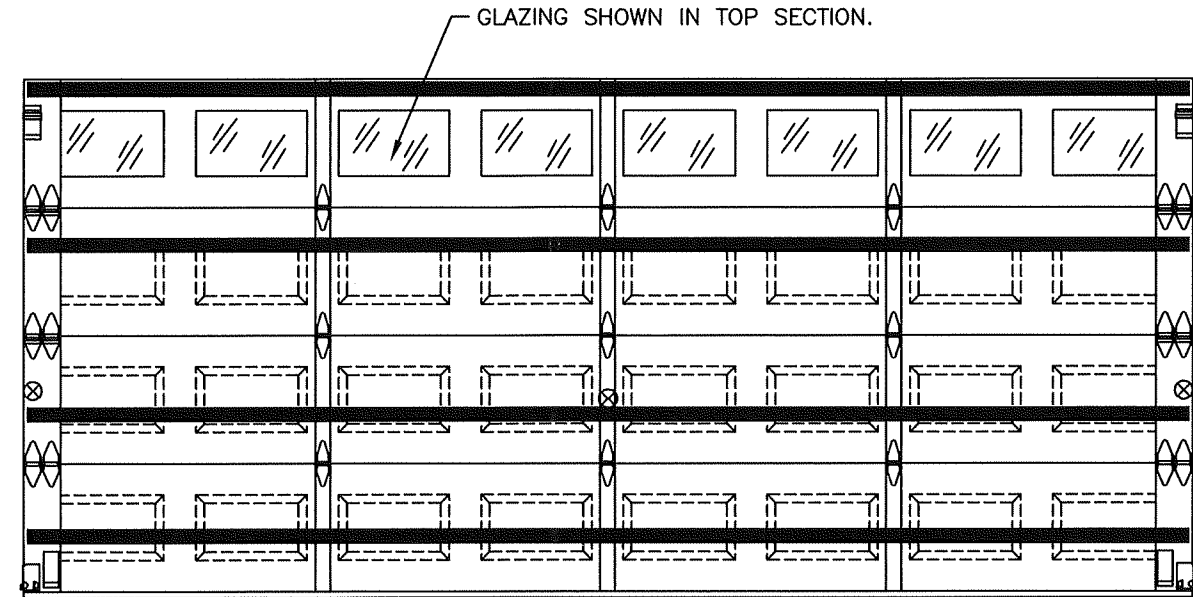
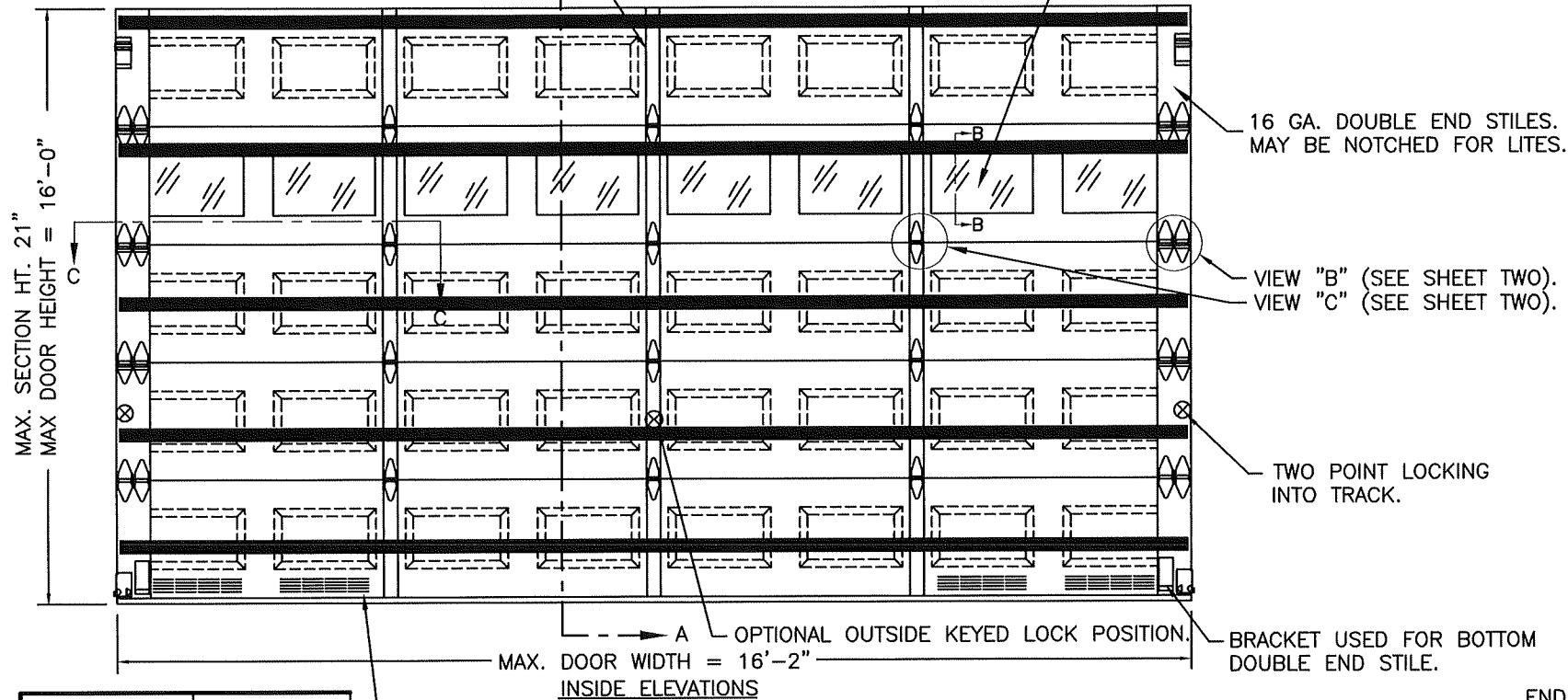
SHEET:  
1 OF 3

REVISIONS					DESCRIPTION
REV. NO.	ZONE:	DATE:	ECN NO.	APPVD:	
07	-	9/7/23	-	JDW/MWW	COMPLIANCE STATEMENT TO 8TH ED. & UPDATE JAMB ATTACHMENT

OPTIONAL ROW OF IMPACT-RESISTANT GLAZING.  
MAX. GLAZING SIZE IS 19-1/2" x 12".  
GLAZING IS INJECTION MOLDED GE LEXAN SLX2432T, AN APPROVED CC2 PLASTIC IN ACCORDANCE WITH IBC/FBC 2606.  
SEE SECTION B-B FOR ASSEMBLY DETAILS.  
(GLAZING SHOWN IN INTERMEDIATE SECTION.)

**IMPACT-RESISTANT CONSTRUCTION:**  
SOLID DOORS (NO GLAZING) OR DOORS WITH OPTIONAL IMPACT-RESISTANT GLAZING ARE IMPACT-RESISTANT. OPTIONAL MAX WINDOW SIZE 19-1/2"x12" INJECTION-MOLDED POLYCARBONATE FRONT FRAME AND GLAZING IS GE LEXAN SLX2432T, AN APPROVED CC2 PLASTIC IN ACCORDANCE WITH IBC/FBC 2606.  
THE ENTIRE DOOR ASSEMBLY INSTALLED IN COMPLIANCE WITH THIS SECTION MEETS THE WIND LOAD REQUIREMENTS OF THE FLORIDA BUILDING CODE AND INTERNATIONAL BUILDING CODE AND IS LARGE- AND SMALL-MISSILE IMPACT RESISTANT.

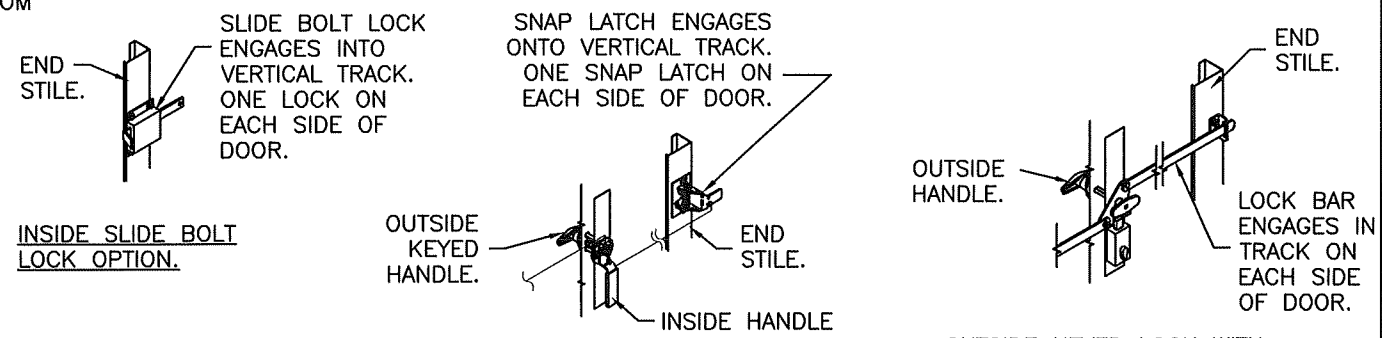
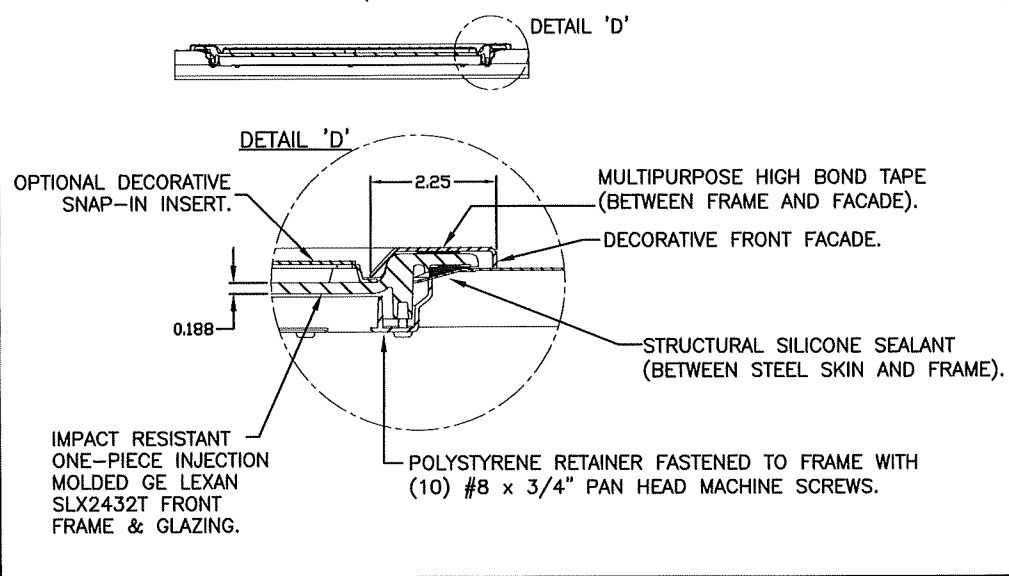
(1) 20 GA. BACKER PLATE BETWEEN EACH EMBOSS LOCATION THAT CONTAINS A CENTER HINGE. ATTACHED WITH DOUBLE SIDED ACRYLIC ADHESIVE TO BACK OF DOOR.



DOOR HEIGHT	# OF SECTIONS
UP TO 7'0"	4
7'3" TO 8'9"	5
9'0" TO 10'6"	6
10'9" TO 12'3"	7
12'6" TO 14'0"	8
14'3" TO 15'9"	9
16'0"	10
MAX SECTION HEIGHT: 21'	

LOCATION OF OPTIONAL VENTS. TOTAL VENT OPENINGS: 60 IN<sup>2</sup> PER VEHICLE.  
VENTS SHALL BE IN ACCORDANCE WITH CLOPAY DRAWING 101845.

**SECTION B-B (IMPACT-RESISTANT GLAZING OPTION)**



**PRODUCT REVISED**  
as complying with the Florida Building Code  
NOA-No. 23-1026.02  
Expiration Date 01/31/2029  
By *[Signature]*  
Miami-Dade Product Control

THIS PRODUCT CONFORMS TO THE REQUIREMENTS OF 7TH AND 8TH EDITION OF THE FLORIDA BUILDING CODE

DESIGN LOADS: +46.0 P.S.F. & -52.0 P.S.F.

Unless Stated Otherwise TOLERANCES are  
.0 = ±.031  
.00 = ±.015  
.000 = ±.005  
.0000 = ±.001  
Degrees = ±1/2'  
Unless Stated Otherwise DIMENSIONS ARE IN INCHES.

**Clopay CORPORATION**  
8585 Duke Boulevard  
Mason, OH 45040 USA  
Tel. No. 513-770-4800  
Fax No. 513-770-4853

PART NO.: N/A  
WINDLOAD RATING  
**W8 DP46**

DESCRIPTION: 2" EPS INS. 16' DOORS (SEE TABLE FOR MODELS)  
DRAWN BY: SH DATE: 10/12/12 SCALE: NTS DWG. NO.: 104736  
CHECKED BY: SH DATE: 10/26/12 SHEET 1 OF 3 SIZE B  
VER: MD

MARK WESTERFIELD  
STATE OF FLORIDA  
LICENSE NO. 48495  
DESIGN ENGINEER  
MARK WESTERFIELD, P.E.  
FLORIDA LICENSE No. 48495



MODELS	24 GA SHORT	27 GA SHORT	27 GA FLUSH	27 GA LONG
CLOPAY	4400, 4401	4300, HDG	4301, HDGF	4310, HDGL
HOLMES	--	66, 66G, 6200	68, 6201	67, 67G, 6203
IDEAL	--	SP200	SF200	SE200

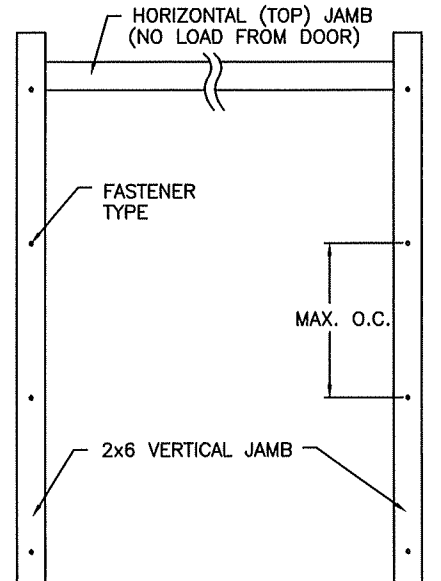
SHEET:	2 OF 3				
REV. NO.	ZONE:	DATE:	ECN NO.	APPVD:	DESCRIPTION
07	-	--	-	--	SEE REVISION HISTORY ON SHEET ONE.

**JAMB TO SUPPORTING STRUCTURE ATTACHMENT**

- NOTES:**
1. ALL THE LOAD FROM THE DOOR IS TRANSFERRED TO THE TRACK AND THEN FROM THE TRACK TO THE 2x6 VERTICAL SYP (GRADE #2 OR BETTER) JAMBS. NO LOAD FROM THE DOOR IS TRANSFERRED TO THE HORIZONTAL (TOP) JAMB.
  2. EACH VERTICAL JAMB SEES A MAXIMUM DESIGN LOAD OF +368 LB & -416 LB. PER LINEAR FOOT OF JAMB.
  3. ALL JAMB FASTENERS MAY BE (BUT ARE NOT REQUIRED TO BE) COUNTERSUNK TO PROVIDE A FLUSH MOUNTING SURFACE.
  4. A 1/3 STRESS INCREASE FOR WIND LOAD WAS NOT USED IN THE CALCULATION OF ALLOWABLE LOADS FOR ANCHORS AND FASTENERS FOR STEEL, CONCRETE AND MASONRY.

**WOOD FRAME BUILDINGS**  
 STUD WALLS OF DOOR OPENING SHALL BE FRAMED SOLID BY NOT LESS THAN (3) 2x6 PRESSURE TREATED SYP (GRADE #2 OR BETTER) WOOD STUDS OF A STRESS GRADE NOT LESS THAN 1200 PSI NOMINAL EXTREME FIBER STRESS IN BENDING (F<sub>b</sub>) FOR DOORS UP TO 8'0" HIGH OR (4) 2x6 PRESSURE TREATED SYP (GRADE #2 OR BETTER) WOOD STUDS OF A STRESS GRADE NOT LESS THAN 1200 PSI NOMINAL EXTREME FIBER STRESS IN BENDING (F<sub>b</sub>) FOR DOORS UP TO 16'0" HIGH. STUD WALLS TO BE CONTINUOUS FROM FOOTING TO TIE BEAMS.

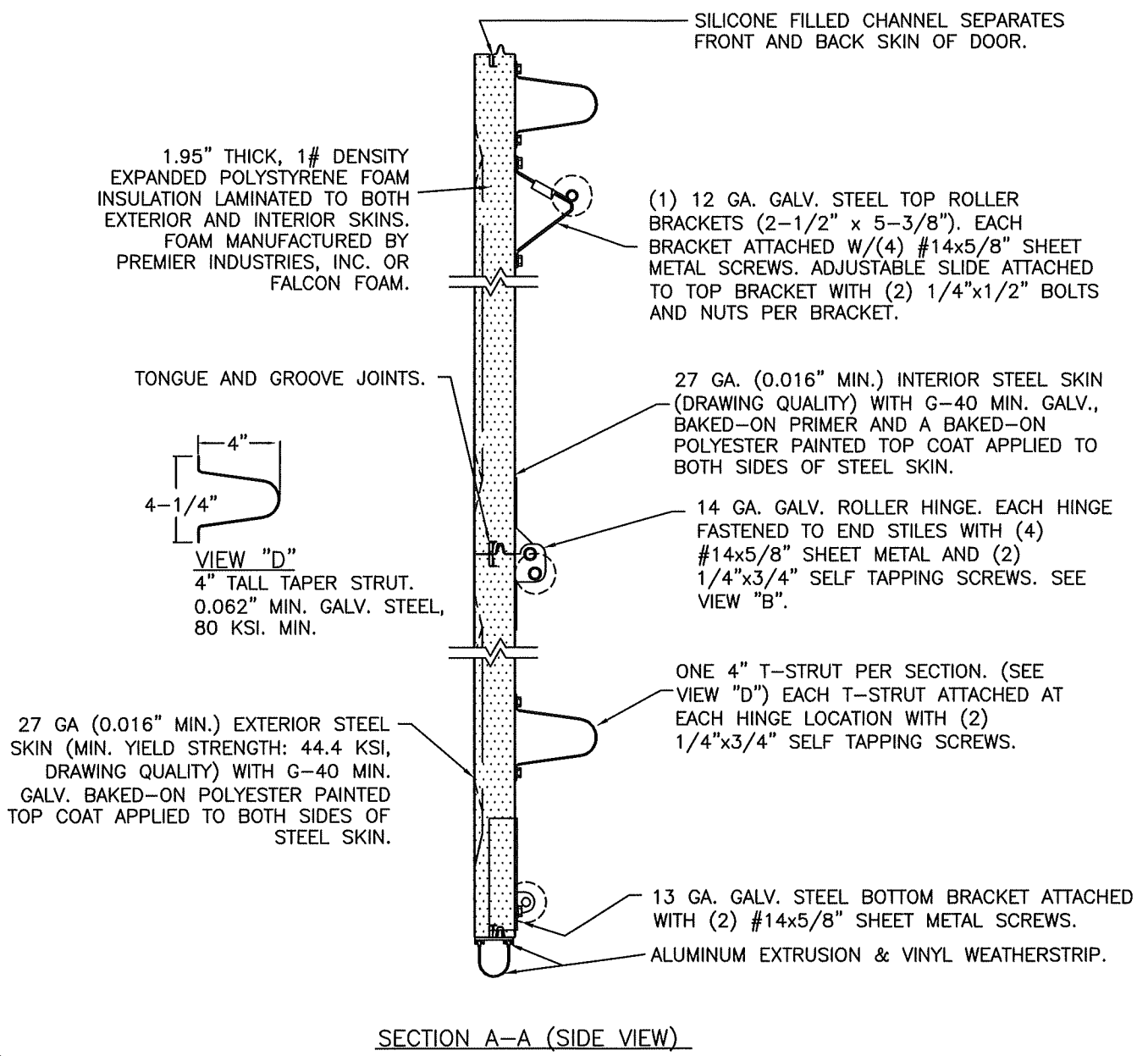
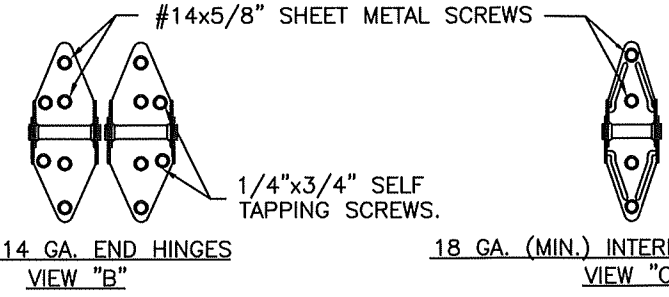
**BLOCK WALL OR CONCRETE**  
 2x6 SYP (GRADE #2 OR BETTER) WOOD JAMB SHALL BE ANCHORED TO GROUT REINFORCED BLOCK WALL OR CONCRETE COLUMN. BLOCK WALL CELLS SHALL BE FILLED WITH CONCRETE AND REINFORCED WITH REINFORCING BARS EXTENDING INTO THE FOOTING AND INTO TIE BEAMS. ALL BARS SHALL BE CONTINUOUS FROM THE TIE BEAMS TO FOOTING PER BLOCK WALL OR CONCRETE COLUMN. BLOCK WALLS AND CONCRETE COLUMNS TO BE DESIGNED BY THE BUILDING ENGINEER OR ARCHITECT OF RECORD AND IN ACCORDANCE WITH THE FLORIDA BUILDING CODE.



**2x6 JAMB TO SUPPORTING STRUCTURE ATTACHMENT**  
 (NOT TO BE USED FOR ATTACHMENT OF TRACK ANGLE TO 2x6 VERTICAL JAMBS OR SUPPORTING STRUCTURE)

BUILDING TYPE	FASTENER TYPE	MAXIMUM ON-CENTER DISTANCE BETWEEN FASTENERS*	STEEL WASHERS REQUIRED?
BLOCK WALL	1/4" x 1-1/4" MIN. EMBED CARBON STEEL CONCRETE ANCHOR	5-3/4"	1" O.D.
GROUT-FILLED CMU	1/4" x 1-3/4" MIN. EMBED CARBON STEEL CONCRETE ANCHOR	12"	1" O.D.
2000 PSI MIN. CONCRETE	1/4" X 1-3/4" MIN. EMBED TAPCON CARBON STEEL CONCRETE ANCHOR	14-1/4"	INCLUDED
4000 PSI MIN. CONCRETE	1/4" X 1-3/4" MIN. EMBED TAPCON CARBON STEEL CONCRETE ANCHOR	19"	INCLUDED
2500 PSI MIN. CONCRETE	3/8" X 3" NOMINAL EMBED HILTI KWIK BOLT T22 CONCRETE ANCHOR	24"	1-1/2" O.D.
WOOD FRAME (SYP 0.55 SG)	1/2" x 3" LAG SCREW (ASTM A307, GRADE A) 1-5/8" EMBED INTO STRUCTURE	14-3/4"	1" O.D.

\* FIRST (BOTTOM) ANCHOR STARTING AT NO MORE THAN HALF OF THE MAXIMUM ON-CENTER DISTANCE. HIGHEST ANCHOR INSTALLED AT LEAST AS HIGH AS THE DOOR OPENING.  
 CLOPAY DOES NOT SUPPLY JAMB ATTACHMENT FASTENERS.  
 MINIMUM DISTANCE BETWEEN CENTER OF ANCHOR AND EDGE OF CONCRETE BLOCK: 2-1/2", EXCLUDING STUCCO THICKNESS.



**DESIGN ENGINEER:**  
 MARK WESTERFIELD, P.E.  
 FLORIDA LICENSE No. 48495

**PRODUCT REVISED**  
 as complying with the Florida Building Code  
 NOA-No. 23-1026.02  
 Expiration Date 01/31/2029  
 By *[Signature]*  
 Miami-Dade Product Control

DESIGN LOADS: +46.0 P.S.F. & -52.0 P.S.F.	PART NO.: N/A
Unless Stated Otherwise TOLERANCES are .0 = ±.031 .00 = ±.015 .000 = ±.005 .0000 = ±.001 Degrees = ±1/2° Unless Stated Otherwise DIMENSIONS ARE IN INCHES.	<b>Clopay CORPORATION</b> 8585 Duke Boulevard Mason, OH 45040 USA Tel. No. 513-770-4800 Fax No. 513-770-4853
DRAWN BY: SH CHECKED BY: SH DWG. NO.: 104736	WINDLOAD RATING <b>W8 DP46</b> DESCRIPTION: 2" EPS INS. 16' DOORS (SEE TABLE FOR MODELS) DATE: 10/12/12 DATE: 10/26/12 SCALE: NTS SHEET 2 OF 3 VER: MD

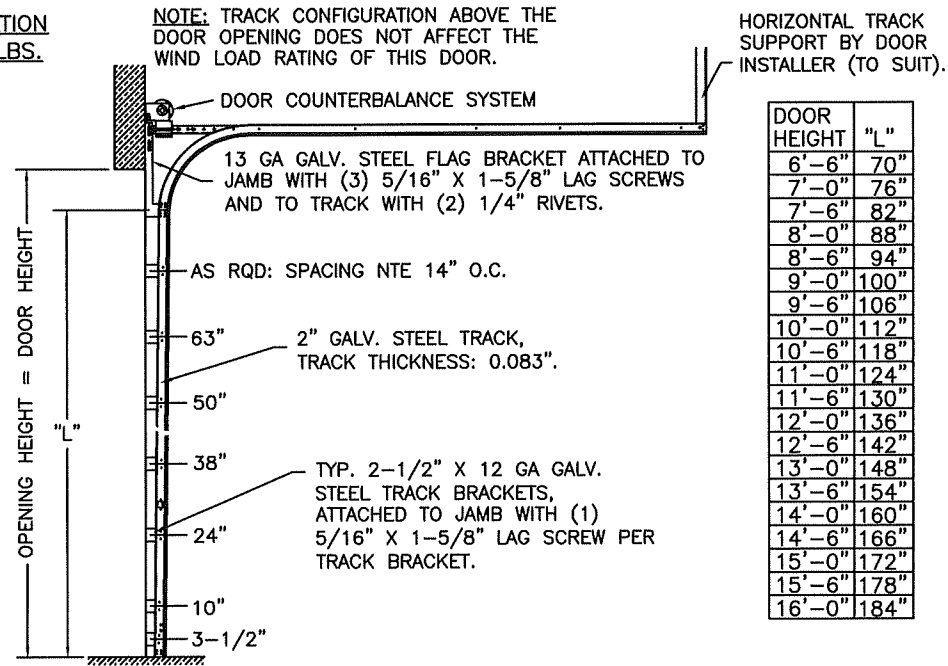
MODELS	24 GA SHORT	27 GA SHORT	27 GA FLUSH	27 GA LONG
CLOPAY	4400, 4401	4300, HDG	4301, HDGF	4310, HDGL
HOLMES	--	66, 66G, 6200	68, 6201	67, 67G, 6203
IDEAL	--	SP200	SF200	SE200

SHEET:  
3 OF 3

REVISIONS					
REV. NO.	ZONE	DATE	ECN NO.	APPVD:	DESCRIPTION
07	-	--	-	-	SEE REVISION HISTORY ON SHEET ONE.

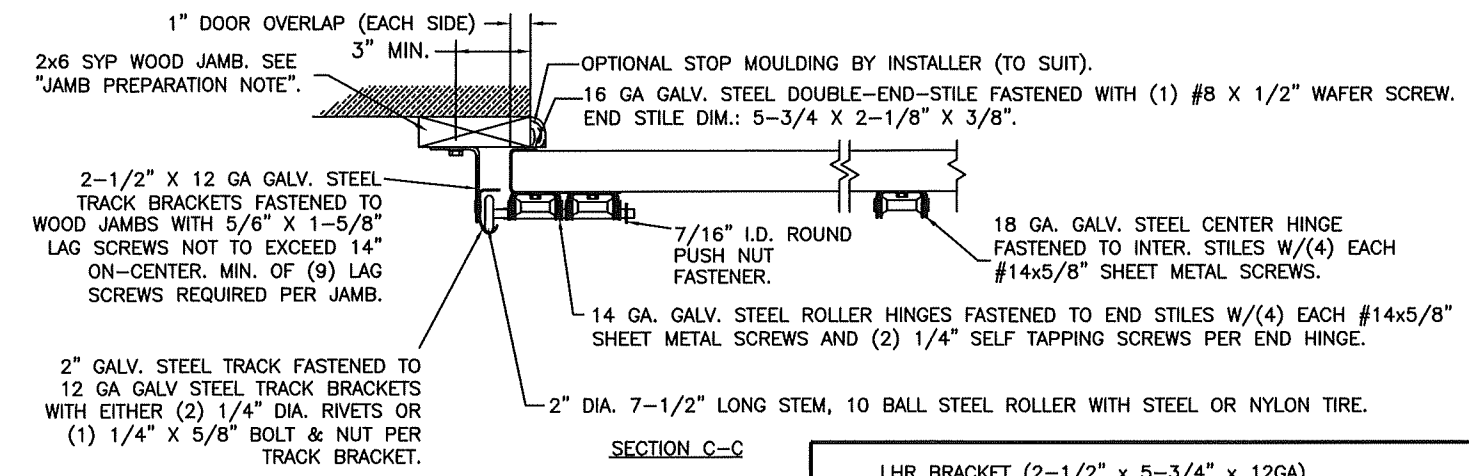
D  
C  
B  
A

**2" TRACK CONFIGURATION**  
DOORS UP TO 800 LBS.



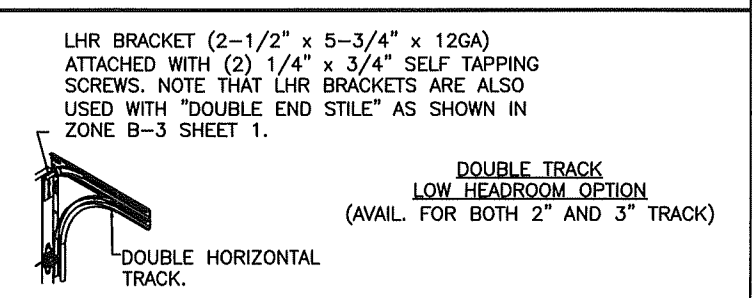
DOOR HEIGHT "L"	"L"
6'-6"	70"
7'-0"	76"
7'-6"	82"
8'-0"	88"
8'-6"	94"
9'-0"	100"
9'-6"	106"
10'-0"	112"
10'-6"	118"
11'-0"	124"
11'-6"	130"
12'-0"	136"
12'-6"	142"
13'-0"	148"
13'-6"	154"
14'-0"	160"
14'-6"	166"
15'-0"	172"
15'-6"	178"
16'-0"	184"

**JAMB CONFIGURATION**  
DOORS UP TO 800 LBS.

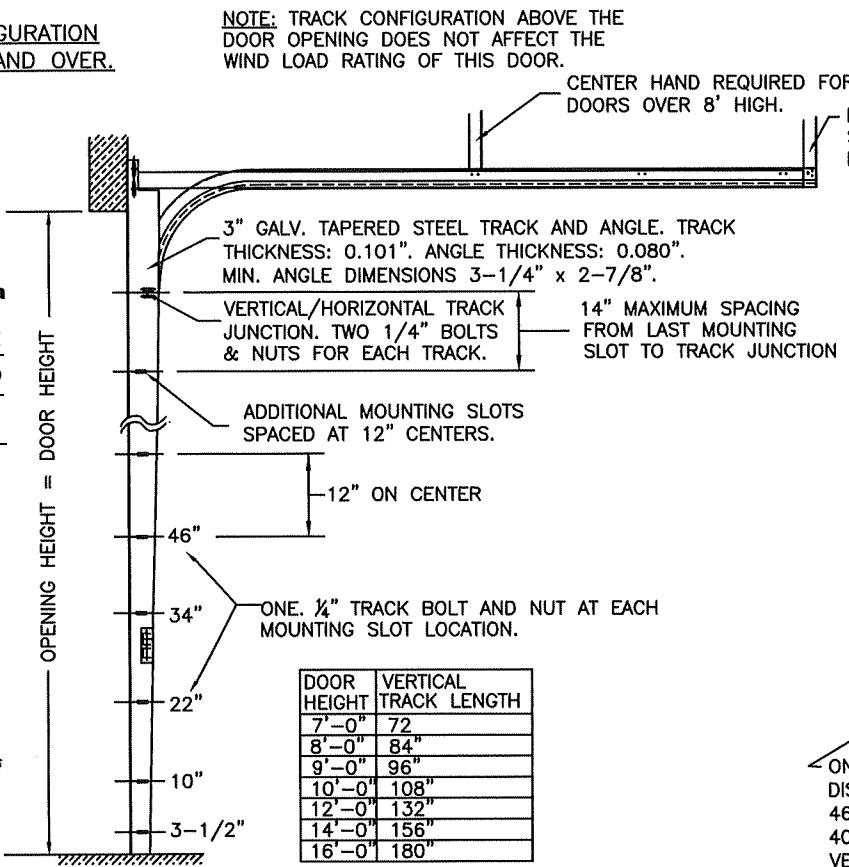


SECTION C-C

PREPARATION OF JAMBS BY OTHERS.

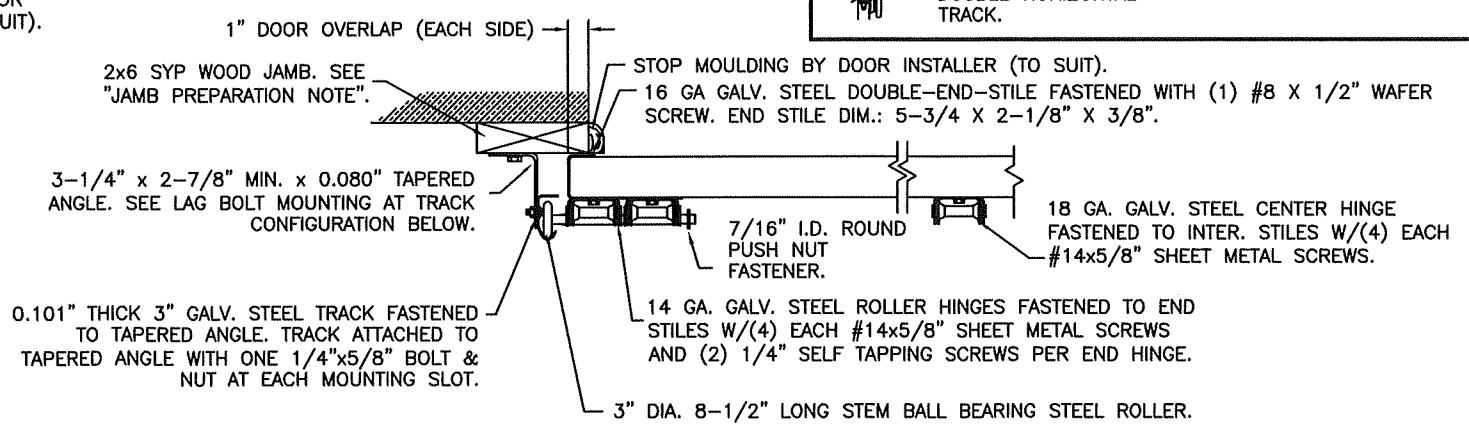


**3" TRACK CONFIGURATION**  
DOORS 800 LBS AND OVER.



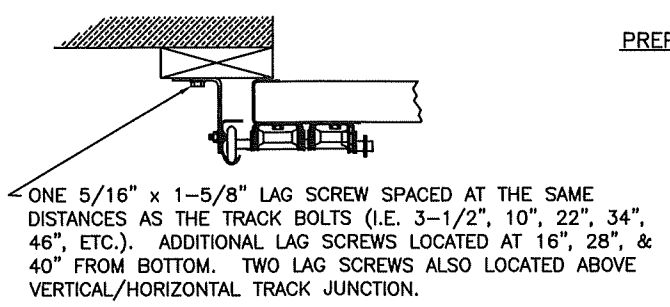
DOOR HEIGHT	VERTICAL TRACK LENGTH
7'-0"	72"
8'-0"	84"
9'-0"	96"
10'-0"	108"
12'-0"	132"
14'-0"	156"
16'-0"	180"

**JAMB CONFIGURATION**  
DOORS 800 LBS AND OVER.



SECTION C-C

PREPARATION OF JAMBS BY OTHERS.



**PRODUCT REVISED**  
as complying with the Florida Building Code  
NOA-No. 23-1026.02  
Expiration Date 01/31/2029  
By Miami-Dade Product Control

DESIGN ENGINEER  
MARK WESTERFIELD  
FLORIDA LICENSE No. 48495

DESIGN LOADS: +46.0 P.S.F. & -52.0 P.S.F.

Unless Stated Otherwise TOLERANCES are:  
.0 = ±.031  
.00 = ±.015  
.000 = ±.005  
.0000 = ±.001  
Degrees = ±1/2'

Unless Stated Otherwise DIMENSIONS ARE IN INCHES.

**Glopay CORPORATION**  
8585 Duke Boulevard  
Mason, OH 45040 USA  
Tel. No. 513-770-4800  
Fax No. 513-770-4853

PART NO.: N/A  
WINDLOAD RATING  
**W8 DP46**

DESCRIPTION: 2" EPS INS. 16' DOORS (SEE TABLE FOR MODELS)

DRAWN BY: SH	DATE: 10/12/12	SCALE: NTS	DWG. SIZE B
CHECKED BY: SH	DATE: 10/26/12	SHEET 3 OF 3	
DWG. NO.: 104736	VER: MD		

4 | 3 | 2 | 1