



DEPARTMENT OF REGULATORY AND ECONOMIC RESOURCES (RER)
BOARD AND CODE ADMINISTRATION DIVISION

MIAMI-DADE COUNTY
PRODUCT CONTROL SECTION
11805 SW 26 Street, Room 208
Miami, Florida 33175-2474
T (786) 315-2590 F (786) 315-2599
www.miamidade.gov/economy

NOTICE OF ACCEPTANCE (NOA)

Willard Shutter Company, Inc.
4420 NW 35th Court.
Miami, FL 33142

SCOPE: This NOA is being issued under the applicable rules and regulations governing the use of construction materials. The documentation submitted has been reviewed and accepted by Miami-Dade County RER-Product Control Section to be used in Miami Dade County and other areas where allowed by the Authority Having Jurisdiction (AHJ).

This NOA shall not be valid after the expiration date stated below. The Miami Dade County Product Control Section (in Miami-Dade County) and/or the AHJ (in areas other than Miami Dade County) reserve the right to have this product or material tested for quality assurance purposes. If this product or material fails to perform in the accepted manner, the manufacturer will incur the expense of such testing and the AHJ may immediately revoke, modify, or suspend the use of such product or material within their jurisdiction. RER reserves the right to revoke this acceptance, if it is determined by Miami-Dade County Product Control Section that this product or material fails to meet the requirements of the applicable building code.

This product is approved as described herein and has been designed to comply with the High Velocity Hurricane Zone of the Florida Building Code.

DESCRIPTION: The Islander Bahama Louver.

APPROVAL DOCUMENT: Drawing No. 23-160, titled "The Islander Bahama Louver" sheets 1 through 5 of 5, prepared by PPMF, Inc., dated 09/05/2023, signed and sealed by Pedro De Figueiredo, P.E., on 09/06/2023, bearing the Miami-Dade County Product Control Revision stamp with the Notice of Acceptance number and the expiration date by the Miami-Dade County Product Control Section.

MISSILE IMPACT RATING: None

LABELING: Each unit shall bear a permanent label with the manufacturer's name or logo, city, state and the following statement: "Miami-Dade County Product Control Approved", unless otherwise noted herein.

RENEWAL of this NOA shall be considered after a renewal application has been filed and there has been no change in the applicable building code negatively affecting the performance of this product.

TERMINATION of this NOA will occur after the expiration date or if there has been a revision or change in the materials, use, and/or manufacture of the product or process. Misuse of this NOA as an endorsement of any product, for sales, advertising or any other purposes shall automatically terminate this NOA. Failure to comply with any section of this NOA shall be cause for termination and removal of NOA.

ADVERTISEMENT: The NOA number preceded by the words Miami-Dade County, Florida, and followed by the expiration date may be displayed in advertising literature. If any portion of the NOA is displayed, then it shall be done in its entirety.

INSPECTION: A copy of this entire NOA shall be provided to the user by the manufacturer or its distributors and shall be available for inspection at the job site at the request of the Building Official.

This NOA **revises and renews** NOA #20-0630.19 and consists of this page 1, evidence submitted pages E-1, E-2, E-3, E-4, E-5, E-6 and E-7 as well as approval document mentioned above.

The submitted documentation was reviewed by **Helmy A. Makar, P.E., M.S.**



Helmy A. Makar
02/15/24

NOA No. 23-1026.11
Expiration Date: 03/27/2029
Approval Date: 02/15/2024
Page 1

Willard Shutter Company, Inc.

NOTICE OF ACCEPTANCE: EVIDENCE SUBMITTED

1. EVIDENCE SUBMITTED UNDER PREVIOUS APPROVAL # 02-0621.08

A. DRAWINGS

1. *Drawing No. 02-045R2, titled "The Islander Bahama Louver" dated 12/30/02 with last revision on 01/29/03, prepared by EngCo, Inc, signed and sealed by P. De Figueiredo PE.*

B. TESTS

1. *Test report on Air Pressure Test per PA 202 of "Willard: Louvered Bahama Architectural Fixture: FBC", prepared by Construction Testing Corporation, report No. 02-049, dated 12/21/02, signed and sealed by Y. G. Kuri PE.*
2. *Test report on Air Pressure Test per PA 202 of "Bahama Shades", prepared by Construction Testing Corporation, report No. 02-004, dated 03/12/02, signed and sealed by C. G. Tyson, PE.*

C. CALCULATION

1. *Product Evaluation and Anchor Verification of Sunshades (Louvers) prepared by EngCo, Inc. on 05/24/02, signed and sealed by P. De Figueiredo, PE.*

D. STATEMENTS.

1. *Letter of Code Compliance and No-Financial Interest issued by Engco, Inc., on 01/06/03, signed and sealed by P. De Figueiredo, PE.*
2. *Letter of Code Compliance and No-Financial Interest issued by William Shutter Company Inc., on 01/07/03, signed and sealed by W. E. Clark.*

E. MATERIAL CERTIFICATION

N/A


2. EVIDENCE SUBMITTED UNDER PREVIOUS APPROVAL # 05-0822.07

A. DRAWINGS

1. *Drawings prepared by EngCo, Inc. titled "The Islander Bahama Louver", Drawing No. 05-267, sheets 1 to 4 of 4, dated 08/17/05 with no revisions signed and sealed by P. De Figueiredo, P.E.*

B. TESTS

1. *Test report on Air Pressure Test per PA 202 of "Willard: Louvered Bahama Architectural Fixture: FBC", prepared by Construction Testing Corporation, report No. 02-049, dated 12/21/02, signed and sealed by Y. G. Kuri PE.*
2. *Test report on Air Pressure Test per PA 202 of "Bahama Shades", prepared by Construction Testing Corporation, report No. 02-004, dated 03/12/02, signed and sealed by C. G. Tyson, PE.*



Helmy A. Makar, P.E., M.S.
Product Control Section Supervisor
NOA No. 23-1026.11
Expiration Date: 03/27/2029
Approval Date: 02/15/2024

Willard Shutter Company, Inc.

NOTICE OF ACCEPTANCE: EVIDENCE SUBMITTED

C. CALCULATION

1. *Product Evaluation and Anchor Verification of Sunshades (Louvers) prepared by EngCo, Inc. on 05/24/02, signed and sealed by P. De Figueiredo, PE.*

D. QUALITY ASSURANCE

1. *By Miami-Dade County Building Code Compliance Office.*

E. STATEMENTS.

1. *Letter of Code Compliance and No-Financial Interest issued by Engco, Inc., on 01/06/03, signed and sealed by P. De Figueiredo, P.E.*
2. *Letter of Code Compliance and No-Financial Interest issued by William Shutter Company Inc., on 01/07/03, signed and sealed by W. E. Clark.*
3. *Letter of Code Compliance issued by EngCo, Inc., on 08/17/05, signed and sealed by P. De Figueiredo, P.E.*

3. EVIDENCE SUBMITTED UNDER PREVIOUS APPROVAL # 07-1219.08

A. DRAWINGS

1. *None.*

B. TESTS

1. *None.*

C. CALCULATIONS

1. *None.*

D. QUALITY ASSURANCE

1. *By Miami-Dade County Building Code Compliance Office.*

E. MATERIAL CERTIFICATIONS

1. *None.*

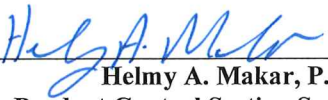
4. EVIDENCE SUBMITTED UNDER PREVIOUS APPROVAL # 09-0528.02

A. DRAWINGS

1. *Drawing No. 09-044, titled "The Islander Bahama Louver" sheets 1 through 5 of 5, prepared by EngCo, Inc., dated May 01, 2009, signed and sealed by Pedro De Figueiredo, P.E., on September 17, 2009.*

B. TESTS

1. *None.*



Helmy A. Makar, P.E., M.S.
Product Control Section Supervisor
NOA No. 23-1026.11
Expiration Date: 03/27/2029
Approval Date: 02/15/2024

Willard Shutter Company, Inc.

NOTICE OF ACCEPTANCE: EVIDENCE SUBMITTED

C. CALCULATIONS

1. *Product Evaluation and Anchor Verification of Sunshades (Louvers) prepared by EngCo, Inc. on 05/05/09, to comply with the FBC 2007, signed and sealed by P. De Figueiredo, P.E.*

D. QUALITY ASSURANCE

1. *By Miami-Dade County Building Code Compliance Office.*

E. MATERIAL CERTIFICATIONS

1. *None.*

F. STATEMENTS.

1. *Letter of Code Compliance with the FBC 2007 and No-Financial Interest issued by Engco, Inc., on 05/05/09, signed and sealed by P. De Figueiredo, P.E.*

5. EVIDENCE SUBMITTED UNDER PREVIOUS APPROVAL #12-0201.06

A. DRAWINGS

1. *Drawing No. 12-009, titled "The Islander Bahama Louver" sheets 1 through 5 of 5, prepared by EngCo, Inc., dated January 25, 2012, signed and sealed by Pedro De Figueiredo, P.E., on April 09, 2012.*

B. TESTS

1. *None.*

C. CALCULATIONS

1. *None.*

D. QUALITY ASSURANCE


1. *By Miami-Dade County Department of Permitting, Environment, and Regulatory Affairs (PERA).*

E. MATERIAL CERTIFICATIONS

1. *None.*

F. STATEMENTS.

1. *Letter of Code Compliance with the FBC 2010 and No-Financial Interest issued by Engco, Inc., on 01/25/12, signed and sealed by P. De Figueiredo, P.E.*



Helmy A. Makar, P.E., M.S.
Product Control Section Supervisor
NOA No. 23-1026.11
Expiration Date: 03/27/2029
Approval Date: 02/15/2024

Willard Shutter Company, Inc.

NOTICE OF ACCEPTANCE: EVIDENCE SUBMITTED

6. EVIDENCE SUBMITTED UNDER PREVIOUS APPROVAL # 13-0219.06

A. DRAWINGS

1. *None.*

B. TESTS

1. *None.*

C. CALCULATIONS

1. *None.*

D. QUALITY ASSURANCE

1. *By Miami-Dade County Department of Regulatory and Economic Resources.*

E. MATERIAL CERTIFICATIONS

1. *None.*

F. STATEMENTS.

1. *Letter of Code Compliance with the FBC 2010 and request for one year renewal issued by Engco, Inc., on 02/08/13, signed and sealed by P. De Figueiredo, P.E.*

7. EVIDENCE SUBMITTED UNDER PREVIOUS APPROVAL #14-0129.12

A. DRAWINGS

1. *None.*

B. TESTS

1. *Test report on Air Pressure Test per PA 202 of "Aluminum Louver", prepared by Fenestration Testing Laboratory, Inc., report No. 7613, dated 12/30/13, signed and sealed by Marlin Brinson, P.E.*

C. CALCULATIONS

1. *None.*

D. QUALITY ASSURANCE

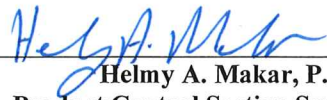
1. *By Miami-Dade County Department of Regulatory and Economic Resources.*

E. MATERIAL CERTIFICATIONS

1. *None.*

F. STATEMENTS.

1. *None.*



Helmy A. Makar, P.E., M.S.
Product Control Section Supervisor
NOA No. 23-1026.11
Expiration Date: 03/27/2029
Approval Date: 02/15/2024

Willard Shutter Company, Inc.

NOTICE OF ACCEPTANCE: EVIDENCE SUBMITTED

8. EVIDENCE SUBMITTED UNDER PREVIOUS APPROVAL #15-0706.05

A. DRAWINGS

1. *Drawing No. 15-183, titled "The Islander Bahama Louver" sheets 1 through 5 of 5, prepared by EngCo, Inc., dated June 16, 2015, signed and sealed by Pedro De Figueiredo, P.E., on June 21, 2015.*

B. TESTS

1. *None.*

C. CALCULATIONS

1. *Anchor Verification of Sunshades (Louvers) prepared by EngCo, Inc. on 06/21/15, comply with the FBC 2014, signed & sealed by P. De Figueiredo, PE.*

D. QUALITY ASSURANCE

1. *By Miami-Dade County Department of Regulatory and Economic Resources.*

E. MATERIAL CERTIFICATIONS

1. *None.*

F. STATEMENTS.

1. *Letter of Code Compliance with the FBC 2014 issued by Engco, Inc., on 06/17/15, signed and sealed by Pedro De Figueiredo, P.E.*

9. EVIDENCE SUBMITTED UNDER PREVIOUS APPROVAL #18-0206.07

A. DRAWINGS

1. *Drawing No. 18-054, titled "The Islander Bahama Louver" sheets 1 through 5 of 5, prepared by PPMF, Inc., dated January 31, 2018, signed and sealed by Pedro De Figueiredo, P.E., on January 31, 2018.*

B. TESTS

1. *None.*

C. CALCULATIONS

1. *None.*

D. QUALITY ASSURANCE


1. *By Miami-Dade County Department of Regulatory and Economic Resources.*

E. MATERIAL CERTIFICATIONS

1. *None.*

F. STATEMENTS.

1. *Letter of Code Compliance with the FBC 2017 issued by PPMF, Inc., on 01/31/18, signed and sealed by Pedro De Figueiredo, P.E.*



Helmy A. Makar, P.E., M.S.
Product Control Section Supervisor
NOA No. 23-1026.11
Expiration Date: 03/27/2029
Approval Date: 02/15/2024

Willard Shutter Company, Inc.

NOTICE OF ACCEPTANCE: EVIDENCE SUBMITTED

10. EVIDENCE SUBMITTED UNDER PREVIOUS APPROVAL #18-1211.04

A. DRAWINGS

1. *None.*

B. TESTS

1. *None.*

C. CALCULATIONS

1. *None.*

D. QUALITY ASSURANCE

1. *By Miami-Dade County Department of Regulatory and Economic Resources.*

E. MATERIAL CERTIFICATIONS

1. *None.*

F. STATEMENTS.

1. *Letter of Code Compliance with the FBC 2017 issued by PPMF, Inc., on 12/07/18, signed and sealed by Pedro De Figueiredo, P.E.*

11. EVIDENCE SUBMITTED UNDER PREVIOUS APPROVAL #20-0630.19

A. DRAWINGS

1. *Drawing No. 20-070, titled "The Islander Bahama Louver" sheets 1 through 5 of 5, prepared by PPMF, Inc., dated June 21, 2020, signed and sealed by Pedro De Figueiredo, P.E., on June 21, 2020.*

B. TESTS

1. *None.*

C. CALCULATIONS

1. *None.*

D. QUALITY ASSURANCE


1. *By Miami-Dade County Department of Regulatory and Economic Resources.*

E. MATERIAL CERTIFICATIONS

1. *None.*

F. STATEMENTS.

1. *Letter of Code Compliance with the FBC 2020 issued by PPMF, Inc., on 06/21/20, signed and sealed by Pedro De Figueiredo, P.E.*



Helmy A. Makar, P.E., M.S.
Product Control Section Supervisor
NOA No. 23-1026.11
Expiration Date: 03/27/2029
Approval Date: 02/15/2024

Willard Shutter Company, Inc.

NOTICE OF ACCEPTANCE: EVIDENCE SUBMITTED

12. NEW EVIDENCE SUBMITTED

A. DRAWINGS

1. *Drawing No. 23-160, titled "The Islander Bahama Louver" sheets 1 through 5 of 5, prepared by PPMF, Inc., dated 09/05/2023, signed and sealed by Pedro De Figueiredo, P.E., on 09/06/2023.*

B. TESTS

1. *None.*

C. CALCULATIONS

1. *None.*

D. QUALITY ASSURANCE

1. *By Miami-Dade County Department of Regulatory and Economic Resources.*

E. MATERIAL CERTIFICATIONS

1. *None.*

F. STATEMENTS.

1. *Letter of Code Compliance with the FBC 2023 issued by PPMF, Inc., on 10/25/23, signed and sealed by Pedro De Figueiredo, P.E.*



Helmy A. Makar, P.E., M.S.
Product Control Section Supervisor
NOA No. 23-1026.11
Expiration Date: 03/27/2029
Approval Date: 02/15/2024

GENERAL NOTES:
(FLORIDA BUILDING CODE 2023 - 8th EDITION - HVHZ & non HVHZ)

- 1- DEFINITION: THIS PRODUCT IS A BAHAMAS LOUVER, TESTED UNDER TAS 202 & DESIGNED TO BE USED AS DECORATIVE CLADDING AND PROTECTIVE SUN SCREEN. THIS PRODUCT USE IS LIMITED TO THE ALLOWABLE DESIGNED PRESSURE STATED IN THIS APPROVAL AND MUST NOT BE USED AS AN APPROVED HURRICANE PROTECTION DEVICE.
- 2- CODE: THIS PRODUCT IS IN COMPLIANCE WITH THE FLORIDA BUILDING CODE 2023 - 8th EDITION.
- 3- POSTING: A PERMANENT LEGIBLE LABEL SHALL BE PLACED ON THE BACK OF THE BOTTOM FRAME STATING THE FOLLOWING:
- "WILLARD SHUTTERS - MIAMI - FLORIDA
THE ISLANDER BAHAMA LOUVER
DADE COUNTY PRODUCT CONTROL APPROVED"
- 4- LOADS: THE PROJECT DESIGN PRESSURES, PROVIDED BY A PROFESSIONAL ARCHITECT OR ENGINEER, AS DETERMINED FROM SECTION FBC I 620 AND ASCE 7-22 MUST BE MULTIPLIED BY 0.6 FACTOR. THE PROJECT DESIGN PRESSURES MUST NOT EXCEED THE PRODUCT ALLOWABLE PRESSURES AS PER TAS 202.
- 5- MATERIAL: ALL ALUMINUM EXTRUSIONS SHALL BE 6063-T5 OR AS INDICATED IN THIS SET OF DRAWINGS
- 6- FASTENERS: ASSEMBLY SCREWS AND ANCHORS SHALL BE AS SPECIFIED BY THE CURRENT SET OF DRAWINGS. INSTALLATION AND LOADS AS PER THIS APPROVAL. ANCHOR EMBEDMENT TO BASE MATERIAL SHALL BE BEYOND WALL DRESSING.
- 7- THE CONTRACTOR MUST VERIFY THE ADEQUACY OF THE EXISTING STRUCTURE IN SUSTAINING THE PRODUCT IMPOSED LOADS.
- 8- DISSIMILAR MATERIALS: WHERE ALUMINUM IS IN CONTACT OR FASTENED TO DISSIMILAR MATERIALS, INCLUDING BUT NOT LIMITED TO STEEL, INSTALLATION SHALL MEET THE REQUIREMENTS OF CHAPTER M.7 OF THE ALUMINUM DESIGN MANUAL 2020.

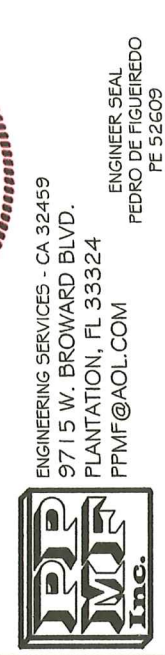
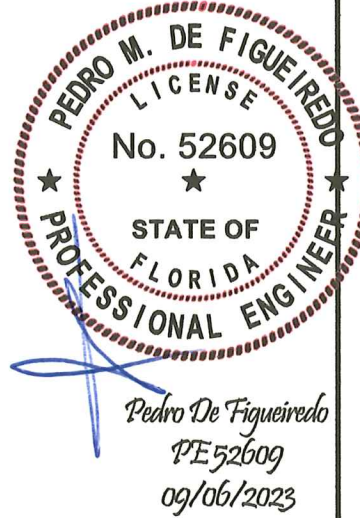
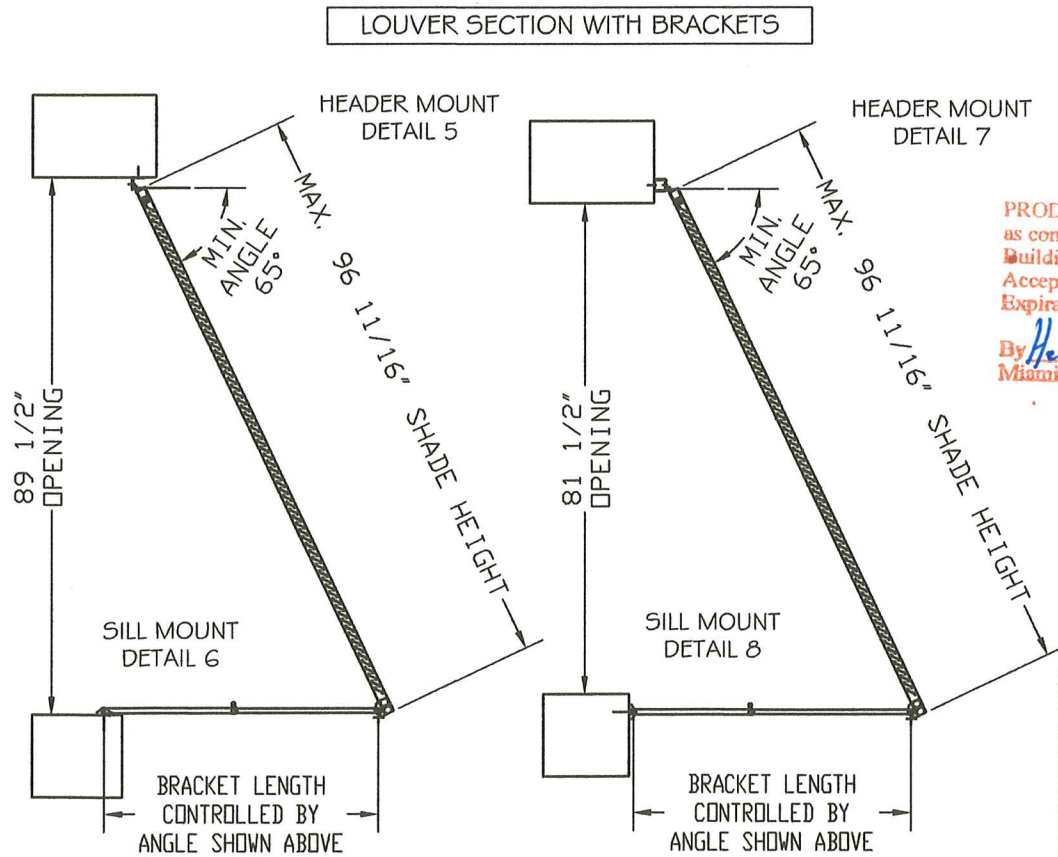
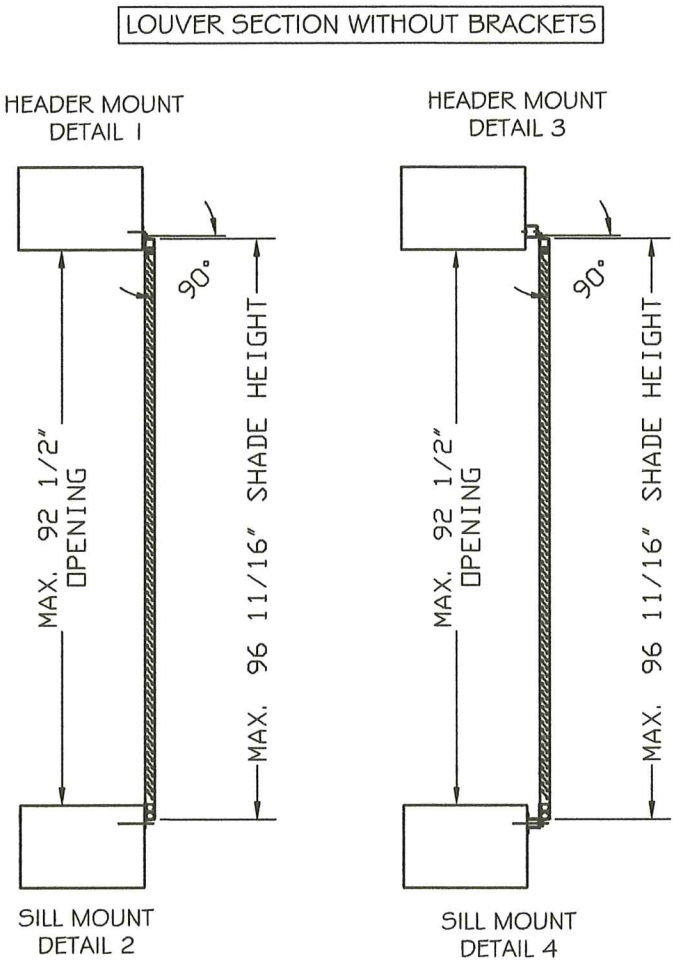
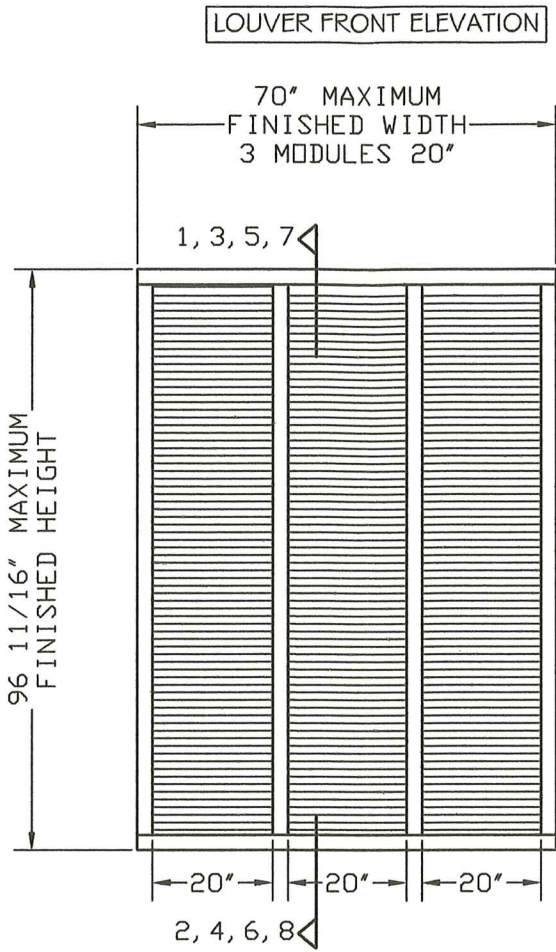
TABLE OF CONTENTS:

SHEET	DESCRIPTION
1	GENERAL NOTES & TYPICAL ELEVATIONS AND SECTIONS, ALLOWABLE PRESSURES
2	LOUVERS WITHOUT BRACKETS SECTIONS 1, 2, 3 AND 4
3	LOUVERS WITH BRACKETS SECTIONS 5, 6, 7 AND 8
4	LOUVER COMPONENTS
5	LOUVER ASSEMBLY

ALLOWABLE PRESSURES:

LOUVER HEIGHT	W/ BRACKET		W/O BRACKET	
	POS(+)	NEG(-)	POS(+)	NEG(-)
96 11/16"	+40.0	-35.0	+40.0	-40.0
72 1/2"	+52.0	-52.0	+55.5	-55.5
48 3/8"	+76.3	-76.3	+83.2	-90.1

NOTES:
1- USE OF LINEAR INTERPOLATION BETWEEN ABOVE VALUES IS ACCEPTABLE.
2- LOUVERS ARE TO BE INSTALLED IN LOCATION WHERE ROOM BEHIND THE LOUVER IS DESIGNED TO DRAIN WATER PENETRATING INTO THE ROOM AND THE ROOM WILL HOUSE WATER RESISTANT / WATER PROOF EQUIPMENT COMPONENTS OR SUPPLIES.



PRODUCT:
**THE ISLANDER
BAHAMA LOUVER**

MANUFACTURER:
**WILLARD
SHUTTER COMPANY, INC.**
3595 NW 46TH STREET
MIAMI, FL 33142
Tel.: (800) 826-4530
Fax.: (305) 638-8634

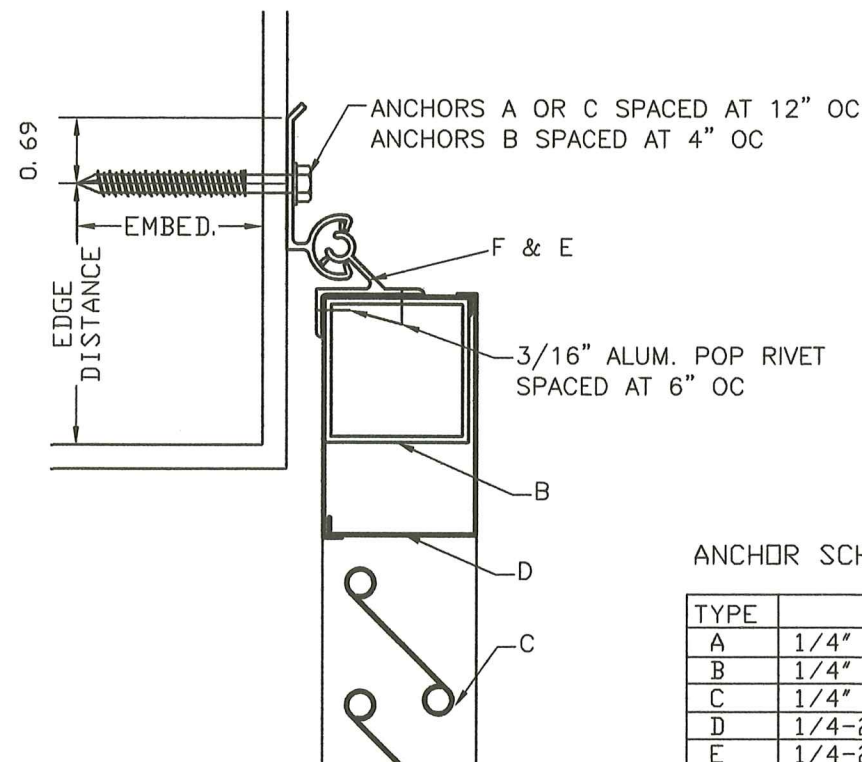
PRODUCT REVISED
as complying with the Florida
Building Code
Acceptance No. **23-1026.11**
Expiration Date **03/27/2029**
By **H. S. P. M. M.**
Miami Dade Product Control

MIAMI-DADE BCCO:

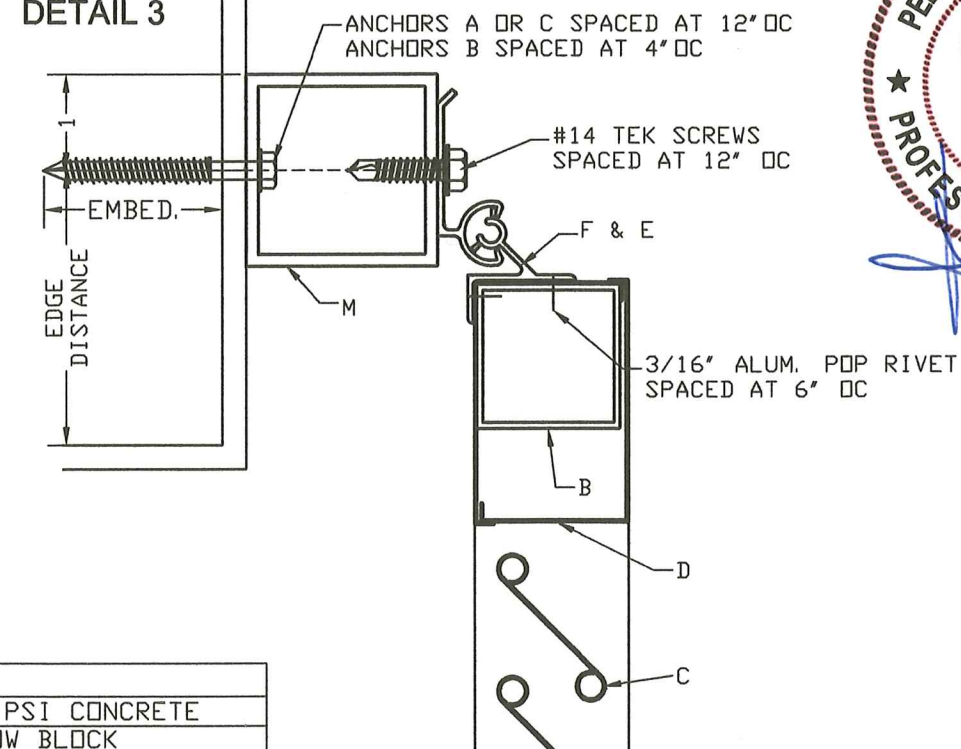
SCALE:
NA
DATE:
09/05/2023
DRAWING #
23-160
SHEET
1 OF 5

LOUVERS WITHOUT BRACKETS
SECTION DETAILS 1, 2, 3 AND 4

DETAIL 1



DETAIL 3



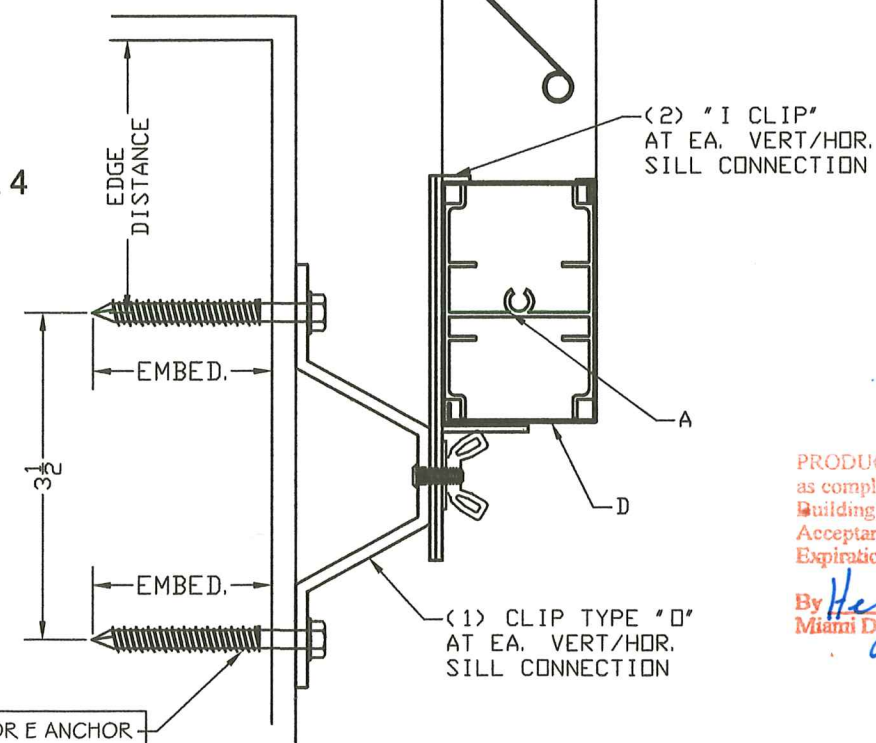
ANCHOR SCHEDULE

TYPE	DESCRIPTION
A	1/4" TAPCON/ ULTRACON, 1 3/4" EMBEDMENT INTO 3000 PSI CONCRETE
B	1/4" TAPCON/ ULTRACON, 1 1/4" EMBEDMENT INTO HOLLOW BLOCK
C	1/4" TAPCON/ ULTRACON, 1 1/2" EMBEDMENT INTO WOOD (SG=0.55)
D	1/4-20 SOLID SETS, 7/8" EMBEDMENT INTO 3000 PSI CONCRETE
E	1/4-20 SOLID SETS, 7/8" EMBEDMENT INTO HOLLOW BLOCK

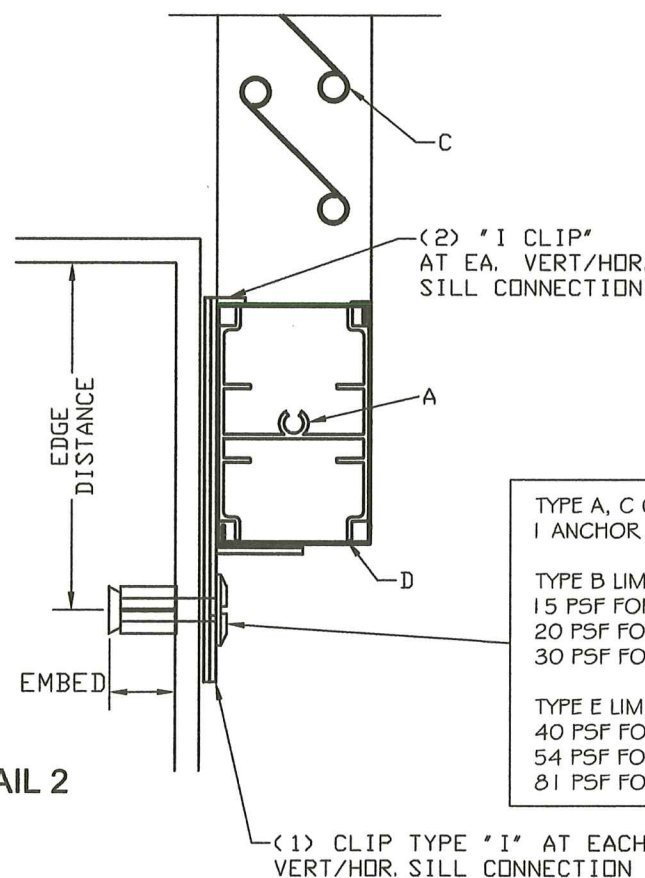
EDGE DISTANCE

TYPE	E. D.
A & B	2-1/2"
C	3/4"
D & E	3"

DETAIL 4



DETAIL 2



TYPE A, C OR D
1 ANCHOR PER CLIP ALL CONDITIONS

TYPE B LIMITED BY THE FOLLOWING PRESSURES:
15 PSF FOR 96.7" LOUVER
20 PSF FOR 72.5" LOUVER
30 PSF FOR 48.375" LOUVER

TYPE E LIMITED BY THE FOLLOWING PRESSURES:
40 PSF FOR 96.7" LOUVER
54 PSF FOR 72.5" LOUVER
81 PSF FOR 48.375" LOUVER

TYPE A, C, D OR E ANCHOR
2 PER CLIP ALL CONDITIONS

TYPE B LIMITED BY THE FOLLOWING PRESSURES:
30 PSF FOR 96.7" LOUVER
40 PSF FOR 72.5" LOUVER
60 PSF FOR 48.375" LOUVER

PRODUCT REVISED
as complying with the Florida
Building Code
Acceptance No. 23-1026.11
Expiration Date 03/27/2024
By *Hef A. M. M.*
Miami Data Product Control



Pedro De Figueiredo
PE 52609
09/06/2023

THE ISLANDER
BAHAMA LOUVER

MANUFACTURER:
WILLARD
SHUTTER COMPANY, INC.
3595 NW 46TH STREET
MIAMI, FL 33142
Tel.: (800) 826-4530
Fax.: (305) 638-8634

MIAMI-DADE BCCO:

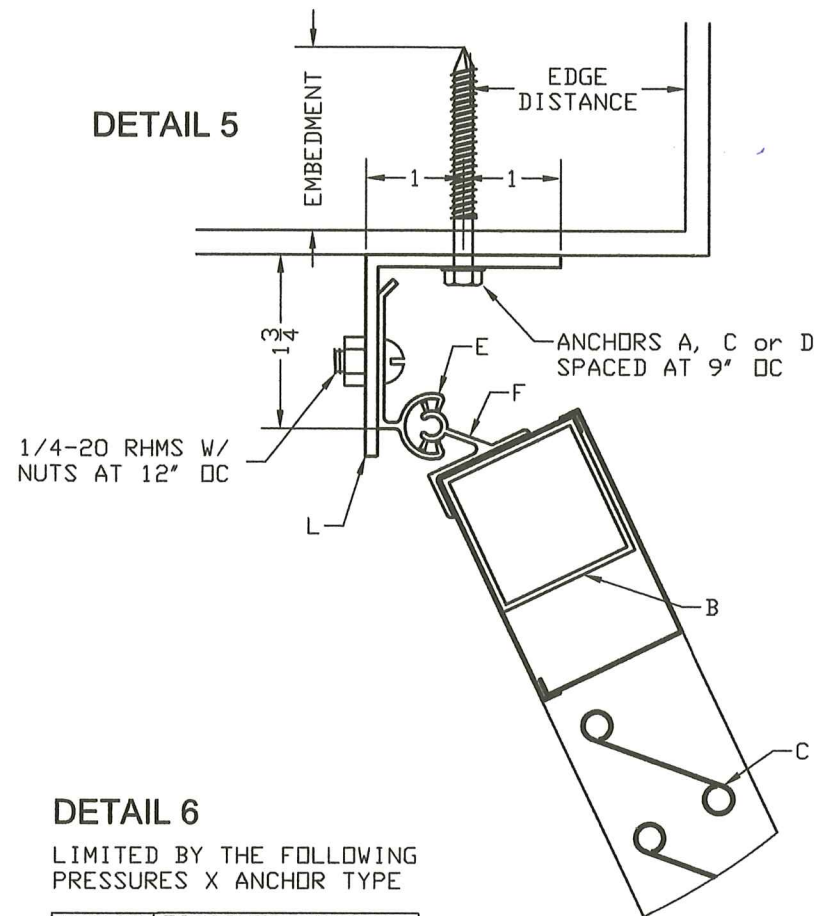
SCALE:
NA

DATE:
09/05/2023

DRAWING #
23-160

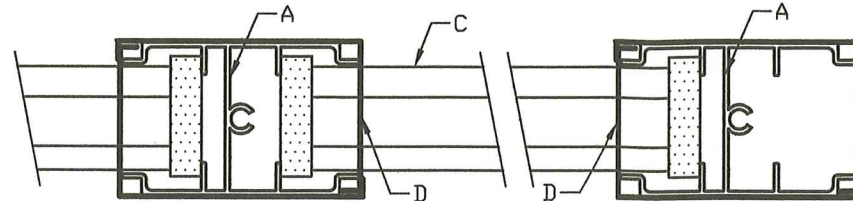
SHEET
2 OF 5

DETAIL 5



LOUVERS WITH BRACKETS
SECTION DETAILS 5, 6, 7 AND 8

TYPICAL HORIZONTAL SECTION



ANCHOR SCHEDULE

TYPE	DESCRIPTION
A	1/4" TAPCON/ ULTRACON, 1 3/4" EMBEDMENT INTO 3000 PSI CONCRETE
B	1/4" TAPCON/ ULTRACON, 1 1/4" EMBEDMENT INTO HOLLOW BLOCK
C	1/4" TAPCON/ ULTRACON, 1 1/2" EMBEDMENT INTO WOOD (SG=0.55)
D	1/4-20 SOLID SETS, 7/8" EMBEDMENT INTO 3000 PSI CONCRETE
E	1/4-20 SOLID SETS, 7/8" EMBEDMENT INTO HOLLOW BLOCK

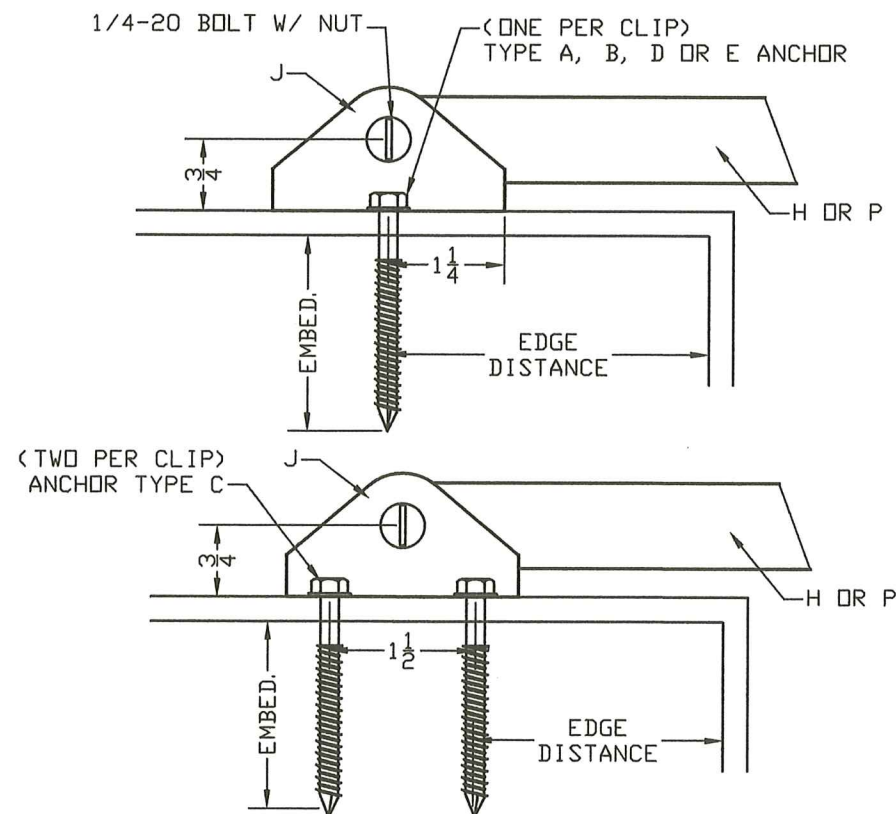
EDGE DISTANCE

TYPE	E. D.
A & B	2-1/2"
C	3/4"
D & E	3"

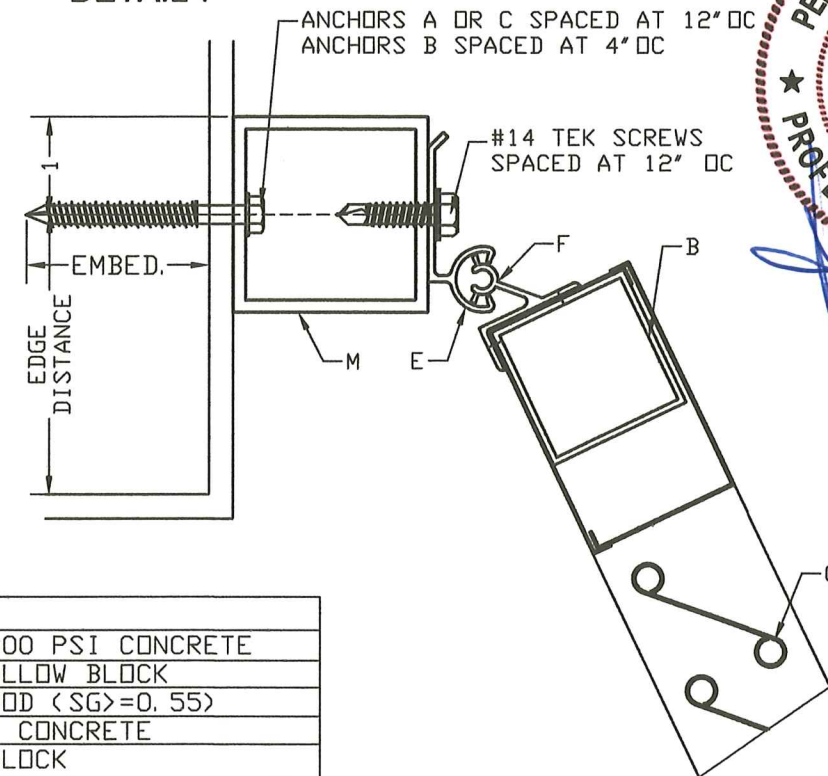
DETAIL 6

LIMITED BY THE FOLLOWING
PRESSURES X ANCHOR TYPE

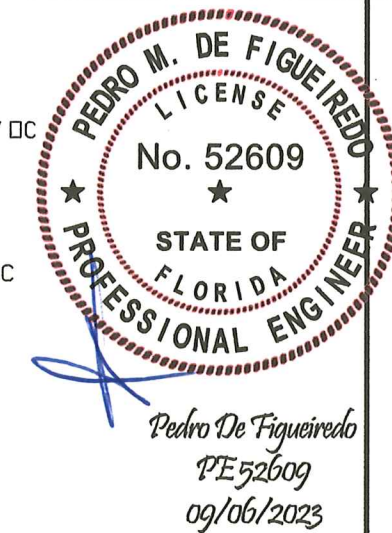
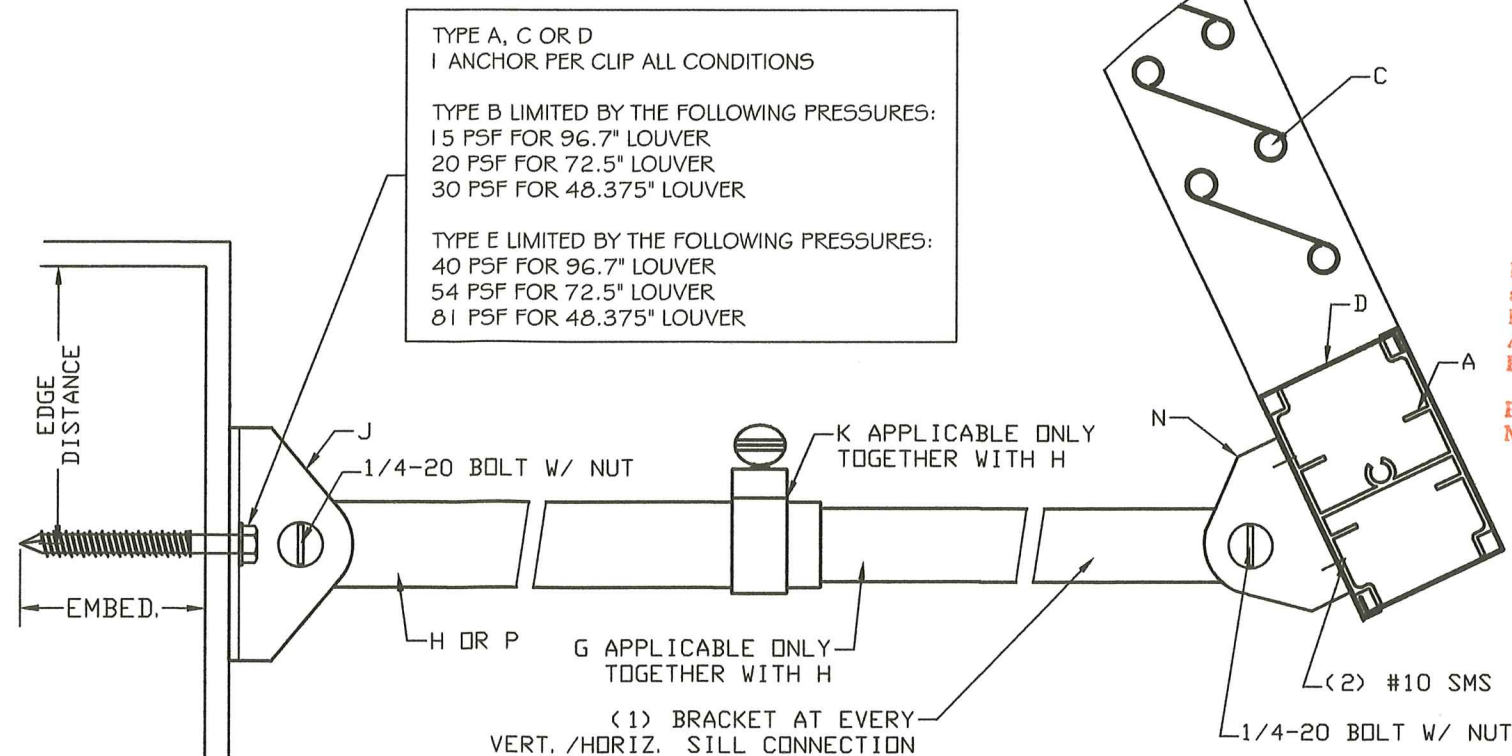
ANCHOR TYPE	FINISHED HEIGHT	96.7	72.5	48.4
A		34.6	46.1	69.1
B		--	15.6	23.3
C*		40.0	55.5	86.9
D		40.0	55.5	88.9
E		25.3	33.7	50.5



DETAIL 7



DETAIL 8



ENGINEERING SERVICES - CA 32459
9715 W. BROWARD BLVD.
PLANTATION, FL 33324
PPMF@AOL.COM
ENGINEER SEAL
PEDRO DE FIGUEIREDO
PE 52609



PRODUCT:
THE ISLANDER
BAHAMA LOUVER

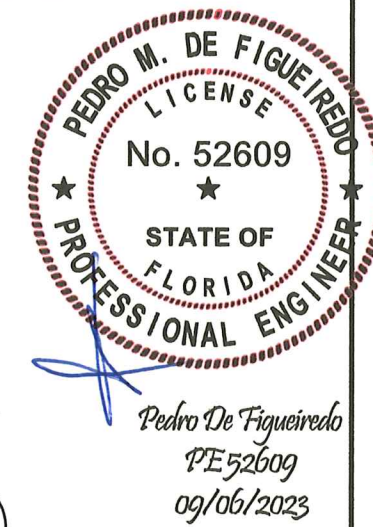
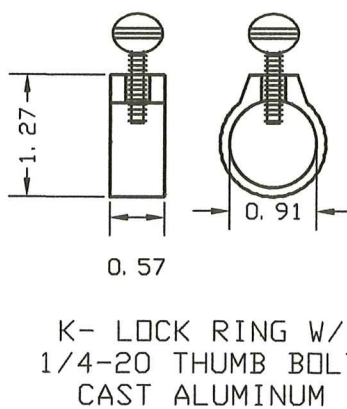
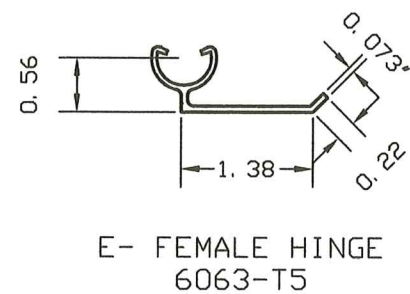
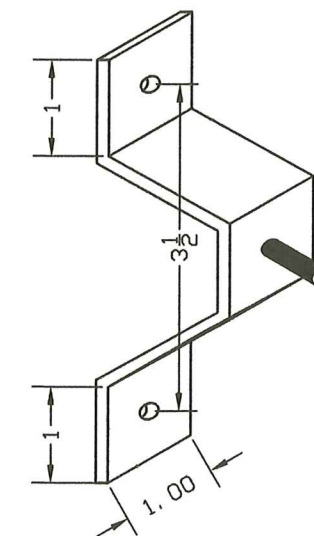
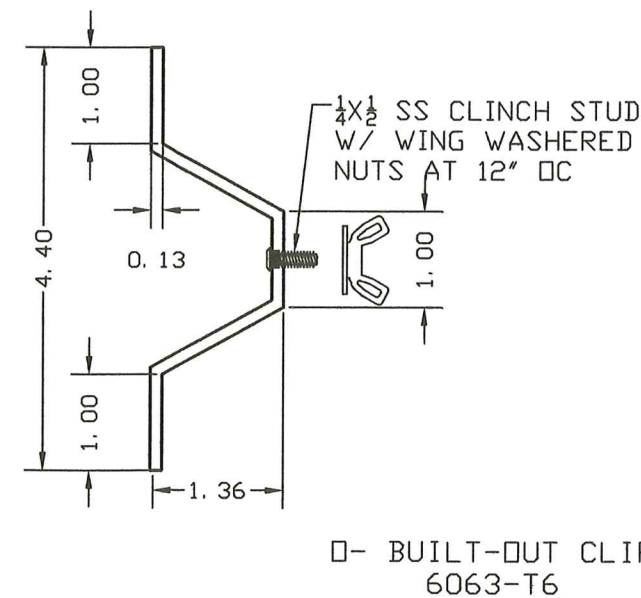
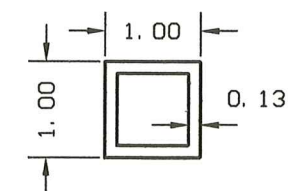
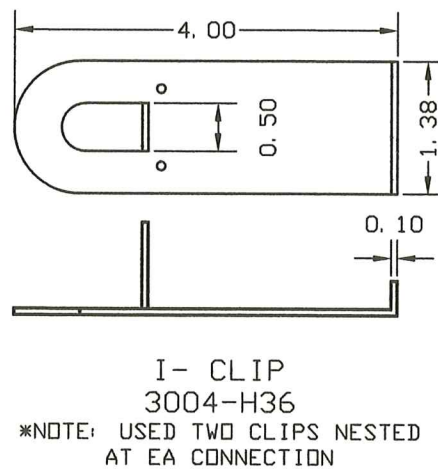
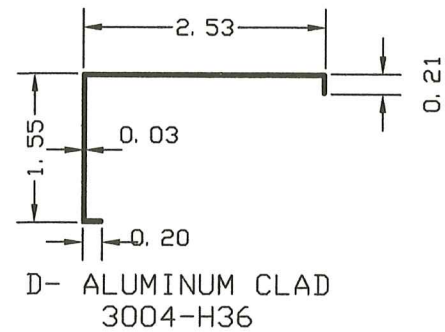
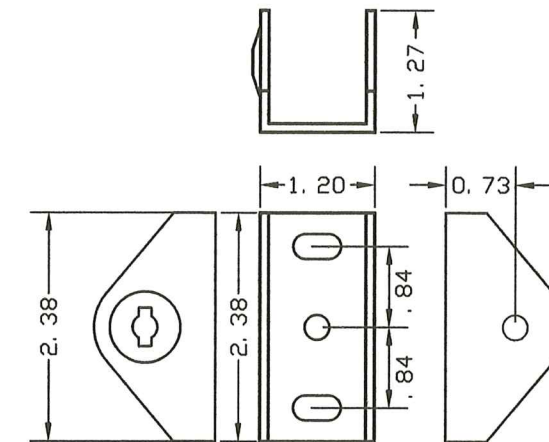
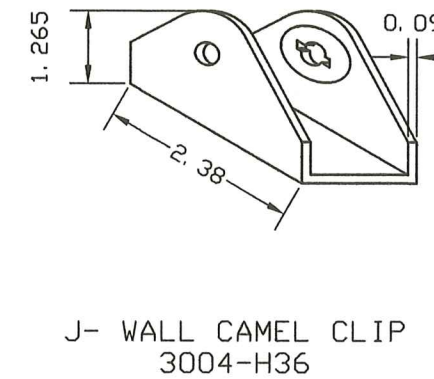
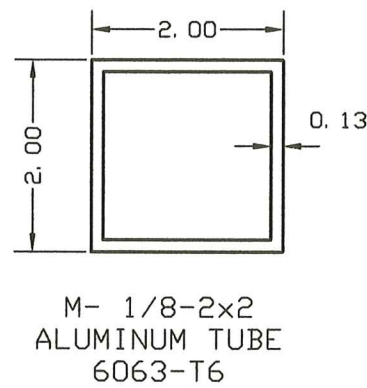
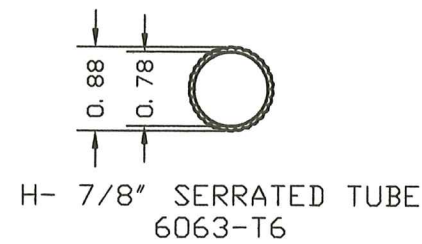
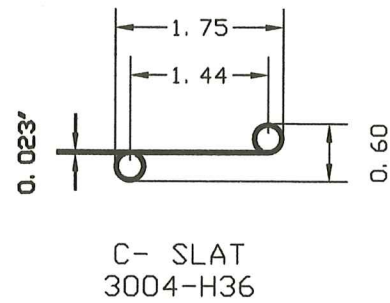
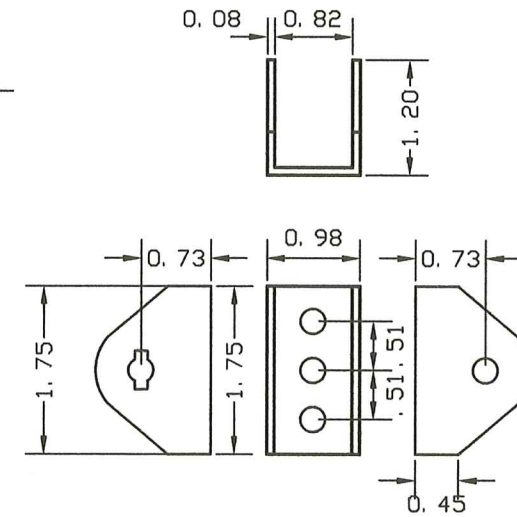
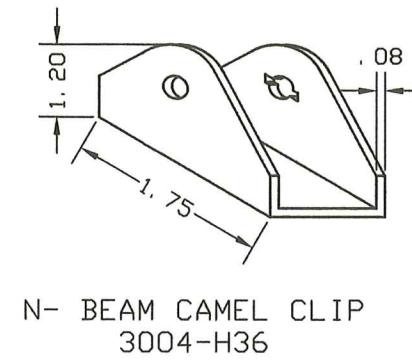
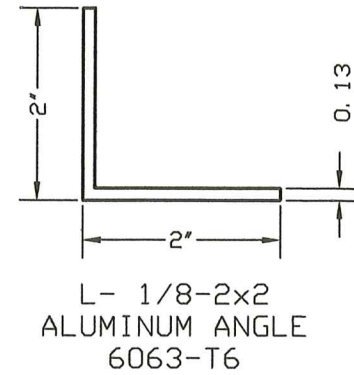
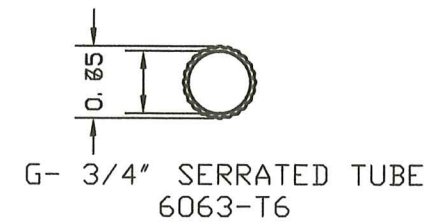
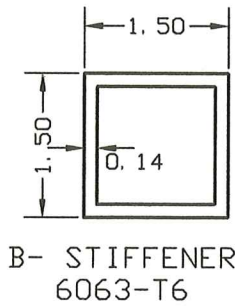
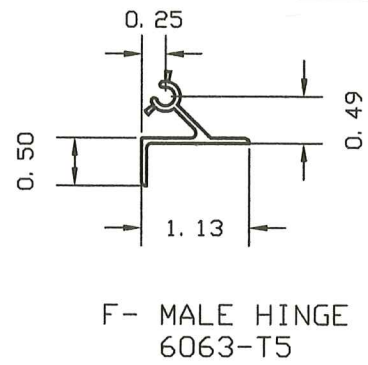
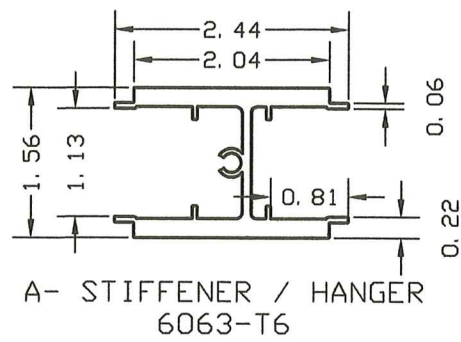
MANUFACTURER:
WILLARD
SHUTTER COMPANY, INC.
3595 NW 46TH STREET
MIAMI, FL 33142
Tel.: (800) 826-4530
Fax.: (305) 638-8634

MIAMI-DADE BCCO:

SCALE:
NA
DATE:
09/05/2023
DRAWING #
23-160
SHEET
3 OF 5

PRODUCT REVISED
as complying with the Florida
Building Code
Acceptance No. 23-1026.11
Expiration Date 03/27/2029
By *Helya Miller*
Miami Dade Product Control

LOUVER COMPONENTS



THE ISLANDER
BAHAMA LOUVER

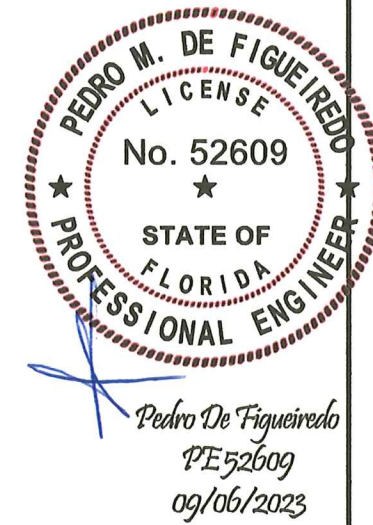
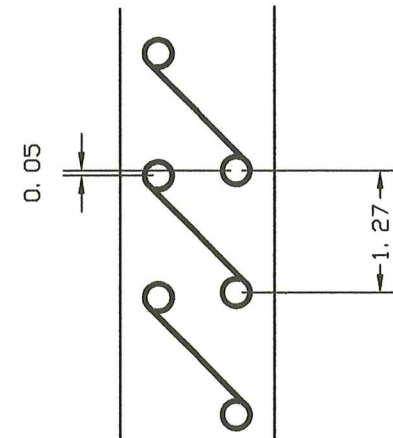
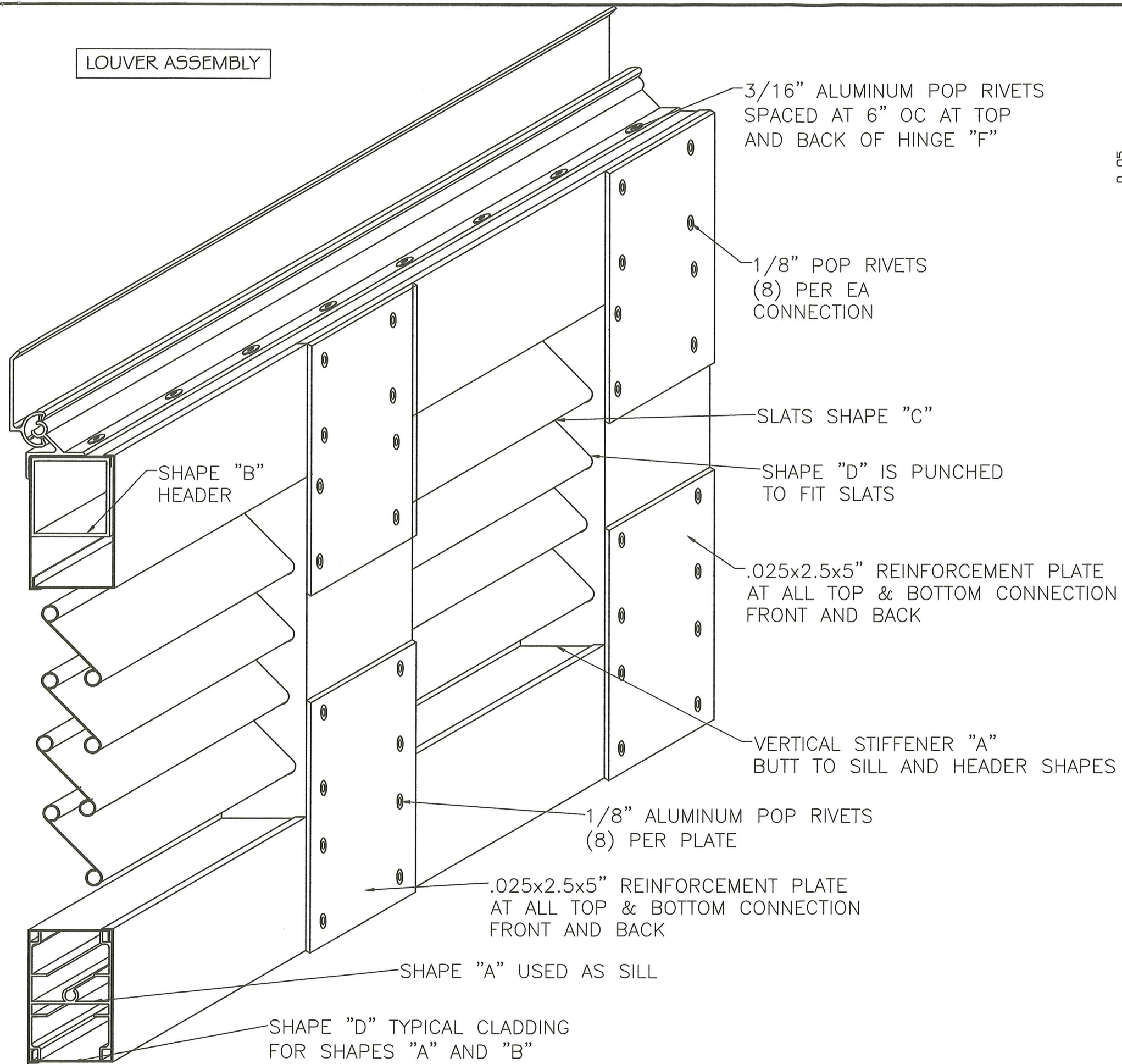
PRODUCT REVISED
as complying with the Florida
Building Code
Acceptance No. 23-1026-11
Expiration Date 03/27/2029
By: [Signature]
Miami Dade Product Control

MIAMI-DADE BCCO:

MANUFACTURER:
WILLARD
SHUTTER COMPANY, INC.
3595 NW 46TH STREET
MIAMI, FL 33142
Tel.: (800) 826-4530
Fax.: (305) 638-8634

SCALE:
NA
DATE:
09/05/2023
DRAWING #
23-160
SHEET
4 OF 5

LOUVER ASSEMBLY



PRODUCT:
**THE ISLANDER
BAHAMA LOUVER**

MANUFACTURER:
**WILLARD
SHUTTER COMPANY, INC.
3595 NW 46TH STREET
MIAMI, FL 33142
Tel.: (800) 826-4530
Fax.: (305) 638-8634**

PRODUCT REVISED
as complying with the Florida
Building Code
Acceptance No. 23-1026.11
Expiration Date 03/27/2029
By *H. A. M.*
Miami Dade Product Control

MIAMI-DADE BCCO:

SCALE:
NA
DATE:
09/05/2023
DRAWING #
23-160
SHEET
5 OF 5