



DEPARTMENT OF REGULATORY AND ECONOMIC RESOURCES (RER)  
BOARD AND CODE ADMINISTRATION DIVISION

## NOTICE OF ACCEPTANCE (NOA)

MIAMI-DADE COUNTY  
PRODUCT CONTROL SECTION  
11805 SW 26 Street, Room 208  
Miami, Florida 33175-2474  
T (786) 315-2590 F (786) 315-2599  
[www.miamidade.gov/economy](http://www.miamidade.gov/economy)

**Grille Tech, Inc.**  
**5101 NW 36 Avenue**  
**Miami, FL 33142**

**SCOPE:** This NOA is being issued under the applicable rules and regulations governing the use of construction materials. The documentation submitted has been reviewed and accepted by Miami-Dade County RER-Product Control Section to be used in Miami Dade County and other areas where allowed by the Authority Having Jurisdiction (AHJ).

This NOA shall not be valid after the expiration date stated below. The Miami-Dade County Product Control Section (In Miami Dade County) and/or the AHJ (in areas other than Miami Dade County) reserve the right to have this product or material tested for quality assurance purposes. If this product or material fails to perform in the accepted manner, the manufacturer will incur the expense of such testing and the AHJ may immediately revoke, modify, or suspend the use of such product or material within their jurisdiction. RER reserves the right to revoke this acceptance, if it is determined by Miami-Dade County Product Control Section that this product or material fails to meet the requirements of the applicable building code.

This product is approved as described herein and has been designed to comply with the Florida Building Code, including the High Velocity Hurricane Zone.

### **DESCRIPTION: Model WLF-DA15 Aluminum Louver**

**APPROVAL DOCUMENT:** Drawing No. **0551-0402-10**, titled "WLF-DA15 Aluminum Wall Louver", sheets 1 through 6 of 6, dated 04/30/2009, with revision 4 dated 11/02/2023, prepared by Wolters Engineering, Inc, signed and sealed by Scott Wolters, P.E., bearing the Miami-Dade County Product Control revision stamp with the Notice of Acceptance number and expiration date by the Miami-Dade County Product Control Section.

### **MISSILE IMPACT RATING: Large and Small Missile Impact Resistant**

**LABELING:** A permanent label with the manufacturer's name or logo, manufacturing plant's city, state, model/series, and the following statement: "Miami-Dade County Product Control Approved", is to be located on each unit.

**RENEWAL** of this NOA shall be considered after a renewal application has been filed and there has been no change in the applicable building code negatively affecting the performance of this product.

**TERMINATION** of this NOA will occur after the expiration date or if there has been a revision or change in the materials, use, and/or manufacture of the product or process. Misuse of this NOA as an endorsement of any product, for sales, advertising or any other purposes shall automatically terminate this NOA. Failure to comply with any section of this NOA shall be cause for termination and removal of NOA.

**ADVERTISEMENT:** The NOA number preceded by the words Miami-Dade County, Florida, and followed by the expiration date may be displayed in advertising literature. If any portion of the NOA is displayed, then it shall be done in its entirety.

**INSPECTION:** A copy of this entire NOA shall be provided to the user by the manufacturer or its distributors and shall be available for inspection at the job site at the request of the Building Official. This NOA **revises NOA # 22-0224.08** and consists of this page 1 and evidence pages E-1, E-2 and E-3, as well as approval document mentioned above.

The submitted documentation was reviewed by **Carlos M. Utrera, P.E.**



  
12/28/23

NOA No. 23-1107.05  
Expiration Date: June 30, 2025  
Approval Date: January 4, 2024  
Page 1

**NOTICE OF ACCEPTANCE: EVIDENCE SUBMITTED**

**1. Evidence submitted under previous NOA's**

**A. DRAWINGS “Submitted under NOA #15-0218.08”**

1. Drawing No. **0551-0402-10**, titled “WLF-DA15 Aluminum Wall Louver”, sheets 1 through 6 of 6, dated 04/30/2009, with revision 1 dated 02/10/2015, prepared Wolters Engineering, Inc, signed and sealed by Scott Wolters, P.E.

**B. TESTS “Submitted under NOA # 10-0518.05”**

1. Test reports on 1) Uniform Static Air Pressure Test, Loading per FBC TAS 202-94  
2) Large Missile Impact Test per FBC, TAS 201-94  
3) Cyclic Wind Pressure Loading per FBC, TAS 203-94  
along with marked-up drawings and installation diagram of WLF-DA15 Aluminum Louver Systems", prepared by Hurricane Test Laboratory, Inc., Report No. **0551-0204-10**, dated 04/30/2010, signed and sealed by Vinu J. Abraham, P.E.

**C. CALCULATIONS “Submitted under NOA #10-0518.05”**

1. Anchor verification calculations and structural analysis prepared by Wolters Engineering, Inc, dated 05/12/2010, signed and sealed by Scott Wolters, P.E.

**D. QUALITY ASSURANCE**

1. Miami-Dade Department of Regulatory and Economic Resources (RER)

**E. MATERIAL CERTIFICATIONS**

1. None.

**F. STATEMENTS “Submitted under NOA #15-0218.08”**

1. Statement letter of code conformance with 2010 and 5<sup>th</sup> edition (2014) FBC issued by Wolters Engineering, Inc, dated 05/20/2015, signed and sealed by Scott Wolters, P.E.

**“Submitted under NOA # 10-0518.05”**

2. No financial interest letter issued by Wolters Engineering, Inc, dated 10/13/2009, signed and sealed by Scott Wolters, P.E.
3. Code compliance letter issued by Hurricane Test Laboratory, Inc., dated 04/29/2010, signed and sealed by Vinu J. Abraham, P.E.



Carlos M. Utrera, P.E.

Product Control Examiner

NOA No. 23-1107.05

Expiration Date: June 30, 2025

Approval Date: January 4, 2024

**NOTICE OF ACCEPTANCE: EVIDENCE SUBMITTED**

**2. Evidence submitted under previous NOAs**

**A. DRAWINGS “Submitted under NOA #17-0919.08”**

1. Drawing No. **0551-0402-10**, titled “WLF-DA15 Aluminum Wall Louver”, sheets 1 through 6 of 6, dated 04/30/09, with revision 2 dated 09/08/2017, prepared Wolters Engineering, Inc, signed and sealed by Scott Wolters, P.E.

**B. TESTS**

1. None.

**C. CALCULATIONS**

1. None.

**D. QUALITY ASSURANCE**

1. Miami-Dade Department of Regulatory and Economic Resources (RER)

**E. MATERIAL CERTIFICATIONS**

1. None.

**F. STATEMENTS “Submitted under NOA # 20-0302.04”**

1. Statement letter of code conformance with the 6<sup>th</sup> Edition (2017) FBC issued by Wolters Engineering, Inc, dated 02/19/2020, signed and sealed by Scott Wolters, P.E.



---

**Carlos M. Utrera, P.E.**  
**Product Control Examiner**  
**NOA No. 23-1107.05**  
**Expiration Date: June 30, 2025**  
**Approval Date: January 4, 2024**

**NOTICE OF ACCEPTANCE: EVIDENCE SUBMITTED**

**3. Evidence submitted under NOA # 22-0224.08 and new**

**A. DRAWINGS**

1. Drawing No. **0551-0402-10**, titled “WLF-DA15 Aluminum Wall Louver”, sheets 1 through 6 of 6, dated 04/30/09, with revision 4 dated 11/02/2023, prepared Wolters Engineering, Inc, signed and sealed by Scott Wolters, P.E.

**B. TESTS**

1. None.

**C. CALCULATIONS**

1. None.

**D. QUALITY ASSURANCE**

1. Miami-Dade Department of Regulatory and Economic Resources (RER).

**E. MATERIAL CERTIFICATIONS**

1. None.

**F. STATEMENTS**

1. Statement letter of code conformance with the 8<sup>th</sup> Edition (2023) of the FBC, issued by Wolters Engineering, Inc, dated 11/02/2023, signed and sealed by Scott Wolters, P.E.
2. Statement letter of code conformance with the 7<sup>th</sup> Edition (2020) of the FBC, issued by Wolters Engineering, Inc, dated 02/22/2022, signed and sealed by Scott Wolters, P.E.



---

**Carlos M. Utrera, P.E.**  
**Product Control Examiner**  
**NOA No. 23-1107.05**  
**Expiration Date: June 30, 2025**  
**Approval Date: January 4, 2024**

GENERAL NOTES

1. THIS ALUMINUM WALL LOUVER PRODUCT IS LARGE MISSILE IMPACT RESISTANT AND DOES NOT REQUIRE THE USE OF SHUTTERS.
2. THIS LOUVER SYSTEM HAS BEEN TESTED TO TAS 201-94, TAS 202-94 (LOADS ONLY), AND TAS 203-94 (REF. HTL TEST REPORT 0551-0204-10) AND MEETS THE REQUIREMENTS OF THE 8TH EDITION (2023) FLORIDA BUILDING CODE, INCLUDING THE HVHZ PROVISIONS.
3. THIS LOUVER PRODUCT IS NOT TESTED FOR WATER INFILTRATION RESISTANCE. THESE LOUVERS ARE TO BE INSTALLED IN A LOCATION WHERE THE ROOM BEHIND THE LOUVER IS DESIGNED TO DRAIN WATER PENETRATING INTO THE ROOM, AND THE ROOM WILL HOUSE WATER RESISTANT / WATER PROOF EQUIPMENT, COMPONENTS, OR SUPPLIES.
4. THE STRUCTURAL ADEQUACY AND SUITABILITY OF THE WOOD BUCKS OR OTHER SUBSTRATES TO WHICH THE LOUVER SYSTEM IS TO BE INSTALLED SHALL BE VERIFIED BY A LICENSED ENGINEER OR REGISTERED ARCHITECT OR AS APPROVED BY THE AUTHORITY HAVING JURISDICTION.
5. AN ALLOWABLE STRESS INCREASE HAS NOT BEEN USED IN THE ANCHOR ANALYSIS FOR THIS SYSTEM.
6. WHERE DISSIMILAR MATERIALS OF ANY TYPE (LOUVER SYSTEM, ANCHORAGE, OR SUBSTRATE) COME IN CONTACT, THE MATERIALS MUST BE PROPERLY COATED OR OTHERWISE PROTECTED AS REQUIRED BY FBC TO PREVENT GALVANIC REACTIONS. SPECIAL CARE SHALL BE TAKEN TO PROTECT ALUMINUM LOUVERS FROM PRESSURE TREATED LUMBER, AND ALL FASTENERS SHALL BE SELECTED WITH PROPER COATING OR MATERIAL TYPES TO PREVENT REACTIONS WITH LOUVERS OR SUBSTRATES.
7. MINIMUM LOUVER SIZE IS 10" X 10"
8. LOUVERS MAY BE USED IN SINGLE UNIT CONFIGURATION, DOUBLE WIDE OR TRIPLE WIDE MULLED, OR DOUBLE HIGH MULLED CONFIG.
9. THE MAXIMUM DESIGN PRESSURE OF THIS LOUVER SYSTEM IS + / - 140.0 P.S.F.

INDEX	
SHEET	DESCRIPTION
1	NOTES, 3-WIDE ELEV.
2	SECTIONS, DETAILS
3	SECTIONS, DETAILS
4	DETAILS, ANCHOR TABLE
5	TWO-HIGH DETAILS, BOM
6	EXTRUSION PROFILES

BY	LAT	SV	SV	
DESCRIPTION	CODE UPDATE - BLADE REVISION	CODE UPDATE	CODE UPDATE	CODE UPDATE
DATE	2/10/2015	9/8/2017	2/22/22	11/2/23
REV.	1	2	3	4

WLF-DA15 Aluminum Wall Louver

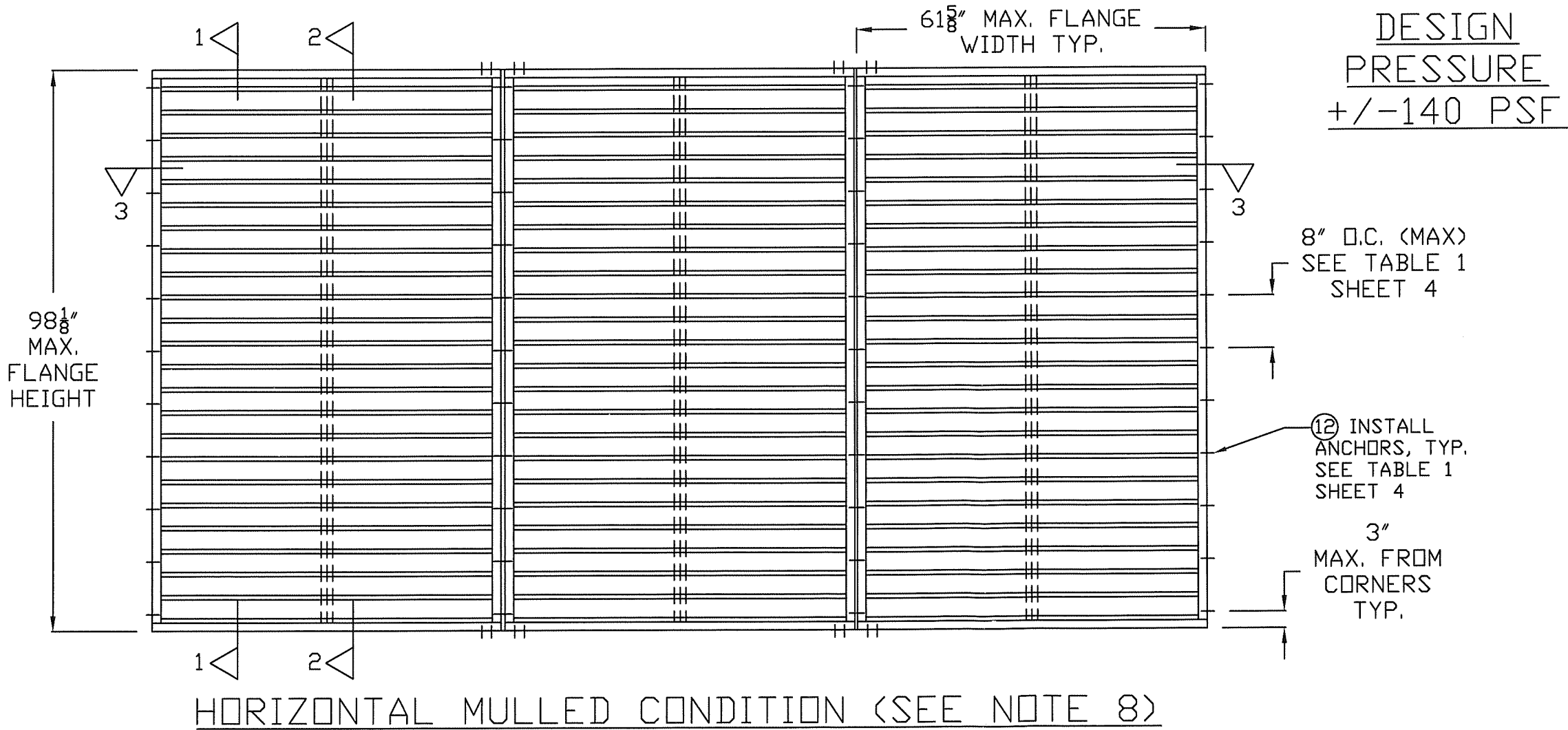
Large Missile Impact Resistant

**Grille Tech, Inc.**  
5101 NW 36th AVE  
MIAMI, FL 33142  
PHONE: 305.537.0053  
FAX: 305.537.0064

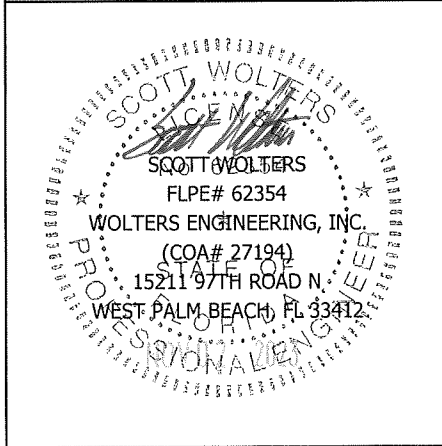
DRAWING # 0551-0402-10

SCALE: NTS

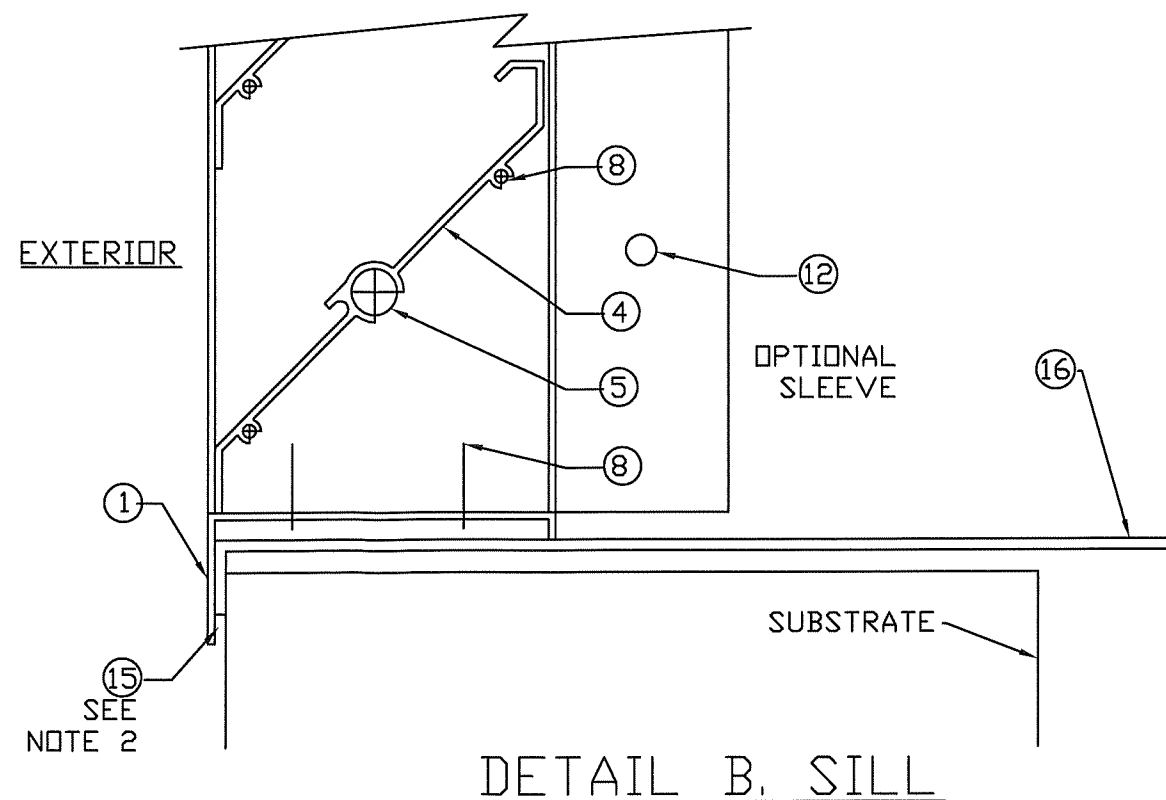
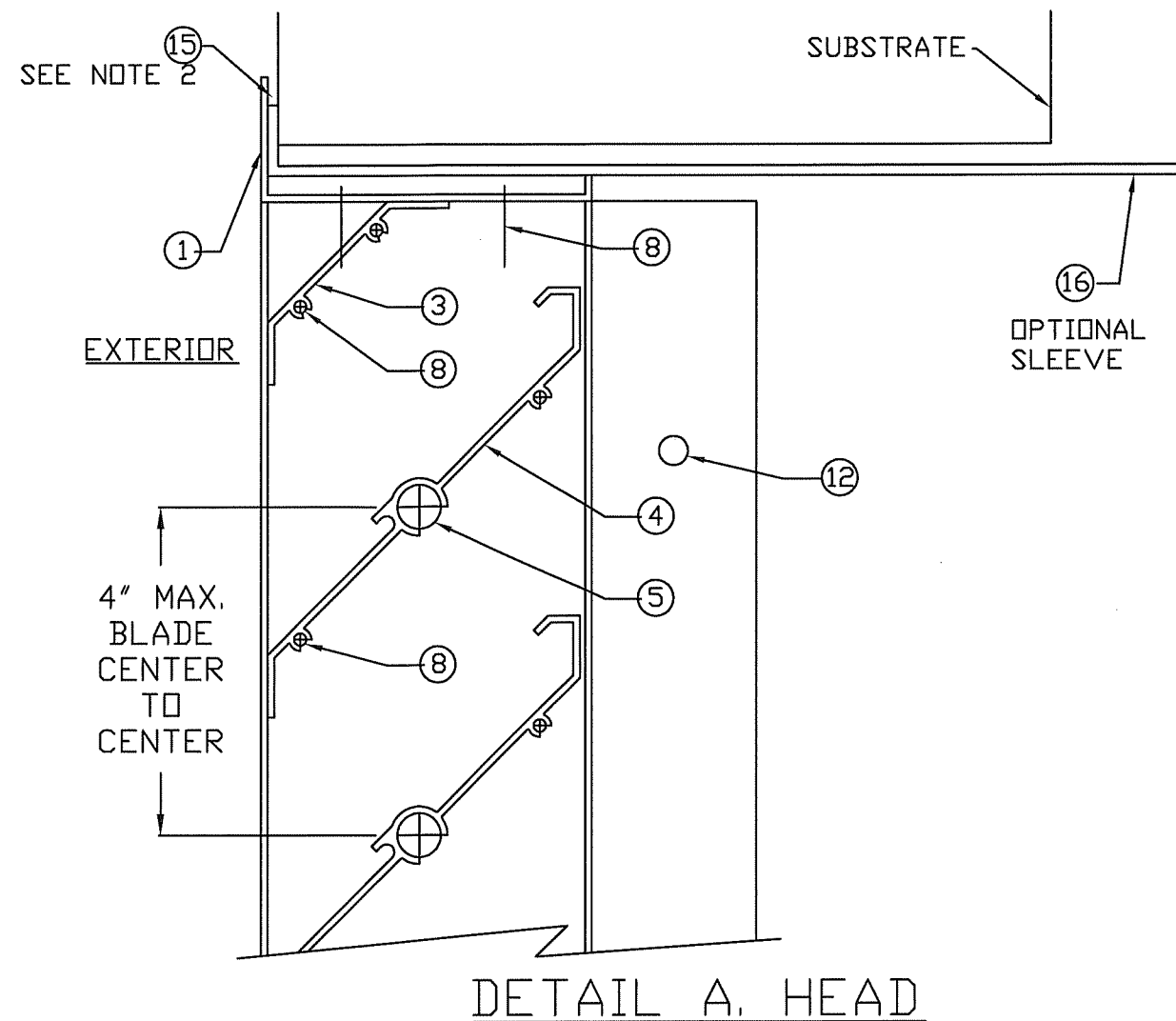
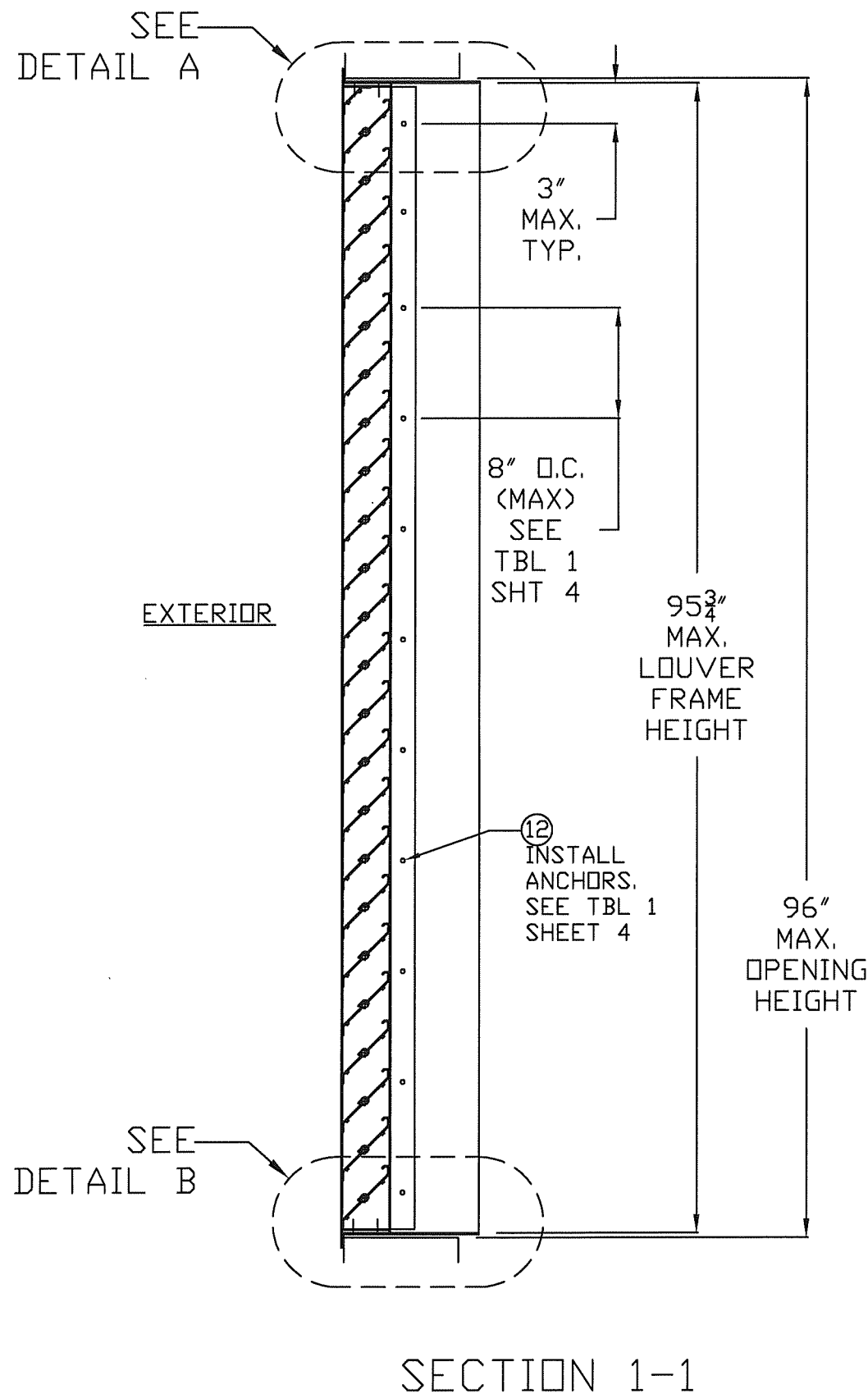
SHEET 1 of 6



**PRODUCT REVISED**  
as complying with the Florida Building Code  
NOA-No. 23-1107.05  
Expiration Date 06/30/2025  
By *[Signature]*  
Miami-Dade Product Control



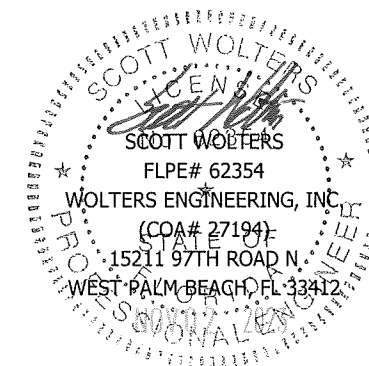




NOTES

1. NO INSTALL. ANCHORS THROUGH LOUVER FRAME HEAD OR SILL.
2. FULL COVERAGE DOW 795 SILICONE BETWEEN SLEEVE FRONT FLANGE TO SUBSTRATE, AND LOUVER FRONT FLANGE TO SUBSTRATE AND/OR SLEEVE FLANGE

**PRODUCT REVISED**  
as complying with the Florida Building Code  
NOA-No. 23-1107.05  
Expiration Date 06/30/2025  
By *[Signature]*  
Miami-Dade Product Control



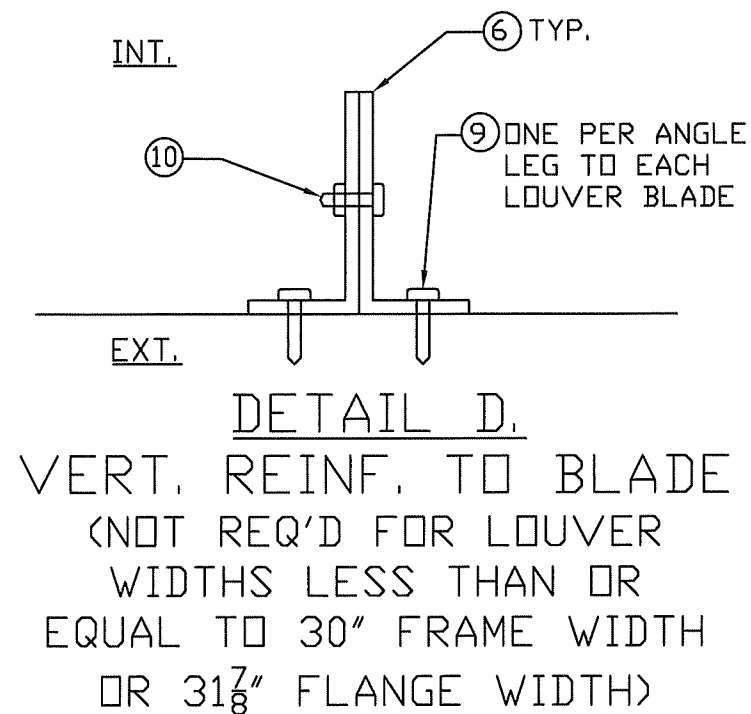
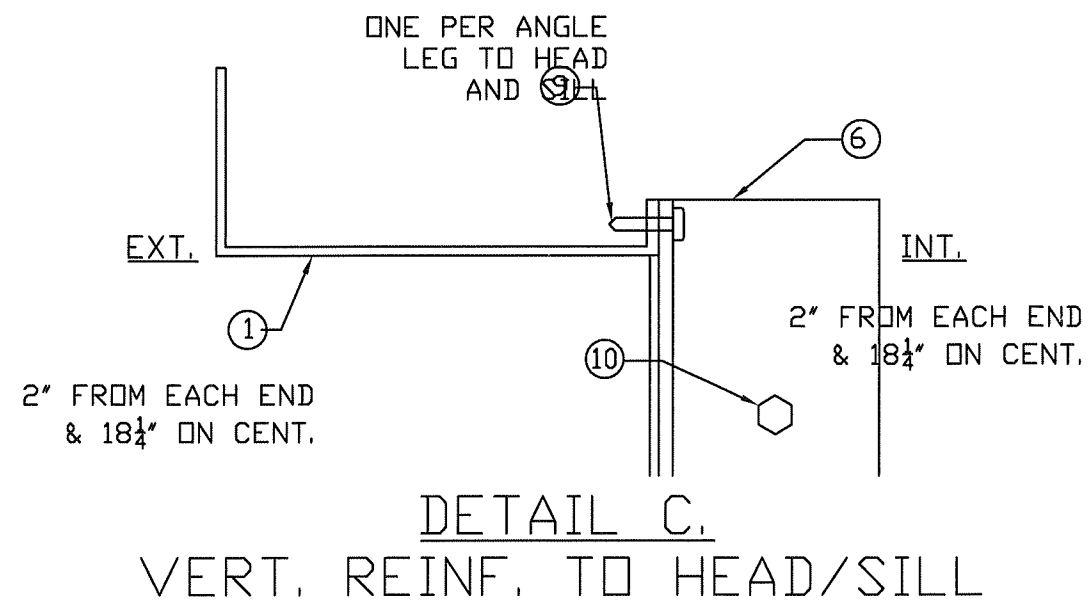
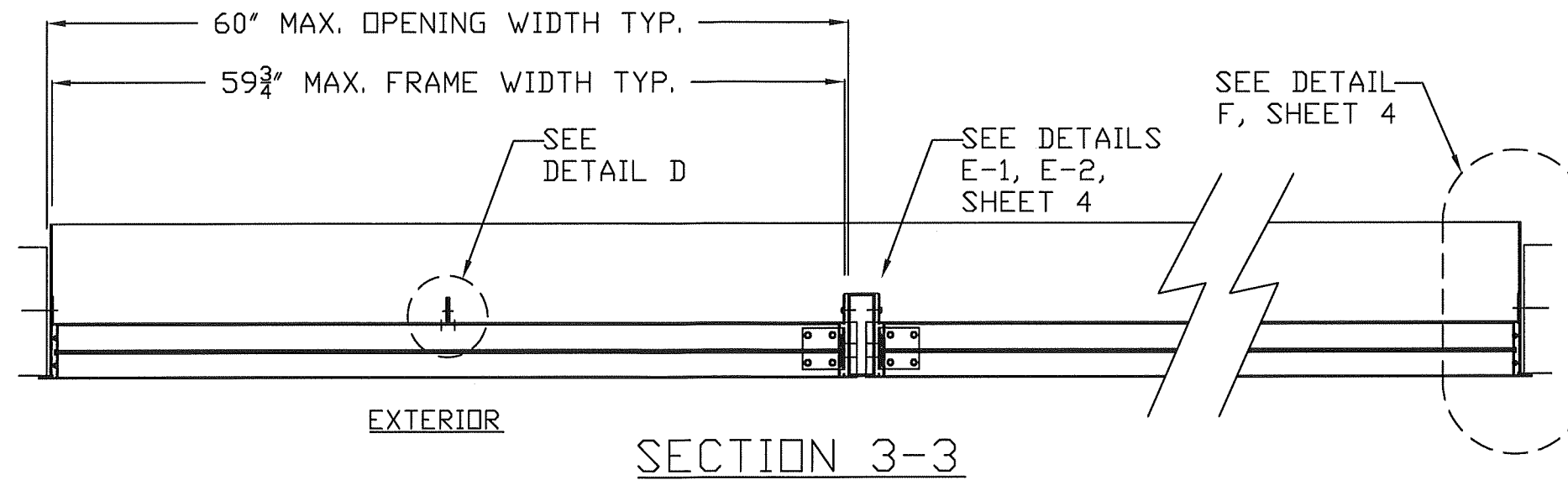
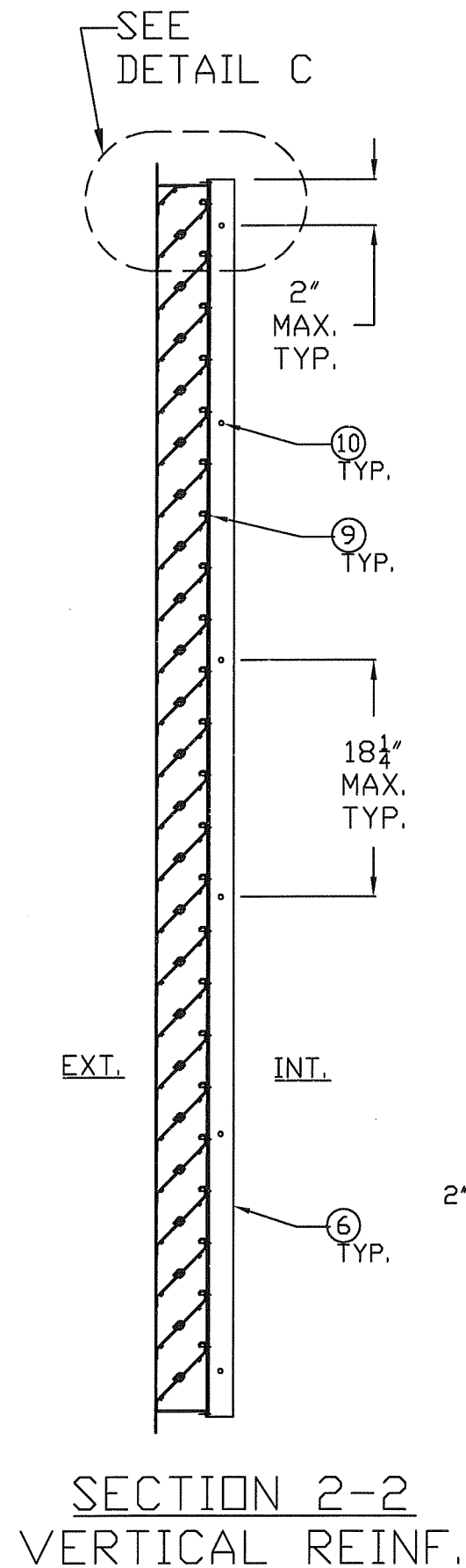
REV.	DATE	DESCRIPTION	BY
0	4/30/2009	ORIGINAL RELEASE	LAT
1	2/10/2015	CODE UPDATE - BLADE REVISION	SV
2	9/8/2017	CODE UPDATE	SV
3	2/22/22	CODE UPDATE	SV

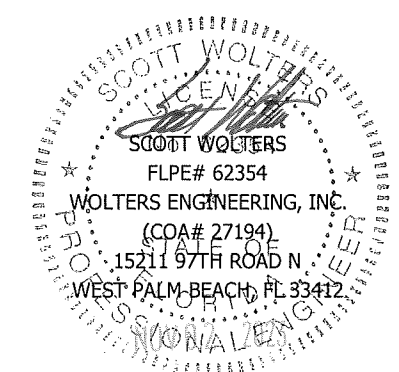
WLF-DA15 Aluminum Wall Louver	Grille Tech, Inc. 5101 NW 36th AVE MIAMI, FL 33142 PHONE: 305.537.0053 FAX: 305.537.0064
Large Missile Impact Resistant	

DRAWING # 0551-0402-10
SCALE: NTS
SHEET 2 of 6



**PRODUCT REVISED**  
as complying with the Florida  
Building Code  
NOA-No. 23-1107.05  
Expiration Date 06/30/2025  
By *[Signature]*  
Miami-Dade Product Control



REV.	DATE	DESCRIPTION	BY
0	4/30/2009	ORIGINAL RELEASE	LAT
1	2/10/2015	CODE UPDATE - BLADE REVISION	SV
2	9/8/2017	CODE UPDATE	SV
3	2/22/22	CODE UPDATE	SV

WLF-DA15 Aluminum Wall Louver  
Large Missile Impact Resistant

**Grille Tech, Inc.**  
5101 NW 36th AVE  
MIAMI, FL 33142  
PHONE: 305.537.0053  
FAX: 305.537.0064

DRAWING # 0551-0402-10  
SCALE: NTS  
SHEET 3 of 6

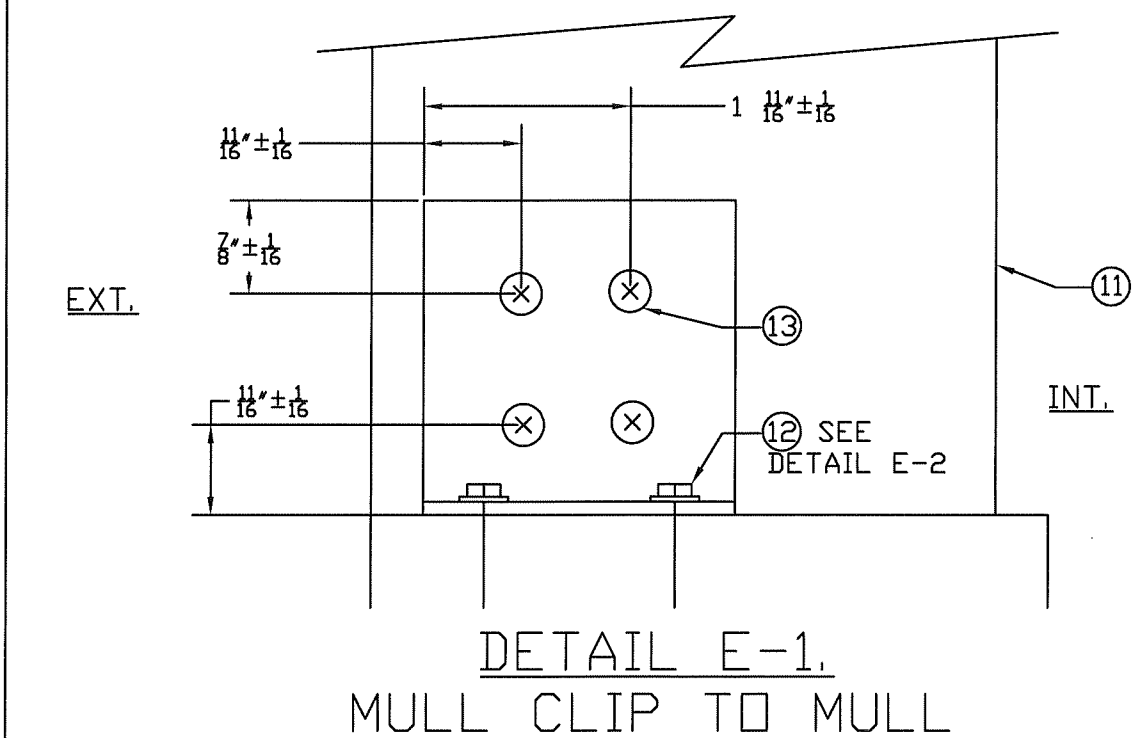
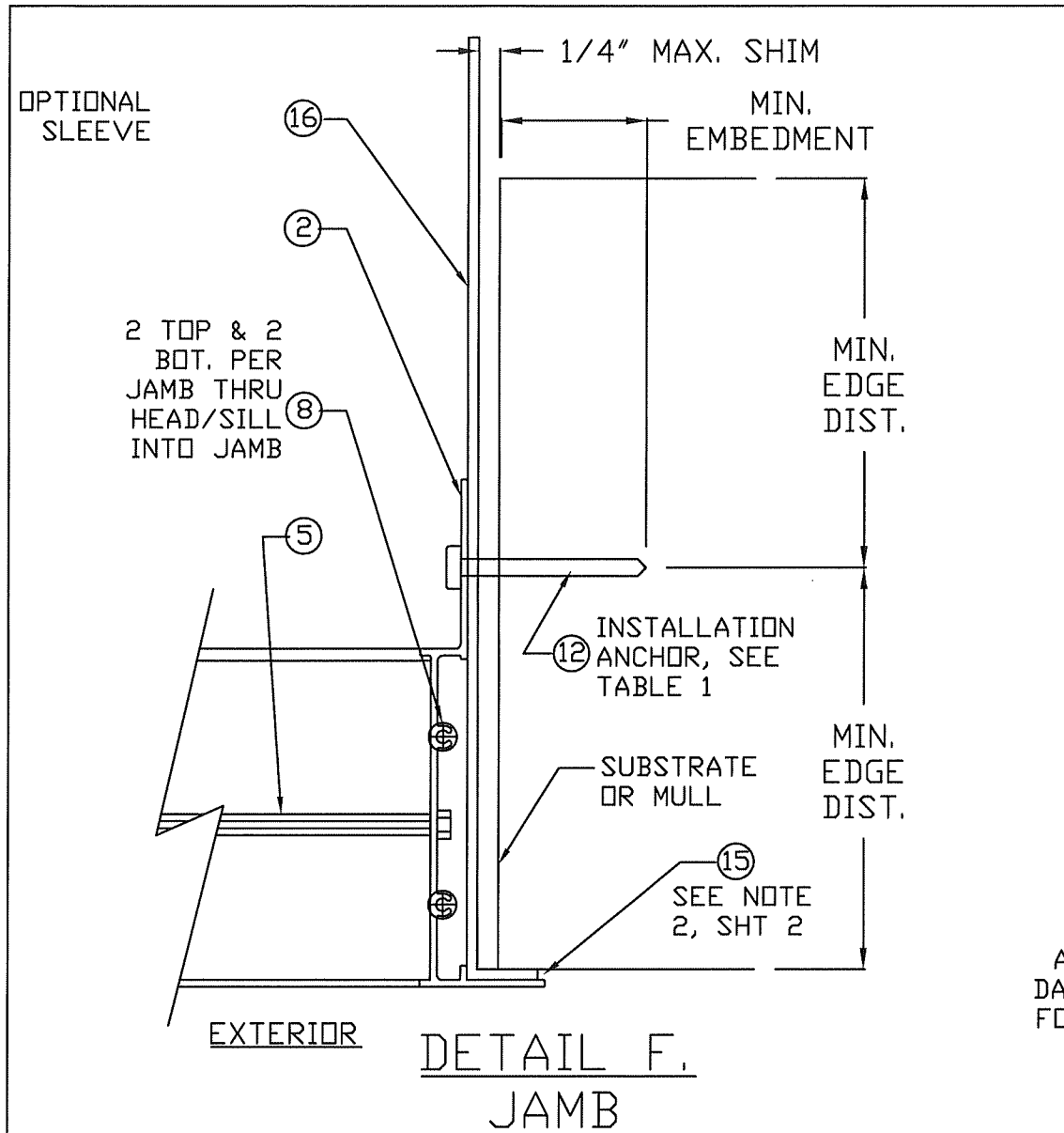
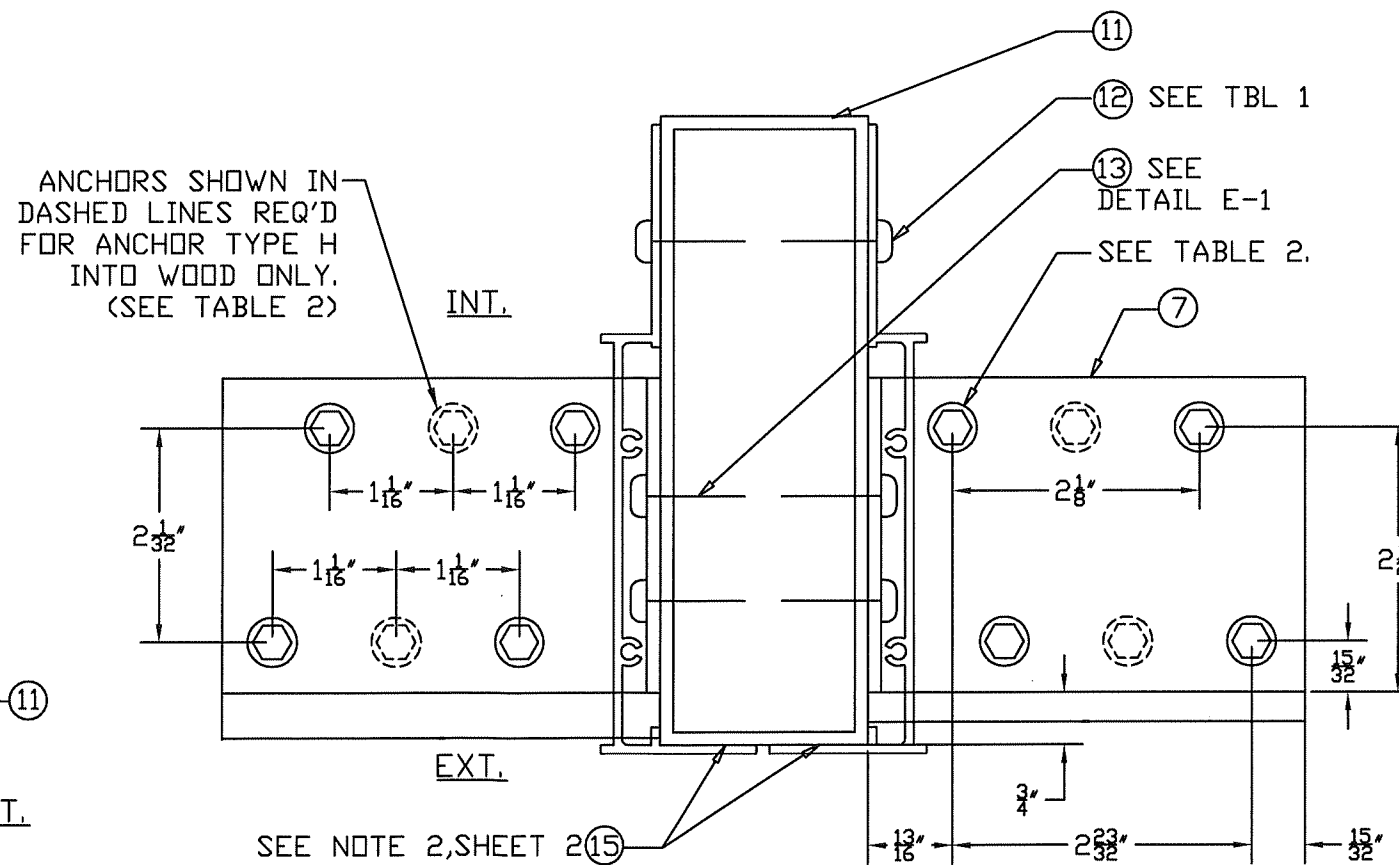


TABLE 1. QUALIFIED INSTALLATION ANCHOR INFORMATION

ID	ANCHOR	SUBSTRATE	MIN. EMBED.	MIN. EDGE DISTANCE
A	1/4" ITW TAPCON	CONCRETE (3.2 KSI MIN)	1"	2 1/2"
B	1/4" ITW TAPCON	GROUT FILLED CMU	1 1/4"	2 1/2"
C	1/4" ITW TAPCON	WOOD (G=0.42 MIN)	1 3/8"	1"
D	#12 WOOD SCREW GRADE 5	WOOD (G=0.42 MIN)	1 3/8"	1"
E	#12 TEK SMS GRADE 5	1/8" ALUM. 6063-T5 MIN.	-	1/2"
F	#12 TEK SMS GRADE 5	1/8" STEEL 36 KSI MIN.	-	1/2"

TABLE 2. QUALIFIED MULLION CLIP ANCHOR INFORMATION

ID	ANCHOR	SUBSTRATE	MIN. EMBED.	MIN. EDGE DISTANCE	QTY PER CLIP
96" MAX. LENGTH VERTICAL MULLION, 61 5/8" MAX. LOUVER FLANGE WIDTHS					
G	5/16" ITW TAPCON	CONCRETE (2.9 KSI MIN)	2 1/4"	2 1/2"	4
H	#14 WOOD SCREW GRADE 5	WOOD (G=0.42 MIN)	2 1/2"	2 1/2"	6
I	#12 TEK SMS GRADE 5	1/8" STEEL 36 KSI MIN.	-	1"	4
60" MAX. LENGTH HORIZONTAL MULLION, 98 1/8" MAX. LOUVER FLANGE HEIGHTS					
A	1/4" ITW TAPCON	CONCRETE (3.2 KSI MIN)	1"	2 1/2"	4
D	#12 WOOD SCREW GRADE 5	WOOD (G=0.42 MIN)	1 3/8"	1"	4
F	#12 TEK SMS GRADE 5	1/8" STEEL 36 KSI MIN.	-	1/2"	4



**PRODUCT REVISED**  
as complying with the Florida Building Code  
NOA-No. 23-1107.05  
Expiration Date 06/30/2025  
By *[Signature]*  
Miami-Dade Product Control

SCOTT WOLTERS  
LICENSED PROFESSIONAL ENGINEER  
FLPE# 62354  
WOLTERS ENGINEERING, INC.  
(COA# 27194)  
15211 97TH ROAD N  
WEST PALM BEACH, FL 33412

REV.	DATE	DESCRIPTION	BY	LAT	SV	SV
0	4/30/2009	ORIGINAL RELEASE				
1	2/10/2015	CODE UPDATE - BLADE REVISION				
2	9/8/2017	CODE UPDATE				
3	2/22/22	CODE UPDATE				

WLF-DA15 Aluminum Wall Louver  
Large Missile Impact Resistant

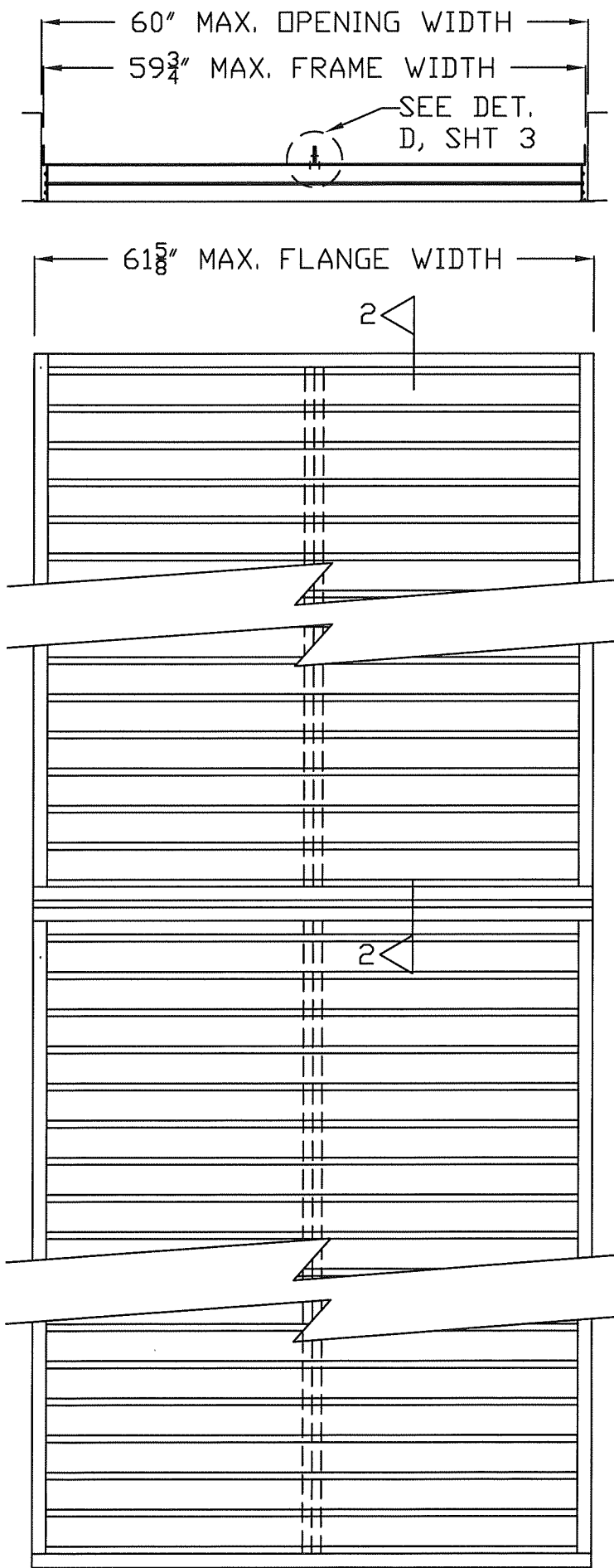
**Grille Tech, Inc.**  
5101 NW 36th AVE  
MIAMI, FL 33142  
PHONE: 305.537.0053  
FAX: 305.537.0064

DRAWING # 0551-0402-10

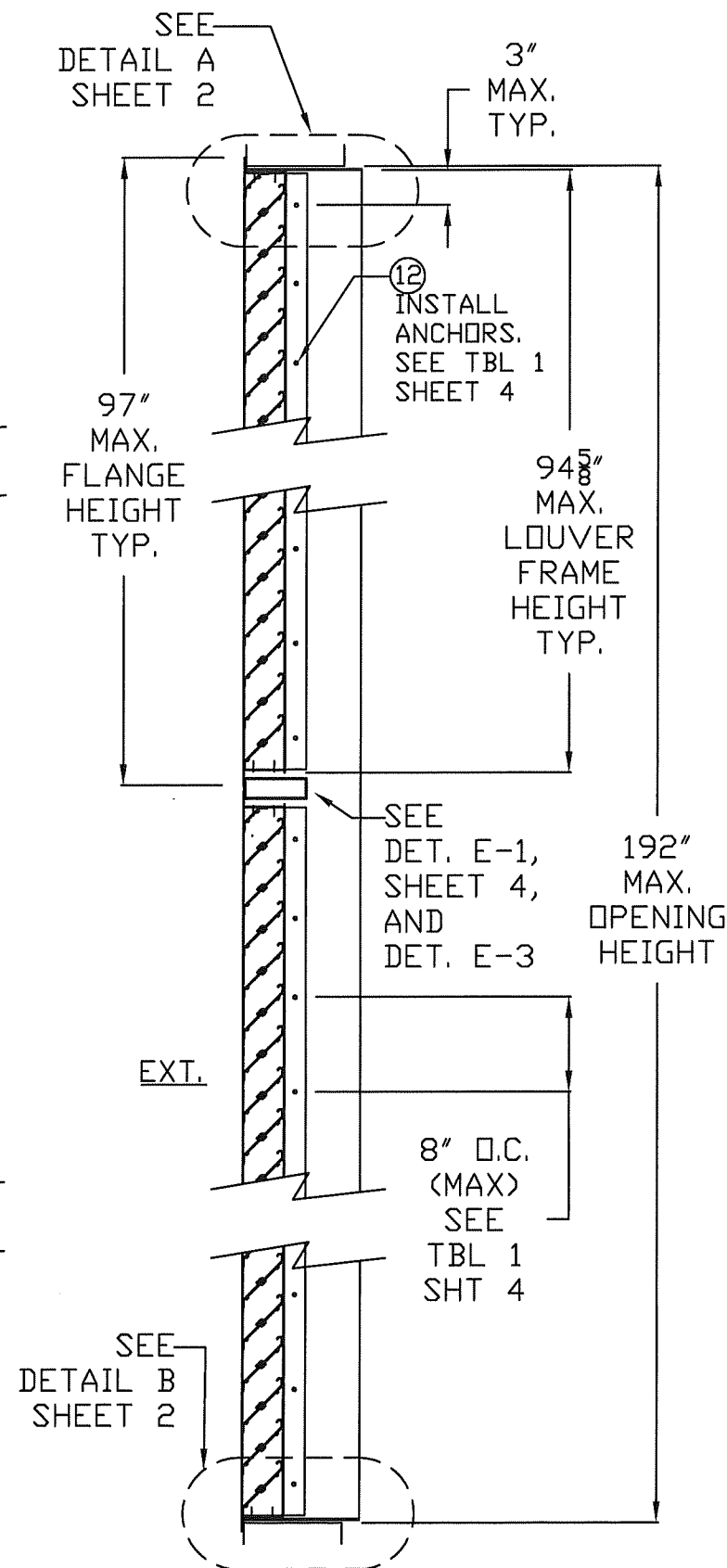
SCALE: NTS

SHEET 4 of 6

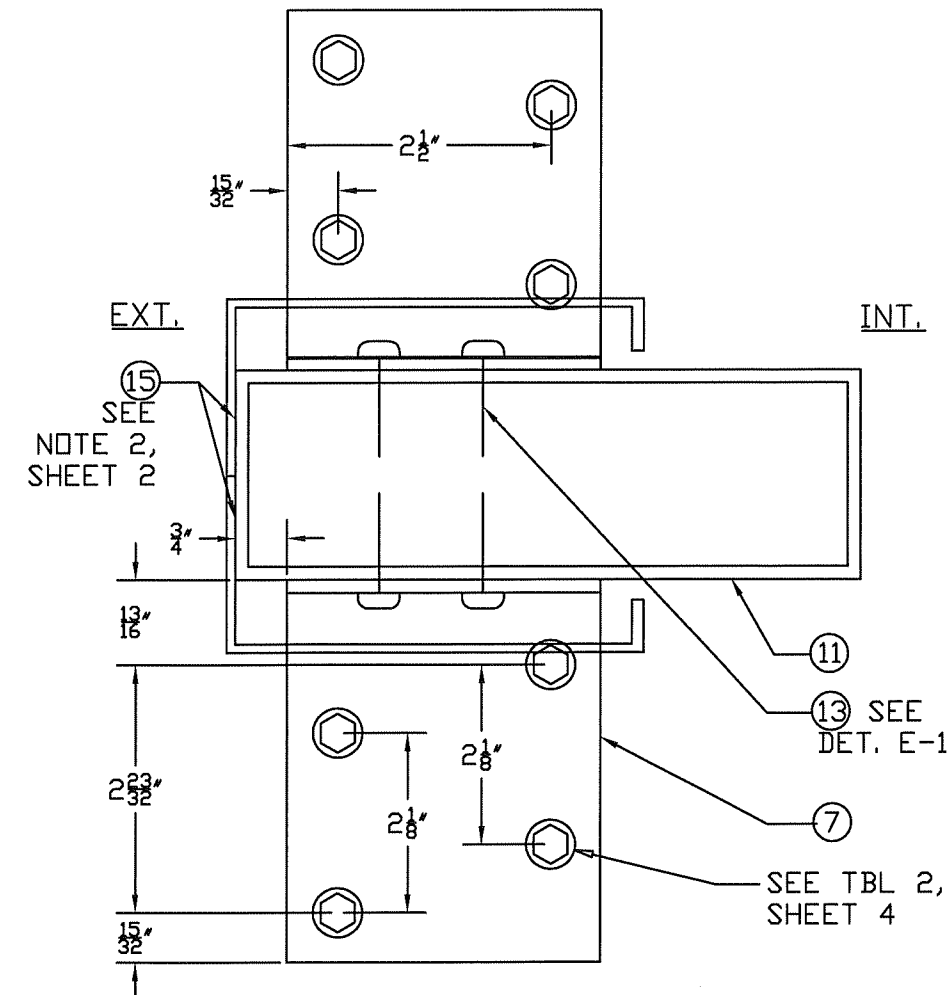




## TWO-HIGH MULLED CONDITION



BILL OF MATERIALS				BY	LAT	SV	SV
ITEM #	PART	DESCRIPTION	MATERIAL	DESCRIPTION	ORIGINAL RELEASE	CODE UPDATE - BLADE REVISION	CODE UPDATE
1	4907A	FRAME HEAD AND SILL	6063-T5				
2	5629	FRAME JAMB	6063-T5				
3	4904	TOP BLADE	6063-T5				
4	4903	BLADE	6063-T5				
5		1/2"-14 ALL THREADED ZINC COATED ROD WITH WASHER AND NUT BOTH ENDS	AISI 1038				
6	8149	1"X2"X1/8" (VERTICAL REINFORCING)	6063-T5				
7	10029	3"X3"X1/8" ANGLE, 3" LONG	6061-T6				
8		#10 P.P.H. X 1" SHEET METAL SCEW					
9		#8 H.W.H X 3/4" SHEET METAL SCREW					
10		1/4"-20 X 3/4" ZINC COATED BOLT WITH NUT					
11	10-0086	2"X6"X1/8" ALUMINUM MULL	6061-T6				
12		INSTALLATION ANCHOR, SEE TABLE 1, SHEET 4					
13		#12 P.P.H. X 1" TEK SHEET METAL SCEW					
14		#12 P.P.H. X 2" TEK SHEET METAL SCEW					
15		DOW 795 SILICONE BUILDING SEALANT					
16		SLEEVE: 0.85"X11.15"X1/8" FORMED FROM ALUM. SHEET	3003-H14				



DETAIL E-3.  
MULL CLIP TO SUBSTRATE  
(NO HEAD/SILL ATTACHMENT)

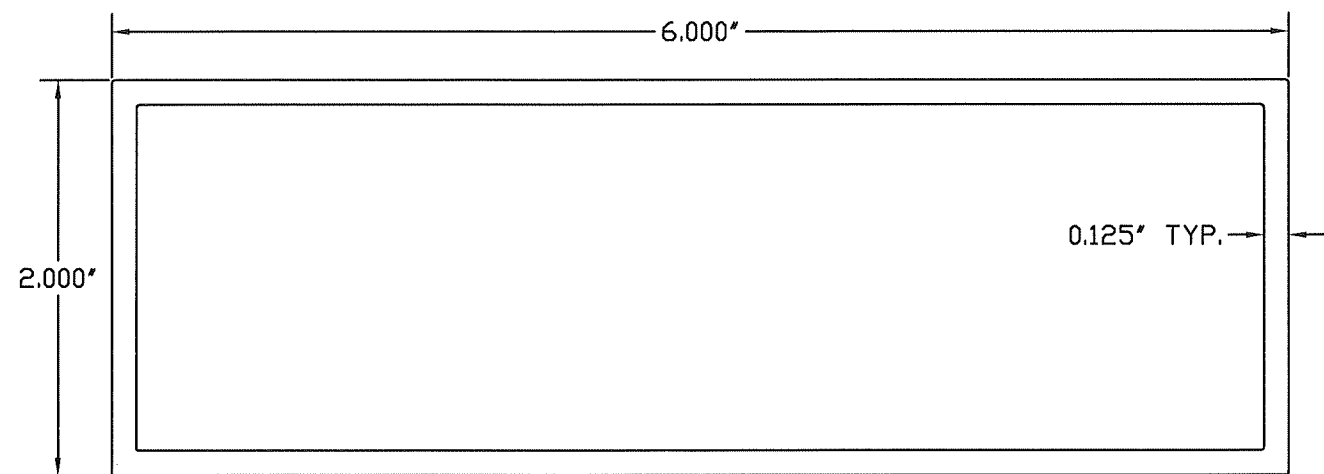
**PRODUCT REVISED**  
as complying with the Florida  
Building Code  
NOA-No. 23-1107.05  
Expiration Date 06/30/2025  
By *RT*  
Miami-Dade Product Control

SCOTT WOLTERS  
FLPE# 62354  
WOLTERS ENGINEERING, INC.  
(COA# 27194)  
15211 97TH ROAD N  
WEST PALM BEACH, FL 33411

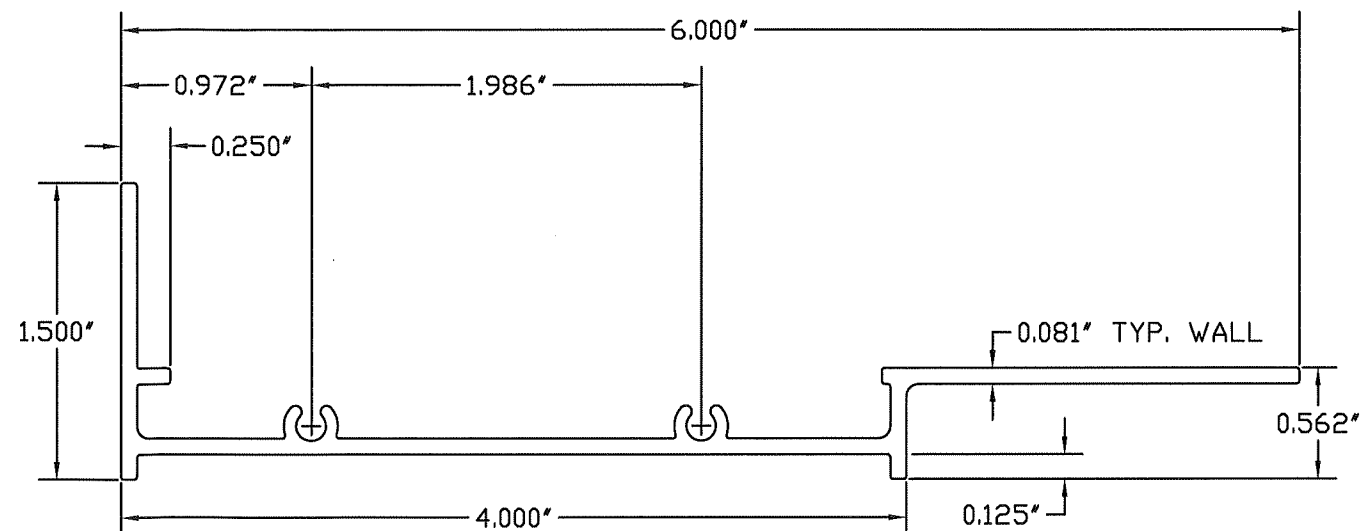
WLF-DA15 Aluminum Wall Louver  
Large Missile Impact Resistant

**Grille Tech, Inc.**  
5101 NW 36th AVE  
MIAMI, FL 33142  
PHONE: 305.537.0053  
FAX: 305.537.0064

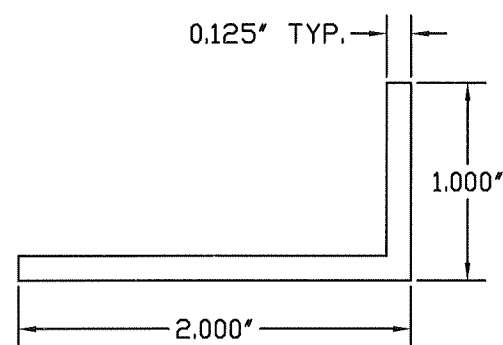
DRAWING # 0551-0402-10  
SCALE: NTS  
SHEET 5 of 6



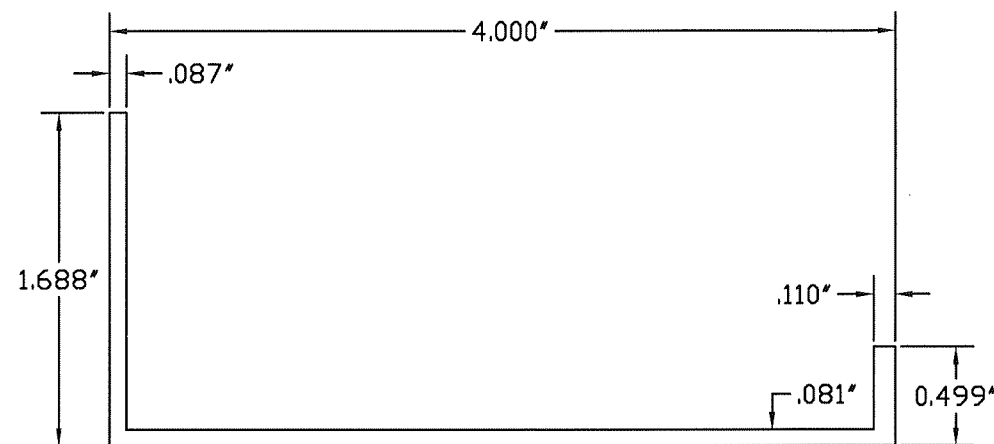
⑪ 2X6 MULL 6061-T6 ALUM.



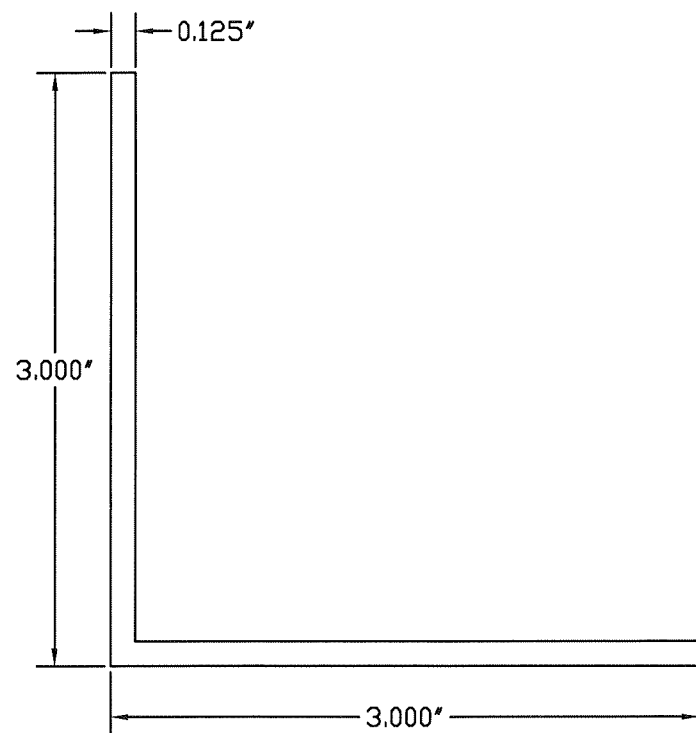
② FRAME JAMB 6063-T5 ALUM.



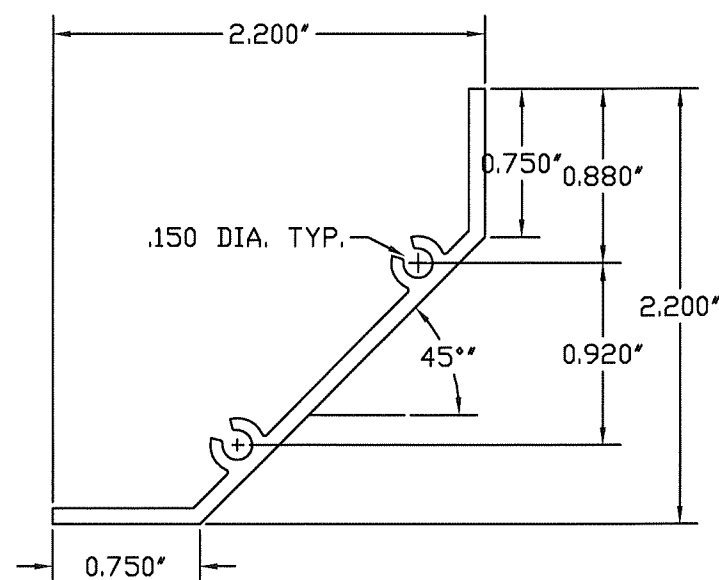
⑥ VERT. REINF. 6063-T5 ALUM.



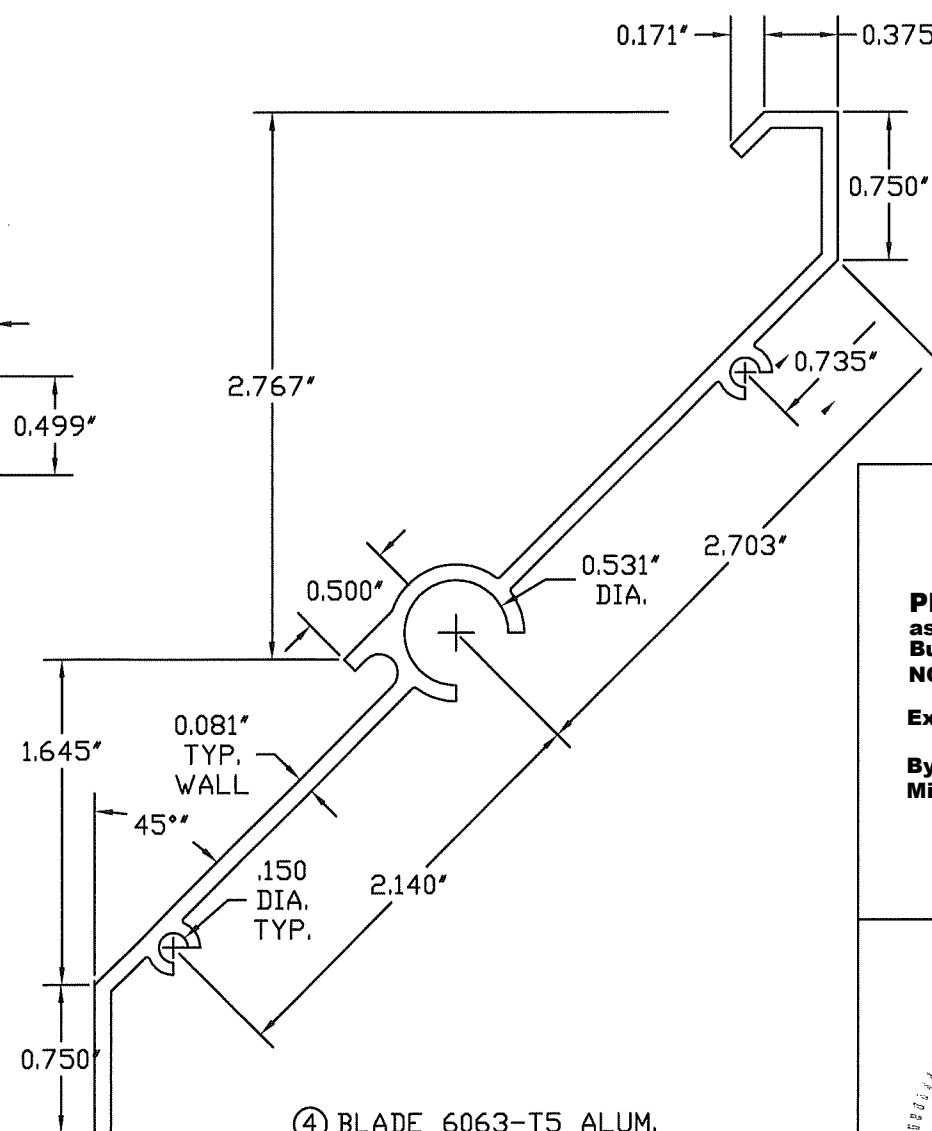
① HEAD AND SILL 6063-T5 ALUM.



⑦ 3X3 ANGLE 6061-T6 ALUM.



③ TOP BLADE 6063-T5 ALUM.



④ BLADE 6063-T5 ALUM.

**PRODUCT REVISED**  
as complying with the Florida  
Building Code  
NOA-No. 23-1107.05

Expiration Date 06/30/2025

By *[Signature]*  
Miami-Dade Product Control

**SCOTT WOLTERS**  
FLPE# 62354  
WOLTERS ENGINEERING, INC.  
(COA# 27194)  
15211 97TH ROAD, N  
WEST PALM BEACH, FL 33412

REV.	DATE	DESCRIPTION	BY
0	4/30/2009	ORIGINAL RELEASE	LAT
1	2/10/2015	CODE UPDATE - BLADE REVISION	SW
2	9/8/2017	CODE UPDATE	SW
3	2/22/22	CODE UPDATE	

**WLF-DA15 Aluminum Wall Louver**  
**Large Missile Impact Resistant**

**Grille Tech, Inc.**  
5101 NW 36th AVE  
MIAMI, FL 33142  
PHONE: 305.537.0053  
FAX: 305.537.0064

DRAWING # 0551-0402-10

SCALE: FULL

SHEET  
6 of 6