



DEPARTMENT OF REGULATORY AND ECONOMIC RESOURCES (RER)  
BOARD AND CODE ADMINISTRATION DIVISION

## NOTICE OF ACCEPTANCE (NOA)

MIAMI-DADE COUNTY  
PRODUCT CONTROL SECTION

11805 SW 26 Street, Room 208  
Miami, Florida 33175-2474  
T (786) 315-2590 F (786) 315-2599

[www.miamidade.gov/building](http://www.miamidade.gov/building)

**Amarr Garage Doors dba Entrematic**  
**165 Carriage Court**  
**Winston Salem, NC 27105**

**SCOPE:** This NOA is being issued under the applicable rules and regulations governing the use of construction materials. The documentation submitted has been reviewed and accepted by Miami-Dade County RER-Product Control Section to be used in Miami Dade County and other areas where allowed by the Authority Having Jurisdiction (AHJ).

This NOA shall not be valid after the expiration date stated below. The Miami-Dade County Product Control Section (In Miami Dade County) and/or the AHJ (in areas other than Miami Dade County) reserve the right to have this product or material tested for quality assurance purposes. If this product or material fails to perform in the accepted manner, the manufacturer will incur the expense of such testing and the AHJ may immediately revoke, modify, or suspend the use of such product or material within their jurisdiction. RER reserves the right to revoke this acceptance, if it is determined by Miami-Dade County Product Control Section that this product or material fails to meet the requirements of the applicable building code.

This product is approved as described herein and has been designed to comply with the Florida Building Code, including the High Velocity Hurricane Zone.

**DESCRIPTION: Model 2400 & 2000 Steel Sectional Garage Doors up to 16'-2" Wide – L.M.I.**

**APPROVAL DOCUMENT:** Drawing No. **IBC-2416-180-26-I**, titled "Model 2400 (24 GA), Model 2000 (20 GA)", sheets 1 through 3 of 3, dated 05/30/13, prepared by manufacturer, signed and sealed by Tomas L. Shelmerdine, P.E., bearing the Miami-Dade County Product Control Renewal stamp with the Notice of Acceptance number and expiration date by the Miami-Dade County Product Control Section.

**MISSILE IMPACT RATING: Large and Small Missile Impact Resistant**

**LABELING:** Each unit shall bear a permanent label with the manufacturer's name or logo, manufacturing address, model number, the positive and negative design pressure rating, indicate impact rated if applicable, installation instruction drawing reference number, approval number (NOA), the applicable test standards, and the statement reading 'Miami-Dade County Product Control Approved' is to be located on the door's side track, bottom angle, or inner surface of a panel.

**RENEWAL** of this NOA shall be considered after a renewal application has been filed and there has been no change in the applicable building code negatively affecting the performance of this product.

**TERMINATION** of this NOA will occur after the expiration date or if there has been a revision or change in the materials, use, and/or manufacture of the product or process. Misuse of this NOA as an endorsement of any product, for sales, advertising or any other purposes shall automatically terminate this NOA. Failure to comply with any section of this NOA shall be cause for termination and removal of NOA.

**ADVERTISEMENT:** The NOA number preceded by the words Miami-Dade County, Florida, and followed by the expiration date may be displayed in advertising literature. If any portion of the NOA is displayed, then it shall be done in its entirety.

**INSPECTION:** A copy of this entire NOA shall be provided to the user by the manufacturer or its distributors and shall be available for inspection at the job site at the request of the Building Official.

This NOA **revises & renews NOA No. 20-1015.34** and consists of this page 1 and evidence page E-1, E-2 and E-3, as well as approval document mentioned above.

The submitted documentation was reviewed by **Ishaq I. Chanda, P.E.**

 01/25/24



**NOA No. 23-1114.01**  
**Expiration Date: February 13, 2029**  
**Approval Date: January 25, 2024**  
Page 1

**Amarr Garage Doors dba Entrematic**

**NOTICE OF ACCEPTANCE: EVIDENCE SUBMITTED**

**1. EVIDENCE SUBMITTED UNDER PREVIOUS NOA's**

**A. DRAWINGS**

1. Manufacturer's die drawings and sections.  
*(Submitted under NOA No. 13-1113.02)*
2. Drawing No. **IBC-2416-180-26-I**, titled "Model 2400 (24 GA), Model 2000 (20 GA)", sheets 1 through 3 of 3, dated 05/30/13, prepared by manufacturer, signed and sealed by Thomas L. Shelmerdine, P.E.  
*(Submitted under NOA No. 13-1113.02)*

**B. TESTS**

1. Test reports on: 1) Uniform Static Air Pressure Test, Loading per FBC TAS 202-94  
2) Large Missile Impact Test per FBC, TAS 201-94  
3) Cyclic Wind Pressure Loading per FBC, TAS 203-94  
4) Tensile Test per ASTM E8  
5) Forced Entry Resistance Test per FBC, TAS 202-94  
along with marked-up drawings and installation diagram of 16'-2"x 8' 24 ga. steel garage door Model 2400, prepared by American Test Lab, Inc., Test Report No. **ATLNC 0618.01-13**, dated 07/10/13, and addendum letter dated 08/19/13, both signed and sealed by David W. Johnson, P.E.  
*(Submitted under NOA No. 13-1113.02)*
2. Test report on Evaluation of Painted or Coated Specimens Subjected to Corrosive Environments per ASTM D1654-08 & ASTM B117-11, prepared by Intertek/ATI, Test Report No. **C5463.01-106-18**, dated 04/03/13, signed and sealed by Joseph A. Reed, P.E.  
*(Submitted under NOA No. 13-0503.06)*

**C. CALCULATIONS**

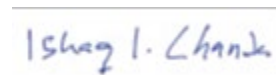
1. Anchor calculations prepared by Structural Solutions, P.A., dated 08/20/13, signed and sealed by Thomas L. Shelmerdine, P.E.  
*(Submitted under NOA No. 13-1113.02)*

**D. QUALITY ASSURANCE**

1. Miami-Dade Department of Regulatory and Economic Resources (RER)

**E. MATERIAL CERTIFICATIONS**

1. None.



---

**Ishaq I. Chanda, P.E.**  
**Product Control Unit Supervisor**  
**NOA No. 23-1114.01**  
**Expiration Date: February 13, 2029**  
**Approval Date: January 25, 2024**

**NOTICE OF ACCEPTANCE: EVIDENCE SUBMITTED**

**1. EVIDENCE SUBMITTED UNDER PREVIOUS NOA's (CONTINUED)**

**F. STATEMENTS**

1. Statement letter of conformance, complying with **FBC 6<sup>th</sup> Edition (2017)** and of no financial interest, dated 09/11/17, issued by Structural Solutions, PA., signed and sealed by Thomas L. Shelmerdine, P.E.  
*(Submitted under NOA No. 18-1128.06)*

**G. OTHERS**

1. Notice of Acceptance No. **17-1010.10**, issued to Amarr Garage Doors for their Model 2400 & 2000 Steel Sectional Garage Doors up to 16'-2" Wide, approved on 12/27/17 and expiring on 02/13/19.

**2. EVIDENCE SUBMITTED under previous approval**

**A. DRAWINGS**

1. None.

**B. TESTS**

1. None.

**C. CALCULATIONS**

1. None.

**D. QUALITY ASSURANCE**

1. Miami-Dade Department of Regulatory and Economic Resources (RER)

**E. MATERIAL CERTIFICATIONS**

1. None.

**F. STATEMENTS**

1. Statement letter of conformance, complying with **FBC 7<sup>th</sup> Edition (2020)** and of no financial interest, dated August 27, 2020, issued by Structural Solutions, P.A., signed and sealed by Thomas L. Shelmerdine, P.E.

**G. OTHERS**

1. Notice of Acceptance No. **18-1128.06**, issued to Amarr Garage Doors dba Entrematic for their Model 2400 & 2000 Steel Sectional Garage Doors up to 16'-2" Wide – L.M.I., approved on 12/27/18 and expiring on 02/13/24.



---

**Ishaq I. Chanda, P.E.**  
**Product Control Unit Supervisor**  
**NOA No. 23-1114.01**  
**Expiration Date: February 13, 2029**  
**Approval Date: January 25, 2024**

**Amarr Garage Doors dba Entrematic**

**NOTICE OF ACCEPTANCE: EVIDENCE SUBMITTED**

**3. NEW EVIDENCE SUBMITTED**

**A. DRAWINGS**

1. Drawing No. **IBC-2416-180-26-I**, titled “Model 2400 (24 GA), Model 2000 (20 GA)”, sheets 1 through 3 of 3, dated 05/30/13, prepared by manufacturer, signed and sealed by Thomas L. Shelmerdine, P.E.

**B. TESTS**

1. None.

**C. CALCULATIONS**

1. None.

**D. QUALITY ASSURANCE**

1. Miami-Dade Department of Regulatory and Economic Resources (RER)

**E. MATERIAL CERTIFICATIONS**

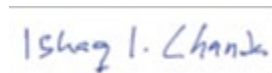
1. None.

**F. STATEMENTS**

1. Statement letter of conformance, complying with **FBC 8<sup>th</sup> Edition (2023)** and of no financial interest, dated 10/27/2023, issued by Structural Solutions, P.A., signed and sealed by Thomas L. Shelmerdine, P.E.

**G. OTHERS**

1. This NOA **revises & renews NOA No. 20-1015.34** and updates to FBC 2023 expiring on 02/13/29.



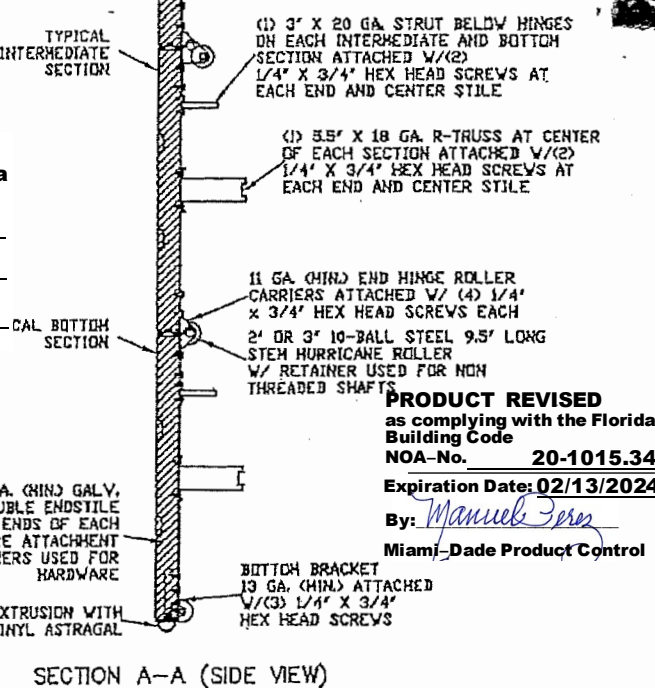
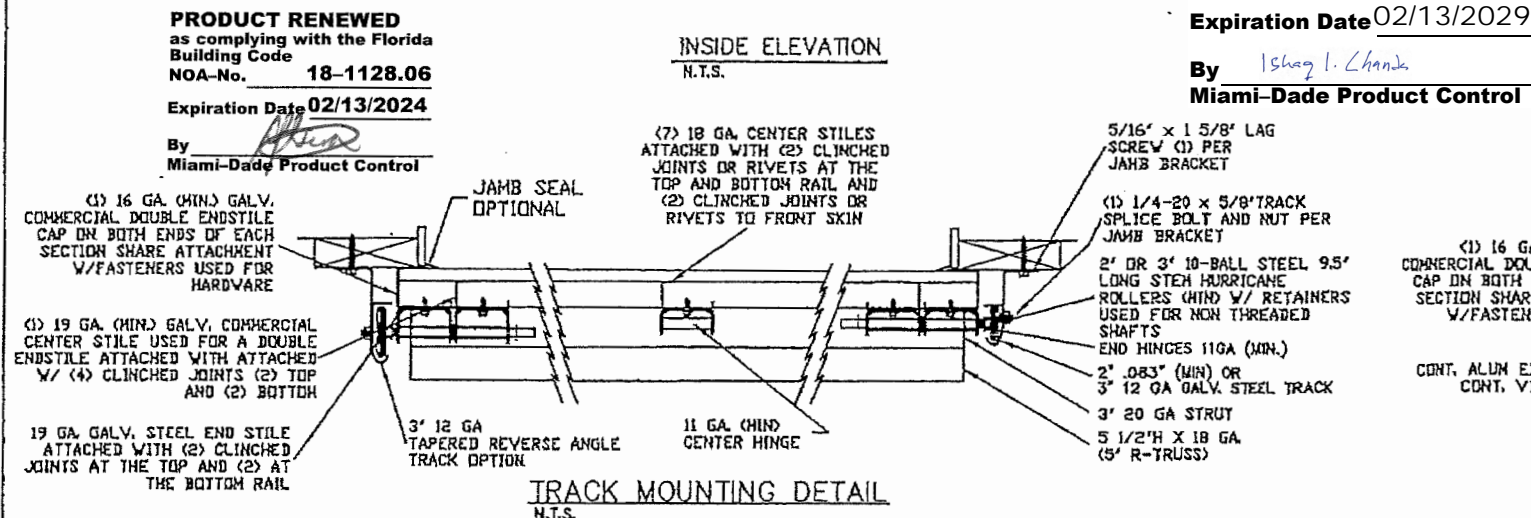
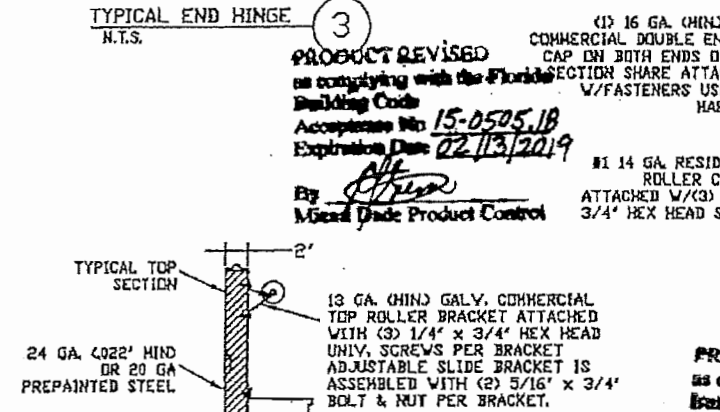
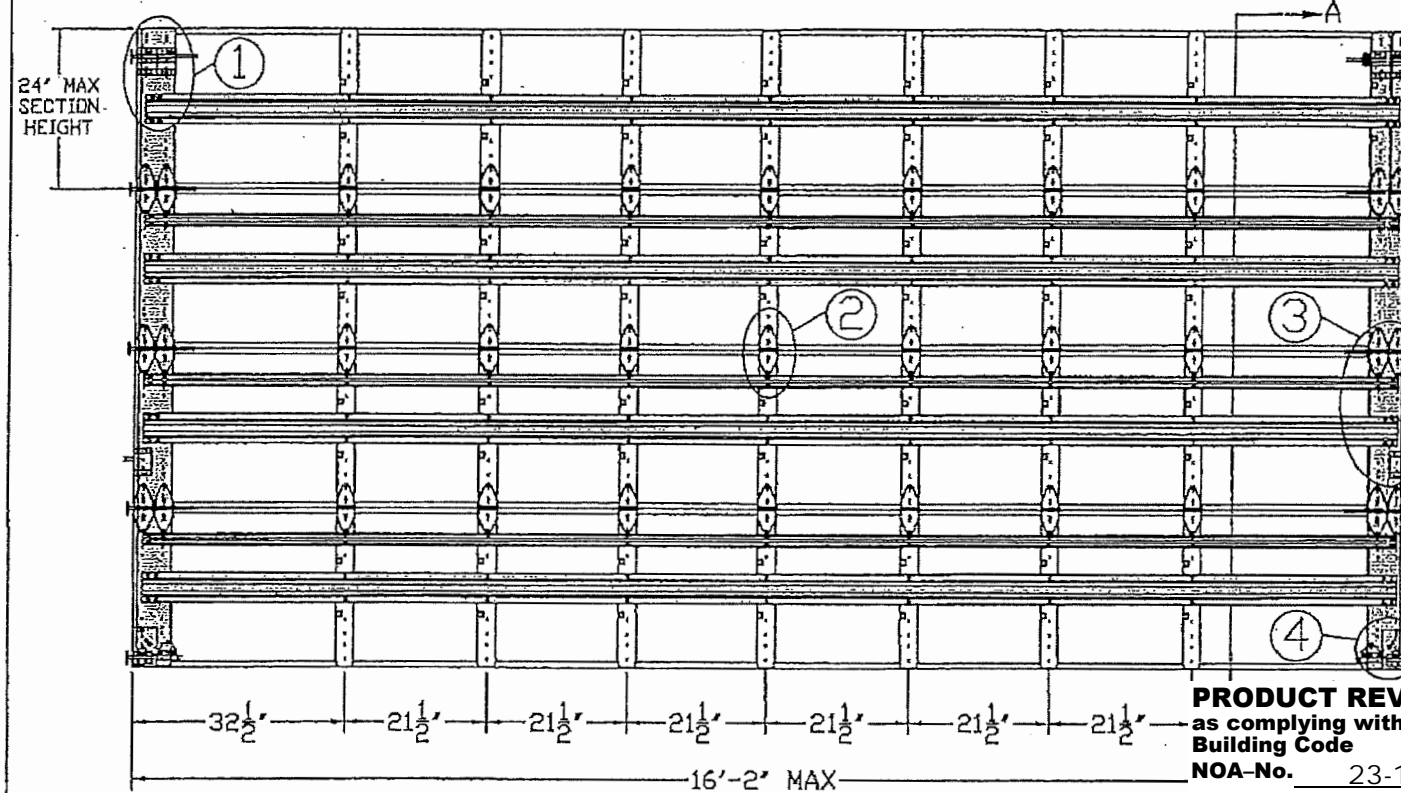
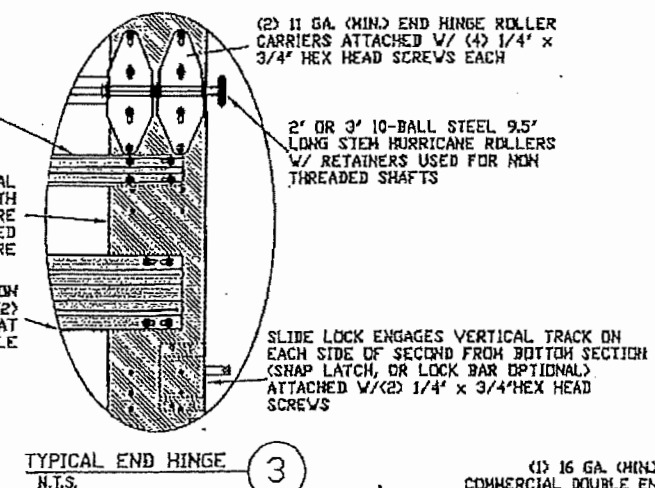
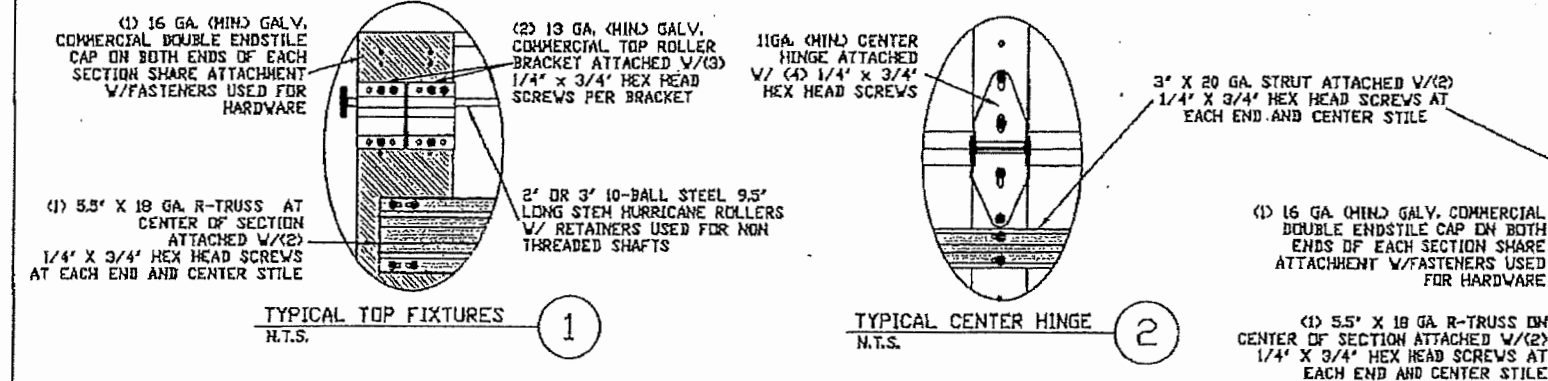
---

**Ishaq I. Chanda, P.E.**  
**Product Control Unit Supervisor**  
**NOA No. 23-1114.01**  
**Expiration Date: February 13, 2029**  
**Approval Date: January 25, 2024**



# LARGE MISSILE IMPACT RESISTANT

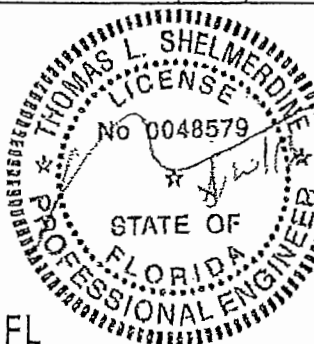
Approved as complying  
Florida Building Code  
Date 02/13/2019  
NOA# 23-1113.02  
Miami-Dade Product Control By



**PRODUCT REVISED**  
as complying with the Florida Building Code  
Acceptance No. 17-1010.10  
Expiration Date 02/13/2019  
By Shag I. Chanda  
Miami-Dade Product Control

REV	DESCRIPTION OF REVISIONS	DATE	BY

MAX SIZES WIDTH 16'-2" HEIGHT 24'	DESIGN LOADS +45.0 PSF -52.0 PSF	LARGE MISSILE IMPACT RESISTANCE	<p>Thomas L. Shelmerdine, PE (FL PE #0048579) Structural Solutions, PA (FL Firm #29412)</p> <p>FL</p>		<p>dlb Structural Solutions, Inc. 5921-G W. Friendly Ave., Greensboro, NC 27410</p>

*Amarr*

165 CARRIAGE COURT WINSTON-SALEM, NC. 27105 WWW.AMARR.COM

MODEL 2400 (24 GA)					DRAWING NUMBER IEC-2416-180-26-1
MODEL 2000 (20 GA)					

SIZE	DRAWN BY	REL	DATE	5/30/13	DRAWING NUMBER IEC-2416-180-26-1
B	CHECKED BY	REL	DATE	5/30/13	

SHEET 1 OF 3



ITW BUILDEX 1/4"-14  
X 3/4" SELF-TAPPING  
SCREWS (TEKS)

12 GA. DR 3/16"  
STEEL (SEE BELOW)

1/8" NOM X 1" LONG  
FILLET WELD (E60xx  
ELECTRODES MIN)

1/4" LONG TACK  
WELD SAME SPACING  
AS FILLET WELD

**PRODUCT REVISED**  
as complying with the Florida  
Building Code

NOA-No. 23-1114.01

Expiration Date 02/13/2029

By Ishaq I. Chank

Miami-Dade Product Control

REVERSE ANGLE MOUNT SHOWN  
BRACKET, CONTINUOUS AND TAPERED  
ANGLE MOUNT AVAILABLE

12 GA STEEL FRAMING  
232 LBS/SCREW ALLOWABLE LOAD - 3' FROM ENDS AND 6' O.C.  
REFER TO NOTES 1, 2 AND 5

3/16" STEEL FRAMING  
569 LBS/SCREW ALLOWABLE LOAD - 6' FROM ENDS AND 18' O.C.  
REFER TO NOTES 1, 2 AND 5

TAPERED REVERSE ANGLE MOUNT SHOWN  
BRACKET, CONTINUOUS AND REVERSE  
ANGLE MOUNT AVAILABLE

STEEL FRAMING 12GA OR GREATER  
1590 LBS/IN ALLOWABLE LOAD - 6' FROM ENDS AND 24' O.C.  
REFER TO NOTES 1, 2, 5, 6, 7, 8 AND 9

2-5/8" THICK  
WALL MIN.  
(1.5 X EMBEDMENT)

2000 PSI MIN.  
CONCRETE

SIMPSON STRONG-TIE  
3/8" WEDGE-ALL  
EXPANSION ANCHOR WITH  
7/8" WASHER, 1-3/4" MIN.  
EMBEDMENT

CONTINUOUS ANGLE MOUNT SHOWN  
BRACKET MOUNT AVAILABLE

2000 PSI CONCRETE OR GREATER  
336 LBS/EXPANSION ANCHOR ALLOWABLE LOAD - 6' FROM ENDS AND 10' O.C.  
REFER TO NOTES 1, 2, 3, 4 AND 5

2-5/8" THICK  
WALL MIN.  
(1.5 X EMBEDMENT)

2000 PSI MIN.  
CONCRETE

SIMPSON STRONG-TIE  
3/8" SLEEVE-ALL  
SLEEVE ANCHOR WITH  
7/8" WASHER, 1-1/2" MIN.  
EMBEDMENT

BRACKET MOUNT SHOWN  
CONTINUOUS MOUNT AVAILABLE

2000 PSI CONCRETE OR GREATER  
336 LBS/SLEEVE ANCHOR ALLOWABLE LOAD - 6' FROM ENDS AND 10' O.C.  
REFER TO NOTES 1, 2, 3, 4 AND 5

**PRODUCT REVISED**  
as complying with the Florida  
Building Code

Acceptance No. 17-1010-10

Expiration Date 2/13/19

By Ishaq I. Chank  
Miami-Dade Product Control

**PRODUCT REVISED**  
as complying with the Florida  
Building Code

NOA-No. 20-1015.34

Expiration Date 02/13/2024

By Manuel Fern

Miami-Dade Product Control

**PRODUCT RENEWED**  
as complying with the Florida  
Building Code

NOA-No. 18-1128.06

Expiration Date 02/13/2024

By [Signature]  
Miami-Dade Product Control

### ALTERNATIVE ATTACHMENT NOTES

1. ANCHORS TO BE EVENLY SPACED BETWEEN THE HEADER AND FLOOR.
2. FIRST (BOTTOM) ANCHOR STARTING AT NO MORE THAN HALF OF THE MAXIMUM ON-CENTER DISTANCE. HIGHEST ANCHOR INSTALLED AT LEAST AS HIGH AS THE DOOR OPENING.
3. MIN. EDGE DISTANCE OF 3" REQUIRED.
4. USE WASHERS PROVIDED BY THE ANCHOR MANUFACTURER.
5. SUPPORTING STRUCTURAL ELEMENTS SHALL BE DESIGNED BY A REGISTERED PROFESSIONAL ENGINEER FOR WIND LOADS IN ADDITION TO OTHER LOADS.
6. MOST GARAGE DOOR TRACK IS GALVANIZED STEEL. USE ALL NECESSARY PRECAUTIONS WHEN WELDING GALVANIZED STEEL.
7. ALL WELDS SHOULD BE PERFORMED BY A CERTIFIED WELDER OR INSPECTED BY A CERTIFIED WELDING INSPECTOR TO VERIFY THE INTEGRITY OF THE WELD.
8. FILLET WELDS TO HAVE A STRAIGHT OR CONVEX FACE SURFACE.
9. TACK WELD TOE OF ANGLE AT SAME SPACING TO PREVENT ROTATION OF TRACK ANGLE.

### WOOD JAMB ATTACHMENT TO STRUCTURE (OPTIONAL)

#### 2 X 6 VERTICAL JAMB ATTACHMENT TO WOOD FRAME STRUCTURE

5/16" X 3" LAG SCREWS STARTING 6" FROM ENDS  
THEN 12" O.C. (1 1/2" EMBEDMENT)

#### 2 X 6 VERTICAL JAMB ATTACHMENT TO 2,000 PSI CONCRETE

HILTI KWIK BOLT 3/8" X 4" STARTING 6" FROM ENDS  
THEN 24" O.C. (2 1/2" EMBEDMENT)

HILTI SLEEVE ANCHOR 3/8" X 2-3/4" STARTING 6" FROM ENDS  
THEN 12" O.C. (1 1/4" EMBEDMENT)

ITW/RAMSET REDHEAD (TRU-BOLT) 3/8" X 4" STARTING 6" FROM ENDS  
THEN 22" O.C. (2 1/2" EMBEDMENT)

#### 2 X 6 VERTICAL JAMB ATTACHMENT TO HOLLOW C-90 BLOCK

SIMPSON 1/4" X 3" TITEN SCREWS STARTING 6" FROM ENDS,  
USE PAIRS OF FASTENERS (3" APART)

AT 8" O.C. (1 1/2" EMBEDMENT)

HILTI 1/4" X 2-3/4" KWIK-CON II+ SCREWS STARTING 6" FROM ENDS,  
USE PAIRS OF FASTENERS (3" APART) AT 8" O.C. (1 1/4" EMBEDMENT)

#### 2 X 6 VERTICAL JAMB ATTACHMENT TO GROUTED C-90 BLOCK (2000 PSI GROUT)

HILTI SLEEVE ANCHOR 3/8" X 2-3/4" STARTING 6" FROM ENDS  
THEN 14" O.C. (1 1/4" EMBEDMENT)

(OR, USE FASTENERS FOR HOLLOW C-90 BLOCK)

THEN 14" O.C. (1 1/4" EMBEDMENT)

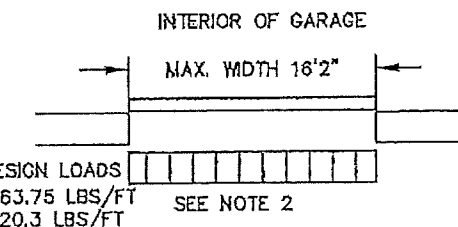
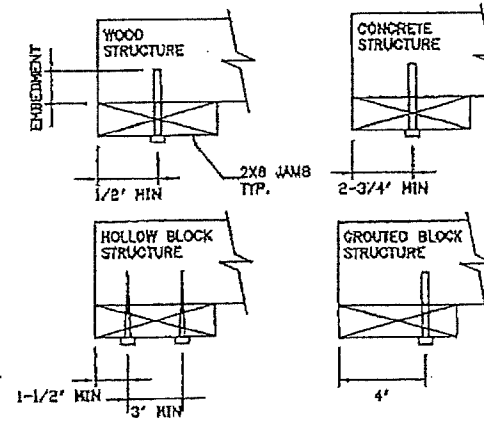
(OR, USE FASTENERS FOR HOLLOW C-90 BLOCK)

THEN 14" O.C. (1 1/4" EMBEDMENT)

(OR, USE FASTENERS FOR HOLLOW C-90 BLOCK)

\*LAGS AND BOLTS CAN BE COUNTERSUNK TO PROVIDE A FLUSH MOUNTING SURFACE.

\*PREPARATION OF WOOD JAMBS BY OTHERS



**PRODUCT REVISED**

as complying with the Florida  
Building Code

Acceptance No. 15-0505-18

Expiration Date 02/13/2019

By [Signature]  
Miami-Dade Product Control

Approved as complying with the  
Florida Building Code

Date: 02/13/2019

NOA# 13-1113.02

By [Signature]  
Miami-Dade Product Control

REV	DESCRIPTION OF REVISIONS	DATE	BY

MAX. SIZES  
WIDTH 16'-2"  
HEIGHT 24'

DESIGN LOADS  
+45.0 PSF  
-52.0 PSF

LARGE MISSILE  
IMPACT  
RESISTANCE

Thomas L. Shelmerdine, P.E. (FL PE #0048579)  
Structural Solutions, PA (FL Firm #29412)

STATE OF FLORIDA  
PROFESSIONAL ENGINEER  
FL

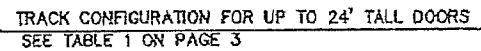
**Amarr**

165 CARRIAGE COURT WINSTON-SALEM, NC. 27103 WWW.AMARR.COM

MODEL 2400 (24 GA)  
MODEL 2000 (20 GA)

SIZE	DRAWN BY	R/R	DATE	5/30/13	DRAWING NUMBER
B	CHECKED BY	R/R	DATE	5/30/13	IBC-2416-180-26-I

SHEET 2 OF 3



DOOR		TRACK ATTACHMENT																					TYPICAL		
HEIGHT		A	B	C	D	E	F	G	H	I	J	K	L	M	N	O	P	Q	R	S	T	U	V	W	SPLICE
7'	0"	3.5"	10"	22"	34"	46"	58"	70"																	76"
7'	6"	3.5"	10"	22"	34"	46"	58"	70"																	82"
8'	0"	3.5"	10"	22"	34"	46"	58"	70"	82"																88"
8'	6"	3.5"	10"	22"	34"	46"	58"	70"	82"																94"
9'	0"	3.5"	10"	22"	34"	46"	58"	70"	82"	94"															100"
9'	6"	3.5"	10"	22"	34"	46"	58"	70"	82"	94"															106"
10'	0"	3.5"	10"	22"	34"	46"	58"	70"	82"	94"	106"														112"
11'	0"	3.5"	10"	22"	34"	46"	58"	70"	82"	94"	106"	118"													124"
12'	0"	3.5"	10"	22"	34"	46"	58"	70"	82"	94"	106"	118"	130"												136"
13'	0"	3.5"	10"	22"	34"	46"	58"	70"	82"	94"	106"	118"	130"	142"											148"
14'	0"	3.5"	10"	22"	34"	46"	58"	70"	82"	94"	106"	118"	130"	142"	154"										160"
15'	0"	3.5"	10"	22"	34"	46"	58"	70"	82"	94"	106"	118"	130"	142"	154"	166"									172"
16'	0"	3.5"	10"	22"	34"	46"	58"	70"	82"	94"	106"	118"	130"	142"	154"	166"	178"								184"
17'	0"	3.5"	10"	22"	34"	46"	58"	70"	82"	94"	106"	118"	130"	142"	154"	166"	178"	190"							196"
18'	0"	3.5"	10"	22"	34"	46"	58"	70"	82"	94"	106"	118"	130"	142"	154"	166"	178"	190"	202"						208"
19'	0"	3.5"	10"	22"	34"	46"	58"	70"	82"	94"	106"	118"	130"	142"	154"	166"	178"	190"	202"	214"					220"
20'	0"	3.5"	10"	22"	34"	46"	58"	70"	82"	94"	106"	118"	130"	142"	154"	166"	178"	190"	202"	214"	226"				232"
21'	0"	3.5"	10"	22"	34"	46"	58"	70"	82"	94"	106"	118"	130"	142"	154"	166"	178"	190"	202"	214"	226"	238"			244"
22'	0"	3.5"	10"	22"	34"	46"	58"	70"	82"	94"	106"	118"	130"	142"	154"	166"	178"	190"	202"	214"	226"	238"	250"		256"
23'	0"	3.5"	10"	22"	34"	46"	58"	70"	82"	94"	106"	118"	130"	142"	154"	166"	178"	190"	202"	214"	226"	238"	250"	262"	268"
24'	0"	3.5"	10"	22"	34"	46"	58"	70"	82"	94"	106"	118"	130"	142"	154"	166"	178"	190"	202"	214"	226"	238"	250"	262"	280"

PRODUCT REVISED  
as complying with the Florida  
Building Code  
Acceptance No 17-1010-10  
Expiration Date 2/13/19  
By [Signature]  
[Signature]

PRODUCT REVISED  
 as complying with the Florida  
 Building Code  
 Acceptance No 15-0505-1B  
 Expiration Date 02/13/2019  
 By [Signature]  
 Miami Dade Product Control

Approved as complying with the  
Florida Building Code  
Date 02/13/2014  
NOAH 12-1165.02  
Minimal Data Product Control  
By [Signature]

REV	DESCRIPTION OF REVISIONS	DATE	BY

<p><b>MAX SIZES</b>          WIDTH 16'-2"          HEIGHT 24'</p> <p><b>DESIGN LOADS</b>          +45.0 PSF          -52.0 PSF</p> <p><b>LARGE MISSILE          IMPACT          RESISTANCE</b></p>	<p>Thomas L. Shelmerdine, PE (FL PE #0048579)          Structural Solutions of North Carolina, Inc.          5921-G W. Friendly Ave., Greensboro, NC 27410</p> <p><b>FL</b></p> <p><b>THOMAS L. SHELMERDINE</b>  <b>LICENSE</b>          NO 0048579          STATE OF          FLORIDA          PROFESSIONAL ENGINEER</p>
--	---

*Amarr*

163 CARRIAGE COURT WINSTON-SALEM, NC 27103 WWW.AMARR.COM

<p><b>MODEL 2400 (24 GA)</b>  <b>MODEL 2000 (20 GA)</b></p>			
---	--	--	--

SIZE	DRAWN BY	RLR	DATE 5/30/13	DRAWING NUMBER IEC-2416-180-26-I
B	CHECKED BY	RLR	DATE 5/30/13	

SHEET 3 OF 3