



DEPARTMENT OF REGULATORY AND ECONOMIC RESOURCES (RER)
BOARD AND CODE ADMINISTRATION DIVISION

NOTICE OF ACCEPTANCE (NOA)

MIAMI-DADE COUNTY
PRODUCT CONTROL SECTION
11805 SW 26 Street, Room 208
Miami, Florida 33175-2474
T (786) 315-2590 F (786) 315-2599
www.miamidade.gov/building

Amarr Garage Doors dba Entrematic
165 Carriage Court
Winston Salem, NC 27105

SCOPE: This NOA is being issued under the applicable rules and regulations governing the use of construction materials. The documentation submitted has been reviewed and accepted by Miami-Dade County RER-Product Control Section to be used in Miami Dade County and other areas where allowed by the Authority Having Jurisdiction (AHJ).

This NOA shall not be valid after the expiration date stated below. The Miami-Dade County Product Control Section (In Miami Dade County) and/or the AHJ (in areas other than Miami Dade County) reserve the right to have this product or material tested for quality assurance purposes. If this product or material fails to perform in the accepted manner, the manufacturer will incur the expense of such testing and the AHJ may immediately revoke, modify, or suspend the use of such product or material within their jurisdiction. RER reserves the right to revoke this acceptance, if it is determined by Miami-Dade County Product Control Section that this product or material fails to meet the requirements of the applicable building code.

This product is approved as described herein and has been designed to comply with the Florida Building Code, including the High Velocity Hurricane Zone.

DESCRIPTION: Model "1200 Amarr Heritage 3000 (Dp: +57.0, -67.5 psf)" EPS Insulated Steel Sectional Garage Door up to 9'-0" Wide with Optional Impact Resistant Window – L.M.I.

APPROVAL DOCUMENT: Drawing No. **IRC-1209-190-15-F**, titled "Model #1200 Amarr Heritage 3000", sheets 1 through 3 of 3, dated 03/11/22, prepared by manufacturer, signed and sealed by Thomas L. Shelmerdine, P.E., bearing the Miami-Dade County Product Control Revision stamp with the Notice of Acceptance number and expiration date by the Miami-Dade County Product Control Section.

MISSILE IMPACT RATING: Large and Small Missile Impact Resistant

LABELING: Each unit shall bear a permanent label with the manufacturer's name or logo, manufacturing address, model number, the positive and negative design pressure rating, indicate impact rated if applicable, installation instruction drawing reference number, approval number (NOA), the applicable test standards, and the statement reading 'Miami-Dade County Product Control Approved' is to be located on the door's side track, bottom angle, or inner surface of a panel.

RENEWAL of this NOA shall be considered after a renewal application has been filed and there has been no change in the applicable building code negatively affecting the performance of this product.

TERMINATION of this NOA will occur after the expiration date or if there has been a revision or change in the materials, use, and/or manufacture of the product or process. Misuse of this NOA as an endorsement of any product, for sales, advertising or any other purposes shall automatically terminate this NOA. Failure to comply with any section of this NOA shall be cause for termination and removal of NOA.

ADVERTISEMENT: The NOA number preceded by the words Miami-Dade County, Florida, and followed by the expiration date may be displayed in advertising literature. If any portion of the NOA is displayed, then it shall be done in its entirety.

INSPECTION: A copy of this entire NOA shall be provided to the user by the manufacturer or its distributors and shall be available for inspection at the job site at the request of the Building Official.

This NOA **revises & renews NOA No. 22-0414.09** and consists of this page 1 and evidence page E-1, E-2, E-3 and E-4, as well as approval document mentioned above.

The submitted documentation was reviewed by **Ishaq I. Chanda, P.E.**

Ishaq I. Chanda 01/25/24



NOA No. 23-1114.11
Expiration Date: June 13, 2029
Approval Date: January 25, 2024
Page 1

Amarr Garage Doors dba Entrematic

NOTICE OF ACCEPTANCE: EVIDENCE SUBMITTED

1. EVIDENCE SUBMITTED UNDER PREVIOUS NOA's

A. DRAWINGS

1. Manufacturer's die drawings and sections.
(Submitted under NOA No. 19-0205.04)
2. Drawing No. **IRC-1209-190-15-F**, titled "Model #1200 Amarr Heritage & Oak Summit 3000; Short, Long, Flush and Oak Summit Panels", sheets 1 through 3 of 3, dated 08/01/18, prepared by manufacturer, signed and sealed by Thomas L. Shelmerdine, P.E.
(Submitted under NOA No. 19-0205.04)

B. TESTS

1. Test reports on: 1) Uniform Static Air Pressure Test, Loading per FBC TAS 202-94
2) Large Missile Impact Test per FBC, TAS 201-94
3) Cyclic Wind Pressure Loading per FBC, TAS 203-94
4) Tensile Test per ASTM E8
5) Forced Entry Resistance Test per FBC, TAS 202-94
along with marked-up drawings and installation diagram of 9'x 7' 24 ga. Model 1200 Steel Garage Doors, prepared by American Test Lab, Inc., Test Report No. **ATLNC 0327.01-18**, dated 08/07/18, signed and sealed by David W. Johnson, P.E.
(Submitted under NOA No. 19-0205.04)
2. Test report on Evaluation of Painted or Coated Specimens (G-30 Galvanized with Polyester Top Coat) Subjected to Corrosive Environments per ASTM D1654-08 and ASTM B117-11, prepared by Intertek/ATI, Test Report No. **C5463.01-106-18**, dated 04/03/13, signed and sealed by Joseph A. Reed, P.E.
(Submitted under NOA No. 19-0205.04)

C. CALCULATIONS

1. Anchor calculations prepared by Structural Solutions, P.A., dated 01/08/19, signed and sealed by Thomas L. Shelmerdine, P.E.
(Submitted under NOA No. 19-0205.04)

D. QUALITY ASSURANCE

1. Miami-Dade Department of Regulatory and Economic Resources (RER).

Ishaq I. Chanda

Ishaq I. Chanda, P.E.
Product Control Unit Supervisor
NOA No. 23-1114.11
Expiration Date: June 13, 2029
Approval Date: January 25, 2024

Amarr Garage Doors dba Entrematic

NOTICE OF ACCEPTANCE: EVIDENCE SUBMITTED

1. EVIDENCE SUBMITTED UNDER PREVIOUS NOA's (CONTINUED)

E. MATERIAL CERTIFICATIONS

1. UL Evaluation Report on Surface Burning Characteristics per ANSI/UL723, ASTM E84 of Flint Hills Grades 54 and 40 Expandable Polystyrene Resins, **UL ER7503-01**, issued on May 22, 2013.
2. Notice of Acceptance No. **18-0918.06** issued to **Plaskolite, LLC** for their "TUFFAK Polycarbonate Sheets" dated 11/15/18, expiring on 08/27/22.

F. STATEMENTS

1. Statement letter of conformance, complying with **FBC 7th Edition (2020)** and of no financial interest, dated August 27, 2020, issued by Structural Solutions, P.A., signed and sealed by Thomas L. Shelmerdine, P.E.
(Submitted under NOA No. 20-1015.37)

G. OTHERS

1. Notice of Acceptance No. **19-0205.04**, issued to Amarr Garage Doors dba Entrematic for their Model 1200 Heritage & Oak Summit 3000 EPS Insulated Steel Sectional Garage Door up to 9'-0" Wide and Optional All Impact Resistant Windows (Dp +57.0, -67.5 PSF) approved on 06/13/19 and expiring on 06/13/24.

Ishaq I. Chanda

Ishaq I. Chanda, P.E.
Product Control Unit Supervisor
NOA No. 23-1114.11
Expiration Date: June 13, 2029
Approval Date: January 25, 2024

Amarr Garage Doors dba Entrematic

NOTICE OF ACCEPTANCE: EVIDENCE SUBMITTED

2. NEW EVIDENCE SUBMITTED

A. DRAWINGS

1. Drawing No. **IRC-1209-190-15-F**, titled “Model #1200 Amarr Heritage 3000”, sheets 1 through 3 of 3, dated 03/11/22, prepared by manufacturer, signed and sealed by Thomas L. Shelmerdine, P.E.

B. TESTS

1. Test reports on: 1) Uniform Static Air Pressure Test, Loading per FBC TAS 202-94,
2) Forced Entry Resistance Test per FBC, TAS 202-94
3) Large Missile Impact Test per FBC, TAS 201-94
4) Cyclic Wind Pressure Loading per FBC, TAS 203-94
5) Tensile Test per ASTM E8
along with marked-up drawings and installation diagram of a Model 1200 Heritage 3000, Amarr 9' x 7', 24 ga. steel Sectional Steel Garage Door, prepared by American Test Lab, Inc., Report No. **ATLNC 0228.01-22**, dated 03/30/22, signed and sealed by David W. Johnson, P.E.

C. CALCULATIONS

1. Anchor calculations prepared by Structural Solutions, P.A., dated 04/04/22, signed and sealed by Thomas L. Shelmerdine, P.E.

D. QUALITY ASSURANCE

1. Miami-Dade Department of Regulatory and Economic Resources (RER)

E. MATERIAL CERTIFICATIONS

1. UL Evaluation Report on Surface Burning Characteristics per ANSI/UL723, ASTM E84 of Flint Hills Grades 54 and 40 Expandable Polystyrene Resins, **UL ER7503-01**, issued on May 22, 2013.
2. Notice of Acceptance No. **22-0317.02** issued to **Plaskolite, LLC** for their “**TUFFAK Polycarbonate Sheets**” dated 04/21/22 expiring on 08/27/27.

F. STATEMENTS

1. Statement letter of conformance, complying with **FBC 7th Edition (2020)** and of no financial interest, dated 04/04/20, issued by Structural Solutions, P.A., signed and sealed by Thomas L. Shelmerdine, P.E.

G. OTHERS

1. Notice of Acceptance No. **20-1015.37**, issued to Amarr Garage Doors dba Entrematic for their Model 1200 Heritage & Oak Summit 3000 EPS Insulated Steel Sectional Garage Door up to 9'-0" Wide and Optional All Impact Resistant Windows L.M.I., approved on 01/28/21 and expiring on 06/13/24.

Ishaq I. Chanda

Ishaq I. Chanda, P.E.
Product Control Unit Supervise
NOA No. 23-1114.11
Expiration Date: June 13, 2029
Approval Date: January 25, 2024

Amarr Garage Doors dba Entrematic

NOTICE OF ACCEPTANCE: EVIDENCE SUBMITTED

3. NEW EVIDENCE SUBMITTED

A. DRAWINGS

1. Drawing No. **IRC-1209-190-15-F**, titled “Model #1200 Amarr Heritage 3000”, sheets 1 through 3 of 3, dated 03/11/22, prepared by manufacturer, signed and sealed by Thomas L. Shelmerdine, P.E.

B. TESTS

1. None.

C. CALCULATIONS

1. None.

D. QUALITY ASSURANCE

1. Miami-Dade Department of Regulatory and Economic Resources (RER)

E. MATERIAL CERTIFICATIONS

1. None.

F. STATEMENTS

1. Statement letter of conformance, complying with **FBC 8th Edition (2023)** and of no financial interest, dated 10/27/2023, issued by Structural Solutions, P.A., signed and sealed by Thomas L. Shelmerdine, P.E.

G. OTHERS

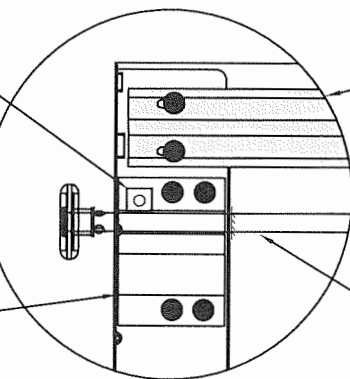
1. This NOA **revises & renews NOA No. 22-0414.09** and updates to FBC 2023 expiring on 06/13/29.

Ishaq I. Chanda

Ishaq I. Chanda, P.E.
Product Control Unit Supervise
NOA No. 23-1114.11
Expiration Date: June 13, 2029
Approval Date: January 25, 2024

14 GA 1.25" X 1.25" X 1 ZINC PLATED PUNCHED ANGLE (MIN 36KSD) ATTACHED TO ADJUSTABLE SLIDE ON TOP FIXTURE WITH (1) 5/16" X 3/4" BOLT AND NUT

12 GA. GALV. COMMERCIAL TOP ROLLER BRACKET ATTACHED W/(4) 1/4" X 1" HEX HEAD SCREWS PER BRACKET

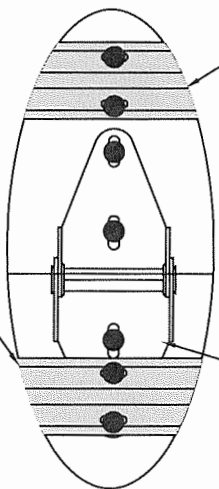


TYPICAL TOP FIXTURES
N.T.S.

3" X 20 GA STRUT ATTACHED W/ (2) 1/4" X 1" HEX HEAD SCREWS PER STILE

3" 20GA. STRUTS ATTACHED W/ (2) 1/4" X 1" HEX HEAD SCREWS AT EACH CENTER STILE

2" 10 BALL STEEL ROLLER 7/16" X 9" STEM W/ BOLT RETAINER USED FOR NON THREADED FASTENERS



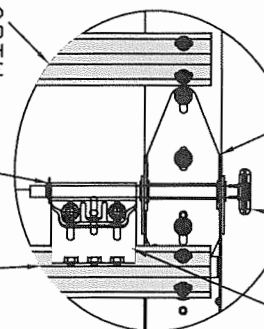
TYPICAL CENTER HINGE
N.T.S.

2" 20GA. STRUTS ATTACHED W/ (2) 1/4" X 1" HEX HEAD SCREWS AT EACH CENTER STILE LOCATION

2" 20GA. STRUT ATTACHED W/ (2) 1/4" X 1" HEX HEAD SCREWS AT EACH END STILE

14GA ADJUSTABLE SLIDE BRACKET ATTACHED W/(2) 1/4-20 X 5/8" CARRIAGE BOLTS AND NUTS

3" 20GA. STRUT ATTACHED W/ (2) 1/4" X 1" HEX HEAD SCREWS AT EACH END STILE



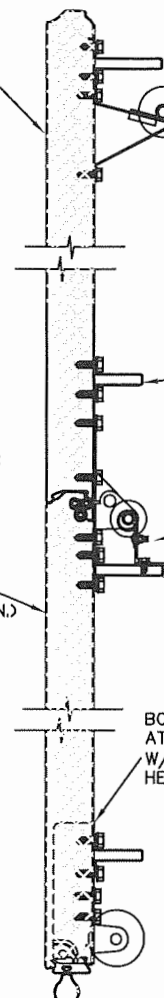
TYPICAL END HINGE
N.T.S.

24 GA. (.0216" MIN) EXTERIOR SKIN G30 GALVANIZED W/ POLYESTER TOP COAT

14 GA. END HINGE ATTACHED W/ (5) 1/4" X 1" HEX HEAD SCREWS

2" 10 BALL STEEL ROLLER 7/16" X 9" STEM W/ BOLT RETAINER USED FOR NON THREADED FASTENERS

11GA. ADJUSTABLE ROLLER CARRIER BRACKET ATTACHED TO STRUT W/ (3) 1/4" X 5/8" HEX HEAD SCREWS



12 GA. GALV. COMMERCIAL TOP ROLLER BRACKET ATTACHED WITH (4) 1/4" X 1" HEX HEAD UNIV. SCREWS PER BRACKET ADJUSTABLE SLIDE BRACKET IS ASSEMBLED WITH (2) 5/16" X 3/4" BOLT & NUT PER BRACKET

(1) 2" X 20 GA (33KSD) STRUT ON BOTTOM OF EVERY SECTION ATTACHED W/(2) 1/4" X 1" HEX HEAD SCREWS AT EACH END STILE AND W/(2) 1/4" X 1" HEX HEAD SCREWS AT EACH CENTER STILE LOCATION

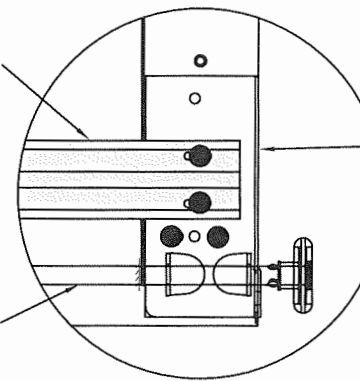
11 GA. ADJUSTABLE ROLLER CARRIER BRACKET

(1) 3" X 20 GA (80KSD) STRUT AT THE TOP OF EVERY SECTION ATTACHED W/(2) 1/4" X 1" HEX HEAD SCREWS AT EACH END STILE AND W/(2) 1/4" X 1" HEX HEAD SCREWS AT EACH CENTER STILE

BOTTOM BRACKET ATTACHED W/ (4) 1/4" X 1" HEX HEAD SCREWS

CFC-FREE EXPANDED POLYSTYRENE INSULATION DENSITY: 0.80 LBS/FT3 (MIN.)

3" X 5-11/16" BOTTOM BRACKET 13 GA. ATTACHED W/(4) 1/4" X 1" HEX HEAD SCREWS



TYPICAL BOTTOM BRACKET
N.T.S.

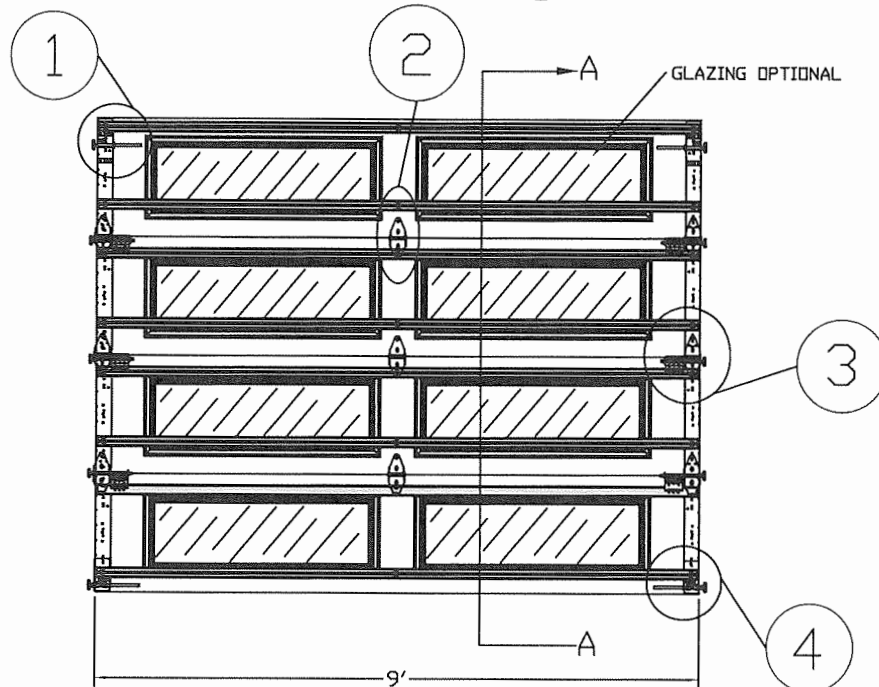
2" 20GA. STRUT ATTACHED W/ (2) 1/4" X 1" HEX HEAD SCREWS AT EACH END STILE

2" 10 BALL STEEL ROLLER 7/16" X 9" STEM W/ BOLT RETAINER USED FOR NON THREADED FASTENERS

PRODUCT REVISED
as complying with the Florida Building Code
NOA-No. 23-1114.11
Expiration Date 06/13/2029
By *Ishag I. Chande*
Miami-Dade Product Control

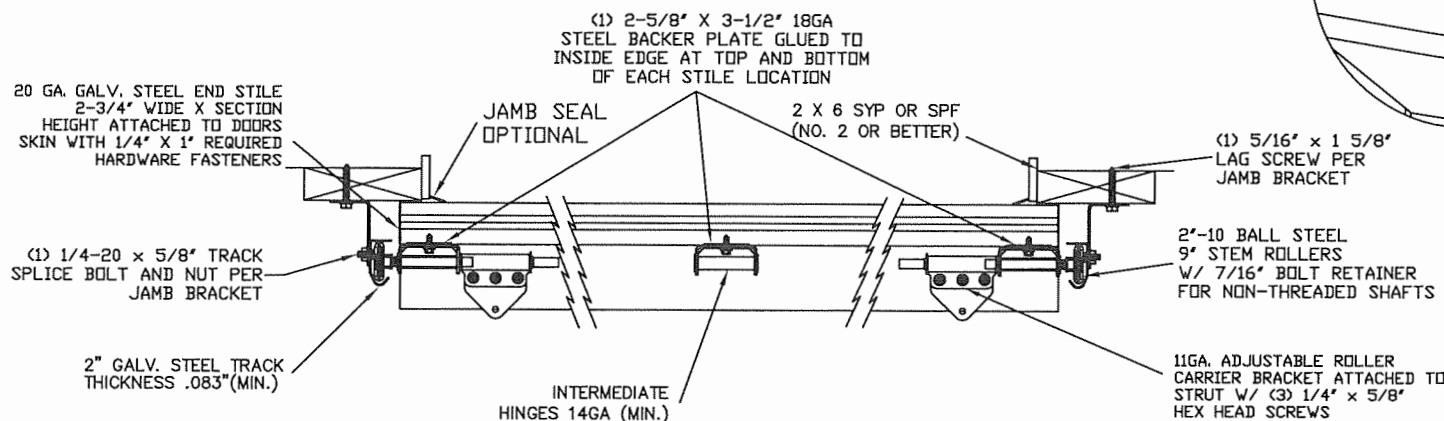
PRODUCT REVISED
as complying with the Florida Building Code
NOA-No. 22-0414.09
Expiration Date: 06/13/2024
By *Manuel Perez*
Miami-Dade Product Control

SECTION A-A (SIDE VIEW)
N.T.S.



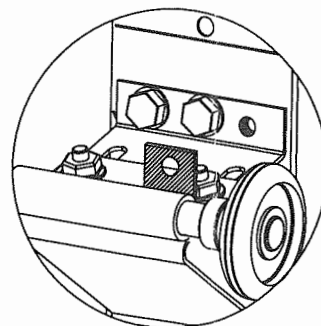
INSIDE ELEVATION
N.T.S.

LARGE MISSILE IMPACT RESISTANT

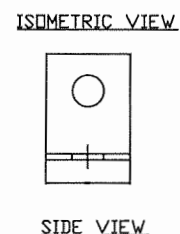
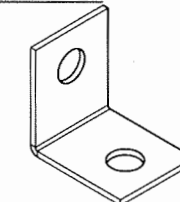
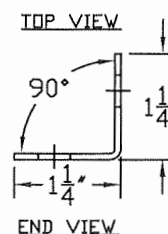


TRACK MOUNTING DETAIL
N.T.S.

TOP FIXTURE REINFORCEMENT ILLUSTRATION

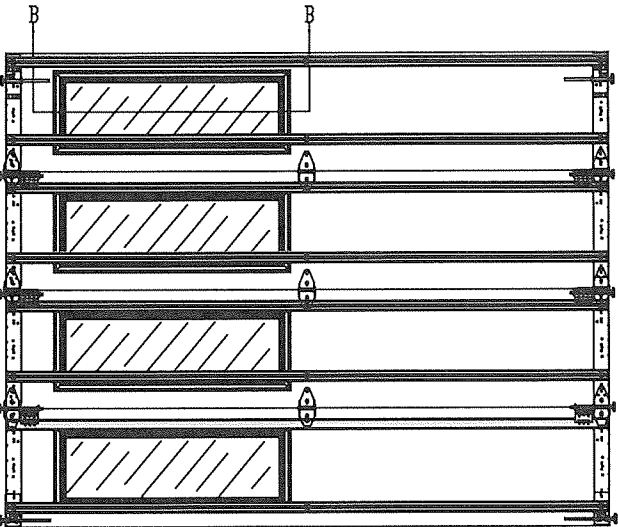


TOP FIXTURE ADDER PIECE

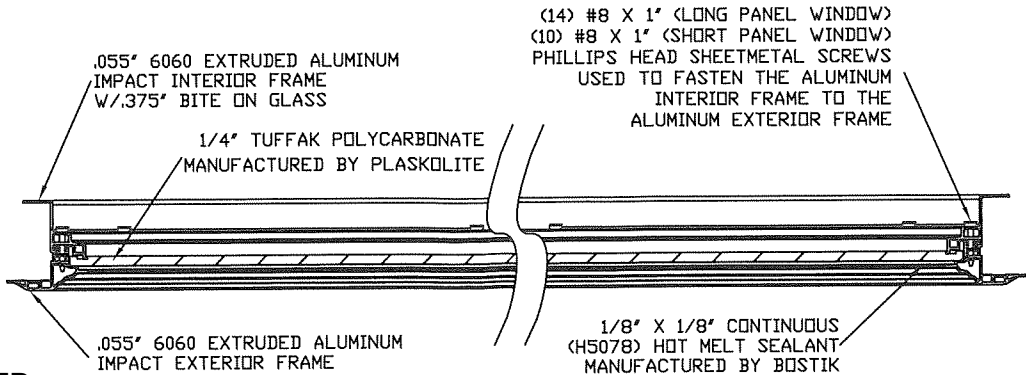


REV	DESCRIPTION OF REVISIONS	DATE	BY
MAX SIZE	9" WIDTH 14" HEIGHT		
DESIGN LOADS	+57.0 PSF -67.5 PSF		
TEST LOADS (1.5 x DESIGN LOADS)	+85.5 PSF -101.3 PSF		
LARGE MISSILE IMPACT RESISTANCE			
<div>Thomas L. Shelmerdine, P.E. (FL PE #0048579) Structural Solutions, PA (FL Firm #29412)</div> <div>THOMAS L. SHELMERDINE LICENSE No. 48579 STATE OF FLORIDA PROFESSIONAL ENGINEER FL</div> <div>Amarr ENTRE/MATIC</div> <div>MODEL #1200 AMARR HERITAGE 3000</div> <div>SIZE B DRAWN BY DRC CHECKED BY RLR DATE 03/11/22 DATE 03/17/22 ENTRE/MATIC 165 CARRIAGE COURT WINSTON-SALEM, N.C. 27105</div> <div>DRAWING NUMBER RC-1209-190-15-F SHEET 1 OF 3</div>			

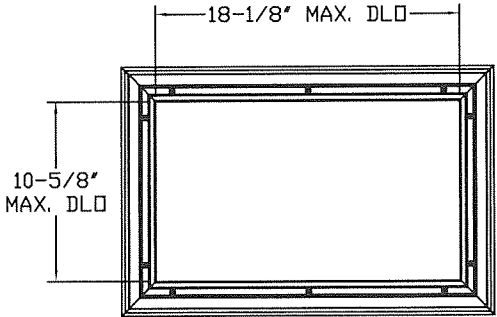
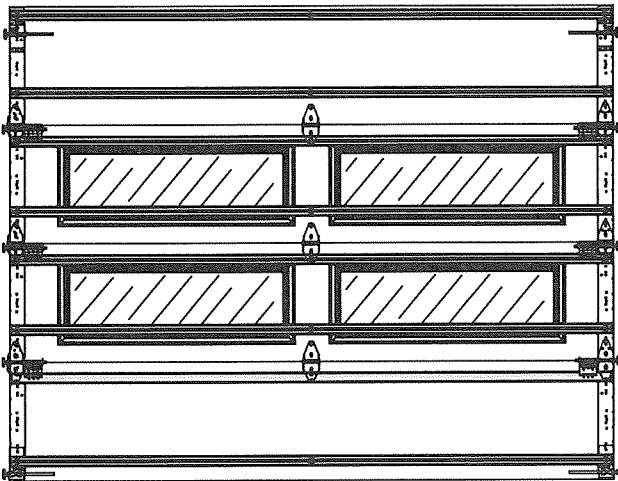
EXAMPLES OF OPTIONAL SHORT AND LONG PANEL GLAZING LAYOUTS
GLAZING AVAILABLE IN ANY COMBINATION



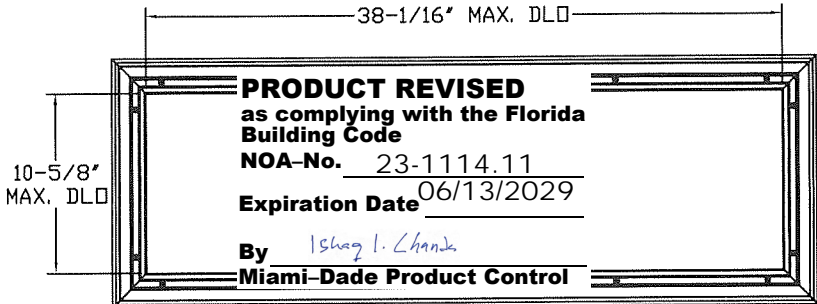
PRODUCT REVISED
as complying with the Florida
Building Code
NOA-No. **22-0414.09**
Expiration Date: **06/13/2024**
By: *Manuel Perez*
Miami-Dade Product Control



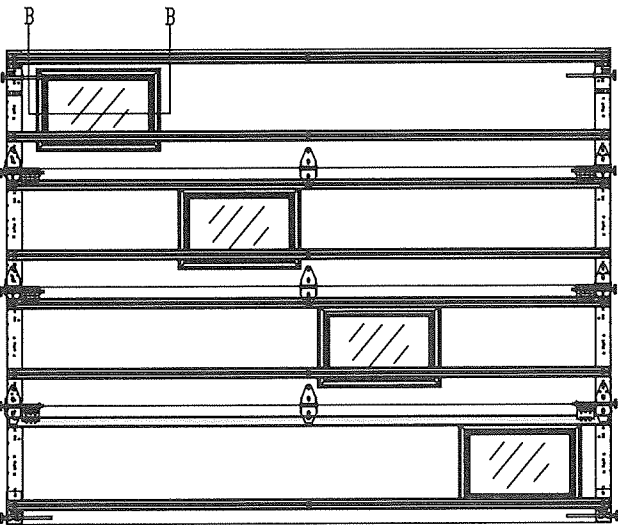
SECTION B-B IMPACT WINDOW DETAIL
N.T.S.



SHORT PANEL IMPACT GLAZING FASTENER DETAIL
N.T.S.



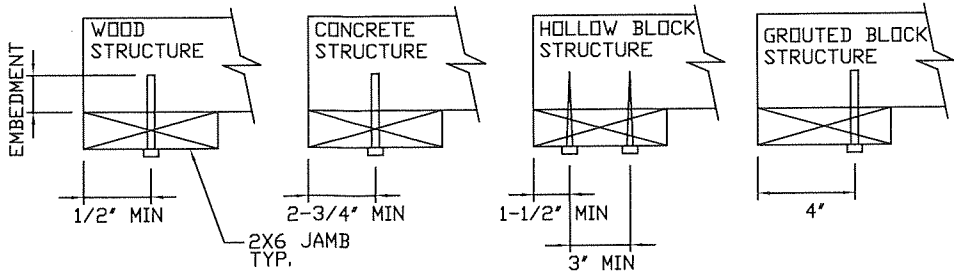
LONG PANEL IMPACT GLAZING FASTENER DETAIL
N.T.S.



WOOD JAMB ATTACHMENT TO STRUCTURE

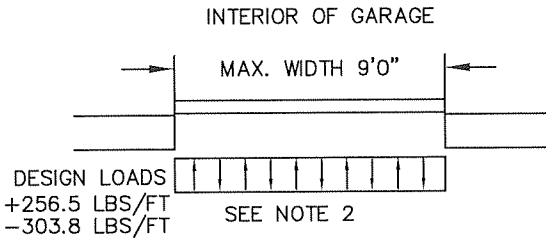
2 X 6 VERTICAL JAMB ATTACHMENT TO WOOD FRAME STRUCTURE
5/16" X 3" LAG SCREWS STARTING 6" FROM ENDS THEN 18" O.C. (1 1/2" EMBEDMENT)
2 X 6 VERTICAL JAMB ATTACHMENT TO 2,000 PSI CONCRETE
HILTI KWIK BOLT 3/8" X 4" STARTING 6" FROM ENDS THEN 24" O.C. (2 1/2" EMBEDMENT)
HILTI SLEEVE ANCHOR 3/8" X 2-3/4" STARTING 6" FROM ENDS THEN 16" O.C. (1 1/4" EMBEDMENT)
ITW/RAMSET REDHEAD (TRU-BOLT) 3/8" X 4" STARTING 6" FROM ENDS THEN 24" O.C. (2 1/2" EMBEDMENT)
2 X 6 VERTICAL JAMB ATTACHMENT TO HOLLOW C-90 BLOCK (1900 PSI MIN)
SIMPSON 1/4" X 3" TITEN SCREWS STARTING 6" FROM ENDS, USE PAIRS OF FASTENERS
(3" APART) AT 8" O.C. (1 1/4" EMBEDMENT)
HILTI 1/4" X 2-3/4" KWIK-CON II+ SCREWS STARTING 6" FROM ENDS, USE PAIRS OF
FASTENERS (3" APART) AT 8" O.C. (1 1/4" EMBEDMENT)
2 X 6 VERTICAL JAMB ATTACHMENT TO GROUTED C-90 BLOCK (2000 PSI GROUT)
HILTI SLEEVE ANCHOR 3/8" X 2-3/4" STARTING 6" FROM ENDS THEN 20" O.C. (1 1/4"
EMBEDMENT) (OR, USE FASTENERS FOR HOLLOW C-90 BLOCK)

*LAGS AND BOLTS CAN BE COUNTERSUNK TO PROVIDE A FLUSH MOUNTING SURFACE.
*PREPARATION OF WOOD JAMBS BY OTHERS

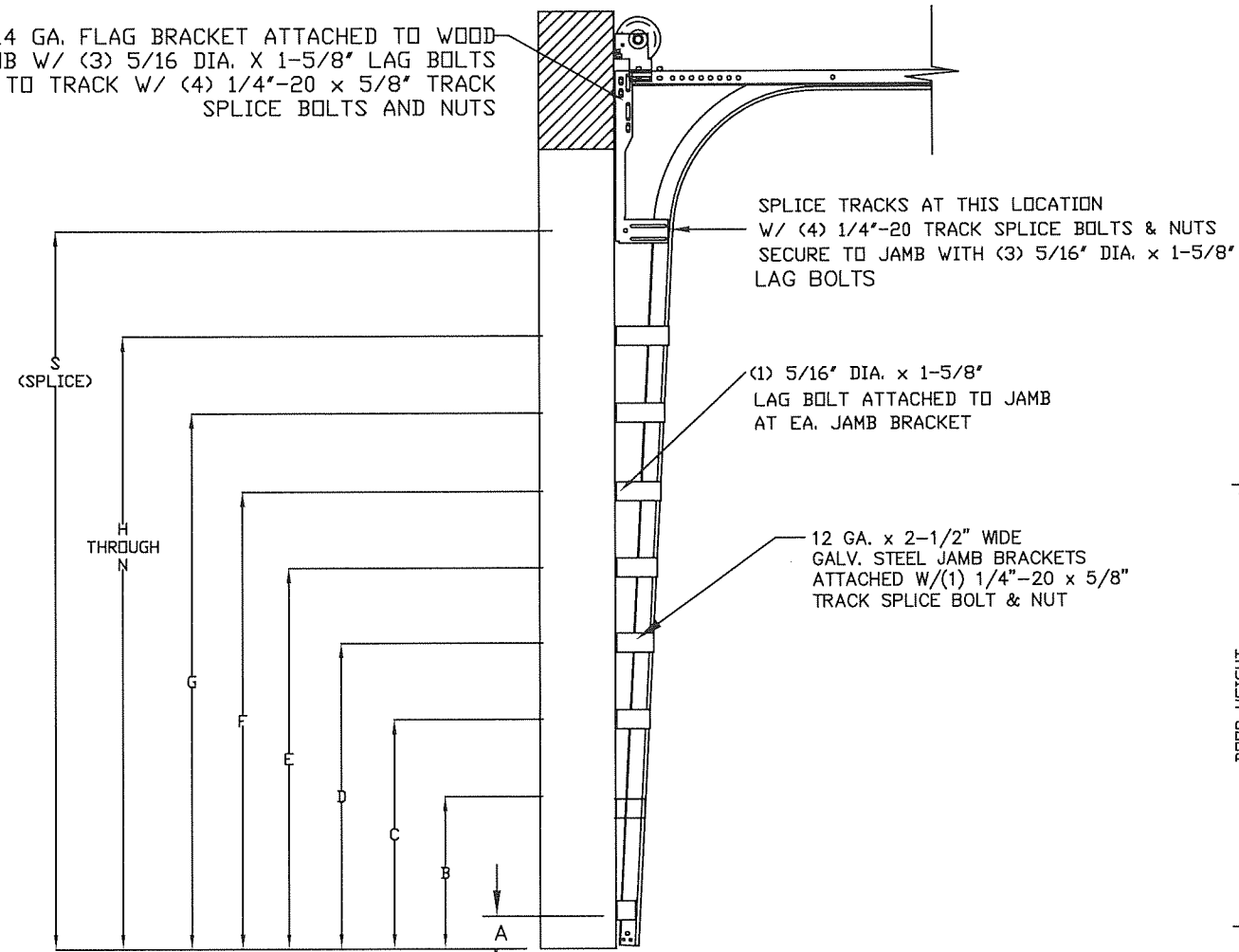


SPECIFICATIONS AND NOTES

1. ALL THE LOAD FROM THE DOOR IS TRANSFERRED TO THE VERTICAL TRACK, FROM THE TRACK THE LOAD IS TRANSFERRED TO THE VERTICAL JAMBS. THE HORIZONTAL JAMB OR HEADER RECEIVES NO PORTION OF THE LOAD TRANSFERRED FROM THE DOOR.
2. EACH VERTICAL JAMBS RECEIVES MAXIMUM DESIGN LOADS OF: +256.5 LBS/FT & -303.8 LBS/FT
3. DOOR AND HARDWARE WILL BE DESIGNED, MANUFACTURED AND INSTALLED WITH STANDARDS AS SET FORTH BY DASMA.
4. DOOR SECTIONS SHALL BE 24 GA. (.0216) MIN. EXTERIOR SKIN ROLLED FORMED, W/ BAKED ON POLYESTER FINISH
5. DOORS OVER (4) SECTIONS REFER TO TABLES ON PAGE 3
6. SUPPORTING STRUCTURAL ELEMENTS SHALL BE DESIGNED BY A REGISTERED PROFESSIONAL ENGINEER FOR WIND LOADS
7. THIS APPROVAL REQUIRES THE MANUFACTURER TO DO TESTING OF ALL COILS USED TO FABRICATE DOOR PANELS UNDER THIS NOTICE OF ACCEPTANCE. A MINIMUM OF 2 SPECIMENS SHALL BE CUT FROM EACH COIL AND TENSILE TESTED ACCORDING TO ASTM E-8 BY A DADE COUNTY APPROVED LAB SELECTED AND PAID BY THE MANUFACTURER. EVERY 3 MONTHS, 4 TIMES A YEAR, THE MANUFACTURER SHALL MAIL TO THIS OFFICE: A COPY OF THE TEST REPORTS WITH CONFIRMATION THAT THE SPECIMENS WERE SELECTED FROM COILS AT THE MANUFACTURER PRODUCTION FACILITIES. AND A NOTARIZED STATEMENT FROM THE MANUFACTURER THAT ONLY COILS WITH YIELD STRENGTH OF 44,000 PSI OR MORE SHALL BE USED TO MAKE DOOR PANELS FOR DADE COUNTY UNDER THIS NOTICE OF ACCEPTANCE.



REV	DESCRIPTION OF REVISIONS	DATE	BY
	MAX SIZE 9' WIDTH 14' HEIGHT DESIGN LOADS +57.0 PSF -67.5 PSF TEST LOADS (1.5 x DESIGN LOADS) +85.5 PSF -101.3 PSF LARGE MISSILE IMPACT RESISTANCE		
	<div>Thomas L. Shelmerdine, PE (FL PE #0048579) Structural Solutions, PA (FL Firm #29412)</div> <div>THOMAS L. SHELMERDINE LICENSE No. 48579 STATE OF FLORIDA PROFESSIONAL ENGINEER FL</div> <div>Amarr ENTRE/MATIC</div>		
	MODEL #1200 AMARR HERITAGE 3000		
SIZE B	DRAWN BY DRC CHECKED BY RLR	DATE 03/11/22 DATE 03/17/22	DRAWING NUMBER IRC-1209-190-15-F
ENTRE/MATIC 165 CARRIAGE COURT WINSTON-SALEM, N.C. 27105			SHEET 2 OF 3

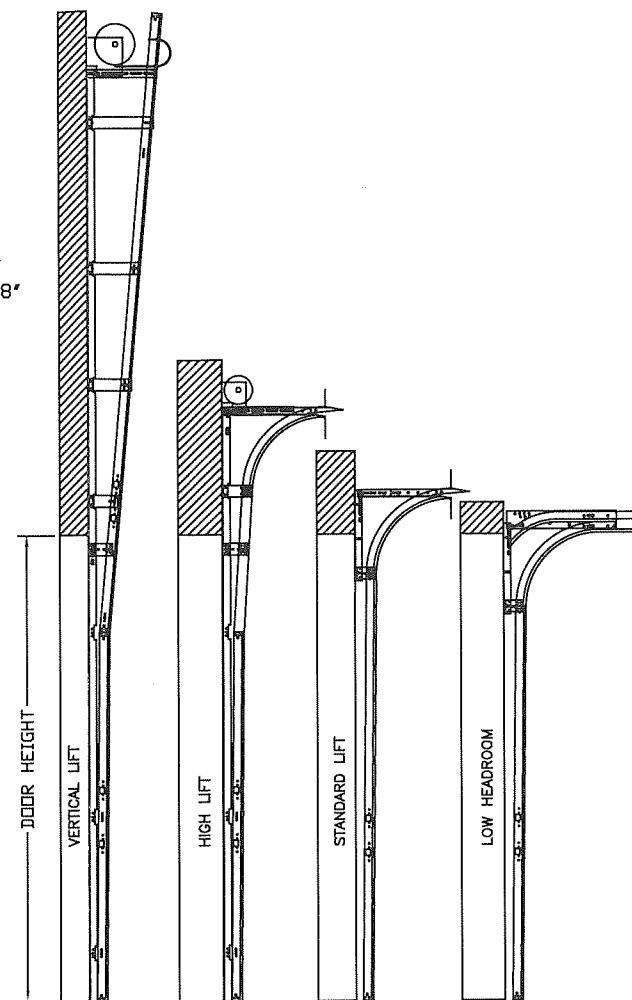


✓(1) 5/16" DIA. x 1-5/8"
LAG BOLT ATTACHED TO JAMB
AT EA. JAMB BRACKET

- 12 GA. x 2-1/2" WIDE
GALV. STEEL JAMB BRACKETS
ATTACHED W/(1) 1/4"-20 x 5/8"
TRACK SPLICE BOLT & NUT

SEE (TABLE 1) FOR
JAMB BRACKET SPACING

TRACK CONFIGURATION FOR 6'6" UP TO 14' TALL DOORS
N.T.S.



AVAILABLE TRACK CONFIGURATIONS
N.T.S.

Expiration Date 06/13/2029

By Ishaq I. Chande
Miami-Dade Product Control

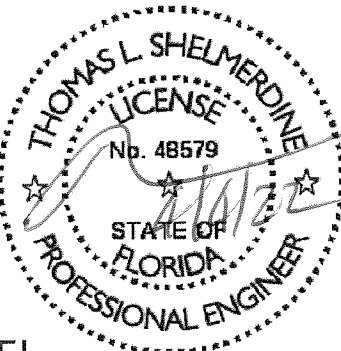

Expiration Date: 06/13/2024

By: Manuel Perez
Miami-Dade Product Control

DOOR HEIGHT	TRACK ATTACHMENT														SPLICE
	A	B	C	D	E	F	G	H	I	J	K	L	M	N	S
6' 6"	3"	14"	27"	38"	46"	56"	64"								70"
7'	3"	14"	27"	38"	46"	56"	68"								76"
7' 6"	3"	14"	27"	38"	46"	56"	68"	78"							82"
8'	3"	14"	27"	38"	46"	56"	68"	78"							88"
8' 6"	3"	14"	27"	38"	46"	56"	68"	78"	88"						94"
9'	3"	14"	27"	38"	46"	56"	68"	78"	88"						100"
9' 6"	3"	14"	27"	38"	46"	56"	68"	78"	88"	98"					106"
10'	3"	14"	27"	38"	46"	56"	68"	78"	88"	100"					112"
10' 6"	3"	14"	27"	38"	46"	56"	68"	78"	88"	100"	110"				118"
11'	3"	14"	27"	38"	46"	56"	68"	78"	88"	100"	110"				124"
11' 6"	3"	14"	27"	38"	46"	56"	68"	78"	88"	100"	110"	120"			130"
12'	3"	14"	27"	38"	46"	56"	68"	78"	88"	100"	110"	122"			136"
12' 6"	3"	14"	27"	38"	46"	56"	68"	78"	88"	100"	109"	122"	132"		142"
13'	3"	14"	27"	38"	46"	56"	68"	78"	88"	100"	114"	122"	134"		148"
13' 6"	3"	14"	27"	38"	46"	56"	68"	78"	88"	100"	109"	122"	134"	144"	154"
14'	3"	14"	27"	38"	46"	56"	68"	78"	88"	100"	114"	122"	134"	146"	160"

DOOR HEIGHT	SECTION HEIGHTS							
	Btm	#2	#3	#4	#5	#6	#7	#8
14' 0"	21"	21"	21"	21"	21"	21"	21"	21"
13' 6"	21"	21"	21"	21"	21"	18"	18"	21"
13' 0"	21"	21"	21"	18"	18"	18"	18"	21"
12' 6"	21"	18"	18"	18"	18"	18"	18"	21"
12' 0"	21"	21"	21"	21"	21"	18"	21"	
11' 6"	21"	21"	21"	18"	18"	18"	21"	
11' 0"	21"	18"	18"	18"	18"	18"	21"	
10' 6"	21"	21"	21"	21"	21"	21"		
10' 0"	21"	21"	21"	18"	18"	21"		
9' 6"	21"	18"	18"	18"	18"	21"		
9' 0"	18"	18"	18"	18"	18"	18"		
8' 6"	21"	21"	21"	18"	21"			
8' 0"	21"	18"	18"	18"	21"			
7' 6"	18"	18"	18"	18"	18"			
7' 0"	21"	21"	21"	21"				
6' 6"	21"	18"	18"	21"				

SECTION	STRUT SIZE
8TH	3"
	2"
7TH	3"
	2"
6TH	3"
	2"
5TH	3"
	2"
4TH	3"
	2"
3RD	3"
	2"
2ND	3"
	2"
BOTTOM	3"
	2"

REV	DESCRIPTION OF REVISIONS		DATE	BY
MAX SIZE 9' WIDTH 14' HEIGHT DESIGN LOADS +57.0 PSF -67.5 PSF TEST LOADS (1.5 x DESIGN LOADS) +85.5 PSF -101.3 PSF LARGE MISSILE IMPACT RESISTANCE		Thomas L. Shelmerdine, PE (FL PE #0048579) Structural Solutions, PA (FL Firm #29412)  FL		
				
MODEL #1200 AMARR HERITAGE 3000				
SIZE	DRAWN BY	DRC	DATE	DRAWING NUMBER
B	CHECKED BY	RLR	DATE	RC-1209-190-15-F
ENTREMATIC 165 CARRIAGE COURT WINSTON-SALEM, N.C. 27105				SHEET 3 OF 3