



DEPARTMENT OF REGULATORY AND ECONOMIC RESOURCES (RER)
BOARD AND CODE ADMINISTRATION DIVISION

NOTICE OF ACCEPTANCE (NOA)

MIAMI-DADE COUNTY
PRODUCT CONTROL SECTION

11805 SW 26 Street, Room 208
Miami, Florida 33175-2474
T (786) 315-2590 F (786) 315-2599

www.miamidade.gov/economy

Wayne Dalton a Div. of Overhead Door Corporation
3395 Addison Drive
Pensacola, FL 32514

SCOPE:

This NOA is being issued under the applicable rules and regulations governing the use of construction materials. The documentation submitted has been reviewed and accepted by Miami-Dade County RER-Product Control Section to be used in Miami Dade County and other areas where allowed by the Authority Having Jurisdiction (AHJ).

This NOA shall not be valid after the expiration date stated below. The Miami-Dade County Product Control Section (In Miami-Dade County) and/ or the AHJ (in areas other than Miami-Dade County) reserve the right to have this product or material tested for quality assurance purposes. If this product or material fails to perform in the accepted manner, the manufacturer will incur the expense of such testing and the AHJ may immediately revoke, modify, or suspend the use of such product or material within their jurisdiction. RER reserves the right to revoke this acceptance if it is determined by Miami-Dade County Product Control Section that this product or material fails to meet the requirements of the applicable building code.

This product is approved as described herein and has been designed to comply with the Florida Building Code, including the High Velocity Hurricane Zone.

DESCRIPTION: Series 8000 Steel Sectional Garage Door up to 16'-2" Wide w/ Optional EPS Insulation and Impact Resistant Glazing

APPROVAL DOCUMENT: Drawing No. **D-365115**, titled "8024/8124/8224 16'2" max. width", sheets 1 through 4 of 4, dated 02/18/2020, prepared by Wayne Dalton, signed and sealed by Dwayne J. Kornish, P.E. 09/29/2020, bearing the Miami-Dade County Product Control revision stamp with the Notice of Acceptance number and expiration date by the Miami-Dade County Product Control Section.

MISSILE IMPACT RATING: Large and Small Missile Impact Resistant

LABELING: A permanent label with the manufacturer's name or logo, manufacturing addresses in Mount Hope, OH, model number, the positive and negative design pressure rating, indicate impact rated if applicable, installation instruction drawing reference number, approval number (NOA), the applicable test standards, and the statement reading 'Miami-Dade County Product Control Approved' is to be located on the door's side track, bottom angle, or inner surface of a panel.

LIMITATION: This door has not been tested for air infiltration.

RENEWAL of this NOA shall be considered after a renewal application has been filed and there has been no change in the applicable building code negatively affecting the performance of this product.

TERMINATION of this NOA will occur after the expiration date or if there has been a revision or change in the materials, use, and/or manufacture of the product or process. Misuse of this NOA as an endorsement of any product, for sales, advertising or any other purposes shall automatically terminate this NOA. Failure to comply with any section of this NOA shall be cause for termination and removal of NOA.

ADVERTISEMENT: The NOA number preceded by the words Miami-Dade County, Florida, and followed by the expiration date may be displayed in advertising literature. If any portion of the NOA is displayed, then it shall be done in its entirety.

INSPECTION: A copy of this entire NOA shall be provided to the user by the manufacturer or its distributors and shall be available for inspection at the job site at the request of the Building Official.

This NOA revises **NOA #20-0416.05** and consists of this page 1 and evidence pages E-1 & E-2, as well as approval document mentioned above.

The submitted documentation was reviewed by **Helmy A. Makar, P.E., M.S.**



Helmy A. Makar
02/08/24

NOA No. 23-1120.08
Expiration Date: 12/17/2025
Approval Date: 02/08/2024

Wayne Dalton a Div. of Overhead Door Corporation

NOTICE OF ACCEPTANCE: EVIDENCE SUBMITTED

1. EVIDENCE SUBMITTED UNDER PREVIOUS APPROVAL NOA #20-0416.05

A. DRAWINGS

1. Drawing No. **D-365115**, titled "8024/8124/8224 16'2" max. width", sheets 1 through 4 of 4, dated 02/18/2020, prepared by Wayne Dalton, signed and sealed by Dwayne J. Kornish, P.E. 09/29/2020.

B. TESTS

1. Test reports on 1) Uniform Static Air Pressure Test, Loading per FBC TAS 202-94
2) Large Missile Impact Test per FBC, TAS 201-94
3) Cyclic Wind Pressure Loading per FBC, TAS 203-94
4) Forced Entry Test, per FBC, TAS 202-94
5) Tensile Test per ASTM E8
along with marked-up drawings and installation diagram of Sectional Garage Doors 8000, prepared by Intertek, Test Report No. **K3485.02-801-18 R3**, dated 02/26/2020, revised on 09/04/2020, signed and sealed by Tyler Westerling, P.E.

C. CALCULATIONS

1. Anchor load calculations prepared by Wayne Dalton, dated 02/07/2020, signed and sealed by Dwayne J. Kornish, P.E.

D. QUALITY ASSURANCE

1. Miami-Dade Department of Regulatory and Economic Resources (RER)

E. MATERIAL CERTIFICATIONS

1. UL evaluation report on flame spread and smoke developed of STYROPEK EPS resins per ASTM E84, ANSI/UL723, prepared by UL, LLC, Evaluation Report # **UL ER38219-01**, dated 04/08/2015.
2. Test report on ignition temperature of Drew Foam Company EPS per ASTM D1929-16, prepared by Element Materials Technology, Test Report # **19-06-P0083**, dated 06/24/2019, signed by Rubaiyat Khondker.
3. Notice of Acceptance No. **18-0918.06** issued to Plaskolite, LLC for its TUFFAK Polycarbonate Sheets, approved on 11/15/2018 and expiring on 08/27/2022.

F. STATEMENTS

1. Statement letter of code conformance to the 6th edition (2017) and 7th edition (2020) FBC issued by Wayne Dalton, dated 06/10/2020, signed and sealed by Dwayne J. Kornish, P.E.
2. Statement letter of no financial interest issued by Wayne Dalton, dated 09/29/2020, signed and sealed by Dwayne J. Kornish, P.E.



Helmy A. Makar, P.E., M.S.
Product Control Section Supervisor
NOA No. 23-1120.08
Expiration Date: 12/17/2025
Approval Date: 02/08/2024

Wayne Dalton a Div. of Overhead Door Corporation

NOTICE OF ACCEPTANCE: EVIDENCE SUBMITTED

2. NEW EVIDENCE SUBMITTED

A. DRAWINGS

1. None.

B. TESTS

1. None.

C. CALCULATIONS

1. None.

D. QUALITY ASSURANCE


1. Miami-Dade Department of Regulatory and Economic Resources (RER)

E. MATERIAL CERTIFICATIONS

1. None.

F. STATEMENTS

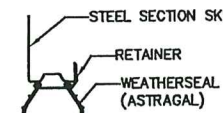
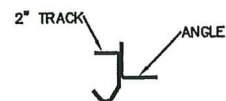
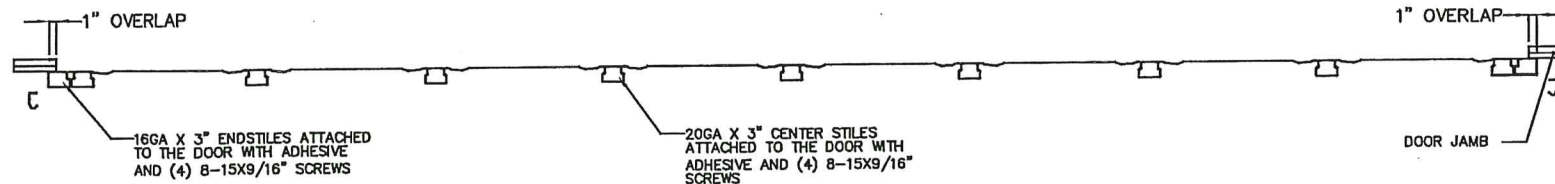
1. Statement letter of code conformance to the 8th edition (2023) FBC issued by Wayne Dalton, dated 01/25/2024, signed and sealed by Dwayne J. Kornish, P.E., on 01/29/24.



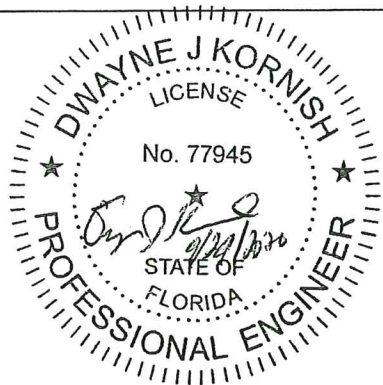
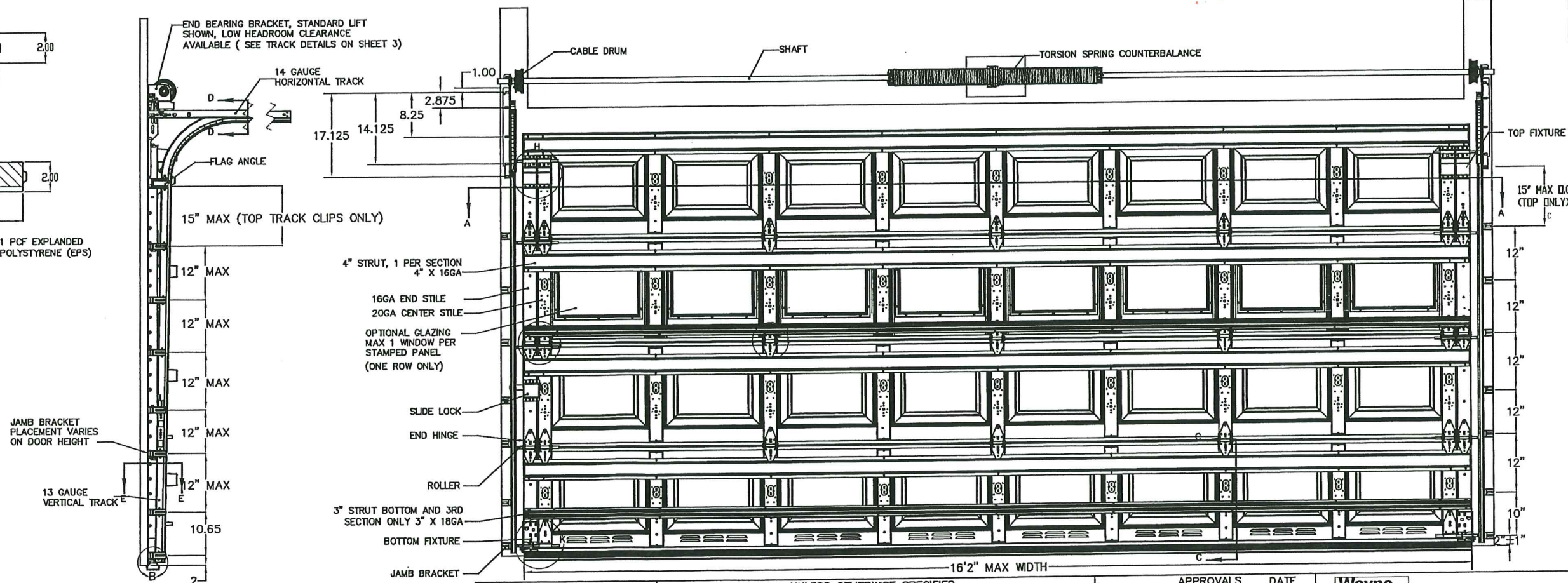
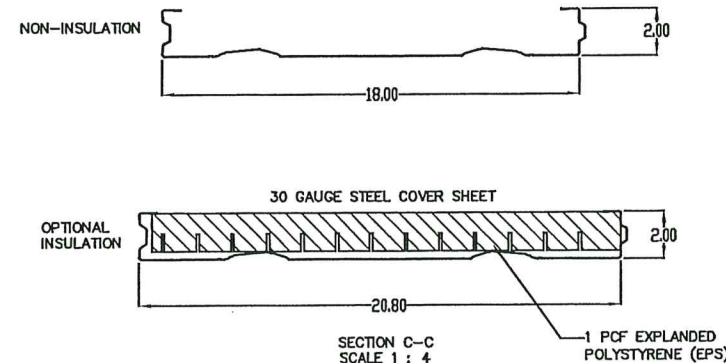
Helmy A. Makar, P.E., M.S.
Product Control Section Supervisor
NOA No. 23-1120.08
Expiration Date: 12/17/2025
Approval Date: 02/08/2024

NOTES: (UNLESS OTHERWISE SPECIFIED)

1. RATED DESIGN LOAD +46/-52 PSF.
2. SECTION HEIGHTS MAY VARY TO CREATE VARIOUS DOOR HEIGHTS, 20.8" MAXIMUM SECTION HEIGHT.
3. MINIMUM 1" OVERLAP ON BOTH JAMBS REQUIRED TO MEET NEGATIVE DESIGN PRESSURES.
4. TESTED IN ACCORDANCE WITH DADE COUNTY PROTOCOLS TAS 201-94, TAS 202-94, & TAS 203-94.
5. DOOR SKIN MUST BE 25,000 PSI MIN. YIELD STRENGTH.
6. JAMB LOAD CALCULATIONS:
 $(1/2 \text{ DOOR WIDTH})(1 \text{ FT OF HEIGHT})(\text{DESIGN PRESSURE})$
 $(8.067)(1 \text{ FOOT})(46.00 \text{ AND } -52.00)(371.1/-419.5) \text{ LB.}$
7. JAMB FASTENER REQUIREMENTS:
 $F_s = (1/2 \text{ DOOR WIDTH})(1 \text{ FT OF HEIGHT})(\text{DESIGN PRESSURE})$
 $F_s = 371 \text{ LBS.}$
8. DOOR SKIN MATERIAL SHALL BE GALVANIZED ACCORDING TO ASTM A-525 TO G90 MIN, WITH BAKED-ON PRIMER, AND BAKED-ON POLYESTER PAINT TOP COAT.
9. FOR ANCHORING INTO WOOD, USE ONE 5/16" LAG SCREW PER JAMB BRACKET WITH 1-1/2" EMBEDMENT INTO SOUTHERN PINE (G=0.55) OR BETTER.
10. APPROVED INSULATED AND NON-INSULATED: 8024 (24GA), 8124 (24GA), 8224 (24GA), 0.0209" MIN STEEL.
11. WELD SLOT ON ANGLE AND 3/32" X 1" LONG ON 12" CENTERS. "IF WELDING MOUNTING OPTION IS CHOSEN."
12. LIFT UP MECHANISM-MANUAL, CHAIN LIFT, OR OPERATOR IS NOT PART OF THIS APPROVAL.
13. STANDARD LIFT, HIGH LIFT, VERTICAL LIFT, AND LOW HEADROOM TRACK IS AVAILABLE. FOR LOW HEADROOM LIFT CONDITIONS TOP BRACKET SHALL BE 13 GA LHR 7/4 TOP BRACKET WITH A MIN OF (3) 1/4 - 14 X 7/8" SELF DRILLING CRIMPITTE SCREWS IN LIEU OF THE BRACKET SHOWN ON DRAWING. U-BAR ON TOP SECTION SHALL BE INSTALLED ON TOP OF LHR TOP BRACKETS.
14. ATTACH STRUTS WITH (2) 1/4-14x7/8" SELF DRILLING CRIMPITTE SCREWS AT ALL STILE LOCATIONS, TYP. LOCATED WITHIN 6" , +/- 3" FROM TOP OF SECTION.
15. KEY LOCK, SLIDE LOCK, OR DRAWBAR OPERATOR REQUIRED.
16. IMPACT RESISTANT GLAZING OPTION- IMPACT RESISTANT GLAZING SYSTEM MAY BE INSTALLED INTERMEDIATE SECTION OR TOP SECTION. GLAZING SHALL BE 1/4" POLYCARBONATE. 13-3/4" X 20-1/8" MAXIMUM SIZE, FASTENED WITH # 8 X 1" SMS: 3X MIN ALONG THE HORIZONTAL AND 2X MIN ALONG THE VERTICAL SEE DETAIL F-F ON SHEET 2 FOR ASSEMBLY DETAILS.
17. THE DESIGN OF THE SUPPORTING STRUCTURAL ELEMENTS SHALL BE THE RESPONSIBILITY OF THE PROFESSIONAL OF RECORD FOR THE BUILDING OR STRUCTURE AND IN ACCORDANCE WITH CURRENT BUILDING CODES FOR THE LOADS LISTED ON THIS DRAWING.
18. VENTS PROVIDE 60 SQUARE INCHES PER VEHICLE.



PRODUCT REVISED
as complying with the Florida
Building Code
Acceptance No. 23-1120-08
Expiration Date 12/17/2025
By *Heidi A. Miller*
Miami Dade Product Control

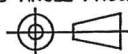


DWAYNE J. KORNISH, PE
4576 COUNTY ROAD 160
MOUNT HOPE, OHIO
FL PE 77945
TX PE 117868

PROFESSIONAL ENGINEER'S SEAL PROVIDED ONLY FOR
VERIFICATION OF WINDLOAD CONSTRUCTION DETAILS.

PRODUCT APPROVED
as complying with the Florida
Building Code
NOA-No. **20-0416.05**
Approval Date **12/17/2020**
By *[Signature]*
Miami-Dade Product Control

THIRD ANGLE PROJECTION



A DIVISION OF OVERHEAD
DOOR CORP
3395 ADDISON DRIVE
PENSACOLA, FLORIDA 32514
(850)-474-9890

UNLESS OTHERWISE SPECIFIED
INTERPRET DIMS & TOLS
PER ASME Y14.5M
ALL DIMS ARE IN
INCHES
DO NOT SCALE
DIMS CIRCLED WITH SYMBOL 'C'
ARE CRITICAL TO QUALITY DESIGN
FEATURES & MUST MEET APPLICABLE
IN-PROCESS INSPECTION STANDARDS.

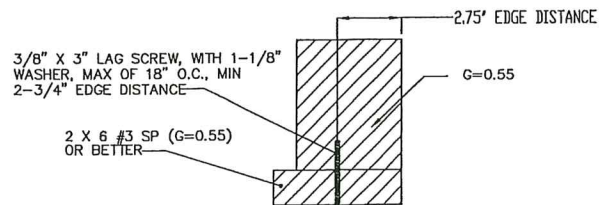
TOLERANCES:
.X = ±.1
.XX = ±.03
.XXX = ±.010
ANGULAR = ±.5 °
HOLES:
< Ø.251 = +.004/-0.003
Ø.251-Ø.500 = +.006/-0.003
> Ø.500 = +.008/-0.003

| APPROVALS | | DATE |
|-----------|------------|---------|
| DRAWN | G. CLARK | 4-11-19 |
| CHECKED | D. KORNISH | 2-18-20 |
| APPROVED | - | - |
| MATERIAL | - | - |
| FINISH | - | - |

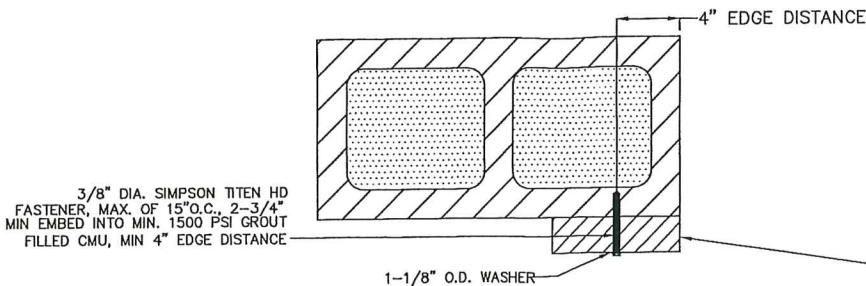
WINDLOAD SPECIFICATION
OPTION CODE 1127

| Wayne Dalton | | PENSACOLA, FLORIDA | |
|---|----------|--------------------|--|
| DESCRIPTION 8024/8124/8224 16'2" MAX WIDTH | | | |
| SIZE | DWG NO. | REV | |
| D | D-365115 | P-04 | |
| SCALE 1:12 | UOM = EA | SHEET 1 OF 4 | |

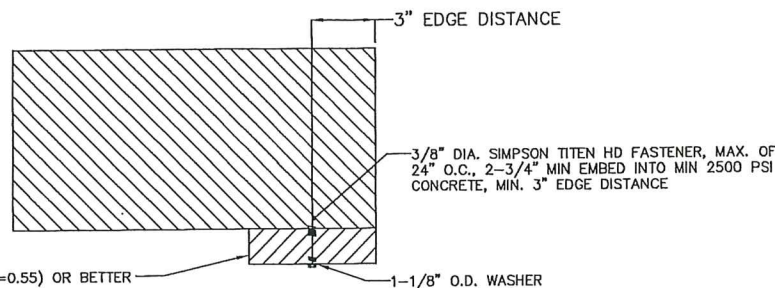
NOTES: (UNLESS OTHERWISE SPECIFIED)



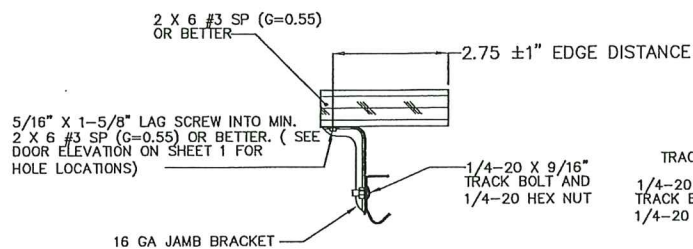
WOOD MOUNTED TO #3 SOUTHERN PINE SUBSTRATE



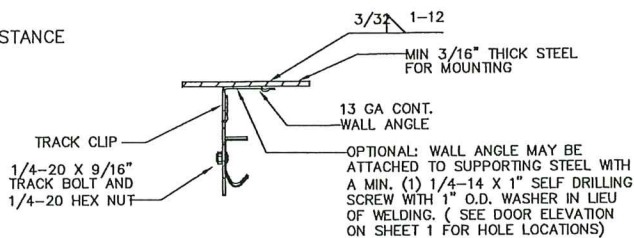
WOOD MOUNTED TO GROUT FILLED MASONRY BLOCK DETAIL



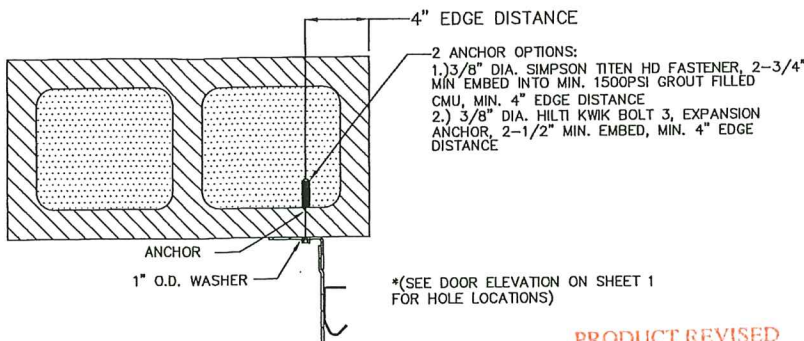
WOOD MOUNTED TO 2500PSI CONCRETE DETAIL



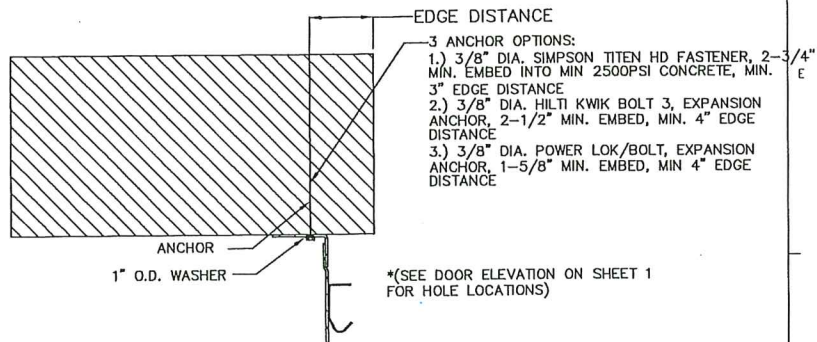
MOUNTING TO WOOD JAMB DETAIL



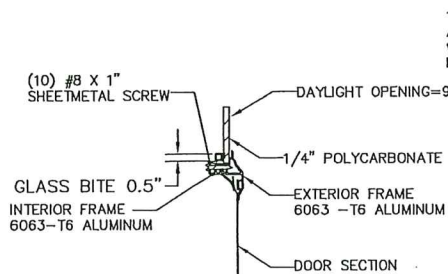
MOUNTING TO STEEL JAMB DETAIL



MOUNTING TO GROUT FILLED MASONRY BLOCK DETAIL

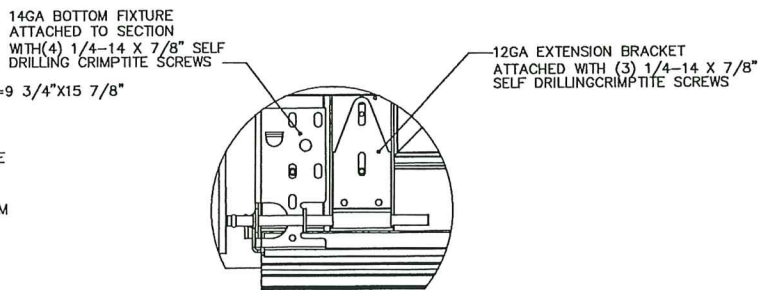


MOUNTING TO 2500PSI CONCRETE DETAIL

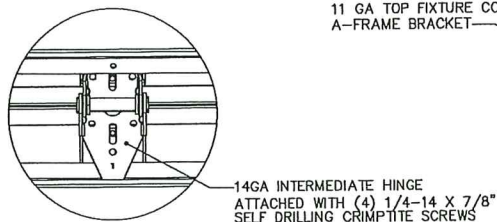


WINDOW DETAIL

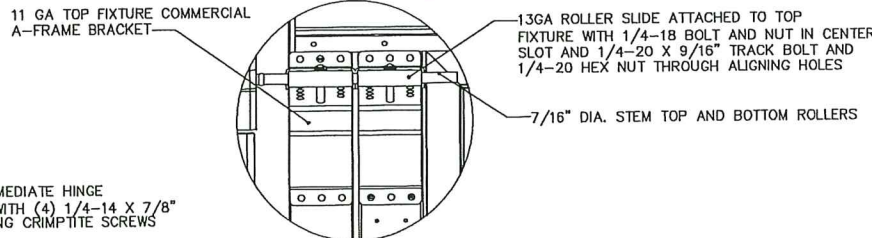
SECTION F - F
SCALE 1 : 4



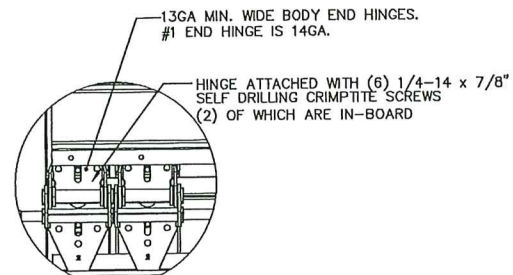
DETAIL K
SCALE 1 : 4



DETAIL J
SCALE 1 : 4



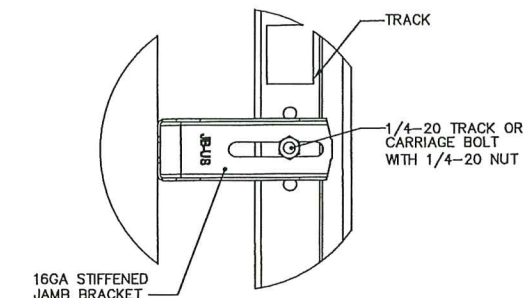
DETAIL H
SCALE 1 : 4



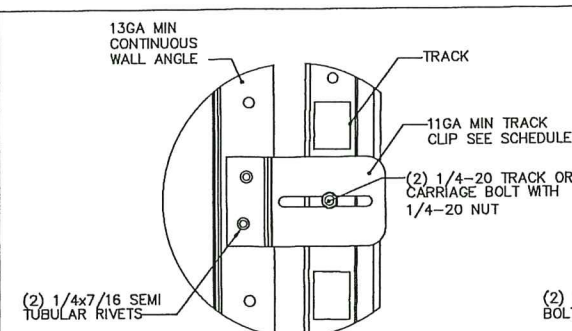
DETAIL K
SCALE 1 : 4

PRODUCT REVISED
as complying with the Florida
Building Code
Acceptance No. 23-1120.08
Expiration Date 12/17/2025
By *Heidi A. Malar*
Miami Dade Product Control

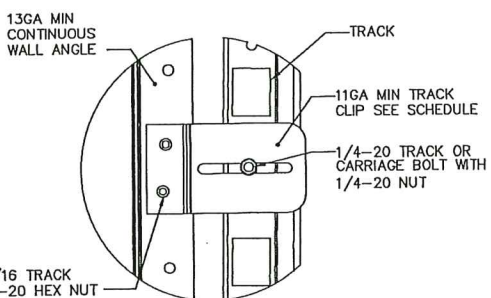
OPTIONAL WALL ANGLE TRACK



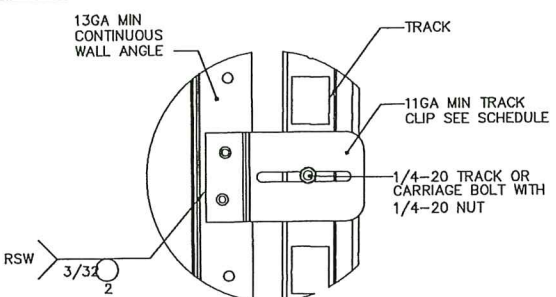
TYPICAL TRACK AND JAMB FASTENERS DETAIL



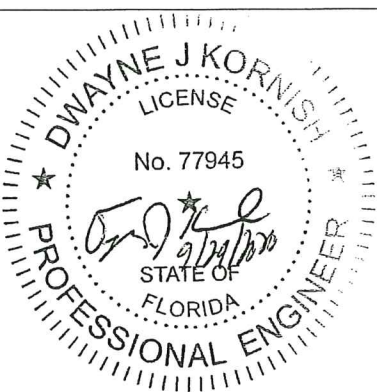
TYPICAL TRACK CLIP RIVETING DETAIL



TYPICAL TRACK CLIP BOLTING DETAIL



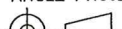
TYPICAL TRACK CLIP WELDING DETAIL



DWAYNE J. KORNISH, PE
4576 COUNTY ROAD 160
MOUNT HOPE, OHIO
FL PE 77945
TX PE 117868

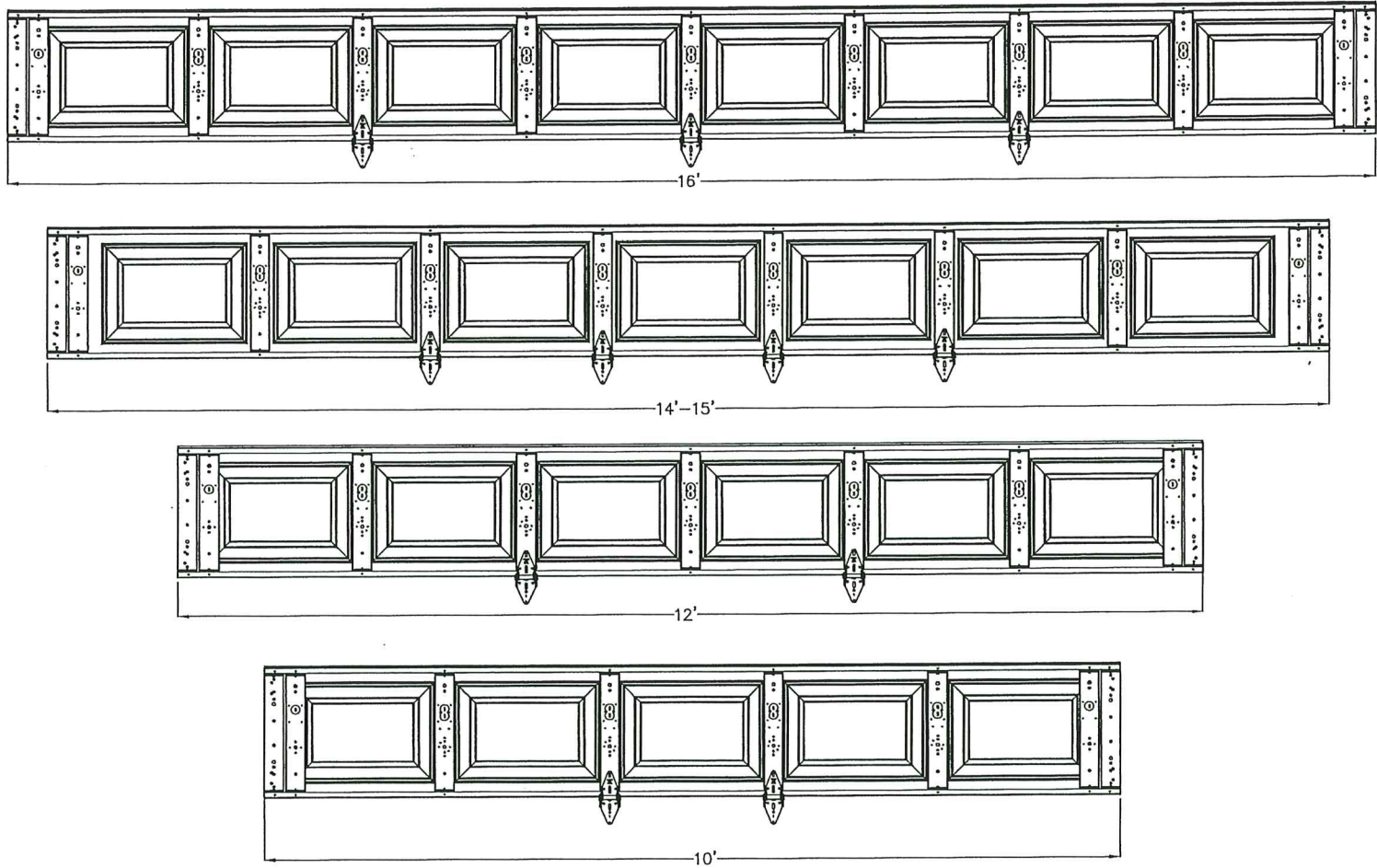
PROFESSIONAL ENGINEER'S SEAL PROVIDED ONLY FOR
VERIFICATION OF WINDLOAD CONSTRUCTION DETAILS.

PRODUCT APPROVED
as complying with the Florida
Building Code
NOA-No. **20-0416.05**
Approval Date **12/17/2020**
By *Heidi A. Malar*
Miami-Dade Product Control

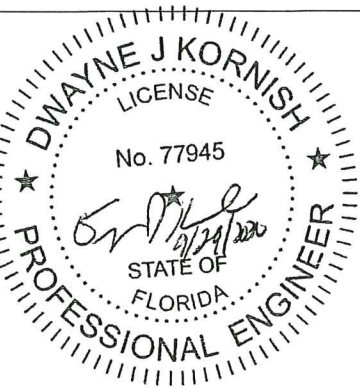
| | | | | | | | | | | | | |
|---|--|---|--|---|--|--|--|------------------------------|--|---|---------------------|--------------|
| THIRD ANGLE PROJECTION | | UNLESS OTHERWISE SPECIFIED | | APPROVALS | | DATE | | Wayne Dalton GARAGE DOORS | | PENSACOLA, FLORIDA | | |
|  | | INTERPRET DIMS & TOLS PER ASME Y14.5M | | TOLERANCES: | | DRAWN G.CLARK | | 4-11-19 | | DESCRIPTION 8024/8124/8224 16'2" MAX WIDTH | | |
| | | ALL DIMS ARE IN INCHES | | .X = ±.1 .XX = ±.03 .XXX = ±.010 ANGULAR = ±.5 ° | | CHECKED D. KORNISH | | 2-18-20 | | | | |
| | | DO NOT SCALE | | HOLES: | | APPROVED - | | - | | | | |
| | | DIMS CIRCLED WITH SYMBOL 'O' ARE CRITICAL TO QUALITY DESIGN | | < Ø.251 =+.004/- .003 Ø.251-Ø.500 =+.006/- .003 > Ø.500 =+.008/- .003 | | MATERIAL - | | - | | | | |
| A DIVISION OF OVERHEAD DOOR CORP 3395 ADDISON DRIVE PENSACOLA, FLORIDA 32514 (850)-474-9890 | | FEATURES & MUST MEET APPLICABLE IN-PROCESS INSPECTION STANDARDS. | | ALL GEOMETRY GOVERNED BY 3D CAD DATABASE: | | WINDLOAD SPECIFICATION OPTION CODE 1127 | | FINISH - | | SIZE D | DWG NO. D-365115 | REV P-04 |
| | | | | | | | | | | SCALE 1:12 | UOM = EA | SHEET 2 OF 4 |

NOTES: (UNLESS OTHERWISE SPECIFIED)

CENTER STILE AND INTERMEDIATE HINGE LOCATIONS

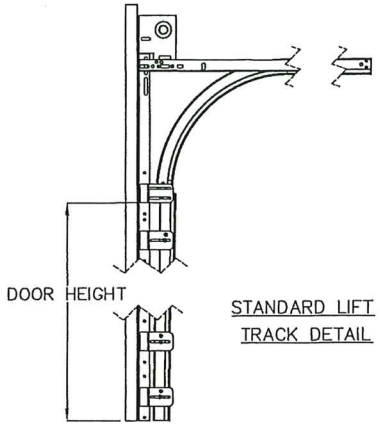


PRODUCT APPROVED
as complying with the Florida
Building Code
NOA-No. **20-0416.05**
Approval Date **12/17/2020**
By *[Signature]*
Miami-Dade Product Control

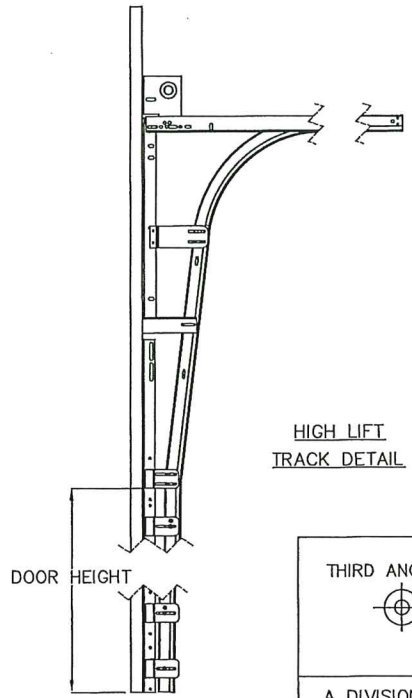


DWAYNE J. KORNISH, PE
4576 COUNTY ROAD 160
MOUNT HOPE, OHIO
FL PE 77945
TX PE 117868

PROFESSIONAL ENGINEER'S SEAL PROVIDED ONLY FOR
VERIFICATION OF WINDLOAD CONSTRUCTION DETAILS.

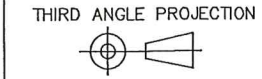


STANDARD LIFT
TRACK DETAIL



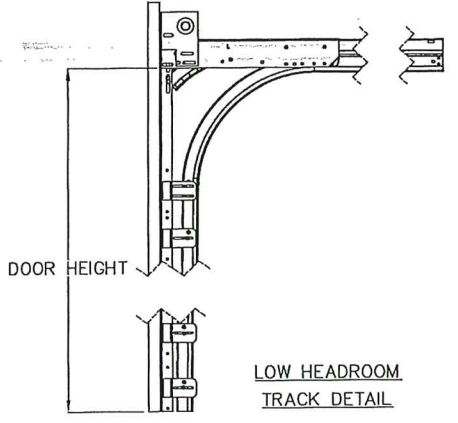
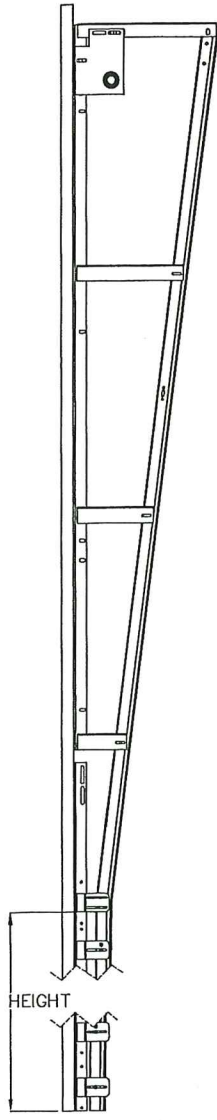
HIGH LIFT
TRACK DETAIL

PRODUCT REVISED
as complying with the Florida
Building Code
Acceptance No. **23-1120.008**
Expiration Date **12/17/2025**
By *[Signature]*
Miami-Dade Product Control



A DIVISION OF OVERHEAD
DOOR CORP
3395 ADDISON DRIVE
PENSACOLA, FLORIDA 32514
(850)-474-9890

VERTICAL LIFT
TRACK DETAIL



LOW HEADROOM
TRACK DETAIL

4" STRUT MAY OVERLAP HINGES, ATTACHED
WITH (2) 1/4-14x7/8" SELF DRILLING
CRIMPITE SCREWS AT EACH STILE
LOCATION

DETAIL N
SCALE 1 : 4

3" STRUT ATTACHED WITH (2) 1/4-14x7/8"
SELF DRILLING CRIMPITE SCREWS AT
EACH STILE LOCATION

DETAIL O
SCALE 1 : 4

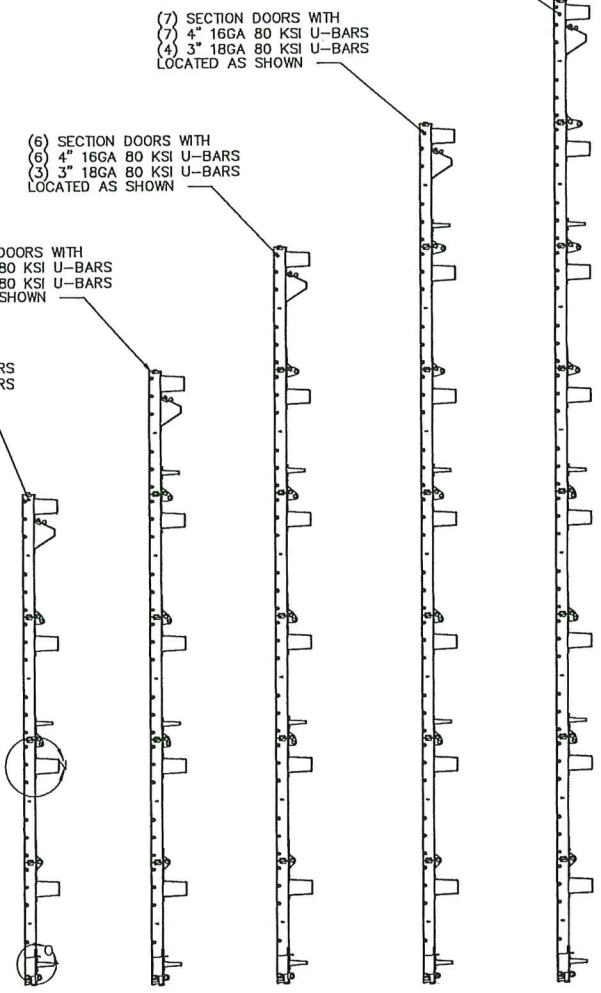
(5) SECTION DOORS WITH
(5) 4" 16GA 80 KSI U-BARS
(3) 3" 18GA 80 KSI U-BARS
LOCATED AS SHOWN

(4) SECTION DOORS WITH
(4) 4" 16GA 80 KSI U-BARS
(2) 3" 18GA 80 KSI U-BARS
LOCATED AS SHOWN



(6) SECTION DOORS WITH
(6) 4" 16GA 80 KSI U-BARS
(3) 3" 18GA 80 KSI U-BARS
LOCATED AS SHOWN

(7) SECTION DOORS WITH
(7) 4" 16GA 80 KSI U-BARS
(4) 3" 18GA 80 KSI U-BARS
LOCATED AS SHOWN

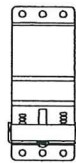
(8) SECTION DOORS WITH
(8) 4" 16GA 80 KSI U-BARS
(4) 3" 18GA 80 KSI U-BARS
LOCATED AS SHOWN



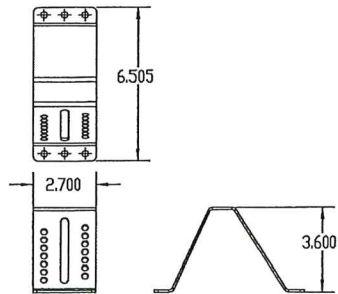
STRUT LOCATIONS
SCALE 1 : 16

| | | | | | | | | | |
|---|---|---|--|---------|-----------------------|---------|---|---------------------|--------------|
| THIRD ANGLE PROJECTION  | INTERPRET DIMS & TOLS PER ASME Y14.5M ALL DIMS ARE IN INCHES DO NOT SCALE | TOLERANCES: .X = ±.1 .XX = ±.03 .XXX = ±.010 ANGULAR = ±.5 ° | APPROVALS | | DATE | |  | PENSACOLA, FLORIDA | |
| | | | DRAWN G. CLARK | 4-11-19 | CHECKED D. KORNISH | 2-18-20 | | | |
| A DIVISION OF OVERHEAD DOOR CORP 3395 ADDISON DRIVE PENSACOLA, FLORIDA 32514 (850)-474-9890 | DIMS CIRCLED WITH SYMBOL 'Ø' ARE CRITICAL TO QUALITY DESIGN FEATURES & MUST MEET APPLICABLE IN-PROCESS INSPECTION STANDARDS. | HOLES: < Ø.251 =+.004/--.003 Ø.251-Ø.500 =+.006/--.003 > Ø.500 =+.008/--.003 | APPROVED | | - | | DESCRIPTION 8024/8124/8224 16'2" MAX WIDTH | | |
| | | | MATERIAL | | - | | | | |
| | | | FINISH | | - | | SIZE D | DWG NO. D-365115 | REV P-04 |
| | | | WINDLOAD SPECIFICATION OPTION CODE 1127 | | | | | | |
| ALL GEOMETRY GOVERNED BY 3D CAD DATABASE: | | | | | | | SCALE 1:12 | UOM = EA | SHEET 3 OF 4 |

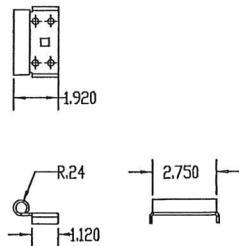
NOTES: (UNLESS OTHERWISE SPECIFIED)
1. FOR DIMENSIONS AND NOTE REFERENCES, REFER TO INDIVIDUAL DRAWINGS.



TOP FIXTURE ASSY.

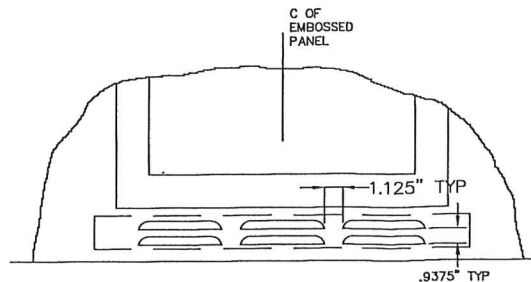


BASE TOP FIXTURE
11GA



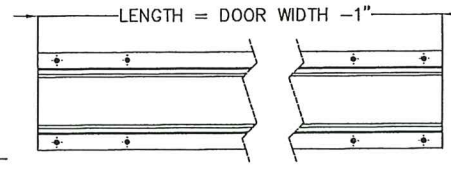
ROLLER CARRIER
13GA

TOP FIXTURE DETAILS

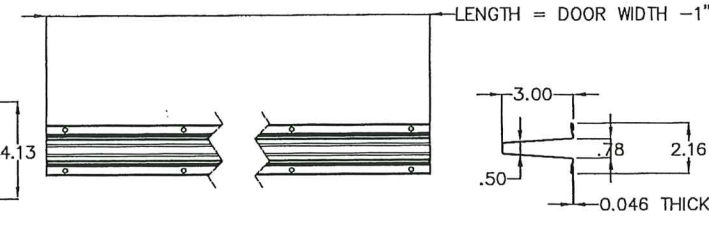


THE VENT IS AN OPTIONAL FEATURE AND
MUST BE SPECIFIED BY DISTRIBUTOR
VENTS PROVIDE 60 SQUARE INCHES PER VEHICLE.

VENT DETAILS

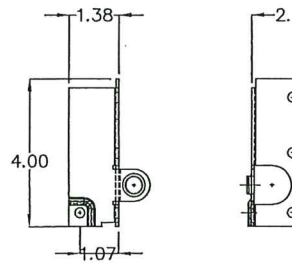


4" STRUT (UBAR)
80 KSI MIN. YIELD STRENGTH, 4" X 16GA

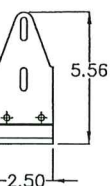
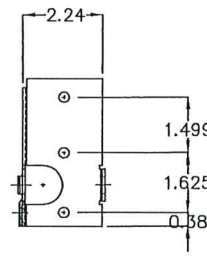


3" STRUT OPEN WL (UBAR)
80 KSI MIN. YIELD STRENGTH, 3" X 18GA

STRUT DETAILS

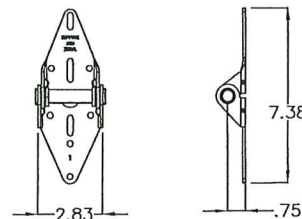


BOTTOM FIXTURE
14 GA

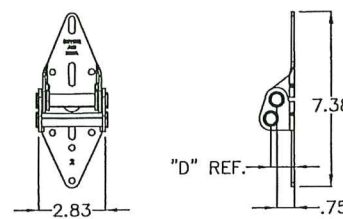


BRACKET TOP RES. LHR
12 GA

BOTTOM FIXTURE DETAILS

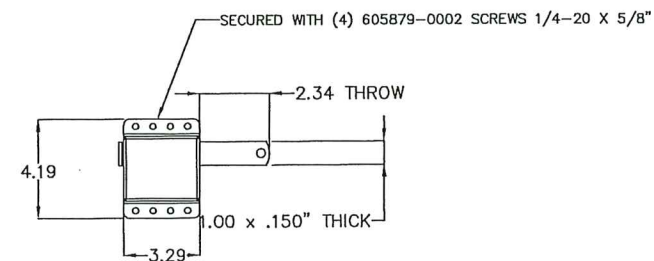


#1 END HINGE / CENTER HINGES
14GA



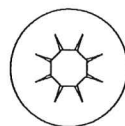
END HINGE
13GA

HINGE DETAILS



SIDE LOCK ASSY.

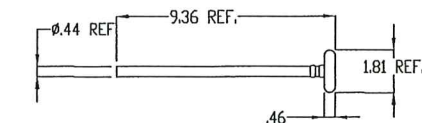
LOCK DETAILS



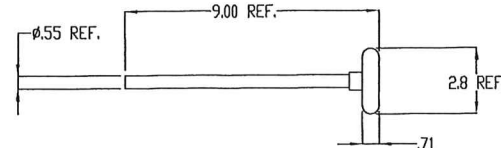
7/16" STEEL PUSHNUTS

PRODUCT APPROVED
as complying with the Florida
Building Code
NOA-No. **20-0416.05**
Approval Date **12/17/2020**

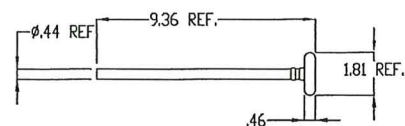
By *[Signature]*
Miami-Dade Product Control



ROLLER ASSY, 2" WL 1144 (STEEL ROLLER)



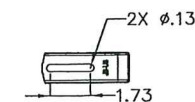
ROLLER ASSY, 3" WL 1144



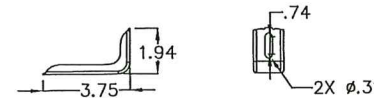
ROLLER STEM ASSY DETAILS (WITH PUSH NUTS)

ROLLER ASSY, 2" WL 1144 (NYLON ROLLER)

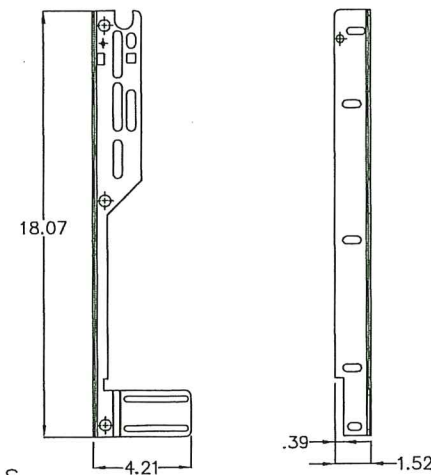
PRODUCT REVISED
as complying with the Florida
Building Code
Acceptance No. **23-1120.08**
Expiration Date **12/17/2025**
By *[Signature]*
Miami-Dade Product Control



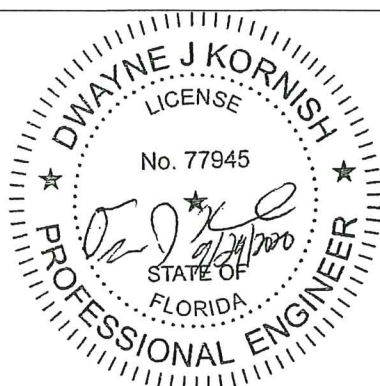
JAMB BRACKET
16GA



BRACKET DETAILS

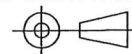


FLAG ANGLE
13GA



DWAYNE J. KORNISH, PE
4576 COUNTY ROAD 160
MOUNT HOPE, OHIO
FL PE 77945
TX PE 117868
PROFESSIONAL ENGINEER'S SEAL PROVIDED ONLY FOR
VERIFICATION OF WINDLOAD CONSTRUCTION DETAILS.

THIRD ANGLE PROJECTION



A DIVISION OF OVERHEAD
DOOR CORP
3395 ADDISON DRIVE
PENSACOLA, FLORIDA 32514
(850)-474-9890

INTERPRET DIMS & TOLS
PER ASME Y14.5M
ALL DIMS ARE IN
INCHES
DO NOT SCALE

DIMS CIRCLED WITH SYMBOL 'C'
ARE CRITICAL TO QUALITY DESIGN
FEATURES & MUST MEET APPLICABLE
IN-PROCESS INSPECTION STANDARDS.

UNLESS OTHERWISE SPECIFIED

TOLERANCES:

.X = ±.1
.XX = ±.03
.XXX = ±.010
ANGULAR = ±.5°

HOLES:

< Ø.251 = +.004/-0.003
Ø.251-Ø.500 = +.006/-0.003
> Ø.500 = +.008/-0.003

ALL GEOMETRY GOVERNED BY 3D_CAD DATABASE:

APPROVALS DATE

DRAWN G. CLARK 4-11-19

CHECKED D. KORNISH 2-18-20

APPROVED - -

MATERIAL - -

FINISH - -

WINDLOAD SPECIFICATION
OPTION CODE 1127

Wayne Dalton
GARAGE DOORS

PENSACOLA, FLORIDA

DESCRIPTION

8024/8124/8224 16"2" MAX WIDTH

SIZE

DWG NO.

D-365115

REV

P-04

SCALE 1:12

UOM = EA

SHEET 4 OF 4