



DEPARTMENT OF REGULATORY AND ECONOMIC RESOURCES (RER)  
BOARD AND CODE ADMINISTRATION DIVISION

## NOTICE OF ACCEPTANCE (NOA)

MIAMI-DADE COUNTY  
PRODUCT CONTROL SECTION

11805 SW 26 Street, Room 208  
Miami, Florida 33175-2474  
T (786) 315-2590 F (786) 315-2599

[www.miamidade.gov/economy](http://www.miamidade.gov/economy)

Wayne Dalton a Div. of Overhead Door Corporation  
3395 Addison Drive  
Pensacola, FL 32514

### SCOPE:

This NOA is being issued under the applicable rules and regulations governing the use of construction materials. The documentation submitted has been reviewed and accepted by Miami-Dade County RER-Product Control Section to be used in Miami Dade County and other areas where allowed by the Authority Having Jurisdiction (AHJ).

This NOA shall not be valid after the expiration date stated below. The Miami-Dade County Product Control Section (In Miami-Dade County) and/ or the AHJ (in areas other than Miami-Dade County) reserve the right to have this product or material tested for quality assurance purposes. If this product or material fails to perform in the accepted manner, the manufacturer will incur the expense of such testing and the AHJ may immediately revoke, modify, or suspend the use of such product or material within their jurisdiction. RER reserves the right to revoke this acceptance if it is determined by Miami-Dade County Product Control Section that this product or material fails to meet the requirements of the applicable building code.

This product is approved as described herein and has been designed to comply with the Florida Building Code, including the High Velocity Hurricane Zone.

**DESCRIPTION:** Series 8000 Steel Sectional Garage Door up to 9'-2" Wide w/ Optional EPS Insulation and Impact Resistant Glazing

**APPROVAL DOCUMENT:** Drawing No. D-329928, titled "8024/8124/8224 9'2" max. width", sheets 1 through 4 of 4, dated 02/18/2020, prepared by Wayne Dalton, signed and sealed by Dwayne J. Kornish, P.E. 09/29/2020, bearing the Miami-Dade County Product Control revision stamp with the Notice of Acceptance number and the expiration date by the Miami-Dade County Product Control Section.

**MISSILE IMPACT RATING:** Large and Small Missile Impact Resistant

**LABELING:** A permanent label with the manufacturer's name or logo, manufacturing addresses in Mount Hope, OH, model number, the positive and negative design pressure rating, indicate impact rated if applicable, installation instruction drawing reference number, approval number (NOA), the applicable test standards, and the statement reading 'Miami-Dade County Product Control Approved' is to be located on the door's side track, bottom angle, or inner surface of a panel.

**LIMITATION:** This door has not been tested for air infiltration.

**RENEWAL** of this NOA shall be considered after a renewal application has been filed and there has been no change in the applicable building code negatively affecting the performance of this product.

**TERMINATION** of this NOA will occur after the expiration date or if there has been a revision or change in the materials, use, and/or manufacture of the product or process. Misuse of this NOA as an endorsement of any product, for sales, advertising or any other purposes shall automatically terminate this NOA. Failure to comply with any section of this NOA shall be cause for termination and removal of NOA.

**ADVERTISEMENT:** The NOA number preceded by the words Miami-Dade County, Florida, and followed by the expiration date may be displayed in advertising literature. If any portion of the NOA is displayed, then it shall be done in its entirety.

**INSPECTION:** A copy of this entire NOA shall be provided to the user by the manufacturer or its distributors and shall be available for inspection at the job site at the request of the Building Official.

This NOA revises NOA # 20-0416.06 and consists of this page 1 and evidence pages E-1 & E-2 as well as approval document mentioned above.

The submitted documentation was reviewed by Helmy A. Makar, P.E., M.S.



*Helmy A. Makar*  
02/08/24

NOA No. 23-1120.09  
Expiration Date: 12/17/2025  
Approval Date: 02/08/2024  
Page 1

**Wayne Dalton a Div. of Overhead Door Corporation**

**NOTICE OF ACCEPTANCE: EVIDENCE SUBMITTED**

**1. Evidence submitted under previous approval NOA #20-0416.06**

**A. DRAWINGS**

1. Drawing No. **D-329928**, titled "8024/8124/8224 9'2" max. width", sheets 1 through 4 of 4, dated 02/18/2020, prepared by Wayne Dalton, signed and sealed by Dwayne J. Kornish, P.E. 09/29/2020.

**B. TESTS**

1. Test reports on 1) Uniform Static Air Pressure Test, Loading per FBC TAS 202-94  
2) Large Missile Impact Test per FBC, TAS 201-94  
3) Cyclic Wind Pressure Loading per FBC, TAS 203-94  
4) Forced Entry Test, per FBC, TAS 202-94  
5) Tensile Test per ASTM E8

along with marked-up drawings and installation diagram of Sectional Garage Doors 8000, prepared by Intertek, Test Report No. **K3485.01-801-18 R2**, dated 02/26/2020, revised on 08/04/2020, signed and sealed by Tyler Westerling, P.E.

**C. CALCULATIONS**

1. Anchor load calculations prepared by Wayne Dalton, dated 03/09/2020, signed and sealed by Dwayne J. Kornish, P.E.

**D. QUALITY ASSURANCE**


1. Miami-Dade Department of Regulatory and Economic Resources (RER)

**E. MATERIAL CERTIFICATIONS**

1. UL evaluation report on flame spread and smoke developed of STYROPEK EPS resins per ASTM E84, ANSI/UL723, prepared by UL, LLC, Evaluation Report # **UL ER38219-01**, dated 04/08/2015.
2. Test report on ignition temperature of Drew Foam Company EPS per ASTM D1929-16, prepared by Element Materials Technology, Test Report # **19-06-P0083**, dated 06/24/2019, signed by Rubaiyat Khondker.
3. Notice of Acceptance No. **18-0918.06** issued to Plaskolite, LLC for its TUFFAK Polycarbonate Sheets, approved on 11/15/2018 and expiring on 08/27/2022.

**F. STATEMENTS**

1. Statement letter of code conformance to the 6<sup>th</sup> edition (2017) and 7<sup>th</sup> edition (2020) FBC issued by Wayne Dalton, dated 06/10/2020, signed and sealed by Dwayne J. Kornish, P.E.
2. Statement letter of no financial interest issued by Wayne Dalton, dated 09/29/2020, signed and sealed by Dwayne J. Kornish, P.E.

  
\_\_\_\_\_  
**Helmy A. Makar, P.E., M.S.**  
Product Control Section Supervisor  
NOA No. 23-1120.09  
Expiration Date: 12/17/2025  
Approval Date: 02/08/2024

**Wayne Dalton a Div. of Overhead Door Corporation**

**NOTICE OF ACCEPTANCE: EVIDENCE SUBMITTED**

**2. NEW EVIDENCE SUBMITTED**

**A. DRAWINGS**

1. None.

**B. TESTS**

1. None.

**C. CALCULATIONS**

1. None.

**D. QUALITY ASSURANCE**

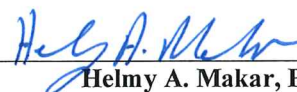
1. Miami-Dade Department of Regulatory and Economic Resources (RER)

**E. MATERIAL CERTIFICATIONS**

1. None.

**F. STATEMENTS**

1. Statement letter of code conformance to the 8<sup>th</sup> edition (2023) FBC issued by Wayne Dalton, dated 01/25/2024, signed and sealed by Dwayne J. Kornish, P.E., on 01/29/24.

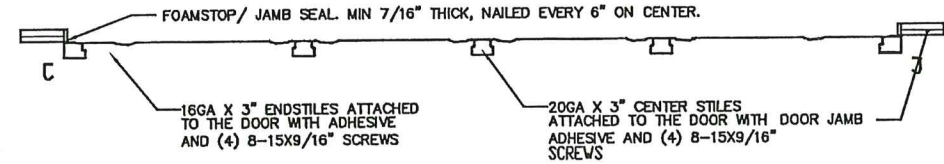


Helmy A. Makar, P.E., M.S.  
Product Control Section Supervisor  
NOA No. 23-1120.09  
Expiration Date: 12/17/2025  
Approval Date: 02/08/2024

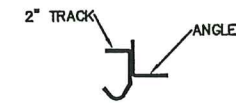


NOTES: (UNLESS OTHERWISE SPECIFIED)

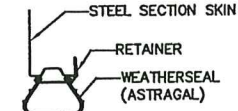
1. RATED DESIGN LOAD +46/-52 PSF.
2. SECTION HEIGHTS MAY VARY TO CREATE VARIOUS DOOR HEIGHTS, 20.8" MAXIMUM SECTION HEIGHT.
3. FOAMSTOP OR JAMB SEAL ON ALL JAMBS REQUIRED TO MEET NEGATIVE DESIGN PRESSURES NAILED 6" O.C..
4. TESTED IN ACCORDANCE WITH DADE COUNTY PROTOCOLS TAS 201-94, TAS 202-94, & TAS 203-94.
5. DOOR SKIN MUST BE 25,000 PSI MIN. YIELD STRENGTH.
6. JAMB LOAD CALCULATIONS:  
 $(1/2 \text{ DOOR WIDTH})(1 \text{ FT OF HEIGHT})(\text{DESIGN PRESSURE})$   
 $(4.567)(1 \text{ FOOT})(46.00 \text{ AND } -52.00)(210.082/-237.484) \text{ LB.}$
7. JAMB FASTENER REQUIREMENTS:  
 $F_x = (1/2 \text{ DOOR WIDTH})(1 \text{ FT OF HEIGHT})(\text{DESIGN PRESSURE})$   
 $F_x = 237.484 \text{ LBS.}$
8. DOOR SKIN MATERIAL SHALL BE GALVANIZED ACCORDING TO ASTM A-525 TO G90 MIN, WITH BAKED-ON PRIMER, AND BAKED-ON POLYESTER PAINT TOP COAT.
9. FOR ANCHORING INTO WOOD, USE ONE 5/16" LAG SCREW PER JAMB BRACKET WITH 1-1/2" EMBEDMENT INTO SOUTHERN PINE (G=0.55) OR BETTER.
10. APPROVED INSULATED AND NON-INSULATED: 8024 (24GA), 8124 (24GA), 8224 (24GA), 0.0209" MIN STEEL.
11. WELD SLOT ON ANGLE AND 3/32" X 1" LONG ON 12" CENTERS. "IF WELDING MOUNTING OPTION IS CHOSEN."
12. LIFT UP MECHANISM-MANUAL, CHAIN LIFT, OR OPERATOR IS NOT PART OF THIS APPROVAL.
13. STANDARD LIFT, HIGH LIFT, VERTICAL LIFT, AND LOW HEADROOM TRACK IS AVAILABLE. FOR LOW HEADROOM LIFT CONDITIONS TOP BRACKET SHALL BE 13 GA LHR 7/4 TOP BRACKET WITH A MIN OF (3) 1/4 - 14 X 7/8" SELF DRILLING CRIMPTITE SCREWS IN LIEU OF THE BRACKET SHOWN ON DRAWING. U-BAR ON TOP SECTION SHALL BE INSTALLED ON TOP OF LHR TOP BRACKETS.
14. ATTACH STRUTS WITH (2) 1/4-14x7/8" SELF DRILLING CRIMPTITE SCREWS AT ALL STILE LOCATIONS, TYP. LOCATED WITHIN 6" , +/- 3" FROM TOP OF SECTION.
15. KEY LOCK, SLIDE LOCK, OR DRAWBAR OPERATOR REQUIRED.
16. IMPACT RESISTANT GLAZING OPTION- IMPACT RESISTANT GLAZING SYSTEM MAY BE INSTALLED INTERMEDIATE SECTION OR TOP SECTION. GLAZING SHALL BE 1/4" POLYCARBONATE. 13-3/4" X 20-1/8" MAXIMUM SIZE, FASTENED WITH # 8 X 1" SMS: 3X MIN ALONG THE HORIZONTAL AND 2X MIN ALONG THE VERTICAL. SEE DETAIL F-F ON SHEET 2 FOR ASSEMBLY DETAILS.
17. THE DESIGN OF THE SUPPORTING STRUCTURAL ELEMENTS SHALL BE THE RESPONSIBILITY OF THE PROFESSIONAL OF RECORD FOR THE BUILDING OR STRUCTURE AND IN ACCORDANCE WITH CURRENT BUILDING CODES FOR THE LOADS LISTED ON THIS DRAWING.
18. VENTS PROVIDE 60 SQUARE INCHES PER VEHICLE.



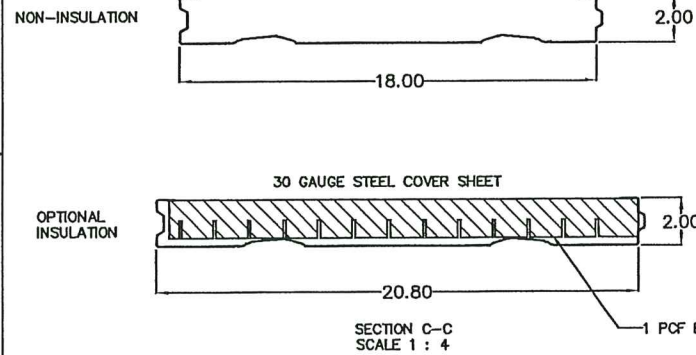
SECTION A-A  
SCALE 1 : 12



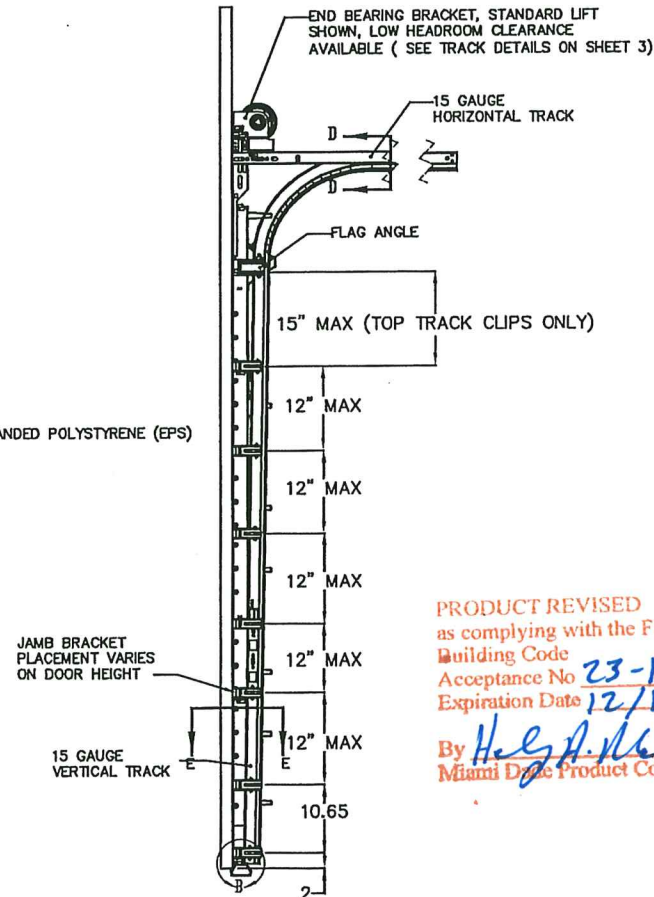
SECTION D-D  
SCALE 1 : 4



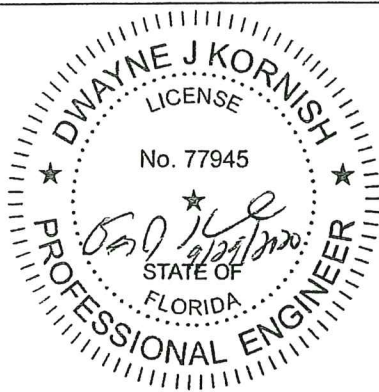
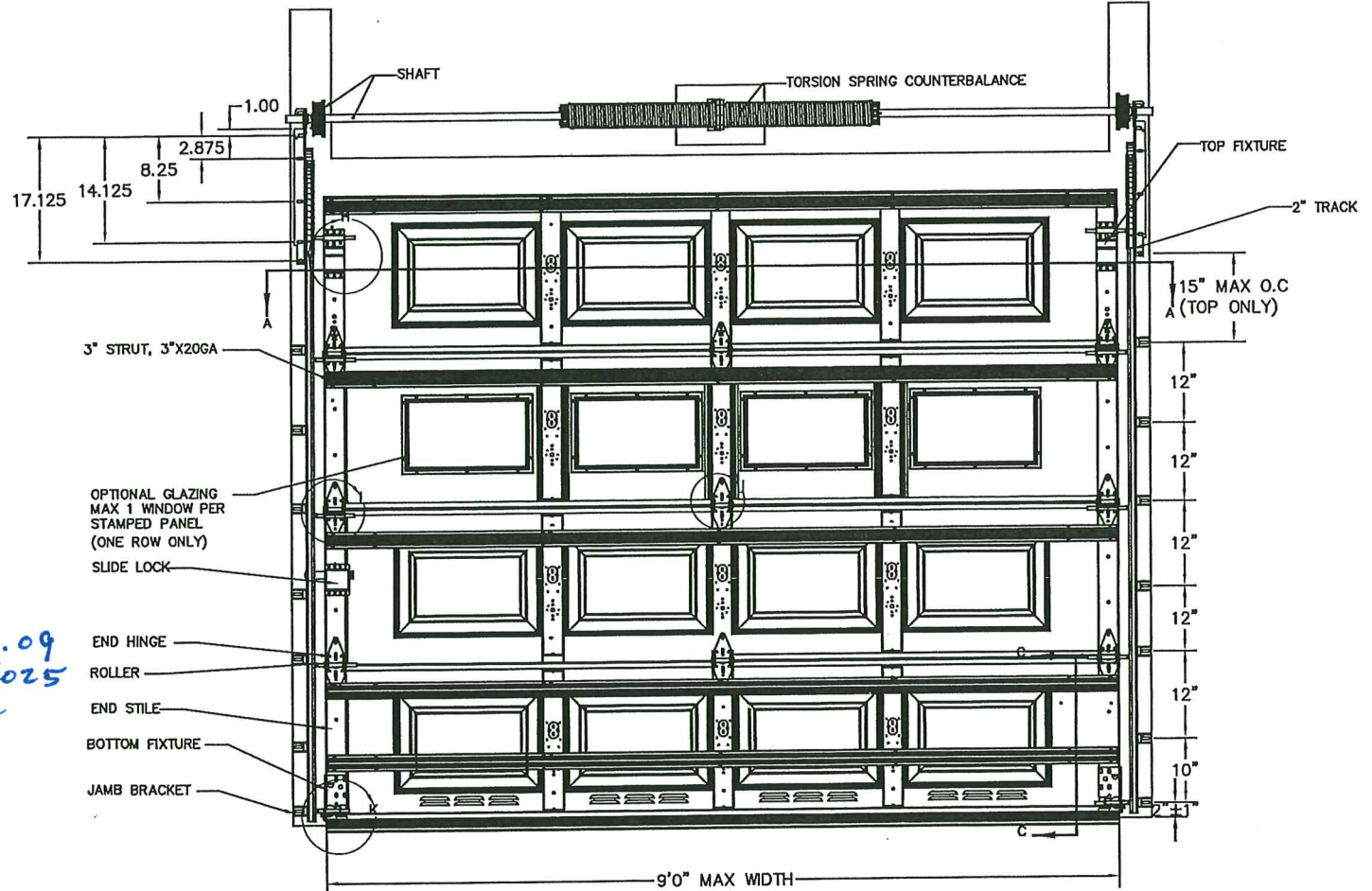
DETAIL B  
SCALE 1 : 4



SECTION C-C  
SCALE 1 : 4

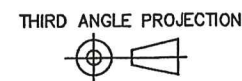


PRODUCT REVISED  
as complying with the Florida  
Building Code  
Acceptance No. 23-1120.09  
Expiration Date 12/17/2025  
By *H. J. Kornish*  
Miami-Dade Product Control



DWAYNE J. KORNISH, PE  
4576 COUNTY ROAD 160  
MOUNT HOPE, OHIO  
FL PE 77945  
TX PE 117868  
PROFESSIONAL ENGINEER'S SEAL PROVIDED ONLY FOR  
VERIFICATION OF WINDLOAD CONSTRUCTION DETAILS.

**PRODUCT APPROVED**  
as complying with the Florida  
Building Code  
NOA-No. 20-0416.06  
Approval Date 12/17/2020  
By *H. J. Kornish*  
Miami-Dade Product Control



A DIVISION OF OVERHEAD  
DOOR CORP  
3395 ADDISON DRIVE  
PENSACOLA, FLORIDA 32514  
(850)-474-9890

UNLESS OTHERWISE SPECIFIED  
INTERPRET DIMS & TOLS  
PER ASME Y14.5M  
ALL DIMS ARE IN  
INCHES  
DO NOT SCALE  
DIMS CIRCLED WITH SYMBOL  
ARE CRITICAL TO QUALITY DESIGN  
FEATURES & MUST MEET APPLICABLE  
IN-PROCESS INSPECTION STANDARDS.

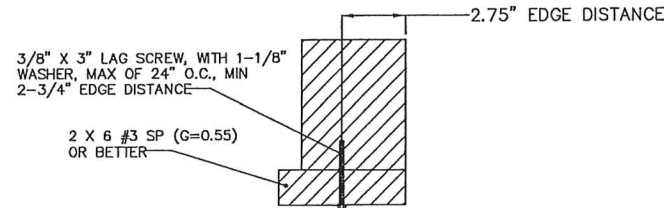
TOLERANCES:  
.X = ±.1  
.XX = ±.03  
.XXX = ±.010  
ANGULAR = ±.5 °  
HOLES:  
< Ø.251 = +.004/- .003  
Ø.251-Ø.500 = +.006/- .003  
> Ø.500 = +.008/- .003

APPROVALS DATE  
DRAWN G. CLARK 4-11-19  
CHECKED D. KORNISH 2-18-20  
APPROVED - -  
MATERIAL - -  
FINISH - -  
WINDLOAD SPECIFICATION  
OPTION CODE 1300

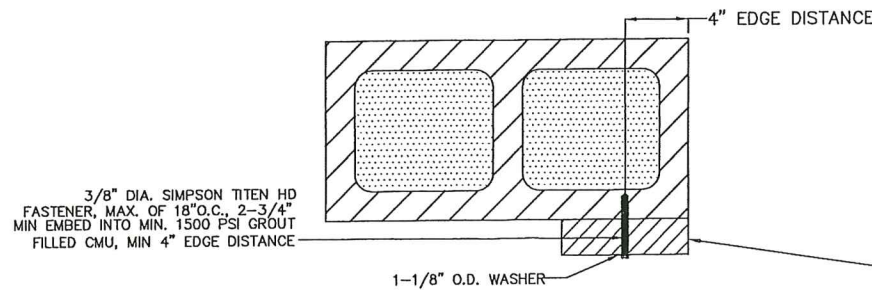
Wayne Dalton  
PENSACOLA, FLORIDA  
DESCRIPTION  
8024/8124/8224 9'0" MAX WIDTH  
SIZE DWG NO. REV  
D D-329928 P-04  
SCALE 1:12 UOM = EA SHEET 1 OF 4



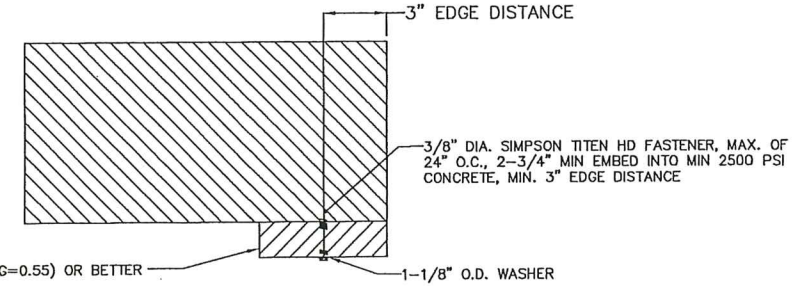
NOTES: (UNLESS OTHERWISE SPECIFIED)



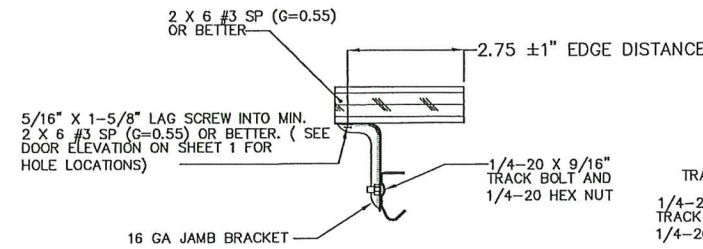
WOOD MOUNTED TO #3 SOUTHERN PINE SUBSTRATE



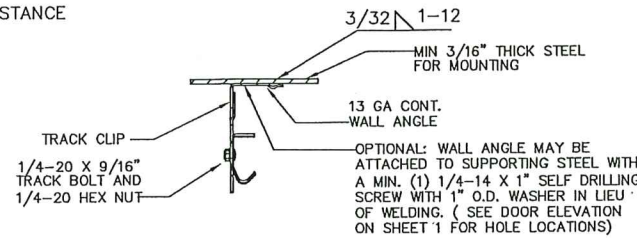
WOOD MOUNTED TO GROUT FILLED MASONRY BLOCK DETAIL



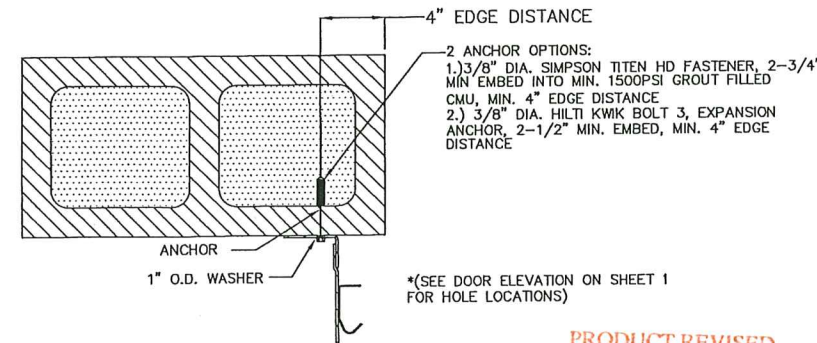
WOOD MOUNTED TO 2500PSI CONCRETE DETAIL



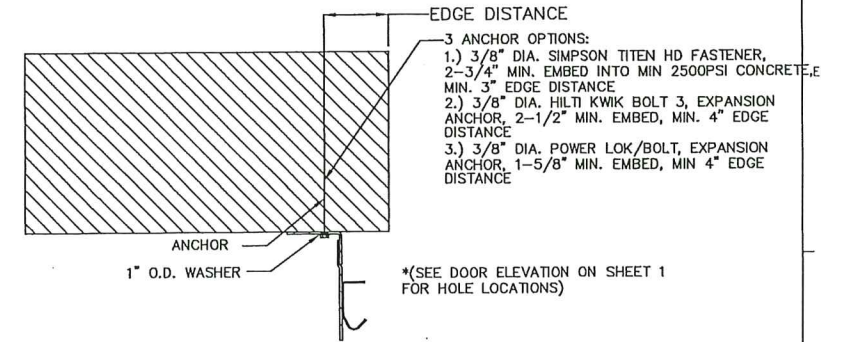
MOUNTING TO WOOD JAMB DETAIL



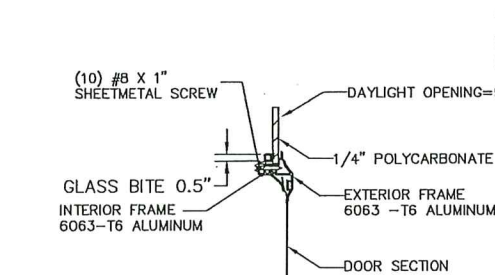
MOUNTING TO STEEL JAMB DETAIL



MOUNTING TO GROUT FILLED MASONRY BLOCK DETAIL

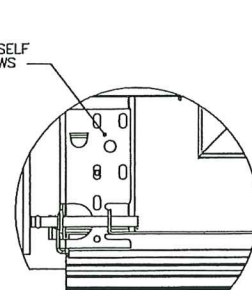


MOUNTING TO 2500PSI CONCRETE DETAIL

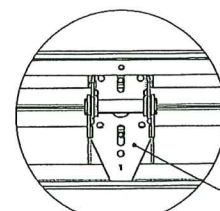


WINDOW DETAIL

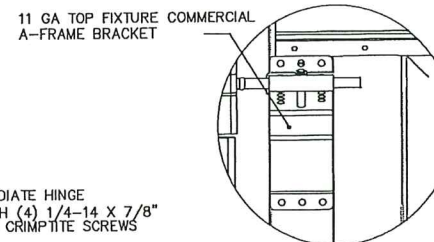
SECTION F - F  
SCALE 1 : 4



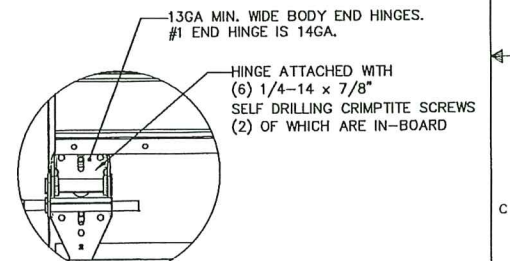
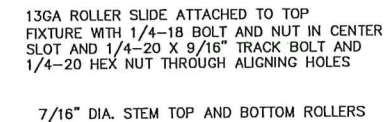
DETAIL K  
SCALE 1 : 4



DETAIL J  
SCALE 1 : 4



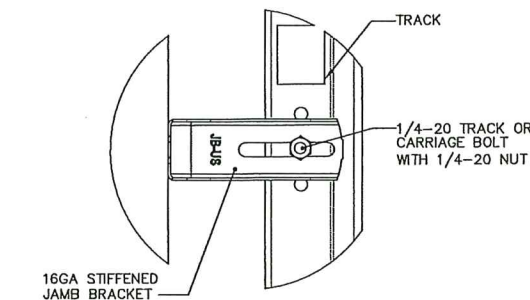
DETAIL H  
SCALE 1 : 4



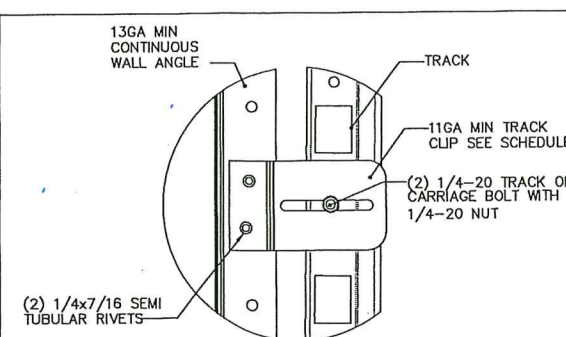
DETAIL K  
SCALE 1 : 4

PRODUCT REVISED  
as complying with the Florida  
Building Code  
Acceptance No. 23-1120.09  
Expiration Date 12/17/2025  
By *Heidi A. Miller*  
Miami-Dade Product Control

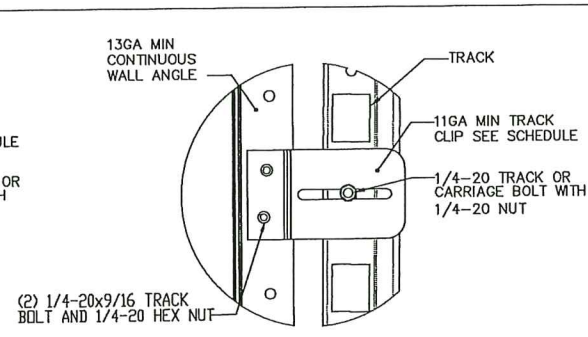
OPTIONAL WALL ANGLE TRACK



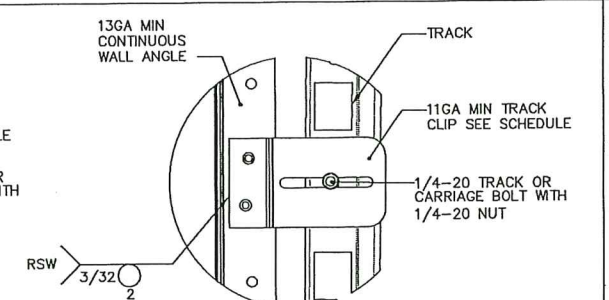
TYPICAL TRACK AND JAMB FASTENERS DETAIL



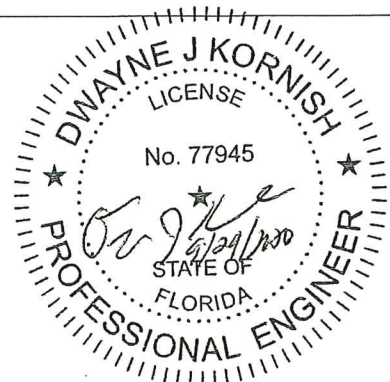
TYPICAL TRACK CLIP RIVETING DETAIL



TYPICAL TRACK CLIP BOLTING DETAIL



TYPICAL TRACK CLIP WELDING DETAIL



DWAYNE J. KORNISH, PE  
4576 COUNTY ROAD 160  
MOUNT HOPE, OHIO  
FL PE 77945  
TX PE 117868

PROFESSIONAL ENGINEER'S SEAL PROVIDED ONLY FOR  
VERIFICATION OF WINDLOAD CONSTRUCTION DETAILS.

**PRODUCT APPROVED**  
as complying with the Florida  
Building Code  
NOA-No. 20-0416.06

Approval Date 12/17/2020

By *Heidi A. Miller*  
Miami-Dade Product Control

THIRD ANGLE PROJECTION



A DIVISION OF OVERHEAD  
DOOR CORP  
3395 ADDISON DRIVE  
PENSACOLA, FLORIDA 32514  
(850)-474-9890

UNLESS OTHERWISE SPECIFIED  
INTERPRET DIMS & TOLS  
PER ASME Y14.5M  
ALL DIMS ARE IN  
INCHES  
DO NOT SCALE  
DIMS CIRCLED WITH SYMBOL  
ARE CRITICAL TO QUALITY DESIGN  
FEATURES & MUST MEET APPLICABLE  
IN-PROCESS INSPECTION STANDARDS.

TOLERANCES:

.X = ±.1  
.XX = ±.03  
.XXX = ±.010  
ANGULAR = ±.5°

HOLES:

< Ø.251 = +.004/-0.003  
Ø.251-Ø.500 = +.006/-0.003  
> Ø.500 = +.008/-0.003

ALL GEOMETRY GOVERNED BY 3D CAD DATABASE:

APPROVALS DATE

DRAWN G. CLARK 4-11-19

CHECKED D. KORNISH 2-18-20

APPROVED - -

MATERIAL -

FINISH -

WINDLOAD SPECIFICATION

OPTION CODE 1300



PENSACOLA, FLORIDA

DESCRIPTION

8024/8124/8224 9'0" MAX WIDTH

SIZE DWG NO.

D D-329928

REV

P-04

SCALE 1:12

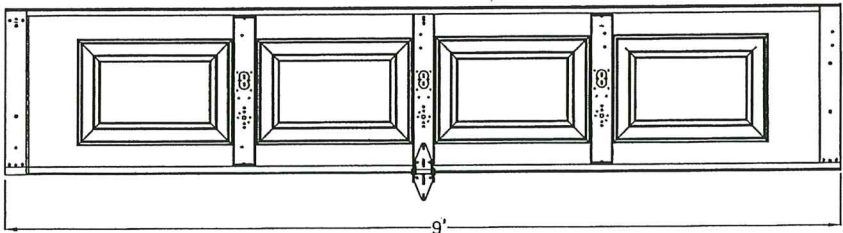
UOM = EA

SHEET 2 OF 4

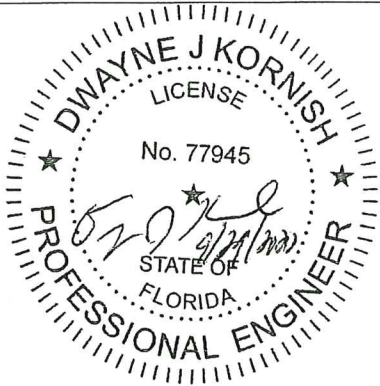


NOTES: (UNLESS OTHERWISE SPECIFIED)

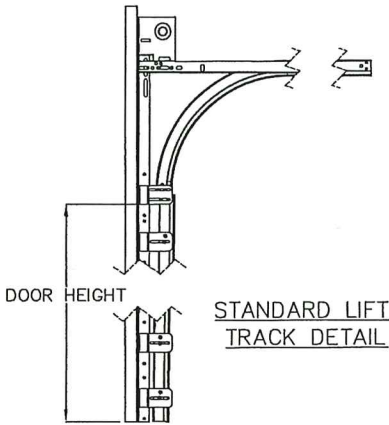
CENTER STILE AND INTERMEDIATE HINGE LOCATIONS



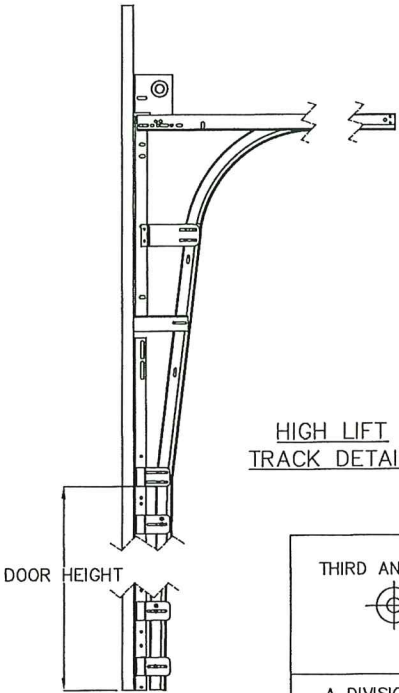
**PRODUCT APPROVED**  
as complying with the Florida  
Building Code  
NOA-No. **20-0416.06**  
Approval Date **12/17/2020**  
By *[Signature]*  
**Miami-Dade Product Control**



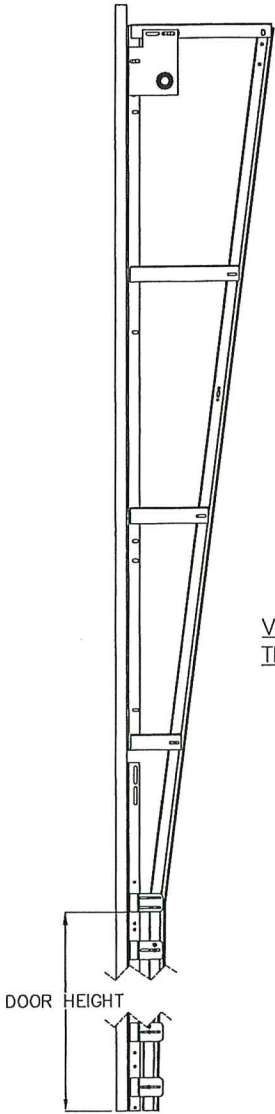
DWAYNE J. KORNISH, PE  
4576 COUNTY ROAD 160  
MOUNT HOPE, OHIO  
FL PE 77945  
TX PE 117868  
PROFESSIONAL ENGINEER'S SEAL PROVIDED ONLY FOR  
VERIFICATION OF WINDLOAD CONSTRUCTION DETAILS.



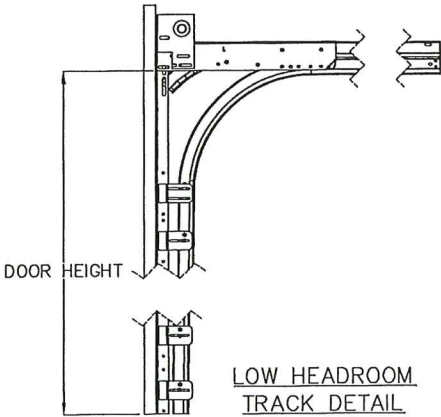
STANDARD LIFT  
TRACK DETAIL



HIGH LIFT  
TRACK DETAIL

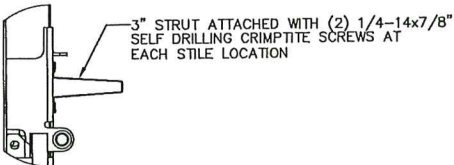


VERTICAL LIFT  
TRACK DETAIL

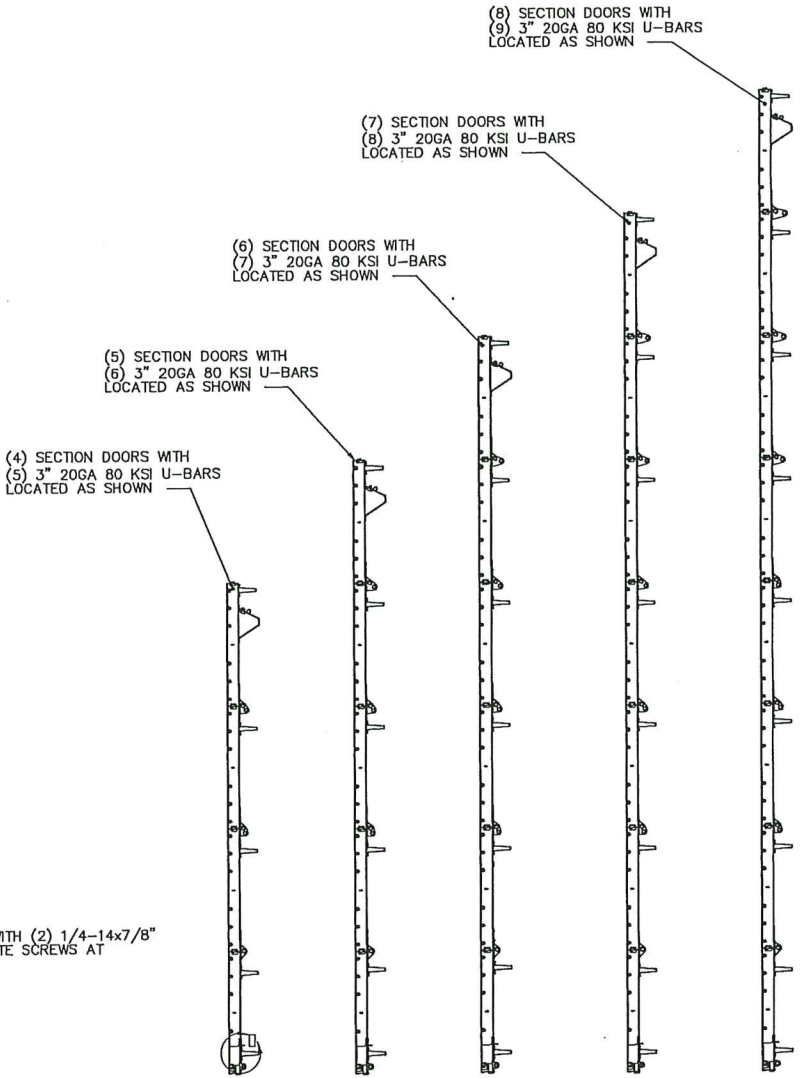


LOW HEADROOM  
TRACK DETAIL

**PRODUCT REVISED**  
as complying with the Florida  
Building Code  
Acceptance No **23-1122.09**  
Expiration Date **2/17/2025**  
By *[Signature]*  
**Miami-Dade Product Control**



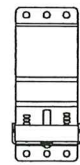
DETAIL 0  
SCALE 1 : 4



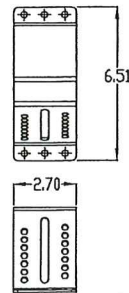
STRUT LOCATIONS  
SCALE 1 : 16

THIRD ANGLE PROJECTION	UNLESS OTHERWISE SPECIFIED	APPROVALS		DATE		Wayne Dalton GARAGE DOORS	PENSACOLA, FLORIDA
		DRAWN	G. CLARK	4-11-19	CHECKED	D. KORNISH	2-18-20
A DIVISION OF OVERHEAD DOOR CORP 3395 ADDISON DRIVE PENSACOLA, FLORIDA 32514 (850)-474-9890	INTERPRET DIMS & TOLS PER ASME Y14.5M ALL DIMS ARE IN INCHES DO NOT SCALE DIMS CIRCLED WITH SYMBOL 'O' ARE CRITICAL TO QUALITY DESIGN FEATURES & MUST MEET APPLICABLE IN-PROCESS INSPECTION STANDARDS.	TOLERANCES:		APPROVED		DESCRIPTION	
		.X = ±.1		MATERIAL		8024/8124/8224 9'0" MAX WIDTH	
		.XX = ±.03		FINISH		SIZE DWG NO.	
		.XXX = ±.010		WINDLOAD SPECIFICATION OPTION CODE 1300		D-329928	
		ANGULAR = ±.5 °				REV	
		HOLES:				P-04	
		< Ø.251 = +.004/- .003				SCALE 1:12	
		Ø.251-Ø.500 = +.006/- .003				UOM = EA	
		> Ø.500 = +.008/- .003				SHEET 3 OF 4	
		ALL GEOMETRY GOVERNED BY 3D CAD DATABASE:					

NOTES: (UNLESS OTHERWISE SPECIFIED)  
1. FOR DIMENSIONS AND NOTE REFERENCES, REFER TO INDIVIDUAL DRAWINGS.



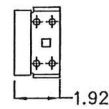
TOP FIXTURE ASSY.



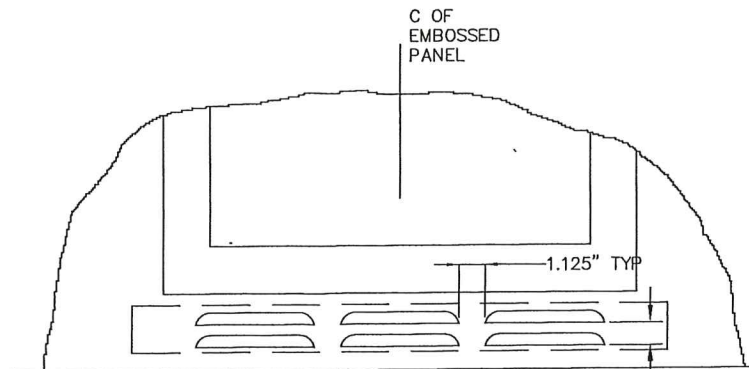
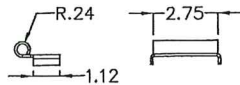
BASE TOP FIXTURE  
11GA



TOP FIXTURE DETAILS

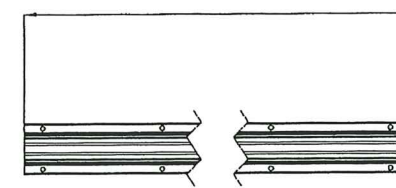


ROLLER CARRIER  
13GA



THE VENT IS AN OPTIONAL FEATURE AND .9375\"/>

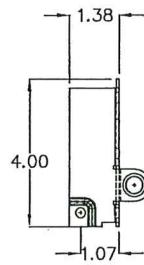
VENT DETAILS



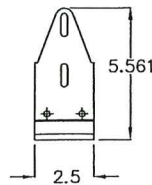
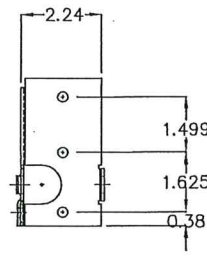
LENGTH = DOOR WIDTH -1\"/>

3\"/>

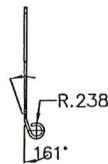
STRUT DETAILS



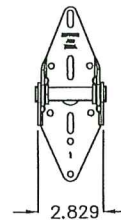
BOTTOM FIXTURE  
14 GA



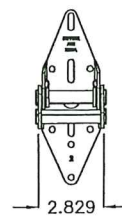
BRACKET, TOP, RES. LHR  
12 GA



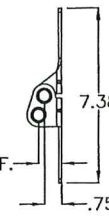
BOTTOM FIXTURE DETAILS



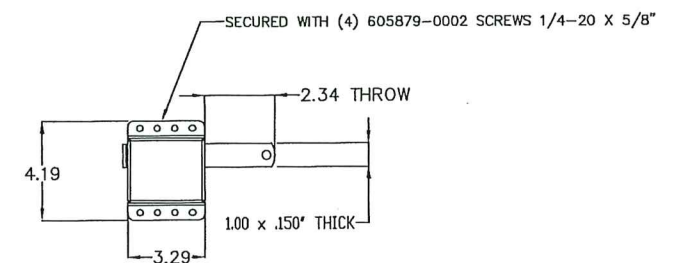
#1 END HINGE / CENTER HINGES  
14GA



END HINGE  
13GA



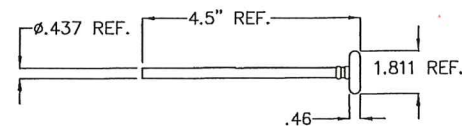
HINGE DETAILS



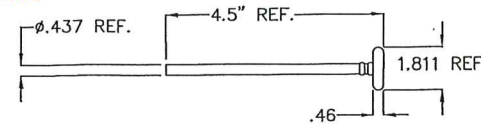
SIDE LOCK ASSY.

LOCK DETAILS

PRODUCT REVISED  
as complying with the Florida  
Building Code  
Acceptance No. 23-1120.09  
Expiration Date 12/17/2025  
By *H. J. Kornish*  
Miami-Dade Product Control

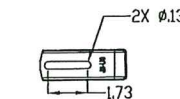


ROLLER ASSY, 2\"/>

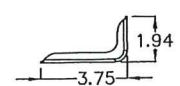


ROLLER ASSY, 2\"/>

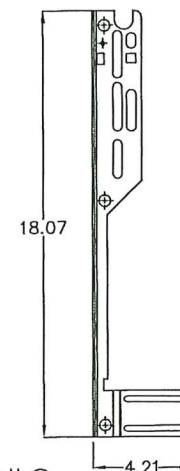
ROLLER STEM ASSY DETAILS



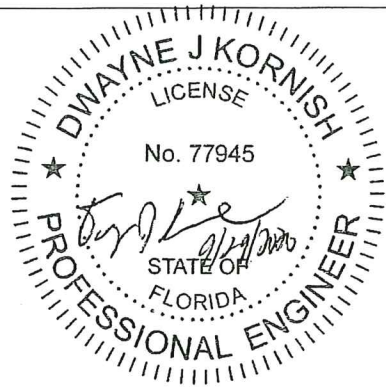
JAMB BRACKET  
16GA



BRACKET DETAILS



FLAG ANGLE  
13GA



DWAYNE J. KORNISH, PE  
4576 COUNTY ROAD 160  
MOUNT HOPE, OHIO  
FL PE 77945  
TX PE 117868

PROFESSIONAL ENGINEER'S SEAL PROVIDED ONLY FOR  
VERIFICATION OF WINDLOAD CONSTRUCTION DETAILS.

PRODUCT APPROVED  
as complying with the Florida  
Building Code

NOA-No. 20-0416.06

Approval Date 12/17/2020

By *H. J. Kornish*  
Miami-Dade Product Control

THIRD ANGLE PROJECTION



A DIVISION OF OVERHEAD  
DOOR CORP  
3395 ADDISON DRIVE  
PENSACOLA, FLORIDA 32514  
(850)-474-9890

INTERPRET DIMS & TOLS  
PER ASME Y14.5M  
ALL DIMS ARE IN  
INCHES  
DO NOT SCALE

DIMS CIRCLED WITH SYMBOL ARE CRITICAL TO QUALITY DESIGN  
FEATURES & MUST MEET APPLICABLE  
IN-PROCESS INSPECTION STANDARDS.

UNLESS OTHERWISE SPECIFIED

TOLERANCES:

.X = ±.1  
.XX = ±.03  
.XXX = ±.010  
ANGULAR = ±.5°

HOLES:

< Ø.251 = +.004/- .003  
Ø.251-Ø.500 = +.006/- .003  
> Ø.500 = +.008/- .003

ALL GEOMETRY GOVERNED BY 3D CAD DATABASE:

APPROVALS DATE

DRAWN G. CLARK 4-11-19

CHECKED D. KORNISH 2-18-20

APPROVED - -

MATERIAL - -

FINISH - -

WINDLOAD SPECIFICATION

OPTION CODE 1300

Wayne Dalton  
GARAGE DOORS

PENSACOLA, FLORIDA

DESCRIPTION  
8024/8124/8224 9'0\"/>

SIZE DWG NO.  
D D-329928

REV  
P-04

SCALE 1:12 UOM = EA SHEET 4 OF 4