



DEPARTMENT OF REGULATORY AND ECONOMIC RESOURCES (RER)
BOARD AND CODE ADMINISTRATION DIVISION

NOTICE OF ACCEPTANCE (NOA)

MIAMI-DADE COUNTY
PRODUCT CONTROL SECTION

11805 SW 26 Street, Room 208
Miami, Florida 33175-2474
T (786) 315-2590 F (786) 315-2599

www.miamidade.gov/building

Wayne Dalton a Div. of Overhead Door Corporation
3395 Addison Drive
Pensacola, FL 32514

SCOPE: This NOA is being issued under the applicable rules and regulations governing the use of construction materials. The documentation submitted has been reviewed and accepted by Miami-Dade County RER-Product Control Section to be used in Miami Dade County and other areas where allowed by the Authority Having Jurisdiction (AHJ). This NOA shall not be valid after the expiration date stated below. The Miami-Dade County Product Control Section (In Miami Dade County) and/or the AHJ (in areas other than Miami Dade County) reserve the right to have this product or material tested for quality assurance purposes. If this product or material fails to perform in the accepted manner, the manufacturer will incur the expense of such testing and the AHJ may immediately revoke, modify, or suspend the use of such product or material within their jurisdiction. RER reserves the right to revoke this acceptance, if it is determined by Miami-Dade County Product Control Section that this product or material fails to meet the requirements of the applicable building code.

This product is approved as described herein and has been designed to comply with the Florida Building Code, including the High Velocity Hurricane Zone.

DESCRIPTION: Models 6600/8300/8350/8500/8600/5150/5200 Insulated Steel Sectional Garage Door up to 18ft.-2in. Wide with Optional Impact Resistant Glazing (DP +43.0, -48.0 PSF)

APPROVAL DOCUMENT: Drawing No. **D-365453**, titled "Windload Models 6600/8300/8350/8500/8600/5150/5200, +43/-48 PSF Dade County, 18'2" Max. Width", sheets 1 through 4 of 4, dated 10/28/21, prepared by manufacturer, signed and sealed by Junfeng Qian, P.E., bearing the Miami-Dade County Product Control Revision stamp with the NOA number and expiration date by the Miami-Dade County Product Control Section.

MISSILE IMPACT RATING: Large and Small Missile Impact Resistant

LABELING: Each unit shall bear a permanent label with the manufacturer's name or logo, manufacturing addresses in Pensacola, FL or Mt. Hope, OH, model number, the positive and negative design pressure rating, indicate impact rated if applicable, installation instruction drawing reference number, approval number (NOA), the applicable test standards, and the statement reading 'Miami-Dade County Product Control Approved' is to be located on the door's side track, bottom angle, or inner surface of a panel.

LIMITATION: This door has not been tested for air infiltration.

RENEWAL of this NOA shall be considered after a renewal application has been filed and there has been no change in the applicable building code negatively affecting the performance of this product.

TERMINATION of this NOA will occur after the expiration date or if there has been a revision or change in the materials, use, and/or manufacture of the product or process. Misuse of this NOA as an endorsement of any product, for sales, advertising or any other purposes shall automatically terminate this NOA. Failure to comply with any section of this NOA shall be cause for termination and removal of NOA.

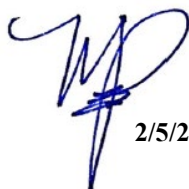
ADVERTISEMENT: The NOA number preceded by the words Miami-Dade County, Florida, and followed by the expiration date may be displayed in advertising literature. If any portion of the NOA is displayed, then it shall be done in its entirety.

INSPECTION: A copy of this entire NOA shall be provided to the user by the manufacturer or its distributors and shall be available for inspection at the job site at the request of the Building Official.

This NOA **revises NOA No. 22-0315.06** and consists of this page 1 and evidence pages E-1, E-2 and E-3, as well as approval document mentioned above.

The submitted documentation was reviewed by **Manuel Perez, P.E.**




2/5/24

NOA No. 23-1120.17
Expiration Date: August 04, 2027
Approval Date: February 15, 2024
Page 1

Wayne Dalton a Div. of Overhead Door Corporation

NOTICE OF ACCEPTANCE: EVIDENCE SUBMITTED

1. EVIDENCE SUBMITTED UNDER PREVIOUS NOA's

A. DRAWINGS

1. Manufacturer's die drawings and sections.
(Submitted under NOA No. 22-0315.06)
2. Drawing No. **D-365453**, titled "Windload Models 6600/8300/8350/8500/8600/5150/5200, +43/-48 PSF Dade County, 18'2" Max Width", sheets 1 through 4 of 4, dated 10/28/21, prepared by manufacturer, signed and sealed by Junfeng Qian, P.E.
(Submitted under NOA No. 22-0315.06)

B. TESTS

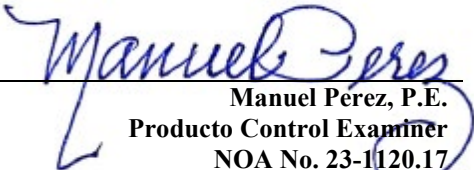
1. Test reports on: 1) Uniform Static Air Pressure Test, Loading per FBC, TAS 202-94
2) Large Missile Impact Test per FBC, TAS 201-94
3) Cyclic Wind Pressure Loading per FBC, TAS 203-94
4) Forced Entry Test, per FBC, TAS 202-94
5) Tensile Test per ASTM E8
along with marked-up drawings and installation diagram of a series 6600/8300/8350/8500/8600/5150/5200, 18'-2" sectional garage door, prepared by Intertek, Test Report No. **L7622.01-801-18-R0**, dated 02/24/22, signed and sealed by Tyler Westerling, P.E.
(Submitted under NOA No. 22-0315.06)
2. Test report on Standard Test Method for Evaluation of Painted or Coated Specimens Subjected to Corrosive Environments per ASTM D1654-08(2016)-e1 and Standard Practice for Operating Salt Spray (Fog) Apparatus per ASTM B117-16 and on garage door exterior steel, prepared by Intertek, Report No. **J4650.02-106-18 R0**, dated 05/24/19, signed by Gary T. Hartman, P.E.
(Submitted under NOA No. 20-1106.11)

C. CALCULATIONS

1. Anchor verification calculations prepared by manufacturer, dated 03/04/22, signed and sealed by Junfeng Qian, P.E.
(Submitted under NOA No. 22-0315.06)

D. QUALITY ASSURANCE

1. Miami-Dade Department of Regulatory and Economic Resources (RER)


Manuel Perez, P.E.
Product Control Examiner
NOA No. 23-1120.17
Expiration Date: August 04, 2027
Approval Date: February 15, 2024

Wayne Dalton a Div. of Overhead Door Corporation

NOTICE OF ACCEPTANCE: EVIDENCE SUBMITTED

1. EVIDENCE SUBMITTED UNDER PREVIOUS NOA's (CONTINUED)

E. MATERIAL CERTIFICATIONS

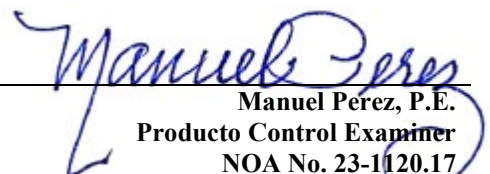
1. Test report on Ignition Temperatures of Plastic per ASTM D1929-16 on BASF Corp. Elastopor P19670R polyurethane foam insulation, prepared by QAI Laboratories, Inc., Test Report No. **RJ6431F-1**, dated 09/28/18, signed by Bryan Ortega.
2. Test report on Surface Burning Characteristics of Building Materials per ASTM E84-18b on BASF Corp. Elastopor P19670R polyurethane foam insulation, prepared by QAI Laboratories, Inc., Test Report No. **RJ6648F-4**, dated 12/12/18, signed by Bryan Ortega.
3. Notice of Acceptance No. **18-0918.06** issued to **Plaskolite, LLC** for its **TUFFAK Polycarbonate Sheets**, approved on 11/15/18 and expiring on 08/27/22.

F. STATEMENTS

1. Statement letter of conformance, complying with **FBC 7th Edition (2020)**, dated March 07, 2022, issued by manufacturer, signed and sealed by Junfeng Qian, P.E.
(Submitted under NOA No. 22-0315.06)
2. Statement letter of no financial interest, dated March 07, 2022, issued by manufacturer, signed and sealed by Junfeng Qian, P.E.
(Submitted under NOA No. 22-0315.06)

G. OTHERS

1. None.


Manuel Pérez, P.E.
Product Control Examiner
NOA No. 23-1120.17
Expiration Date: August 04, 2027
Approval Date: February 15, 2024

Wayne Dalton a Div. of Overhead Door Corporation

NOTICE OF ACCEPTANCE: EVIDENCE SUBMITTED

2. NEW EVIDENCE SUBMITTED

A. DRAWINGS

1. None.

B. TESTS

1. None.

C. CALCULATIONS

1. None.

D. QUALITY ASSURANCE

1. Miami-Dade Department of Regulatory and Economic Resources (RER)

E. MATERIAL CERTIFICATIONS


1. Notice of Acceptance No. **22-0317.02** issued to **Plaskolite, LLC** for their “**TUFFAK Polycarbonate Sheets**” dated 04/21/22 expiring on 08/27/27.

F. STATEMENTS

1. Statement letter of conformance, complying with **FBC 8th Edition (2023)** and of no financial interest, dated January 25, 2024, issued by manufacturer, signed and sealed by Dwayne J. Kornish, P.E.

G. OTHERS

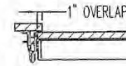
1. Notice of Acceptance No. **22-0315.06**, issued to Wayne Dalton a Div. of Overhead Door Corporation, for their Models 6600/8300/8350/8500/8600/5150/5200 Insulated Steel Sectional Garage Door up to 18ft.-2in. Wide with Optional Impact Resistant Glazing (DP +43.0, -48 PSF), approved on 08/04/22 and expiring on 08/04/27.


Manuel Pérez, P.E.
Product Control Examiner
NOA No. 23-1120.17
Expiration Date: August 04, 2027
Approval Date: February 15, 2024

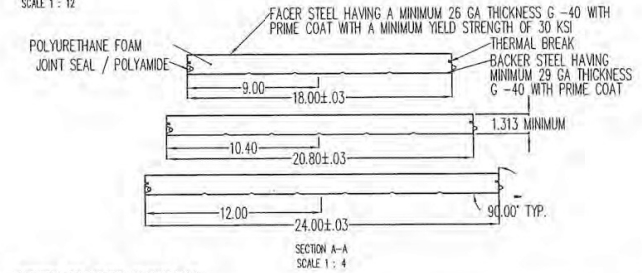
NOTES: (UNLESS OTHERWISE SPECIFIED)

1. RATED DESIGN LOAD +43/-48 PSF.
2. SECTION HEIGHTS MAY VARY TO CREATE VARIOUS DOOR HEIGHTS, 24" MAXIMUM SECTION HEIGHT.
3. MINIMUM 1" OVERLAP ON BOTH JAMBS REQUIRED TO MEET NEGATIVE DESIGN PRESSURES.
4. TESTED IN ACCORDANCE WITH DADE COUNTY PROTOCOLS TAS 201-94, TAS 202-94, & TAS 203-94.
5. DOOR SKIN MUST BE 30,000 PSI MIN. YIELD STRENGTH.
6. JAMB LOAD CALCULATIONS:
 $(1/2 \text{ DOOR WIDTH})(1 \text{ FT OF HEIGHT})(\text{DESIGN PRESSURE})$
 $(10.07)(1.00)(145.00 \text{ AND } -48.00) = (389.88/-435.22) \text{ LB}$
7. JAMB FASTENER REQUIREMENTS:
 $F_y = (1/2 \text{ DOOR WIDTH})(1 \text{ FT OF HEIGHT})(\text{DESIGN PRESSURE})$
 $F_y = 390 \text{ LBS.}$
8. DOOR SKIN MATERIAL SHALL BE GALVANIZED ACCORDING TO ASTM A-525 TO C40 MIN. WITH BAKED-ON PRIMER, AND BAKED-ON POLYESTER PAINT TOP COAT.
9. FOR ANCHORING INTO WOOD, USE ONE 5/16" LAG SCREW PER TRACK BRACKET WITH 1-1/2" EMBEDMENT INTO SOUTHERN PINE (G=0.55) OR BETTER.
10. WELD SLOT ON ANGLE 3/32" X 1" LONG ON 12" CENTERS. IF WELDING MOUNTING OPTION IS CHOSEN.
11. LIFT UP MECHANISM-MANUAL, CHAIN LIFT, OR OPERATOR IS NOT PART OF THIS APPROVAL.
12. STANDARD LIFT, HIGH LIFT, VERTICAL LIFT, AND LOW HEADROOM LIFT CONDITIONS. TOP BRACKET SHALL BE 13 GA LHR 7/4 TOP BRACKET WITH A MIN OF (3) 1/4 - 14 X 7/8" SELF DRILLING CRIMPITE SCREWS IN LIEU OF THE BRACKET SHOWN ON DRAWING. U-BAR ON TOP SECTION SHALL BE INSTALLED ON TOP OF LHR TOP BRACKETS.
13. ATTACH STRUTS WITH (2) 1/4-14x7/8" SELF DRILLING CRIMPITE SCREWS AT ALL HINGE LOCATIONS AND (2) BETWEEN EACH INTERMEDIATE HINGE. TYP. STRUT LOCATED AT TOP AND/OR AT BOTTOM OF SECTION.
14. KEY LOCK, OR SIDE LOCK REQUIRED.
15. IMPACT RESISTANT GLAZING OPTION- IMPACT RESISTANT GLAZING SYSTEM MAY BE INSTALLED IN ALL SECTIONS. GLAZING SHALL BE 1/4" POLYCARBONATE. 44.1" X 16.8" MAXIMUM SIZE. FASTENED WITH # 8 X 1" SWS- 5X MAX ALONG THE HORIZONTAL AND 5X MAX ALONG THE VERTICAL. SEE DETAIL F-F ON SHEET 2 FOR ASSEMBLY DETAILS.
16. THE DESIGN OF THE SUPPORTING STRUCTURAL ELEMENTS SHALL BE THE RESPONSIBILITY OF THE PROFESSIONAL OF RECORD FOR THE BUILDING OR STRUCTURE AND IN ACCORDANCE WITH CURRENT BUILDING CODES FOR THE LOADS LISTED ON THIS DRAWING.
17. A 4-1/2" X 6" X 22 GA BACKER PLATE IS TO BE LOCATED AT EVERY INTERMEDIATE AND OUTER END HINGE LOCATIONS.
18. COMPLIES WITH THE REQUIREMENTS OF IBC/IRC 2018.

REVISIONS			
ER	REV	DESCRIPTION	DATE
ER	-	NEW DRAWING	10/28/21



SECTION B-B
SCALE 1 : 12

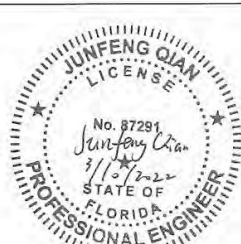


PRODUCT REVISED
 As complying with the Florida Building Code
 NOA-No. **23-1120.17**
 Expiration Date: **08/04/2027**

By: *Manuel Jara*
 Miami-Dade Product Control

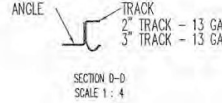
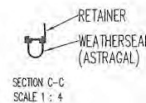
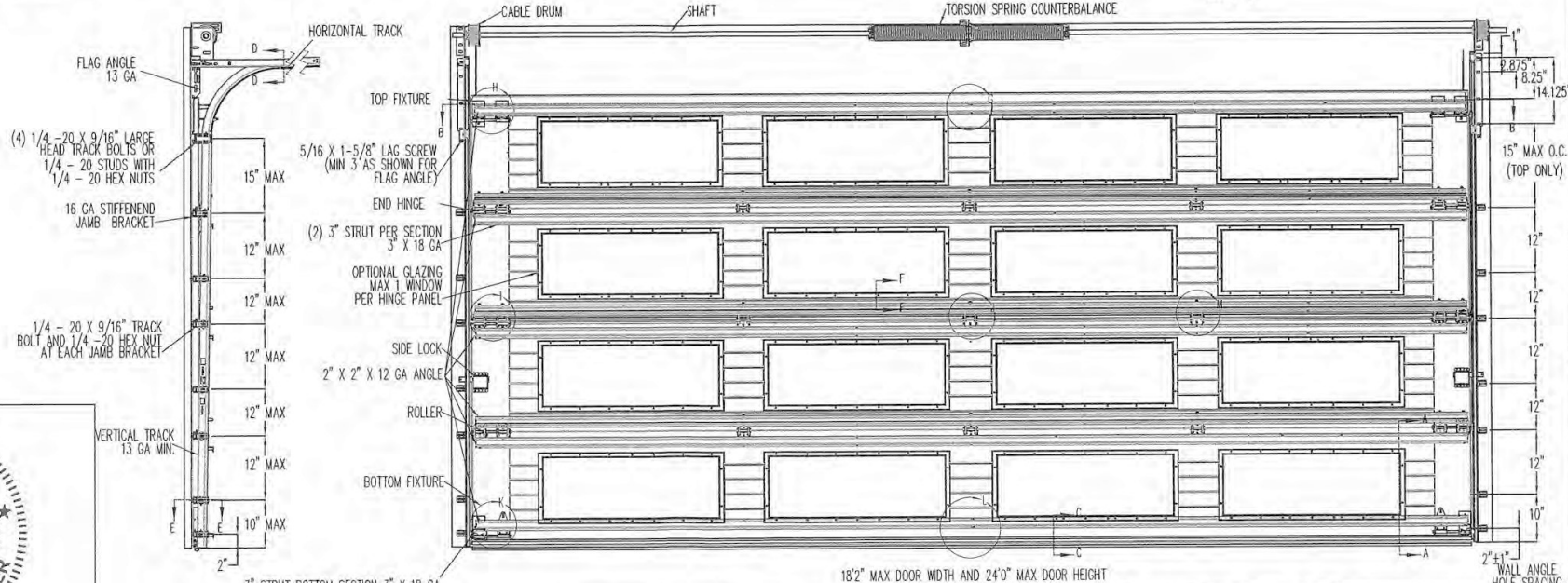
PRODUCT APPROVED
 as complying with the Florida Building Code
 NOA-No. **22-0315.06**
 Approval Date **08/04/2022**

By: *[Signature]*
 Miami-Dade Product Control



JUNFENG QIAN, PE
 42501 S. STATE HWY 121, SUITE 200
 LEWISVILLE, TEXAS
 FL PE 87291 TX PE 130813

PROFESSIONAL ENGINEER'S SEAL PROVIDED ONLY FOR VERIFICATION OF WINDLOAD CONSTRUCTION DETAILS.



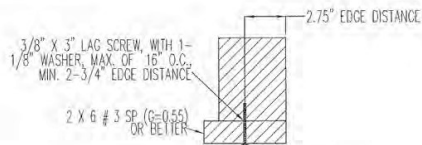
A DIVISION OF OVERHEAD DOOR CORP
 3395 ADDISON DRIVE
 PENSACOLA, FLORIDA 32514
 (850)-474-9880

INTERPRET DIMS & TOLS PER ASME Y14.5M
 ALL DIMS ARE IN INCHES
 DO NOT SCALE
 DIMS CIRCLED WITH SYMBOL ARE CRITICAL TO QUALITY DESIGN FEATURES & MUST MEET APPLICABLE IN-PROCESS INSPECTION STANDARDS.

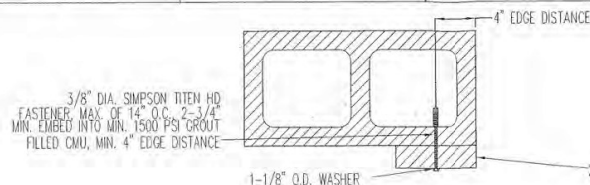
UNLESS OTHERWISE SPECIFIED
 TOLERANCES:
 .X = ± .1
 .XX = ± .03
 .XXX = ± .010
 ANGULAR = ± .5°
 HOLES:
 < Ø.251 = +.004/- .003
 Ø.251-Ø.500 = +.006/- .003
 > Ø.500 = +.008/- .003
 ALL GEOMETRY GOVERNED BY 3D CAD DATABASE.

APPROVALS	DATE
DRAWN J. QIAN	10/28/21
CHECKED D. KORNISH	10/28/21
APPROVED	-
MATERIAL	-
FINISH	-

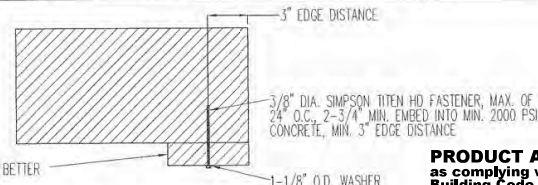
Wayne Dalton	PENSACOLA, FLORIDA
DESCRIPTION	WINDLOAD MODELS 6600/8300/8350/8500/8600 /5150/5200, +43/-48 PSF DADE COUNTY, 182" MAX WIDTH
SIZE DWG NO.	D-365453
SCALE 1:12	UOM = EA
SHEET 1 OF 4	REV -



WOOD MOUNTED TO #3 SOUTHERN PINE SUBSTRATE



WOOD MOUNTED TO GROUT FILLED MASONRY BLOCK DETAIL

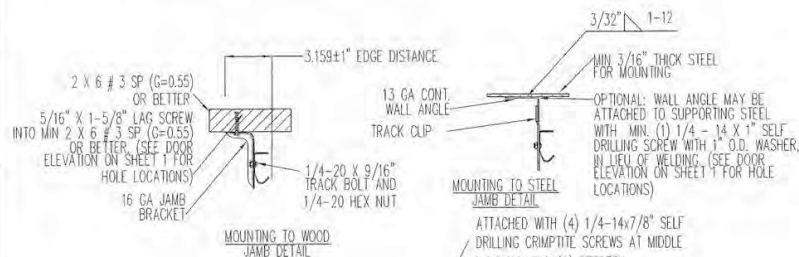


WOOD MOUNTED TO 2000 PSI CONCRETE DETAIL

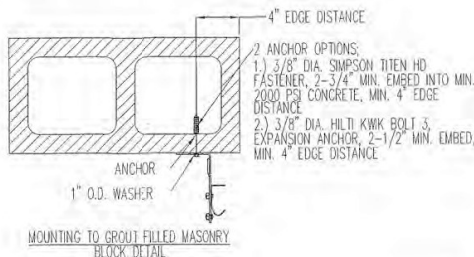
PRODUCT APPROVED
as complying with the Florida
Building Code
NOA-No. 22-0315.06

Approval Date 08/04/2022

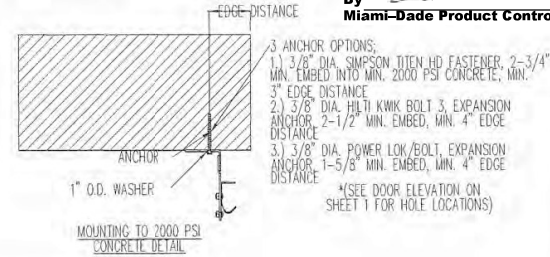
By *Manuel Jern*
Miami-Dade Product Control



MOUNTING TO STEEL JAMB DETAIL

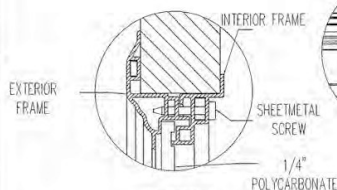


MOUNTING TO GROUT FILLED MASONRY BLOCK DETAIL



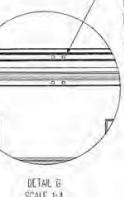
MOUNTING TO 2000 PSI CONCRETE DETAIL

*(SEE DOOR ELEVATION ON SHEET 1 FOR HOLE LOCATIONS)

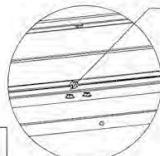


WINDOW DETAIL

SECTION F-F
SCALE 1:4



DETAIL G
SCALE 1:4



DETAIL H
SCALE 1:4



DETAIL I
SCALE 1:4



DETAIL J
SCALE 1:4

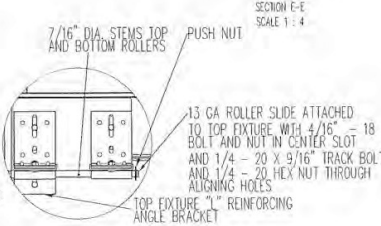


DETAIL K
SCALE 1:4

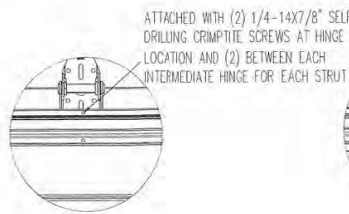


DETAIL L
SCALE 1:4

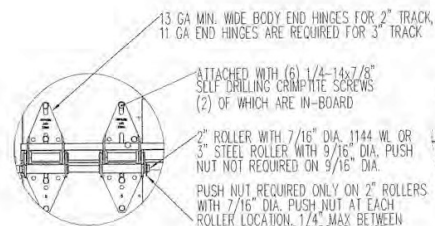
ALL 2X2X12GA ANGLE SHALL BE ATTACHED WITH (2) 1/4-14X7/8" SELF DRILLING CRIMPITE SCREWS SIDE BY SIDE AT EACH HINGE LOCATION AND BETWEEN ALL END HINGES AND INTERMEDIATE HINGES. A MINIMUM OF (18) FASTENERS ARE TO BE USED.



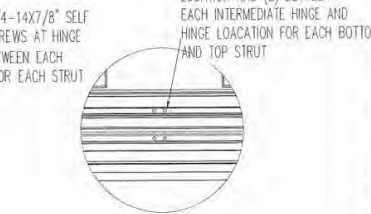
DETAIL H
SCALE 1:4



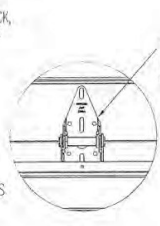
DETAIL I
SCALE 1:4



DETAIL J
SCALE 1:4



DETAIL K
SCALE 1:4



DETAIL L
SCALE 1:4

14 GA INTERMEDIATE HINGE ATTACHED WITH (4) 1/4-14X7/8" SELF DRILLING CRIMPITE SCREWS

PRODUCT REVISED
As complying with the Florida
Building Code

NOA-No. 23-1120.17
Expiration Date: 08/04/2027


By *Manuel Jern*
Miami-Dade Product Control

IMPACT FRAME SIZE	DAYLIGHT OPENING (DLO)	SCREW QTY
19.2 X 15.3	15 X 11	10
19.8 X 16.8	15.75 X 12.75	10
40 X 12.8	35.8 X 8.6	14
42 X 16.8	37.8 X 12.75	14
41.2 X 7.1	37 X 3	12
44.1 X 15.5	40.13 X 11.25	16



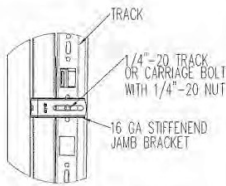
JUNFENG QIAN, PE
2501 S. STATE HWY 121, SUITE 200
LEWISVILLE, TEXAS
FL PE 87291 TX PE 130813

PROFESSIONAL ENGINEER'S SEAL PROVIDED ONLY FOR VERIFICATION OF WINDLOAD CONSTRUCTION DETAILS.

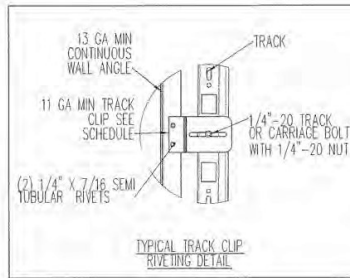
THIRD ANGLE PROJECTION		UNLESS OTHERWISE SPECIFIED		APPROVALS		DATE		Wayne Dalton RAVANT DOORS		PENSACOLA, FLORIDA	
		INTERPRET DIMS & TOLS PER ASME Y14.5M		TOLERANCES:		DRAWN J. QIAN 10/28/21					
		ALL DIMS ARE IN INCHES		X = ±.1		CHECKED D. KORNISH 10/28/21					
		DO NOT SCALE		XX = ±.03		APPROVED					
				XXX = ±.010		MATERIAL				DESCRIPTION	
				ANGULAR = ±.5°						WINDLOAD MODELS 6600/8300/8350/8500/8600	
				HOLTS:						+43/-48 PSF, DADE COUNTY, 18" MAX WIDTH	
				< 0.251 = +.004/-0.03		FINISH				SIZE DWG. NO.	
				0.251-0.500 = +.006/-0.03						D-365453	
				> 0.500 = +.008/-0.03						SCALE 1:12	
				ALL GEOMETRY COVERED BY 3D CAD DATABASE:						UOM = EA	
										SHEET 2 OF 4	

NOTES: (UNLESS OTHERWISE SPECIFIED)

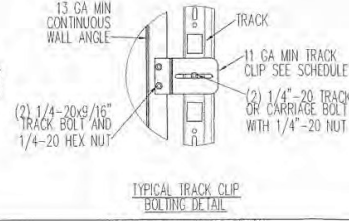
1 ONE 4" AND 3" STRUT PER SECTION, ATTACHED WITH 1/4-14X7/8" SELF DRILLING CRIMPITE SCREWS.



TYPICAL TRACK AND JAMB FASTENERS DETAIL

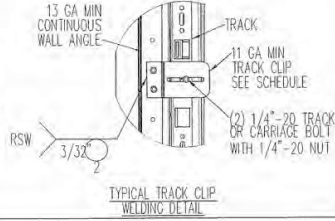


TYPICAL TRACK CLIP RIVETING DETAIL



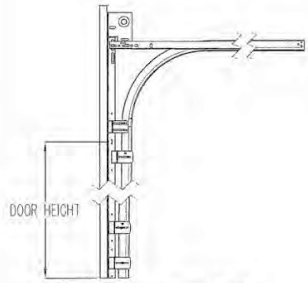
TYPICAL TRACK CLIP BOLTING DETAIL

OPTIONAL WALL ANGLE TRACK

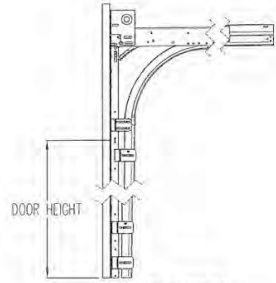


TYPICAL TRACK CLIP WELDING DETAIL

DETAIL M
SCALE 1:4

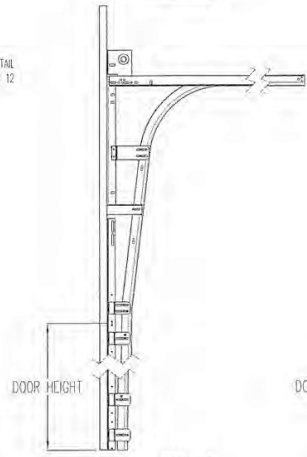


STANDARD LIFT TRACK DETAIL

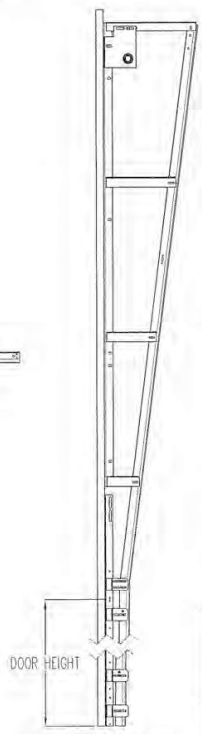


LOW HEADROOM TRACK DETAIL

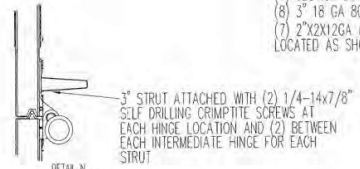
TRACK DETAIL
SCALE 1:12



HIGH LIFT TRACK DETAIL



VERTICAL LIFT TRACK DETAIL



DETAIL N
SCALE 1:4



DETAIL P
SCALE 1:4

3" STRUT ATTACHED WITH (2) 1/4-14X7/8" SELF DRILLING CRIMPITE SCREWS AT EACH HINGE LOCATION AND (2) BETWEEN EACH INTERMEDIATE HINGE FOR EACH STRUT

3" STRUT ATTACHED WITH (2) 1/4-14X7/8" SELF DRILLING CRIMPITE SCREWS AT EACH HINGE LOCATION AND (2) BETWEEN EACH INTERMEDIATE HINGE FOR EACH STRUT

ALL 2"x2"x12GA ANGLE SHALL BE ATTACHED WITH (2) 1/4-14X7/8" SELF DRILLING CRIMPITE SCREWS AT EACH HINGE LOCATION AND BETWEEN ALL END HINGES AND INTERMEDIATE HINGES.

PRODUCT REVISED
As complying with the Florida Building Code
NOA-No. **23-1120.17**
Expiration Date: **08/04/2027**
By: *Manuel Bern*
Miami-Dade Product Control

PRODUCT APPROVED
as complying with the Florida Building Code
NOA-No. **22-0315.06**
Approval Date **08/04/2022**

By *[Signature]*
Miami-Dade Product Control


- (12) SECTION DOORS WITH (24) 4" 16 GA 80 KSI U- BARS (23) 2"x2"x12GA ANGLES LOCATED AS SHOWN
- (11) SECTION DOORS WITH (22) 3" 18 GA 80 KSI U- BARS (21) 2"x2"x12GA ANGLES LOCATED AS SHOWN
- (10) SECTION DOORS WITH (20) 3" 18 GA 80 KSI U- BARS (19) 2"x2"x12GA ANGLES LOCATED AS SHOWN
- (9) SECTION DOORS WITH (18) 3" 18 GA 80 KSI U- BARS (17) 2"x2"x12GA ANGLES LOCATED AS SHOWN
- (8) SECTION DOORS WITH (16) 3" 18 GA 80 KSI U- BARS (15) 2"x2"x12GA ANGLES LOCATED AS SHOWN
- (7) SECTION DOORS WITH (14) 3" 18 GA 80 KSI U- BARS (13) 2"x2"x12GA ANGLES LOCATED AS SHOWN
- (6) SECTION DOORS WITH (12) 4" 16 GA 80 KSI U- BARS (11) 2"x2"x12GA ANGLES LOCATED AS SHOWN
- (5) SECTION DOORS WITH (10) 3" 18 GA 80 KSI U- BARS (9) 2"x2"x12GA ANGLES LOCATED AS SHOWN
- (4) SECTION DOORS WITH (8) 3" 18 GA 80 KSI U- BARS (7) 2"x2"x12GA ANGLES LOCATED AS SHOWN

STRUT LOCATIONS
SCALE 1:20

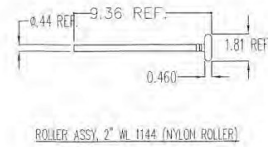
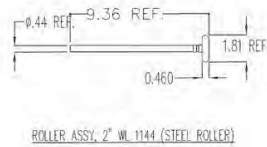
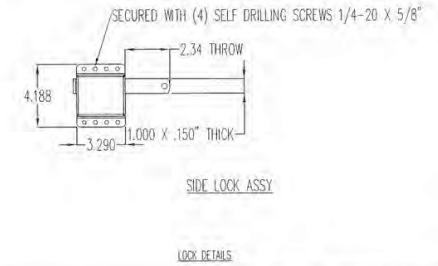
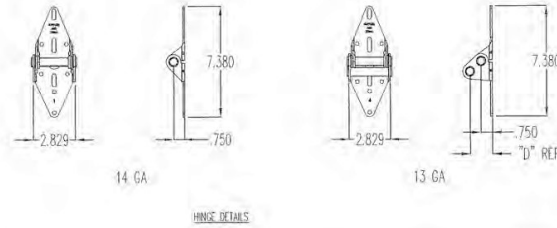
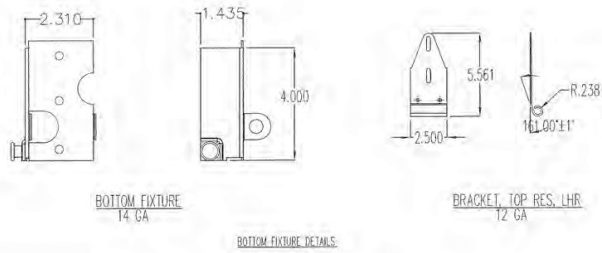
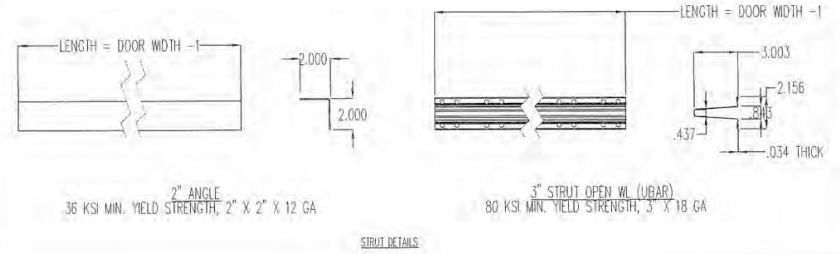
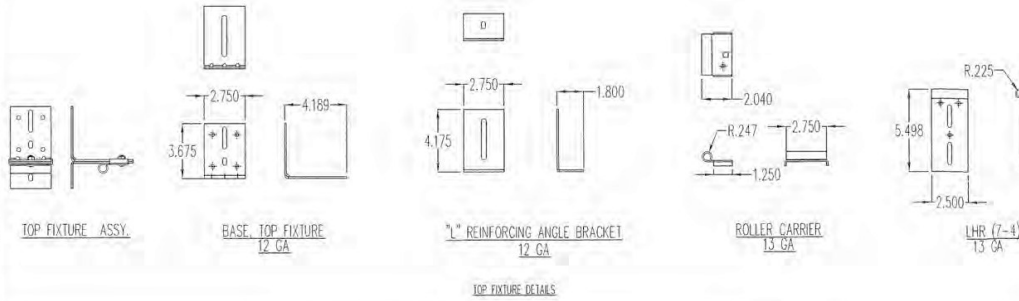


JUNFENG QIAN, PE
2501 S. STATE HWY 121, SUITE 200
LEWISVILLE, TEXAS
FL PE 87291 1X PE 130813

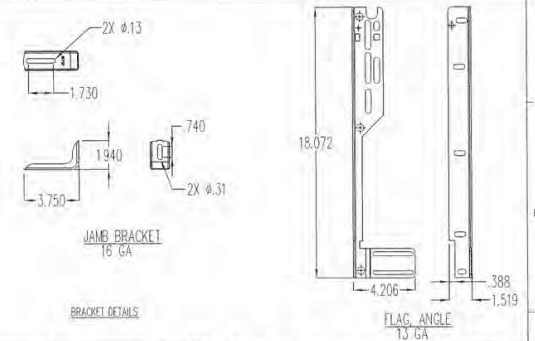
PROFESSIONAL ENGINEER'S SEAL PROVIDED ONLY FOR VERIFICATION OF WINDLOAD CONSTRUCTION DETAILS.

<div>THIRD ANGLE PROJECTION</div> <div></div>		UNLESS OTHERWISE SPECIFIED		APPROVALS		DATE	Wayne Dalton <small>WINDOOR DOORS</small>	PENSACOLA, FLORIDA	
		INTERPRET DIMS & TOLS PER ASME Y14.5M ALL DIMS ARE IN INCHES DO NOT SCALE		TOLERANCES: X = ±.1 XX = ±.03 XXX = ±.010 ANGULAR = ±.5° HOLES: < 0.251 = +.004/- .003 0.251-0.500 = +.006/- .003 > 0.500 = +.008/- .003 ALL GEOMETRY GOVERNED BY 3D CAD DATABASE:		DRAWN J. QIAN 10/28/21 CHECKED D. KORNISH 10/28/21 APPROVED MATERIAL			
A DIVISION OF OVERHEAD DOOR CORP. 3395 ADDISON DRIVE PENSACOLA, FLORIDA 32514 (850) 474-9890		DIM'S CIRCLED WITH SYMBOL ARE CRITICAL TO QUALITY DESIGN FEATURES & MUST MEET APPLICABLE IN-PROCESS INSPECTION STANDARDS.		FINISH		DESCRIPTION WINDLOAD MODELS 6600/8300/8350/8500/8600 /5150/5200, +43/-48 PSF, DADE COUNTY, 18.2" MAX WIDTH		SIZE DWG. NO. D D-365453	REV -
				SCALE 1:12		UOM = EA		SHEET 3 OF 4	

NOTES: (UNLESS OTHERWISE SPECIFIED)
1. FOR DIMENSIONS AND NOTE REFERENCES, REFER TO INDIVIDUAL DRAWINGS.



ROLLER STEM ASSY DETAILS



JUNFENG QIAN, PE
2501 S. STATE HWY 121, SUITE 200
LEWISVILLE, TEXAS
FL PE 87291 TX PE 130813

PROFESSIONAL ENGINEER'S SEAL PROVIDED ONLY FOR
VERIFICATION OF WINDLOAD CONSTRUCTION DETAILS.

PRODUCT APPROVED
as complying with the Florida
Building Code
NOA-No. 22-0315.06
Approval Date 08/04/2022
By *[Signature]*
Miami-Dade Product Control

PRODUCT REVISED
As complying with the Florida
Building Code
NOA-No. 23-1120.17
Expiration Date: 08/04/2027
By *[Signature]*
Miami-Dade Product Control

THIRD ANGLE PROJECTION		UNLESS OTHERWISE SPECIFIED		APPROVALS		DATE	Wayne Dalton PENSACOLA, FLORIDA
		INTERPRET DIMS & TOLS PER ASME Y14.5M ALL DIMS ARE IN INCHES DO NOT SCALE DIMS CIRCLED WITH SYMBOL ARE CRITICAL TO QUALITY DESIGN FEATURES & MUST MEET APPLICABLE IN-PROCESS INSPECTION STANDARDS.		DRAWN	J. QIAN		
A DIVISION OF OVERHEAD DOOR CORP. 3395 ADDISON DRIVE PENSACOLA, FLORIDA 32514 (850)-474-9890		TOLERANCES: .X = ±.1 .XX = ±.03 .XXX = ±.010 ANGULAR = ±.5° HOLES: < Ø.251 = +.004/- .003 Ø.251-Ø.500 = +.006/- .003 > Ø.500 = +.008/- .003 ALL GEOMETRY GOVERNED BY 3D CAD DATABASE		CHECKED	D. KORNISH	10/28/21	DESCRIPTION WINDLOAD MODELS 6600/8300/8350/8500/8600 /5150/5200, +43/-48 PSF, DADE COUNTY, 18" MAX WIDTH
				APPROVED	-	-	
				MATERIAL	-	-	SIZE DWG NO.
				FINISH	-	-	D-365453
						SCALE 1:12	UOM =
						SHEET 4 OF 4	