



**MIAMI-DADE COUNTY
PRODUCT CONTROL SECTION**

11805 SW 26 Street, Room 208
Miami, Florida 33175-2474
T (786) 315-2590 F (786) 315-2599

**DEPARTMENT OF REGULATORY AND ECONOMIC RESOURCES (RER)
BOARD AND CODE ADMINISTRATION DIVISION**

NOTICE OF ACCEPTANCE (NOA)

www.miamidade.gov/building

**Overhead Door Corporation
2501 South State Hwy. 121, Suite 200
Lewisville, Texas 75067**

SCOPE: This NOA is being issued under the applicable rules and regulations governing the use of construction materials. The documentation submitted has been reviewed and accepted by Miami-Dade County RER-Product Control Section to be used in Miami Dade County and other areas where allowed by the Authority Having Jurisdiction (AHJ). This NOA shall not be valid after the expiration date stated below. The Miami-Dade County Product Control Section (In Miami Dade County) and/or the AHJ (in areas other than Miami Dade County) reserve the right to have this product or material tested for quality assurance purposes. If this product or material fails to perform in the accepted manner, the manufacturer will incur the expense of such testing and the AHJ may immediately revoke, modify, or suspend the use of such product or material within their jurisdiction. RER reserves the right to revoke this acceptance, if it is determined by Miami-Dade County Product Control Section that this product or material fails to meet the requirements of the applicable building code.

This product is approved as described herein and has been designed to comply with the Florida Building Code, including the High Velocity Hurricane Zone.

DESCRIPTION: Series 1440, 1540, 170 and 180 Steel Sectional Garage Door up to 18ft.-2in. Wide w/ Optional EPS Insulation and Impact Resistant Glazing

APPROVAL DOCUMENT: Drawing No. **D-411619**, titled "1440/1540/173/174/183/184/176/186 18'2" Max. Width", sheets 1 through 4 of 4, dated 02/18/20, prepared by manufacturer, signed and sealed by Dwayne J. Kornish, P.E., bearing the Miami-Dade County Product Control Revision stamp with the Notice of Acceptance number and expiration date by the Miami-Dade County Product Control Section.

MISSILE IMPACT RATING: Large and Small Missile Impact Resistant

LABELING: Each unit shall bear a permanent label with the manufacturer's name or logo, manufacturing address, model number, the positive and negative design pressure rating, indicate impact rated if applicable, installation instruction drawing reference number, approval number (NOA), the applicable test standards, and the statement reading 'Miami-Dade County Product Control Approved' is to be located on the door's side track, bottom angle, or inner surface of a panel.

LIMITATION: This door has not been tested for air infiltration.

RENEWAL of this NOA shall be considered after a renewal application has been filed and there has been no change in the applicable building code negatively affecting the performance of this product.

TERMINATION of this NOA will occur after the expiration date or if there has been a revision or change in the materials, use, and/or manufacture of the product or process. Misuse of this NOA as an endorsement of any product, for sales, advertising or any other purposes shall automatically terminate this NOA. Failure to comply with any section of this NOA shall be cause for termination and removal of NOA.

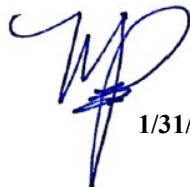
ADVERTISEMENT: The NOA number preceded by the words Miami-Dade County, Florida, and followed by the expiration date may be displayed in advertising literature. If any portion of the NOA is displayed, then it shall be done in its entirety.

INSPECTION: A copy of this entire NOA shall be provided to the user by the manufacturer or its distributors and shall be available for inspection at the job site at the request of the Building Official.

This NOA **revises NOA No. 20-0416.01** and consists of this page 1 and evidence pages E-1 and E-2, as well as approval document mentioned above.

The submitted documentation was reviewed by **Manuel Perez, P.E.**




1/31/24

NOA No. 23-1120.18
Expiration Date: December 17, 2025
Approval Date: February 08, 2024
Page 1

Overhead Door Corporation

NOTICE OF ACCEPTANCE: EVIDENCE SUBMITTED

1. EVIDENCE SUBMITTED UNDER PREVIOUS NOA's

A. DRAWINGS

1. Manufacturer's die drawings and sections.
(Submitted under NOA No. 20-0416.01)
2. Drawing No. **D-411619**, titled "1440/1540/173/174/183/184/176/186 18'-2" Max. Width", sheets 1 through 4 of 4, dated 02/18/20, prepared by manufacturer, signed and sealed by Dwayne J. Kornish, P.E.
(Submitted under NOA No. 20-0416.01)

B. TESTS

1. Test reports on: 1) Uniform Static Air Pressure Test, Loading per FBC, TAS 202-94
2) Large Missile Impact Test per FBC, TAS 201-94
3) Cyclic Wind Pressure Loading per FBC, TAS 203-94
4) Forced Entry Test, per FBC 2411 3.2.1, TAS 202-94
5) Tensile Test per ASTM E8
along with marked-up drawings and installation diagram of a sectional garage door, prepared by Intertek/Architectural Testing, Inc., Test Report No. **K3485.06-801-18R2**, dated 03/26/20, signed and sealed by Tyler Westerling, P.E.
(Submitted under NOA No. 20-0416.01)

C. CALCULATIONS

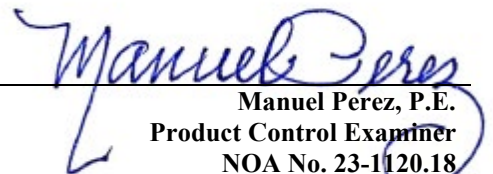
1. Anchor load calculations prepared by manufacturer, dated 03/09/20, signed and sealed by Dwayne J. Kornish, P.E.
(Submitted under NOA No. 20-0416.01)

D. QUALITY ASSURANCE

1. Miami-Dade Department of Regulatory and Economic Resources (RER)

E. MATERIAL CERTIFICATIONS

1. UL evaluation report on flame spread and smoke developed of STYROPEK EPS resins per ASTM E84, ANSI/UL723, prepared by UL, LLC, Evaluation Report No. **UL ER38219-01**, dated 04/08/15.
2. Test report on ignition temperature of Drew Foam Company EPS per ASTM D1929-16, prepared by Element Materials Technology, Test Report No. **19-06-P0083**, dated 06/24/19, signed by Rubaiyat Khondker.
3. Notice of Acceptance No. **18-0918.06** issued to **Plaskolite, LLC** for its **TUFFAK Polycarbonate Sheets**, approved on 11/15/18 and expiring on 08/27/22.


Manuel Pérez, P.E.
Product Control Examiner
NOA No. 23-1120.18
Expiration Date: December 17, 2025
Approval Date: February 08, 2024

Overhead Door Corporation

NOTICE OF ACCEPTANCE: EVIDENCE SUBMITTED

1. EVIDENCE SUBMITTED UNDER PREVIOUS NOA's (CONTINUED)

F. STATEMENTS

1. Statement letter of conformance, complying with **FBC 6th Edition (2017)** and with **FBC 7th Edition (2020)**, dated June 10, 2020, issued by manufacturer, signed and sealed by Dwayne J. Kornish, P.E.
2. Statement letter of no financial interest, dated March 06, 2020, issued by manufacturer, signed and sealed by Dwayne J. Kornish, P.E.

G. OTHERS

1. None.

2. NEW EVIDENCE SUBMITTED

A. DRAWINGS

1. None.

B. TESTS

1. None.

C. CALCULATIONS

1. None.

D. QUALITY ASSURANCE

1. Miami-Dade Department of Regulatory and Economic Resources (RER)

E. MATERIAL CERTIFICATIONS

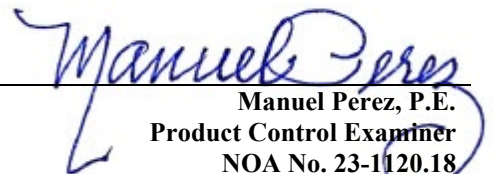
1. Notice of Acceptance No. **22-0317.02** issued to **Plaskolite, LLC** for their "**TUFFAK Polycarbonate Sheets**" dated 04/21/22 expiring on 08/27/27.

F. STATEMENTS

1. Statement letter of conformance, complying with **FBC 8th Edition (2023)** and of no financial interest, dated January 25, 2024, issued by manufacturer, signed and sealed by Dwayne J. Kornish, P.E.

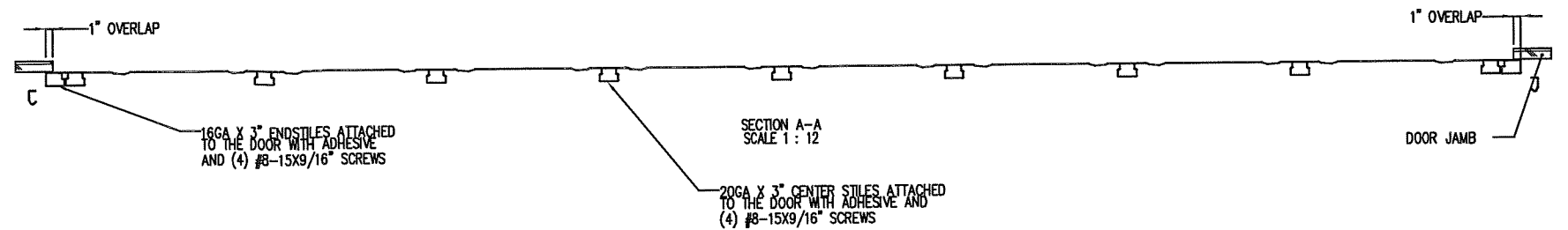
G. OTHERS

1. Notice of Acceptance No. **20-0416.01**, issued to Overhead Door Corporation, for their Series 1440, 1540, 170 and 180 Steel Sectional Garage Door up to 18'-2" Wide w/ Optional EPS Insulation and Impact Resistant Glazing, approved on 12/17/20 and expiring on 12/17/25.


Manuel Pérez, P.E.
Product Control Examiner
NOA No. 23-1120.18
Expiration Date: December 17, 2025
Approval Date: February 08, 2024

NOTES: (UNLESS OTHERWISE SPECIFIED)

1. RATED DESIGN LOAD +46/-52 PSF.
2. SECTION HEIGHTS MAY VARY TO CREATE VARIOUS DOOR HEIGHTS, 20.8" MAXIMUM SECTION HEIGHT.
3. MINIMUM 1" OVERLAP ON BOTH JAMBS REQUIRED TO MEET NEGATIVE DESIGN PRESSURES.
4. TESTED IN ACCORDANCE WITH DADE COUNTY PROTOCOLS TAS 201-94, TAS 202-94, & TAS 203-94.
5. DOOR SKIN MUST BE 33,000 PSI MIN. YIELD STRENGTH.
6. JAMB LOAD CALCULATIONS:
 $F_j = (1/2 \text{ DOOR WIDTH})(1 \text{ FT OF HEIGHT})(\text{DESIGN PRESSURE})$
 $F_j = (9.067)(1 \text{ FOOT})(46.00 \text{ AND } -52.00)(417.1/-471.5) \text{ LB.}$
7. JAMB FASTENER REQUIREMENTS:
 $F_j = (1/2 \text{ DOOR WIDTH})(1 \text{ FT OF HEIGHT})(\text{DESIGN PRESSURE})$
 $F_j = 417.1 \text{ LBS.}$
8. DOOR SKIN MATERIAL SHALL BE GALVANIZED ACCORDING TO ASTM A-525 TO G90 MIN, WITH BAKED-ON PRIMER, AND BAKED-ON POLYESTER PAINT TOP COAT.
9. FOR ANCHORING INTO WOOD, USE ONE 5/16" LAG SCREW PER JAMB BRACKET WITH 1-1/2" EMBEDMENT INTO SOUTHERN PINE (G=0.55) OR BETTER.
10. APPROVED INSULATED AND NON-INSULATED: 1440 (24GA), 1540 (24GA), 173 (24GA), 174 (24GA), 183 (24GA), 184 (24GA), 176 (24GA), 186 (24GA), 0.0209" MIN STEEL.
11. WELD SLOT ON ANGLE AND 3/32" X 1" LONG ON 12" CENTERS. "IF WELDING MOUNTING OPTION IS CHOSEN."
12. LIFT UP MECHANISM-MANUAL, CHAIN LIFT, OR OPERATOR IS NOT PART OF THIS APPROVAL.
13. STANDARD LIFT, HIGH LIFT, VERTICAL LIFT, AND LOW HEADROOM TRACK IS AVAILABLE. FOR LOW HEADROOM LIFT CONDITIONS TOP BRACKET SHALL BE 13 GA LHR 7/4 TOP BRACKET WITH A MIN OF (3) 1/4 - 14 X 7/8" SELF DRILLING CRIMPITTE SCREWS IN LIEU OF THE BRACKET SHOWN ON DRAWING. U-BAR ON TOP SECTION SHALL BE INSTALLED ON TOP OF LHR TOP BRACKETS.
14. ATTACH STRUTS WITH (2) 1/4-14x7/8" SELF DRILLING CRIMPITTE SCREWS AT ALL STILE LOCATIONS, TYP. LOCATED WITHIN 6" , +/- 3" FROM TOP AND BOTTOM OF SECTION.
15. KEY LOCK, SIDE LOCK, OR DRAWBAR OPERATOR REQUIRED.
16. IMPACT RESISTANT GLAZING OPTION- IMPACT RESISTANT GLAZING SYSTEM MAY BE INSTALLED INTERMEDIATE SECTION OR TOP SECTION. GLAZING SHALL BE 1/4" POLYCARBONATE. 13-3/4" X 20-1/8" MAXIMUM SIZE, FASTENED WITH # 8 X 1" SMS: 3X MIN ALONG THE HORIZONTAL AND 2X MIN ALONG THE VERTICAL. SEE DETAIL F-F ON SHEET 2 FOR ASSEMBLY DETAILS.
17. THE DESIGN OF THE SUPPORTING STRUCTURAL ELEMENTS SHALL BE THE RESPONSIBILITY OF THE PROFESSIONAL OF RECORD FOR THE BUILDING OR STRUCTURE AND IN ACCORDANCE WITH CURRENT BUILDING CODES FOR THE LOADS LISTED ON THIS DRAWING.
18. VENTS PROVIDE 60 SQUARE INCHES PER VEHICLE.



PRODUCT REVISED
As complying with the Florida
Building Code

NOA-No. **23-1120.18**

Expiration Date: **12/17/2025**

By: *Manuel Perez*

Miami-Dade Product Control

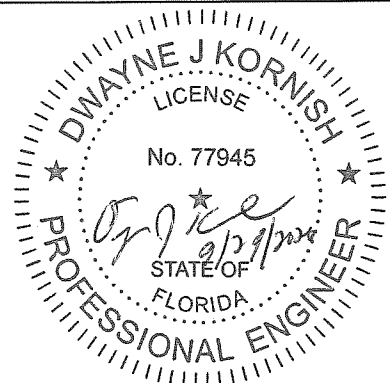
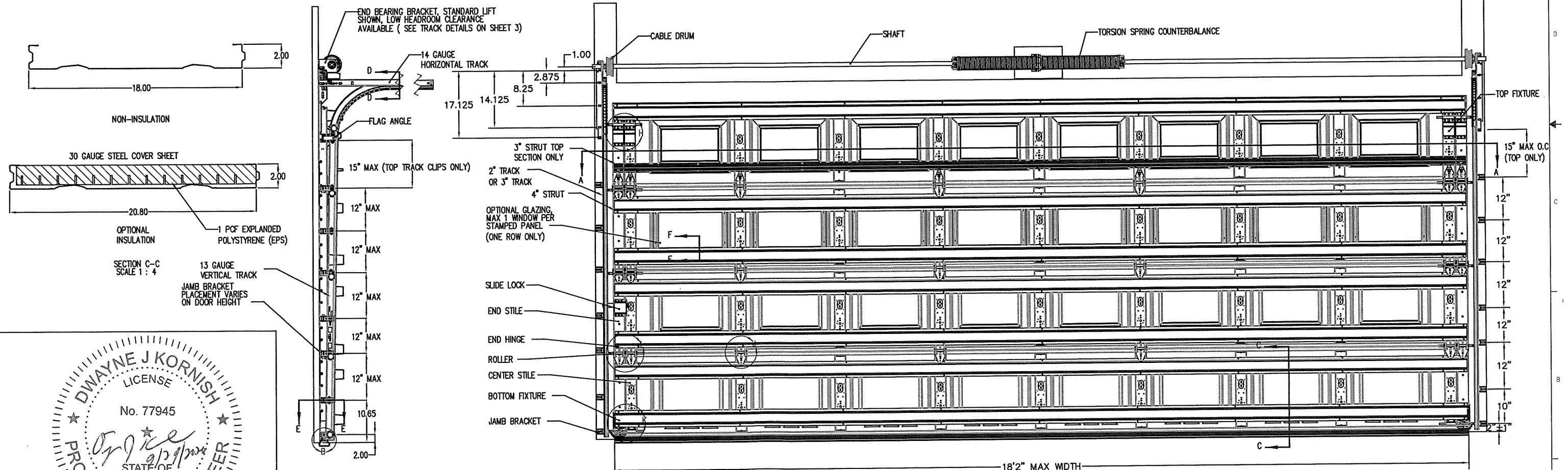
PRODUCT APPROVED
as complying with the Florida
Building Code

NOA-No. 20-0416.01

Approval Date 12/17/2020

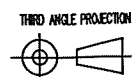
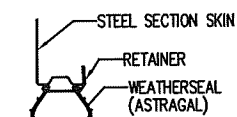
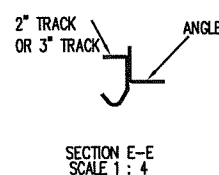
By: *R. P. Hines*

Miami-Dade Product Control



DWAYNE J. KORNISH, PE
4576 COUNTY ROAD 160
MOUNT HOPE, OHIO
FL PE 77945 TX PE 117868

PROFESSIONAL ENGINEER'S SEAL PROVIDED ONLY FOR
VERIFICATION OF WINDLOAD CONSTRUCTION DETAILS.



INTERPRET DIMS & TOLS
PER ASME Y14.5M
ALL DIMS ARE IN
INCHES
DO NOT SCALE

DIMS CIRCLED WITH SYMBOL
ARE CRITICAL TO QUALITY DESIGN
FEATURES & MUST MEET APPLICABLE
IN-PROCESS INSPECTION STANDARDS.

UNLESS OTHERWISE SPECIFIED

TOLERANCES:
.X = ±.1
.XX = ±.03
.XXX = ±.010
ANGULAR = ±.5°

HOLES:
< 0.251 = ±.004/- .003
0.251-0.500 = ±.006/- .003
> 0.500 = ±.008/- .003

ALL GEOMETRY GOVERNED BY 3D CAD DATABASE:

APPROVALS DATE

DRAWN G. CLARK 4-11-19

CHECKED D. KORNISH 2-18-20

APPROVED -

MATERIAL -

FINISH -

WINDLOAD SPECIFICATION
OPTION CODE 1146

The Genuine. The Original.

OVERHEAD DOOR

DESCRIPTION

1440/1540/173/174/183/184/

176/186 18'2" MAX WIDTH

SIZE DWG NO.

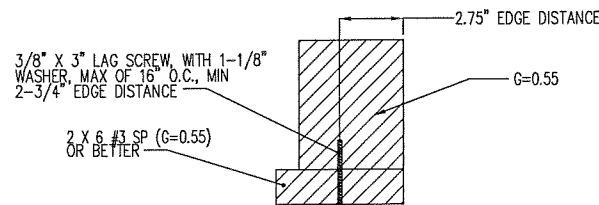
D-411619

REV P-00

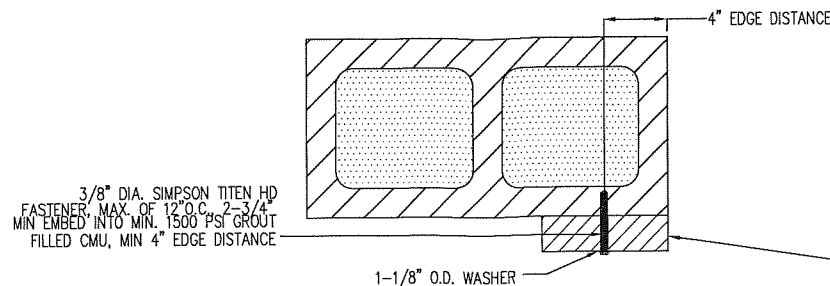
SCALE 1:12 UOM = EA SHEET 1 OF 4

2501 S. TX-121 BUS
LEWISVILLE, TEXAS

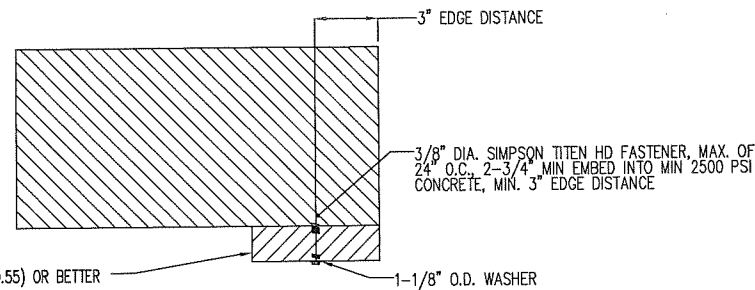
NOTES: (UNLESS OTHERWISE SPECIFIED)



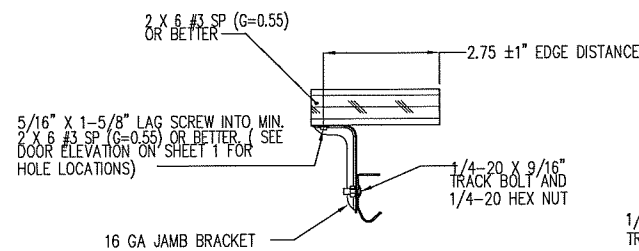
WOOD MOUNTED TO #3 SOUTHERN PINE SUBSTRATE



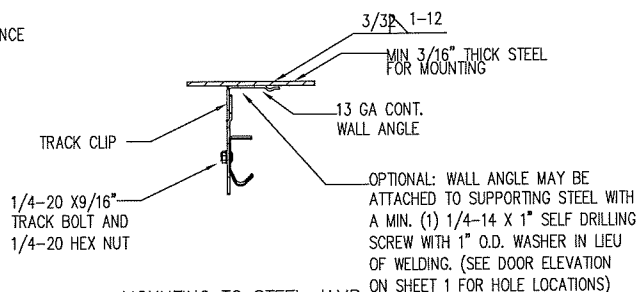
WOOD MOUNTED TO GROUT FILLED MASONRY BLOCK DETAIL



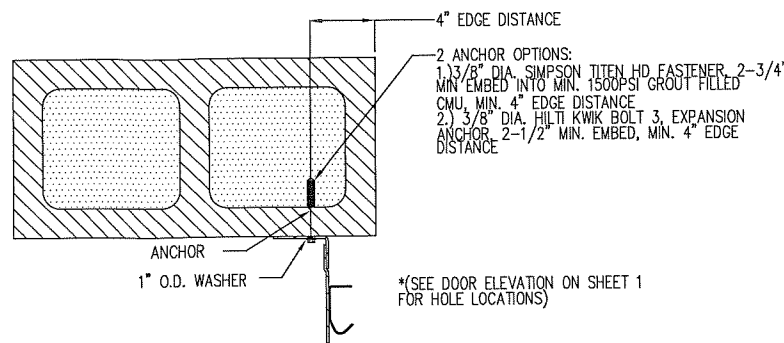
WOOD MOUNTED TO 2500PSI CONCRETE DETAIL



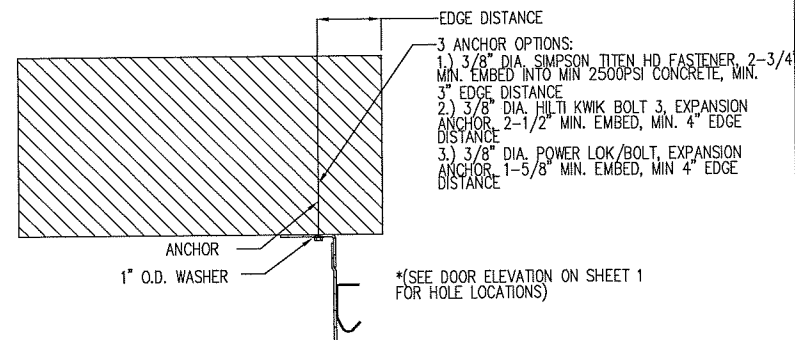
MOUNTING TO WOOD JAMB DETAIL



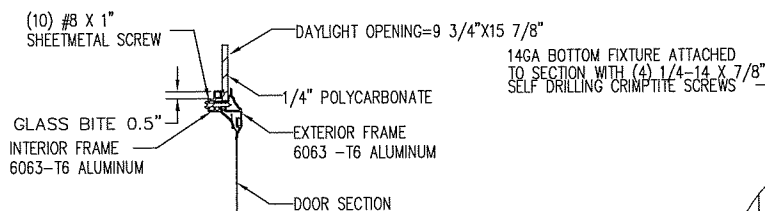
MOUNTING TO STEEL JAMB DETAIL



MOUNTING TO GROUT FILLED MASONRY BLOCK DETAIL

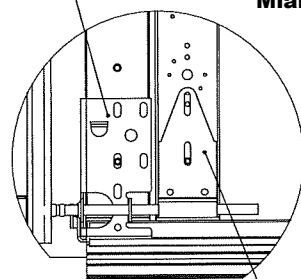


MOUNTING TO 2500PSI CONCRETE DETAIL

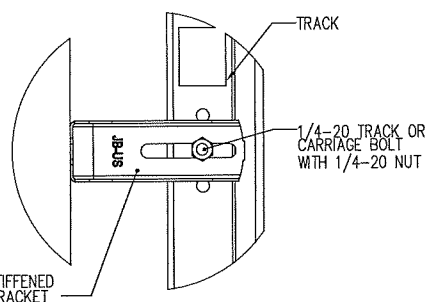


WINDOW DETAIL
SECTION F-F
SCALE 1:4

PRODUCT REVISED
As complying with the Florida
Building Code
NOA-No. **23-1120.18**
Expiration Date: **12/17/2025**
By: *Manuel Perez*
Miami-Dade Product Control

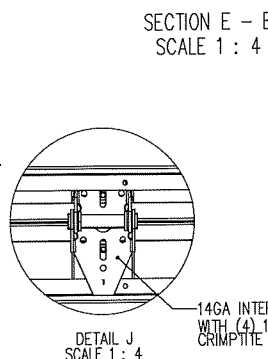


DETAIL K
SCALE 1:4

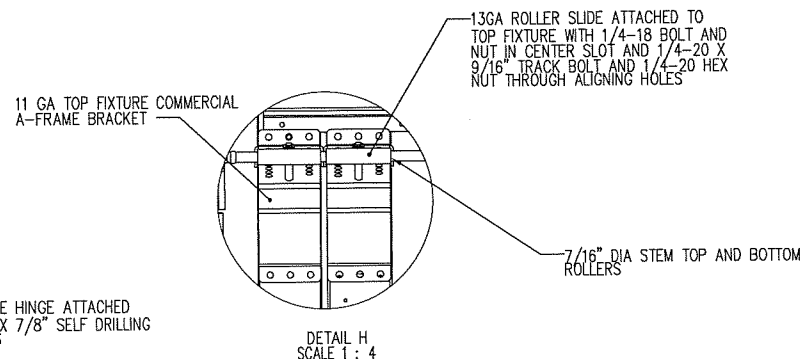


TYPICAL TRACK AND JAMB FASTENERS DETAIL

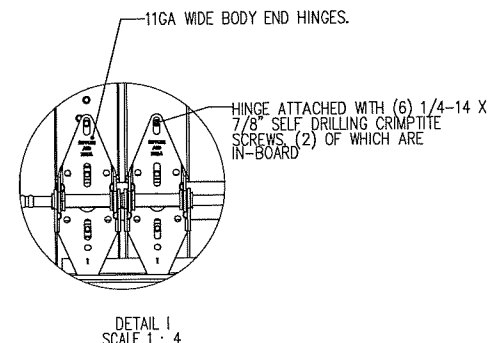
PRODUCT APPROVED
as complying with the Florida
Building Code
NOA-No. **20-0416.01**
Approval Date **12/17/2020**
By: *[Signature]*
Miami-Dade Product Control



DETAIL J
SCALE 1:4

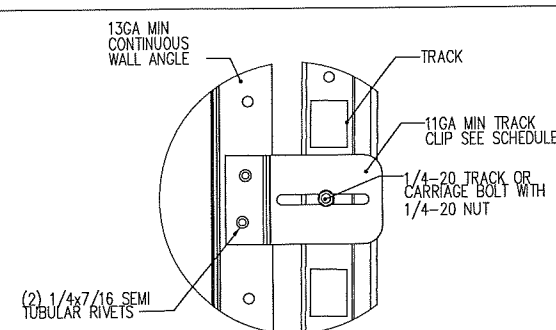


DETAIL H
SCALE 1:4

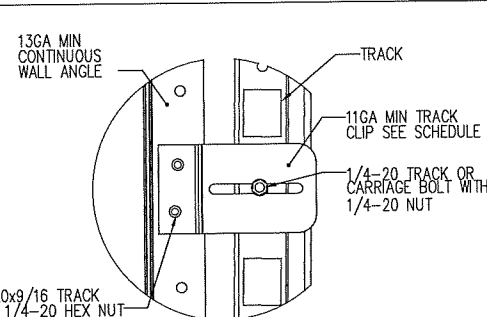


DETAIL I
SCALE 1:4

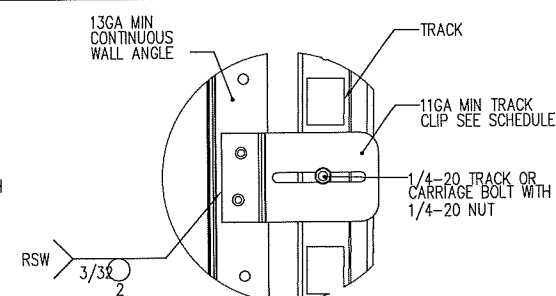
OPTIONAL WALL ANGLE TRACK



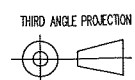
TYPICAL TRACK CLIP RIVETING DETAIL



TYPICAL TRACK CLIP BOLTING DETAIL



TYPICAL TRACK CLIP WELDING DETAIL

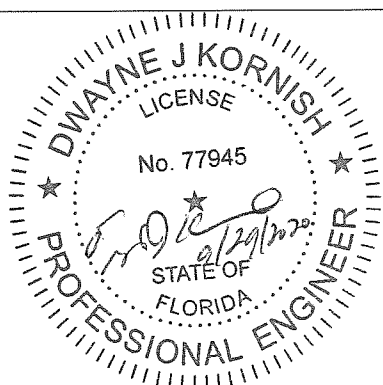


INTERPRET DIMS & TOLS
PER ASME Y14.5M
ALL DIMS ARE IN
INCHES
DO NOT SCALE
DIMS CIRCLED WITH SYMBOL
ARE CRITICAL TO QUALITY DESIGN
FEATURES & MUST MEET APPLICABLE
IN-PROCESS INSPECTION STANDARDS.

UNLESS OTHERWISE SPECIFIED
TOLERANCES:
.X = ±.1
.XX = ±.03
.XXX = ±.010
ANGULAR = ±.5°
HOLES:
< Ø.251 = +.004/-0.003
Ø.251-Ø.500 = +.006/-0.003
> Ø.500 = +.008/-0.003
ALL GEOMETRY GOVERNED BY 3D CAD DATABASE:

APPROVALS DATE
DRAWN G. CLARK 4-11-19
CHECKED D. KORNISH 2-18-20
APPROVED - -
MATERIAL - -
FINISH - -
WINDLOAD SPECIFICATION
OPTION CODE 1146

The Genuine. The Original. 2501 S, TX-121 BUS LEWISVILLE, TEXAS
DESCRIPTION
1440/1540/173/174/183/184/
176/186 18'2" MAX WIDTH
SIZE DWG NO.
D D-411619
REV
P-00
SCALE 1:12 UOM = EA SHEET 2 OF 4

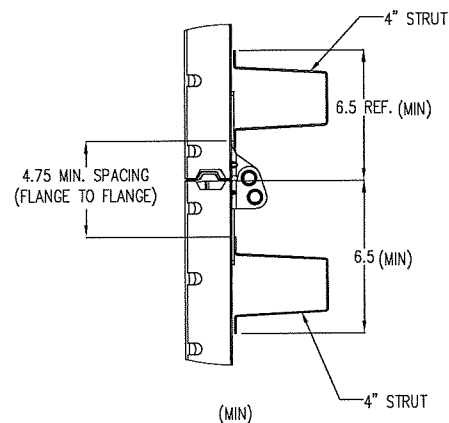
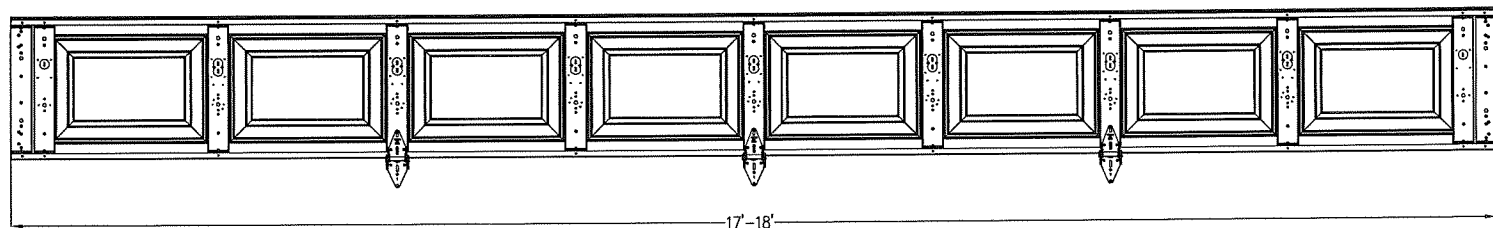


DWAYNE J. KORNISH, PE
4576 COUNTY ROAD 160
MOUNT HOPE, OHIO
FL PE 77945 TX PE 117868

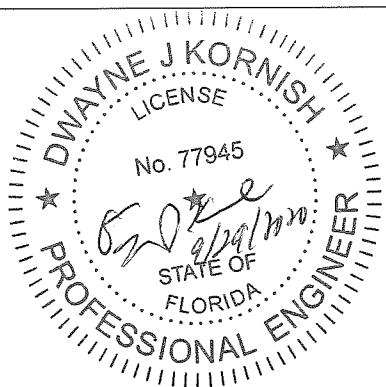
PROFESSIONAL ENGINEER'S SEAL PROVIDED ONLY FOR
VERIFICATION OF WINDLOAD CONSTRUCTION DETAILS.

NOTES: (UNLESS OTHERWISE SPECIFIED)

CENTER STILE AND INTERMEDIATE HINGE LOCATIONS

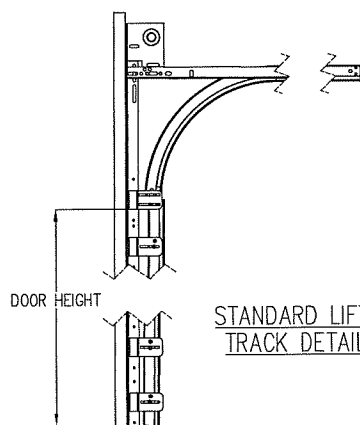


PRODUCT REVISED
As complying with the Florida
Building Code
NOA-No. **23-1120.18**
Expiration Date: **12/17/2025**
By: *Manuel Perez*
Miami-Dade Product Control

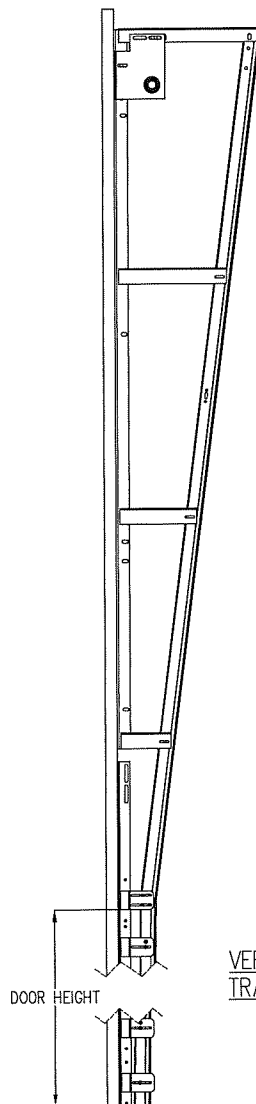


DWAYNE J. KORNISH, PE
4576 COUNTY ROAD 160
MOUNT HOPE, OHIO
FL PE 77945 TX PE 117868

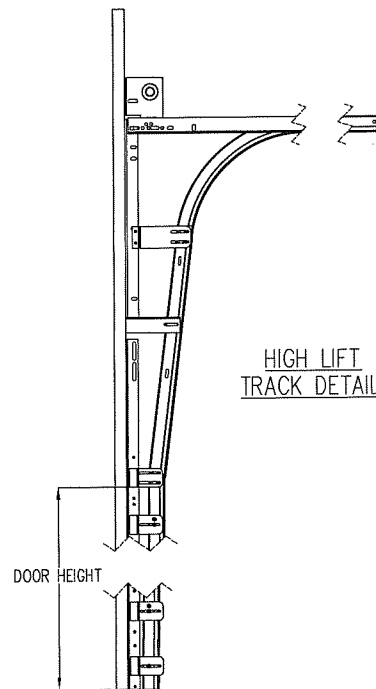
PROFESSIONAL ENGINEER'S SEAL PROVIDED ONLY FOR
VERIFICATION OF WINDLOAD CONSTRUCTION DETAILS.



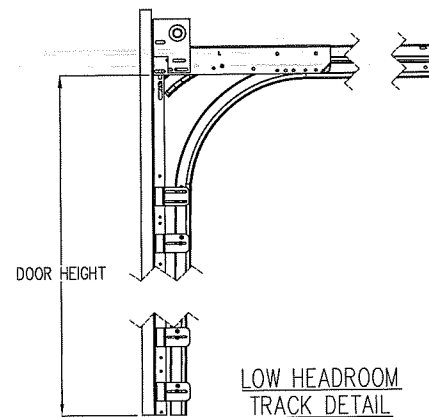
STANDARD LIFT
TRACK DETAIL



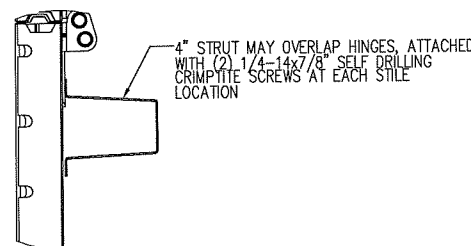
VERTICAL LIFT
TRACK DETAIL



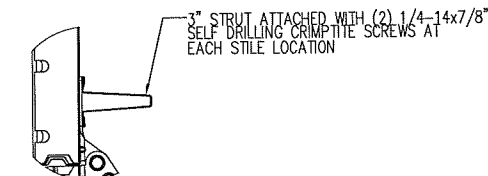
HIGH LIFT
TRACK DETAIL



LOW HEADROOM
TRACK DETAIL



DETAIL N
SCALE 1 : 4



DETAIL O
SCALE 1 : 4

(5) SECTION DOORS WITH
(9) 4" 16GA 80 KSI U-BARS
(1) 3" 18GA 80 KSI U-BARS
LOCATED AS SHOWN

(4) SECTION DOORS WITH
(7) 4" 16GA 80 KSI U-BARS
(1) 3" 18GA 80 KSI U-BARS
LOCATED AS SHOWN

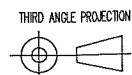
(6) SECTION DOORS WITH
(11) 4" 16GA 80 KSI U-BARS
(1) 3" 18GA 80 KSI U-BARS
LOCATED AS SHOWN

(7) SECTION DOORS WITH
(13) 4" 16GA 80 KSI U-BARS
(1) 3" 18GA 80 KSI U-BARS
LOCATED AS SHOWN

(8) SECTION DOORS WITH
(15) 4" 16GA 80 KSI U-BARS
(1) 3" 18GA 80 KSI U-BARS
LOCATED AS SHOWN

STRUT LOCATIONS
SCALE 1 : 16

PRODUCT APPROVED
as complying with the Florida
Building Code
NOA-No. **20-0416.01**
Approval Date **12/17/2020**
By *R. J. Kornish*
Miami-Dade Product Control



INTERPRET DIMS & TOLS
PER ASME Y14.5M
ALL DIMS ARE IN
INCHES
DO NOT SCALE

DIMS CIRCLED WITH SYMBOL
ARE CRITICAL TO QUALITY DESIGN
FEATURES & MUST MEET APPLICABLE
IN-PROCESS INSPECTION STANDARDS.

UNLESS OTHERWISE SPECIFIED

TOLERANCES:
.X = $\pm .1$
.XX = $\pm .03$
.XXX = $\pm .010$
ANGULAR = $\pm .5^\circ$

HOLES:
< 0.251 = $\pm .004/- .003$
0.251-0.500 = $\pm .006/- .003$
> 0.500 = $\pm .008/- .003$

ALL GEOMETRY GOVERNED BY 3D CAD DATABASE:

APPROVALS DATE

DRAWN G. CLARK 4-11-19
CHECKED D. KORNISH 2-18-20
APPROVED
MATERIAL
FINISH

WINDLOAD SPECIFICATION
OPTION CODE 1146

The Genuine. The Original.

OVERHEAD DOOR

DESCRIPTION

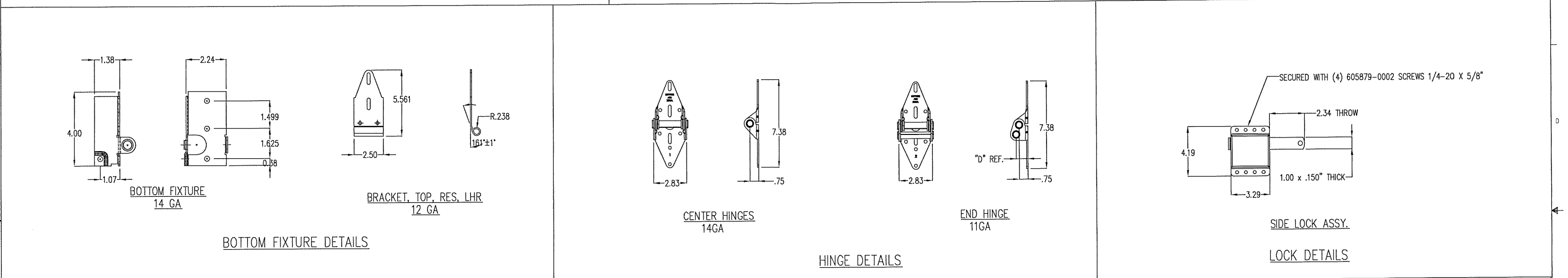
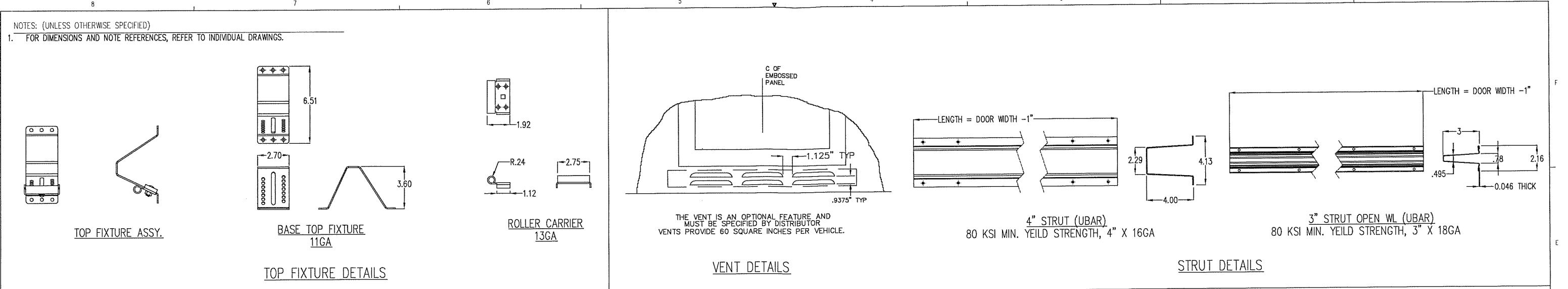
1440/1540/173/174/183/184/
176/186 18'2" MAX WIDTH

SIZE DWG NO.
D D-411619

SCALE 1:12

UOM = EA

SHEET 3 OF 4



PRODUCT APPROVED
as complying with the Florida Building Code
NOA-No. 20-0416.01
Approval Date 12/17/2020
By *[Signature]*
Miami-Dade Product Control

PRODUCT REVISED
As complying with the Florida Building Code
NOA-No. 23-1120.18
Expiration Date: 12/17/2025
By: *[Signature]*
Miami-Dade Product Control

ROLLER STEM ASSY DETAILS (WITH PUSH NUTS)

- ROLLER ASSY, 2" WL 1144 (STEEL ROLLER)
- ROLLER ASSY, 3" WL 1144
- ROLLER ASSY, 2" WL 1144 (NYLON ROLLER)

BRACKET DETAILS

- JAMB BRACKET 16GA
- FLAG ANGLE 13GA

PROFESSIONAL ENGINEER'S SEAL PROVIDED ONLY FOR VERIFICATION OF WINDLOAD CONSTRUCTION DETAILS.

DWAYNE J. KORNISH, PE
4576 COUNTY ROAD 160
MOUNT HOPE, OHIO
FL PE 77945 TX PE 117868

UNLESS OTHERWISE SPECIFIED		APPROVALS		DATE	
INTERPRET DIMS & TOLS PER ASME Y14.5M		DRAWN	G. CLARK	4-11-19	
ALL DIMS ARE IN INCHES		CHECKED	D. KORNISH	2-18-20	
DO NOT SCALE		APPROVED	-	-	
DIM'S CIRCLED WITH SYMBOL ARE CRITICAL TO QUALITY DESIGN		MATERIAL	-	-	
FEATURES & MUST MEET APPLICABLE IN-PROCESS INSPECTION STANDARDS.		FINISH	-	-	
TOLERANCES:		WINDLOAD SPECIFICATION			
.X = ±.1		OPTION CODE 1146			
.XX = ±.03					
.XXX = ±.010					
ANGULAR = ±.5°					
HOLES:					
< Ø.251 = +.004/- .003					
Ø.251-Ø.500 = +.006/- .003					
> Ø.500 = +.008/- .003					
ALL GEOMETRY GOVERNED BY 3D CAD DATABASE:					

The Genuine. The Original.		2501 S, TX-121 BUS LEWISVILLE, TEXAS	
DESCRIPTION		1440/1540/173/174/183/184/176/186 18'2" MAX WIDTH	
SIZE	DWG NO.	REV	
D	D-411619	P-00	
SCALE 1:12	UOM = EA	SHEET 4 OF 4	