



DEPARTMENT OF REGULATORY AND ECONOMIC RESOURCES (RER)  
BOARD AND CODE ADMINISTRATION DIVISION

## NOTICE OF ACCEPTANCE (NOA)

MIAMI-DADE COUNTY  
PRODUCT CONTROL SECTION

11805 SW 26 Street, Room 208  
Miami, Florida 33175-2474  
T (786) 315-2590 F (786) 315-2599

[www.miamidade.gov/building](http://www.miamidade.gov/building)

**Overhead Door Corporation**  
**2501 South State Hwy. 121, Suite 200**  
**Lewisville, Texas 75067**

**SCOPE:** This NOA is being issued under the applicable rules and regulations governing the use of construction materials. The documentation submitted has been reviewed and accepted by Miami-Dade County RER-Product Control Section to be used in Miami Dade County and other areas where allowed by the Authority Having Jurisdiction (AHJ). This NOA shall not be valid after the expiration date stated below. The Miami-Dade County Product Control Section (In Miami Dade County) and/or the AHJ (in areas other than Miami Dade County) reserve the right to have this product or material tested for quality assurance purposes. If this product or material fails to perform in the accepted manner, the manufacturer will incur the expense of such testing and the AHJ may immediately revoke, modify, or suspend the use of such product or material within their jurisdiction. RER reserves the right to revoke this acceptance, if it is determined by Miami-Dade County Product Control Section that this product or material fails to meet the requirements of the applicable building code.

This product is approved as described herein and has been designed to comply with the Florida Building Code, including the High Velocity Hurricane Zone.

**DESCRIPTION: Models 5745, 5765, 7565, 515 and 525 Insulated Steel Sectional Garage Door up to 9ft.-2in. Wide w/ Optional Impact Resistant Glazing (DP +46.0, -52.0 PSF)**

**APPROVAL DOCUMENT:** Drawing No. **D-411342**, titled "Windload Models 5745 / 5765 / 7565 / 515 / 525", sheets 1 through 4 of 4, dated 06/20/14, with revision B dated 03/14/18, prepared by manufacturer, signed and sealed by Dwayne J. Kornish, P.E., bearing the Miami-Dade County Product Control Revision stamp with the NOA number and expiration date by the Miami-Dade County Product Control Section.

**MISSILE IMPACT RATING: Large and Small Missile Impact Resistant**

**LABELING:** Each unit shall bear a permanent label with the manufacturer's name or logo, manufacturing address, model number, the positive and negative design pressure rating, indicate impact rated if applicable, installation instruction drawing reference number, approval number (NOA), the applicable test standards, and the statement reading 'Miami-Dade County Product Control Approved' is to be located on the door's side track, bottom angle, or inner surface of a panel.

**LIMITATION: This door has not been tested for air infiltration.**

**RENEWAL** of this NOA shall be considered after a renewal application has been filed and there has been no change in the applicable building code negatively affecting the performance of this product.

**TERMINATION** of this NOA will occur after the expiration date or if there has been a revision or change in the materials, use, and/or manufacture of the product or process. Misuse of this NOA as an endorsement of any product, for sales, advertising or any other purposes shall automatically terminate this NOA. Failure to comply with any section of this NOA shall be cause for termination and removal of NOA.

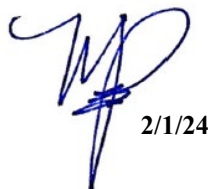
**ADVERTISEMENT:** The NOA number preceded by the words Miami-Dade County, Florida, and followed by the expiration date may be displayed in advertising literature. If any portion of the NOA is displayed, then it shall be done in its entirety.

**INSPECTION:** A copy of this entire NOA shall be provided to the user by the manufacturer or its distributors and shall be available for inspection at the job site at the request of the Building Official.

This NOA **revises NOA No. 20-1106.12** and consists of this page 1 and evidence pages E-1, E-2 and E-3, as well as approval document mentioned above.

The submitted documentation was reviewed by **Manuel Perez, P.E.**



  
2/1/24

NOA No. 23-1120.23  
Expiration Date: December 04, 2024  
Approval Date: February 08, 2024  
Page 1

**Overhead Door Corporation**

**NOTICE OF ACCEPTANCE: EVIDENCE SUBMITTED**

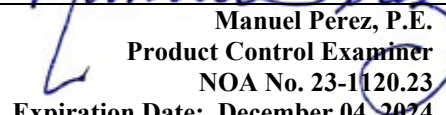
**1. EVIDENCE SUBMITTED UNDER PREVIOUS NOA's**

**A. DRAWINGS**

1. Manufacturer's die drawings and sections.  
*(Submitted under NOA No. 15-1228.10)*
2. Drawing No. **D-411342**, titled "Windload Models 5745 / 5765 / 7565 / 515 / 525", sheets 1 through 4 of 4, dated 06/20/14, prepared by manufacturer, signed and sealed by Dwayne J. Kornish, P.E.  
*(Submitted under NOA No. 19-1015.04)*

**B. TESTS**

1. Test reports on: 1) Uniform Static Air Pressure Test, Loading per FBC, TAS 202-94  
2) Large Missile Impact Test per FBC, TAS 201-94  
3) Cyclic Wind Pressure Loading per FBC, TAS 203-94  
4) Forced Entry Test, per FBC, TAS 202-94  
5) Tensile Test per ASTM E8  
along with marked-up drawings and installation diagram of a series 8300, option code 2206, 9'-2" x 8' sectional garage door (issued to Overhead Door Corporation), prepared by Architectural Testing, Inc., Test Report No. **C9366.01-801-18**, dated 10/02/13, with revision 1 dated 02/24/14, signed and sealed by Shawn G. Collins, P.E.  
*(Submitted under NOA No. 14-0204.08)*
2. Addendum letter to Architectural Testing's Test Report No. **C9366.01-801-18**, dated 07/07/14, signed and sealed by Vinu J. Abraham, P.E.  
*(Submitted under NOA No. 14-0204.08)*
3. Test reports on: 1) Uniform Static Air Pressure Test, Loading per FBC, TAS 202-94  
2) Large Missile Impact Test per FBC, TAS 201-94  
3) Cyclic Wind Pressure Loading per FBC, TAS 203-94  
4) Forced Entry Test, per FBC, TAS 202-94  
5) Tensile Test per ASTM E8  
along with marked-up drawings and installation diagram of Series 8300, option code 2206, 9'-2" x 8', sectional garage door (issued to Wayne Dalton), prepared by Architectural Testing, Inc., Test Report No. **C9366.01-801-18**, dated 10/02/13, signed and sealed by Vinu J. Abraham, P.E.  
*(Submitted under NOA No. 14-0204.08)*
4. Test report on Salt Fog Spray per ASTM B117 prepared by Environmental Testing Laboratory, Inc., Test Report No. **12732**, dated 06/22/13, signed by Brady Richard.  
*(Submitted under NOA No. 14-0204.08)*

  
Manuel Pérez, P.E.  
Product Control Examiner  
NOA No. 23-1120.23  
Expiration Date: December 04, 2024  
Approval Date: February 08, 2024

**Overhead Door Corporation**

**NOTICE OF ACCEPTANCE: EVIDENCE SUBMITTED**

**1. EVIDENCE SUBMITTED UNDER PREVIOUS NOA's (CONTINUED)**

**C. CALCULATIONS**

1. Structural and anchor calculations prepared by manufacturer, dated 01/28/14 and 06/26/14, signed and sealed by Mark A. Sawicki, P.E.  
*(Submitted under NOA No. 14-0204.08)*

**D. QUALITY ASSURANCE**

1. Miami-Dade Department of Regulatory and Economic Resources (RER)

**E. MATERIAL CERTIFICATIONS**


1. Test report on Surface Burning Characteristics of Building Materials per ASTM E84-18b on BASF Corp. Elastopor P19670R polyurethane foam insulation, prepared by QAI Laboratories, Inc., Test Report No. **RJ6648F-4**, dated 12/12/18, signed by Bryan Ortega.
2. Test report on flame spread and smoke developed of BASF polyurethane foam per ASTM E84, Test Report No. **RJ7233F-1**, dated 10/14/19, prepared by QAI Laboratories, Inc. and signed by Brian Ortega.
3. Test report on ignition temperature of BASF polyurethane foam per ASTM D1929, Test Report No. **10399361SAT-4**, dated 10/14/19, prepared by Intertek Building & Construction (B & C), signed by Servando Romo.
4. Notice of Acceptance No. **18-0918.06** issued to **Plaskolite, LLC** for its **TUFFAK Polycarbonate Sheets**, approved on 11/15/18 and expiring on 08/27/22.

**F. STATEMENTS**

1. Statement letter of conformance, complying with **FBC 7<sup>th</sup> Edition (2020)**, dated November 03, 2020, issued by manufacturer, signed and sealed by Dwayne J. Kornish, P.E.  
*(Submitted under NOA No. 20-1106.12)*
2. Statement letter of no financial interest, dated January 23, 2014, issued by manufacturer, signed and sealed by Mark A. Sawicki, P.E.  
*(Submitted under NOA No. 14-0204.08)*

**G. OTHERS**

1. Notice of Acceptance No. **19-1015.04**, issued to Overhead Door Corporation, for their Models 5745 / 5765 / 7565 / 515 / 525 Insulated Steel Sectional Garage Door up to 9'-2" Wide with Optional Impact Resistant Glazing (DP +46.0, -52.0), approved on 10/31/19 and expiring on 12/04/24.

  
Manuel Pérez, P.E.  
Product Control Examiner  
NOA No. 23-1120.23  
Expiration Date: December 04, 2024  
Approval Date: February 08, 2024

**Overhead Door Corporation**

**NOTICE OF ACCEPTANCE: EVIDENCE SUBMITTED**

**2. NEW EVIDENCE SUBMITTED**

**A. DRAWINGS**

1. None.

**B. TESTS**

1. None.

**C. CALCULATIONS**

1. None.

**D. QUALITY ASSURANCE**

1. Miami-Dade Department of Regulatory and Economic Resources (RER)

**E. MATERIAL CERTIFICATIONS**


1. Notice of Acceptance No. **22-0317.02** issued to **Plaskolite, LLC** for their “**TUFFAK Polycarbonate Sheets**” dated 04/21/22 expiring on 08/27/27.

**F. STATEMENTS**

1. Statement letter of conformance, complying with **FBC 8<sup>th</sup> Edition (2023)** and of no financial interest, dated January 25, 2024, issued by manufacturer, signed and sealed by Dwayne J. Kornish, P.E.

**G. OTHERS**

1. Notice of Acceptance No. **20-1106.12**, issued to Overhead Door Corporation, for their Models 5745 / 5765 / 7565 / 515 / 525 Insulated Steel Sectional Garage Door up to 9ft.-2in. Wide with Optional Impact Resistant Glazing (DP +46.0, -52.0), approved on 02/04/21 and expiring on 12/04/24.

  
Manuel Perez, P.E.  
Product Control Examiner  
NOA No. 23-1120.23  
Expiration Date: December 04, 2024  
Approval Date: February 08, 2024



# NOTES:

1. IMPACT RESISTANT GLAZING OPTION — IMPACT RESISTANT GLAZING SYSTEM MAY BE INSTALLED IN TOP OR INTERMEDIATE SECTION (WITH OR WITHOUT DECORATIVE INSERTS). GLAZING SHALL BE 1/4" POLYCARBONATE. MAXIMUM GLAZING DIMENSIONS SHALL BE 14" x 46" CUTOUT, FASTENED WITH A MINIMUM #8 X 1" SWS: 3X ALONG THE HORIZONTAL AND 3X ALONG THE VERTICAL. THE MINIMUM BITE SHALL BE .375". SEE DETAIL E ON SHEET 3 FOR ASSEMBLY DETAILS.

2. VINYL OR WOOD DOOR STOP NAILED A MAXIMUM OF 6" O.C. MUST OVERLAP TOP AND BOTH ENDS OF PANELS MINIMUM 7/16" TO MEET NEGATIVE PRESSURES.

3. KEY LOCKS, SLIDE LOCKS, OR OPERATOR REQUIRED.

4. LOUVER OPTION — LOUVERS MAY BE INSTALLED IN DOOR IF THE AREA OF EACH LOUVER DOES NOT EXCEED 60 IN<sup>2</sup>. DOOR VENTS LARGER THAN 60 IN<sup>2</sup> MUST BE TESTED FOR IMPACT.

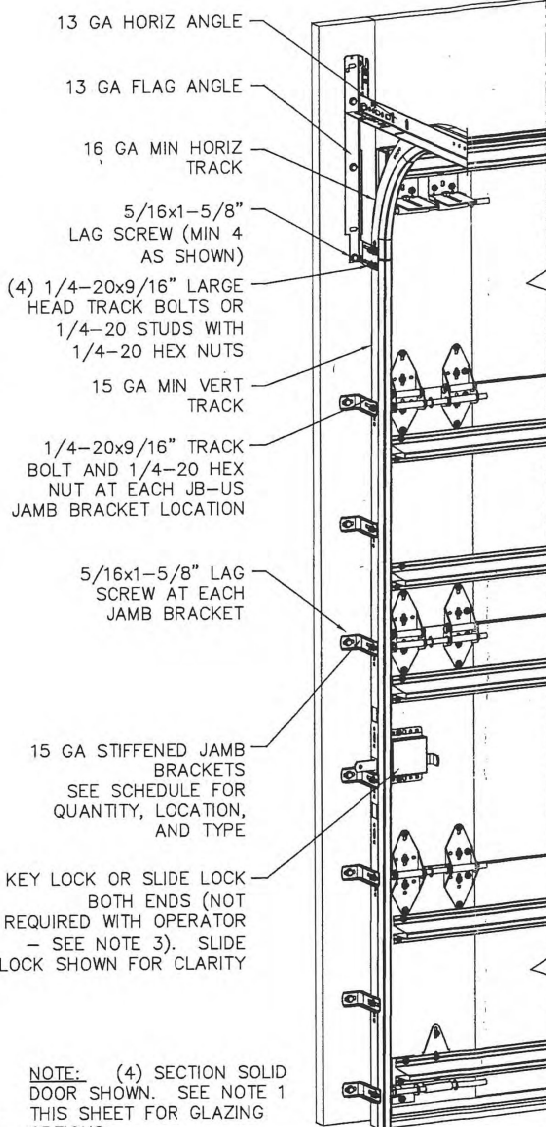
5. POLYURETHANE FOAM SHALL BE SANDWICHED BETWEEN FACER STEEL HAVING A MINIMUM 26 GA THICKNESS G-40 WITH PRIME COAT WITH A MINIMUM YIELD STRENGTH OF 46.8 KSI AND BACKER STEEL HAVING A MINIMUM 29 GA THICKNESS G-40 WITH PRIME COAT. OVERALL SECTION THICKNESS SHALL BE MINIMUM 1-5/16".

6. A 4-1/2" x 6" x 22 GA BACKER PLATE IS TO BE LOCATED AT EVERY INTERMEDIATE AND OUTER END HINGE LOCATION.

7. THE DESIGN OF THE SUPPORTING STRUCTURAL ELEMENTS SHALL BE THE RESPONSIBILITY OF THE PROFESSIONAL OF RECORD FOR THE BUILDING OR STRUCTURE AND IN ACCORDANCE WITH CURRENT BUILDING CODES FOR THE LOADS LISTED ON THIS DRAWING.

8. DOOR JAMB TO BE MINIMUM 2x6 STRUCTURAL GRADE LUMBER.

9. FOR LOW HEAD ROOM LIFT CONDITIONS, TOP BRACKET SHALL BE A 13 GA LHR 7/4 TOP BRACKET WITHOUT PUSH-NUTS AND WITH A MINIMUM OF (3) 1/4-14x7/8" SELF DRILLING CRIMPITE SCREWS IN LIEU OF THE BRACKET SHOWN ON THIS DRAWING. U-EAR ON TOP SECTION SHALL BE INSTALLED ON TOP OF LHR TOP BRACKETS.



NOTE: (4) SECTION SOLID DOOR SHOWN. SEE NOTE 1 THIS SHEET FOR GLAZING OPTIONS.

## SUPERIMPOSED DESIGN PRESSURE LOADS ON SUPPORTING STRUCTURE

DOOR WIDTH	DOOR HEIGHT	UNIFORM LOAD EACH JAMB (PLF)
8'-2"	ALL	+187.8/-212.3
9'-2"	ALL	+210.8/-238.3

**PRODUCT REVISED**  
As complying with the Florida Building Code  
NOA-No. **23-1120.23**  
Expiration Date: **12/04/2024**  
By: *Manuel Fern*  
Miami-Dade Product Control

## JAMB BRACKET SCHEDULE

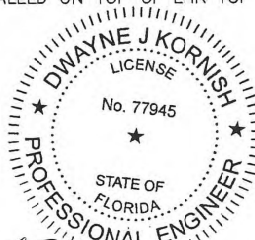
DOOR HEIGHT	NO. OF SECTIONS	NO. OF JAMB BRACKETS (EACH JAMB)	LOCATION OF CENTERLINE OF JAMB BRACKETS MEASURED FROM BOTTOM OF TRACK (ALL DIMENSIONS ± 2")
6'-6"	4	7	2" (JB-US), 10" (JB-US), 21-3/4" (JB-US), 29-3/4" (JB-US), 39" (JB-US), 48" (JB-US), 57-1/4" (JB-US)
7'-0"	4	7	2" (JB-US), 10" (JB-US), 21-3/4" (JB-US), 29-3/4" (JB-US), 42" (JB-US), 52-1/2" (JB-US), 63-1/4" (JB-US)
7'-6"	4 OR 5	8	2" (JB-US), 10" (JB-US), 18-3/4" (JB-US), 26-3/4" (JB-US), 36" (JB-US), 45" (JB-US), 54-1/4" (JB-US), 74-1/2" (JB-US)
8'-0"	4 OR 5	8	2" (JB-US), 10" (JB-US), 21-3/4" (JB-US), 29-3/4" (JB-US), 39" (JB-US), 43" (JB-US), 57-1/2" (JB-US), 75-1/2" (JB-US)

NOTE: (JB-US) FOLLOWING DIMENSION DENOTES SLOTTED JAMB BRACKET ATTACHED TO TRACK WITH 1/4-20x9/16" TRACK BOLT AND NUT AS SHOWN ABOVE.

ALL DOORS GREATER THAN 8' IN HEIGHT REQUIRE USE OF CONTINUOUS WALL ANGLE. SEE SHEET 3 FOR DETAILS.

DOORS MAY USE 3" TRACK IN LIEU OF 2" TRACK.E.

**PRODUCT REVISED**  
as complying with the Florida Building Code  
NOA-No. **18-0417.05**  
Expiration Date **12/04/2019**  
By: *[Signature]*  
Miami-Dade Product Control



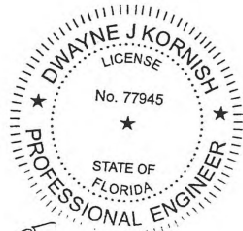
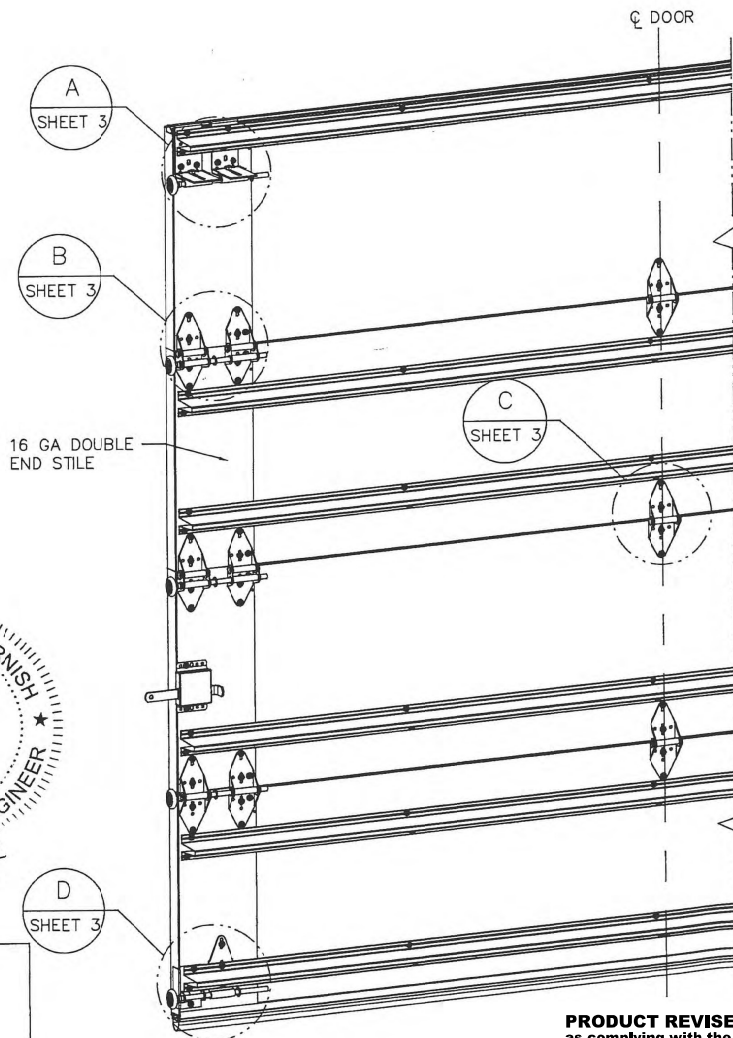
**PRODUCT REVISED**  
as complying with the Florida Building Code  
NOA-No. **20-1106.12**  
Expiration Date **12/04/2024**  
By: *[Signature]*  
Miami-Dade Product Control

**PRODUCT REVISED**  
as complying with the Florida Building Code  
NOA-No. **19-1015.04**  
Expiration Date **12/04/2024**  
By: *[Signature]*  
Miami-Dade Product Control



STATIC PRESSURE RATINGS		APPROVED SIZES		SCALE: N.T.S.		SIZE: A	
DESIGN (PSF):	+46.00/-52.00	MAX WIDTH:	9'-2"	DATE	NAME		
TEST (PSF):	+69.00/-78.00	MAX HEIGHT:	24'-0"	DRAWN	6/20/14	QRT	
IMPACT/CYCLIC RATED (YES/NO):	YES	MAX SECTION HEIGHT:	24'	CHECKED	DATE	INITIALS	
SERIES 5745/5765/7565/515/525				SHEET 1 OF 4			
				DRAWING PART NO. 411342 REV. B			

DWAYNE J. KORNISH, P.E.  
4578 COUNTY ROAD 160  
MOUNT HOPE, OHIO  
75745  
75745  
PROFESSIONAL ENGINEER'S SEAL PROVIDED ONLY FOR VERIFICATION OF WORKLOAD CONSTRUCTION DETAILS.



*Op. J. Kornish*  
3/14/2018

D  
SHEET 3

**PRODUCT REVISED**  
as complying with the Florida  
Building Code  
NOA-No. 20-1106.12

Expiration Date 12/04/2024

By *[Signature]*  
Miami-Dade Product Control

**PRODUCT REVISED**  
as complying with the Florida  
Building Code  
NOA-No. 19-1015.04

Expiration Date 12/04/2024

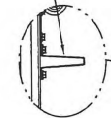
By *[Signature]*  
Miami-Dade Product Control

**PRODUCT REVISED**  
as complying with the Florida  
Building Code  
NOA-No. 18-0417.05

Expiration Date 12/04/2019

By *[Signature]*  
Miami-Dade Product Control

ALL U-BARS SHALL BE ATTACHED WITH (2)  
1/4-14x7/8" SELF DRILLING CRIMPTITE SCREWS  
AT EACH HINGE LOCATION AND BETWEEN ALL END  
HINGES AND INTERMEDIATE HINGES. A MINIMUM OF  
(14) FASTENERS ARE TO BE USED.



(10) SECTION DOORS WITH  
(15) 3" 20 GA 80 KSI U-BARS  
LOCATED AS SHOWN

(9) SECTION DOORS WITH  
(14) 3" 20 GA 80 KSI U-BARS  
LOCATED AS SHOWN

(8) SECTION DOORS WITH  
(12) 3" 20 GA 80 KSI U-BARS  
LOCATED AS SHOWN

(7) SECTION DOORS WITH  
(11) 3" 20 GA 80 KSI U-BARS  
LOCATED AS SHOWN

(6) SECTION DOORS WITH  
(9) 3" 20 GA 80 KSI U-BARS  
LOCATED AS SHOWN

(5) SECTION DOORS WITH  
(8) 3" 20 GA 80 KSI U-BARS  
LOCATED AS SHOWN

(4) SECTION DOORS WITH  
(6) 3" 20 GA 80 KSI U-BARS  
LOCATED AS SHOWN

REVISIONS  
B UPDATED TITLE BLOCK  
ESC 3/11/18

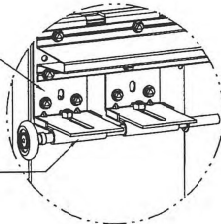
The Genuine. The Original.	STATIC PRESSURE RATINGS	APPROVED SIZES	SCALE: N.T.S.	SIZE: A
DESIGN (PSF):	+46.00/-52.00	MAX WIDTH: 9'-2"	DATE	NAME
TEST (PSF):	+69.00/-78.00	MAX HEIGHT: 24'-0"	DRAWN 6/20/14	GRT
IMPACT/CYCLIC RATED (YES/NO): YES	MAX SECTION HEIGHT: 24'	CHECKED	DATE	INITIALS
SERIES 5745/5765/7563/515/525				SHEET 2 OF 4
2501 S. STATE HWY 121 SUITE 200 LEWISVILLE, TEXAS 75067				DRAWING PART NO. 411342
				REV. B

DWAYNE J. KORNISH, P.E.  
4078 COUNTY ROAD 180  
MOUNT HOPE, OHIO  
FL RE 77945  
TX RE 117886  
PROFESSIONAL ENGINEER'S SEAL PROVIDED ONLY FOR  
VERIFICATION OF WINDLOAD CONSTRUCTION DETAILS.



(2) 12 GA COMMERCIAL 'L' FRAME  
TOP BRACKETS ATTACHED WITH (4)  
1/4-20x7/8" SELF DRILLING SCREWS  
(2 THROUGH U-BAR AND TOP  
BRACKET)

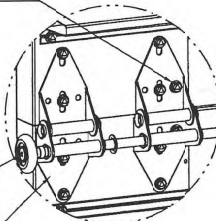
13 GA ROLLER SLIDE ATTACHED  
TO BRACKET WITH 5/16-18 BOLT  
& NUT IN THE CENTER SLOT



DETAIL A

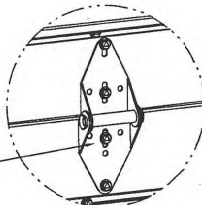
ADD (2) 1/4-14x7/8"  
SELF DRILLING CRIMPTITE SCREWS  
(INSIDE OF EACH INSIDE END HINGE)

2" STEEL ROLLER WITH 9" GRADE  
1144 OR EQUIVALENT STEM AND  
7/16" PUSH NUT AT EACH ROLLER  
LOCATION LOCATED BETWEEN THE  
BRACKET OR HINGE (EXCEPT  
PUSHNUT LOCATED ON THE TOP  
AND BOTTOM ROLLER IS LOCATED  
OUTSIDE OF BOTH BRACKETS). 1/4"  
MAX BETWEEN PUSH NUT AND  
OUTER HINGE.



DETAIL B

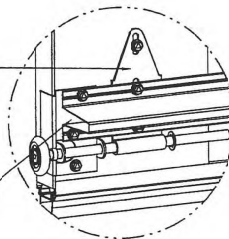
(2) 14 GA WIDE BODY END  
HINGES EACH ATTACHED WITH  
(4) 1/4-14x7/8" SELF  
DRILLING CRIMPTITE SCREWS



DETAIL C

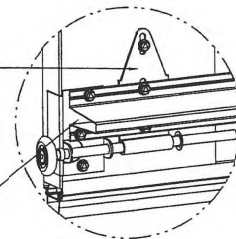
14 GA WIDE BODY  
INTERMEDIATE HINGE  
ATTACHED WITH (4)  
1/4-14x7/8" SELF DRILLING  
CRIMPTITE SCREWS

12 GA EXTENSION BRACKET  
ATTACHED WITH (3) 1/4-14x7/8"  
SELF DRILLING CRIMPTITE SCREWS  
(2 THROUGH U-BAR AND BRACKET)



DETAIL D

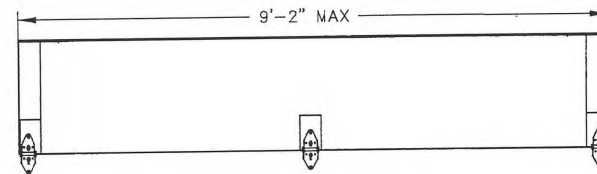
14 GA BOTTOM BRACKET  
ATTACHED WITH (2)  
1/4-14x7/8" SELF DRILLING  
CRIMPTITE SCREWS THROUGH  
U-BAR AND BOTTOM BRACKET  
AND (1) 1/4-14x5/8" SELF  
DRILLING TAMPER RESISTANT  
SCREW



DETAIL E

NOTE: IF 3" TRACK IS USED, THEN END  
HINGES TO BE 11 GA MODIFIED HINGES.  
ROLLERS TO BE 3" STEEL ROLLERS WITH  
9/16" DIA. X 9" LONG SHAFT AT ALL  
LOCATIONS EXCEPT TOP AND BOTTOM.  
TOP AND BOTTOM ROLLERS TO BE 3"  
STEEL ROLLERS WITH 7/16" DIA. X 9"  
LONG SHAFT. PUSH NUTS ONLY USED  
AT TOP AND BOTTOM ROLLER  
LOCATIONS.

HINGE & BACKER PLATE LOCATIONS



**PRODUCT REVISED**  
As complying with the Florida  
Building Code  
NOA-No. **23-1120.23**  
Expiration Date **12/04/2024**  
By: *Manuel Torres*  
Miami-Dade Product Control

**PRODUCT REVISED**  
as complying with the Florida  
Building Code  
NOA-No. **20-1106.12**  
Expiration Date **12/04/2024**  
By: *Manuel Torres*  
Miami-Dade Product Control

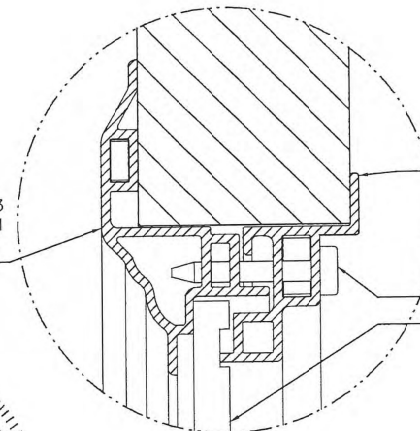
**PRODUCT REVISED**  
as complying with the Florida  
Building Code  
NOA-No. **19-1015.04**  
Expiration Date **12/04/2024**  
By: *Manuel Torres*  
Miami-Dade Product Control

**PRODUCT REVISED**  
as complying with the Florida  
Building Code  
NOA-No. **18-0417.05**  
Expiration Date **12/04/2019**  
By: *Manuel Torres*  
Miami-Dade Product Control

T-5 6063  
ALUMINUM  
EXTERIOR  
FRAME

T-5 6063 ALUMINUM  
INTERIOR FRAME

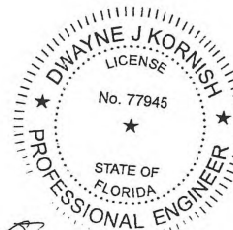
SHEETMETAL SCREW  
1/4" POLYCARBONATE



DETAIL E

**PRODUCT REVISED**  
as complying with the Florida  
Building Code  
NOA-No. **18-0417.05**  
Expiration Date **12/04/2019**  
By: *Manuel Torres*  
Miami-Dade Product Control

**PRODUCT REVISED**  
as complying with the Florida  
Building Code  
NOA-No. **18-0417.05**  
Expiration Date **12/04/2019**  
By: *Manuel Torres*  
Miami-Dade Product Control



*Manuel Torres* 3/14/2018

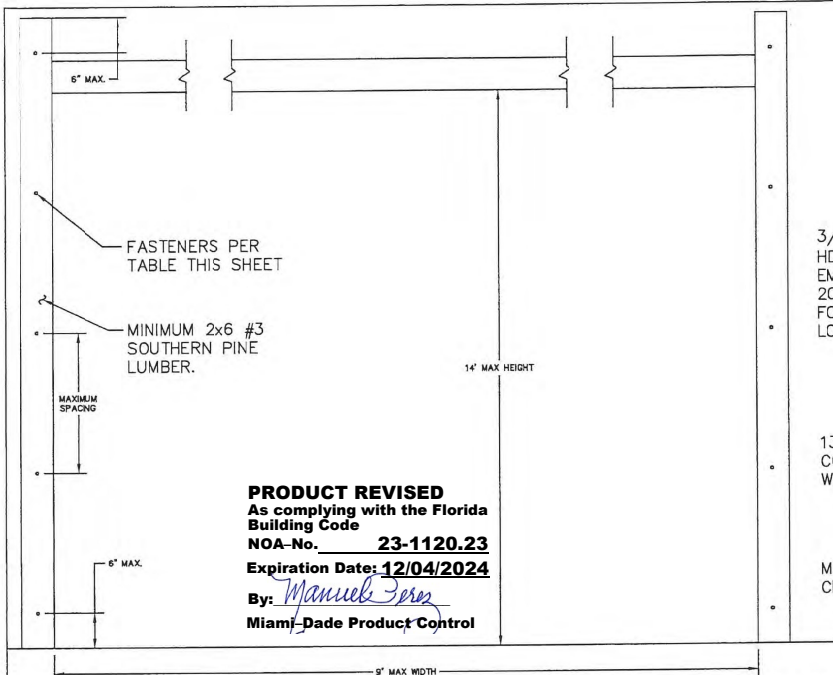
The Genuine. The Original.		STATIC PRESSURE RATINGS		APPROVED SIZES		SCALE: N.T.S.		SIZE: A	
DESIGN (PSF):	+48.00/-52.00	MAX WIDTH:	9'-2"	DATE	NAME	DATE	NAME	DATE	NAME
TEST (PSF):	+89.00/-78.00	MAX HEIGHT:	24'-0"	DRAWN	6/20/14	GRT			
IMPACT/CYCLIC RATED (YES/NO):	YES	MAX SECTION HEIGHT:	24"	CHECKED	DATE	INITIALS			
SERIES 5745/5765/7565/515/525								SHEET 3 OF 4	
2501 S. STATE HWY 121 SUITE 200 LEWISVILLE, TEXAS 75067								DRAWING PART NO.	REV.
								411342	B

DWAYNE J. KORNISH, P.E.  
6576 COUNTY ROAD 180  
MOUNT HOPE, OHIO  
FL 32786  
TX 75785

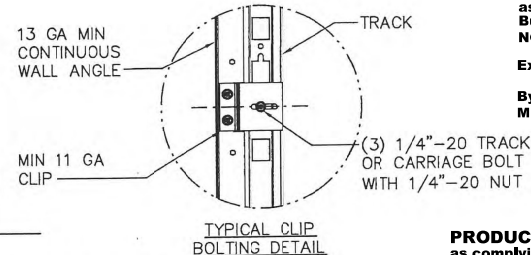
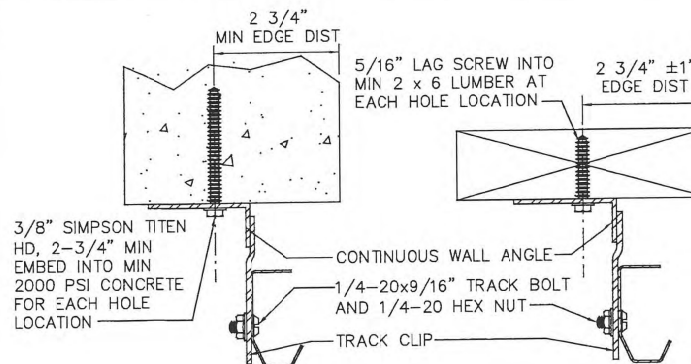
PROFESSIONAL ENGINEER'S SEAL PROVIDED ONLY FOR  
VERIFICATION OF WINDLOAD CONSTRUCTION DETAILS.

REVISIONS

B UPDATED TITLE BLOCK  
ESC 3/4/18

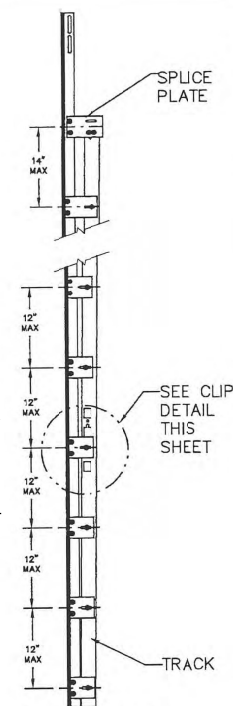


**PRODUCT REVISED**  
 As complying with the Florida  
 Building Code  
 NOA-No. **23-1120.23**  
 Expiration Date: **12/04/2024**  
 By: *Manuel Fern*  
 Miami-Dade Product Control



**PRODUCT REVISED**  
 as complying with the Florida  
 Building Code  
 NOA-No. **20-1106.12**  
 Expiration Date **12/04/2024**  
 By: *[Signature]*  
 Miami-Dade Product Control

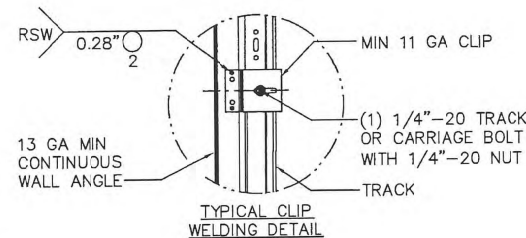
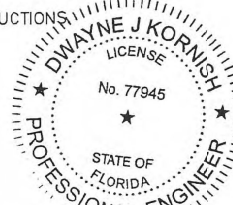
**PRODUCT REVISED**  
 as complying with the Florida  
 Building Code  
 NOA-No. **19-1015.04**  
 Expiration Date **12/04/2024**  
 By: *[Signature]*  
 Miami-Dade Product Control



CLIPS TO BE EITHER BOLTED OR WELDED. SEE DETAILS THIS PAGE.

1. BASED ON 3/8" SIMPSON TITEN HEAVY DUTY SCREW ANCHOR WITH A 1" O.D. WASHER INTO CONCRETE WITH A MINIMUM EMBEDMENT DEPTH OF 2-3/4" AND A MINIMUM EDGE DISTANCE OF 2-3/4".
2. BASED ON 3/8" SIMPSON TITEN HEAVY DUTY SCREW ANCHOR WITH A 1" O.D. WASHER INTO GROUT FILLED CMU WITH A MINIMUM EMBEDMENT DEPTH OF 2-3/4", A MINIMUM EDGE DISTANCE OF 4", AND A MINIMUM END DISTANCE OF 4". CONCRETE MASONRY UNITS SHALL CONFORM TO ASTM C90 AND GROUT SHALL CONFORM TO ASTM C476.
3. BASED ON 3/8" DIAMETER x 3" LONG LAG SCREWS WITH 1" O.D. WASHERS WITH A 1-9/32" THREAD PENETRATION INTO SEASONED DRY WOOD SUPPORTING STRUCTURE.
4. PROVIDE QUANTITY OF SCREW ANCHORS OR LAG SCREWS AS REQUIRED TO MAINTAIN MAXIMUM SPACING AS SHOWN IN TABLE WITH A MINIMUM OF THREE (3) SCREW ANCHORS OR LAG SCREWS PER JAMB. SCREW ANCHORS OR LAG SCREWS AT TOP AND BOTTOM OF JAMB SHALL BE PLACED A MAXIMUM OF 6" FROM THE END OF THE JAMB.
5. LOAD PER JAMB CALCULATED TO BE A MAXIMUM OF +210.8/-238.3 LBS PER FOOT.
6. CHART INCLUDES A SAFETY FACTOR OF 4.
7. DOOR JAMB TO BE MINIMUM 2x6 NO. 3 SOUTHERN PINE LUMBER (MIN) MOUNTED DIRECTLY TO SUPPORT STRUCTURE.
8. DESIGN OF THE SUPPORT STRUCTURE SHALL BE THE SOLE RESPONSIBILITY OF THE BUILDING DESIGNER AND SHALL BE DESIGNED FOR THE LOADS LISTED IN NOTE 5.
9. SCREW ANCHORS OR LAG SCREWS SHALL BE INSTALLED PER MANUFACTURER'S WRITTEN INSTRUCTIONS.

MAX SPACING OF ANCHORS/SCREWS PER JAMB (IN)		
3/8" SIMPSON TITEN HD SCREW ANCHOR TO MINIMUM 2000 PSI CONCRETE <sup>NOTE 1</sup>	3/8" SIMPSON TITEN HD SCREW ANCHOR TO MINIMUM 2000 PSI GROUT FILLED CMU <sup>NOTE 2</sup>	3/8" x 3" LONG LAG SCREW <sup>NOTE 3</sup>
24	24	24



**PRODUCT REVISED**  
 as complying with the Florida  
 Building Code  
 NOA-No. **18-0417.05**  
 Expiration Date **12/04/2019**  
 By: *[Signature]*  
 Miami-Dade Product Control

## CONTINUOUS WALL ANGLE DETAILS

The Genuine. The Original.  
**OVERHEAD DOOR**  
 2501 S. STATE HWY 121  
 SUITE 200  
 LEWISVILLE, TEXAS 75067

STATIC PRESSURE RATINGS	APPROVED SIZES	SCALE: N.T.S.	SIZE: A
DESIGN (PSF): +45.00/-52.00	MAX WIDTH: 9'-2"	DATE: 6/20/14	NAME: GRT
TEST (PSF): +69.00/-78.00	MAX HEIGHT: 24'-0"	DRAWN: 6/20/14	DATE: 6/20/14
IMPACT/CYCLIC RATED (YES/NO): YES	MAX SECTION HEIGHT: 24"	CHECKED: 6/20/14	INITIALS: 411342
SERIES 5745/5765/7565/515/525		SHEET 4 OF 4	
		DRAWING PART NO.	REV.
		411342	

DWAYNE J. KORNISH, PE  
 4576 COUNTY ROAD 180  
 MOUNT HOPE, OHIO  
 FL RE 77945  
 TX RE 177885  
 PROFESSIONAL ENGINEER'S SEAL PROVIDED ONLY FOR  
 VERIFICATION OF WINDLOAD CONSTRUCTION DETAILS.

*[Signature]* 3/19/2018

REVISIONS  
 B UPDATED TITLE BLOCK  
 ESC 3/14/18