



DEPARTMENT OF REGULATORY AND ECONOMIC RESOURCES (RER)
BOARD AND CODE ADMINISTRATION DIVISION

NOTICE OF ACCEPTANCE (NOA)

MIAMI-DADE COUNTY
PRODUCT CONTROL SECTION

11805 SW 26 Street, Room 208
Miami, Florida 33175-2474
T (786) 315-2590 F (786) 315-2599

www.miamidade.gov/building

Overhead Door Corporation
2501 South State Hwy. 121, Suite 200
Lewisville, Texas 75067

SCOPE: This NOA is being issued under the applicable rules and regulations governing the use of construction materials. The documentation submitted has been reviewed and accepted by Miami-Dade County RER-Product Control Section to be used in Miami Dade County and other areas where allowed by the Authority Having Jurisdiction (AHJ). This NOA shall not be valid after the expiration date stated below. The Miami-Dade County Product Control Section (In Miami Dade County) and/or the AHJ (in areas other than Miami Dade County) reserve the right to have this product or material tested for quality assurance purposes. If this product or material fails to perform in the accepted manner, the manufacturer will incur the expense of such testing and the AHJ may immediately revoke, modify, or suspend the use of such product or material within their jurisdiction. RER reserves the right to revoke this acceptance, if it is determined by Miami-Dade County Product Control Section that this product or material fails to meet the requirements of the applicable building code.

This product is approved as described herein and has been designed to comply with the Florida Building Code, including the High Velocity Hurricane Zone.

DESCRIPTION: Series 610, 611, 620 and 621 Steel Rolling Door up to 16ft.-0in. Wide

APPROVAL DOCUMENT: Drawing No. **D-308125**, titled "Series 610/620 Rolling Service Door 16' Dade County", sheets 1 and 2 of 2, dated 09/05/03 and 10/10/03, with revision H dated 05/03/13, prepared by manufacturer, signed and sealed by Mark A. Sawicki, P.E., bearing the Miami-Dade County Product Control Revision stamp with the Notice of Acceptance number and expiration date by the Miami-Dade County Product Control Section.

MISSILE IMPACT RATING: Large and Small Missile Impact Resistant

LABELING: Each unit shall bear a permanent label with the manufacturer's name or logo, manufacturing address, model number, the positive and negative design pressure rating, indicate impact rated if applicable, installation instruction drawing reference number, approval number (NOA), the applicable test standards, and the statement reading 'Miami-Dade County Product Control Approved' is to be located on the door's side track, bottom angle, or inner surface of a panel.

RENEWAL of this NOA shall be considered after a renewal application has been filed and there has been no change in the applicable building code negatively affecting the performance of this product.

TERMINATION of this NOA will occur after the expiration date or if there has been a revision or change in the materials, use, and/or manufacture of the product or process. Misuse of this NOA as an endorsement of any product, for sales, advertising or any other purposes shall automatically terminate this NOA. Failure to comply with any section of this NOA shall be cause for termination and removal of NOA.

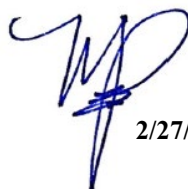
ADVERTISEMENT: The NOA number preceded by the words Miami-Dade County, Florida, and followed by the expiration date may be displayed in advertising literature. If any portion of the NOA is displayed, then it shall be done in its entirety.

INSPECTION: A copy of this entire NOA shall be provided to the user by the manufacturer or its distributors and shall be available for inspection at the job site at the request of the Building Official.

This NOA **revises NOA No. 20-1130.07** and consists of this page 1 and evidence pages E-1, E-2 and E-3, as well as approval document mentioned above.

The submitted documentation was reviewed by **Manuel Perez, P.E.**




2/27/24

NOA No. 23-1129.04
Expiration Date: September 16, 2024
Approval Date: March 07, 2024
Page 1

Overhead Door Corporation

NOTICE OF ACCEPTANCE: EVIDENCE SUBMITTED


1. EVIDENCE SUBMITTED UNDER PREVIOUS NOA's

A. DRAWINGS

1. Manufacturer's die drawings and sections.
(Submitted under NOA No. 03-1015.01)
2. Drawing No. **D-308125**, titled "Series 610/620 Rolling Service Door 16' Dade County", sheets 1 and 2 of 2, dated 09/05/03 and 10/10/03, with revision H dated 05/03/13, prepared by manufacturer, signed and sealed by Mark A. Sawicki, P.E.
(Submitted under NOA No. 15-1228.05)

B. TESTS

1. Test reports on: 1) Uniform Static Air Pressure Test, Loading per FBC, TAS 202-94
2) Large Missile Impact Test per FBC, TAS 201-94
3) Cyclic Wind Pressure Loading per FBC, TAS 203-94
4) Forced Entry Test, per FBC 2411 3.2.1, TAS 202-94
5) Tensile Test per ASTM E8
along with marked-up drawings and installation diagram of a Series 610 rolling garage door, prepared by Architectural Testing, Inc, Test Report No. **C8189.01-109-18**, dated 10/10/13, signed and sealed by Michael D. Stremmel, P.E.
(Submitted under NOA No. 13-1121.06)
2. Test report on Salt Spray (Fog) Test per ASTM B-117 of G90 and G40 galvanized steel with prime coat samples, prepared by Environmental Testing Laboratory, Inc, Test Report No. **12732**, dated 06/22/13 and signed by Brady Richard.
(Submitted under NOA No. 13-1121.06)
3. Test report on Salt Spray (Fog) Test per ASTM B-117 of G30, G40 and G90 galvanized steel samples, prepared by Environmental Testing Laboratory, Inc, Test Report No. **ETL-9100550287**, dated 03/13/06 and signed by Brady Richard.
(Submitted under NOA No. 05-1003.24)
4. Test reports on: 1) Uniform Static Air Pressure Test, Loading per FBC, TAS 202-94
2) Large Missile Impact Test per FBC, TAS 201-94
3) Cyclic Wind Pressure Loading per FBC, TAS 203-94
4) Tensile Test per ASTM E8
along with marked-up drawings and installation diagram of a 16' x 10' steel roll-up service door, prepared by Architectural Testing, Inc, Test Report No. **ATI 01-43464.02**, dated 09/05/03, signed and sealed by L. G. Krupke, P.E.
(Submitted under NOA No. 03-1015.01)


Manuel Pérez, P.E.
Product Control Examiner
NOA No. 23-1129.04
Expiration Date: September 16, 2024
Approval Date: March 07, 2024

Overhead Door Corporation

NOTICE OF ACCEPTANCE: EVIDENCE SUBMITTED

1. EVIDENCE SUBMITTED UNDER PREVIOUS NOA's (CONTINUED)

C. CALCULATIONS

1. Wall fastener calculations prepared by manufacturer, dated 10/31/13, signed and sealed by Mark A. Sawicki, P.E.
(Submitted under NOA No. 13-1121.06)
2. Calculations for Miami-Dade County Product Approval of 22-, 20- & 18-gauge rolling garage door, prepared by manufacturer on sheet 2 of 3, dated 09/16/05, signed and sealed by LeRoy G. Krupke, P.E.
(Submitted under NOA No. 05-1003.24)

D. QUALITY ASSURANCE

1. Miami-Dade Department of Regulatory and Economic Resources (RER)

E. MATERIAL CERTIFICATIONS

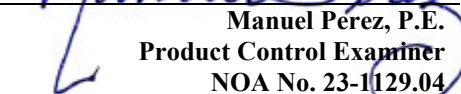
1. None.

F. STATEMENTS

1. Statement letter of conformance, complying with **FBC 7^h Edition (2020)** and manufacturer's statement that the product remains unchanged from the existing drawings, dated November 10, 2020, issued by manufacturer, signed and sealed by David L. Monsour, P.E.
(Submitted under NOA No. 20-1130.07)
2. Statement letter of conformance, complying with **FBC 2010** and of no financial interest prepared by Overhead Door Corporation, dated 10/31/13, signed and sealed by Mark A. Sawicki, P.E.
(Submitted under NOA No. 13-1121.06)

G. OTHERS

1. Notice of Acceptance No. **18-1217.07**, issued to Overhead Door Corporation, for their Series 610/611/620/621 Steel Rolling Door up to 16'-0" Wide, approved on 01/31/19 and expiring on 09/16/24.


Manuel Pérez, P.E.
Product Control Examiner
NOA No. 23-1129.04
Expiration Date: September 16, 2024
Approval Date: March 07, 2024

Overhead Door Corporation

NOTICE OF ACCEPTANCE: EVIDENCE SUBMITTED

2. NEW EVIDENCE SUBMITTED

A. DRAWINGS

1. None.

B. TESTS

1. None.

C. CALCULATIONS

1. None.

D. QUALITY ASSURANCE

1. Miami-Dade Department of Regulatory and Economic Resources (RER)

E. MATERIAL CERTIFICATIONS


1. None.

F. STATEMENTS

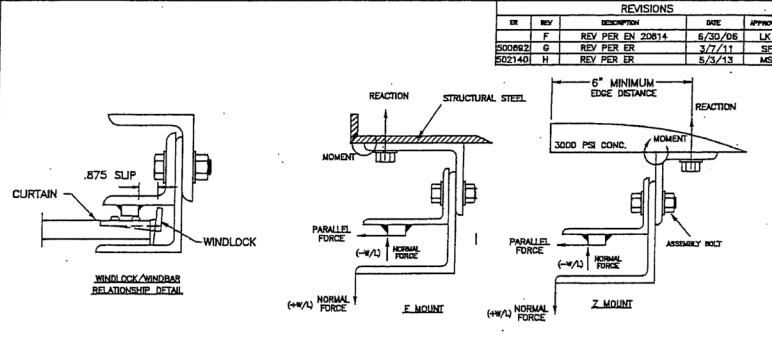
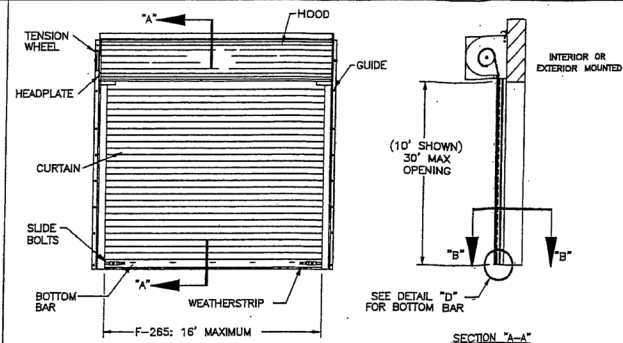
1. Statement letter of conformance, complying with **FBC 8th Edition (2023)** and of no financial interest, dated February 12, 2024, issued by manufacturer, signed and sealed by Dor Gamliel, P.E.

G. OTHERS

1. Notice of Acceptance No. **20-1130.07**, issued to Overhead Door Corporation, for their Series 610/611/620/621 Steel Rolling Door up to 16'-0" Wide, approved on 01/28/21 and expiring on 09/16/24.


Manuel Pérez, P.E.
Product Control Examiner
NOA No. 23-1129.04
Expiration Date: September 16, 2024
Approval Date: March 07, 2024

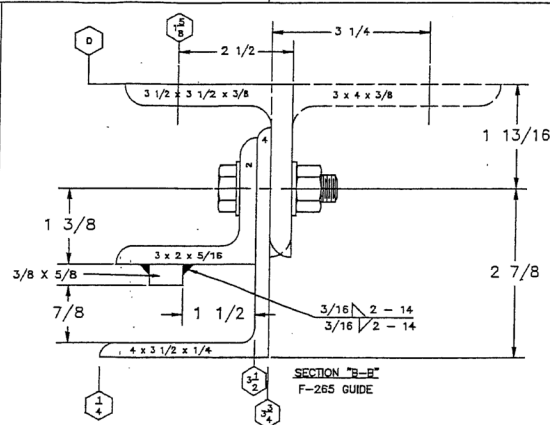
1. $(-W/L) =$ NEGATIVE WINDLOAD
 $(+W/L) =$ POSITIVE WINDLOAD
2. WALL JOINTS MUST BE WELDED TO STEEL JAMB.
SEE SHEET 2 FOR WELD DETAIL
3. RATED DESIGN LOAD ± 65 PSF.
4. CURTAIN MATERIAL: ASTM A-653 CS TYPE B.
GUIDE MATERIAL: ASTM A-36
5. ALTERNATE CURTAIN MATERIAL: AISI-304 SS.
MINIMUM YIELD 40,000 PSI.
6. CURTAIN MATERIAL SHALL BE GALVANIZED ACCORDING
TO ASTM A-525 TO G40 MINIMUM.
7. THE DOOR MUST BE INSTALLED WITH THE TENSION WHEEL
FACING THE INSIDE OF THE BUILDING.
8. SLIDE BOLTS MUST BE ENGAGED AND CHAIN MUST BE
HOOKED WHEN HURRICANE WINDS ARE ANNOUNCED
9. WINDLOAD MATERIAL: LOW CARBON CAST STEEL, GRADE 70-46
(485-250) PER ASTM A27. MIN TENSILE 70-KSI MIN YIELD
76-KSI MIN ELONG.
10. WINDLOCKS ATTACHED TO EACH SLAT (CONTINUOUS)
11. RIVET SPECIFICATIONS:
1/4" DIAMETER RIVET, MINIMUM 1006 LOW-CARBON STEEL.



REVISIONS				
TR	REV	DESCRIPTION	DATE	APPROVAL
	F	REV PER EN 20814	6/30/06	LK
500692	G	REV PER ER	3/7/11	SFT
502140	H	REV PER ER	5/3/13	MS

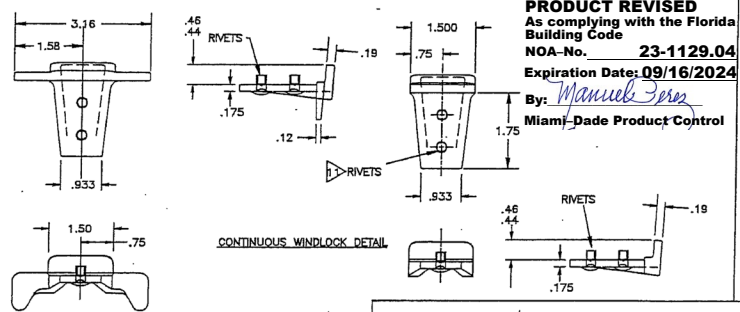
LBS/FT DOOR	(E-MOUNT) LOADS			(Z-MOUNT) LOADS *		
	22 GA **	20 GA	18 GA	22 GA **	20 GA	18 GA
REACTION	6265	6116	5850	1271	1244	1196
NORMAL	520	520	520	520	520	520
PARALLEL	1973	1940	1851	1973	1940	1851

* LOADS - PER FOOT OF HEIGHT



	ASSEMBLY BOLT	WALL BOLT STEEL JAMB	WALL BOLT * CONCRETE JAMB
F-265	1/2" GRADE 5, 11" O.C.	1/2" GRADE 5, 11" O.C.	1/2" & 3/4" EMB HULT KWIK BOLT 3 OR POWERS WEDGE BOLT 6" O.C.

* 3000 PSI MINIMUM AND 6" EDGE DISTANCE FOR ANCHORS
2) NOTE: FOR DETAILS ON WELDING GUIDES TO STEEL JAMBS SEE SHEET 2.

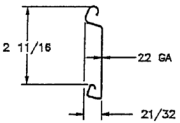


PRODUCT REVISED
As complying with the Florida
Building Code
NOA-No. **23-1129.04**
Expiration Date: **09/16/2024**
By: Manuel Perez
Miami-Dade Product Control

PRODUCT REVISED
as complying with the Florida
Building Code
NOA-No. 20-1130.07
Expiration Date 09/16/2024
By CS
Miami-Dade Product Control

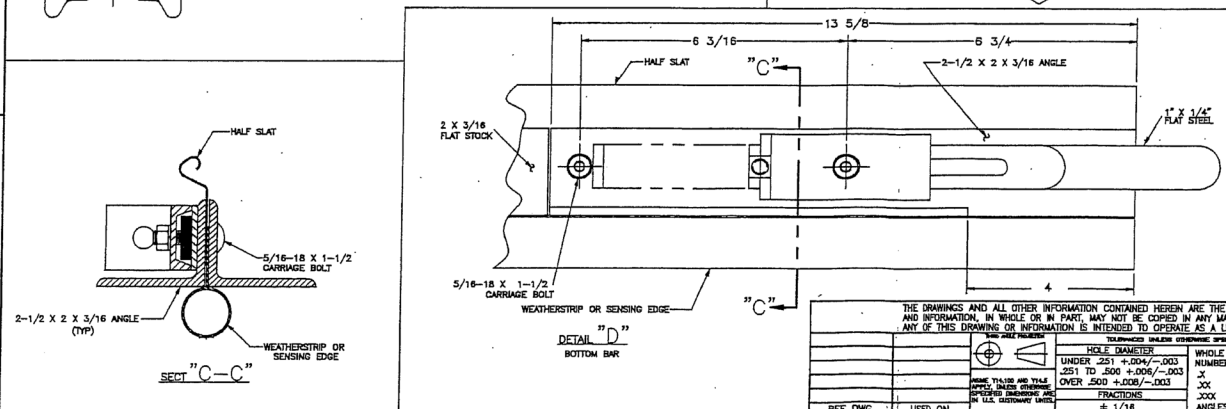
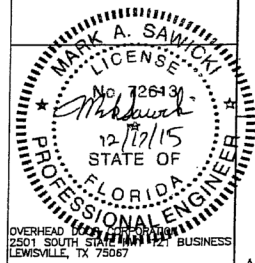
PRODUCT RENEWED
as complying with the Florida
Building Code . . .
Acceptance No.
Expiration Date

By _____
Miami Dade Product Control





F-265 SLAT
GAUGE OPTIONS: 22**, 20, 18
**TESTED IN ACCORDANCE WITH DADE COUNTY
PROTOCOLS TAS 201-94, TAS 202-94, AND TAS 203-94

SERIES 611/621 ARE
EQUIVALENT CONSTRUCTION



THE DRAWINGS AND ALL OTHER INFORMATION CONTAINED HEREIN ARE THE CONFIDENTIAL AND PROPRIETARY PROPERTY OF OVERHEAD DOOR CORPORATION AND ITS AFFILIATED COMPANIES. THIS DRAWING AND INFORMATION, IN WHOLE OR IN PART, MAY NOT BE COPIED IN ANY MANNER OR DISCLOSED TO ANYONE WITHOUT THE PRIOR WRITTEN CONSENT OF OVERHEAD DOOR CORPORATION. NO DISCLOSURE OF ANY OF THIS DRAWING OR INFORMATION IS INTENDED TO OPERATE AS A LICENSE OR AUTHORIZATION TO USE IT FOR ANY PURPOSE WITHOUT THE SPECIFIC WRITTEN CONSENT OF OVERHEAD DOOR CORPORATION.

 ROLLED DIAMETER UNDER .251 +.004/- .003 .251 TO .500 +.006/- .003 OVER .500 +.008/- .003		 WHOLE NUMBERS: .25 .3 .31 .33 .35 .37 .39 .41 .43 .45 .47 .49 .51 .53 .55 .57 .59 .61 .63 .65 .67 .69 .71 .73 .75 .77 .79 .81 .83 .85 .87 .89 .91 .93 .95 .97 .99 1.01 1.03 1.05 1.07 1.09 1.11 1.13 1.15 1.17 1.19 1.21 1.23 1.25 1.27 1.29 1.31 1.33 1.35 1.37 1.39 1.41 1.43 1.45 1.47 1.49 1.51 1.53 1.55 1.57 1.59 1.61 1.63 1.65 1.67 1.69 1.71 1.73 1.75 1.77 1.79 1.81 1.83 1.85 1.87 1.89 1.91 1.93 1.95 1.97 1.99 2.01 2.03 2.05 2.07 2.09 2.11 2.13 2.15 2.17 2.19 2.21 2.23 2.25 2.27 2.29 2.31 2.33 2.35 2.37 2.39 2.41 2.43 2.45 2.47 2.49 2.51 2.53 2.55 2.57 2.59 2.61 2.63 2.65 2.67 2.69 2.71 2.73 2.75 2.77 2.79 2.81 2.83 2.85 2.87 2.89 2.91 2.93 2.95 2.97 2.99 3.01 3.03 3.05 3.07 3.09 3.11 3.13 3.15 3.17 3.19 3.21 3.23 3.25 3.27 3.29 3.31 3.33 3.35 3.37 3.39 3.41 3.43 3.45 3.47 3.49 3.51 3.53 3.55 3.57 3.59 3.61 3.63 3.65 3.67 3.69 3.71 3.73 3.75 3.77 3.79 3.81 3.83 3.85 3.87 3.89 3.91 3.93 3.95 3.97 3.99 4.01 4.03 4.05 4.07 4.09 4.11 4.13 4.15 4.17 4.19 4.21 4.23 4.25 4.27 4.29 4.31 4.33 4.35 4.37 4.39 4.41 4.43 4.45 4.47 4.49 4.51 4.53 4.55 4.57 4.59 4.61 4.63 4.65 4.67 4.69 4.71 4.73 4.75 4.77 4.79 4.81 4.83 4.85 4.87 4.89 4.91 4.93 4.95 4.97 4.99 5.01 5.03 5.05 5.07 5.09 5.11 5.13 5.15 5.17 5.19 5.21 5.23 5.25 5.27 5.29 5.31 5.33 5.35 5.37 5.39 5.41 5.43 5.45 5.47 5.49 5.51 5.53 5.55 5.57 5.59 5.61 5.63 5.65 5.67 5.69 5.71 5.73 5.75 5.77 5.79 5.81 5.83 5.85 5.87 5.89 5.91 5.93 5.95 5.97 5.99 6.01 6.03 6.05 6.07 6.09 6.11 6.13 6.15 6.17 6.19 6.21 6.23 6.25 6.27 6.29 6.31 6.33 6.35 6.37 6.39 6.41 6.43 6.45 6.47 6.49 6.51 6.53 6.55 6.57 6.59 6.61 6.63 6.65 6.67 6.69 6.71 6.73 6.75 6.77 6.79 6.81 6.83 6.85 6.87 6.89 6.91 6.93 6.95 6.97 6.99 7.01 7.03 7.05 7.07 7.09 7.11 7.13 7.15 7.17 7.19 7.21 7.23 7.25 7.27 7.29 7.31 7.33 7.35 7.37 7.39 7.41 7.43 7.45 7.47 7.49 7.51 7.53 7.55 7.57 7.59 7.61 7.63 7.65 7.67 7.69 7.71 7.73 7.75 7.77 7.79 7.81 7.83 7.85 7.87 7.89 7.91 7.93 7.95 7.97 7.99 8.01 8.03 8.05 8.07 8.09 8.11 8.13 8.15 8.17 8.19 8.21 8.23 8.25 8.27 8.29 8.31 8.33 8.35 8.37 8.39 8.41 8.43 8.45 8.47 8.49 8.51 8.53 8.55 8.57 8.59 8.61 8.63 8.65 8.67 8.69 8.71 8.73 8.75 8.77 8.79 8.81 8.83 8.85 8.87 8.89 8.91 8.93 8.95 8.97 8.99 9.01 9.03 9.05 9.07 9.09 9.11 9.13 9.15 9.	
---	--	--	--

