



DEPARTMENT OF REGULATORY AND ECONOMIC RESOURCES (RER)
BOARD AND CODE ADMINISTRATION DIVISION

NOTICE OF ACCEPTANCE (NOA)

MIAMI-DADE COUNTY
PRODUCT CONTROL SECTION

11805 SW 26 Street, Room 208
Miami, Florida 33175-2474
T (786) 315-2590 F (786) 315-2599

www.miamidade.gov/building

Overhead Door Corporation

2501 South State Hwy. 121, Suite 200

Lewisville, Texas 75067

SCOPE: This NOA is being issued under the applicable rules and regulations governing the use of construction materials. The documentation submitted has been reviewed and accepted by Miami-Dade County RER-Product Control Section to be used in Miami Dade County and other areas where allowed by the Authority Having Jurisdiction (AHJ). This NOA shall not be valid after the expiration date stated below. The Miami-Dade County Product Control Section (In Miami Dade County) and/or the AHJ (in areas other than Miami Dade County) reserve the right to have this product or material tested for quality assurance purposes. If this product or material fails to perform in the accepted manner, the manufacturer will incur the expense of such testing and the AHJ may immediately revoke, modify, or suspend the use of such product or material within their jurisdiction. RER reserves the right to revoke this acceptance, if it is determined by Miami-Dade County Product Control Section that this product or material fails to meet the requirements of the applicable building code.

This product is approved as described herein and has been designed to comply with the Florida Building Code, including the High Velocity Hurricane Zone.

DESCRIPTION: Series 635 Steel Rolling Door up to 14ft.-0in. Wide

APPROVAL DOCUMENT: Drawing No. **D-308232**, titled "Series 635 Rolling Fire Door 14' Miami-Dade County", sheets 1 and 2 of 2, dated 09/23/09, with revision F dated 09/20/13, prepared by manufacturer, signed and sealed by Mark A. Sawicki, P.E., bearing the Miami-Dade County Product Control Revision stamp with the Notice of Acceptance number and expiration date by the Miami-Dade County Product Control Section.

MISSILE IMPACT RATING: Large and Small Missile Impact Resistant

LABELING: Each unit shall bear a permanent label with the manufacturer's name or logo, manufacturing address, model number, the positive and negative design pressure rating, indicate impact rated if applicable, installation instruction drawing reference number, approval number (NOA), the applicable test standards, and the statement reading 'Miami-Dade County Product Control Approved' is to be located on the door's side track, bottom angle, or inner surface of a panel.

RENEWAL of this NOA shall be considered after a renewal application has been filed and there has been no change in the applicable building code negatively affecting the performance of this product.

TERMINATION of this NOA will occur after the expiration date or if there has been a revision or change in the materials, use, and/or manufacture of the product or process. Misuse of this NOA as an endorsement of any product, for sales, advertising or any other purposes shall automatically terminate this NOA. Failure to comply with any section of this NOA shall be cause for termination and removal of NOA.

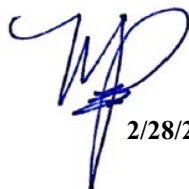
ADVERTISEMENT: The NOA number preceded by the words Miami-Dade County, Florida, and followed by the expiration date may be displayed in advertising literature. If any portion of the NOA is displayed, then it shall be done in its entirety.

INSPECTION: A copy of this entire NOA shall be provided to the user by the manufacturer or its distributors and shall be available for inspection at the job site at the request of the Building Official.

This NOA **revises NOA No. 20-1130.10** and consists of this page 1 and evidence pages E-1, E-2 and E-3, as well as approval document mentioned above.

The submitted documentation was reviewed by **Manuel Perez, P.E.**




2/28/24

NOA No. 23-1129.07
Expiration Date: December 02, 2024
Approval Date: March 07, 2024
Page 1

Overhead Door Corporation

NOTICE OF ACCEPTANCE: EVIDENCE SUBMITTED


1. EVIDENCE SUBMITTED UNDER PREVIOUS NOA's

A. DRAWINGS

1. Manufacturer's die drawings and sections.
(Submitted under NOA No. 05-1003.21)
2. Drawing No. **D-308232**, titled "Series 635 Rolling Fire Door 14' Miami-Dade County", sheets 1 and 2 of 2, dated 09/23/09, with revision F dated 09/20/13, prepared by manufacturer, signed and sealed by Mark A. Sawicki, P.E.
(Submitted under NOA No. 14-0822.06)

B. TESTS

1. Test report on Tensile Test per ASTM E8-08 of stainless steel, prepared by Hurricane Engineering, Inc, Test Report No. **HETI-11-T112**, dated 05/10/11, signed and sealed by Rafael E. Droz-Seda, P.E.
(Submitted under NOA No. 11-0211.06)
2. Test reports on: 1) Uniform Static Air Pressure Test, Loading per FBC, TAS 202-94
2) Large Missile Impact Test per FBC, TAS 201-94
3) Cyclic Wind Pressure Loading per FBC, TAS 203-94
4) Forced Entry Test, per FBC 2411 3.2.1, TAS 202-94
5) Tensile Test per ASTM E8
along with marked-up drawings and installation diagram of a Series 635 rolling fire door, prepared by Architectural Testing, Inc, Test Report No. **89469.01-109-18**, dated 05/26/09, with Revision 1 dated 10/14/09, signed and sealed by Michael D. Stremmel, P.E.
(Submitted under NOA No. 09-0826.06)
3. Test report on Salt Spray (Fog) Test per ASTM B-117 of G30, G40 and G90 galvanized steel samples, prepared by Environmental Testing Laboratory, Inc, Test Report No. **ETL-9100550287**, dated 03/13/06 and signed by Brady Richard.
(Submitted under NOA No. 05-1003.19)
4. Test report on Surface Burning Characteristics per ASTM E84 of slats insulated with 2lb polyurethane foam, prepared by Intertek, Test Report No. **3061869-001rl**, dated 07/13/04 and signed by J. Tanner.
(Submitted under NOA No. 05-1003.21)
5. Test report on Ignition Properties per ASTM D1929 of polyurethane foam insulation, prepared by Omega Point Laboratories, Test Report No. **17042-120730**, dated 09/12/04 and signed and sealed by W.E. Fifth, P.E.
(Submitted under NOA No. 05-1003.21)


Manuel Pérez, P.E.
Product Control Examiner
NOA No. 23-1129.07
Expiration Date: December 02, 2024
Approval Date: March 07, 2024

Overhead Door Corporation

NOTICE OF ACCEPTANCE: EVIDENCE SUBMITTED

1. EVIDENCE SUBMITTED UNDER PREVIOUS NOA's (CONTINUED)

C. CALCULATIONS

1. Wall fastener calculations prepared by manufacturer, dated 08/21/09, signed and sealed by LeRoy G. Krupke, P.E.
(Submitted under NOA No. 09-0826.06)

D. QUALITY ASSURANCE

1. Miami-Dade Department of Regulatory and Economic Resources (RER)

E. MATERIAL CERTIFICATIONS


1. None.

F. STATEMENTS

1. Statement letter of conformance, complying with **FBC 7^h Edition (2020)** and manufacturer's statement that the product remains unchanged from the existing drawings, dated November 10, 2020, issued by manufacturer, signed and sealed by David L. Monsour, P.E.
(Submitted under NOA No. 20-1130.10)
2. Statement letter of conformance, complying with **FBC 2007** and of no financial interest, prepared by manufacturer, dated 08/21/09, signed and sealed by LeRoy G. Krupke, P.E.
(Submitted under NOA No. 09-0826.06)

G. OTHERS

1. Notice of Acceptance No. **18-1217.10**, issued to Overhead Door Corporation, for their Series 635 Steel Rolling Door up to 14'-0" Wide, approved on 02/07/19 and expiring on 12/02/24.


Manuel Pérez, P.E.
Product Control Examiner
NOA No. 23-1129.07
Expiration Date: December 02, 2024
Approval Date: March 07, 2024

Overhead Door Corporation

NOTICE OF ACCEPTANCE: EVIDENCE SUBMITTED

2. NEW EVIDENCE SUBMITTED

A. DRAWINGS

1. None.

B. TESTS

1. None.

C. CALCULATIONS

1. None.

D. QUALITY ASSURANCE

1. Miami-Dade Department of Regulatory and Economic Resources (RER)

E. MATERIAL CERTIFICATIONS


1. None.

F. STATEMENTS

1. Statement letter of conformance, complying with **FBC 8th Edition (2023)** and of no financial interest, dated February 12, 2024, issued by manufacturer, signed and sealed by Dor Gamliel, P.E.

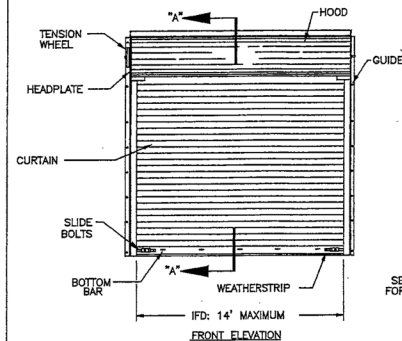
G. OTHERS

1. Notice of Acceptance No. **20-1130.10**, issued to Overhead Door Corporation, for their Series 635 Steel Rolling Door up to 14'-0" Wide, approved on 01/28/21 and expiring on 12/02/24.


Manuel Pérez, P.E.
Product Control Examiner
NOA No. 23-1129.07
Expiration Date: December 02, 2024
Approval Date: March 07, 2024

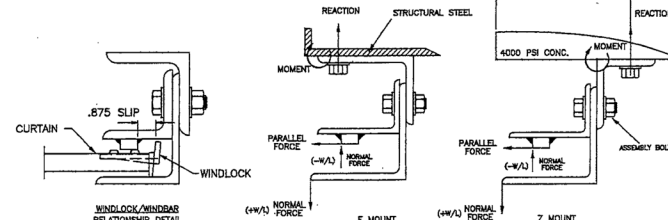
NOTES

1. (-W/L) = NEGATIVE WINDLOAD
(+W/L) = POSITIVE WINDLOAD
USE MIN 60XX ELECTRODE
2. WALL ANGLES MAY BE WELDED TO STEEL JAMB.
SEE SHEET 2 FOR WELD DETAIL
3. RATED DESIGN LOAD ± 65 PSF.
4. CURTAIN MATERIAL: ASTM A-653 (30KSI MIN YIELD) OR
SS 304 (42KSI MIN YIELD).
GUIDE MATERIAL: ASTM A-36
5. CURTAIN MATERIAL SHALL BE GALVANIZED ACCORDING
TO ASTM A-653 TO G40 (MINIMUM).
6. THE DOOR MUST BE INSTALLED WITH THE TENSION WHEEL
FACING THE INSIDE OF THE BUILDING.
7. SLIDE BOLTS MUST BE ENGAGED AND CHAIN MUST BE
HOOKED WHEN HURRICANE WINDS ARE ANNOUNCED
8. WINDLOCK MATERIAL: LOW CARBON CAST STEEL, GRADE 70-46
(485-250) PER ASTM A27. MIN TENSILE 70-KSI MIN YIELD
36-KSI. MIN ELONG 22%
9. WINDLOCKS ATTACHED TO EACH SLAT (CONTINUOUS)
10. RIVET SPECIFICATIONS:
1/4" DIAMETER RIVET, MINIMUM 1006 LOW-CARBON STEEL.
11. OPERATING (ROLL-UP) MECHANISM IS NOT INCLUDED IN THIS
APPROVAL IT MUST BE CERTIFIED BY AN INDEPENDENT
TESTING AGENCY, IF REQUIRED.



SECTION "A-A"
SEE DETAIL "D" FOR BOTTOM BAR

HOT ROLLED ANGLES

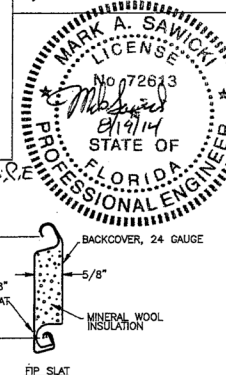


REVISIONS				
REV	DESCRIPTION	DATE	APPROVAL	
001636	D REV PER ER	7/10/12	MS	
002235	E REV PER ER	7/18/13	MS	
002232	F REV PER ER	8/26/13	MS	

JAMB LOAD SUMMARY TABLE		
LBS/FT DOOR HEIGHT	(E-MOUNT) LOADS	(Z-MOUNT) LOADS
REACTION	3442	5012
NORMAL	455	455
PARALLEL	1003	1003

FASTENER SUMMARY TABLE			
	ASSEMBLY BOLT	WALL BOLT STEEL JAMB	WALL BOLT CONCRETE JAMB
F-265	5/8" GRADE 5, 18" O.C.	1/2" GRADE 5, 12" O.C.	5/8" 4" EMB POWERS WEDGE BOLT, 5/8" 4" EMB HLT, 5/8" 4" EMB BOLT 3" O.C.

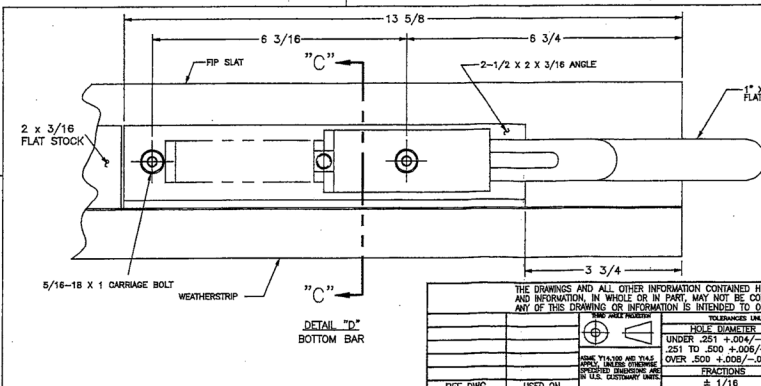
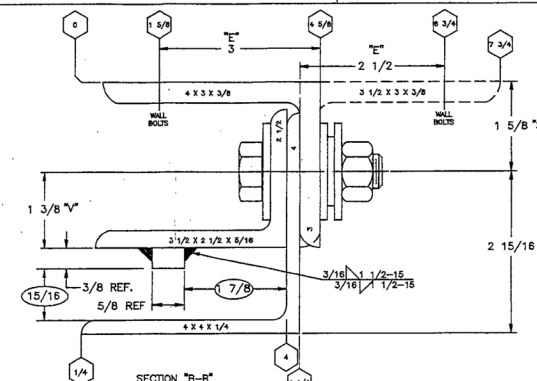
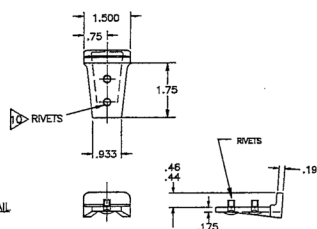
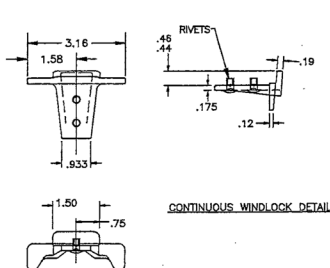
* 4000 PSI MINIMUM AND 6" EDGE DISTANCE FOR ANCHORS
NOTE: FOR DETAILS ON WELDING GUIDES TO STEEL JAMBS SEE SHEET 2.



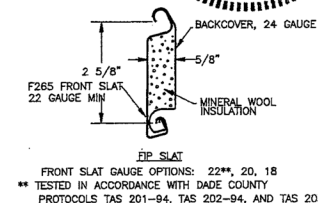
PRODUCT REVISED
as complying with the Florida Building Code
NOA-No. **20-1130.10**
Expiration Date **12/02/2024**
By *[Signature]*
Miami-Dade Product Control

PRODUCT RENEWED
as complying with the Florida Building Code
Acceptance No. **14-0822.06**
Expiration Date **12/12/2019**
By *[Signature]*
Miami-Dade Product Control

OVERHEAD DOOR CORPORATION
2501 SOUTH STATE HWY 121 BUSINESS
LEWISVILLE, TX 75067
LEROY C. KRUPKE, P.E. #36580
SERIES 855,
ROLLING FIRE DOOR
14" MIAMI-DADE COUNTY
D-308232
SCALE: NONE SHEET 1 OF 2



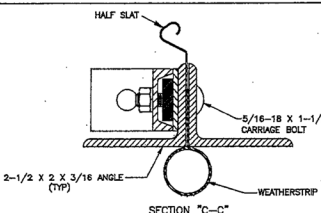
Mark A. Sawicki, P.E.
FLPE 72613



FRONT SLAT GAUGE OPTIONS: 22**, 20, 18
** TESTED IN ACCORDANCE WITH DADE COUNTY
PROTOCOLS TAS 201-94, TAS 202-94, AND TAS 203-94

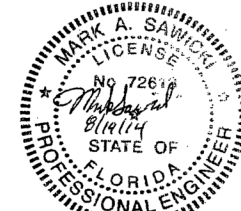
THE DRAWINGS AND ALL OTHER INFORMATION CONTAINED HEREIN ARE THE CONFIDENTIAL AND PROPRIETARY PROPERTY OF OVERHEAD DOOR CORPORATION AND ITS AFFILIATED COMPANIES. THIS DRAWING AND INFORMATION, IN WHOLE OR IN PART, MAY NOT BE COPIED IN ANY MANNER OR DISCLOSED TO ANYONE WITHOUT THE PRIOR WRITTEN CONSENT OF OVERHEAD DOOR CORPORATION. NO DISCLOSURE OF ANY OF THIS DRAWING OR INFORMATION IS INTENDED TO OPERATE AS A LICENSE OR AUTHORIZATION TO USE IT FOR ANY PURPOSE WITHOUT THE SPECIFIC WRITTEN CONSENT OF OVERHEAD DOOR CORPORATION.									
REF DWG	USED ON	DATE	BY	CHKD	APP'D	DATE	BY	CHKD	APP'D

PRODUCT REVISED
As complying with the Florida Building Code
NOA-No. **23-1129.07**
Expiration Date: **12/02/2024**
By: *[Signature]*
Miami-Dade Product Control

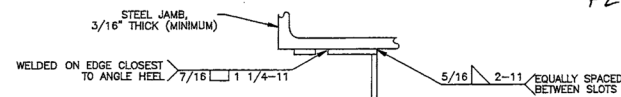


NOTES

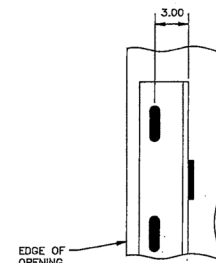
1. REFER TO DRAWING 308672-0001 FOR TAG DETAILS.
2. FASTENER FOR TAG IS P/N 080276-1004(STEEL DRIVE SCREW). TAG WILL BE MOUNTED IN THE MIDDLE OF THE BOTTOM BAR.



Mark A. Sawicki, P.E.
FL PE 72613



TOP VIEW



FRONT VIEW
OF WALL ANGLE


DETAILS FOR WELDING "E" GUIDES TO STEEL JAMBS

PRODUCT REVISED
As complying with the Florida
Building Code
NOA-No. **23-1129.07**
Expiration Date: **12/02/2024**
By: *Manuel Jara*
Miami-Dade Product Control

PRODUCT REVISED
as complying with the Florida
Building Code
NOA-No. **20-1130.10**
Expiration Date **12/02/2024**
By: *[Signature]*
Miami-Dade Product Control

PRODUCT RENEWED
as complying with the Florida
Building Code
Acceptance No **14-0822.06**
Expiration Date **12/21/2019**
By: *[Signature]*
Miami-Dade Product Control

OVERHEAD DOOR CORPORATION
2501 SOUTH STATE HWY 121 BUSINESS
LEWISVILLE, TX 75067
LEROY G. KRUPKE, P.E. #36580

THE DRAWINGS AND ALL OTHER INFORMATION CONTAINED HEREIN ARE THE CONFIDENTIAL AND PROPRIETARY PROPERTY OF OVERHEAD DOOR CORPORATION AND ITS AFFILIATED COMPANIES. THIS DRAWING AND INFORMATION, IN WHOLE OR IN PART, MAY NOT BE COPIED IN ANY MANNER OR DISCLOSED TO ANYONE WITHOUT THE PRIOR WRITTEN CONSENT OF OVERHEAD DOOR CORPORATION. NO DISCLOSURE OF ANY OF THIS DRAWING OR INFORMATION IS INTENDED TO OPERATE AS A LICENSE OR AUTHORIZATION TO USE IT FOR ANY PURPOSE WITHOUT THE SPECIFIC WRITTEN CONSENT OF OVERHEAD DOOR CORPORATION.										
	TOLERANCES UNLESS OTHERWISE SPECIFIED				FINISH		The Company, The Original		REVISIONS	
	HOLE DIMENSIONS				WHOLE NUMBERS: ± .25		LEWISVILLE, TEXAS		DATE	
	UNDER .251 +.004/- .003				X ± .1		OWNER: R D WARNER		2/26/09	
	.251 TO .500 +.006/- .003				X ± .03		DRAWN BY: M. SAWICKI		8/24/09	
	OVER .500 +.008/- .003				X ± .010		CHECKED BY: S. FOENG		9/23/09	
	FRACTIONS				X ± .12		UNIT OF MEASURE		N/A	
	± 1/16				ANGLES: ± .5°		N/A		N/A	
	DATE THIS SET WAS TYPED				DATE THIS SET WAS CHECKED		DATE THIS SET WAS APPROVED		DATE THIS SET WAS REVISIONED	
	REF DWG				USED ON		DATE THIS SET WAS REVISED		DATE THIS SET WAS REVISED	
	DATE THIS SET WAS TYPED				DATE THIS SET WAS CHECKED		DATE THIS SET WAS APPROVED		DATE THIS SET WAS REVISIONED	

SERIES 635
ROLLING FIRE DOOR
14' MIAMI-DADE COUNTY
D-308232

SCALE: NONE SHEET 2 OF 2