



DEPARTMENT OF REGULATORY AND ECONOMIC RESOURCES (RER)
BOARD AND CODE ADMINISTRATION DIVISION

NOTICE OF ACCEPTANCE (NOA)

MIAMI-DADE COUNTY
PRODUCT CONTROL SECTION
11805 SW 26 Street, Room 208
Miami, Florida 33175-2474
T (786) 315-2590 F (786) 315-2599
www.miamidade.gov/building

PCI Industries, LLC dba Pottorff
5101 Blue Mound Road
Fort Worth, TX 76106

SCOPE: This NOA is being issued under the applicable rules and regulations governing the use of construction materials. The documentation submitted has been reviewed and accepted by Miami-Dade County RER-Product Control Section to be used in Miami Dade County and other areas where allowed by the Authority Having Jurisdiction (AHJ).

This NOA shall not be valid after the expiration date stated below. The Miami-Dade County Product Control Section (In Miami Dade County) and/or the AHJ (in areas other than Miami Dade County) reserve the right to have this product or material tested for quality assurance purposes. If this product or material fails to perform in the accepted manner, the manufacturer will incur the expense of such testing and the AHJ may immediately revoke, modify, or suspend the use of such product or material within their jurisdiction. RER reserves the right to revoke this acceptance if it is determined by Miami-Dade County Product Control Section that this product or material fails to meet the requirements of the applicable building code.

This product is approved as described herein and has been designed to comply with the Florida Building Code, including the High Velocity Hurricane Zone.

DESCRIPTION: Model ECV- 345-MD Aluminum Louver

APPROVAL DOCUMENT: Drawing No. **ECV-345-MD NOA**, titled "ECV-345-MD", sheets 1 through 7 of 7, dated 05/05/20, with revision **3** dated 11/02/21, prepared by the manufacturer, signed and sealed by Wayne K. Helmila, P.E., bearing the Miami-Dade County Product Control Revision stamp with the Notice of Acceptance number and expiration date by the Miami-Dade County Product Control Section.

MISSILE IMPACT RATING: Large and Small Missile Impact Resistant

LABELING: A permanent label with the manufacturer's name or logo, manufacturing plant's city, state, model/ series, and the statement reading: "Miami-Dade County Product Control Approved", is to be located on each unit.

RENEWAL of this NOA shall be considered after a renewal application has been filed and there has been no change in the applicable building code negatively affecting the performance of this product.

TERMINATION of this NOA will occur after the expiration date or if there has been a revision or change in the materials, use, and/or manufacture of the product or process. Misuse of this NOA as an endorsement of any product, for sales, advertising or any other purposes shall automatically terminate this NOA. Failure to comply with any section of this NOA shall be cause for termination and removal of NOA.

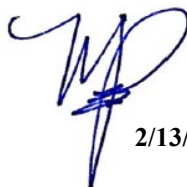
ADVERTISEMENT: The NOA number preceded by the words Miami-Dade County, Florida, and followed by the expiration date may be displayed in advertising literature. If any portion of the NOA is displayed, then it shall be done in its entirety.

INSPECTION: A copy of this entire NOA shall be provided to the user by the manufacturer or its distributors and shall be available for inspection at the job site at the request of the Building Official.

This NOA **revises NOA No. 21-1122.04** and consists of this page 1 and evidence pages E-1, E-2 and E-3, as well as approval document mentioned above.

The submitted documentation was reviewed by **Manuel Perez, P.E.**




2/13/24

NOA No. 23-1215.12
Expiration Date: July 23, 2025
Approval Date: February 22, 2024
Page 1

NOTICE OF ACCEPTANCE: EVIDENCE SUBMITTED

1. EVIDENCE SUBMITTED UNDER PREVIOUS NOA's

A. DRAWINGS

1. Manufacturer's die drawings and sections.
(Submitted under NOA No. 20-0526.08)
2. Drawing No. **ECV-345-MD NOA**, titled "ECV-345-MD", sheets 1 through 7 of 7, dated 05/05/20, with revision **3** dated 11/02/21, prepared by the manufacturer, signed and sealed by Wayne K. Helmila, P.E.
(Submitted under NOA No. 21-1122.04)

B. TESTS

1. Test reports on: 1) Uniform Static Air Pressure Test, Loading per FBC, TAS 202-94
2) Large Missile Impact Test per FBC, TAS 201-94
3) Cyclic Wind Pressure Loading per FBC, TAS 203-94
along with installation diagram of Model ECV-345-MD Aluminum Louvers, prepared by UL, LLC, Test Report No. **SV030902-20200224-A**, dated 03/16/20, signed and sealed by Alexis Spyrou, P.E.
(Submitted under NOA No. 20-0526.08)
2. Test Report on High Velocity Wind Driven Rain Resistance per AMCA 550-15 of a Model ECV-345 Vertical Aluminum Louver, prepared by Intertek, Test Report No. **K4423.01-801-44 R0**, dated 03/20/20, signed and sealed by Tyler Westerling, P.E.
(Submitted under NOA No. 20-0526.08)
3. Test Report on Wind Driven Rain Resistance per TAS 100(A)-95 of a Model ECV-345 Vertical Aluminum Louver, prepared by Intertek, Test Report No. **K4423.03-801-44 R0**, dated 04/13/20, signed and sealed by Tyler Westerling, P.E.
(Submitted under NOA No. 20-0526.081)

C. CALCULATIONS

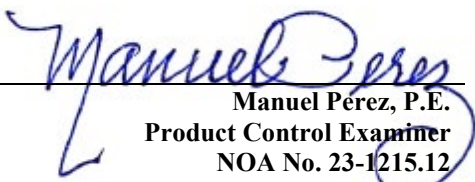
1. ECV-345-MD louver structural calculations dated 05/04/20, prepared by Rice Engineering, signed and sealed by Wayne K. Helmila, P.E.
(Submitted under NOA No. 20-0526.08)

D. QUALITY ASSURANCE

1. Miami-Dade Department of Regulatory and Economic Resources (RER)

E. MATERIAL CERTIFICATIONS

1. None.


Manuel Perez, P.E.
Product Control Examiner
NOA No. 23-1215.12
Expiration Date: July 23, 2025
Approval Date: February 22, 2024

NOTICE OF ACCEPTANCE: EVIDENCE SUBMITTED

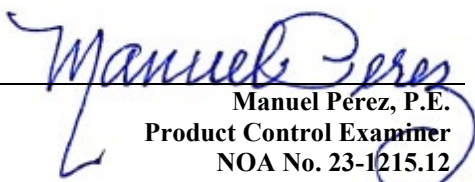
1. EVIDENCE SUBMITTED UNDER PREVIOUS NOA's (CONTINUED)

F. STATEMENTS

1. Statement letter of conformance, complying with **FBC 7th Edition (2020)**, dated 03/05/21, issued by Rice Engineering, signed and sealed by Wayne K. Helmila, P.E.
(Submitted under NOA No. 20-1222.07)
2. Statement letter of no financial interest, dated 10/20/20, issued by Rice Engineering, signed and sealed by Wayne K. Helmila, P.E.
(Submitted under NOA No. 20-1222.07)
3. Asset Purchase Agreement entered between **PCI Industries, Inc.** a California corporation (the Seller) and **PCI Industries, LLC**, a Delaware limited liability company (the Buyer), dated 10/22/21.
(Submitted under NOA No. 21-1122.04)
4. Statement letter as an official notification from **PCI Industries, Inc.** that all assets associated with the Pottorff model ECV-345-MD aluminum louver have been legally sold to **PCI Industries, LLC**, dated 11/17/21 and signed by Nathan Woodworth, Louver Development Manager.
(Submitted under NOA No. 21-1122.04)
5. Statement letter as a request from **PCI Industries, LLC** to issue a new Notice of Acceptance (NOA) for the Pottorff model ECV-345-MD aluminum louver, dated 11/17/21 and signed by Nathan Woodworth, Louver Development Manager.
(Submitted under NOA No. 21-1122.04)

G. OTHERS

1. Notice of Acceptance No. **20-1222.07**, issued to PCI Industries, LLC d/b/a Pottorff for their Model ECV - 345-MD Aluminum Louver, approved on 07/29/21 and expiring on 07/23/25.


Manuel Pérez, P.E.
Product Control Examiner
NOA No. 23-1215.12
Expiration Date: July 23, 2025
Approval Date: February 22, 2024

NOTICE OF ACCEPTANCE: EVIDENCE SUBMITTED

2. NEW EVIDENCE SUBMITTED

A. DRAWINGS

1. None.

B. TESTS

1. None.

C. CALCULATIONS

1. None.

D. QUALITY ASSURANCE

1. Miami-Dade Department of Regulatory and Economic Resources (RER)

E. MATERIAL CERTIFICATIONS

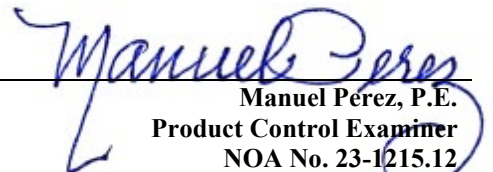
1. None.

F. STATEMENTS

1. Statement letter of conformance, complying with **FBC 8th Edition (2023)**, issued by Rice Engineering, dated 11/28/23, signed and sealed by Wayne K. Helmila, P.E.

G. OTHERS

1. Notice of Acceptance No. **21-1122.04**, issued to PCI Industries, LLC d/b/a Pottorff for their Model ECV - 345-MD Aluminum Louver, approved on 01/20/22 and expiring on 07/23/25.



Manuel Pérez, P.E.
Product Control Examiner
NOA No. 23-1215.12

Expiration Date: July 23, 2025
Approval Date: February 22, 2024

1:10 ENGINEERING PROJECTS\LOUVERS\ECV-345-MD NOA\Updated Design (Sep. 2019)

NOTES:

1. THIS NOA DRAWING INCLUDES INSTALLATION DETAILS TO ATTAIN MAXIMUM DESIGN PRESSURES OF ± 100 PSF AS TESTED IN ACCORDANCE WITH PROTOCOLS TAS 201 (LEVEL 'D', 50 FPS), TAS 202, TAS 203, TAS 100A, & AMCA 550 FOR USE WITHIN HIGH VELOCITY HURRICANE-AFFECTED ZONES DEFINED BY THE FLORIDA BUILDING CODE.
2. ALL VARIATIONS ARE LARGE MISSILE IMPACT RESISTANT.
3. UNITS OF MEASURE ARE FRACTIONAL INCHES UNLESS OTHERWISE SPECIFIED.
4. IT IS ASSUMED THAT THE LOUVER SYSTEMS DO NOT SUPPORT ANY LOADS TRANSFERRED FROM THE BUILDING CONDITION.
5. IT IS ASSUMED THAT THE BUILDING CONDITIONS ARE ADEQUATELY DESIGNED TO SUPPORT LOADS IMPARTED BY THE LOUVER SYSTEM.
6. TO PREVENT GALVANIC CORROSION, ELECTROCHEMICALLY DISSIMILAR MATERIALS IN CONTACT WITH ONE ANOTHER SHALL BE PROTECTED BY PAINT, GASKETING OR OTHER MEANS PER THE FLORIDA BUILDING CODE.
7. SINCE THE DESIGN MEETS THE PERFORMANCE STANDARDS OF TAS 100A AND AMCA 550, THE ROOM BEHIND THE LOUVER NEED NOT BE DESIGNED TO DRAIN WATER PENETRATION INTO THE ROOM, AND MAY HOUSE NON-WATER RESISTANT EQUIPMENT, COMPONENTS, OR SUPPLIES.
8. OTHER BUILDING CONDITIONS THAN THOSE DENOTED CAN BE UTILIZED IF ANALYZED AND APPROVED BY A PROFESSIONAL ENGINEER.
9. MULTI-SECTION HIGH LOUVER SYSTEMS ARE ALLOWABLE PROVIDED THE INDIVIDUAL SECTIONS ARE SUPPORTED PER THE DETAILS ON THIS DRAWING AND A SUITABLE SUPPORT STRUCTURE IS ANALYZED AND APPROVED BY A PROFESSIONAL ENGINEER.

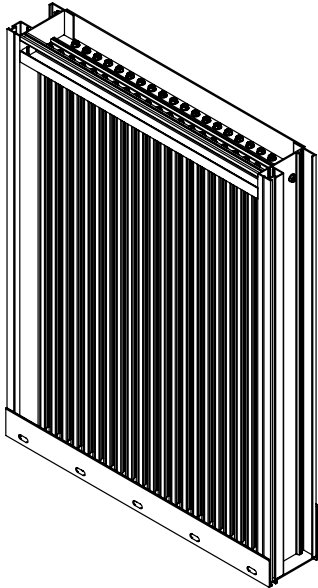


TABLE 1		
SINGLE SECTION SIZE LIMITATIONS		
MAX DESIGN PRESSURE	MIN (W X H)	MAX (W X H)
± 100 PSF	12" X 12"	60" X 96"

TABLE 2	
MULTIPLE SECTION SIZE LIMITATIONS (MAX DESIGN PRESSURE: ± 100 PSF)	
SINGLE SECTION HIGH - UNLIMITED WIDTH	SEE SHEET 5

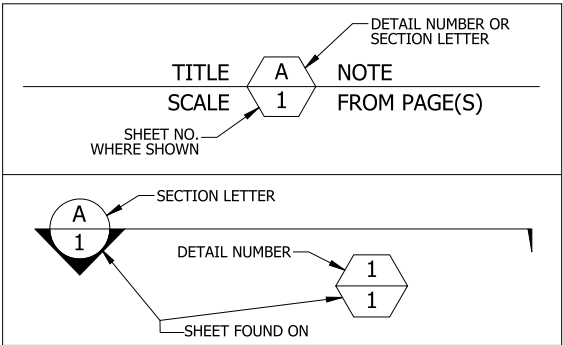


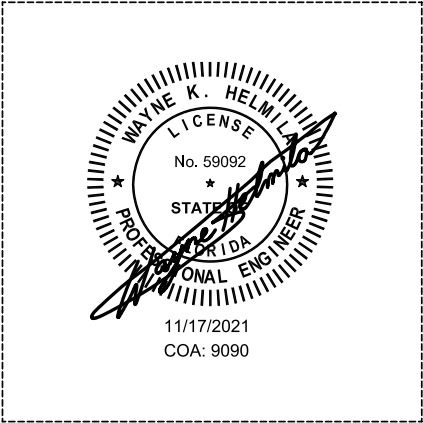
TABLE 3				
ANCHOR SCHEDULE				
SUBSTRATE	ANCHOR TYPE	MIN. EMBEDMENT	MIN. EDGE DISTANCE	MAX. SPACING
CONCRETE ($f_c \geq 2500$ PSI)	3/8" X 4" DEWALT SCREW-BOLT+ (F-3)	3 1/4"	1 1/2"	6"
GROUT-FILLED CMU ($f_m \geq 1500$ PSI)	3/8" X 4" DEWALT SCREW-BOLT+ (F-3)	3 1/4"	1 1/2"	4"
STEEL (MIN. 3/16" THICK WITH $F_y \geq 36$ KSI, OR MIN. 16 GA. WITH $F_y \geq 50$ KSI)	1/4" X 1" SELF-DRILLING SCREW (F-4)	FULL	1"	5"
WOOD (S.G. ≥ 0.4)	3/8" X 2 1/2" LAG BOLT WITH FLAT WASHER (F-5)	2 1/4"	1 1/2"	5"

PRODUCT REVISED
As complying with the Florida
Building Code
NOA-No. **23-1215.12**
Expiration Date: **07/23/2025**
By: *Manuel Perez*
Miami-Dade Product Control

PRODUCT REVISED
as complying with the Florida
Building Code
NOA-No. **21-1122.04**
Expiration Date **07/23/2025**
By: *Rice*
Miami-Dade Product Control

RICE
ENGINEERING
105 School Creek Trail
Luxemburg, WI 54217
Phone: (920) 617-1042
Fax: (920) 617-1100
www.rice-inc.com
Florida Firm No: F-01000005061
Certificate of Authorization: #9090
Wayne K. Helmli
Registration No: 59092

P.E. STAMP



3	UPDATED LABEL DETAIL	11/2/2021	NWW
2	UPDATED FOR NOA RENEWAL	3/11/2021	NWW
1	INITIAL RELEASE	5/5/2020	NWW
REV.	DESCRIPTION	DATE	DRAWN BY

UNLESS OTHERWISE SPECIFIED
DIMENSIONS ARE IN INCHES.
TOLERANCE UNLESS NOTED:
X.X ± 0.060
X.XX ± 0.030
X.XXX ± 0.010
ANGLE $\pm 1^\circ$
FRACTION $\pm 1/16$
MAX HOLE BREAKOUT:
15% OF MATERIAL THICKNESS

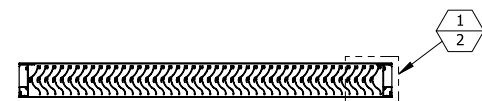
PCI INDUSTRIES DOING BUSINESS AS

POTTORFF

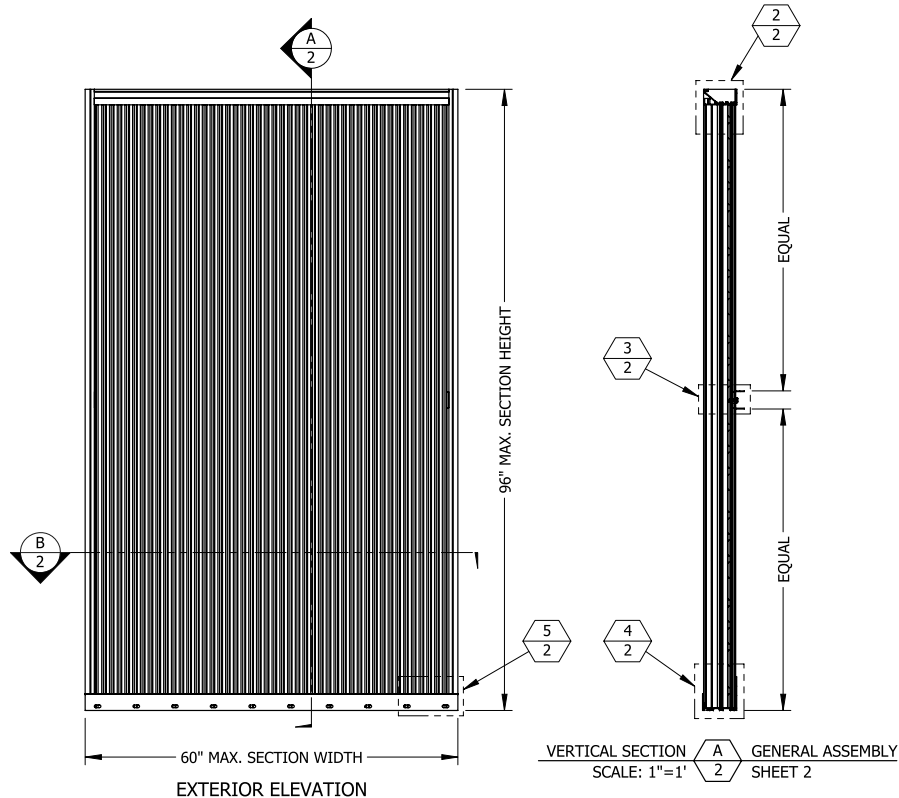
THIRD ANGLE PROJECTION

5101 Blue Mound Road
Fort Worth, Texas 76106
Phone: 817-509-2300
Fax: 817-831-3110

DRAWING DESCR:			
COVER SHEET			
PROJECT: ECV-345-MD			
PROJ. MGR.:		DRAWN BY: NWW / JG	
DATE: 5/5/2020	CHK'D BY:	DRAWING NUMBER	
SHEET: 1 of 7	SCALE: NONE	ECV-345-MD NOA	

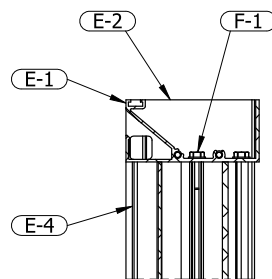


HORIZONTAL SECTION $\frac{B}{2}$ GENERAL ASSEMBLY
SCALE: 1"=1'

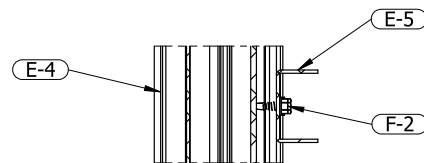


PRODUCT REVISED
As complying with the Florida
Building Code
NOA-No. **23-1215.12**
Expiration Date: **07/23/2025**
By: *Manuel Potos*
Miami-Dade Product Control

3	UPDATED LABEL DETAIL	11/2/2021	NWW
2	UPDATED FOR NOA RENEWAL	3/11/2021	NWW
1	INITIAL RELEASE	5/5/2020	NWW
REV.	DESCRIPTION	DATE	DRAWN BY

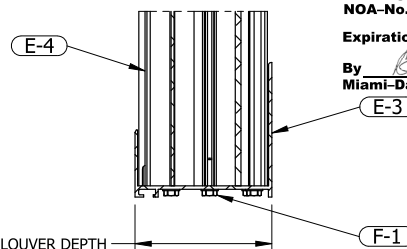


SECTION DETAIL $\frac{2}{2}$ FRAME HEAD
SCALE: 1" = 1'-0"



SECTION DETAIL $\frac{3}{2}$ STIFFENER
SCALE: 1" = 1'-0"

STIFFENER (E-5) AND ASSOCIATED FASTENERS (F-2)
OMITTED IF SECTION HEIGHT $\leq 48"$



SECTION DETAIL $\frac{4}{2}$ FRAME SILL
SCALE: 1" = 1'-0"

UNLESS OTHERWISE SPECIFIED
DIMENSIONS ARE IN INCHES.

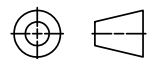
TOLERANCE UNLESS NOTED:
X.X ± 0.060
X.XX ± 0.030
X.XXX ± 0.010
ANGLE $\pm 1^\circ$
FRACTION $\pm 1/16$

MAX HOLE BREAKOUT:
15% OF MATERIAL THICKNESS

PCI INDUSTRIES DOING BUSINESS AS

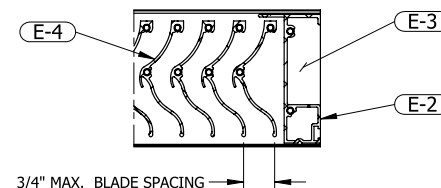
POTTORFF

THIRD ANGLE PROJECTION

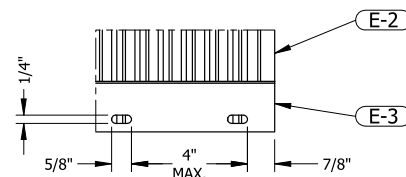


5101 Blue Mound Road
Fort Worth, Texas 76106
Phone: 817-509-2300
Fax: 817-831-3110

GENERAL LOUVER ASSEMBLY

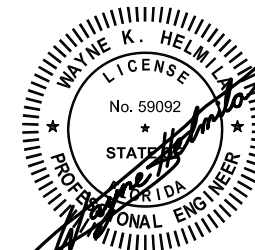


SECTION DETAIL $\frac{1}{2}$ FRAME JAMB
SCALE: 1" = 1'-0"



ELEVATION DETAIL $\frac{5}{2}$ FRAME SILL
SCALE: 1" = 1'-0"

P.E. STAMP



11/17/2021
COA: 9090

RICE
ENGINEERING
105 School Creek Trail
Luxemburg, WI 54217
Phone: (920) 617-1042
Fax: (920) 617-1100
www.rice-inc.com
Florida Firm No: F-01000005061
Certificate of Authorization: #9090
Wayne K. Helmli
Registration No: 59092

DRAWING DESCR:
GENERAL LOUVER ASSEMBLY

PROJECT: ECV-345-MD

PROJ. MGR.:

DATE: 5/5/2020

SHEET: 2 of 7

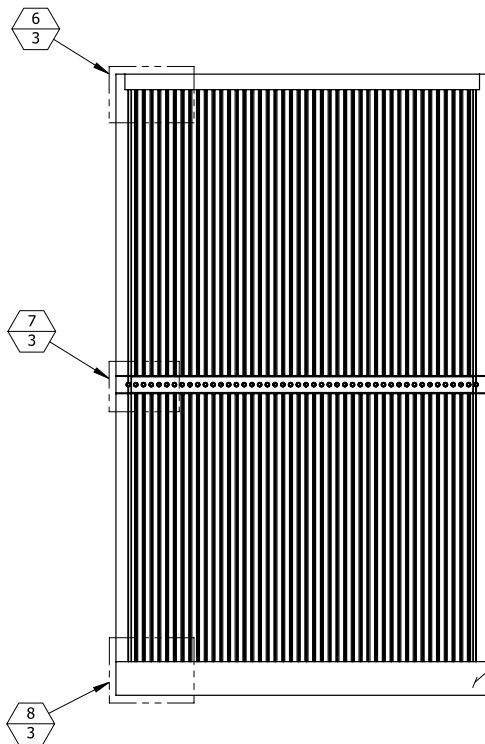
CHK'D BY:

SCALE: 1"=1'-0"

DRAWN BY: NWW / JG

DRAWING NUMBER

ECV-345-MD NOA

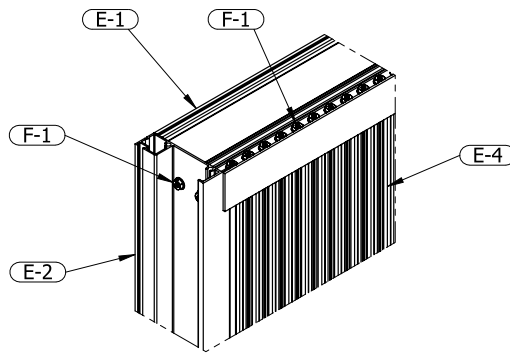
GENERAL LOUVER ASSEMBLY

INTERIOR ELEVATION

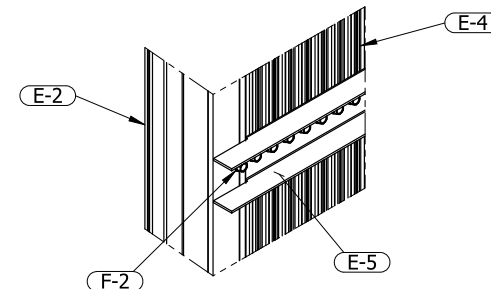
ENGRAVED LABEL DETAIL

PCI Industries LLC d/b/a
POTTORFF
 Ft Worth TX
 SO# 123456

Miami Dade County
 Product Control
 Approved

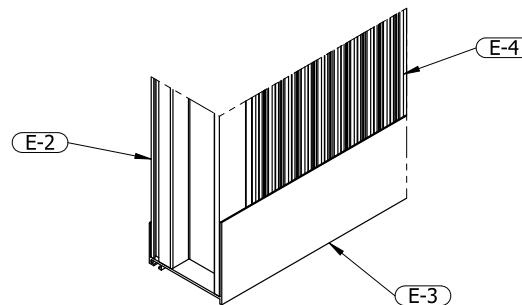


ASSEMBLY DETAIL $\frac{6}{3}$ UPPER CORNER
 SCALE: 3"=1' SHEET 3

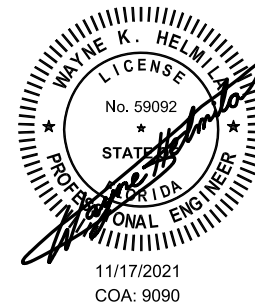


ASSEMBLY DETAIL $\frac{7}{3}$ STIFFENER
 SCALE: 3"=1' SHEET 3

STIFFENER (E-5) AND ASSOCIATED FASTENERS (F-2)
 OMITTED IF SECTION HEIGHT \leq 48"



ASSEMBLY DETAIL $\frac{8}{3}$ LOWER CORNER
 SCALE: 3"=1' SHEET 3

P.E. STAMP

PRODUCT REVISED
 As complying with the Florida
 Building Code
 NOA-No. **23-1215.12**
 Expiration Date: **07/23/2025**
 By: *Manuel Ferro*
 Miami-Dade Product Control

PRODUCT REVISED
 as complying with the Florida
 Building Code
 NOA-No. **21-1122.04**
 Expiration Date **07/23/2025**
 By: *Manuel Ferro*
 Miami-Dade Product Control

RICE**ENGINEERING**

105 School Creek Trail
 Luxemburg, WI 54217
 Phone: (920) 617-1042
 Fax: (920) 617-1100
 www.rice-inc.com

Florida Firm No: F-0100005061
 Certificate of Authorization: #9090
 Wayne K. Helmli
 Registration No: 59092

UNLESS OTHERWISE SPECIFIED
 DIMENSIONS ARE IN INCHES.

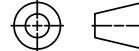
TOLERANCE UNLESS NOTED:
 X.X ± 0.060
 X.XX ± 0.030
 X.XXX ± 0.010
 ANGLE $\pm 1^\circ$
 FRACTION $\pm 1/16$

MAX HOLE BREAKOUT:
 15% OF MATERIAL THICKNESS

PCI INDUSTRIES DOING BUSINESS AS

POTTORFF

THIRD ANGLE PROJECTION



5101 Blue Mound Road
 Fort Worth, Texas 76106
 Phone: 817-509-2300
 Fax: 817-831-3110

DRAWING DESCR:

GENERAL LOUVER ASSEMBLY

PROJECT: ECV-345-MD

PROJ. MGR.:

DATE: 5/5/2020

SHEET: 3 of 7

CHK'D BY:

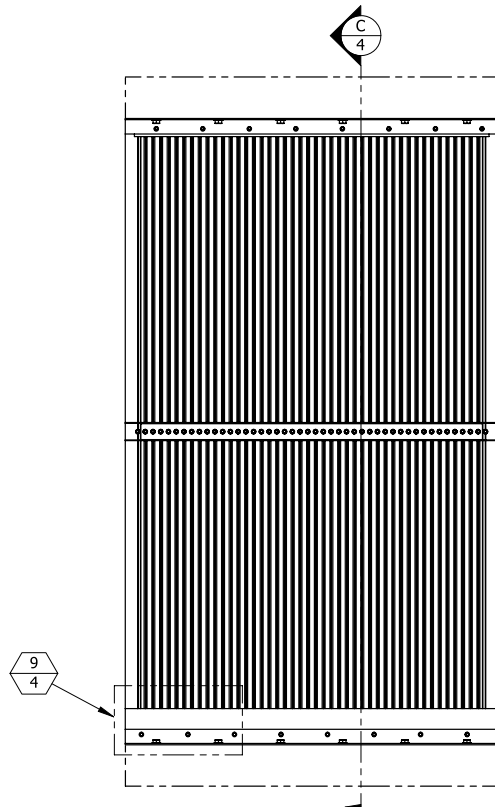
SCALE: 1"=1'-0"

DRAWN BY: NWW / JG

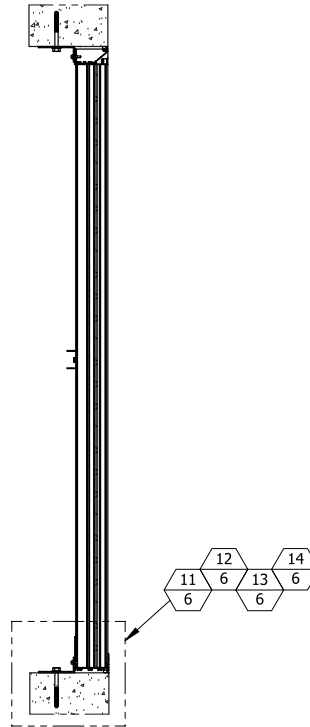
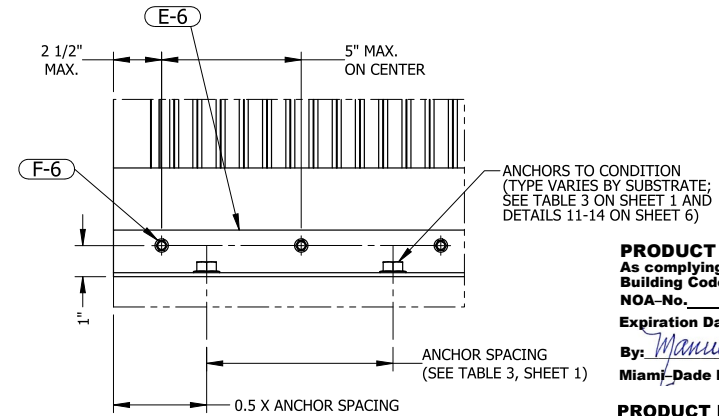
DRAWING NUMBER

ECV-345-MD NOA

3	UPDATED LABEL DETAIL	11/2/2021	NWW
2	UPDATED FOR NOA RENEWAL	3/11/2021	NWW
1	INITIAL RELEASE	5/5/2020	NWW
REV.	DESCRIPTION	DATE	DRAWN BY

SINGLE-SECTION INSTALLATION

INTERIOR ELEVATION

VERTICAL SECTION **C 4** LOUVER INSTALLATION
1" = 1'-0" SHEETS 4 & 5ELEVATION DETAIL **9 4** TOP & BTM ATTACHMENT
3" = 1'-0" SHEETS 4 & 5

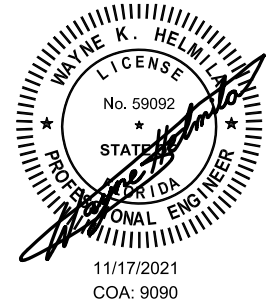
ANCHORS TO CONDITION
(TYPE VARIES BY SUBSTRATE;
SEE TABLE 3 ON SHEET 1 AND
DETAILS 11-14 ON SHEET 6)

PRODUCT REVISED
As complying with the Florida
Building Code
NOA-No. **23-1215.12**
Expiration Date: **07/23/2025**

By: *Manuel Perez*
Miami-Dade Product Control

PRODUCT REVISED
as complying with the Florida
Building Code
NOA-No. **21-1122.04**

Expiration Date: **07/23/2025**
By: *Manuel Perez*
Miami-Dade Product Control

P.E. STAMP

11/17/2021
COA: 9090

RICE**ENGINEERING**

105 School Creek Trail
Luxemburg, WI 54217
Phone: (920) 617-1042
Fax: (920) 617-1100
www.rice-inc.com

Florida Firm No: F-01000005061
Certificate of Authorization: #9090
Wayne K. Helm
Registration No: 59092

UNLESS OTHERWISE SPECIFIED
DIMENSIONS ARE IN INCHES.

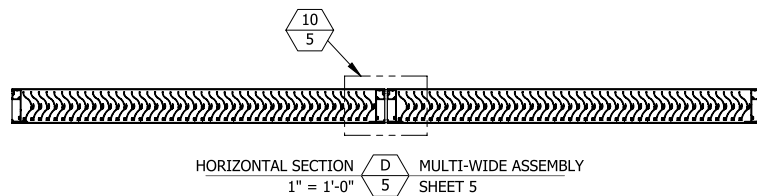
TOLERANCE UNLESS NOTED:
X.X ±0.060
X.XX ±0.030
X.XXX ±0.010
ANGLE ±1°
FRACTION ±1/16

MAX HOLE BREAKOUT:
15% OF MATERIAL THICKNESS

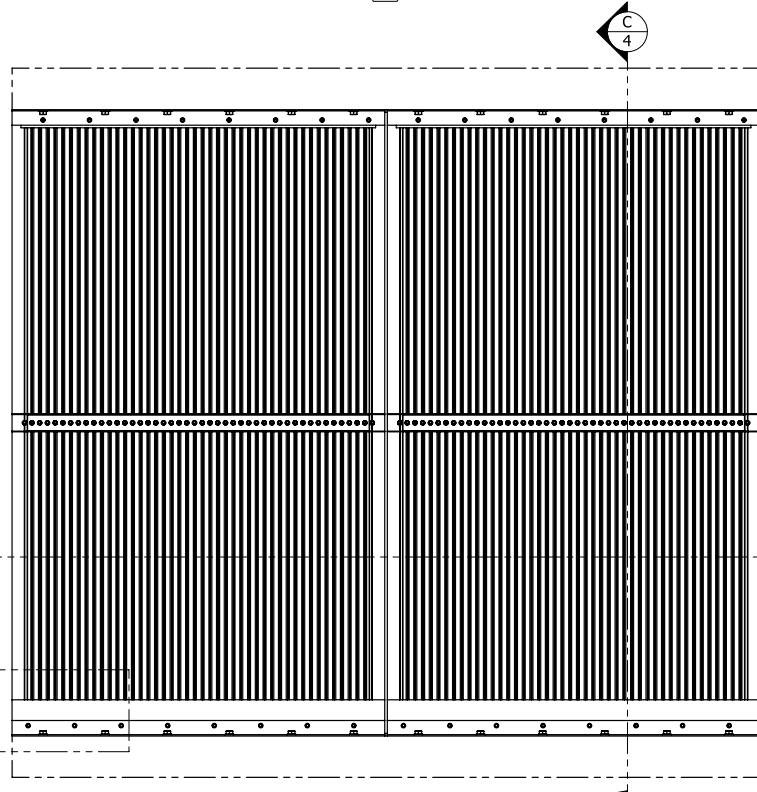
PCI INDUSTRIES DOING BUSINESS AS

POTTORFF</

1: NO ENGINEERING PROJECTS/LOUVERS ECV-345-MD NOA/Updated Design (Sep. 2019)

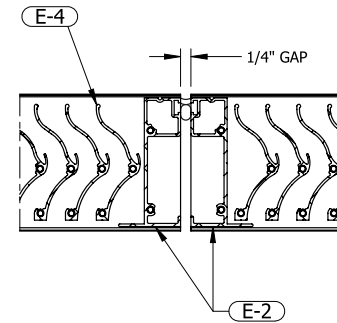


HORIZONTAL SECTION
1" = 1'-0" D
5 MULTI-WIDE ASSEMBLY
SHEET 5



INTERIOR ELEVATION
QUANTITY OF SECTIONS WIDE IS UNLIMITED

MULTI-SECTION WIDE INSTALLATION



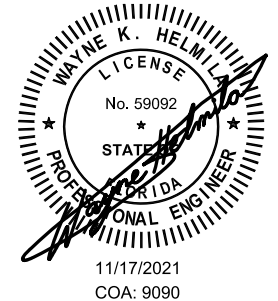
SECTION DETAIL 10
5 VERTICAL MULLION
4" = 1'-0" SHEET 5

QUANTITY OF SECTIONS WIDE IS UNLIMITED

PRODUCT REVISED
As complying with the Florida
Building Code
NOA-No. **23-1215.12**
Expiration Date: **07/23/2025**
By: *Manuel Perez*
Miami-Dade Product Control

PRODUCT REVISED
as complying with the Florida
Building Code
NOA-No. **21-1122.04**
Expiration Date **07/23/2025**
By: *W. Torres*
Miami-Dade Product Control

P.E. STAMP



RICE

ENGINEERING
105 School Creek Trail
Luxemburg, WI 54217
Phone: (920) 617-1042
Fax: (920) 617-1100
www.rice-inc.com
Florida Firm No: F-01000005061
Certificate of Authorization: #9090
Wayne K. Helmli
Registration No: 59092

UNLESS OTHERWISE SPECIFIED
DIMENSIONS ARE IN INCHES.

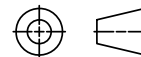
TOLERANCE UNLESS NOTED:
X.X ±0.060
X.XX ±0.030
X.XXX ±0.010
ANGLE ±1°
FRACTION ±1/16

MAX HOLE BREAKOUT:
15% OF MATERIAL THICKNESS

PCI INDUSTRIES DOING BUSINESS AS

POTTORFF

THIRD ANGLE PROJECTION



5101 Blue Mound Road
Fort Worth, Texas 76106
Phone: 817-509-2300
Fax: 817-831-3110

DRAWING DESCR:
MULTI-SECTION WIDE INSTALLATION

PROJECT: ECV-345-MD

PROJ. MGR.:

DATE: 5/5/2020

SHEET: 5 of 7

CHK'D BY:

SCALE: 1"=1'-0"

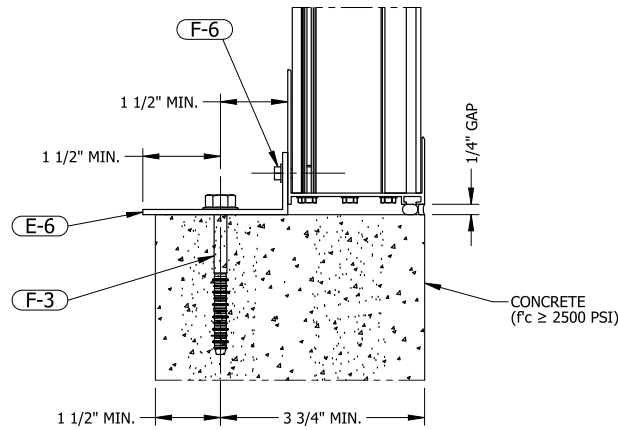
DRAWN BY: NWW / JG

DRAWING NUMBER

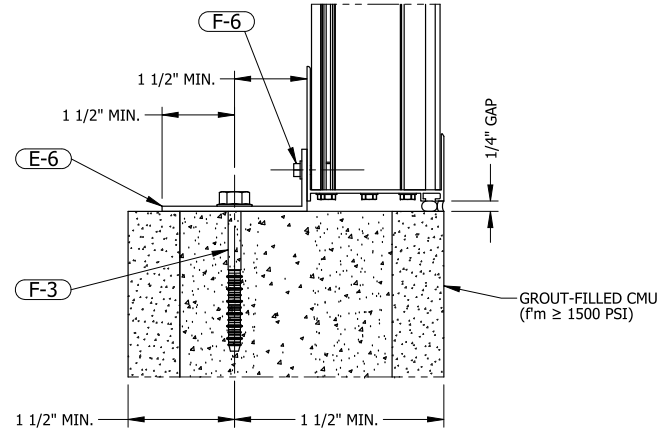
ECV-345-MD NOA

3	UPDATED LABEL DETAIL	11/2/2021	NWW
2	UPDATED FOR NOA RENEWAL	3/11/2021	NWW
1	INITIAL RELEASE	5/5/2020	NWW
REV.	DESCRIPTION	DATE	DRAWN BY

INSTALLATION DETAILS

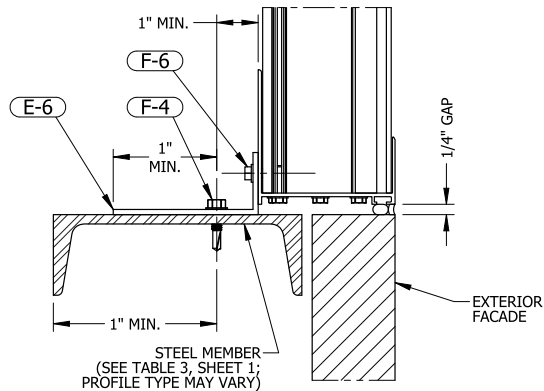


SECTION DETAIL 11
4" = 1'-0" 6 SHEET 4

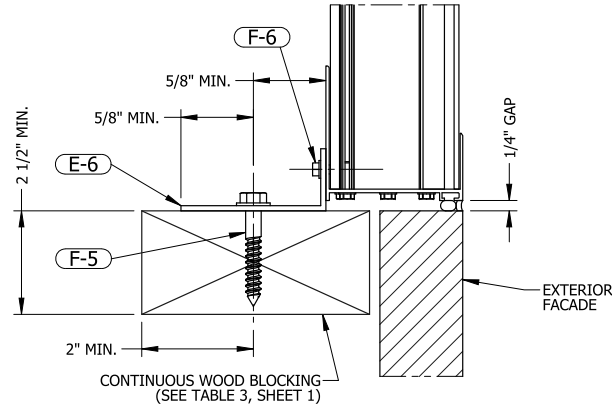


SECTION DETAIL 12
4" = 1'-0" 6 SHEET 4

ANCHOR CENTERS MAY BE LOCATED NO CLOSER THAN 1-1/4" TO A VERTICAL (HEAD) JOINT IN THE MASONRY.



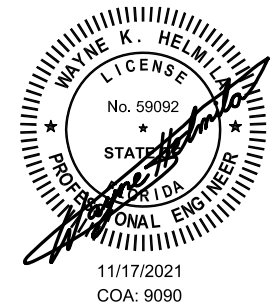
SECTION DETAIL 13
4" = 1'-0" 6 SHEET 4



SECTION DETAIL 14
4" = 1'-0" 6 SHEET 4

RICE
ENGINEERING
105 School Creek Trail
Luxemburg, WI 54217
Phone: (920) 617-1042
Fax: (920) 617-1100
www.rice-inc.com
Florida Firm No: F-01000005061
Certificate of Authorization: #9090
Wayne K. Helmila
Registration No: 59092

P.E. STAMP



UNLESS OTHERWISE SPECIFIED
DIMENSIONS ARE IN INCHES.
TOLERANCE UNLESS NOTED:
X.X ±0.060
X.XX ±0.030
X.XXX ±0.010
ANGLE ±1°
FRACTION ±1/16
MAX HOLE BREAKOUT:
15% OF MATERIAL THICKNESS

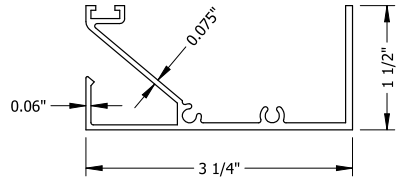
PCI INDUSTRIES DOING BUSINESS AS
POTTORFF
THIRD ANGLE PROJECTION
5101 Blue Mound Road
Fort Worth, Texas 76106
Phone: 817-509-2300
Fax: 817-831-3110

DRAWING DESCR: INSTALLATION DETAILS			
PROJECT: ECV-345-MD			
PROJ. MGR.:		DRAWN BY: NWW / JG	
DATE: 5/5/2020	CHK'D BY:	DRAWING NUMBER	
SHEET: 6 of 7	SCALE: AS NOTED	ECV-345-MD NOA	

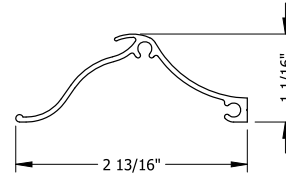
3	UPDATED LABEL DETAIL	11/2/2021	NWW
2	UPDATED FOR NOA RENEWAL	3/11/2021	NWW
1	INITIAL RELEASE	5/5/2020	NWW
REV.	DESCRIPTION	DATE	DRAWN BY

1:10 ENGINEERING PROJECTS/LOUVERS/ECV-345-MD NOA(Updated Design (Sep. 2019))

PART NO: E-1
PART NAME: FRAME HEAD
MATERIAL: 0.085" THICK 6063-T6
EXTRUDED ALUMINUM

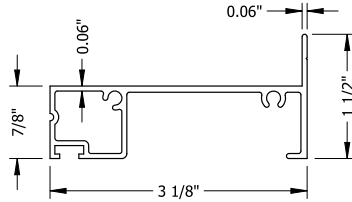


PART NO: E-4
PART NAME: BLADE
MATERIAL: 0.06" THICK 6063-T5
EXTRUDED ALUMINUM

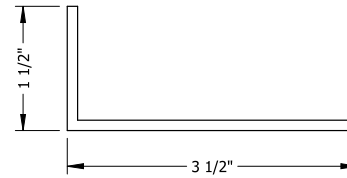


BILL OF MATERIALS

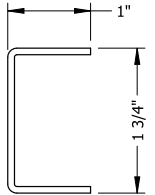
PART NO: E-2
PART NAME: FRAME JAMB
MATERIAL: 0.075" THICK 6063-T6
EXTRUDED ALUMINUM



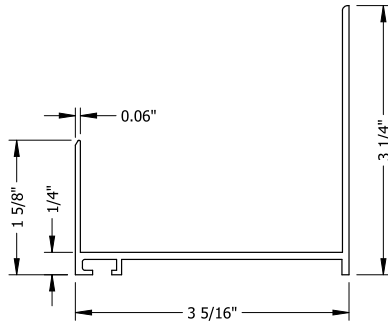
PART NO: E-6
PART NAME: CONTINUOUS ANGLE
MATERIAL: 0.125" THICK 6063-T6
EXTRUDED ALUMINUM



PART NO: E-5
PART NAME: STIFFENER
MATERIAL: 0.08" THICK 5052-H32
FORMED ALUMINUM



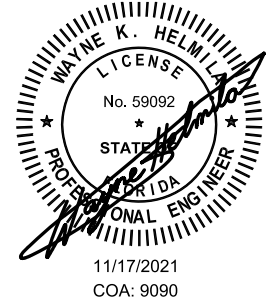
PART NO: E-3
PART NAME: FRAME SILL
MATERIAL: 0.085" THICK 6063-T6
EXTRUDED ALUMINUM



PRODUCT REVISED
As complying with the Florida
Building Code
NOA-No. **23-1215.12**
Expiration Date: **07/23/2025**
By: *Manuel Serr*
Miami-Dade Product Control

PRODUCT REVISED
as complying with the Florida
Building Code
NOA-No. **21-1122.04**
Expiration Date **07/23/2025**
By: *R. Hines*
Miami-Dade Product Control

P.E. STAMP



MISCELLANEOUS FASTENERS

PART NO.	DESCRIPTION
F-1	#10-14 X 1" LONG, HWH, 410 SST, NEEDLE POINT SELF-TAPPING SCREW
F-2	#12-14 X 3/4" LONG, HWH, 410 SST, TEK SELF-DRILLING SCREW
F-3	3/8" X 4" DEWALT SCREW-BOLT+ SCREW ANCHOR, GALV. FINISH
F-4	1/4-14 X 1" LONG SELF-DRILLING SCREW, 300-SERIES SST
F-5	3/8" X 2 1/2" LONG LAG BOLT AND FLAT WASHER, 300-SERIES SST
F-6	#12-14 X 3/4" LONG, HWH, TEK SELF-DRILLING SCREW, 300-SERIES SST

RICE ENGINEERING

105 School Creek Trail
Luxemburg, WI 54217
Phone: (920) 617-1042
Fax: (920) 617-1100
www.rice-inc.com
Florida Firm No: F-01000005061
Certificate of Authorization: #9090
Wayne K. Helmila
Registration No: 59092

UNLESS OTHERWISE SPECIFIED
DIMENSIONS ARE IN INCHES.

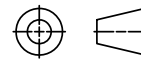
TOLERANCE UNLESS NOTED:
X.X ±0.060
X.XX ±0.030
X.XXX ±0.010
ANGLE ±1°
FRACTION ±1/16

MAX HOLE BREAKOUT:
15% OF MATERIAL THICKNESS

PCI INDUSTRIES DOING BUSINESS AS

POTTORFF

THIRD ANGLE PROJECTION



5101 Blue Mound Road
Fort Worth, Texas 76106
Phone: 817-509-2300
Fax: 817-831-3110

DRAWING DESC:
BILL OF MATERIALS

PROJECT: ECV-345-MD

PROJ. MGR.:

DATE: 5/5/2020

SHEET: 7 of 7

CHK'D BY:

SCALE: 8" = 1'-0"

DRAWN BY: NWW / JG

DRAWING NUMBER

ECV-345-MD NOA

REV.	DESCRIPTION	DATE	DRAWN BY
3	UPDATED LABEL DETAIL	11/2/2021	NWW
2	UPDATED FOR NOA RENEWAL	3/11/2021	NWW
1	INITIAL RELEASE	5/5/2020	NWW