



MIAMI-DADE COUNTY
PRODUCT CONTROL SECTION
 11805 SW 26 Street, Room 208
 Miami, Florida 33175-2474
 T (786) 315-2590 F (786) 315-2599
www.miamidade.gov/building

DEPARTMENT OF REGULATORY AND ECONOMIC RESOURCES (RER)
 BOARD AND CODE ADMINISTRATION DIVISION
NOTICE OF ACCEPTANCE (NOA)

PCI Industries, LLC dba Pottorff
5101 Blue Mound Road
Fort Worth, TX 76106

SCOPE: This NOA is being issued under the applicable rules and regulations governing the use of construction materials. The documentation submitted has been reviewed and accepted by Miami-Dade County RER-Product Control Section to be used in Miami Dade County and other areas where allowed by the Authority Having Jurisdiction (AHJ).

This NOA shall not be valid after the expiration date stated below. The Miami-Dade County Product Control Section (In Miami Dade County) and/or the AHJ (in areas other than Miami Dade County) reserve the right to have this product or material tested for quality assurance purposes. If this product or material fails to perform in the accepted manner, the manufacturer will incur the expense of such testing and the AHJ may immediately revoke, modify, or suspend the use of such product or material within their jurisdiction. RER reserves the right to revoke this acceptance if it is determined by Miami-Dade County Product Control Section that this product or material fails to meet the requirements of the applicable building code.

This product is approved as described herein and has been designed to comply with the Florida Building Code, including the High Velocity Hurricane Zone.

DESCRIPTION: Model EFJ- 937-MD Extruded Aluminum Louver

APPROVAL DOCUMENT: Drawing No. **EFJ-937-MD NOA**, titled “EFJ-937-MD”, sheets 1 through 13 of 13, dated 01/18/17, with revision **5** dated 11/02/21, prepared by the manufacturer, signed and sealed by Wayne K. Helmila, P.E., bearing the Miami-Dade County Product Control Revision stamp with the Notice of Acceptance number and expiration date by the Miami-Dade County Product Control Section.

MISSILE IMPACT RATING: Large and Small Missile Impact Resistant

LABELING: A permanent label with the manufacturer's name or logo, manufacturing plant’s city, state, model/ series, and the statement reading: "Miami-Dade County Product Control Approved", is to be located on each unit.

RENEWAL of this NOA shall be considered after a renewal application has been filed and there has been no change in the applicable building code negatively affecting the performance of this product.

TERMINATION of this NOA will occur after the expiration date or if there has been a revision or change in the materials, use, and/or manufacture of the product or process. Misuse of this NOA as an endorsement of any product, for sales, advertising or any other purposes shall automatically terminate this NOA. Failure to comply with any section of this NOA shall be cause for termination and removal of NOA.


ADVERTISEMENT: The NOA number preceded by the words Miami-Dade County, Florida, and followed by the expiration date may be displayed in advertising literature. If any portion of the NOA is displayed, then it shall be done in its entirety.

INSPECTION: A copy of this entire NOA shall be provided to the user by the manufacturer or its distributors and shall be available for inspection at the job site at the request of the Building Official.

This NOA **revises NOA No. 23-0117.05** and consists of this page 1 and evidence pages E-1, E-2 and E-3, as well as approval document mentioned above.

The submitted documentation was reviewed by **Manuel Perez, P.E.**




 2/14/24

NOA No. 23-1215.16
 Expiration Date: May 17, 2028
 Approval Date: February 22, 2024
 Page 1

NOTICE OF ACCEPTANCE: EVIDENCE SUBMITTED

1. EVIDENCE SUBMITTED UNDER PREVIOUS NOA's

A. DRAWINGS

1. Manufacturer's die drawings and sections.
(Submitted under NOA No. 18-0312.04)
2. Drawing No. **EFJ-937-MD NOA**, titled "EFJ-937-MD", sheets 1 through 13 of 13, dated 01/18/17, with revision **5** dated 11/02/21, prepared by the manufacturer, signed and sealed by Wayne K. Helmila, P.E.
(Submitted under NOA No. 23-0117.05)

B. TESTS

1. Test reports on: 1) Uniform Static Air Pressure Test, Loading per FBC, TAS 202-94
2) Large Missile Impact Test per FBC, TAS 201-94 (Level E, 80 fps)
3) Cyclic Wind Pressure Loading per FBC, TAS 203-94
along with installation diagram of Model EFJ-937-MD Aluminum Louvers, prepared by UL, LLC, Test Report No. **SV30902-20170615**, dated 06/15/17, signed and sealed by Alexis Spyrou, P.E.
(Submitted under NOA No. 18-0312.04)
2. Test Reports on High Velocity Wind Driven Rain Resistance per AMCA 550-15 of a Model EFJ-937-MD Aluminum Louver, prepared by Intertek, Test Report No. **H4604.01-801-44**, dated 10/12/17, signed and sealed by Tyler Westerling, P.E.
(Submitted under NOA No. 18-0312.04)

C. CALCULATIONS

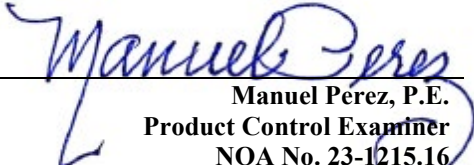
1. EFJ-937-MD louver anchor calculations dated 01/14/21, prepared by Rice Engineering, signed and sealed by Wayne K. Helmila, P.E.
(Submitted under NOA No. 21-1122.07)

D. QUALITY ASSURANCE

1. Miami-Dade Department of Regulatory and Economic Resources (RER)

E. MATERIAL CERTIFICATIONS

1. None.


Manuel Perez, P.E.
Product Control Examiner
NOA No. 23-1215.16
Expiration Date: May 17, 2028
Approval Date: February 22, 2024

NOTICE OF ACCEPTANCE: EVIDENCE SUBMITTED

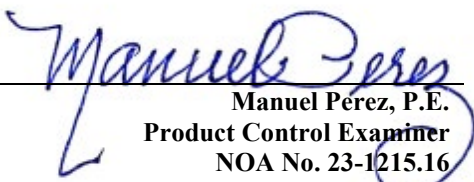
1. EVIDENCE SUBMITTED UNDER PREVIOUS NOA's (CONTINUED)

F. STATEMENTS

1. Statement letter of conformance, complying with **FBC 7th Edition (2020)**, dated 12/13/22, issued by Rice Engineering, signed and sealed by Wayne K. Helmila, P.E. **(Submitted under NOA No. 23-0117.05)**
2. Asset Purchase Agreement entered between **PCI Industries, Inc.** a California corporation (the Seller) and **PCI Industries, LLC**, a Delaware limited liability company (the Buyer), dated 10/22/21. **(Submitted under NOA No. 23-0117.05)**
3. Statement letter as an official notification from **PCI Industries, Inc.** that all assets associated with the Pottorff model EXA-645-MD aluminum louver have been legally sold to **PCI Industries, LLC**, dated 11/17/21 and signed by Nathan Woodworth, Louver Development Manager. **(Submitted under NOA No. 23-0117.05)**
4. Statement letter as a request from **PCI Industries, LLC** to issue a new Notice of Acceptance (NOA) for the Pottorff model EXA-645-MD aluminum louver, dated 11/17/21 and signed by Nathan Woodworth, Louver Development Manager. **(Submitted under NOA No. 23-0117.05)**
5. Statement letter of no financial interest, dated 01/25/22, issued by Rice Engineering, signed and sealed by Wayne K. Helmila, P.E. **(Submitted under NOA No. 21-1122.07)**

G. OTHERS

1. Notice of Acceptance No. **21-1122.07**, issued to PCI Industries, LLC d/b/a Pottorff for their Model EFJ - 937-MD Extruded Aluminum Louver, approved on 01/20/22 and expiring on 05/17/23.


Manuel Perez, P.E.
Product Control Examiner
NOA No. 23-1215.16
Expiration Date: May 17, 2028
Approval Date: February 22, 2024

NOTICE OF ACCEPTANCE: EVIDENCE SUBMITTED

2. NEW EVIDENCE SUBMITTED

A. DRAWINGS

1. None.

B. TESTS

1. None.

C. CALCULATIONS

1. None.

D. QUALITY ASSURANCE

1. Miami-Dade Department of Regulatory and Economic Resources (RER)

E. MATERIAL CERTIFICATIONS

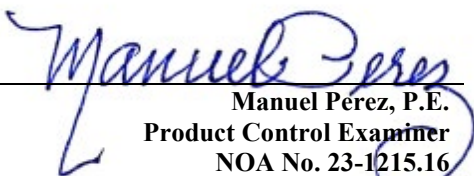
1. None.

F. STATEMENTS

1. Statement letter of conformance, complying with **FBC 8th Edition (2023)**, issued by Rice Engineering, dated 11/28/23, signed and sealed by Wayne K. Helmila, P.E.

G. OTHERS

1. Notice of Acceptance No. **23-0117.05**, issued to PCI Industries, LLC d/b/a Pottorff for their Model EFJ - 937-MD Extruded Aluminum Louver, approved on 02/09/23 and expiring on 05/17/28.



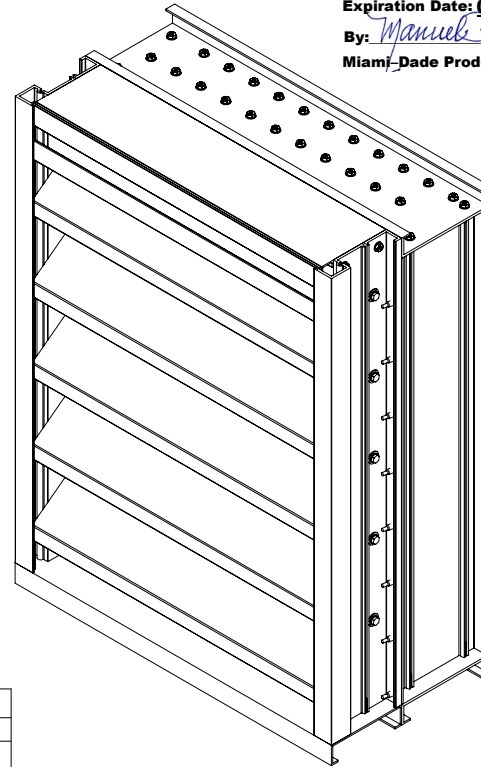
Manuel Perez, P.E.
Product Control Examiner
NOA No. 23-1215.16

Expiration Date: May 17, 2028
Approval Date: February 22, 2024

NOTES:

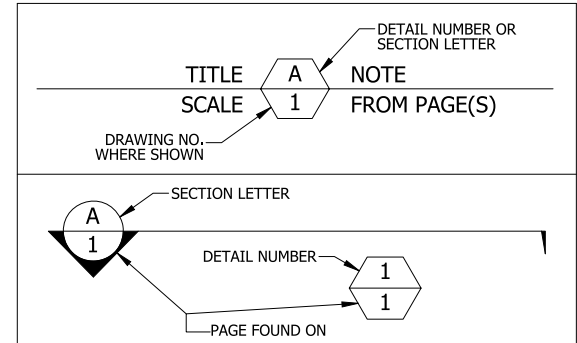
- THIS NOA DRAWING INCLUDES INSTALLATION DETAILS TO ATTAIN MAXIMUM DESIGN PRESSURES OF ±130 PSF AS TESTED IN ACCORDANCE WITH PROTOCOLS TAS 201 (LARGE MISSILE IMPACT - LEVEL 'E', 80 FPS), TAS 202 (STATIC WIND PRESSURE), TAS 203 (CYCLIC WIND PRESSURE), AND AMCA 550-15 [EQUIVALENT TO AMCA 550-08 AND AMCA 550-09] (HIGH VELOCITY WIND-DRIVEN RAIN) FOR USE WITHIN HIGH VELOCITY HURRICANE-AFFECTED ZONES DEFINED BY THE FLORIDA BUILDING CODE.
- ALL VARIATIONS ARE LARGE MISSILE IMPACT RESISTANT.
- UNITS OF MEASURE ARE FRACTIONAL INCHES UNLESS OTHERWISE SPECIFIED.
- IT IS ASSUMED THAT THE LOUVER SYSTEMS DO NOT SUPPORT ANY LOADS TRANSFERRED FROM THE BUILDING CONDITION.
- IT IS ASSUMED THAT THE BUILDING CONDITIONS ARE ADEQUATELY DESIGNED TO SUPPORT LOADS IMPARTED BY THE LOUVER SYSTEM.
- TO PREVENT GALVANIC CORROSION, ELECTROCHEMICALLY DISSIMILAR MATERIALS IN CONTACT WITH ONE ANOTHER SHALL BE PROTECTED BY PAINT, GASKETING, OR OTHER MEANS PER THE FLORIDA BUILDING CODE.
- SINCE THE DESIGN MEETS THE PERFORMANCE STANDARDS OF AMCA 550, THE ROOM BEHIND THE LOUVER NEED NOT BE DESIGNED TO DRAIN WATER PENETRATION INTO THE ROOM, AND MAY HOUSE NON-WATER RESISTANT EQUIPMENT, COMPONENTS, OR SUPPLIES.
- OTHER BUILDING CONDITIONS THAN THOSE DENOTED CAN BE UTILIZED IF ANALYZED AND APPROVED BY A PROFESSIONAL ENGINEER.
- MULTI-SECTION HIGH LOUVER SYSTEMS ARE ALLOWABLE PROVIDED THE INDIVIDUAL SECTIONS ARE SUPPORTED PER THE DETAILS ON THIS DRAWING AND A SUITABLE SUPPORT STRUCTURE IS ANALYZED AND APPROVED BY A PROFESSIONAL ENGINEER.
- TO PREVENT WATER INFILTRATION BETWEEN THE LOUVER AND THE BUILDING CONDITION, LOUVERS SHALL BE INSTALLED WITH CAULK AND BACKER ROD AROUND THE ENTIRE PERIMETER OF THE OPENING, FOR MULTIPLE SECTION WIDE LOUVER ASSEMBLIES, CAULK AND BACKER ROD SHALL ALSO BE APPLIED AT EVERY VERTICAL JOINT BETWEEN SECTIONS.

PRODUCT REVISED
 As complying with the Florida
 Building Code
 NOA-No. **23-1215.16**
 Expiration Date: **05/17/2028**
 By: *Manuel Torres*
 Miami-Dade Product Control



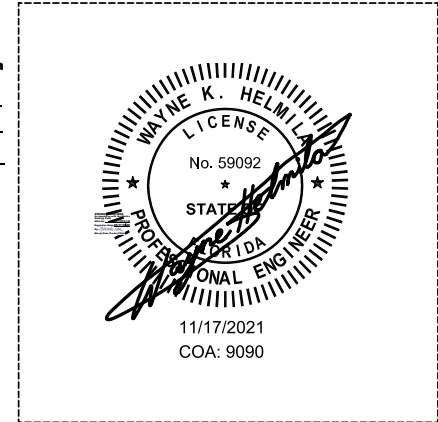
| TABLE 1 SINGLE SECTION SIZE LIMITATIONS | | |
|--|-------------|-------------|
| MAX DESIGN PRESSURE | MIN (W X H) | MAX (W X H) |
| ±130 PSF | 12" X 12" | 60" X 120" |

| TABLE 2 MULTIPLE SECTION SIZE LIMITATIONS (MAX DESIGN PRESSURE: 130 PSF) | |
|--|--------------|
| SINGLE SECTION HIGH - UNLIMITED WIDTH | SEE SHEET 10 |



P.E. STAMP

PRODUCT REVISED
 as complying with the Florida
 Building Code
 NOA-No. **21-1122.07**
 Expiration Date **05/17/2023**
 By: *Rice*
 Miami-Dade Product Control



RICE
 ENGINEERING
 105 School Creek Trail
 Luxemburg, WI 54217
 Phone: (920) 617-1042
 Fax: (920) 617-1100
 www.rice-inc.com
 Florida Firm No: F-01000005061
 Certificate of Authorization: #9090
 Wayne K. Helmila
 Registration No: 59092

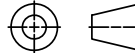
| TABLE 3 ANCHOR SCHEDULE | | | | |
|--|---|----------------|--------------------|---------|
| SUBSTRATE | ANCHOR TYPE | MIN. EMBEDMENT | MIN. EDGE DISTANCE | SPACING |
| CONCRETE (f _c ≥ 3500 PSI) | 3/8" X 4" DEWALT SCREW-BOLT+ (F-5) | 3 1/4" | 2" | 6" |
| GROUT-FILLED CMU (f _m ≥ 1500 PSI) | 3/8" X 4" DEWALT SCREW-BOLT+ (F-5) | 3 1/4" | 1 1/2" | 6" |
| STEEL (MIN. 1/8" THICK WITH F _y ≥ 36 KSI, OR MIN. 16-GA WITH F _y ≥ 50 KSI) | 1/4" X 1" SELF-DRILLING SCREW (F-7) | FULL | 1 1/2" | 6" |
| WOOD (S.G. ≥ 0.4) | 1/2" X 3 1/2" LAG BOLT WITH FLAT WASHER (F-8) | 3" | 2" | 5" |

PRODUCT RENEWED
 as complying with the Florida
 Building Code
 NOA-No. **23-0117.05**
 Expiration Date **05/17/2028**
 By: *Rice*
 Miami-Dade Product Control

UNLESS OTHERWISE SPECIFIED DIMENSION ARE IN INCHES.
 TOLERANCE UNLESS NOTED:
 X.X ±0.030
 X.XX ±0.015
 X.XXX ±0.010
 ANGLE ±1°
 FRACTION ±1/16
 MAX HOLE BREAKOUT: 15% OF MATERIAL THICKNESS

5101 Blue Mound Road
 Fort Worth, Texas 76106
 Phone: 817-509-2300
 Fax: 817-831-3110

THIRD ANGLE PROJECTION



PCI INDUSTRIES DOING BUSINESS AS

POTTORFF

DRAWING DESCR: COVER SHEET

PROJECT: EFJ-937-MD

LOCATION:

CUSTOMER:

PROJ. MGR:

DATE: 1/18/2017

CHK'D BY: NW

DRAWN BY: JG

ORDER NUMBER

P.O. NUMBER

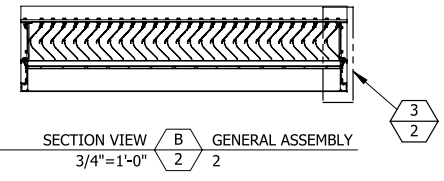
DRAWING NUMBER

SHEET: 1 of 13

SCALE: NONE

EFJ-937-MD NOA

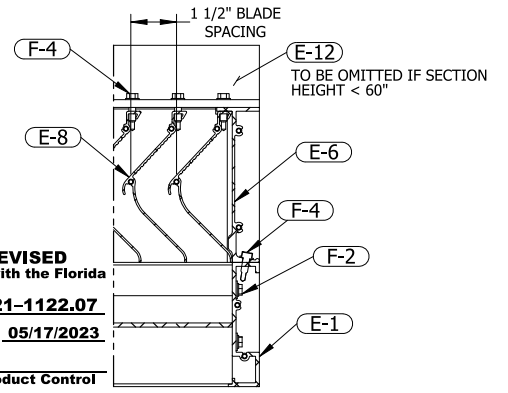
C:\Users\inwoodworth\Desktop\Miami-Dade Updates (2020)\EFJ-937-MD\EFJ-937-MD NOA Drawings (Rev. 3)



PRODUCT RENEWED
 as complying with the Florida
 Building Code
 NOA-No. **23-0117.05**
 Expiration Date **05/17/2028**
 By *[Signature]*
Miami-Dade Product Control

PRODUCT REVISED
 As complying with the Florida
 Building Code
 NOA-No. **23-1215.16**
 Expiration Date: **05/17/2028**
 By: *[Signature]*
Miami-Dade Product Control

GENERAL LOUVER ASSEMBLY

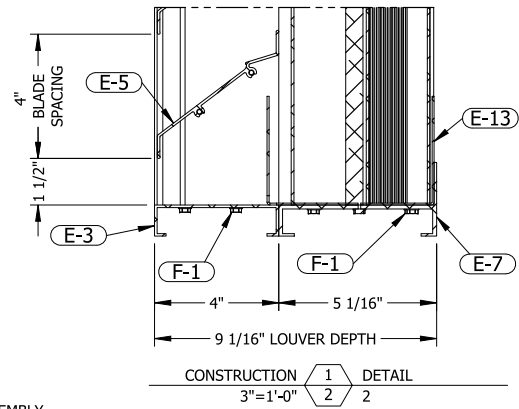


PRODUCT REVISED
 as complying with the Florida
 Building Code
 NOA-No. **21-1122.07**
 Expiration Date **05/17/2023**
 By *[Signature]*
Miami-Dade Product Control

CONSTRUCTION $\frac{2}{2}$ DETAIL $\frac{2}{2}$
 3"=1'-0"
 IN FLANGED CONFIGURATIONS:
 E-10 WILL BE USED IN PLACE OF E-2

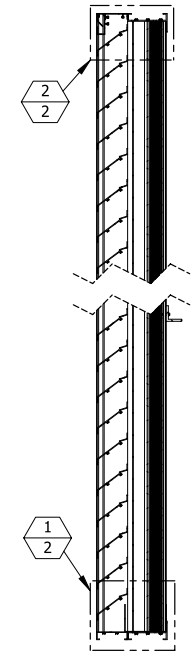
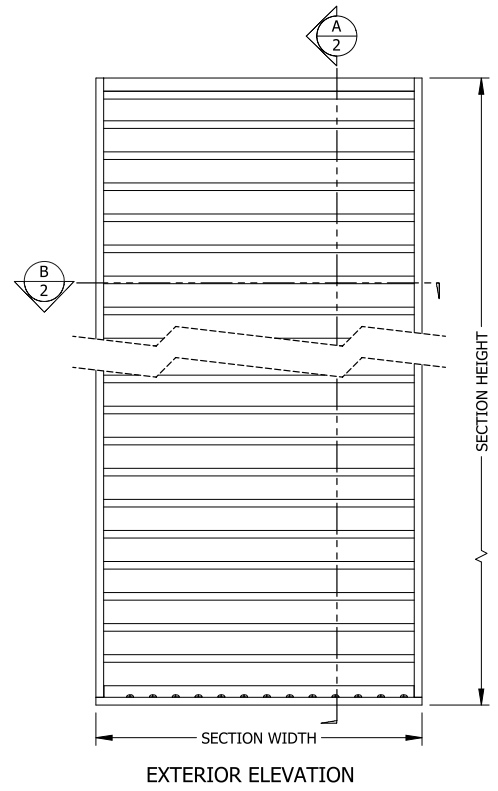
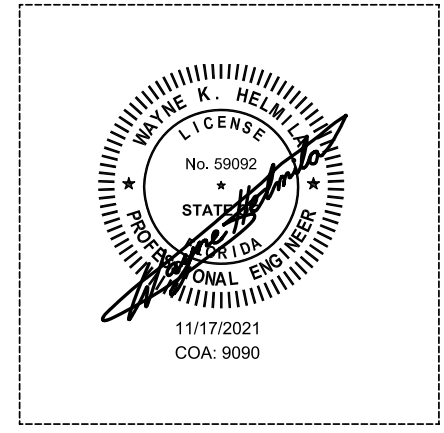
CONSTRUCTION $\frac{3}{2}$ DETAIL $\frac{2}{2}$
 3"=1'-0"
 IN FLANGED CONFIGURATIONS:
 E-9 WILL BE USED IN PLACE OF E-1

RICE
 ENGINEERING
 105 School Creek Trail
 Luxemburg, WI 54217
 Phone: (920) 617-1042
 Fax: (920) 617-1100
 www.rice-inc.com
 Florida Firm No: F-01000005061
 Certificate of Authorization: #9090
 Wayne K. Helmila
 Registration No: 59092



CONSTRUCTION $\frac{1}{2}$ DETAIL $\frac{2}{2}$
 3"=1'-0"
 IN FLANGED CONFIGURATIONS:
 E-11 WILL BE USED IN PLACE OF E-3

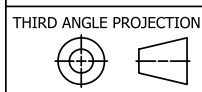
P.E. STAMP



SECTION VIEW $\frac{3}{4}$ "=1'-0"
 GENERAL ASSEMBLY $\frac{2}{2}$

UNLESS OTHERWISE SPECIFIED
 DIMENSION ARE IN INCHES.
 TOLERANCE UNLESS NOTED:
 X.X ±0.030
 X.XX ±0.015
 X.XXX ±0.010
 ANGLE ±1°
 FRACTION ±1/16
 MAX HOLE BREAKOUT:
 15% OF MATERIAL THICKNESS

5101 Blue Mound Road
 Fort Worth, Texas 76106
 Phone: 817-509-2300
 Fax: 817-831-3110



PCI INDUSTRIES DOING BUSINESS AS
POTTORFF

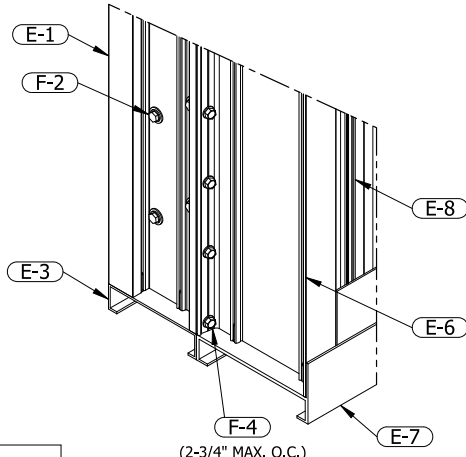
| | | | |
|--|-------------------|----------------|-------------|
| DRAWING DESCR: GENERAL LOUVER ASSEMBLY | | | |
| PROJECT: EFJ-937-MD | | | |
| LOCATION: | | | |
| CUSTOMER: | | | |
| PROJ. MGR: | DRAWN BY: JG | | |
| DATE: 1/18/2017 | CHK'D BY: NW | ORDER NUMBER | P.O. NUMBER |
| SHEET: 2 of 13 | SCALE: 3/4"=1'-0" | DRAWING NUMBER | |
| | | EFJ-937-MD NOA | |

| REV. | DESCRIPTION | DATE | DRAWN BY |
|------|--------------------------|------------|----------|
| 5 | UPDATED LABEL DETAIL | 11/2/2021 | NWW |
| 3 | UPDATED ANCHORAGE DESIGN | 3/24/2021 | JG |
| 2 | REVISED PER MARKUPS | 12/18/2017 | JG |
| 1 | INITIAL RELEASE | 1/18/2017 | JG |

PRODUCT RENEWED
as complying with the Florida
Building Code
NOA-No. **23-0117.05**

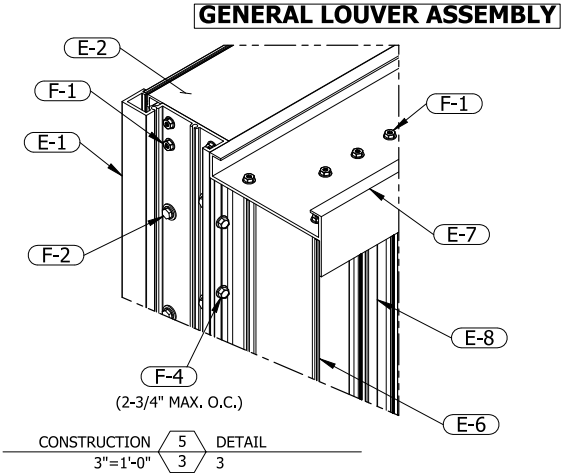
Expiration Date **05/17/2028**

By *[Signature]*
Miami-Dade Product Control



0.866" X 0.31" DRAIN HOLES
SPACED 3" MAX. O.C.

EXTERIOR VIEW OF
REAR MODULE



GENERAL LOUVER ASSEMBLY

CONSTRUCTION 5 3 DETAIL 3 3
3"=1'-0"

IN FLANGED CONFIGURATIONS:
E-9 WILL BE USED IN PLACE OF E-1
E-10 WILL BE USED IN PLACE OF E-2

PRODUCT REVISED
as complying with the Florida
Building Code
NOA-No. **21-1122.07**

Expiration Date **05/17/2023**

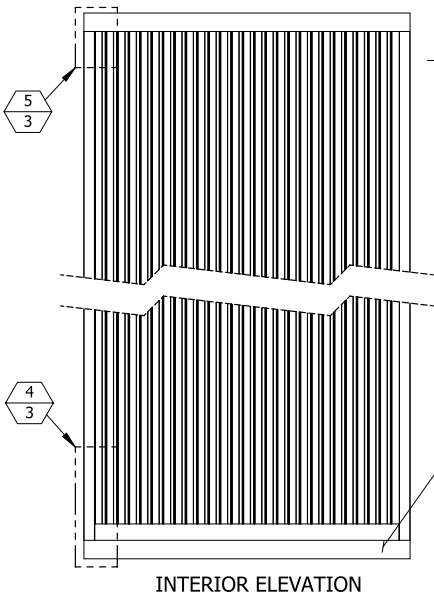
By *[Signature]*
Miami-Dade Product Control

CONSTRUCTION 4 3 DETAIL 3 3
3"=1'-0"

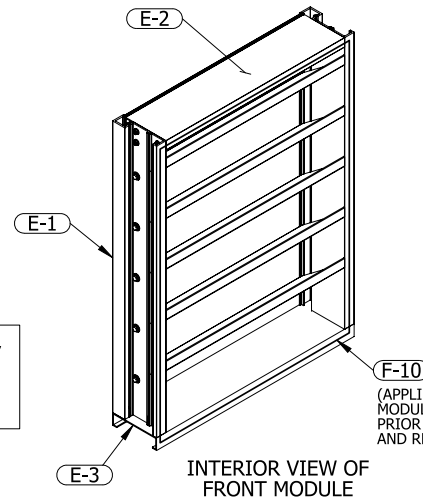
IN FLANGED CONFIGURATIONS:
E-9 WILL BE USED IN PLACE OF E-1
E-11 WILL BE USED IN PLACE OF E-3

ENGRAVED LABEL DETAIL

PCI Industries LLC d/b/a **POTTORFF**
Ft Worth TX SO# 123456
Miami Dade County
Product Control
Approved



INTERIOR ELEVATION



INTERIOR VIEW OF
FRONT MODULE

PRODUCT REVISED
As complying with the Florida
Building Code
NOA-No. **23-1215.16**

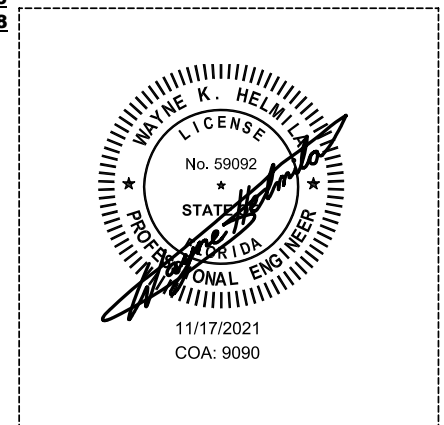
Expiration Date: **05/17/2028**

By *Manuel Bern*
Miami-Dade Product Control

RICE
ENGINEERING

105 School Creek Trail
Luxemburg, WI 54217
Phone: (920) 617-1042
Fax: (920) 617-1100
www.rice-inc.com
Florida Firm No: F-01000005061
Certificate of Authorization: #9090
Wayne K. Helmli
Registration No: 59092

P.E. STAMP



(APPLIED TO REAR FACE OF FRONT
MODULE AROUND ENTIRE PERIMETER
PRIOR TO ATTACHMENT OF FRONT
AND REAR MODULES)

C:\Users\inwoodworth\Desktop\Miami-Dade Updates (2020)\EFJ-937-MD\EFJ-937-MD NOA Drawings (Rev. 3)

| REV. | DESCRIPTION | DATE | DRAWN BY |
|------|--------------------------|------------|----------|
| 5 | UPDATED LABEL DETAIL | 11/2/2021 | NWW |
| 3 | UPDATED ANCHORAGE DESIGN | 3/24/2021 | JG |
| 2 | REVISED PER MARKUPS | 12/18/2017 | JG |
| 1 | INITIAL RELEASE | 1/18/2017 | JG |

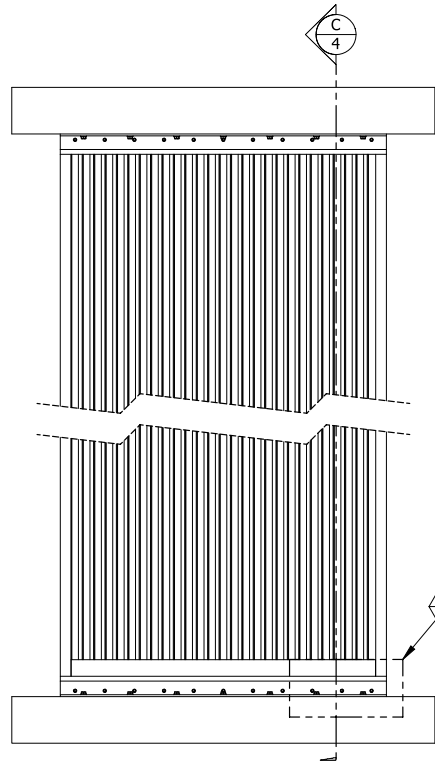
UNLESS OTHERWISE SPECIFIED
DIMENSION ARE IN INCHES.
TOLERANCE UNLESS NOTED:
X.X ±0.030
X.XX ±0.015
X.XXX ±0.010
ANGLE ±1°
FRACTION ±1/16
MAX HOLE BREAKOUT:
15% OF MATERIAL THICKNESS

5101 Blue Mound Road
Fort Worth, Texas 76106
Phone: 817-509-2300
Fax: 817-831-3110
THIRD ANGLE PROJECTION

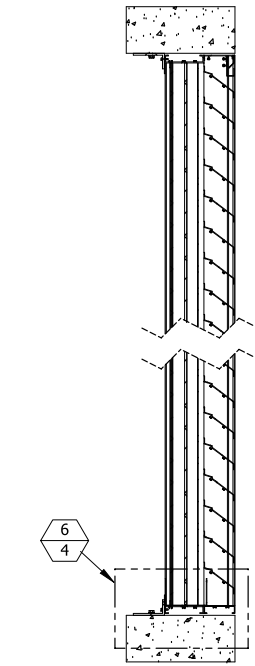
PCI INDUSTRIES DOING BUSINESS AS
POTTORFF

| | | | |
|--|-------------------|----------------|----------------|
| DRAWING DESCR: GENERAL LOUVER ASSEMBLY | | | |
| PROJECT: EFJ-937-MD | | | |
| LOCATION: | | | |
| CUSTOMER: | | | |
| PROJ. MGR: | DRAWN BY: JG | ORDER NUMBER | P.O. NUMBER |
| DATE: 1/18/2017 | CHK'D BY: NW | DRAWING NUMBER | |
| SHEET: 3 of 13 | SCALE: 3/4"=1'-0" | | EFJ-937-MD NOA |

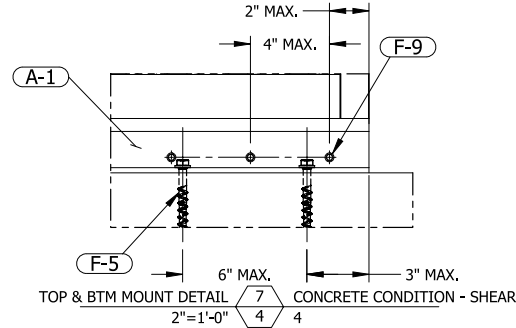
CONCRETE CONDITION - SHEAR



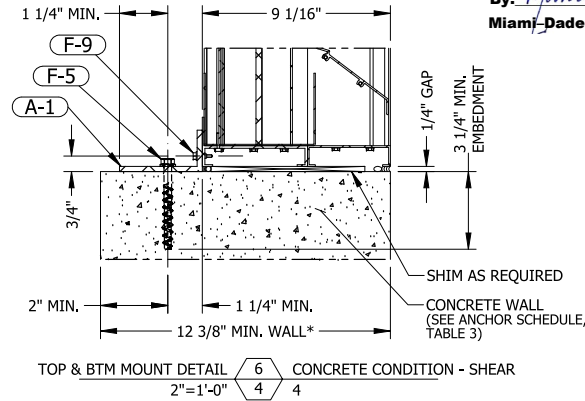
INTERIOR ELEVATION



SECTION VIEW $\frac{C}{4}$ CONCRETE CONDITION
3/4"=1'-0" $\frac{7}{4}$ 4



TOP & BTM MOUNT DETAIL $\frac{7}{4}$ CONCRETE CONDITION - SHEAR
2"=1'-0" $\frac{7}{4}$ 4



TOP & BTM MOUNT DETAIL $\frac{6}{4}$ CONCRETE CONDITION - SHEAR
2"=1'-0" $\frac{6}{4}$ 4

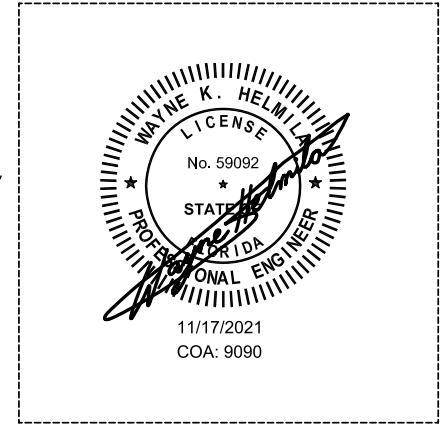
PRODUCT REVISED
As complying with the Florida Building Code
NOA-No. **23-1215.16**
Expiration Date: **05/17/2028**
By: *Manuel Perez*
Miami-Dade Product Control

PRODUCT REVISED
as complying with the Florida Building Code
NOA-No. **21-1122.07**
Expiration Date **05/17/2023**
By: *[Signature]*
Miami-Dade Product Control

PRODUCT REVISED
As complying with the Florida Building Code
NOA-No. **23-1215.16**
Expiration Date: **05/17/2028**
By: *Manuel Perez*
Miami-Dade Product Control

RICE
ENGINEERING
105 School Creek Trail
Luxemburg, WI 54217
Phone: (920) 617-1042
Fax: (920) 617-1100
www.rice-inc.com
Florida Firm No: F-0100005061
Certificate of Authorization: #9090
Wayne K. Helmla
Registration No: 59092

P.E. STAMP



PRODUCT RENEWED
as complying with the Florida Building Code
NOA-No. **23-0117.05**
Expiration Date **05/17/2028**

By: *[Signature]*
Miami-Dade Product Control

*NOTE: FOR CONCRETE WALL DEPTHS LESS THAN 12-3/8", REFER TO SHEET 5 FOR A TENSION-TYPE CONNECTION

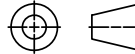
| | | | |
|------|--------------------------|------------|----------|
| 5 | UPDATED LABEL DETAIL | 11/2/2021 | NWW |
| 3 | UPDATED ANCHORAGE DESIGN | 3/24/2021 | JG |
| 2 | REVISED PER MARKUPS | 12/18/2017 | JG |
| 1 | INITIAL RELEASE | 1/18/2017 | JG |
| REV. | DESCRIPTION | DATE | DRAWN BY |

UNLESS OTHERWISE SPECIFIED DIMENSION ARE IN INCHES.
TOLERANCE UNLESS NOTED:
X.X ±0.030
X.XX ±0.015
X.XXX ±0.010
ANGLE ±1°
FRACTION ±1/16

MAX HOLE BREAKOUT:
15% OF MATERIAL THICKNESS

5101 Blue Mound Road
Fort Worth, Texas 76106
Phone: 817-509-2300
Fax: 817-831-3110

THIRD ANGLE PROJECTION



PCI INDUSTRIES DOING BUSINESS AS

POTTORFF

DRAWING DESCR: CONCRETE CONDITION - SHEAR

PROJECT: EFJ-937-MD

LOCATION:

CUSTOMER:

PROJ. MGR:

DATE: 1/18/2017

CHK'D BY: NW

SHEET: 4 of 13

SCALE: 3/4"=1'-0"

DRAWN BY: JG

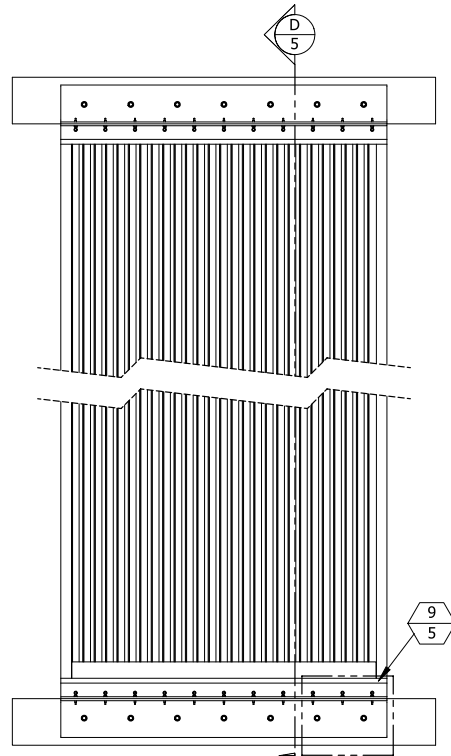
ORDER NUMBER

P.O. NUMBER

DRAWING NUMBER

EFJ-937-MD NOA

C:\Users\inwoodworth\Desktop\Miami-Dade Updates (2020)\EFJ-937-MD\EFJ-937-MD NOA Drawings (Rev. 3)



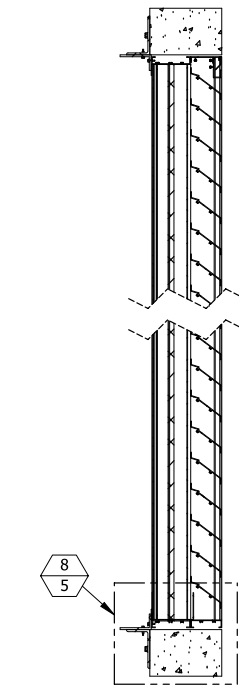
INTERIOR ELEVATION

PRODUCT RENEWED
as complying with the Florida
Building Code
NOA-No. **23-0117.05**

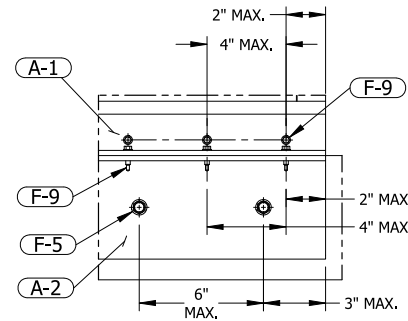
Expiration Date **05/17/2028**

By *[Signature]*
Miami-Dade Product Control

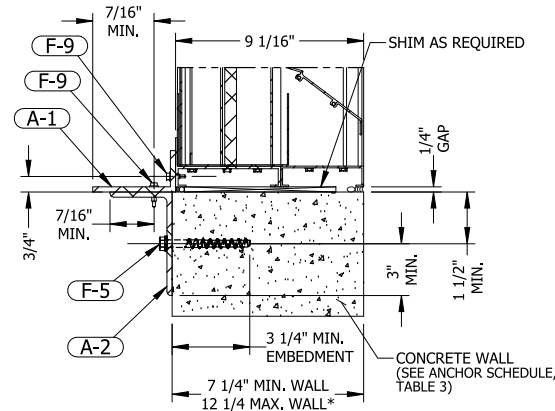
| REV. | DESCRIPTION | DATE | DRAWN BY |
|------|--------------------------|------------|----------|
| 5 | UPDATED LABEL DETAIL | 11/2/2021 | NWW |
| 3 | UPDATED ANCHORAGE DESIGN | 3/24/2021 | JG |
| 2 | REVISED PER MARKUPS | 12/18/2017 | JG |
| 1 | INITIAL RELEASE | 1/18/2017 | JG |



SECTION VIEW $\frac{D}{5}$ CONCRETE CONDITION
3/4"=1'-0" 5



TOP & BTM MOUNT DETAIL $\frac{9}{5}$ CONCRETE CONDITION - TENSION
2"=1'-0" 5



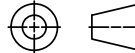
TOP & BTM MOUNT DETAIL $\frac{8}{5}$ CONCRETE CONDITION - TENSION
2"=1'-0" 5

*NOTE: FOR CONCRETE WALL DEPTHS GREATER THAN 12-1/4", REFER TO SHEET 4 FOR A SHEAR-TYPE CONNECTION

UNLESS OTHERWISE SPECIFIED
DIMENSION ARE IN INCHES.
TOLERANCE UNLESS NOTED:
X.X ±0.030
X.XX ±0.015
X.XXX ±0.010
ANGLE ±1°
FRACTION ±1/16

5101 Blue Mound Road
Fort Worth, Texas 76106
Phone: 817-509-2300
Fax: 817-831-3110

THIRD ANGLE PROJECTION



PCI INDUSTRIES DOING BUSINESS AS

POTTORFF

DRAWING DESCR: CONCRETE CONDITION - TENSION

PROJECT: EFJ-937-MD

LOCATION:

CUSTOMER:

PROJ. MGR:

DATE: 1/18/2017

CHK'D BY: NW

DRAWN BY: JG

ORDER NUMBER

P.O. NUMBER

DRAWING NUMBER

SHEET: 5 of 13

SCALE: 3/4"=1'-0"

EFJ-937-MD NOA

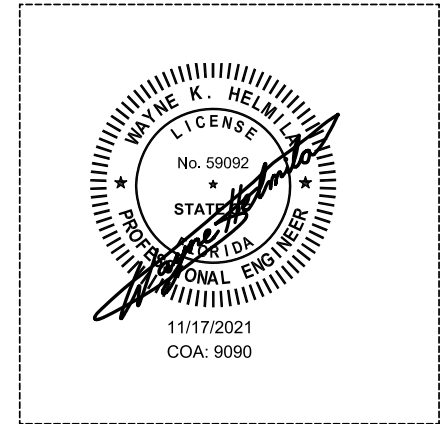
CONCRETE CONDITION - TENSION

PRODUCT REVISED
As complying with the Florida
Building Code
NOA-No. **23-1215.16**
Expiration Date: **05/17/2028**
By: *[Signature]*
Miami-Dade Product Control

PRODUCT REVISED
as complying with the Florida
Building Code
NOA-No. **21-1122.07**
Expiration Date **05/17/2023**
By: *[Signature]*
Miami-Dade Product Control

RICE
ENGINEERING
105 School Creek Trail
Luxemburg, WI 54217
Phone: (920) 617-1042
Fax: (920) 617-1100
www.rice-inc.com
Florida Firm No: F-0100005061
Certificate of Authorization: #9090
Wayne K. Helmla
Registration No: 59092

P.E. STAMP



C:\Users\inwoodworth\Desktop\Miami-Dade Updates (2020)\EFJ-937-MD\EFJ-937-MD NOA Drawings (Rev. 3)

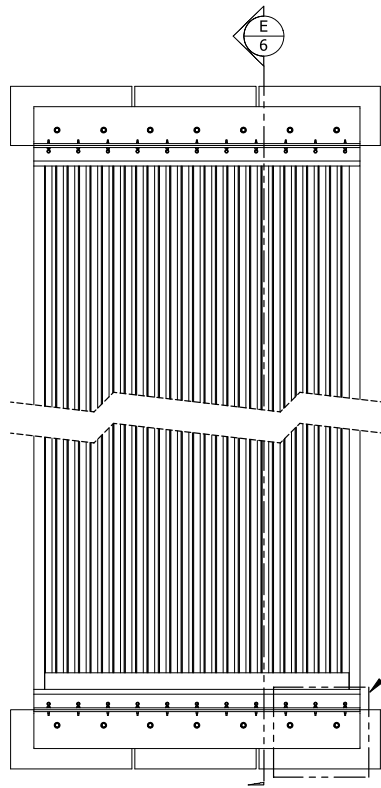
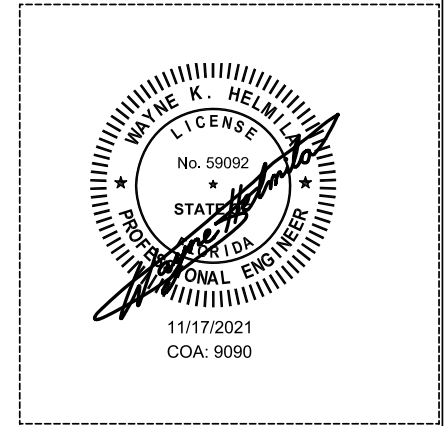
CMU CONDITION

PRODUCT REVISED
As complying with the Florida Building Code
NOA-No. **23-1215.16**
Expiration Date: **05/17/2028**
By: *Manuel Perez*
Miami-Dade Product Control

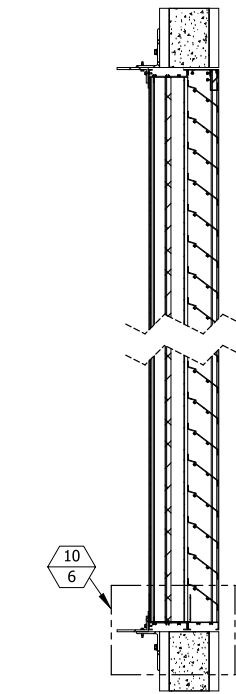
PRODUCT REVISED
as complying with the Florida Building Code
NOA-No. **21-1122.07**
Expiration Date **05/17/2023**
By: *[Signature]*
Miami-Dade Product Control

RICE
ENGINEERING
105 School Creek Trail
Luxemburg, WI 54217
Phone: (920) 617-1042
Fax: (920) 617-1100
www.rice-inc.com
Florida Firm No: F-0100005061
Certificate of Authorization: #9090
Wayne K. Helmila
Registration No: 59092

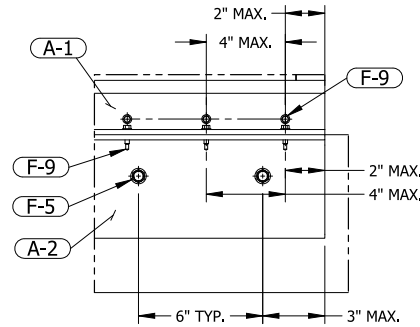
P.E. STAMP



INTERIOR ELEVATION

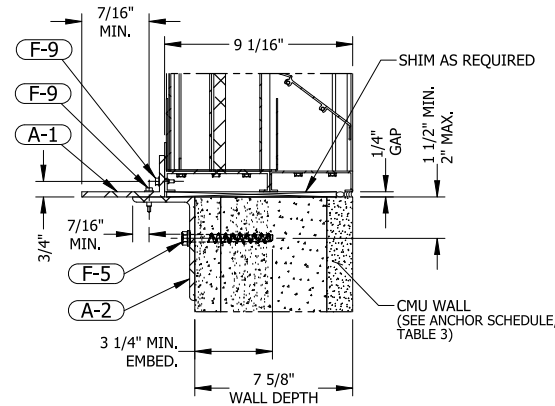


SECTION VIEW **E 6** CMU CONDITION
3/4"=1'-0"



TOP & BTM MOUNT DETAIL **11 6** CMU CONDITION
2"=1'-0"

ANCHOR CENTERS MAY BE LOCATED NO CLOSER THAN 1-1/4" TO A VERTICAL (HEAD) JOINT IN THE MASONRY



TOP & BTM MOUNT DETAIL **10 6** CMU CONDITION
2"=1'-0"

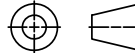
PRODUCT RENEWED
as complying with the Florida Building Code
NOA-No. **23-0117.05**
Expiration Date **05/17/2028**

By: *[Signature]*
Miami-Dade Product Control

UNLESS OTHERWISE SPECIFIED DIMENSION ARE IN INCHES.
TOLERANCE UNLESS NOTED:
X.X ±0.030
X.XX ±0.015
X.XXX ±0.010
ANGLE ±1°
FRACTION ±1/16

5101 Blue Mound Road
Fort Worth, Texas 76106
Phone: 817-509-2300
Fax: 817-831-3110

THIRD ANGLE PROJECTION



PCI INDUSTRIES DOING BUSINESS AS

POTTORFF

DRAWING DESCR: CMU CONDITION

PROJECT: EFJ-937-MD

LOCATION:

CUSTOMER:

PROJ. MGR:

DATE: 1/18/2017

CHK'D BY: NW

DRAWN BY: JG

ORDER NUMBER

P.O. NUMBER

DRAWING NUMBER

SHEET: 6 of 13

SCALE: 3/4"=1'-0"

EFJ-937-MD NOA

| REV. | DESCRIPTION | DATE | DRAWN BY |
|------|--------------------------|------------|----------|
| 5 | UPDATED LABEL DETAIL | 11/2/2021 | NWW |
| 3 | UPDATED ANCHORAGE DESIGN | 3/24/2021 | JG |
| 2 | REVISED PER MARKUPS | 12/18/2017 | JG |
| 1 | INITIAL RELEASE | 1/18/2017 | JG |

MAX HOLE BREAKOUT:
15% OF MATERIAL THICKNESS

STEEL CONDITION

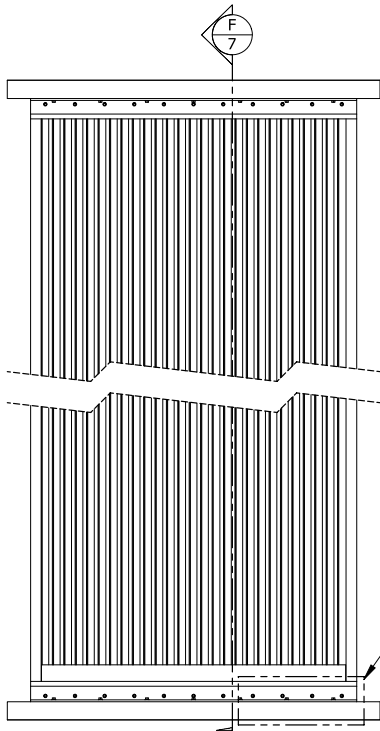
PRODUCT REVISED
 As complying with the Florida Building Code
 NOA-No. **23-1215.16**
 Expiration Date: **05/17/2028**
 By: *Manuel Jara*
 Miami-Dade Product Control

PRODUCT REVISED
 as complying with the Florida Building Code
 NOA-No. **21-1122.07**
 Expiration Date **05/17/2023**
 By: *R. Helmla*
 Miami-Dade Product Control

RICE

ENGINEERING
 105 School Creek Trail
 Luxemburg, WI 54217
 Phone: (920) 617-1042
 Fax: (920) 617-1100
 www.rice-inc.com
 Florida Firm No: F-01000005061
 Certificate of Authorization: #9090
 Wayne K. Helmla
 Registration No: 59092

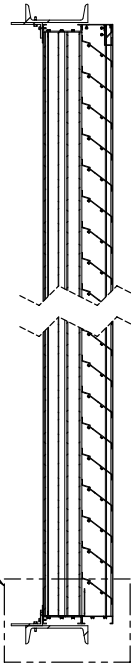
P.E. STAMP



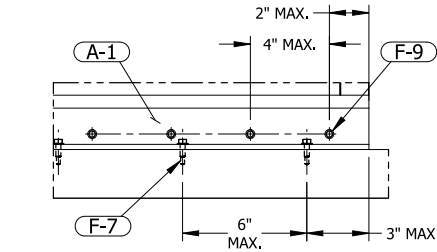
INTERIOR ELEVATION

PRODUCT RENEWED
 as complying with the Florida Building Code
 NOA-No. **23-0117.05**
 Expiration Date **05/17/2028**

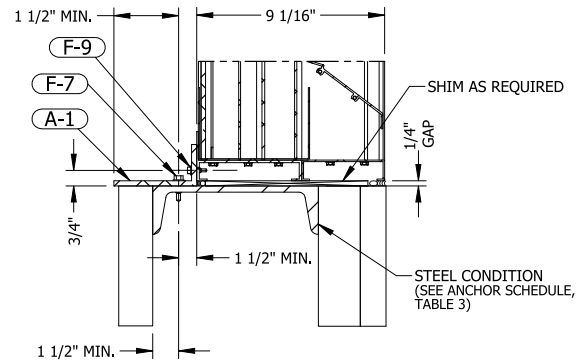
By: *R. Helmla*
 Miami-Dade Product Control



SECTION VIEW **F** STEEL CONDITION
 3/4"=1'-0" **7** 7



TOP & BTM MOUNT DETAIL **13** STEEL CONDITION
 2"=1'-0" **7** 7

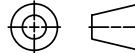


TOP & BTM MOUNT DETAIL **12** STEEL CONDITION
 2"=1'-0" **7** 7

UNLESS OTHERWISE SPECIFIED DIMENSION ARE IN INCHES.
 TOLERANCE UNLESS NOTED:
 X.X ±0.030
 X.XX ±0.015
 X.XXX ±0.010
 ANGLE ±1°
 FRACTION ±1/16

5101 Blue Mound Road
 Fort Worth, Texas 76106
 Phone: 817-509-2300
 Fax: 817-831-3110

THIRD ANGLE PROJECTION



PCI INDUSTRIES DOING BUSINESS AS

POTTORFF

DRAWING DESCR: STEEL CONDITION

PROJECT: EFJ-937-MD

LOCATION:

CUSTOMER:

PROJ. MGR:

DATE: 1/18/2017

CHK'D BY: NW

DRAWN BY: JG

ORDER NUMBER

P.O. NUMBER

DRAWING NUMBER

SHEET: 7 of 13

SCALE: 3/4"=1'-0"

EFJ-937-MD NOA

| REV. | DESCRIPTION | DATE | DRAWN BY |
|------|--------------------------|------------|----------|
| 5 | UPDATED LABEL DETAIL | 11/2/2021 | NWW |
| 3 | UPDATED ANCHORAGE DESIGN | 3/24/2021 | JG |
| 2 | REVISED PER MARKUPS | 12/18/2017 | JG |
| 1 | INITIAL RELEASE | 1/18/2017 | JG |

C:\Users\woodworth\Desktop\Miami-Dade Updates (2020)\EFJ-937-MD\EFJ-937-MD NOA Drawings (Rev. 3)

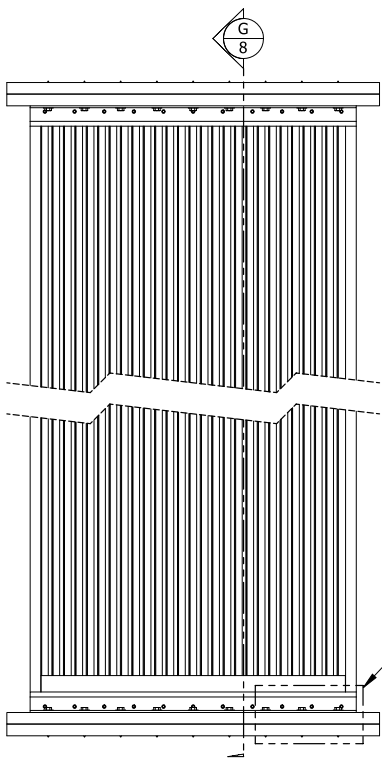
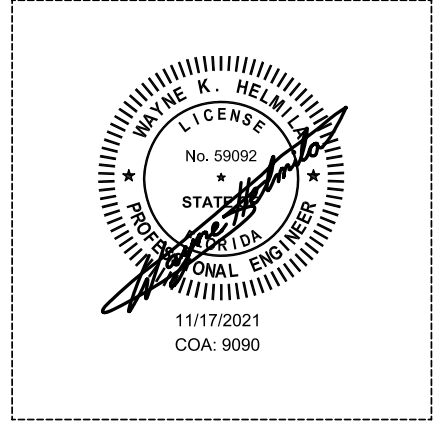
WOOD CONDITION

PRODUCT REVISED
 As complying with the Florida Building Code
 NOA-No. **23-1215.16**
 Expiration Date: **05/17/2028**
 By: *Manuel Perez*
 Miami-Dade Product Control

PRODUCT REVISED
 as complying with the Florida Building Code
 NOA-No. **21-1122.07**
 Expiration Date **05/17/2023**
 By: *Rice*
 Miami-Dade Product Control

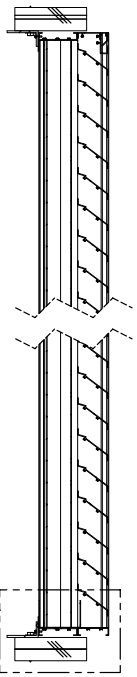
RICE
 ENGINEERING
 105 School Creek Trail
 Luxemburg, WI 54217
 Phone: (920) 617-1042
 Fax: (920) 617-1100
 www.rice-eng.com
 Florida Firm No: F-0100005061
 Certificate of Authorization: #9090
 Wayne K. Helmla
 Registration No: 59092

P.E. STAMP

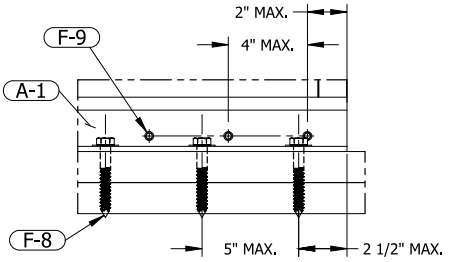


INTERIOR ELEVATION

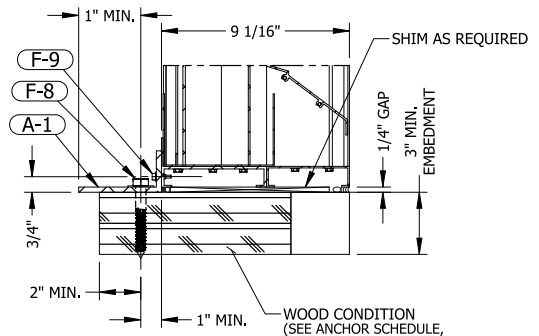
PRODUCT RENEWED
 as complying with the Florida Building Code
 NOA-No. **23-0117.05**
 Expiration Date **05/17/2028**
 By: *Rice*
 Miami-Dade Product Control



SECTION VIEW $\frac{G}{8}$ WOOD CONDITION
 3/4"=1'-0"



TOP & BTM MOUNT DETAIL $\frac{15}{8}$ WOOD CONDITION
 2"=1'-0"

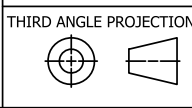


TOP & BTM MOUNT DETAIL $\frac{14}{8}$ WOOD CONDITION
 2"=1'-0"

| REV. | DESCRIPTION | DATE | DRAWN BY |
|------|--------------------------|------------|----------|
| 5 | UPDATED LABEL DETAIL | 11/2/2021 | NWW |
| 3 | UPDATED ANCHORAGE DESIGN | 3/24/2021 | JG |
| 2 | REVISED PER MARKUPS | 12/18/2017 | JG |
| 1 | INITIAL RELEASE | 1/18/2017 | JG |

UNLESS OTHERWISE SPECIFIED DIMENSION ARE IN INCHES.
 TOLERANCE UNLESS NOTED:
 X.X ±0.030
 X.XX ±0.015
 X.XXX ±0.010
 ANGLE ±1°
 FRACTION ±1/16
 MAX HOLE BREAKOUT:
 15% OF MATERIAL THICKNESS

5101 Blue Mound Road
 Fort Worth, Texas 76106
 Phone: 817-509-2300
 Fax: 817-831-3110



PCI INDUSTRIES DOING BUSINESS AS

POTTORFF

| | | | | |
|-------------------------------|-------------------|--------------|-------------|----------------|
| DRAWING DESCR: WOOD CONDITION | | | | |
| PROJECT: EFJ-937-MD | | | | |
| LOCATION: | | | | |
| CUSTOMER: | | | | |
| PROJ. MGR: | | DRAWN BY: JG | | |
| DATE: 1/18/2017 | CHK'D BY: NW | ORDER NUMBER | P.O. NUMBER | DRAWING NUMBER |
| SHEET: 8 of 13 | SCALE: 3/4"=1'-0" | | | EFJ-937-MD NOA |

C:\Users\inwoodworth\Desktop\Miami-Dade Updates (2020)\EFJ-937-MD\EFJ-937-MD NOA Drawings (Rev. 3)

PRODUCT RENEWED
as complying with the Florida
Building Code
NOA-No. **23-0117.05**

Expiration Date **05/17/2028**

By *[Signature]*
Miami-Dade Product Control

**SINGLE SECTION WIDE X SINGLE-SECTION HIGH
FLANGED ASSEMBLY WITH SLEEVE -
ALL CONDITIONS**

PRODUCT REVISED
As complying with the Florida
Building Code
NOA-No. **23-1215.16**
Expiration Date: **05/17/2028**
By: *[Signature]*
Miami-Dade Product Control

PRODUCT REVISED
as complying with the Florida
Building Code
NOA-No. **21-1122.07**
Expiration Date **05/17/2023**
By: *[Signature]*
Miami-Dade Product Control

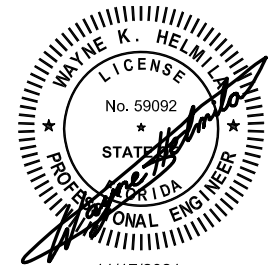
RICE

ENGINEERING

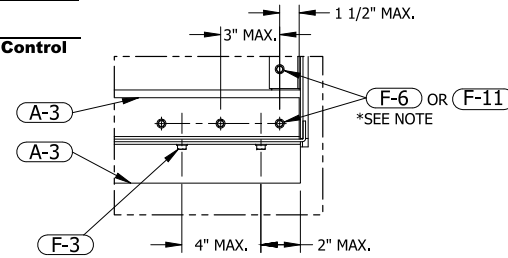
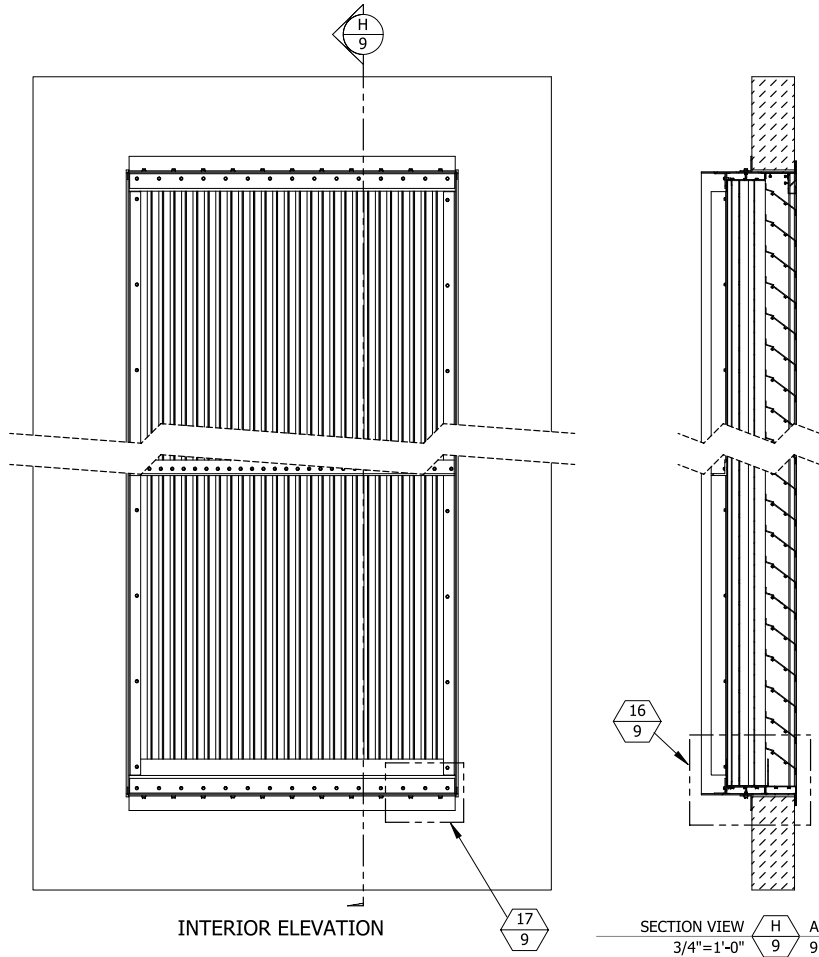
105 School Creek Trail
Luxemburg, WI 54217
Phone: (820) 617-1042
Fax: (920) 617-1100
www.rice-inc.com

Florida Firm No: F-01000005061
Certificate of Authorization: #9090
Wayne K. Helmla
Registration No: 59092

P.E. STAMP

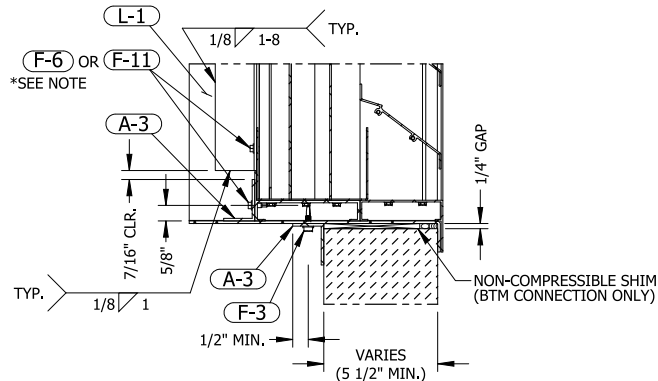


11/17/2021
COA: 9090



TOP & BTM MOUNT DETAIL $\frac{17}{9}$ ALL CONDITIONS
2"=1'-0" $\frac{9}{9}$

*NOTE: F-6 FASTENER REQUIRED FOR MARINE ENVIRONMENTS



TOP & BTM MOUNT DETAIL $\frac{16}{9}$ ALL CONDITIONS
2"=1'-0" $\frac{9}{9}$

*NOTE: F-6 FASTENER REQUIRED FOR MARINE ENVIRONMENTS

INTERIOR ELEVATION $\frac{17}{9}$

SECTION VIEW $\frac{H}{9}$ ALL CONDITIONS
3/4"=1'-0" $\frac{9}{9}$

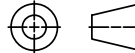
UNLESS OTHERWISE SPECIFIED
DIMENSION ARE IN INCHES.

TOLERANCE UNLESS NOTED:
X.X ±0.030
X.XX ±0.015
X.XXX ±0.010
ANGLE ±1°
FRACTION ±1/16

MAX HOLE BREAKOUT:
15% OF MATERIAL THICKNESS

5101 Blue Mound Road
Fort Worth, Texas 76106
Phone: 817-509-2300
Fax: 817-831-3110

THIRD ANGLE PROJECTION



PCI INDUSTRIES DOING BUSINESS AS

POTTORFF

DRAWING DESCR: SINGLE SEC. WIDE X SINGLE SEC. HIGH, SLEEVED - ALL CONDITIONS

PROJECT: EFJ-937-MD

LOCATION:

CUSTOMER:

PROJ. MGR:

DATE: 1/18/2017

CHK'D BY: NW

DRAWN BY: JG

ORDER NUMBER

P.O. NUMBER

DRAWING NUMBER

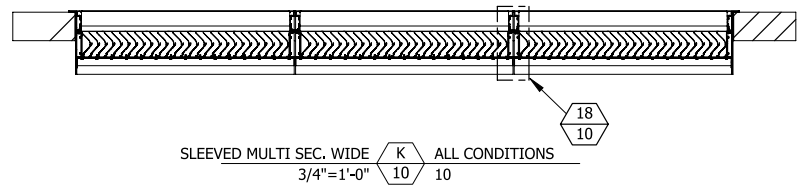
SHEET: 9 of 13

SCALE: 3/4"=1'-0"

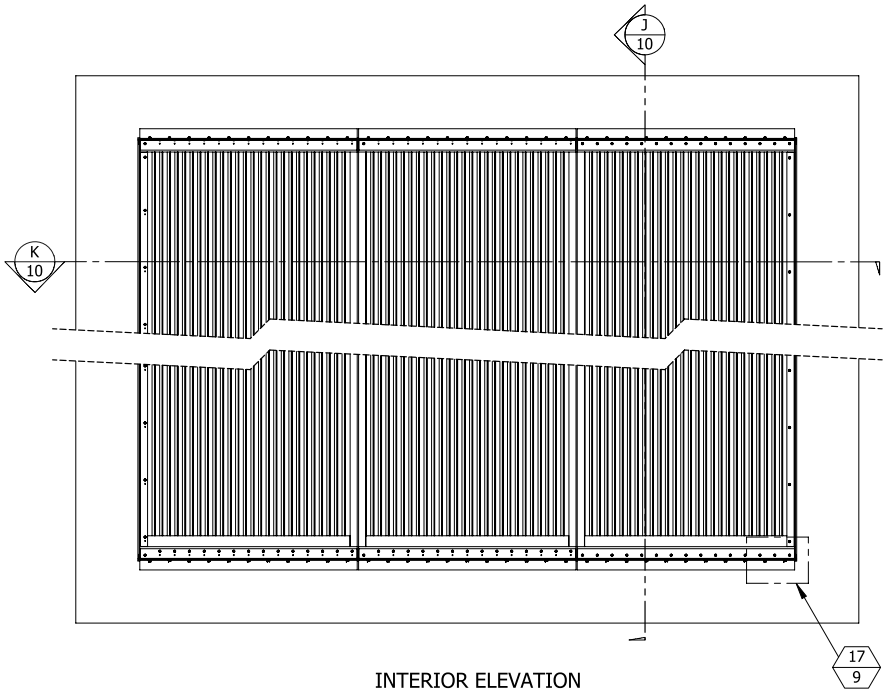
EFJ-937-MD NOA

| REV. | DESCRIPTION | DATE | DRAWN BY |
|------|--------------------------|------------|----------|
| 5 | UPDATED LABEL DETAIL | 11/2/2021 | NWW |
| 3 | UPDATED ANCHORAGE DESIGN | 3/24/2021 | JG |
| 2 | REVISED PER MARKUPS | 12/18/2017 | JG |
| 1 | INITIAL RELEASE | 1/18/2017 | JG |

C:\Users\inwoodworth\Desktop\Miami-Dade Updates (2020)\EFJ-937-MD\EFJ-937-MD NOA Drawings (Rev. 3)



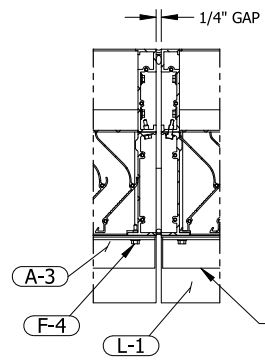
SLEEVED MULTI SEC. WIDE $\frac{K}{10}$ ALL CONDITIONS
3/4"=1'-0" $\frac{10}{10}$



INTERIOR ELEVATION

PRODUCT RENEWED
as complying with the Florida
Building Code
NOA-No. **23-0117.05**
Expiration Date **05/17/2028**
By *[Signature]*
Miami-Dade Product Control

**MULTI SECTION WIDE X SINGLE-SECTION HIGH
FLANGED ASSEMBLY WITH SLEEVE -
ALL CONDITIONS**

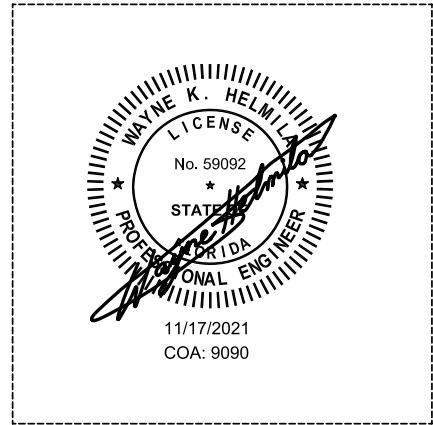


SLEEVED MULTI SEC. WIDE $\frac{18}{10}$ ALL CONDITIONS
2"=1'-0" $\frac{10}{10}$

PRODUCT REVISED
As complying with the Florida
Building Code
NOA-No. **23-1215.16**
Expiration Date: **05/17/2028**
By: *[Signature]*
Miami-Dade Product Control

PRODUCT REVISED
as complying with the Florida
Building Code
NOA-No. **21-1122.07**
Expiration Date **05/17/2023**
By *[Signature]*
Miami-Dade Product Control

P.E. STAMP



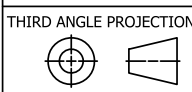
RICE
ENGINEERING
105 School Creek Trail
Luxemburg, WI 54217
Phone: (920) 617-1042
Fax: (920) 617-1100
www.rice-inc.com
Florida Firm No: F-01000005061
Certificate of Authorization: #9090
Wayne K. Helmla
Registration No: 59092

SLEEVED SINGLE SEC. HIGH $\frac{J}{10}$ ALL CONDITIONS
3/4"=1'-0" $\frac{10}{10}$

5101 Blue Mound Road
Fort Worth, Texas 76106
Phone: 817-509-2300
Fax: 817-831-3110

PCI INDUSTRIES DOING BUSINESS AS

POTTORFF



| | | | |
|---|-------------------|----------------|----------------|
| DRAWING DESCR: MULTI SEC. WIDE X SINGLE SEC. HIGH, SLEEVED - ALL CONDITIONS | | | |
| PROJECT: EFJ-937-MD | | | |
| LOCATION: | | | |
| CUSTOMER: | | | |
| PROJ. MGR: | DRAWN BY: JG | | |
| DATE: 1/18/2017 | CHK'D BY: NW | ORDER NUMBER | P.O. NUMBER |
| SHEET: 10 of 13 | SCALE: 1/2"=1'-0" | DRAWING NUMBER | |
| | | | EFJ-937-MD NOA |

| REV. | DESCRIPTION | DATE | DRAWN BY |
|------|--------------------------|------------|----------|
| 5 | UPDATED LABEL DETAIL | 11/2/2021 | NWW |
| 3 | UPDATED ANCHORAGE DESIGN | 3/24/2021 | JG |
| 2 | REVISED PER MARKUPS | 12/18/2017 | JG |
| 1 | INITIAL RELEASE | 1/18/2017 | JG |

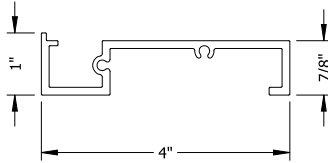
UNLESS OTHERWISE SPECIFIED
DIMENSION ARE IN INCHES.
TOLERANCE UNLESS NOTED:
X.X ±0.030
X.XX ±0.015
X.XXX ±0.010
ANGLE ±1°
FRACTION ±1/16
MAX HOLE BREAKOUT:
15% OF MATERIAL THICKNESS

PRODUCT RENEWED
as complying with the Florida
Building Code
NOA-No. **23-0117.05**

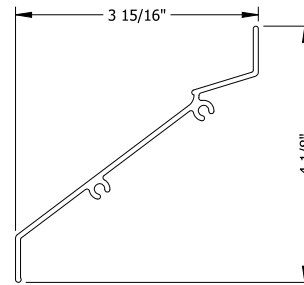
Expiration Date **05/17/2028**

By *RH*
Miami-Dade Product Control

PART NO: E-1
PART NAME: FRONT JAMB
MATERIAL: MINIMUM 0.125" THICK
6063-T6 EXTRUDED
ALUMINUM
SCALE: 6"=1'-0"

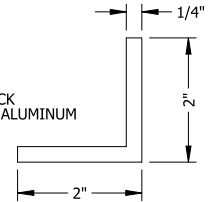


PART NO: E-5
PART NAME: FRONT BLADE
MATERIAL: MINIMUM 0.081" THICK
6063-T5 EXTRUDED
ALUMINUM
SCALE: 6"=1'-0"

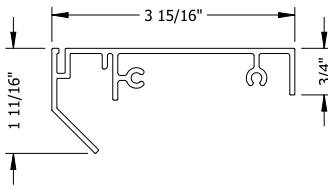


BILL OF MATERIALS

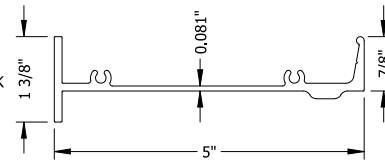
PART NO: E-12
PART NAME: BLADE STIFFENER
MATERIAL: MINIMUM 0.25" THICK
6063-T5 EXTRUDED ALUMINUM
SCALE: 6"=1'-0"



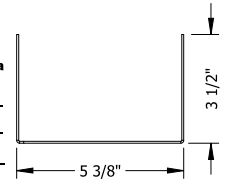
PART NO: E-2
PART NAME: FRONT HEAD
MATERIAL: MINIMUM 0.081" THICK
6063-T5 EXTRUDED
ALUMINUM
SCALE: 6"=1'-0"



PART NO: E-6
PART NAME: REAR JAMB
MATERIAL: MINIMUM 0.125" THICK
6063-T6 EXTRUDED
ALUMINUM
SCALE: 6"=1'-0"



PART NO: E-13
PART NAME: RAIN BAFFLE CHANNEL
MATERIAL: MINIMUM 0.063" THICK
5052-H32 FORMED ALUM.
SCALE: 3"=1'-0"

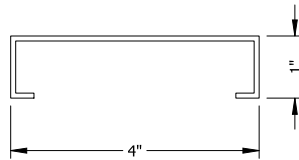


PRODUCT REVISED
as complying with the Florida
Building Code
NOA-No. **21-1122.07**

Expiration Date **05/17/2023**

By *RH*
Miami-Dade Product Control

PART NO: E-3
PART NAME: FRONT SILL
MATERIAL: MINIMUM 0.081" THICK
6063-T5 EXTRUDED
ALUMINUM
SCALE: 6"=1'-0"

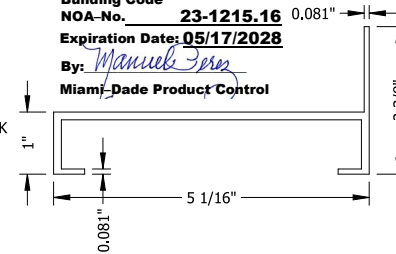


PRODUCT REVISED
As complying with the Florida
Building Code
NOA-No. **23-1215.16**

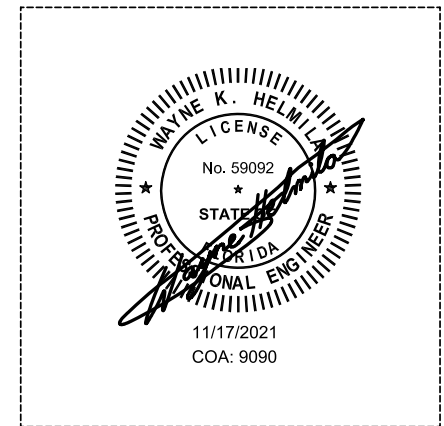
Expiration Date: **05/17/2028**

By: *Manuel Fern*
Miami-Dade Product Control

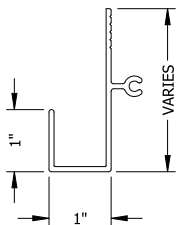
PART NO: E-7
PART NAME: REAR HEAD & SILL
MATERIAL: MINIMUM 0.125" THICK
6063-T6 EXTRUDED
ALUMINUM
SCALE: 6"=1'-0"



P.E. STAMP



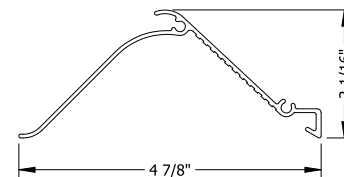
PART NO: E-4
PART NAME: RAIN DRIP
MATERIAL: MINIMUM 0.081" THICK
6063-T5 EXTRUDED
ALUMINUM
SCALE: 6"=1'-0"



RICE
ENGINEERING
105 School Creek Trail
Luxemburg, WI 54217
Phone: (920) 617-1042
Fax: (920) 617-1100
www.rice-inc.com

Florida Firm No: F-01000005061
Certificate of Authorization: #9090
Wayne K. Helmla
Registration No: 59092

PART NO: E-8
PART NAME: REAR BLADE
MATERIAL: MINIMUM 0.060" THICK
6063-T5 EXTRUDED
ALUMINUM
SCALE: 6"=1'-0"



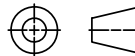
UNLESS OTHERWISE SPECIFIED
DIMENSION ARE IN INCHES.

TOLERANCE UNLESS NOTED:
X.X ±0.030
X.XX ±0.015
X.XXX ±0.010
ANGLE ±1°
FRACTION ±1/16

MAX HOLE BREAKOUT:
15% OF MATERIAL THICKNESS

5101 Blue Mound Road
Fort Worth, Texas 76106
Phone: 817-509-2300
Fax: 817-831-3110

THIRD ANGLE PROJECTION



PCI INDUSTRIES DOING BUSINESS AS

POTTORFF

DRAWING DESCR: BILL OF MATERIALS

PROJECT: EFJ-937-MD

LOCATION:

CUSTOMER:

PROJ. MGR:

DATE: 1/18/2017

CHK'D BY: NW

DRAWN BY: JG

ORDER NUMBER

P.O. NUMBER

DRAWING NUMBER

SHEET: 11 of 13

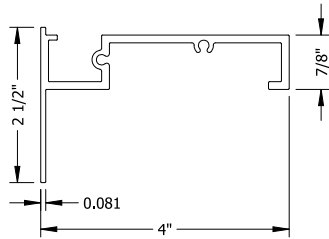
SCALE: AS NOTED

EFJ-937-MD NOA

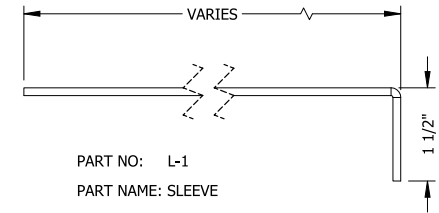
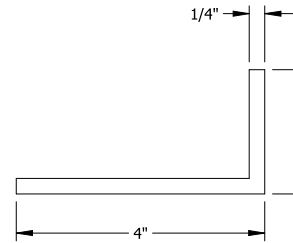
| REV. | DESCRIPTION | DATE | DRAWN BY |
|------|--------------------------|------------|----------|
| 5 | UPDATED LABEL DETAIL | 11/2/2021 | NWW |
| 3 | UPDATED ANCHORAGE DESIGN | 3/24/2021 | JG |
| 2 | REVISED PER MARKUPS | 12/18/2017 | JG |
| 1 | INITIAL RELEASE | 1/18/2017 | JG |

BILL OF MATERIALS

PART NO: E-9
 PART NAME: FRONT JAMB, FLANGED
 MATERIAL: MINIMUM 0.125" THICK 6063-T6 EXTRUDED ALUMINUM
 SCALE: 6"=1'-0"

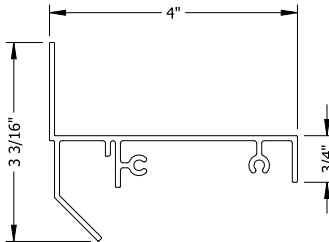


PART NO: A-1
 PART NAME: MOUNTING ANGLE
 MATERIAL: 4" X 2" X 1/4" CONTINUOUS 6063-T5 EXTRUDED ALUMINUM
 SCALE: 6"=1'-0"

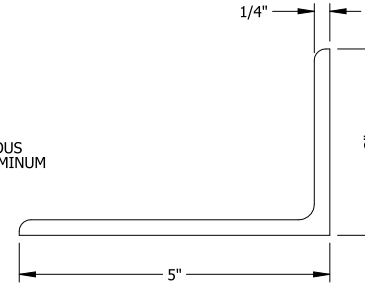


PART NO: L-1
 PART NAME: SLEEVE
 MATERIAL: 0.125" THICK 5052-H32 SHEET ALUM.
 SCALE: 6"=1'-0"

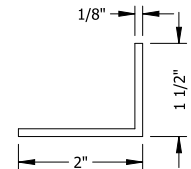
PART NO: E-10
 PART NAME: FRONT HEAD, FLANGED
 MATERIAL: MINIMUM 0.081" THICK 6063-T5 EXTRUDED ALUMINUM
 SCALE: 6"=1'-0"



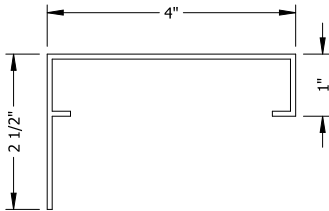
PART NO: A-2
 PART NAME: SECONDARY ANGLE
 MATERIAL: 5" X 3" X 1/4" CONTINUOUS 6061-T6 EXTRUDED ALUMINUM
 SCALE: 6"=1'-0"



PART NO: A-3
 PART NAME: CONTINUOUS SLEEVE ANGLE
 MATERIAL: 2" X 1 1/2" X 1/8" CONTINUOUS 6061-T6 EXTRUDED ALUMINUM
 SCALE: 6"=1'-0"



PART NO: E-11
 PART NAME: FRONT SILL, FLANGED
 MATERIAL: MINIMUM 0.081" THICK 6063-T5 EXTRUDED ALUMINUM
 SCALE: 6"=1'-0"



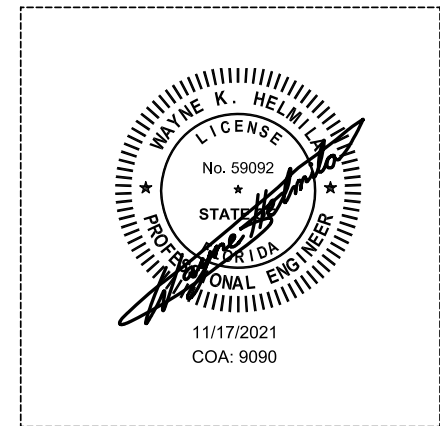
PRODUCT RENEWED
 as complying with the Florida Building Code
NOA-No. 23-0117.05
 Expiration Date **05/17/2028**
 By *[Signature]*
Miami-Dade Product Control

PRODUCT REVISED
 As complying with the Florida Building Code
NOA-No. 23-1215.16
 Expiration Date: **05/17/2028**
 By: *Manuel Ferrer*
Miami-Dade Product Control

PRODUCT REVISED
 as complying with the Florida Building Code
NOA-No. 21-1122.07
 Expiration Date **05/17/2023**
 By *[Signature]*
Miami-Dade Product Control

RICE
 ENGINEERING
 105 School Creek Trail
 Luxenburg, WI 54217
 Phone: (920) 617-1042
 Fax: (920) 617-1100
 www.rice-inc.com
 Florida Firm No: F-01000005061
 Certificate of Authorization: #9090
 Wayne K. Helmila
 Registration No: 59092

P.E. STAMP



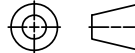
C:\Users\inwoodworth\Desktop\Miami-Dade Updates (2020)\EFJ-937-MD\EFJ-937-MD NOA Drawings (Rev. 3)

UNLESS OTHERWISE SPECIFIED DIMENSION ARE IN INCHES.
 TOLERANCE UNLESS NOTED:
 X.X ±0.030
 X.XX ±0.015
 X.XXX ±0.010
 ANGLE ±1°
 FRACTION ±1/16

MAX HOLE BREAKOUT:
 15% OF MATERIAL THICKNESS

5101 Blue Mound Road
 Fort Worth, Texas 76106
 Phone: 817-509-2300
 Fax: 817-831-3110

THIRD ANGLE PROJECTION



PCI INDUSTRIES DOING BUSINESS AS

POTTORFF

DRAWING DESCR: BILL OF MATERIALS

PROJECT: EFJ-937-MD

LOCATION:

CUSTOMER:

PROJ. MGR:

DATE: 1/18/2017

SHEET: 12 of 13

DRAWN BY: JG

CHK'D BY: NW

SCALE: AS NOTED

ORDER NUMBER

P.O. NUMBER

DRAWING NUMBER

EFJ-937-MD NOA

| REV. | DESCRIPTION | DATE | DRAWN BY |
|------|--------------------------|------------|----------|
| 5 | UPDATED LABEL DETAIL | 11/2/2021 | NWW |
| 3 | UPDATED ANCHORAGE DESIGN | 3/24/2021 | JG |
| 2 | REVISED PER MARKUPS | 12/18/2017 | JG |
| 1 | INITIAL RELEASE | 1/18/2017 | JG |

BILL OF MATERIALS

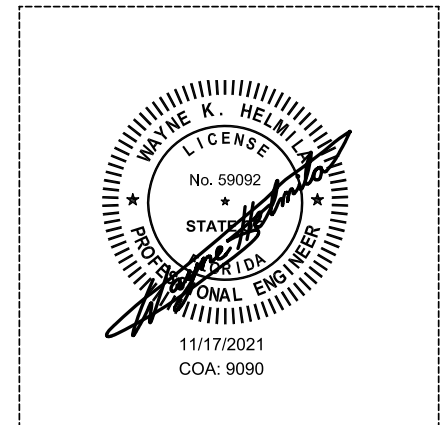
PRODUCT REVISED
 As complying with the Florida
 Building Code
 NOA-No. 23-1215.16
 Expiration Date: 05/17/2028
 By: Manuel Fern
 Miami-Dade Product Control

PRODUCT REVISED
 as complying with the Florida
 Building Code
 NOA-No. 21-1122.07
 Expiration Date 05/17/2023
 By: Manuel Fern
 Miami-Dade Product Control

RICE
 ENGINEERING
 105 School Creek Trail
 Luxemburg, WI 54217
 Phone: (920) 617-1042
 Fax: (920) 617-1100
 www.rice-inc.com
 Florida Firm No: F-01000005061
 Certificate of Authorization: #9090
 Wayne K. Helmla
 Registration No: 59092

| MISCELLANEOUS FASTENERS | |
|-------------------------|---|
| PART NO | DESCRIPTION |
| F-1 | #10-24 X 3/4" LONG, HWH, 410 SST, "F" POINT MACHINE SCREW |
| F-2 | #10-16 x 3" LONG, HWH, 410 SST, SELF-DRILLING TEK SCREW |
| F-3 | 1/4-20 X 1" LONG, HWH, 18-8 SST, SELF-DRILLING TEK SCREW |
| F-4 | #12-14 X 3/4" LONG, HWH, 410 SST, SELF-DRILLING TEK SCREW |
| F-5 | 3/8" X 4" DEWALT SCREW-BOLT+ SCREW ANCHOR, GALV. FINISH |
| F-6 | #12-14 X 3/4" LONG, HWH, SELF-DRILLING SCREW, 300-SERIES SST |
| F-7 | 1/4-14 X 1" LONG, HWH, SELF-DRILLING SCREW, 300-SERIES SST |
| F-8 | 1/2" X 3-1/2" LAG BOLT W/FLAT WASHER, 300-SERIES SST |
| F-9 | #12-14 X 1" LONG, HWH, SELF-DRILLING SCREW, 300-SERIES SST |
| F-10 | 1/2" X 1/8" THICK POLYETHYLENE GASKET TAPE |
| F-11 | #12-14 X 3/4" LONG, HWH, SELF-DRILLING SCREW, ULTRA-CORROSION-RESISTANT COATED STEEL (ELCO DRIL-FLEX) |

P.E. STAMP



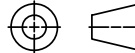
PRODUCT RENEWED
 as complying with the Florida
 Building Code
 NOA-No. 23-0117.05
 Expiration Date 05/17/2028
 By: Manuel Fern
 Miami-Dade Product Control

NOTE: ALL INSTALLATION FASTENERS AND ANCHORS SHALL BE OF CORROSION-RESISTANT STEEL (300-SERIES STAINLESS OR HOT-DIP GALVANIZED)

UNLESS OTHERWISE SPECIFIED
 DIMENSION ARE IN INCHES.
 TOLERANCE UNLESS NOTED:
 X.X ±0.030
 X.XX ±0.015
 X.XXX ±0.010
 ANGLE ±1°
 FRACTION ±1/16

5101 Blue Mound Road
 Fort Worth, Texas 76106
 Phone: 817-509-2300
 Fax: 817-831-3110

THIRD ANGLE PROJECTION



PCI INDUSTRIES DOING BUSINESS AS

POTTORFF

DRAWING DESCR: BILL OF MATERIALS

PROJECT: EFJ-937-MD

LOCATION:

CUSTOMER:

PROJ. MGR:

DATE: 1/18/2017

CHK'D BY: NW

SHEET: 13 of 13

SCALE: AS NOTED

DRAWN BY: JG

ORDER NUMBER

P.O. NUMBER

DRAWING NUMBER

EFJ-937-MD NOA

MAX HOLE BREAKOUT:
 15% OF MATERIAL THICKNESS

| REV. | DESCRIPTION | DATE | DRAWN BY |
|------|--------------------------|------------|----------|
| 5 | UPDATED LABEL DETAIL | 11/2/2021 | NWW |
| 3 | UPDATED ANCHORAGE DESIGN | 3/24/2021 | JG |
| 2 | REVISED PER MARKUPS | 12/18/2017 | JG |
| 1 | INITIAL RELEASE | 1/18/2017 | JG |