



DEPARTMENT OF REGULATORY AND ECONOMIC RESOURCES (RER)
BOARD AND CODE ADMINISTRATION DIVISION

NOTICE OF ACCEPTANCE (NOA)

MIAMI-DADE COUNTY
PRODUCT CONTROL SECTION

11805 SW 26 Street, Room 208
Miami, Florida 33175-2474
T (786) 315-2590 F (786) 315-2599

www.miamidade.gov/building

PCI Industries, LLC dba Pottorff
5101 Blue Mound Road
Fort Worth, TX 76106

SCOPE: This NOA is being issued under the applicable rules and regulations governing the use of construction materials. The documentation submitted has been reviewed and accepted by Miami-Dade County RER-Product Control Section to be used in Miami Dade County and other areas where allowed by the Authority Having Jurisdiction (AHJ).

This NOA shall not be valid after the expiration date stated below. The Miami-Dade County Product Control Section (In Miami Dade County) and/or the AHJ (in areas other than Miami Dade County) reserve the right to have this product or material tested for quality assurance purposes. If this product or material fails to perform in the accepted manner, the manufacturer will incur the expense of such testing and the AHJ may immediately revoke, modify, or suspend the use of such product or material within their jurisdiction. RER reserves the right to revoke this acceptance if it is determined by Miami-Dade County Product Control Section that this product or material fails to meet the requirements of the applicable building code.

This product is approved as described herein and has been designed to comply with the Florida Building Code, including the High Velocity Hurricane Zone.

DESCRIPTION: Model EFD- 635-MD Aluminum Louver

APPROVAL DOCUMENT: Drawing No. **EFD-635-MD NOA**, titled "EFD-635-MD", sheets 1 through 16 of 16, dated 03/22/23, with revision **1** dated TBD, prepared by the manufacturer, signed and sealed by Wayne K. Helmila, P.E., bearing the Miami-Dade County Product Control Revision stamp with the Notice of Acceptance number and expiration date by the Miami-Dade County Product Control Section.

MISSILE IMPACT RATING: Large and Small Missile Impact Resistant

LABELING: A permanent label with the manufacturer's name or logo, manufacturing plant's city, state, model/ series, and the statement reading: "Miami-Dade County Product Control Approved", is to be located on each unit.

RENEWAL of this NOA shall be considered after a renewal application has been filed and there has been no change in the applicable building code negatively affecting the performance of this product.

TERMINATION of this NOA will occur after the expiration date or if there has been a revision or change in the materials, use, and/or manufacture of the product or process. Misuse of this NOA as an endorsement of any product, for sales, advertising or any other purposes shall automatically terminate this NOA. Failure to comply with any section of this NOA shall be cause for termination and removal of NOA.


ADVERTISEMENT: The NOA number preceded by the words Miami-Dade County, Florida, and followed by the expiration date may be displayed in advertising literature. If any portion of the NOA is displayed, then it shall be done in its entirety.

INSPECTION: A copy of this entire NOA shall be provided to the user by the manufacturer or its distributors and shall be available for inspection at the job site at the request of the Building Official.

This NOA **revises NOA No. 23-0411.02** and consists of this page 1 and evidence pages E-1, E-2 and E-3, as well as approval document mentioned above.

The submitted documentation was reviewed by **Manuel Perez, P.E.**




2/15/24

NOA No. 23-1215.17
Expiration Date: June 22, 2028
Approval Date: February 22, 2024
Page 1

NOTICE OF ACCEPTANCE: EVIDENCE SUBMITTED

1. EVIDENCE SUBMITTED UNDER PREVIOUS NOA's

A. DRAWINGS

1. Manufacturer's die drawings and sections.
(Submitted under NOA No. 23-0411.02)
2. Drawing No. **EFD-635-MD NOA**, titled "EFD-635-MD", sheets 1 through 16 of 16, dated 03/22/23, with revision 1 dated TBD, prepared by the manufacturer, signed and sealed by Wayne K. Helmila, P.E.
(Submitted under NOA No. 23-0411.02)

B. TESTS

1. Test reports on: 1) Uniform Static Air Pressure Test, Loading per FBC, TAS 202-94
2) Large Missile Impact Test per FBC, TAS 201-94 (Level E, 80 fps)
3) Cyclic Wind Pressure Loading per FBC, TAS 203-94
along with installation diagram of a Model EFD-635-MD Aluminum Louvers, prepared by Quast Consulting & Testing, Inc, Test Report No. **QCT22-6847.02-R1**, dated 05/12/2023, signed and sealed by Arlen Fisher, P.E.
(Submitted under NOA No. 23-0411.02)
2. Test Reports on High Velocity Wind Driven Rain Resistance per AMCA 550-15 of a Model EFJ-937-MD Aluminum Louver, prepared by Intertek, Test Report No. **H4604.01-801-44**, dated 10/12/17, signed and sealed by Tyler Westerling, P.E.
(Submitted under NOA No. 23-0411.02)

C. CALCULATIONS

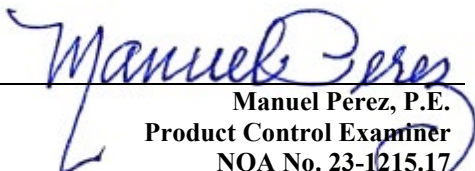
1. EFD-635-MD louver anchor calculations dated 03/08/23 and revised on 03/23/23, prepared by Rice Engineering, signed and sealed by Wayne K. Helmila, P.E.
(Submitted under NOA No. 23-0411.02)

D. QUALITY ASSURANCE

1. Miami-Dade Department of Regulatory and Economic Resources (RER)

E. MATERIAL CERTIFICATIONS

1. None.


Manuel Perez, P.E.
Product Control Examiner
NOA No. 23-1215.17
Expiration Date: June 22, 2028
Approval Date: February 22, 2024

NOTICE OF ACCEPTANCE: EVIDENCE SUBMITTED


1. EVIDENCE SUBMITTED UNDER PREVIOUS NOA's (CONTINUED)

F. STATEMENTS

1. Statement letter of conformance, complying with **FBC 7th Edition (2020)**, dated 05/18/23, issued by Rice Engineering, signed and sealed by Wayne K. Helmila, P.E. ***(Submitted under NOA No. 23-0411.02)***
2. Statement letter of no financial interest, dated 05/18/23, issued by Rice Engineering, signed and sealed by Wayne K. Helmila, P.E. ***(Submitted under NOA No. 23-0411.02)***

G. OTHERS

1. None.



Manuel Perez, P.E.

Product Control Examiner

NOA No. 23-1215.17

Expiration Date: June 22, 2028

Approval Date: February 22, 2024

NOTICE OF ACCEPTANCE: EVIDENCE SUBMITTED

2. NEW EVIDENCE SUBMITTED

A. DRAWINGS

1. None.

B. TESTS

1. None.

C. CALCULATIONS

1. None.

D. QUALITY ASSURANCE

1. Miami-Dade Department of Regulatory and Economic Resources (RER)

E. MATERIAL CERTIFICATIONS

1. None.

F. STATEMENTS

1. Statement letter of conformance, complying with **FBC 8th Edition (2023)**, issued by Rice Engineering, dated 11/28/23, signed and sealed by Wayne K. Helmila, P.E.

G. OTHERS

1. Notice of Acceptance No. **23-0411.02**, issued to PCI Industries, LLC d/b/a Pottorff for their Model EFD - 635-MD Aluminum Louver, approved on 06/22/23 and expiring on 06/22/28.



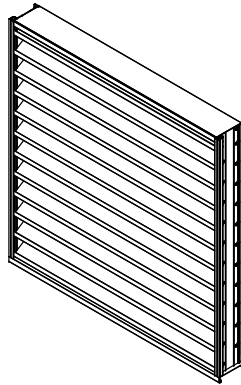
Manuel Perez, P.E.
Product Control Examiner
NOA No. 23-1215.17

Expiration Date: June 22, 2028
Approval Date: February 22, 2024

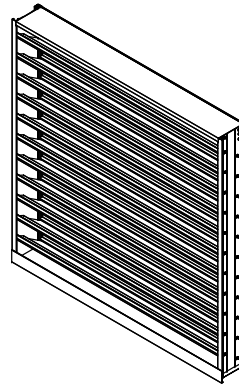
I:\Engineering Library\Engineering Projects\EP 22-11; EFD-635-MD\NOA Solid Models\

NOTES:

- THIS NOA DRAWING INCLUDES INSTALLATION DETAILS TO ATTAIN MAXIMUM DESIGN PRESSURES OF 150 PSF AS TESTED IN ACCORDANCE WITH PROTOCOLS TAS 201 (LARGE MISSILE IMPACT - LEVEL 'E', 80 FPS), TAS 202 (STATIC WIND PRESSURE), AND TAS 203 (CYCLIC WIND PRESSURE FOR USE WITHIN HIGH VELOCITY HURRICANE-AFFECTED ZONES DEFINED BY THE FLORIDA BUILDING CODE.
- ALL VARIATIONS ARE LARGE MISSILE IMPACT RESISTANT.
- UNITS OF MEASURE ARE FRACTIONAL INCHES UNLESS OTHERWISE SPECIFIED.
- IT IS ASSUMED THAT THE LOUVER SYSTEMS DO NOT SUPPORT ANY LOADS TRANSFERRED FROM THE BUILDING CONDITION.
- IT IS ASSUMED THAT THE BUILDING CONDITIONS ARE ADEQUATELY DESIGNED TO SUPPORT LOADS IMPARTED BY THE LOUVER SYSTEM.
- TO PREVENT GALVANIC CORROSION, ELECTROCHEMICALLY DISSIMILAR MATERIALS IN CONTACT WITH ONE ANOTHER SHALL BE PROTECTED BY PAINT, GASKETING OR OTHER MEANS PER THE FLORIDA BUILDING CODE.
- WATER PENETRATION: THE ROOM BEHIND THE LOUVER MUST BE DESIGNED TO DRAIN WATER PENETRATING INTO THE ROOM, AND THE ROOM MUST HOUSE WATER RESISTANT/WATERPROOF EQUIPMENT, COMPONENTS, OR SUPPLIES.
- OTHER BUILDING CONDITIONS THAN THOSE DENOTED CAN BE UTILIZED IF ANALYZED AND APPROVED BY A PROFESSIONAL ENGINEER.
- MULTI-SECTION HIGH LOUVER SYSTEMS ARE ALLOWABLE PROVIDED THE INDIVIDUAL SECTIONS ARE SUPPORTED PER THE DETAILS ON THIS DRAWING AND A SUITABLE SUPPORT STRUCTURE IS ANALYZED AND APPROVED BY A PROFESSIONAL ENGINEER.



EXTERIOR VIEW



INTERIOR VIEW

PRODUCT APPROVED
as complying with the Florida
Building Code

NOA-No. **23-0411.02**

Approval Date **06/22/2023**

By *[Signature]*
Miami-Dade Product Control

RICE

ENGINEERING

105 School Creek Trail
Luxemburg, WI 54217
Phone: (920) 617-1042
Fax: (920) 617-1100
www.rice-inc.com

Florida Firm No: F-01000005061
Certificate of Authorization: #9090
Wayne K. Helmila
Registration No: 59092

PRODUCT REVISED
As complying with the Florida
Building Code

NOA-No. **23-1215.17**

Expiration Date: **06/22/2028**

By: *[Signature]*
Miami-Dade Product Control

TABLE 1

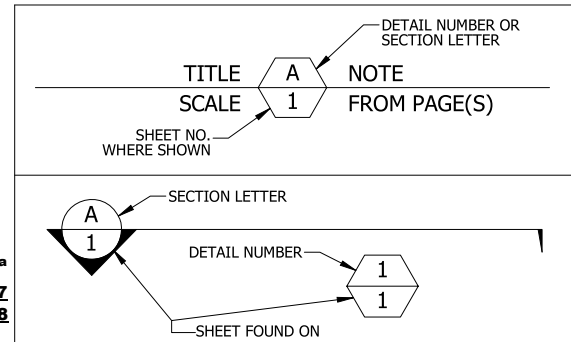
SINGLE SECTION SIZE LIMITATIONS

MAX DESIGN PRESSURE	MIN (W X H)	MAX (W X H)
±150 PSF	12 X 12	60 X 120

TABLE 2

MULTIPLE SECTION SIZE LIMITATIONS
(MAX DESIGN PRESSURE: ±150 PSF)

SINGLE SECTION HIGH - UNLIMITED WIDTH	SEE SHEET 6
SINGLE SECTION WIDE - UNLIMITED HEIGHT	SEE SHEET 5



P.E. STAMP

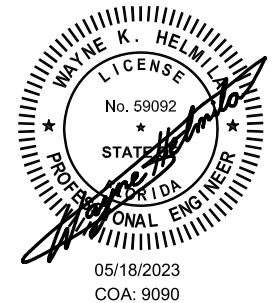


TABLE 3

ANCHOR SCHEDULE

SUBSTRATE	LOCATION	ANCHOR TYPE	MIN. EMBEDMENT	MIN. EDGE DISTANCE	SPACING (STANDARD)	SPACING (SHAPES)
CRACKED CONCRETE (f'c ≥ 4000 PSI)	JAMBS	3/8" X 4" DEWALT SCREW-BOLT+ (F-7)**	3 1/4"	1 5/8"	8"	8"
	MULLIONS (TENSION CONNECTION)	5/8" X 4" DEWALT SCREW-BOLT+ (F-8)**	3 1/4"	1 3/4"	7"	--
	MULLIONS (SHEAR CONNECTION)	5/8" X 6" DEWALT SCREW-BOLT+ (F-9)**	5"	5 7/8"	9"	--
GROUT FILLED CMU* (f'm ≥ 1500 PSI)	JAMBS	3/8" X 4" DEWALT SCREW-BOLT+ (F-7)**	3 1/4"	1 1/2" (1 3/4" FOR SHAPES)	5" (SHEAR) 4" (TENSION)	5 1/2"
	MULLIONS	3/8" X 4" DEWALT SCREW-BOLT+ (F-7)**	3 1/4"	1 1/2"	4"	--
STRUCTURAL STEEL (MIN. 3/16" THICK, Fy ≥ 36 KSI)	JAMBS	1/4" X 1" SELF-DRILLING SCREW (F-4)	FULL	1/2"	8"	10"
	MULLIONS	1/4" X 1" SELF-DRILLING SCREW (F-4); TWELVE (12) FASTENERS PER CONNECTION	FULL	1/2"	3/4"	--
	JAMBS	1/4" X 1" SELF-DRILLING SCREW (F-4)	FULL	1/2"	8"	10"
STEEL STUD (MIN. 12 GA, Fy ≥ 50 KSI)	MULLIONS	1/4" X 1" SELF-DRILLING SCREW (F-4); TWELVE (12) FASTENERS PER CONNECTION	FULL	1/2"	3/4"	--
	JAMBS	1/2" X 3 1/2" LAG BOLT WITH FLAT WASHER (F-12)	3"	2"	9"	10"
WOOD (S.G. ≥ 0.43)	MULLIONS	1/2" X 3 1/2" LAG BOLT WITH FLAT WASHER (F-12); TWELVE ANCHORS PER CONNECTION	3"	2"	2 1/2"	--

* GROUT FILLED CONCRETE MASONRY CONFORMING TO ASTM C90 TYPE IN MORTAR.

** SEAL DEWALT GALV. SCREW-BOLT+ANCHORS WITH LIQUID PROSCO FLASING OR EQUAL PRODUCT.

UNLESS OTHERWISE SPECIFIED
DIMENSIONS ARE IN INCHES.

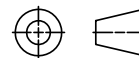
TOLERANCE UNLESS NOTED:
X.X ±0.060
X.XX ±0.030
X.XXX ±0.010
ANGLE ±1°
FRACTION ±1/16

MAX HOLE BREAKOUT:
15% OF MATERIAL THICKNESS

PCI INDUSTRIES DOING BUSINESS AS

POTTORFF

THIRD ANGLE PROJECTION



5101 Blue Mound Road
Fort Worth, Texas 76106
Phone: 817-509-2300
Fax: 817-831-3110

DRAWING DESCR:

COVER SHEETGENERAL LOUVER ASSEMBLY

PROJECT: EFD-635-MD

PROJ. MGR.: BAF

DATE: 3/22/2023

SHEET: 1 of 16

DRAWN BY: MSM

CHK'D BY: BAF

SCALE: NTS

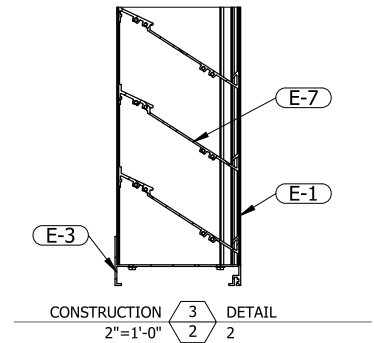
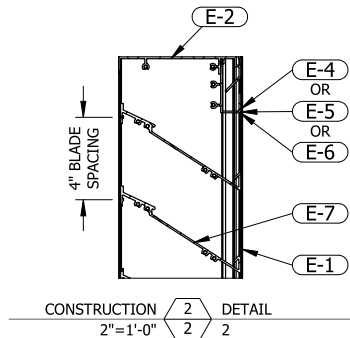
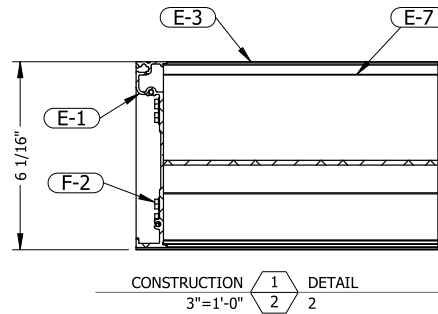
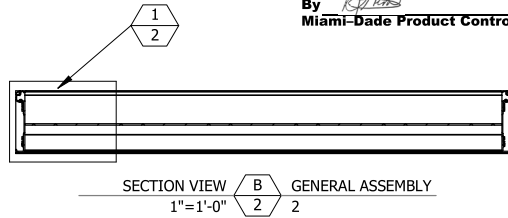
DRAWING NUMBER

EFD-635-MD NOA

1	INITIAL RELEASE	TBD	MSM
REV.	DESCRIPTION	DATE	DRAWN BY

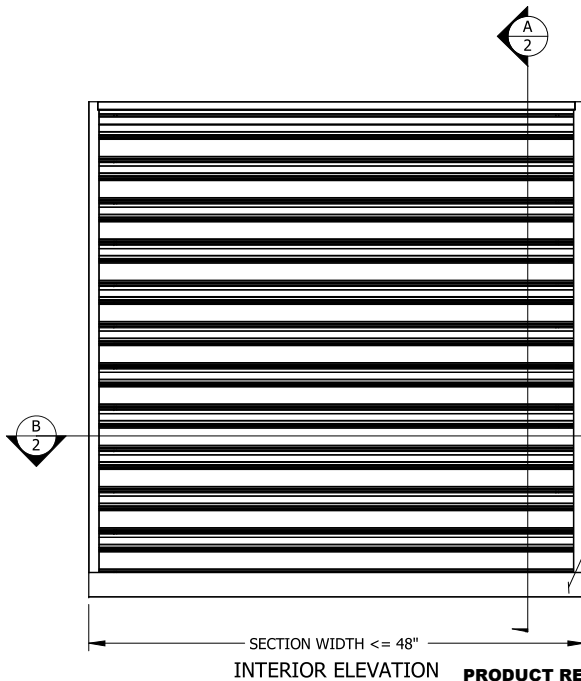
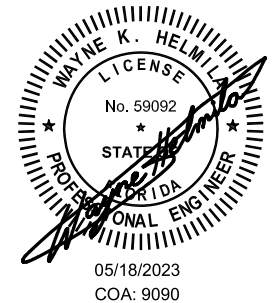
I:\Engineering Library\Engineering Projects\EP 22-11; EFD-635-MD\NOA\NOA Solid Models\

PRODUCT APPROVED
as complying with the Florida
Building Code
NOA-No. **23-0411.02**
Approval Date **06/22/2023**
By *[Signature]*
Miami-Dade Product Control



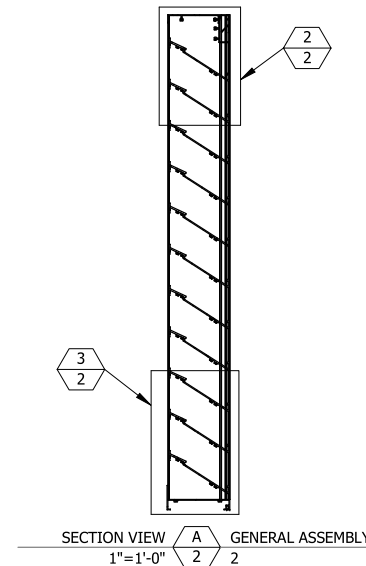
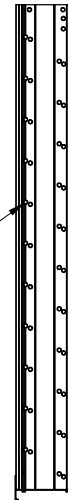
RICE
ENGINEERING
105 School Creek Trail
Luxemburg, WI 54217
Phone: (920) 617-1042
Fax: (920) 617-1100
www.rice-inc.com
Florida Firm No: F-01000005061
Certificate of Authorization: #9090
Wayne K. Helmila
Registration No: 59092

P.E. STAMP



QTY 4 SCREWS PER
BLADE CONNECTION

ENGRAVED LABEL DETAIL (TYP.)
PCI Industries LLC DBA Miami Dade County
POTTORFF Product Control
Ft Worth TX Approved
SO #123456



PRODUCT REVISED
As complying with the Florida
Building Code
NOA-No. **23-1215.17**
Expiration Date: **06/22/2028**
By: *[Signature]*
Miami-Dade Product Control

UNLESS OTHERWISE SPECIFIED
DIMENSIONS ARE IN INCHES.
TOLERANCE UNLESS NOTED:
X.X ±0.060
X.XX ±0.030
X.XXX ±0.010
ANGLE ±1°
FRACTION ±1/16
MAX HOLE BREAKOUT:
15% OF MATERIAL THICKNESS

PCI INDUSTRIES DOING BUSINESS AS
POTTORFF

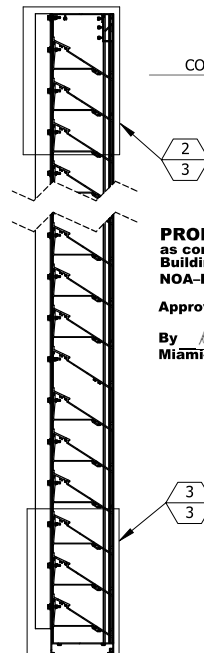
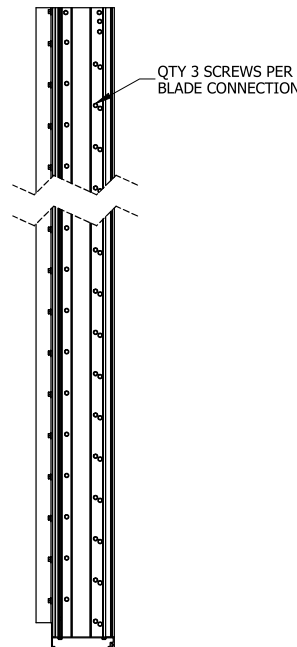
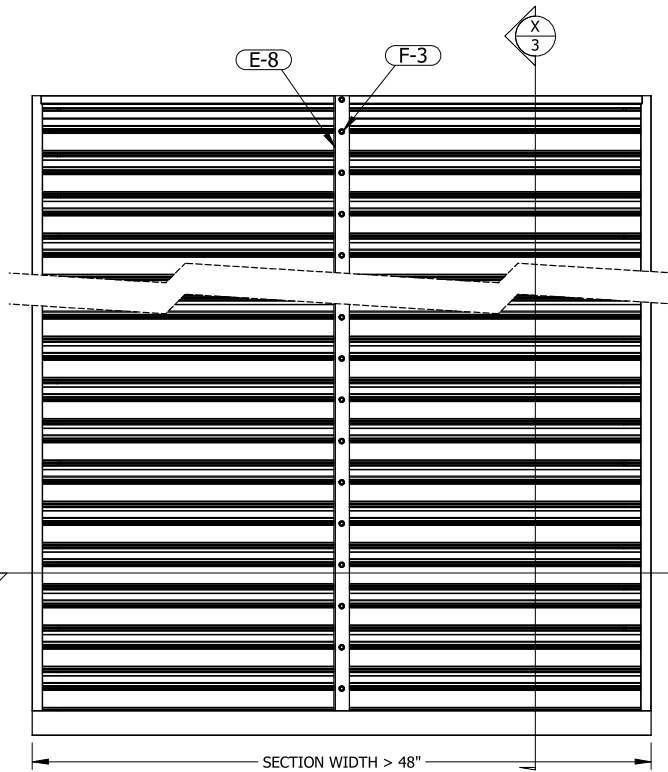
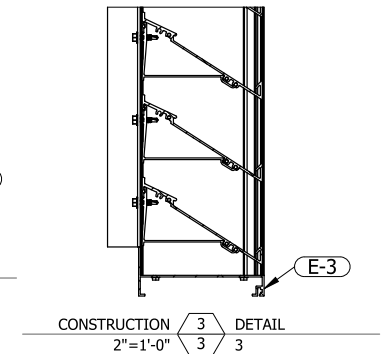
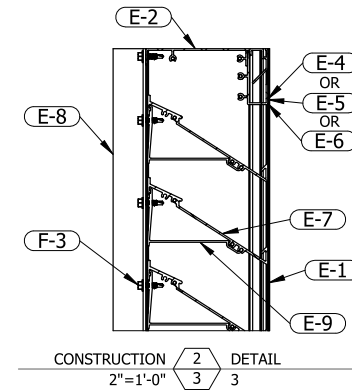
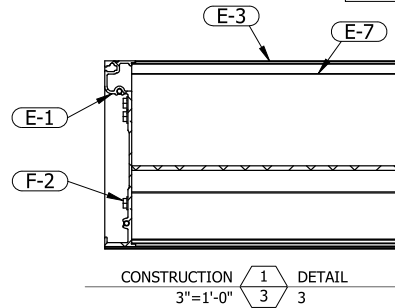
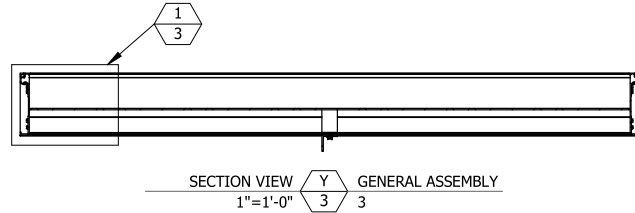
THIRD ANGLE PROJECTION

5101 Blue Mound Road
Fort Worth, Texas 76106
Phone: 817-509-2300
Fax: 817-831-3110

DRAWING DESCR:			
GENERAL LOUVER ASSEMBLY			
PROJECT: EFD-635-MD			
PROJ. MGR.: BAF		DRAWN BY: MSM	
DATE: 3/22/2023	CHK'D BY: BAF	DRAWING NUMBER	
SHEET: 2 of 16	SCALE: NTS	EFD-635-MD NOA	

1	INITIAL RELEASE	TBD	MSM
REV.	DESCRIPTION	DATE	DRAWN BY

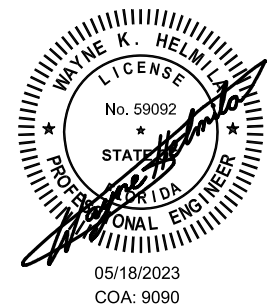
GENERAL LOUVER ASSEMBLY - WITH STIFFENER



PRODUCT APPROVED
as complying with the Florida
Building Code
NOA-No. **23-0411.02**
Approval Date **06/22/2023**
By *[Signature]*
Miami-Dade Product Control

RICE
ENGINEERING
105 School Creek Trail
Luxemburg, WI 54217
Phone: (920) 617-1042
Fax: (920) 617-1100
www.rice-inc.com
Florida Firm No: F-01000005061
Certificate of Authorization: #9090
Wayne K. Helmila
Registration No: 59092

P.E. STAMP



PRODUCT REVISED
As complying with the Florida
Building Code
NOA-No. **23-1215.17**
Expiration Date: **06/22/2028**
By: *[Signature]*
Miami-Dade Product Control

INTERIOR ELEVATION

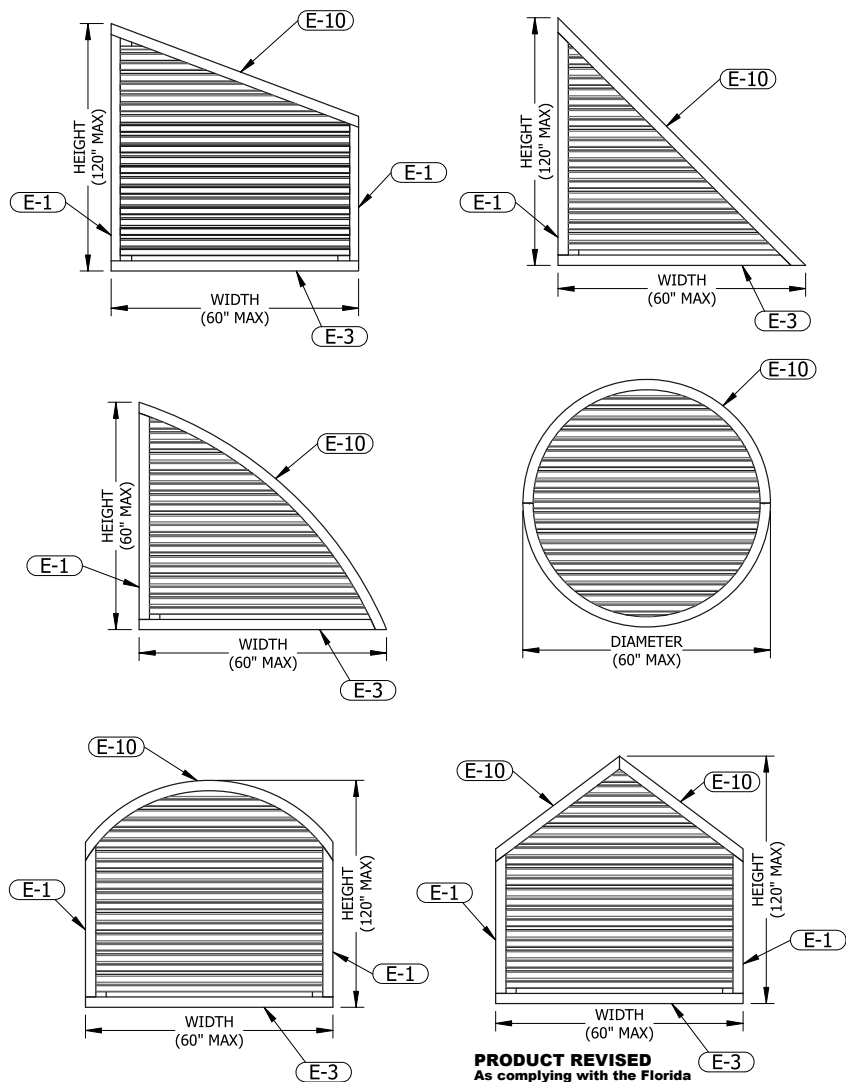
UNLESS OTHERWISE SPECIFIED
DIMENSIONS ARE IN INCHES.
TOLERANCE UNLESS NOTED:
X.X ±0.060
X.XX ±0.030
X.XXX ±0.010
ANGLE ±1°
FRACTION ±1/16
MAX HOLE BREAKOUT:
15% OF MATERIAL THICKNESS

PCI INDUSTRIES DOING BUSINESS AS
POTTORFF
THIRD ANGLE PROJECTION
5101 Blue Mound Road
Fort Worth, Texas 76106
Phone: 817-509-2300
Fax: 817-831-3110

DRAWING DESCR: GENERAL LOUVER ASSEMBLY			
PROJECT: EFD-635-MD			
PROJ. MGR.: BAF	DRAWN BY: MSM		
DATE: 3/22/2023	CHK'D BY: BAF	DRAWING NUMBER	
SHEET: 3 of 16	SCALE: NTS	EFD-635-MD NOA	

1	INITIAL RELEASE	TBD	BAF
REV.	DESCRIPTION	DATE	DRAWN BY

I:\Engineering Library\Engineering Projects\EP 22-11; EFD-635-MD\NOA\NOA Solid Models\



PRODUCT REVISED
As complying with the Florida
Building Code
NOA-No. **23-1215.17**
Expiration Date: **06/22/2028**
By: *Manuel Torres*
Miami-Dade Product Control

UNLESS OTHERWISE SPECIFIED
DIMENSIONS ARE IN INCHES.
TOLERANCE UNLESS NOTED:
X.X ±0.060
X.XX ±0.030
X.XXX ±0.010
ANGLE ±1°
FRACTION ±1/16
MAX HOLE BREAKOUT:
15% OF MATERIAL THICKNESS

PCI INDUSTRIES DOING BUSINESS AS

POTTORFF

THIRD ANGLE PROJECTION

5101 Blue Mound Road
Fort Worth, Texas 76106
Phone: 817-509-2300
Fax: 817-831-3110

SHAPED LOUVER DETAILS

QTY THREE (3)
PLACES EACH
BLADE END, ON
BACK SIDE

1/8" 1"

1/8" 1"

BACK BLADE FLANGE
TO JAMB FLANGE

1/8"

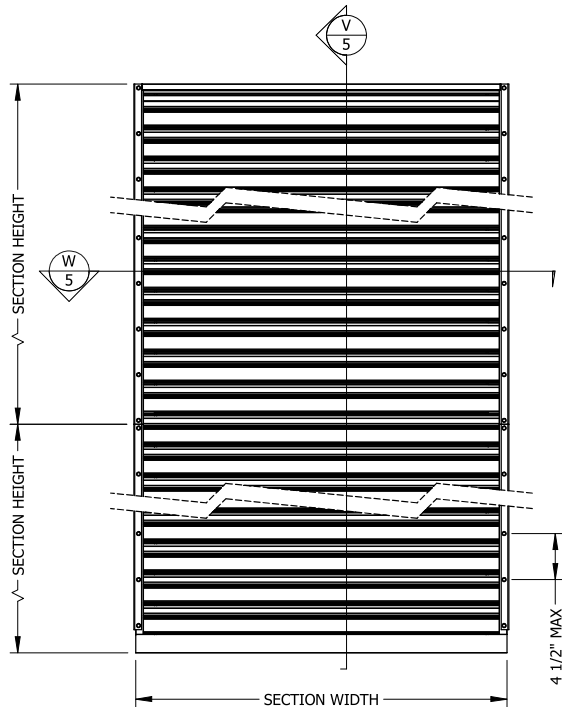
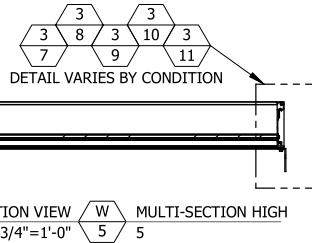
PRODUCT APPROVED
as complying with the Florida
Building Code
NOA-No. **23-0411.02**
Approval Date **06/22/2023**
By: *Manuel Torres*
Miami-Dade Product Control

P.E. STAMP

05/18/2023
COA: 9090

DRAWING DESCR: SHAPED LOUVER DETAILS			
PROJECT: EFD-635-MD			
PROJ. MGR.: BAF		DRAWN BY: MSM	
DATE: 3/22/2023	CHK'D BY: BAF	DRAWING NUMBER	
SHEET: 4 of 16	SCALE: NTS	EFD-635-MD NOA	

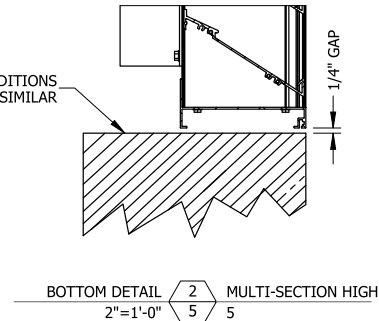
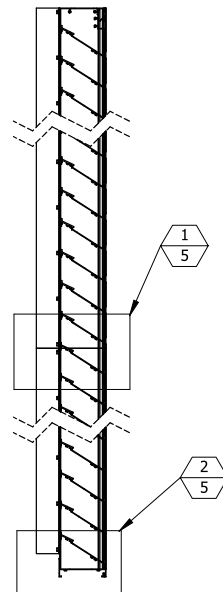
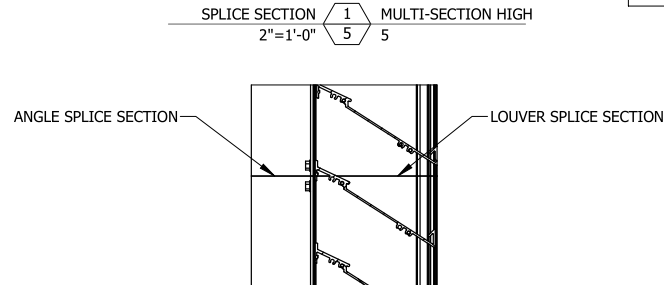
I:\Engineering Library\Engineering Projects\EP 22-11; EFD-635-MD\NOA Solid Models\



INTERIOR ELEVATION
QUANTITY SECTIONS WIDE IS UNLIMITED

PRODUCT REVISED
As complying with the Florida
Building Code
NOA-No. **23-1215.17**
Expiration Date: **06/22/2028**
By: *Manuel Fern*
Miami-Dade Product Control

1	INITIAL RELEASE	TBD	MSM
REV.	DESCRIPTION	DATE	DRAWN BY



MULTI-SECTION HIGH

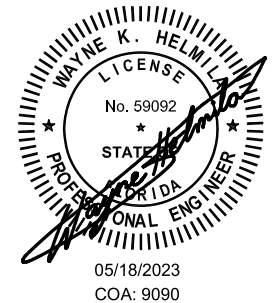
PRODUCT APPROVED
as complying with the Florida
Building Code
NOA-No. **23-0411.02**
Approval Date **06/22/2023**
By *[Signature]*
Miami-Dade Product Control

RICE
ENGINEERING

105 School Creek Trail
Luxemburg, WI 54217
Phone: (920) 617-1042
Fax: (920) 617-1100
www.rice-inc.com

Florida Firm No: F-01000005061
Certificate of Authorization: #9090
Wayne K. Helmla
Registration No: 59092

P.E. STAMP



UNLESS OTHERWISE SPECIFIED
DIMENSIONS ARE IN INCHES.

TOLERANCE UNLESS NOTED:
X.X ±0.060
X.XX ±0.030
X.XXX ±0.010
ANGLE ±1°
FRACTION ±1/16

MAX HOLE BREAKOUT:
15% OF MATERIAL THICKNESS

PCI INDUSTRIES DOING BUSINESS AS

POTTORFF

THIRD ANGLE PROJECTION



5101 Blue Mound Road
Fort Worth, Texas 76106
Phone: 817-509-2300
Fax: 817-831-3110

DRAWING DESCR: MULTI-SECTION HIGH

PROJECT: EFD-635-MD

PROJ. MGR.: BAF

DATE: 3/22/2023

SHEET: 5 of 16

CHK'D BY: BAF

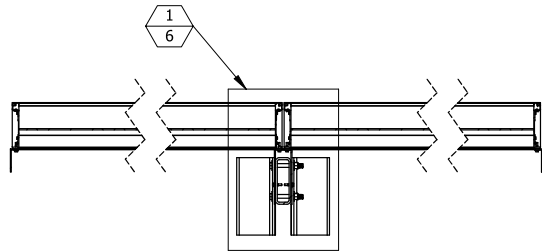
SCALE: NTS

DRAWN BY: MSM

DRAWING NUMBER

EFD-635-MD NOA

I:\Engineering Library\Engineering Projects\EP 22-11; EFD-635-MD\NOA Solid Models



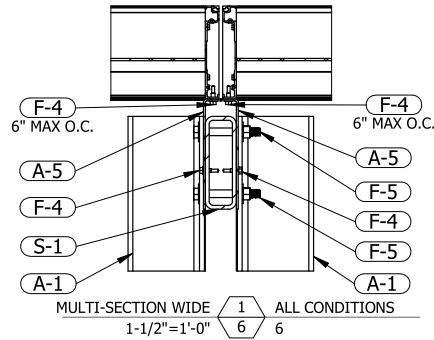
MULTI-SECTION WIDE

D
6

 ALL CONDITIONS
3/4"=1'-0"

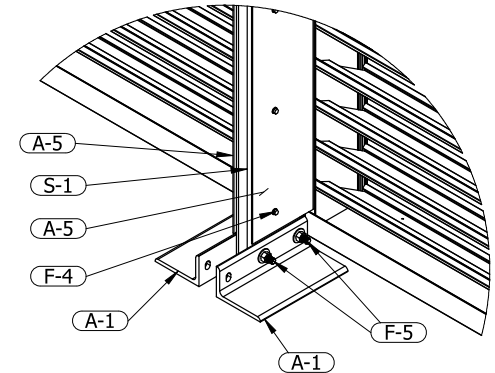
RICE ENGINEERING

105 School Creek Trail
Luxemburg, WI 54217
Phone: (920) 617-1042
Fax: (920) 617-1100
www.rice-inc.com
Florida Firm No: F-01000005061
Certificate of Authorization: #9090
Wayne K. Helmila
Registration No: 59092



QUANTITY SECTIONS WIDE IS UNLIMITED

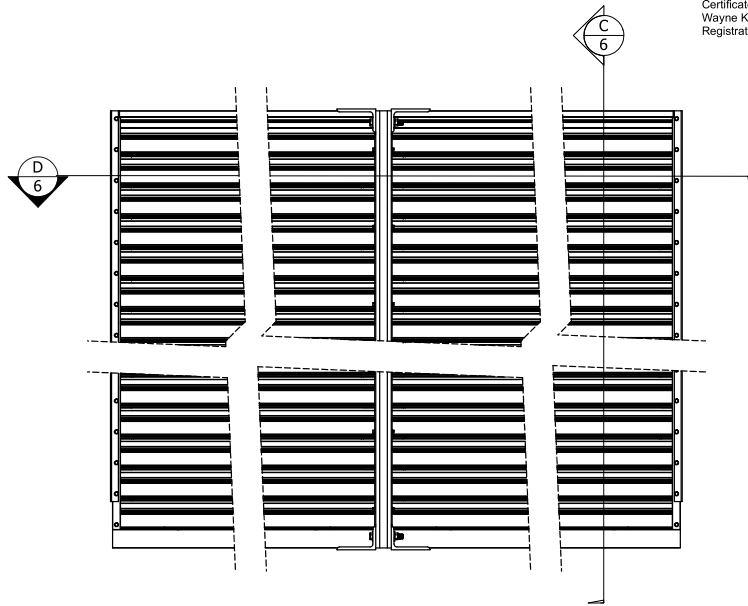
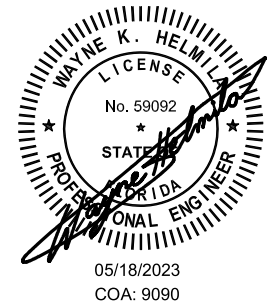
GENERAL MULLION DETAILS



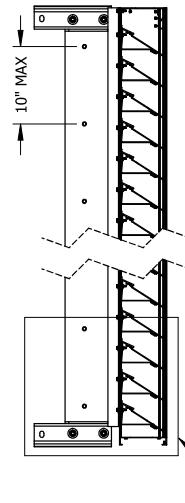
PRODUCT APPROVED
as complying with the Florida
Building Code
NOA-No. **23-0411.02**
Approval Date **06/22/2023**

By
Miami-Dade Product Control

P.E. STAMP



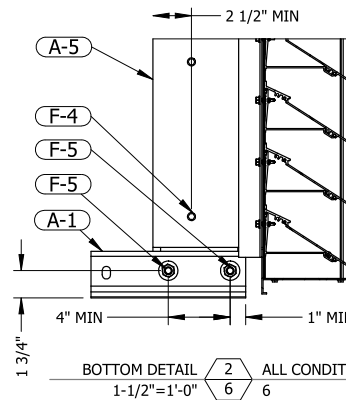
INTERIOR ELEVATION
QUANTITY SECTIONS WIDE IS UNLIMITED



MULTI-SECTION WIDE

C
6

 ALL CONDITIONS
3/4"=1'-0"



TOP CONNECTION SIMILAR

PRODUCT REVISED
As complying with the Florida
Building Code
NOA-No. **23-1215.17**
Expiration Date: **06/22/2028**
By:
Miami-Dade Product Control

UNLESS OTHERWISE SPECIFIED
DIMENSIONS ARE IN INCHES.

TOLERANCE UNLESS NOTED:
X.X ±0.060
X.XX ±0.030
X.XXX ±0.010
ANGLE ±1°
FRACTION ±1/16

MAX HOLE BREAKOUT:
15% OF MATERIAL THICKNESS

PCI INDUSTRIES DOING BUSINESS AS

POTTORFF

THIRD ANGLE PROJECTION



5101 Blue Mound Road
Fort Worth, Texas 76106
Phone: 817-509-2300
Fax: 817-831-3110

DRAWING DESCR: **GENERAL MULLION DETAILS**

PROJECT: EFD-635-MD

PROJ. MGR.: BAF

DATE: 3/22/2023

SHEET: 6 of 16

CHK'D BY: BAF

SCALE: NTS

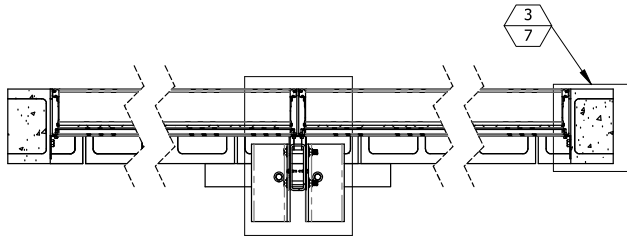
DRAWN BY: MSM

DRAWING NUMBER

EFD-635-MD NOA

1	INITIAL RELEASE	TBD	MSM
REV.	DESCRIPTION	DATE	DRAWN BY

I:\Engineering Library\Engineering Projects\EP 22-11; EFD-635-MD\NOA\NOA Solid Models\

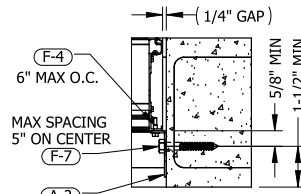


SECTION VIEW $\frac{A}{7}$ 7
3/4"=1'-0"

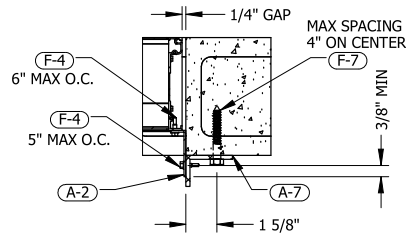
PRODUCT APPROVED
as complying with the Florida
Building Code
NOA-No. **23-0411.02**

Approval Date **06/22/2023**

By *[Signature]*
Miami-Dade Product Control

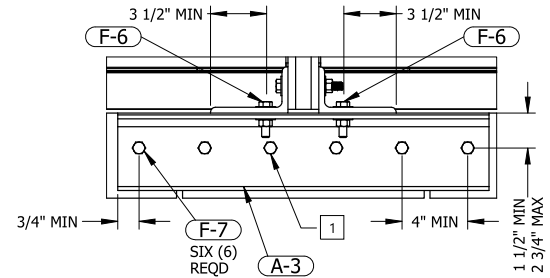


JAMB DETAIL $\frac{3}{7}$ 7
1-1/2"=1'-0" TENSION CONNECTION
TYPICAL OPP. HAND



JAMB DETAIL $\frac{3}{7}$ 7
3/4"=1'-0" SHEAR CONNECTION
TYPICAL OPP. HAND

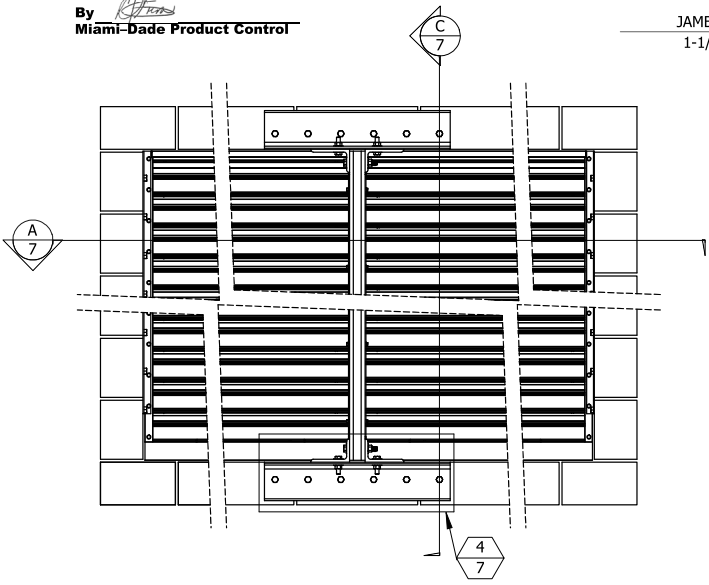
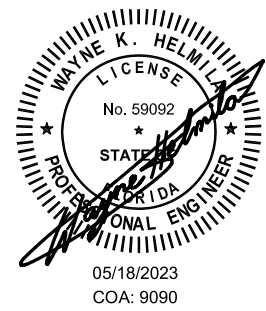
GROUT FILLED CMU CONDITION



MULLION INSTALLATION $\frac{4}{7}$ 7
1-1/2"=1'-0" GROUT FILLED CMU
TOP CONNECTION SIMILAR

RICE
ENGINEERING
105 School Creek Trail
Luxemburg, WI 54217
Phone: (920) 617-1042
Fax: (920) 617-1100
www.rice-inc.com
Florida Firm No: F-0100005061
Certificate of Authorization: #9090
Wayne K. Helmla
Registration No: 59092

P.E. STAMP



INTERIOR ELEVATION
QUANTITY SECTIONS WIDE IS UNLIMITED

PRODUCT REVISED
As complying with the Florida
Building Code
NOA-No. **23-1215.17**
Expiration Date: **06/22/2028**
By: *[Signature]*
Miami-Dade Product Control

UNLESS OTHERWISE SPECIFIED
DIMENSIONS ARE IN INCHES.

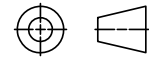
TOLERANCE UNLESS NOTED:
X.X ±0.060
X.XX ±0.030
X.XXX ±0.010
ANGLE ±1°
FRACTION ±1/16

MAX HOLE BREAKOUT:
15% OF MATERIAL THICKNESS

PCI INDUSTRIES DOING BUSINESS AS

POTTORFF

THIRD ANGLE PROJECTION



5101 Blue Mound Road
Fort Worth, Texas 76106
Phone: 817-509-2300
Fax: 817-831-3110

DRAWING DESCR:

GROUT FILLED CMU CONDITION

PROJECT: EFD-635-MD

PROJ. MGR.: BAF

DATE: 3/22/2023

SHEET: 7 of 16

CHK'D BY: BAF

SCALE: NTS

DRAWN BY: MSM

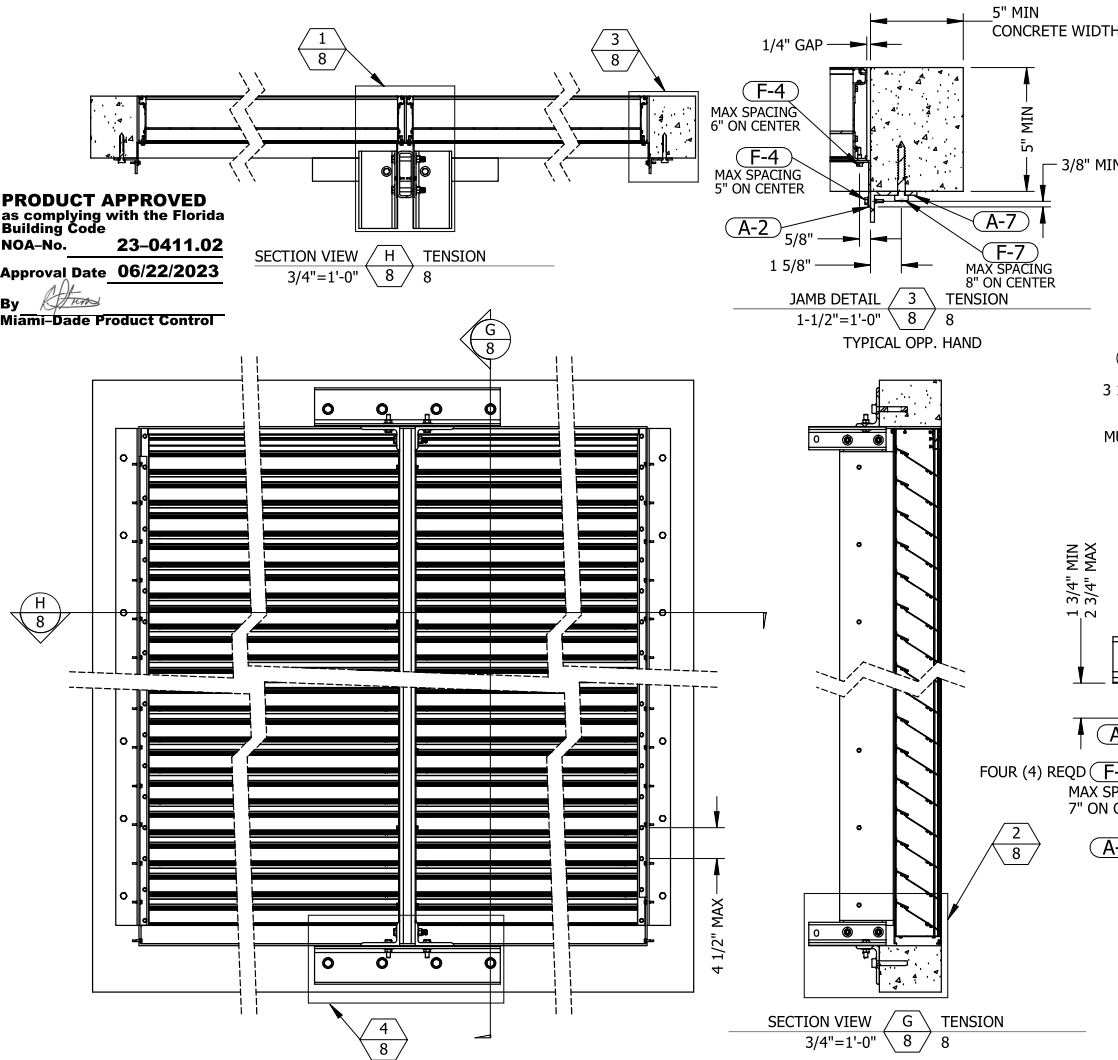
DRAWING NUMBER

EFD-635-MD NOA

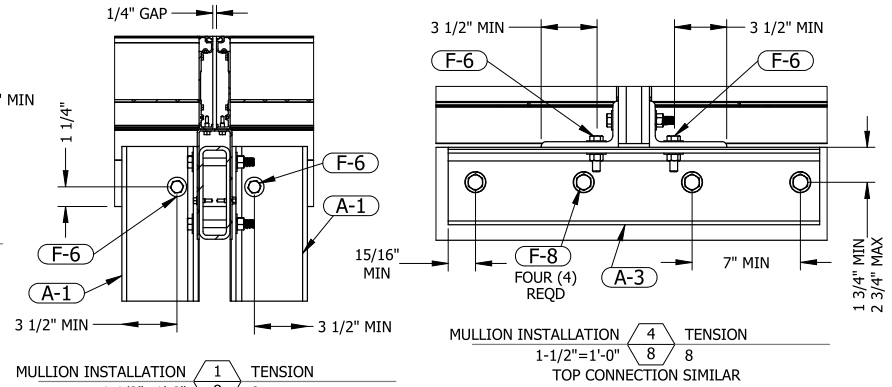
1	INITIAL RELEASE	TBD	MSM
REV.	DESCRIPTION	DATE	DRAWN BY

I:\Engineering Library\Engineering Projects\EP 22-11; EFD-635-MD\NOA\NOA Solid Models\

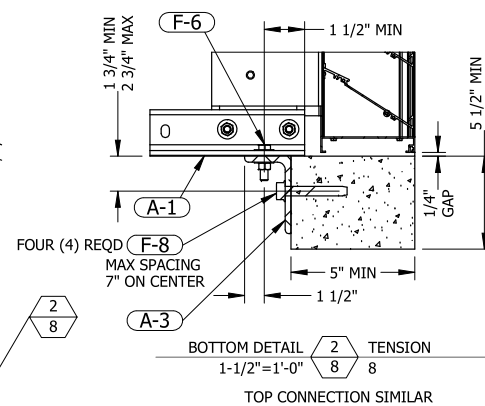
PRODUCT APPROVED
as complying with the Florida
Building Code
NOA-No. **23-0411.02**
Approval Date **06/22/2023**
By *[Signature]*
Miami-Dade Product Control



CONCRETE CONDITION TENSION CONNECTION



QUANTITY SECTIONS WIDE IS UNLIMITED



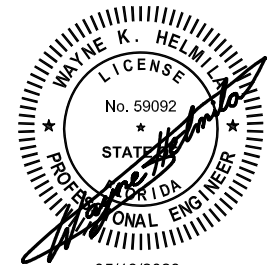
NOTES:
1 SEE SHEET 9 FOR SHEAR CONNECTION OPTION.

RICE
ENGINEERING

105 School Creek Trail
Luxemburg, WI 54217
Phone: (920) 617-1042
Fax: (920) 617-1100
www.rice-inc.com

Florida Firm No: F-0100005061
Certificate of Authorization: #9090
Wayne K. Helmla
Registration No: 59092

P.E. STAMP



05/18/2023
COA: 9090

INTERIOR ELEVATION
QUANTITY SECTIONS WIDE IS UNLIMITED

PRODUCT REVISED
As complying with the Florida
Building Code
NOA-No. **23-1215.17**
Expiration Date: **06/22/2028**
By: *[Signature]*
Miami-Dade Product Control

UNLESS OTHERWISE SPECIFIED
DIMENSIONS ARE IN INCHES.

TOLERANCE UNLESS NOTED:
X.X ±0.060
X.XX ±0.030
X.XXX ±0.010
ANGLE ±1°
FRACTION ±1/16

MAX HOLE BREAKOUT:
15% OF MATERIAL THICKNESS

PCI INDUSTRIES DOING BUSINESS AS

POTTORFF

THIRD ANGLE PROJECTION



5101 Blue Mound Road
Fort Worth, Texas 76106
Phone: 817-509-2300
Fax: 817-831-3110

DRAWING DESCR:
CONCRETE CONDITION TENSION CONNECTION

PROJECT: EFD-635-MD

PROJ. MGR.: BAF

DATE: 3/22/2023

SHEET: 8 of 16

CHK'D BY: BAF

SCALE: NTS

DRAWN BY: MSM

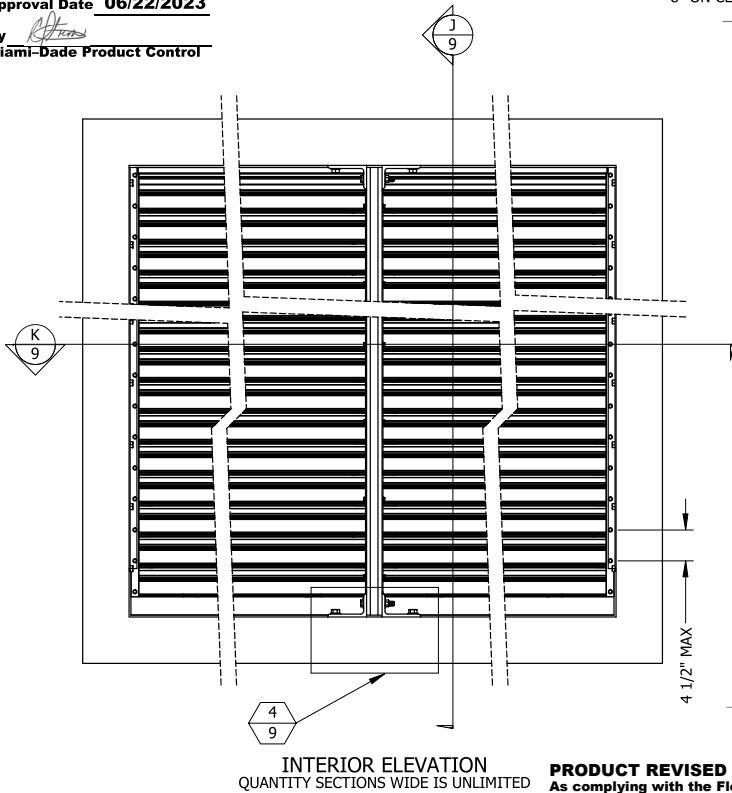
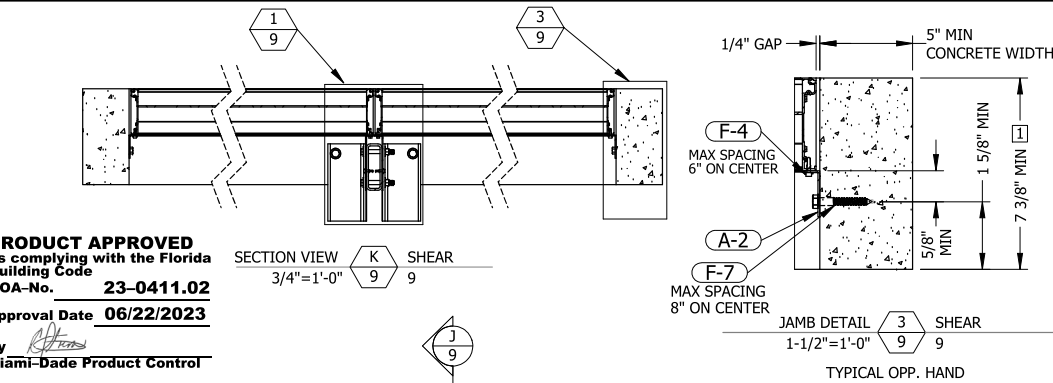
DRAWING NUMBER

EFD-635-MD NOA

1	INITIAL RELEASE	TBD	MSM
REV.	DESCRIPTION	DATE	DRAWN BY

I:\Engineering Library\Engineering Projects\EP 22-11; EFD-635-MD\NOA\NOA Solid Models\

PRODUCT APPROVED
as complying with the Florida
Building Code
NOA-No. **23-0411.02**
Approval Date **06/22/2023**
By *[Signature]*
Miami-Dade Product Control



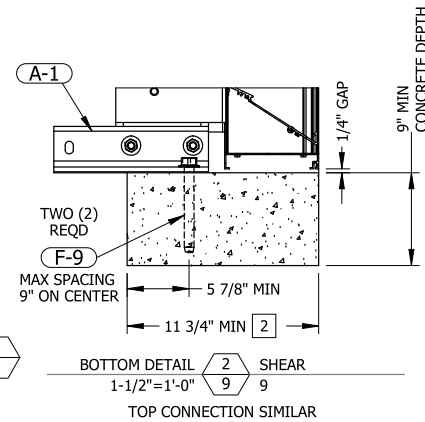
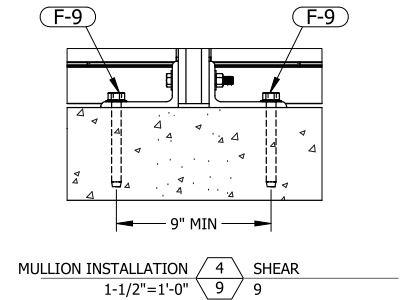
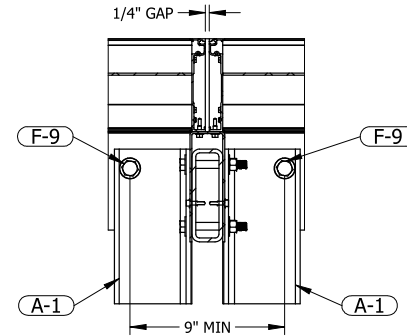
PRODUCT REVISED
As complying with the Florida
Building Code
NOA-No. **23-1215.17**
Expiration Date: **06/22/2028**
By: *Manuel Bern*
Miami-Dade Product Control

UNLESS OTHERWISE SPECIFIED
DIMENSIONS ARE IN INCHES.

TOLERANCE UNLESS NOTED:
X.X ±0.060
X.XX ±0.030
X.XXX ±0.010
ANGLE ±1°
FRACTION ±1/16

MAX HOLE BREAKOUT:
15% OF MATERIAL THICKNESS

CONCRETE CONDITION SHEAR CONNECTION



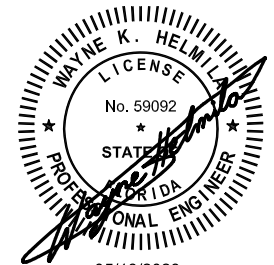
NOTES:

- SEE SHEET 8 FOR TENSION CONNECTION DETAILS WHEN CONCRETE CONDITION AT JAMB < 7 3/8" THICK.
- SEE SHEET 8 FOR SHEAR CONNECTION DETAILS WHEN CONCRETE CONDITION AT MULLION < 11 3/4" THICK.

RICE ENGINEERING

105 School Creek Trail
Luxemburg, WI 54217
Phone: (920) 617-1042
Fax: (920) 617-1100
www.rice-inc.com
Florida Firm No: F-0100005061
Certificate of Authorization: #9090
Wayne K. Helmla
Registration No: 59092

P.E. STAMP

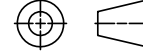


05/18/2023
COA: 9090

PCI INDUSTRIES DOING BUSINESS AS

POTTORFF

THIRD ANGLE PROJECTION



5101 Blue Mound Road
Fort Worth, Texas 76106
Phone: 817-509-2300
Fax: 817-831-3110

DRAWING DESCR:

CONCRETE CONDITION SHEAR CONNECTION

PROJECT: EFD-635-MD

PROJ. MGR.: BAF

DATE: 3/22/2023

SHEET: 9 of 16

CHK'D BY: BAF

SCALE: NTS

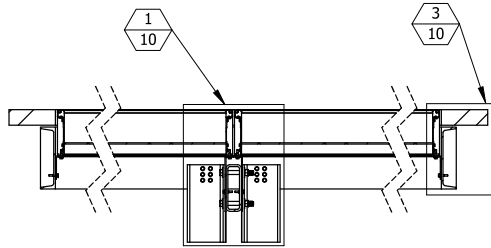
DRAWN BY: MSM

DRAWING NUMBER

EFD-635-MD NOA

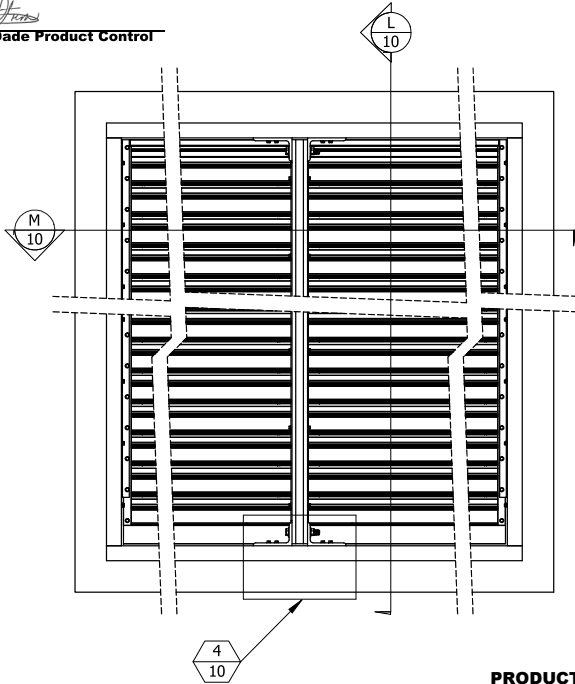
1	INITIAL RELEASE	TBD	MSM
REV.	DESCRIPTION	DATE	DRAWN BY

I:\Engineering Library\Engineering Projects\EP 22-11; EFD-635-MD\NOA\NOA Solid Models\



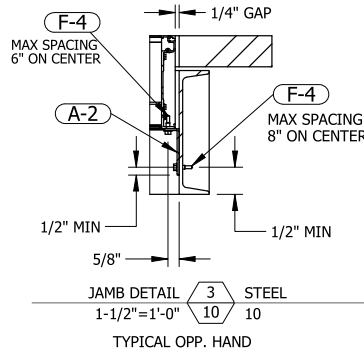
PRODUCT APPROVED
as complying with the Florida
Building Code
NOA-No. **23-0411.02**
Approval Date **06/22/2023**
By *Manuel Spr*
Miami-Dade Product Control

SECTION VIEW **1/10** STEEL
3/4"=1'-0"

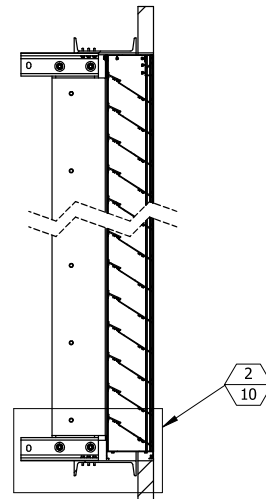


INTERIOR ELEVATION
QUANTITY SECTIONS WIDE IS UNLIMITED

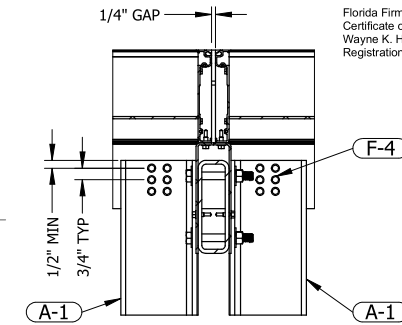
PRODUCT REVISED
As complying with the Florida
Building Code
NOA-No. **23-1215.17**
Expiration Date: **06/22/2028**
By: *Manuel Spr*
Miami-Dade Product Control



TYPICAL OPP. HAND

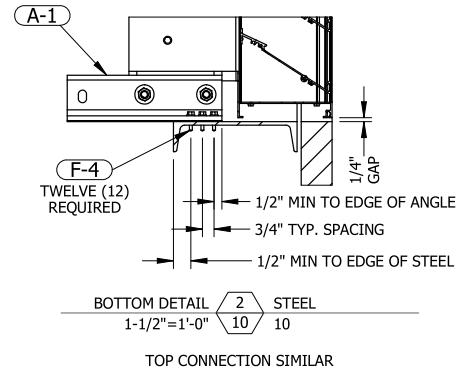


SECTION VIEW **2/10** STEEL
3/4"=1'-0"



MULLION INSTALLATION **1/10** STEEL
1-1/2"=1'-0"

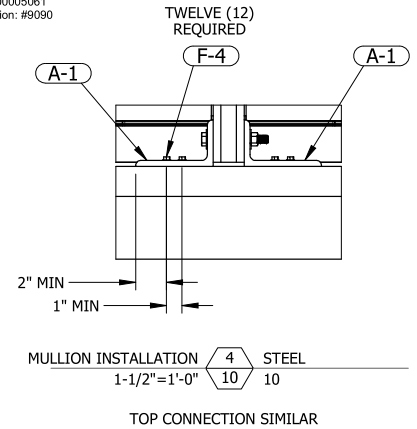
QUANTITY SECTIONS WIDE IS UNLIMITED



TOP CONNECTION SIMILAR

RICE
ENGINEERING
105 School Creek Trail
Luxemburg, FL 34217
Phone: (820) 617-1042
Fax: (820) 617-1100
www.rice-inc.com
Florida Firm No: F-01000005061
Certificate of Authorization: #9090
Wayne K. Helmila
Registration No: 59092

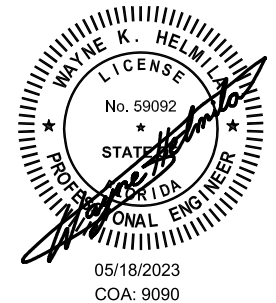
STEEL CONDITION



MULLION INSTALLATION **4/10** STEEL
1-1/2"=1'-0"

TOP CONNECTION SIMILAR

P.E. STAMP



1	INITIAL RELEASE	TBD	MSM
REV.	DESCRIPTION	DATE	DRAWN BY

UNLESS OTHERWISE SPECIFIED
DIMENSIONS ARE IN INCHES.

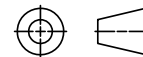
TOLERANCE UNLESS NOTED:
X.X ±0.060
X.XX ±0.030
X.XXX ±0.010
ANGLE ±1°
FRACTION ±1/16

MAX HOLE BREAKOUT:
15% OF MATERIAL THICKNESS

PCI INDUSTRIES DOING BUSINESS AS

POTTORFF

THIRD ANGLE PROJECTION



5101 Blue Mound Road
Fort Worth, Texas 76106
Phone: 817-509-2300
Fax: 817-831-3110

DRAWING DESCR: **STEEL CONDITION**

PROJECT: EFD-635-MD

PROJ. MGR.: BAF

DATE: 3/22/2023

SHEET: 10 of 16

CHK'D BY: BAF

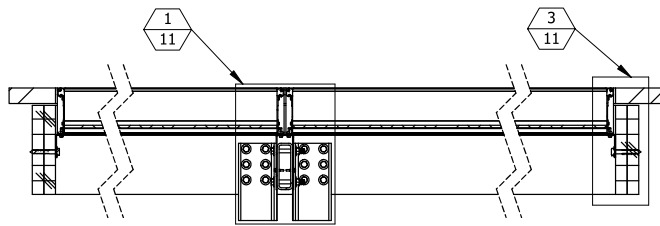
SCALE: NTS

DRAWN BY: MSM

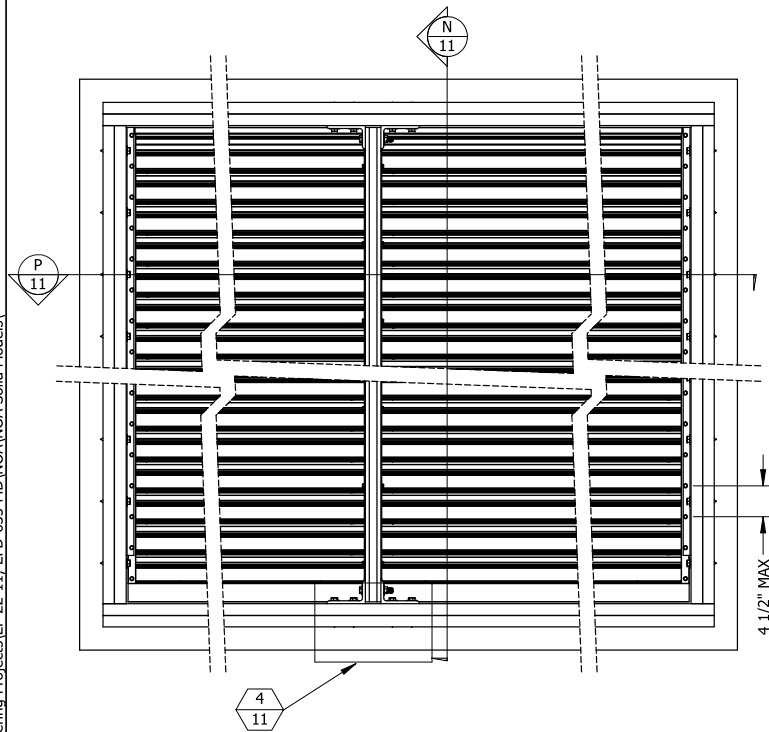
DRAWING NUMBER

EFD-635-MD NOA

I:\Engineering Library\Engineering Projects\EP 22-11; EFD-635-MD\NOA Solid Models

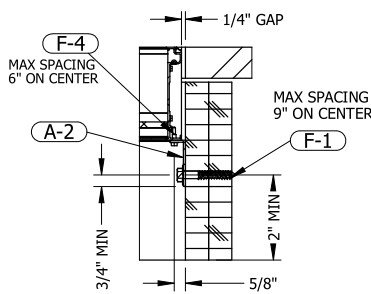


SECTION VIEW **P** WOOD
NTS **11** 11

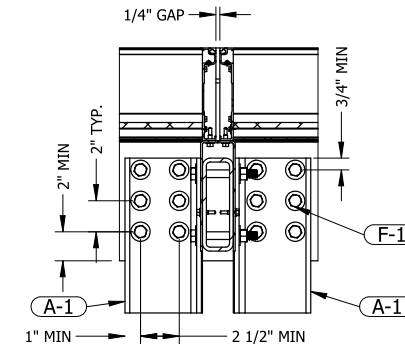


INTERIOR ELEVATION
QUANTITY SECTIONS WIDE IS UNLIMITED

PRODUCT REVISED
As complying with the Florida
Building Code
NOA-No. 23-1215.17
Expiration Date: 06/22/2028
By: *Manuel Bern*
Miami-Dade Product Control

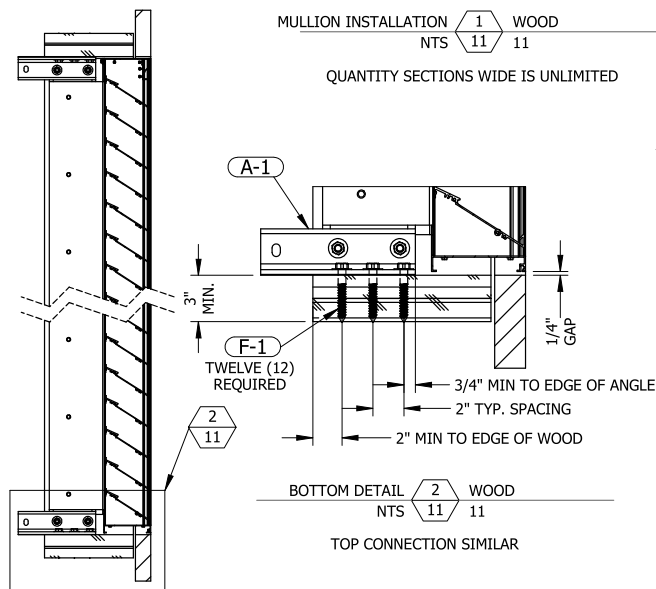


JAMB DETAIL **3** WOOD
NTS **11** 11
TYPICAL OPP. HAND



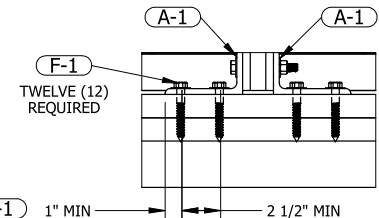
MULLION INSTALLATION **1** WOOD
NTS **11** 11

QUANTITY SECTIONS WIDE IS UNLIMITED



BOTTOM DETAIL **2** WOOD
NTS **11** 11
TOP CONNECTION SIMILAR

WOOD CONDITION



MULLION INSTALLATION **4** WOOD
NTS **11** 11

TOP CONNECTION SIMILAR

PRODUCT APPROVED
as complying with the Florida
Building Code
NOA-No. 23-0411.02
Approval Date 06/22/2023

By: *[Signature]*
Miami-Dade Product Control

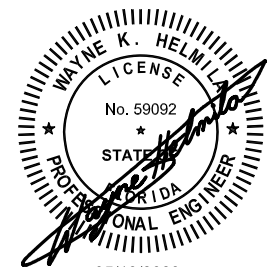
RICE

ENGINEERING

105 School Creek Trail
Luxemburg, WI 54217
Phone: (920) 617-1042
Fax: (920) 617-1100
www.rice-inc.com

Florida Firm No: F-0100005061
Certificate of Authorization: #9090
Wayne K. Helmila
Registration No: 59092

P.E. STAMP



05/18/2023
COA: 9090

UNLESS OTHERWISE SPECIFIED
DIMENSIONS ARE IN INCHES.

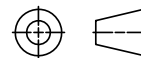
TOLERANCE UNLESS NOTED:
X.X ±0.060
X.XX ±0.030
X.XXX ±0.010
ANGLE ±1°
FRACTION ±1/16

MAX HOLE BREAKOUT:
15% OF MATERIAL THICKNESS

PCI INDUSTRIES DOING BUSINESS AS

POTTORFF

THIRD ANGLE PROJECTION



5101 Blue Mound Road
Fort Worth, Texas 76106
Phone: 817-509-2300
Fax: 817-831-3110

DRAWING DESCR: **WOOD CONDITION**

PROJECT: EFD-635-MD

PROJ. MGR.: BAF

DATE: 3/22/2023

SHEET: 11 of 16

CHK'D BY: BAF

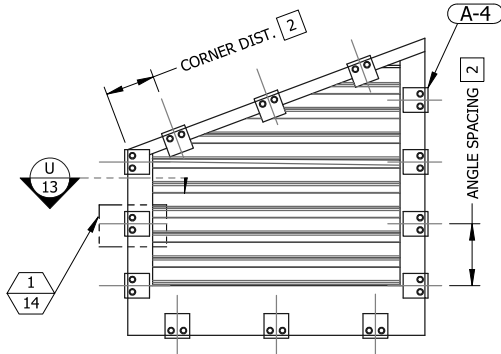
SCALE: NTS

DRAWN BY: MSM

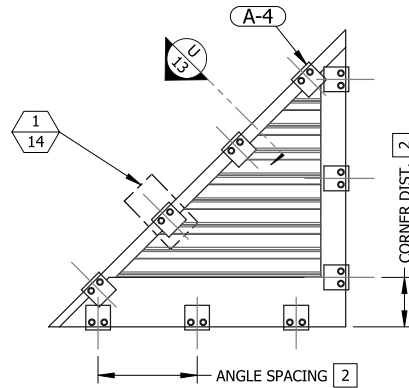
DRAWING NUMBER
EFD-635-MD NOA

1	INITIAL RELEASE	TBD	MSM
REV.	DESCRIPTION	DATE	DRAWN BY

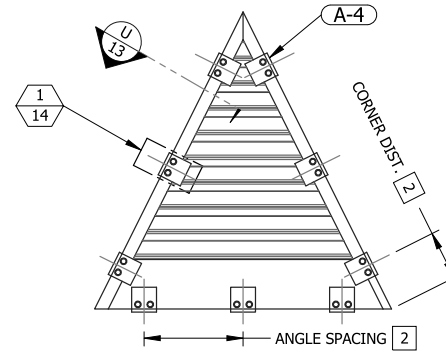
SPECIAL SHAPES INSTALLATION



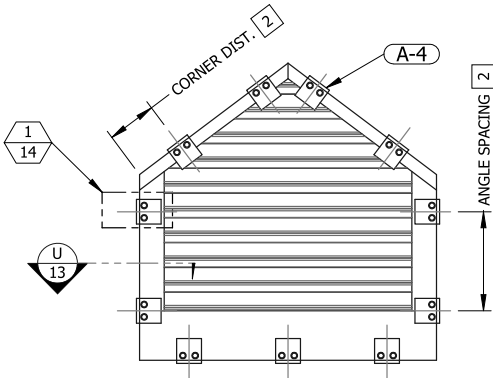
TRAPEZOID 1 REAR/INTERIOR VIEW
NTS 12 12



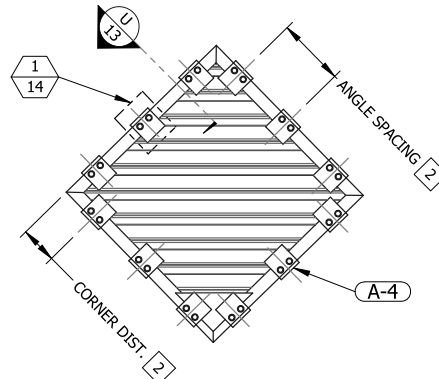
RIGHT TRIANGLE 2 REAR/INTERIOR VIEW
NTS 12 12



ISOSCELES TRIANGLE 3 REAR/INTERIOR VIEW
SCALE 12 12



DOUBLE SLOPE TOP 4 REAR/INTERIOR VIEW
NTS 12 12



Diamond 5 REAR/INTERIOR VIEW
NTS 12 12

TABLE 4 SHAPE CLIP ANGLE DIMENSIONS		
SUBSTRATE	ANGLE SPACING	CORNER DISTANCE
CONCRETE	8"	4"
GROUT-FILLED CMU	5 1/2"	2 3/4"
STEEL	10"	5"
WOOD	10"	5"

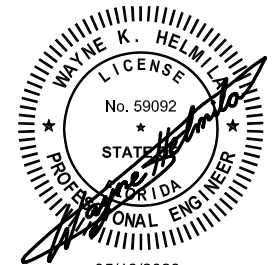
RICE

ENGINEERING
105 School Creek Trail
Luxemburg, WI 54217
Phone: (920) 617-1042
Fax: (920) 617-1100
www.rice-inc.com

Florida Firm No: F-0100005061
Certificate of Authorization: #9090
Wayne K. Helmla
Registration No: 59092

PRODUCT APPROVED
as complying with the Florida
Building Code
NOA-No. **23-0411.02**
Approval Date **06/22/2023**
By *[Signature]*
Miami-Dade Product Control

P.E. STAMP



05/18/2023
COA: 9090

- NOTES:
1. SHAPED LOUVER WIDTH AND HEIGHT WILL NOT EXCEED MAX SINGLE SECTION SIZES PER TABLE 1, SHEET 1.
 2. ALLOWABLE CLIP ANGLE SPACING AND CORNER DISTANCE VARY BY SUBSTRATE. SEE TABLE 4 FOR ALLOWABLE SPACING AND CORNER DISTANCE DIMENSIONS FOR EACH SUBSTRATE TYPE.
 3. CLIP ANGLES TO BE INSTALLED AROUND ENTIRE PERIMETER OF OPENING.

PRODUCT REVISED
As complying with the Florida
Building Code
NOA-No. **23-1215.17**
Expiration Date: **06/22/2028**
By: *[Signature]*
Miami-Dade Product Control

UNLESS OTHERWISE SPECIFIED
DIMENSIONS ARE IN INCHES.

TOLERANCE UNLESS NOTED:
X.X ±0.060
X.XX ±0.030
X.XXX ±0.010
ANGLE ±1°
FRACTION ±1/16

MAX HOLE BREAKOUT:
15% OF MATERIAL THICKNESS

PCI INDUSTRIES DOING BUSINESS AS

POTTORFF

THIRD ANGLE PROJECTION



5101 Blue Mound Road
Fort Worth, Texas 76106
Phone: 817-509-2300
Fax: 817-831-3110

DRAWING DESCR:

SPECIAL SHAPES INSTALLATION

PROJECT: EFD-635-MD

PROJ. MGR.: BAF

DRAWN BY: MSM

DATE: 3/22/2023

CHK'D BY: BAF

DRAWING NUMBER

SHEET: 12 of 16

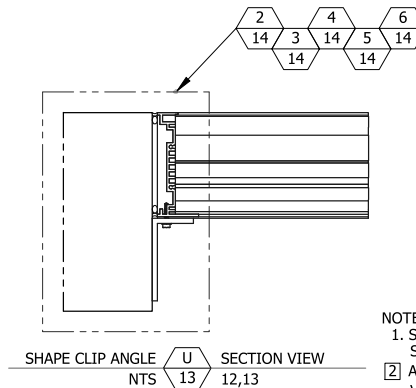
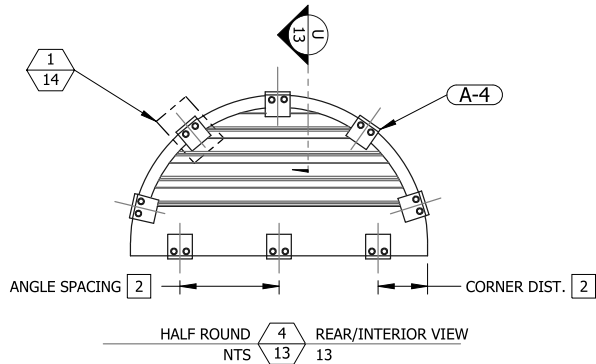
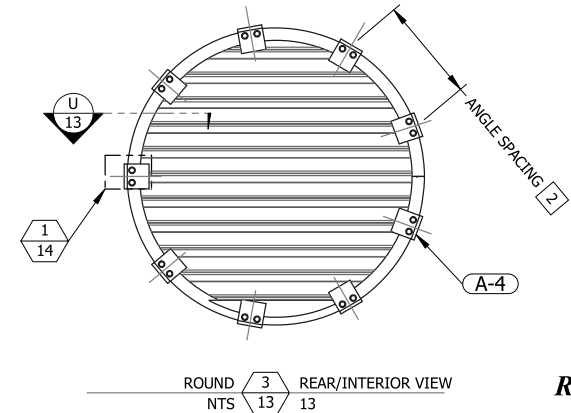
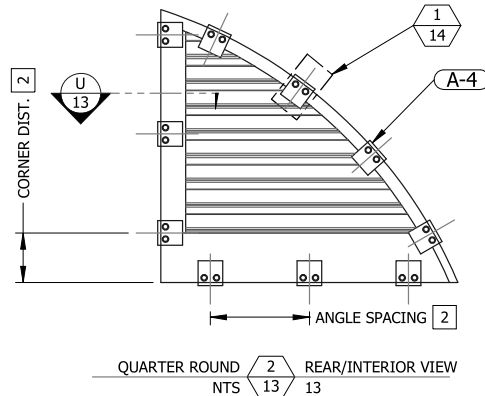
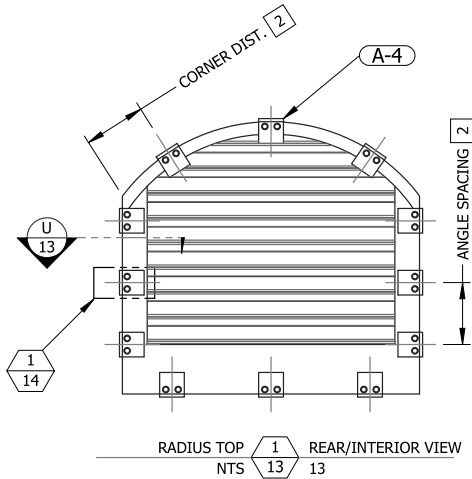
SCALE: NTS

EFD-635-MD NOA

1	INITIAL RELEASE	TBD	MSM
REV.	DESCRIPTION	DATE	DRAWN BY

I:\Engineering Library\Engineering Projects\EP 22-11; EFD-635-MD\NOA\NOA Solid Models\

SPECIAL SHAPES INSTALLATION



PRODUCT APPROVED
as complying with the Florida
Building Code
NOA-No. **23-0411.02**
Approval Date **06/22/2023**
By *[Signature]*
Miami-Dade Product Control

- NOTES:
1. SHAPED LOUVER WIDTH AND HEIGHT WILL NOT EXCEED MAX SINGLE SECTION SIZES PER TABLE 1, SHEET 1.
 2. ALLOWABLE CLIP ANGLE SPACING AND CORNER DISTANCE VARY BY SUBSTRATE. SEE TABLE 4, SHEET 12 FOR ALLOWABLE SPACING AND CORNER DISTANCE DIMENSIONS FOR EACH SUBSTRATE TYPE.
 3. CLIP ANGLES TO BE INSTALLED AROUND ENTIRE PERIMETER OF OPENING.

P.E. STAMP



05/18/2023
COA: 9090

PRODUCT REVISED
As complying with the Florida
Building Code
NOA-No. **23-1215.17**
Expiration Date: **06/22/2028**
By: *[Signature]*
Miami-Dade Product Control

UNLESS OTHERWISE SPECIFIED
DIMENSIONS ARE IN INCHES.

TOLERANCE UNLESS NOTED:
X.X ±0.060
X.XX ±0.030
X.XXX ±0.010
ANGLE ±1°
FRACTION ±1/16

MAX HOLE BREAKOUT:
15% OF MATERIAL THICKNESS

PCI INDUSTRIES DOING BUSINESS AS

POTTORFF

THIRD ANGLE PROJECTION



5101 Blue Mound Road
Fort Worth, Texas 76106
Phone: 817-509-2300
Fax: 817-831-3110

DRAWING DESCR:

SPECIAL SHAPES INSTALLATION

PROJECT: EFD-635-MD

PROJ. MGR.: BAF

DATE: 3/22/2023

SHEET: 13 of 16

CHK'D BY: BAF

SCALE: NTS

DRAWN BY: MSM

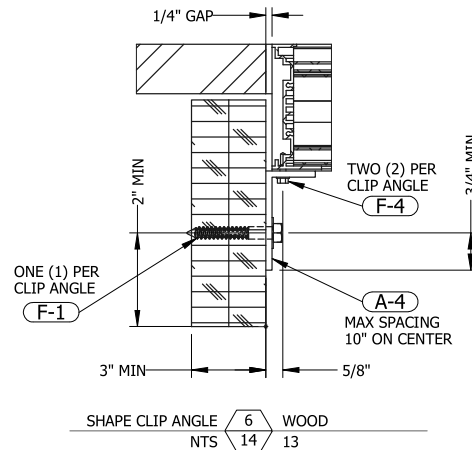
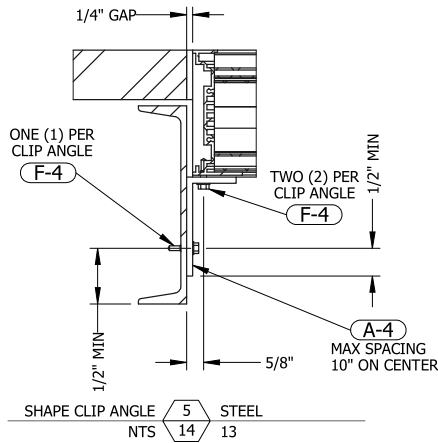
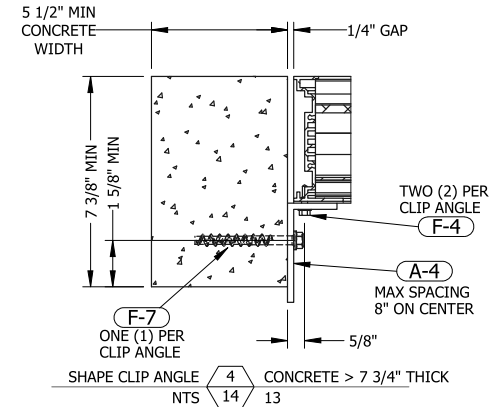
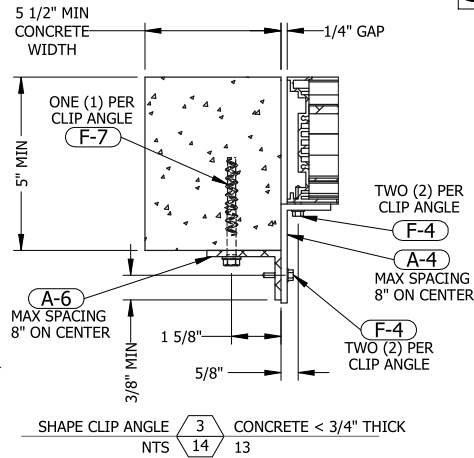
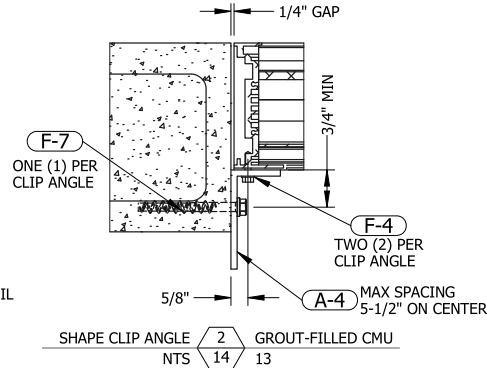
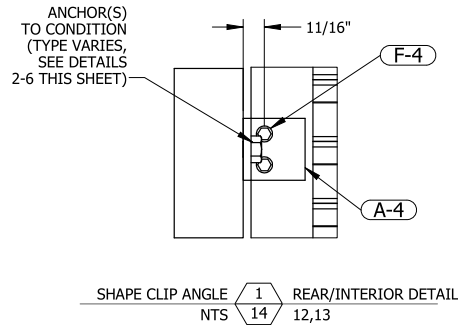
DRAWING NUMBER

EFD-635-MD NOA

1	INITIAL RELEASE	TBD	MSM
REV.	DESCRIPTION	DATE	DRAWN BY

I:\Engineering Library\Engineering Projects\EP 22-11; EFD-635-MD\NOA\NOA Solid Models\

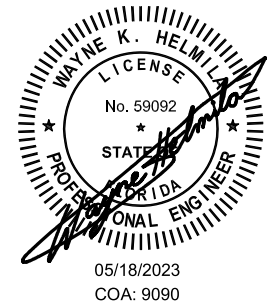
SPECIAL SHAPES INSTALLATION



PRODUCT APPROVED
as complying with the Florida
Building Code
NOA-No. **23-0411.02**
Approval Date **06/22/2023**
By *[Signature]*
Miami-Dade Product Control

RICE
ENGINEERING
105 School Creek Trail
Luxemburg, WI 54217
Phone: (920) 617-1042
Fax: (920) 617-1100
www.rice-inc.com
Florida Firm No: F-01000005061
Certificate of Authorization: #9090
Wayne K. Helmila
Registration No: 59092

P.E. STAMP



PRODUCT REVISED
As complying with the Florida
Building Code
NOA-No. **23-1215.17**
Expiration Date: **06/22/2028**
By: *[Signature]*
Miami-Dade Product Control

UNLESS OTHERWISE SPECIFIED
DIMENSIONS ARE IN INCHES.

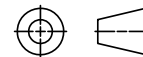
TOLERANCE UNLESS NOTED:
X.X ±0.060
X.XX ±0.030
X.XXX ±0.010
ANGLE ±1°
FRACTION ±1/16

MAX HOLE BREAKOUT:
15% OF MATERIAL THICKNESS

PCI INDUSTRIES DOING BUSINESS AS

POTTORFF

THIRD ANGLE PROJECTION



5101 Blue Mound Road
Fort Worth, Texas 76106
Phone: 817-509-2300
Fax: 817-831-3110

DRAWING DESCR: SPECIAL SHAPES INSTALLATION

PROJECT: EFD-635-MD

PROJ. MGR.: BAF

DATE: 3/22/2023

SHEET: 14 of 16

CHK'D BY: BAF

SCALE: NTS

DRAWN BY: MSM

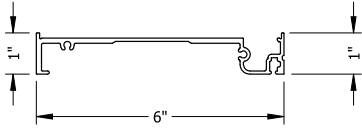
DRAWING NUMBER

EFD-635-MD NOA

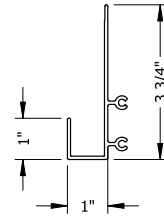
1	INITIAL RELEASE	TBD	MSM
REV.	DESCRIPTION	DATE	DRAWN BY

I:\Engineering Library\Engineering Projects\EP 22-11; EFD-635-MD\NOA\NOA Solid Models\

PART NO: E-1
PART NAME: LOUVER JAMB
MATERIAL: 0.125" THICK
6063-T6 EXTRUDED
ALUMINUM
SCALE: 4"=1'-0"

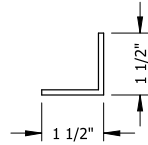


PART NO: E-5
PART NAME: LOUVER DRIP
MATERIAL: 0.081" THICK
6063-T5 EXTRUDED
ALUMINUM
SCALE: 4"=1'-0"

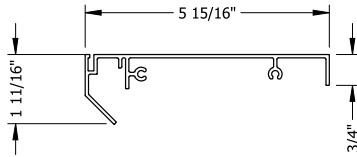


BILL OF MATERIALS

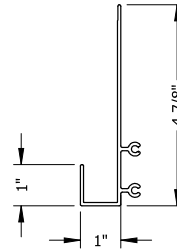
PART NO: E-8
PART NAME: LOUVER BLADE STIFFENER
MATERIAL: 0.081" THICK
6063-T6 EXTRUDED
ALUMINUM
SCALE: 4"=1'-0"



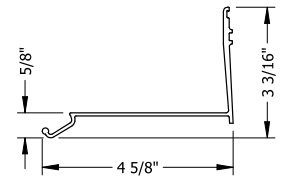
PART NO: E-2
PART NAME: LOUVER HEAD
MATERIAL: 0.081" THICK
6063-T5 EXTRUDED
ALUMINUM
SCALE: 4"=1'-0"



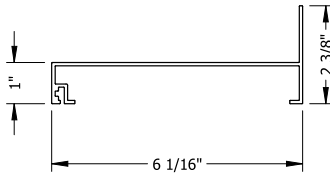
PART NO: E-6
PART NAME: LOUVER DRIP
MATERIAL: 0.081" THICK
6063-T5 EXTRUDED
ALUMINUM
SCALE: 4"=1'-0"



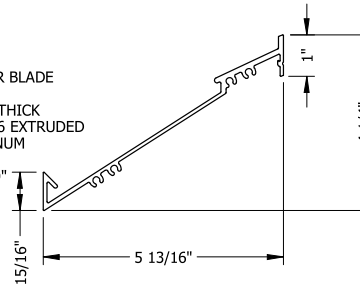
PART NO: E-9
PART NAME: LOUVER BLADE BRACE
MATERIAL: 0.081" THICK
6063-T6 EXTRUDED
ALUMINUM
SCALE: 4"=1'-0"



PART NO: E-3
PART NAME: LOUVER SILL
MATERIAL: 0.081" THICK
6063-T5 EXTRUDED
ALUMINUM
SCALE: 4"=1'-0"



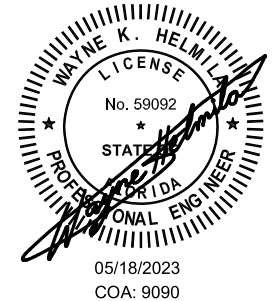
PART NO: E-7
PART NAME: LOUVER BLADE
MATERIAL: 0.081" THICK
6063-T6 EXTRUDED
ALUMINUM
SCALE: 4"=1'-0"



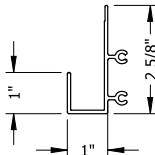
PRODUCT APPROVED
as complying with the Florida
Building Code
NOA-No. **23-0411.02**
Approval Date **06/22/2023**
By *[Signature]*
Miami-Dade Product Control

RICE
ENGINEERING
105 School Creek Trail
Luxemburg, WI 54217
Phone: (920) 617-1042
Fax: (920) 617-1100
www.rice-inc.com
Florida Firm No: F-01000005061
Certificate of Authorization: #9090
Wayne K. Helmila
Registration No: 59092

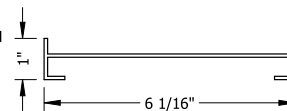
P.E. STAMP



PART NO: E-4
PART NAME: LOUVER DRIP
MATERIAL: 0.081" THICK
6063-T5 EXTRUDED
ALUMINUM
SCALE: 4"=1'-0"



PART NO: E-10
PART NAME: ROLLFRAME EXTRUSION
MATERIAL: 0.081" THICK
6063-T5 EXTRUDED
ALUMINUM
SCALE: 4"=1'-0"



PRODUCT REVISED
As complying with the Florida
Building Code
NOA-No. **23-1215.17**
Expiration Date: **06/22/2028**
By: *[Signature]*
Miami-Dade Product Control

UNLESS OTHERWISE SPECIFIED
DIMENSIONS ARE IN INCHES.

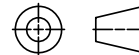
TOLERANCE UNLESS NOTED:
X.X ±0.060
X.XX ±0.030
X.XXX ±0.010
ANGLE ±1°
FRACTION ±1/16

MAX HOLE BREAKOUT:
15% OF MATERIAL THICKNESS

PCI INDUSTRIES DOING BUSINESS AS

POTTORFF

THIRD ANGLE PROJECTION



5101 Blue Mound Road
Fort Worth, Texas 76106
Phone: 817-509-2300
Fax: 817-831-3110

DRAWING DESCR: **BILL OF MATERIALS**

PROJECT: EFD-635-MD

PROJ. MGR.: BAF

DATE: 3/22/2023

SHEET: 15 of 16

CHK'D BY: BAF

SCALE: NTS

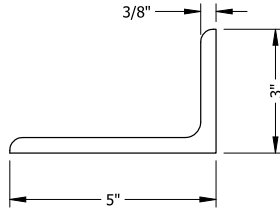
DRAWN BY: MSM

DRAWING NUMBER
EFD-635-MD NOA

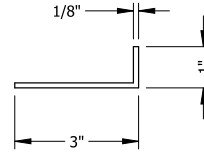
1	INITIAL RELEASE	TBD	MSM
REV.	DESCRIPTION	DATE	DRAWN BY

I:\Engineering Library\Engineering Projects\EP 22-111; EFD-635-MD\NOA\NOA Solid Models\

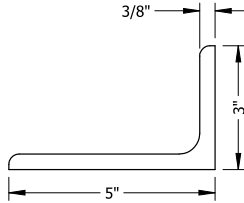
PART NO: A-1
PART NAME: CLIP ANGLE, MULLION
MATERIAL: 5" X 3" X 3/8" X 10" LONG
6061-T6 EXTRUDED ALUMINUM
SCALE: 4"=1'-0"



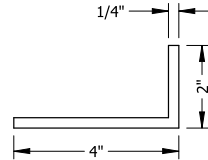
PART NO: A-2
PART NAME: CONTINUOUS ANGLE
MATERIAL: 3" X 1" X 1/8" 6063-T5
EXTRUDED ALUMINUM
SCALE: 4"=1'-0"



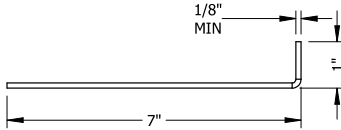
PART NO: A-3
PART NAME: SHELF ANGLE, MULLION
MATERIAL: 5" X 3" X 3/8" X 24" LONG
6061-T6 EXTRUDED ALUMINUM
SCALE: 4"=1'-0"



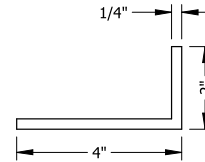
PART NO: A-4
PART NAME: CLIP ANGLE, SHAPES
MATERIAL: 4" X 2" X 1/4" X 2" LONG
6063-T5 EXTRUDED ALUMINUM
SCALE: 4"=1'-0"



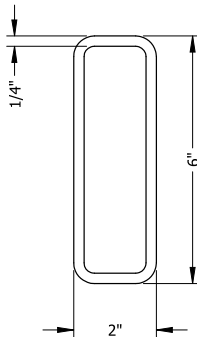
PART NO: A-5
PART NAME: MULLION ATTACHMENT ANGLE
MATERIAL: MIN. 1/8" THICK
E5052-H32 SHEET ALUMINUM
SCALE: 4"=1'-0"



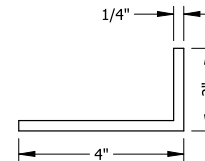
PART NO: A-6
PART NAME: CLIP ANGLE, SHAPES
MATERIAL: 4" X 2" X 1/4" X 4.5" LONG
6063-T5 EXTRUDED ALUMINUM
SCALE: 4"=1'-0"



PART NO: S-1
PART NAME: TUBE, MULLION SUPPORT
MATERIAL: 6" X 2" X 1/4" HSS
SCALE: 4"=1'-0"



PART NO: A-7
PART NAME: CONTINUOUS ANGLE
MATERIAL: 4" X 2" X 1/4"
6063-T5 EXTRUDED ALUMINUM
SCALE: 4"=1'-0"



BILL OF MATERIALS

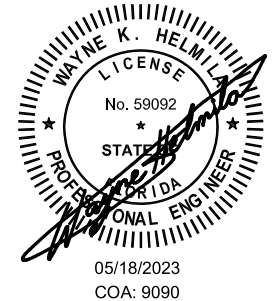
MISCELLANEOUS FASTENERS	
PART NO.	DESCRIPTION
F-1	1/2" X 3-1/2" LONG HEX LAG BOLT AND FLAT WASHER, 300-SERIES SST
F-2	#10-16 X 2" LONG, HWH, 410 SST, TEK SELF-DRILLING SCREW
F-3	1/4-14 X 1" LONG, HWH, 410 SST, TEK SELF-DRILLING SCREW
F-4	1/4-14 X 1" LONG, CORROSION RESISTANT, TEK SELF-DRILLING SCREW
F-5	1/2-13 X 4" LONG, 18-8 SST, HEX BOLT, NUT, AND TWO (2) FLAT WASHERS
F-6	1/2-13 X 2" LONG, 18-8 SST, HEX BOLT, NUT, AND TWO (2) FLAT WASHERS
F-7	3/8" X 4" DEWALT SCREW-BOLT+, GLAV FINISH
F-8	5/8" X 4" DEWALT SCREW-BOLT+, GLAV FINISH
F-9	5/8" X 6" DEWALT SCREW-BOLT+, GLAV FINISH

PRODUCT APPROVED
as complying with the Florida
Building Code
NOA-No. **23-0411.02**
Approval Date **06/22/2023**


By 
Miami-Dade Product Control

P.E. STAMP

RICE
ENGINEERING
105 School Creek Trail
Luxemburg, WI 54217
Phone: (820) 617-1042
Fax: (820) 617-1100
www.rice-inc.com
Florida Firm No: F-01000005061
Certificate of Authorization: #9090
Wayne K. Helmila
Registration No: 59092



05/18/2023
COA: 9090

PRODUCT REVISED
As complying with the Florida
Building Code
NOA-No. **23-1215.17**
Expiration Date: **06/22/2028**
By: 
Miami-Dade Product Control

UNLESS OTHERWISE SPECIFIED
DIMENSIONS ARE IN INCHES.

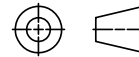
TOLERANCE UNLESS NOTED:
X.X ±0.060
X.XX ±0.030
X.XXX ±0.010
ANGLE ±1°
FRACTION ±1/16

MAX HOLE BREAKOUT:
15% OF MATERIAL THICKNESS

PCI INDUSTRIES DOING BUSINESS AS

POTTORFF

THIRD ANGLE PROJECTION



5101 Blue Mound Road
Fort Worth, Texas 76106
Phone: 817-509-2300
Fax: 817-831-3110

DRAWING DESCR: **BILL OF MATERIALS**

PROJECT: EFD-635-MD

PROJ. MGR.: BAF

DATE: 3/22/2023

SHEET: 16 of 16

CHK'D BY: BAF

SCALE: NTS

DRAWN BY: MSM

DRAWING NUMBER

EFD-635-MD NOA

1	INITIAL RELEASE	TBD	MSM
REV.	DESCRIPTION	DATE	DRAWN BY