



DEPARTMENT OF REGULATORY AND ECONOMIC RESOURCES (RER)
BOARD AND CODE ADMINISTRATION DIVISION

NOTICE OF ACCEPTANCE (NOA)

MIAMI-DADE COUNTY
PRODUCT CONTROL SECTION

11805 SW 26 Street, Room 208
Miami, Florida 33175-2474
T (786) 315-2590 F (786) 315-2599

www.miamidade.gov/building

PCI Industries, LLC dba Pottorff
5101 Blue Mound Road
Fort Worth, TX 76106

SCOPE: This NOA is being issued under the applicable rules and regulations governing the use of construction materials. The documentation submitted has been reviewed and accepted by Miami-Dade County RER-Product Control Section to be used in Miami Dade County and other areas where allowed by the Authority Having Jurisdiction (AHJ).

This NOA shall not be valid after the expiration date stated below. The Miami-Dade County Product Control Section (In Miami Dade County) and/or the AHJ (in areas other than Miami Dade County) reserve the right to have this product or material tested for quality assurance purposes. If this product or material fails to perform in the accepted manner, the manufacturer will incur the expense of such testing and the AHJ may immediately revoke, modify, or suspend the use of such product or material within their jurisdiction. RER reserves the right to revoke this acceptance if it is determined by Miami-Dade County Product Control Section that this product or material fails to meet the requirements of the applicable building code.

This product is approved as described herein and has been designed to comply with the Florida Building Code, including the High Velocity Hurricane Zone.

DESCRIPTION: Model ECD- 545-MD Aluminum Louver w/ or w/o CD-51 Damper

APPROVAL DOCUMENT: Drawing No. **ECD-545-MD NOA**, titled "ECD-545-MD", sheets 1 through 19 of 19, dated 06/27/18, with revision 4 dated 12/03/21, prepared by the manufacturer, signed and sealed by Wayne K. Helmila, P.E., bearing the Miami-Dade County Product Control Revision stamp with the Notice of Acceptance number and expiration date by the Miami-Dade County Product Control Section.

MISSILE IMPACT RATING: Large and Small Missile Impact Resistant

LABELING: A permanent label with the manufacturer's name or logo, manufacturing plant's city, state, model/ series, and the statement reading: "Miami-Dade County Product Control Approved", is to be located on each unit.

RENEWAL of this NOA shall be considered after a renewal application has been filed and there has been no change in the applicable building code negatively affecting the performance of this product.

TERMINATION of this NOA will occur after the expiration date or if there has been a revision or change in the materials, use, and/or manufacture of the product or process. Misuse of this NOA as an endorsement of any product, for sales, advertising or any other purposes shall automatically terminate this NOA. Failure to comply with any section of this NOA shall be cause for termination and removal of NOA.


ADVERTISEMENT: The NOA number preceded by the words Miami-Dade County, Florida, and followed by the expiration date may be displayed in advertising literature. If any portion of the NOA is displayed, then it shall be done in its entirety.

INSPECTION: A copy of this entire NOA shall be provided to the user by the manufacturer or its distributors and shall be available for inspection at the job site at the request of the Building Official.

This NOA **revises NOA No. 23-0620.02** and consists of this page 1 and evidence pages E-1, E-2, E-3 and E-4, as well as approval document mentioned above.

The submitted documentation was reviewed by **Manuel Perez, P.E.**




2/15/24

NOA No. 23-1215.18
Expiration Date: October 23, 2028
Approval Date: February 22, 2024
Page 1

NOTICE OF ACCEPTANCE: EVIDENCE SUBMITTED


1. EVIDENCE SUBMITTED UNDER PREVIOUS NOA's

A. DRAWINGS

1. Manufacturer's die drawings and sections.
(Submitted under NOA No. 17-0227.07)
2. Drawing No. **ECD-545-MD NOA**, titled "ECD-545-MD", sheets 1 through 19 of 19, dated 06/27/18, with revision 4 dated 12/03/21, prepared by the manufacturer, signed and sealed by Wayne K. Helmila, P.E.
(Submitted under NOA No. 23-0620.02)

B. TESTS

1. Test reports on: 1) Uniform Static Air Pressure Test, Loading per FBC, TAS 202-94
2) Large Missile Impact Test per FBC, TAS 201-94 (Level E, 80 fps)
3) Cyclic Wind Pressure Loading per FBC, TAS 203-94
along with installation diagram of a Model ECD-545-MD Aluminum Louvers, prepared by Intertek, Test Report No. **M7724.01-801-18 R1**, dated 10/26/21 and revised on 11/18/21, signed and sealed by Tyler Westerling, P.E.
(Submitted under NOA No. 23-0620.02)
2. Test reports on: 1) Uniform Static Air Pressure Test, Loading per FBC, TAS 202-94
2) Large Missile Impact Test per FBC, TAS 201-94 (Level E, 80 fps)
3) Cyclic Wind Pressure Loading per FBC, TAS 203-94
along with installation diagram of a Model ECD-545-MD Aluminum Louvers, prepared by UL LLC, Test Report No. **SV30902-20180808**, dated 09/13/18, signed and sealed by Alexis Spyrou, P.E.
(Submitted under NOA No. 18-1120.06)
3. Test report on Wind Driven Rain Resistance per FBC TAS 100(A)-95 on an ECD-545-MD Louver with a CD-51 Damper, prepared by Intertek, Test Report No. **I8042.01-801-44 R0**, dated 09/05/18, signed and sealed by Tyler Westerling, P.E.
(Submitted under NOA No. 18-1120.06)
4. Test report on Wind Driven Rain Resistance per FBC AMCA 550-15 on an ECD-545-MD Louver with a CD-51 Damper, prepared by Intertek, Test Report No. **I8042.02-801-44 R0**, dated 09/07/20, signed and sealed by Tyler Westerling, P.E.
(Submitted under NOA No. 18-1120.06)
5. Test reports on: 1) Uniform Static Air Pressure Test, Loading per FBC, TAS 202-94
2) Large Missile Impact Test per FBC, TAS 201-94 (Level E, 80 fps)
3) Cyclic Wind Pressure Loading per FBC, TAS 203-94
along with installation diagram of a Model ECD-545-MD Aluminum Louvers, prepared by Architectural Testing, Inc, Test Report No. **C8133.01-801-18**, dated 04/10/14, with revision 2 dated 01/27/15, signed and sealed by Shawn G. Collins, P.E.
(Submitted under NOA No. 14-0714.03)


Manuel Perez, P.E.
Product Control Examiner
NOA No. 23-1215.18
Expiration Date: October 23, 2028
Approval Date: February 22, 2024

NOTICE OF ACCEPTANCE: EVIDENCE SUBMITTED


1. EVIDENCE SUBMITTED UNDER PREVIOUS NOA's (CONTINUED)

B. TESTS (CONTINUED)

6. Test reports on: 1) Uniform Static Air Pressure Test, Loading per FBC, TAS 202-94
2) Large Missile Impact Test per FBC, TAS 201-94
3) Cyclic Wind Pressure Loading per FBC, TAS 203-94
along with installation diagram of a Model ECD-545-MD Aluminum Louvers,
prepared by Architectural Testing, Inc, Test Report No. **C8133.01-801-18**, dated
04/10/14, signed and sealed by Vinu J. Abraham, P.E.
(Submitted under NOA No. 14-0714.03)
7. Test Report on High Velocity Wind Driven Rain Resistance per AMCA 550-09 of a
Model ECD-545-MD Aluminum Louver, prepared by Architectural Testing, Inc., Test
Report No. **C3811.01-801-18**, dated 12/18/12, signed and sealed by Vinu J. Abraham,
P.E.
(Submitted under NOA No. 14-0714.03)
8. Test reports on: 1) Uniform Static Air Pressure Test, Loading per FBC, TAS 202-94
2) Large Missile Impact Test per FBC, TAS 201-94
3) Cyclic Wind Pressure Loading per FBC, TAS 203-94
along with installation diagram of a Model ECD-545-MD Aluminum Louver,
prepared by Architectural Testing, Inc, Test Report No. **A1620.01-801-18**, dated
10/18/10, dated 01/27/15, signed and sealed by Joseph A. Reed, P.E.
(Submitted under NOA No. 11-0429.04)
9. Test Report on High Velocity Wind Driven Rain Resistance per FBC TAS 100(A)-95
(modified by Checklist # 0240) along with marked-up drawings and installation
diagram of Model ECD-545-MD Fixed Aluminum Louver with a CD-55 Damper,
prepared by Architectural Testing, Inc, Test Report No. **92027.01-109-18**, dated
09/09/09, with Revision 1 dated 01/11/10, signed and sealed by Michael D. Stremmel,
P.E.
(Submitted under NOA No. 09-1015.08)
10. Test reports on: 1) Uniform Static Air Pressure Test, Loading per FBC, TAS 202-94
2) Large Missile Impact Test per FBC, TAS 201-94
3) Cyclic Wind Pressure Loading per FBC, TAS 203-94
along with installation diagram of a Model ECD-545-MD Aluminum Louvers,
prepared by Hurricane Test Laboratory, LLC, Test Report No. **HTL-0399-0116-07**,
dated 02/27/08, signed and sealed by Vinu J. Abraham, P.E.
(Submitted under NOA No. 08-0528.04)

C. CALCULATIONS

1. ECD-545-MD louver anchor calculations dated 01/19/22, prepared by Rice
Engineering, signed and sealed by Wayne K. Helmila, P.E.
(Submitted under NOA No. 23-0620.02)


Manuel Perez, P.E.
Product Control Examiner
NOA No. 23-1215.18
Expiration Date: October 23, 2028
Approval Date: February 22, 2024

NOTICE OF ACCEPTANCE: EVIDENCE SUBMITTED

1. EVIDENCE SUBMITTED UNDER PREVIOUS NOA's (CONTINUED)

D. QUALITY ASSURANCE

1. Miami-Dade Department of Regulatory and Economic Resources (RER)

E. MATERIAL CERTIFICATIONS

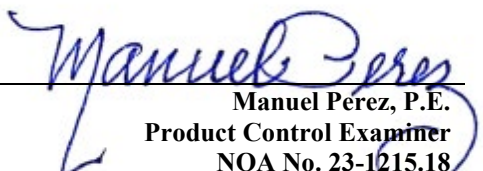
1. None.

F. STATEMENTS

1. Statement letter of conformance, complying with **FBC 7th Edition (2020)**, dated 06/14/23, issued by Rice Engineering, signed and sealed by Wayne K. Helmila, P.E.
(Submitted under NOA No. 23-0620.02)
2. Asset Purchase Agreement entered between **PCI Industries, Inc.** a California corporation (the Seller) and **PCI Industries, LLC**, a Delaware limited liability company (the Buyer), dated 10/22/21.
(Submitted under NOA No. 21-1122.06)
3. Statement letter as an official notification from **PCI Industries, Inc.** that all assets associated with the Pottorff model EFD-637-MD aluminum louver have been legally sold to **PCI Industries, LLC**, dated 11/17/21 and signed by Nathan Woodworth, Louver Development Manager.
(Submitted under NOA No. 21-1122.06)
4. Statement letter as a request from **PCI Industries, LLC** to issue a new Notice of Acceptance (NOA) for the Pottorff model EFD-637-MD aluminum louver, dated 11/17/21 and signed by Nathan Woodworth, Louver Development Manager.
(Submitted under NOA No. 21-1122.06)
5. Statement letter of no financial interest, dated 01/04/21, issued by Rice Engineering, signed and sealed by Wayne K. Helmila, P.E.
(Submitted under NOA No. 21-0427.03)

G. OTHERS

1. Notice of Acceptance No. **22-0131.03**, issued to PCI Industries, LLC d/b/a Pottorff for their Model ECD - 545-MD Aluminum Louver w/ or w/o CD-51 Damper, approved on 03/03/22 and expiring on 10/23/23.


Manuel Perez, P.E.
Product Control Examiner
NOA No. 23-1215.18
Expiration Date: October 23, 2028
Approval Date: February 22, 2024

NOTICE OF ACCEPTANCE: EVIDENCE SUBMITTED

2. NEW EVIDENCE SUBMITTED

A. DRAWINGS

1. None.

B. TESTS

1. None.

C. CALCULATIONS

1. None.

D. QUALITY ASSURANCE

1. Miami-Dade Department of Regulatory and Economic Resources (RER)

E. MATERIAL CERTIFICATIONS

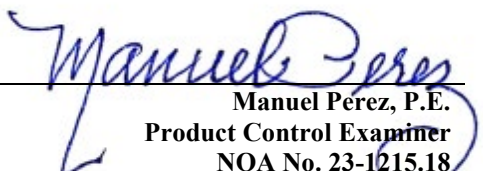
1. None.

F. STATEMENTS

1. Statement letter of conformance, complying with **FBC 8th Edition (2023)**, issued by Rice Engineering, dated 11/28/23, signed and sealed by Wayne K. Helmila, P.E.

G. OTHERS

1. Notice of Acceptance No. **23-0620.02**, issued to PCI Industries, LLC d/b/a Pottorff for their Model ECD - 545-MD Aluminum Louver w/ or w/o CD-51 Damper, approved on 07/13/23 and expiring on 10/23/28.


Manuel Perez, P.E.
Product Control Examiner
NOA No. 23-1215.18
Expiration Date: October 23, 2028
Approval Date: February 22, 2024

NOTES:
1. THIS NOA DRAWING INCLUDES INSTALLATION DETAILS TO ATTAIN MAXIMUM DESIGN PRESSURES OF ±150 PSF AS TESTED IN ACCORDANCE WITH PROTOCOLS TAS 201 (LARGE MISSILE IMPACT - LEVEL 'E', 80 FPS), TAS 202 (STATIC WIND PRESSURE), AND TAS 203 (CYCLIC WIND PRESSURE) FOR USE WITHIN HIGH VELOCITY HURRICANE-AFFECTED ZONES DEFINED BY THE FLORIDA BUILDING CODE. THE INSTALLATION OF AN OPTIONAL CD-51 DAMPER YIELDS WATER INGRESS PROTECTION AS TESTED IN ACCORDANCE WITH AMCA 550 AND TAS 100(A).

2. ALL VARIATIONS ARE LARGE MISSILE IMPACT RESISTANT.

3. UNITS OF MEASURE ARE FRACTIONAL INCHES UNLESS OTHERWISE SPECIFIED.

4. IT IS ASSUMED THAT THE LOUVER SYSTEMS DO NOT SUPPORT ANY LOADS TRANSFERRED FROM THE BUILDING CONDITION.

5. IT IS ASSUMED THAT THE BUILDING CONDITIONS ARE ADEQUATELY DESIGNED TO SUPPORT LOADS IMPARTED BY THE LOUVER SYSTEM.

6. TO PREVENT GALVANIC CORROSION, ELECTROCHEMICALLY DISSIMILAR MATERIALS IN CONTACT WITH ONE ANOTHER SHALL BE PROTECTED BY PAINT, GASKETING, OR OTHER MEANS PER THE FLORIDA BUILDING CODE.

7. WATER PENETRATION:

a. WHEN LOUVERS ARE INSTALLED WITHOUT THE OPTIONAL CD-51 DAMPER, THE ROOM BEHIND THE LOUVER MUST BE DESIGNED TO DRAIN WATER PENETRATING INTO THE ROOM, AND THE ROOM MUST HOUSE WATER-RESISTANT/WATERPROOF EQUIPMENT, COMPONENTS, OR SUPPLIES.

b. ADDITIONAL PROTECTION FROM WATER INGRESS IS NOT NECESSARY WHEN LOUVERS ARE INSTALLED WITH CD-51 DAMPERS AND THE DAMPERS ARE CLOSED.

8. OTHER BUILDING CONDITIONS THAN THOSE DENOTED MAY BE UTILIZED IF ANALYZED AND APPROVED BY A PROFESSIONAL ENGINEER.

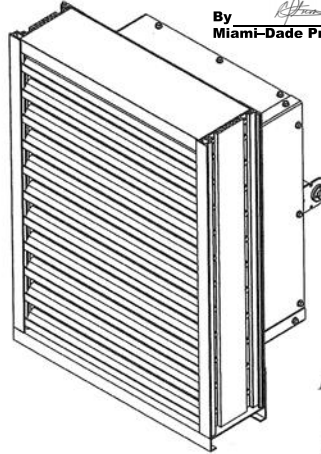
9. MULTI-SECTION WIDE AND HIGH LOUVER SYSTEMS ARE ALLOWABLE PROVIDED THE INDIVIDUAL SECTIONS ARE SUPPORTED PER THE DETAILS ON THIS DRAWING AND A SUITABLE SUPPORT STRUCTURE IS ANALYZED AND APPROVED BY A PROFESSIONAL ENGINEER.

10. UNLESS FASTENERS ARE 300 SS, SEAL FASTENERS ATTACHING TO THE SUBSTRATE WITH LIQUID PROSOLO FLASHING OR EQUAL.

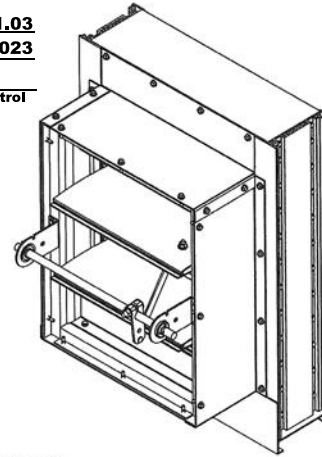
PRODUCT REVISED
as complying with the Florida
Building Code
NOA-No. **22-0131.03**

Expiration Date **10/23/2023**

By
[Signature]
Miami-Dade Product Control



EXTERIOR VIEW
W/ OPTIONAL DAMPER



RICE
ENGINEERING
105 School Creek Trail
Luxemburg, FL 34217
Phone: (820) 617-1042
Fax: (820) 617-1100
www.rice-inc.com

Florida Firm No: F-01000005051
Certificate of Authorization: #9090
Wayne K. Helmila
Registration No: 59092

INTERIOR VIEW
W/ OPTIONAL DAMPER

PRODUCT REVISED
As complying with the Florida
Building Code
NOA-No. **23-1215.18**

Expiration Date **10/23/2028**

By
[Signature]
Miami-Dade Product Control

TABLE 3
ANCHOR SCHEDULE

SUBSTRATE	LOCATION	ANCHOR TYPE	MIN. EMBEDMENT	MIN. EDGE DISTANCE	SPACING (W ≤ 60") (STANDARD)	SPACING (W > 60") (STANDARD)	SPACING (SHAPES)
CONCRETE ($f_c \geq 4000$ PSI)	JAMBS	3/8" X 4" DEWALT SCREW-BOLT+ (F-7)	3 1/4"	1 5/8"	8"	6 1/2"	8"
	MULLIONS (WALL DEPTH < 12 3/8")	5/8" X 4" DEWALT SCREW-BOLT+ (F-8)	3 1/4"	1 3/4"	7"	7"	--
	MULLIONS (WALL DEPTH ≥ 12 3/8")	5/8" X 6" DEWALT SCREW-BOLT+ (F-9)	5"	5 7/8"	9"	9"	--
GROUT FILLED CMU ($f_m \geq 1500$ PSI)	JAMBS	3/8" X 4" DEWALT SCREW-BOLT+ (F-7)	3 1/4"	1 1/2" (1 3/4" FOR SHAPES)	5"	4"	5 1/2"
	MULLIONS	3/8" X 4" DEWALT SCREW-BOLT+ (F-7)	3 1/4"	1 1/2"	4"	4"	--
STRUCTURAL STEEL (MIN. 3/16" THICK, $F_y \geq 36$ KSI)	JAMBS	1/4" X 1" SELF-DRILLING SCREW (F-11)	FULL	1/2"	8"	6 1/2"	10"
	MULLIONS	1/4" X 1" SELF-DRILLING SCREW (F-11); TWELVE (12) FASTENERS PER CONNECTION	FULL	1/2"	3/4"	3/4"	--
STEEL STUD (MIN. 12 GA, $F_y \geq 50$ KSI)	JAMBS	1/4" X 1" SELF-DRILLING SCREW (F-11); TWELVE (12) FASTENERS PER CONNECTION	FULL	1/2"	8"	6 1/2"	10"
	MULLIONS	1/4" X 1" SELF-DRILLING SCREW (F-11); TWELVE (12) FASTENERS PER CONNECTION	FULL	1/2"	3/4"	3/4"	--
WOOD (S.G. ≥ 0.43)	JAMBS	1/2" X 3 1/2" LAG BOLT WITH FLAT WASHER (F-12)	3"	2"	9"	8"	10"
	MULLIONS	1/2" X 3 1/2" LAG BOLT WITH FLAT WASHER (F-12); TWELVE (12) ANCHORS PER CONNECTION	3"	2"	2 1/2"	2 1/2"	--

TABLE 4

ANGLE FASTENER MAX SPACING (F-4)	
W ≤ 60"	W > 60"
4 1/2"	4"

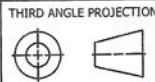
REV. NO.	DESCRIPTION	DATE	DRAWN BY
4	UPDATED LABEL DETAIL	12/03/2021	BTF
3	ADDED ANCHOR SPACING FOR NEW, ALTERNATE 72" X 120" MAX SIZE	10/14/2021	BTF
2	UPDATED ANCHORAGE DESIGN AND SHAPE DETAILS	3/19/2021	NWW
1	INITIAL RELEASE	8/30/2018	LGH

UNLESS OTHERWISE SPECIFIED
DIMENSIONS ARE IN INCHES.

TOLERANCE UNLESS NOTED:
X.X ±0.060
X.XX ±0.030
X.XXX ±0.010
ANGLE ±1°
FRACTION ±1/16

MAX HOLE BREAKOUT:
15% OF MATERIAL THICKNESS

5101 Blue Mound Road
Fort Worth, Texas 76106
Phone: 817-509-2300
Fax: 817-831-3110



PCI INDUSTRIES DOING BUSINESS AS

POTTORFF

DRAWING DESCR: COVER SHEET

PROJECT: ECD-545-MD

LOCATION:

CUSTOMER:

PROJ. MGR.:

DATE: 6/27/2018

SHEET: 1 of 19

CHK'D BY: NW

SCALE: NONE

DRAWN BY: LGH

ORDER NUMBER

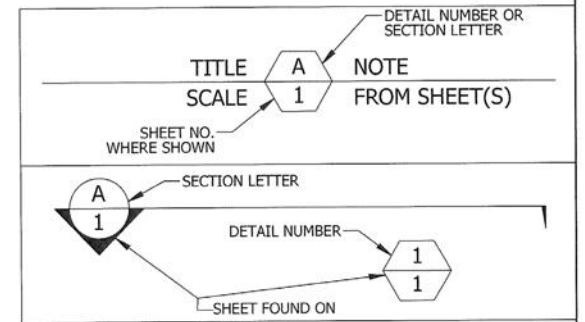
P.O. NUMBER

DRAWING NUMBER

ECD-545-MD NOA

TABLE 1 SINGLE SECTION SIZE LIMITATIONS		
MAX DESIGN PRESSURE	MIN (W X H)	MAX (W X H)
±150 PSF	6" X 6" STANDARD 10" X 14" W/ DAMPER	60" X 144" OR 72" X 120"

TABLE 2 MULTIPLE SECTION SIZE LIMITATIONS (MAX DESIGN PRESSURE: 150 PSF)	
SINGLE SECTION HIGH - UNLIMITED WIDTH	SEE SHEET #4
SINGLE SECTION WIDE - UNLIMITED HEIGHT	SEE SHEET #12



P.E. STAMP



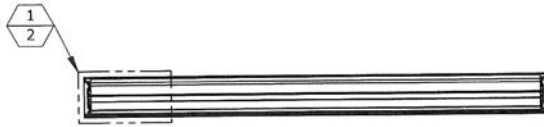
PRODUCT RENEWED
as complying with the Florida
Building Code
NOA-No. **23-0620.02**

Expiration Date **10/23/2028**

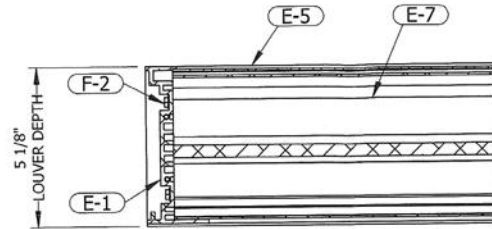
By
[Signature]
Miami-Dade Product Control

01/27/2022
COA: 9090

GENERAL LOUVER ASSEMBLY

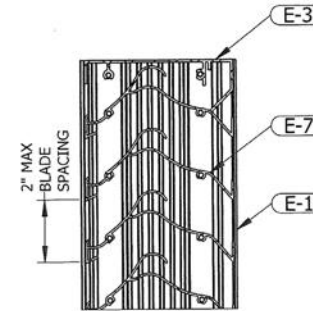


SECTION VIEW **B** GENERAL ASSEMBLY
SCALE: 3/4" = 1'-0" **2**



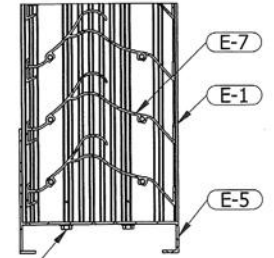
CONSTRUCTION **1** DETAIL **2**
3" = 1'-0"

IN FLANGED CONFIGURATIONS:
E-2 WILL BE USED IN PLACE OF E-1
E-6 WILL BE USED IN PLACE OF E-5



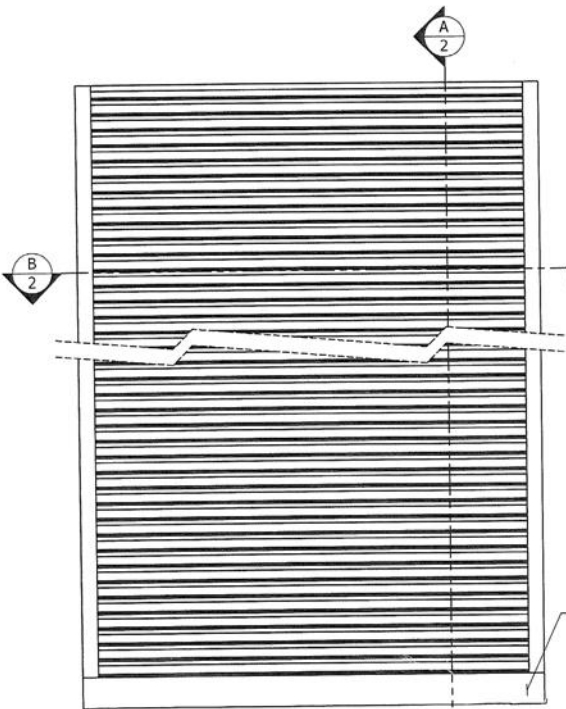
CONSTRUCTION **2** DETAIL **2**
3" = 1'-0"

IN FLANGED CONFIGURATIONS:
E-2 WILL BE USED IN PLACE OF E-1
E-4 WILL BE USED IN PLACE OF E-3



CONSTRUCTION **3** DETAIL **2**
3" = 1'-0"

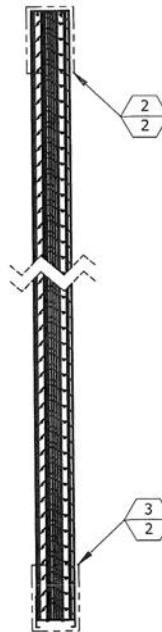
IN FLANGED CONFIGURATIONS:
E-2 WILL BE USED IN PLACE OF E-1
E-6 WILL BE USED IN PLACE OF E-5



INTERIOR ELEVATION

PRODUCT RENEWED
as complying with the Florida
Building Code
NOA-No. **23-0620.02**
Expiration Date **10/23/2028**
By *[Signature]*
Miami-Dade Product Control

ENGRAVED LABEL DETAIL
PCI Industries LLC DBA Miami Dade County
POTTORFF
Ft Worth TX
SO #123456
Product Control
Approved



SECTION VIEW **A** GENERAL ASSEMBLY
3/4" = 1'-0" **2**

PRODUCT REVISED
as complying with the Florida
Building Code
NOA-No. **22-0131.03**
Expiration Date **10/23/2023**
By *[Signature]*
Miami-Dade Product Control

PRODUCT REVISED
As complying with the Florida
Building Code
NOA-No. **23-1215.18**
Expiration Date: **10/23/2028**
By: *Manuel J. [Signature]*
Miami-Dade Product Control

RICE
ENGINEERING
105 School Creek Trail
Luxemburg, WI 54217
Phone: (920) 617-1042
Fax: (920) 617-1100
www.rice-inc.com
Florida Firm No: F-01000005061
Certificate of Authorization: #9090
Wayne K. Helmila
Registration No: 59092

P.E. STAMP



UNLESS OTHERWISE SPECIFIED
DIMENSIONS ARE IN INCHES.

TOLERANCE UNLESS NOTED:
X.X ±0.050
X.XX ±0.030
X.XXX ±0.010
ANGLE ±1°
FRACTION ±1/16

MAX HOLE BREAKOUT:
15% OF MATERIAL THICKNESS

5101 Blue Mound Road
Fort Worth, Texas 76106
Phone: 817-509-2300
Fax: 817-831-3110

THIRD ANGLE PROJECTION



PCI INDUSTRIES DOING BUSINESS AS

POTTORFF

DRAWING DESCR: GENERAL LOUVER ASSEMBLY

PROJECT: ECD-545-MD

LOCATION:

CUSTOMER:

PROJ. MGR.:

DATE: 6/27/2018

SHEET: 2 of 19

CHK'D BY: NW

SCALE: 3/4" = 1'-0"

DRAWN BY: LGH

ORDER NUMBER

P.O. NUMBER

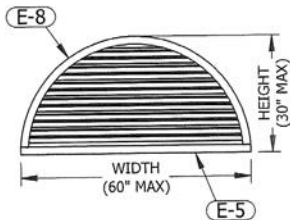
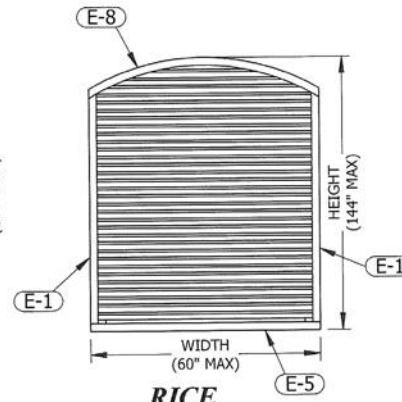
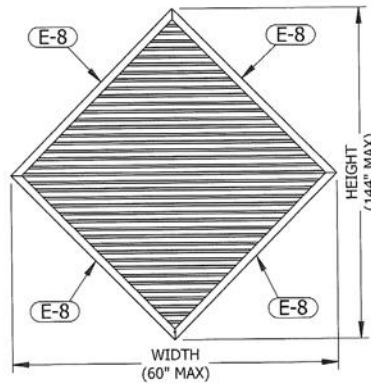
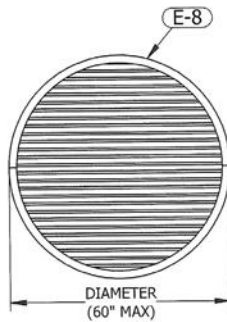
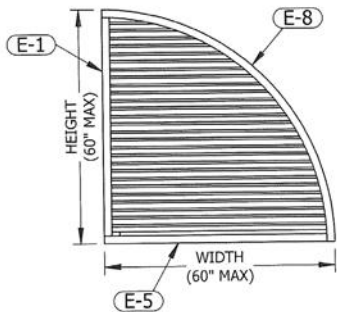
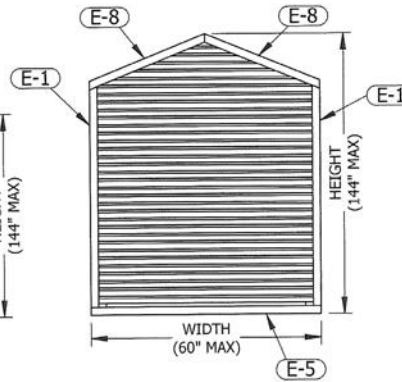
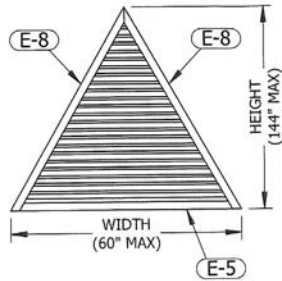
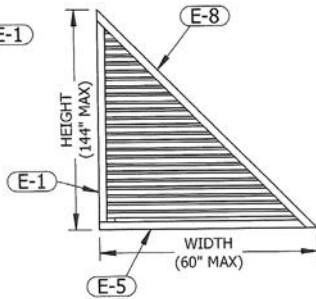
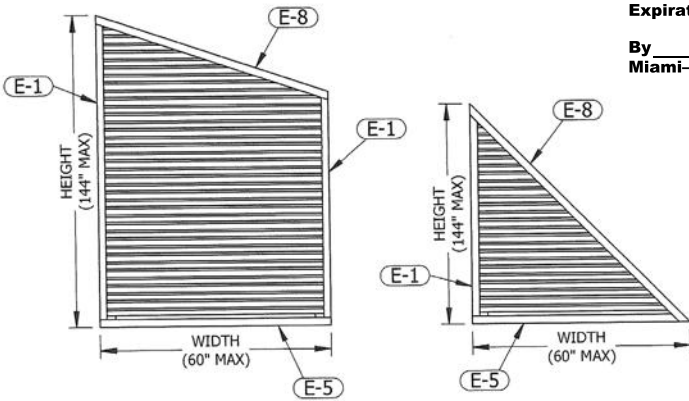
DRAWING NUMBER

ECD-545-MD NOA

PRODUCT RENEWED
as complying with the Florida
Building Code
NOA-No. **23-0620.02**

Expiration Date **10/23/2028**

By *[Signature]*
Miami-Dade Product Control

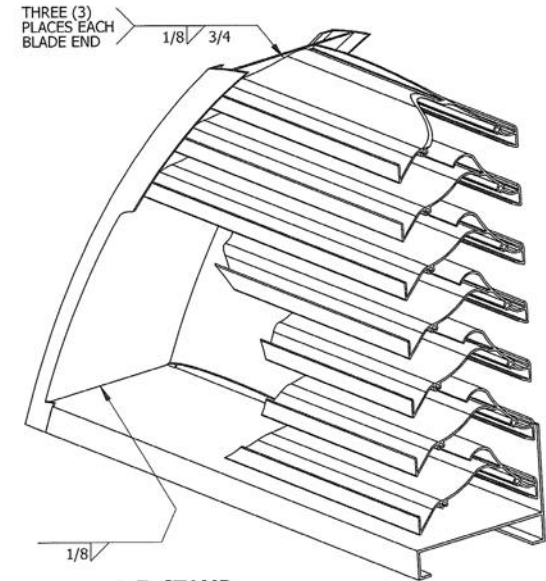


PRODUCT REVISED
as complying with the Florida
Building Code
NOA-No. **22-0131.03**
Expiration Date **10/23/2023**
By *[Signature]*
Miami-Dade Product Control

PRODUCT REVISED
As complying with the Florida
Building Code
NOA-No. **23-1215.18**
Expiration Date: **10/23/2028**
By: *[Signature]*
Miami-Dade Product Control

RICE
ENGINEERING
105 School Creek Trail
Luxemburg, WI 54217
Phone: (920) 617-1042
Fax: (920) 617-1100
www.rice-inc.com
Florida Firm No: F-01000005061
Certificate of Authorization: #9090
Wayne K. Helmila
Registration No: 59092

SHAPED LOUVER DETAILS



P.E. STAMP



- NOTES:
1. SHAPED LOUVER DIMENSIONS WILL NOT EXCEED MAX SINGLE SECTION SIZES PER TABLE 1, SHEET 1.
2. SEE SHEETS 11-13 FOR SHAPED LOUVER INSTALLATION DETAILS

UNLESS OTHERWISE SPECIFIED
DIMENSION ARE IN INCHES.

TOLERANCE UNLESS NOTED:
X.X ±0.060
X.XX ±0.030
X.XXX ±0.010
ANGLE ±1°
FRACTION ±1/16

MAX HOLE BREAKOUT:
15% OF MATERIAL THICKNESS

5101 Blue Mound Road
Fort Worth, Texas 76106
Phone: 817-509-2300
Fax: 817-831-3110

THIRD ANGLE PROJECTION



PCI INDUSTRIES DOING BUSINESS AS

POTTORFF

DRAWING DESCR: SHAPED LOUVER DETAILS

PROJECT: ECD-545-MD

LOCATION:

CUSTOMER:

PROJ. MGR.:

DATE: 6/27/2018

SHEET: 3 of 19

DRAWN BY: LGH

ORDER NUMBER

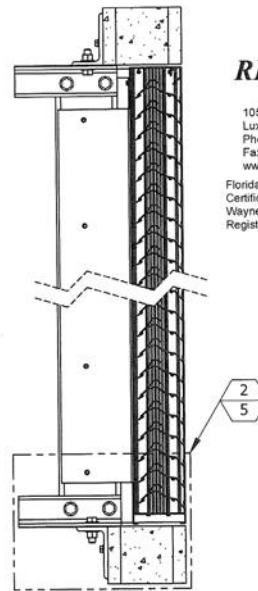
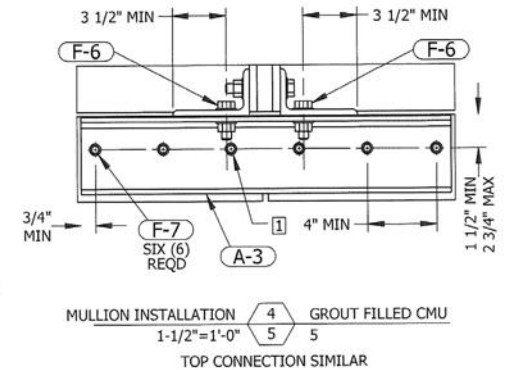
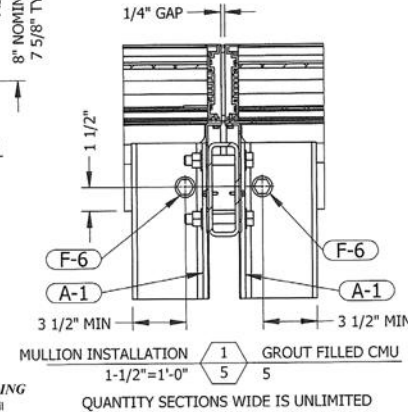
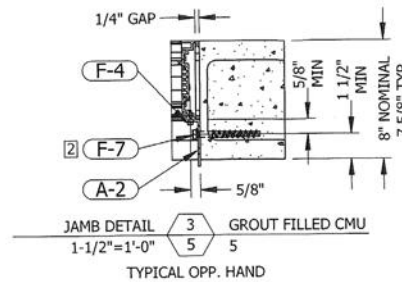
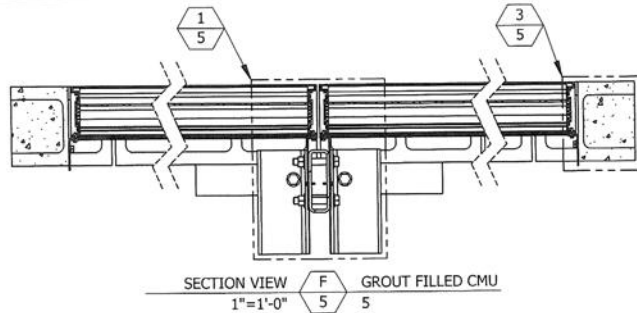
P.O. NUMBER

DRAWING NUMBER

ECD-545-MD NOA

REV. NO.	DESCRIPTION	DATE	DRAWN BY
4	UPDATED LABEL DETAIL	12/03/2021	BTF
3	ADDED ANCHOR SPACING FOR NEW, ALTERNATE 72" X 120" MAX SIZE	10/14/2021	BTF
2	UPDATED ANCHORAGE DESIGN AND SHAPE DETAILS	3/19/2021	NWW
1	INITIAL RELEASE	8/30/2018	LGH

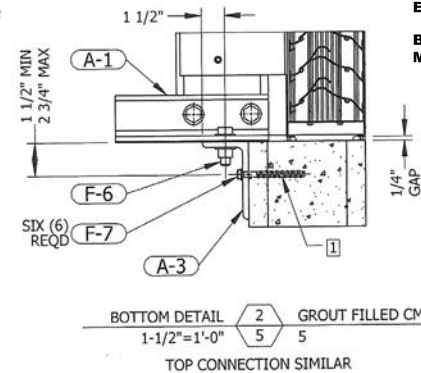
GROUT FILLED CMU CONDITION



RICE
ENGINEERING
105 School Creek Trail
Luxemburg, WI 54217
Phone: (920) 617-1042
Fax: (920) 617-1100
www.rice-inc.com
Florida Firm No: F-01000005061
Certificate of Authorization: #9090
Wayne K. Helmila
Registration No: 59092

PRODUCT RENEWED
as complying with the Florida
Building Code
NOA-No. **23-0620.02**
Expiration Date **10/23/2028**
By *[Signature]*
Miami-Dade Product Control

PRODUCT REVISED
as complying with the Florida
Building Code
NOA-No. **22-0131.03**
Expiration Date **10/23/2023**
By *[Signature]*
Miami-Dade Product Control



- NOTES:
1 NO ANCHOR MAY BE LOCATED CLOSER THAN 1-1/4" TO A VERTICAL (HEAD) JOINT BETWEEN CMU BLOCKS.
2 SEE TABLE 3 ON SHEET 1 FOR ANCHOR SPACING.
3 SEE TABLE 4 ON SHEET 1 FOR FASTENER SPACING.



01/27/2022
COA: 9090

PRODUCT REVISED
As complying with the Florida
Building Code
NOA-No. **23-1215.18**
Expiration Date: **10/23/2028**
By *[Signature]*
Miami-Dade Product Control

INTERIOR ELEVATION
QUANTITY SECTIONS WIDE IS UNLIMITED

UNLESS OTHERWISE SPECIFIED
DIMENSION ARE IN INCHES.

TOLERANCE UNLESS NOTED:
X.X ±0.060
X.XX ±0.030
X.XXX ±0.010
ANGLE ±1°
FRACTION ±1/16

MAX HOLE BREAKOUT:
15% OF MATERIAL THICKNESS

5101 Blue Mound Road
Fort Worth, Texas 76156
Phone: 817-509-2300
Fax: 817-831-3110

THIRD ANGLE PROJECTION



PCI INDUSTRIES DOING BUSINESS AS

POTTORFF

DRAWING DESCR: GROUT FILLED CMU CONDITION

PROJECT: ECD-545-MD

LOCATION:

CUSTOMER:

PROJ. MGR.:

DATE: 6/27/2018

SHEET: 5 of 19

CHK'D BY: NW

SCALE: 1"=1'-0"

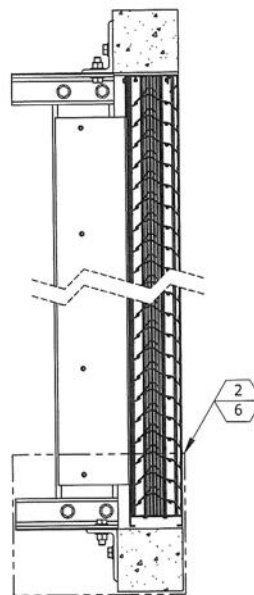
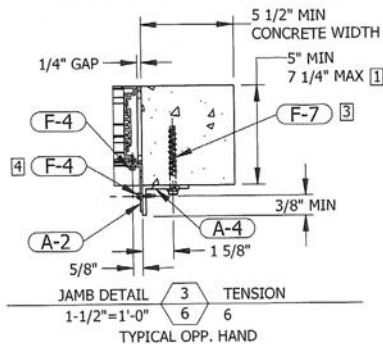
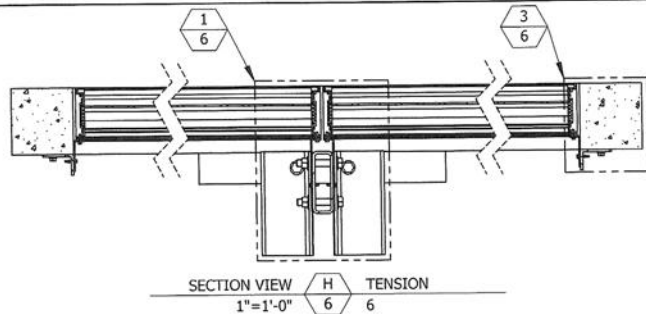
DRAWN BY: LGH

ORDER NUMBER

P.O. NUMBER

DRAWING NUMBER

ECD-545-MD NOA



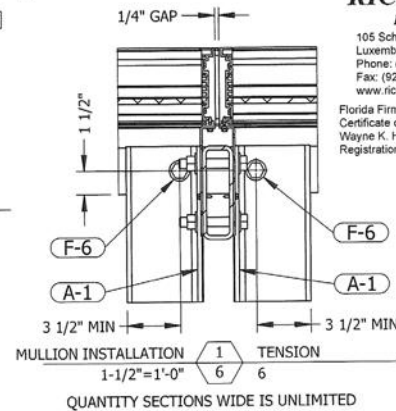
SECTION VIEW 1"=1'-0" G 6 TENSION 6

CONCRETE CONDITION TENSION CONNECTION

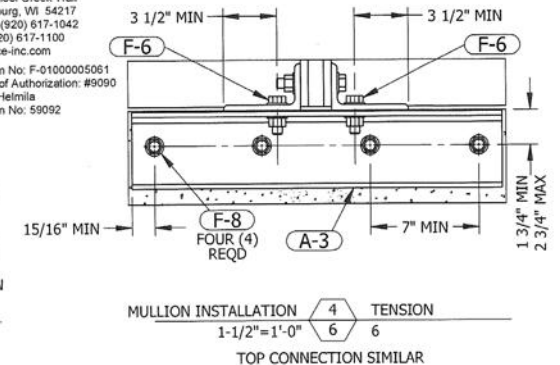
RICE

ENGINEERING

105 School Creek Trail
Luxemburg, WI 54217
Phone: (920) 617-1042
Fax: (920) 617-1100
www.rice-inc.com
Florida Firm No: F-01000005061
Certificate of Authorization: #9090
Wayne K. Helmila
Registration No: 59092



QUANTITY SECTIONS WIDE IS UNLIMITED

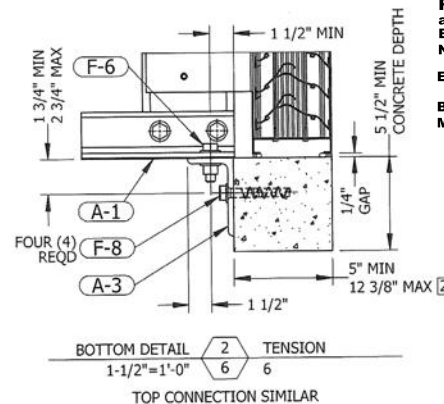


PRODUCT RENEWED
as complying with the Florida
Building Code
NOA-No. **23-0620.02**
Expiration Date **10/23/2028**

By *[Signature]*
Miami-Dade Product Control

PRODUCT REVISED
as complying with the Florida
Building Code
NOA-No. **22-0131.03**
Expiration Date **10/23/2023**

By *[Signature]*
Miami-Dade Product Control



BOTTOM DETAIL 1"=1'-0" 2 6 TENSION 6
TOP CONNECTION SIMILAR

- NOTES:
- SEE SHEET 7 FOR SHEAR CONNECTION DETAILS WHEN CONCRETE CONDITION AT JAMB > 7 1/4" THICK.
 - SEE SHEET 7 FOR SHEAR CONNECTION DETAILS WHEN CONCRETE CONDITION AT MULLION > 12 3/8" THICK.
 - SEE TABLE 3 ON SHEET 1 FOR ANCHOR SPACING.
 - SEE TABLE 4 ON SHEET 1 FOR FASTENER SPACING.



PRODUCT REVISED
As complying with the Florida
Building Code
NOA-No. **23-1215.18**
Expiration Date: **10/23/2028**
By: *[Signature]*
Miami-Dade Product Control

INTERIOR ELEVATION

QUANTITY SECTIONS WIDE IS UNLIMITED

REV. NO.	DESCRIPTION	DATE	DRAWN BY
4	UPDATED LABEL DETAIL	12/03/2021	BTF
3	ADDED ANCHOR SPACING FOR NEW, ALTERNATE 72" X 120" MAX SIZE	10/14/2021	BTF
2	UPDATED ANCHORAGE DESIGN AND SHAPE DETAILS	3/19/2021	NWW
1	INITIAL RELEASE	8/30/2018	LGH

UNLESS OTHERWISE SPECIFIED
DIMENSION ARE IN INCHES.

TOLERANCE UNLESS NOTED:
X.X ±0.060
X.XX ±0.030
X.XXX ±0.010
ANGLE ±1°
FRACTION ±1/16

MAX HOLE BREAKOUT:
15% OF MATERIAL THICKNESS

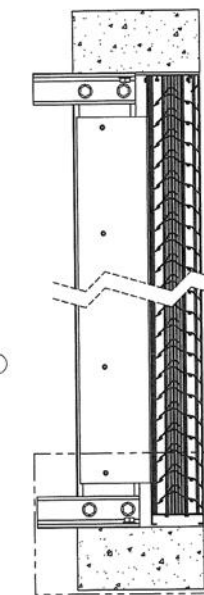
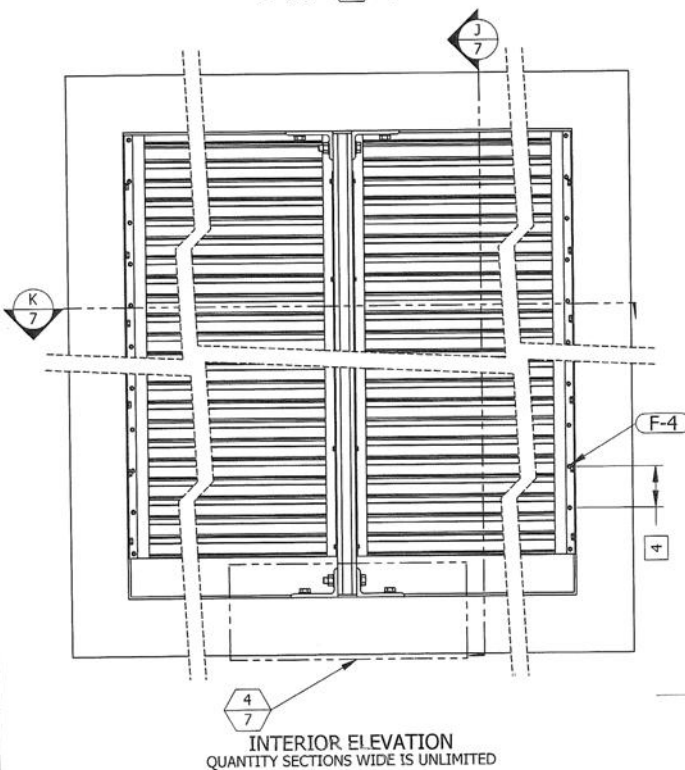
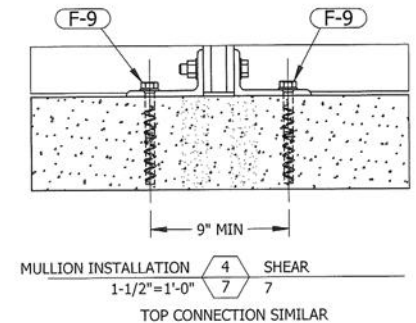
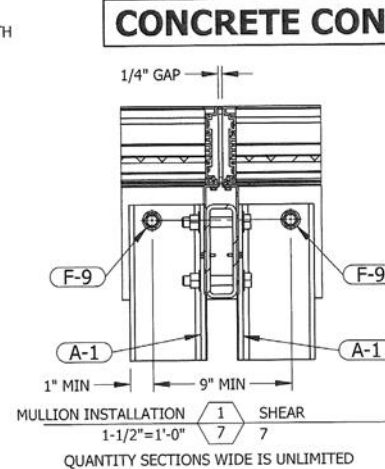
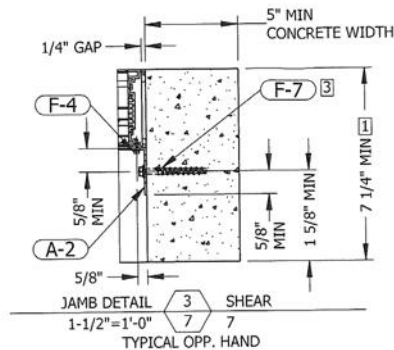
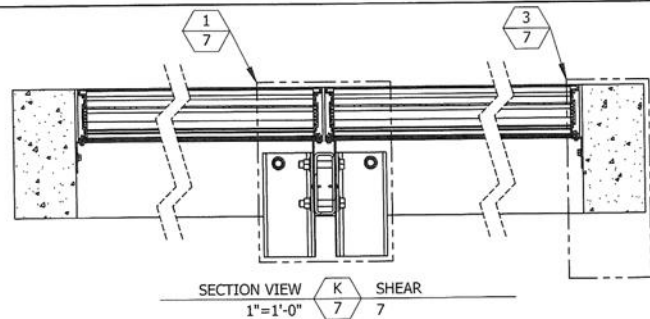
5101 Blue Mound Road
Fort Worth, Texas 76106
Phone: 817-509-2300
Fax: 817-831-3110

THIRD ANGLE PROJECTION

PCI INDUSTRIES DOING BUSINESS AS

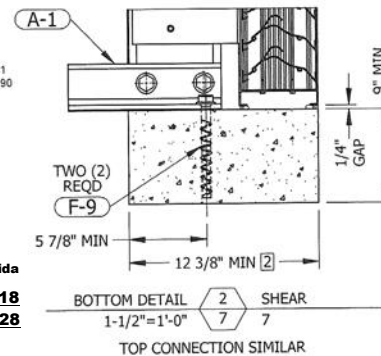
POTTORFF

DRAWING DESCR: CONCRETE CONDITION TENSION CONNECTION			
PROJECT: ECD-545-MD			
LOCATION:			
CUSTOMER:			
PROJ. MGR.:	CHK'D BY: NW	DRAWN BY: LGH	ORDER NUMBER
DATE: 6/27/2018	SCALE: 1"=1'-0"	P.O. NUMBER	DRAWING NUMBER
SHEET: 6 of 19			ECD-545-MD NOA



RICE
ENGINEERING
105 School Creek Trail
Luxemburg, WI 54217
Phone: (920) 617-1042
Fax: (920) 617-1100
www.rice-inc.com
Florida Firm No: F-01000005061
Certificate of Authorization: #9090
Wayne K. Helmli
Registration No: 59092

PRODUCT REVISED
As complying with the Florida
Building Code
NOA-No. **23-1215.18**
Expiration Date: **10/23/2028**
By: *Manuel Fern*
Miami-Dade Product Control



- NOTES:
1 SEE SHEET 6 FOR TENSION CONNECTION DETAILS WHEN CONCRETE CONDITION AT JAMB $\leq 7 \frac{1}{4}$ " THICK.
2 SEE SHEET 6 FOR TENSION CONNECTION DETAILS WHEN CONCRETE CONDITION AT MULLION $\leq 12 \frac{3}{8}$ " THICK.
3 SEE TABLE 3 ON SHEET 1 FOR ANCHOR SPACING.
4 SEE TABLE 4 ON SHEET 1 FOR FASTENER SPACING.

PRODUCT RENEWED
as complying with the Florida
Building Code
NOA-No. **23-0620.02**
Expiration Date **10/23/2028**
By: *Manuel Fern*
Miami-Dade Product Control

PRODUCT REVISED
as complying with the Florida
Building Code
NOA-No. **22-0131.03**
Expiration Date **10/23/2023**
By: *Manuel Fern*
Miami-Dade Product Control



UNLESS OTHERWISE SPECIFIED
DIMENSION ARE IN INCHES.

TOLERANCE UNLESS NOTED:
X.X ± 0.060
X.XX ± 0.030
X.XXX ± 0.010
ANGLE $\pm 1^\circ$
FRACTION $\pm 1/16$

MAX HOLE BREAKOUT:
15% OF MATERIAL THICKNESS

5101 Blue Mound Road
Fort Worth, Texas 76106
Phone: 817-509-2300
Fax: 817-831-3110

THIRD ANGLE PROJECTION



PCI INDUSTRIES DOING BUSINESS AS

POTTORFF

DRAWING DESCR: CONCRETE CONDITION SHEAR CONNECTION

PROJECT: ECD-545-MD

LOCATION:

CUSTOMER:

PROJ. MGR.:

DATE: 6/27/2018

SHEET: 7 of 19

CHK'D BY: NW

SCALE: 1"=1'-0"

DRAWN BY: LGH

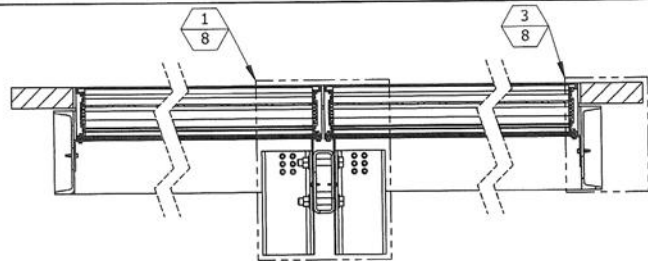
ORDER NUMBER

P.O. NUMBER

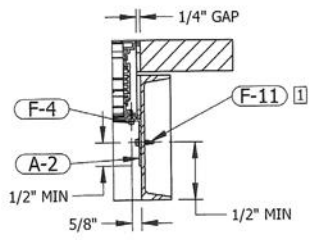
DRAWING NUMBER

ECD-545-MD NOA

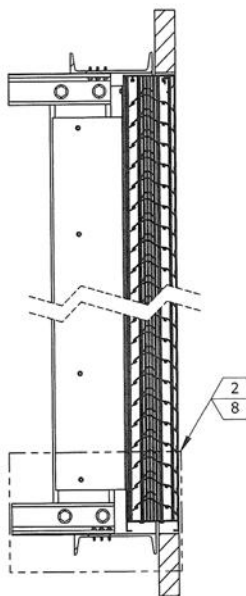
REV. NO.	DESCRIPTION	DATE	DRAWN BY
4	UPDATED LABEL DETAIL	12/03/2021	BTF
3	ADDED ANCHOR SPACING FOR NEW, ALTERNATE 72" X 120" MAX SIZE	10/14/2021	BTF
2	UPDATED ANCHORAGE DESIGN AND SHAPE DETAILS	3/19/2021	NWW
1	INITIAL RELEASE	8/30/2018	LGH



SECTION VIEW 1
1"=1'-0"



JAMB DETAIL 3
1-1/2"=1'-0"



SECTION VIEW 2
1"=1'-0"

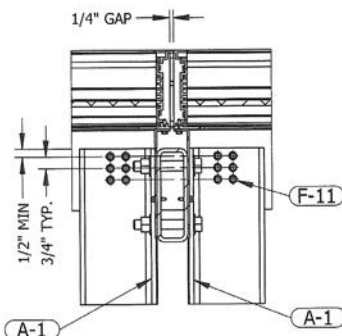
PRODUCT REVISED
As complying with the Florida
Building Code
NOA-No. **23-1215.18**
Expiration Date: **10/23/2028**
By: *Manuel Ferraz*
Miami-Dade Product Control

INTERIOR ELEVATION
QUANTITY SECTIONS WIDE IS UNLIMITED

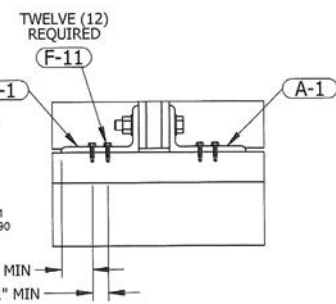
PRODUCT RENEWED
as complying with the Florida
Building Code
NOA-No. **23-0620.02**
Expiration Date **10/23/2028**
By: *Rice*
Miami-Dade Product Control

PRODUCT REVISED
as complying with the Florida
Building Code
NOA-No. **22-0131.03**
Expiration Date **10/23/2023**
By: *Rice*
Miami-Dade Product Control

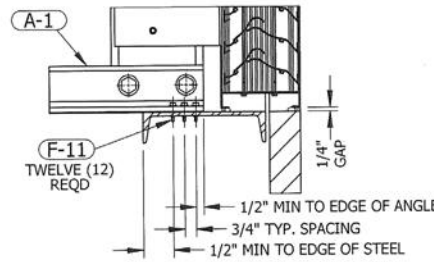
STEEL CONDITION



MULLION INSTALLATION 1
1-1/2"=1'-0"



MULLION INSTALLATION 4
1-1/2"=1'-0"



BOTTOM DETAIL 2
1-1/2"=1'-0"

- NOTES:
1 SEE TABLE 3 ON SHEET 1 FOR ANCHOR SPACING.
2 SEE TABLE 4 ON SHEET 1 FOR FASTENER SPACING.

RICE
ENGINEERING
105 School Creek Trail
Luxemburg, WI 54217
Phone: (920) 617-1042
Fax: (920) 617-1100
www.rice-inc.com
Florida Firm No: F-0100005061
Certificate of Authorization: #9090
Wayne K. Helmila
Registration No: 59092

P.E. STAMP

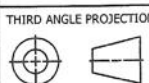


UNLESS OTHERWISE SPECIFIED
DIMENSION ARE IN INCHES.

5101 Blue Mound Road
Fort Worth, Texas 76106
Phone: 817-509-2300
Fax: 817-831-3110

TOLERANCE UNLESS NOTED:
X.X ±0.060
X.XX ±0.030
X.XXX ±0.010
ANGLE ±1°
FRACTION ±1/16

MAX HOLE BREAKOUT:
15% OF MATERIAL THICKNESS



PCI INDUSTRIES DOING BUSINESS AS

POTTORFF

DRAWING DESCR: STEEL CONDITION

PROJECT: ECD-545-MD

LOCATION:

CUSTOMER:

PROJ. MGR.:

DRAWN BY: LGH

DATE: 6/27/2018

CHK'D BY: NW

ORDER NUMBER

P.O. NUMBER

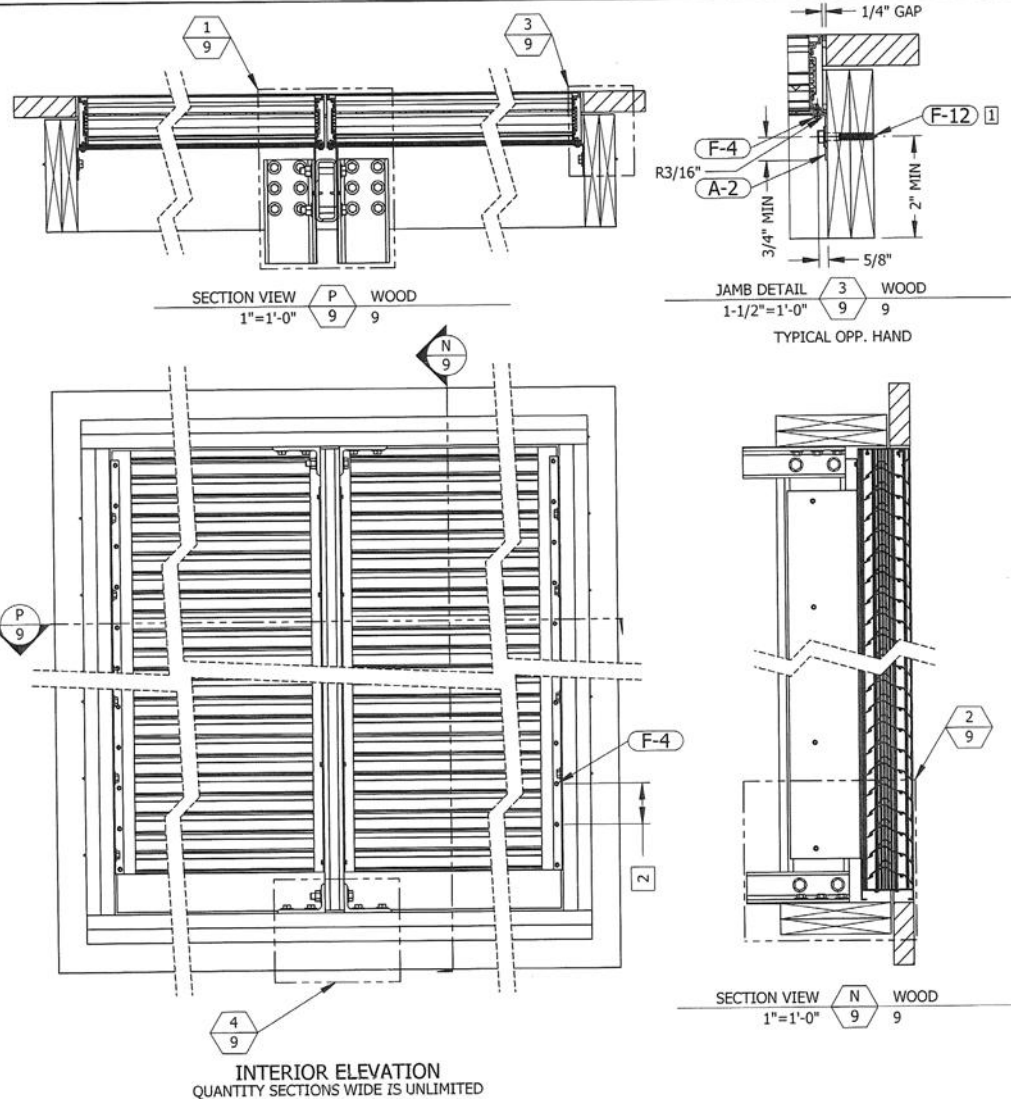
DRAWING NUMBER

SHEET: 8 of 19

SCALE: 1"=1'-0"

ECD-545-MD NOA

REV. NO.	DESCRIPTION	DATE	DRAWN BY
4	UPDATED LABEL DETAIL	12/03/2021	BTF
3	ADDED ANCHOR SPACING FOR NEW, ALTERNATE 72" X 120" MAX SIZE	10/14/2021	BTF
2	UPDATED ANCHORAGE DESIGN AND SHAPE DETAILS	3/19/2021	NWW
1	INITIAL RELEASE	8/30/2018	LGH



PRODUCT RENEWED
as complying with the Florida
Building Code
NOA-No. **23-0620.02**

Expiration Date **10/23/2028**

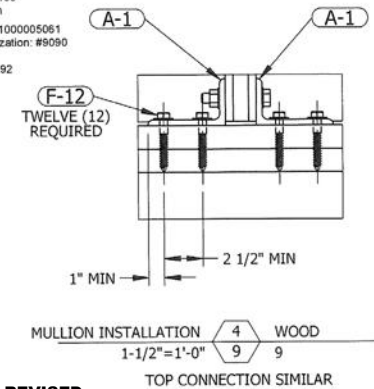
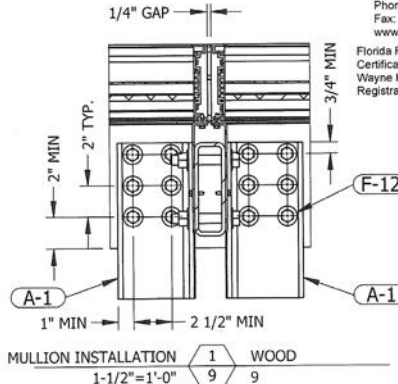
By *[Signature]*
Miami-Dade Product Control

RICE

ENGINEERING

105 School Creek Trail
Luxemburg, FL 34217
Phone: (920) 617-1042
Fax: (920) 617-1100
www.rice-inc.com
Florida Firm No: F-0100005061
Certificate of Authorization: #9090
Wayne K. Helmia
Registration No: 59092

WOOD CONDITION



PRODUCT REVISED
As complying with the Florida
Building Code
NOA-No. **23-1215.18**
Expiration Date: **10/23/2028**
By: *[Signature]*
Miami-Dade Product Control

PRODUCT REVISED
as complying with the Florida
Building Code
NOA-No. **22-0131.03**
Expiration Date **10/23/2023**

By *[Signature]*
Miami-Dade Product Control

P.E. STAMP



01/27/2022
COA: 9090

- NOTES:
1 SEE TABLE 3 ON SHEET 1 FOR ANCHOR SPACING.
2 SEE TABLE 4 ON SHEET 1 FOR FASTENER SPACING.

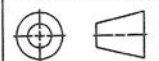
UNLESS OTHERWISE SPECIFIED
DIMENSION ARE IN INCHES.

TOLERANCE UNLESS NOTED:
X.X ±0.060
X.XX ±0.030
X.XXX ±0.010
ANGLE ±1°
FRACTION ±1/16

MAX HOLE BREAKOUT:
15% OF MATERIAL THICKNESS

5101 Blue Mound Road
Fort Worth, Texas 76106
Phone: 817-509-2300
Fax: 817-831-3110

THIRD ANGLE PROJECTION



PCI INDUSTRIES DOING BUSINESS AS

POTTORFF

DRAWING DESCR: WOOD CONDITION

PROJECT: ECD-545-MD

LOCATION:

CUSTOMER:

PROJ. MGR.:

DATE: 6/27/2018

SHEET: 9 of 19

CHK'D BY: NW

SCALE: 1"=1'-0"

DRAWN BY: LGH

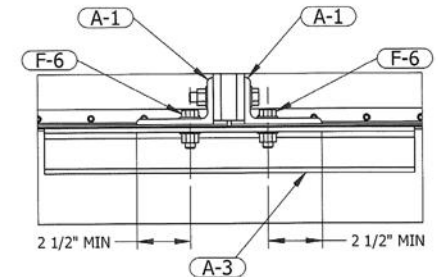
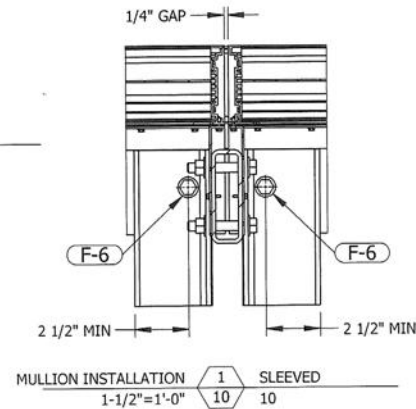
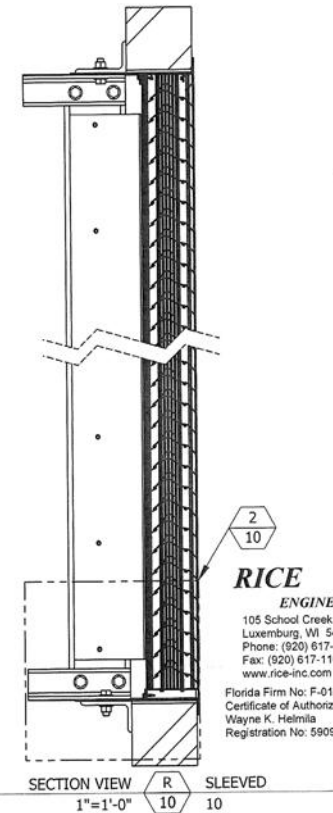
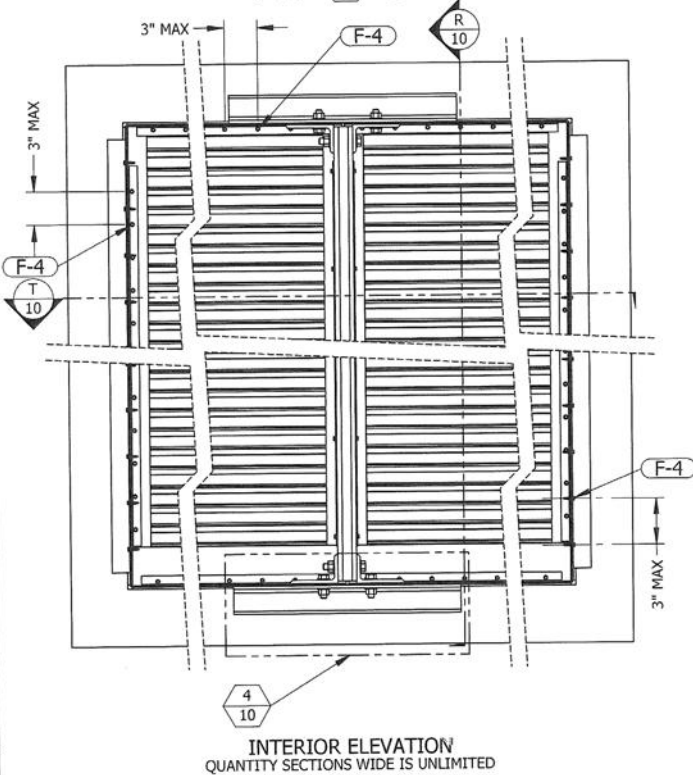
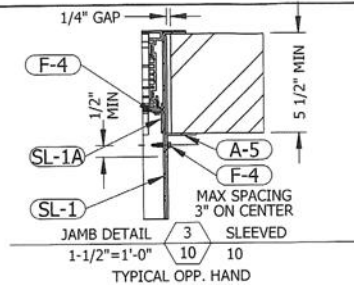
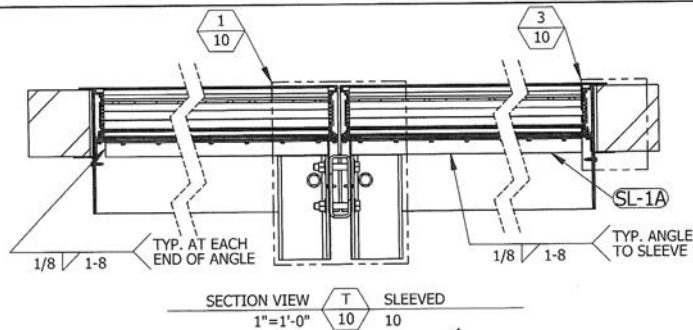
ORDER NUMBER

P.O. NUMBER

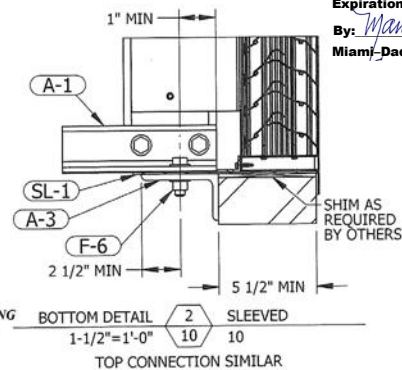
DRAWING NUMBER

ECD-545-MD NOA

REV. NO.	DESCRIPTION	DATE	DRAWN BY
4	UPDATED LABEL DETAIL	12/03/2021	BTF
3	ADDED ANCHOR SPACING FOR NEW, ALTERNATE 72" X 120" MAX SIZE	10/14/2021	BTF
2	UPDATED ANCHORAGE DESIGN AND SHAPE DETAILS	3/19/2021	NWW
1	INITIAL RELEASE	8/30/2018	LGH



QUANTITY SECTIONS WIDE IS UNLIMITED



RICE
ENGINEERING
105 School Creek Trail
Luxemburg, WI 54217
Phone: (920) 617-1042
Fax: (920) 617-1100
www.rice-inc.com
Florida Firm No: F-0100005061
Certificate of Authorization: #9090
Wayne K. Helmila
Registration No: 59092

PRODUCT RENEWED
as complying with the Florida
Building Code
NOA-No. **23-0620.02**

Expiration Date **10/23/2028**By *[Signature]*
Miami-Dade Product Control**SLEEVED**

PRODUCT REVISED
As complying with the Florida
Building Code
NOA-No. **23-1215.18**
Expiration Date: **10/23/2028**

By: *[Signature]*
Miami-Dade Product Control

PRODUCT REVISED
as complying with the Florida
Building Code
NOA-No. **22-0131.03**
Expiration Date **10/23/2023**

By *[Signature]*
Miami-Dade Product Control**P.E. STAMP**01/27/2022
COA: 9090UNLESS OTHERWISE SPECIFIED
DIMENSION ARE IN INCHES.

TOLERANCE UNLESS NOTED:
X.X ±0.050
X.XX ±0.030
X.XXX ±0.010
ANGLE ±1°
FRACTION ±1/16

MAX HOLE BREAKOUT:
15% OF MATERIAL THICKNESS5101 Blue Mound Road
Fort Worth, Texas 76106
Phone: 817-509-2300
Fax: 817-831-3110

THIRD ANGLE PROJECTION



PCI INDUSTRIES DOING BUSINESS AS

POTTORFF

DRAWING DESCR: SLEEVED

PROJECT: ECD-545-MD

LOCATION:

CUSTOMER:

PROJ. MGR.:

DATE: 6/27/2018

SHEET: 10 of 19

CHK'D BY: NW

SCALE: 1"=1'-0"

DRAWN BY: LGH

ORDER NUMBER

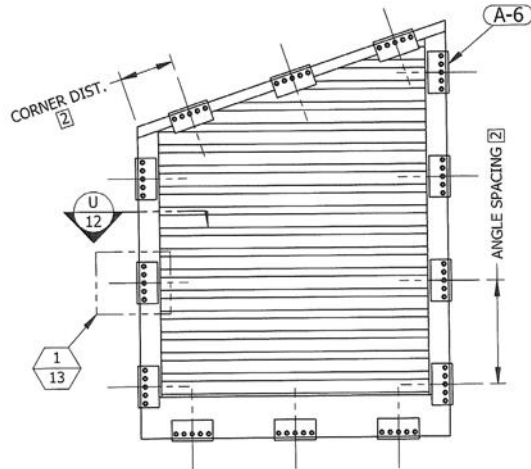
P.O. NUMBER

DRAWING NUMBER

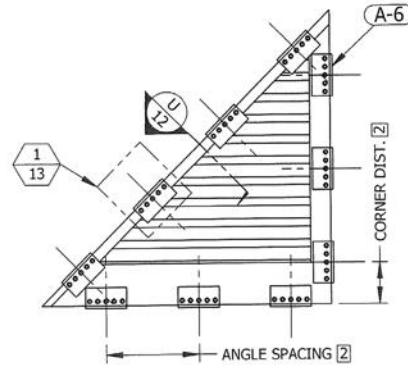
ECD-545-MD NOA

REV. NO.	DESCRIPTION	DATE	DRAWN BY
4	UPDATED LABEL DETAIL	12/03/2021	BTF
3	ADDED ANCHOR SPACING FOR NEW, ALTERNATE 72" X 120" MAX SIZE	10/14/2021	BTF
2	UPDATED ANCHORAGE DESIGN AND SHAPE DETAILS	3/19/2021	NWW
1	INITIAL RELEASE	8/30/2018	LGH

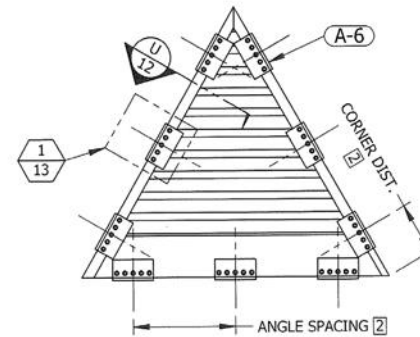
SPECIAL SHAPES INSTALLATION



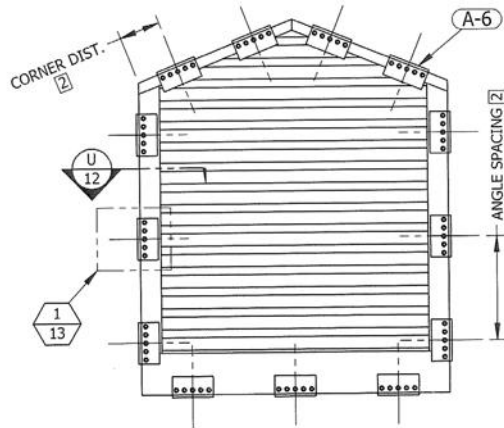
TRAPEZOID 1 11 11
1"=1'-0"



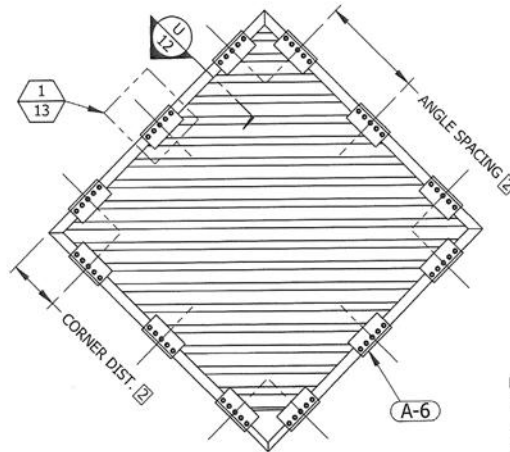
RIGHT TRIANGLE 2 11 11
1"=1'-0"



ISOSCELES TRIANGLE 3 11 11
1"=1'-0"



DOUBLE SLOPE TOP 4 11 11
1"=1'-0"



DIAMOND 5 11 11
1"=1'-0"

TABLE 5		
SHAPE CLIP ANGLE DIMENSIONS		
SUBSTRATE	ANGLE SPACING	CORNER DISTANCE
CONCRETE	8"	4"
GROUT-FILLED CMU	5 1/2"	2 3/4"
STEEL	10"	5"
WOOD	10"	5"

PRODUCT REVISED
As complying with the Florida Building Code
NOA-No. **23-1215.18**
Expiration Date: **10/23/2028**
By: *Manuel Ferraz*
Miami-Dade Product Control

RICE ENGINEERING
105 School Creek Trail
Luxemburg, WI 54217
Phone: (920) 617-1042
Fax: (920) 617-1100
www.rice-inc.com
Florida Firm No: F-0100005061
Certificate of Authorization: #9090
Wayne K. Helmils
Registration No. 59092

P.E. STAMP



PRODUCT RENEWED
as complying with the Florida Building Code
NOA-No. **23-0620.02**
Expiration Date **10/23/2028**

By: *R. Ferraz*
Miami-Dade Product Control

PRODUCT REVISED
as complying with the Florida Building Code
NOA-No. **22-0131.03**
Expiration Date **10/23/2023**

By: *R. Ferraz*
Miami-Dade Product Control

- NOTES:
1. SHAPED LOUVER WIDTH AND HEIGHT WILL NOT EXCEED 60" X 144".
2. ALLOWABLE CLIP ANGLE SPACING AND CORNER DISTANCE VARY BY SUBSTRATE. SEE TABLE 5 FOR ALLOWABLE SPACING AND CORNER DISTANCE DIMENSIONS FOR EACH SUBSTRATE TYPE.
3. CLIP ANGLES TO BE INSTALLED AROUND ENTIRE PERIMETER OF OPENING.

UNLESS OTHERWISE SPECIFIED
DIMENSION ARE IN INCHES.

TOLERANCE UNLESS NOTED:
X.X ±0.060
X.XX ±0.030
X.XXX ±0.010
ANGLE ±1°
FRACTION ±1/16

MAX HOLE BREAKOUT:
15% OF MATERIAL THICKNESS

5201 Blue Mound Road
Fort Worth, Texas 76106
Phone: 817-509-2300
Fax: 817-631-3110

THIRD ANGLE PROJECTION



PCI INDUSTRIES DOING BUSINESS AS

POTTORFF

DRAWING DESCR: SPECIAL SHAPES INSTALLATION

PROJECT: ECD-545-MD

LOCATION:

CUSTOMER:

PROJ. MGR.:

DRAWN BY: LGH

DATE: 6/27/2018

CHK'D BY: NW

ORDER NUMBER

P.O. NUMBER

DRAWING NUMBER

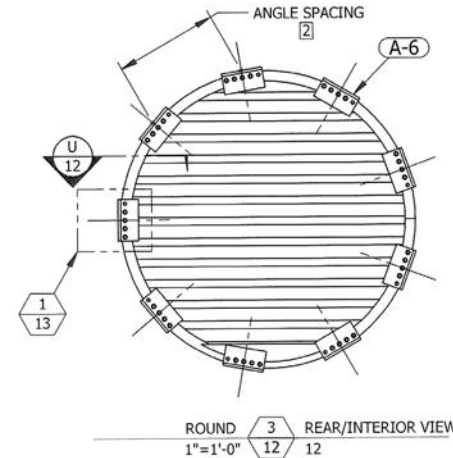
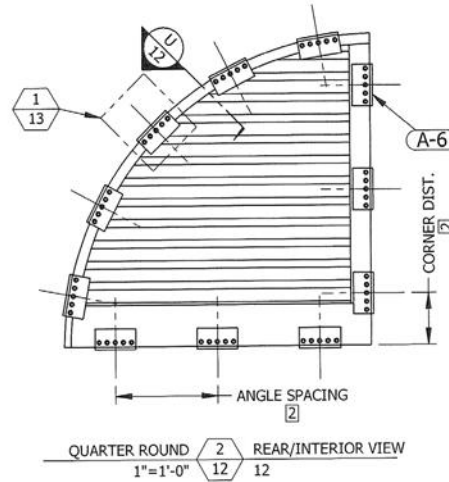
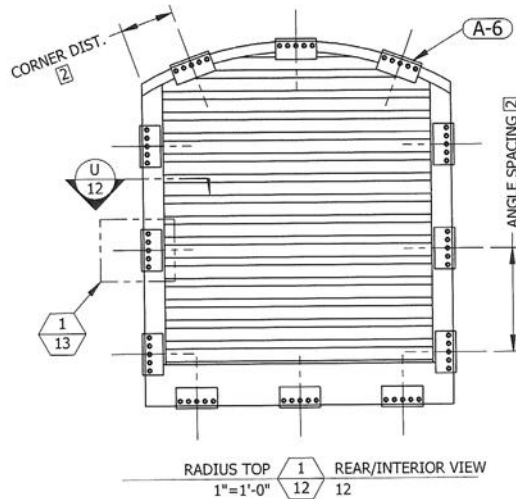
SHEET: 11 of 19

SCALE: 1-1/2"=1'-0"

ECD-545-MD NOA

REV. NO.	DESCRIPTION	DATE	DRAWN BY
4	UPDATED LABEL DETAIL	12/03/2021	BTf
3	ADDED ANCHOR SPACING FOR NEW, ALTERNATE 72" X 120" MAX SIZE	10/14/2021	BTf
2	UPDATED ANCHORAGE DESIGN AND SHAPE DETAILS	3/19/2021	NWW
1	INITIAL RELEASE	8/30/2018	LGH

SPECIAL SHAPES INSTALLATION



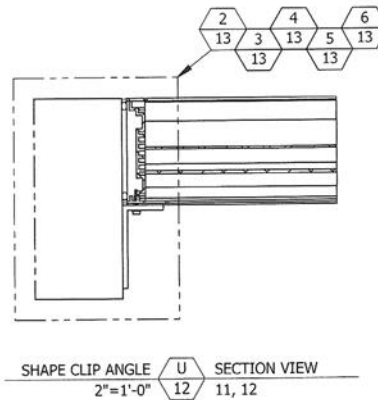
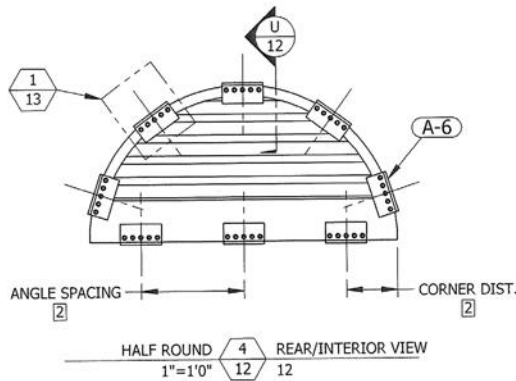
PRODUCT RENEWED
as complying with the Florida
Building Code
NOA-No. **23-0620.02**
Expiration Date **10/23/2028**
By *[Signature]*
Miami-Dade Product Control

RICE
ENGINEERING
105 School Creek Trail
Luxemburg, WI 54217
Phone: (920) 617-1042
Fax: (920) 617-1100
www.rice-inc.com
Florida Firm No: F-01000005061
Certificate of Authorization: #9090
Wayne K. Helmila
Registration No: 59092

PRODUCT REVISED
As complying with the Florida
Building Code
NOA-No. **23-1215.18**
Expiration Date: **10/23/2028**
By: *Manuel Fern*
Miami-Dade Product Control

PRODUCT REVISED
as complying with the Florida
Building Code
NOA-No. **22-0131.03**
Expiration Date **10/23/2023**
By *[Signature]*
Miami-Dade Product Control

P.E. STAMP



- NOTES:
1. SHAPED LOUVER WIDTH AND HEIGHT WILL NOT EXCEED 60" X 144".
2. ALLOWABLE CLIP ANGLE SPACING AND CORNER DISTANCE VARY BY SUBSTRATE. SEE TABLE 5, SHEET 11 FOR ALLOWABLE SPACING AND CORNER DISTANCE DIMENSIONS FOR EACH SUBSTRATE TYPE.
3. CLIP ANGLES TO BE INSTALLED AROUND ENTIRE PERIMETER OF OPENING.

UNLESS OTHERWISE SPECIFIED
DIMENSION ARE IN INCHES.

TOLERANCE UNLESS NOTED:
XX ±0.060
XXX ±0.030
XXX ±0.010
ANGLE ±1°
FRACTION ±1/16

MAX HOLE BREAKOUT:
15% OF MATERIAL THICKNESS

5101 Blue Mound Road
Fort Worth, Texas 76106
Phone: 817-509-2300
Fax: 817-831-3110

THIRD ANGLE PROJECTION



PCI INDUSTRIES DOING BUSINESS AS

POTTORFF

DRAWING DESCR: SPECIAL SHAPES INSTALLATION

PROJECT: ECD-545-MD

LOCATION:

CUSTOMER:

PROJ. MGR.:

DATE: 6/27/2018

SHEET: 12 of 19

CHK'D BY: NW

SCALE: 1-1/2"=1'-0"

DRAWN BY: LGH

ORDER NUMBER

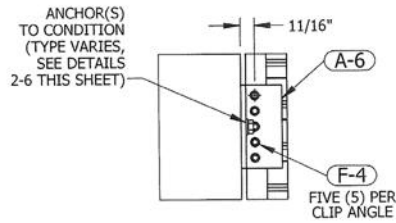
P.O. NUMBER

DRAWING NUMBER

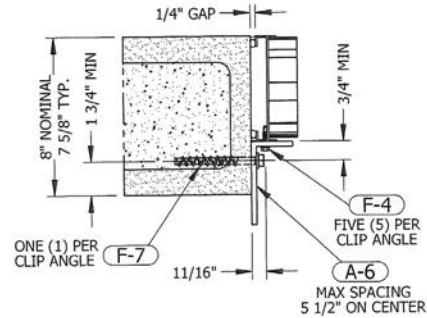
ECD-545-MD NOA

REV. NO.	DESCRIPTION	DATE	DRAWN BY
4	UPDATED LABEL DETAIL	12/03/2021	BTF
3	ADDED ANCHOR SPACING FOR NEW, ALTERNATE 72" X 120" MAX SIZE	10/14/2021	BTF
2	UPDATED ANCHORAGE DESIGN AND SHAPE DETAILS	3/19/2021	NWW
1	INITIAL RELEASE	8/30/2018	LGH

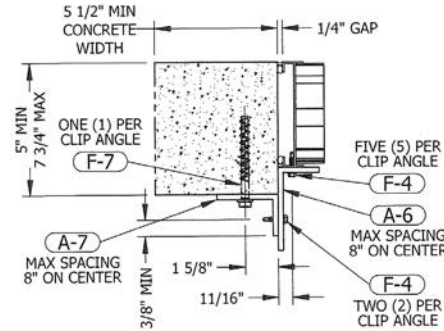
SPECIAL SHAPES INSTALLATION



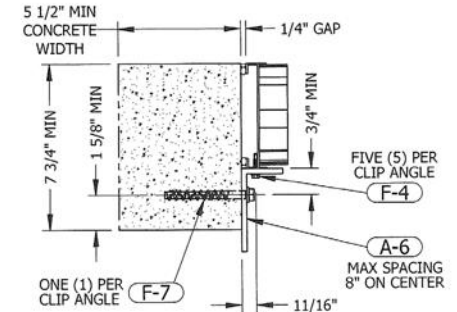
SHAPE CLIP ANGLE 1 13 REAR/INTERIOR DETAIL
2"=1'-0" 11, 12



SHAPE CLIP ANGLE 2 13 GROUT-FILLED CMU
2"=1'-0" 12



SHAPE CLIP ANGLE 3 13 CONCRETE ≤ 7 3/4\"/>

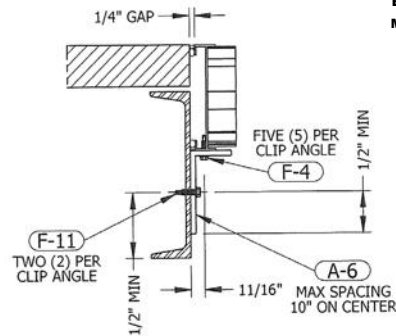


SHAPE CLIP ANGLE 4 13 CONCRETE ≥ 7 3/4\"/>

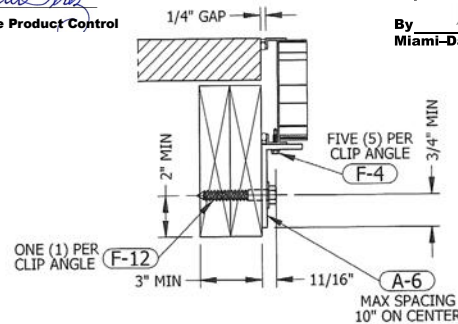
PRODUCT RENEWED
as complying with the Florida
Building Code
NOA-No. **23-0620.02**

Expiration Date **10/23/2028**

By *[Signature]*
Miami-Dade Product Control



SHAPE CLIP ANGLE 5 13 STEEL
2"=1'-0" 12



SHAPE CLIP ANGLE 6 13 WOOD
2"=1'-0" 12

PRODUCT REVISED
As complying with the Florida
Building Code
NOA-No. **23-1215.18**
Expiration Date: **10/23/2028**
By: *[Signature]*
Miami-Dade Product Control

PRODUCT REVISED
as complying with the Florida
Building Code
NOA-No. **22-0131.03**
Expiration Date **10/23/2023**
By: *[Signature]*
Miami-Dade Product Control

RICE
ENGINEERING
105 School Creek Trail
Luxemburg, WI 54217
Phone: (920) 617-1042
Fax: (920) 617-1100
www.rice-inc.com
Florida Firm No: F-0100005061
Certificate of Authorization: #9090
Wayne K. Helmila
Registration No: 59092

P.E. STAMP

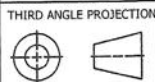


UNLESS OTHERWISE SPECIFIED
DIMENSION ARE IN INCHES.

5101 Blue Mound Road
Fort Worth, Texas 76106
Phone: 817-509-2300
Fax: 817-831-3110

TOLERANCE UNLESS NOTED:
X.X ±0.060
X.XX ±0.030
X.XXX ±0.010
ANGLE ±1°
FRACTION ±1/16

MAX HOLE BREAKOUT:
15% OF MATERIAL THICKNESS



PCI INDUSTRIES DOING BUSINESS AS

POTTORFF

DRAWING DESCR: SPECIAL SHAPES INSTALLATION

PROJECT: ECD-545-MD

LOCATION:

CUSTOMER:

PROJ. MGR.:

DATE: 6/27/2018

SHEET: 13 of 19

CHK'D BY: NW

SCALE: 1-1/2"=1'-0"

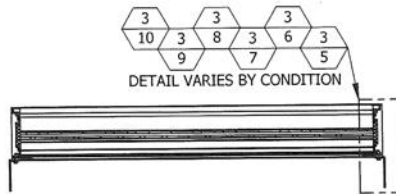
DRAWN BY: LGH

ORDER NUMBER

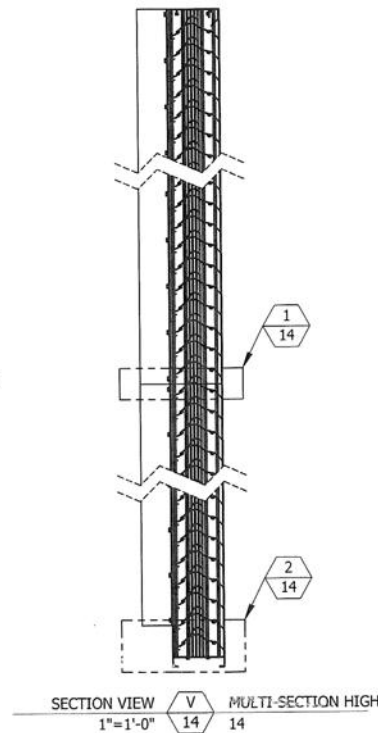
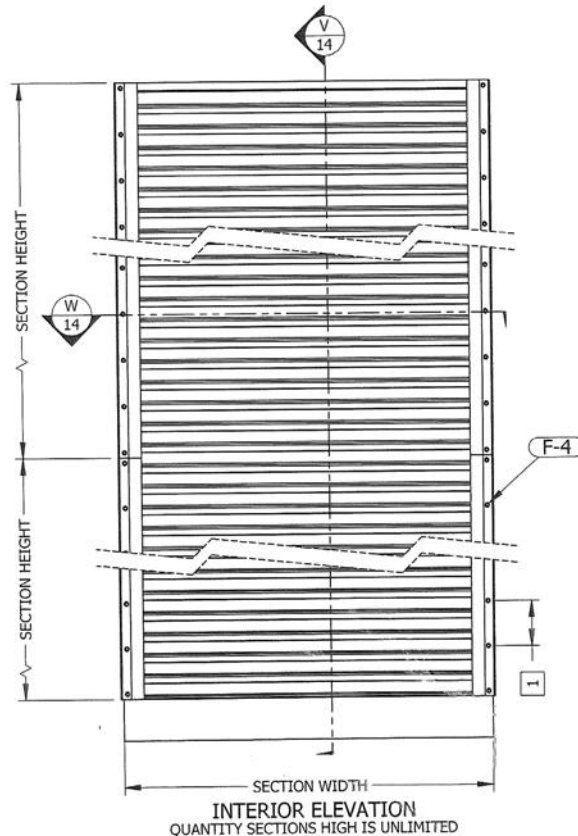
P.O. NUMBER

DRAWING NUMBER

ECD-545-MD NOA



SECTION VIEW $\frac{1}{14}$ MULTI-SECTION HIGH
1"=1'-0"



PRODUCT RENEWED
as complying with the Florida
Building Code

NOA-No. **23-0620.02**

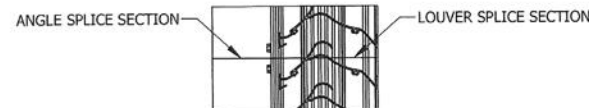
Expiration Date **10/23/2028**

By *[Signature]*
Miami-Dade Product Control

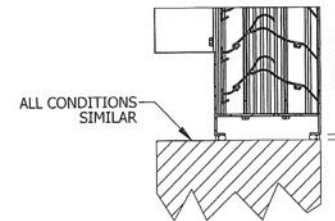
MULTI-SECTION HIGH

PRODUCT REVISED
As complying with the Florida
Building Code
NOA-No. **23-1215.18**
Expiration Date: **10/23/2028**
By: *[Signature]*
Miami-Dade Product Control

PRODUCT REVISED
as complying with the Florida
Building Code
NOA-No. **22-0131.03**
Expiration Date **10/23/2023**
By: *[Signature]*
Miami-Dade Product Control



SPLICE SECTION $\frac{1}{14}$ MULTI-SECTION HIGH
2"=1'-0"



BOTTOM DETAIL $\frac{2}{14}$ MULTI-SECTION HIGH
2"=1'-0"

TOP CONNECTION SIMILAR

NOTES:
1 SEE TABLE 4 ON SHEET 1 FOR FASTENER SPACING.

RICE
ENGINEERING
105 School Creek Trail
Luxemburg, WI 54217
Phone: (920) 617-1042
Fax: (920) 617-1100
www.rice-inc.com
Florida Firm No: F-01000005061
Certificate of Authorization: #9090
Wayne K. Helmila
Registration No: 59092

P.E. STAMP



UNLESS OTHERWISE SPECIFIED
DIMENSION ARE IN INCHES.

TOLERANCE UNLESS NOTED:
X.X ±0.060
X.XX ±0.030
X.XXX ±0.010
ANGLE ±1°
FRACTION ±1/16

MAX HOLE BREAKOUT:
15% OF MATERIAL THICKNESS

5101 Blue Mound Road
Fort Worth, Texas 76106
Phone: 817-509-2300
Fax: 817-931-3110

THIRD ANGLE PROJECTION

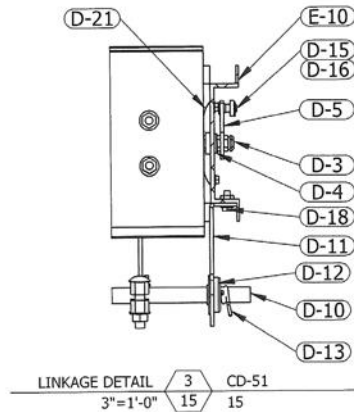
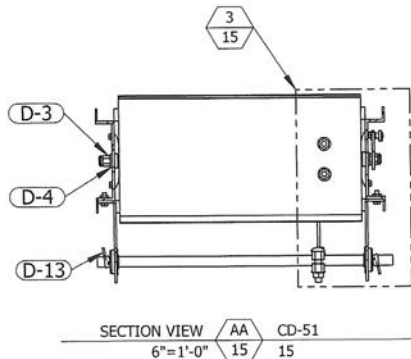
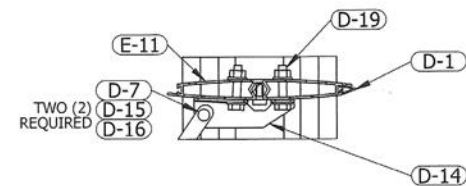
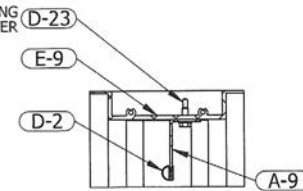


PCI INDUSTRIES DOING BUSINESS AS

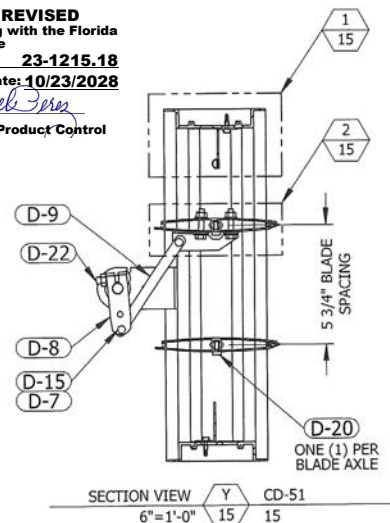
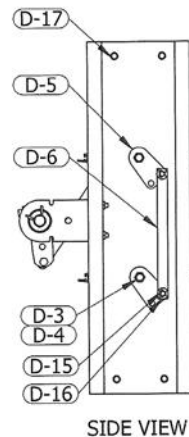
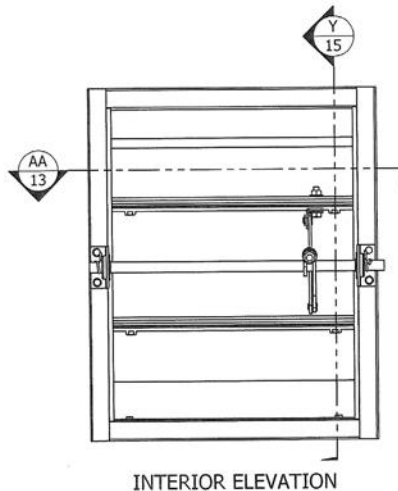
POTTORFF

DRAWING DESCR: MULTI-SECTION HIGH				
PROJECT: ECD-545-MD				
LOCATION:				
CUSTOMER:				
PROJ. MGR.:	DRAWN BY: LGH			
DATE: 6/27/2018	CHK'D BY: NW	ORDER NUMBER	P.O. NUMBER	DRAWING NUMBER
SHEET: 14 of 19	SCALE: 1"=1'-0"			ECD-545-MD NOA

REV. NO.	DESCRIPTION	DATE	DRAWN BY
4	UPDATED LABEL DETAIL	12/03/2021	BTF
3	ADDED ANCHOR SPACING FOR NEW, ALTERNATE 72" X 120" MAX SIZE	10/14/2021	BTF
2	UPDATED ANCHORAGE DESIGN AND SHAPE DETAILS	3/19/2021	NWW
1	INITIAL RELEASE	8/30/2018	LGH

MAX SPACING
12" ON CENTER**CD-51 DAMPER**

PRODUCT REVISED
As complying with the Florida
Building Code
NOA-No. **23-1215.18**
Expiration Date: **10/23/2028**
By: *Manuel Fern*
Miami-Dade Product Control



PRODUCT REVISED
as complying with the Florida
Building Code
NOA-No. **22-0131.03**
Expiration Date **10/23/2023**

By *Manuel Fern*
Miami-Dade Product Control

PRODUCT RENEWED
as complying with the Florida
Building Code
NOA-No. **23-0620.02**
Expiration Date **10/23/2028**

By *Manuel Fern*
Miami-Dade Product Control

P.E. STAMP

01/27/2022
COA: 9090

RICE
ENGINEERING
105 School Creek Trail
Luxemburg, WI 54217
Phone: (920) 617-1042
Fax: (920) 617-1100
www.rice-inc.com
Florida Firm No: F-01000005061
Certificate of Authorization: #9090
Wayne K. Helmlia
Registration No: 59092

UNLESS OTHERWISE SPECIFIED
DIMENSION ARE IN INCHES.

TOLERANCE UNLESS NOTED:
XX ±0.060
XXX ±0.030
XXX ±0.010
ANGLE ±1°
FRACTION ±1/16

MAX HOLE BREAKOUT:
15% OF MATERIAL THICKNESS

5101 Blue Mound Road
Fort Worth, Texas 76106
Phone: 817-509-2300
Fax: 817-831-3110

THIRD ANGLE PROJECTION



PCI INDUSTRIES DOING BUSINESS AS

POTTORFF

DRAWING DESCR: CD-51 DAMPER

PROJECT: ECD-545-MD

LOCATION:

CUSTOMER:

PROJ. MGR.:

DATE: 6/27/2018

SHEET: 15 of 19

CHK'D BY: NW

SCALE: 2"=1'-0"

DRAWN BY: LGH

ORDER NUMBER

P.O. NUMBER

DRAWING NUMBER

ECD-545-MD NOA

REV. NO.	DESCRIPTION	DATE	DRAWN BY
4	UPDATED LABEL DETAIL	12/03/2021	BTF
3	ADDED ANCHOR SPACING FOR NEW, ALTERNATE 72" X 120" MAX SIZE	10/14/2021	BTF
2	UPDATED ANCHORAGE DESIGN AND SHAPE DETAILS	3/19/2021	NWW
1	INITIAL RELEASE	8/30/2018	LGH

PRODUCT RENEWED
as complying with the Florida
Building Code
NOA-No. **23-0620.02**

Expiration Date **10/23/2028**

By *[Signature]*
Miami-Dade Product Control

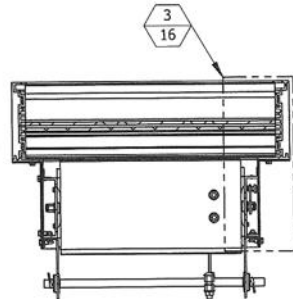
PRODUCT REVISED
As complying with the Florida
Building Code
NOA-No. **23-1215.18**
Expiration Date: **10/23/2028**

By: *[Signature]*
Miami-Dade Product Control

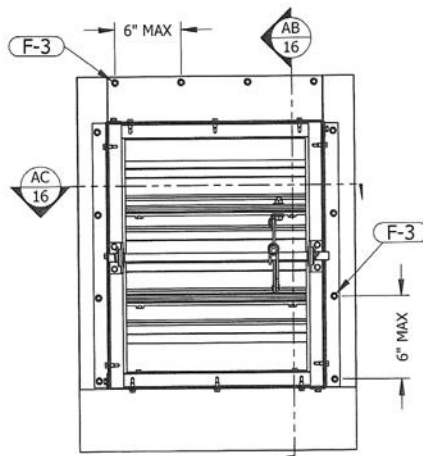
PRODUCT REVISED
as complying with the Florida
Building Code
NOA-No. **22-0131.03**
Expiration Date **10/23/2023**

By *[Signature]*
Miami-Dade Product Control

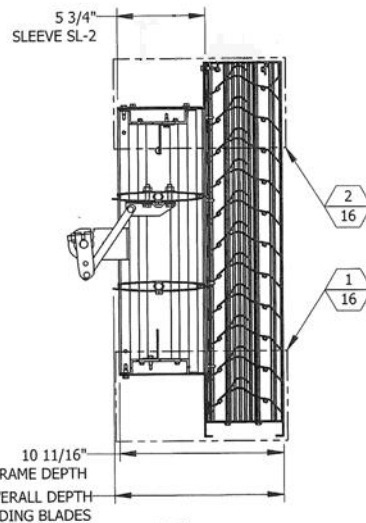
ECD-545-MD WITH CD-51 DAMPER



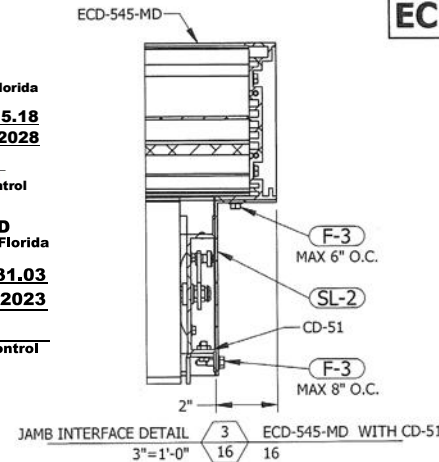
SECTION VIEW $\frac{AC}{16}$ ECD-545-MD WITH CD-51
1-1/2"=1'-0" $\frac{16}{16}$



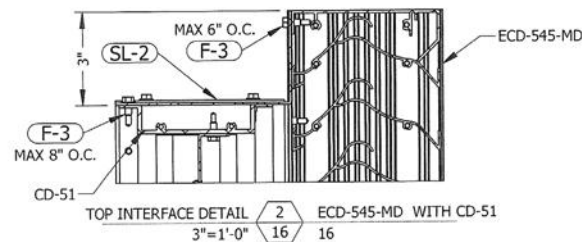
INTERIOR ELEVATION



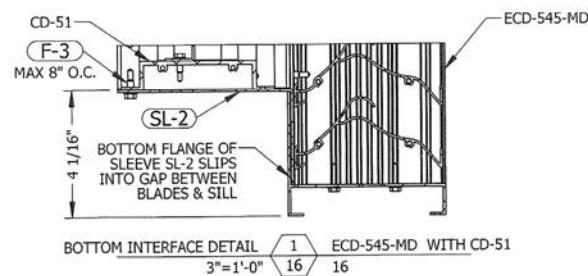
SECTION VIEW $\frac{AB}{16}$ ECD-545-MD WITH CD-51
1-1/2"=1'-0" $\frac{16}{16}$



JAMB INTERFACE DETAIL $\frac{3}{16}$ ECD-545-MD WITH CD-51
3"=1'-0" $\frac{16}{16}$

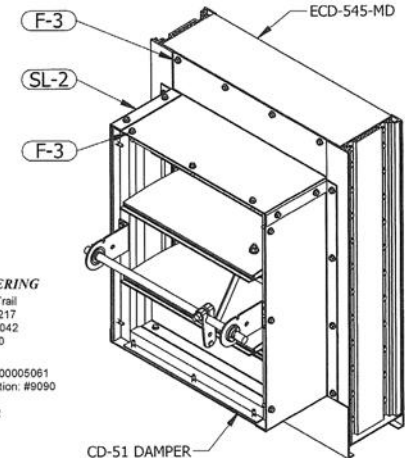


TOP INTERFACE DETAIL $\frac{2}{16}$ ECD-545-MD WITH CD-51
3"=1'-0" $\frac{16}{16}$



BOTTOM INTERFACE DETAIL $\frac{1}{16}$ ECD-545-MD WITH CD-51
3"=1'-0" $\frac{16}{16}$

RICE
ENGINEERING
105 School Creek Trail
Luxemburg, WI 54217
Phone: (920) 617-1042
Fax: (920) 617-1100
www.rice-inc.com
Florida Firm No: F-01000005061
Certificate of Authorization: #9090
Wayne K. Helmila
Registration No: 59092



CD-51 DAMPER
MECHANICALLY
FASTENED TO
SLEEVE SL-2

P.E. STAMP



01/27/2022
COA: 9090

UNLESS OTHERWISE SPECIFIED
DIMENSIONS ARE IN INCHES.

TOLERANCE UNLESS NOTED:
X.X ±0.060
X.XX ±0.030
X.XXX ±0.010
ANGLE ±1°
FRACTION ±1/16

MAX HOLE BREAKOUT:
15% OF MATERIAL THICKNESS

5101 Blue Mound Road
Fort Worth, Texas 76106
Phone: 817-509-2300
Fax: 817-831-3110

THIRD ANGLE PROJECTION



PCI INDUSTRIES DOING BUSINESS AS

POTTORFF

DRAWING DESCR: ECD-545-MD WITH CD-51 DAMPER

PROJECT: ECD-545-MD

LOCATION:

CUSTOMER:

PROJ. MGR.:

DATE: 6/27/2018

SHEET: 16 of 19

CHK'D BY: NW

SCALE: 1-1/2"=1'-0"

DRAWN BY: LGH

ORDER NUMBER

P.O. NUMBER

DRAWING NUMBER

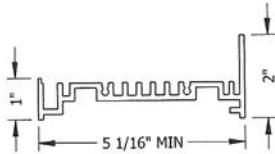
ECD-545-MD NOA

PRODUCT RENEWED
as complying with the Florida
Building Code
NOA-No. **23-0620.02**

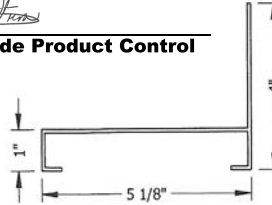
Expiration Date **10/23/2028**

By *[Signature]*
Miami-Dade Product Control

PART NO: E-1
PART NAME: LOUVER JAMB
MATERIAL: 0.125" THICK
6063-T5 EXTRUDED
ALUMINUM
SCALE: 4"=1'-0"

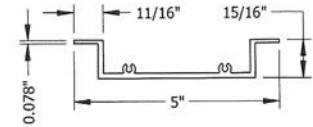


PART NO: E-5
PART NAME: LOUVER SILL
MATERIAL: 0.081" THICK
6063-T5 EXTRUDED
ALUMINUM
SCALE: 4"=1'-0"

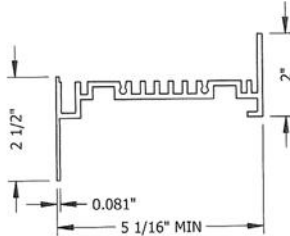


PART NO: E-9
PART NAME: DAMPER HEAD, SILL
MATERIAL: 0.125" THICK
6063-T5 EXTRUDED
ALUMINUM
SCALE: 4"=1'-0"

BILL OF MATERIALS

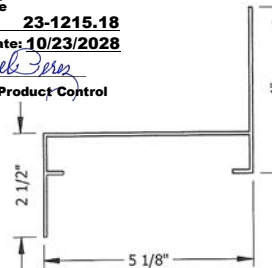


PART NO: E-2
PART NAME: LOUVER JAMB,
FLANGED
MATERIAL: 0.125" THICK
6063-T5 EXTRUDED
ALUMINUM
SCALE: 4"=1'-0"

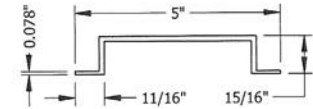


PRODUCT REVISED
As complying with the Florida
Building Code
NOA-No. **23-1215.18**
Expiration Date: **10/23/2028**
By: *[Signature]*
Miami-Dade Product Control

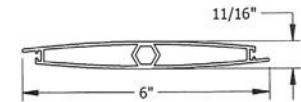
PART NO: E-6
PART NAME: LOUVER SILL,
FLANGED
MATERIAL: 0.081" THICK
6063-T5 EXTRUDED
ALUMINUM
SCALE: 4"=1'-0"



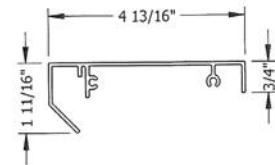
PART NO: E-10
PART NAME: DAMPER JAMB
MATERIAL: 0.125" THICK
6063-T5 EXTRUDED
ALUMINUM
SCALE: 4"=1'-0"



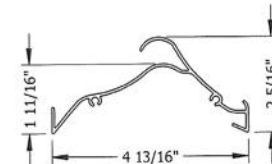
PART NO: E-11
PART NAME: DAMPER BLADE, FULL
MATERIAL: 0.070" THICK
6063-T5 EXTRUDED
ALUMINUM
SCALE: 4"=1'-0"



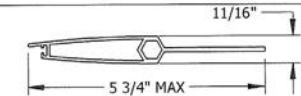
PART NO: E-3
PART NAME: LOUVER HEAD
MATERIAL: 0.081" THICK
6063-T5 EXTRUDED
ALUMINUM
SCALE: 4"=1'-0"



PART NO: E-7
PART NAME: LOUVER BLADE
MATERIAL: 0.063" THICK
6063-T5 EXTRUDED
ALUMINUM
SCALE: 4"=1'-0"



PART NO: E-12
PART NAME: DAMPER BLADE, HALF
MATERIAL: 0.070" THICK
6063-T5 EXTRUDED
ALUMINUM
SCALE: 4"=1'-0"



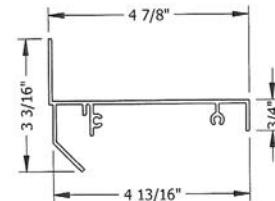
P.E. STAMP

RICE
ENGINEERING
105 School Creek Trail
Luxemburg, WI 54217
Phone: (920) 617-1042
Fax: (920) 617-1100
www.rice-inc.com
Florida Firm No: F-0100005061
Certificate of Authorization: #9090
Wayne K. Helmila
Registration No: 59092

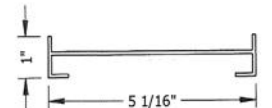


PRODUCT REVISED
as complying with the Florida
Building Code
NOA-No. **22-0131.03**
Expiration Date **10/23/2023**
By *[Signature]*
Miami-Dade Product Control

PART NO: E-4
PART NAME: LOUVER HEAD,
FLANGED
MATERIAL: 0.081" THICK
6063-T5 EXTRUDED
ALUMINUM
SCALE: 4"=1'-0"



PART NO: E-8
PART NAME: ROLLFRAME EXTRUSION
MATERIAL: 0.081" THICK
6063-T5 EXTRUDED
ALUMINUM
SCALE: 4"=1'-0"



UNLESS OTHERWISE SPECIFIED
DIMENSION ARE IN INCHES.

5101 Blue Mound Road
Fort Worth, Texas 76106
Phone: 817-509-2300
Fax: 817-831-3110

TOLERANCE UNLESS NOTED:
X.X ±0.060
X.XX ±0.030
X.XXX ±0.010
ANGLE ±1°
FRACTION ±1/16

MAX HOLE BREAKOUT:
15% OF MATERIAL THICKNESS

THIRD ANGLE PROJECTION



PCI INDUSTRIES DOING BUSINESS AS

POTTORFF

DRAWING DESCR: BILL OF MATERIALS

PROJECT: ECD-545-MD

LOCATION:

CUSTOMER:

PROJ. MGR.:

DRAWN BY: LGH

DATE: 6/27/2018

CHK'D BY: NW

ORDER NUMBER

P.O. NUMBER

DRAWING NUMBER

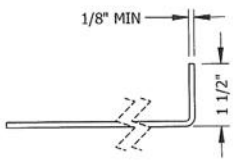
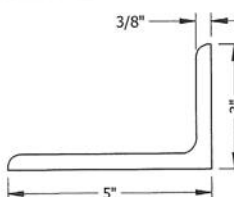
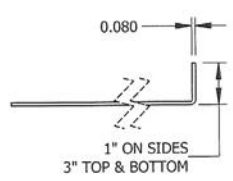
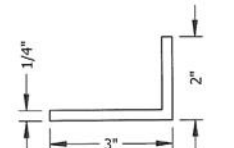
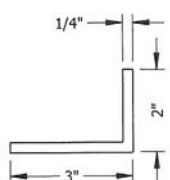
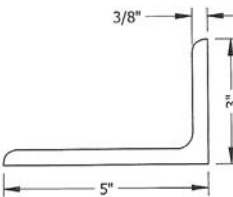
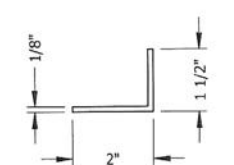
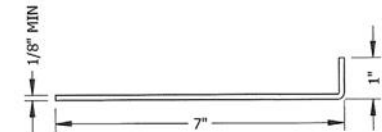
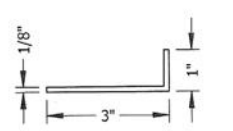
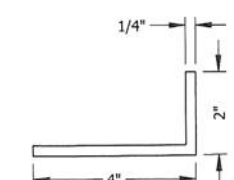

SHEET: 17 of 19

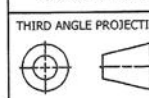
SCALE: AS NOTED

ECD-545-MD NOA

1:0 ENGINEERING PROJECTS\LOUVERS\CD-545-MD NOA1

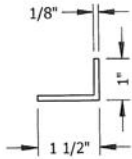
REV. NO.	DESCRIPTION	DATE	DRAWN BY
4	UPDATED LABEL DETAIL	12/03/2021	BTF
3	ADDED ANCHOR SPACING FOR NEW, ALTERNATE 72" X 120" MAX SIZE	10/14/2021	BTF
2	UPDATED ANCHORAGE DESIGN AND SHAPE DETAILS	3/19/2021	NWW
1	INITIAL RELEASE	8/30/2018	LGH

<p>PART NO: SL-1</p> <p>PART NAME: SLEEVE, LOUVER</p> <p>MATERIAL: MIN 1/8" THICK 5052-H32 SHEET ALUMINUM</p> <p>SCALE: 4"=1'-0"</p>		<p>PART NO: A-3</p> <p>PART NAME: SHELF ANGLE, MULLION</p> <p>MATERIAL: 5" X 3" X 3/8" X 24" LONG 6061-T6 EXTRUDED ALUMINUM</p> <p>SCALE: 4"=1'-0"</p>		<p>PRODUCT RENEWED as complying with the Florida Building Code NOA-No. 23-0620.02 Expiration Date 10/23/2028</p> <p>By <i>[Signature]</i> Miami-Dade Product Control</p>	<div style="border: 2px solid black; padding: 5px; font-weight: bold; font-size: 1.2em;">BILL OF MATERIALS</div>
<p>PART NO: SL-2</p> <p>PART NAME: SLEEVE, DAMPER</p> <p>MATERIAL: 0.080 THICK 5052-H32 SHEET ALUMINUM</p> <p>SCALE: 4"=1'-0"</p>		<p>PART NO: A-4</p> <p>PART NAME: CONTINUOUS SUPPORT ANGLE</p> <p>MATERIAL: 3" X 2" X 1/4" 6063-T5 EXTRUDED ALUMINUM</p> <p>SCALE: 4"=1'-0"</p>		<p>PART NO: A-7</p> <p>PART NAME: SUPPORT ANGLE, SHAPES</p> <p>MATERIAL: 3" X 2" X 1/4" X 4" LONG 6063-T5 EXTRUDED ALUMINUM</p> <p>SCALE: 4"=1'-0"</p>	
<p>PART NO: A-1</p> <p>PART NAME: CLIP ANGLE, MULLION</p> <p>MATERIAL: 5" X 3" X 3/8" X 10" LONG 6061-T6 EXTRUDED ALUMINUM</p> <p>SCALE: 4"=1'-0"</p>		<p>PART NO: A-5</p> <p>PART NAME: RETAINING ANGLE</p> <p>MATERIAL: 2" X 1-1/2" X 1/8" 6063-T5 EXTRUDED ALUMINUM</p> <p>SCALE: 4"=1'-0"</p>		<p>PART NO: A-8</p> <p>PART NAME: MULLION ATTACHMENT ANGLE</p> <p>MATERIAL: MIN. 1/8" THICK 5052-H32 SHEET ALUMINUM</p> <p>SCALE: 4"=1'-0"</p>	
<p>PART NO: A-2</p> <p>PART NAME: CONTINUOUS ANGLE</p> <p>MATERIAL: 3" X 1" X 1/8" 6063-T5 EXTRUDED ALUMINUM</p> <p>SCALE: 4"=1'-0"</p>		<p>PART NO: A-6</p> <p>PART NAME: CLIP ANGLE, SHAPES</p> <p>MATERIAL: 4" X 2" X 1/4" X 4" LONG 6063-T5 EXTRUDED ALUMINUM</p> <p>SCALE: 4"=1'-0"</p>		<div style="border: 1px solid black; padding: 5px;"> <p>RICE ENGINEERING 105 School Creek Trail Luxemburg, WI 54217 Phone: (920) 617-1042 Fax: (920) 617-1100 www.rice-inc.com Florida Firm No: F-01000005061 Certificate of Authorization: #9090 Wayne K. Helmila Registration No: 59092</p> <p>PRODUCT REVISED As complying with the Florida Building Code NOA-No. 23-1215.18 Expiration Date: 10/23/2028 By: <i>[Signature]</i> Miami-Dade Product Control</p> <p>PRODUCT REVISED as complying with the Florida Building Code NOA-No. 22-0131.03 Expiration Date 10/23/2023 By: <i>[Signature]</i> Miami-Dade Product Control</p> </div> <div style="border: 1px dashed black; padding: 10px; margin-top: 10px;"> <p style="text-align: center;">P.E. STAMP</p>  <p style="text-align: right;">01/27/2022 COA: 9090</p> </div>	

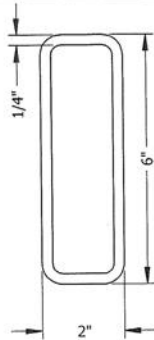
<p>UNLESS OTHERWISE SPECIFIED DIMENSION ARE IN INCHES.</p> <p>TOLERANCE UNLESS NOTED: X.X ±0.060 X.XX ±0.030 X.XXX ±0.010 ANGLE ±1° FRACTION ±1/16</p> <p>MAX HOLE BREAKOUT: 15% OF MATERIAL THICKNESS</p>	<p>5101 Blue Mound Road Fort Worth, Texas 76106 Phone: 817-509-2300 Fax: 817-831-3110</p> <p>THIRD ANGLE PROJECTION</p> 	<p>PCI INDUSTRIES DOING BUSINESS AS</p> <p style="font-size: 1.5em; font-weight: bold; text-align: center;">POTTORFF</p>	<p>DRAWING DESCR: BILL OF MATERIALS</p> <p>PROJECT: ECD-545-MD</p> <p>LOCATION:</p> <p>CUSTOMER:</p> <table border="1" style="width:100%; border-collapse: collapse;"> <tr> <td>PROJ. MGR.:</td> <td>DRAWN BY: LGH</td> </tr> <tr> <td>DATE: 6/27/2018</td> <td>CHK'D BY: NW</td> </tr> <tr> <td>SHEET: 18 of 19</td> <td>SCALE: AS NOTED</td> </tr> </table>	PROJ. MGR.:	DRAWN BY: LGH	DATE: 6/27/2018	CHK'D BY: NW	SHEET: 18 of 19	SCALE: AS NOTED
PROJ. MGR.:	DRAWN BY: LGH								
DATE: 6/27/2018	CHK'D BY: NW								
SHEET: 18 of 19	SCALE: AS NOTED								

REV. NO.	DESCRIPTION	DATE	DRAWN BY
4	UPDATED LABEL DETAIL	12/03/2021	BTF
3	ADDED ANCHOR SPACING FOR NEW, ALTERNATE 72" X 120" MAX SIZE	10/14/2021	BTF
2	UPDATED ANCHORAGE DESIGN AND SHAPE DETAILS	3/19/2021	NWW
1	INITIAL RELEASE	8/30/2018	LGH

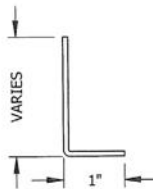
PART NO: SL-1A
PART NAME: SLEEVE ATTACHMENT ANGLE
MATERIAL: 1-1/2" X 1" X 1/8" 6063-T5
EXTRUDED ALUMINUM
SCALE: 4"=1'-0"



PART NO: S-1
PART NAME: TUBE, MULLION SUPPORT
MATERIAL: 6" X 2" X 1/4" HSS
ASTM A500 Gr. B
Fy= 46 KSI
SCALE: 4"=1'-0"



PART NO: A-9
PART NAME: DAMPER STOP
MATERIAL: 0.080" THICK 5052-H32
SHEET ALUMINUM
SCALE: 6"=1'-0"



PRODUCT REVISED
As complying with the Florida
Building Code
NOA-No. **23-1215.18**
Expiration Date: **10/23/2028**
By: *Manuel Perez*
Miami-Dade Product Control

MISCELLANEOUS FASTENERS	
PART NO.	DESCRIPTION
F-1	#10-24 X 3/4" LONG, HWH, 410 SST, 'F' POINT MACHINE SCREW
F-2	#10-16 X 2" LONG, HWH, 410 SST, TEK SELF-DRILLING SCREW
F-3	#12-14 X 3/4" LONG, HWH, 410 SST, TEK SELF-DRILLING SCREW
F-4	#12-14 X 1" LONG, HWH, TEK SELF-DRILLING SCREW, 300-SERIES SST
F-5	5/8-11 X 4" LONG, 18-8 SST, HEX BOLT, NUT, AND TWO (2) FLAT WASHERS
F-6	5/8-11 X 2" LONG, 18-8 SST, HEX BOLT, NUT, AND TWO (2) FLAT WASHERS
F-7	3/8" X 4" DEWALT SCREW-BOLT+, GALV. FINISH
F-8	5/8" X 4" DEWALT SCREW-BOLT+, GALV. FINISH
F-9	5/8" X 6" DEWALT SCREW-BOLT+, GALV. FINISH
F-11	1/4-14 X 1" LONG, HWH, TEK SELF-DRILLING SCREW, 300-SERIES SST
F-12	1/2" X 3-1/2" LONG HEX LAG BOLT AND FLAT WASHER, 300-SERIES SST

MISCELLANEOUS DAMPER PARTS		
PART NO.	DESCRIPTION	MATERIAL
D-1	BLADE SEAL	PVC
D-2	STOP SEAL	PVC
D-3	HEX AXLE	ZINC-PLATED STEEL
D-4	HEX BUSHING	304 SST
D-5	PARALLEL CAM	ZINC-PLATED STEEL
D-6	LINK BAR, 1/2" WIDE X 1/8" THICK	GALV. STEEL
D-7	WASHER, 1/4" I.D., 1/2" O.D.	NYLON
D-8	SPRING ARM, 10-GA	GALV. STEEL
D-9	DRIVE ROD, 1/2" WIDE X 1/8" THICK	GALV. STEEL
D-10	JACKSHAFT, 1/2" DIA.	ZINC-PLATED STEEL
D-11	JACKSHAFT BRACKET, 12 GA.	GALV. STEEL
D-12	JACKSHAFT BEARING	STEEL
D-13	JACKSHAFT SPRING CLIP	SPRING STEEL
D-14	DRIVE BRACKET, 14 GA.	GALV. STEEL
D-15	LINKAGE PIN, 1/4"	304 SST
D-16	E-RING, 1/4"	ZINC-PLATED STEEL
D-17	#8-18 X 1" LONG, HWH, NEEDLE POINT SCREW	ZINC-PLATED STEEL
D-18	#10-32 X 1/2" LONG HEX BOLT WITH KEPS NUT	ZINC-PLATED STEEL
D-19	1/4-20 X 1-1/4" LONG HEX BOLT WITH KEPS NUT	ZINC-PLATED STEEL
D-20	1/4-20 X 1/2" LONG HEX BOLT	ZINC-PLATED STEEL
D-21	JAMB SEAL, 2-9/16" X 5/16" X 0.007" THICK	302 SST
D-22	5/16-18 X 1-1/2" LONG CARRIAGE BOLT WITH LOCKNUT	ZINC-PLATED STEEL
D-23	#10-16 X 3/4" LONG, HWH, TEK SELF-DRILLING SCREW	ZINC-PLATED STEEL

NOTE: ALL INSTALLATION FASTENERS AND ANCHORS SHALL BE OF CORROSION-RESISTANT STEEL
{300-SERIES STAINLESS OR GALVANIZED}

UNLESS OTHERWISE SPECIFIED
DIMENSION ARE IN INCHES.
TOLERANCE UNLESS NOTED:
XXX ±0.060
XXX ±0.030
XXX ±0.010
ANGLE ±1°
FRACTION ±1/16

MAX HOLE BREAKOUT:
15% OF MATERIAL THICKNESS

5101 Blue Mound Road
Fort Worth, Texas 76106
Phone: 817-509-2300
Fax: 817-831-3110

THIRD ANGLE PROJECTION



PCI INDUSTRIES DOING BUSINESS AS

POTTORFF

DRAWING DESCR: BILL OF MATERIALS

PROJECT: ECD-545-MD

LOCATION:

CUSTOMER:

PROJ. MGR.:

DATE: 6/27/2018

SHEET: 19 of 19

CHK'D BY: NW

SCALE: AS NOTED

DRAWN BY: LGH

ORDER NUMBER

P.O. NUMBER

DRAWING NUMBER

ECD-545-MD NOA

BILL OF MATERIALS

PRODUCT RENEWED
as complying with the Florida
Building Code
NOA-No. **23-0620.02**

Expiration Date **10/23/2028**

By: *[Signature]*
Miami-Dade Product Control

PRODUCT REVISED
as complying with the Florida
Building Code
NOA-No. **22-0131.03**

Expiration Date **10/23/2023**

By: *[Signature]*
Miami-Dade Product Control

RICE
ENGINEERING

105 School Creek Trail
Luxemburg, WI 54217
Phone: (920) 617-1042
Fax: (920) 617-1100
www.rice-inc.com

Florida Firm No: F-01000005061
Certificate of Authorization: #9090
Wayne K. Helmila
Registration No: 59092

P.E. STAMP



01/27/2022
COA: 9090