



DEPARTMENT OF REGULATORY AND ECONOMIC RESOURCES (RER)  
 BOARD AND CODE ADMINISTRATION DIVISION  
 NOTICE OF ACCEPTANCE (NOA)

**Quality Engineered Products Co., Inc.**  
**4506 Quality Lane**  
 Tampa, FL 33634

**SCOPE:**

This NOA is being issued under the applicable rules and regulations governing the use of construction materials. The documentation submitted has been reviewed and accepted by Miami-Dade County RER -Product Control Section to be used in Miami Dade County and other areas where allowed by the Authority Having Jurisdiction (AHJ).

This NOA shall not be valid after the expiration date stated below. The Miami-Dade County Product Control Section (In Miami Dade County) and/or the AHJ (in areas other than Miami Dade County) reserve the right to have this product or material tested for quality assurance purposes. If this product or material fails to perform in the accepted manner, the manufacturer will incur the expense of such testing and the AHJ may immediately revoke, modify, or suspend the use of such product or material within their jurisdiction. RER reserves the right to revoke this acceptance, if it is determined by Miami-Dade County Product Control Section that this product or material fails to meet the requirements of the applicable building code.

This product is approved as described herein and has been designed to comply with the Florida Building Code, including the High Velocity Hurricane Zone.

**DESCRIPTION:** Series "QQ2" 16 ga. Outswing Glazed Commercial Steel Door w/Panic Device & Mortise Lock -LMI

**APPROVAL DOCUMENT:** Drawing No. **QQ2 REV 6**, titled "16 ga Out swinging Glazed Commercial Steel Door", sheets 1 through 13 of 13, prepared by manufacturer, dated 02/26/16 and last revised on 01/31/24, signed and sealed by Cody Davis, P. E., bearing the Miami-Dade County Product Control Renewal stamp with the Notice of Acceptance number and expiration date by the Miami-Dade County Product Control Section.

**MISSILE IMPACT RATING: Large and Small Missile Impact Resistant**

**Limitations:**

1. See Design Pressure ratings (DP) VS lock types in sheet 1 thru 7. Max Single Door=+/- 90 PSF.
2. See anchor VS Door height VS DP in sheet 12.
3. Double Door w/HCF 9300 Rim with HC1300 removable mullion (sheet 7) is rated at +80/-65 PSF.
4. Doors are 16 ga (min .063" thk) with min CS Tensile yield strength  $F_y = 46.3$  ksi and Tensile ultimate strength  $F_u = 52.1$  Ksi and SS Tensile yield strength  $F_y = 50.5$  ksi and Tensile ultimate strength  $F_u = 98.5$  Ksi.
5. EPS Polystyrene by Dyplast (former Apache Products), having current NOA or Steel Ribs core or Honeycomb.

**LABELING:** Each unit shall bear a permanent label with the manufacturer's name or logo, city, state and series and following statement: "Miami-Dade County Product Control Approved", noted herein.

**RENEWAL** of this NOA shall be considered after a renewal application has been filed and there has been no change in the applicable building code negatively affecting the performance of this product.

**TERMINATION** of this NOA will occur after the expiration date or if there has been a revision or change in the materials, use, and/or manufacture of the product or process. Misuse of this NOA as an endorsement of any product, for sales, advertising or any other purposes shall automatically terminate this NOA. Failure to comply with any section of this NOA shall be cause for termination and removal of NOA.

**ADVERTISEMENT:** The NOA number preceded by the words Miami-Dade County, Florida, and followed by the expiration date may be displayed in advertising literature. If any portion of the NOA is displayed, then it shall be done in its entirety.

**INSPECTION:** A copy of this entire NOA shall be provided to the user by the manufacturer or its distributors and shall be available for inspection at the job site at the request of the Building Official.

This NOA **revises & renews NOA # 20-1123.18** and consists of this page 1 and evidence pages E-1, E-2, E-3, E-4 & E-5, as well as approval document mentioned above.

The submitted documentation was reviewed by **Ishaq I. Chanda, P.E.** *Ishaq I. Chanda*



**NOTICE OF ACCEPTANCE: EVIDENCE SUBMITTED**

**1. Evidence submitted under previous approvals**

**A. DRAWINGS**

1. Manufacturer's die drawings and sections (Submitted under files below)
2. Drawing No. **QQ2**, titled "16 ga Out swinging Glazed Commercial Steel Door", sheets 1 through 13 of 13, prepared by manufacturer, dated 02/26/16, with Revision 4 dated 02/26/16 signed and sealed by Cody Davis, P. E.

**B. TESTS (Submitted under file #12-1115.06/#07-1017.10/04-0823.04)**

1. Test reports on
  - 1) Air Infiltration Test, per FBC TAS 202-94
  - 2) Uniform Static Air Pressure Test, Loading per FBC, TAS 202.
  - 3) Water Resistance Test per FBC, TAS 202-94.
  - 4) Large Missile Impact Test per FBC, TAS 201-94
  - 5) Cyclic Wind Pressure Loading per FBC, TAS 203-94

Along with marked-up drawings & installation diagram of Commercial Steel Doors w /Panic devices, prepared by Certified Testing Laboratories Inc., Test Report No. **CTLA 1276W**, dated Nov. 11, 2004, signed and sealed by Ramesh Patel, P. E.

(Note: This test report has been revised under Test Report No. **CTLA 1276WR**, re-issued on Feb 01, 2005 by Certified Testing Laboratories, signed and sealed by Ramesh Patel, P. E.)

2. Test reports
  - 1) Air Infiltration Test, per FBC TAS 202-94
  - 2) Uniform Static Air Pressure Test, Loading per FBC, TAS 202.
  - 3) Water Resistance Test per FBC, TAS 202-94.
  - 4) Large Missile Impact Test per FBC, TAS 201-94
  - 5) Cyclic Wind Pressure Loading per FBC, TAS 203-94
  - 6) Forced Entry Test, per FBC and TAS 202-94

Along with marked-up drawings and installation diagram of Single Commercial Steel Doors, prepared by Certified Testing Lab Inc., Test Report No. **CTLA 1238W**, dated **08/13/04**, signed and sealed by Ramesh Patel, P. E.

Along with marked-up drawings and installation diagram of Single Commercial Steel Doors, prepared by Certified Testing Lab Inc., Test Report No. **CTLA 1238WR**, dated **08/25/04** and revised on 02/25/05, signed and sealed by Ramesh Patel, P. E

3. Test report on
  - 1) Uniform Static Air Pressure Test, Loading per FBC, TAS 202.
  - 2) Large Missile Impact Test per FBC, TAS 201-94
  - 3) Cyclic Wind Pressure Loading per FBC, TAS 203-94

Along with marked-up drawings and installation diagram of Commercial Steel Doors w/ panic Devices, prepared by Certified Testing Lab Inc., Test Report No. Test Report No. **CTLA 976WA-2R**, dated 07/12/04, and revised on 02/25/05 signed and sealed by Ramesh Patel, P. E.

4. Additional Test reports **HTL-0050-4007-96** and **HTL-0050-0104-96** tested per SFBC PA 201, 202 & 203-94, issued by Hurricane Testing lab, dated 04-17-96 and 01/15/96 both signed and sealed by Timothy S. Marshall, P.E. (submitted under files 00-0726.01/03-0708.02)

**C. CALCULATIONS**

1. Anchor verification calculations complying w/ FBC 2014 (5<sup>th</sup> Edition), dated 07/11/16, prepared, signed and sealed by Cody Davis, P.E.
2. Glazing complies w/ASTME-1300-02, -04. *Ishaq I. Chanda*

---

**Ishaq I. Chanda, P.E.**  
**Product Control Unit Supervisor**  
**NOA No. 23-1218.02**  
**Expiration Date: January 30, 2029**  
**Approval Date: April 25, 2024**

**NOTICE OF ACCEPTANCE: EVIDENCE SUBMITTED**

**D. QUALITY ASSURANCE**

- 1 Miami Dade Department of Regulatory and Economic Resources (RER)

**E. MATERIAL CERTIFICATIONS (Submitted under file # 07-1017.10/#04-0823.05)**

1. Tensile test report prepared by Certified Testing Laboratories Inc., Test Report No. **CTL 1023J (CTLA114W)**, tested per ASTM E-A370-97, dated December 02,2003, signed and sealed by Ramesh Patel, P. E.
2. Notice of Acceptance No. **11-0926.07** issued to Dyplastic Products, LLC (former Apache Products Co) for “EPS-Expanded Polystyrene Insulation”, expiring on 01/11/2017.
3. Notice of Acceptance No. **15-1201.11** issued to Eastman chemical Company (Former Solutia, Inc.) for their “Saflex clear & color Interlayer”, expiring on 05/21/2021.
4. Notice of Acceptance No.**14-0423.11** issued to Oldcastle Building Envelope, Inc. N.J. (Former Oldcastle, Inc.) for their “StormGlass Glass Interlayer”, expiring on 12/11/2018.

**F. STATEMENTS**

1. Statement letter of conformance, complying with FBC-2014 (5<sup>th</sup> edition), issued, prepared, signed, sealed and dated 07/11/16 by Cody Davis, P. E.
2. Statement letter dated 07/29/16 of successor engineer adopting as his own, another engineer’s work per FAC, Rule Chapter 61G15-27, issued by Master Consulting Engineers, Inc., both signed and sealed by Cody Davis, P. E.
3. Statement letter of compliance, as a part of the above referenced test reports.

**G. OTHER**

1. This **renews NOA # 13-0606.04**, expiring 07/11/18.
2. Previous associated files with this NOA(s) are # **07-1017.10, 04-0823.05 & # 02-1011.05**.
3. Test Proposal by Q. E. P. dated September 19, 2002, approved by BCCO.

**2. Evidence submitted under file #17-1102.03.**

**A. DRAWINGS**

1. Drawing No. **QQ2 REV 4**, titled “16 ga Out swinging Glazed Commercial Steel Door”, sheets 1 through 13 of 13, prepared by manufacturer, dated 02/26/16 and last revised on 02/26/16, signed and sealed by Cody Davis, P. E.

**B. Test**

1. None.

**C. CALCULATIONS**

1. None.

**D. QUALITY ASSURANCE**

1. Miami Dade Department of Regulatory and Economic Resources (RER).

**E. MATERIAL CERTIFICATIONS**

1. Notice of Acceptance No. **17-1207.05** issued to Dyplastic Products, LLC (former Apache Products Co) for “E& R-Board Expanded Polystyrene Rigid Foam Insulation”, expiring on 01/11/2022.

*Ishaq I. Chanda*

---

**Ishaq I. Chanda, P.E.**  
**Product Control Unit Supervisor**  
**NOA No. 23-1218.02**  
**Expiration Date: January 30, 2029**  
**Approval Date: April 25, 2024**

**NOTICE OF ACCEPTANCE: EVIDENCE SUBMITTED**

**F. STATEMENTS**

1. Statement letter of conformance to FBC 2017 (6<sup>th</sup> Edition), dated 12/01/17, prepared by Master Consulting Engineer Inc., signed and sealed by Cody Davis, P. E.
2. Statement later issued by Quality Engineered Prod., dated 02/02/18, requesting one year renewal, subjected to verification test completion per RER e-mail dated Jan 09, 2019, signed by A. Bernstein, V.P.

**G. OTHER**

1. This NOA conditionally **renews** for one year # **15-0422.04**, expiring 01/30/19, subjected to verification test (glazing/hardware), as laid out per RER e-mail dated JAN 09, 2018.

**3. Evidence submitted under previous approval**

**A. DRAWINGS**

1. Drawing No. **QQ2 REV 4**, titled “16 ga Out swinging Glazed Commercial Steel Door”, sheets 1 through 13 of 13, prepared by manufacturer, dated 02/26/16 and last revised on 04/30/19 signed and sealed by Cody Davis, P. E.

**B. TESTS**

1. Test reports on
  - 1) Uniform Static Air Pressure Test, Loading per FBC, TAS 202.
  - 2) Water Resistance Test per FBC, TAS 202-94.
  - 3) Large Missile Impact Test per FBC, TAS 201-94
  - 4) Cyclic Wind Pressure Loading per FBC, TAS 203-94

Along with marked-up drawings and installation diagram of glazed outswing Steel Commercial Steel Doors, prepared by Fenestration Testing Laboratories Inc., Test Report No. **FTLA 1435**, dated April 14, 2019, signed and sealed by Idalmis Ortega, P. E.

**C. CALCULATIONS**

1. None.

**D. QUALITY ASSURANCE**

1. Miami Dade Department of Regulatory and Economic Resources (RER).

**E. MATERIAL CERTIFICATIONS**

1. Notice of Acceptance No. **17-1207.05** issued to Dyplastic Products, LLC (former Apache Products Co) for “E& R-Board Expanded Polystyrene Rigid Foam Insulation”, expiring on 01/11/2022.
2. Notice of Acceptance No. **15-1201.11** issued to Eastman chemical Company (Former Solutia, Inc.) for their “Saflex clear & color Interlayer”, expiring on 05/21/2021.
3. Notice of Acceptance No. **18-0611.02** issued to Oldcastle Building Envelope, Inc. N.J. (Former Oldcastle, Inc.) for their “StormGlass Glass Interlayer”, expiring on 11/11/2025.

**F. STATEMENTS (Submitted under file #17-1102.03)**

1. Statement letter of conformance to FBC 2017 (6<sup>th</sup> Edition), dated 12/01/17, prepared by Master Consulting Engineer Inc., signed and sealed by Cody Davis, P. E.

**G. OTHER**

1. This NOA **revises & renews** NOA # **17-1102.03**, expiring 01/30/24.
2. RER e-mail test proposal dated Jan 09, 2018.

*Ishaq I. Chanda*

---

**Ishaq I. Chanda, P.E.**  
**Product Control Unit Supervisor**  
**NOA No. 23-1218.02**  
**Expiration Date: January 30, 2029**  
**Approval Date: April 25, 2024**

**NOTICE OF ACCEPTANCE: EVIDENCE SUBMITTED**

**4. Evidence submitted under previous approval**

**A. DRAWINGS**

1. Drawing No. **QQ2 REV 5**, titled “16 ga Out swinging Glazed Commercial Steel Door”, sheets 1 through 13 of 13, prepared by manufacturer, dated 02/26/16 and last revised on 03/03/21, signed and sealed by Cody Davis, P. E.

**B. TESTS**

1. None.

**C. CALCULATIONS**

1. None.

**D. QUALITY ASSURANCE**

1. Miami Dade Department of Regulatory and Economic Resources (RER).

**E. MATERIAL CERTIFICATIONS**

1. Notice of Acceptance No. **17-1207.05** issued to Dyplastic Products, LLC (former Apache Products Co) for “E& R-Board Expanded Polystyrene Rigid Foam Insulation”, expiring on 01/11/2022.
4. Notice of Acceptance No. **15-1201.11** issued to Eastman chemical Company (Former Solutia, Inc.) for their “Saflex clear & color Interlayer”, expiring on 05/21/2021.
5. Notice of Acceptance No. **18-0611.02** issued to Oldcastle Building Envelope, Inc. N.J. (Former Oldcastle, Inc.) for their “StormGlass Glass Interlayer”, expiring on 11/11/2025.

**F. STATEMENTS**

1. Statement letter of conformance to FBC 2020 (7<sup>th</sup> Edition), dated 03/03/21, prepared by Master Consulting Engineer Inc., signed and sealed by Cody Davis, P. E.

**G. OTHER**

1. This NOA revises NOA # **19-0507.04**, expiring 01/30/24.

*Ishaq I. Chanda*

---

**Ishaq I. Chanda, P.E.**  
**Product Control Unit Supervisor**  
**NOA No. 23-1218.02**  
**Expiration Date: January 30, 2029**  
**Approval Date: April 25, 2024**

**NOTICE OF ACCEPTANCE: EVIDENCE SUBMITTED**

**5. New Evidence submitted**

**A. DRAWINGS**

1. Drawing No. **QQ2 REV 6**, titled “16 ga Out swinging Glazed Commercial Steel Door”, sheets 1 through 13 of 13, prepared by manufacturer, dated 02/26/16 and last revised on 01/31/24, signed and sealed by Cody Davis, P. E.

**B. TESTS**

1. Test Report No. **FTLA 1435**, dated April 14, 2019.

**C. CALCULATIONS**

1. Anchor verification calculations prepared by Master Consulting Inc., dated 01/31/24, prepared, signed and sealed Cody Davis, P.E.

**D. QUALITY ASSURANCE**

1. Miami Dade Department of Regulatory and Economic Resources (RER).

**E. MATERIAL CERTIFICATIONS**

1. Notice of Acceptance No. **18-0611.02** issued to Oldcastle Building Envelope, Inc. N.J. (Former Oldcastle, Inc.) for their “Storm Glass Glass Interlayer”, expiring on 11/11/2025
2. Notice of Acceptance No. **23-0713.18** issued to Eastman chemical Company (Former Solutia, Inc.) for their “Saflex clear & color Interlayer”, expiring on 05/21/2026.
3. See bill of materials in sheet 7, for qualified cores.

**F. STATEMENTS**

1. Statement letter of conformance to FBC 2023 (8<sup>th</sup> Edition), dated 01/31/24, prepared by Master Consulting Engineer Inc., signed and sealed by Cody Davis, P. E
2. E-mail Statement explanation of “Threshold anchors in DWG change” dated APR 16, 2024, sent by Cody Davis, P. E.
3. Statement letter dated 01/31/24 request for Renewal with no change, issued by Quality Engineered Products, signed and sealed by Todd Albrecht, Engineering Dept.

**G. OTHER**

1. This NOA **renews NOA # 20-1123.18**, expiring 01/30/29.

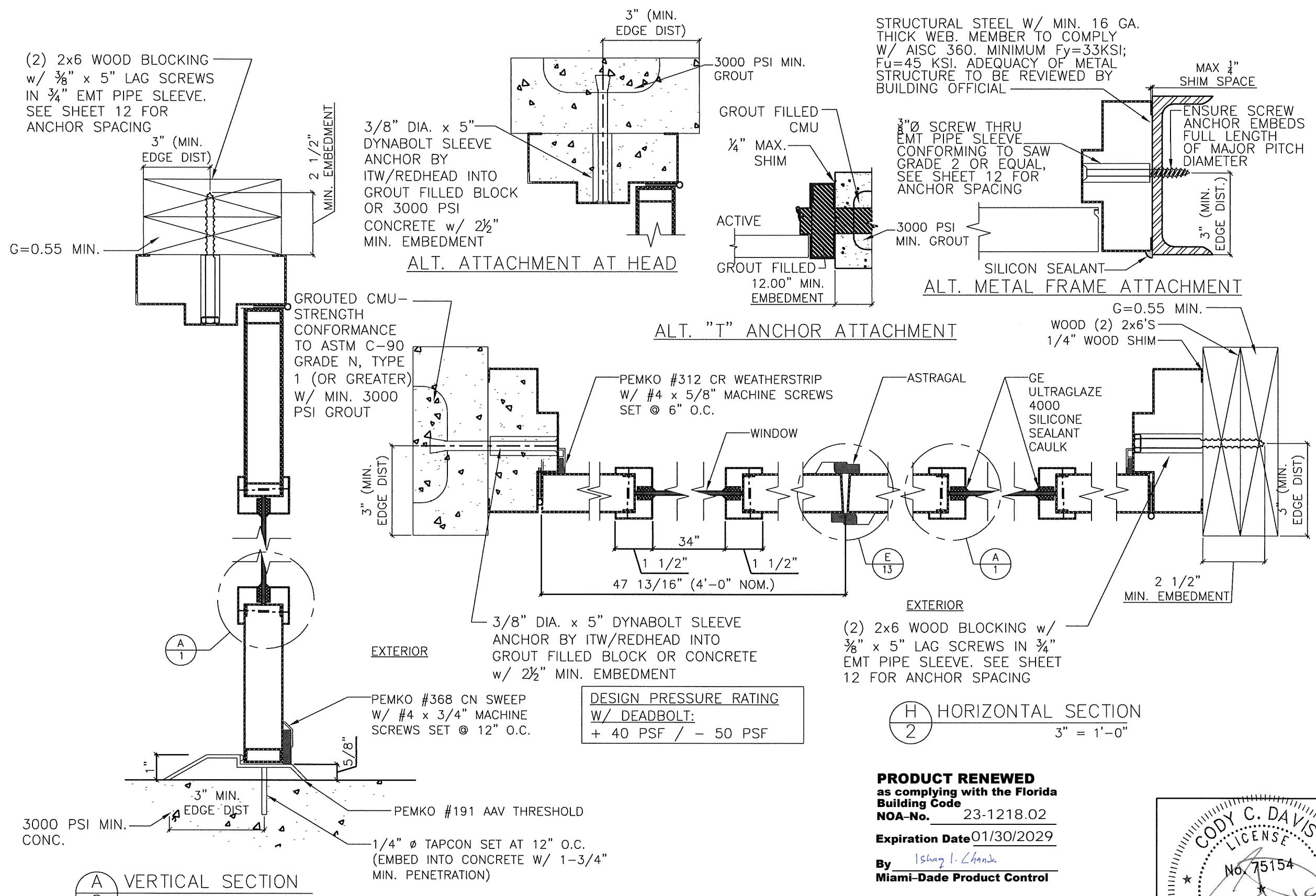
*Ishaq I. Chanda*

---

**Ishaq I. Chanda, P.E.**  
**Product Control Unit Supervisor**  
**NOA No. 23-1218.02**  
**Expiration Date: January 30, 2029**  
**Approval Date: April 25, 2024**







# GLAZED STEEL DOOR WITH DEADLOCK

DRAWING NUMBER **QQ2** 16 GA. OUTSWINGING GLAZED COMMERCIAL STEEL DOOR

4506 QUALITY LANE  
TAMPA, FLORIDA 33634  
(813) 885-1693

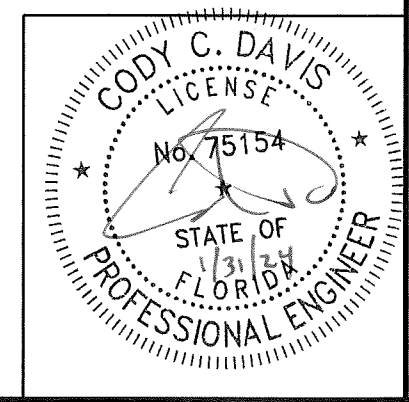
*Quality Engineered Products Co., Inc.*

REVISIONS

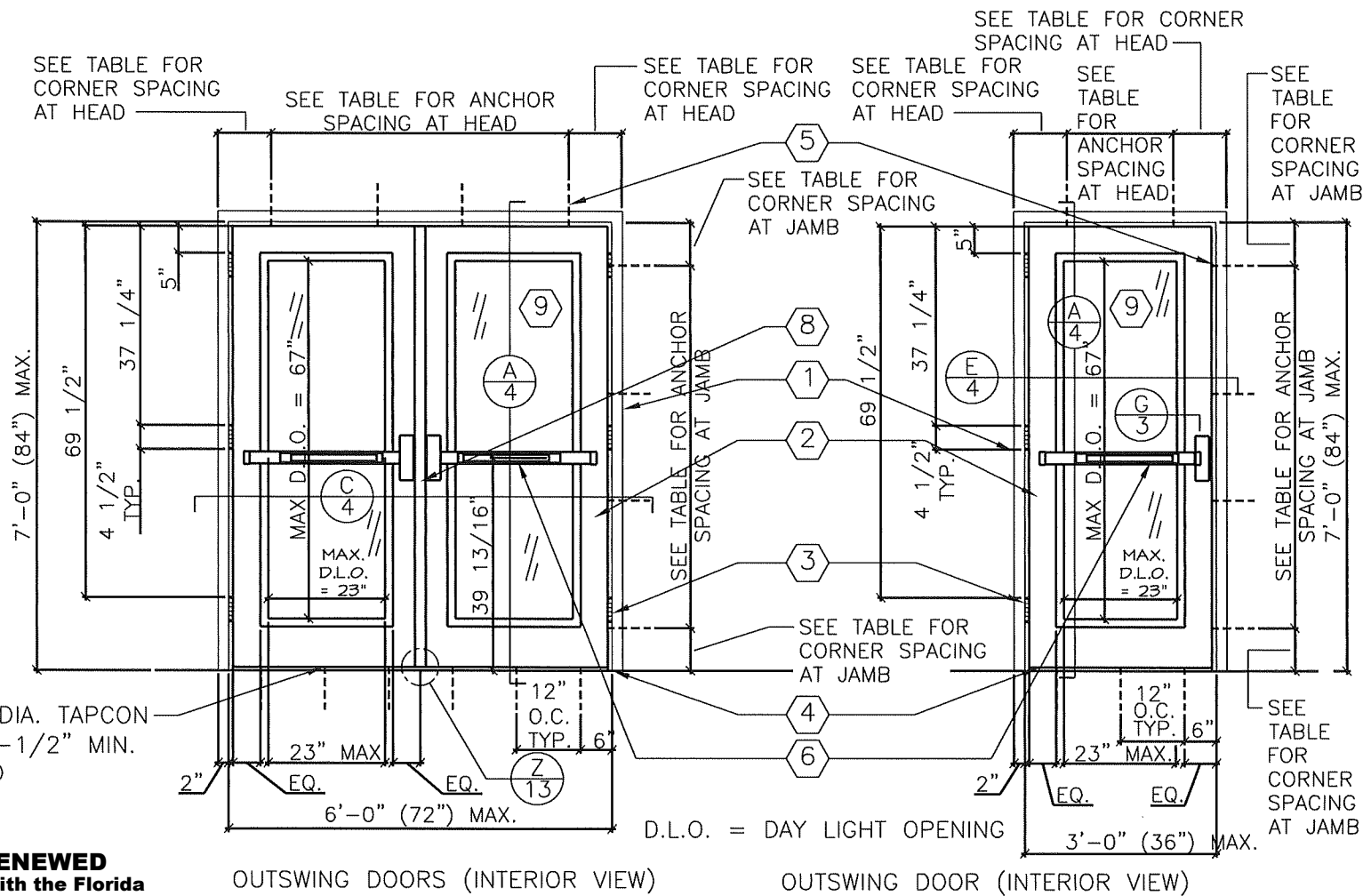
06-28-2000	
02-23-2005	
07-08-2008	
04-26-2019	
02-15-2021	(FBC2020)
01-31-2024	(FBC2023)

HURRICANE TEST APPROVAL  
QQ2

SHEET 2 OF 13  
DATE 01-31-2024

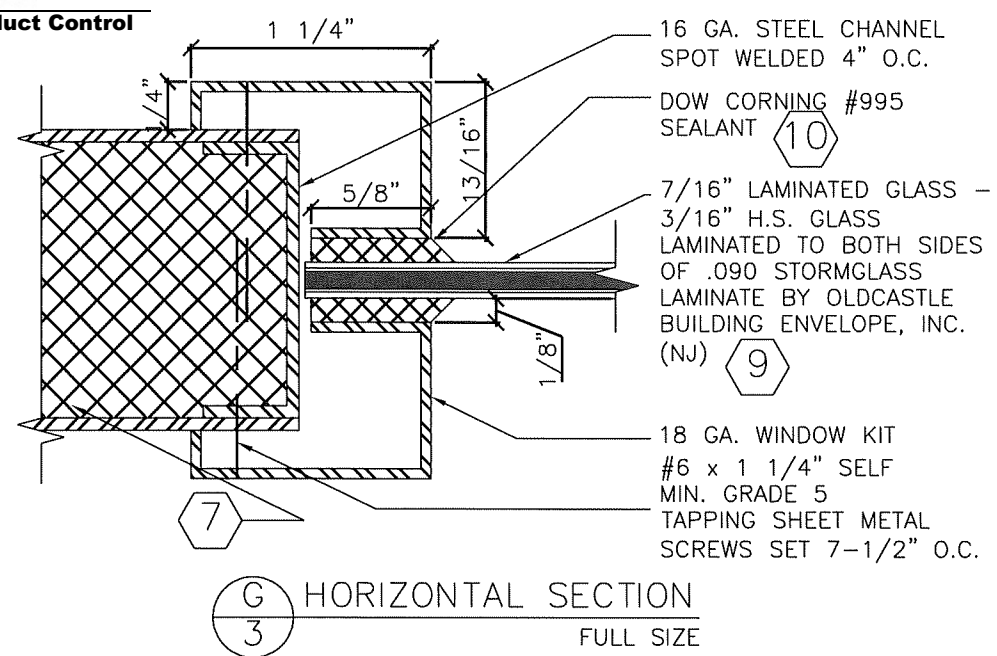






ITEM #	QUANTITY	BILL OF MATERIALS
1	1	16 GA. (.063") MIN. (14 GA. MAX.) STEEL HOLLOW METAL FRAME F <sub>y</sub> MIN= 46.3 KSI; F <sub>u</sub> MIN= 52.1 KSI (OR S.S. MEETING F <sub>y</sub> MIN= 50.5 KSI; F <sub>u</sub> MIN= 98.5 KSI)
2	2	16 GA. (.063") MIN. (14 GA. MAX.) GLAZED STEEL STORE F <sub>y</sub> MIN= 46.3 KSI; F <sub>u</sub> MIN= 52.1 KSI (OR S.S. MEETING F <sub>y</sub> MIN= 50.5 KSI; F <sub>u</sub> MIN= 98.5 KSI)
3	6	HAGAR HINGES BB1279 4 1/2" x 4 1/2" x 0.134" THICK
4	1	PEMKO 2005AV THRESHOLD
5	SEE ANCHOR TABLE	3/8" x 5" DYNABOLT SLEEVE ANCHOR BY ITW/REDHEAD w/ 3/4" EMT WELDED PIPE SLEEVE w/ 2-1/2" MIN. EMBED & 3" MIN. EDGE DISTANCE CONCRETE OR GROUT FILLED BLOCK
6	2	RIM EXIT DEVICE- PRECISION FL2100/ PRECISION 2100/ SARGENT HC8800/ VON DURPIN 98/99/ CORBIN RUSWIN ED5200
7	AS REQ.	EPS POLYSTYRENE FOAM CORE BY DYNAPLAST OR 20 GA. STEEL RIB OR HONEYCOMB
8	1	PRECISION FL822 REMOVABLE MULLION
9	AS REQ.	7/16" LAMINATED GLASS (3/16" HS + 0.090" STORMGLASS INTERLAYER BY OLDCASTLE + 3/16" HS) BY OLDCASTLE BUILDING ENVELOPE, INC. (NJ)
10	AS REQ.	PRECISION CORNING #995 STRUCTURAL SILICONE SEALANT

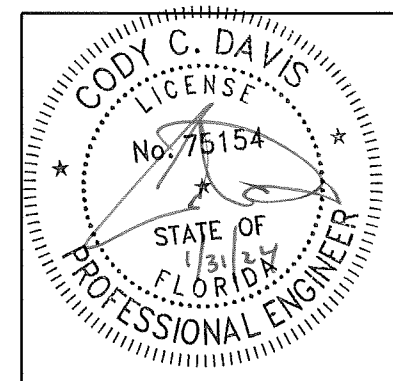
**PRODUCT RENEWED**  
 as complying with the Florida Building Code  
 NOA-No. 23-1218.02  
 Expiration Date 01/30/2029  
 By Ishay I. Chandra  
 Miami-Dade Product Control



DESIGN PRESSURE RATING VS. EXIT DEVICE PART #6 & PRECISION REMOVABLE MULLION FL822	POSITIVE	NEGATIVE
SPEC #1 - PRECISION FL2100 RIM EXIT DEVICE OR	+65 PSF *	-65 PSF
SPEC #2 - PRECISION 2100 RIM EXIT DEVICE OR	+65 PSF *	-65 PSF
SPEC #3 - SARGENT RIM EXIT DEVICE HC8800 OR	+70 PSF *	-70 PSF
SPEC #4 - VON DUPRIN RIM EXIT DEVICE 98/99 OR	+70 PSF *	-70 PSF
SPEC #5 - CORBIN RUSWIN RIM EXIT DEVICE ED5200	+65 PSF *	-65 PSF

\* = NOT RATED WHERE WATER INFILTRATION IS NEEDED.

GLAZED STEEL DOOR WITH RIM EXIT DEVICE AND REMOVABLE MULLION



DRAWING NUMBER QQ2

16 GA. OUTSWINGING GLAZED COMMERCIAL STEEL DOOR

HURRICANE TEST APPROVAL QQ2

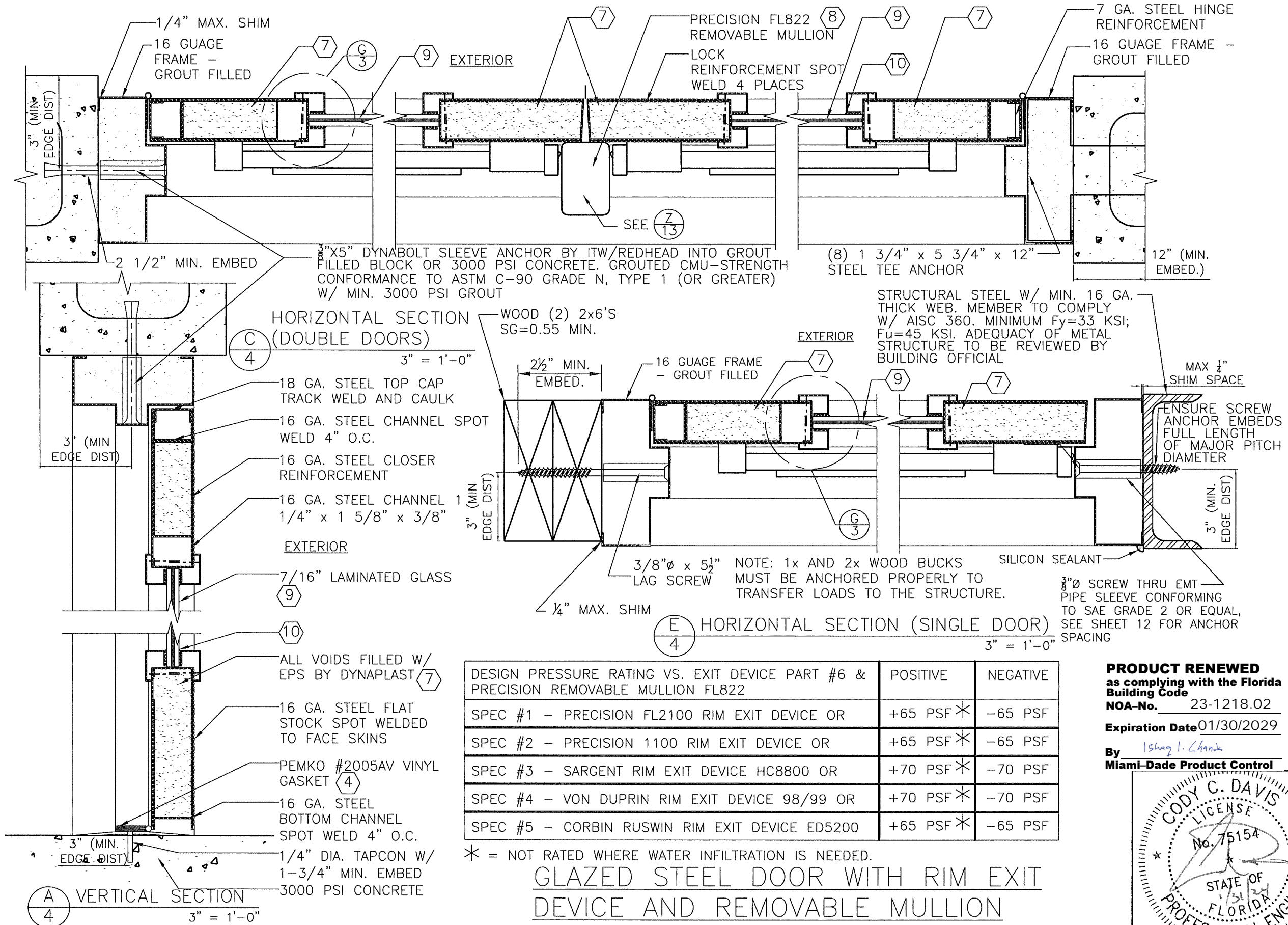
SHEET 3 OF 13

DATE 01-31-2024

4506 QUALITY LANE  
 TAMPA, FLORIDA 33634  
 (813) 885-1693

*Quality Engineered Products Co., Inc.*

REVISIONS  
 06-28-2000  
 02-23-2005  
 07-08-2008  
 04-26-2019  
 02-15-2021(FBC2020)  
 01-31-2024(FBC2023)



16 GA. OUTSWINGING GLAZED COMMERCIAL STEEL DOOR

DRAWING NUMBER QQ2

4506 QUALITY LANE  
 TAMPA, FLORIDA 33634  
 (813) 885-1693

Quality Engineered Products Co., Inc.

REVISIONS

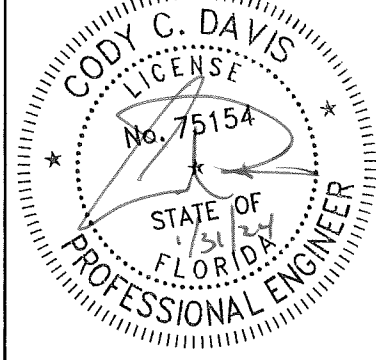
06-28-2000
02-23-2005
07-08-2008
04-26-2019
02-15-2021(FBC2020)
01-31-2024(FBC2023)

HURRICANE TEST APPROVAL  
 QQ2

SHEET 4 OF 13

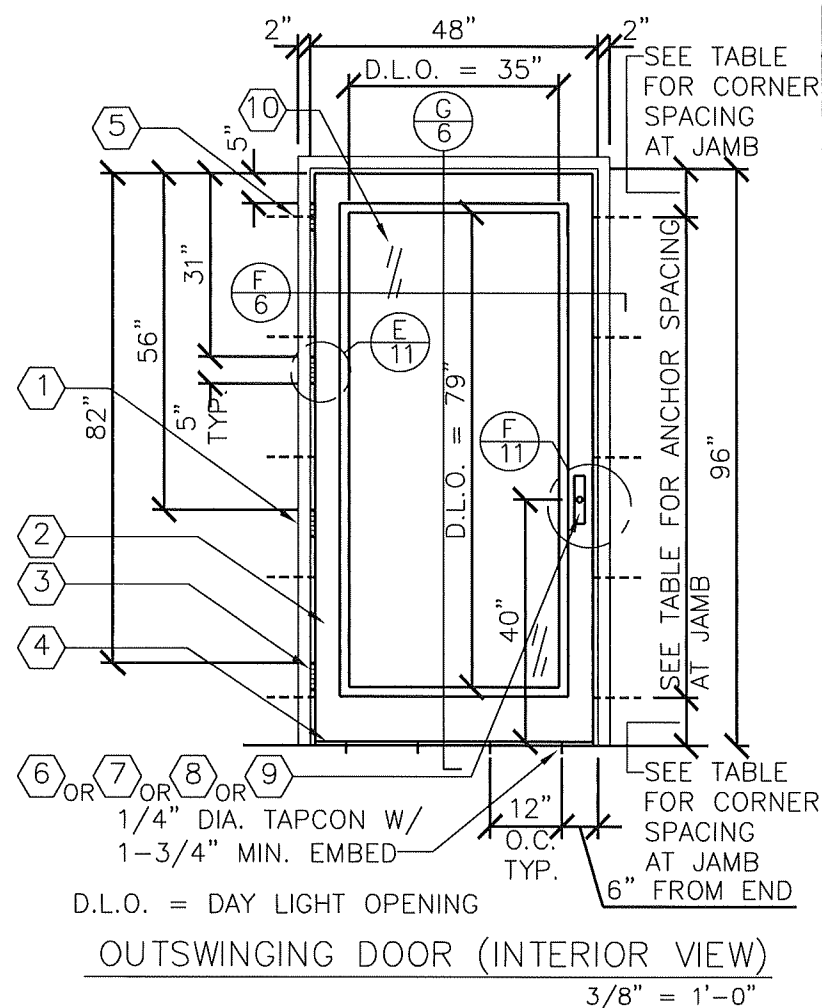
DATE 01-31-2024

**PRODUCT RENEWED**  
 as complying with the Florida Building Code  
 NOA-No. 23-1218.02  
 Expiration Date 01/30/2029  
 By Ishag I. Chande  
 Miami-Dade Product Control



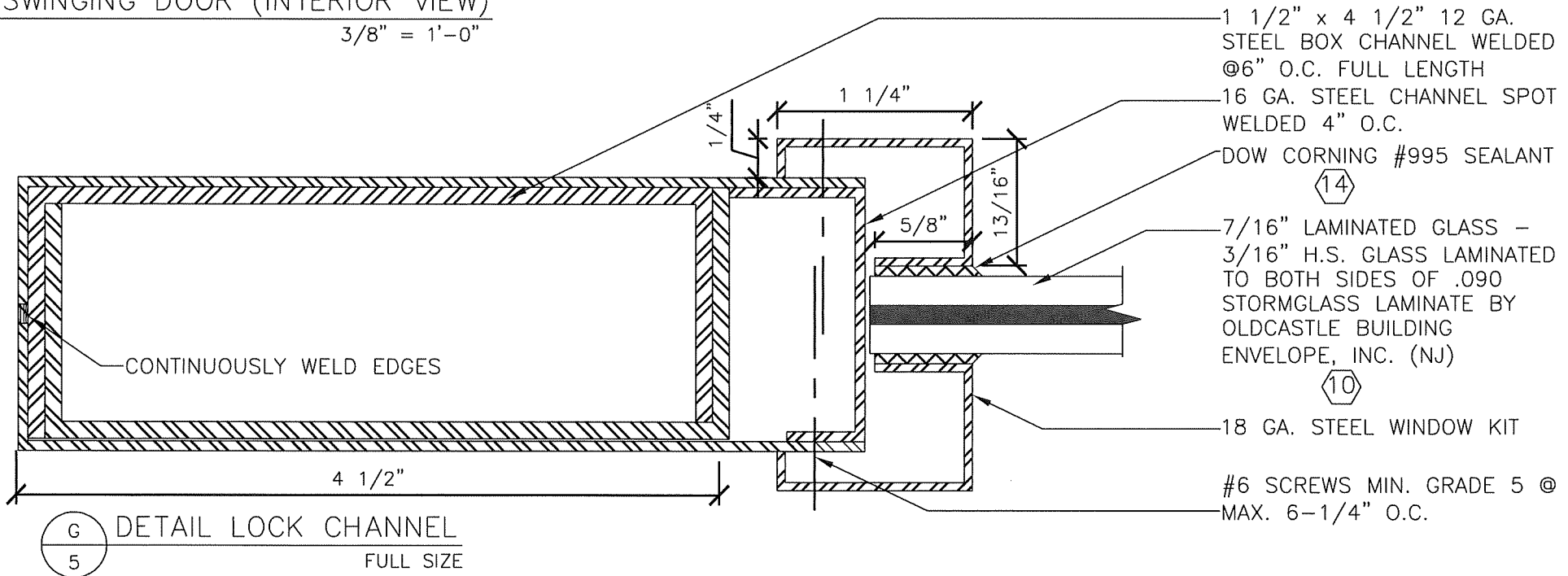


# GLAZED STEEL DOOR WITH MORTISE LOCK

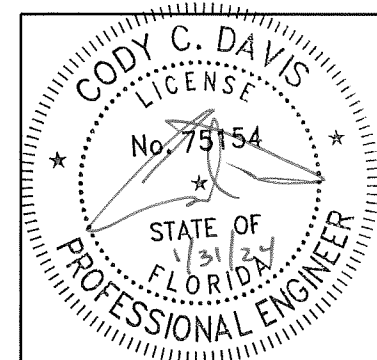


ITEM #	QUANTITY	BILL OF MATERIALS
1	1	16 GA. (.063") MIN. (14 GA. MAX.) STEEL HOLLOW METAL FRAME F <sub>y</sub> MIN= 46.3 KSI; F <sub>u</sub> MIN= 52.1 KSI (OR S.S. MEETING F <sub>y</sub> MIN= 50.5 KSI; F <sub>u</sub> MIN= 98.5 KSI)
2	1	16 GA. (.063") MIN. (14 GA. MAX.) GLAZED STEEL STORE F <sub>y</sub> MIN= 46.3 KSI; F <sub>u</sub> MIN= 52.1 KSI (OR S.S. MEETING F <sub>y</sub> MIN= 50.5 KSI; F <sub>u</sub> MIN= 98.5 KSI)
3	4	HAGAR HINGES BB1279 4.5 x 4.5 .134" THICK
4	1	PEMCO 2005AV THRESHOLD
5	SEE ANCHOR TABLE	3/8" x 5" DYNABOLT SLEEVE ANCHOR BY ITW/REDHEAD w/2-1/2" MIN. EMBED & 3" MIN. EDGE DIST. INTO 3 KSI CONCRETE OR GROUT FILLED BLOCK
6	1	CORBIN RUSWIN MI2200 MORTISE LOCK
7	1	DORMA ML9953 MORTISE LOCK
8	1	SCHLAGE L9456 MORTISE LOCK
9	1	SARGENT 8243 MORTISE LOCK
10	1	7/16" HS LAMINATED GLASS BY OLDCASTLE BUILDING ENVELOPE, INC. (NJ)
11	1	PEMCO 347A TOP DRIP
12	2	PEMCO 68A DOOR TOP WEATHERSTRIP
13	3	PEMCO 303AS WEATHERSTRIP
14	AS REQ'D	DOW CORNING #995 STRUCTURAL SILICONE SEALANT

DESIGN PRESSURE RATING SINGLE DOOR W/ MORTISE LOCK (ITEM #6, 7, 8, & 9)		
	WHERE AIR & WATER INFILTRATION REQUIREMENT IS NEEDED	WHERE AIR & WATER INFILTRATION REQUIREMENT IS <u>NOT</u> NEEDED
POSITIVE	+90 PSF	+90 PSF
NEGATIVE	-90 PSF	-90 PSF



**PRODUCT RENEWED**  
as complying with the Florida Building Code  
NOA-No. 23-1218.02  
Expiration Date 01/30/2029  
By Ismael I. Chanda  
Miami-Dade Product Control



**Quality Engineered Products Co., Inc.**

4506 QUALITY LANE  
TAMPA, FLORIDA 33634  
(813) 885-1693

REVISIONS

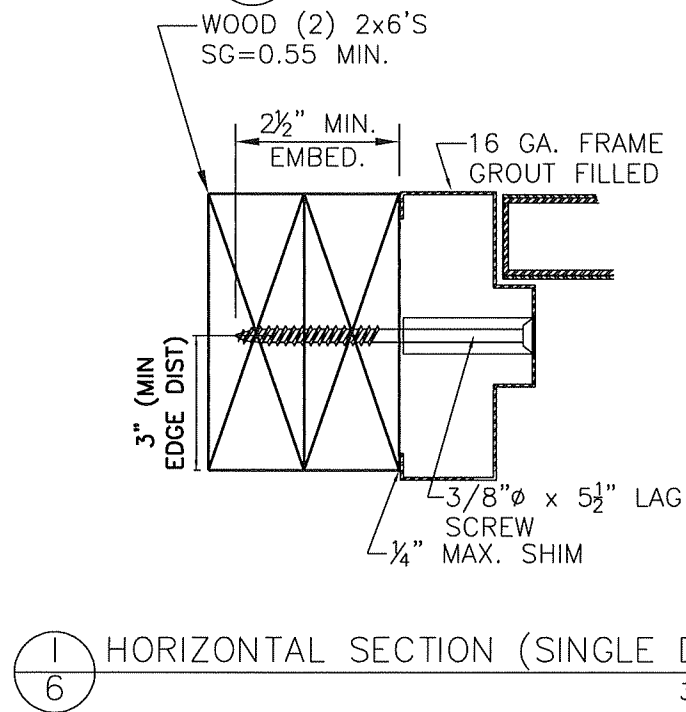
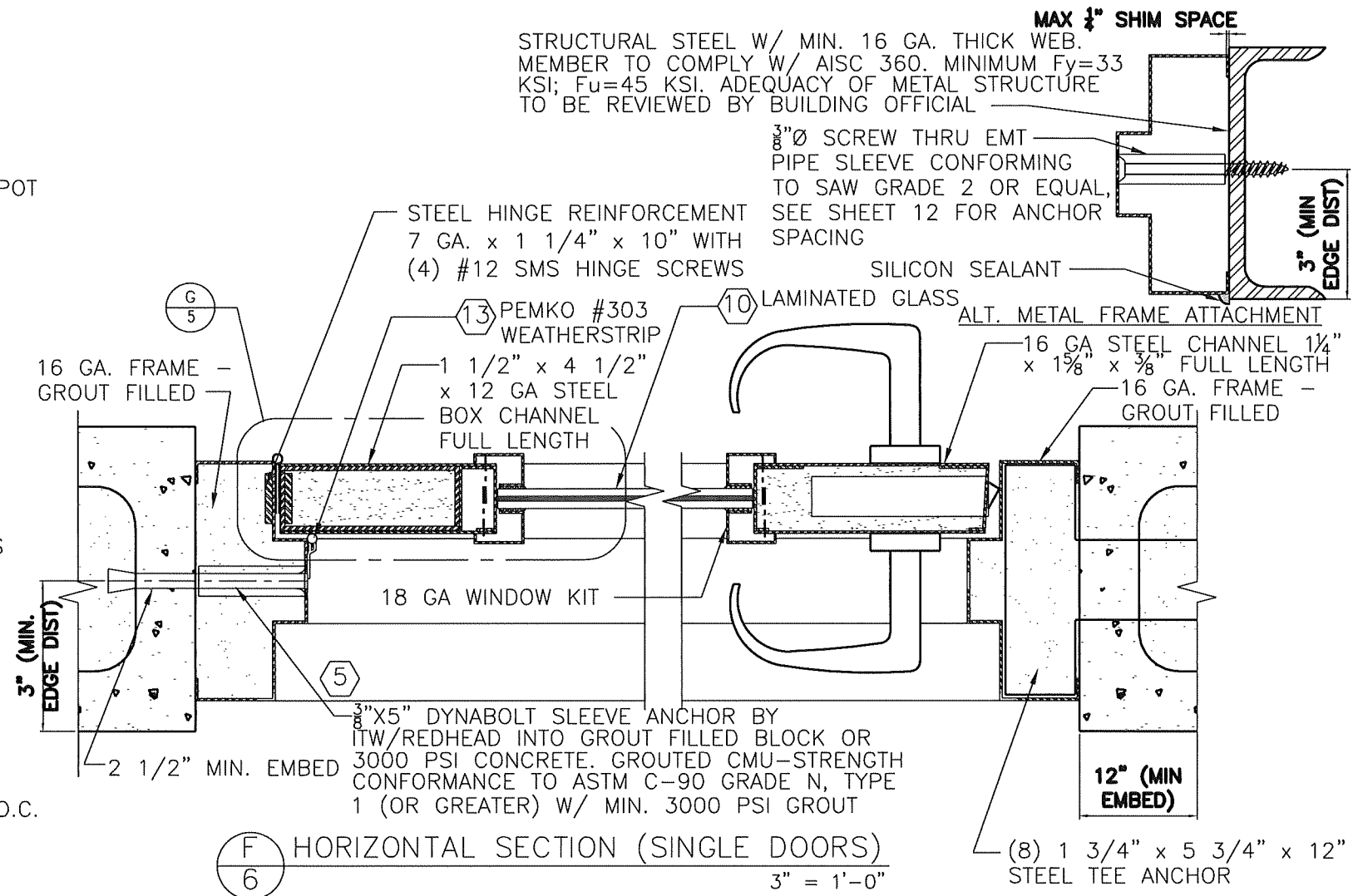
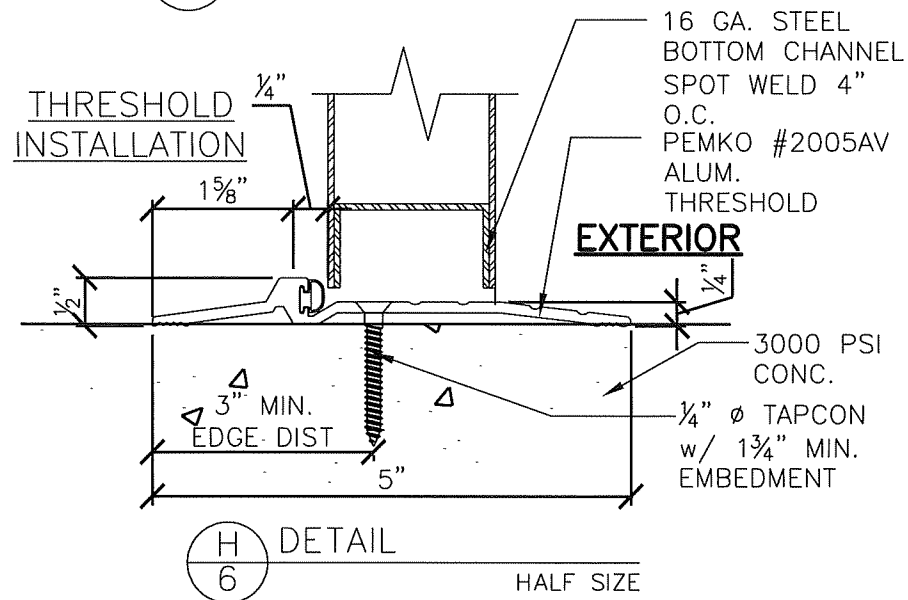
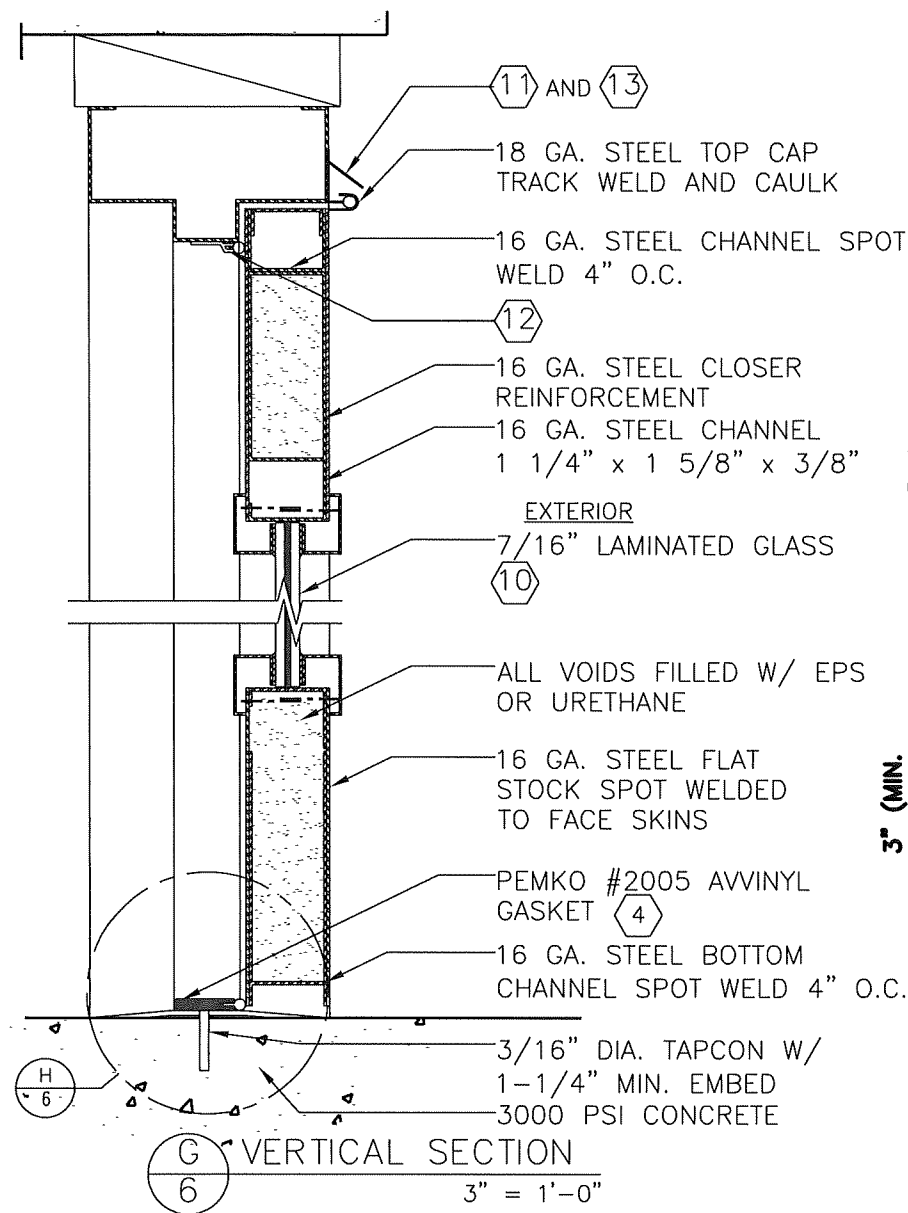
06-28-2000	01-31-2024(FBC2023)
02-23-2005	02-15-2021(FBC2020)
07-08-2008	04-26-2019
04-26-2019	

DRAWING NUMBER **QQ2**

HURRICANE TEST APPROVAL  
QQ2

SHEET 5 OF 13

DATE 01-31-2024

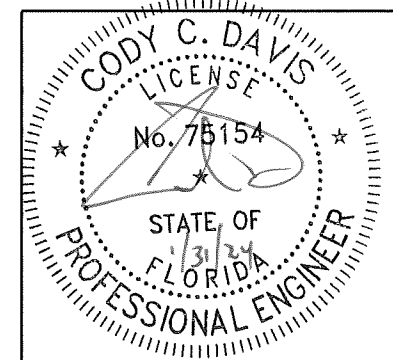


**DESIGN PRESSURE RATING SINGLE DOOR W/ MORTISE LOCK (ITEM #6, 7, 8, & 9)**

	WHERE AIR & WATER INFILTRATION REQUIREMENT IS NEEDED	WHERE AIR & WATER INFILTRATION REQUIREMENT IS <u>NOT</u> NEEDED
POSITIVE	+90 PSF	+90 PSF
NEGATIVE	-90 PSF	-90 PSF

NOTE: 1x AND 2x WOOD BUCKS MUST BE ANCHORED PROPERLY TO TRANSFER LOADS TO THE STRUCTURE.

**PRODUCT RENEWED**  
as complying with the Florida Building Code  
NOA-No. 23-1218.02  
Expiration Date 01/30/2029  
By *Ishaq I. Chand*  
Miami-Dade Product Control



DRAWING NUMBER QQ2

16 GA. OUTSWINGING GLAZED COMMERCIAL STEEL DOOR

REVISIONS

06-28-2000
02-23-2005
07-08-2008
04-26-2019
02-15-2021(FBC2020)
01-31-2024(FBC2023)

HURRICANE TEST APPROVAL  
QQ2

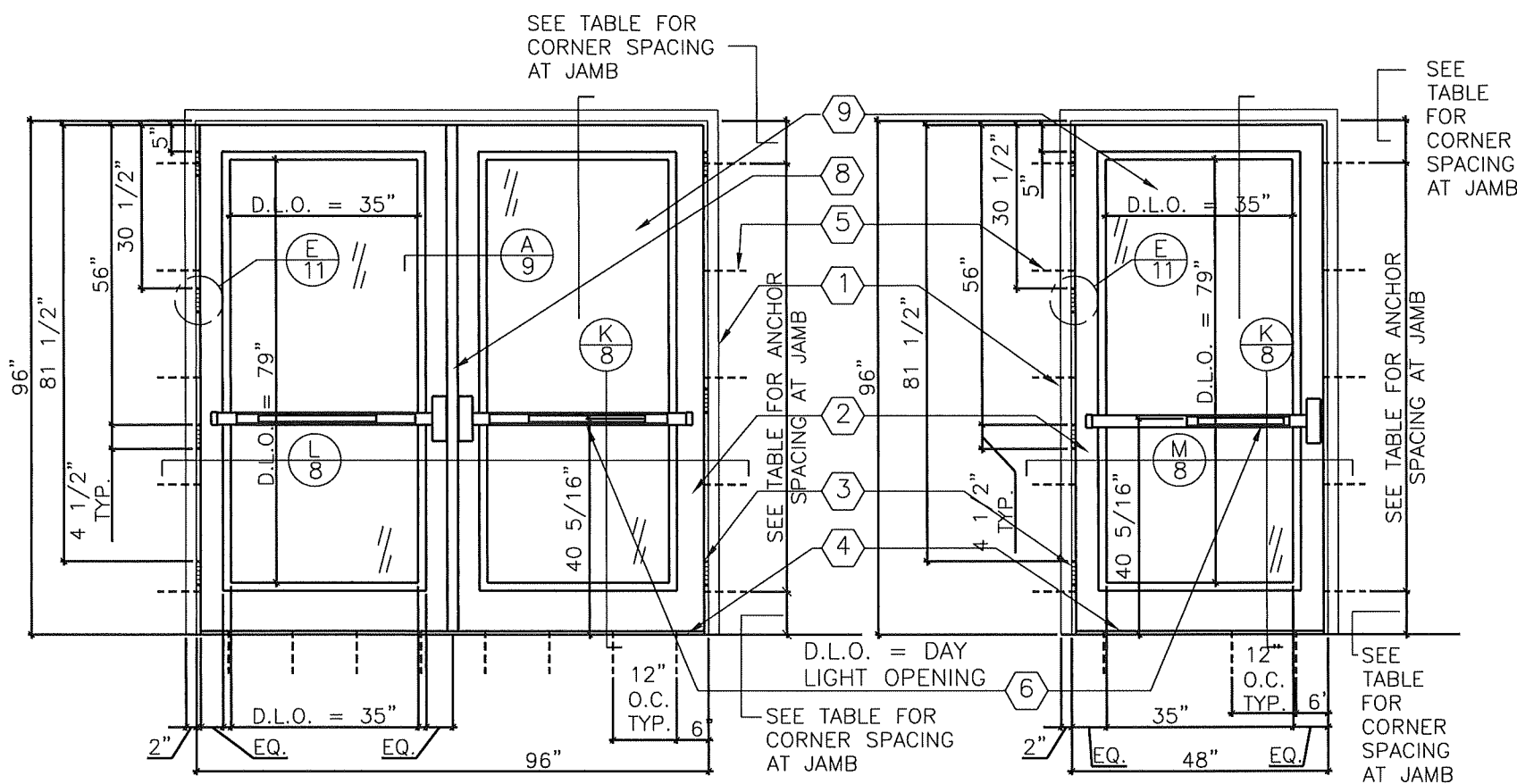
SHEET 6 OF 13

DATE 01-31-2024

4506 QUALITY LANE  
TAMPA, FLORIDA 33634  
(813) 885-1693

*Quality Engineered Products Co., Inc.*





OUTSWINGING PAIR OF DOORS (INTERIOR VIEW)

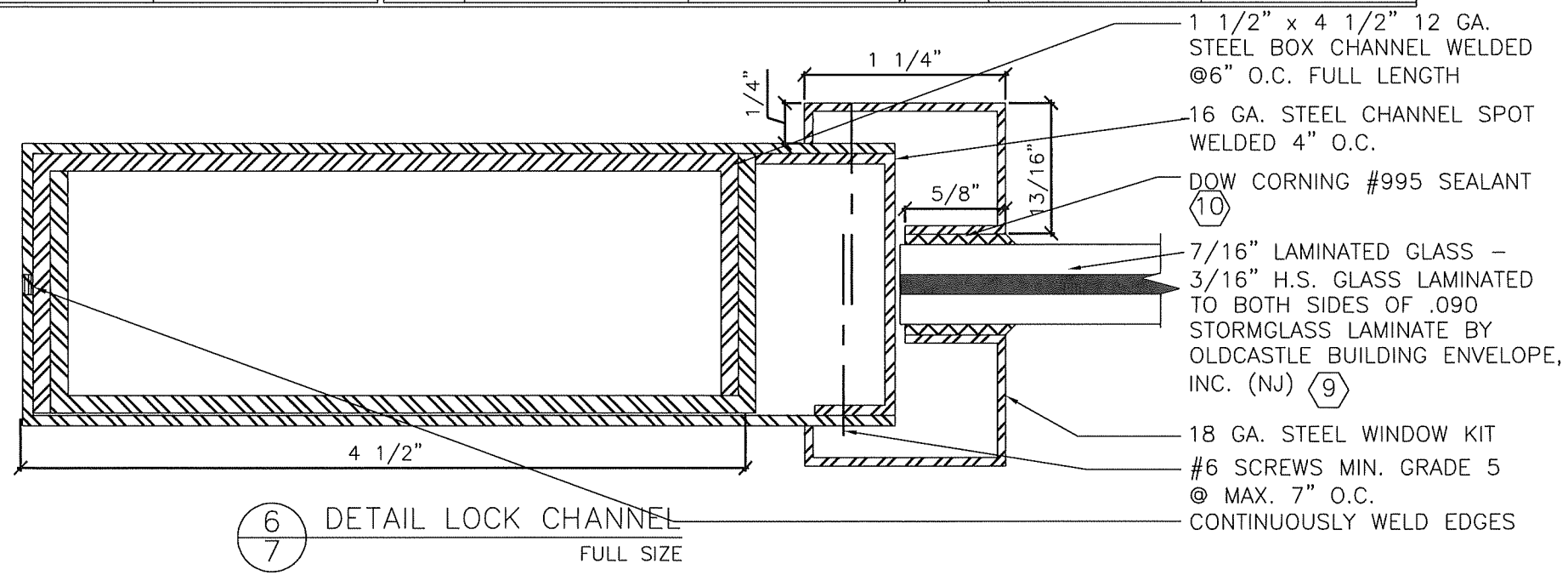
OUTSWINGING SINGLE DOOR (INTERIOR VIEW)

DESIGN PRESSURE RATING DORMA RIM EXIT 9300 W/ REMOVABLE MULLION HC1300			DESIGN PRESSURE RATING DORMA HCF9400 VERTICLE ROD EXIT DEVICE			DESIGN PRESSURE RATING SINGLE DOOR WITH DORMA RIM EXIT 9300		
	WHERE AIR & WATER INFILTRATION REQUIREMENT IS NEEDED	WHERE AIR & WATER INFILTRATION REQUIREMENT IS NOT NEEDED		WHERE AIR & WATER INFILTRATION REQUIREMENT IS NEEDED	WHERE AIR & WATER INFILTRATION REQUIREMENT IS NOT NEEDED		WHERE AIR & WATER INFILTRATION REQUIREMENT IS NEEDED	WHERE AIR & WATER INFILTRATION REQUIREMENT IS NOT NEEDED
POSITIVE	+80 PSF	+80 PSF	POSITIVE	+80 PSF	+80 PSF	POSITIVE	+80 PSF	+80 PSF
NEGATIVE	-65 PSF	-65 PSF	NEGATIVE	-80 PSF	-80 PSF	NEGATIVE	-80 PSF	-80 PSF

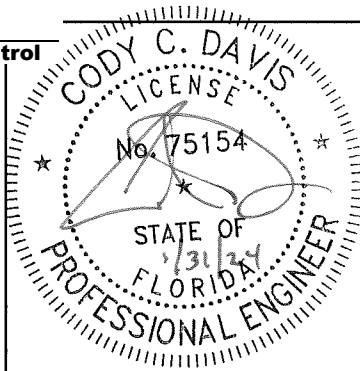
ITEM #	QUANTITY	BILL OF MATERIALS
1	1	16 GA. (.063") MIN. (14 GA. MAX.) STEEL HOLLOW METAL FRAME FyMIN= 46.3 KSI; FuMIN= 52.1 KSI (OR S.S. MEETING FyMIN= 50.5 KSI; FuMIN= 98.5 KSI)
2	2	16 GA. (.063") MIN. (14 GA. MAX.) GLAZED STEEL STORE FyMIN= 46.3 KSI; FuMIN= 52.1 KSI (OR S.S. MEETING FyMIN= 50.5 KSI; FuMIN= 98.5 KSI)
3	8	HAGAR HINGES 4.5 x 4.5 BB1279 .134" THICK
4	1	PEMCO 2005AV THRESHOLD
5	10	3/8" X 5" DYNABOLT SLEEVE ANCHOR BY ITW/REDHEAD w/ 3/4" EMT WELDED PIPE SLEEVE w/ 2-1/2" MIN. EMBED & 3" MIN. EDGE DISTANCE CONCRETE OR GROUT FILLED BLOCK
6	2	DORMA VERTICAL ROD EXIT DEVICE HCF9400 OR HCF9300 X YR08
7	AS REQ'D	EPS POLYSTYRENE FOAM CORE BY DYNOPLAST OR 20 GA. STEEL RIB OR HONEYCOMB
8	1	DORMA HC1300 REMOVABLE MULLION (DOUBLE DOORS) (NOT REQ. FOR VERTICAL ROD)
9	AS REQ'D	7/16" LAMINATED GLASS (3/16" HS + .090" INTERLAYER BY OLDCASTLE BUILDING ENVELOPE, INC. (NJ)
10	AS REQ'D	DOW CORNING #995 STRUCTURAL SILICONE SEALANT
11	2	PEMCO 68A DOOR TOP WEATHERSTRIP
12	3	NATIONAL GUARD #130SA WEATHERSTRIP
13	1	PEMCO 347A TOP DRIP

PAIR GLAZED STEEL DOORS  
W/DORMA VERTICAL ROD EXIT DEVICES OR RIM EXIT DEVICES W/REMOVABLE MULLION

SINGLE GLAZED DOOR  
W/RIM EXIT DEVICE



**PRODUCT RENEWED**  
as complying with the Florida Building Code  
NOA-No. 23-1218.02  
Expiration Date 01/30/2029  
By *Ishag I. Chank*  
Miami-Dade Product Control



16 GA. OUTSWINGING GLAZED COMMERCIAL STEEL DOOR

4506 QUALITY LANE  
TAMPA, FLORIDA 33634  
(813) 885-1693

*Quality Engineered Products Co., Inc.*

- REVISIONS
- 06-28-2000
  - 02-23-2005
  - 07-08-2008
  - 04-26-2019
  - 02-15-2021(FBC2020)
  - 01-31-2024(FBC2023)

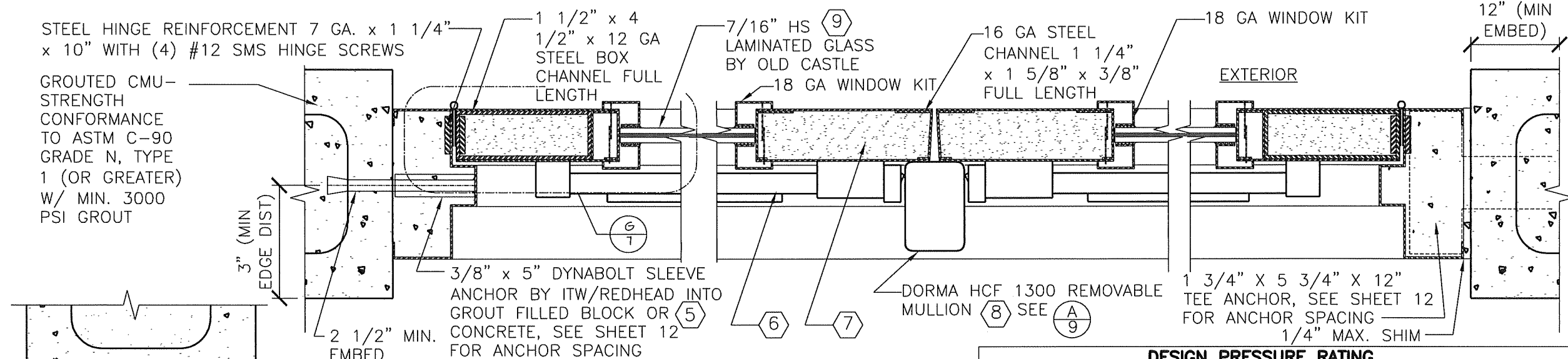
DRAWING NUMBER QQ2

HURRICANE TEST APPROVAL  
QQ2

SHEET 7 OF 13

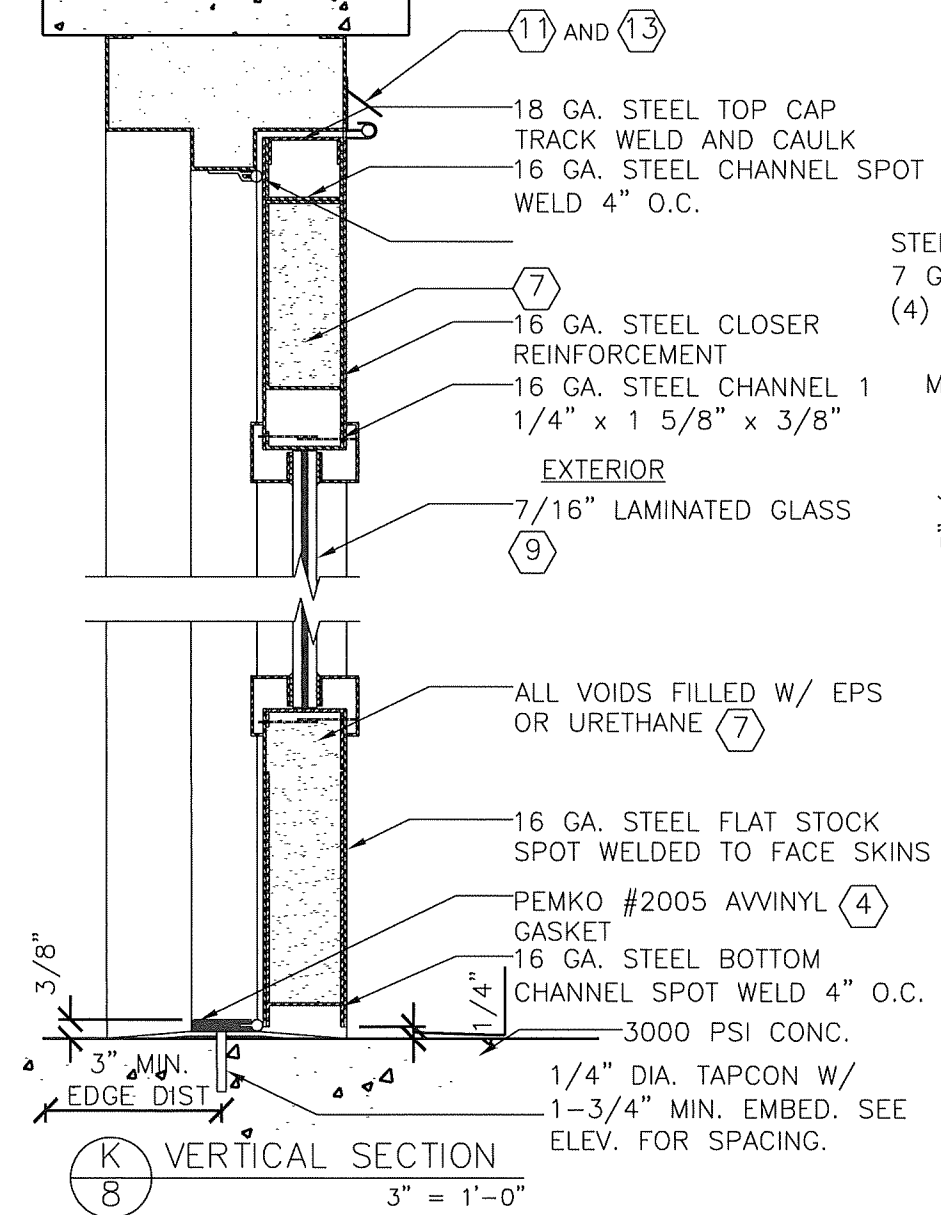
DATE 01-31-2024



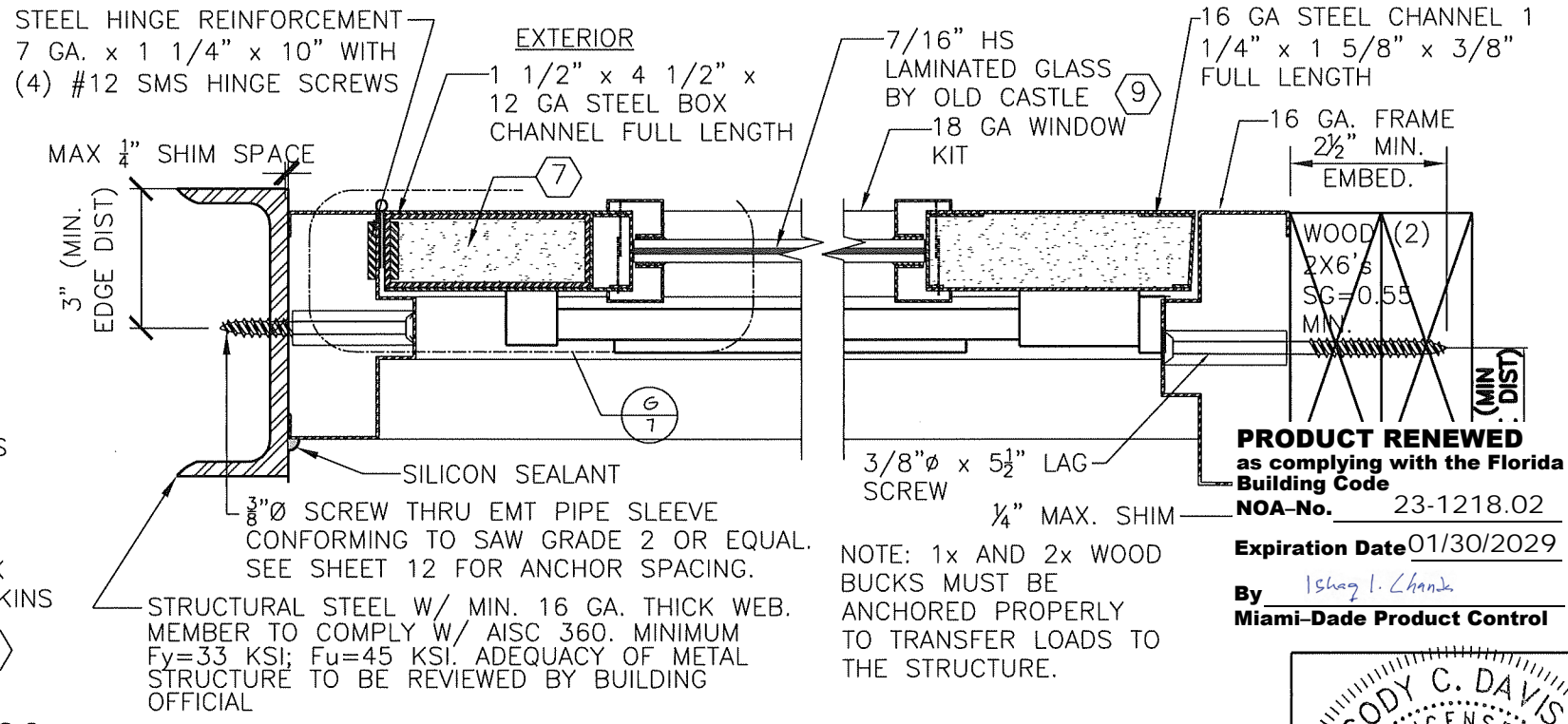


(L) HORIZONTAL SECTION (DOUBLE DOOR)  
3" = 1'-0"

DESIGN PRESSURE RATING DORMA RIM EXIT WITH DORMA 1300 REMOVABLE MULLION		
	WHERE AIR & WATER INFILTRATION REQUIREMENT IS NEEDED	WHERE AIR & WATER INFILTRATION REQUIREMENT IS NOT NEEDED
POSITIVE	+80 PSF	+80 PSF
NEGATIVE	-65 PSF	-65 PSF



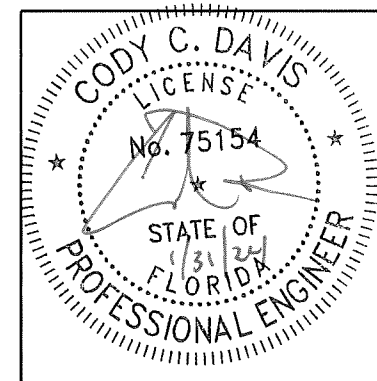
(K) VERTICAL SECTION  
3" = 1'-0"



(M) HORIZONTAL SECTION (SINGLE DOOR)  
3" = 1'-0"

GLAZED STEEL DOOR WITH "DORMA" RIM EXIT DEVICE & REMOVABLE MULLION

**PRODUCT RENEWED**  
as complying with the Florida Building Code  
NOA-No. 23-1218.02  
Expiration Date 01/30/2029  
By Ishaq I. Chand  
Miami-Dade Product Control



DRAWING NUMBER QQ2

16 GA. OUTSWINGING GLAZED COMMERCIAL STEEL DOOR

4506 QUALITY LANE  
TAMPA, FLORIDA 33634  
(813) 885-1693

*Quality Engineered Products Co., Inc.*

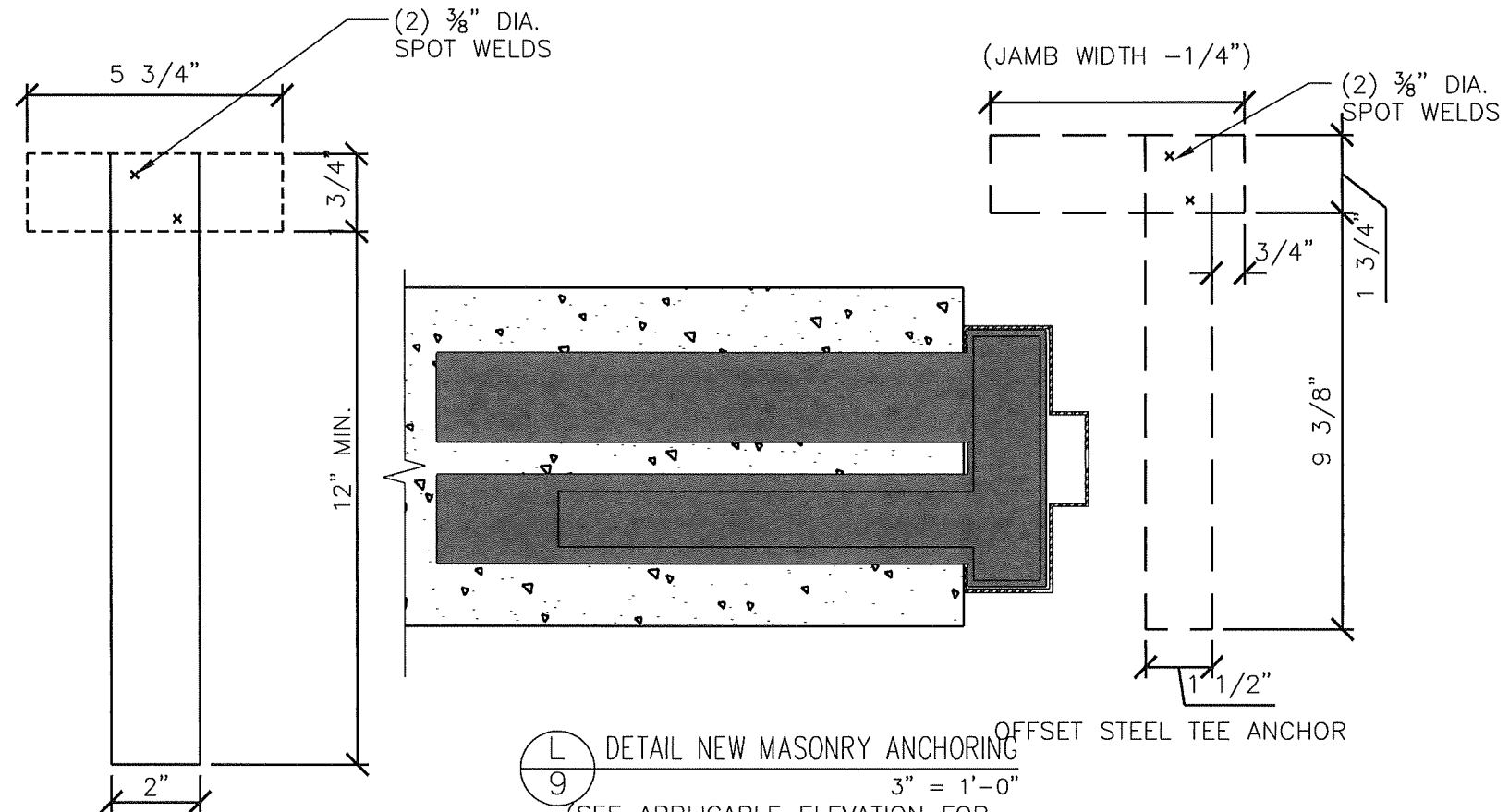
REVISIONS

06-28-2000	
02-23-2005	
07-08-2008	
04-26-2019	
02-15-2021	(FBC2020)
01-31-2024	(FBC2023)

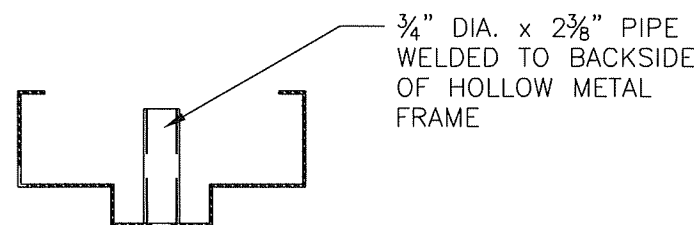
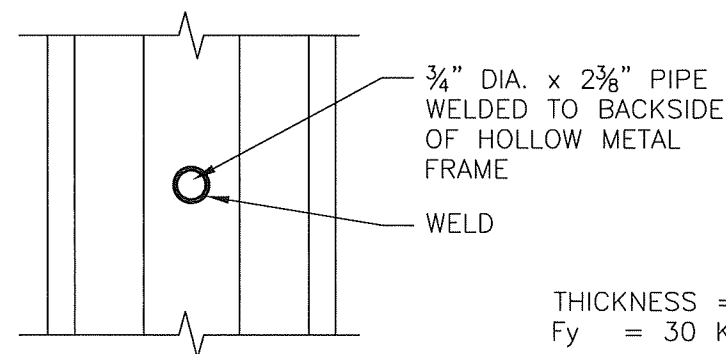
HURRICANE TEST APPROVAL  
QQ2

SHEET 8 OF 13

DATE 01-31-2024



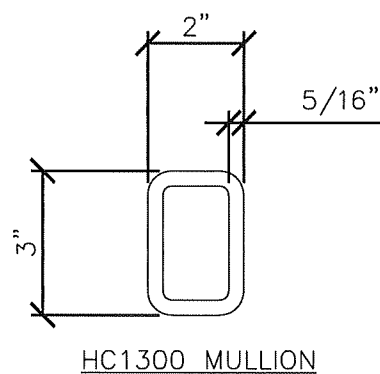
**L** 9 DETAIL NEW MASONRY ANCHORING  
 3" = 1'-0"  
 (SEE APPLICABLE ELEVATION FOR NUMBER OF 'T' ANCHORS REQUIRED)



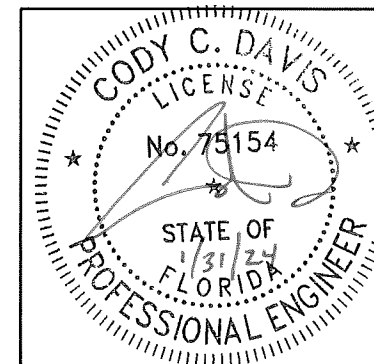
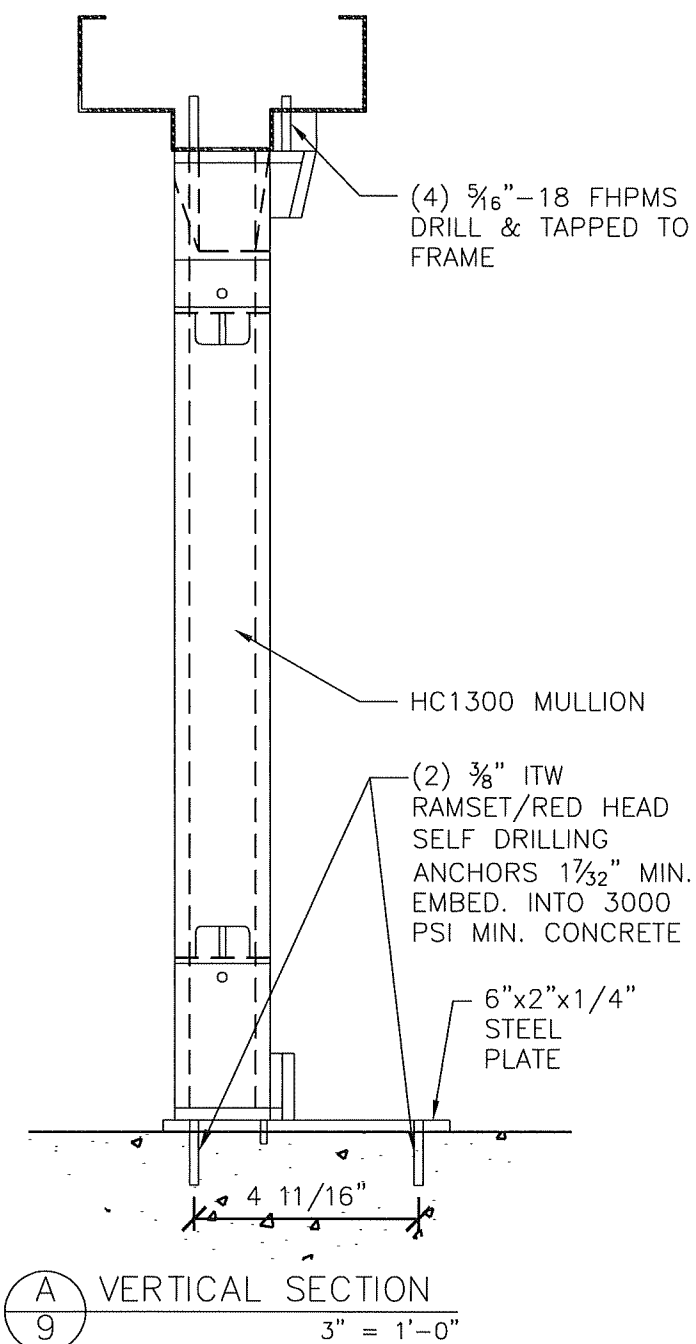
**M** 9 PIPE SLEEVE DETAIL  
 3" = 1'-0"

'T' ANCHOR DETAILS

**PRODUCT RENEWED**  
 as complying with the Florida Building Code  
 NOA-No. 23-1218.02  
 Expiration Date 01/30/2029  
 By *Ishaq I. Chand*  
 Miami-Dade Product Control

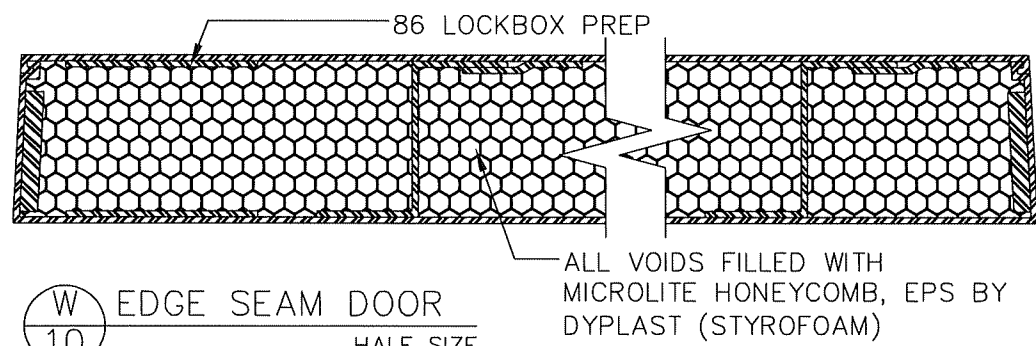
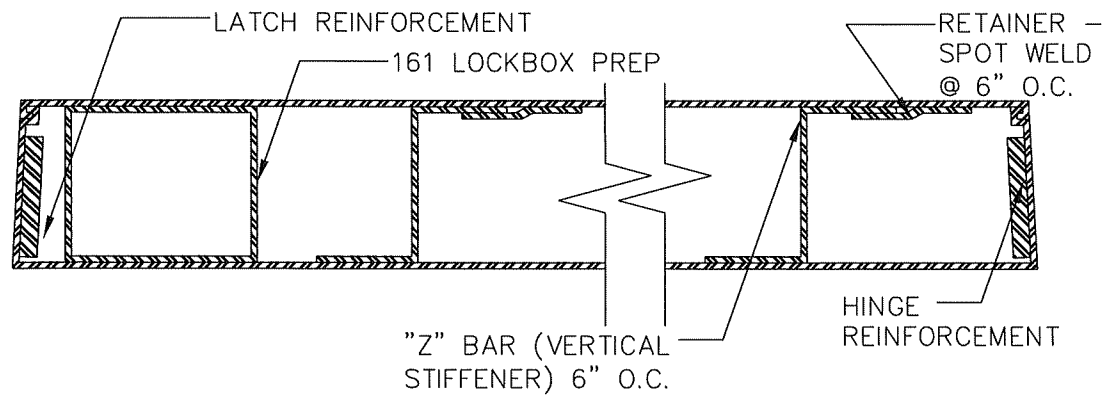


DORMA HC-1300  
REMOVABLE MULLION

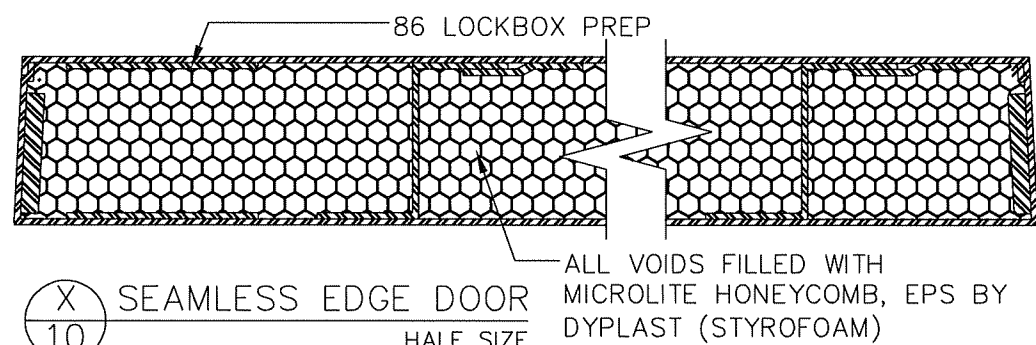
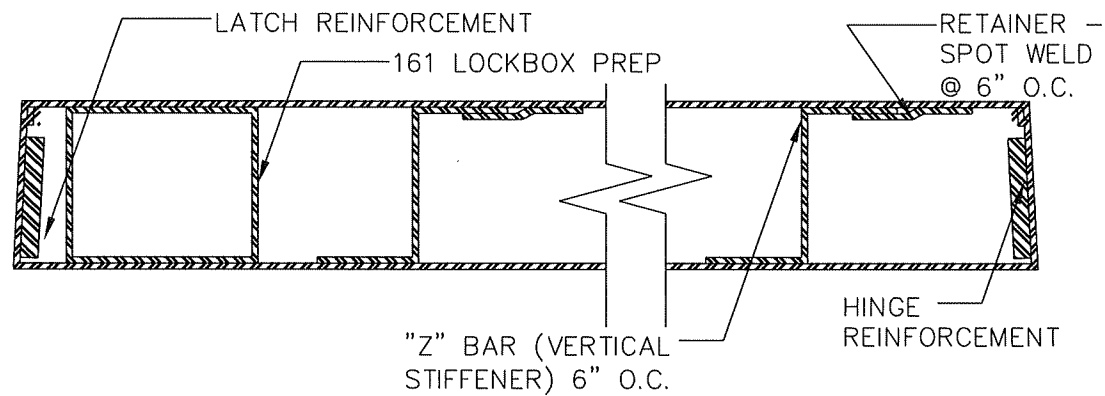


DRAWING NUMBER	QQ2	16 GA. OUTSWINGING GLAZED COMMERCIAL STEEL DOOR
	HURRICANE TEST APPROVAL QQ2	REVISIONS
	SHEET 9 OF 13	06-28-2000 02-23-2005 07-08-2008 04-26-2019 02-15-2021(FBC2020) 01-31-2024(FBC2023)
DATE	01-31-2024	4506 QUALITY LANE TAMPA, FLORIDA 33634 (813) 885-1693 <b>Quality Engineered Products Co., Inc.</b>



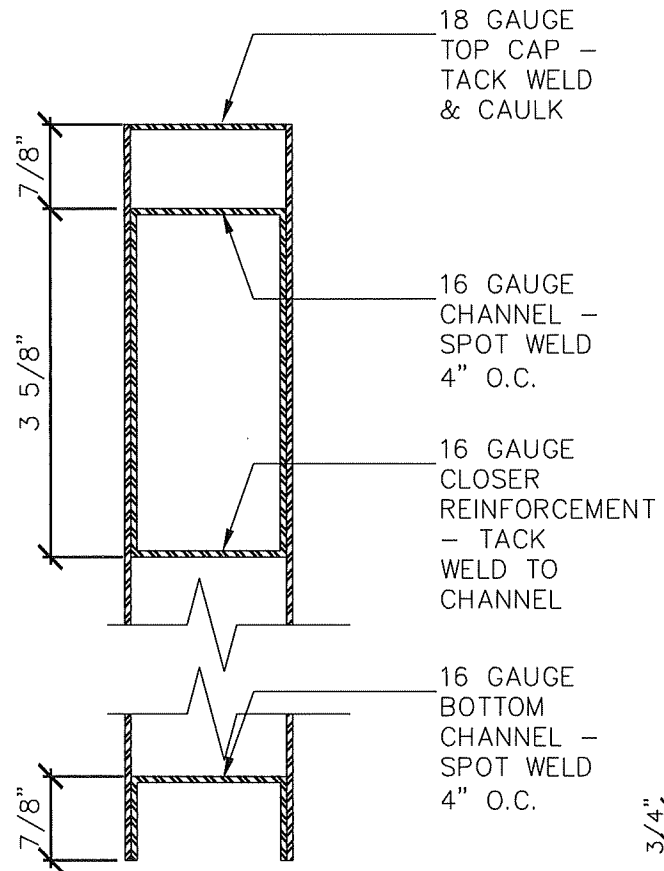


W  
10  
EDGE SEAM DOOR  
HALF SIZE



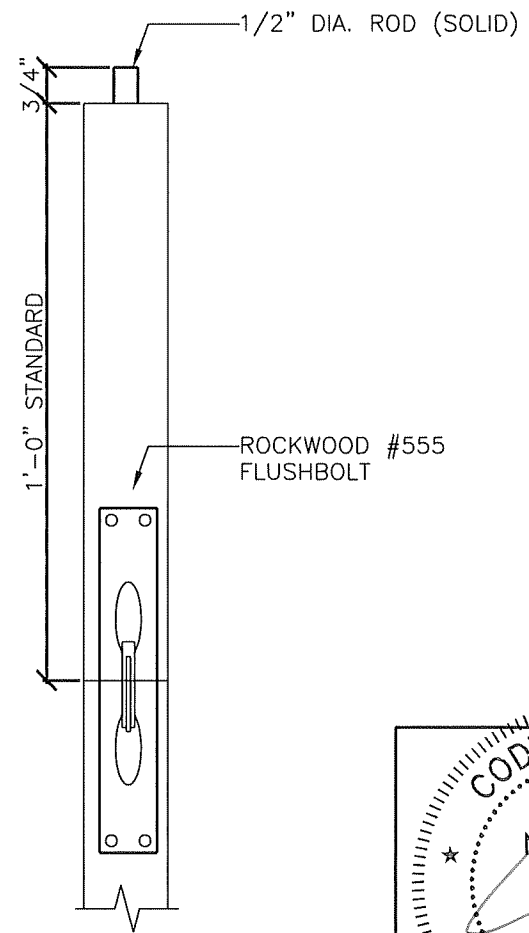
X  
10  
SEAMLESS EDGE DOOR  
HALF SIZE

DOOR PANEL CONSTRUCTION DETAILS

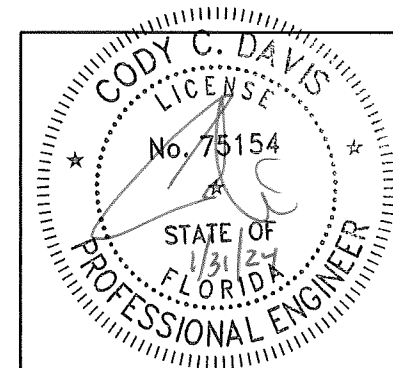


Y  
10  
VERTICAL DOOR SECTION  
HALF SIZE

**PRODUCT RENEWED**  
as complying with the Florida  
Building Code  
NOA-No. 23-1218.02  
Expiration Date 01/30/2029  
By Ishaq I. Chank  
Miami-Dade Product Control



Z  
10  
DETAIL  
3" = 1'-0"



4506 QUALITY LANE  
TAMPA, FLORIDA 33634  
(813) 885-1693

*Quality  
Engineered  
Products Co., Inc.*

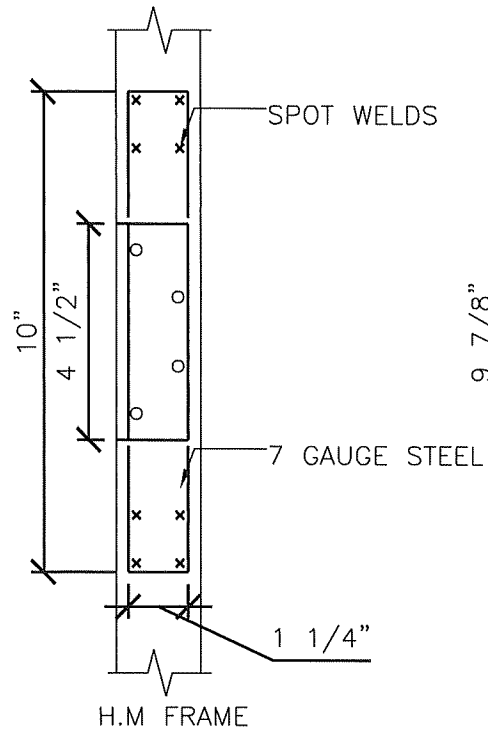
REVISIONS
06-28-2000
02-23-2005
07-08-2008
04-26-2019
02-15-2021(FBC2020)
01-31-2024(FBC2023)

DRAWING NUMBER QQ2

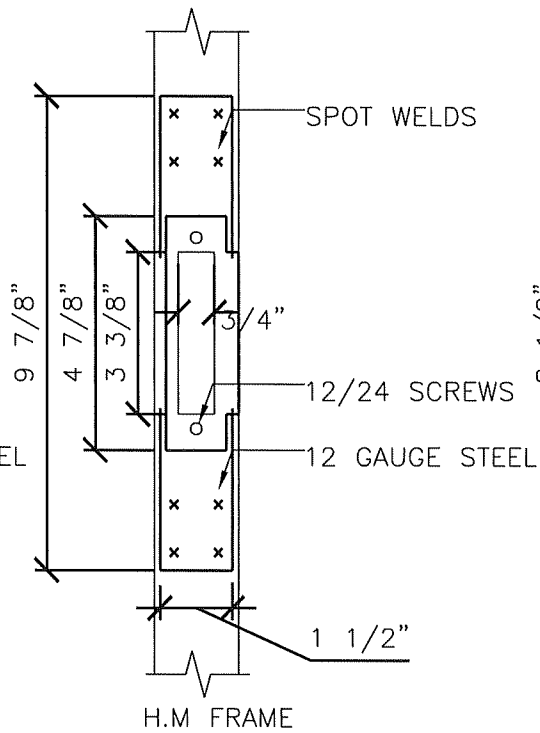
HURRICANE TEST APPROVAL  
QQ2

SHEET 10 OF 13

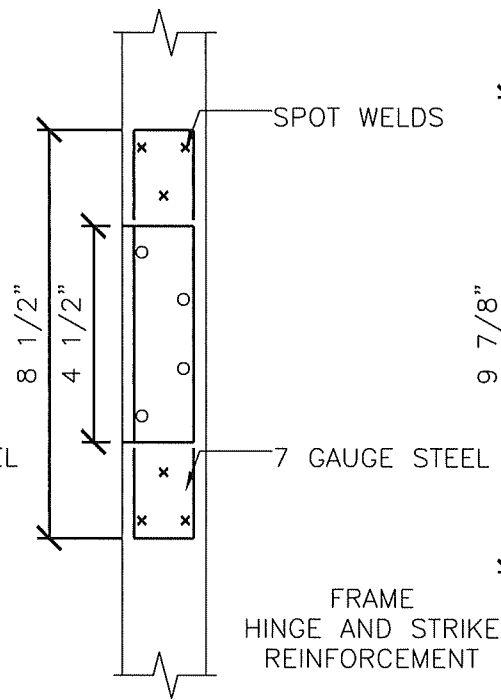
DATE 01-31-2024



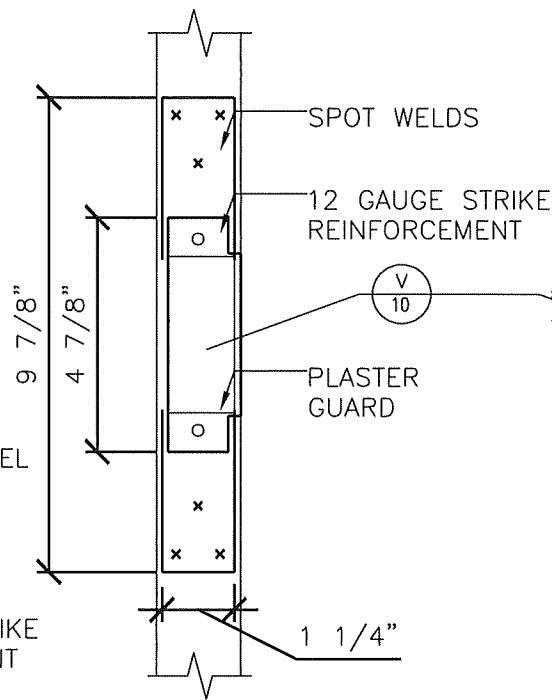
**E**  
11  
DETAIL HINGE REINFORCEMENT  
3" = 1'-0"



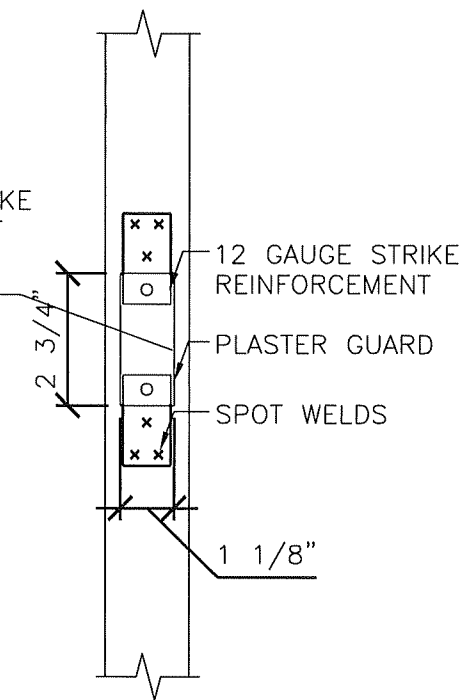
**F**  
11  
DETAIL STRIKE REINFORCEMENT  
3" = 1'-0"



**N**  
11  
DETAIL  
3" = 1'-0"



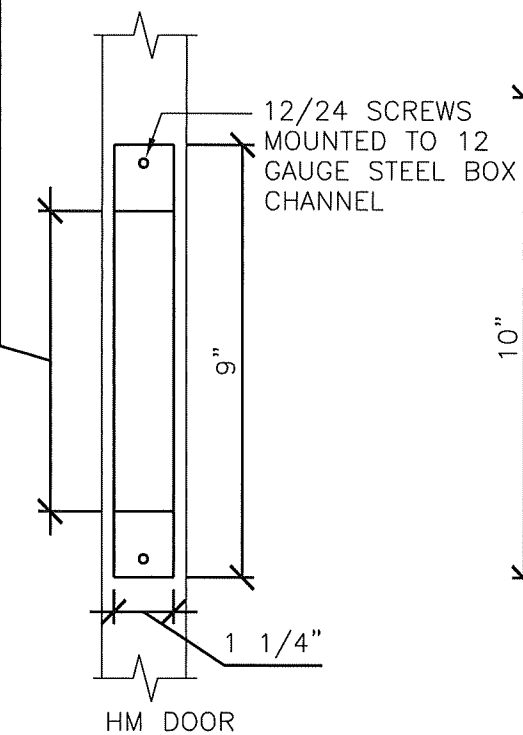
**P**  
11  
DETAIL  
3" = 1'-0"



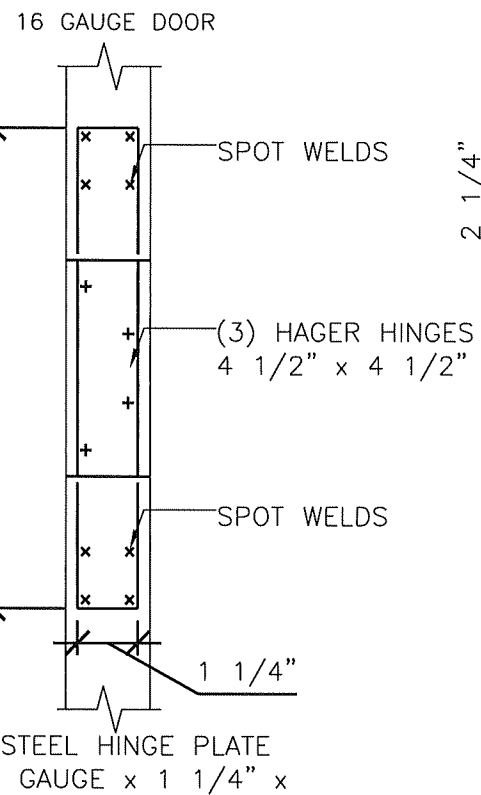
**R**  
11  
DETAIL DEADBOLT REINFORCEMENT  
3" = 1'-0"

**DOOR & FRAME REINFORCEMENTS**

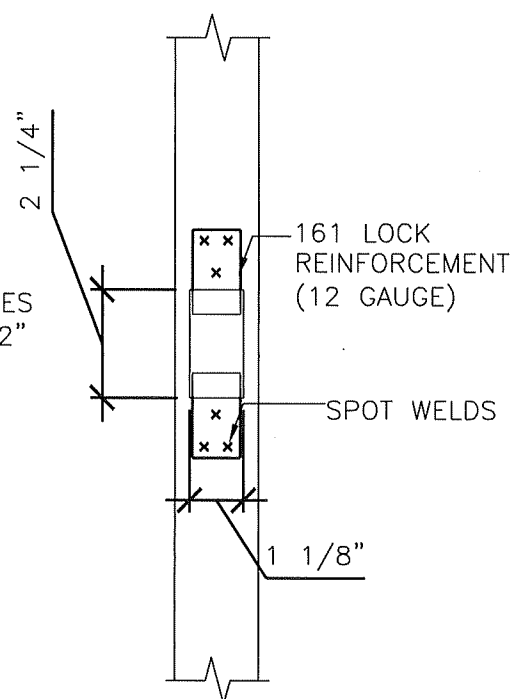
CUT 12 GAUGE STEEL BOX CHANNEL  
6 1/4" TO INSTALL MORTISE LOCK



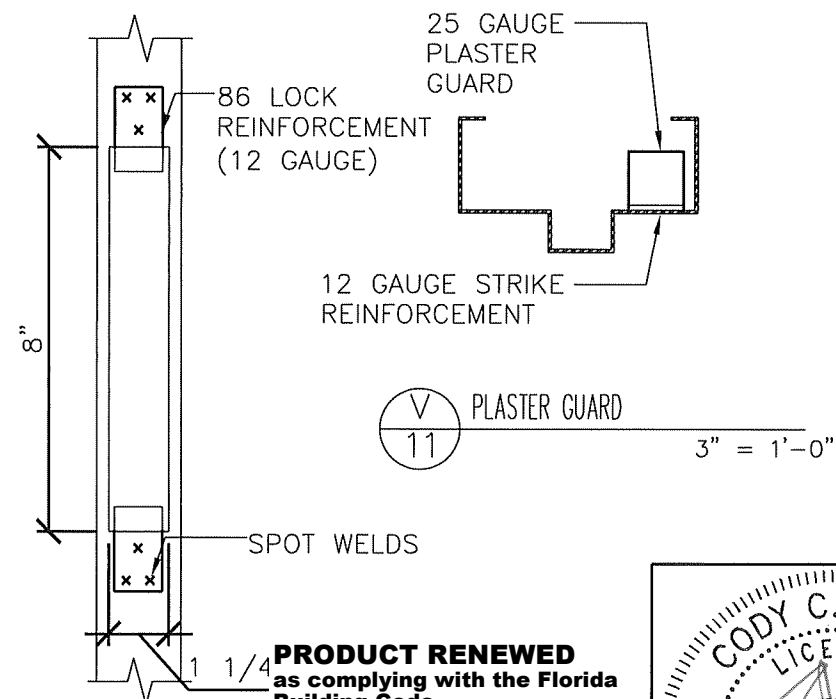
**G**  
11  
DETAIL LOCK REINFORCEMENT  
3" = 1'-0"



**H**  
11  
DETAIL DOOR HINGE REINFORCEMENT  
3" = 1'-0"

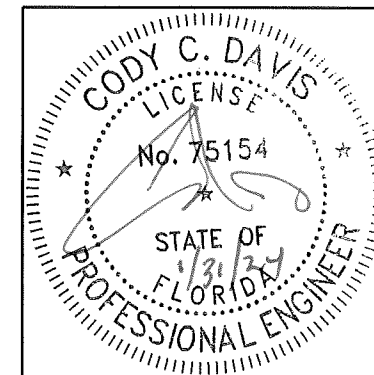


**S**  
11  
DETAIL DOOR LOCK REINFORCEMENT  
3" = 1'-0"



**T**  
11  
DETAIL DOOR LOCK  
3" = 1'-0"

**PRODUCT RENEWED**  
as complying with the Florida  
Building Code  
NOA-No. 23-1218.02  
Expiration Date 01/30/2029  
By *Ishag I. Chande*  
Miami-Dade Product Control



16 GA. OUTSWINGING GLAZED COMMERCIAL STEEL DOOR

DRAWING NUMBER QQ2  
HURRICANE TEST APPROVAL  
QQ2

4506 QUALITY LANE  
TAMPA, FLORIDA 33634  
(813) 885-1693

REVISIONS  
06-28-2000  
02-23-2005  
07-08-2008  
04-26-2019  
02-15-2021(FBC2020)  
01-31-2024(FBC2023)

SHEET 11 OF 13  
DATE 01-31-2024

*Quality  
Engineered  
Products Co., Inc.*

7'-0" Height  
Anchor and Spacing Table

See Sheet 1	GLAZED STEEL DOOR WITH DEADLOCK	DOUBLE DOOR	ANCHOR	SUBSTRATE	MAX SPACING		JAMB		HEAD	
					JAMB	HEAD	NUMBER OF ANCHORS	MAX. CORNER SPACING	NUMBER OF ANCHORS	MAX. CORNER SPACING
					$\frac{3}{8}$ " DYNABOLT	CMU	24"	22"	4	8"
"T" ANCHOR	CMU	24"	-	4	8"	-	-			
$\frac{3}{8}$ " SCREW	STEEL	20"	20"	5	10"	5	10"			
$\frac{3}{8}$ " LAG	WOOD	10"	10"	4	5"	10	5"			
$\frac{3}{8}$ " DYNABOLT	CMU	24"	-	4	8"	2	10"			
"T" ANCHOR	CMU	24"	-	4	8"	-	-			
$\frac{3}{8}$ " SCREW	STEEL	24"	24"	4	12"	3	12"			
$\frac{3}{8}$ " LAG	WOOD	20"	20"	5	10"	3	10"			

7'-0" Height  
Anchor and Spacing Table

See Sheet 3	GLAZED STEEL DOOR WITH RIM EXIT DEVICE AND REMOVABLE MULLION	DOUBLE DOOR	ANCHOR	SUBSTRATE	MAX SPACING		JAMB		HEAD	
					JAMB	HEAD	NUMBER OF ANCHORS	MAX. CORNER SPACING	NUMBER OF ANCHORS	MAX. CORNER SPACING
					$\frac{3}{8}$ " DYNABOLT	CMU	24"	20"	4	8"
"T" ANCHOR	CMU	24"	-	4	8"	-	-			
$\frac{3}{8}$ " SCREW	STEEL	20"	20"	5	8"	4	10"			
$\frac{3}{8}$ " LAG	WOOD	10"	10"	4	3"	8	5"			
$\frac{3}{8}$ " DYNABOLT	CMU	24"	-	4	8"	2	8"			
"T" ANCHOR	CMU	24"	-	4	8"	-	-			
$\frac{3}{8}$ " SCREW	STEEL	24"	24"	4	4"	2	12"			
$\frac{3}{8}$ " LAG	WOOD	16"	16"	6	6"	3	8"			

8'-0" Height  
Anchor and Spacing Table

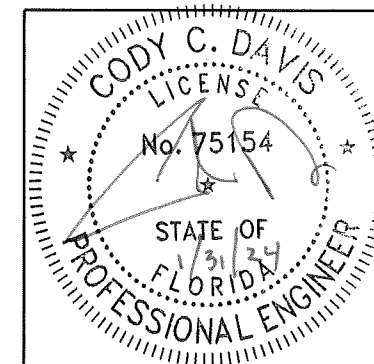
See Sheet 5	GLAZED STEEL DOOR WITH MORTISE LOCK	SINGLE DOOR	ANCHOR	SUBSTRATE	MAX SPACING		JAMB	
					JAMB	NUMBER OF ANCHORS	MAX. CORNER SPACING	
					$\frac{3}{8}$ " DYNABOLT	CMU	20"	5
"T" ANCHOR	CMU	24"	5	8"				
$\frac{3}{8}$ " SCREW	STEEL	20"	5	10"				
$\frac{3}{8}$ " LAG	WOOD	10"	10	5"				

8'-0" Height  
Anchor and Spacing Table

See Sheet 7	GLAZED STEEL DOOR WITH "DORMA" RIM EXIT DEVICE AND REMOVABLE MULLION	DOUBLE DOOR	ANCHOR	SUBSTRATE	MAX SPACING		JAMB	
					JAMB	NUMBER OF ANCHORS	MAX. CORNER SPACING	
					$\frac{3}{8}$ " DYNABOLT	CMU	20"	5
"T" ANCHOR	CMU	24"	5	8"				
$\frac{3}{8}$ " SCREW	STEEL	12"	4	3"				
$\frac{3}{8}$ " LAG	WOOD	6"	17	1" TOP, 3" BOTTOM				
$\frac{3}{8}$ " DYNABOLT	CMU	20"	5	8"				
"T" ANCHOR	CMU	24"	5	8"				
$\frac{3}{8}$ " SCREW	STEEL	20"	8	8"				
$\frac{3}{8}$ " LAG	WOOD	12"	4	3"				

ANCHOR AND SPACING TABLES

**PRODUCT RENEWED**  
as complying with the Florida Building Code  
NOA-No. 23-1218.02  
Expiration Date 01/30/2029  
By Ishag I. Chande  
Miami-Dade Product Control



DRAWING NUMBER QQ2

16 GA. OUTSWINGING GLAZED COMMERCIAL STEEL DOOR

4506 QUALITY LANE  
TAMPA, FLORIDA 33634  
(813) 885-1693

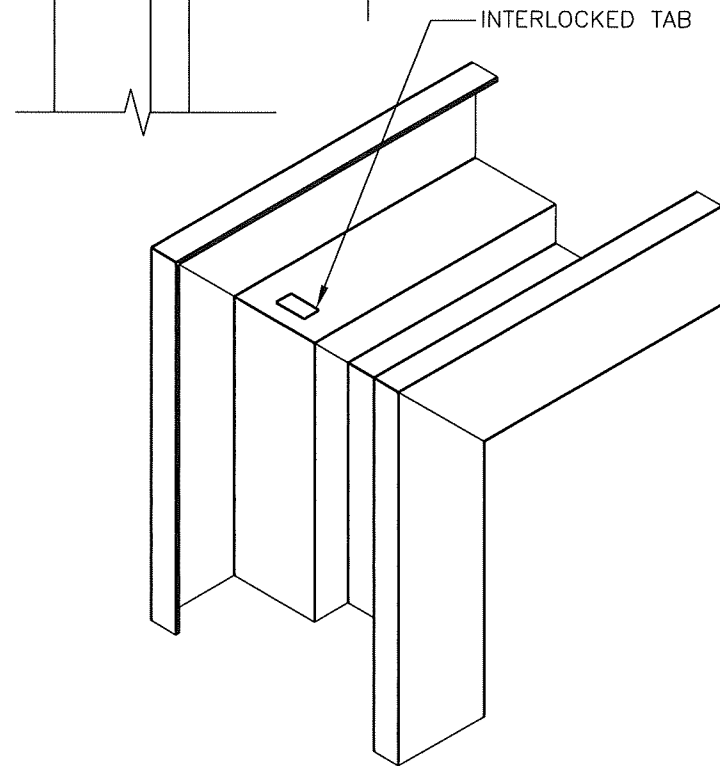
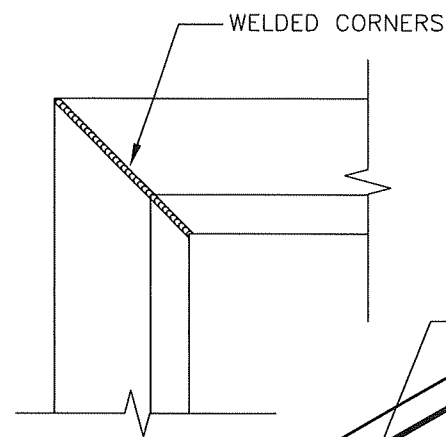
REVISIONS  
06-28-2000  
02-23-2005  
07-08-2008  
04-26-2019  
02-15-2021(FBC2020)  
01-31-2024(FBC2025)

HURRICANE TEST APPROVAL  
QQ2

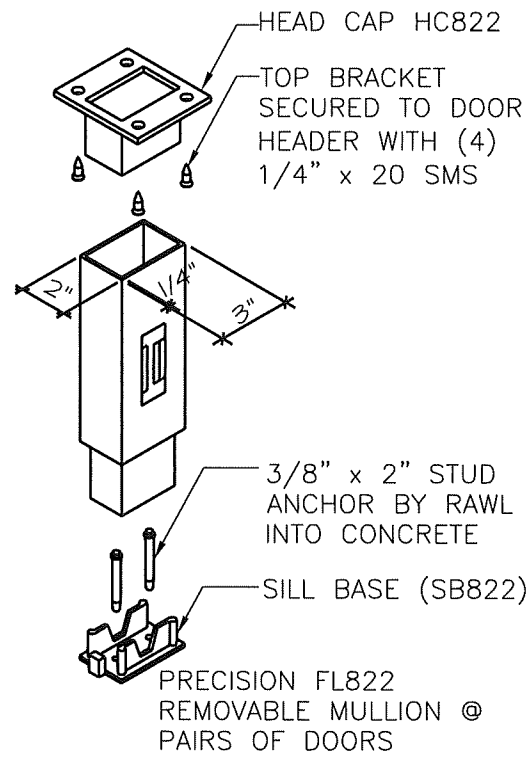
SHEET 12 OF 13  
DATE 01-31-2024

*Quality Engineered Products Co., Inc.*



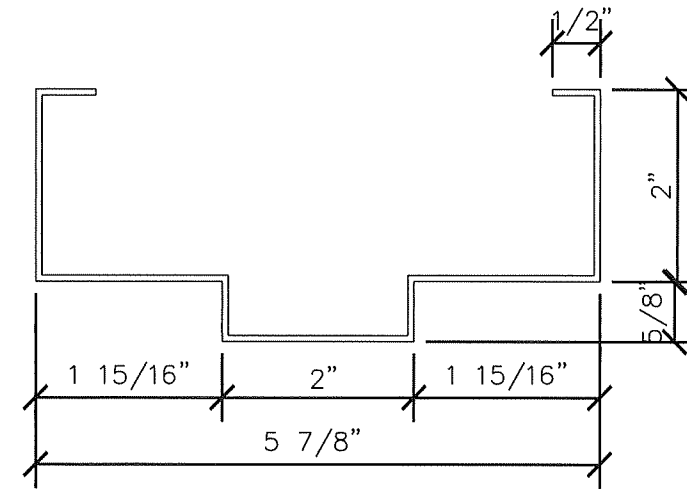


○ TYPICAL CORNER DETAIL  
3" = 1'-0"

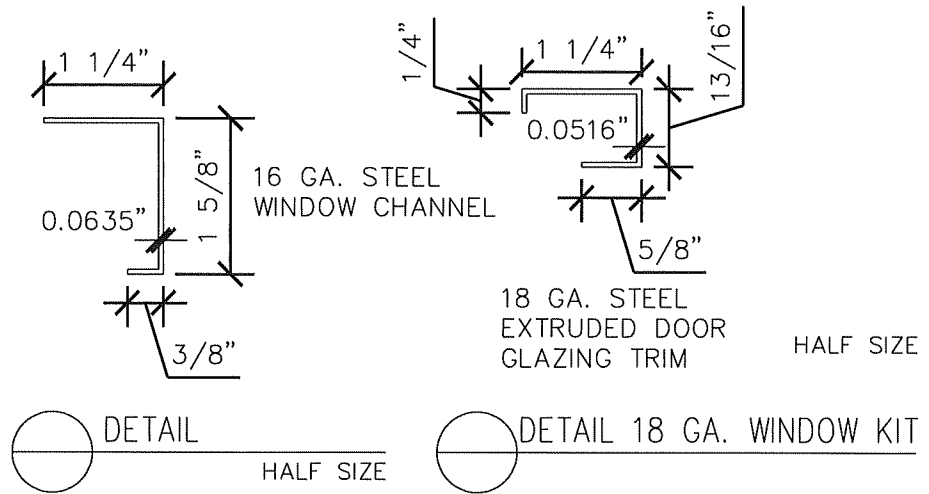


○ Z 13 DETAIL REMOVABLE MULLION  
1 1/2" = 1'-0"

COMMON DETAILS

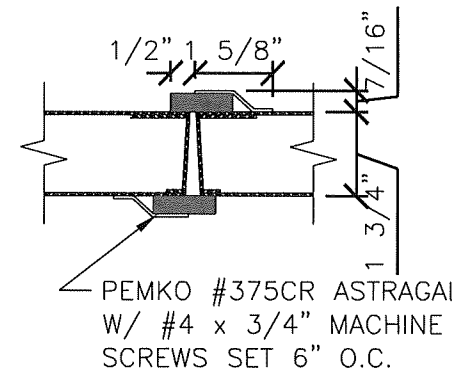


○ E 13 DETAIL 16 GA. FRAME PROFILE  
HALF SIZE



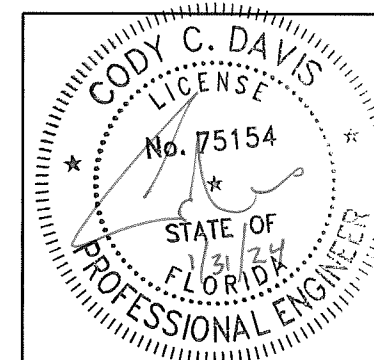
○ DETAIL  
HALF SIZE

○ DETAIL 18 GA. WINDOW KIT  
HALF SIZE



○ E 13 DETAIL ASTRAGAL  
3" = 1'-0"

**PRODUCT RENEWED**  
as complying with the Florida Building Code  
NOA-No. 23-1218.02  
Expiration Date 01/30/2029  
By *Isaac I. Chank*  
Miami-Dade Product Control



16 GA. OUTSWINGING GLAZED COMMERCIAL STEEL DOOR

DRAWING NUMBER QQ2

4506 QUALITY LANE  
TAMPA, FLORIDA 33634  
(813) 885-1693

REVISIONS

06-28-2000	
02-23-2005	
07-08-2008	
04-26-2019	
02-15-2021	(FBC2020)
01-31-2024	(FBC2023)

HURRICANE TEST APPROVAL  
QQ2

SHEET 13 OF 13

DATE 01-31-2024

*Quality Engineered Products Co., Inc.*