



DEPARTMENT OF REGULATORY AND ECONOMIC RESOURCES (RER)
BOARD AND CODE ADMINISTRATION DIVISION

NOTICE OF ACCEPTANCE (NOA)

MIAMI-DADE COUNTY
PRODUCT CONTROL SECTION

11805 SW 26 Street, Room 208
Miami, Florida 33175-2474
T (786) 315-2590 F (786) 315-2599

www.miamidade.gov/building

Shanghai Superhouse Building Material Co. Ltd.
No. 8666 Hunan Hwy. Rd. Unit 10, Level 5
Pudong New Area, Shanghai, China 201314

SCOPE:

This NOA is being issued under the applicable rules and regulations governing the use of construction materials. The documentation submitted has been reviewed and accepted by Miami-Dade County RER - Product Control Section to be used in Miami Dade County and other areas where allowed by the Authority Having Jurisdiction (AHJ).

This NOA shall not be valid after the expiration date stated below. The Miami-Dade County Product Control Section (In Miami Dade County) and/or the AHJ (in areas other than Miami Dade County) reserve the right to have this product or material tested for quality assurance purposes. If this product or material fails to perform in the accepted manner, the manufacturer will incur the expense of such testing and the AHJ may immediately revoke, modify, or suspend the use of such product or material within their jurisdiction. RER reserves the right to revoke this acceptance if it is determined by Miami-Dade County Product Control Section that this product or material fails to meet the requirements of the applicable building code.

This product is approved as described herein and has been designed to comply with the Florida Building Code, including the High Velocity Hurricane Zone.

DESCRIPTION: Series "SP60" Aluminum Awning Window – L.M.I.

APPROVAL DOCUMENT: Drawing No. **AD21-41**, titled "SP60 Awning Window – L.M.I.", sheets 1 through 8 of 8, dated 11/25/21, with revision #2 dated 12/21/2023, prepared by MCY Engineering, Inc., signed and sealed by Yiping Wang, P.E., bearing the Miami-Dade County Product Control Revision stamp with the Notice of Acceptance number and expiration date by the Miami-Dade County Product Control Section.

MISSILE IMPACT RATING: Large and Small Missile Impact Resistant

LABELING: Each unit shall bear a permanent label with the manufacturer's name or logo, city, state, model/series, and following statement: "Miami-Dade County Product Control Approved", unless otherwise noted herein.

RENEWAL of this NOA shall be considered after a renewal application has been filed and there has been no change in the applicable building code negatively affecting the performance of this product.

TERMINATION of this NOA will occur after the expiration date or if there has been a revision or change in the materials, use, and/or manufacture of the product or process. Misuse of this NOA as an endorsement of any product, for sales, advertising or any other purposes shall automatically terminate this NOA. Failure to comply with any section of this NOA shall be cause for termination and removal of NOA.

ADVERTISEMENT: The NOA number preceded by the words Miami-Dade County, Florida, and followed by the expiration date may be displayed in advertising literature. If any portion of the NOA is displayed, then it shall be done in its entirety.

INSPECTION: A copy of this entire NOA shall be provided to the user by the manufacturer or its distributors and shall be available for inspection at the job site at the request of the Building Official.

This NOA **revises NOA#22-0125.01** and consists of this page 1 and evidence pages E-1 and E-2, as well as approval document mentioned above.

The submitted documentation was reviewed by **Sifang Zhao, P.E.**



S.Z.
02/29/2024

NOA No. 23-1222.11
Expiration Date: June 02, 2027
Approval Date: February 29, 2024
Page 1

NOTICE OF ACCEPTANCE: EVIDENCE SUBMITTED

A. DRAWINGS

1. Manufacturer's die drawings and sections.
(Submitted under NOA #22-0125.01)
2. Drawing No. **AD21-41**, titled "SP60 Casement Window – L.M.I.", sheets 1 through 8 of 8, dated 11/25/21, with revision #2 dated 12/21/2023, prepared by MCY Engineering, Inc., signed and sealed by Yiping Wang, P.E.

B. TESTS

1. Test reports on: 1) Air Infiltration Test, per FBC, TAS 202-94
2) Uniform Static Air Pressure Test, Loading per FBC TAS 202-94
3) Water Resistance Test, per FBC, TAS 202-94
4) Large Missile Impact Test per FBC, TAS 201-94
5) Cyclic Wind Pressure Loading per FBC, TAS 203-94
6) Forced Entry Test, per ASTM F588 & FBC 2411.3.2.1, TAS202-94
along with marked-up drawings and installation diagram of specimen #21 aluminum fixed, awning and outswing casement windows mulled together; specimen #22, aluminum awning and outswing casement windows mulled together, and specimen #23 aluminum fixed and awning windows mulled together, prepared by Intertek Testing Services Shenzhen Ltd. Shanghai Fengxian Branch, Test Report No. **Intertek-210716005SHF-002-R1**, dated 12/21/21 and revised on 05/04/22, signed and sealed by Vinu Abraham, P.E. (Submitted under NOA #22-0125.01)

C. CALCULATIONS

1. Anchor verification calculations and structural analysis, complying with **FBC 7th Edition (2020)**, dated 01/14/22, prepared by MCY Engineering, Inc., signed and sealed by Yiping Wang, P.E. (Submitted under NOA #22-0125.01)
2. Glazing complies with **ASTM E1300-09, -16**.

D. QUALITY ASSURANCE

1. Miami-Dade Department of Regulatory and Economic Resources (RER)

E. MATERIAL CERTIFICATIONS

1. Notice of Acceptance No. **20-0915.22** issued to **Kuraray America, Inc.** for their "Trosifol® Ultraclear, Clear and Color PVB Glass Interlayers" dated 11/19/20, expiring on 07/08/24.



Sifang Zhao, P.E.
Product Control Examiner
NOA No. 23-1222.11
Expiration Date: June 02, 2027
Approval Date: February 29, 2024

Shanghai Superhouse Building Material Co. Ltd.

NOTICE OF ACCEPTANCE: EVIDENCE SUBMITTED

F. STATEMENTS

1. Statement letter of conformance, complying with **FBC 8th Edition (2023)**, dated 12/22/2023, issued by MCY Engineering, Inc., signed and sealed by Yiping Wang, P.E.
2. Statement letter of no financial interest, dated 12/22/2023, issued by MCY Engineering, Inc., signed and sealed by Yiping Wang, P.E.
3. Distributor Agreement between Shanghai Superhouse Building Material Co. Ltd., Shanghai, China and CasaNoah Design Group, LLC, Panama City Beach, Florida USA, dated 01/13/22, signed by Lilian Li and Bin Lin, respectively.
(Submitted under NOA #22-0125.01)

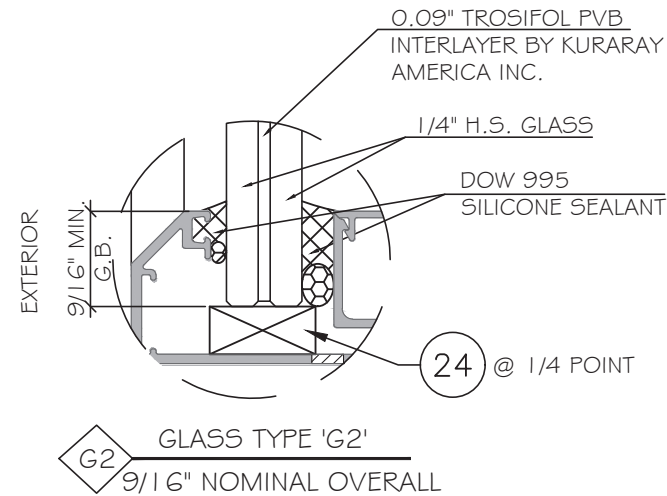
G. OTHERS

1. This NOA **revises** NOA **#22-0125.01**, expiring on 06/04/2027, for FBC 8th Edition (2023) update.



Sifang Zhao, P.E.
Product Control Examiner
NOA No. 23-1222.11
Expiration Date: June 02, 2027
Approval Date: February 29, 2024

SHANGHAI SUPERHOUSE BUILDING MATERIAL CO., LTD
SP60 AWNING WINDOW LARGE MISSILE IMPACT



NOTE:
GLASS COMPLIES WITH ASTM E1300-16
(3 SEC. GUSTS).

GENERAL NOTES:

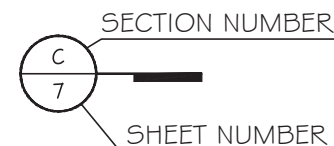
- THIS PRODUCT HAS BEEN DESIGNED AND TESTED TO COMPLY WITH THE REQUIREMENTS OF THE 8TH EDITION OF FLORIDA BUILDING CODE 2023 INCLUDING HIGH VELOCITY HURRICANE ZONE (HVHZ).
- WINDOWS ARE RATED FOR LARGE MISSILE IMPACT. IMPACT SHUTTERS ARE NOT REQUIRED.
- THESE WINDOWS ARE APPROVED FOR AIR AND WATER INFILTRATION.
- ANCHORS SHALL BE AS LISTED, SPACED AS SHOWN ON DETAILS.
ANCHORS EMBEDMENT TO BASE MATERIAL SHALL BE BEYOND WALL DRESSING OR STUCCO.
- ANCHORING OR LOADING CONDITIONS NOT SHOWN IN THESE DETAILS ARE NOT PART OF THIS APPROVAL.
- MATERIALS INCLUDING BUT NOT LIMITED TO STEEL / METAL SCREWS THAT COME INTO CONTACT WITH OTHER DISSIMILAR MATERIALS SHALL MEET THE REQUIREMENTS OF THE 8TH EDITION OF FLORIDA BUILDING CODE 2023 SECTION AS APPLICABLE.
- METAL STRUCTURES BY OTHERS TO BE DESIGNED TO SUPPORT THE LOADS IMPOSED BY THIS GLAZING SYSTEM AND TO TRANSFER SUCH LOADS TO THE BUILDING MAIN STRUCTURE.
- ULTIMATE LOAD OBTAINED FROM ASCE 7-22, MULTIPLY BY 0.6 SHALL BE LESS THAN OR EQUAL TO MAX. DESIGN LOAD IN THIS DOCUMENT. THE DESIGN LOADS SHOWN IN THIS DOCUMENT ARE ALLOWABLE DESIGN LOADS.
- MANUFACTURER'S LABEL SHALL BE LOCATED ON A READILY VISIBLE LOCATION IN ACCORDANCE WITH SECTION 1709.9.3 OF FLORIDA BUILDING CODE LABELING TO COMPLY WITH SECTION 1709.9.2.
- SEALANT:
ALL FRAME CORNERS, JOINTS, MULLION SEAMS AND PERIMETER GLAZING BEAD TO FRAME INSTALLATION FASTENERS SEALED WITH SILICONE SEALANT.

USE CHARTS AS FOLLOWS.

- STEP 1: DETERMINE DESIGN WIND LOAD REQUIREMENTS BASED ON WIND VELOCITY, BLDG. HEIGHT, WIND ZONE USING APPLICABLE ASCE 7-22 STANDARD OR WIND TUNNEL REPORTS.
- STEP 2: SEE SHEET E I FOR APPROVED TYPICAL ELEVATION & CONFIGURATION.
- STEP 3: ANCHOR OPTION SEE SHEET D I. ANCHOR LAYOUT SEE SHEET E I.
- STEP 4: THE LOWEST VALUE RESULTING FROM STEPS 2 & 3 THAT EXCEED THE DESIGN WIND PRESSURES DETERMINED THRU STEP 1 SHALL APPLY TO ENTIRE SYSTEM.

ABBREVIATIONS AND SYMBOLS

G.B. - GLASS BITE
D.L.O. - DAYLITE OPENING
F.H. - FRAME HEIGHT
F.W. - FRAME WIDTH
W/ - WITH
W/O - WITHOUT
O.C. - ON CENTER



PRODUCT CONTROL APPROVAL:

PRODUCT REVISED
as complying with the Florida
Building Code
NOA-No. 23-1222.11

Expiration Date 06/02/2027

By 

Miami-Dade Product Control

YIPING WANG, P.E.
FLORIDA REGISTRATION
FL #55983
C.A.N. 38877

Yiping Wang

STATE OF
FLORIDA
PROFESSIONAL ENGINEER

December 22nd, 2023

MCY ENGINEERING, INC.
GLAZING CONSULTANTS
12781 MIRAMAR PKWY, STE. 301
MIRAMAR, FL 33027 P: 305.271.0101
F: 305.271.0102
mcyengineering.com

SP60 AWNING WINDOW - L.M.I.

SHANGHAI SUPERHOUSE BUILDING MATERIAL CO., LTD
LEVEL 5, BUILDING 10, NO.8666 HUNAN RD, PUDONG NEW AREA
SHANGHAI, CHINA
TEL.86 021-5822 0630 CELL.86 135-8572-3609

SP60 AWNING WINDOW - L.M.I.

SHANGHAI SUPERHOUSE BUILDING MATERIAL CO., LTD
LEVEL 5, BUILDING 10, NO.8666 HUNAN RD, PUDONG NEW AREA
SHANGHAI, CHINA
TEL: 86 204 5922 0620, CELL: 86 125 9579 2600

TEL. 800 UZ 1-3822 0630 CELL. 800 135-8372-3609

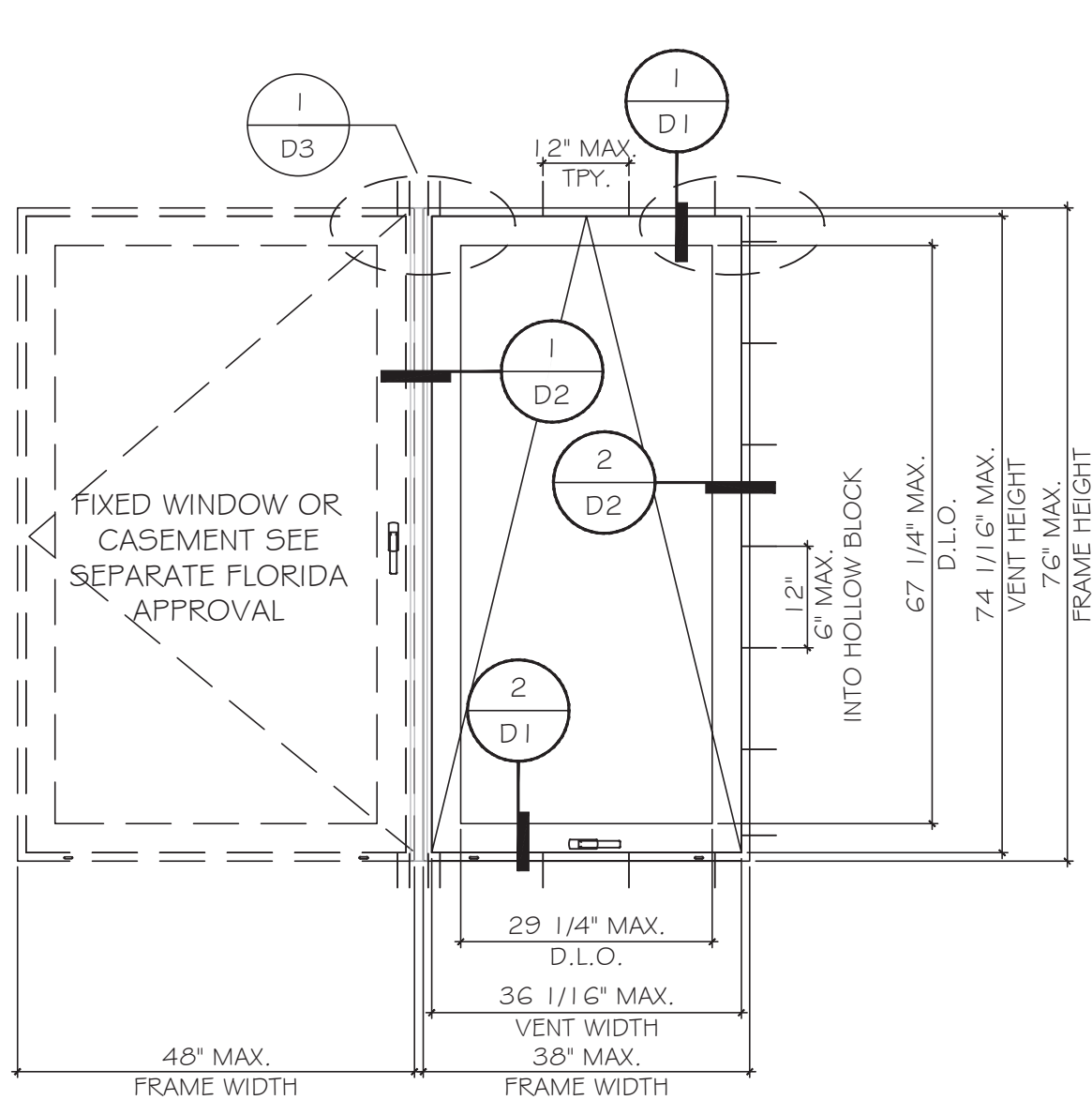
[illegible]

Drawn Date	Scale
12.21.2023	AS SHOWN

DRAWING NO.
AD21-41

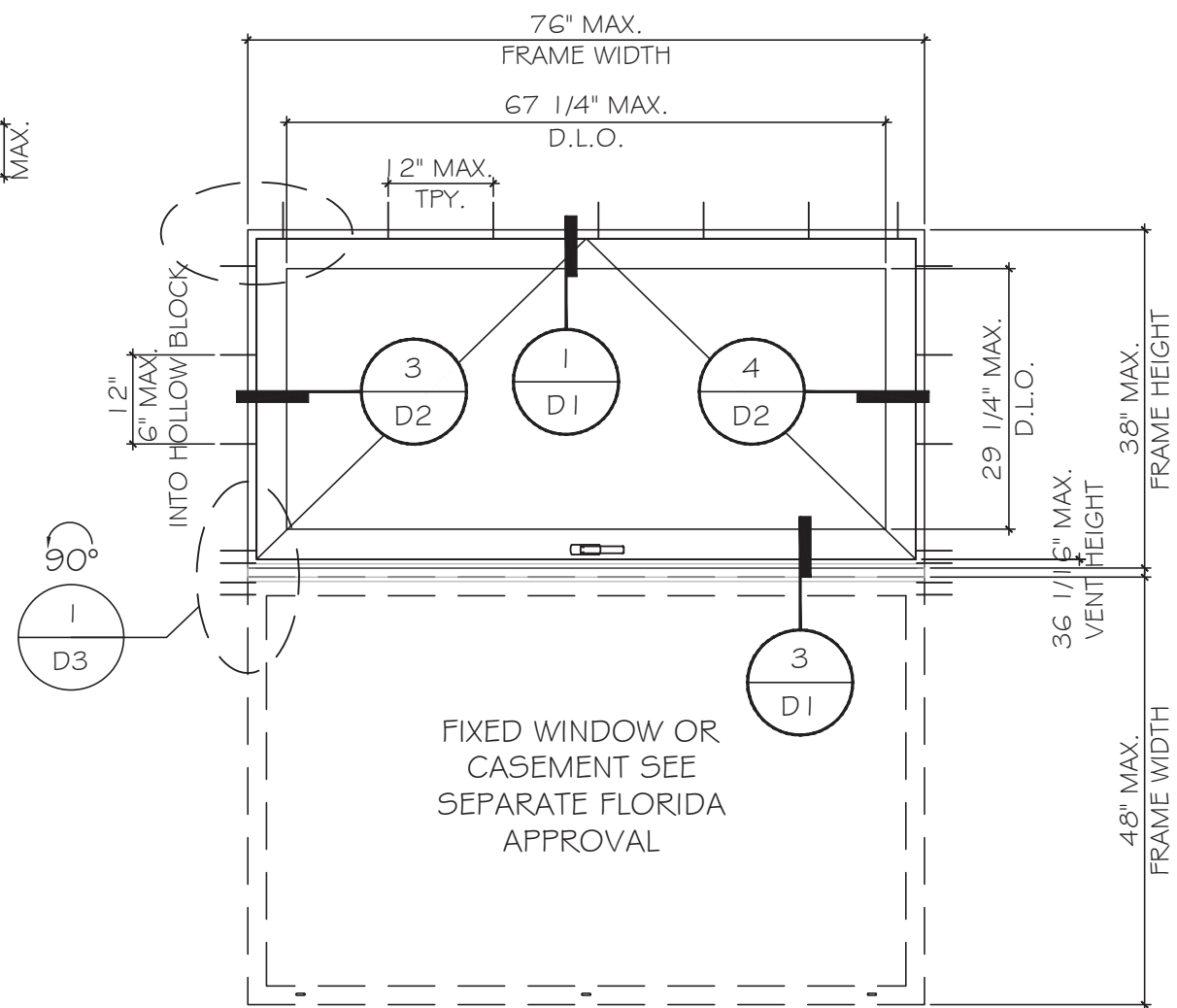
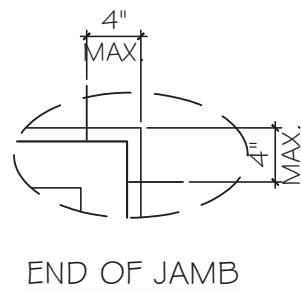
COVER

Sheet No.
OF 8



TYPICAL EXTERIOR ELEVATION

DESIGN LOAD
FOR SIZE SHOWN ABOVE OR SMALLER AS PERMITTED BY FBC
+60 PSF -60 PSF



TYPICAL EXTERIOR ELEVATION

DESIGN LOAD
FOR SIZE SHOWN ABOVE OR SMALLER AS PERMITTED BY FBC
+60 PSF -60 PSF

PRODUCT CONTROL APPROVAL:
PRODUCT REVISED as complying with the Florida Building Code NOA-No. 23-1222.11
Expiration Date 06/02/2027
By  Miami-Dade Product Control

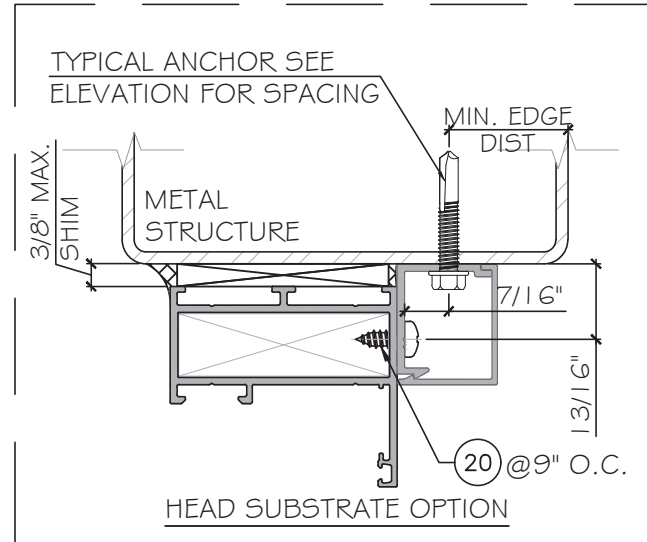
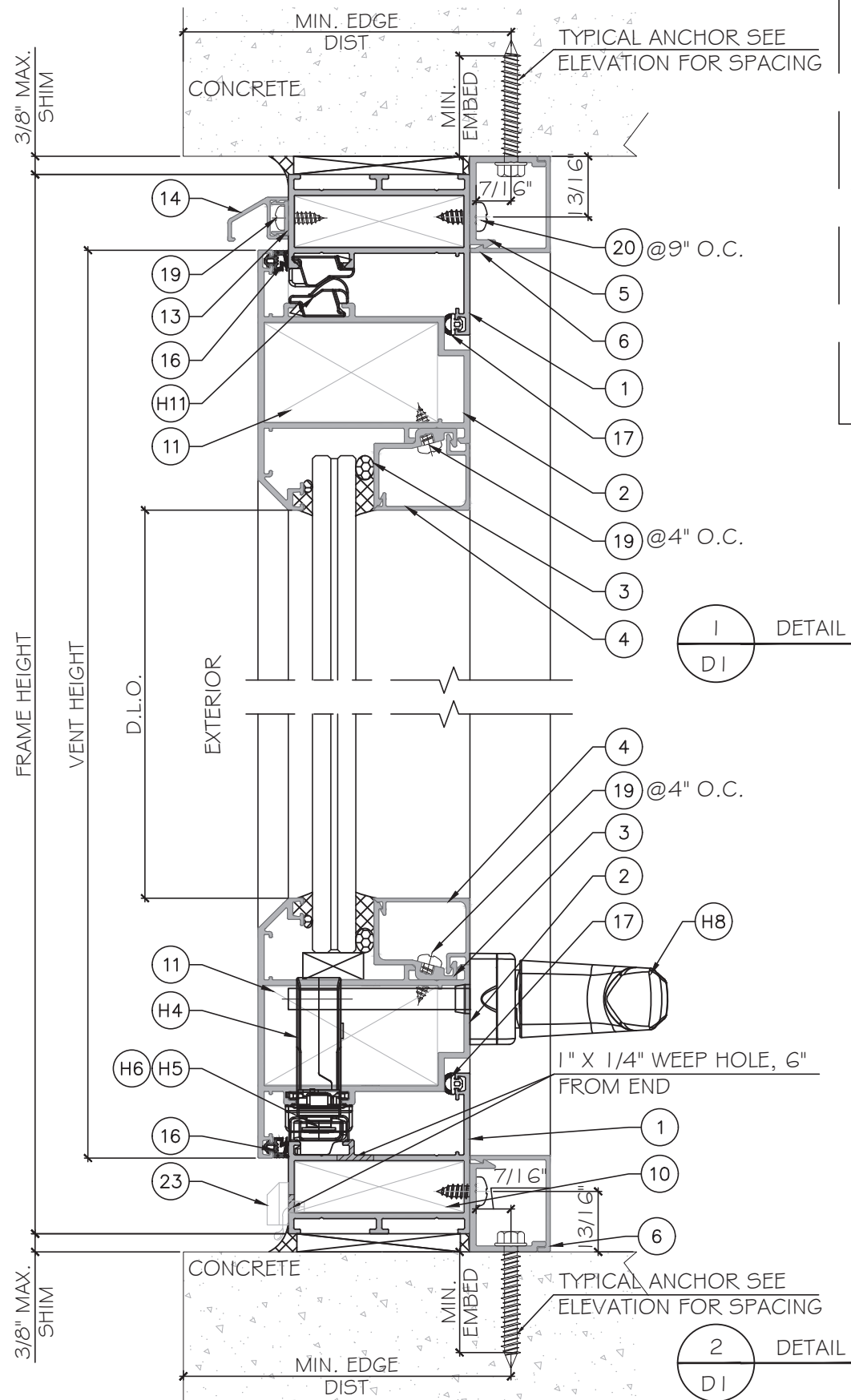
Drawn Date 12.21.2023	Scale AS SHOWN
DRAWING NO. AD21-41	Sheet No. 2 OF 8



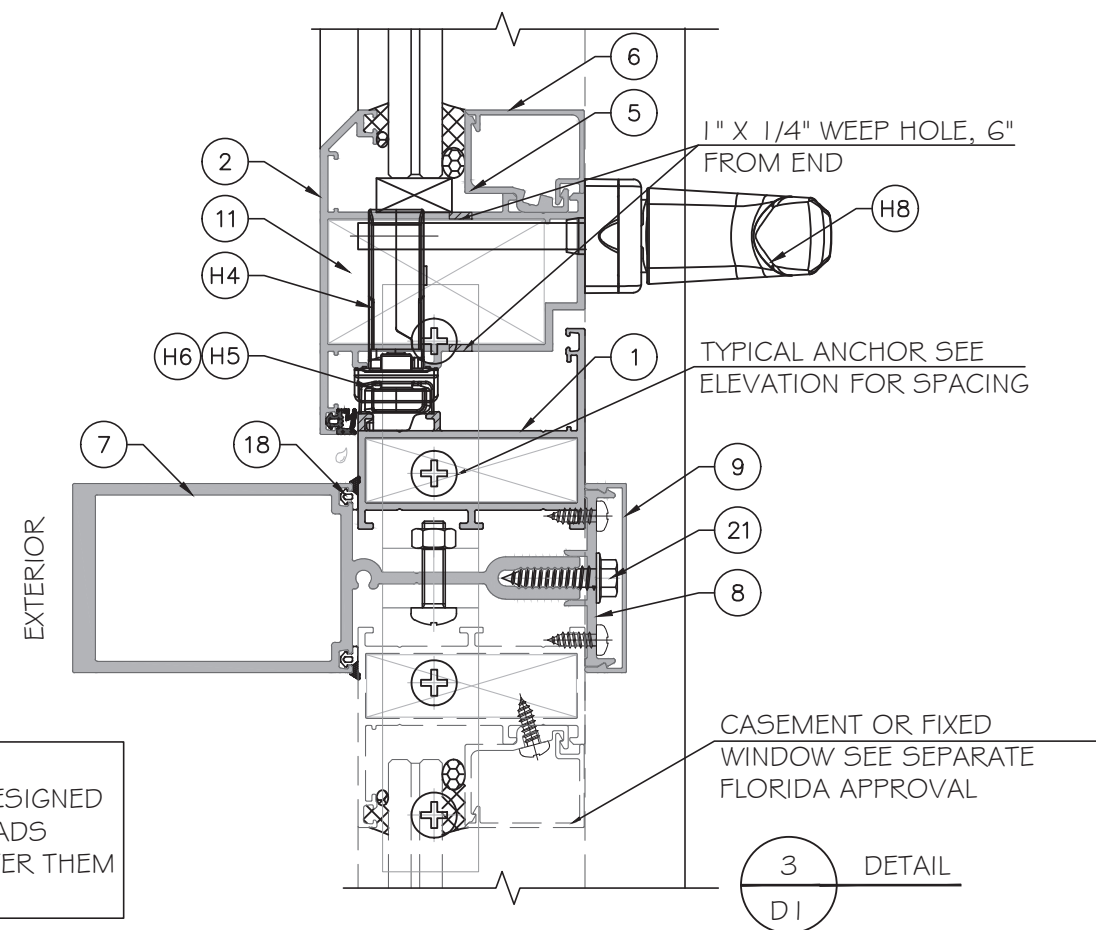
MCY ENGINEERING, INC.
GLAZING CONSULTANTS
12781 MIRAMAR PKWY. STE. 301
MIRAMAR, FL 33027 P: 305.271.0117
www.MCYEngineering.com mcy@mcyengineering.com

SP60 AWNING WINDOW - L.M.I.

SHANGHAI SUPERHOUSE BUILDING MATERIAL CO., LTD
LEVEL 5, BUILDING 10, NO.8666 HUNAN RD, PUDONG NEW AREA
SHANGHAI, CHINA
TEL.86 021-5822 0630 CELL.86 135-8572-3609



NOTE:
METAL STRUCTURE BY OTHERS MUST BE DESIGNED
AND ANCHORED PROPERLY TO SUSTAIN LOADS
IMPOSED BY GLAZING SYSTEM AND TRANSFER THEM
TO THE BUILDING STRUCTURE.



ANCHOR TYPES: (SEE ELEVATIONS FOR SPACING)

TYPE 'A' -- 1/4" DIA. ULTRACON+ BY 'DEWALT' ($F_u = 164 \text{ KSI}$, $F_y = 148 \text{ KSI}$)
DIRECTLY INTO CONCRETE OR BLOCKS
1 3/4" MIN. EMBED INTO CONCRETE (HEAD/ SILL/ JAMB)
1 3/4" MIN. EMBED INTO HOLLOW OR GROUT FILLED BLOCKS (JAMB ONLY)

TYPE 'B' -- 1/4" DIA. SS SCREW ($F_u = 100 \text{ KSI}$, $F_y = 65 \text{ KSI}$)
OR 1/4" TEKS (GRADE 5) ($F_u = 120 \text{ KSI}$, $F_y = 92 \text{ KSI}$)
INTO FBC APPROVED MULLIONS (1/8" THK. MIN.)
OR INTO METAL STRUCTURES, STEEL: 1/8" THK. MIN. (A36 MIN.)
(3) THREADS MIN. TO EXTEND BEYOND METAL THICKNESS
(STEEL IN CONTACT WITH ALUMINUM TO BE PLATED OR PAINTED)

TYPICAL EDGE DISTANCE

INTO CONCRETE OR BLOCKS = 2-1/2" MIN.
INTO METAL STRUCTURE = 3/4" MIN.
CONCRETE AT HEAD, SILL OR JAMB $f'_c = 3000 \text{ PSI}$ MIN.
BLOCK AT JAMB $f'_m = 2000 \text{ PSI}$ MIN.

PRODUCT CONTROL APPROVAL:

PRODUCT REVISED
as complying with the Florida
Building Code
NOA-No. 23-1222.11
Expiration Date 06/02/2027

By *[Signature]*
Miami-Dade Product Control

YIN WANG, P.E.
FLORIDA REGISTRATION
#55983
C.A.N. 538677

December 22nd, 2023

MCY ENGINEERING, INC.
GLAZING CONSULTANTS

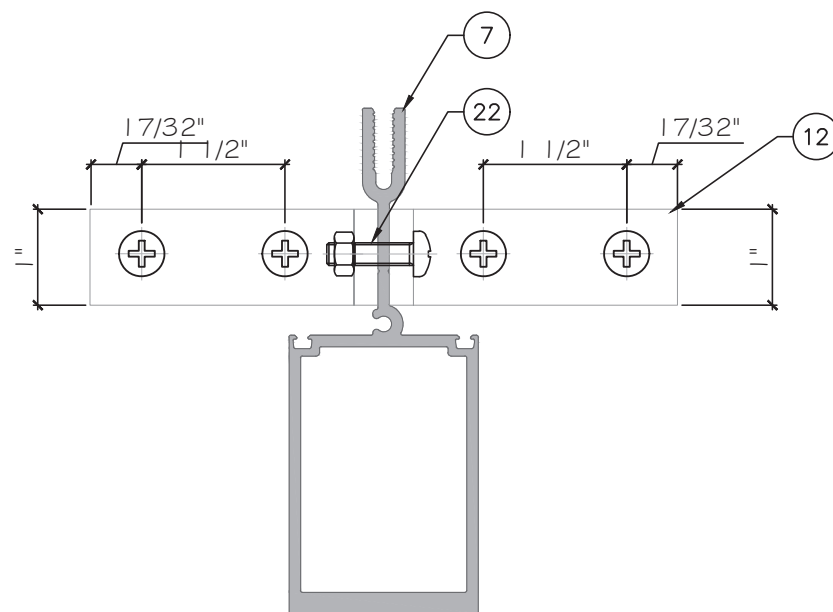
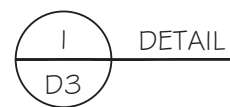
MCY

12781 MIRAMAR PKWY. STE. 301
MIRAMAR, FL 33027 P: 305.271.0117
www.MCYEngineering.com mcy@mcyengineering.com

SP60 AWNING WINDOW - L.M.I.

SHANGHAI SUPERHOUSE BUILDING MATERIAL CO., LTD
LEVEL 5, BUILDING 10, NO.8666 HUNAN RD, PUDONG NEW AREA
SHANGHAI, CHINA
TEL.86 021-5822 0630 CELL.86 135-8572-3609

Drawn Date	Scale	Rev. No.	Date	By	Description
12.21.2023	AS SHOWN	R2	12.21.2023	JAMES	UPDATE FBC 2023
DRAWING NO. AD21-41					
D1					
Sheet No. 3 OF 8					



SECTION A-A

MULLION ANCHOR:

TYPE 'A' -- 1/4" DIA. ULTRACON+ BY 'DEWALT' (F_u=164 KSI, F_y=148 KSI)
DIRECTLY INTO CONCRETE ONLY
1 3/4" MIN. EMBED INTO CONCRETE(HEAD/ SILL/ JAMBS)

TYPE 'B' -- 1/4" DIA. SS SCREW ($F_u = 100$ KSI, $F_y = 65$ KSI)
1/4" DIA. TEKS ($F_u = 120$ KSI, $F_y = 92$ KSI)
 INTO FBC APPROVED MULLIONS (1/8" THK. MIN.)
 OR INTO METAL STRUCTURES, STEEL: 1/8" THK. MIN. (A36 MIN.)
 (3) THREADS MIN. TO EXTEND BEYOND METAL THICKNESS
 (STEEL IN CONTACT WITH ALUMINUM TO BE PLATED OR PAINTED)

TYPICAL EDGE DISTANCE

INTO CONCRETE = 2-1/2" MIN.
 INTO METAL STRUCTURE = 3/4" MIN.
 CONCRETE AT HEAD, SILL OR JAMB $f'_c=3000\text{PSI}$ MIN.

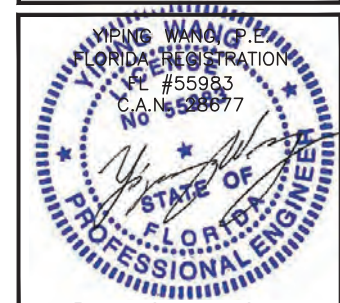
FOR CONDITION NOT COVERED, TO BE CHECKED
BY DELEGATED ENGINEER ON JOB BASES.

PRODUCT CONTROL APPROVAL:

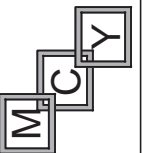
PRODUCT REVISED
as complying with the Florida
Building Code
NOA-No. 23-1222.11

Expiration Date 06/02/2027

By
Miami-Dade Product Control



December 22nd, 2023



MCY ENGINEERING, INC.
GLAZING CONSULTANTS

2781 MIRAMAR PKWY, STE. 301
MIRAMAR, FL 33027 P: 305.271.0117
mcengineering.com mc@mcengineering.com

mcy@mcyengineering.com

www.MCYEngineering.com

SP60 AWNING WINDOW - L.M.I.

SHANGHAI SUPERHOUSE BUILDING MATERIAL CO., LTD
LEVEL 5, BUILDING-10, NO.8666 HUNAN RD, PUDONG NEW AREA
SHANGHAI, CHINA

TEL.86 021-5822 0630 CELL.86 135-8572-3609

[illegible]

Drawn Date	Scale
12.21.2023	AS SHOWN

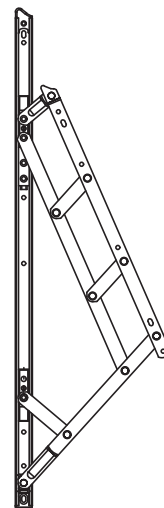
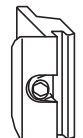
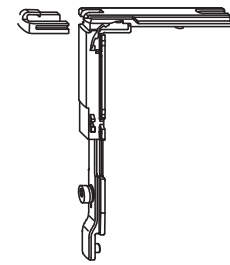
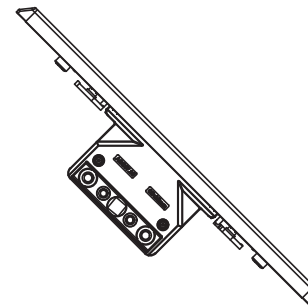
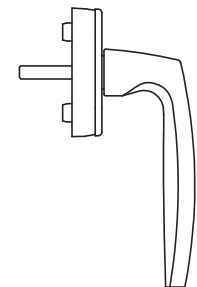
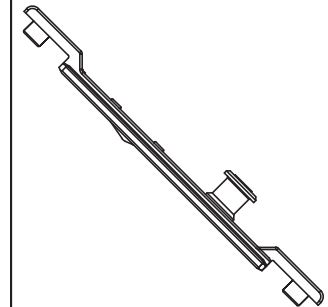
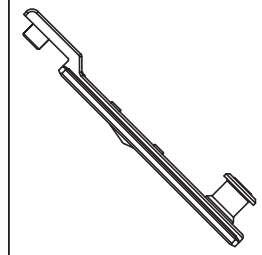
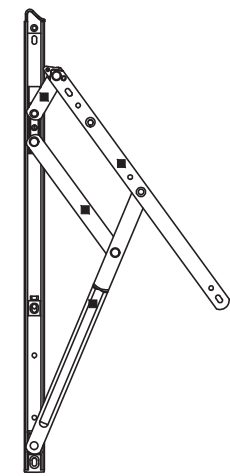
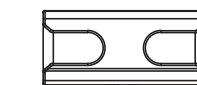
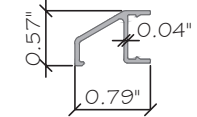
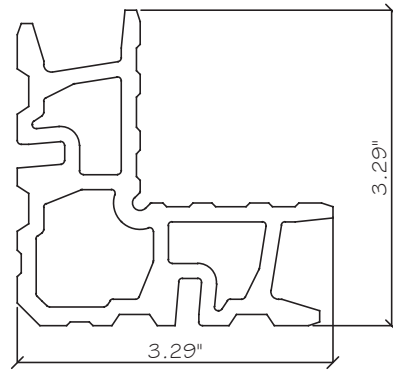
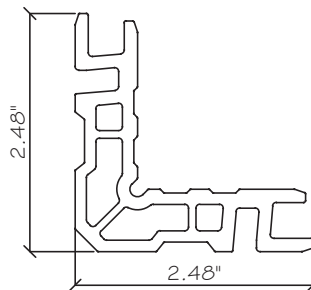
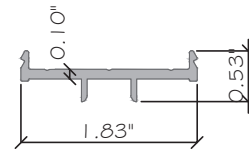
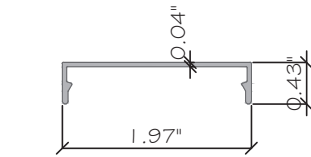
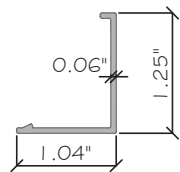
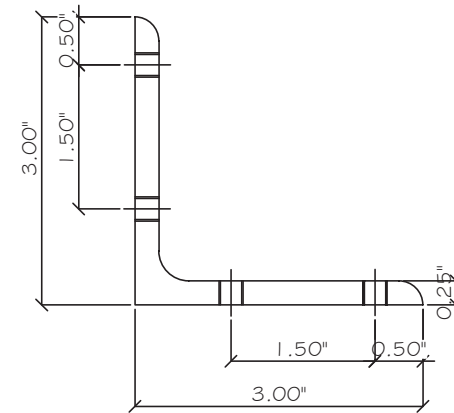
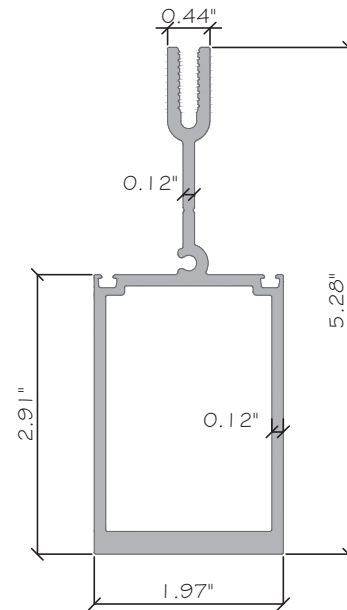
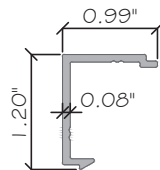
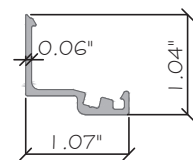
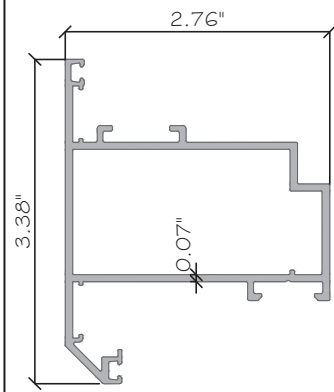
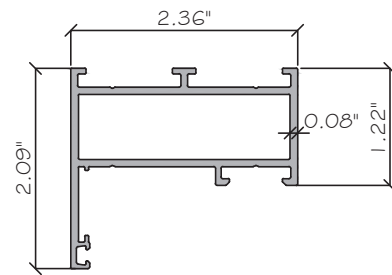
DRAWING NO.

AD21-41

03

Sheet No.

5 OF 8

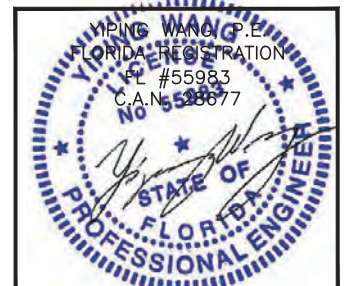


PRODUCT CONTROL APPROVAL:

PRODUCT REVISED
as complying with the Florida
Building Code
NOA-No. 23-1222.11

Expiration Date 06/02/2027

By _____
Miami-Dade Product Control

[illegible]

MCY ENGINEERING, INC.
GLAZING CONSULTANTS

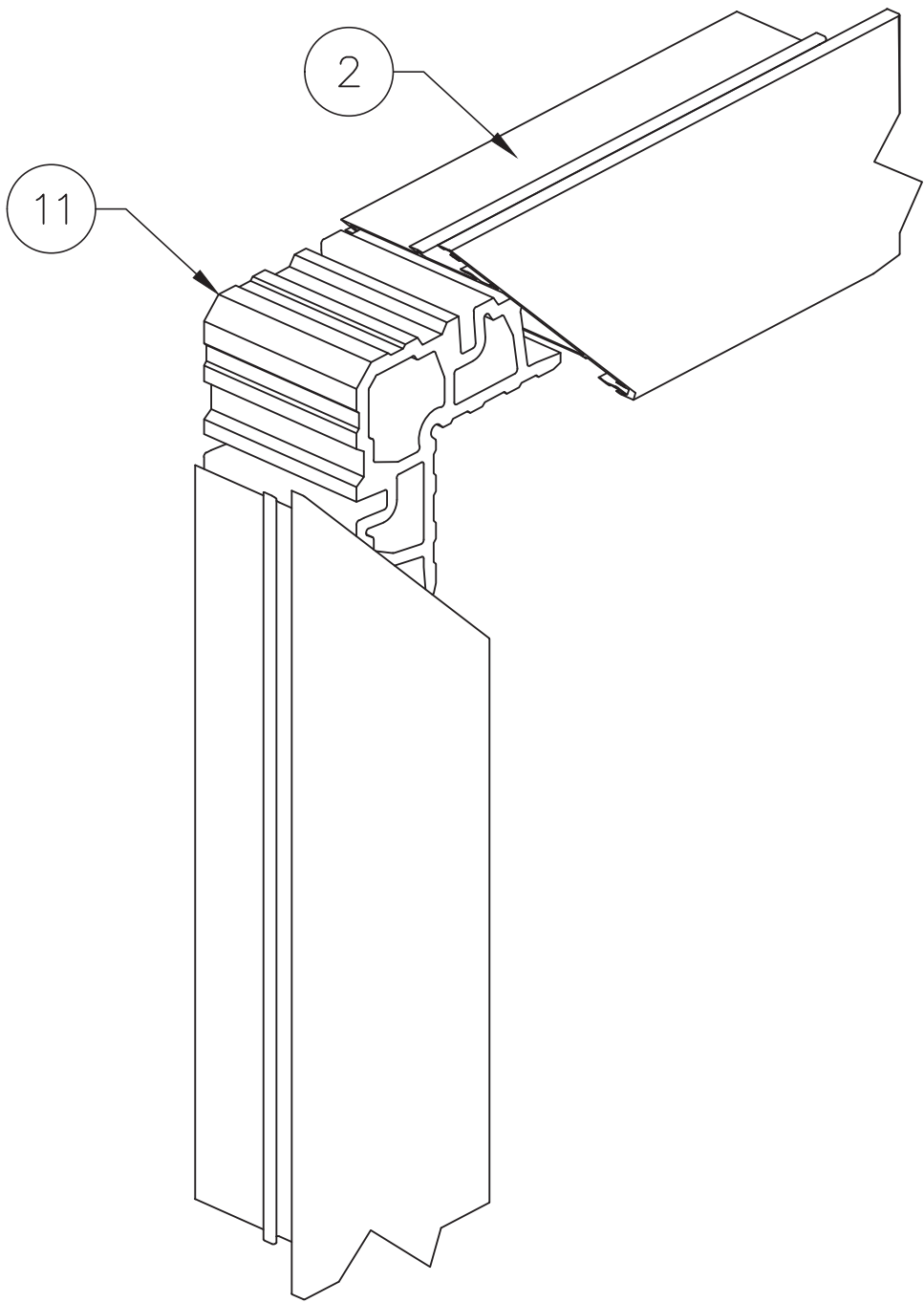
12781 MIRAMAR PKWY., STE. 301
MIRAMAR, FL 33027 P: 305.271.01

www.MCYEngineering.com mcy@mcyengineering.com

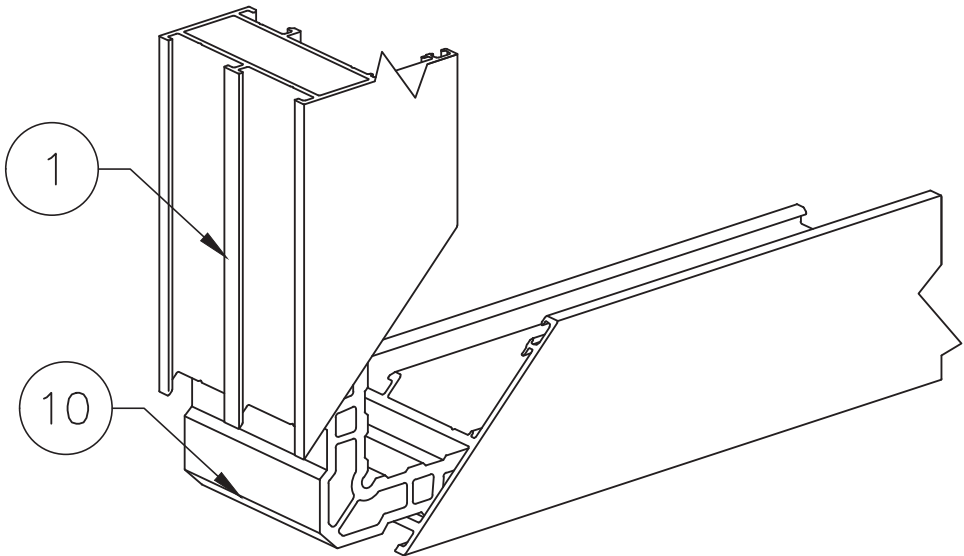
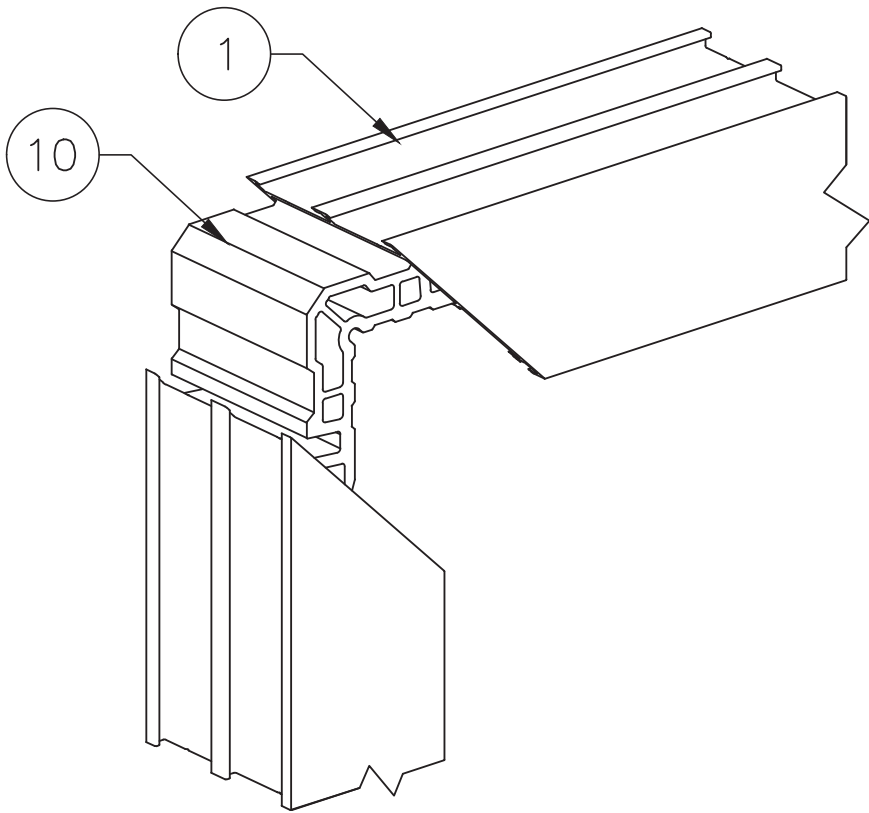
SP60 AWNING WINDOW - L.M.I.

SHANGHAI SUPERHOUSE BUILDING MATERIAL CO., LTD
LEVEL 5, BUILDING 10, NO.8666 HUNAN RD, PUDONG NEW AREA
SHANGHAI, CHINA

TEL.86 021-5822 0630 CELL.86 135-8572-3609



VENT CORNER



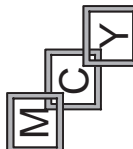
FRAME CORNER

PRODUCT CONTROL APPROVAL:

PRODUCT REVISED
as complying with the Florida
Building Code
NOA-No. 23-1222.11
Expiration Date 06/02/2027
By 
Miami-Dade Product Control

YIPING WANG, P.E.
FLORIDA REGISTRATION
FL #55983
C.A.N. 538677

December 22nd, 2023



MCY ENGINEERING, INC.
GLAZING CONSULTANTS
12781 MIRAMAR PKWY, STE. 301
MIRAMAR, FL 33027 P: 305.271.0117
www.MCYEngineering.com mcy@mcyengineering.com

SP60 AWNING WINDOW - L.M.I.

SHANGHAI SUPERHOUSE BUILDING MATERIAL CO., LTD
LEVEL 5, BUILDING 10, NO.8666 HUNAN RD, PUDONG NEW AREA
SHANGHAI, CHINA
TEL.86 021-5822 0630 CELL.86 135-8572-3609

Rev. No.	Date	Drawn By	Description
R2	12/21/2023	JAMES	UPDATE FBC 2023

Drawn Date 12.21.2023

Scale AS SHOWN

DRAWING NO. AD21-41

ASSEMBLY

Sheet No. 8 OF 8