



DEPARTMENT OF REGULATORY AND ECONOMIC RESOURCES (RER)
BOARD AND CODE ADMINISTRATION DIVISION

NOTICE OF ACCEPTANCE (NOA)

MIAMI-DADE COUNTY
PRODUCT CONTROL SECTION
11805 SW 26 Street, Room 208
Miami, Florida 33175-2474
T (786) 315-2590 F (786) 315-2599

www.miamidade.gov/building

Pinecrest Industries of Fla, Inc.
7457 Commercial Circle
Fort Pierce, FL 34951

SCOPE:

This NOA is being issued under the applicable rules and regulations governing the use of construction materials. The documentation submitted has been reviewed and accepted by Miami-Dade County RER-Product Control Section to be used in Miami-Dade County and other areas where allowed by the Authority Having Jurisdiction (AHJ).

This NOA shall not be valid after the expiration date stated below. The Miami-Dade County Product Control Section (In Miami-Dade County) and/ or the AHJ (in areas other than Miami-Dade County) reserve the right to have this product or material tested for quality assurance purposes. If this product or material fails to perform in the accepted manner, the manufacturer will incur the expense of such testing and the AHJ may immediately revoke, modify, or suspend the use of such product or material within their jurisdiction. RER reserves the right to revoke this acceptance if it is determined by Miami-Dade County Product Control Section that this product or material fails to meet the requirements of the applicable building code.

This product is approved as described herein and has been designed to comply with the Florida Building Code, including the High Velocity Hurricane Zone.

DESCRIPTION: Series "Palm Beach" Single Outswing Wood Casement Window w/Sidelite - L.M.I.

APPROVAL DOCUMENT: Drawing No. **PIWF-02-2013**, titled "Palm Beach Series - Outswing Single Wood Window, Casement w/1 Side Lite", sheets 1 through 5 of 5, dated March 2021, prepared by Mathers Engineering Corporation, signed and sealed by William J. Mathers, P.E., bearing the Miami-Dade County Product Control Revision stamp with the Notice of Acceptance number and expiration date by the Miami-Dade County Product Control Section.

MISSILE IMPACT RATING: Large and Small Missile Impact Resistant

LABELING: Each unit shall bear a permanent label with the manufacturer's name or logo, city, state, model/series, and following statement: "Miami-Dade County Product Control Approved", unless otherwise noted herein.

RENEWAL of this NOA shall be considered after a renewal application has been filed and there has been no change in the applicable building code negatively affecting the performance of this product.

TERMINATION of this NOA will occur after the expiration date or if there has been a revision or change in the materials, use, and/ or manufacture of the product or process. Misuse of this NOA as an endorsement of any product, for sales, advertising or any other purposes shall automatically terminate this NOA. Failure to comply with any section of this NOA shall be cause for termination and removal of NOA.

ADVERTISEMENT: The NOA number preceded by the words Miami-Dade County, Florida, and followed by the expiration date may be displayed in advertising literature. If any portion of the NOA is displayed, then it shall be done in its entirety.

INSPECTION: A copy of this entire NOA shall be provided to the user by the manufacturer or its distributors and shall be available for inspection at the job site at the request of the Building Official.

This NOA **revises NOA No. 22-0719.05** and consists of this page 1 and evidence pages E-1, E-2, E-3, E-4 and E-5, as well as approval document mentioned above.

The submitted documentation was reviewed by **Ishaq I. Chanda, P.E.**



Ishaq I. Chanda

NOA No. 24-0117.16
Expiration Date: February 27, 2028
Approval Date: February 15, 2024
Page 1

NOTICE OF ACCEPTANCE: EVIDENCE SUBMITTED

1. EVIDENCE SUBMITTED UNDER PREVIOUS NOA's

A. DRAWINGS

1. Manufacturer's die drawings and sections.
(Submitted under NOA No. 02-0503.07)
2. Drawing No **PIWF-02-2013**, titled "Palm Beach Series - Outswing Single Wood Window, Casement w/1 Side Lite", sheets 1 through 5 of 5, dated May 2016, prepared by Mathers Engineering Corporation, signed and sealed by William J. Mathers, P.E.
(Submitted under NOA No. 18-0307.06)

B. TESTS

1. Test report on: 1) Dissection and Verification Test along with marked-up drawings and installation diagram of an outswing single wood casement window, prepared by National Certified Laboratories, Test Report No. **NCTL-210-3863-1**, dated 02/27/13, signed and sealed by Gerard J. Ferrara, P.E.
(Submitted under NOA No. 12-1206.07)
2. Test reports on: 1) Large Missile Impact Test per PA 201-94
2) Cyclic Wind Pressure Loading per PA 203-94
3) Forced Entry Test, per PA 202-94
along with marked-up drawings and installation diagram of an outswing single wood casement window w/sidelite, prepared by Hurricane Engineering & Testing, Inc., Test Report No. **HETI-00-937**, dated 08/25/2000, signed and sealed by Hector Medina, P.E.
(Submitted under NOA No. 02-0503.07)
3. Test reports on: 1) Air Infiltration Test, per PA 202-94
2) Uniform Static Air Pressure Test, Loading per PA 202-94
3) Water Resistance Test, per PA 202-94
along with marked-up drawings and installation diagram of an outswing single wood casement window w/sidelite, prepared by Hurricane Engineering & Testing, Inc., Test Report No. **HETI-00-1171**, dated 09/08/2000, signed and sealed by Hector Medina, P.E.
(Submitted under NOA No. 02-0503.07)

C. CALCULATIONS

1. Anchor verification calculations and structural analysis, complying with **FBC 5th Edition (2014)**, dated 06/13/16, prepared by Mathers Engineering Corporation, signed and sealed by William J. Mathers, P.E.
(Submitted under NOA No. 18-0307.06)
2. Glazing complies with **ASTM E1300-04**

Ishaq I. Chanda

Ishaq I. Chanda, P.E.
Product Control Unit Supervisor
NOA No. 24-0117.16
Expiration Date: February 27, 2028
Approval Date: February 15, 2024

Pinecrest Industries of Fla, Inc.

NOTICE OF ACCEPTANCE: EVIDENCE SUBMITTED

1. EVIDENCE SUBMITTED UNDER PREVIOUS NOA's (CONTINUED)

D. QUALITY ASSURANCE

1. Miami-Dade Department of Regulatory and Economic Resources (RER).

E. MATERIAL CERTIFICATIONS

1. Notice of Acceptance No. **16-0208.12** issued to **Polymer Extrusion Technology, Inc.** dba Glasslam for their "**Glasslam Safety-Plus II Glass Interlayer**" dated 06/16/16, expiring on 08/07/18.

F. STATEMENTS

1. Statement letter of conformance, complying with the **FBC 6th Edition (2017)**, dated March 5, 2018, issued by Mathers Engineering Corporation, signed and sealed by William J. Mathers, P.E.
(Submitted under NOA No. 18-0307.06)
2. Statement letter of no financial interest, dated March 5, 2018, issued by Wolters Engineering, Inc., signed and sealed by Scott Wolters, P.E.
(Submitted under NOA No. 18-0307.06)
3. Laboratory compliance letter for Test Reports No. **HETI-00-937** and **HETI-00-1171**, issued by Hurricane Engineering & Testing, Inc., dated 09/27/2000, signed and sealed by Hector Medina, P.E.
(Submitted under NOA No. 02-0503.07)

G. OTHERS

1. Notice of Acceptance No. **17-1213.12**, issued to Pinecrest Industries of Fla, Inc. for their Series "Palm Beach" Single Outswing Wood Casement Window w/Sidelite – L.M.I., approved on 05/04/17 and expiring on 02/27/23.

Ishaq I. Chanda

Ishaq I. Chanda, P.E.
Product Control Unit Supervisor
NOA No. 24-0117.16
Expiration Date: February 27, 2028
Approval Date: February 15, 2024

Pinecrest Industries of Fla, Inc.

NOTICE OF ACCEPTANCE: EVIDENCE SUBMITTED

2. EVIDENCE SUBMITTED under previous approval

A. DRAWINGS

1. Drawing No **PIWF-02-2013**, titled “Palm Beach Series - Outswing Single Wood Window Casement w/1 Side Lite”, sheets 1 through 5 of 5, dated March 2021, prepared by Mathers Engineering Corporation, signed and sealed by William J. Mathers, P.E.

B. TESTS

1. None.

C. CALCULATIONS

1. Anchor verification calculations and structural analysis, complying with **FBC 7th Edition (2020)**, dated 07/15/21, prepared by Mathers Engineering Corporation, signed and sealed by William J. Mathers, P.E.

D. QUALITY ASSURANCE

1. Miami-Dade Department of Regulatory and Economic Resources (RER)

E. MATERIAL CERTIFICATIONS

1. Notice of Acceptance No. **18-0619.01** issued to **Polymer Extrusion Technology, Inc.** dba Glasslam for their “**Glasslam Safety-Plus II Glass Interlayer**” dated 07/26/18, expiring on 08/07/23.

F. STATEMENTS

1. Statement letter of conformance, complying with the **FBC 7th Edition (2020)**, dated October 5, 2021, issued by Mathers Engineering Corporation, signed and sealed by William J. Mathers, P.E.
2. Statement letter of no financial interest, dated August 2, 2021, issued by Mathers Engineering Corporation, signed and sealed by William J. Mathers, P.E.

G. OTHERS

1. Notice of Acceptance No. **18-0307.06**, issued to Pinecrest Industries of Fla, Inc. for their Series “Palm Beach” Single Outswing Wood Casement Window w/Sidelite – L.M.I., approved on 04/26/18 and expiring on 02/27/23.

Ishaq I. Chanda

Ishaq I. Chanda, P.E.
Product Control Unit Supervisor
NOA No. 24-0117.16
Expiration Date: February 27, 2028
Approval Date: February 15, 2024

Pinecrest Industries of Fla, Inc.

NOTICE OF ACCEPTANCE: EVIDENCE SUBMITTED

3. EVIDENCE SUBMITTED under previous approval

A. DRAWINGS

1. Drawing No **PIWF-02-2013**, titled “Palm Beach Series - Outswing Single Wood Window Casement w/1 Side Lite”, sheets 1 through 5 of 5, dated March 2021, prepared by Mathers Engineering Corporation, signed and sealed by William J. Mathers, P.E.

B. TESTS

1. None.

C. CALCULATIONS (submitted under previous approval)

1. Anchor verification calculations and structural analysis, complying with FBC-2020 (7th Edition), prepared by Mathers Engineering Corp., dated 07/15/21, signed and sealed by William S. Mathers, P.E.

D. QUALITY ASSURANCE

1. Miami Dade Department of Regulatory and Economic Resources (RER).

E. MATERIAL CERTIFICATIONS

1. None.

F. STATEMENTS (submitted under previous approval)

1. Letter of conformance to FBC 2020 (7th edition), dated 07/15/21, prepared by Mathers Engineering Corp., signed and sealed by William S. Mathers, P.E.

G. OTHER

1. This NOA **renews NOA # 21-0927.05**, expiring 02/27/2028.

Ishaq I. Chanda

Ishaq I. Chanda, P.E.
Product Control Unit Supervisor
NOA No. 24-0117.16
Expiration Date: February 27, 2028
Approval Date: February 15, 2024

Pinecrest Industries of Fla, Inc.

NOTICE OF ACCEPTANCE: EVIDENCE SUBMITTED

4. New EVIDENCE SUBMITTED

A. DRAWINGS

1. Drawing No **PIWF-02-2013**, titled “Palm Beach Series - Outswing Single Wood Window Casement w/1 Side Lite”, sheets 1 through 5 of 5, dated March 2021, prepared by Mathers Engineering Corporation, signed and sealed by William J. Mathers, P.E.

B. TESTS

1. None.

C. CALCULATIONS (submitted under previous approval)

1. None.

D. QUALITY ASSURANCE

1. Miami Dade Department of Regulatory and Economic Resources (RER).

E. MATERIAL CERTIFICATIONS

1. None.

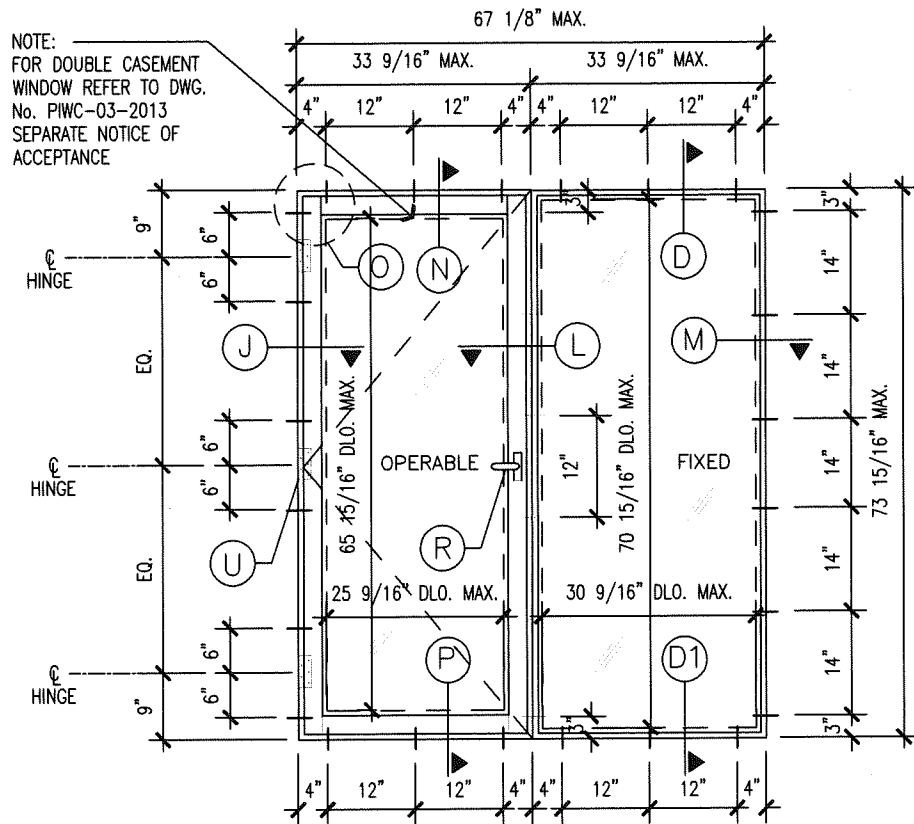
F. STATEMENTS

1. Letter of conformance to FBC 2023 (8th edition), dated 12/20/23, prepared by Mathers Engineering Corp., signed and sealed by William S. Mathers, P.E.

G. OTHER

1. This NOA revises NOA # **22-0719.05**, updates to FBC 2023, expiring 02/27/2028.

_____ *Ishaq I. Chanda* _____
Ishaq I. Chanda, P.E.
Product Control Unit Supervisor
NOA No. 24-0117.16
Expiration Date: February 27, 2028
Approval Date: February 15, 2024



5 PALM BEACH SERIES - OUTSWING SINGLE WOOD CASEMENT WINDOW W/1 SIDE LITE
SCALE: 1/2"=1'-0" X O OR O X

LOCATION	FASTENER TYPE, SPACING AND QUANTITY FOR PALM BEACH SERIES
SILL @ OPERABLE SIDE	USE (3) # 14 SMS WOOD SCREWS WITH 1 1/2" EMBEDMENT INTO WOOD BUCK AT 12" O.C. STARTING 4" FROM CORNER
HEADER @ OPERABLE SIDE	USE (3) # 14 SMS WOOD SCREWS WITH 1 1/2" EMBEDMENT INTO WOOD BUCK AT 12" O.C. STARTING 4" FROM CORNER
SIDELITE SILL AND HEADER	USE (3) # 14 SMS WOOD SCREWS WITH 1 1/2" EMBEDMENT INTO WOOD BUCK AT 12" O.C. STARTING 4" FROM CORNER
JAMB OPERABLE SIDE	USE (2) # 14 SMS WOOD SCREWS WITH 1 1/2" EMBEDMENT INTO WOOD BUCK 6" ABOVE AND BELOW EACH HINGE CENTER (TOTAL 6 SCREWS)
SIDELITE JAMB	USE (6) # 14 SMS WOOD SCREWS WITH 1 1/2" EMBEDMENT INTO WOOD BUCK AT 14" MAX. STARTING 3" FROM CORNERS
WINDOW ATTACHMENT TO MULLION	USE (6) # 8 X 2" WOOD SCREWS AT 12" OC STARTING 3" FROM CORNER

- NOTES:
- 1- THIS WINDOW SYSTEM IS IMPACT RESISTANT. HURRICANE PROTECTION IS NOT REQUIRED.
 - 2- PROVIDE 1/4" MAXIMUM SHIM SPACE.
 - 3- MATERIAL : MAHOGANY WOOD.
 - 4- GLAZING: SAFETY-PLUS II LAMINATED GLASS by GLASSLAM N.G.I., INC.
1/2" OVERALL THICKNESS CONSISTING OF:
3/16" ANNEALED GLASS +
0.10" POLYLAM POLYURETHANE LAMINATING POLYMER BY GLASSLAM +
3/16" ANNEALED GLASS.
 - 5- O/H: OPPOSITE HAND.
 - 6- WINDOW SYSTEM CAN BE FASTENED TO 2X WOOD BUCKS PER FASTENER SCHEDULE SHOWN IN THIS DRAWING.
 - 7- ATTACHMENT OF 2X WOOD BUCKS TO STRUCTURE SHALL BE DESIGNED BY A LICENSED ARCHITECT OR REGISTERED PROFESSIONAL ENGINEER.
 - 8- ALL 2X WOOD BUCKS PROVIDED BY OTHERS MUST BE VISUALLY GRADED SOUTHERN PINE NO. 3 (STUD). LUMBER SPECIES AND GRADES THAT ARE BETTER OR EQUAL ARE ACCEPTABLE.
 - 9- THIS WINDOW SYSTEM HAS BEEN DESIGNED AND TESTED IN ACCORDANCE WITH FLORIDA BUILDING CODE (FBC), INCLUDING HIGH VELOCITY HURRICANE ZONES (HVHZ).

PRODUCT REVISED
as complying with the Florida
Building Code
NOA-No. 24-0117.16
Expiration Date 02/27/2028
By Ishag I. Chande
Miami-Dade Product Control

ALL ELEVATIONS VIEWED
FROM EXTERIOR

DESIGN LOADS (PSF)
+50, -55
IMPACT RESISTANT

PRODUCT RENEWED
as complying with the Florida
Building Code
NOA-No. 22-0719.05
Expiration Date 02/27/2028
By Ishag I. Chande
Miami-Dade Product Control

PRODUCT REVISED
as complying with the Florida
Building Code
NOA-No. 21-0927.05
Expiration Date: 02/27/2023
By: Manuel Perez
Miami-Dade Product Control

PHONE: (772) 287-0825
2431 SE DIXIE HWY
STUART, FL 34988

MATHERS ENGINEERING CORPORATION
CIVIL - STRUCTURAL - LAND PLANNING

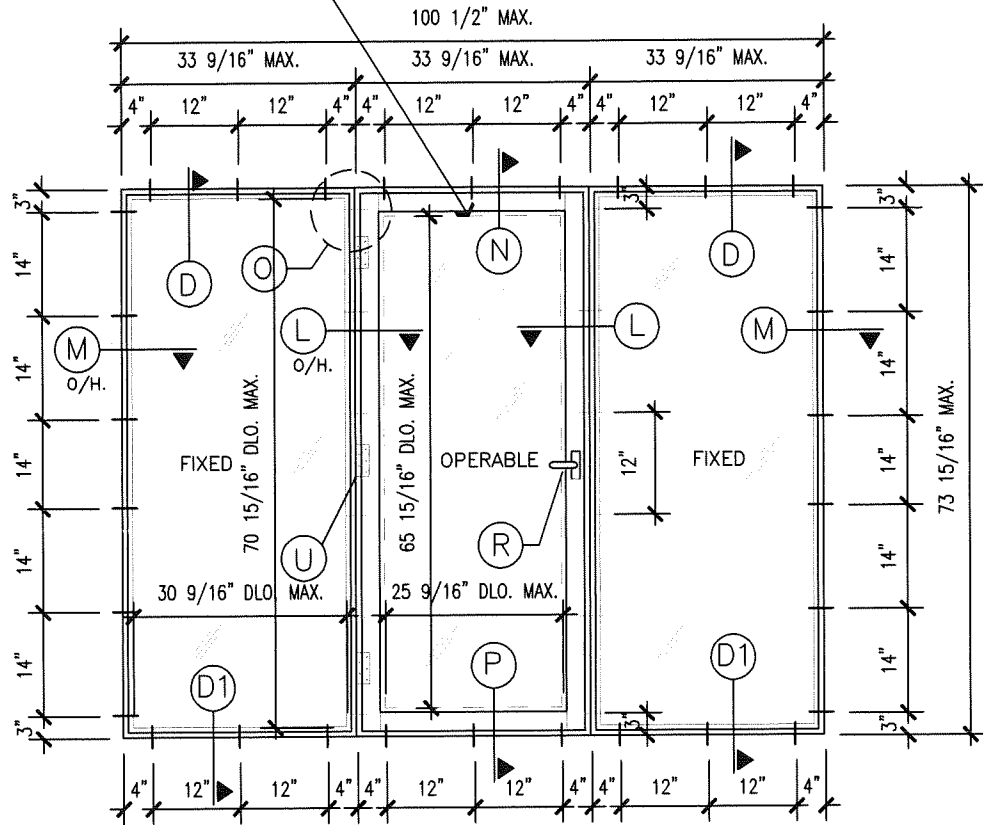
PROJECT
PINECREST INDUSTRIES OF FLA., INC.
7457 COMMERCIAL CIRCLE
FORT PIERCE, FL 34951

SHEET TITLE:
PALM BEACH SERIES
OUTSWING SINGLE WOOD WINDOW
CASEMENT W/1 SIDE LITE

DATE MARCH 2021
SCALE AS NOTED
DWN. BY MM CKD. BY JFV
JOB NO. 828-01
DRAWING NO.
PIWF-02-2013
1 OF 5

STATE OF
FLORIDA
PROFESSIONAL ENGINEER
WILLIAM J. MATHERS, PE
FL # 18658

NOTE:
FOR CASEMENT WINDOW
REFER TO DWG.
No. PIWC-03-2013
SEPARATE NOTICE OF
ACCEPTANCE



NOTES:

- 1- THIS WINDOW SYSTEM IS IMPACT RESISTANT. HURRICANE PROTECTION IS NOT REQUIRED.
- 2- PROVIDE 1/4" MAXIMUM SHIM SPACE.
- 3- MATERIAL : MAHOGANY WOOD.
- 4- GLAZING: SAFETY-PLUS II LAMINATED GLASS by GLASSLAM N.G.I., INC.
1/2" OVERALL THICKNESS CONSISTING OF:
3/16" ANNEALED GLASS +
0.10" POLYLAM POLYURETHANE LAMINATING POLYMER BY GLASSLAM +
3/16" ANNEALED GLASS.
- 5- O/H: OPPOSITE HAND.
- 6- WINDOW SYSTEM CAN BE FASTENED TO 2X WOOD BUCKS PER FASTENER
SCHEDULE SHOWN IN THIS DRAWING.
- 7- ATTACHMENT OF 2X WOOD BUCKS TO STRUCTURE SHALL BE
DESIGNED BY A LICENSED ARCHITECT OR REGISTERED PROFESSIONAL ENGINEER.
- 8- ALL 2X WOOD BUCKS PROVIDED BY OTHERS MUST BE VISUALLY GRADED
SOUTHERN PINE NO. 3 (STUD). LUMBER SPECIES AND GRADES THAT ARE
BETTER OR EQUAL ARE ACCEPTABLE.
- 9- THIS WINDOW SYSTEM HAS BEEN DESIGNED AND TESTED IN ACCORDANCE WITH FLORIDA
BUILDING CODE (FBC), INCLUDING HIGH VELOCITY HURRICANE ZONES (HVHZ).

PRODUCT REVISED
as complying with the Florida
Building Code
NOA-No. 24-0117.16
Expiration Date 02/27/2028
By Ishag I. Chande
Miami-Dade Product Control

5A PALM BEACH SERIES - OUTSWING SINGLE WOOD CASEMENT WINDOW W/2 SIDE LITES
SCALE: 1/2"=1'-0"
O X O

LOCATION	FASTENER TYPE, SPACING AND QUANTITY FOR PALM BEACH SERIES
SILL @ OPERABLE SIDE	USE (3) # 14 SMS WOOD SCREWS WITH 1 1/2" EMBEDMENT INTO WOOD BUCK AT 12" O.C. STARTING 4" FROM CORNER
HEADER @ OPERABLE SIDE	USE (3) # 14 SMS WOOD SCREWS WITH 1 1/2" EMBEDMENT INTO WOOD BUCK AT 12" O.C. STARTING 4" FROM CORNER
SIDELITE SILL AND HEADER	USE (6) # 14 SMS WOOD SCREWS WITH 1 1/2" EMBEDMENT INTO WOOD BUCK AT 12" O.C. STARTING 4" FROM CORNER
SIDELITE JAMB	USE (6) # 14 SMS WOOD SCREWS WITH 1 1/2" EMBEDMENT INTO WOOD BUCK AT 14" MAX. STARTING 3" FROM CORNERS
WINDOW ATTACHMENT TO MULLION	USE (6) # 8 X 2" WOOD SCREWS AT 12" OC STARTING 3" FROM CORNER

ALL ELEVATIONS VIEWED
FROM EXTERIOR

DESIGN LOADS (PSF)
+50, -55
IMPACT RESISTANT

PRODUCT RENEWED
as complying with the Florida
Building Code
NOA-No. 22-0719.05
Expiration Date 02/27/2028
By Ishag I. Chande
Miami-Dade Product Control

PRODUCT REVISED
as complying with the Florida
Building Code
NOA-No. 21-0927.05
Expiration Date: 02/27/2023
By: Manuel Perez
Miami-Dade Product Control

PHONE: (772) 287-0825
EB 0004486



2431 SE DOKE HWY
STUART, FL 34986

MATHERS ENGINEERING CORPORATION
CIVIL, STRUCTURAL, LAND PLANNING

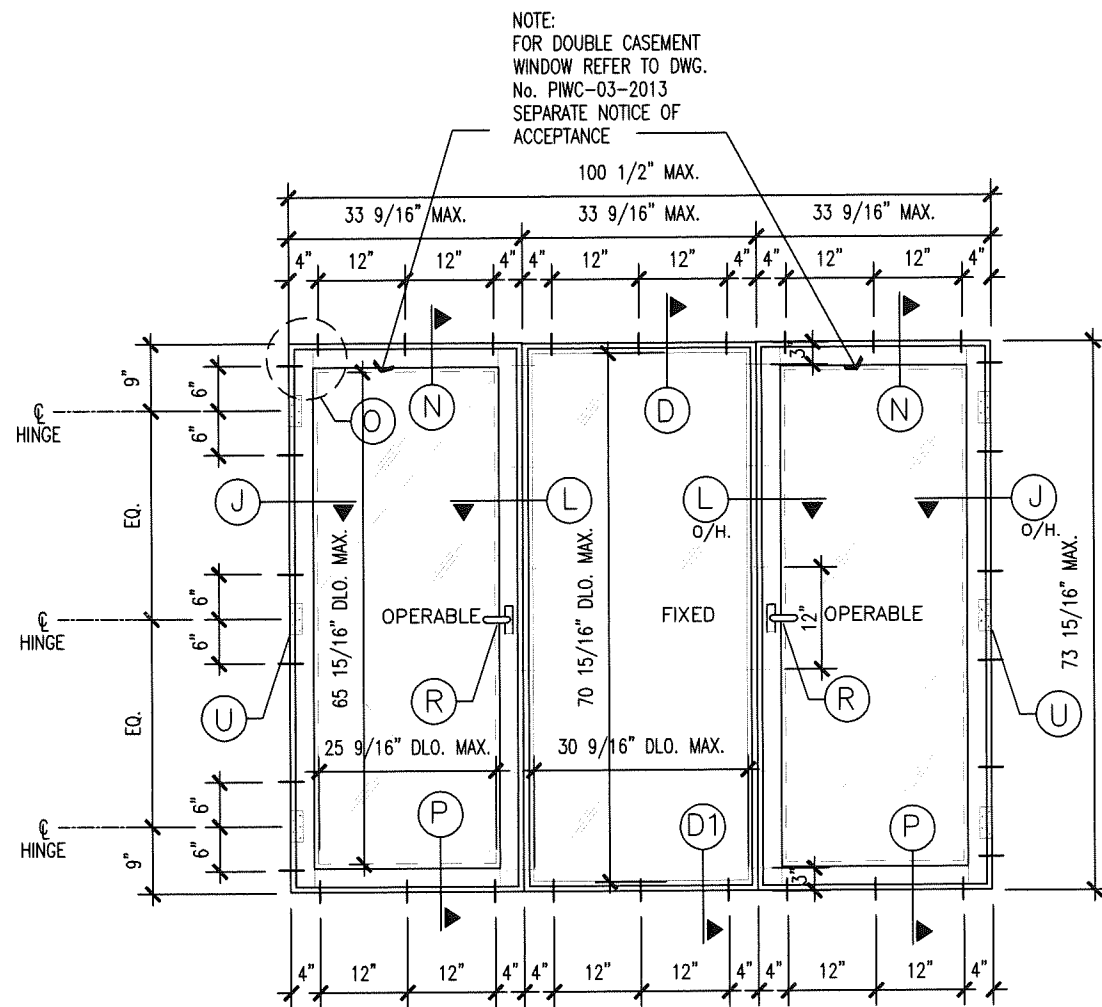
WILLIAM J. MATHERS, PE
FL # 19859K

STATE OF
FLORIDA
PROFESSIONAL ENGINEER

PROJECT: PINECREST INDUSTRIES OF FLA., INC.
7457 COMMERCIAL CIRCLE
FORT PIERCE, FL 34951

SHEET TITLE: PALM BEACH SERIES
OUTSWING SINGLE WOOD WINDOW
CASEMENT W/2 SIDE LITES

DATE: MARCH 2021
SCALE: AS NOTED
DWN. BY: MM CKD. BY: JFV
JOB NO. 828-01
DRAWING NO. PIWF-02-2013
2 OF 5



5B PALM BEACH SERIES - OUTSWING SINGLE WOOD CASEMENT WINDOW W/CENTER SIDE LITE
SCALE: 1/2"=1'-0" X O X

LOCATION	FASTENER TYPE, SPACING AND QUANTITY FOR PALM BEACH SERIES
SILL @ OPERABLE SIDE	USE (3) # 14 SMS WOOD SCREWS WITH 1 1/2" EMBEDMENT INTO WOOD BUCK AT 12" O.C. STARTING 4" FROM CORNER (TOTAL 6 SCREWS)
HEADER @ OPERABLE SIDE	USE (3) # 14 SMS WOOD SCREWS WITH 1 1/2" EMBEDMENT INTO WOOD BUCK AT 12" O.C. STARTING 4" FROM CORNER (TOTAL 6 SCREWS)
SIDELITE SILL AND HEADER	USE (3) # 14 SMS WOOD SCREWS WITH 1 1/2" EMBEDMENT INTO WOOD BUCK AT 12" O.C. STARTING 4" FROM CORNER
JAMB OPERABLE SIDE	USE (2) # 14 SMS WOOD SCREWS WITH 1 1/2" EMBEDMENT INTO WOOD BUCK 6" ABOVE AND BELOW EACH HINGE CENTER (TOTAL 6 SCREWS)
WINDOW ATTACHMENT TO MULLION	USE (6) # 8 X 2" WOOD SCREWS AT 12" OC STARTING 3" FROM CORNER

NOTES:

- 1- THIS WINDOW SYSTEM IS IMPACT RESISTANT. HURRICANE PROTECTION IS NOT REQUIRED.
- 2- PROVIDE 1/4" MAXIMUM SHIM SPACE.
- 3- MATERIAL : MAHOGANY WOOD.
- 4- GLAZING: SAFETY-PLUS II LAMINATED GLASS by GLASSLAM N.G.I., INC.
1/2" OVERALL THICKNESS CONSISTING OF:
3/16" ANNEALED GLASS +
0.10" POLYLAM POLYURETHANE LAMINATING POLYMER BY GLASSLAM +
3/16" ANNEALED GLASS.
- 5- O/H: OPPOSITE HAND.
- 6- WINDOW SYSTEM CAN BE FASTENED TO 2X WOOD BUCKS PER FASTENER SCHEDULE SHOWN IN THIS DRAWING.
- 7- ATTACHMENT OF 2X WOOD BUCKS TO STRUCTURE SHALL BE DESIGNED BY A LICENSED ARCHITECT OR REGISTERED PROFESSIONAL ENGINEER.
- 8- ALL 2X WOOD BUCKS PROVIDED BY OTHERS MUST BE VISUALLY GRADED SOUTHERN PINE NO. 3 (STUD). LUMBER SPECIES AND GRADES THAT ARE BETTER OR EQUAL ARE ACCEPTABLE.
- 9- THIS WINDOW SYSTEM HAS BEEN DESIGNED AND TESTED IN ACCORDANCE WITH FLORIDA BUILDING CODE (FBC), INCLUDING HIGH VELOCITY HURRICANE ZONES (HVHZ).

PRODUCT REVISED
as complying with the Florida
Building Code
NOA-No. 24-0117.16

Expiration Date 02/27/2028

By Ishaq I. Chank
Miami-Dade Product Control

ALL ELEVATIONS VIEWED
FROM EXTERIOR

DESIGN LOADS (PSF)
+50, -55
IMPACT RESISTANT

PRODUCT RENEWED
as complying with the Florida
Building Code
NOA-No. 22-0719.05

Expiration Date 02/27/2028

By Ishaq I. Chank
Miami-Dade Product Control

PRODUCT REVISED
as complying with the Florida
Building Code
NOA-No. 21-0927.05
Expiration Date: 02/27/2023

By Manuel Perez
Miami-Dade Product Control

PHONE: (772) 287-0825
2431 SE DIXIE HWY
STUART, FL 34988



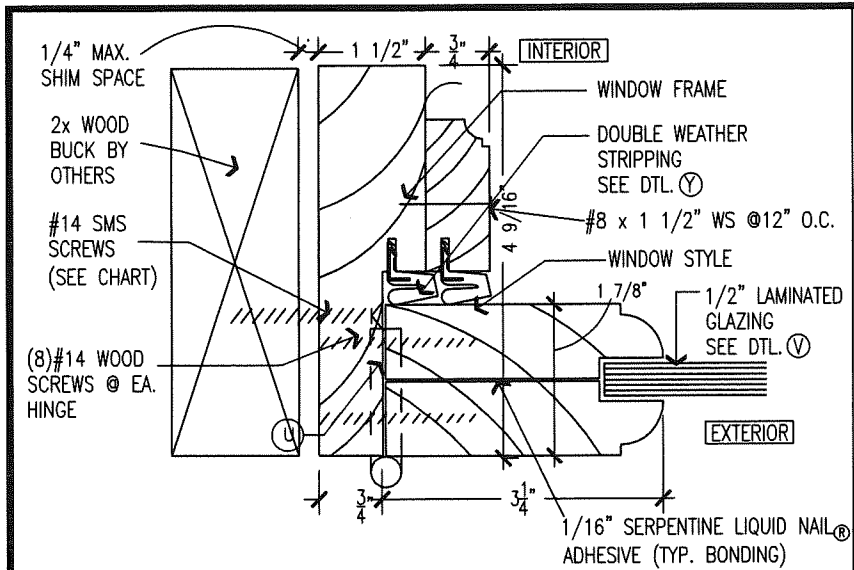
ES 0004408

MATHERS ENGINEERING CORPORATION
CIVIL - STRUCTURAL - LAND PLANNING

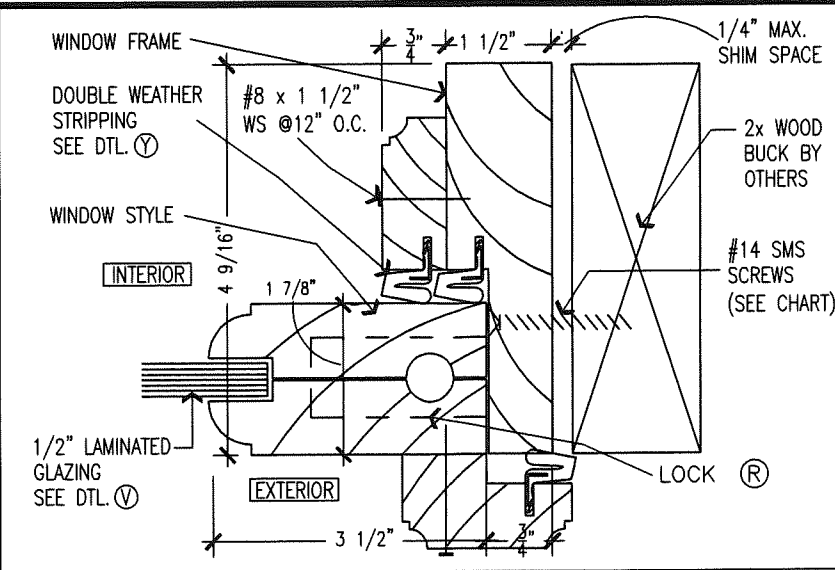
PROJECT: PINECREST INDUSTRIES OF FLA., INC.
7457 COMMERCIAL CIRCLE
FORT PIERCE, FL 34951

SHEET TITLE: PALM BEACH SERIES
OUTSWING SINGLE WOOD WINDOW
CASEMENT W/CENTER SIDE LITE

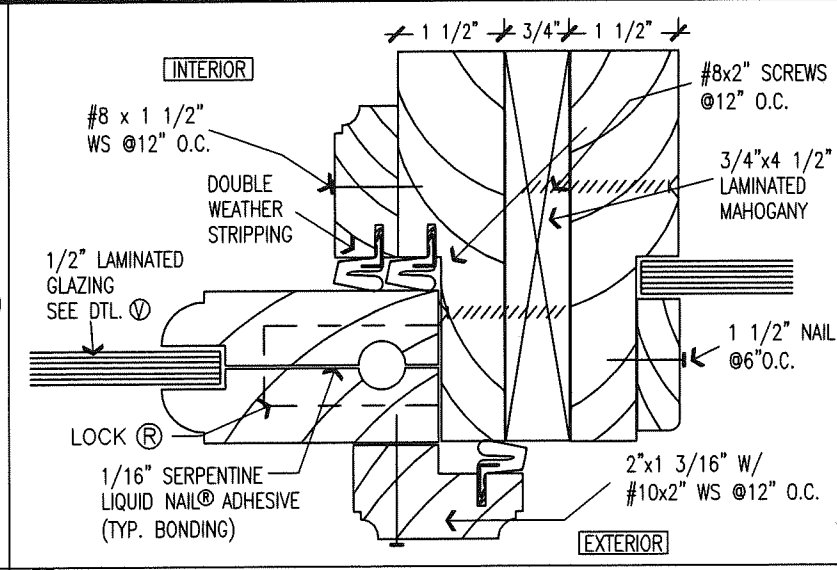
DATE: MARCH 2021
SCALE: AS NOTED
DWN. BY: MM CKD. BY: JFV
JOB NO. 826-01
DRAWING NO.
PIWF-02-2013
3 OF 5



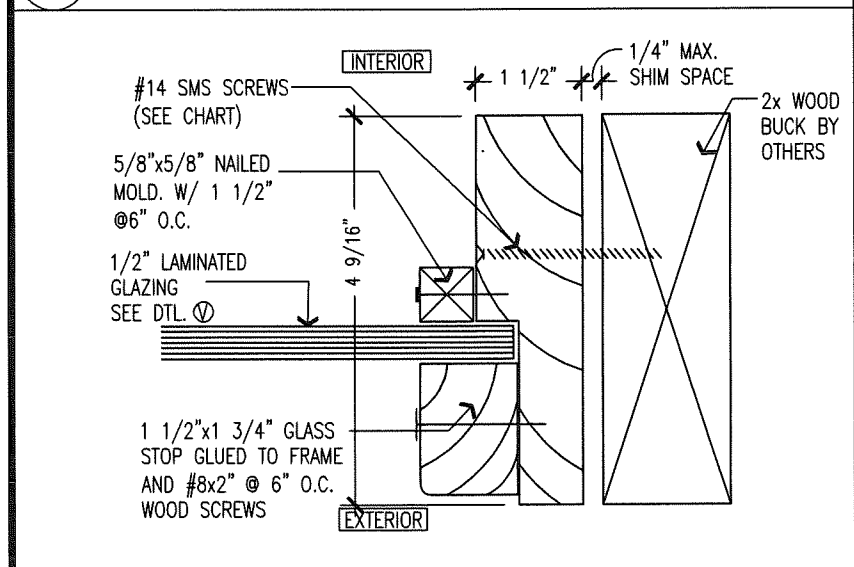
J WINDOW JAMB @ HINGE SIDE
SCALE: 6"=1'-0"



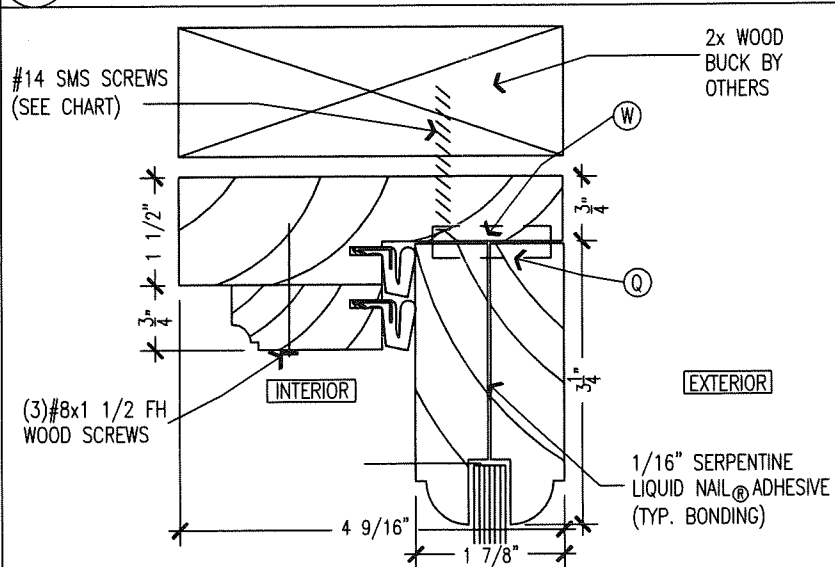
J1 WINDOW JAMB @ LOCK SIDE
SCALE: 6"=1'-0"



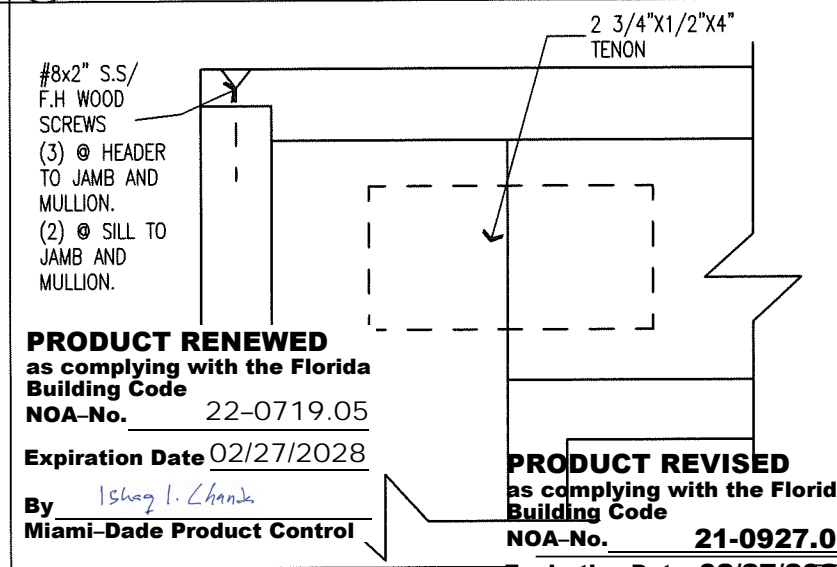
L MULLION DETAIL
SCALE: 6"=1'-0"



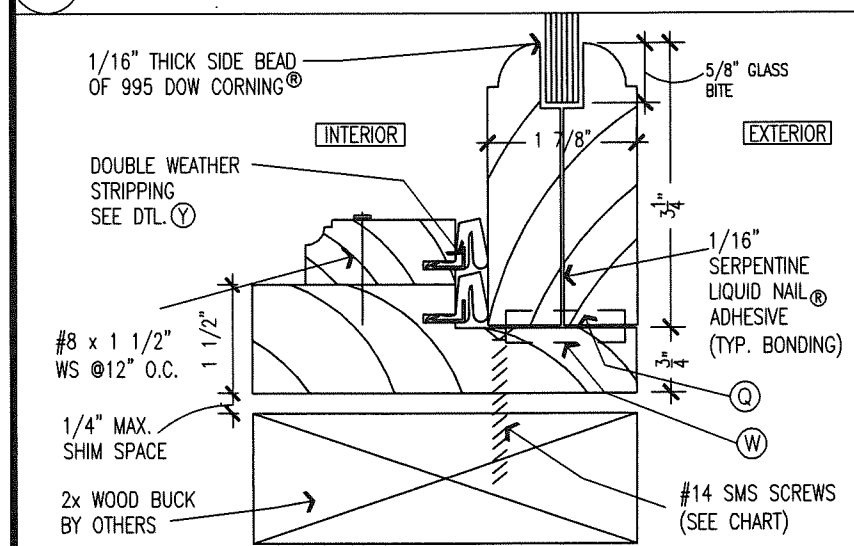
M FIXED PANEL JAMB
SCALE: 6"=1'-0"



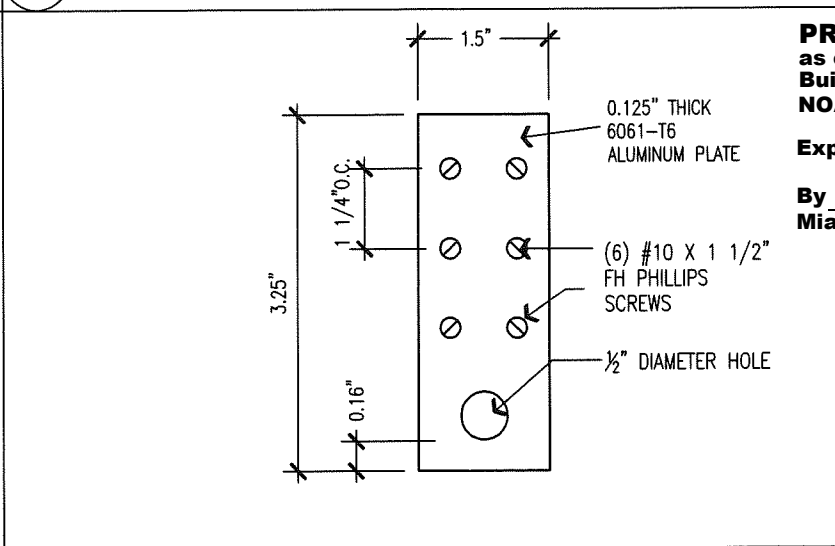
N TYP. WINDOW HEAD
SCALE: 6"=1'-0"



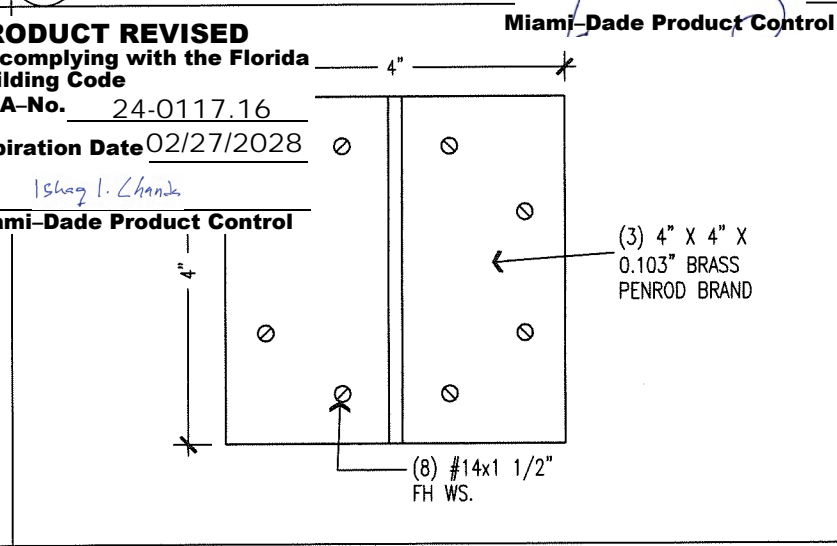
O SASH CORNER ATTACHMENT
SCALE: 6"=1'-0"



P TYP. WINDOW SILL
SCALE: 6"=1'-0"



Q SASH PLATE
SCALE: 6"=1'-0"



U HINGES (3 PER PANEL)
SCALE: 6"=1'-0"

PHONE: (772) 287-0025
2431 SE DIXIE HWY
STUART, FL 34988

MATTHEWS ENGINEERING CORPORATION
CIVIL - STRUCTURAL - LAND PLANNING

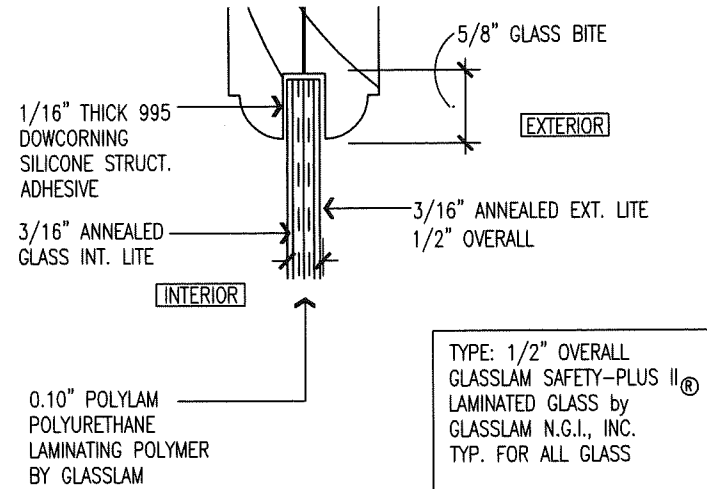
ED 0004458

2021 FLORIDA PROFESSIONAL ENGINEER
WILLIAM J. MATTHEWS, P.E.
FL # 19868

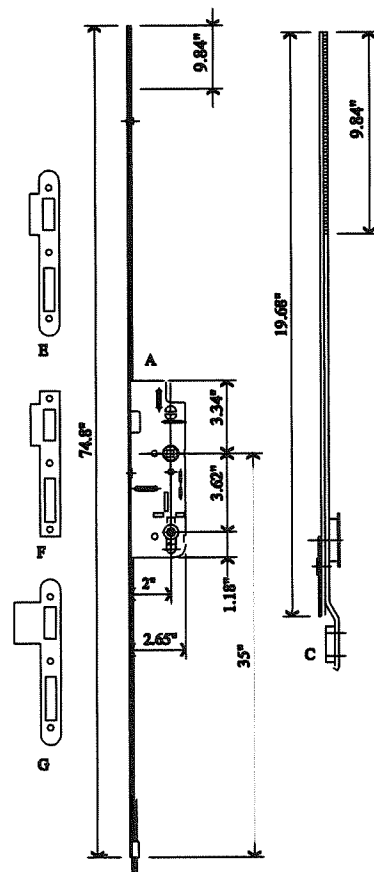
PINECREST INDUSTRIES OF FLA., INC.
7457 COMMERCIAL CIRCLE
FORT PIERCE, FL 34951

SHEET TITLE: **PALM BEACH SERIES WINDOW DETAILS**

DATE: **MARCH 2021**
SCALE: **AS NOTED**
DWN. BY: **MM** CKD. BY: **JFV**
JOB NO. **826-01**
DRAWING NO. **PIWF-02-2013**
4 OF 5

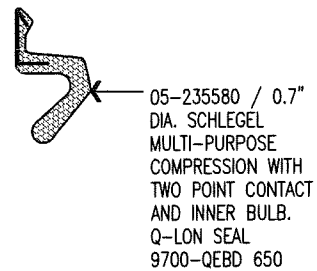


V TYP. GLAZING DETAIL
SCALE: 6"=1'-0"

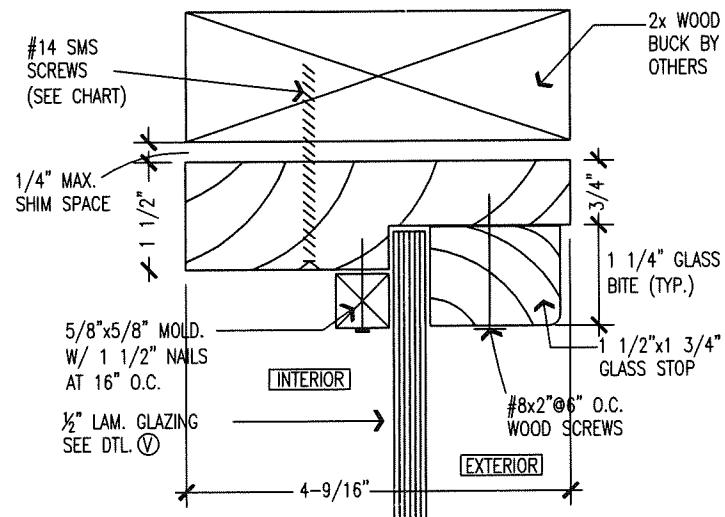


US CREMONA G.U. HARDWARE 2" G-17567
19-0-3 GU-6-25476-50 AT ACTIVE
The lock is held in place using (11) #8 x 2" PFHS

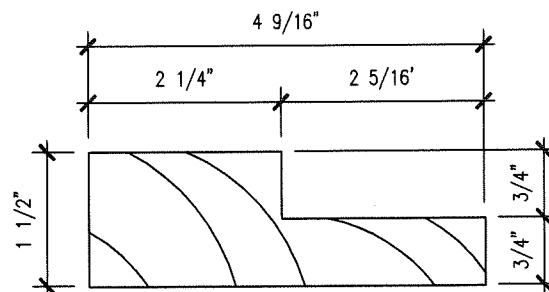
R 3 - POINTS LOCK
ALL DIMENSIONS IN INCHES



Y TYP. WEATHER STRIP
FULL SCALE

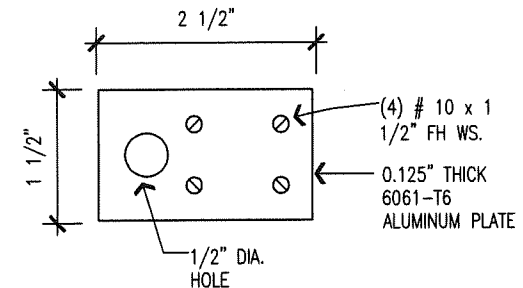


D FIXED PANEL HEAD
SCALE: 6"=1'-0"

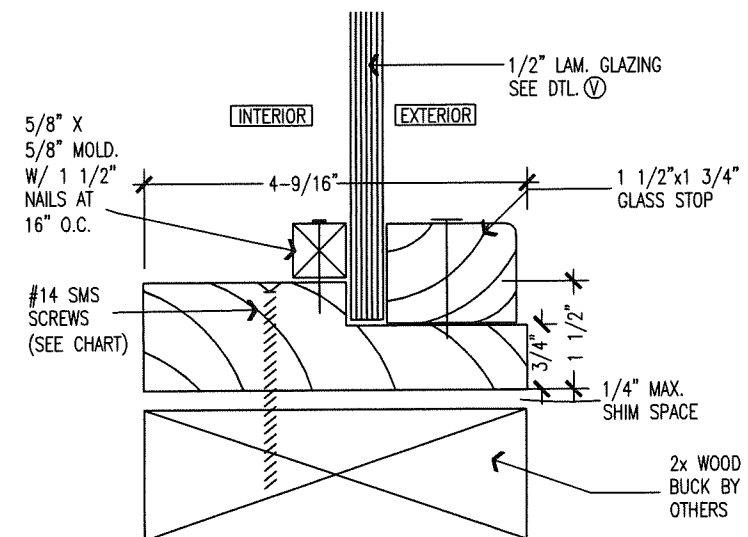


Z TYPICAL FRAME PROFILE
SCALE: 6"=1'-0"

PRODUCT REVISED
as complying with the Florida
Building Code
NOA-No. 24-0117.16
Expiration Date 02/27/2028
By *Ishaq I. Chande*
Miami-Dade Product Control



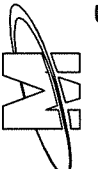
W FRAME PLATE
SCALE: 6"=1'-0"



D1 FIXED PANEL
SCALE: 6"=1'-0"

PRODUCT RENEWED
as complying with the Florida
Building Code
NOA-No. 22-0719.05
Expiration Date 02/27/2028
By *Ishaq I. Chande*
Miami-Dade Product Control

PRODUCT REVISED
as complying with the Florida
Building Code
NOA-No. 21-0927.05
Expiration Date: 02/27/2023
By *Manuel Perez*
Miami-Dade Product Control

PHONE: (772) 287-0025	
2431 SE DOKE HWY STUART, FL 34986	
 MATHERS ENGINEERING CORPORATION CIVIL - STRUCTURAL - LAND PLANNING	
WILLIAM J. MATHERS, PE FL # 19850 STATE OF FLORIDA PROFESSIONAL ENGINEER	
PROJECT: PINECREST INDUSTRIES OF FLA., INC. 7457 COMMERCIAL CIRCLE FORT PIERCE, FL 34951	SHEET TITLE: PALM BEACH SERIES WINDOW DETAILS
DATE: MARCH 2021	SCALE: AS NOTED
DWN. BY: MM	CKD. BY: JFV
JOB NO. 826-01	DRAWING NO.
PIWF-02-2013 5 OF 5	