



DEPARTMENT OF REGULATORY AND ECONOMIC RESOURCES (RER)  
BOARD AND CODE ADMINISTRATION DIVISION

**NOTICE OF ACCEPTANCE (NOA)**

MIAMI-DADE COUNTY  
PRODUCT CONTROL SECTION

11805 SW 26 Street, Room 208  
Miami, Florida 33175-2474  
T (786) 315-2590 F (786) 315-2599

[www.miamidade.gov/economy](http://www.miamidade.gov/economy)

**Miami Rolling Doors, Corp.**  
276 W 24 Street  
Hialeah, FL 33010

**SCOPE:**

This NOA is being issued under the applicable rules and regulations governing the use of construction materials. The documentation submitted has been reviewed and accepted by Miami-Dade County RER-Product Control Section to be used in Miami Dade County and other areas where allowed by the Authority Having Jurisdiction (AHJ).

This NOA shall not be valid after the expiration date stated below. The Miami-Dade County Product Control Section (In Miami Dade County) and/or the AHJ (in areas other than Miami Dade County) reserve the right to have this product or material tested for quality assurance purposes. If this product or material fails to perform in the accepted manner, the manufacturer will incur the expense of such testing and the AHJ may immediately revoke, modify, or suspend the use of such product or material within their jurisdiction. RER reserves the right to revoke this acceptance, if it is determined by Miami-Dade County Product Control Section that this product or material fails to meet the requirements of the applicable building code.

This product is approved as described herein and has been designed to comply with the Florida Building Code, including the High Velocity Hurricane Zone.

**DESCRIPTION: Model MRD-65 Steel Rolling Door up to 24'- 6 5/8" Wide**

**APPROVAL DOCUMENT:** Drawing No. **AD10-25**, titled "Model MRD-65 Rolling Door (LMI)", sheets 1 through 4 of 4, dated 09/14/2010, with revision 5 dated 02/20/2024, prepared by MCY Engineering, Inc., signed and sealed by Yiping Wang, P.E., bearing the Miami-Dade County Product Control revision stamp with the Notice of Acceptance number and expiration date by the Miami-Dade County Product Control Section.

**MISSILE IMPACT RATING: Large and Small Missile Impact Resistant**

**LABELING:** A permanent label with the manufacturer's name or logo, manufacturing address, model/series number, the positive and negative design pressure rating, indicate impact rated if applicable, installation instruction drawing reference number, approval number (NOA), the applicable test standards, and the statement reading 'Miami-Dade County Product Control Approved' is to be located on the door's side track, bottom angle, or inner surface of a panel.

**RENEWAL** of this NOA shall be considered after a renewal application has been filed and there has been no change in the applicable building code negatively affecting the performance of this product.

**TERMINATION** of this NOA will occur after the expiration date or if there has been a revision or change in the materials, use, and/or manufacture of the product or process. Misuse of this NOA as an endorsement of any product, for sales, advertising or any other purposes shall automatically terminate this NOA. Failure to comply with any section of this NOA shall be cause for termination and removal of NOA.

**ADVERTISEMENT:** The NOA number preceded by the words Miami-Dade County, Florida, and followed by the expiration date may be displayed in advertising literature. If any portion of the NOA is displayed, then it shall be done in its entirety.

**INSPECTION:** A copy of this entire NOA shall be provided to the user by the manufacturer or its distributors and shall be available for inspection at the job site at the request of the Building Official.

This NOA revises NOA # **22-0602.05** and consists of this page 1 and evidence pages E-1 and E-2, as well as approval document mentioned above.

The submitted documentation was reviewed by **Sifang Zhao, P.E.**



*S.Z.*  
04/04/2024

NOA No. 24-0221.06  
Expiration Date: December 30, 2025  
Approval Date: April 04, 2024

**NOTICE OF ACCEPTANCE: EVIDENCE SUBMITTED**

**1. Evidence submitted under previous NOAs**

**A. DRAWINGS “Submitted under NOA #15-0731.06”**

1. Drawing No. **AD10-25**, titled “Model MRD-65 Rolling Door (LMI)”, sheets 1 through 4 of 4, dated 09/14/2010, with revision 2 dated 06/26/2015, prepared by MCY Engineering, Inc, signed and sealed by Yiping Wang, P.E.

**B. TESTS “Submitted under NOA # 10-0928.08”**

1. Test reports on 1) Uniform Static Air Pressure Test, Loading per FBC, TAS 202-94  
2) Large Missile Impact Test per FBC, TAS 201-94  
3) Cyclic Wind Pressure Loading per FBC, TAS 203-94  
4) Forced Entry Test, per FBC 2411 3.2.1, TAS 202-94  
5) Tensile Test per ASTM A370-05,  
along with installation diagram of Series MRD-65 Garage Doors, prepared by Fenestration Testing Laboratory, Inc, Test Report No. **FTL-6223**, dated 08/31/2010, signed and sealed by Jorge A. Causo, P.E.

**C. CALCULATIONS “Submitted under NOA #15-0731.06”**

1. Anchor verification calculations and structural analysis prepared by MCY Engineering, Inc, dated 07/15/2015, signed and sealed by Yiping Wang, P.E.

**“Submitted under NOA # 10-0928.08”**

2. Anchor verification calculations and structural analysis, complying with FBC-2007, prepared by MCY Engineering, Inc, dated 09/23/2010, signed and sealed by Yiping Wang, P.E.

**D. QUALITY ASSURANCE**

1. Miami-Dade Department of Regulatory and Economic Resources (RER)

**E. MATERIAL CERTIFICATIONS**

1. None.

**F. STATEMENTS “Submitted under NOA #15-0731.06”**

1. Statement letter of code conformance to the 5<sup>th</sup> edition (2014) FBC issued by MCY Engineering, Inc, dated 07/15/2015, signed and sealed by Yiping Wang, P.E.
2. Statement letter of no financial interest issued by MCY Engineering, Inc, dated 07/15/2015, signed and sealed by Yiping Wang, P.E.



---

Sifang Zhao, P.E.  
Product Control Examiner  
NOA No. 24-0221.06  
Expiration Date: December 30, 2025  
Approval Date: April 04, 2024

**NOTICE OF ACCEPTANCE: EVIDENCE SUBMITTED**

**2. Submitted under NOA # 17-0725.14 and new evidence**

**A. DRAWINGS**

1. Drawing No. **AD10-25**, titled “Model MRD-65 Rolling Door (LMI)”, sheets 1 through 4 of 4, dated 09/14/2010, with revision 5 dated 02/20/2024, prepared by MCY Engineering, Inc, signed and sealed by Yiping Wang, P.E.

**B. TESTS**

1. None.

**C. CALCULATIONS**

1. None.

**D. QUALITY ASSURANCE**

1. Miami-Dade Department of Regulatory and Economic Resources (RER).

**E. MATERIAL CERTIFICATIONS**

1. None.

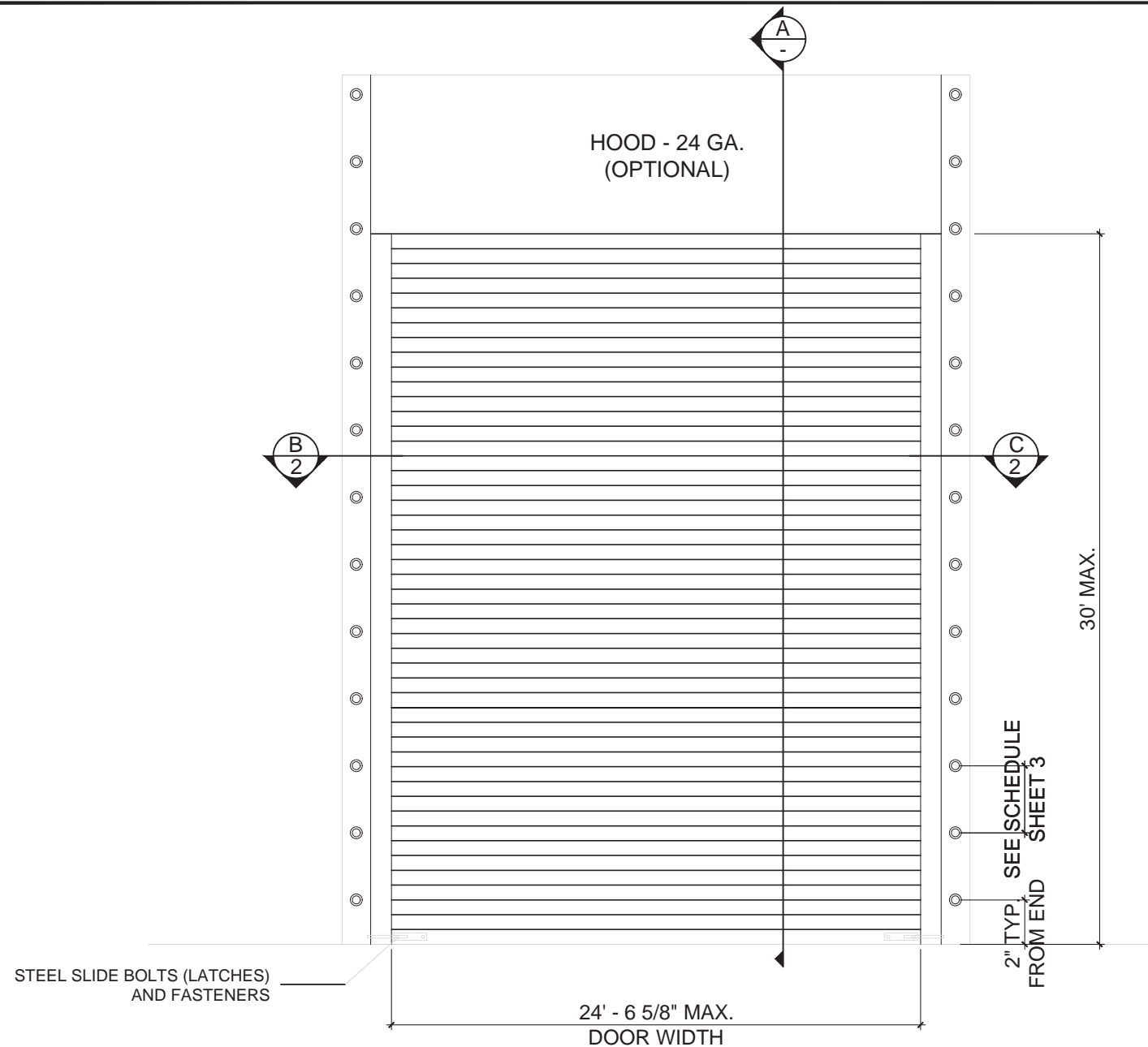
**F. STATEMENTS**

1. Drawing statement of code conformance to the 8<sup>th</sup> Edition (2023) of the FBC, issued by MCY Engineering, Inc, dated 02/20/2024, signed and sealed by Yiping Wang, P.E.
2. Statement letter of code conformance to the 8<sup>th</sup> Edition (2023) FBC and of no financial interest issued by MCY Engineering, Inc, dated 02/20/2024, signed and sealed by Yiping Wang, P.E.



---

**Sifang Zhao, P.E.**  
**Product Control Examiner**  
**NOA No. 24-0221.06**  
**Expiration Date: December 30, 2025**  
**Approval Date: April 04, 2024**



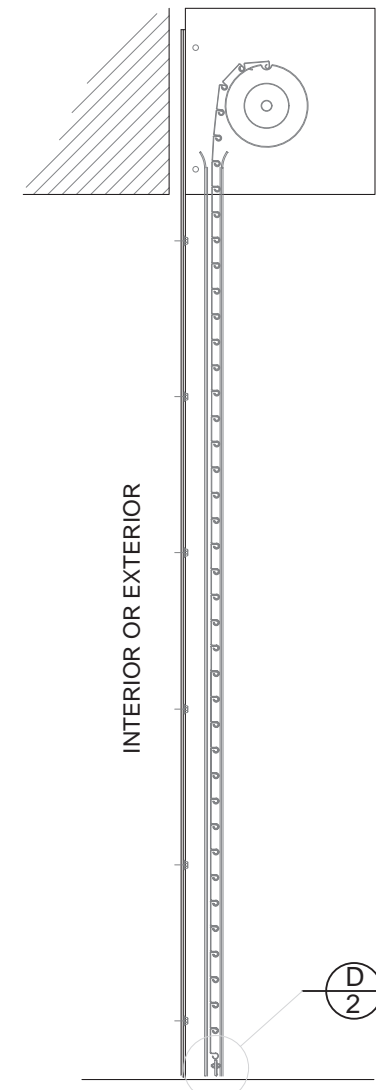
STEEL SLIDE BOLTS (LATCHES) AND FASTENERS

24' - 6 5/8" MAX. DOOR WIDTH

2" TYP. SEE SCHEDULE FROM END SHEET 3

30' MAX.

HOOD - 24 GA. (OPTIONAL)



INTERIOR OR EXTERIOR

SECTION A

DESIGN LOADS  
+ 65 PSF  
- 65 PSF

**GENERAL NOTES:**

- THIS PRODUCT HAS BEEN DESIGNED AND TESTED TO COMPLY WITH THE REQUIREMENTS OF THE 8TH EDITION FLORIDA BUILDING CODE (2023) INCLUDING HIGH VELOCITY HURRICANE ZONE (HVHZ).
- THE ROLLING UP DOOR HAVE BEEN TESTED AS PER THE 8TH EDITION FLORIDA BUILDING CODE (2023) TAS 201, 202 AND 203 FOR LARGE MISSILE IMPACT. FORCE ENTRY RESISTANCE TEST PER AAMA 1303.5 IN ACCORDANCE WITH THE 8TH EDITION FLORIDA BUILDING CODE (2023).
- DOOR IMPACTED ON BOTH SIDES AND MAY BE INSTALLED ON THE INSIDE OR OUTSIDE OF AN EXTERIOR WALL. THE SLATS MAY BE INSTALLED CONCAVE SIDE FACING OUTSIDE OR INSIDE OF BUILDING
- DESIGN LOAD SHALL BE DETERMINED BASED ON BASIC WIND SPEED, BUILDING HEIGHT AND WIND ZONE USING APPLICABLE ASCE 7 STANDARD

- HOOD TO BE 24 GA. ASTM A653 DESIGNATION G - 90 FINISH TYPE COATING.
- ANCHORS SHALL BE AS LISTED, SPACED AS SHOWN ON DETAILS. ANCHORS EMBEDMENT TO BASE MATERIAL SHALL BE BEYOND WALL DRESSING OR STUCCO.
- ANCHORING OR LOADING CONDITIONS NOT SHOWN IN THESE DETAILS ARE NOT PART OF THIS APPROVAL.
- MATERIALS INCLUDING BUT NOT LIMITED TO STEEL / METAL SCREWS THAT COME INTO CONTACT WITH OTHER DISSIMILAR MATERIALS SHALL MEET THE REQUIREMENTS OF THE 8TH EDITION FLORIDA BUILDING CODE (2023) SECTION AS APPLICABLE.
- IT SHALL BE THE RESPONSIBILITY OF THE CONTRACTOR TO VERIFY THAT THE EXISTING STRUCTURE IS DESIGNED TO SUPPORT Vx & Vy FORCES AT BOTH JAMBS.
- ULTIMATE LOAD OBTAINED FROM ASCE 7-22, MULTIPLY BY 0.6 SHALL BE LESS THAN OR EQUAL TO MAX. DESIGN LOAD IN THIS DOCUMENT. THE DESIGN LOADS SHOWN IN THIS DOCUMENT ARE ALLOWABLE DESIGN LOADS.

**TYPICAL ELEVATION**

**PRODUCT REVISED**  
as complying with the Florida Building Code  
NOA-No. 24-0221.06  
Expiration Date 12/30/2025  
By *[Signature]*  
Miami-Dade Product Control  
MIAMI-DADE COUNTY

YIANG WANG, P.E.  
FLORIDA REGISTRATION  
#55983  
C.A.N. #558877  
February 20th, 2024

NO.	DATE	DESCRIPTION
15	12/20/2024	UPDATE FBC 2023

**MCY ENGINEERING, INC.**  
GLAZING CONSULTANTS  
12781 MIRAMAR PARKWAY #301 P: 305.271.0117  
MIRAMAR FL 33027  
www.MCYEngineering.com  
MCY@mcyengineering.com

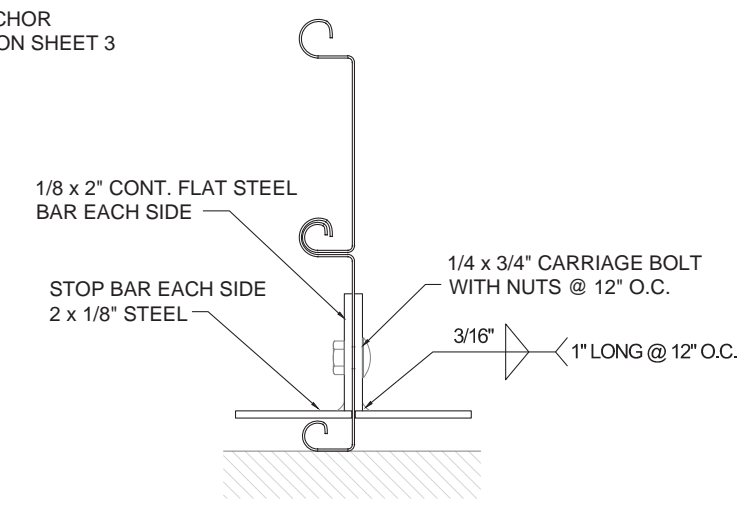
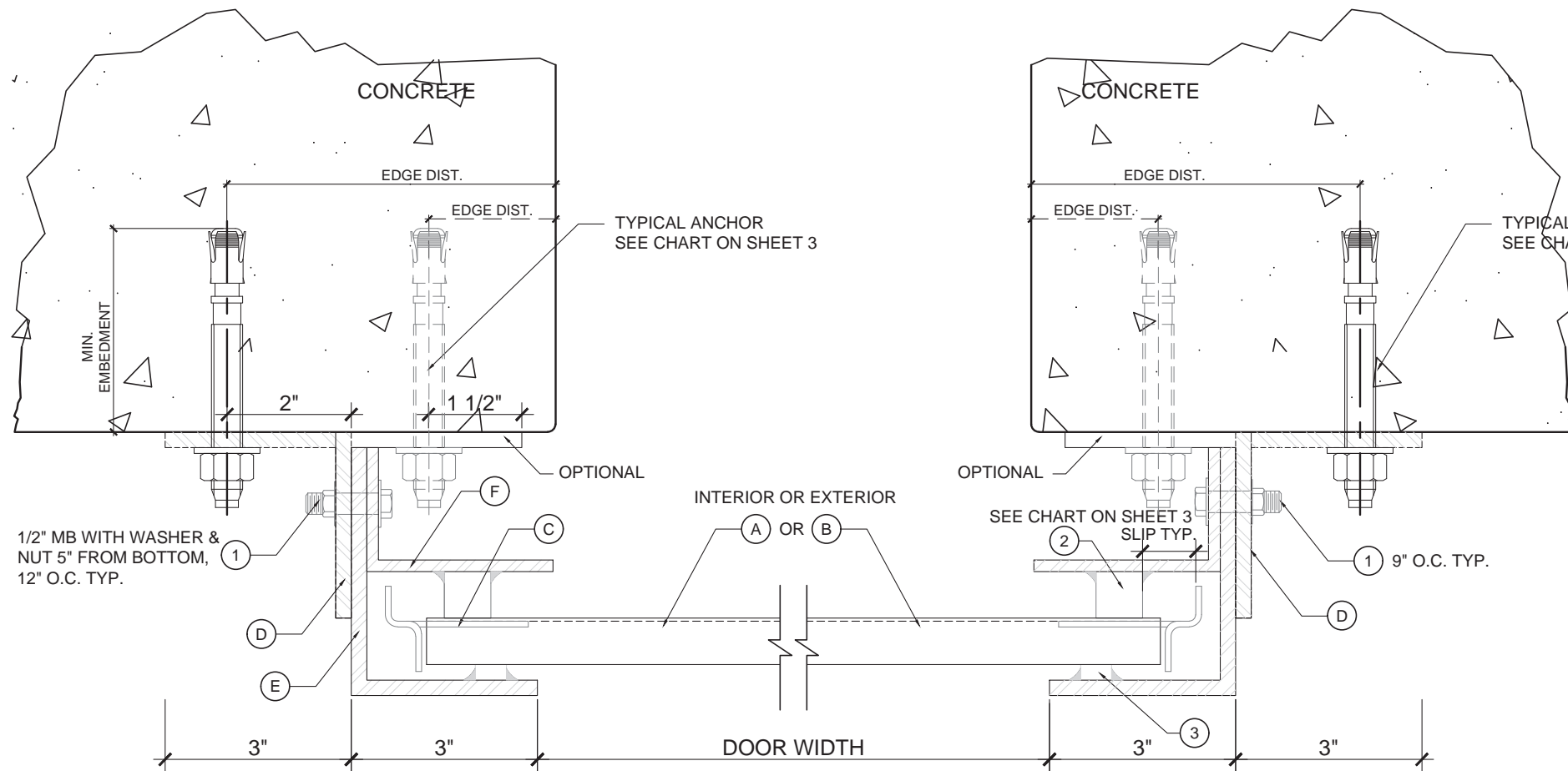
MODEL MRD-65 ROLLING DOOR (LMI)  
**MIAMI ROLLING DOORS, CORP.**  
276 W. 24TH STREET  
HIALEAH, FL 33010  
P: (305) 463 - 9218 F: (305) 463 - 9207  
www.miamirollingdoors.com



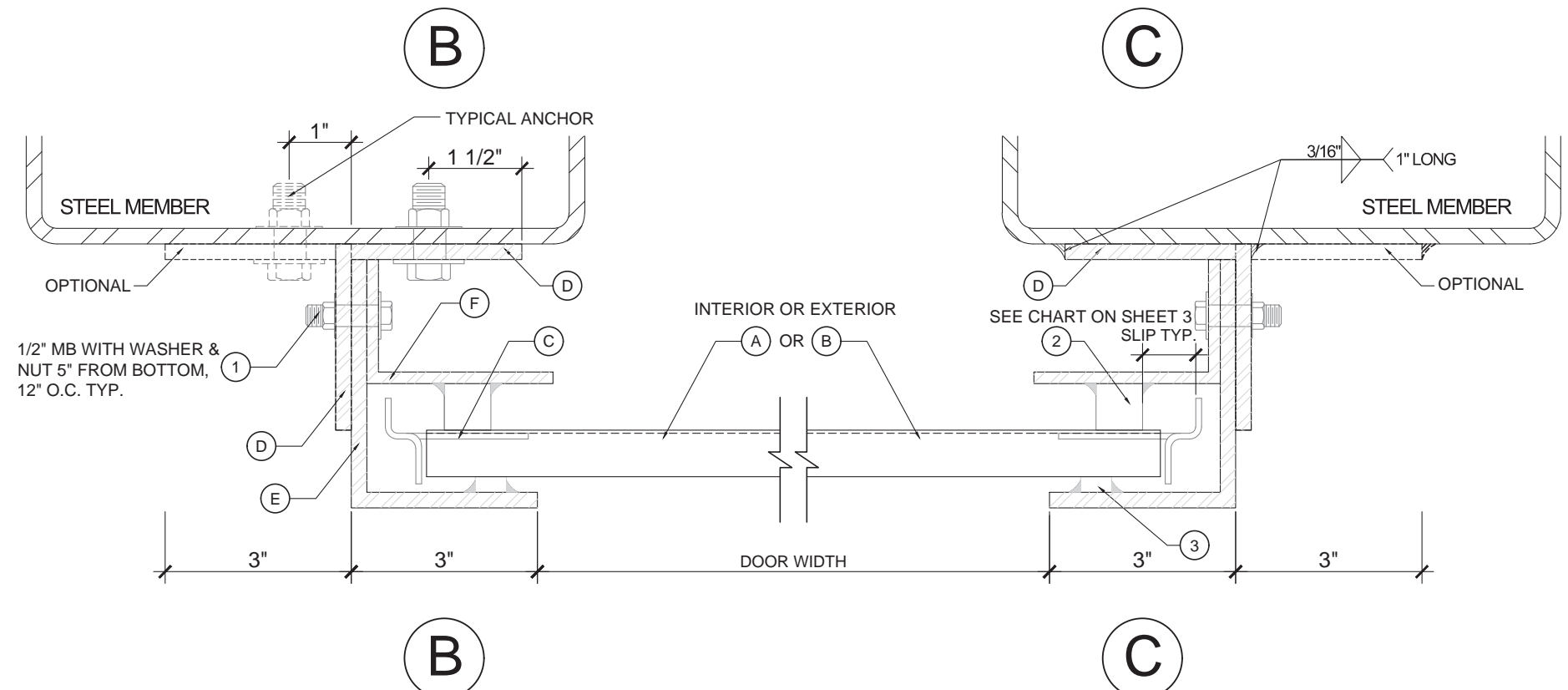
DATE	02.20.2024
SCALE	AS NOTED
DRAWN	James
PROJECT	MCY 15-104

DRAWING NO.  
AD10-25

SHEET 1 of 4



**D** BOTTOM BAR DETAIL



**PRODUCT REVISED**  
 as complying with the Florida  
 Building Code  
 NOA-No. 24-0221.06  
 Expiration Date 12/30/2025  
 By *[Signature]*  
 Miami-Dade Product Control  
 MIAMI-DADE COUNTY

*[Professional Engineer Seal]*  
 YIANG WANG, P.E.  
 FLORIDA REGISTRATION  
 #55983  
 C.A.N. 00077  
 No 55983  
 February 20th, 2024

DATE	02.20.2024
SCALE	AS NOTED
DRAWN	James
PROJECT	MCY 15-104
DRAWING NO.	AD10-25
SHEET	2 of 4

NO.	DATE	DESCRIPTION
15	12/20/2024	UPDATE FBC 2023

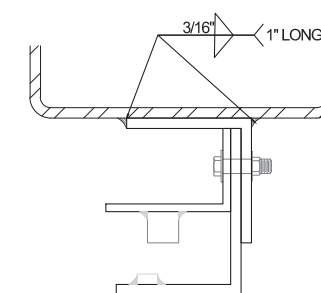
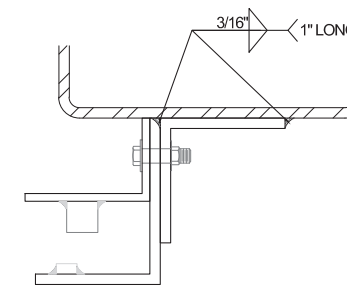
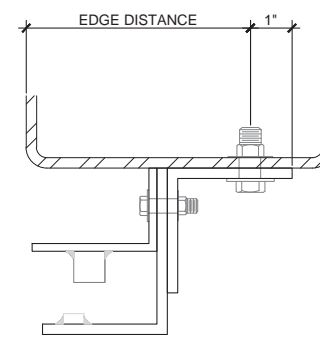
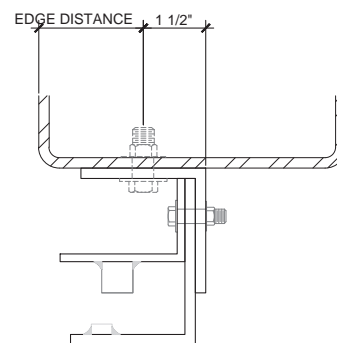
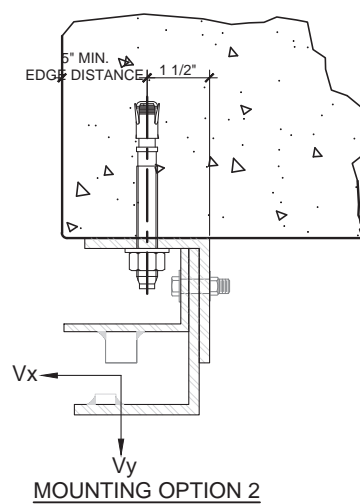
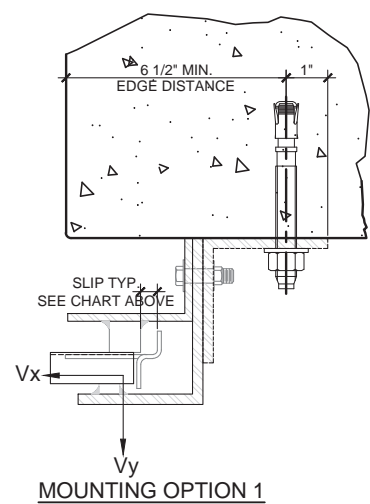
**MCY ENGINEERING, INC.**  
 GLAZING CONSULTANTS  
 12781 MIRAMAR PARKWAY #301 P: 305.271.0117  
 MIRAMAR FL 33027  
 www.MCYEngineering.com  
 MCY@mcyengineering.com

MODEL MRD-65 ROLLING DOOR (LMI)  
 MIAMI ROLLING DOORS, CORP.  
 276 W. 24TH STREET  
 HIALEAH, FL 33010  
 P: (305) 463-9218 F: (305) 463-9207  
 www.miamirollingdoors.com



# ANCHOR SPACING (INCHES)

MAXIMUM DESIGN LOAD (PSF)	DOOR WIDTH (FT)	DESIGN SLIP (IN)	V <sub>x</sub> (LB/FT)	V <sub>y</sub> (LB/FT)	MOUNTING 1		MOUNTING 2		MOUNTING 3		MOUNTING 4				
					1/2" Ø KWIK BOLT		5/8" Ø KWIK BOLT		1/2" Ø KWIK BOLT		5/8" Ø KWIK BOLT		1/2" MACHINE BOLT GRADE 2	5/8" MACHINE BOLT GRADE 2	3/16 X 1" WELD
					fc' = 6000 PSI	fc' = 4000 PSI	fc' = 6000 PSI	fc' = 4000 PSI	fc' = 6000 PSI	fc' = 4000 PSI	fc' = 6000 PSI	fc' = 4000 PSI			
± 55	9'	0.1	1118	261	8.000	8.000	8.000	8.000	8.000	6.500	8.000	8.000	8.000	8.000	12.000
	13'	1/4	1668	371	8.000	8.000	8.000	8.000	5.750	4.500	8.000	6.375	7.500	8.000	12.000
	17'	1/2	1960	481	8.000	7.250	8.000	8.000	4.875	-	7.000	5.375	6.750	7.750	10.250
	21'	3/4	2293	591	8.000	6.250	8.000	8.000	4.000	-	6.000	4.500	5.750	6.500	8.250
	24' - 6 5/8"	1	2559	689	7.500	5.500	8.000	8.000	-	-	5.375	4.000	5.000	5.875	7.625
± 65	9'	0.1	1427	309	8.000	8.000	8.000	8.000	6.500	5.250	8.000	7.500	8.000	8.000	12.000
	13'	1/4	2007	439	8.000	6.750	8.000	8.000	4.500	-	6.500	5.375	6.500	8.000	10.000
	17'	1/2	2325	569	7.500	5.750	8.000	7.250	4.000	-	5.500	4.500	5.500	8.000	8.500
	21'	3/4	2702	699	6.500	4.875	8.000	6.250	-	-	4.750	4.000	4.750	7.500	7.250
	24' - 6 5/8"	1	3005	814	5.750	4.375	7.000	5.500	-	-	4.250	-	4.375	6.250	6.500



### TYPICAL ANCHORS @ JAMB:

(SEE CHART FOR SPACING)

- TYPE A.** 1/2" DIA. KWIK BOLT 3 ANCHOR BY 'HILTI'  
DIRECTLY INTO fc'=6000 PSI OR fc'=4000 PSI CONCRETE,  
4" MIN EMBED,  
MIN EDGE 6.5" @ MOUNTING 1  
MIN EDGE 5" @ MOUNTING 2
- TYPE B** 5/8" DIA. KWIK BOLTS BY 'HILTI'  
DIRECTLY INTO fc'=6000 PSI OR fc'=4000 PSI CONCRETE  
5 1/2" MIN. EMBED  
MIN EDGE 6.5" @ MOUNTING 1  
MIN EDGE 5" @ MOUNTING 2

- TYPE C.** 1/2 DIA. MACHINE BOLTS (MIN. GRADE 2 CRS) W/ WASHER & NUTS  
INTO STEEL 1/4" MIN. THICK STEEL : F<sub>y</sub> = 36 KSI MIN.
- TYPE D.** 5/8" DIA. MACHINE BOLTS (MIN. GRADE 2 CRS) W/ WASHER & NUTS  
INTO STEEL 1/4" MIN. THICK STEEL : F<sub>y</sub> = 36 KSI MIN.
- TYPE E.** 3/16" WELDS ELECTRODE E70  
3/16" x 1" WELD AT EACH SIDE OF STEEL ANGLE

**PRODUCT REVISED**  
as complying with the Florida Building Code  
NOA-No. 24-0221.06  
Expiration Date 12/30/2025  
By *[Signature]*  
Miami-Dade Product Control  
MIAMI-DADE COUNTY

**YIANG WANG, P.E.**  
FLORIDA REGISTRATION  
#55983  
C.A.N. 000077  
*[Signature]*  
STATE OF FLORIDA  
PROFESSIONAL ENGINEER  
February 20th, 2024

DATE	02.20.2024
SCALE	AS NOTED
DRAWN	James
PROJECT	MCY 15-104
DRAWING NO.	AD10-25
SHEET	3 of 4

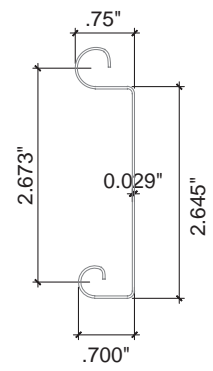
**MCY**

**MCY ENGINEERING, INC.**  
GLAZING CONSULTANTS  
12781 MIRAMAR PARKWAY #301 P: 305.271.0117  
MIRAMAR FL 33027  
www.MCYEngineering.com

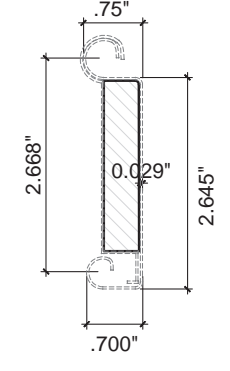
REVISIONS  
NO. DATE DESCRIPTION  
R5 12/20/2024 UPDATE FBC 2023

**MODEL MRD-65 ROLLING DOOR (LMI)**  
**MIAMI ROLLING DOORS, CORP.**  
276 W. 24TH STREET  
HIALEAH, FL 33010  
P: (305) 463-9218 F: (305) 463-9207  
www.miamirollingdoors.com

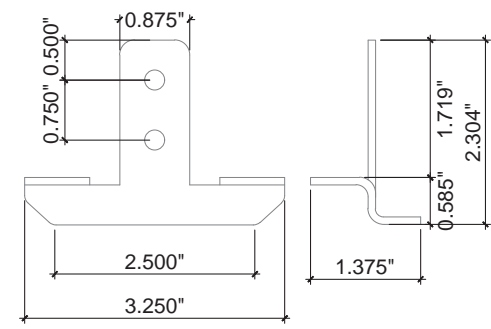




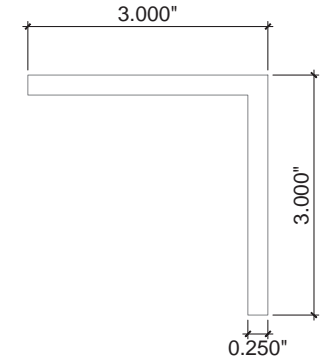
**A** FLAT SLATE PROFILE  
22 GA



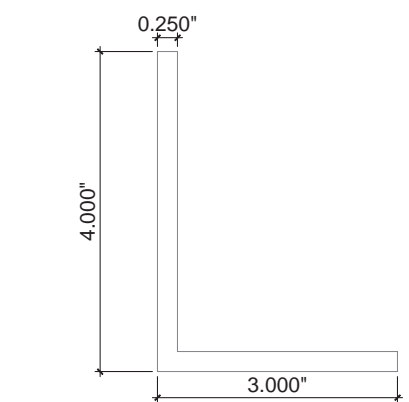
**B** INSULATED FLAT SLAT PROFILE  
22 GA



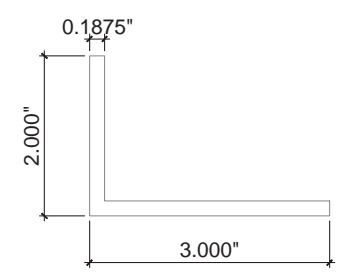
**C** WINDLOCKS  
11 GA



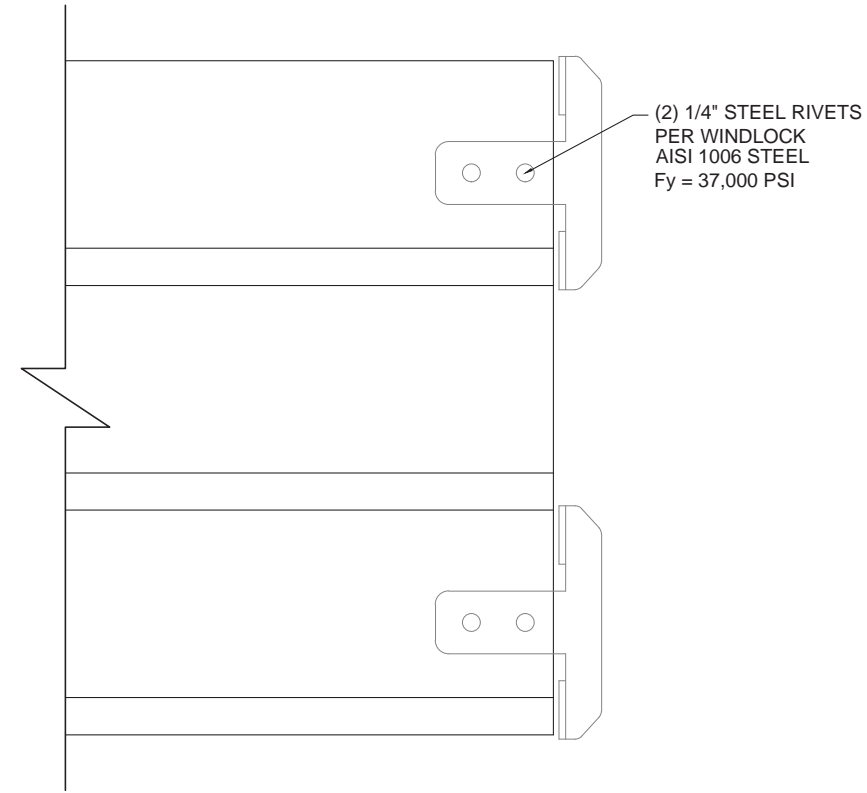
**D** 3 x 3 x 1/4" STEEL ANGLE



**E** 3 x 4 x 1/4" STEEL ANGLE



**F** 2 x 3 x 3/16" STEEL ANGLE



**INTERLOCKING SLATS W/ WINDLOCKS  
@ EVERY OTHER SLAT**

**BILL OF MATERIALS**

ITEM #	QTY.	DESCRIPTION	MATERIAL	MANUFACTURER/REMARKS
A	AS REQD	22GA (0.029") FLAT SLAT	GALVANIZED STEEL OR STAINLESS STEEL	ASTM A653 Fy = 50 KSI OR STAINLESS STEEL AISI 304 Fy = 50KSI . MIAMI ROLLING DOORS, CORP
B	AS REQD	INSULATED FLAT SLAT	EXPANDED POLYSTYRENE	OPTIONAL NOA 11-0926.07 IF NEEDED FOR INSULATION OR FIRE PROTECTION PURPOSES
C	EVERY OTHER SLAT	11 GA WINDLOCKS	PLATED STEEL	ASTM A36 MIN. MIAMI ROLLING DOORS, CORP.
D	2 PER FRAME	3 x 3 x 1/4" STEEL ANGLE	STEEL	ASTM A36 MIN.
E	2 PER FRAME	3 x 4 x 1/4" STEEL ANGLE	STEEL	ASTM A36 MIN.
F	2 PER FRAME	2 x 3 x 3/16" STEEL ANGLE	STEEL	ASTM A36 MIN.
1	AS REQD.	1/2" x 1 1/2" ASSEMBLY BOLT	STEEL SAE GRADE 2 MIN.	5" FROM BOTTOM AND 12" O.C.
2	AS REQD.	3/4" x 3/4" CONTINUOUS SOLID STEEL WINDBAR	STEEL ASTM A36 MIN.	3/16" x 1" WELDED TO TRACK EACH SIDE @ 12 O.C.
3	AS REQD.	1/2" x 1/4" CONTINUOUS SOLID STEEL WINDBAR	STEEL ASTM A36 MIN.	3/16" x 1" WELDED TO TRACK EACH SIDE @ 12 O.C.

REVISIONS	NO. DATE	DESCRIPTION
	15 12/20/2024	UPDATE PBC 2023

**MCY ENGINEERING, INC.**  
GLAZING CONSULTANTS

**MCY**

12781 MIRAMAR PARKWAY #301 P: 305.271.0117  
MIRAMAR FL 33027  
www.MCYEngineering.com

MODEL MRD-65 ROLLING DOOR (LMI)

**MIAMI ROLLING DOORS, CORP.**  
276 W. 24TH STREET  
HIALEAH, FL 33010  
P: (305) 463 - 9218 F: (305) 463 - 9207  
www.miamirollingdoors.com



**PRODUCT REVISED**  
as complying with the Florida Building Code  
NOA-No. 24-0221.06  
Expiration Date 12/30/2025  
By *[Signature]*  
Miami-Dade Product Control

MIAMI-DADE COUNTY

**YI LONG WANG, P.E.**  
FLORIDA REGISTRATION #55983  
C.A.N. 858877

**STATE OF FLORIDA PROFESSIONAL ENGINEER**

February 20th, 2024

DATE	02.20.2024
SCALE	AS NOTED
DRAWN	James
PROJECT	MCY 15-104
DRAWING NO.	AD10-25
SHEET	4 of 4