



DEPARTMENT OF REGULATORY AND ECONOMIC RESOURCES (RER)
BOARD AND CODE ADMINISTRATION DIVISION

NOTICE OF ACCEPTANCE (NOA)

MIAMI-DADE COUNTY
PRODUCT CONTROL SECTION
11805 SW 26 Street, Room 208
Miami, Florida 33175-2474
T (786) 315-2590 F (786) 315-2599
www.miamidade.gov/economy

Construction Specialties, Inc.
49 Meeker Avenue
Cranford, NJ 07016

SCOPE:

This NOA is being issued under the applicable rules and regulations governing the use of construction materials. The documentation submitted has been reviewed and accepted by Miami-Dade County RER-Product Control Section to be used in Miami-Dade County and other areas where allowed by the Authority Having Jurisdiction (AHJ).

This NOA shall not be valid after the expiration date stated below. The Miami-Dade County Product Control Section (In Miami-Dade County) and/ or the AHJ (in areas other than Miami Dade County) reserve the right to have this product or material tested for quality assurance purposes. If this product or material fails to perform in the accepted manner, the manufacturer will incur the expense of such testing and the AHJ may immediately revoke, modify, or suspend the use of such product or material within their jurisdiction. RER reserves the right to revoke this acceptance if it is determined by Miami-Dade County Product Control Section that this product or material fails to meet the requirements of the applicable building code.

This product is approved as described herein and has been designed to comply with the Florida Building Code, including the High Velocity Hurricane Zone.

DESCRIPTION: Model DC-9614 Aluminum Louver

APPROVAL DOCUMENT: Drawing No. **RD-1457**, titled “DC-9614 Submittal Drawings”, sheets 1 through 13 of 13, dated 11/20/2015, with revision 5 dated 01/23/2024, prepared by Construction Specialties, Inc., signed and sealed by Wayne K. Helmila, P.E., bearing the Miami-Dade County Product Control revision stamp with the Notice of Acceptance number and expiration date by the Miami-Dade County Product Control Section.

MISSILE IMPACT RATING: Large and Small Missile Impact Resistant

LABELING: Each unit shall bear a permanent label with the manufacturer's name or logo, Del Rio, TX, model/series, and following statement: "Miami-Dade County Product Control Approved", unless otherwise noted herein.

LIMITATION: This louver has not been evaluated for compliance with the impact testing standard ANSI/AMCA 540.

RENEWAL of this NOA shall be considered after a renewal application has been filed and there has been no change in the applicable building code negatively affecting the performance of this product.

TERMINATION of this NOA will occur after the expiration date or if there has been a revision or change in the materials, use, and/ or manufacture of the product or process. Misuse of this NOA as an endorsement of any product, for sales, advertising or any other purposes shall automatically terminate this NOA. Failure to comply with any section of this NOA shall be cause for termination and removal of NOA.

ADVERTISEMENT: The NOA number preceded by the words Miami-Dade County, Florida, and followed by the expiration date may be displayed in advertising literature. If any portion of the NOA is displayed, then it shall be done in its entirety.

INSPECTION: A copy of this entire NOA shall be provided to the user by the manufacturer or its distributors and shall be available for inspection at the job site at the request of the Building Official.

This NOA **revises NOA # 20-1222.13** and consists of this page 1 and evidence pages E-1, E-2 and E-3, as well as approval document mentioned above.

The submitted documentation was reviewed by **Carlos M. Utrera, P.E.**



04/04/24

NOA No. 24-0226.05
Expiration Date: July 28, 2026
Approval Date: April 11, 2024
Page 1

NOTICE OF ACCEPTANCE: EVIDENCE SUBMITTED

1. **EVIDENCE SUBMITTED UNDER PREVIOUS NOA's**
 - A. **DRAWINGS “Submitted under NOA # 16-1129.08”**
 1. Drawing No. **RD-1457**, titled “DC-9614 Submittal Drawings”, sheets 1 through 13 of 13, dated 11/20/2015, with revision **1** dated 11/21/2016, prepared by Construction Specialties, Inc., signed and sealed by L. David Rice, P.E.
 - B. **TESTS “Submitted under NOA # 16-0222.04”**
 1. Test reports on 1) Uniform Static Air Pressure Test, Loading per FBC TAS 202-94
2) Large Missile Impact Test per FBC, TAS 201-94
3) Cyclic Wind Pressure Loading per FBC, TAS 203-94
along with marked-up drawings and installation diagram of DC-9614 Aluminum Louvers, prepared by Intertek/Architectural Testing, Inc., Report No. **F1331.01-109-18**, dated 12/21/2015, signed and sealed by Joseph A. Reed, P.E.
 2. Test Report on High Velocity Wind Driven Rain Resistance per AMCA 550-09 of a Model DC-9614 Aluminum Louver, prepared by Intertek/Architectural Testing, Inc, Test Report No. **E4141.02-602-44**, dated 01/14/2015, with revision **2** dated 06/26/2015, signed and sealed by Joseph A. Reed, P.E.
 - C. **CALCULATIONS “Submitted under NOA # 16-0222.04”**
 1. Anchor and structural calculations prepared by Rice Engineering, dated 02/11/2016, signed and sealed by L. David Rice, P.E.
 - D. **QUALITY ASSURANCE**
 1. Miami-Dade Department of Regulatory and Economic Resources (RER)
 - E. **MATERIAL CERTIFICATIONS**
 1. None.
 - F. **STATEMENTS “Submitted under NOA # 16-0222.04”**
 1. Statement letter of code conformance to the 5th edition (2014) FBC issued by Rice Engineering, dated 02/11/2015, signed and sealed by L. David Rice, P.E.
 2. Statement letter of no financial interest issued by Rice Engineering, dated 02/11/2015, signed and sealed by L. David Rice, P.E.



Carlos M. Utrera, P.E.
Product Control Examiner
NOA No. 24-0226.05
Expiration Date: July 28, 2026
Approval Date: April 11, 2024

NOTICE OF ACCEPTANCE: EVIDENCE SUBMITTED

2. EVIDENCE SUBMITTED UNDER NOA # 17-1218.26

A. DRAWINGS

1. None.

B. TESTS

1. None.

C. CALCULATIONS

1. None.

D. QUALITY ASSURANCE

1. Miami-Dade Department of Regulatory and Economic Resources (RER)

E. MATERIAL CERTIFICATIONS

1. None.

F. STATEMENTS

1. Statement letter of code conformance to the 6th Edition (2017) FBC issued by Rice Engineering, dated 11/29/2017, signed and sealed by Wayne K. Helmila, P.E.
2. Statement letters of no financial interest issued by Rice Engineering, dated 01/20/2018, signed and sealed by Wayne K. Helmila, P.E.



Carlos M. Utrera, P.E.
Product Control Examiner
NOA No. 24-0226.05
Expiration Date: July 28, 2026
Approval Date: April 11, 2024

NOTICE OF ACCEPTANCE: EVIDENCE SUBMITTED

3. EVIDENCE SUBMITTED UNDER NOA # 20-1222.13 AND NEW

A. DRAWINGS

1. Drawing No. **RD-1457**, titled “DC-9614 Submittal Drawings”, sheets 1 through 13 of 13, dated 11/20/2015, with revision 5 dated 01/23/2024, prepared by Construction Specialties, Inc., signed and sealed by Wayne K. Helmila, P.E.

B. TESTS

1. None.

C. CALCULATIONS

1. None.

D. QUALITY ASSURANCE

1. Miami-Dade Department of Regulatory and Economic Resources (RER).

E. MATERIAL CERTIFICATIONS

1. None.

F. STATEMENTS

1. Statement letter of code conformance to 8th edition (2023) of the FBC, issued by Rice Engineering, dated 01/23/2024, signed and sealed by Wayne K. Helmila, P.E.
2. Statement letter of no financial interest, issued by Rice Engineering, dated 01/23/2024, signed and sealed by Wayne K. Helmila, P.E.

“Submitted under NOA # 20-1222.13”

3. Statement letter of code conformance to the 7th Edition (2020) of the FBC issued by Rice Engineering, dated 11/11/2020, signed and sealed by Wayne K. Helmila, P.E.
4. Statement letter of no financial interest issued by Rice Engineering, dated 11/11/2020, signed and sealed by Wayne K. Helmila, P.E.

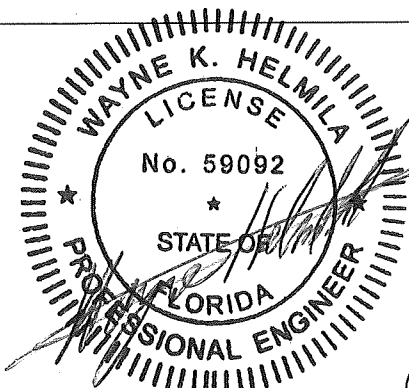


Carlos M. Utrera, P.E.
Product Control Examiner
NOA No. 24-0226.05
Expiration Date: July 28, 2026
Approval Date: April 11, 2024

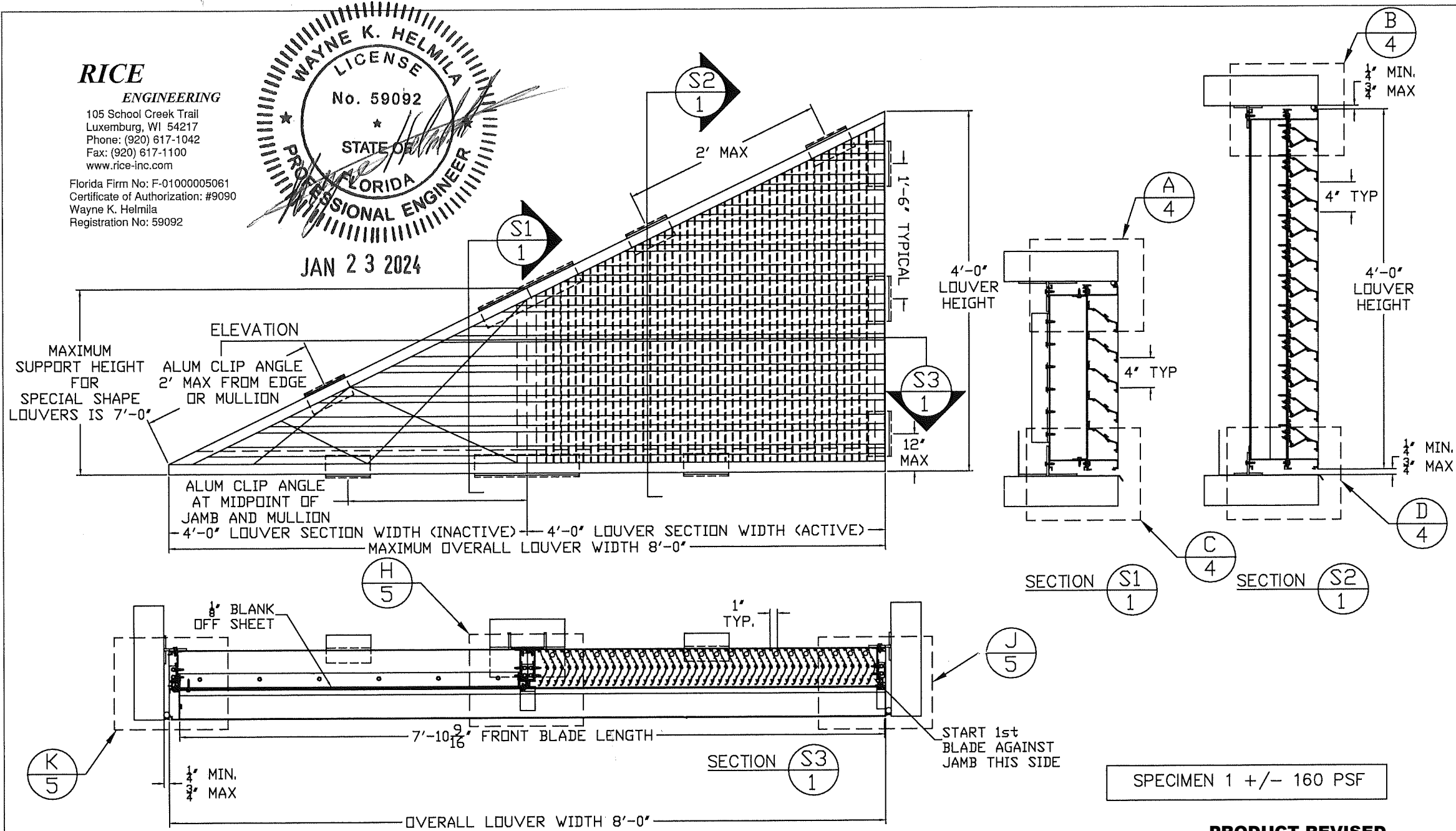
RICE

ENGINEERING
105 School Creek Trail
Luxemburg, WI 54217
Phone: (920) 617-1042
Fax: (920) 617-1100
www.rice-inc.com

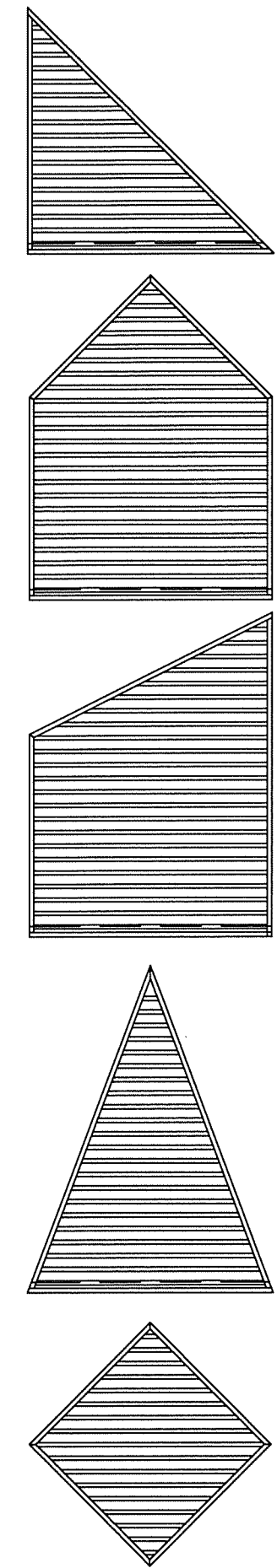
Florida Firm No: F-01000005061
Certificate of Authorization: #9090
Wayne K. Helmila
Registration No: 59092



JAN 23 2024

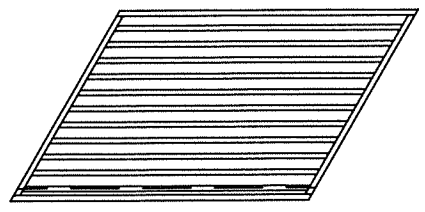


EXAMPLES OF SPECIAL SHAPES AVAILABLE
(NO ROUND OR CIRCULAR FRAMES PERMITTED.)



SPECIMEN 1 +/- 160 PSF

PRODUCT REVISED
as complying with the Florida
Building Code
NOA-No. 24-0226.05
Expiration Date 07/28/2026
By *[Signature]*
Miami-Dade Product Control



- 1) It shall be the responsibility of the Structural Engineer of Record to verify the capacity of the structure to support the loads imposed by the louvers.
- 2) These louvers have been designed according to the Florida Building Code and the Aluminum Design Manual. They are tested in accordance with Dade County protocols TAS 201, TAS 202 and TAS 203.
- 3) All fasteners shall be Series 300, condition CW Fy = 65 ksi, Fu = 110 ksi minimum, except the fasteners specified in note 12 of this sheet 1 as "Head, sill and jambs are constructed of extruded aluminum. The corners are coped and butted, secured with (2) #8 x 1-1/2" screws at each corner".
- 4) All block grout substrate shall be designed by others (2,000 PSI, ASTM C90, Type II with min. 2000 PSI Grout).
- 5) Section widths and heights are limited as shown in elevations and details.
- 6) Each fastener used must be detailed on the drawing and verified on the NOA.
- 7) Separation of unpainted aluminum and dissimilar materials per Aluminum Design Manual to be maintained by the installer.
- 8) This louver system has been tested, analyzed and approved for design pressures up to and including +/-160 PSF and +/- 120 PSF as noted in this drawing package.
- 9) Stack sections horizontally to an unlimited opening width with rear mullions at no more than 3' or 4' o.c. depending on heights/windload.
- 10) Louver Construction - Head, sill and jambs are constructed of extruded aluminum. The corners are coped and butted, secured with (2) #8 x 1 1/2" screws at each corner, through the sill into the jambs and through the head into the jambs. The jambs are also secured to the head and sill with a 1"x1 1/2"x1/8"x2" LG alum. angle with (4) 1/4-14x1" LG SS HH TEK Screws. The rear blades are secured to the head and sill using (2) #8 x 1 1/2" hex head screws. Front blades are secured using a blade brace, and then a #12x2" LG SS HH TEK Screw (field installed) through the top of the blade at each blade end. For special shape louvers, louvers are supplied with front blades shop attached and welded.
- 11) These louvers have been designed and tested in accordance with AMCA 550 Test Method for High Velocity Wind Driven Rain Resistant Louvers. Minimum section size to be 16" x 16". AMCA 550 only applies to square/rectangular louvers. Silicone sealant is required to seal louvers into opening based on testing in accordance with AMCA 550. Per the testing to AMCA 550, a sill pan is required on all louvers and to be a minimum of 6" tall. Passing AMCA 550 significantly reduces rain penetrating the space behind the louvers. Per Miami-Dade D.R.E.R.: the louver may be installed in a location where the room behind the louver is NOT DESIGNED to drain water penetrating into the room and the room will house non waterproof or non water resistant equipment, components or supplies.
- 12) A horizontal rod and tube spacer is used on the rear blades if the section height is greater than 96".
- 13) For louver areas requiring intake or exhaust airflow (active), both front and rear blades must be used. For all other areas where no airflow is required (inactive) a fully blanked off louver section can be supplied using the 1/8" aluminum blank off sheet with formed sides.

REVISION: 5 01-23-24
DATE: 11-20-15
SHEET: 1 OF 13
DRW NO.: RD-1457
PROJECT: DC-9614, SUBMITTAL DRAWINGS
TITLE: SPECIMEN 1 AND AVAILABLE SPECIAL SHAPES
SCALE: 3/4" = 1'-0"
DRW BY: R. GEIST

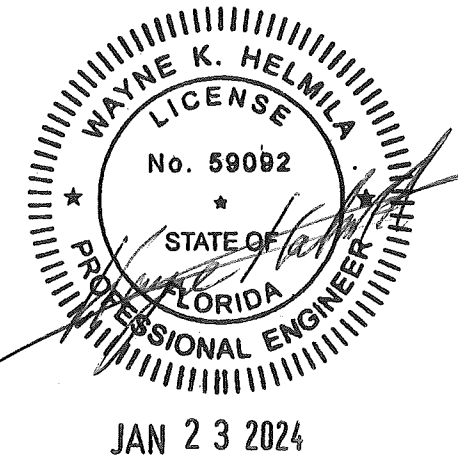
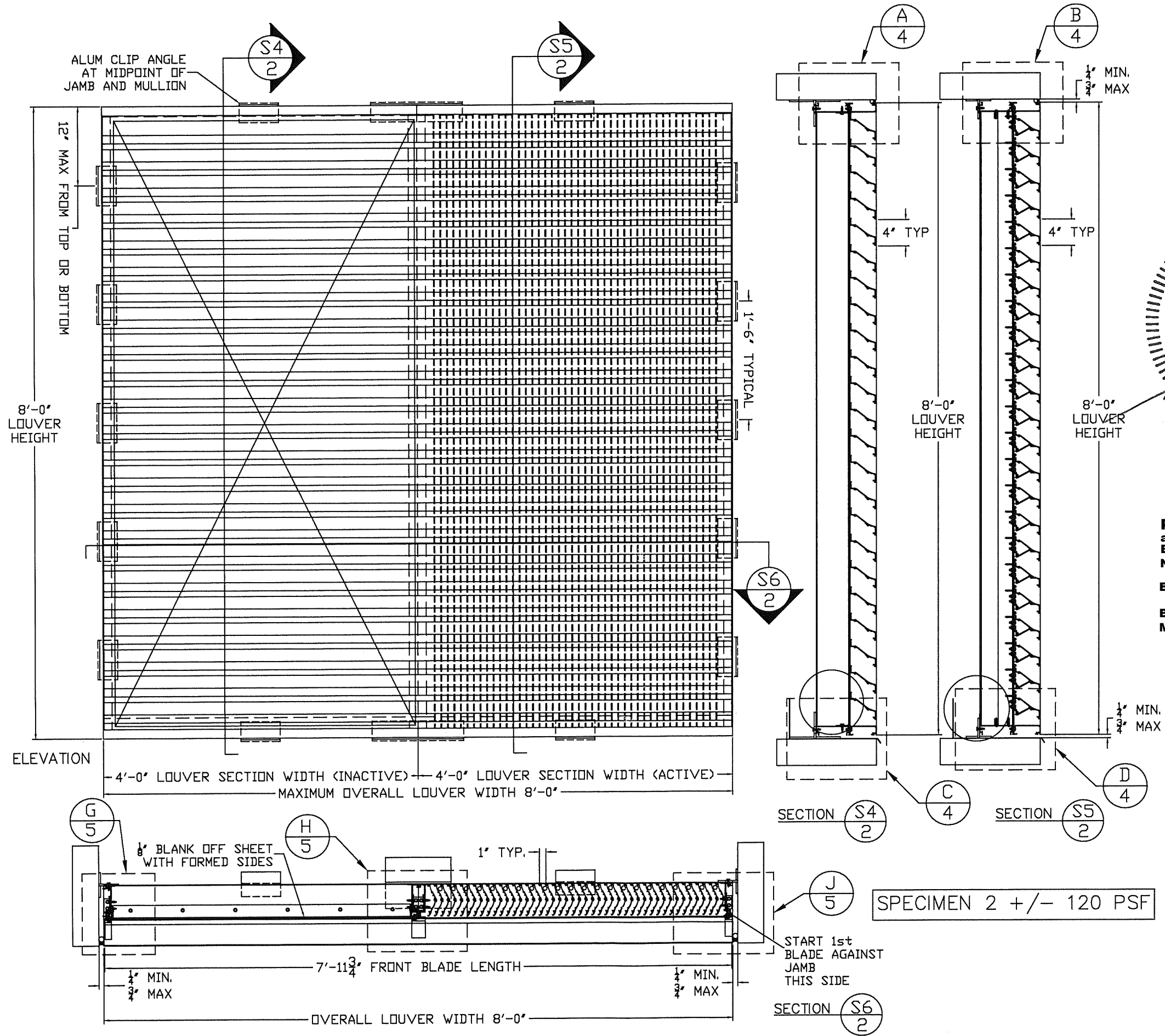
Construction Specialties™
49 MEEKER AVENUE, CRANFORD, NEW JERSEY
PHONE: 1-800-631-7379 / FAX: 908-272-5844



RICE
ENGINEERING

105 School Creek Trail
Luxemburg, WI 54217
Phone: (920) 617-1042
Fax: (920) 617-1100
www.rice-inc.com

Florida Firm No: F-01000005061
Certificate of Authorization: #9090
Wayne K. Helmila
Registration No: 59092



PRODUCT REVISED
as complying with the Florida Building Code
NOA-No. 24-0226.05
Expiration Date 07/28/2026
By *[Signature]*
Miami-Dade Product Control

REVISION: 5	01-23-24
DATE: 11-20-15	
SHEET: 2 OF 13	
DRW NO: RD-1457	
PROJECT: DC-9614: SUBMITTAL DRAWINGS	
TITLE: SPECIMEN 2	
SCALE: 3/4" = 1'-0"	
DRW BY: R. GEIST	

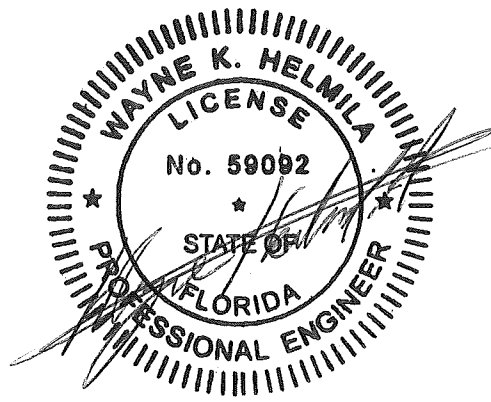
Construction Specialties™
49 MEEKER AVENUE, CRANFORD, NEW JERSEY
PHONE: 1-800-631-7379 / FAX: 908-272-5844



RICE
ENGINEERING

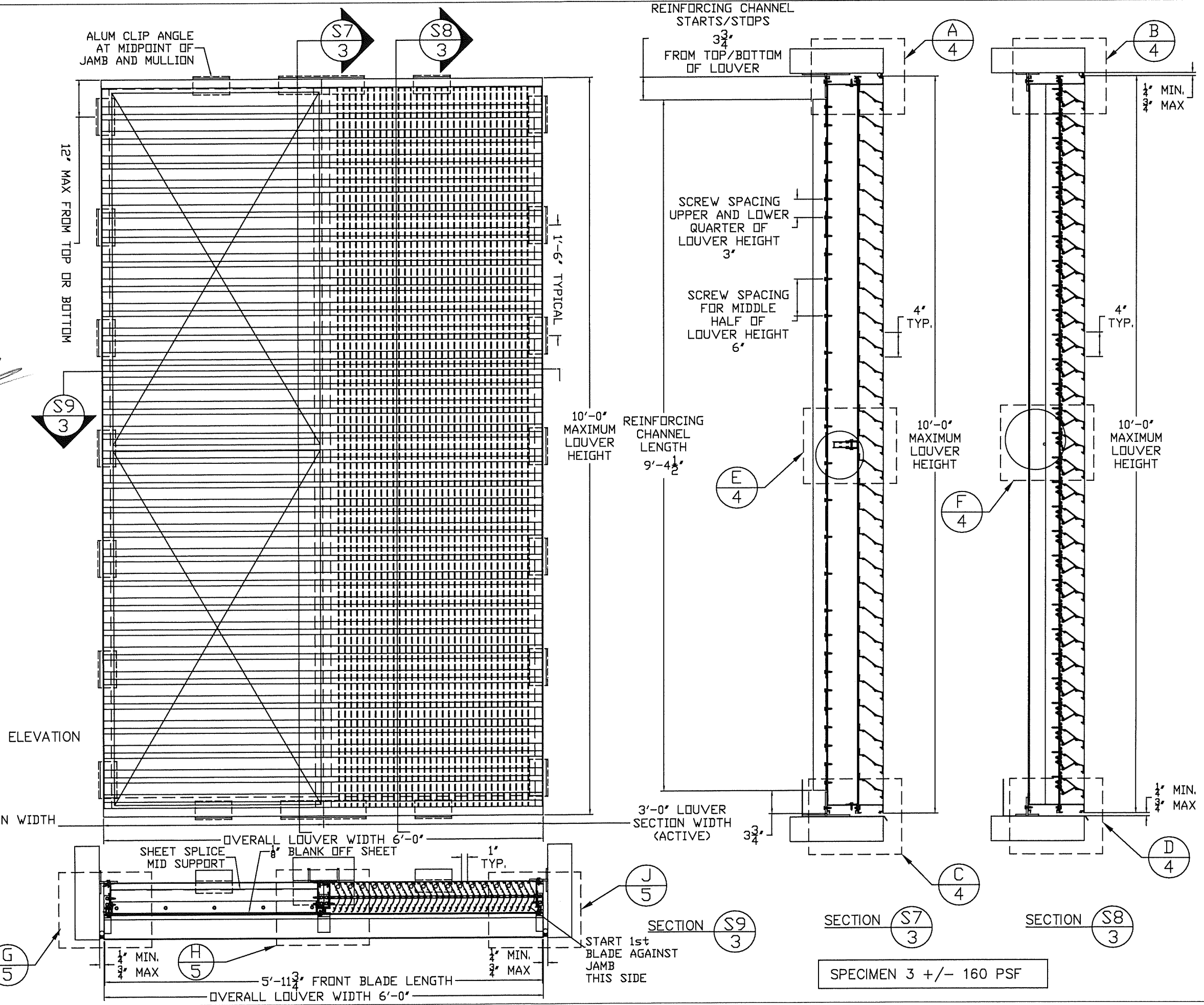
105 School Creek Trail
Luxemburg, WI 54217
Phone: (920) 617-1042
Fax: (920) 617-1100
www.rice-inc.com

Florida Firm No: F-01000005061
Certificate of Authorization: #9090
Wayne K. Helmila
Registration No: 59092



JAN 23 2024

PRODUCT REVISED
as complying with the Florida
Building Code
NOA-No. 24-0226.05
Expiration Date 07/28/2026
By *[Signature]*
Miami-Dade Product Control



ELEVATION

SPECIMEN 3 +/- 160 PSF

REVISION: 5	01-23-24
DATE: 11-20-15	
SHEET: 3 OF 13	
DRW NO: RD-1457	

PROJECT: DC-9614 SUBMITTAL DRAWINGS
TITLE: SPECIMEN 3
SCALE: 3/4" = 1'-0"
DRW BY: R. GEIST

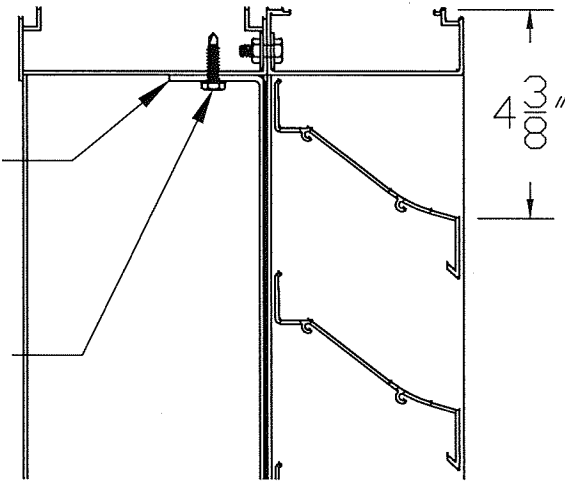


Construction Specialties™
49 MEEKER AVENUE, CRANFORD, NEW JERSEY
PHONE: 1-800-631-7379 / FAX: 908-272-5844

1/8" BLANK
OFF SHEET
WITH FORMED
SIDES

#10x1" LG SS
HH TEK
SCREW, 8" O.C.

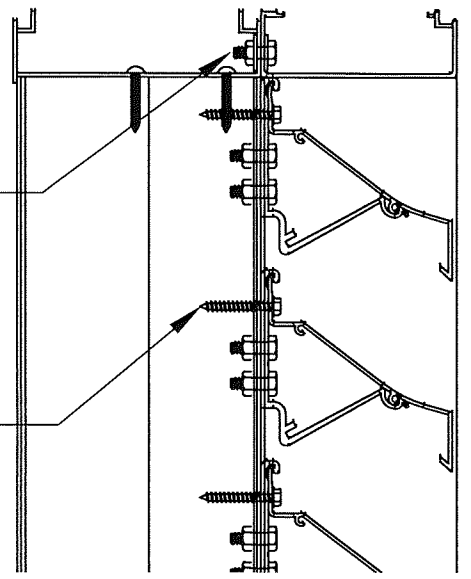
DETAIL A
4



1/4"-14 X3/4" LG
SS BOLT/NUT
12" O.C.

#12X2" LG SS
HH TEK SCREW,
FIELD
INSTALLED
(PART #112)

DETAIL B
4

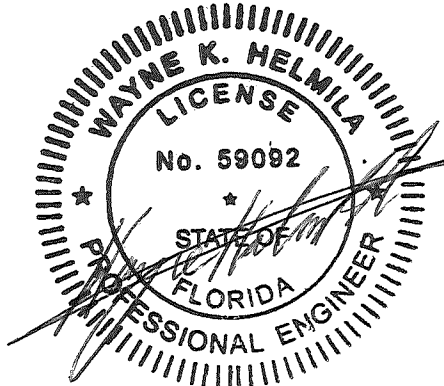


RICE

ENGINEERING

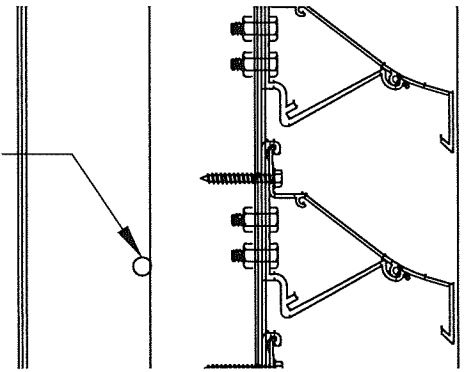
105 School Creek Trail
Luxemburg, WI 54217
Phone: (920) 617-1042
Fax: (920) 617-1100
www.rice-inc.com

Florida Firm No: F-01000005061
Certificate of Authorization: #9090
Wayne K. Helmila
Registration No: 59092



PRODUCT REVISED
as complying with the Florida
Building Code
NOA-No. 24-0226.05
Expiration Date 07/28/2026
By *[Signature]*
Miami-Dade Product Control

3/8" SPACER TUBE
AND 1/4" SS ROD
(REQ/D ON
LOUVER SECTIONS
OVER 8' HIGH)



DETAIL F
4

1/8" BLANK
OFF SHEET
WITH FORMED
SIDES

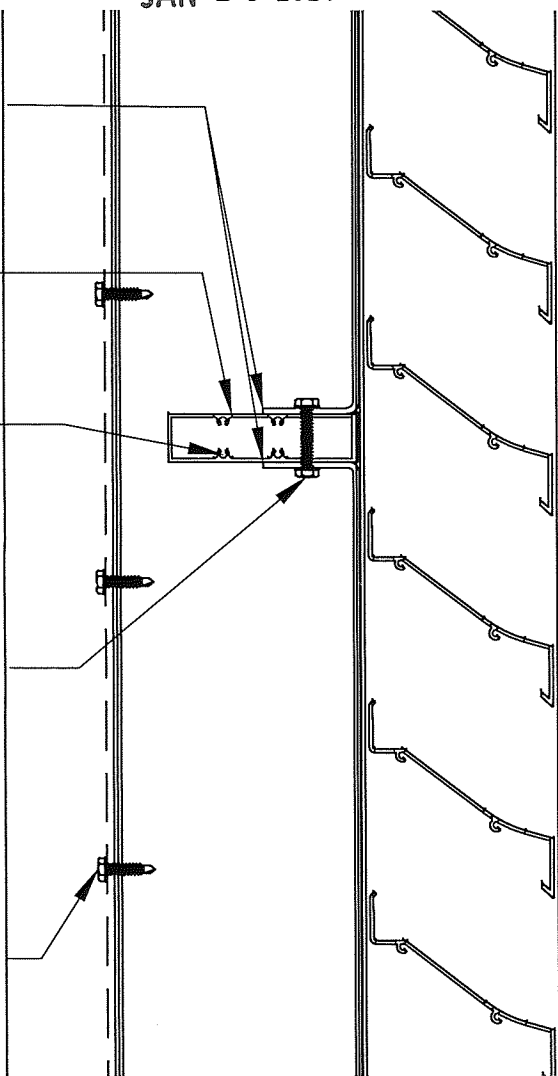
SHEET
SPLICE MID
SUPPORT

(8) #8X1-1/2"
LG SS
PH SMS

#10x1" LG SS
HH TEK
SCREW, 8" O.C.
(SCREWS AT
THIS MID
SUPPORT ARE
OFFSET)

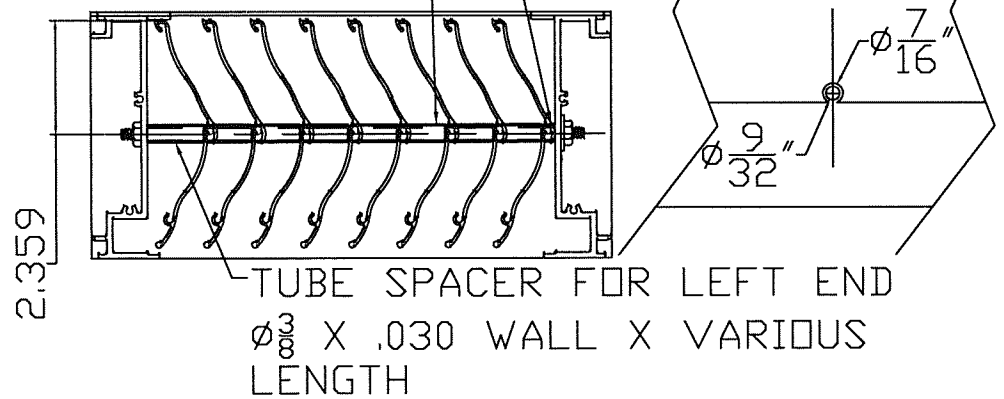
(2) 1/4"-14X1" LG
SS HH TEK
SCREW, SEE
SHEET 3 OF 13
FOR SPACING

DETAIL E
4



TYP. TUBE SPACER
ø₃ X .030 WALL X
NOMINAL 15/16 LENGTH

MAKE-UP SPACER ø₃
X .030 WALL X
NOMINAL 7/32 LENGTH

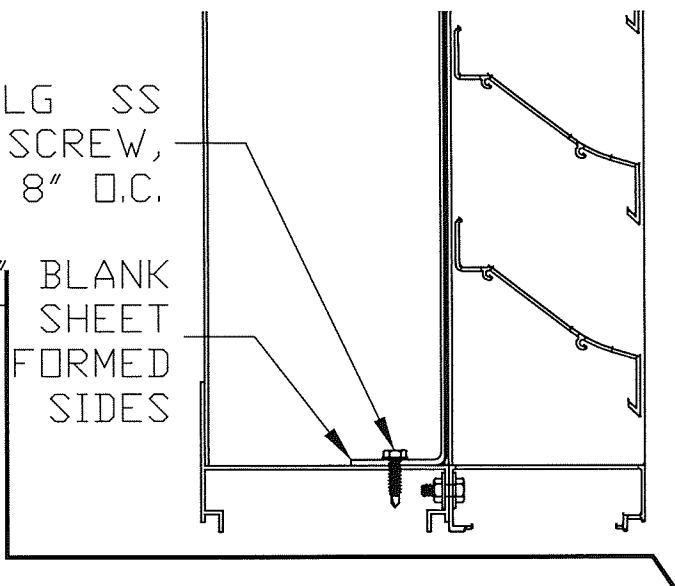


ø₃ SPACER TUBE AND ø 1/4" INCH SS ROD
LAYOUT

#10x1" LG SS
HH TEK SCREW,
8" O.C.

1/8" BLANK
OFF SHEET
WITH FORMED
SIDES

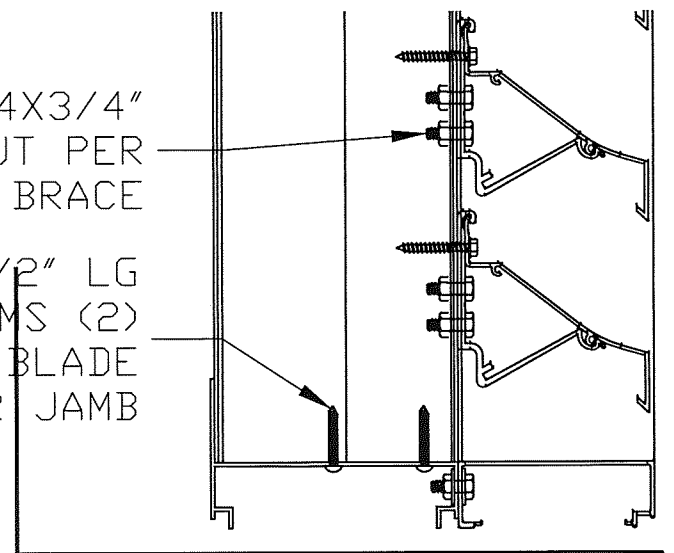
DETAIL C
4



(2) 1/4"-14X3/4"
LG BOLT/NUT PER
BLADE BRACE

#8x1-1/2" LG
SS PH SMS (2)
EACH REAR BLADE
AND REAR JAMB

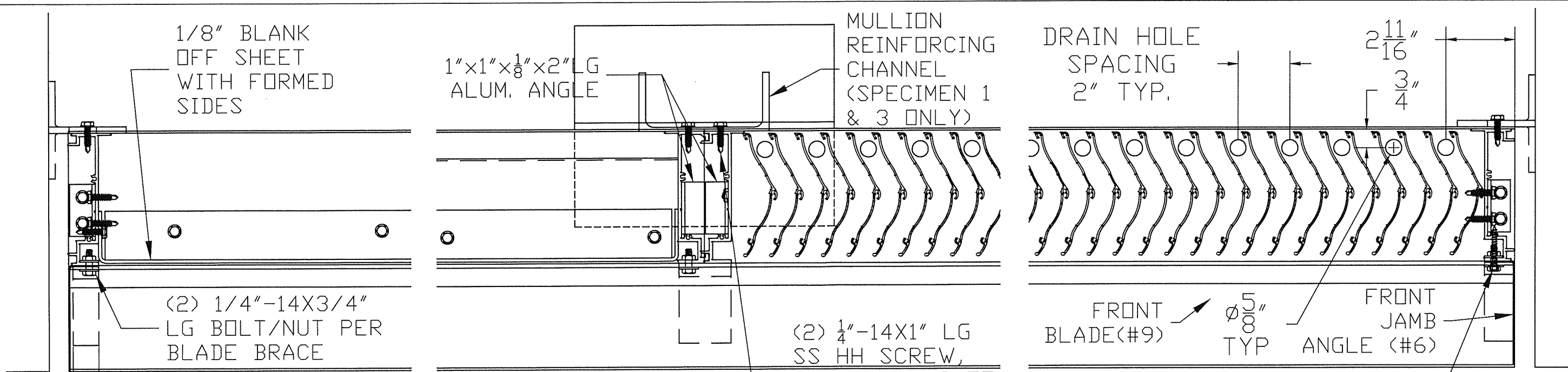
DETAIL D
4



Construction Specialties™
49 MEEKER AVENUE, CRANFORD, NEW JERSEY
PHONE: 1-800-631-7379 / FAX: 908-272-5844

PROJECT: DC-9614 SUBMITTAL DRAWINGS
TITLE: LOUVER ASSEMBLY DETAILS PART A
SCALE: 3" = 1'-0"
DRW BY: R. GEIST

REVISION: 5 01-23-24
DATE: 11-20-15
SHEET: 4 OF 13
DRW NO: RD-1457



RICE
ENGINEERING

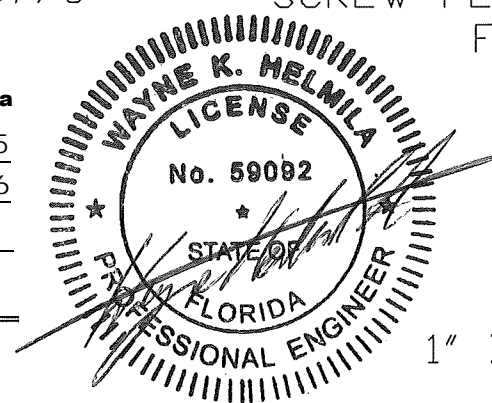
105 School Creek Trail
Luxemburg, WI 54217
Phone: (920) 617-1042
Fax: (920) 617-1100
www.rice-inc.com

Florida Firm No: F-01000005061
Certificate of Authorization: #9090
Wayne K. Helmila
Registration No: 59092

PRODUCT REVISED
as complying with the Florida
Building Code
NOA-No. 24-0226.05

Expiration Date 07/28/2026

By *[Signature]*
Miami-Dade Product Control



JAN 23 2024

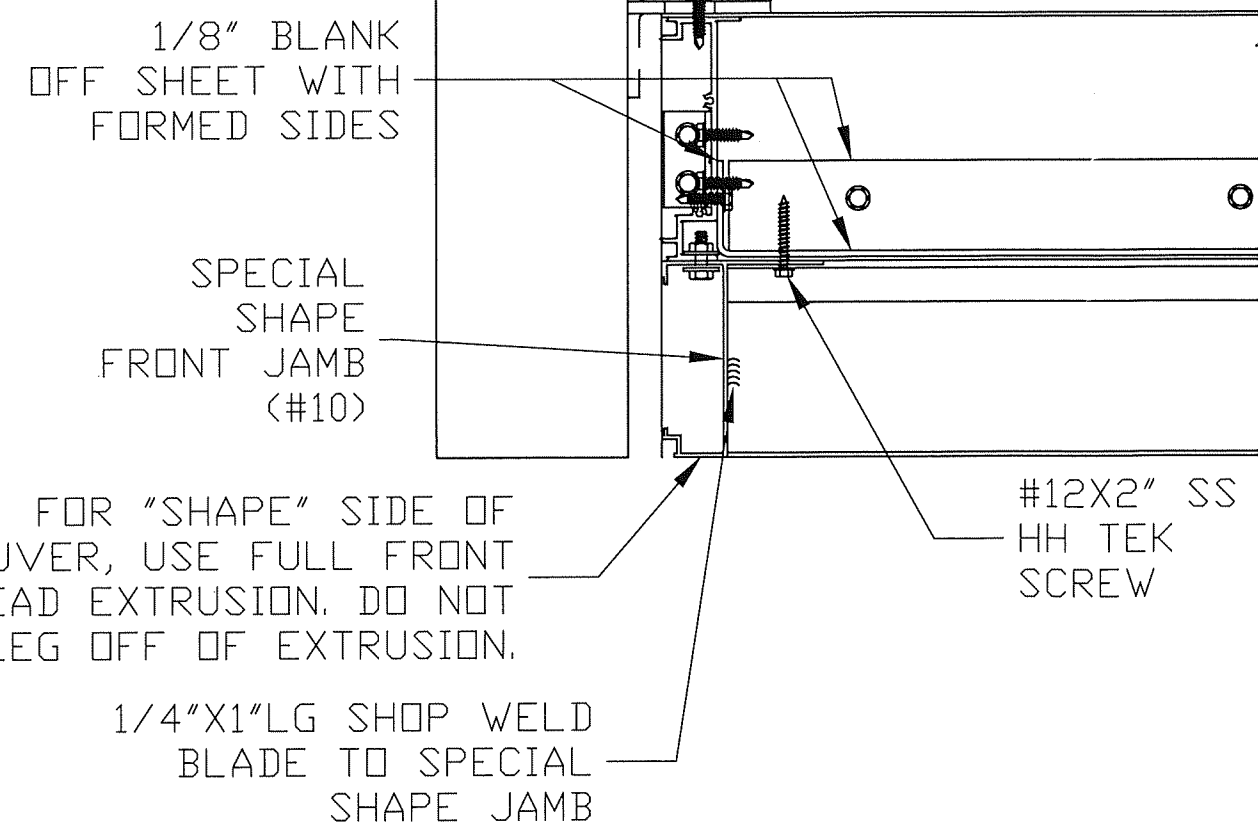
DETAIL **G**
5

DETAIL **H**
5

DETAIL **J**
5

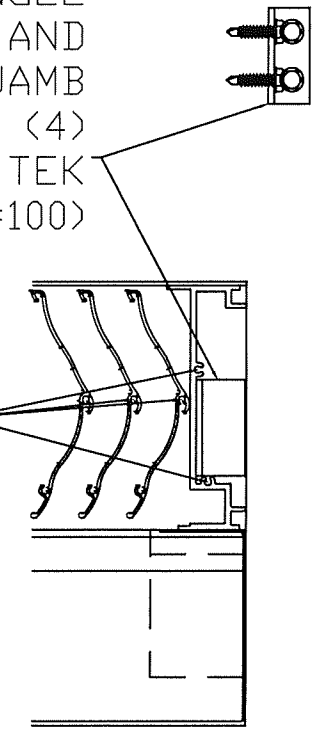
DETAIL **K**
5

SPECIAL SHAPE
LOUVERS ONLY



1" X 1-1/2" X 1/8" X 2"
LG ALUM ANGLE
ATTACHED TO HEAD AND
JAMB, AND SILL AND JAMB
(SECURED WITH (4)
1/4"-14X1"LG SS HH TEK
SCREW, ITEM #100)

#8 X 1-1/2" LG SS
PH SMS
FOR ASSEMBLING
JAMBS AND BLADES
TO HEAD AND SILL
(REAR COMPONENTS
ONLY)



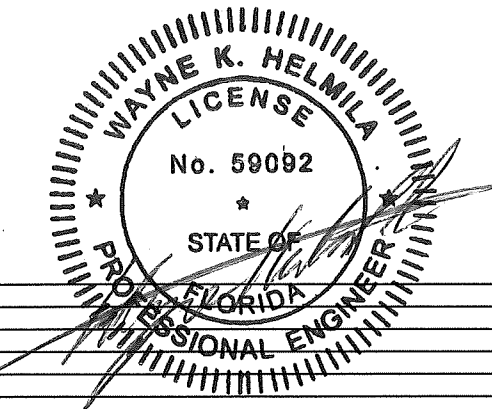
REVISION: 5	01-23-24
DATE: 11-20-15	
SHEET: 5 OF 13	
DRW NO: RD-1457	
PROJECT: DC-9614 SUBMITTAL DRAWINGS	
TITLE: LOUVER ASSEMBLY DETAILS PART B	
SCALE: 3" = 1'-0"	
DRW BY: R. GEIST	

Construction Specialties™
49 MEEKER AVENUE, CRANFORD, NEW JERSEY
PHONE: 1-800-631-7379 / FAX: 908-272-5844



PRODUCT REVISED
 as complying with the Florida
 Building Code
 NOA-No. 24-0226.05
 Expiration Date 07/28/2026
 By *[Signature]*
 Miami-Dade Product Control

RICE
 ENGINEERING
 105 School Creek Trail
 Luxemburg, WI 54217
 Phone: (920) 617-1042
 Fax: (920) 617-1100
 www.rice-inc.com
 Florida Firm No: F-01000005061
 Certificate of Authorization: #9090
 Wayne K. Helmila
 Registration No: 59092



JAN 23 2024

1	REAR HEAD	6063-T6 ALUMINUM 0.080 THK
2	REAR SILL	6063-T6 ALUMINUM 0.080 THK
3	REAR JAMB/MULLION HALF	6063-T6 ALUMINUM 0.125 THK
4	REAR MULLION HALF	6063-T6 ALUMINUM 0.125 THK
5	FRONT HEAD AND SILL	6063-T6 ALUMINUM 0.080 THK
6	FRONT JAMB ANGLE	1-3/8"x4.077"x0.080" FORMED ALUMINUM ANGLE
7	FRONT BLADE BRACE	6063-T6 ALUMINUM - 1" WIDE AT JAMBS, 2" WIDE AT MULLIONS
8	REAR BLADE	6063-T6 ALUMINUM 0.060 THK
9	FRONT BLADE	6063-T6 ALUMINUM 0.068 THK
10	SPECIAL SHAPE FRONT JAMB	6063-T6 ALUMINUM 0.080 THK
11	MULLION REINFORCING CHANNEL	5" X 2.212# ALUMINUM ASSOCIATION CHANNEL 6061-T6
12	SHEET SPLICE MID SUPPORT	6063-T6 ALUMINUM EXTRUSION TUBE 0.068 MIN. THICKNESS
13	SHEET BLANK OFF	1/8" ALUMINUM SHEET BLANK OFF WITH 2" FORMED SIDES, 1/8" MINIMUM THICKNESS
14	ALUMINUM SILL PAN	0.050" ALUMINUM SILL PAN, 6" TALL MINIMUM
50	JAMB AND MID SPAN ALUM. CLIP ANGLE	3"x2"x1/4"x6" LG 6061-T6 ALUMINUM (WOOD SUBSTRATE)
51	ALUM. JAMB CLIP ANGLE	3"x2"x1/4"x4" LG 6061-T6 ALUMINUM (STRUCTURAL STEEL, CONCRETE AND CMU SUBSTRATES)
52	ALUM. JAMB SHELF ANGLE	6"x4"x3/8"x4-1/2" LG 6061-T6 ALUMINUM (CONCRETE SUBSTRATE)
53	ALUM. JAMB SHELF ANGLE	6"x4"x3/8"x10" LG 6061-T6 ALUMINUM (CMU SUBSTRATE)
54	ALUM. JAMB CLIP ANGLE	3"x2"x1/4"x4" LG 6061-T6 ALUMINUM (STEEL STUD AND ALUMINUM SUBSTRATES)
55	ALUM CLIP ANGLE (MID-SPAN JAMB TO MULLION)	3"x2"x1/4"x6" LG 6061-T6 ALUMINUM (STEEL STUD SUBSTRATE)
56	ALUM CLIP ANGLE (MID-SPAN JAMB TO MULLION)	3"x2"x1/4"x6" LG 6061-T6 ALUMINUM (STRUCTURAL STEEL AND CMU SUBSTRATE)
57	ALUM CLIP ANGLE (MID-SPAN JAMB TO MULLION)	3"x3"x1/4"x6" LG 6061-T6 ALUMINUM (CONCRETE SUBSTRATE)
58	ALUM. SHELF ANGLE (MID-SPAN JAMB TO MULLION)	6"x4"x3/8"x6" LG 6061-T6 ALUMINUM (CONCRETE SUBSTRATE)
59	ALUM. SHELF ANGLE (MID-SPAN JAMB TO MULLION)	6"x6"x3/8"x10" LG 6061-T6 ALUMINUM (CMU SUBSTRATE)
60	ALUM CLIP ANGLE (MID-SPAN JAMB TO MULLION)	3"x2"x1/4"x6" LG 6061-T6 ALUMINUM (ALUMINUM SUBSTRATE)
61	ALUM CLIP ANGLE (MID-SPAN JAMB TO MULLION)	6"x4"x3/8"x4" LG 6061-T6 ALUMINUM (CONCRETE SUBSTRATE)
63	ALUM. MULLION CLIP ANGLE	4"x4"x1/4"x11" LG 6061-T6 ALUMINUM (STEEL STUD SUBSTRATE)
64	ALUM. MULLION CLIP ANGLE	4"x4"x1/4"x11" LG 6061-T6 ALUMINUM (STRUCTURAL STEEL SUBSTRATE)
65	ALUM. MULLION CLIP ANGLE	4"x4"x1/4"x11" LG 6061-T6 ALUMINUM (CONCRETE SUBSTRATE)
66	ALUM. MULLION SHELF ANGLE	6"x4"x3/8"x27" LG 6061-T6 ALUMINUM (CONCRETE SUBSTRATE)
67	ALUM. MULLION CLIP ANGLE	4"x4"x1/4"x20" LG 6061-T6 ALUMINUM (CMU SUBSTRATE)
68	ALUM. MULLION SHELF ANGLE	8"x6"x5/8"x32" LG 6061-T6 ALUMINUM (CMU SUBSTRATE)
69	ALUM. MULLION CLIP ANGLE	4"x4"x1/4"x20" LG 6061-T6 ALUMINUM (WOOD SUBSTRATE)
70	ALUM. MULLION CLIP ANGLE	4"x4"x1/4"x11" LG 6061-T6 ALUMINUM (ALUMINUM SUBSTRATE)
71	ALUM. MULLION CLIP ANGLE	6"x4"x3/8"x20" LG 6061-T6 ALUMINUM (CONCRETE SUBSTRATE)
72	ALUM. SHIM PLATE (SHIPPED WITH #68)	10"x1/4"x32" LG 5052-H32 ALUMINUM (CMU SUBSTRATE)
80	STEEL STUD	16 GA MINIMUM GALVANIZED STRUCTURAL STEEL STUD, Fy=33Ksi
81	STRUCTURAL STEEL	1/8" THK MIN. (ASTM A36)
82	ALUMINUM	1/8" THK. MIN (6063-T5)
83	CONCRETE	4000 LB MIN. CONCRETE - CRACKED, NORMAL WEIGHT
84	CMU	GROUT FILLED CONCRETE MASONRY UNIT (2,000 PSI, ASTM C90, TYPE II WITH MIN. 2000 PSI GROUT)
85	WOOD	G = 0.42 MINIMUM, SPRUCE PINE-FIR, 3" MIN. THICKNESS
100	1/4"-14 X 1" LG SELF DRILLING SCREW	THREAD FORMING OR SELF DRILL S.S FOR ALUM. AND FOR STEEL
101	1/4"-14 X 1-1/2" LG SCREW	THREAD FORMING OR SELF DRILL S.S FOR ALUM. AND FOR STEEL
102	1/2" HILTI KWIK BOLT T22	SS 304/316, EMBEDMENT MINIMUM OF 3-5/8"
103	1/2"x3" LAG SCREW	SS WOOD SCREW, MIN. EMBEDMENT 2-3/4", MIN EDGE/END DISTANCE 2" (PREDRILL HOLES @40-70% DIAMETER)
104	1/2" HILTI HIT-HY 270 HYBRID	ADHESIVE ANCHOR W/ASTM F593 CW 304/316 S.S. THREADED RODS, *ONLY ONE ANCHOR PER MASONRY CELL
105	1/2" HILTI KWIK BOLT T22	SS 304/316, EMBEDMENT MINIMUM OF 2-3/8"
110	1/4"-14 X 1-1/2" LG (MIN.) BOLT, NUT & WASHER	1/4 - 14 SS ALLOY GROUP 1, 2 OR 3 CONDITION CW NUT, BOLT AND LOCKWASHER
111	3/8"-12 X 1-1/2" LG (MIN.) NUT AND BOLT	3/8 - 12 S.S. ALLOY GROUP 1, 2, OR 3 CONDITION CW WITH LOCK WASHER
112	#12 SELF DRILLING SCREW	#12-24 x 2" S.S. ELCO BIFLEX SELF DRILLING SCREW WITH NO 5 POINT

*ALL S.S FASTENERS SPECIFIED ON THIS SHEET MUST BE PROVIDED AS SERIES 300 S.S. CONDITION CW, Fy=65 ksi, Fu=110 ksi MINIMUM.

PROJECT: DC-9614- SUBMITTAL DRAWINGS

TITLE: PARTS LIST

SCALE: 3" = 1'-0"

DRW BY: R. GEIST

REVISION: 5 01-23-24

DATE: 11-20-15

SHEET: 6 OF 13

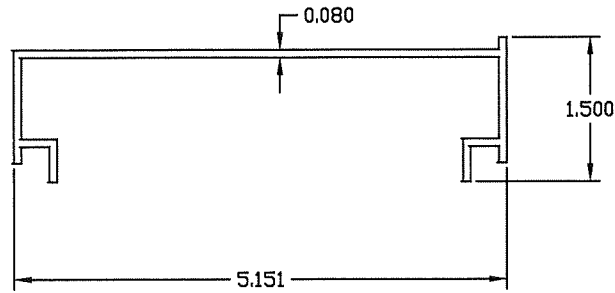
DRW NO.: RD-1457

Construction Specialties™
 49 MEEKER AVENUE, CRANFORD, NEW JERSEY
 PHONE: 1-800-631-7379 / FAX: 908-272-5844

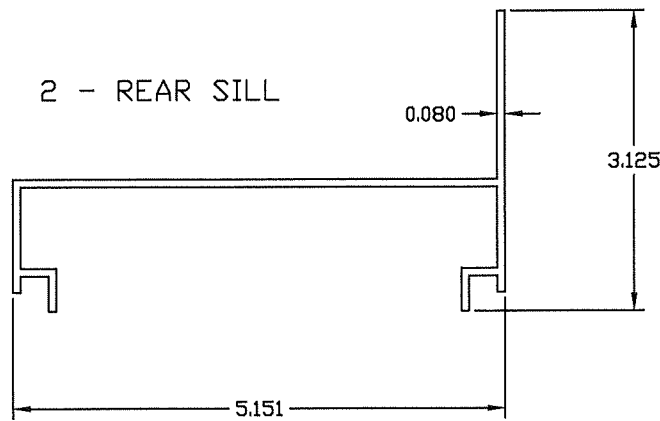


PRODUCT REVISED
 as complying with the Florida
 Building Code
 NOA-No. 24-0226.05
 Expiration Date 07/28/2026
 By *[Signature]*
 Miami-Dade Product Control

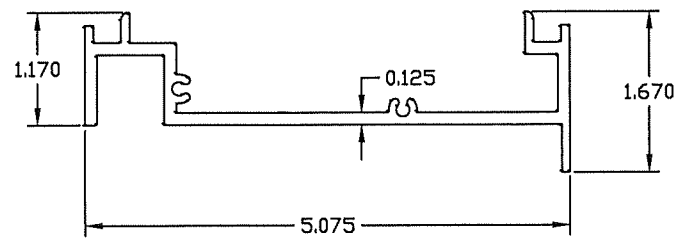
1 - REAR HEAD



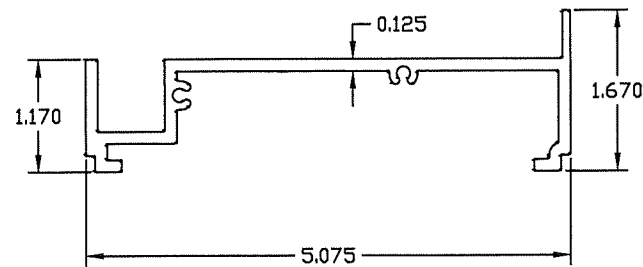
2 - REAR SILL



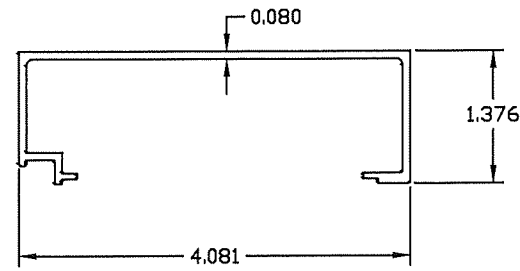
3 - REAR JAMB/MULLION HALF



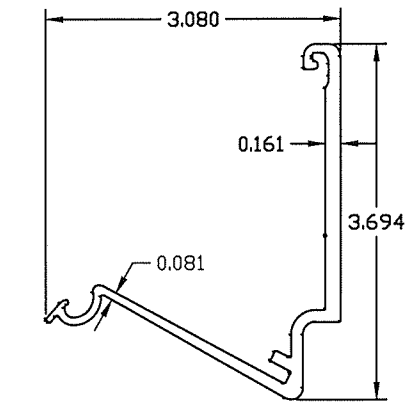
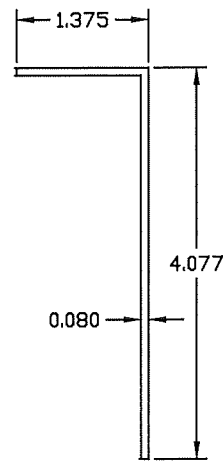
4 - REAR MULLION HALF



5 - FRONT HEAD & SILL



6 - FRONT JAMB ANGLE



7 - FRONT BLADE BRACE

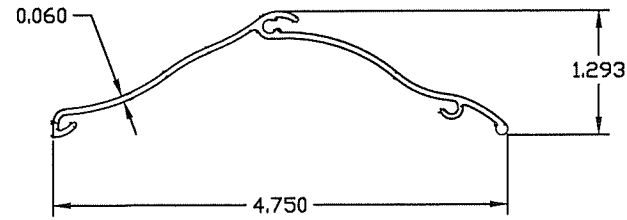
RICE

ENGINEERING

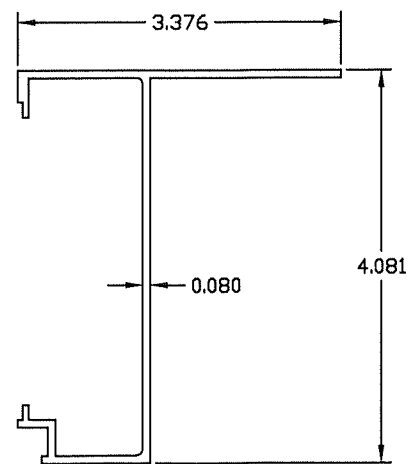
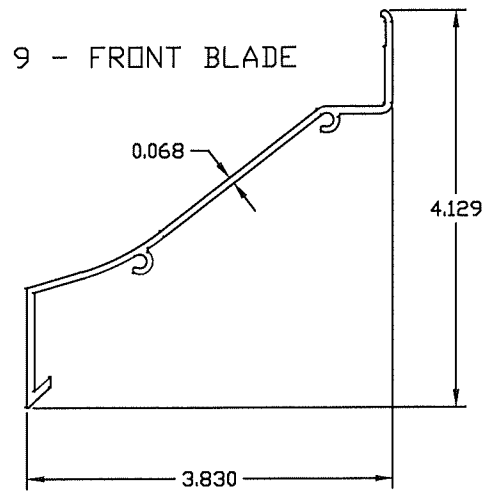
105 School Creek Trail
 Luxemburg, WI 54217
 Phone: (920) 617-1042
 Fax: (920) 617-1100
 www.rice-inc.com

Florida Firm No: F-01000005061
 Certificate of Authorization: #9090
 Wayne K. Helmila
 Registration No: 59092

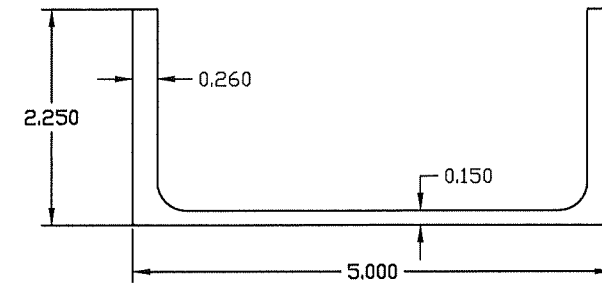
8 - REAR BLADE



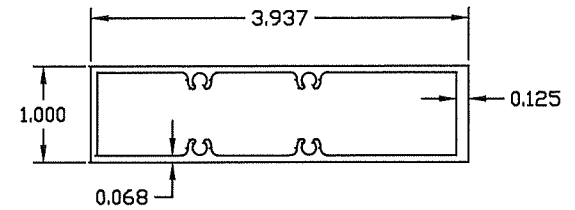
9 - FRONT BLADE



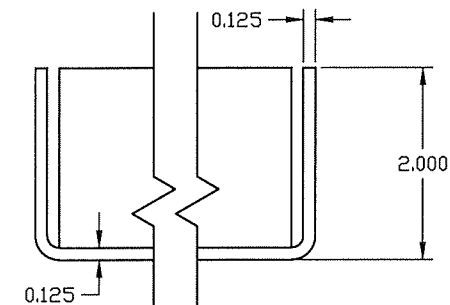
10 - SPECIAL SHAPE FRONT JAMB



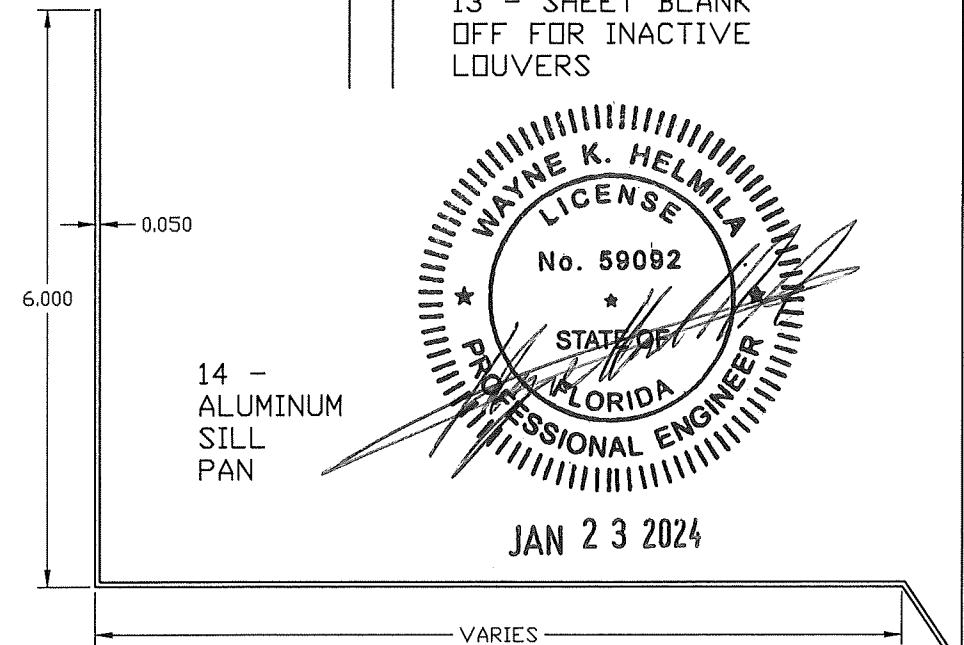
11 - MULLION REINFORCING CHANNEL



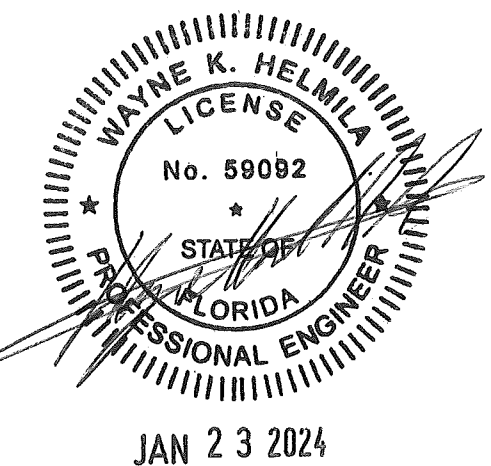
12 - SHEET SPLICE MID SUPPORT



13 - SHEET BLANK OFF FOR INACTIVE LOUVERS



14 - ALUMINUM SILL PAN

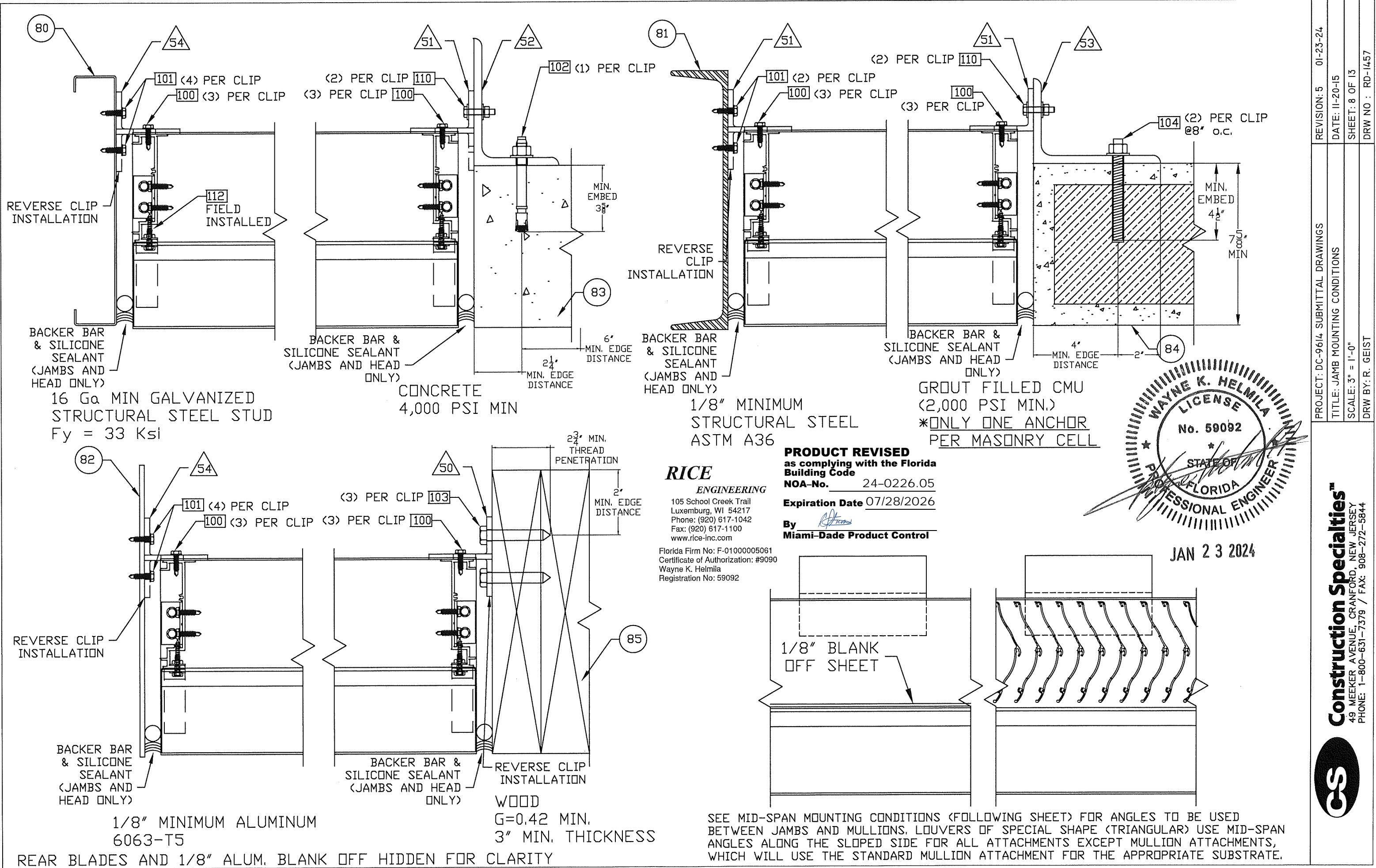


REVISION: 5 01-23-24
 DATE: 11-20-15
 SHEET: 7 OF 13
 DRW NO: RD-1457

PROJECT: DC-9614 SUBMITTAL DRAWINGS
 TITLE: PARTS DRAWING
 SCALE: 6" = 1'-0"
 DRW BY: R. GEIST

Construction Specialties™
 49 MEEKER AVENUE, CRANFORD, NEW JERSEY
 PHONE: 1-800-631-7379 / FAX: 908-272-5844



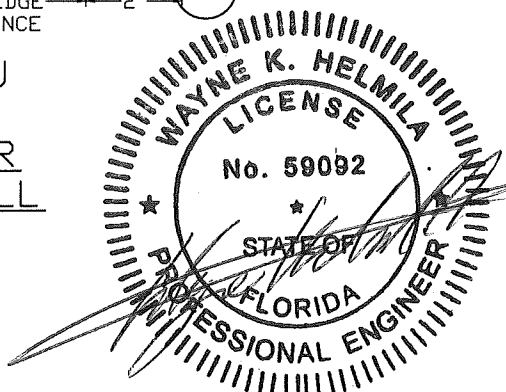


RICE ENGINEERING
 105 School Creek Trail
 Luxemburg, WI 54217
 Phone: (920) 617-1042
 Fax: (920) 617-1100
 www.rice-inc.com

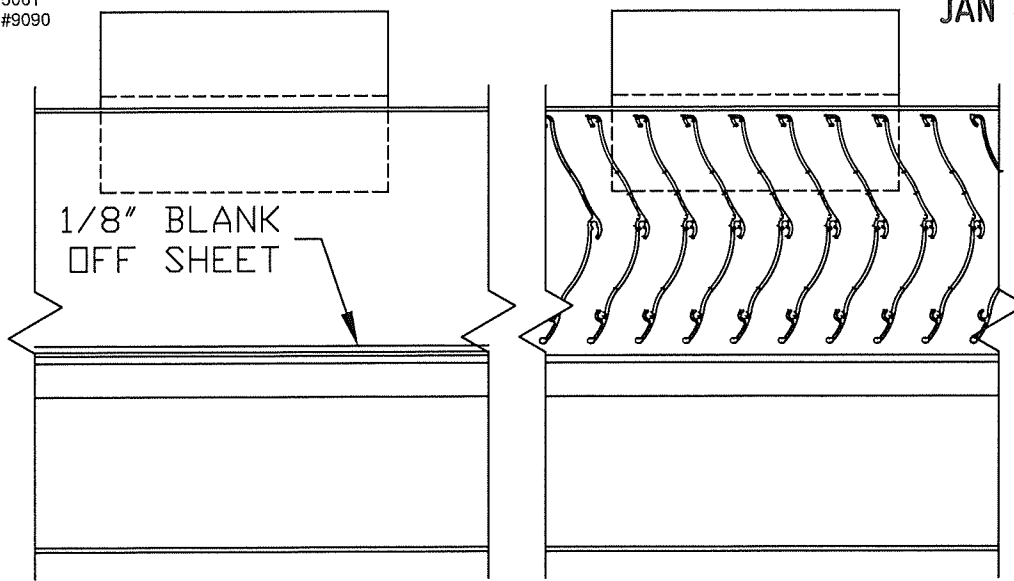
Florida Firm No: F-01000005061
 Certificate of Authorization: #9090
 Wayne K. Helmila
 Registration No: 59092

PRODUCT REVISED
 as complying with the Florida Building Code
 NOA-No. 24-0226.05
 Expiration Date 07/28/2026

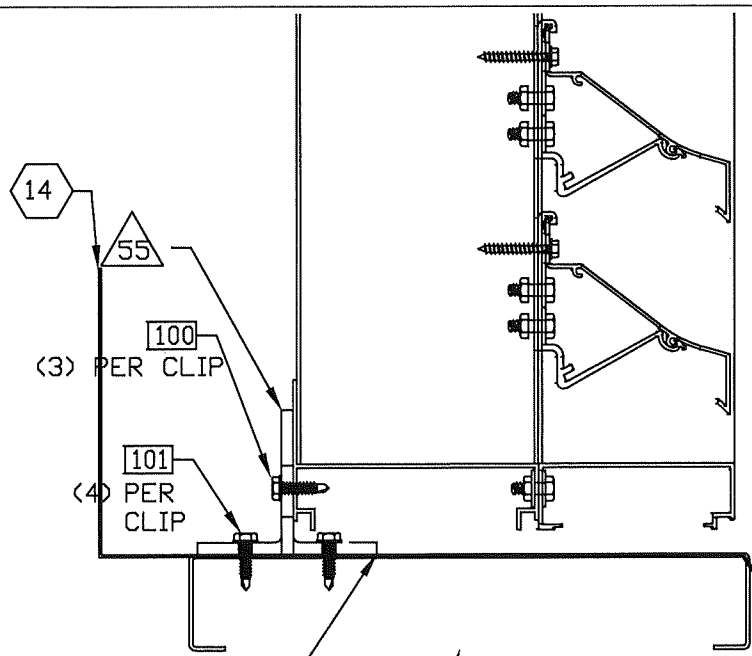
By *[Signature]*
 Miami-Dade Product Control



JAN 23 2024



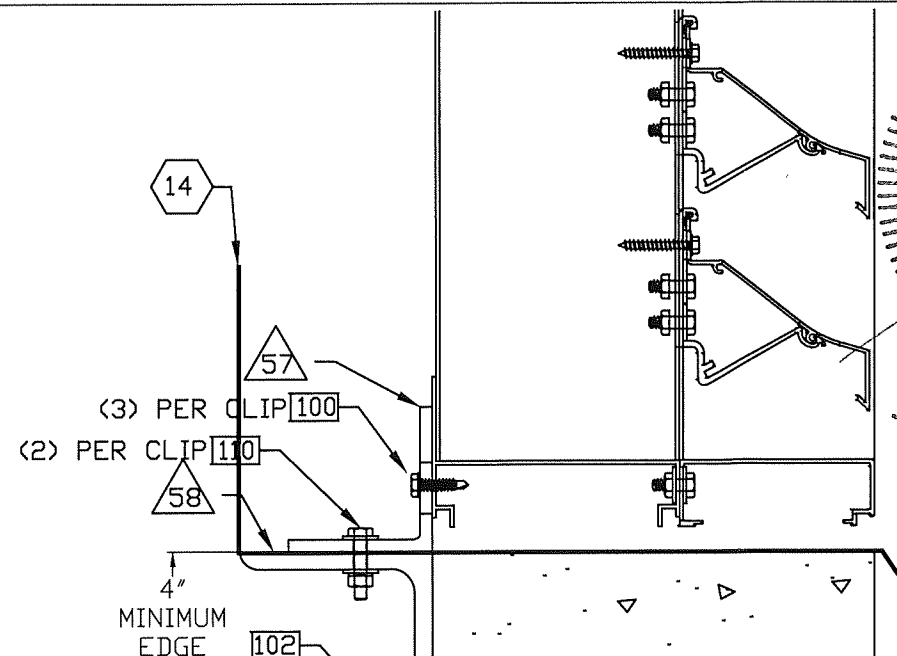
SEE MID-SPAN MOUNTING CONDITIONS (FOLLOWING SHEET) FOR ANGLES TO BE USED BETWEEN JAMBS AND MULLIONS. LOUVERS OF SPECIAL SHAPE (TRIANGULAR) USE MID-SPAN ANGLES ALONG THE SLOPED SIDE FOR ALL ATTACHMENTS EXCEPT MULLION ATTACHMENTS, WHICH WILL USE THE STANDARD MULLION ATTACHMENT FOR THE APPROPRIATE SUBSTRATE.



REVERSE CLIP INSTALLATION

16 Ga MIN GALVANIZED STRUCTURAL STEEL STUD
 $F_y = 33 \text{ Ksi}$

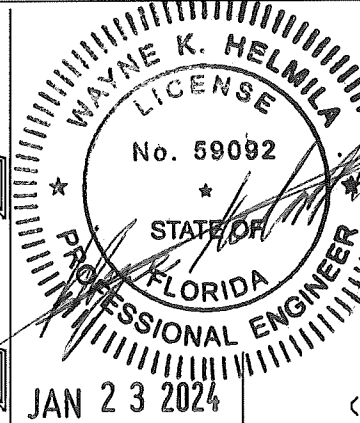
RICE ENGINEERING
 105 School Creek Trail
 Luxemburg, WI 54217
 Phone: (920) 617-1042
 Fax: (920) 617-1100
 www.rice-inc.com
 Florida Firm No: F-0100005061
 Certificate of Authorization: #9090
 Wayne K. Helmila
 Registration No: 59092



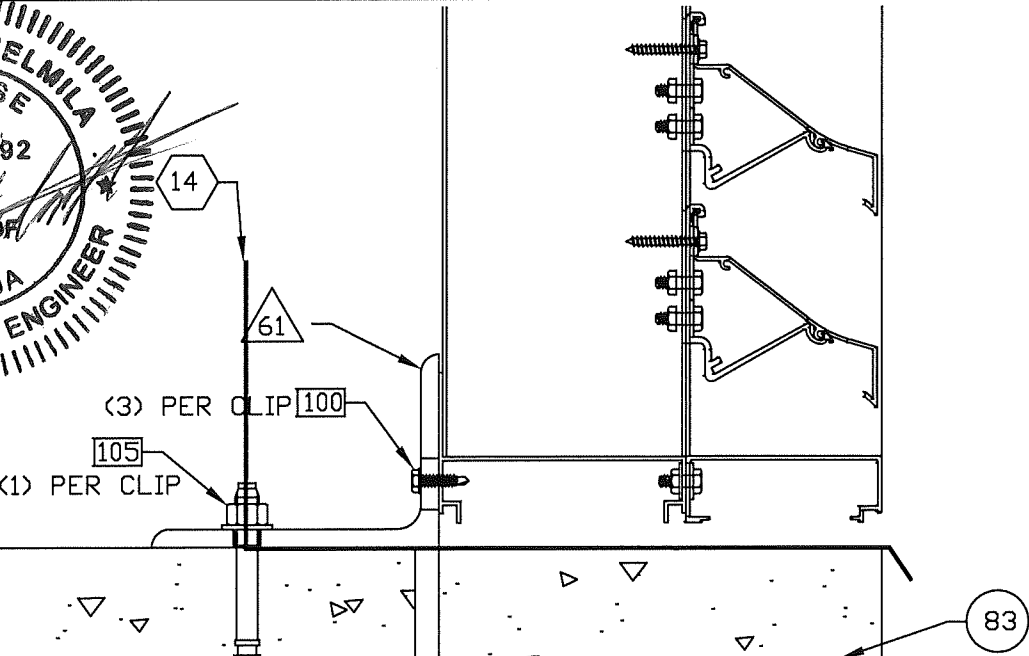
MINIMUM EDGE DISTANCE 4"

CONCRETE 4000 PSI MIN

MIN. EMBED 3 3/8"



MIN. EMBED 2 3/8"

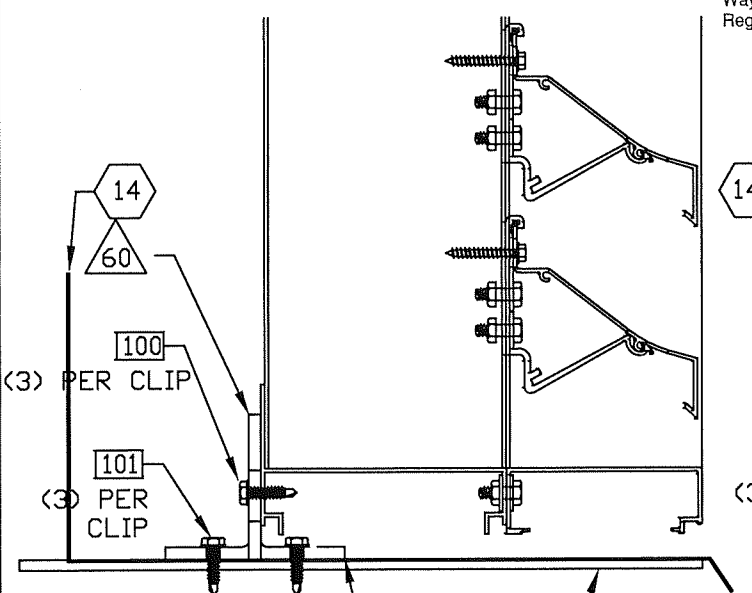


CONCRETE 4000 PSI MIN

3 1/2" MIN. EDGE DISTANCE

4"

PRODUCT REVISED
 as complying with the Florida Building Code
 NOA-No. 24-0226.05
 Expiration Date 07/28/2026
 By Miami-Dade Product Control

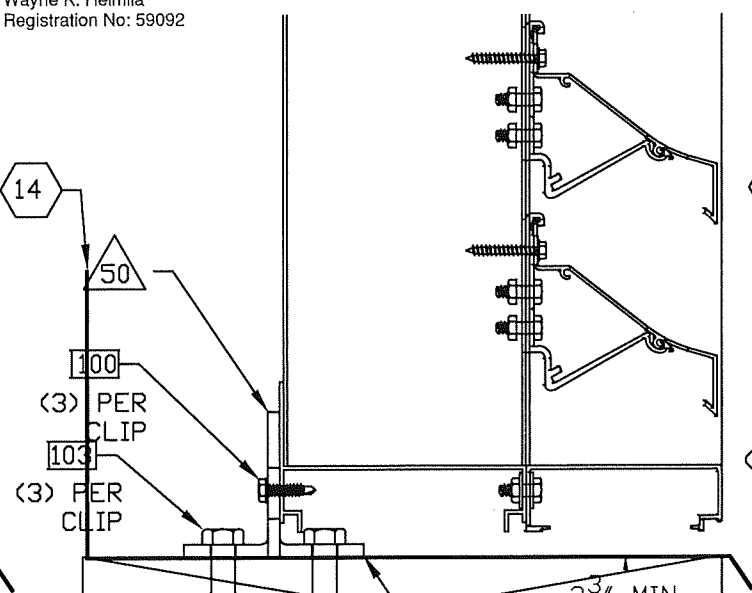


1/8" MINIMUM ALUMINUM 6063-T5

REVERSE CLIP INSTALLATION

2" MIN. EDGE DISTANCE

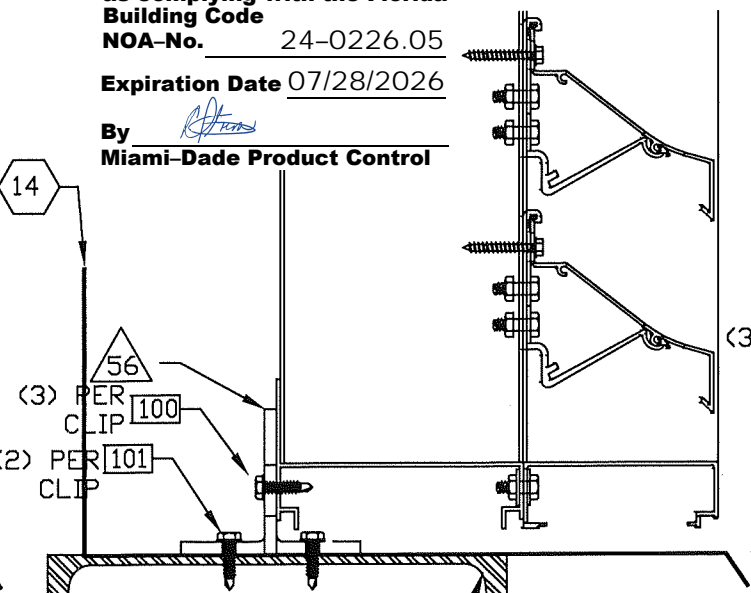
REAR BLADES AND 1/8" ALUM. BLANK OFF HIDDEN FOR CLARITY
 HEAD CONDITIONS ARE OPPOSITE OF WHAT IS SHOWN, SAME ATTACHMENT ANGLES ARE TO BE USED.



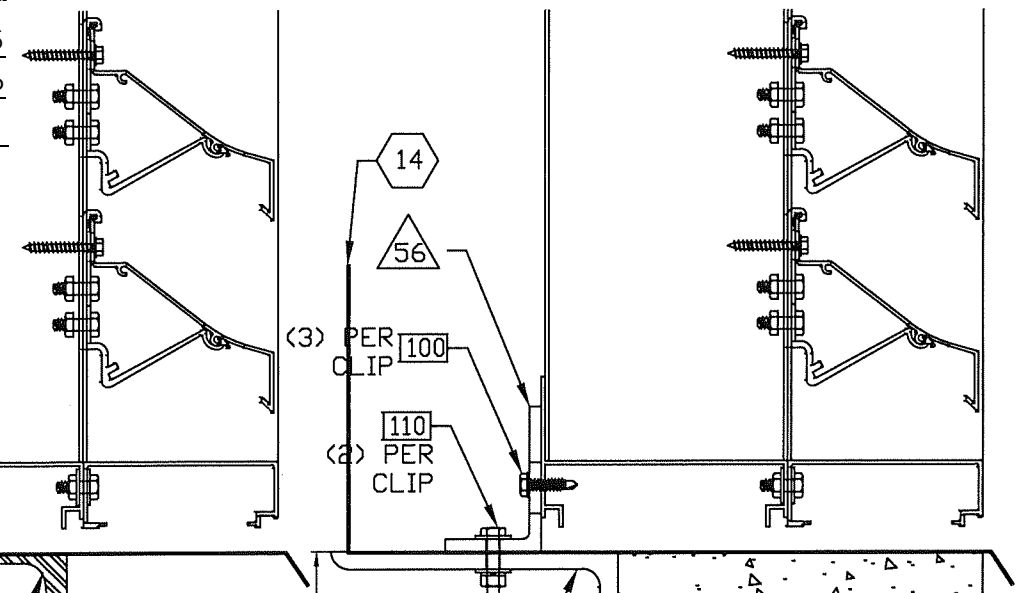
2 3/4" MIN. THREAD PENETRATION

WOOD G=0.42 MIN. 3" MIN. THICKNESS

REVERSE CLIP INSTALLATION



1/8" MINIMUM STRUCTURAL STEEL ASTM A36



GROUT FILLED CMU (2,000 PSI MIN.)
 INSTALL ANCHORS 8" O.C. AND IN CENTER OF CELLS HORIZONTALLY, ONLY ONE ANCHOR PER CELL.
 MIN. EMBED 4 1/2"

REVISION: 5	01-23-24
DATE: 11-20-15	
SHEET: 9 OF 13	
DRW NO: RD-1457	
PROJECT: DC-9614 SUBMITTAL DRAWINGS	
TITLE: MID SPAN MOUNTING CONDITIONS	
SCALE: 3" = 1'-0"	
DRW BY: R. GEIST	

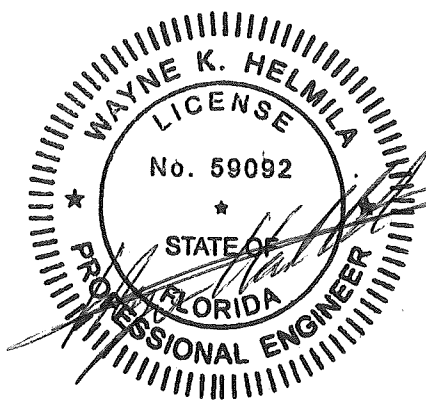
Construction Specialties™
 49 MEEKER AVENUE, CRANFORD, NEW JERSEY
 PHONE: 1-800-631-7379 / FAX: 908-272-5844



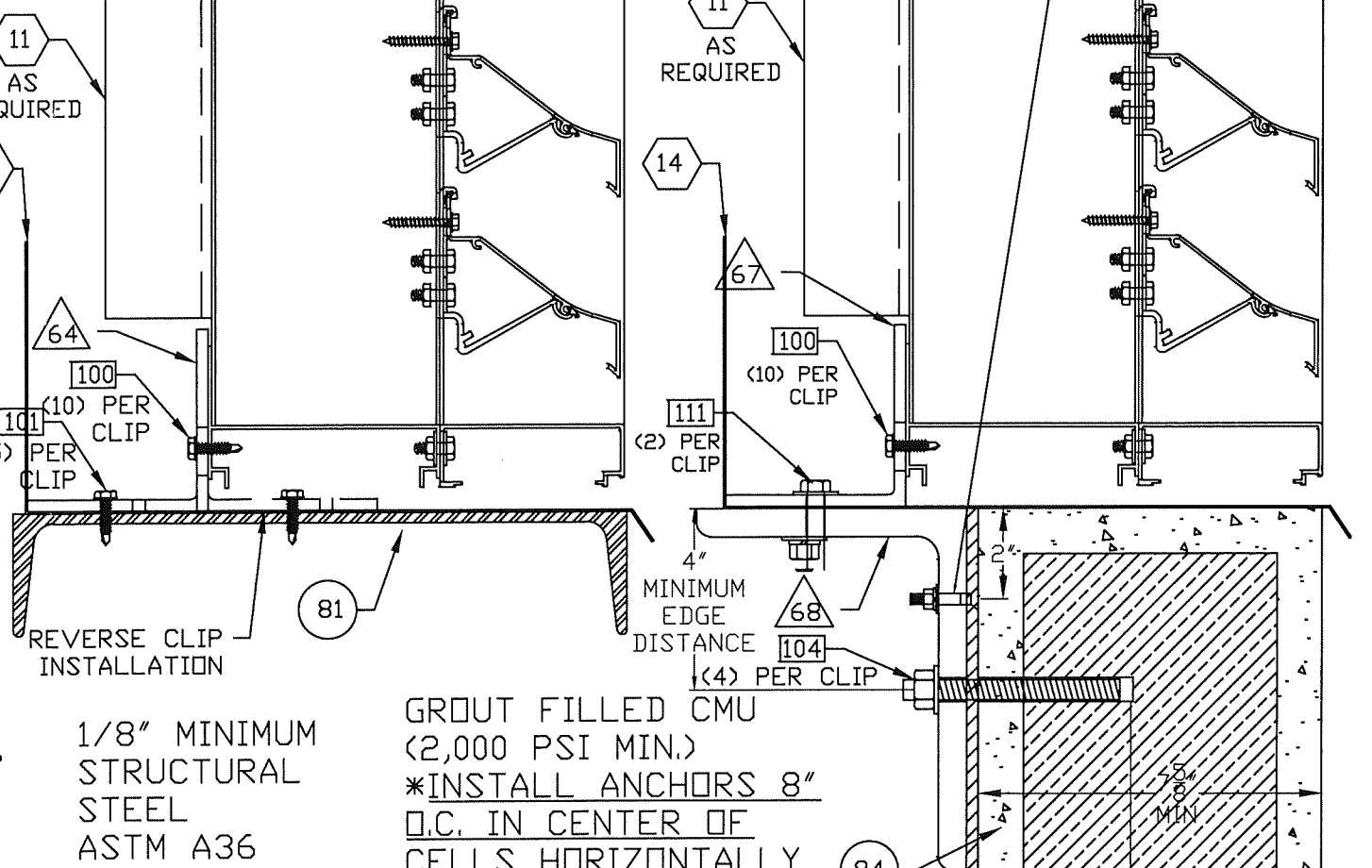
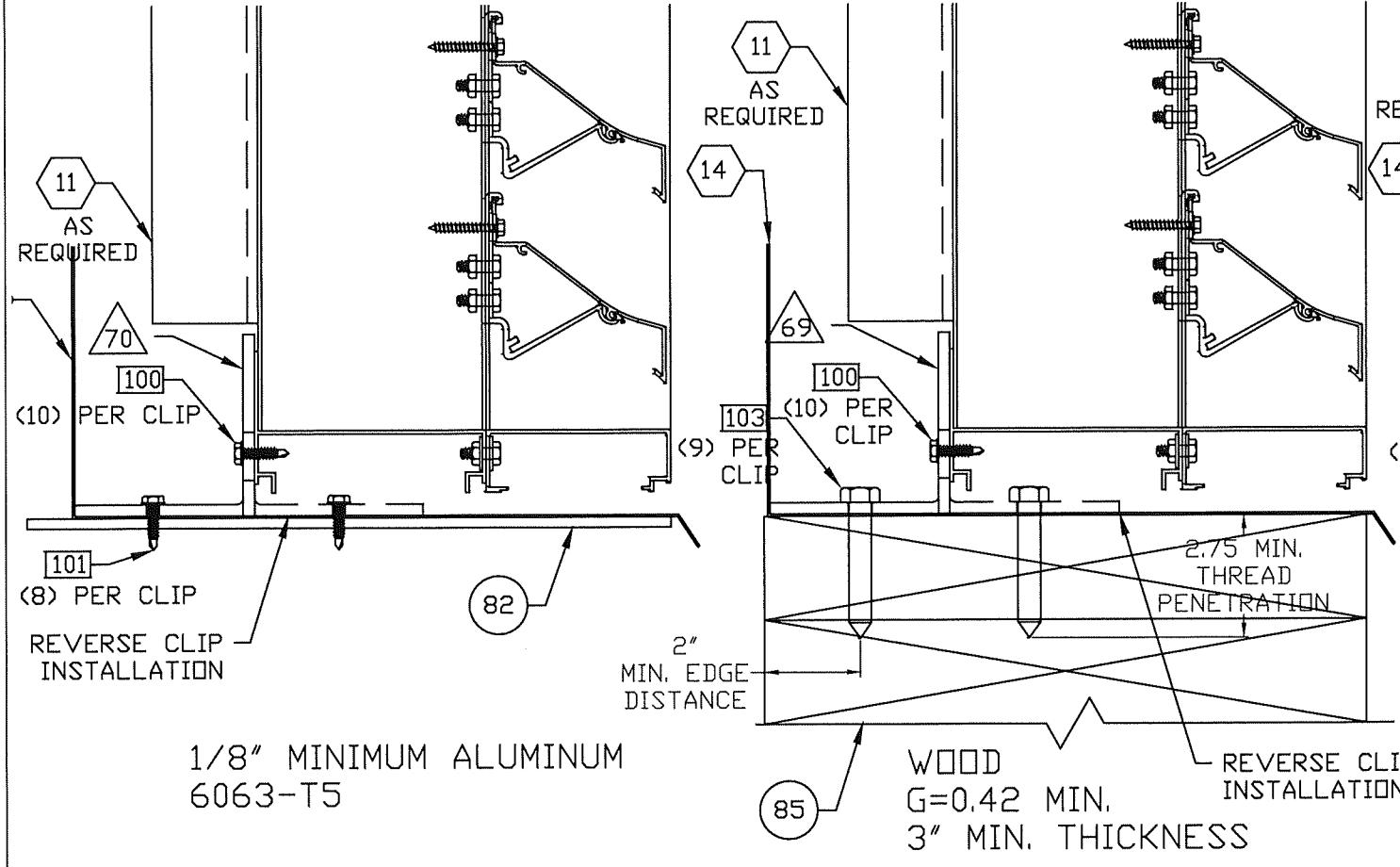
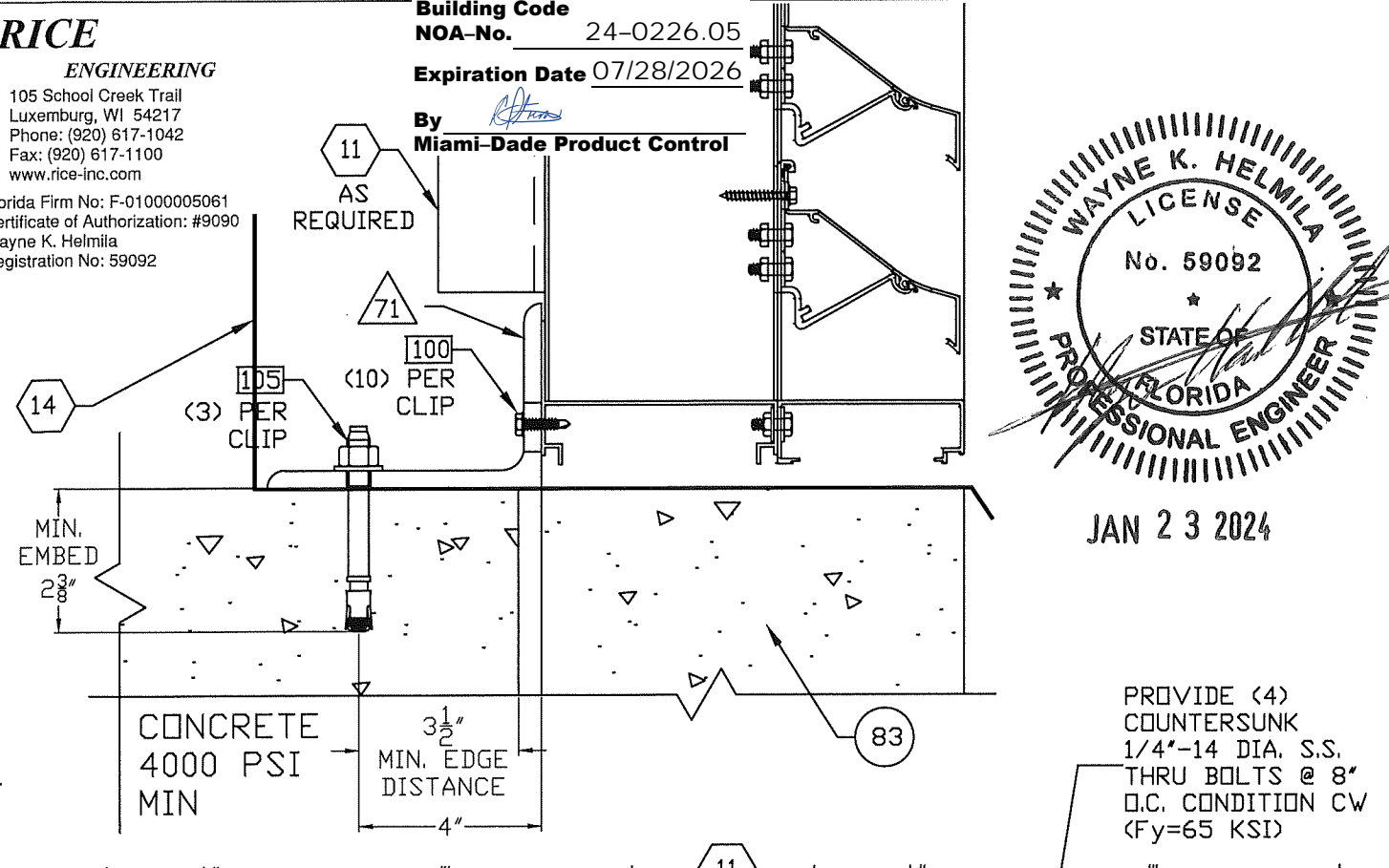
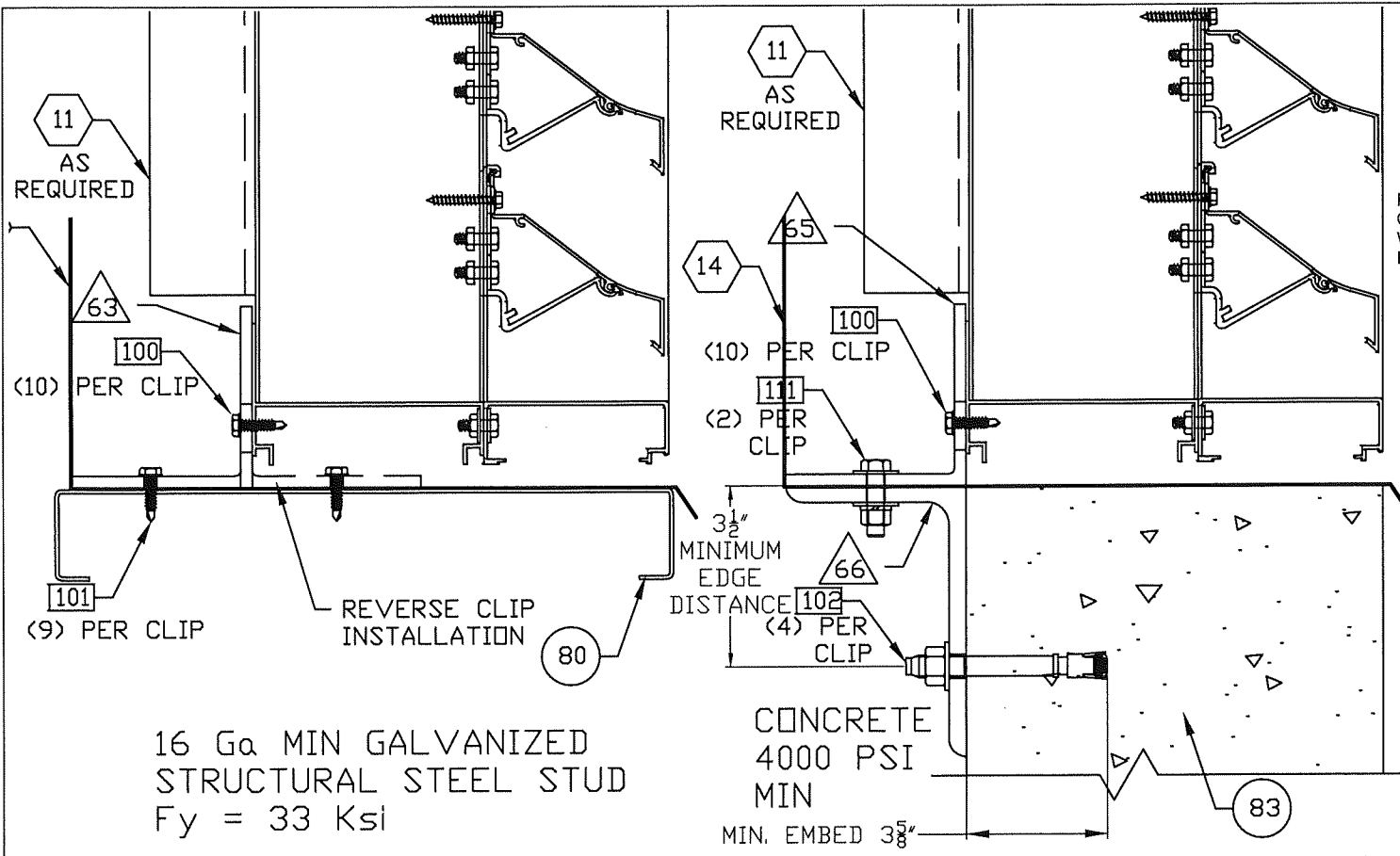
PRODUCT REVISED
 as complying with the Florida
 Building Code
 NOA-No. 24-0226.05
 Expiration Date 07/28/2026

RICE
 ENGINEERING
 105 School Creek Trail
 Luxemburg, WI 54217
 Phone: (920) 617-1042
 Fax: (920) 617-1100
 www.rice-inc.com
 Florida Firm No: F-01000005061
 Certificate of Authorization: #9090
 Wayne K. Helmila
 Registration No: 59092

By *[Signature]*
 Miami-Dade Product Control



JAN 23 2024



REAR BLADES AND 1/8" ALUM. BLANK OFF HIDDEN FOR CLARITY
 HEAD CONDITIONS ARE OPPOSITE OF WHAT IS SHOWN, SAME ATTACHMENT
 ANGLES ARE TO BE USED.

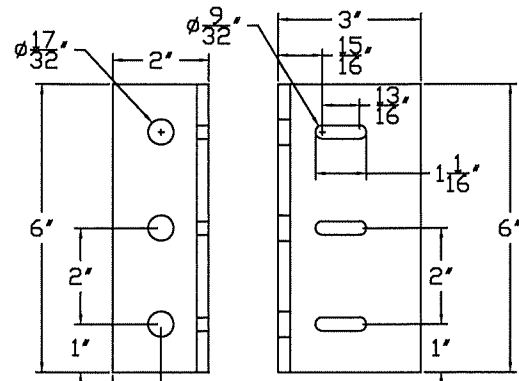
GROUT FILLED CMU
 (2,000 PSI MIN.)
 *INSTALL ANCHORS 8"
 O.C. IN CENTER OF
 CELLS HORIZONTALLY
 ONLY ONE ANCHOR
 PER MASONRY CELL

PROJECT: DC-9614 SUBMITTAL DRAWINGS
 TITLE: MULLION MOUNTING CONDITIONS
 SCALE: 3" = 1'-0"
 DRW BY: R. GEIST

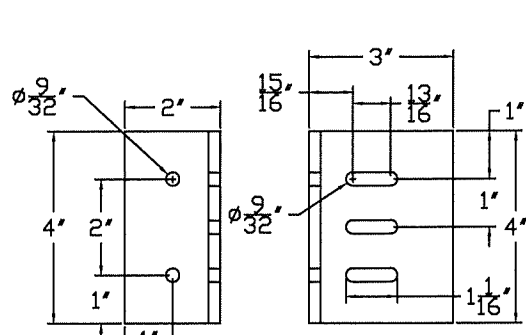
REVISION: 5 01-23-24
 DATE: 11-20-15
 SHEET: 10 OF 13
 DRAW NO.: RD-1457

Construction Specialties™
 49 MEEKER AVENUE, CRANFORD, NEW JERSEY
 PHONE: 1-800-631-7379 / FAX: 908-272-5844

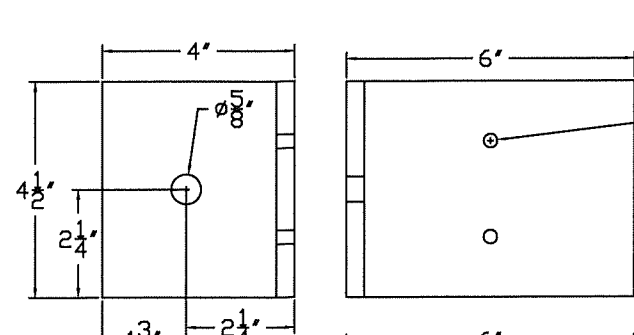




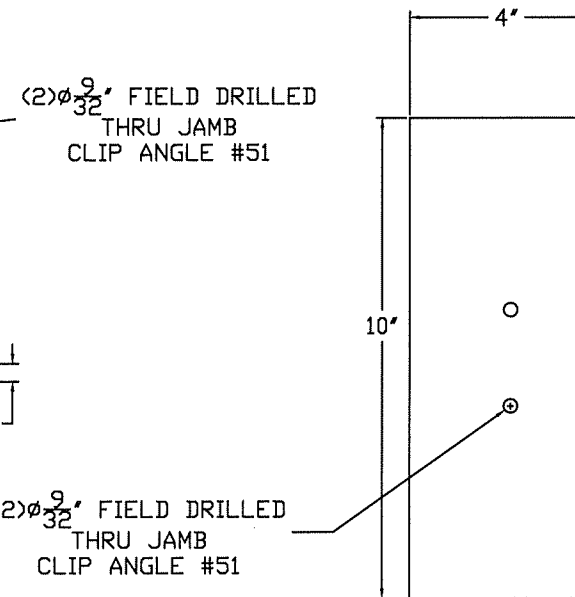
CLIP #50
SUBSTRATE:
WOOD
3"x2"x1/4"x6" LG
JAMB AND MID-SPAN
ALUM. CLIP ANGLE



CLIP #51
SUBSTRATE:
STRUCTURAL STEEL,
CONCRETE AND GROUT
FILLED CMU
3"x2"x1/4"x4" LG
ALUM. JAMB CLIP
ANGLE

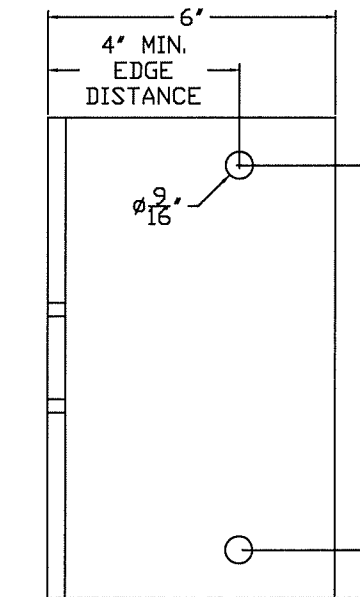


CLIP #52
SUBSTRATE:
CONCRETE
6"x4"x3/8"x4-1/2" LG
ALUM. JAMB SHELF ANGLE
*MUST BE USED WITH
CLIP #51

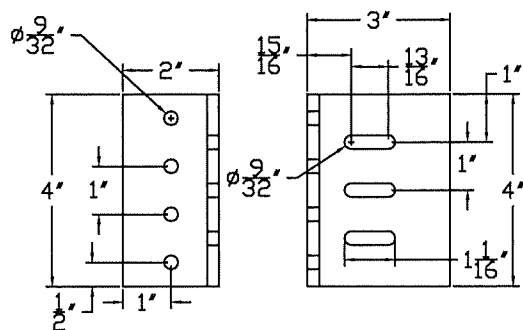


(2) ϕ 9/32" FIELD DRILLED
THRU JAMB
CLIP ANGLE #51

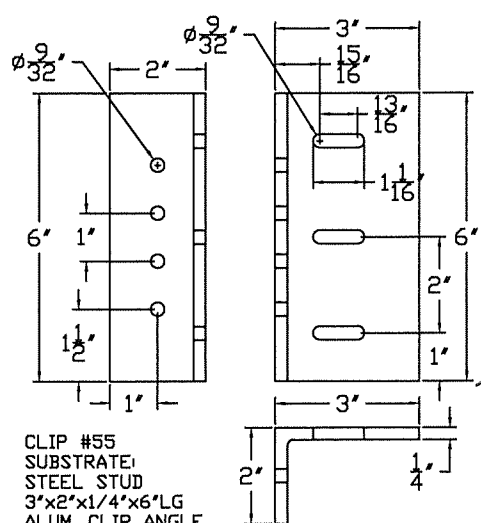
(2) ϕ 9/32" FIELD DRILLED
THRU JAMB
CLIP ANGLE #51



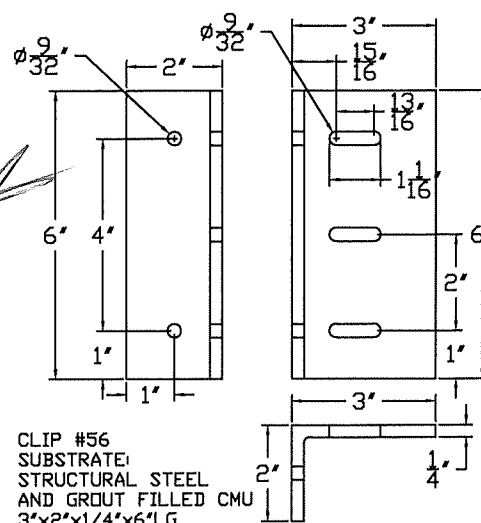
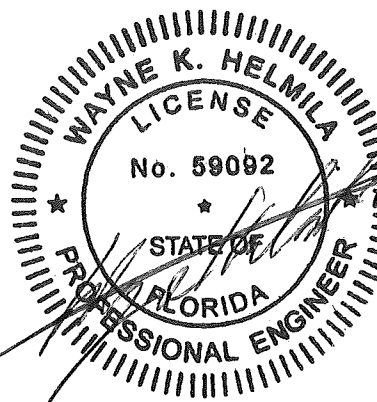
CLIP #53
SUBSTRATE:
GROUT FILLED CMU
6"x4"x3/8"x10" LG
ALUM. JAMB SHELF ANGLE
*MUST BE USED WITH
CLIP #51



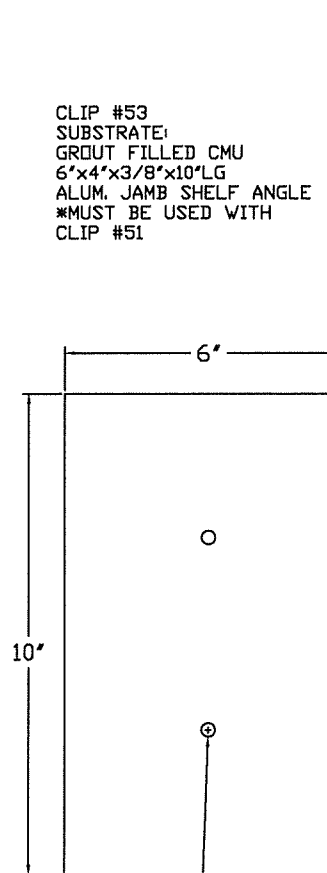
CLIP #54
SUBSTRATE:
STEEL STUD,
AND ALUMINUM
3"x2"x1/4"x4" LG
ALUM. JAMB CLIP
ANGLE



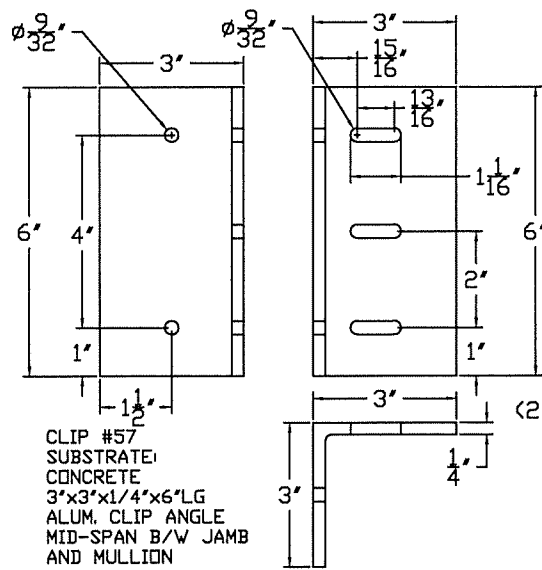
CLIP #55
SUBSTRATE:
STEEL STUD
3"x2"x1/4"x6" LG
ALUM. CLIP ANGLE
MID-SPAN B/W
JAMB AND MULLION



CLIP #56
SUBSTRATE:
STRUCTURAL STEEL
AND GROUT FILLED CMU
3"x2"x1/4"x6" LG
ALUM. CLIP ANGLE
MID-SPAN B/W JAMB
AND MULLION

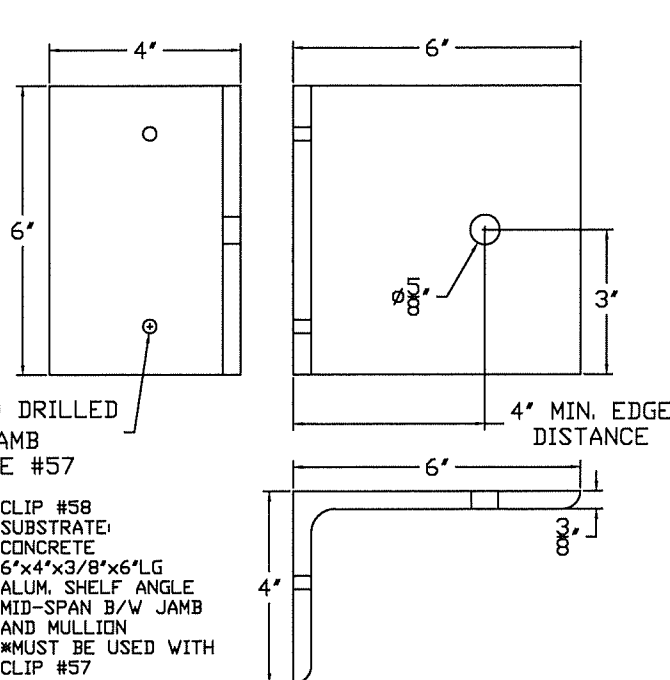


(2) ϕ 9/32" FIELD DRILLED
THRU JAMB
CLIP ANGLE #56

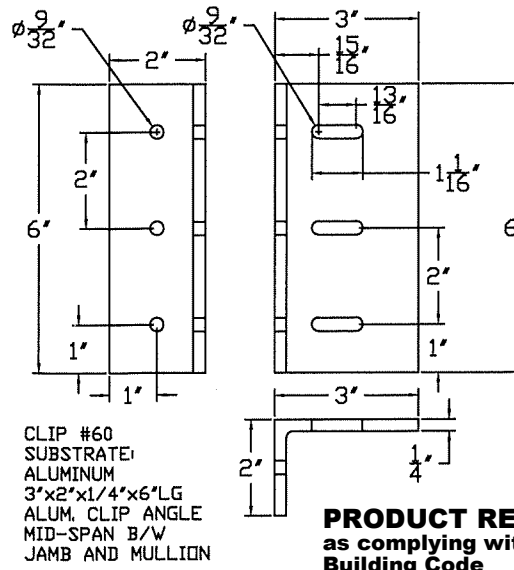


CLIP #57
SUBSTRATE:
CONCRETE
3"x3"x1/4"x6" LG
ALUM. CLIP ANGLE
MID-SPAN B/W JAMB
AND MULLION

(2) ϕ 9/32" FIELD DRILLED
THRU JAMB
CLIP ANGLE #57



CLIP #58
SUBSTRATE:
CONCRETE
6"x4"x3/8"x6" LG
ALUM. SHELF ANGLE
MID-SPAN B/W JAMB
AND MULLION
*MUST BE USED WITH
CLIP #57



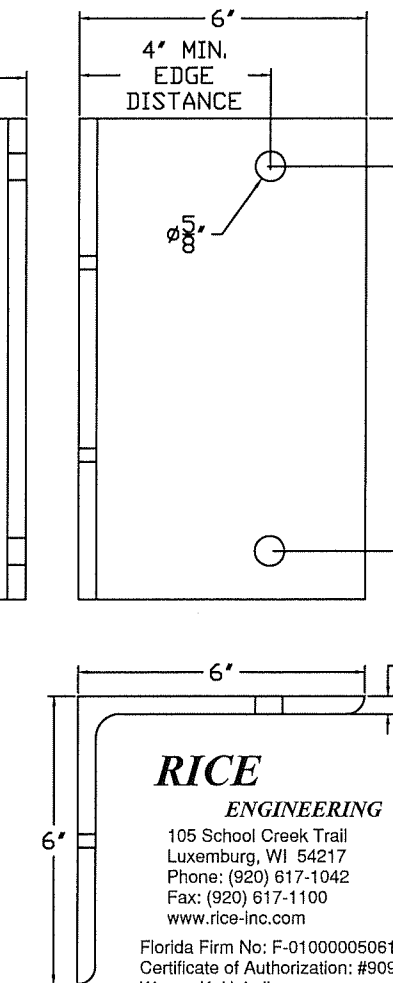
CLIP #60
SUBSTRATE:
ALUMINUM
3"x2"x1/4"x6" LG
ALUM. CLIP ANGLE
MID-SPAN B/W
JAMB AND MULLION

PRODUCT REVISED
as complying with the Florida
Building Code
NOA-No. 24-0226.05

Expiration Date 07/28/2026

By *[Signature]*
Miami-Dade Product Control

CLIP #59
SUBSTRATE:
GROUT FILLED CMU
6"x6"x3/8"x10" LG
ALUM. SHELF ANGLE
MID-SPAN B/W JAMB
AND MULLION
*MUST BE USED WITH
CLIP #56



RICE
ENGINEERING

105 School Creek Trail
Luxemburg, WI 54217
Phone: (920) 617-1042
Fax: (920) 617-1100
www.rice-inc.com

Florida Firm No: F-01000005061
Certificate of Authorization: #9092
Wayne K. Helmla
Registration No: 59092

PROJECT: DC-9614 SUBMITTAL DRAWINGS

TITLE: CLIP ANGLES PART A

SCALE: 3" = 1'-0"

DRW BY: R. GEIST

REVISION: 5 01-23-24

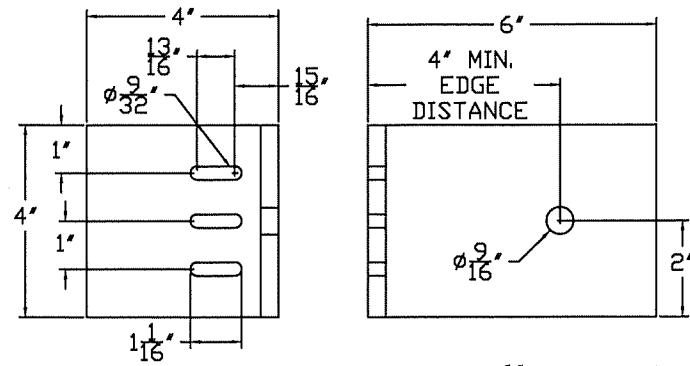
DATE: 11-20-15

SHEET: 11 OF 13

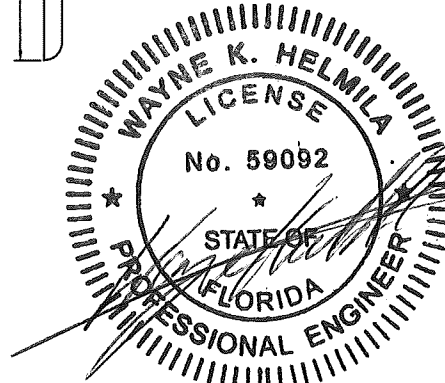
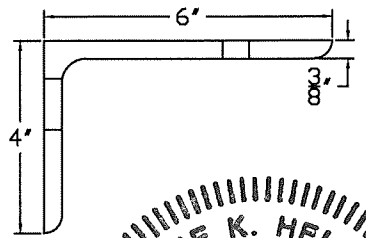
DRW NO: RD-1457

Construction Specialties™
49 MEEKER AVENUE, CRANFORD, NEW JERSEY
PHONE: 1-800-631-7379 / FAX: 908-272-5844

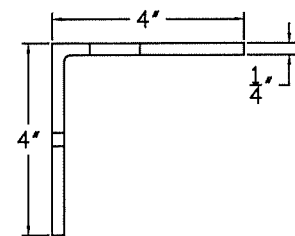
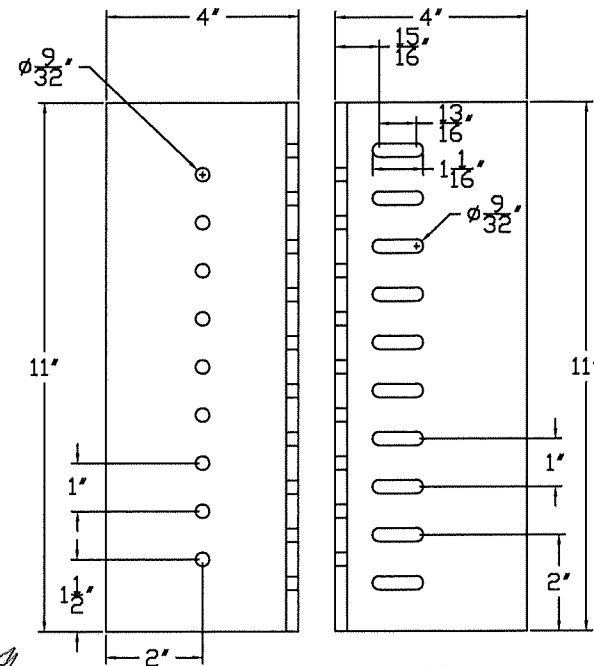




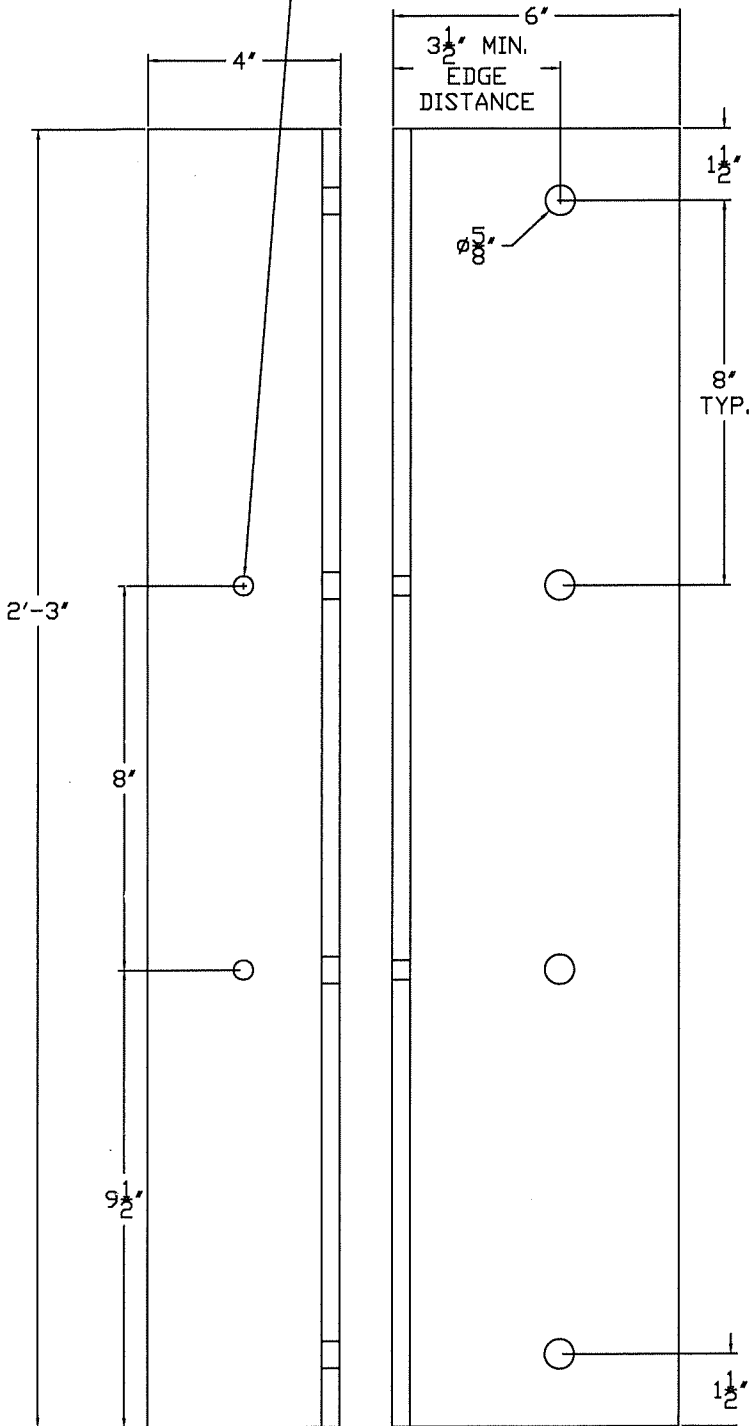
CLIP #61
SUBSTRATE:
CONCRETE
6"x4"x3/8"x4" LG
ALUM. CLIP ANGLE
MID-SPAN B/W JAMB
AND MULLION



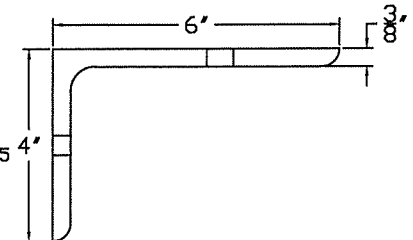
CLIP #63
SUBSTRATE:
STEEL STUD
4"x4"x1/4"x11" LG
ALUM. MULLION CLIP
ANGLE



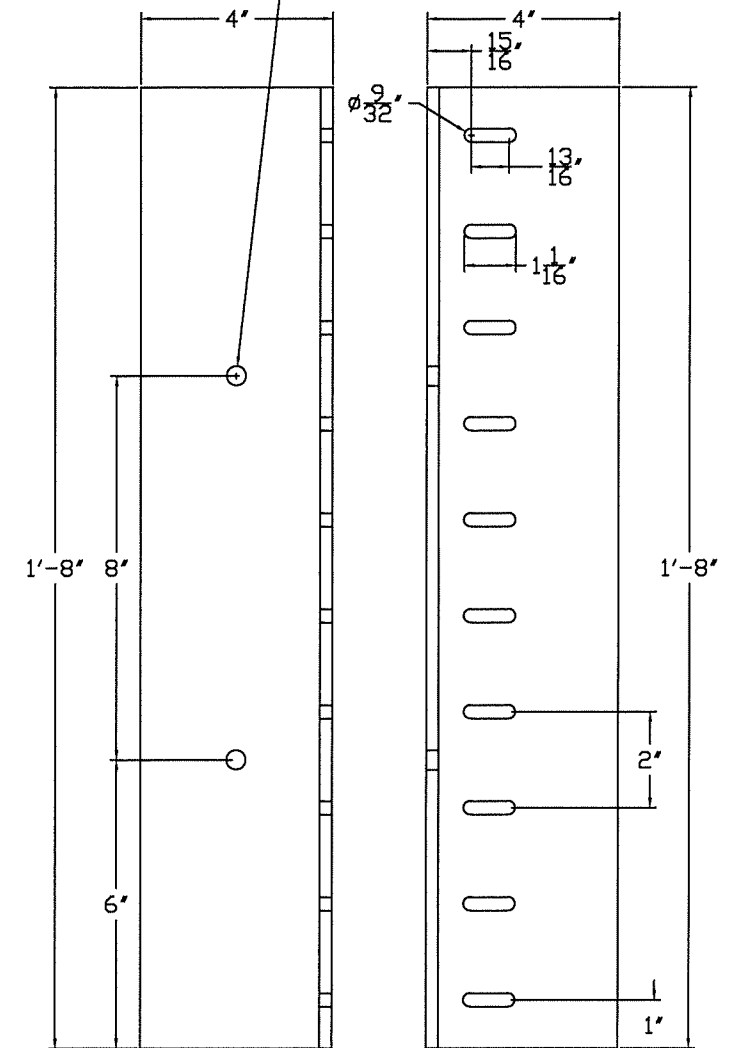
(2) $\phi 13/32$ FIELD DRILLED
THRU JAMB CLIP ANGLE



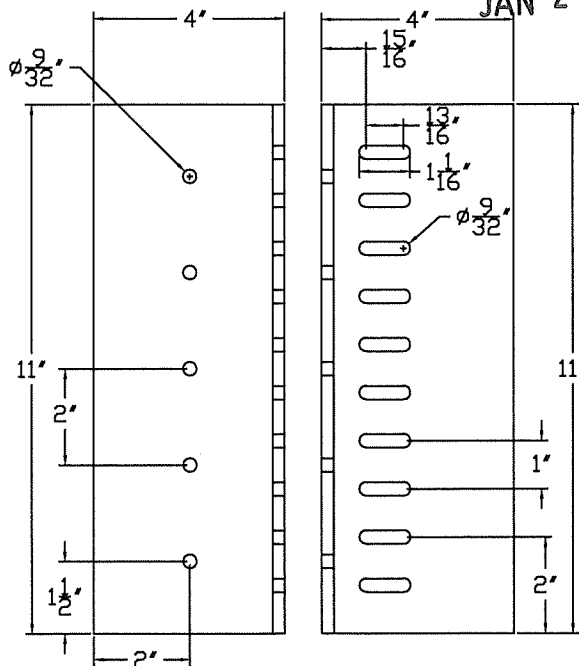
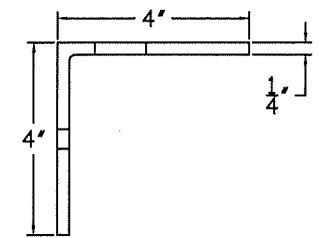
CLIP #66
SUBSTRATE:
CONCRETE
6"x4"x3/8"x27" LG
ALUM. MULLION SHELF ANGLE
*MUST BE USED WITH CLIP #65



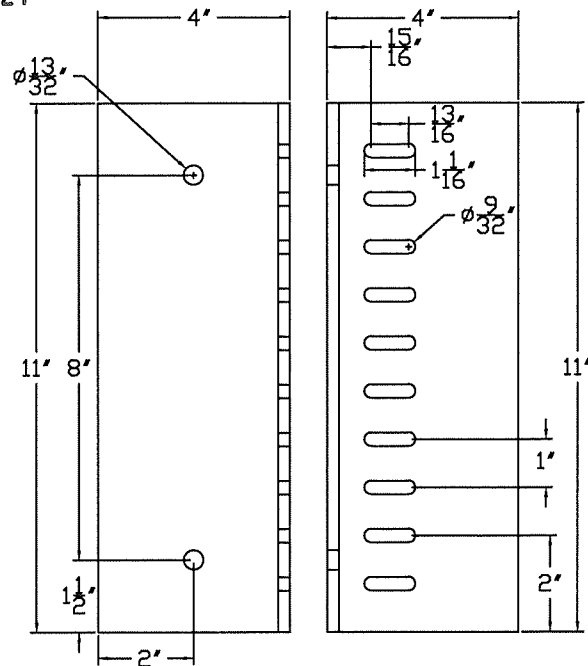
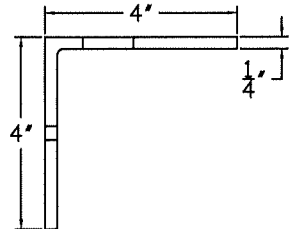
(2) $\phi 13/32$ FIELD DRILLED
THRU JAMB CLIP ANGLE



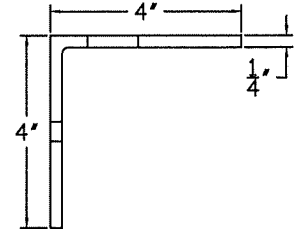
CLIP #67
SUBSTRATE:
GROUT FILLED CMU
4"x4"x1/4"x20" LG
ALUM. MULLION CLIP
ANGLE



CLIP #64
SUBSTRATE:
STRUCTURAL STEEL
4"x4"x1/4"x11" LG
ALUM. MULLION CLIP
ANGLE



CLIP #65
SUBSTRATE:
CONCRETE
4"x4"x1/4"x11" LG
ALUM. MULLION CLIP
ANGLE



RICE

ENGINEERING

105 School Creek Trail
Luxemburg, WI 54217
Phone: (920) 617-1042
Fax: (920) 617-1100
www.rice-inc.com

Florida Firm No: F-0100005061
Certificate of Authorization: #9090
Wayne K. Helmla
Registration No: 59092

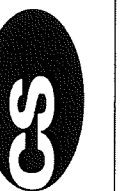
PRODUCT REVISED
as complying with the Florida
Building Code

NOA-No. 24-0226.05

Expiration Date 07/28/2026

By **Miami-Dade Product Control**

Construction Specialties™
49 MEEKER AVENUE, CRANFORD, NEW JERSEY
PHONE: 1-800-631-7379 / FAX: 908-272-5844



PROJECT: DC-9614 SUBMITTAL DRAWINGS

TITLE: CLIP ANGLES PART B

SCALE: 3" = 1'-0"

DRW BY: R. GEIST

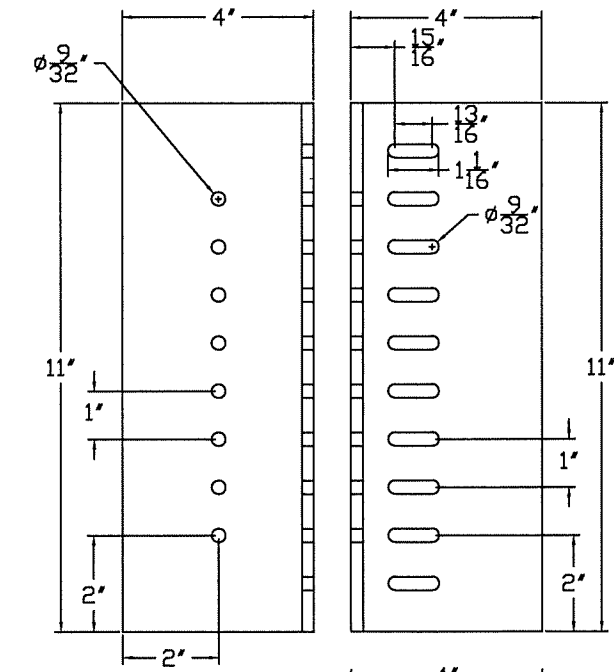
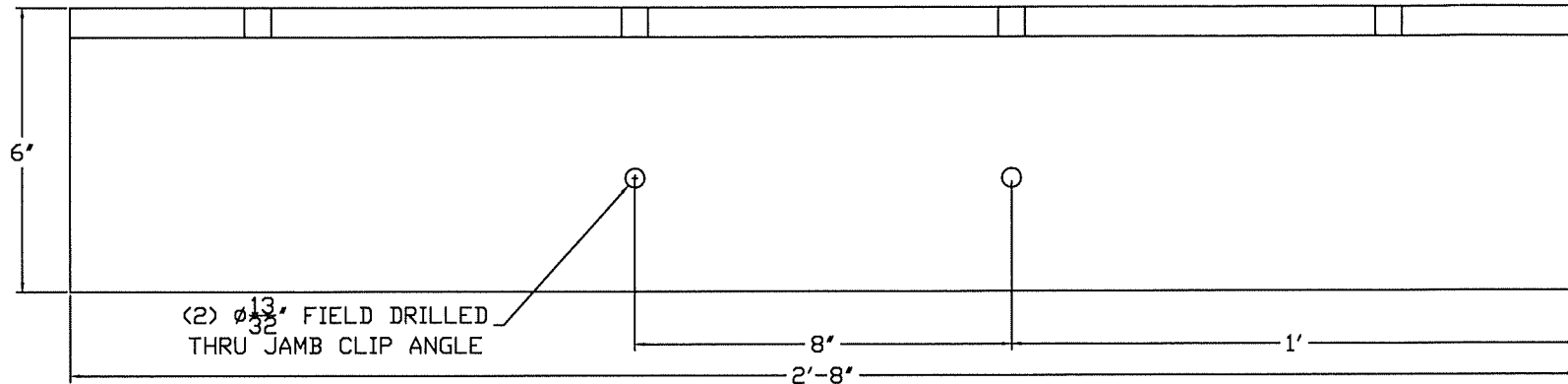
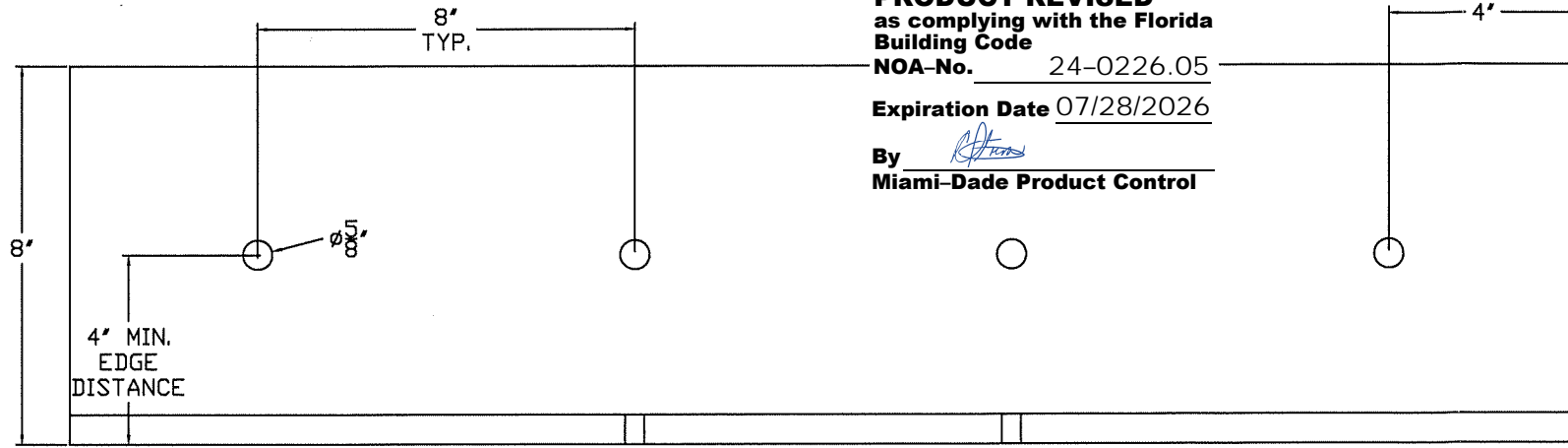
REVISION: 5 01-23-24

DATE: 11-20-15

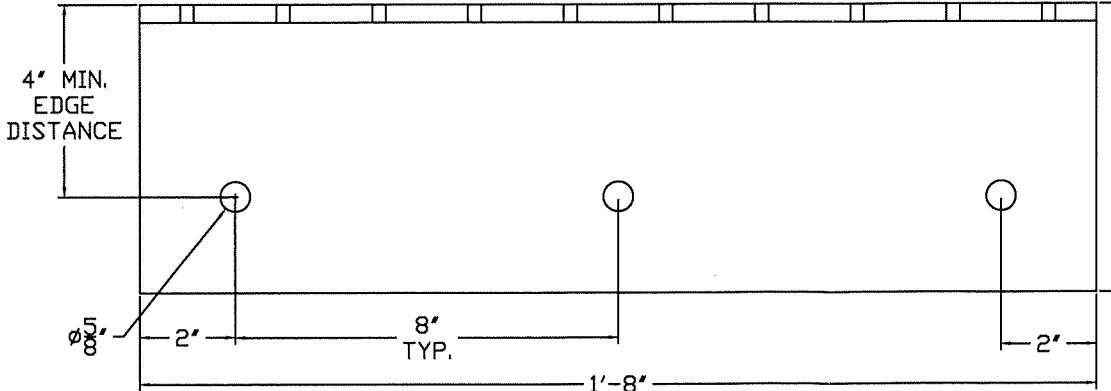
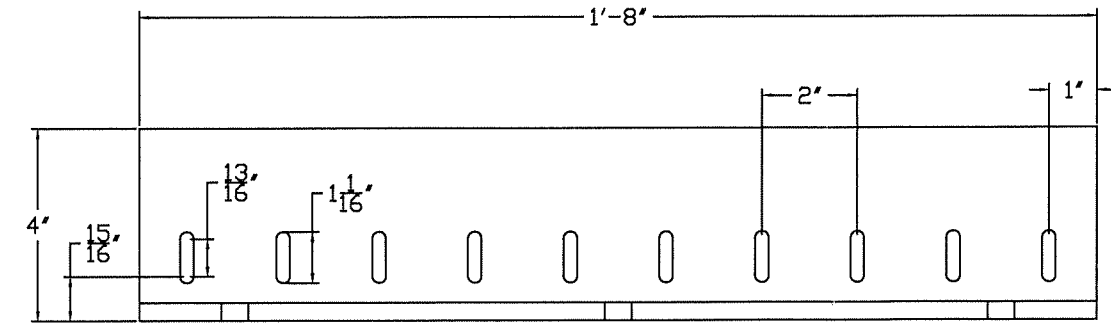
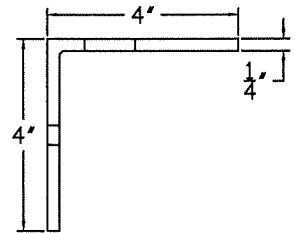
SHEET: 12 OF 13

DRW NO.: RD-1457

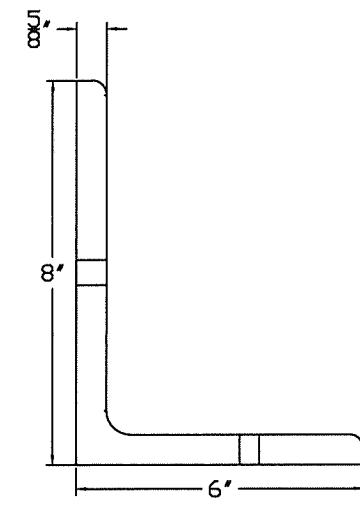
PRODUCT REVISED
 as complying with the Florida
 Building Code
 NOA-No. 24-0226.05
 Expiration Date 07/28/2026
 By *R. Helmla*
 Miami-Dade Product Control



CLIP #70
 SUBSTRATE:
 ALUMINUM
 4"x4"x1/4"x11" LG
 ALUM. MULLION CLIP ANGLE

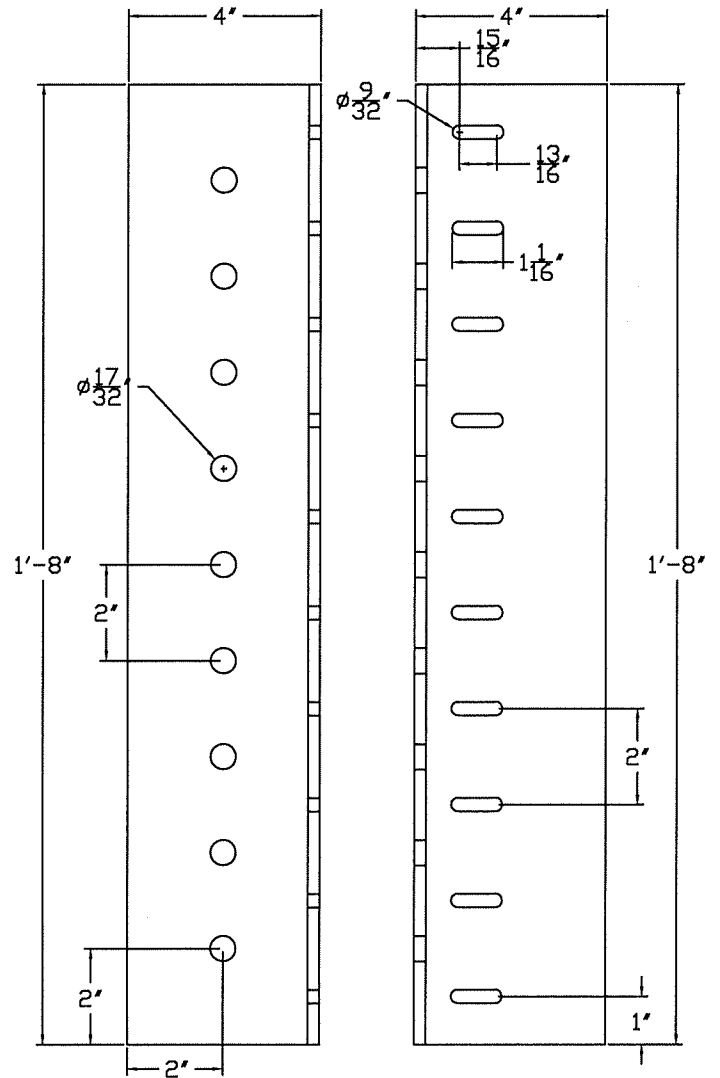


CLIP #71
 SUBSTRATE:
 CONCRETE
 6"x4"x3/8"x20" LG
 ALUM. MULLION CLIP ANGLE

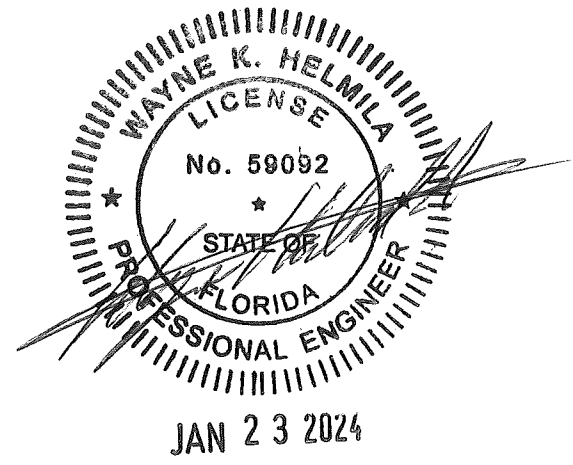


CLIP #68
 SUBSTRATE:
 GROUT FILLED CMU
 8"x6"x5/8"x32" LG
 ALUM. MULLION SHELF ANGLE
 *MUST BE USED WITH CLIP #67
 AND ALUM. SHIM PLATE #72

RICE
 ENGINEERING
 105 School Creek Trail
 Luxenburg, WI 54217
 Phone: (920) 617-1042
 Fax: (920) 617-1100
 www.rice-inc.com
 Florida Firm No: F-01000005061
 Certificate of Authorization: #9090
 Wayne K. Helmla
 Registration No: 59092



CLIP #69
 SUBSTRATE:
 WOOD
 4"x4"x1/4"x20" LG
 ALUM. MULLION CLIP ANGLE



PROJECT: DC-9614; SUBMITTAL DRAWINGS	REVISION: 5	01-23-24
TITLE: CLIP ANGLES PART C	DATE: 11-20-15	
SCALE: 3" = 1'-0"	SHEET: 13 OF 13	
DRW BY: R. GEIST	DRW NO: RD-1457	

Construction Specialties™
 49 MEEKER AVENUE, CRANFORD, NEW JERSEY
 PHONE: 1-800-631-7379 / FAX: 908-272-5844

