



DEPARTMENT OF REGULATORY AND ECONOMIC RESOURCES (RER)
BOARD AND CODE ADMINISTRATION DIVISION

NOTICE OF ACCEPTANCE (NOA)

MIAMI-DADE COUNTY
PRODUCT CONTROL SECTION
11805 SW 26 Street, Room 208
Miami, Florida 33175-2474
T (786) 315-2590 F (786) 315-2599
www.miamidade.gov/economy

Construction Specialties, Inc.
49 Meeker Avenue
Cranford, NJ 07016

SCOPE:

This NOA is being issued under the applicable rules and regulations governing the use of construction materials. The documentation submitted has been reviewed and accepted by Miami-Dade County RER-Product Control Section to be used in Miami Dade County and other areas where allowed by the Authority Having Jurisdiction (AHJ).

This NOA shall not be valid after the expiration date stated below. The Miami-Dade County Product Control Section (In Miami Dade County) and/or the AHJ (in areas other than Miami Dade County) reserve the right to have this product or material tested for quality assurance purposes. If this product or material fails to perform in the accepted manner, the manufacturer will incur the expense of such testing and the AHJ may immediately revoke, modify, or suspend the use of such product or material within their jurisdiction. RER reserves the right to revoke this acceptance if it is determined by Miami-Dade County Product Control Section that this product or material fails to meet the requirements of the applicable building code.

This product is approved as described herein and has been designed to comply with the Florida Building Code, including the High Velocity Hurricane Zone.

DESCRIPTION: Model DC-5804 Aluminum Louver

APPROVAL DOCUMENT: Drawing No. **RD-1687**, titled "DC-5804", sheets 1 through 6 of 6, dated 12/15/2022, with revision 2 dated 12/01/2023, prepared by Construction Specialties Inc., signed and sealed by Wayne K. Helmila, P.E. on 01/23/2024, bearing the Miami-Dade County Product Control revision stamp with the Notice of Acceptance number and expiration date by the Miami-Dade County Product Control Section.

MISSILE IMPACT RATING: Large and Small Missile Impact Resistant

LABELING: Each unit shall bear a permanent label with the manufacturer's name or logo, city, state, model/series, and following statement: "Miami-Dade County Product Control Approved", unless otherwise noted herein.

RENEWAL of this NOA shall be considered after a renewal application has been filed and there has been no change in the applicable building code negatively affecting the performance of this product.

TERMINATION of this NOA will occur after the expiration date or if there has been a revision or change in the materials, use, and/or manufacture of the product or process. Misuse of this NOA as an endorsement of any product, for sales, advertising or any other purposes shall automatically terminate this NOA. Failure to comply with any section of this NOA shall be cause for termination and removal of NOA.

ADVERTISEMENT: The NOA number preceded by the words Miami-Dade County, Florida, and followed by the expiration date may be displayed in advertising literature. If any portion of the NOA is displayed, then it shall be done in its entirety.

INSPECTION: A copy of this entire NOA shall be provided to the user by the manufacturer or its distributors and shall be available for inspection at the job site at the request of the Building Official.

This NOA revises **NOA # 23-0504.01** and consists of this page 1 and evidence pages E-1 and E-2, as well as approval document mentioned above.

The submitted documentation was reviewed by **Carlos M. Utrera, P.E.**



04/05/24

NOA No. 24-0226.06
Expiration Date: September 14, 2028
Approval Date: April 11, 2024
Page 1

NOTICE OF ACCEPTANCE: EVIDENCE SUBMITTED

1. Evidence submitted under NOA # 23-0504.01

A. DRAWINGS

1. Drawing No. **RD-1687**, titled "DC-5804", sheets 1 through 6 of 6, dated 12/15/2022, prepared by Construction Specialties Inc., signed and sealed by Wayne K. Helmila, P.E. on 07/19/2023.

B. TESTS

1. Test reports on: 1) Uniform Static Air Pressure Test, Loading per FBC, TAS 202-94
2) Large Missile Impact Test per FBC, TAS 201-94
3) Cyclic Wind Pressure Loading per FBC, TAS 203-94
along with marked-up drawings and installation diagram of DC-5804 Louvers, prepared by Intertek, Test Report No. **N4888.01-109-18**, dated 10/18/2022, signed and sealed by Tanya A. Dolby, P.E.
2. Test report on Louvers Impacted by Wind Borne Debris per AMCA 540-13 of DC-5804 Louvers, prepared by Intertek, Test Report No. **L5078.02-109-44**, dated 03/02/2022, signed and sealed by Vinu J. Abraham, P.E.
2. Test report on High Velocity Wind-Driven Rain Resistant Louvers per AMCA 550-15 of their DC-5804 Louver, prepared by Intertek, Test Report No. **J8669.03-109-44**, dated 03/02/2022, signed and sealed by Vinu J. Abraham, P.E.

C. CALCULATIONS

1. DC-5804 MD Louver anchor calculation, prepared by Rice Engineering, dated 03/21/2023, signed and sealed by Wayne K. Helmila, P.E.

D. QUALITY ASSURANCE

1. Miami-Dade Department of Regulatory and Economic Resources (RER).

E. MATERIAL CERTIFICATIONS

1. None.

F. STATEMENTS

1. Statement letter of code conformance to 7th edition (2020) of the FBC, issued Rice Engineering, dated 04/21/2023, signed and sealed by Wayne K. Helmila, P.E.
2. Statement letter of no financial interest, issued by Rice Engineering, dated 04/21/2023, signed and sealed by Wayne K. Helmila, P.E.



Carlos M. Utrera, P.E.
Product Control Examiner
NOA No. 24-0226.06
Expiration Date: September 14, 2028
Approval Date: April 11, 2024

NOTICE OF ACCEPTANCE: EVIDENCE SUBMITTED

2. New evidence submitted

A. DRAWINGS

1. Drawing No. **RD-1687**, titled “DC-5804”, sheets 1 through 6 of 6, dated 12/15/2022, with revision 2 dated 12/01/2023, prepared by Construction Specialties Inc., signed and sealed by Wayne K. Helmila, P.E. on 01/23/2024.

B. TESTS

1. None.

C. CALCULATIONS

1. None.

D. QUALITY ASSURANCE

1. Miami-Dade Department of Regulatory and Economic Resources (RER).

E. MATERIAL CERTIFICATIONS

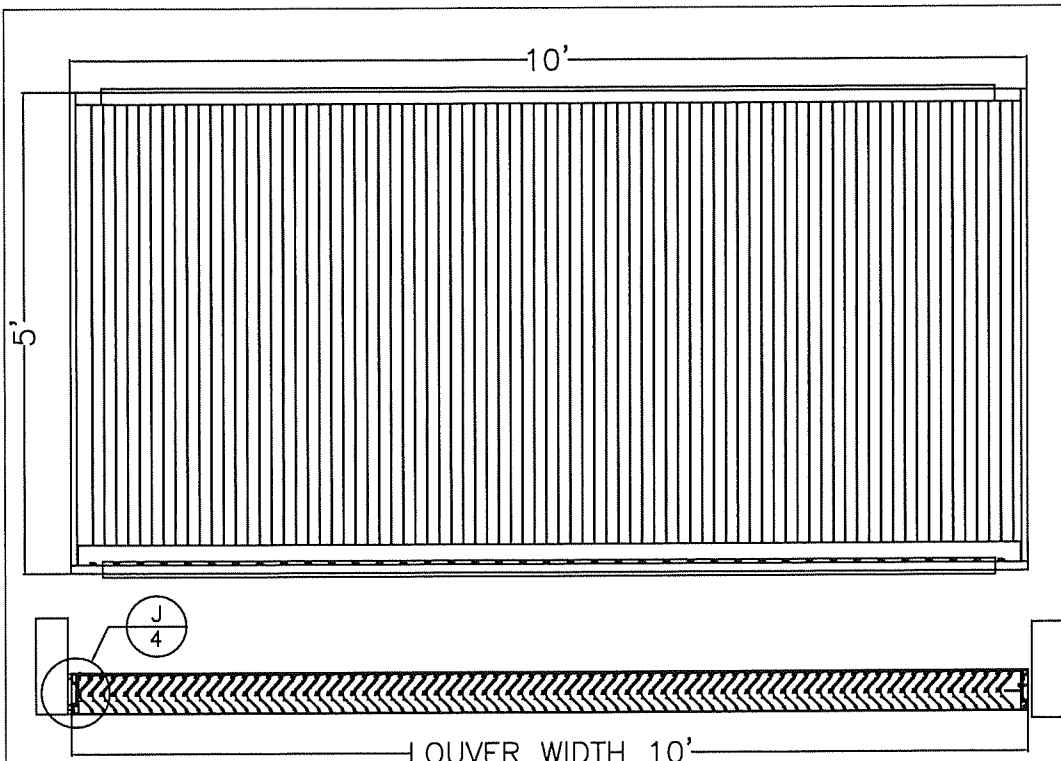
1. None.

F. STATEMENTS

1. Statement letter of code conformance to 8th edition (2023) of the FBC, issued Rice Engineering, dated 01/23/2024, signed and sealed by Wayne K. Helmila, P.E.
2. Statement letter of no financial interest, issued by Rice Engineering, dated 01/23/2024, signed and sealed by Wayne K. Helmila, P.E.



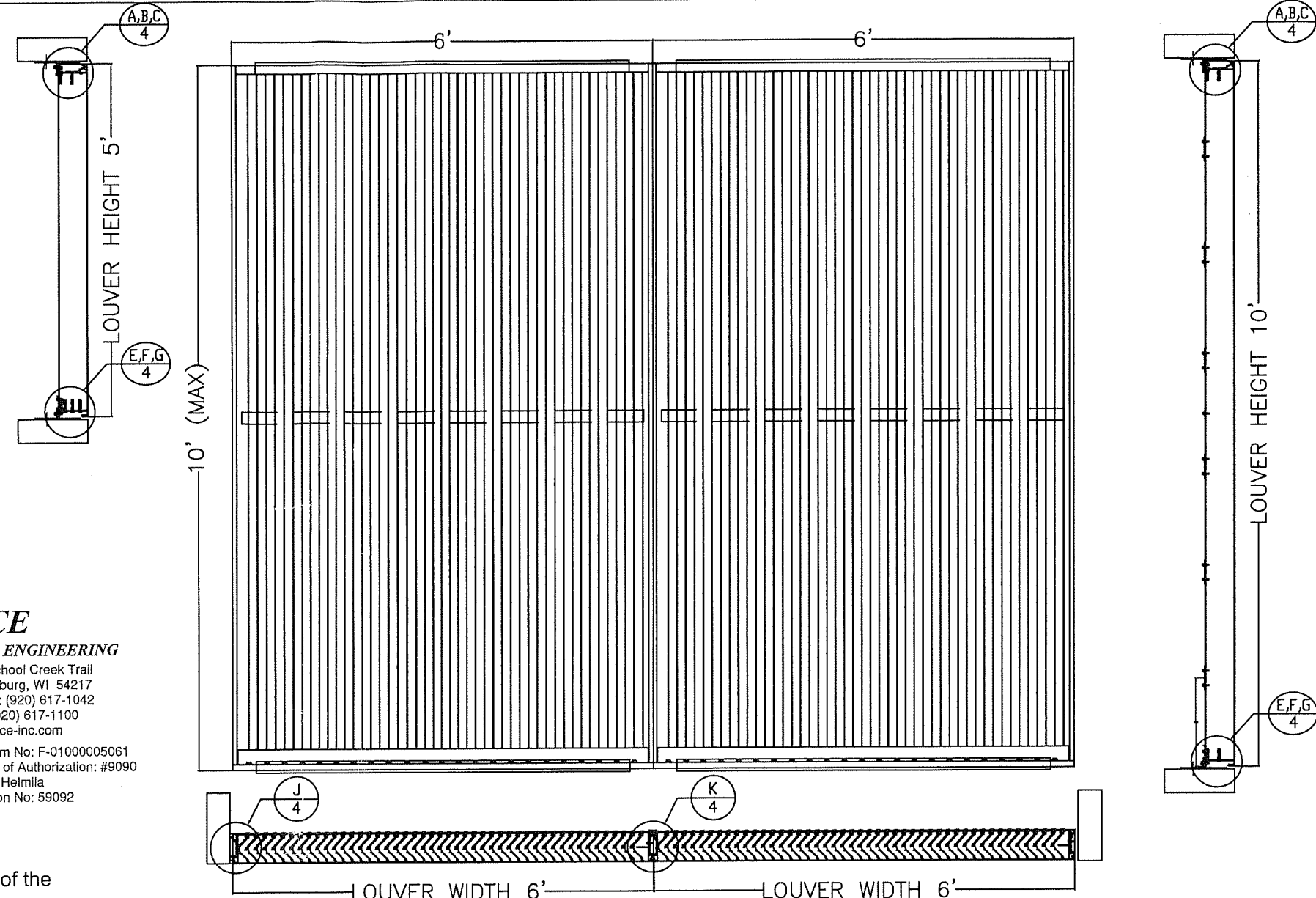
Carlos M. Utrera, P.E.
Product Control Examiner
NOA No. 24-0226.06
Expiration Date: September 14, 2028
Approval Date: April 11, 2024



SPECIMEN 1
DESIGN WINDLOAD - 160 PSF

PRODUCT REVISED
as complying with the Florida
Building Code
NOA-No. 24-0226.06
Expiration Date 09/14/2028
By *[Signature]*
Miami-Dade Product Control

RICE
ENGINEERING
105 School Creek Trail
Luxemburg, WI 54217
Phone: (920) 617-1042
Fax: (920) 617-1100
www.rice-inc.com
Florida Firm No: F-01000005061
Certificate of Authorization: #9090
Wayne K. Helmila
Registration No: 59092



SPECIMEN 2
DESIGN WINDLOAD - 160 PSF

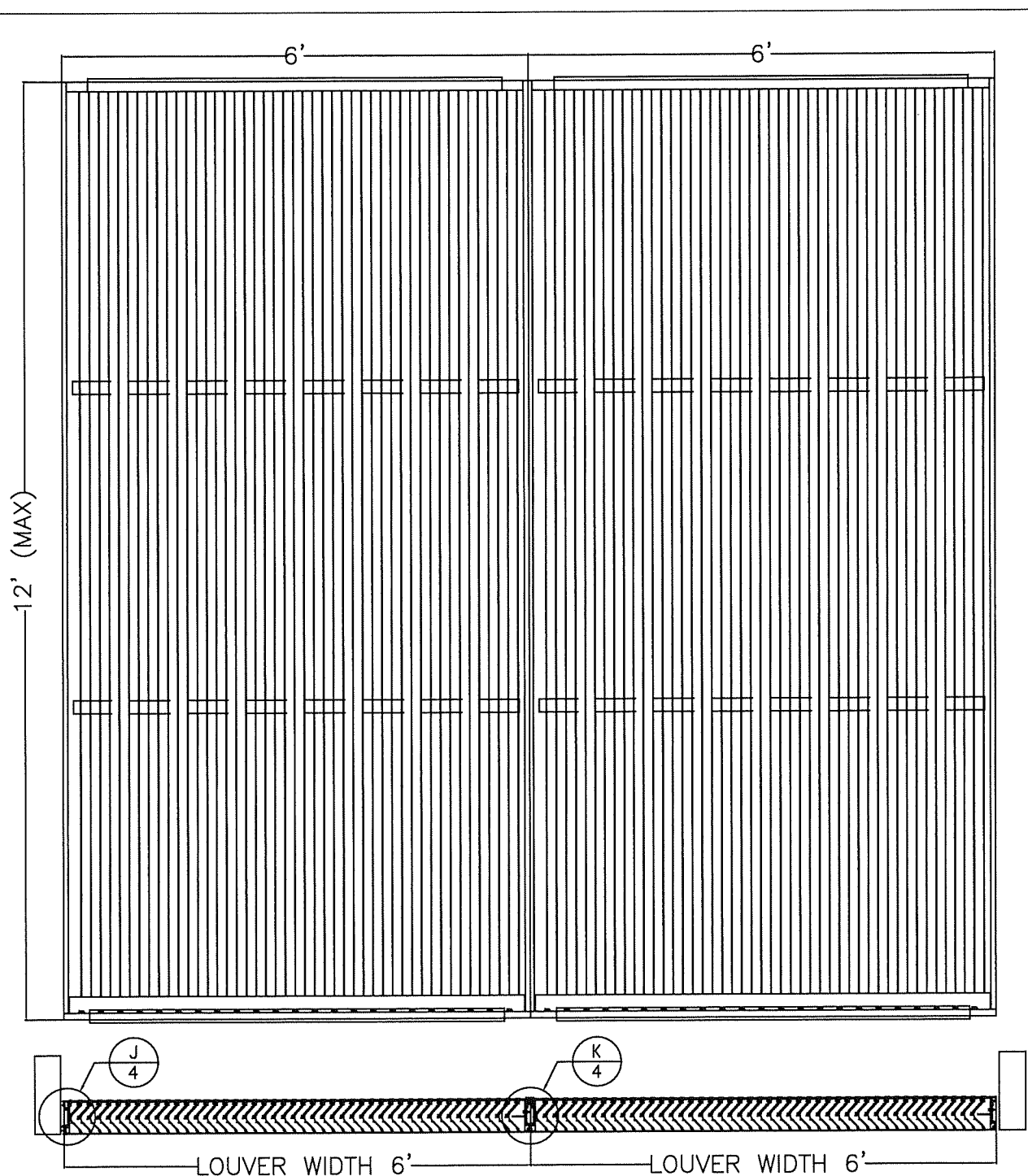
- 1) It shall be the responsibility of the Structural Engineer of Record to verify the capacity of the structure to support the loads imposed by the louvers.
- 2) These louvers have been designed according to the Florida Building Code and the Aluminum Design Manual. They are tested in accordance with Dade County protocols TAS 201, TAS 202 and TAS 203.
- 3) All fasteners shall be stainless steel Series 300 except the fasteners specified in note 13 of this sheet 1.
- 4) Grout-filled CMU, 1,500 psi min. (ASTM C-90), Type N mortar.
- 5) All concrete substrate shall be a minimum of 4000 psi, cracked, normal weight.
- 6) Section widths and heights are limited as shown in elevations and details.
- 7) Each fastener used must be detailed on the drawing and verified on the NOA.
- 8) Separation of unpainted aluminum and dissimilar materials to be maintained by the installer.
- 9) This louver system has been tested, analyzed and approved for design pressures up to and including +/-160 PSF. Any louver height 10' or less is approved for windloads 160 PSF or less. For louver heights greater than 10' but less than 12', maximum design windload is limited to 90 PSF.
- 10) Stack sections horizontally to an unlimited opening width without any additional vertical framing.
- 11) Louver Construction - Head, sill and jambs are constructed of extruded aluminum. The corners are coped and butted, secured with (2) #10 x 2" hex head screws at each corner, through the sill into the jambs and through the jambs into the head. The blades are secured to the head and sill using (2) #10 x 2" hex head screws and a weld, 1/8" x 1/2" long, on one side of the blade at the head only (no welding of blades to the sill is required).
- 12) These louvers have been designed and tested in accordance with AMCA 540 Test Method for Louvers Impacted by Wind Borne Debris (Basic Protection, Missile Level D and Enhanced Protection, Missile Level E). These louvers have been designed and tested in accordance with AMCA 550 Test Method for High Velocity Wind Driven Rain Resistant Louvers. Minimum section size to be 12" x 12". Passing AMCA 550 significantly reduces rain penetrating the space behind the louvers. Per Miami-Dade D.R.E.R.: the louver may be installed in a location where the room behind the louver is NOT DESIGNED to drain water penetrating into the room and the room will house non waterproof or non water resistant equipment, components or supplies.
- 13) A horizontal blade strap at midpoint is required if section height is greater than 60" and two horizontal blade straps are required at third-points for section heights greater than 10' but less than the max section height of 12'.

WAYNE K. HELMILA
LICENSE
No. 59092
STATE OF FLORIDA
PROFESSIONAL ENGINEER
JAN 23 2024

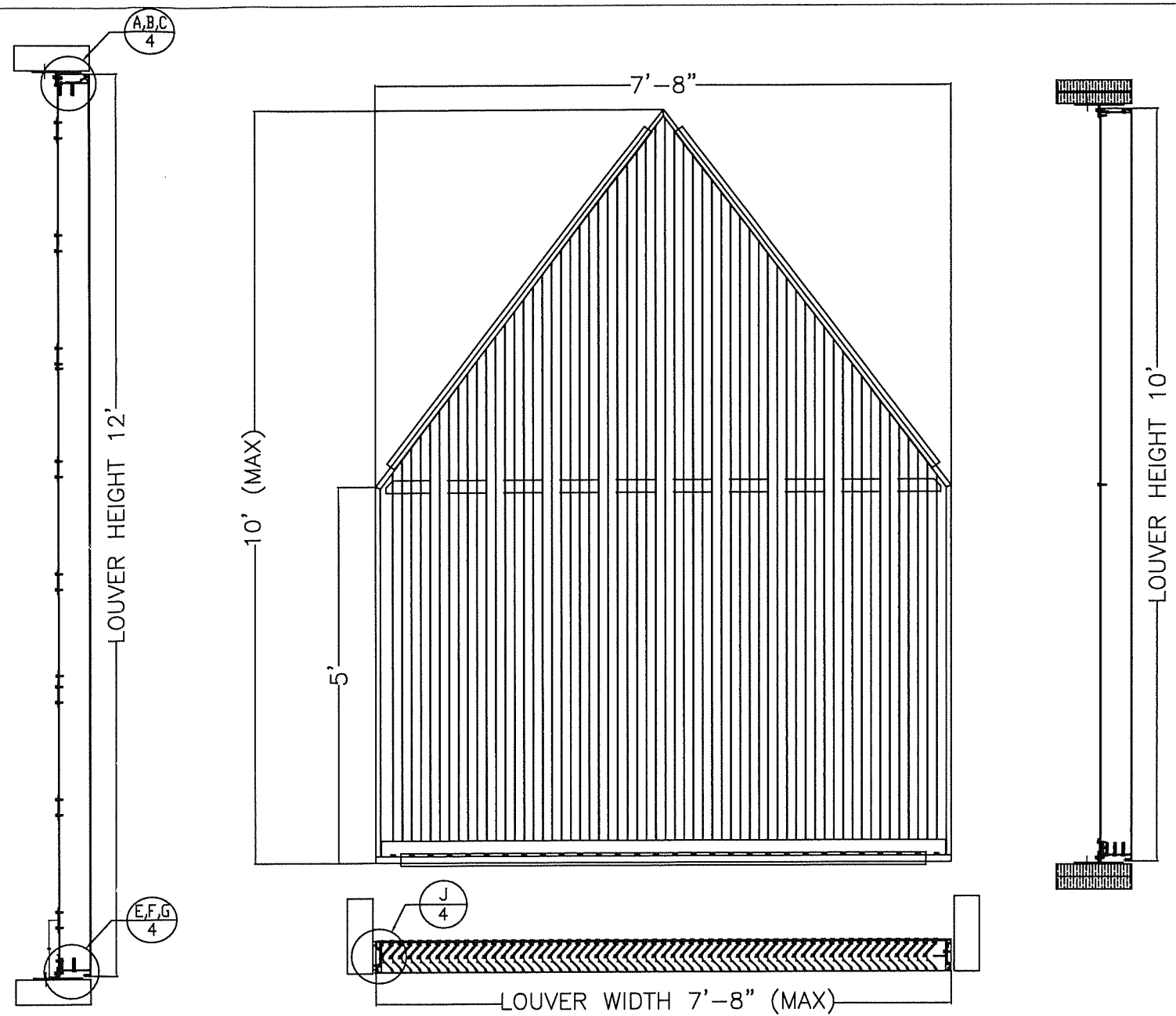
PROJECT: DC-5804	REVISION: 2	12-01-2023
TITLE: LAYOUT DRAWINGS - SPECIMENS 1 & 2	DATE: 12-15-2022	
SCALE: 1" = 1'-0"	SHEET: 1 OF 6	
DRW BY: R. GEIST	DRW NO: RD-1687	

Construction Specialties™
49 MEEKER AVENUE, CRANFORD, NEW JERSEY
PHONE: 1-800-631-7379 / FAX: 908-272-5844





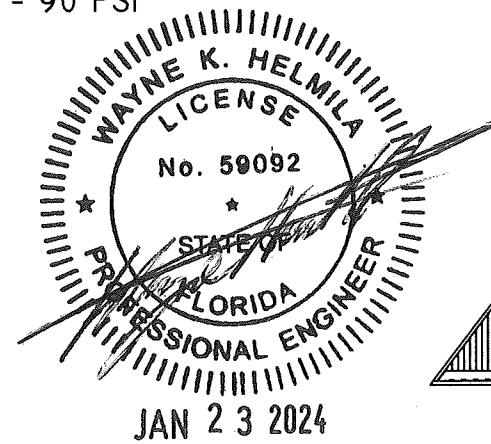
SPECIMEN 3
DESIGN WINDLOAD - 90 PSF



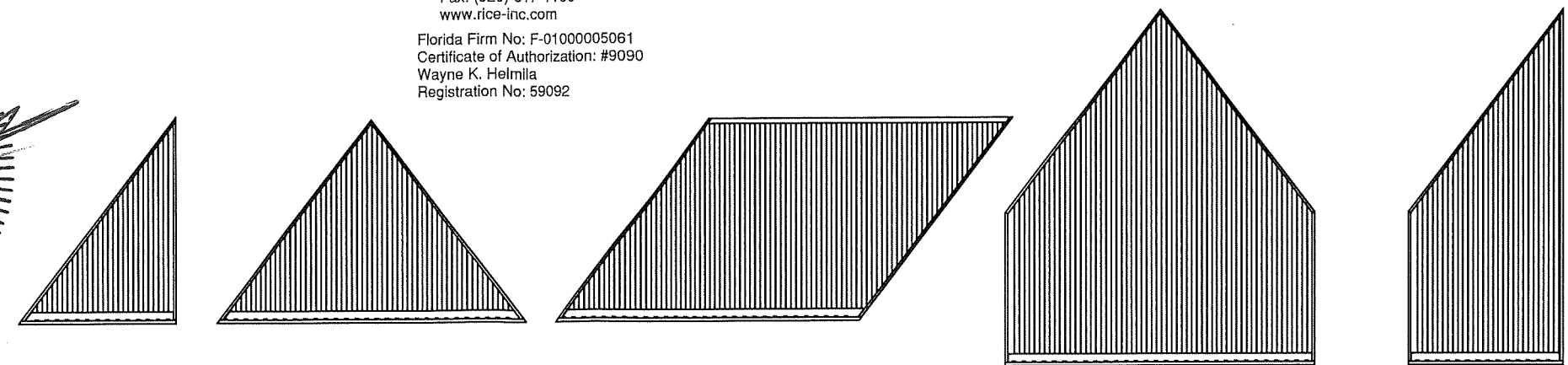
SPECIMEN 4
DESIGN WINDLOAD - 160 PSF

RICE
ENGINEERING
105 School Creek Trail
Luxemburg, WI 54217
Phone: (920) 617-1042
Fax: (920) 617-1100
www.rice-inc.com
Florida Firm No: F-01000005061
Certificate of Authorization: #9090
Wayne K. Helmila
Registration No: 59092

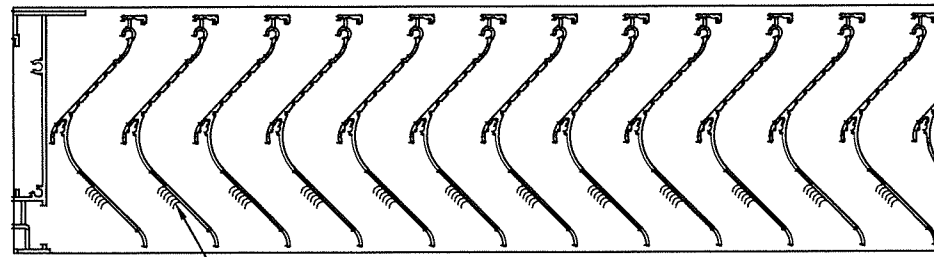
PRODUCT REVISED
as complying with the Florida
Building Code
NOA-No. 24-0226.06
Expiration Date 09/14/2028
By *[Signature]*
Miami-Dade Product Control



JAN 23 2024

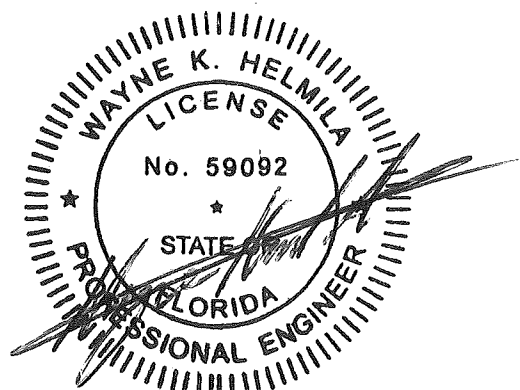


PROJECT: DC-5804	REVISION: 2	12-01-2023
TITLE: LAYOUT DRAWINGS - SPECIMENS 3 & 4	DATE: 12-15-2022	
SCALE: 1" = 1'-0"	SHEET: 2 OF 6	
DRW BY: R. GEIST	DRW NO: RD-1687	



1/8" X 1/2" LONG WELD ON EACH BLADE TO FRAME AT HEAD

FRONT BLADE WELDING AT HEAD

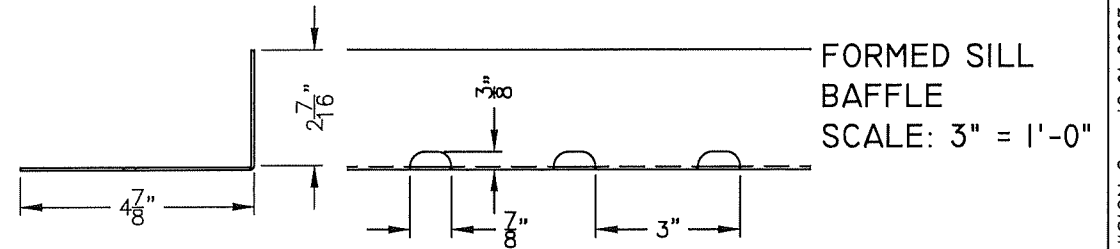


JAN 23 2024

PRODUCT REVISED
as complying with the Florida Building Code
NOA-No. 24-0226.06

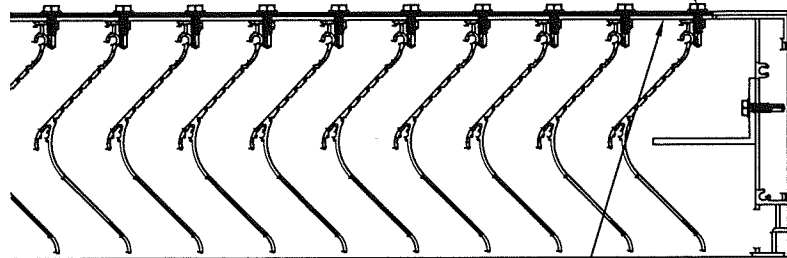
Expiration Date 09/14/2028

By *[Signature]*
Miami-Dade Product Control



FORMED SILL
BAFFLE
SCALE: 3" = 1'-0"

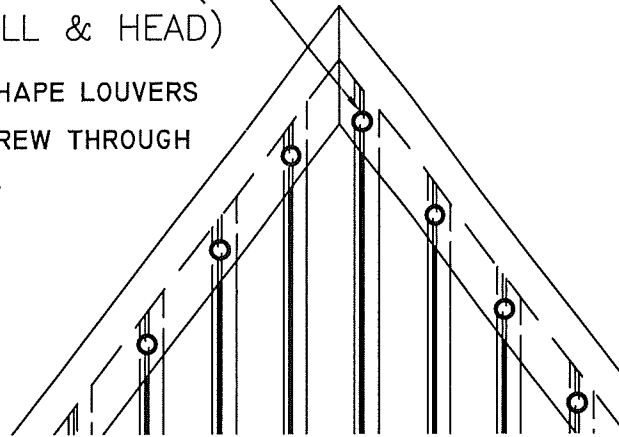
#10 X 3/4" LG H/H SELF DRILL/SELF TAPPING SCREW (1 PER BLADE AT SILL & HEAD)



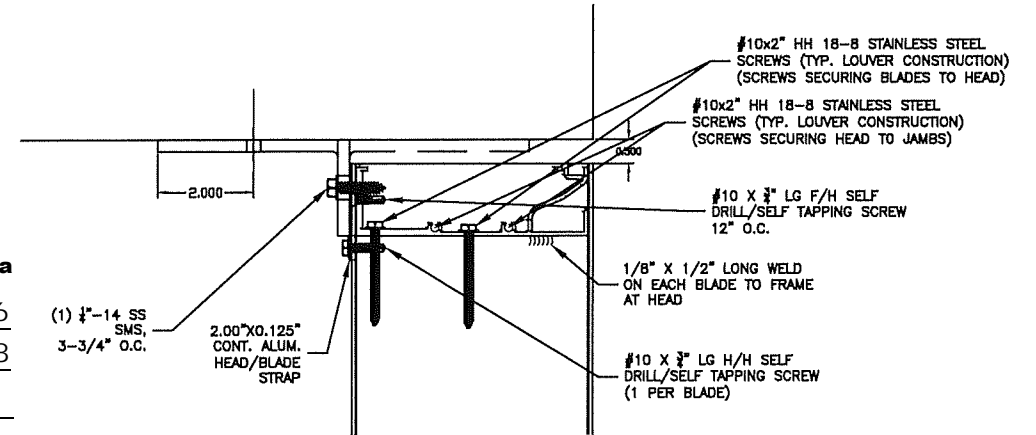
1/8" x 2" ALUMINUM HEAD PLATE
REAR BLADE FASTENING AT HEAD & SILL

#10 X 3/4" LG H/H SELF DRILL/SELF TAPPING SCREW (1 PER BLADE AT SILL & HEAD)

REAR VIEW OF SPECIAL SHAPE LOUVERS WITH #10x3/4" LG H/H SCREW THROUGH FRAME AND INTO BLADES.



RICE ENGINEERING
105 School Creek Trail
Luxemburg, WI 54217
Phone: (920) 617-1042
Fax: (920) 617-1100
www.rice-inc.com
Florida Firm No: F-01000005061
Certificate of Authorization: #9090
Wayne K. Helmila
Registration No: 59092



(1) 1/2"-14 SS SMS, 3-3/4" O.C.

2.00"x0.125" CONT. ALUM. HEAD/BLADE STRAP

#10x2" HH 18-8 STAINLESS STEEL SCREWS (TYP. LOUVER CONSTRUCTION) (SCREWS SECURING BLADES TO HEAD)

#10x2" HH 18-8 STAINLESS STEEL SCREWS (TYP. LOUVER CONSTRUCTION) (SCREWS SECURING HEAD TO JAMBS)

#10 X 3/4" LG F/H SELF DRILL/SELF TAPPING SCREW 12" O.C.

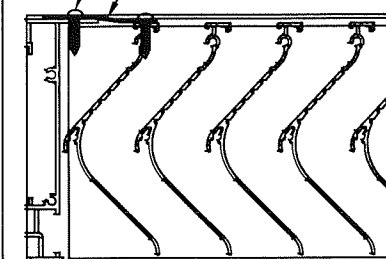
1/8" X 1/2" LONG WELD ON EACH BLADE TO FRAME AT HEAD

#10 X 3/4" LG H/H SELF DRILL/SELF TAPPING SCREW (1 PER BLADE)

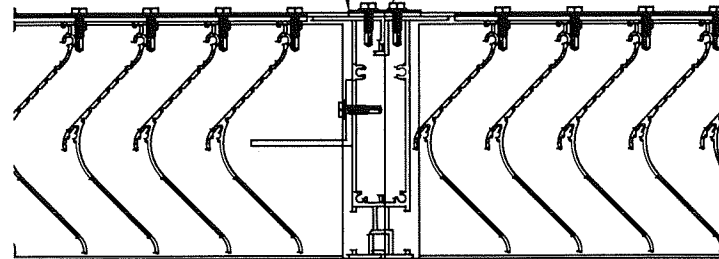
2.00"x0.125" CONT. ALUM. BLADE STRAP (HELD SHORT OF JAMBS 0.125 FROM JAMBS)

#10 X 1" LG SELF DRILL/SELF TAPPING SCREW (1 PER BLADE)

#8x3/4" PH SCREWS
JAMB STRIP BLANK OFF

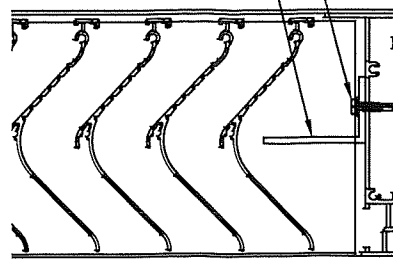


1.5"x4"x0.125" MULLION LINE UP PLATE, 18" O.C.

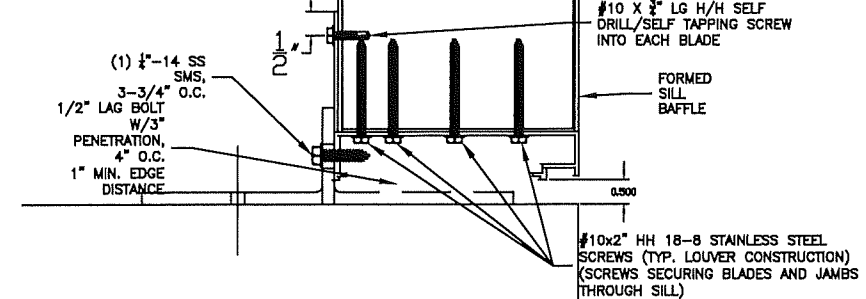


#10 X 3/4" LG H/H SELF DRILL/SELF TAPPING SCREW (4 PER MULLION LINE UP PLATE)

#10x3/4" HH TEK SCREWS
1.375" x 1/8" CONT. ANGLE (SAME LENGTH AS BLADES)



(1) 1/2"-14 SS SMS, 3-3/4" O.C.
1/2" LAG BOLT W/3" PENETRATION, 4" O.C.
1" MIN. EDGE DISTANCE



#10 X 3/4" LG H/H SELF DRILL/SELF TAPPING SCREW INTO EACH BLADE

FORMED SILL BAFFLE

#10x2" HH 18-8 STAINLESS STEEL SCREWS (TYP. LOUVER CONSTRUCTION) (SCREWS SECURING BLADES AND JAMBS THROUGH SILL)

REVISION: 2 12-01-2023
DATE: 12-15-2022
SHEET: 3 OF 6
DRW NO.: RD-1687
PROJECT: DC-5804
TITLE: LAYOUT DRAWINGS - ASSEMBLY DETAILS
SCALE: 3" = 1'-0"
DRW BY: R. GEIST

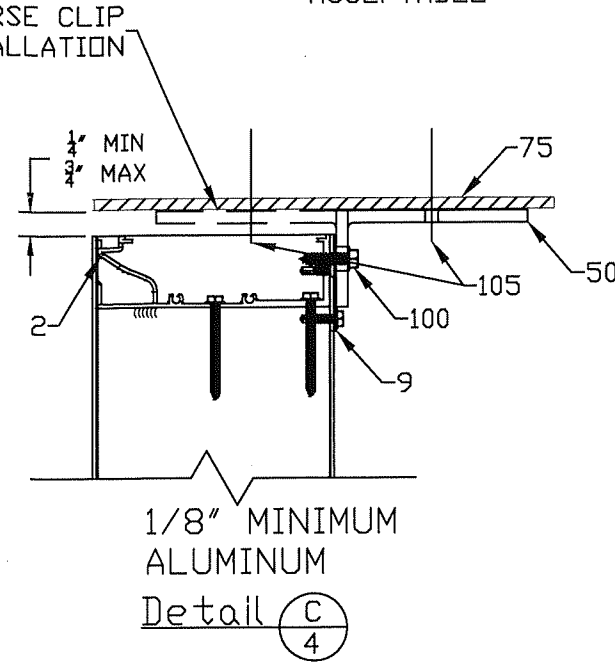
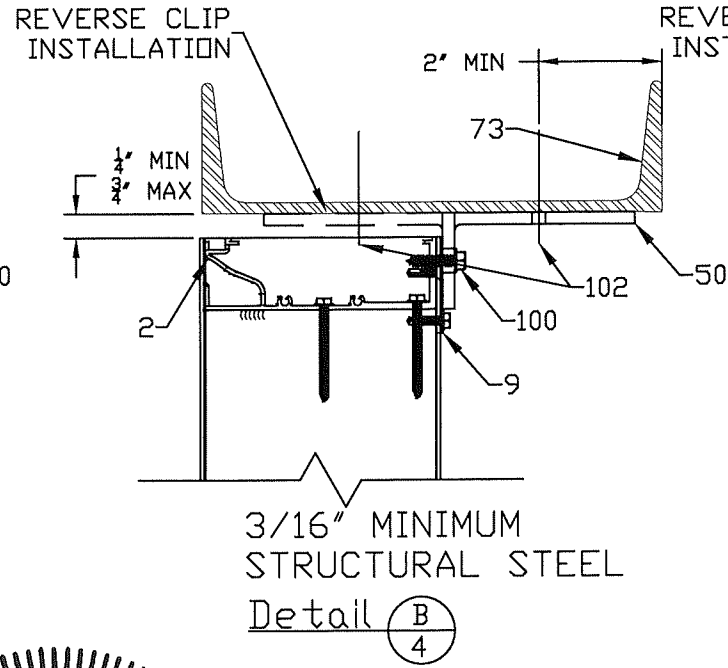
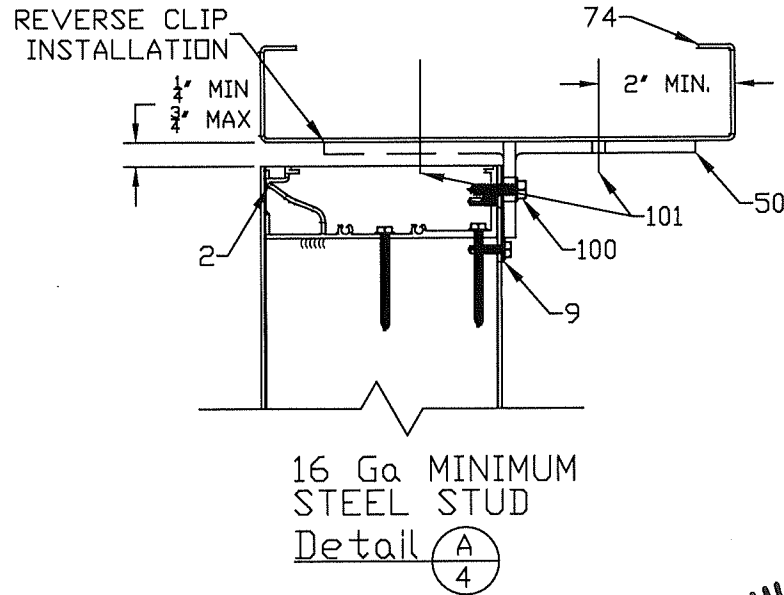
Construction Specialties™
49 MEEKER AVENUE, CRANFORD, NEW JERSEY
PHONE: 1-800-631-7379 / FAX: 908-272-5844



ALL SUBSTRATES SHOWN BELOW CAN BE USED FOR HEAD AND/OR SILL CONDITIONS.

ALL STEEL SHAPES ACCEPTABLE

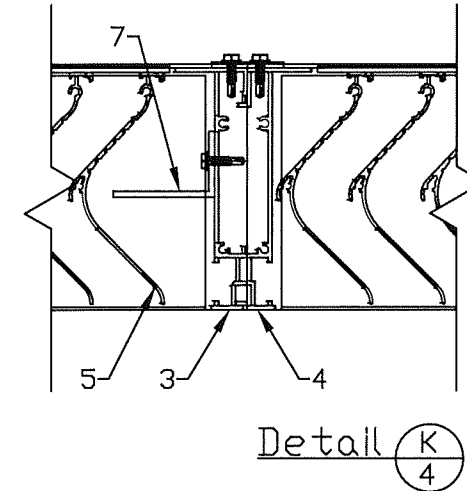
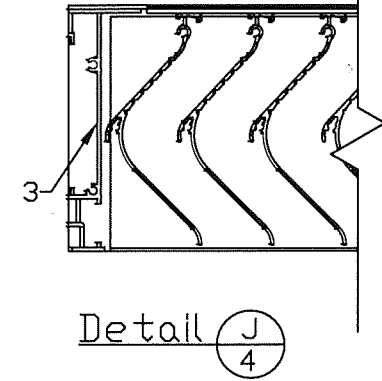
ALL ALUMINUM SHAPES ACCEPTABLE



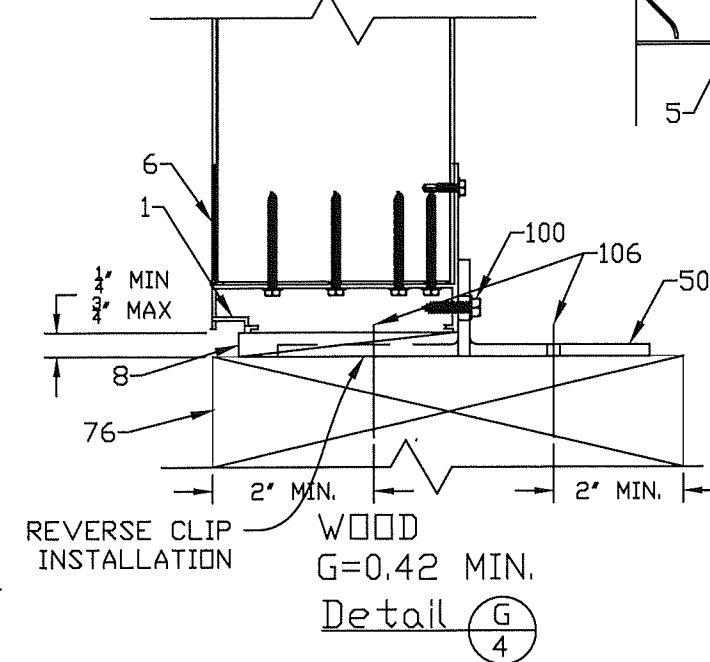
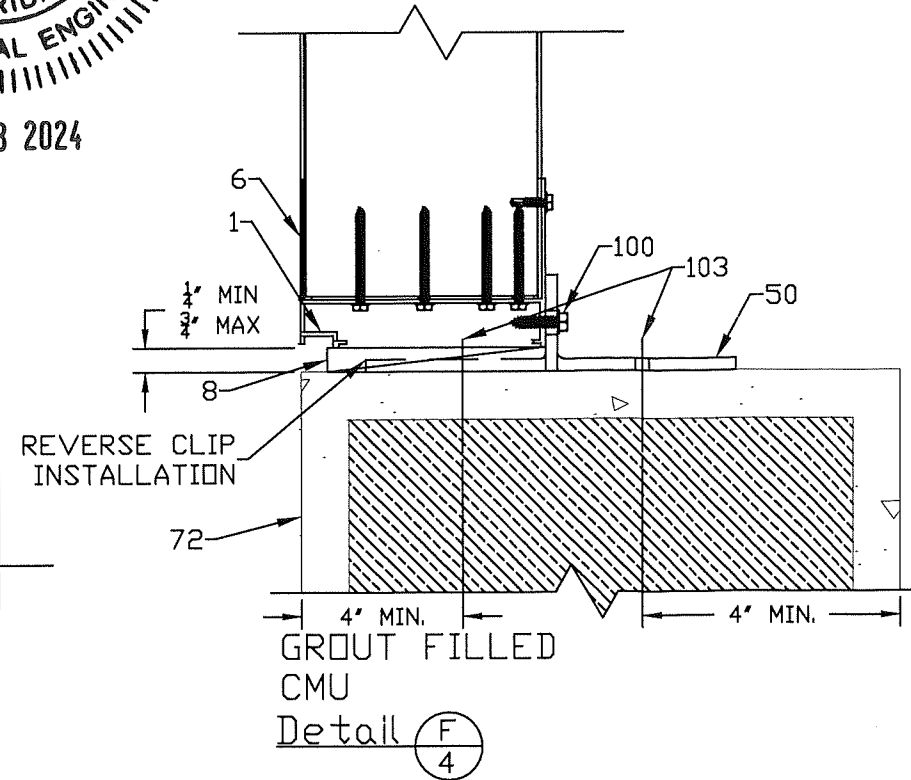
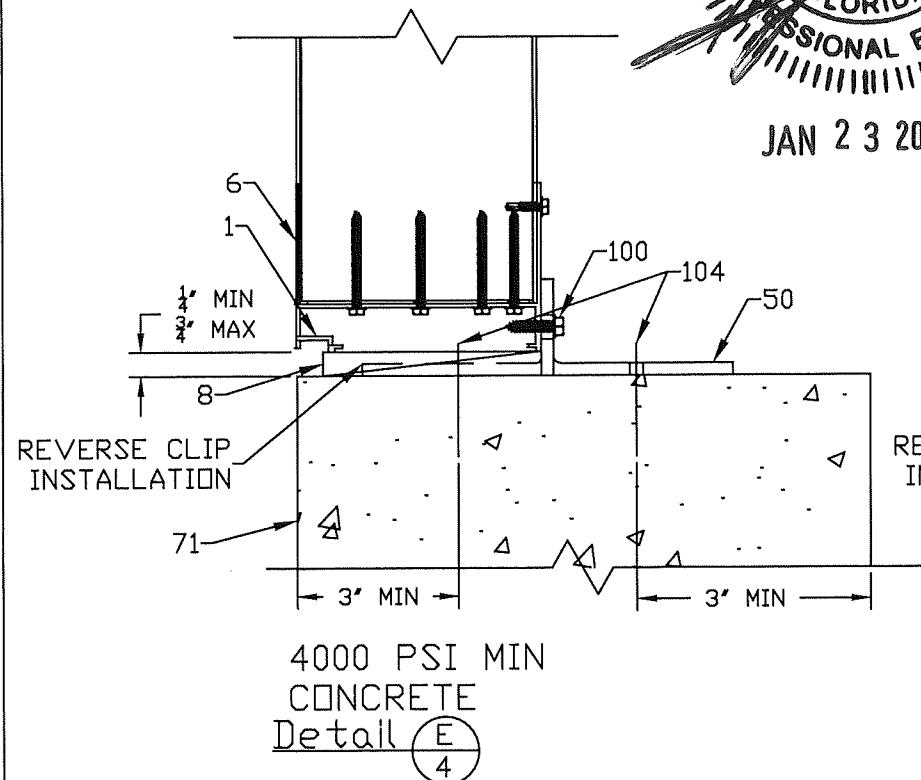
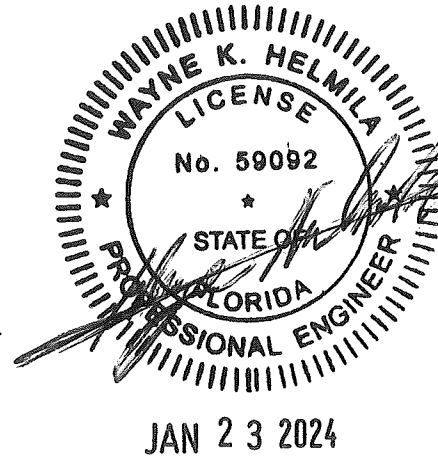
RICE
ENGINEERING

105 School Creek Trail
Luxemburg, WI 54217
Phone: (920) 617-1042
Fax: (920) 617-1100
www.rice-inc.com

Florida Firm No: F-0100005061
Certificate of Authorization: #9090
Wayne K. Helmila
Registration No: 59092



PRODUCT REVISED
as complying with the Florida Building Code
NOA-No. 24-0226.06
Expiration Date 09/14/2028
By *[Signature]*
Miami-Dade Product Control

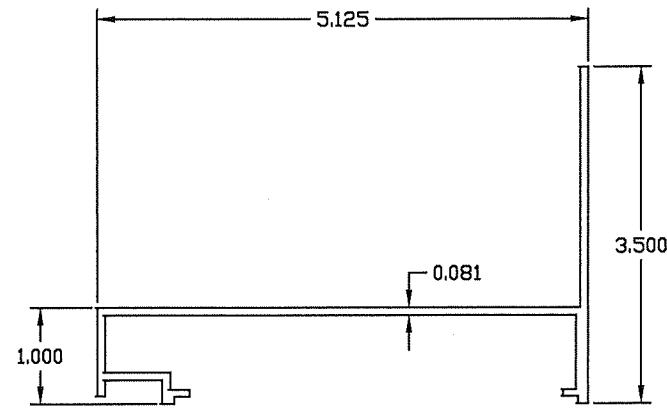


REVISION: 2 12-01-2023
DATE: 12-15-2022
SHEET: 4 OF 6
DRW NO: RD-1687

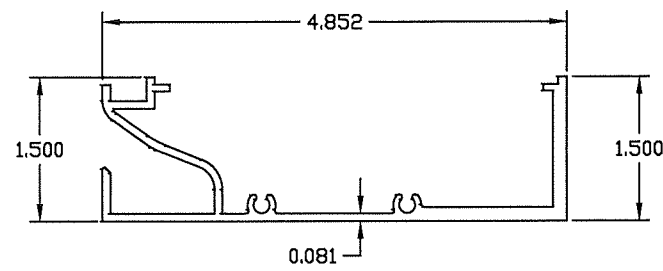
PROJECT: DC-5804
TITLE: LAYOUT DRAWINGS - MOUNTING DETAILS
SCALE: 3" = 1'-0"
DRW BY: R. GEIST

Construction Specialties™
49 MEEKER AVENUE, CRANFORD, NEW JERSEY
PHONE: 1-800-631-7379 / FAX: 908-272-5844

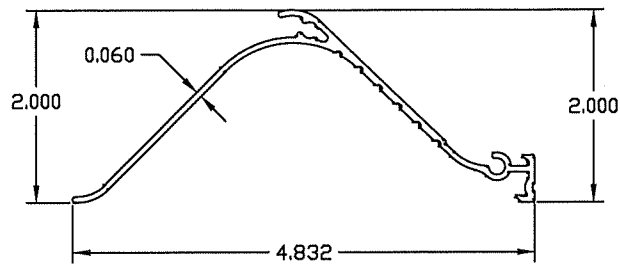




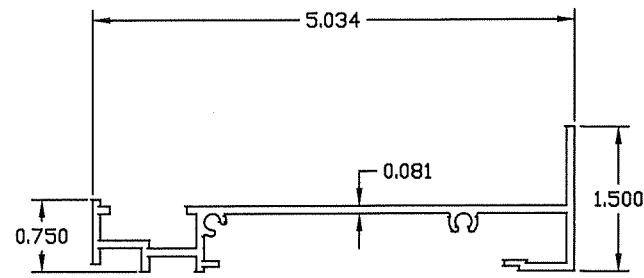
1 - Sill



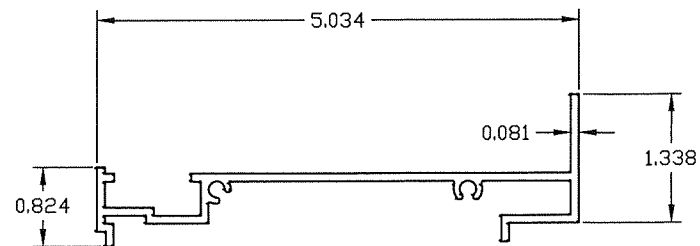
2 - Head



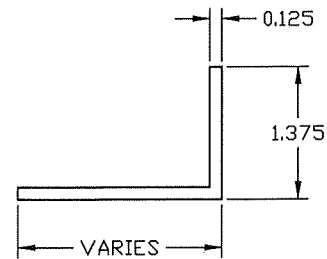
5 - Blade



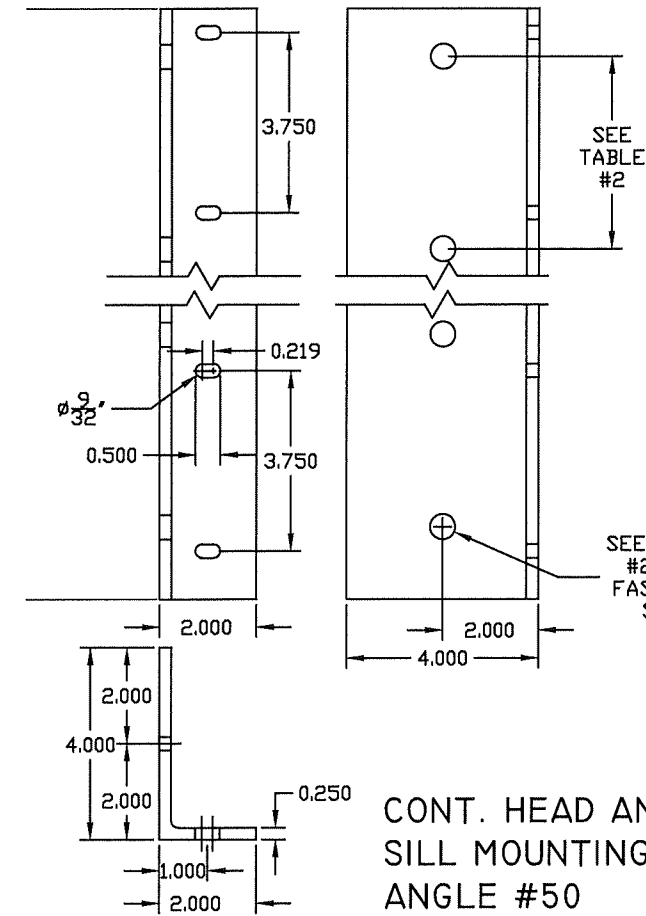
3 - Jamb/Mullion half



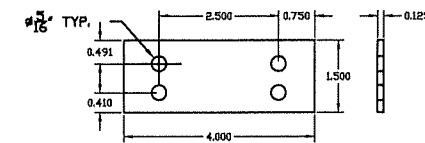
4 - Mullion half



7 - Jamb Closure Angle

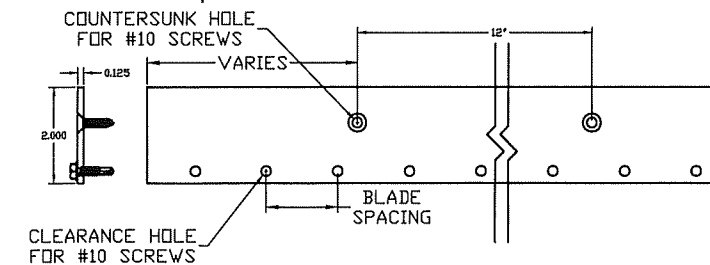


CONT. HEAD AND SILL MOUNTING ANGLE #50

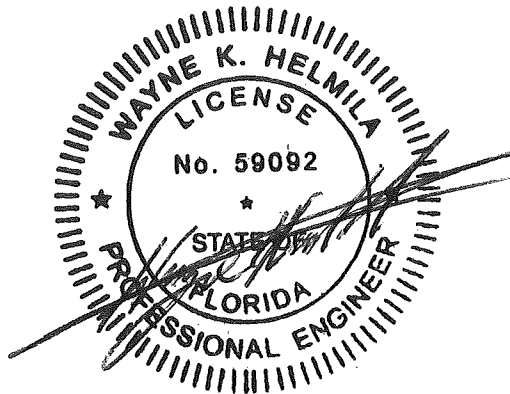


10 - Mullion Line up Plate

9 - Head/Blade Strap



RICE ENGINEERING
 105 School Creek Trail
 Luxemburg, WI 54217
 Phone: (920) 617-1042
 Fax: (920) 617-1100
 www.rice-inc.com
 Florida Firm No: F-01000005061
 Certificate of Authorization: #9090
 Wayne K. Helmila
 Registration No: 59092



JAN 23 2024

PRODUCT REVISED
 as complying with the Florida Building Code
 NOA-No. 24-0226.06
 Expiration Date 09/14/2028
 By *[Signature]*
 Miami-Dade Product Control

REVISION: 2 12-01-2023
 DATE: 12-15-2022
 SHEET: 5 OF 6
 DRAW NO: RD-1687
 PROJECT: DC-5804
 TITLE: LAYOUT DRAWINGS - PARTS DRAWINGS
 SCALE: 3" = 1'-0"
 DRW BY: R. GEIST

Construction Specialties™
 49 MEEKER AVENUE, CRANFORD, NEW JERSEY
 PHONE: 1-800-631-7379 / FAX: 908-272-5844



ITEM #	PART	DESCRIPTION
1	SILL	6063-T6 ALUMINUM 0.080" THK
2	HEAD	6063-T6 ALUMINUM 0.080" THK
3	JAMB	6063-T6 ALUMINUM 0.080" THK
4	MULLION	6063-T6 ALUMINUM 0.080" THK
5	BLADE	6063-T6 ALUMINUM 0.060" THK
6	SILL BAFFLE	FORMED ALUMINUM 0.080" THK
7	JAMB CLOSURE ANGLE	6063-T6 ALUMINUM ANGLE 0.125" THK.
8	SHIM (SILL ONLY)	NON-COMPRESSIBLE MATERIAL, BY OTHERS
9	HEAD/BLADE PLATE	6063-T6 ALUMINUM 0.125" THK
10	MULLION LINE UP PLATE	6063-T6 ALUMINUM 0.125" THK
50	HEAD/SILL MOUNTING ANGLE	6061-T6 2"X4"X1/4" CONT. ALUM. ANGLE
71	CONCRETE	4000 PSI CONCRETE, CRACKED, NORMAL WEIGHT
72	CMU	GROUT FILLED MASONRY UNIT (1500 PSI, ASTM C90, TYPE II WITH TYPE N MORTAR)
73	STRUCTURAL STEEL	3/16" THK MIN. ANY SHAPE *See Notes below
74	STEEL STUD	16 GA MIN. GALVANIZED STRUCTURAL STEEL STUD. Fy=50Ksi
75	ALUMINUM	1/8" THK. MIN. (6063-T5)
76	WOOD	SG=0.42 MIN. SPRUCE PINE FIR, 4" MIN. THICKNESS

STEEL ANCHOR PLATES, CLIP ANGLES, REINFORCEMENT CHANNELS AND BARS TO BE MINIMUM ASTM A-36 STEEL, DESIGNED BY OTHERS.

STEEL TUBES TO BE MINIMUM ASTM A-500, GRADE B, Fy = 46 KSI., DESIGNED BY OTHERS.

Part #	Fastener Description	Substrate	Max Spacing	Min. Edge Dist.	Min. Embed.	End Dist.
100	1/4"-14 Dia. S.S. 300 Series Screws	Aluminum Head/Sill Frame Members	3-3/4"	1/2"	NA	NA
101	1/4"-14 Dia. S.S. 300 Series Screws	16 Ga Cold Formed Steel Stud	3-3/4"	2"	NA	NA
102	1/4"-20 Dia. ELDD BI-FLEX S.S. 300 Series Screws	3/16" Structural Steel (Any shape)	6"	2"	NA	NA
103	1/4"-14 Dia. S.S. 300 Series Aggre-Gator Masonry Screw Anchor	1500 psi min. Grout Filled CMU, Type N Mortar	2-1/4"	4"	2"	3"
104	3/8" Dia. Hilti Kwik HUS-EZ S.S. 300 Series Anchor	4000 psi Cracked Concrete (min. 6" slab thickness)	9"	3"	3-1/4"	4-1/2"
105	1/4"-14 Dia. S.S. 300 Series Screws	Aluminum (1/8" min thickness) (Any Shape)	3"	2"	NA	NA
106	1/2"-14 Dia. S.S. 300 Series Lag Screws	Wood	4"	2"	3"	2"

RICE
ENGINEERING

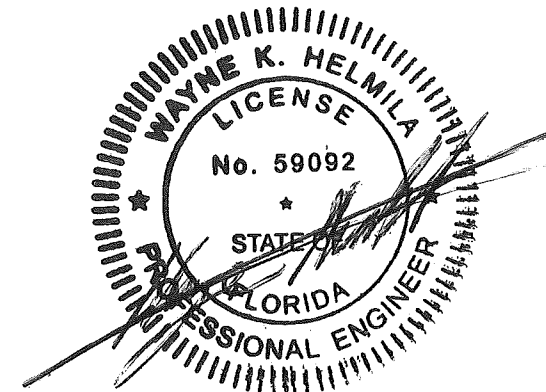
105 School Creek Trail
Luxemburg, WI 54217
Phone: (920) 617-1042
Fax: (920) 617-1100
www.rice-inc.com

Florida Firm No: F-01000005061
Certificate of Authorization: #9090
Wayne K. Helmila
Registration No: 59092

PRODUCT REVISED
as complying with the Florida
Building Code
NOA-No. 24-0226.06

Expiration Date 09/14/2028

By 
Miami-Dade Product Control



JAN 23 2024

REVISION: 2 12-01-2023

DATE: 12-15-2022

SHEET: 6 OF 6

DRW NO.: RD-1687

PROJECT: DC-5804

TITLE: LAYOUT DRAWINGS - TABLES

SCALE: 3" = 1'-0"

DRW BY: R. GEIST

Construction Specialties™
49 MEEKER AVENUE, CRANFORD, NEW JERSEY
PHONE: 1-800-631-7379 / FAX: 908-272-5844

