



MIAMI-DADE COUNTY
PRODUCT CONTROL SECTION
 11805 SW 26 Street, Room 208
 Miami, Florida 33175-2474
 T (786) 315-2590 F (786) 315-2599
www.miamidade.gov/building

DEPARTMENT OF REGULATORY AND ECONOMIC RESOURCES (RER)
 BOARD AND CODE ADMINISTRATION DIVISION
NOTICE OF ACCEPTANCE (NOA)

Regency Plus, Inc.
2000 Locust Gap Highway
Mount Carmel, PA 17851

SCOPE:

This NOA is being issued under the applicable rules and regulations governing the use of construction materials. The documentation submitted has been reviewed and accepted by Miami-Dade County RER-Product Control Section to be used in Miami-Dade County and other areas where allowed by the Authority Having Jurisdiction (AHJ).

This NOA shall not be valid after the expiration date stated below. The Miami-Dade County Product Control Section (In Miami-Dade County) and/ or the AHJ (in areas other than Miami-Dade County) reserve the right to have this product or material tested for quality assurance purposes. If this product or material fails to perform in the accepted manner, the manufacturer will incur the expense of such testing and the AHJ may immediately revoke, modify, or suspend the use of such product or material within their jurisdiction. RER reserves the right to revoke this acceptance if it is determined by Miami-Dade County Product Control Section that this product or material fails to meet the requirements of the applicable building code.

This product is approved as described herein and has been designed to comply with the Florida Building Code, including the High Velocity Hurricane Zone.

DESCRIPTION: Series "Tech 5108" White PVC Fixed Window – L.M.I.

APPROVAL DOCUMENT: Drawing No. **RPLS0060**, titled "Series Tech 5108 Vinyl Fixed Window (LMI)", sheets 1 through 5 of 5, dated 09/16/08, with revision L dated 02/20/24, prepared, signed and sealed by Robert James Amoruso, P.E., bearing the Miami-Dade County Product Control Revision stamp with the Notice of Acceptance number and expiration date by the Miami-Dade County Product Control Section.

MISSILE IMPACT RATING: Large and Small Missile Impact Resistant

LABELING: Each unit shall bear a permanent label with the manufacturer's name or logo, city, state, series, and following statement: "Miami-Dade County Product Control Approved", unless otherwise noted herein.

RENEWAL of this NOA shall be considered after a renewal application has been filed and there has been no change in the applicable building code negatively affecting the performance of this product.

TERMINATION of this NOA will occur after the expiration date or if there has been a revision or change in the materials, use, and/ or manufacture of the product or process. Misuse of this NOA as an endorsement of any product, for sales, advertising or any other purposes shall automatically terminate this NOA. Failure to comply with any section of this NOA shall be cause for termination and removal of NOA.

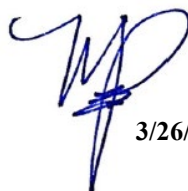
ADVERTISEMENT: The NOA number preceded by the words Miami-Dade County, Florida, and followed by the expiration date may be displayed in advertising literature. If any portion of the NOA is displayed, then it shall be done in its entirety.

INSPECTION: A copy of this entire NOA shall be provided to the user by the manufacturer or its distributors and shall be available for inspection at the job site at the request of the Building Official.

This NOA **revises and renews** NOA No. **23-0929.08** and consists of this page 1 and evidence pages E-1, E-2 and E-3, as well as approval document mentioned above.

The submitted documentation was reviewed by **Manuel Perez, P.E.**




 3/26/24

NOA No. 24-0306.04
 Expiration Date: January 28, 2030
 Approval Date: April 04, 2024
 Page 1

NOTICE OF ACCEPTANCE: EVIDENCE SUBMITTED

1. EVIDENCE SUBMITTED UNDER PREVIOUS NOA's

A. DRAWINGS

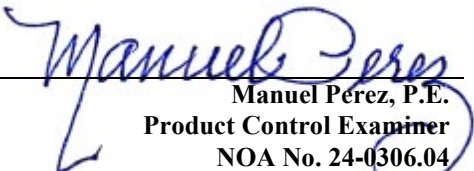
1. Manufacturer's die drawings and sections.
(Submitted under NOA No. 08-1021.04)
2. Drawing No. **RPLS0060**, titled "Series Tech 5108 Vinyl Fixed Window (LMI)", sheets 1 through 5 of 5, dated 09/16/08, with revision **K** dated 06/08/23, prepared by PTC Product Design Group, LLC, signed and sealed by Robert James Amoruso, P.E.
(Submitted under NOA No. 23-0929.08)

B. TESTS

1. Test reports on: 1) Air Infiltration Test, per FBC, TAS 202-94
2) Uniform Static Air Pressure Test, Loading per FBC, TAS 202-94
3) Water Resistance Test, per FBC, TAS 202-94
4) Large Missile Impact Test per FBC, TAS 201-94
5) Cyclic Wind Pressure Loading per FBC, TAS 203-94
6) Forced Entry Test, per FBC 2411.3.2.1, and TAS 202-94
along with marked-up drawings and installation diagram of a series 5108 white PVC fixed window, prepared by National Certified Testing Laboratories, Inc., Test Report No. **NCTL-110-11363-1**, dated 05/15/08, signed and sealed by Harold E. Rupp, P.E.
(Submitted under NOA No. 08-1021.04)
2. Test reports on: 1) Air Infiltration Test, per FBC, TAS 202-94
2) Uniform Static Air Pressure Test, Loading per FBC, TAS 202-94
3) Water Resistance Test, per FBC, TAS 202-94
4) Large Missile Impact Test per FBC, TAS 201-94
5) Cyclic Wind Pressure Loading per FBC, TAS 203-94
6) Forced Entry Test, per FBC 2411.3.2.1, and TAS 202-94
along with marked-up drawings and installation diagram of a series 5108 white PVC fixed window, prepared by National Certified Testing Laboratories, Inc., Test Report No. **NCTL-110-22857-1**, dated 12/17/19, signed and sealed by Joseph A. Reed, P.E.
(Submitted under NOA No. 20-0109.04)

C. CALCULATIONS

1. Anchor verification calculations and structural analysis, complying with FBC 5th Edition (2014), dated 06/11/15 with revision dated 09/01/15, prepared by PTC Product Design Group, LLC, signed and sealed by Robert J. Amoruso, P.E.
(Submitted under NOA No. 15-0618.01)
2. Glazing complies with **ASTM E1300-04**



Manuel Pérez, P.E.
Product Control Examiner
NOA No. 24-0306.04
Expiration Date: January 28, 2030
Approval Date: April 04, 2024

Regency Plus, Inc.

NOTICE OF ACCEPTANCE: EVIDENCE SUBMITTED

1. EVIDENCE SUBMITTED UNDER PREVIOUS NOA's (CONTINUED)

D. QUALITY ASSURANCE

1. Miami-Dade Department of Regulatory and Economic Resources (RER).

E. MATERIAL CERTIFICATIONS

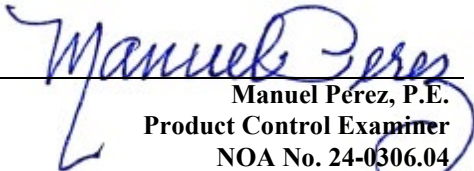
1. Notice of Acceptance No. **20-0915.22** issued to **Kuraray America, Inc.** for their **Trosifol® Ultraclear, Clear and Color PVB Glass Interlayers**, approved on 11/19/20, expiring on 07/08/24.
2. Notice of Acceptance No. **21-1109.04**, issued to **Vision Extrusions Group Limited**, for their **White Rigid PVC Exterior Extrusions for Windows and Doors**, approved on 03/31/22, expiring on 09/30/24.

F. STATEMENTS

1. Statement letter of conformance, complying with **FBC 8th Edition (2023)**, and of no financial interest, dated June 8, 2023, issued by PTC Product Design Group, LLC, signed and sealed by Robert James Amoruso, P.E.
(Submitted under NOA No. 23-0929.08)

G. OTHERS

1. Notice of Acceptance No. **20-1103.06**, issued to Regency Plus, Inc. for their Series "Tech 5108" White PVC Fixed Window – L.M.I., approved on 01/21/21 and expiring on 01/28/25.



Manuel Pérez, P.E.
Product Control Examiner
NOA No. 24-0306.04
Expiration Date: January 28, 2030
Approval Date: April 04, 2024

Regency Plus, Inc.

NOTICE OF ACCEPTANCE: EVIDENCE SUBMITTED

2. NEW EVIDENCE SUBMITTED

A. DRAWINGS

1. Drawing No. **RPLS0060**, titled “Series Tech 5108 Vinyl Fixed Window (LMI)”, sheets 1 through 5 of 5, dated 09/16/08, with revision **L** dated 02/20/24, prepared, signed and sealed by Robert James Amoruso, P.E.

B. TESTS

1. None

C. CALCULATIONS

1. None

D. QUALITY ASSURANCE

1. Miami-Dade Department of Regulatory and Economic Resources (RER)

E. MATERIAL CERTIFICATIONS

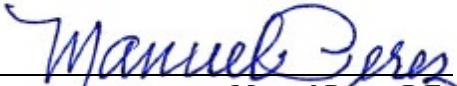
1. Notice of Acceptance No. **24-0205.28** issued to **Kuraray America, Inc.** for their **Trosifol® Ultraclear, Clear and Color PVB Glass Interlayers**, approved on 03/21/24, expiring on 07/08/29.
2. Notice of Acceptance No. **24-0102.08**, issued to **Vision Extrusions Group Limited**, for their **White Rigid PVC Exterior Extrusions for Windows and Doors**, approved on 02/15/24, expiring on 09/30/24.

F. STATEMENTS

1. Statement letter of conformance, complying with **FBC 8th Edition (2023)**, and of no financial interest, dated 02/20/24, issued, signed and sealed by Robert James Amoruso, P.E.

G. OTHERS

1. Notice of Acceptance No. **23-0929.08**, issued to Regency Plus, Inc. for their Series “Tech 5108” White PVC Fixed Window – L.M.I., approved on 11/02/23 and expiring on 01/28/25.


Manuel Pérez, P.E.
Product Control Examiner
NOA No. 24-0306.04

Expiration Date: January 28, 2030
Approval Date: April 04, 2024

REGENCY PLUS, INC.

SERIES TECH 5108 VINYL FIXED WINDOW (LARGE MISSILE IMPACT)

INSTALLATION ANCHORAGE DETAILS

NOTES:

1. THE PRODUCT SHOWN HEREIN IS DESIGNED AND MANUFACTURED TO COMPLY WITH REQUIREMENTS OF THE 8TH EDITION (2023) FLORIDA BUILDING CODE INCLUDING THE HIGH VELOCITY HURRICANE ZONE (HVHZ).
2. 2X WOOD FRAMING, 1X OR 2X WOOD BUCK, METAL FRAMING AND CONCRETE/MASONRY OPENING TO BE DESIGNED AND ANCHORED TO PROPERLY TRANSFER ALL LOADS TO STRUCTURE. FRAMING AND CONCRETE/MASONRY OPENING IS THE RESPONSIBILITY OF THE ARCHITECT OR ENGINEER OF RECORD.
3. 1X BUCK OVER CONCRETE/MASONRY IS OPTIONAL. WHEN 1X BUCK IS USED, INSTALLATION ANCHORS WILL PASS THROUGH WINDOW FRAME AND 1X BUCK INTO CONCRETE/MASONRY SUBSTRATE. WHEN USED, 1X BUCKS SHALL BE DESIGNED AND ANCHORED TO PROPERLY TRANSFER ALL LOADS TO STRUCTURE AND IS THE RESPONSIBILITY OF THE ARCHITECT OR ENGINEER OF RECORD. DISSIMILAR MATERIALS MUST BE SEPARATED WITH APPROVED COATING OR MEMBRANE. SELECTION OF COATING OR MEMBRANE IS THE RESPONSIBILITY OF THE ARCHITECT OR ENGINEER OF RECORD.
4. THE PRODUCT SHOWN HEREIN HAS BEEN TESTED TO TAS 201, TAS 202 AND TAS 203. SEE TEST REPORT NO. NCTL-110-22857-1, DATED 12/17/19 BY NATIONAL CERTIFIED TESTING LABORATORIES, YORK, PA, SIGNED AND SEALED BY JOSEPH A. REED, FLORIDA P.E. NO. 58920
5. MATERIAL:
 - 5.1. FRAME: EXTRUDED RIGID PVC BY VISION EXTRUSIONS GROUP LIMITED PER CURRENT MD NOA.
 - 5.2. LAMINATE GLASS INTERLAYER: TROSIFOL INTERLAYER BY KURARAY AMERICA, INC. PER CURRENT MD NOA.
6. GLAZING:
 - 6.1. GLAZING DETAIL AS TESTED:
 - 6.1.1. OVERALL: 7/8" NOMINAL INSULATING LAMINATED GLASS.
 - 6.1.2. GLASS THICKNESS: (1) LITE OF 3/16" NOMINAL TEMPERED GLASS TO THE INTERIOR AND (1) LITE OF LAMINATED GLASS TO THE EXTERIOR.
 - 6.1.3. LAMINATED LITE: (2) LITES OF 1/8" NOMINAL ANNEALED GLASS SEPARATED BY A 0.090" TROSIFOL INTERLAYER BY KURARAY AMERICA, INC.
 - 6.1.4. SPACER TYPE/SIZE: 3/8" NOMINAL CARDINAL ENDUR IG EDGE SPACER (A1-D) ALUMINUM
 - 6.1.5. GLAZING SYSTEM: INTERIOR GLAZED WITH (2)-LEAF DUAL DUROMETER AND SIKAFLEX 552 BACKBEDDING WITH A SNAP-IN (2)-LEAF DUAL DUROMETER RIGID VINYL GLAZING BEAD.
 - 6.2. ALL SETTING BLOCKS AND GASKET MATERIALS SHALL BE IN COMPLIANCE WITH THE CURRENT EDITION OF THE FLORIDA BUILDING CODE. SETTING BLOCKS SHALL BE NEOPRENE WITH A 70 TO 90 SHORE A DUROMETER. GASKET MATERIALS SHALL BE EDPM WITH A MINIMUM 60 SHORE A DUROMETER.
 - 6.3. AS TESTED GLAZING MEETS ASTM E1300-09e FOR THE DESIGN CONDITIONS SHOWN IN THIS PRODUCT APPROVAL DOCUMENT.
7. APPROVED IMPACT PROTECTIVE SYSTEM IS NOT REQUIRED FOR THIS PRODUCT IN WIND BORNE DEBRIS REGIONS INCLUDING THE HVHZ.
8. SHIM AS REQUIRED AT EACH INSTALLATION ANCHOR WITH LOAD BEARING SHIM. SHIM WHERE SPACE OF 1/16" OR GREATER OCCURS. MAXIMUM ALLOWABLE SHIM STACK TO BE 1/4".
9. FOR ANCHORING INTO CONCRETE/MASONRY USE 1/4" HEX HEAD TAPCONS WITH SUFFICIENT LENGTH TO ACHIEVE A 1 1/2" MINIMUM EMBEDMENT INTO CONCRETE WITH 1 1/2" MINIMUM EDGE DISTANCE AND 1" MINIMUM EMBEDMENT INTO MASONRY WITH 2" MINIMUM EDGE DISTANCE. LOCATE ANCHORS AS SHOWN IN ELEVATIONS AND INSTALLATION DETAILS. 4" MINIMUM SPACING BETWEEN ADJACENT ANCHORS REQUIRED. ANCHOR LOCATIONS HAVE +/- 1" TOLERANCE.
10. FOR ANCHORING INTO WOOD FRAMING OR 2X BUCK USE ONE OF THE FOLLOWING:
 - 10.1. SHOWN IN SECTION VIEWS: #12 PAN HEAD WOOD SCREWS (WS) WITH SUFFICIENT LENGTH TO ACHIEVE A 1 3/8" MINIMUM EMBEDMENT INTO SUBSTRATE WITH 7/8" MINIMUM EDGE DISTANCE AND MINIMUM ANCHOR-TO-ANCHOR SPACING OF 2" ON CENTER. LOCATE ANCHORS AS SHOWN IN ELEVATIONS AND INSTALLATION DETAILS. ANCHOR LOCATIONS HAVE +/- 1" TOLERANCE.
 - 10.2. NOT SHOWN IN SECTION VIEWS: #14 PAN HEAD WOOD SCREWS (WS) WITH SUFFICIENT LENGTH TO ACHIEVE A 1 1/2" MINIMUM EMBEDMENT INTO SUBSTRATE WITH 1" MINIMUM EDGE DISTANCE AND MINIMUM ANCHOR-TO-ANCHOR SPACING OF 2" ON CENTER. LOCATE ANCHORS AS SHOWN IN ELEVATIONS AND INSTALLATION DETAILS. ANCHOR LOCATIONS HAVE +/- 1" TOLERANCE.
11. FOR ANCHORING INTO METAL STRUCTURE USE #14 PAN OR HEX HEAD SHEET METAL OR SELF DRILLING SCREWS WITH SUFFICIENT LENGTH TO ACHIEVE 3 THREADS MINIMUM BEYOND STRUCTURE INTERIOR WALL WITH 3/4" MINIMUM EDGE DISTANCE AND MINIMUM ANCHOR-TO-ANCHOR SPACING OF 2" ON CENTER. LOCATE ANCHORS AS SHOWN IN ELEVATIONS AND INSTALLATION DETAILS. ANCHOR LOCATIONS HAVE +/- 1" TOLERANCE.
12. ALL FASTENERS TO BE CORROSION RESISTANT OR HAVE A CORROSION RESISTANT COATING
13. INSTALLATION ANCHORS SHALL BE INSTALLED IN ACCORDANCE WITH ANCHOR MANUFACTURER'S INSTALLATION INSTRUCTIONS AND ANCHORS SHALL NOT BE USED IN SUBSTRATES WITH STRENGTHS LESS THAN THE MINIMUM STRENGTH SPECIFIED BELOW:
 - 13.1. WOOD - MINIMUM SPECIFIC GRAVITY OF (G) 0.42 (NON-HVHZ) AND 0.55 (HVHZ)
 - 13.2. CONCRETE - MINIMUM COMPRESSIVE STRENGTH OF 2500 PSI
 - 13.3. MASONRY - STRENGTH CONFORMANCE TO ASTM C-90, MEDIUM WEIGHT WITH DENSITY > 117 PCF
 - 13.4. METAL SUBSTRATE: STEEL 18GA (0.0428"), Fy = 33KSI / Fu = 45 KSI OR ALUMINUM 6063-T5 0.048" THICK MINIMUM.
 - 13.4.1. METAL SUBSTRATE TO MEET MINIMUM FBC HVHZ CODE REQUIREMENTS.

DESIGN PRESSURE RATING (PSF)	IMPACT RATING
±55.0 PSF	LARGE MISSILE IMPACT

TABLE OF CONTENTS	
SHEET	DESCRIPTION
1	NOTES AND DESIGN PRESSURE CHART
2	ELEVATION & ANCHOR LOCATION
3	HORIZONTAL & VERTICAL SECTIONS - WOOD AND CONCRETE/MASONRY SUBSTRATE INSTALLATION
4	HORIZONTAL & VERTICAL SECTIONS - METAL SUBSTRATE INSTALLATION, GLAZING DETAIL
5	COMPONENTS, FRAME CORNER CONSTRUCTION AND BILL OF MATERIALS

PROJECT NO. ACE-2024-104

REGENCY PLUS, INC.
2000 LOCUST GAP HIGHWAY
MT. CARMEL, PA. 17851

TITLE: SERIES TECH 5108 VINYL FIXED WINDOW (LMI)
NOTES AND DESIGN PRESSURE CHART

DRAWN BY: RJA
DATE: 2/20/24

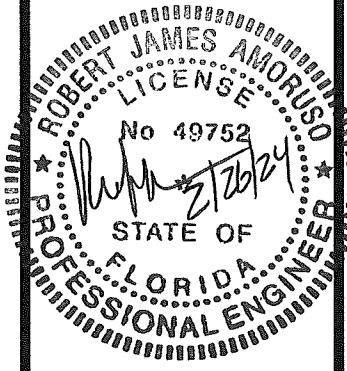
SCALE: N.T.S.
DRAWING NO: RPLS0060

REV: L
SHEET: 1 OF 5

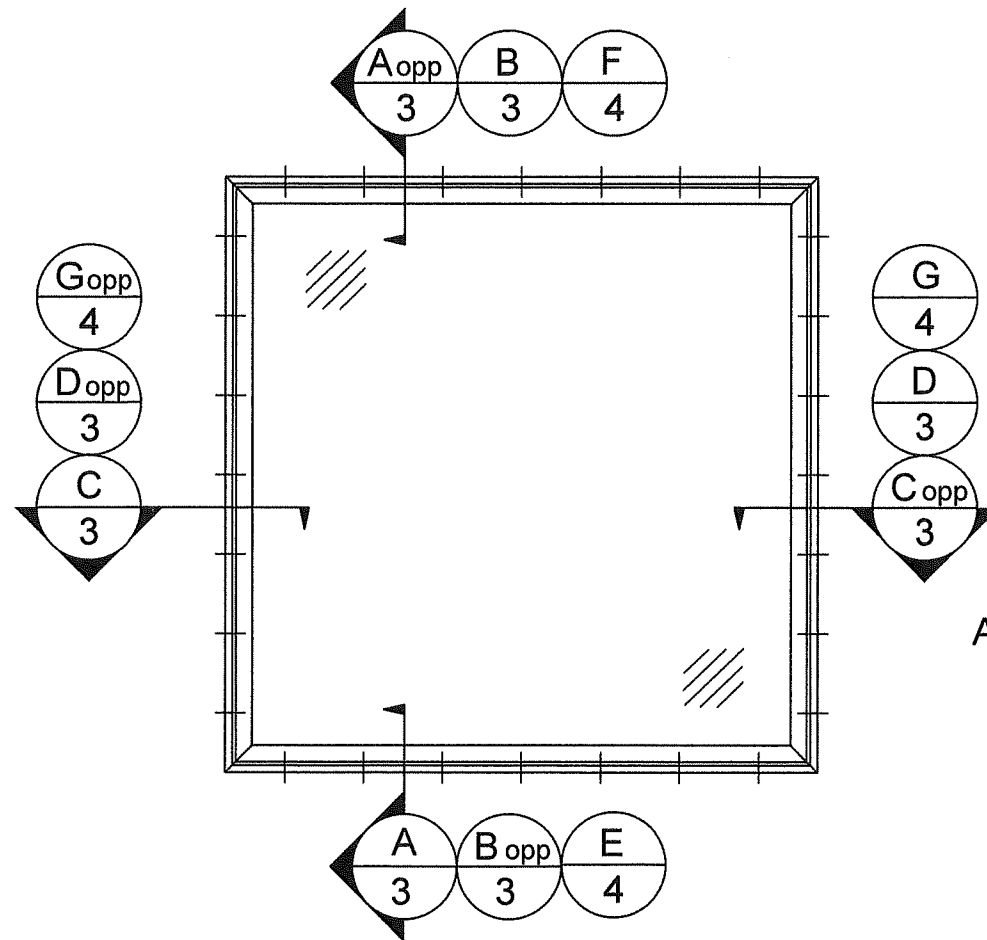
UPDATE TO 8TH ED. (2023) FBC

DESCRIPTION
DATE
BY
RJA
2/20/24

Robert J. Amoruso, P.E.
Florida P.E. No. 49752

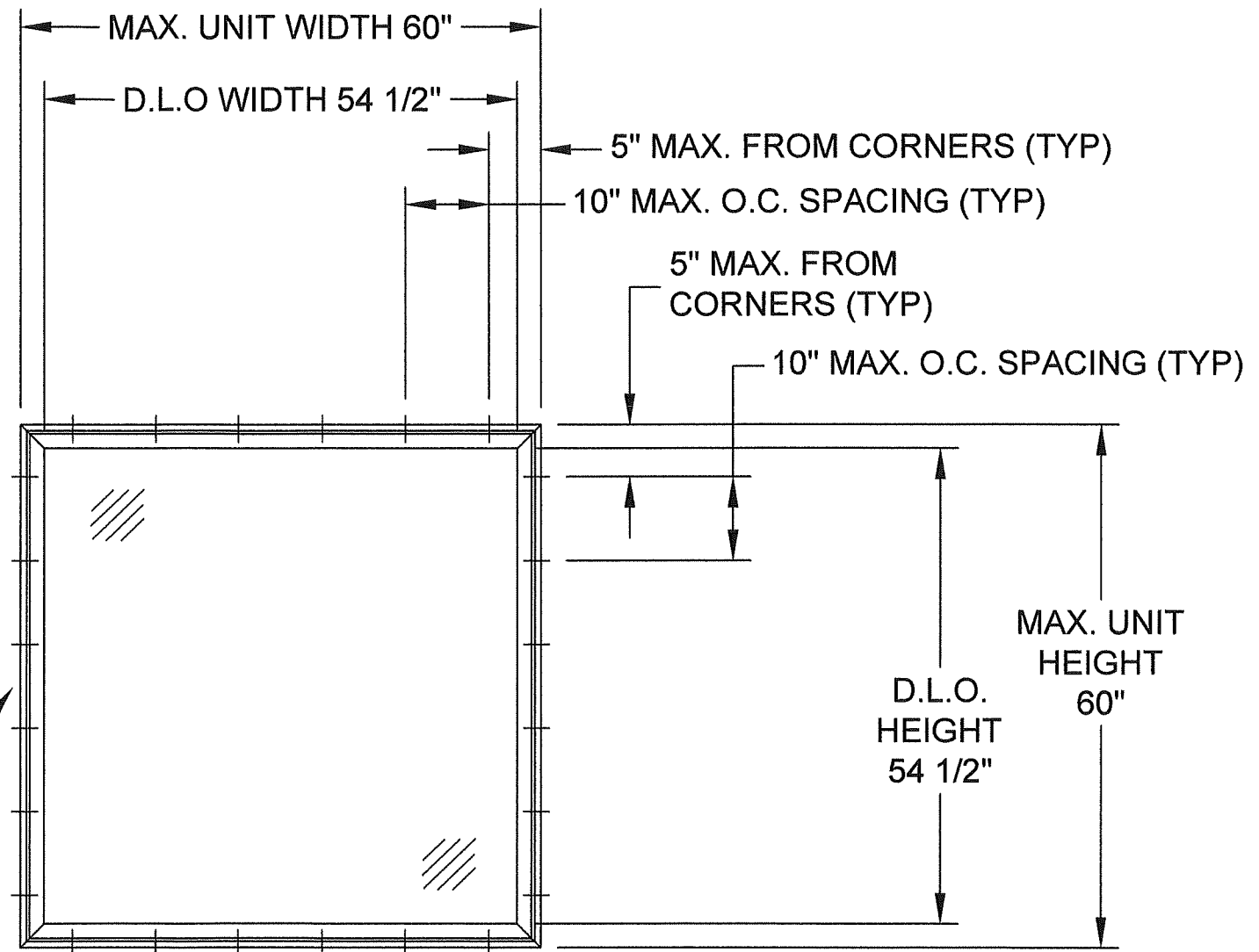


PRODUCT REVISED
As complying with the Florida Building Code
NOA-No. **24-0306.04**
Expiration Date: **01/28/2030**
By: *Manuel Fern*
Miami-Dade Product Control



ELEVATION
EXTERIOR VIEW

INSTALLATION ANCHOR (TYP.)



ANCHOR LAYOUT
THROUGH-FRAME INSTALLATION
EXTERIOR VIEW

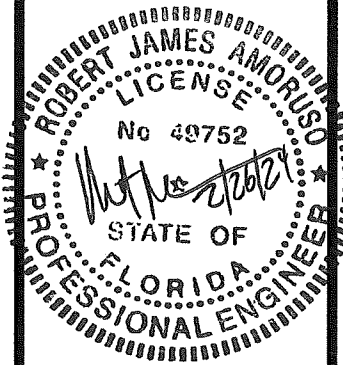
PROJECT NO. ACE-2024-104

REV	DESCRIPTION	DATE	BY
L	UPDATE TO 8TH ED. (2023) FBC	2/20/24	RJA

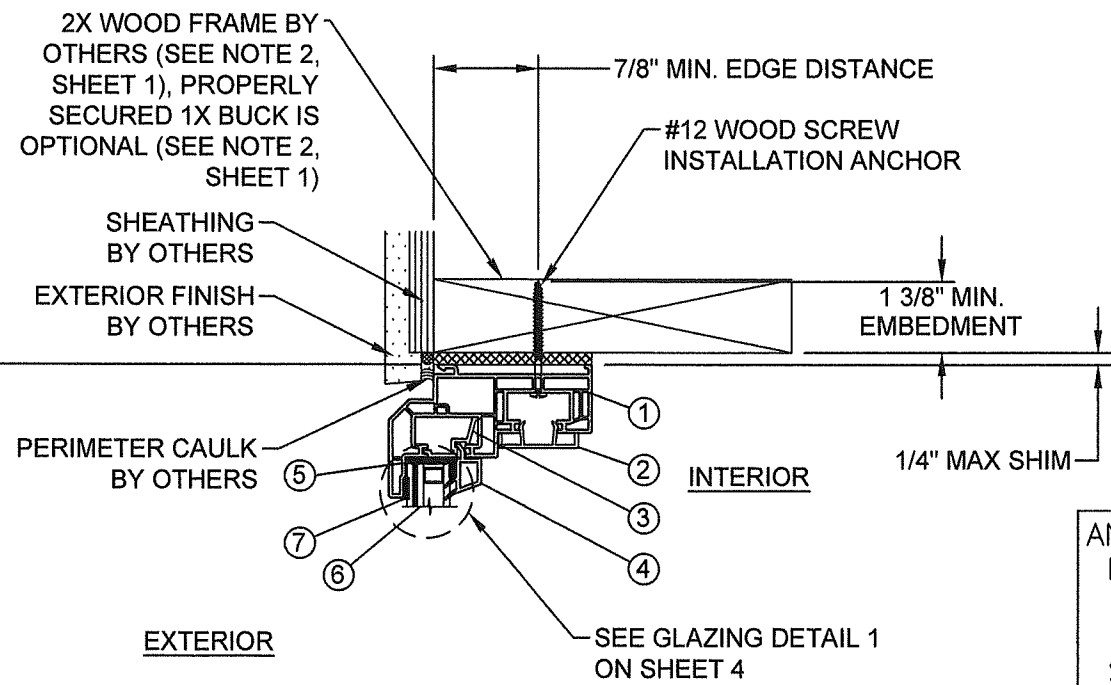
REGENCY PLUS, INC.
2000 LOCUST GAP HIGHWAY
MT. CARMEL, PA 17851

TITLE	SERIES TECH 5108 VINYL FIXED WINDOW (LMI) ELEVATION & ANCHOR LOCATION
DRAWN BY	RJA
DATE	2/20/24
SCALE	N.T.S.
DRAWING NO.	RPLS0060
REV.	L
SHEET	2 OF 5

Robert J. Amoruso, P.E.
Florida P.E. No. 49752

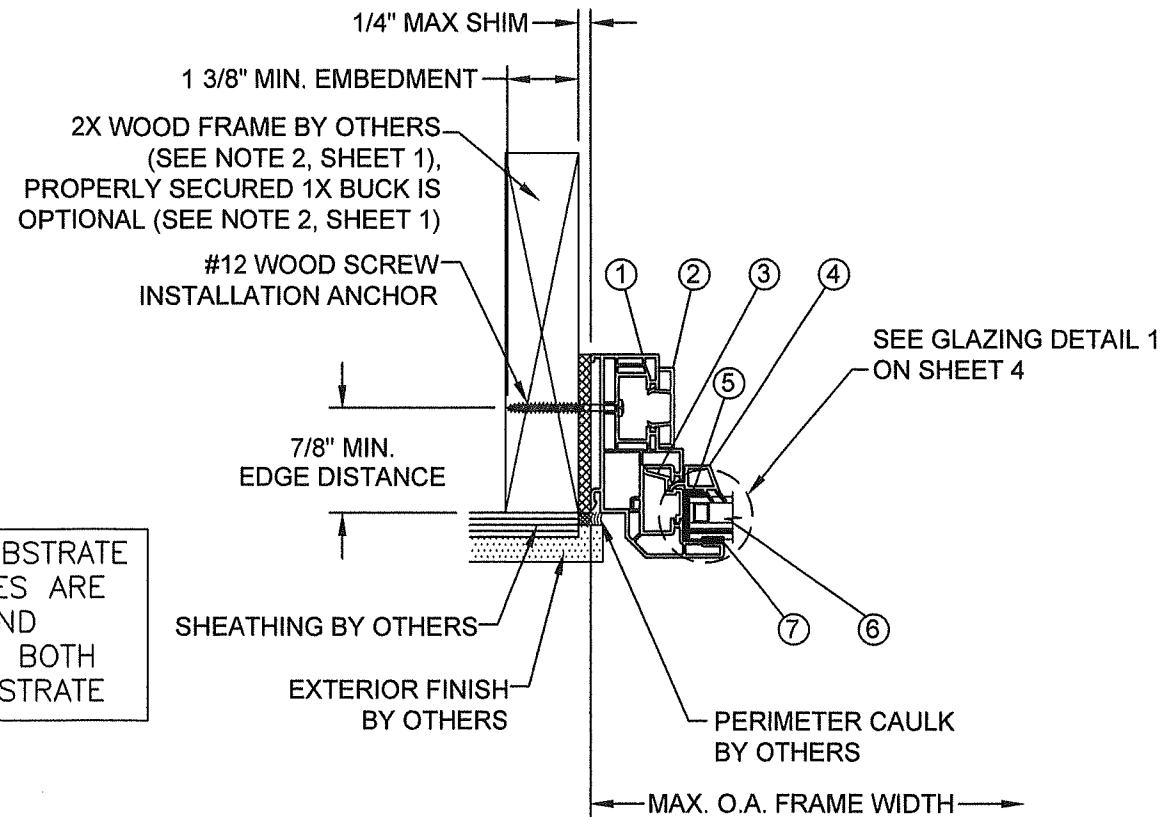


PRODUCT REVISED
As complying with the Florida Building Code
NOA-No. **24-0306.04**
Expiration Date: **01/28/2030**
By: *Manuel Ferrn*
Miami-Dade Product Control

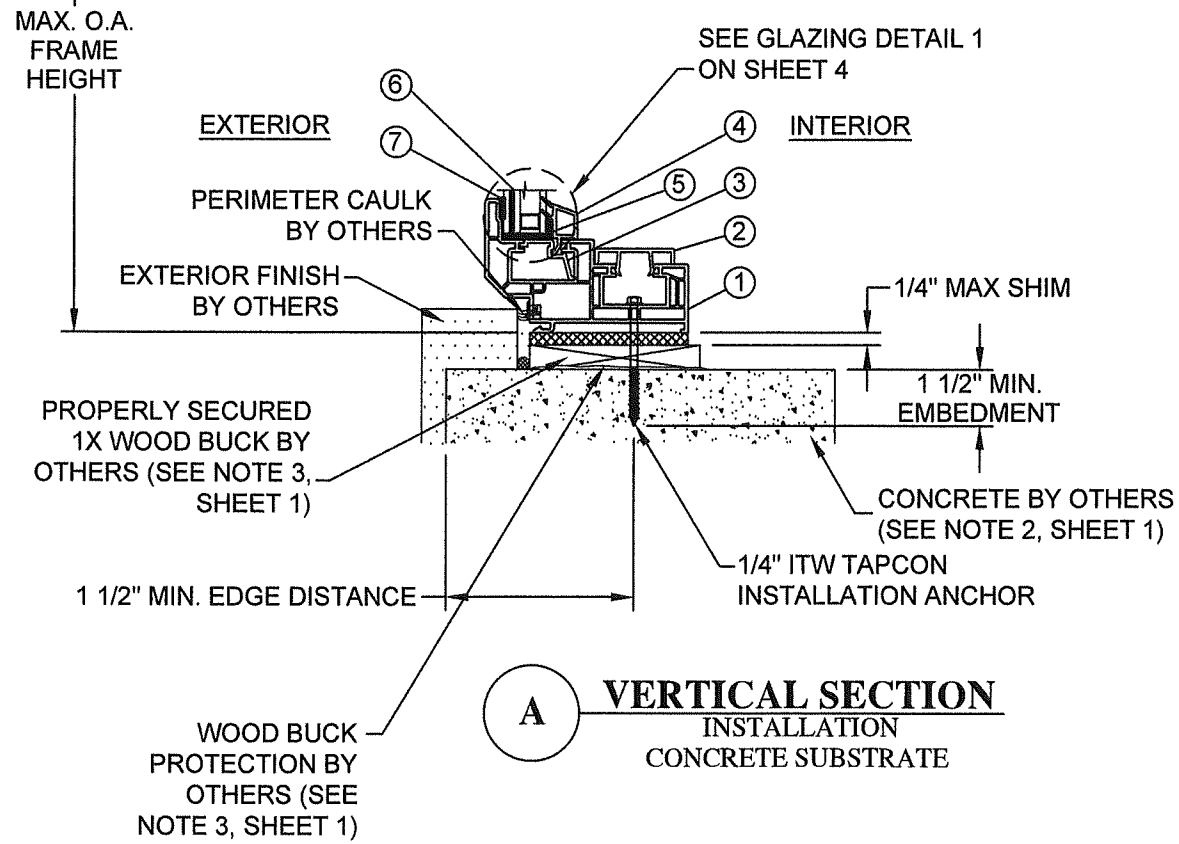


**B VERTICAL SECTION
INSTALLATION
WOOD FRAME SUBSTRATE**

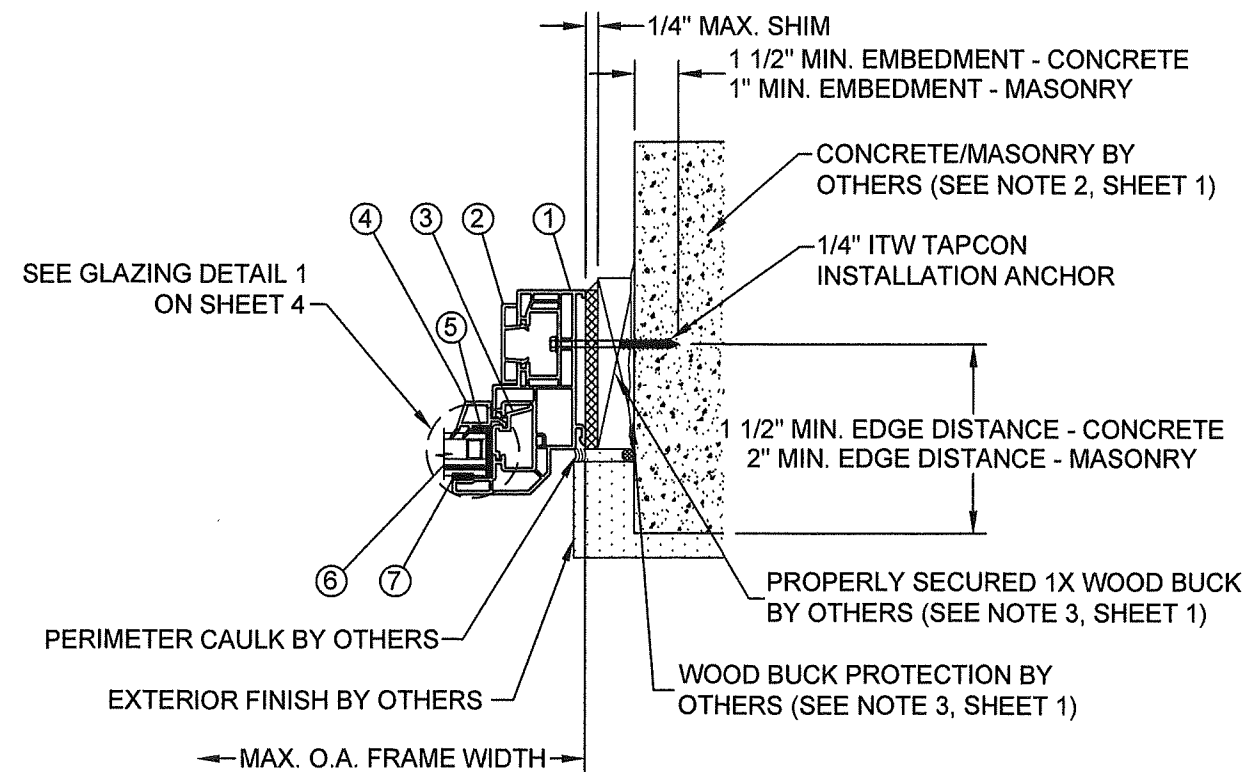
ANCHOR-TO-SUBSTRATE
EDGE DISTANCES ARE
TYPICAL AND
MEASURED TO BOTH
SIDES OF SUBSTRATE



**C HORIZONTAL SECTION
INSTALLATION
WOOD FRAME SUBSTRATE**



**A VERTICAL SECTION
INSTALLATION
CONCRETE SUBSTRATE**



**D HORIZONTAL SECTION
INSTALLATION
CONCRETE / MASONRY SUBSTRATE**

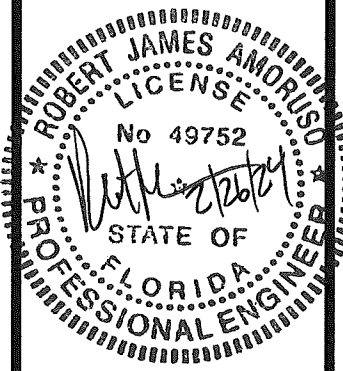
PROJECT NO. ACE-2024-104

REGENCY PLUS, INC.
2000 LOCUST GAP HIGHWAY
MT. CARMEL, PA 17851

TITLE: SERIES TECH 5108 VINYL FIXED WINDOW (LMI)
HOR & VERT SECTIONS - WOOD & CONCRETE/MASONRY SUBSTRATE

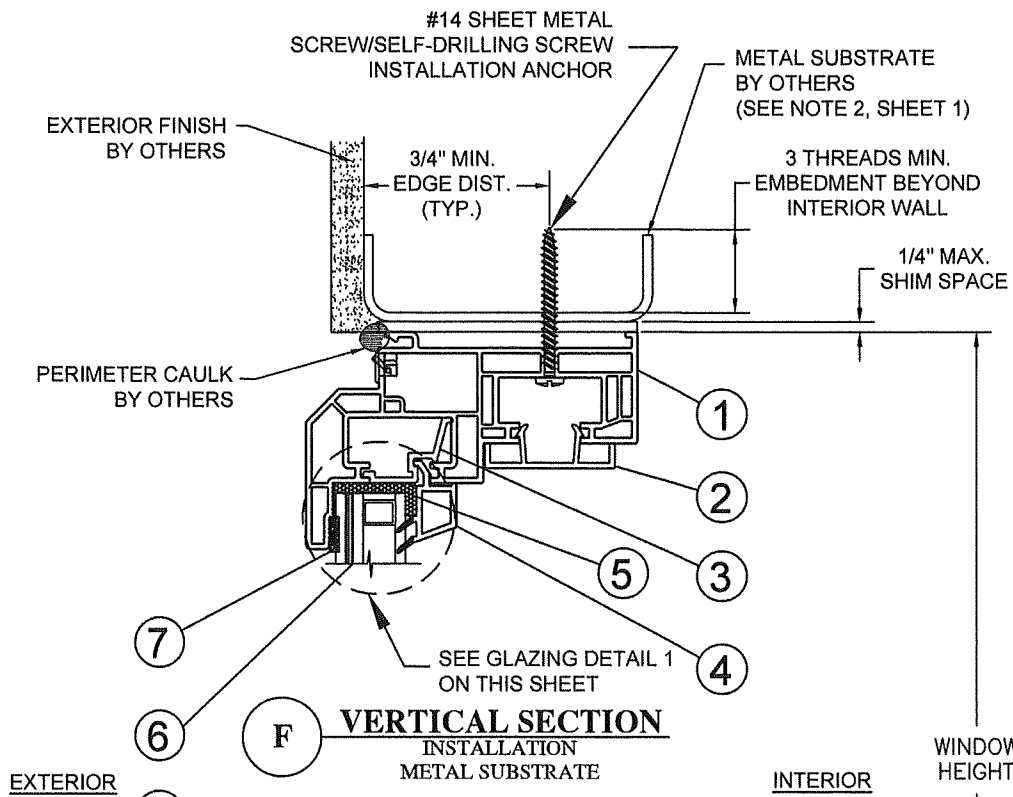
DATE:	2/20/24
DRAWN BY:	RJA
SCALE:	N.T.S.
REV:	L
DRAWING NO.:	RPLS0060
SHEET:	3 OF 5

Robert J. Amoruso, P.E.
Florida P.E. No. 49752

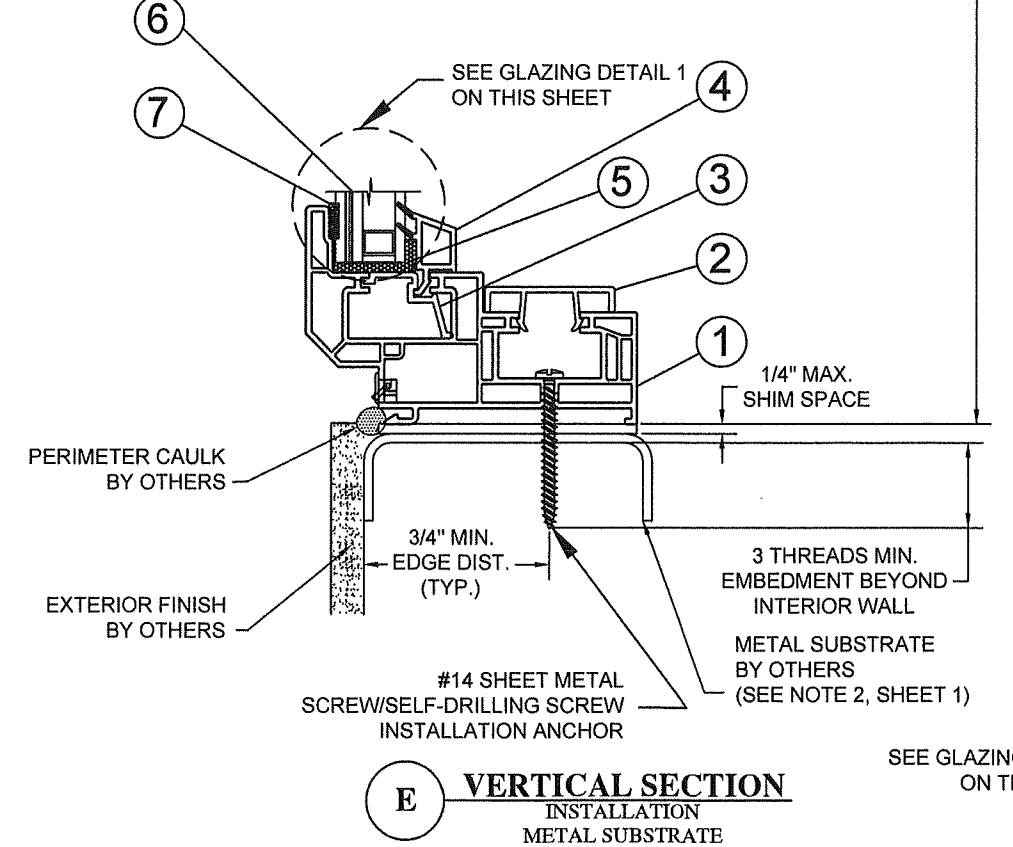


PRODUCT REVISED
As complying with the Florida
Building Code
NOA-No. **24-0306.04**
Expiration Date: **01/28/2030**
By: *Manuel Ferris*
Miami-Dade Product Control

DATE	2/20/24	BY	RJA
DESCRIPTION	UPDATE TO 8TH ED. (2023) FBC	REV	L



F VERTICAL SECTION
INSTALLATION
METAL SUBSTRATE

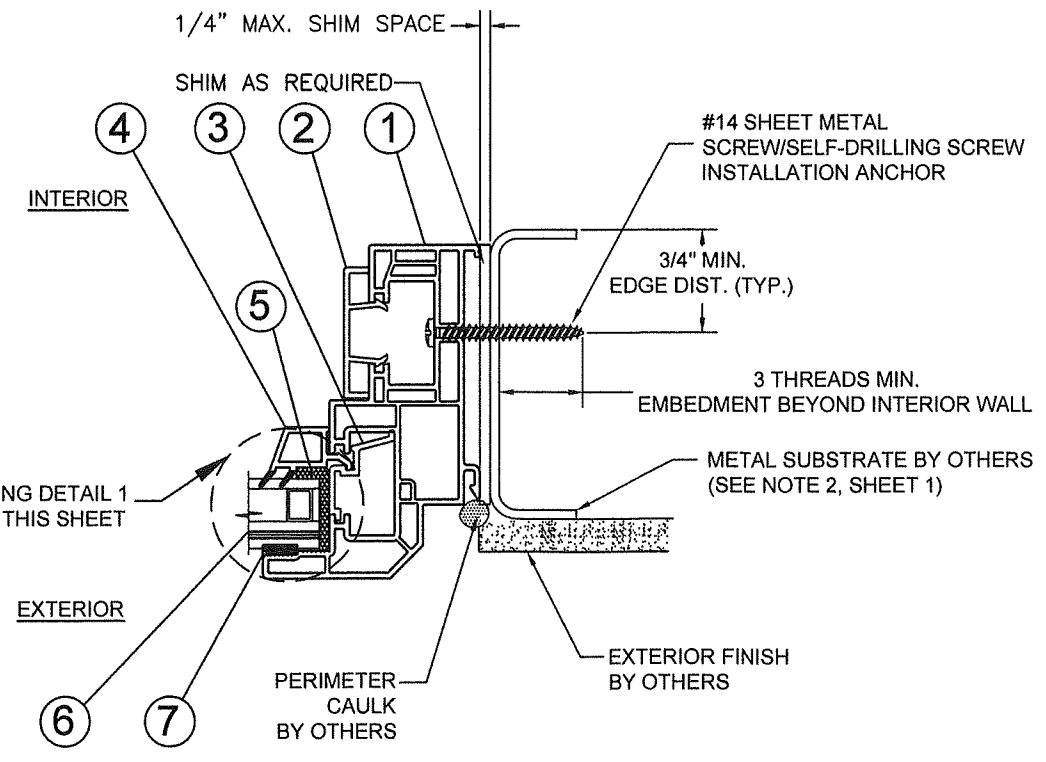


E VERTICAL SECTION
INSTALLATION
METAL SUBSTRATE

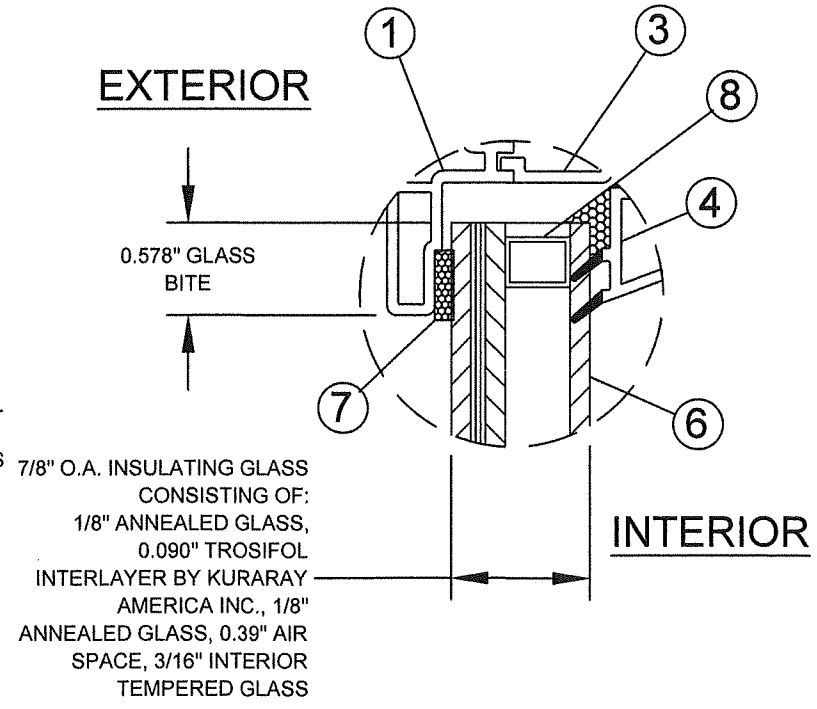
ANCHOR-TO-SUBSTRATE
EDGE DISTANCES ARE
TYPICAL AND
MEASURED TO BOTH
SIDES OF SUBSTRATE

INSTALLATION NOTES:

1. APPROVED INSTALLATION SUBSTRATES INCLUDE THE FOLLOWING:
 - 1.1. WOOD - MINIMUM SPECIFIC GRAVITY OF (G) 0.42 (NON-HVHZ) AND 0.55 (HVHZ)
 - 1.2. CONCRETE - MINIMUM COMPRESSIVE STRENGTH OF 2500 PSI
 - 1.3. MASONRY - STRENGTH CONFORMANCE TO ASTM C-90, MEDIUM WEIGHT WITH DENSITY > 117 PCF
 - 1.4. METAL SUBSTRATE: STEEL 18GA (0.0428"), F_y = 33KSI / F_u = 45 KSI OR ALUMINUM 6063-T5 0.048" THICK MINIMUM.
 - 1.4.1. METAL SUBSTRATE TO MEET MINIMUM FBC HVHZ CODE REQUIREMENTS.
2. 2X WOOD FRAMING, 1X OR 2X WOOD BUCK, METAL FRAMING AND CONCRETE/MASONRY OPENING TO BE DESIGNED AND ANCHORED TO PROPERLY TRANSFER ALL LOADS TO STRUCTURE. FRAMING AND CONCRETE/MASONRY OPENING IS THE RESPONSIBILITY OF THE ARCHITECT OR ENGINEER OF RECORD.
3. 1X BUCK OVER CONCRETE/MASONRY IS OPTIONAL. WHEN 1X BUCK IS USED, INSTALLATION ANCHORS WILL PASS THROUGH WINDOW FRAME AND 1X BUCK INTO CONCRETE/MASONRY SUBSTRATE. WHEN USED, 1X BUCKS SHALL BE DESIGNED AND ANCHORED TO PROPERLY TRANSFER ALL LOADS TO STRUCTURE AND IS THE RESPONSIBILITY OF THE ARCHITECT OR ENGINEER OF RECORD. DISSIMILAR MATERIALS MUST BE SEPARATED WITH APPROVED COATING OR MEMBRANE. SELECTION OF COATING OR MEMBRANE IS THE RESPONSIBILITY OF THE ARCHITECT OR ENGINEER OF RECORD.
4. SHIM AS REQUIRED AT EACH INSTALLATION ANCHOR WITH LOAD BEARING SHIM. SHIM WHERE SPACE OF 1/16" OR GREATER OCCURS. MAXIMUM ALLOWABLE SHIM STACK TO BE 1/4".
5. FOR ANCHORING INTO CONCRETE/MASONRY USE 1/4" HEX HEAD TAPCONS WITH SUFFICIENT LENGTH TO ACHIEVE A 1 1/2" MINIMUM EMBEDMENT INTO CONCRETE WITH 1 1/2" MINIMUM EDGE DISTANCE AND 1" MINIMUM EMBEDMENT INTO MASONRY WITH 2" MINIMUM EDGE DISTANCE. LOCATE ANCHORS AS SHOWN IN ELEVATIONS AND INSTALLATION DETAILS. 4" MINIMUM SPACING BETWEEN ADJACENT ANCHORS REQUIRED. ANCHOR LOCATIONS HAVE +/- 1" TOLERANCE.
6. FOR ANCHORING INTO WOOD FRAMING OR 2X BUCK USE ONE OF THE FOLLOWING:
 - 6.1. SHOWN IN SECTION VIEWS: #12 PAN HEAD WOOD SCREWS (WS) WITH SUFFICIENT LENGTH TO ACHIEVE A 1 3/8" MINIMUM EMBEDMENT INTO SUBSTRATE WITH 7/8" MINIMUM EDGE DISTANCE AND MINIMUM ANCHOR-TO-ANCHOR SPACING OF 2" ON CENTER. LOCATE ANCHORS AS SHOWN IN ELEVATIONS AND INSTALLATION DETAILS. ANCHOR LOCATIONS HAVE +/- 1" TOLERANCE.
 - 6.2. NOT SHOWN IN SECTION VIEWS: #14 PAN HEAD WOOD SCREWS (WS) WITH SUFFICIENT LENGTH TO ACHIEVE A 1 1/2" MINIMUM EMBEDMENT INTO SUBSTRATE WITH 1" MINIMUM EDGE DISTANCE AND MINIMUM ANCHOR-TO-ANCHOR SPACING OF 2" ON CENTER. LOCATE ANCHORS AS SHOWN IN ELEVATIONS AND INSTALLATION DETAILS. ANCHOR LOCATIONS HAVE +/- 1" TOLERANCE.
7. FOR ANCHORING INTO METAL STRUCTURE USE #14 PAN OR HEX HEAD SHEET METAL OR SELF DRILLING SCREWS WITH SUFFICIENT LENGTH TO ACHIEVE 3 THREADS MINIMUM BEYOND STRUCTURE INTERIOR WALL WITH 3/4" MINIMUM EDGE DISTANCE AND MINIMUM ANCHOR-TO-ANCHOR SPACING OF 2" ON CENTER. LOCATE ANCHORS AS SHOWN IN ELEVATIONS AND INSTALLATION DETAILS. ANCHOR LOCATIONS HAVE +/- 1" TOLERANCE.
8. INTERIOR AND EXTERIOR FINISHES BY OTHERS. NOT SHOWN FOR CLARITY.
9. PERIMETER AND JOINT SEALANT BY OTHERS TO BE DESIGNED AND/OR SPECIFIED IN ACCORDANCE WITH ASTM E2112.



G HORIZONTAL SECTION
INSTALLATION
METAL SUBSTRATE



GLAZING DETAIL 1

PROJECT NO. ACE-2024-104				
			2/20/24	RJA
			UPDATE TO 8TH ED. (2023) FBC	
				DATE
				BY
				REV
				DESCRIPTION

REGENCY PLUS, INC.
2000 LOCUST GAP HIGHWAY
MT. CARMEL, PA 17851

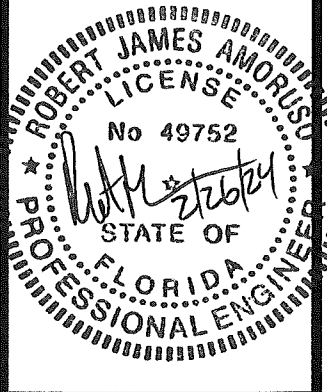
TITLE: SERIES TECH 5108 VINYL FIXED WINDOW (LMI)
HORL & VERT SECTIONS - METAL SUBSTRATE, GLAZING DETAIL

DATE: 2/20/24
DRAWING NO: RPLS0060
SHEET: 4 OF 5

DRAWN BY: RJA
SCALE: N.T.S.
REV: L

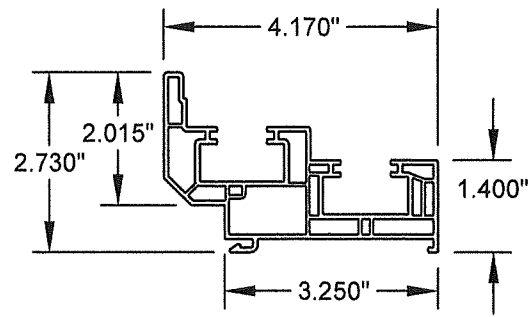
ROBERT J. AMORUSO
FLORIDA P.E. NO. 49752
226 N. NOVA RD., #142
ORMOND BEACH, FL 32174
RJAENGPE@GMAIL.COM

Robert J. Amoruso, P.E.
Florida P.E. No. 49752

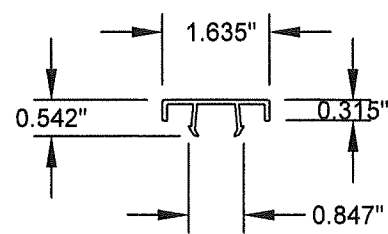


PRODUCT REVISED
As complying with the Florida Building Code
NOA-No. 24-0306.04
Expiration Date: 01/28/2030
By: *Manuel Fern*
Miami-Dade Product Control

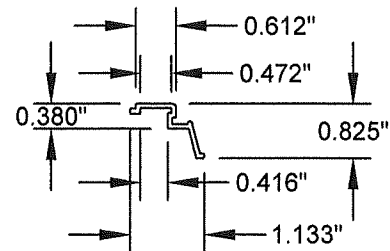
① MASTER FRAME
0.070" TYPICAL WALL THICKNESS



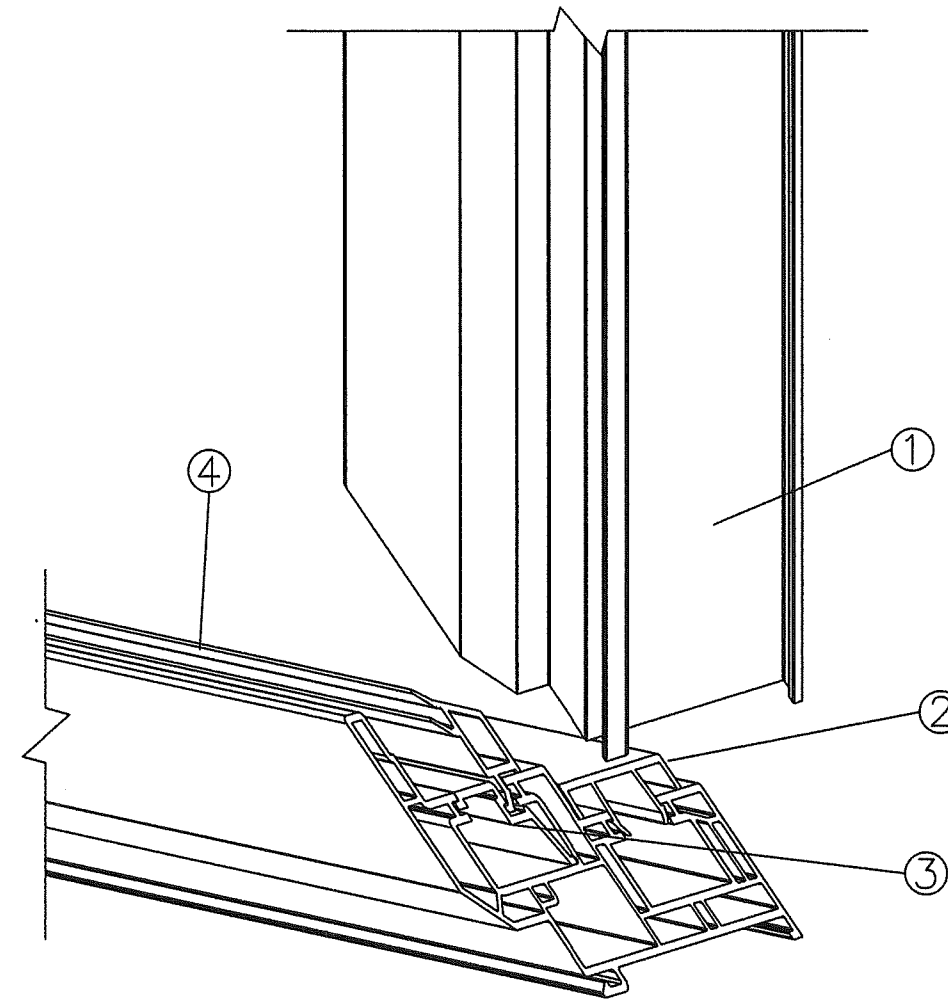
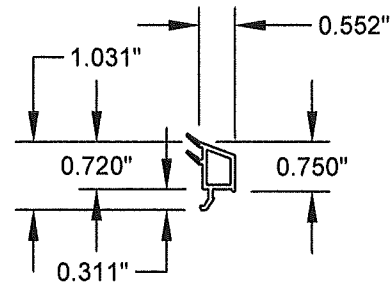
② SASH STOP FRAME COVER
0.070" TYPICAL WALL THICKNESS



③ POCKET INSERT
0.070" TYPICAL WALL THICKNESS



④ GLAZING BEAD
0.070" TYPICAL WALL THICKNESS



CORNER CONSTRUCTION

Series Tech 5108 Miami Dade Impact Fixed / Bill of Material

Item Numbers	Part Numbers	Description	Supplier
1	IV White 1060 / 7780 / AG	Master Frame	Vision Extr. Grp. LTD**
2	IV White 1070 / 7736	Sash Stop Frame Cover	Vision Extr. Grp. LTD**
3	IV White 1079 / 7737	Pocket Insert / Center Section PW	Vision Extr. Grp. LTD**
4	IV White 1103 / 7726	PW Glazing Bead	Vision Extr. Grp. LTD**
5	552 Sikaflex Black	Wet Glaze (Fixed Center Section)	Sika US
6	Hurricane Laminate Impact	Operating Sash E366 2.7mm / 0.90 PVB (Kuraray America, Inc. Trosifil) Interlayer IG	Cardinal
7	VEN-VG-1208B	Black Glazing Tape 1/8 x 3/8 x 85' (Fixed Center Section)	Industrial Sales
8	2NB-8K-0.0062-028-064	Glass Setting Blocks Sash (Neoprene w/70 to 90 Shore A Durometer)	Frank Lowe
9	n/a	Endur IG Edge Spacer (A1-D) Aluminum	Cardinal
Not Shown	H-808WHZ	Weep Hole Cover White	Product Design
Not Shown	W0511022	30PP12-18P50-9/16 X1 3/8 X 3 Foam Block	Lindenmeyr

** VISION EXTRUSIONS GROUP LIMITED PER CURRENT MD NOTICE OF ACCEPTANCE (NOA)

PROJECT NO. ACE-2024-104

REV	DESCRIPTION	DATE	BY
L	UPDATE TO 8TH ED. (2023) FBC	2/20/24	RJA

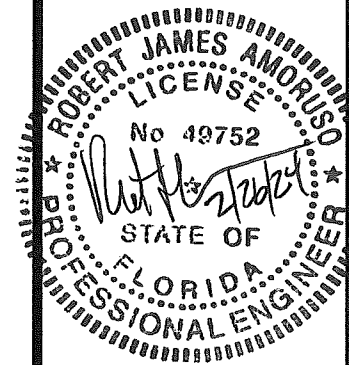
REGENCY PLUS, INC.
2000 LOCUST GAP HIGHWAY
MT. CARMEL, PA 17851

TITLE: SERIES TECH 5108 VINYL FIXED WINDOW (LMI) COMPONENTS, FRAME CORNER CONSTRUCTION AND BOM

DATE: 2/20/24
DRAWING NO: RPLS0060
SHEET: 5 OF 5

ROBERT J. AMORUSO
FLORIDA P.E. NO. 49752
226 N. NOVA RD., #142
ORMOND BEACH, FL 32174
RJAENGPE@GMAIL.COM

Robert J. Amoruso, P.E.
Florida P.E. No. 49752



PRODUCT REVISED
As complying with the Florida Building Code
NOA-No. 24-0306.04
Expiration Date: 01/28/2030
By: *Manuel Fern*
Miami-Dade Product Control