



DEPARTMENT OF REGULATORY AND ECONOMIC RESOURCES (RER)  
BOARD AND CODE ADMINISTRATION DIVISION

## NOTICE OF ACCEPTANCE (NOA)

MIAMI-DADE COUNTY  
PRODUCT CONTROL SECTION

11805 SW 26 Street, Room 208  
Miami, Florida 33175-2474  
T (786) 315-2590 F (786) 315-2599

[www.miamidade.gov/economy](http://www.miamidade.gov/economy)

**ACME Manufacturing Corporation**  
**6532 Tower Lane**  
**Claremore, OK 74019**

### SCOPE:

This NOA is being issued under the applicable rules and regulations governing the use of construction materials. The documentation submitted has been reviewed and accepted by Miami-Dade County RER-Product Control Section to be used in Miami Dade County and other areas where allowed by the Authority Having Jurisdiction (AHJ).

This NOA shall not be valid after the expiration date stated below. The Miami-Dade County Product Control Section (In Miami Dade County) and/or the AHJ (in areas other than Miami Dade County) reserve the right to have this product or material tested for quality assurance purposes. If this product or material fails to perform in the accepted manner, the manufacturer will incur the expense of such testing and the AHJ may immediately revoke, modify, or suspend the use of such product or material within their jurisdiction. RER reserves the right to revoke this acceptance if it is determined by Miami-Dade County Product Control Section that this product or material fails to meet the requirements of the applicable building code.

This product is approved as described herein and has been designed to comply with the Florida Building Code, including the High Velocity Hurricane Zone.

**DESCRIPTION: Trimline Hurricane Series Type TIV and Type TEV Aluminum Gravity Vents**

**APPROVAL DOCUMENT:** Drawing No. **TIV/TEV-HV**, titled "TEV and TIV Hurricane Vents", sheets 1 through 4 of 4, dated 02/02/2021 and 02/18/2022, prepared by ACME Manufacturing Corporation, signed and sealed by Richard O. Boyette, P.E. on 07/16/2024, bearing the Miami-Dade County Product Control revision stamp with the Notice of Acceptance number and approval date by the Miami-Dade County Product Control Section.

**MISSILE IMPACT RATING: Large and Small Missile Impact Resistant**

**LABELING:** Each unit shall bear a permanent label with the manufacturer's name or logo, Claremore, OK, model/series, and following statement: "Miami-Dade County Product Control Approved", unless otherwise noted herein.

**RENEWAL** of this NOA shall be considered after a renewal application has been filed and there has been no change in the applicable building code negatively affecting the performance of this product.

**TERMINATION** of this NOA will occur after the expiration date or if there has been a revision or change in the materials, use, and/or manufacture of the product or process. Misuse of this NOA as an endorsement of any product, for sales, advertising or any other purposes shall automatically terminate this NOA. Failure to comply with any section of this NOA shall be cause for termination and removal of NOA.

**ADVERTISEMENT:** The NOA number preceded by the words Miami-Dade County, Florida, and followed by the expiration date may be displayed in advertising literature. If any portion of the NOA is displayed, then it shall be done in its entirety.

**INSPECTION:** A copy of this entire NOA shall be provided to the user by the manufacturer or its distributors and shall be available for inspection at the job site at the request of the Building Official.

This NOA **revises NOA # 21-1110.04** and consists of this page 1 and evidence pages E-1 and E-2, as well as approval document mentioned above.

The submitted documentation was reviewed by **Carlos M. Utrera, P.E.**

08/15/24



**NOA No. 24-0729.07**  
**Expiration Date: August 18, 2027**  
**Approval Date: August 22, 2024**  
**Page 1**

**NOTICE OF ACCEPTANCE: EVIDENCE SUBMITTED**

**1. Evidence submitted under NOA # 21-1110.04**

**A. DRAWINGS**

1. Drawing No. **TIV/TEV-HV**, titled “TEV and TIV Hurricane Vents”, sheets 1 through 4 of 4, dated 02/02/2021 and 02/18/2022, prepared by ACME Manufacturing Corporation, signed and sealed by Richard O. Boyette, P.E. on 02/20/2022 and 06/30/2022.

**B. TESTS**

1. Test report on 1) Uniform Static Air Pressure Test per FBC, TAS 202-94,  
2) Large Missile Impact Test per FBC, TAS 201-94,  
3) Lateral Force per ASTM E72,  
along with marked-up drawings and installation diagram of TIV Hurricane Aluminum Gravity Vents Curb Mounted, prepared by Intertek, Test Report No. **L9798.01-801-18 R3**, dated 08/24/2021, with revision dated 06/14/2022, signed and sealed by Tyler Westerling, P.E.
2. Test report on 1) Uniform Static Air Pressure Test per FBC, TAS 202-94,  
2) Large Missile Impact Test per FBC, TAS 201-94,  
3) Lateral Force per ASTM E72,  
along with marked-up drawings and installation diagram of TEV Hurricane Aluminum Gravity Vents Curb Mounted, prepared by Intertek, Test Report No. **L9799.01-801-18 R3**, dated 09/03/2021, with revision dated 06/14/2022, signed and sealed by Tyler Westerling, P.E.

**C. CALCULATIONS**

1. Anchor verification calculations, prepared by Rick Boyette Consulting, Inc, dated 02/20/2022, signed and sealed by Richard O. Boyette, P.E.

**D. QUALITY ASSURANCE**

1. Miami-Dade Department of Regulatory and Economic Resources (RER).

**E. MATERIAL CERTIFICATIONS**

1. None.

**F. STATEMENTS**

1. Statement letter of code conformance to the 7<sup>th</sup> edition (2020) of the FBC, issued by Rick Boyette Consulting, Inc, dated 02/20/2022, signed and sealed by Richard O. Boyette, P.E.
2. Statement letter of no financial interest, issued by Rick Boyette Consulting, Inc, dated 02/20/2022, signed and sealed by Richard O. Boyette, P.E.



---

**Carlos M. Utrera, P.E.**  
**Product Control Examiner**  
**NOA No. 24-0729.07**  
**Expiration Date: August 18, 2027**  
**Approval Date: August 22, 2024**

**NOTICE OF ACCEPTANCE: EVIDENCE SUBMITTED**

**2. New evidence submitted**

**A. DRAWINGS**

1. Drawing No. **TIV/TEV-HV**, titled “TEV and TIV Hurricane Vents”, sheets 1 through 4 of 4, dated 02/02/2021 and 02/18/2022, prepared by ACME Manufacturing Corporation, signed and sealed by Richard O. Boyette, P.E. on 07/16/2024.

**B. TESTS**

1. None

**C. CALCULATIONS**

1. None.

**D. QUALITY ASSURANCE**

1. Miami-Dade Department of Regulatory and Economic Resources (RER).

**E. MATERIAL CERTIFICATIONS**

1. None.

**F. STATEMENTS**

1. Statement letter of code conformance to the 8<sup>th</sup> edition (2023) of the FBC, issued by Rick Boyette Consulting, Inc, dated 07/06/2024, signed and sealed by Richard O. Boyette, P.E.
2. Statement letter of no financial interest, issued by Rick Boyette Consulting, Inc, dated 07/06/2024, signed and sealed by Richard O. Boyette, P.E.



---

**Carlos M. Utrera, P.E.**  
**Product Control Examiner**  
**NOA No. 24-0729.07**  
**Expiration Date: August 18, 2027**  
**Approval Date: August 22, 2024**

NOTES

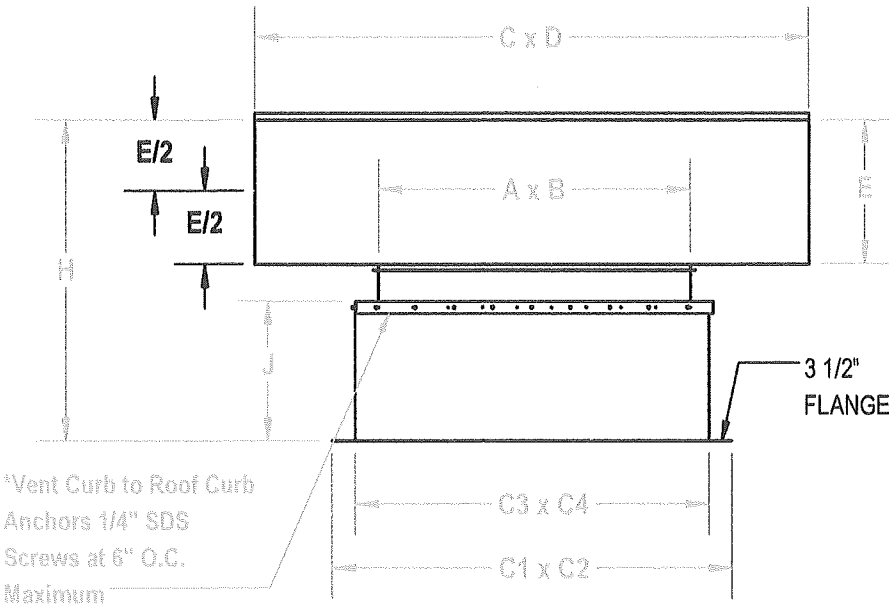
- a. Product evaluated in accordance with requirements of 2023 FBC ASCE 7-23.
- b. Roof Structure must be designed to withstand the weight and loading transmitted by the rooftop vent.
- c. This approval is for the structural capacity of the exterior housing only, it does not include any interior mechanism and/or electric part.
- d. The rooftop vent has not been tested for wind driven rain according to Florida Building Code, TAS 100(A). It cannot be installed within the ridge area FBC 1523.6.5.2.13.
- e. All fasteners must be corrosion resistant. hot-dip Galv or stainless steel
- f. The specimen for Miami-Dade County Performance Test as reported in ATI test report No. A7765.01-802-18 was given a temporary designation "EV-Hooded".
- g. Approved for use in HVHZ
- h. Fu1: Ultimate lateral force per Model TEV, Size 5454

Fu1= 3,000 LBS

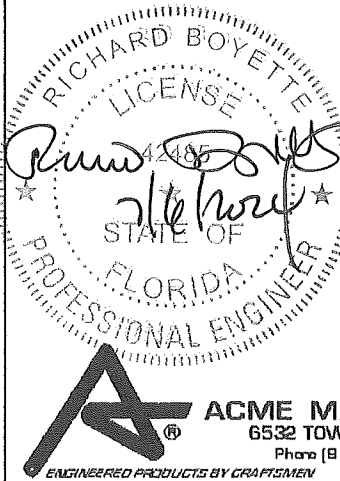
Fu1

3 1/2" FLANGE

PLAN VIEW



ELEVATION VIEW  
Dimensions (Inches)



**ACME MANUFACTURING CORP.**  
6532 TOWER LANE, CLAREMORE, OK 74019  
Phone (918) 266-3097 Fax (918) 266-3091  
ENGINEERED PRODUCTS BY CRAFTSMEN

LET. REVISION RECORD  
A Update to 2023 FBC

Large Missile Impact Resistant  
Max Rated design pressure: +53.0 / -112.0 PSF

TABLE: TEV-HV Hurricane Vents


Size	A	B	C	D	E	F	G	H	J	C1	C2	C3	C4	Max Vent Weight	Max Curb Weight	Max Fan Weight	*# 1/4" SDS Screws
1254	12	54	21	63	8	16	58	56	42	26	68	19	61	67	122	140	30
1354	13	54	23	64	8	17	58	56	42	27	68	20	61	79	124	145	30
1454	14	54	24	64	8	18	58	56	42	28	68	21	61	79	125	152	30
1554	15	54	26	65	8	19	58	56	42	29	68	22	61	90	127	159	30
1654	16	54	27	65	8	20	58	56	42	30	68	23	61	90	128	165	30
1754	17	54	29	66	8	21	58	56	42	31	68	24	61	98	130	179	32
1854	18	54	30	66	9	22	58	57	42	32	68	25	61	98	131	179	32
1954	19	54	32	67	9	23	58	57	42	33	68	26	61	116	133	201	32
2054	20	54	33	67	9	24	58	57	42	34	68	27	61	116	134	203	32
2154	21	54	34	67	10	25	58	58	42	35	68	28	61	135	136	222	32
2254	22	54	36	68	10	26	58	58	42	36	68	29	61	135	137	224	32
2354	23	54	37	68	10	27	58	58	42	37	68	30	61	153	139	244	34
2454	24	54	39	69	11	28	58	59	42	38	68	31	61	153	140	246	34
2554	25	54	40	69	12	29	58	60	42	39	68	32	61	177	142	252	34
2654	26	54	41	69	12	30	58	60	42	40	68	33	61	177	143	259	34
2754	27	54	43	70	12	31	58	60	42	41	68	34	61	177	145	267	34
2854	28	54	44	70	13	32	58	61	42	42	68	35	61	177	146	267	34
2954	29	54	45	70	14	33	58	62	42	43	68	36	61	177	148	277	36
3054	30	54	47	71	14	34	58	62	42	44	68	37	61	177	149	277	36
3154	31	54	48	71	14	35	58	62	42	45	68	38	61	203	151	281	36
3254	32	54	49	71	14	36	58	62	42	46	68	39	61	203	153	290	36
3354	33	54	51	72	14	37	58	62	42	47	68	40	61	203	154	296	36
3454	34	54	52	72	14	38	58	62	42	48	68	41	61	203	156	303	36
3554	35	54	53	72	14	39	58	62	42	49	68	42	61	203	157	311	38
3654	36	54	55	73	14	40	58	62	42	50	68	43	61	203	159	311	38
3754	37	54	56	73	16	41	58	64	42	51	68	44	61	231	160	319	38
3854	38	54	57	73	16	42	58	64	42	52	68	45	61	231	162	325	38
3954	39	54	58	73	16	43	58	64	42	53	68	46	61	231	163	332	38
4054	40	54	60	74	16	44	58	64	42	54	68	47	61	231	165	334	38
4154	41	54	61	74	16	45	58	64	42	55	68	48	61	231	166	344	40
4254	42	54	62	74	16	46	58	64	42	56	68	49	61	231	168	349	40
4354	43	54	64	75	16	47	58	64	42	57	68	50	61	258	169	356	40
4454	44	54	65	75	16	48	58	64	42	58	68	51	61	258	171	357	40
4554	45	54	66	75	16	49	58	64	42	59	68	52	61	258	172	363	40
4654	46	54	67	75	18	50	58	66	42	60	68	53	61	258	174	370	40
4754	47	54	69	76	18	51	58	66	42	61	68	54	61	258	175	375	42
4854	48	54	70	76	18	52	58	66	42	62	68	55	61	258	177	383	42
4954	49	54	71	76	18	53	58	66	42	63	68	56	61	289	178	385	42
5054	50	54	72	76	18	54	58	66	42	64	68	57	61	289	180	392	42
5154	51	54	73	76	18	55	58	66	42	65	68	58	61	289	182	399	42
5254	52	54	75	77	18	56	58	66	42	66	68	59	61	289	183	409	42
5354	53	54	76	77	18	57	58	66	42	67	68	60	61	289	185	410	44
5454	54	54	80	80	19	58	58	67	42	68	68	61	61	289	189	421	44

ALL DIMENSIONS ARE IN INCHES UNLESS OTHERWISE NOTED

\*VENT CURB TO ROOF CURB ANCHORS

LEGEND

- A & B are the model size of the vent.
- Table 1 shows the principle dimensions for TEV-HV hurricane vents.
- The maximum vent weight and maximum curb weight are taken from the largest model sizes in each row.
- All dimensions listed, except for E, H, & J, are related to the throat dimensions, A & B.

**PRODUCT REVISED**  
as complying with the Florida  
Building Code  
NOA-No. 24-0729.07  
Expiration Date 08/18/2027  
By   
Miami-Dade Product Control

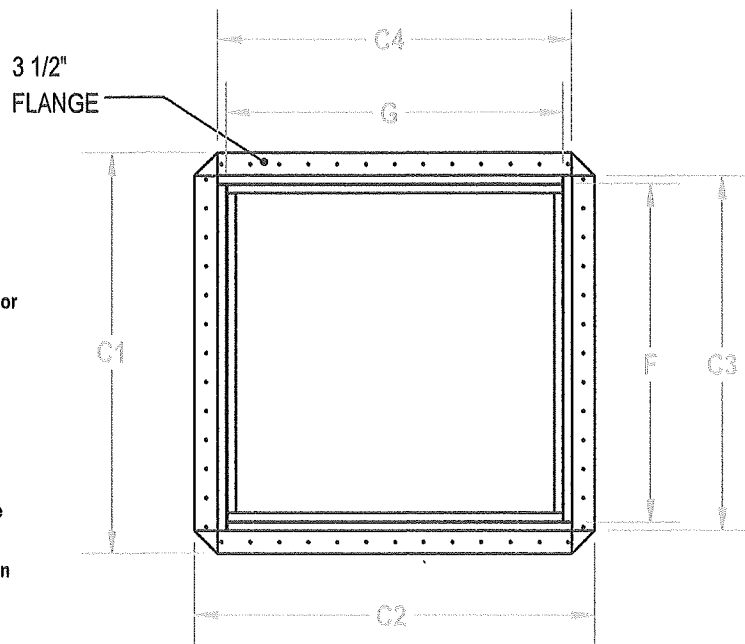
BY CKD. DATE  
RB 6/21/2023

TITLE: TEV HURRICANE VENTS	
Dwg. No. TEV-TIV-HV	REV A
DRAWN BY: NAB	SCALE: NTS
Date: 02/18/2022	SHEET 1 OF 4

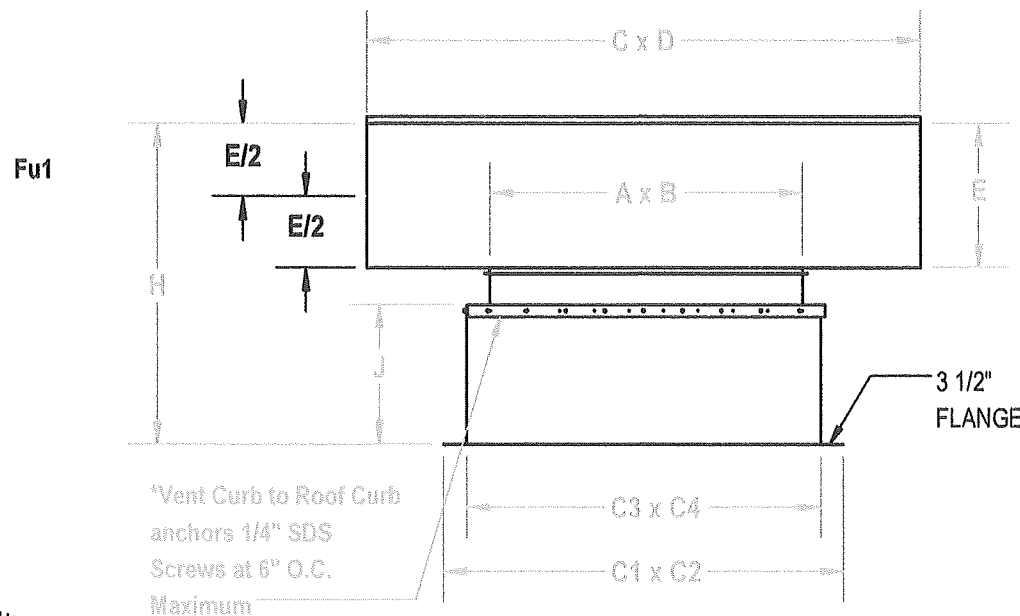
NOTES

- a. Product evaluated in accordance with requirements of 2023 FBC ASCE 7-23.
- b. Roof Structure must be designed to withstand the weight and loading transmitted by the rooftop vent.
- c. This approval is for the structural capacity of the exterior housing only, it does not include any interior mechanism and/or electric part.
- d. The rooftop vent has not been tested for wind driven rain according to Florida Building Code, TAS 100(A). It cannot be installed within the ridge area FBC 1523.6.5.2.13.
- e. All fasteners must be corrosion resistant.
- f. The specimen for Miami-Dade County Performance Test as reported in ATI test report No. A7765.01-801-18 was given a temporary designation "EV-Hooded".
- g. Approved for use in HVHZ
- h. Fu1: Ultimate lateral force per Model TIV, Size 5454

Fu1= 3,000 LBS



PLAN VIEW



ELEVATION VIEW  
Dimensions (Inches)



**ACME MANUFACTURING CORP.**  
6532 TOWER LANE, CLAREMORE, OK 74019  
Phone (918) 266-3097 Fax (918) 266-3091  
ENGINEERED PRODUCTS BY CRAFTSMEN

LET. REVISION RECORD  
A Update to 2023 FBC

BY CKD. DATE  
RB 6/21/24

Large Missile Impact Resistant  
Max Rated design pressure: +53.0 / -112.0 PSF

TABLE 1: TIV-HV Hurricane Vents

Size	A	B	C	D	E	F	G	H	J	C1	C2	C3	C4	Max Vent Weight	Max Curb Weight	Max Fan Weight	*# 1/4" SDS Screws
1254	12	54	29	71	8	16	58	56	42	26	68	19	61	79	122	140	30
1354	13	54	31	72	8	17	58	56	42	27	68	20	61	89	124	145	30
1454	14	54	33	73	9	18	58	57	42	28	68	21	61	89	125	152	30
1554	15	54	35	74	9	19	58	57	42	29	68	22	61	102	127	159	30
1654	16	54	37	75	10	20	58	58	42	30	68	23	61	102	128	165	30
1754	17	54	38	75	10	21	58	58	42	31	68	24	61	115	130	179	32
1854	18	54	40	76	10	22	58	58	42	32	68	25	61	115	131	179	32
1954	19	54	42	77	10	23	58	58	42	33	68	26	61	137	133	201	32
2054	20	54	44	78	12	24	58	60	42	34	68	27	61	137	134	203	32
2154	21	54	46	79	12	25	58	60	42	35	68	28	61	158	136	222	32
2254	22	54	47	79	12	26	58	60	42	36	68	29	61	158	137	224	32
2354	23	54	49	80	12	27	58	60	42	37	68	30	61	180	139	244	34
2454	24	54	51	81	12	28	58	60	42	38	68	31	61	180	140	246	34
2554	25	54	52	81	12	29	58	60	42	39	68	32	61	208	142	252	34
2654	26	54	54	82	12	30	58	60	42	40	68	33	61	208	143	259	34
2754	27	54	56	83	12	31	58	60	42	41	68	34	61	208	145	267	34
2854	28	54	57	83	14	32	58	62	42	42	68	35	61	208	146	267	34
2954	29	54	59	84	14	33	58	62	42	43	68	36	61	208	148	277	36
3054	30	54	60	84	14	34	58	62	42	44	68	37	61	208	149	277	36
3154	31	54	62	85	14	35	58	62	42	45	68	38	61	239	151	281	36
3254	32	54	63	85	14	36	58	62	42	46	68	39	61	239	153	290	36
3354	33	54	65	86	14	37	58	62	42	47	68	40	61	239	154	296	36
3454	34	54	67	87	16	38	58	64	42	48	68	41	61	239	156	303	36
3554	35	54	68	87	16	39	58	64	42	49	68	42	61	239	157	311	38
3654	36	54	70	88	16	40	58	64	42	50	68	43	61	239	159	311	38
3754	37	54	71	88	16	41	58	64	42	51	68	44	61	282	160	319	38
3854	38	54	73	89	16	42	58	64	42	52	68	45	61	282	162	325	38
3954	39	54	74	89	16	43	58	64	42	53	68	46	61	282	163	332	38
4054	40	54	76	90	18	44	58	66	42	54	68	47	61	282	165	334	38
4154	41	54	77	90	18	45	58	66	42	55	68	48	61	282	166	344	40
4254	42	54	79	91	19	46	58	67	42	56	68	49	61	282	168	349	40
4354	43	54	80	91	19	47	58	67	42	57	68	50	61	304	169	356	40
4454	44	54	81	91	20	48	58	68	42	58	68	51	61	304	171	357	40
4554	45	54	83	92	20	49	58	68	42	59	68	52	61	304	172	363	40
4654	46	54	84	92	21	50	58	69	42	60	68	53	61	304	174	370	40
4754	47	54	86	93	21	51	58	69	42	61	68	54	61	304	175	375	42
4854	48	54	87	93	21	52	58	69	42	62	68	55	61	304	177	383	42
4954	49	54	89	94	21	53	58	69	42	63	68	56	61	340	178	385	42
5054	50	54	90	94	22	54	58	70	42	64	68	57	61	340	180	392	42
5154	51	54	91	94	22	55	58	70	42	65	68	58	61	340	182	399	42
5254	52	54	93	95	22	56	58	70	42	66	68	59	61	340	183	409	42
5354	53	54	94	95	22	57	58	70	42	67	68	60	61	340	185	410	44
5454	54	54	96	96	24	58	58	72	42	68	68	61	61	340	189	421	44

ALL DIMENSIONS ARE IN INCHES UNLESS OTHERWISE NOTED

\*VENT CURB TO ROOF CURB ANCHORS

LEGEND

1. A & B are the model size of the vent.
2. Table 1 shows the principle dimensions for TIV-IV hurricane vents.
3. The maximum vent weight and maximum curb weight are taken from the largest model sizes in each row.
4. All dimensions listed, except for E, H, & J, are related to the throat dimensions, A & B.

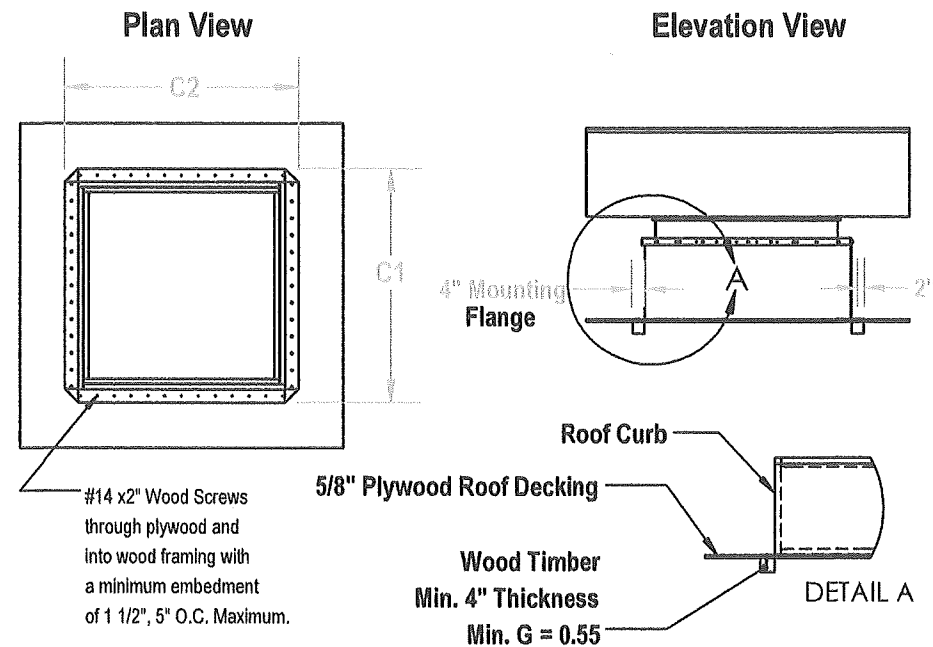
**PRODUCT REVISED**  
as complying with the Florida  
Building Code  
NOA-No. 24-0729.07

Expiration Date 08/18/2027

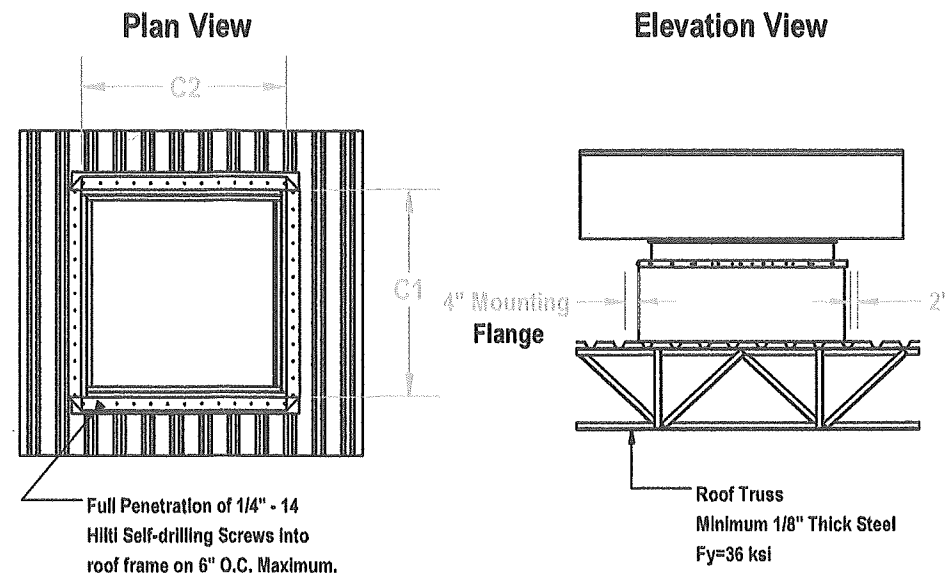
By   
Miami-Dade Product Control

TITLE: TIV HURRICANE VENTS		
Dwg. No.	TEV-TIV-HV	REV A
DRAWN BY:	NAB	SCALE: NTS
Date:	2/18/2022	SHEET 2 OF 4

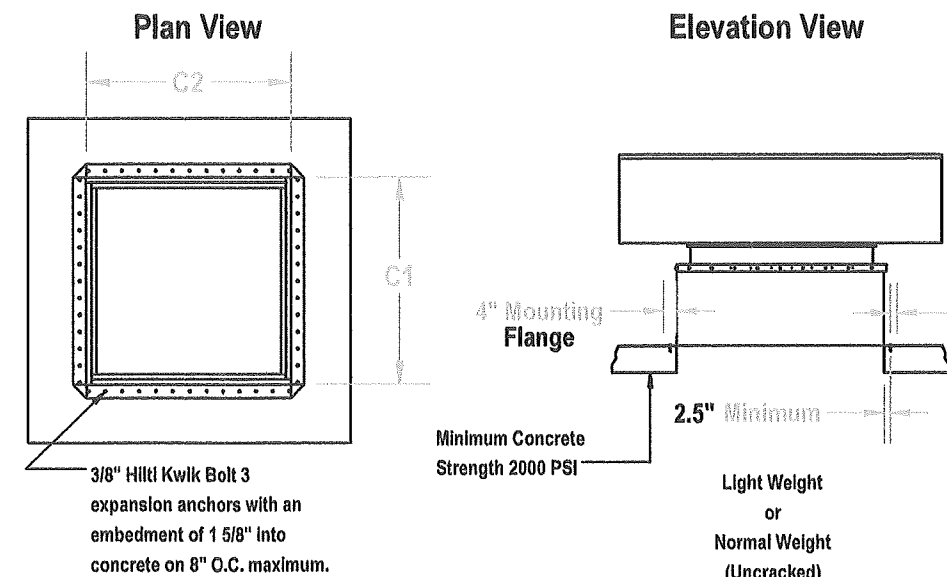
Large Missile Impact Resistant  
Max Rated design pressure: +53.0 / -112.0 PSF



Wood Deck Installation



Metal Building Installation



Concrete Deck Installation

Roof Curb Connection Anchors TIV-HV, TEV-HV					
Installation Type		Wood Deck	Metal Building	Concrete Deck	
Anchor Type		#14 x 2" Wood Screws	1/4" Self Drilling Screws	3/8" Hilti Kwik Bolt	3 or Eqlv.
SIZE	C1	C2	# ANCHORS	# ANCHORS	# ANCHORS
1254	27	69	38	34	24
1354	28	69	40	34	26
1454	29	69	40	34	26
1554	30	69	40	34	26
1654	31	69	40	34	26
1754	32	69	40	34	26
1854	33	69	42	36	26
1954	34	69	42	36	26
2054	35	69	42	36	26
2154	36	69	42	36	28
2254	37	69	42	36	28
2354	38	69	44	36	28
2454	39	69	44	38	28
2554	40	69	44	38	28
2654	41	69	44	38	28
2754	42	69	44	38	28
2854	43	69	46	38	28
2954	44	69	46	38	30
3054	45	69	46	40	30
3154	46	69	46	40	30
3254	47	69	46	40	30
3354	48	69	48	40	30
3454	49	69	48	40	30
3554	50	69	48	40	30
3654	51	69	48	42	30
3754	52	69	48	42	32
3854	53	69	50	42	32
3954	54	69	50	42	32
4054	55	69	50	42	32
4154	56	69	50	42	32
4254	57	69	50	44	32
4354	58	69	52	44	32
4454	59	69	52	44	32
4554	60	69	52	44	34
4654	61	69	52	44	34
4754	62	69	52	44	34
4854	63	69	54	46	34
4954	64	69	54	46	34
5054	65	69	54	46	34
5154	66	69	54	46	34
5254	67	69	54	46	34
5354	68	69	56	46	36
5454	69	69	56	48	36

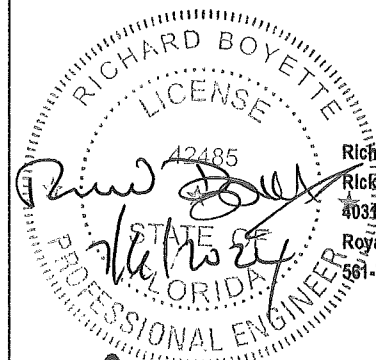
DIMENSIONS ARE IN INCHES UNLESS OTHERWISE SPECIFIED

**PRODUCT REVISED**  
as complying with the Florida  
Building Code

NOA-No. 24-0729.07

Expiration Date 08/18/2027

By *[Signature]*  
Miami-Dade Product Control



Richard Boyette, FL PE #42485  
Rick Boyette Consulting Inc - REG. #9707  
4034 Coconut Blvd  
Royal Palm Beach, FL 33411  
561-790-5766

LET. REVISION RECORD  
A Update to 2023 FBC



BY CKD. DATE  
RB 6/21/2024

TITLE:  
TEV-HV & TIV-HV - INSTALATION

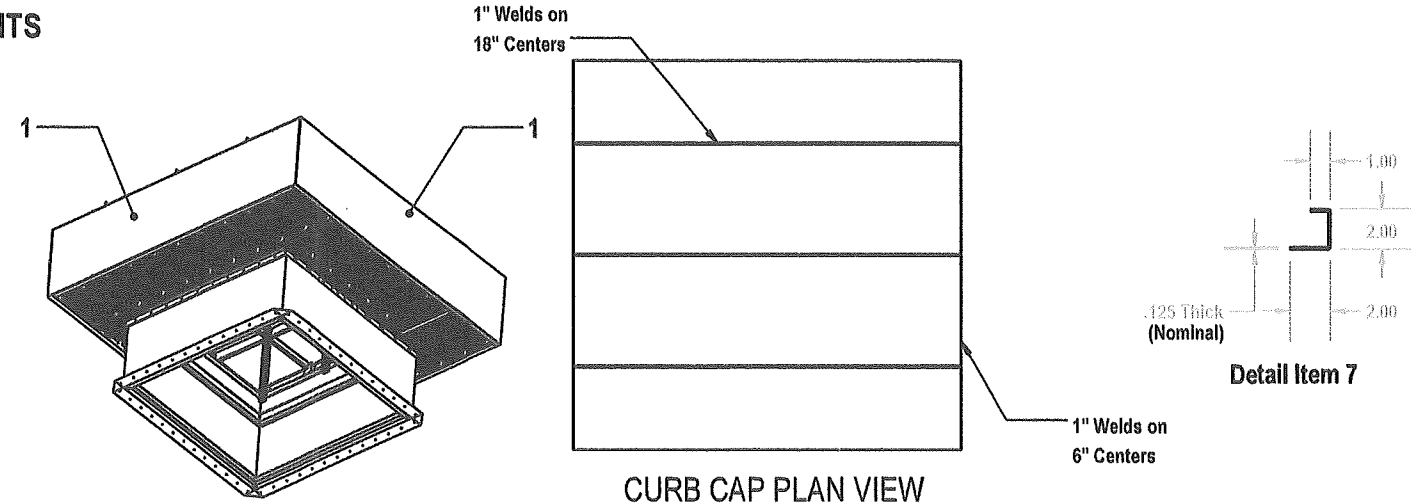
Dwg. No. TEV-TIV-HV  
DRAWN BY: NAB SCALE: NTS  
Date: 02/02/2021

REV  
A

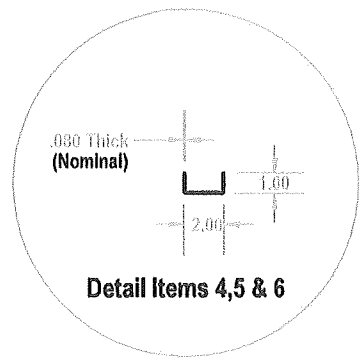
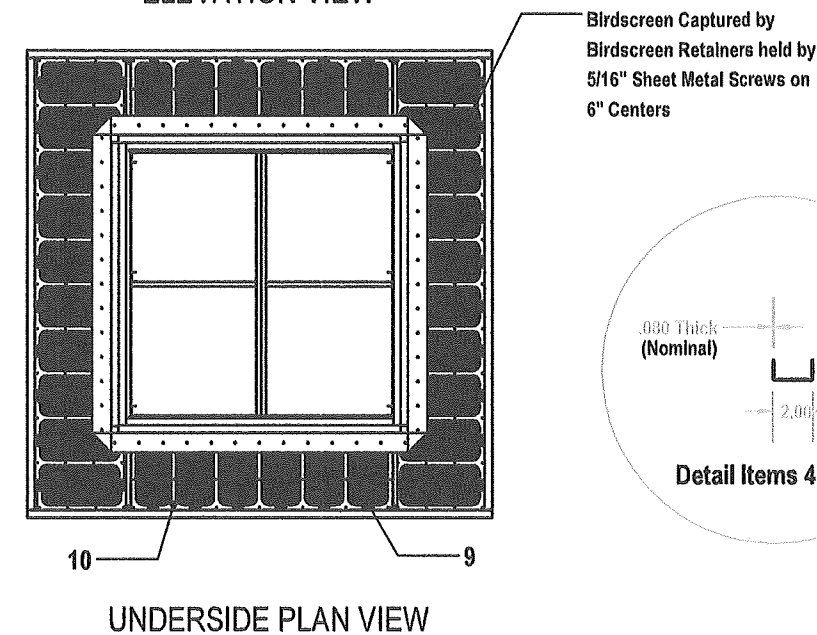
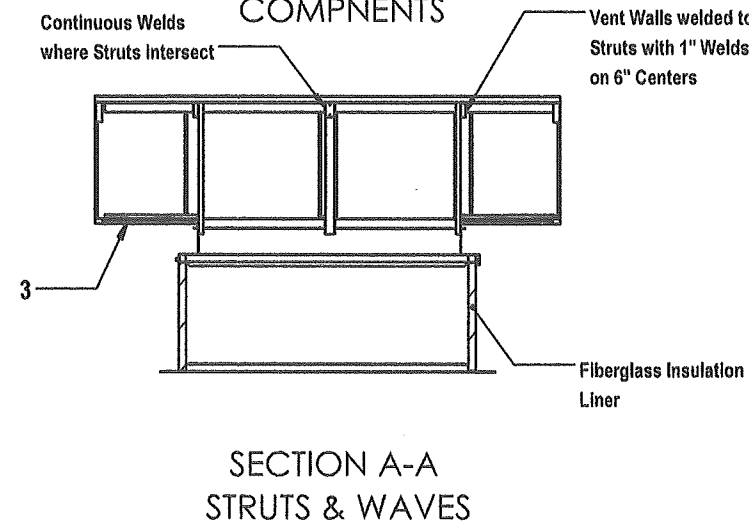
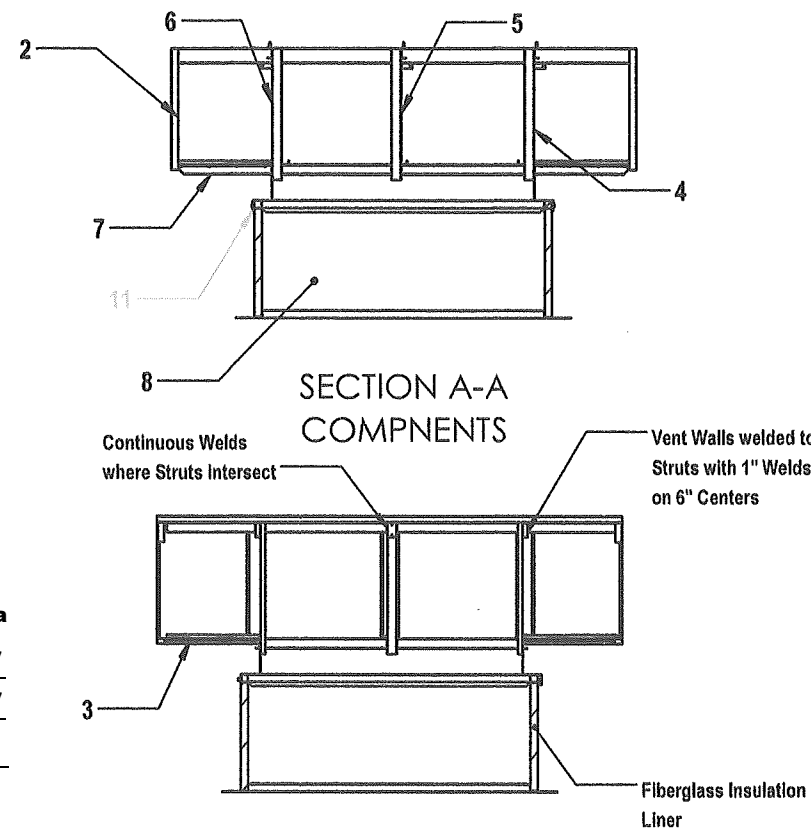
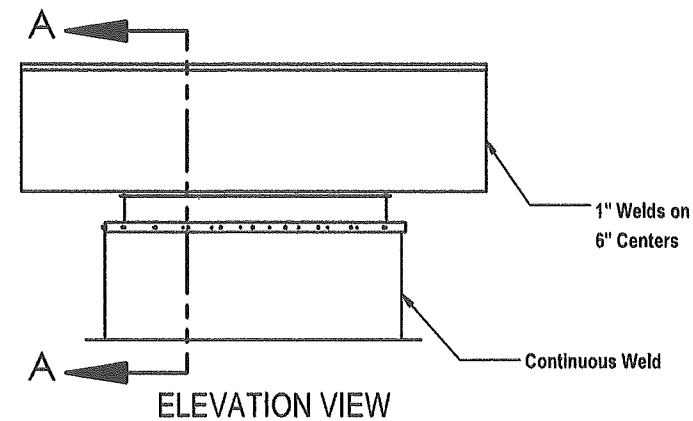
SHEET 3 OF 4

# Large Missile Impact Resistant - TEV-HV & TIV-HV HURRICANE VENTS Max Rated design pressure: +53.0 / -112.0 PSF

Item	Part Description	Material Description
1	Vent Wall	.063 Aluminum 3003-H14
2	End Bracket	.050 Aluminum 3003-H14
3	Intermediate Bracket	.080 Aluminum 3105-H14
4	Hood Strut #1	.080 Aluminum 3105-H14
5	Hood Strut #2	.080 Aluminum 3105-H14
6	Hood Strut #3	.080 Aluminum 3105-H14
7	Hood Strut #4	.080 Aluminum 3105-H14
8	Curb Side Wall	.052 G90 Galvanized Steel
9	Birdscreen	#2 Mesh (.5 Centers) 19 Ga. Galv. W.H.C.
10	Birdscreen Retainer	.052 G90 Galvanized Steel
11	Curb Cap	.080 Aluminum 3003-H14



CURB CAP PLAN VIEW



**PRODUCT REVISED**  
as complying with the Florida Building Code  
NOA-No. 24-0729.07  
Expiration Date 08/18/2027  
By *[Signature]*  
Miami-Dade Product Control

**RICHARD BOYETTE**  
LICENSED PROFESSIONAL ENGINEER  
STATE OF FLORIDA  
Richard Boyette, FL PE #42485  
Rick Boyette Consulting Inc - REG. #9707  
4031 Coconut Blvd  
Royal Palm Beach, FL 33411  
561-790-5766

**ACME MANUFACTURING CORP.**  
8532 TOWER LANE, CLAREMORE, OK 74019  
Phone (918) 266-3097 Fax (918) 266-3091  
ENGINEERED PRODUCTS BY CRAFTSMEN

LET. REVISION RECORD  
A Update to 2023 FBC

BY CKD. DATE  
RB 6/21/2024

TITLE: TEV-HV & TIV-HV FABRICATION DETAILS	
Dwg. No. TEV-TIV-HV	REV A
DRAWN BY: NAB	SCALE: NTS
Date: 02/18/2022	SHEET 4 OF 4