



DEPARTMENT OF REGULATORY AND ECONOMIC RESOURCES (RER)
BOARD AND CODE ADMINISTRATION DIVISION

NOTICE OF ACCEPTANCE (NOA)

MIAMI-DADE COUNTY
PRODUCT CONTROL SECTION
11805 SW 26 Street, Room 208
Miami, Florida 33175-2474
T (786) 315-2590 F (786) 315-2599
www.miamidade.gov/building

Eurotech Industries, Inc.
4201 NE 12th Terrace
Ft. Lauderdale, FL 33334

SCOPE:

This NOA is being issued under the applicable rules and regulations governing the use of construction materials. The documentation submitted has been reviewed and accepted by Miami-Dade County RER-Product Control Section to be used in Miami-Dade County and other areas where allowed by the Authority Having Jurisdiction (AHJ).

This NOA shall not be valid after the expiration date stated below. The Miami-Dade County Product Control Section (In Miami-Dade County) and/ or the AHJ (in areas other than Miami-Dade County) reserve the right to have this product or material tested for quality assurance purposes. If this product or material fails to perform in the accepted manner, the manufacturer will incur the expense of such testing and the AHJ may immediately revoke, modify, or suspend the use of such product or material within their jurisdiction. RER reserves the right to revoke this acceptance if it is determined by Miami-Dade County Product Control Section that this product or material fails to meet the requirements of the applicable building code.

This product is approved as described herein and has been designed to comply with the Florida Building Code, including the High Velocity Hurricane Zone.

DESCRIPTION: Series "PW-800-28" Aluminum Fixed Window - L.M.I.

APPROVAL DOCUMENT: Drawing No. **W24-50D**, titled "Series PW-800-28 Alum. Fixed Window (L.M.I.)", sheets 1 through 5 of 5, dated 08/16/24, prepared by Al-Farooq Corporation, signed and sealed by Jalal Farooq, P.E., bearing the Miami-Dade County Product Control Approval stamp with the Notice of Acceptance number and Approval date by the Miami-Dade County Product Control Section.

MISSILE IMPACT RATING: Large and Small Missile Impact Resistant

LABELING: Each unit shall bear a permanent label with the manufacturer's name or logo, city, state, model/series, and following statement: "Miami-Dade County Product Control Approved", unless otherwise noted herein.

RENEWAL of this NOA shall be considered after a renewal application has been filed and there has been no change in the applicable building code negatively affecting the performance of this product.

TERMINATION of this NOA will occur after the expiration date or if there has been a revision or change in the materials, use, and/ or manufacture of the product or process. Misuse of this NOA as an endorsement of any product, for sales, advertising or any other purposes shall automatically terminate this NOA. Failure to comply with any section of this NOA shall be cause for termination and removal of NOA.

ADVERTISEMENT: The NOA number preceded by the words Miami-Dade County, Florida, and followed by the expiration date may be displayed in advertising literature. If any portion of the NOA is displayed, then it shall be done in its entirety.

INSPECTION: A copy of this entire NOA shall be provided to the user by the manufacturer or its distributors and shall be available for inspection at the job site at the request of the Building Official.

This NOA consists of this page 1 and evidence pages E-1, as well as approval document mentioned above. The submitted documentation was reviewed by **Sifang Zhao, P.E.**

S.Z.

11/07/2024



NOA No. 24-0828.06
Expiration Date: November 07, 2029
Approval Date: November 07, 2024
Page 1

NOTICE OF ACCEPTANCE: EVIDENCE SUBMITTED

A. DRAWINGS

1. Manufacturer's die drawings and sections.
2. Drawing No. W24-50D, titled "Series PW-800-28 Alum. Fixed Window (L.M.I.)", sheets 1 through 5 of 5, dated 08/16/24, prepared by Al-Farooq Corporation, signed and sealed by Jalal Farooq, P.E.

B. TESTS

1. Test reports on: 1) Air Infiltration Test, per FBC, TAS 202-94
2) Uniform Static Air Pressure Test, Loading per FBC, TAS 202-94
3) Water Resistance Test, per FBC, TAS 202-94
4) Large Missile Impact Test (50 fps) per FBC, TAS 201-94
5) Cyclic Wind Pressure Loading per FBC, TAS 203-94

along with marked-up drawings and installation diagram of an aluminum fixed window, prepared by American Test Lab of South Florida, Test Reports No.'s **ATLSF 0626.01-24, Revision #1**, dated 07/09/2024, signed and sealed by Stephen W. Warter, P.E.

C. CALCULATIONS

1. Anchor verification calculations and structural analysis, complying with **FBC 8th Edition (2023)**, dated 08/08/2024, prepared by Al-Farooq Corporation, signed and sealed by Jalal Farooq, P.E.
2. Glazing complies with **ASTM E1300-09, -16**

D. QUALITY ASSURANCE

1. Miami-Dade Department of Regulatory and Economic Resources (RER)

E. MATERIAL CERTIFICATIONS

1. Notice of Acceptance No. 23-0717.30 issued to Kuraray America, Inc. for their "SentryGlas® (Clear and White) Glass Interlayers" dated 08/31/23, expiring on 07/04/28.

F. STATEMENTS

1. Statement letter of conformance, complying with **FBC 8th Edition (2023)** and of no financial interest, dated August 08, 2024, issued by Al-Farooq Corporation, signed and sealed by Jalal Farooq, P.E.

G. OTHERS

1. None.

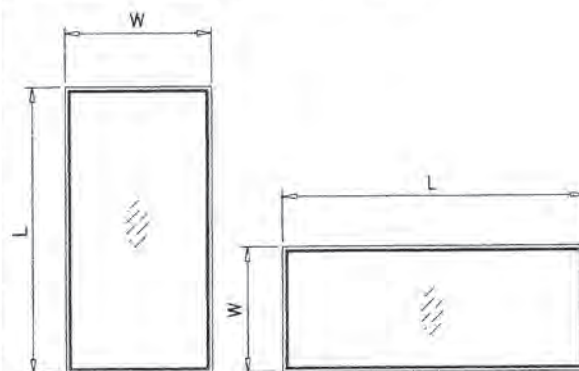


Sifang Zhao, P.E.
Product Control Examiner
NOA No. 24-0828.06

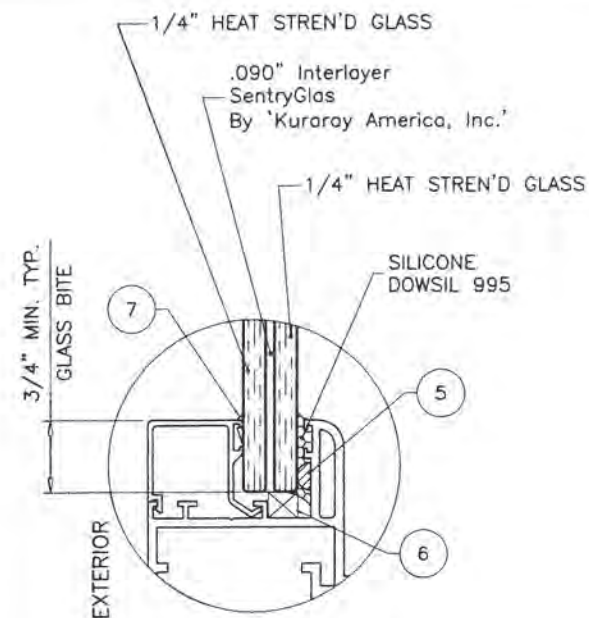
Expiration Date: November 07, 2029
Approval Date: November 07, 2024

DESIGN LOAD CAPACITY - PSF			
WINDOW DIMS.		9/16" LAM. GLASS	
WIDTH	LENGTH	EXT.(+)	INT.(-)
26-1/2"	26"	80.0	130.0
32"		80.0	130.0
37"		80.0	130.0
42"		80.0	130.0
48"		80.0	130.0
53-1/8"		80.0	130.0
26-1/2"	38-3/8"	80.0	130.0
32"		80.0	130.0
37"		80.0	130.0
42"		80.0	130.0
48"		80.0	130.0
53-1/8"		80.0	130.0
26-1/2"	50-5/8"	80.0	130.0
32"		80.0	130.0
37"		80.0	130.0
42"		80.0	130.0
48"		70.0	113.8
53-1/8"		66.4	107.9
26-1/2"	63"	80.0	130.0
32"		80.0	130.0
37"		80.0	130.0
42"		80.0	130.0
48"		70.0	113.8
53-1/8"		63.2	102.8
26-1/2"	74-1/4"	80.0	130.0
32"		80.0	130.0
37"		80.0	130.0
42"		80.0	130.0
48"		70.0	113.8
53-1/8"		63.2	102.8
26-1/2"	78"	80.0	130.0
32"		80.0	130.0
37"		80.0	130.0
42"		80.0	130.0
48"		70.0	113.8
53-1/8"		63.2	102.8
26-1/2"	84"	80.0	130.0
32"		80.0	130.0
37"		80.0	130.0
42"		80.0	130.0
48"		70.0	113.8
53-1/8"		63.2	102.8
26-1/2"	96"	80.0	130.0
32"		80.0	130.0
37"		80.0	130.0
42"		80.0	130.0
48"		70.0	113.8
53-1/8"		63.2	102.8

DESIGN LOAD CAPACITY - PSF			
WINDOW DIMS.		9/16" LAM. GLASS	
WIDTH	LENGTH	EXT.(+)	INT.(-)
36"	60"	80.0	130.0
42"		80.0	130.0
48"		70.0	113.8
54"		62.2	101.1
60"		56.0	91.0
66"		56.0	91.0
36"	72"	80.0	130.0
42"		80.0	130.0
48"		70.0	113.8
54"		62.2	101.1
60"		56.0	91.0
66"		56.0	91.0
36"	84"	80.0	130.0
42"		80.0	130.0
48"		70.0	113.8
54"		62.2	101.1
60"		56.0	91.0
66"		56.0	91.0
36"	96"	80.0	130.0
42"		80.0	130.0
48"		70.0	113.8
54"		62.2	101.1
60"		56.0	91.0
66"		56.0	91.0



NOTE:
WIDTH AND LENGTH DIMENSIONS CAN BE ORIENTED
VERTICALLY OR HORIZONTALLY AS SHOWN ABOVE.



GLAZING DETAIL
9/16" OVERALL LAMINATED GLASS

THESE WINDOWS ARE RATED FOR LARGE & SMALL MISSILE IMPACT.
SHUTTERS ARE NOT REQUIRED.

SERIES PW-800-28 ALUMINUM FIXED WINDOW

DESIGN LOAD RATINGS FOR THESE WINDOWS TO BE AS PER
CHARTS SHOWN AT LEFT.

APPROVAL APPLIES TO SINGLE UNITS OR SIDE BY SIDE COMBINATIONS
OF FIX./FIX. OR FIX. WDW. WITH OTHER MIAMI-DADE COUNTY
APPROVED WINDOWS USING MIAMI-DADE COUNTY APPROVED MULLIONS
IN BETWEEN.
LOWER DESIGN PRESSURE FROM WINDOWS OR MULLION APPROVAL
WILL APPLY TO ENTIRE SYSTEM.

THIS PRODUCT HAS BEEN DESIGNED AND TESTED TO COMPLY WITH THE
REQUIREMENTS OF THE 2023 (8TH EDITION) FLORIDA BUILDING CODE
INCLUDING HIGH VELOCITY HURRICANE ZONE (HVHZ).

1BY OR 2BY WOOD BUCKS & BUCK FASTENERS BY OTHERS, MUST BE
DESIGNED AND INSTALLED ADEQUATELY TO TRANSFER APPLIED PRODUCT
LOADS TO THE BUILDING STRUCTURE.

ANCHORS SHALL BE CORROSION RESISTANT, SPACED AS SHOWN ON DETAILS
AND INSTALLED PER MANUF'S INSTRUCTIONS. SPECIFIED EMBEDMENT TO BASE
MATERIAL SHALL BE BEYOND WALL DRESSING OR STUCCO.

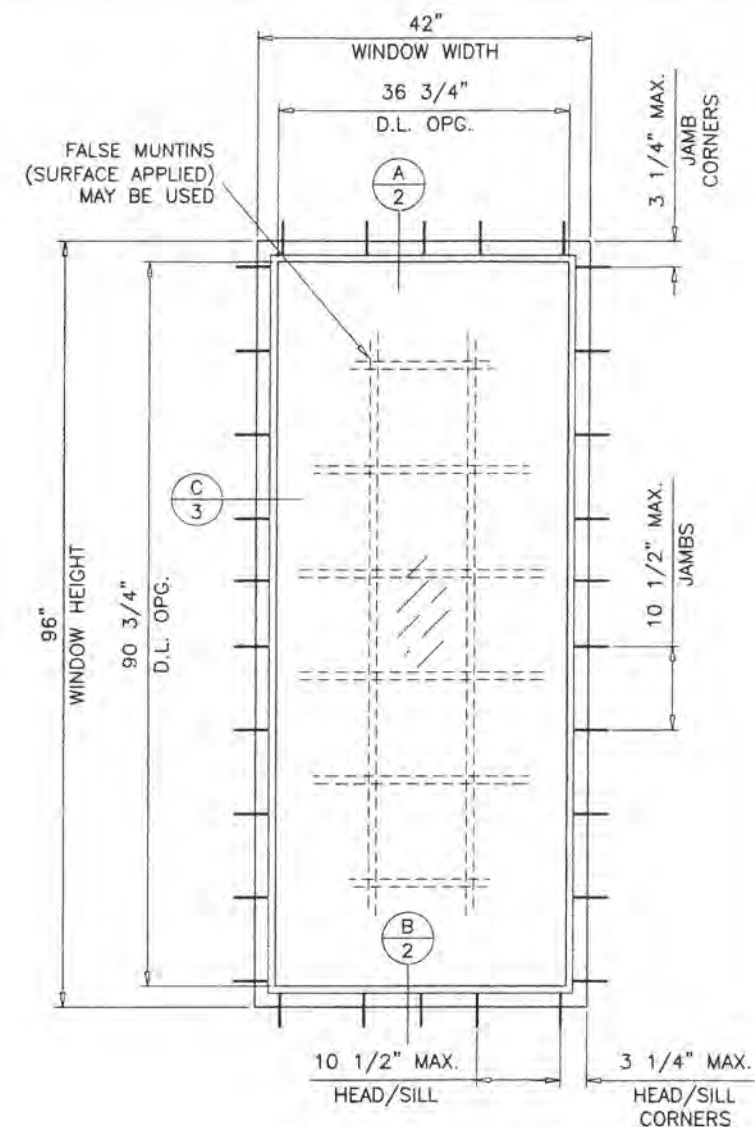
A LOAD DURATION INCREASE IS USED IN DESIGN OF ANCHORS INTO WOOD ONLY.

ALL SHIMS TO BE HIGH IMPACT, NON-METALLIC AND NON-COMPRESSIBLE.

MATERIALS INCLUDING BUT NOT LIMITED TO STEEL/METAL SCREWS, THAT
COME INTO CONTACT WITH OTHER DISSIMILAR MATERIALS SHALL MEET THE
REQUIREMENTS OF THE 2023 FLORIDA BLDG. CODE & ADOPTED STANDARDS.

THIS PRODUCT APPROVAL IS GENERIC AND DOES NOT PROVIDE INFORMATION
FOR A SITE SPECIFIC PROJECT, I.E. LIFE SAFETY OF THIS PRODUCT, ADEQUACY
OF STRUCTURE RECEIVING THIS PRODUCT AND SEALING AROUND OPENING FOR
WATER INFILTRATION RESISTANCE ETC.
CONDITIONS NOT SHOWN IN THIS DRAWING ARE TO BE ANALYZED SEPARATELY,
AND TO BE REVIEWED BY BUILDING OFFICIAL.

DESIGN LOADS SHOWN ARE BASED ON 'ALLOWABLE STRESS DESIGN (ASD)'.



TYPICAL ELEVATION
TESTED UNIT

DAYLITE OPENINGS:
D.L.O. HEIGHT = FRAME HEIGHT - 5.250"
D.L.O. WIDTH = FRAME WIDTH - 5.250"

NOTE:
GLASS CAPACITIES ON THIS SHEET ARE
BASED ON ASTM E1300-09 (3 SEC. GUSTS).

PRODUCT APPROVED
as complying with the Florida
Building Code
NOA-No. 24-0828.06
Approval Date 11/07/2024
By
Miami-Dade Product Control



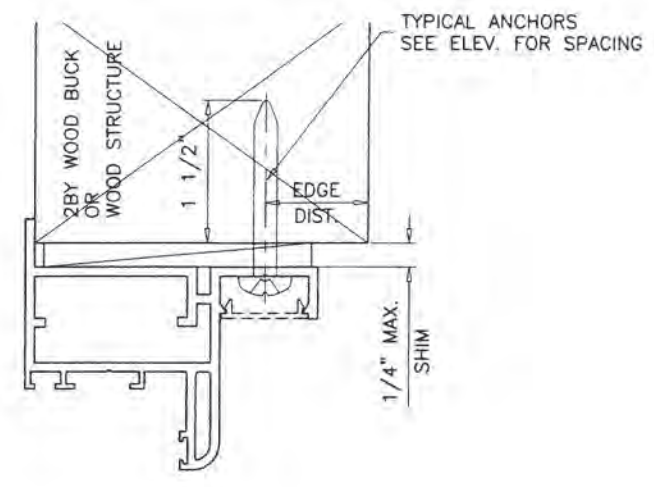
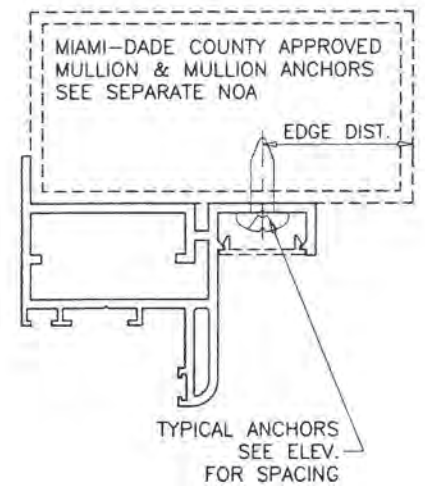
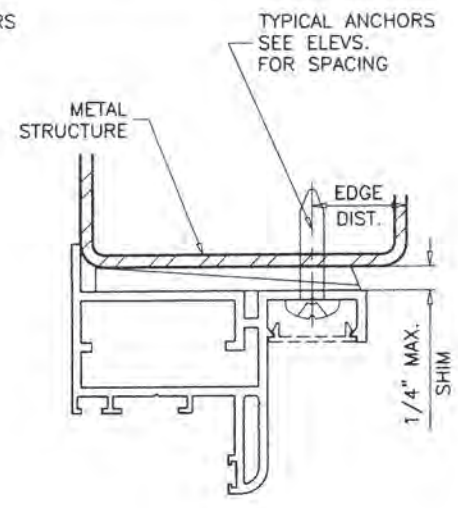
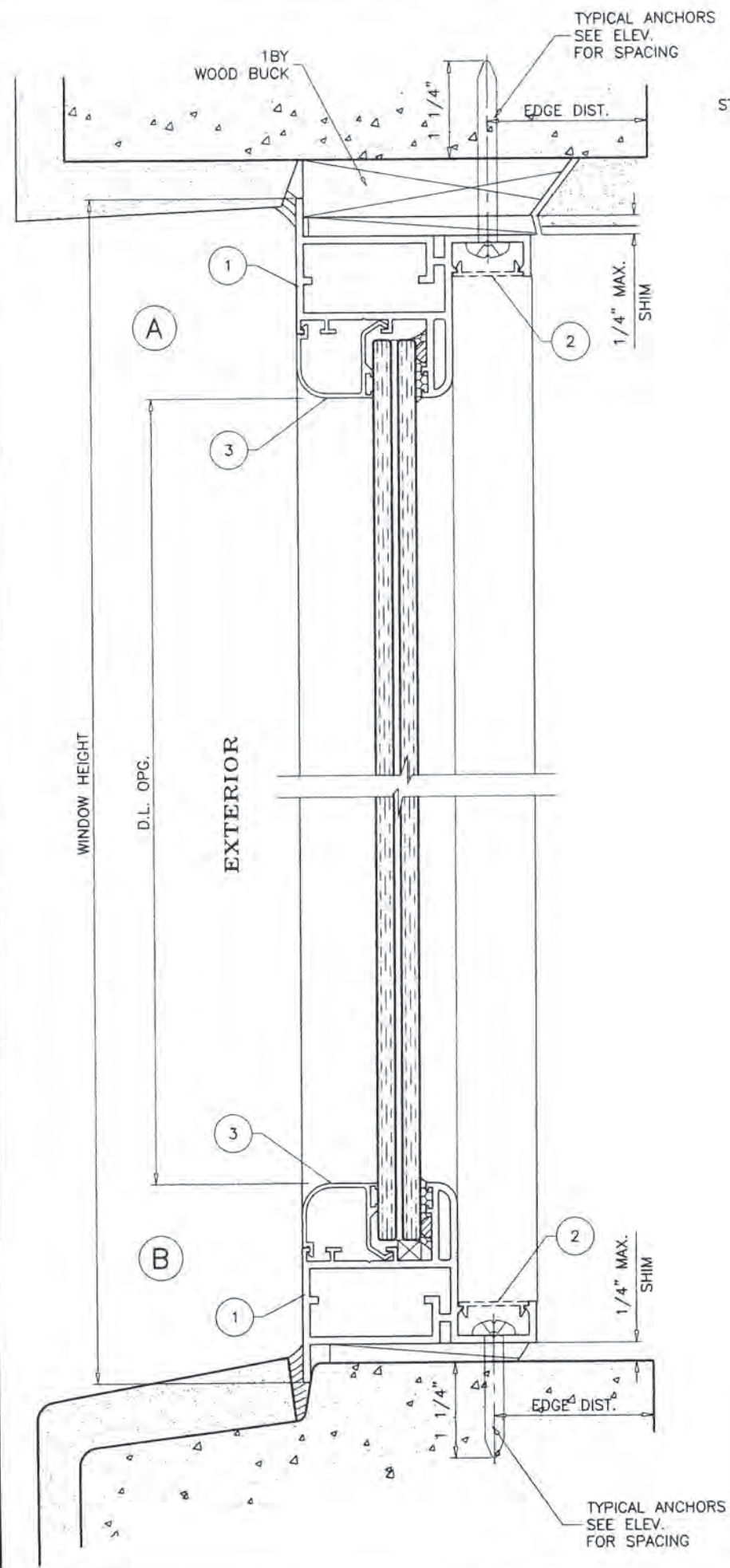
AL-FAROOQ CORPORATION
ENGINEERS & PRODUCT DEVELOPMENT
9360 SUNSET DRIVE, SUITE 220
MIAMI, FLORIDA 33173
TEL. (305) 264-8100
WWW.AFCENG.COM
FBPE #3538

Eurotech Industries Inc.
4201 N.E. 12th Terrace
Oakland Park, Florida 33334
Tel. (954) 630-9967
www.etiwindows.com

revisions:

no	date	by	description

date: 08-16-24
scale: 1/2" = 1'-0"
dr. by: TARIO
chk. by:
drawing no. 24-50D
sheet 1 of 5

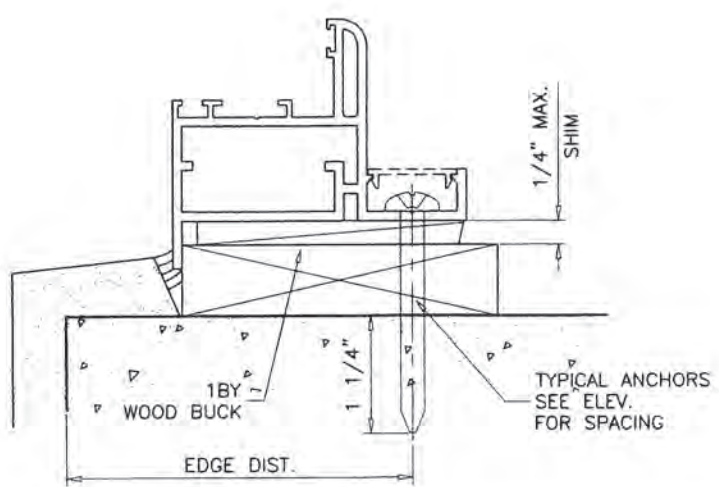


WOOD BUCKS AND METAL STRUCTURE NOT BY 'EUROTECH' MUST SUSTAIN LOADS IMPOSED BY GLAZING SYSTEM AND TRANSFER THEM TO THE BUILDING STRUCTURE.

TYPICAL ANCHORS: SEE ELEV. FOR SPACING
1/4" DIA. ULTRACON+ BY 'DEWALT' (Fu=164 KSI, Fy=148 KSI)
 INTO 2BY WOOD BUCKS OR WOOD STRUCTURES
 1-1/2" MIN. PENETRATION INTO WOOD (HEAD/SILL/JAMBS)
 THRU 1BY BUCKS INTO CONC. OR BLOCKS
 1-1/4" MIN. EMBED INTO CONCRETE (HEAD/SILL/JAMBS)
 1-1/4" MIN. EMBED INTO BLOCKS (JAMBS)
 DIRECTLY INTO CONCRETE OR BLOCKS
 1-1/4" MIN. EMBED INTO CONCRETE (HEAD/SILL/JAMBS)
 1-1/4" MIN. EMBED INTO BLOCKS (JAMBS)

#14 SMS OR SELF DRILLING SCREWS (GRADE 2 CRS)
 INTO MIAMI-DADE COUNTY APPROVED MULLIONS
 OR
 INTO METAL STRUCTURES (HEAD/SILL/JAMBS)
 (3) THREADS MIN. TO EXTEND BEYOND METAL THICKNESS
 ALUMINUM: 1/8" THK. MIN. (6063-T5 MIN.)
 STEEL: 1/8" THK. MIN. (Fy = 36 KSI MIN.)
 (STEEL IN CONTACT WITH ALUMINUM TO BE PLATED OR PAINTED)

TYPICAL EDGE DISTANCE
 INTO CONCRETE AND BLOCKS = 2-1/2" MIN.
 INTO WOOD STRUCTURE = 1" MIN.
 INTO METAL STRUCTURE = 3/4" MIN.
 WOOD AT HEAD, SILL OR JAMBS SG = 0.55 MIN.
 CONCRETE AT HEAD, SILL OR JAMBS f'c = 3000 PSI MIN.
 C-90 HOLLOW/FILLED BLOCK AT JAMBS f'm = 2000 PSI MIN.



PRODUCT APPROVED
 as complying with the Florida
 Building Code
 NOA-No. 24-0828.06
 Approval Date 11/07/2024
 By *[Signature]*
 Miami-Dade Product Control



AL-FAROOQ CORPORATION
 ENGINEERS & PRODUCT DEVELOPMENT
 9360 SUNSET DRIVE, SUITE 220
 MIAMI, FLORIDA 33173
 TEL. (305) 264-8100
 FBPE #3538

COMP-ANL\24-50D-EWD

SERIES PW-800-28 ALUM FIXED WINDOW (L.M.I.)

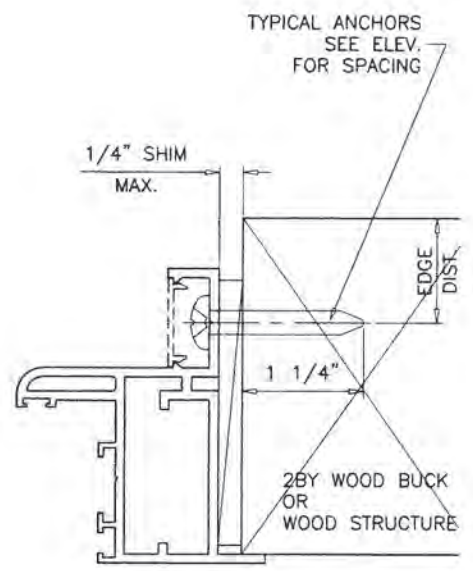
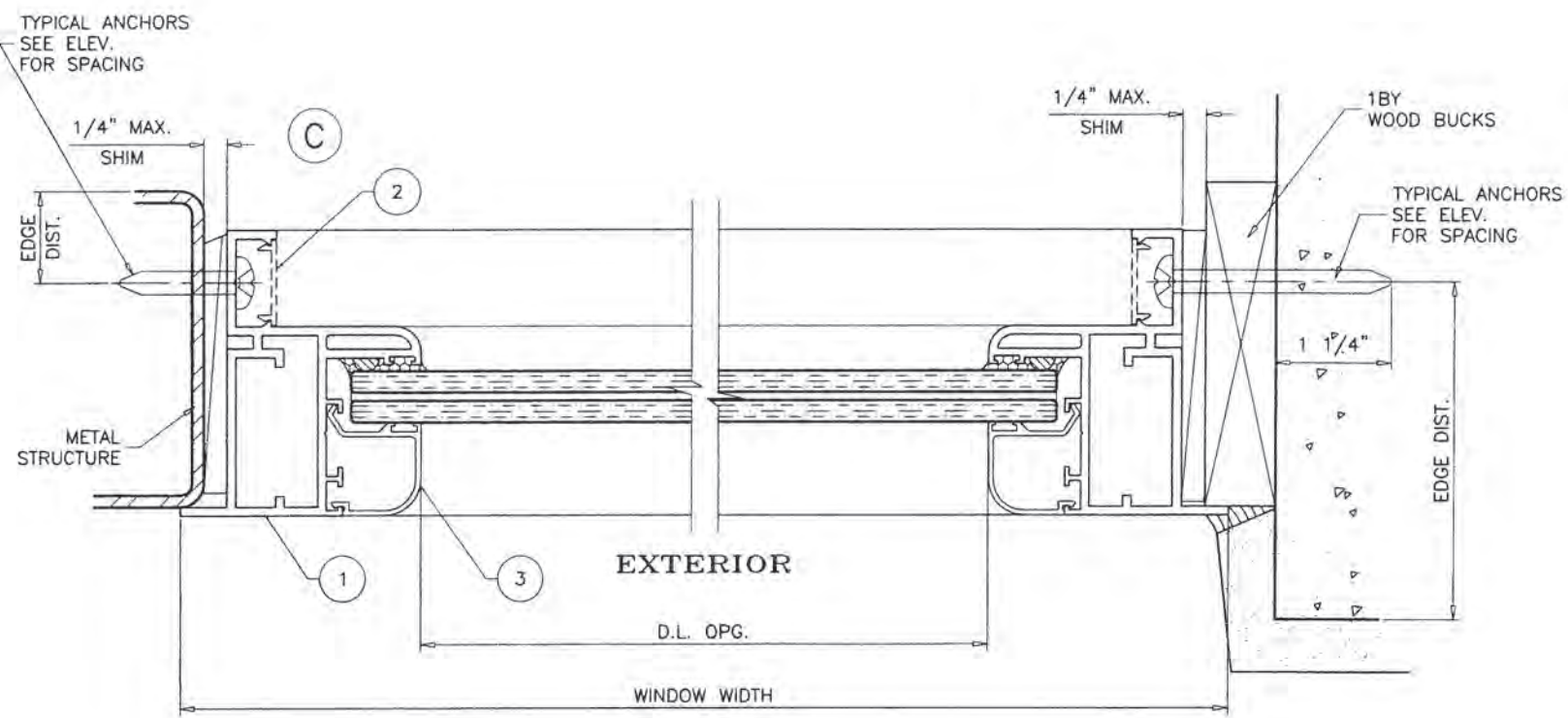
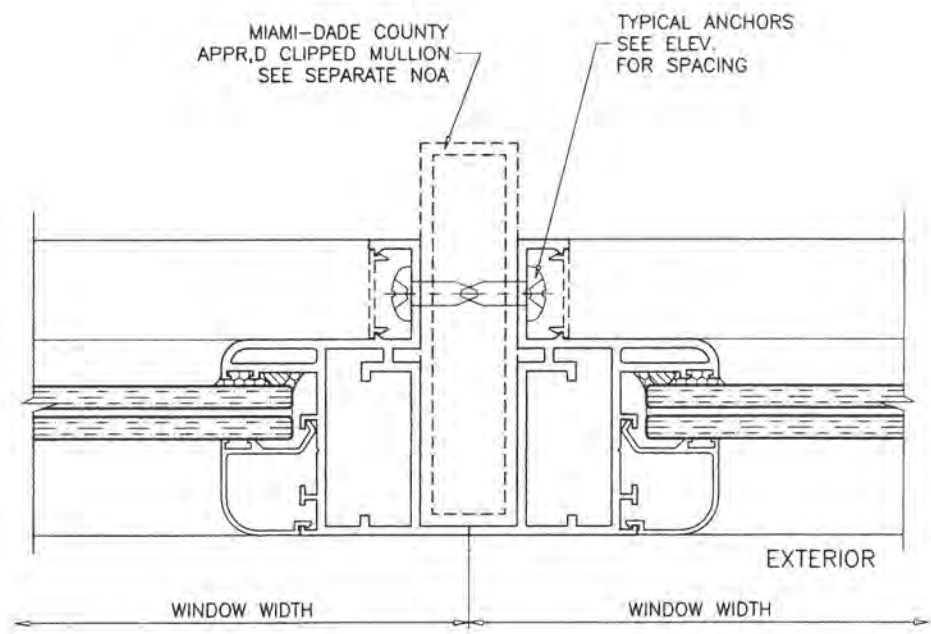
Eurotech Industries Inc.
 4201 N.E. 12th Terrace
 Oakland Park, Florida 33334
 Tel. (954) 630-9967
 www.etiwindows.com

revisions:

no	date	by	description

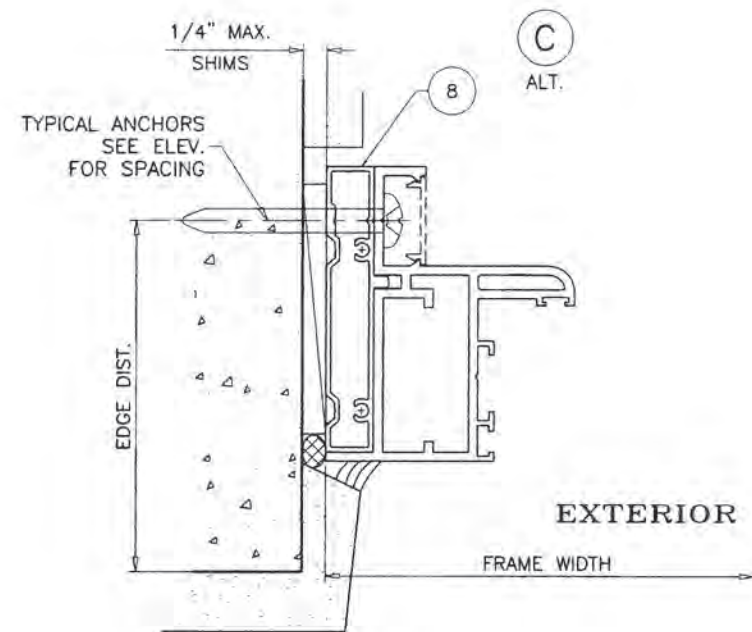
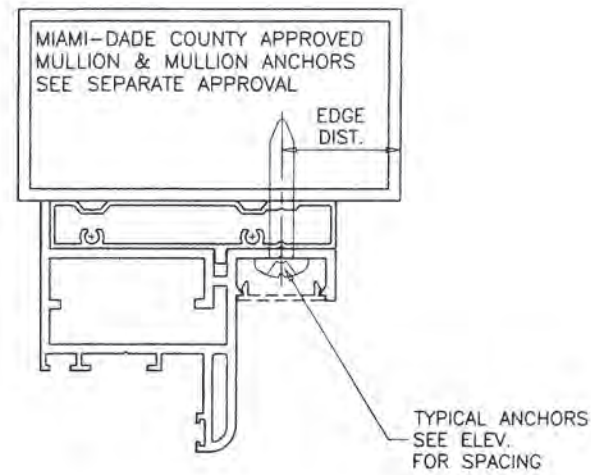
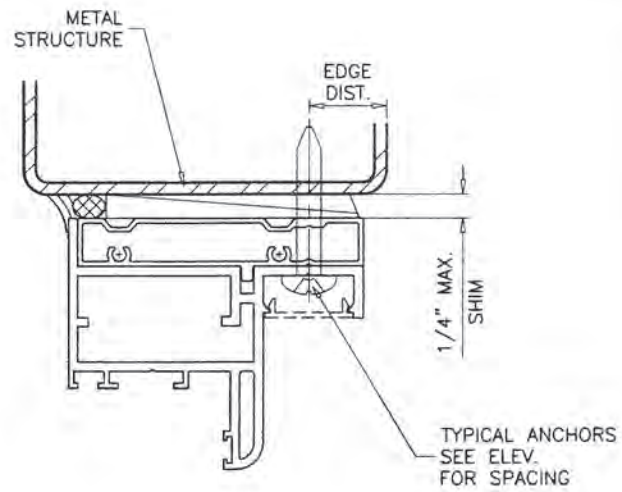
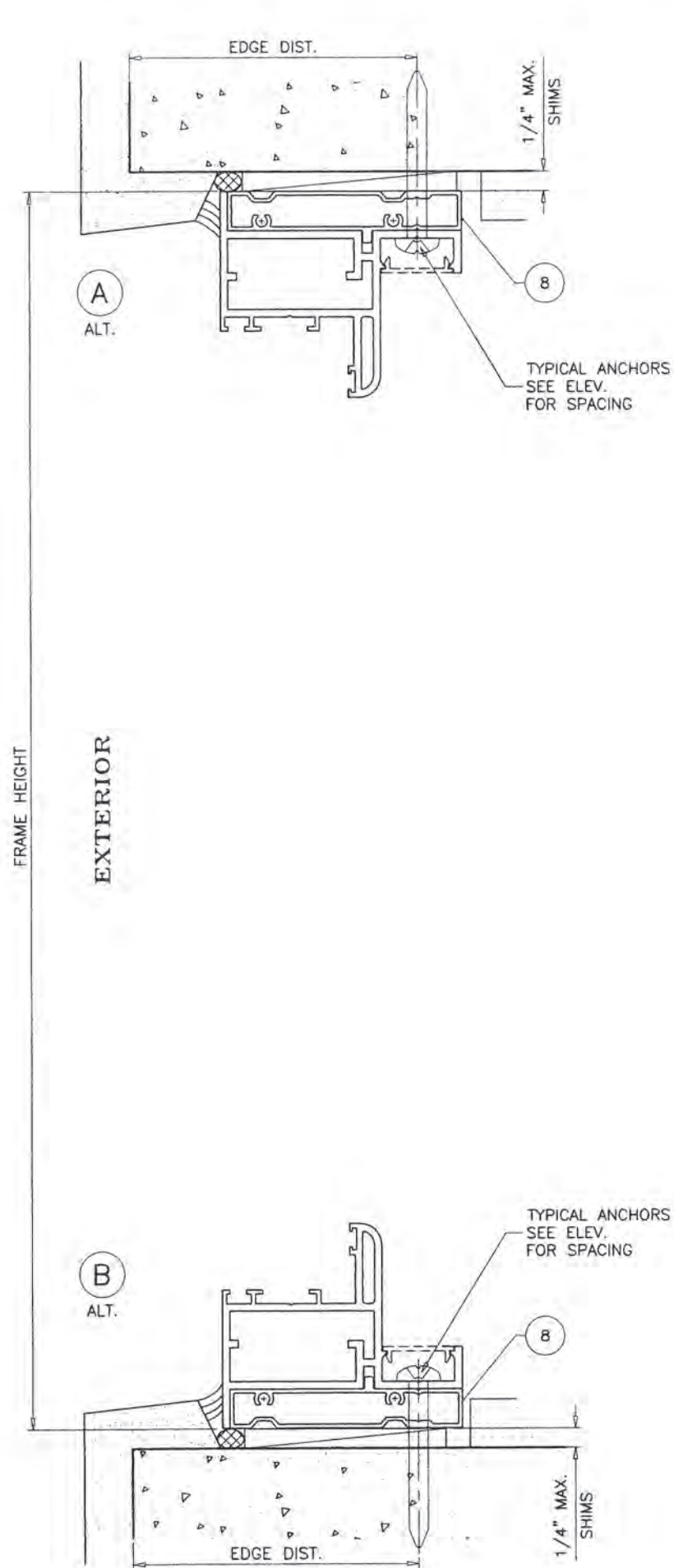
date: 08-16-24
 scale: 1/2" = 1"
 dr. by: TARIQ
 chk. by:
 drawing no. 24-50D
 sheet 2 of 5

revisions:		date		by description	
no	date	no	date	no	date



PRODUCT APPROVED
 as complying with the Florida
 Building Code
 NOA-No. 24-0828.06
 Approval Date 11/07/2024
 By *[Signature]*
 Miami-Dade Product Control





FLANGE FRAMES WITH FLUSH FRAME ADAPTERS
SEE SHEETS 2 & 3 FOR WINDOW DETAILS

PRODUCT APPROVED
as complying with the Florida
Building Code
NOA-No. 24-0828.06
Approval Date 11/07/2024
By 
Miami-Dade Product Control



AL-FAROOQ CORPORATION
ENGINEERS & PRODUCT DEVELOPMENT
9360 SUNSET DRIVE, SUITE 220
MIAMI, FLORIDA 33173
TEL. (305) 264-8100
FBPE #3538

COMP-ANL 24-50D-EWD

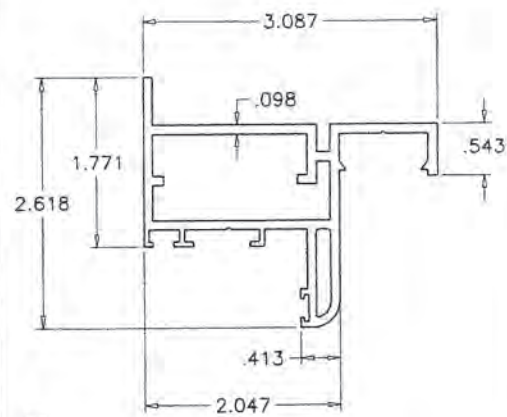
SERIES PW-800-28 ALUM FIXED WINDOW (L.M.I.)

Eurotech Industries Inc.
4201 N.E. 12th Terrace
Oakland Park, Florida 33334
Tel. (954) 630-9967
www.etiwindows.com

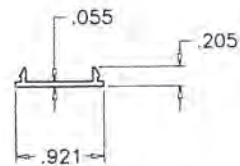
www.afceng.com

revisions:	
no	date by description

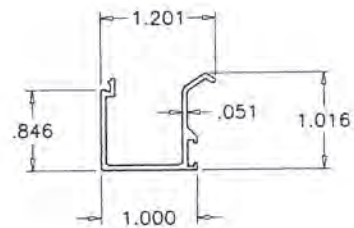
date: 08-16-24	scale: 1/2" = 1"	dr. by: TARIQ	chk. by:	drawing no.
				24-50D
				sheet 4 of 5



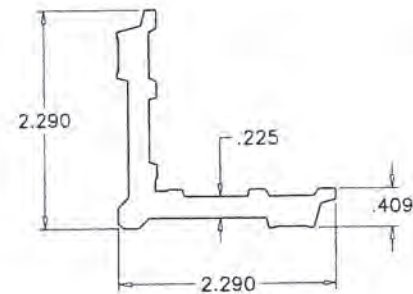
① FLANGE FRAME



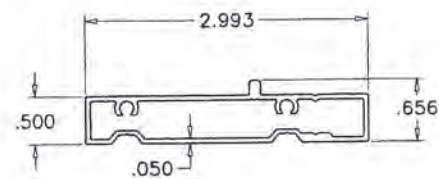
② FRAME COVER (OPTIONAL)



③ GLAZING BEAD



④ CORNER KEY

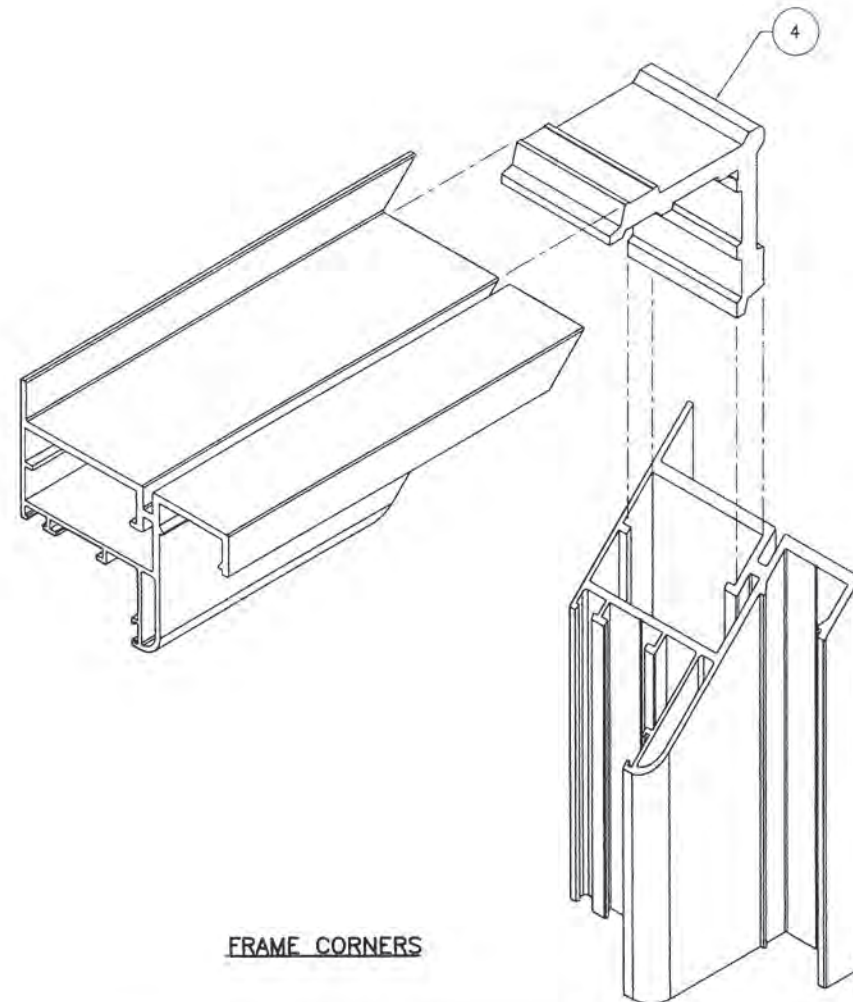


⑧ FLUSH FRAME ADAPTER

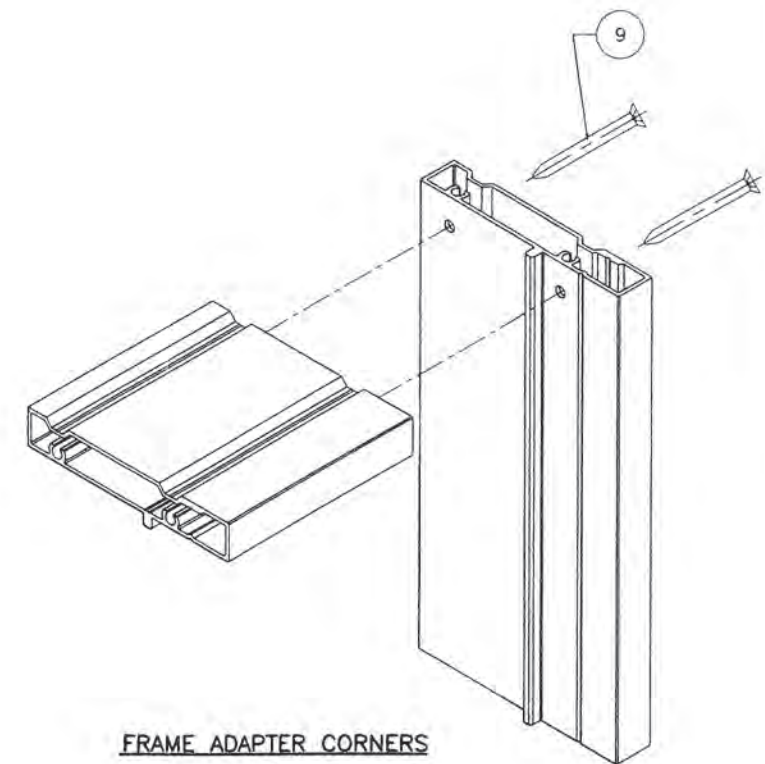
ITEM	PART #	QUANTITY	DESCRIPTION	MATERIAL	MANF./SUPPLIER/REMARKS
1	PW020	4	FLANGE FRAME	6063-T6	-
2	HW 013	4	FRAME COVER (OPTIONAL)	6063-T6	-
3	VZ1535A	4	GLAZING BEAD	6063-T6	-
4	ER014	4	CORNER KEY	6063-T5	-
5	-	AS REQD.	BUMP ON SPACER	SILICONE	-
6	-	2/ LITE	SETTING BLOCKS AT 1/4 POINTS (1/4" X 1/4" X 2" LONG)	EPDM	DUROMETER 80±5 SHORE A
7	-	-	GLAZING GASKET	EPDM	DUROMETER 75±5 SHORE A
8	7274	4	FLUSH FRAME ADAPTER	6063-T6	-
9	#8 X 1-1/4"	2/ CORNER	FRAME ADAPTER ASSEMBLY FASTENERS	ST. STEEL	FH SMS

SEALANTS:

ALL JOINTS AND FRAME CONNECTIONS SEALED WITH GE SCS2800 SILGLAZE II SEALANT.



FRAME CORNERS



FRAME ADAPTER CORNERS

PRODUCT APPROVED
as complying with the Florida
Building Code
NOA-No. 24-0828.06
Approval Date 11/07/2024
By 
Miami-Dade Product Control



AL-FAROOQ CORPORATION
ENGINEERS & PRODUCT DEVELOPMENT
9360 SUNSET DRIVE, SUITE 220
MIAMI, FLORIDA 33173
TEL. (305) 264-8100
FBPE #9538

COMP-ANL \ 24-50D-EWD

SERIES PW-800-28 ALUM FIXED WINDOW (L.M.I.)

Eurotech Industries Inc.
4201 N.E. 12th Terrace
Oakland Park, Florida 33334
Tel. (954) 630-9967
www.etiwindows.com

revisions:

no	date	by	description

date: 08-16-24
scale: 1/2" = 1"
dr. by: TARIQ
chk. by:

drawing no.
24-50D

sheet 5 of 5