



DEPARTMENT OF REGULATORY AND ECONOMIC RESOURCES (RER)
BOARD AND CODE ADMINISTRATION DIVISION

NOTICE OF ACCEPTANCE (NOA)

MIAMI-DADE COUNTY
PRODUCT CONTROL SECTION
11805 SW 26 Street, Room 208
Miami, Florida 33175-2474
T (786) 315-2590 F (786) 315-2599
www.miamidade.gov/building

Eurotech Industries, Inc.
4201 NE 12th Terrace
Ft. Lauderdale, FL 33334

SCOPE:

This NOA is being issued under the applicable rules and regulations governing the use of construction materials. The documentation submitted has been reviewed and accepted by Miami-Dade County RER-Product Control Section to be used in Miami-Dade County and other areas where allowed by the Authority Having Jurisdiction (AHJ).

This NOA shall not be valid after the expiration date stated below. The Miami-Dade County Product Control Section (In Miami-Dade County) and/ or the AHJ (in areas other than Miami-Dade County) reserve the right to have this product or material tested for quality assurance purposes. If this product or material fails to perform in the accepted manner, the manufacturer will incur the expense of such testing and the AHJ may immediately revoke, modify, or suspend the use of such product or material within their jurisdiction. RER reserves the right to revoke this acceptance if it is determined by Miami-Dade County Product Control Section that this product or material fails to meet the requirements of the applicable building code.

This product is approved as described herein and has been designed to comply with the Florida Building Code, including the High Velocity Hurricane Zone.

DESCRIPTION: Series "PW-800-50" Aluminum Fixed Window - L.M.I.

APPROVAL DOCUMENT: Drawing No. **W24-45D**, titled "Series PW-800-50 Alum. Fixed Window (L.M.I.)", sheets 1 through 6 of 6, dated 07/26/24, prepared by Al-Farooq Corporation, signed and sealed by Jalal Farooq, P.E., bearing the Miami-Dade County Product Control Approval stamp with the Notice of Acceptance number and Approval date by the Miami-Dade County Product Control Section.

MISSILE IMPACT RATING: Large and Small Missile Impact Resistant

LABELING: Each unit shall bear a permanent label with the manufacturer's name or logo, city, state, model/series, and following statement: "Miami-Dade County Product Control Approved", unless otherwise noted herein.

RENEWAL of this NOA shall be considered after a renewal application has been filed and there has been no change in the applicable building code negatively affecting the performance of this product.

TERMINATION of this NOA will occur after the expiration date or if there has been a revision or change in the materials, use, and/ or manufacture of the product or process. Misuse of this NOA as an endorsement of any product, for sales, advertising or any other purposes shall automatically terminate this NOA. Failure to comply with any section of this NOA shall be cause for termination and removal of NOA.

ADVERTISEMENT: The NOA number preceded by the words Miami-Dade County, Florida, and followed by the expiration date may be displayed in advertising literature. If any portion of the NOA is displayed, then it shall be done in its entirety.

INSPECTION: A copy of this entire NOA shall be provided to the user by the manufacturer or its distributors and shall be available for inspection at the job site at the request of the Building Official.

This NOA consists of this page 1 and evidence pages E-1, as well as approval document mentioned above. The submitted documentation was reviewed by **Sifang Zhao, P.E.**

S.Z.



11/07/2024

NOA No. 24-0828.07
Expiration Date: November 07, 2029
Approval Date: November 07, 2024
Page 1

NOTICE OF ACCEPTANCE: EVIDENCE SUBMITTED

A. DRAWINGS

1. Manufacturer's die drawings and sections.
2. Drawing No. **W24-45D**, titled "Series PW-800-50 Alum. Fixed Window (L.M.I.)", sheets 1 through 6 of 6, dated 07/26/24, prepared by Al-Farooq Corporation, signed and sealed by Jalal Farooq, P.E.

B. TESTS

1. Test reports on: 1) Air Infiltration Test, per FBC, TAS 202-94
2) Uniform Static Air Pressure Test, Loading per FBC, TAS 202-94
3) Water Resistance Test, per FBC, TAS 202-94
4) Large Missile Impact Test (50 fps) per FBC, TAS 201-94
5) Cyclic Wind Pressure Loading per FBC, TAS 203-94

along with marked-up drawings and installation diagram of an aluminum fixed window, prepared by American Test Lab of South Florida, Test Reports No.'s **ATLSF 0626.02-24, Revision #1**, dated 07/17/2024, signed and sealed by Stephen W. Warter, P.E.

C. CALCULATIONS

1. Anchor verification calculations and structural analysis, complying with **FBC 8th Edition (2023)**, dated 08/09/2024, prepared by Al-Farooq Corporation, signed and sealed by Jalal Farooq, P.E.
2. Glazing complies with **ASTM E1300-09, -16**

D. QUALITY ASSURANCE

1. Miami-Dade Department of Regulatory and Economic Resources (RER)

E. MATERIAL CERTIFICATIONS

1. Notice of Acceptance No. **24-0205.08** issued to **Kuraray America, Inc.** for their "**Trosifol® Ultraclear, Clear and Color PVB Glass Interlayers**" dated 03/21/2024, expiring on 07/08/2029.
2. Notice of Acceptance No. **24-0205.08** issued to **Kuraray America, Inc.** for their "**Trosifol® Extra Stiff (ES) PVB Glass Interlayers**" dated 08/31/2023, expiring on 02/08/2028.

F. STATEMENTS

1. Statement letter of conformance, complying with **FBC 8th Edition (2023)** and of no financial interest, dated August 09, 2024, issued by Al-Farooq Corporation, signed and sealed by Jalal Farooq, P.E.

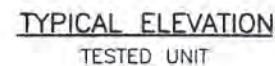
G. OTHERS

1. None.



Sifang Zhao, P.E.
Product Control Examiner
NOA No. 24-0828.07

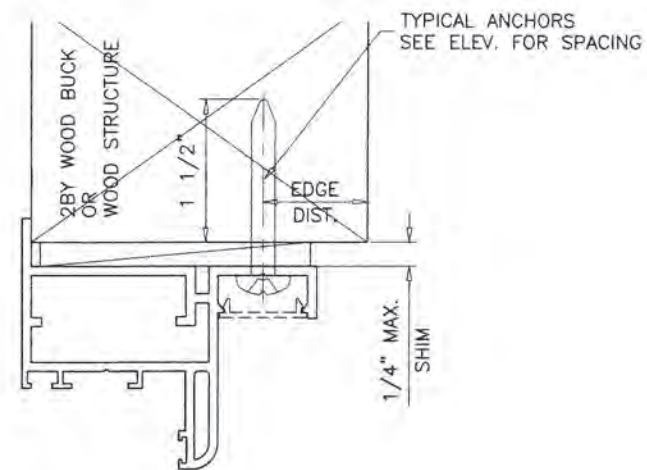
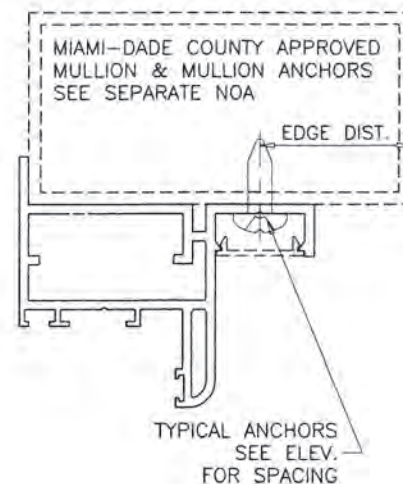
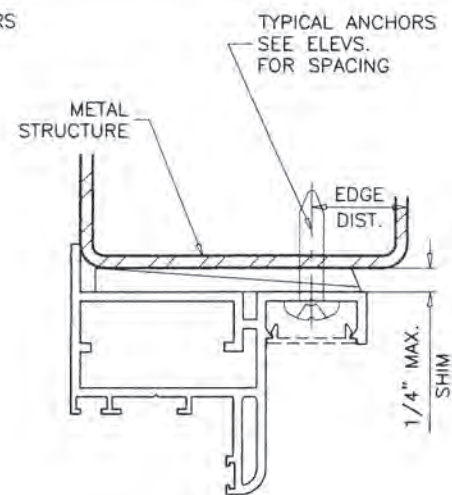
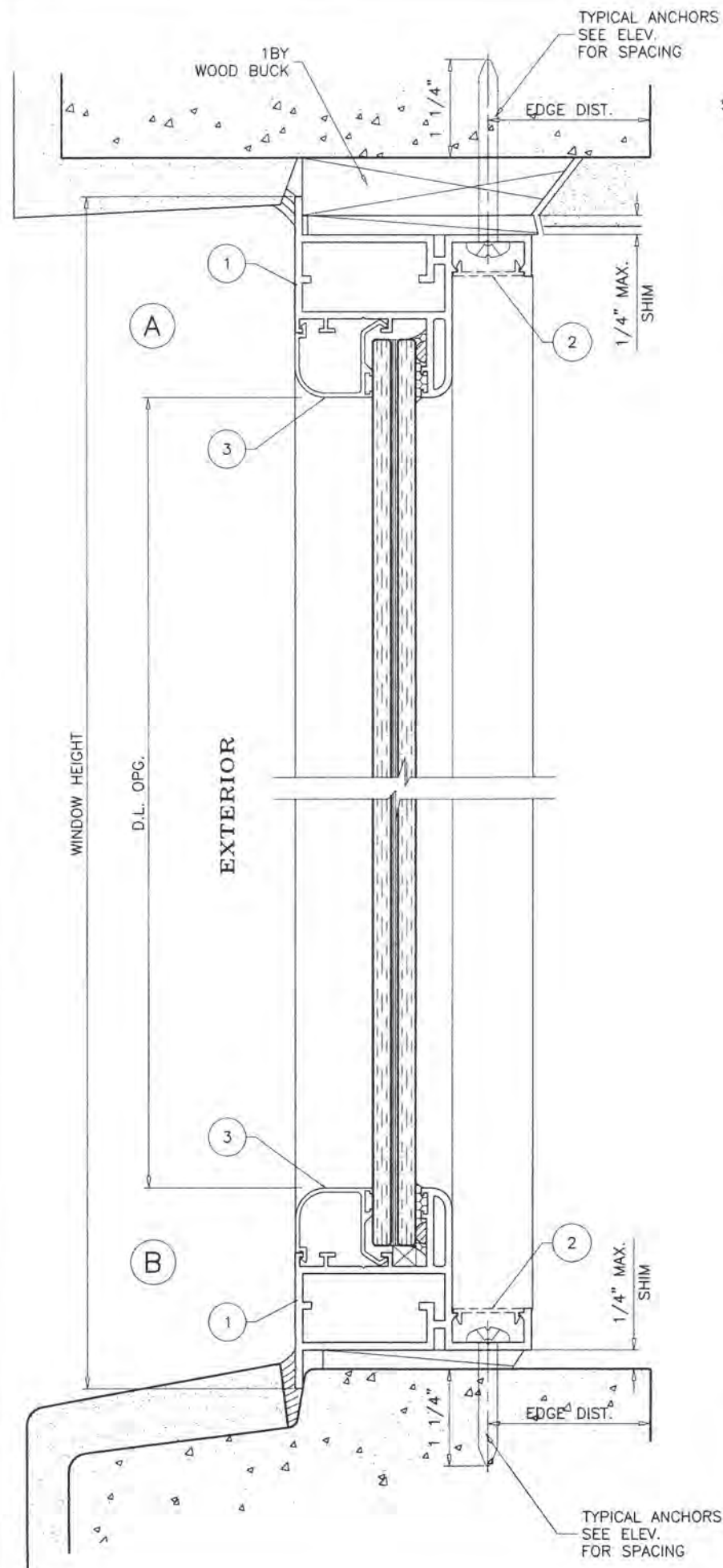
Expiration Date: November 07, 2029
Approval Date: November 07, 2024



THESE WINDOWS ARE RATED FOR LARGE & SMALL MISSILE IMPACT.
SHUTTERS ARE NOT REQUIRED.



sheet 1 of 6



WOOD BUCKS AND METAL STRUCTURE NOT BY 'EUROTECH' MUST SUSTAIN LOADS IMPOSED BY GLAZING SYSTEM AND TRANSFER THEM TO THE BUILDING STRUCTURE.

TYPICAL ANCHORS: SEE ELEV. FOR SPACING

1/4" DIA. ULTRACON+ BY 'DEWALT' ($F_u=164$ KSI, $F_y=148$ KSI)
 INTO 2BY WOOD BUCKS OR WOOD STRUCTURES
 1-1/2" MIN. PENETRATION INTO WOOD (HEAD/SILL/JAMBS)
 THRU 1BY BUCKS INTO CONC. OR BLOCKS
 1-1/4" MIN. EMBED INTO CONCRETE (HEAD/SILL/JAMBS)
 1-1/4" MIN. EMBED INTO BLOCKS (JAMBS)

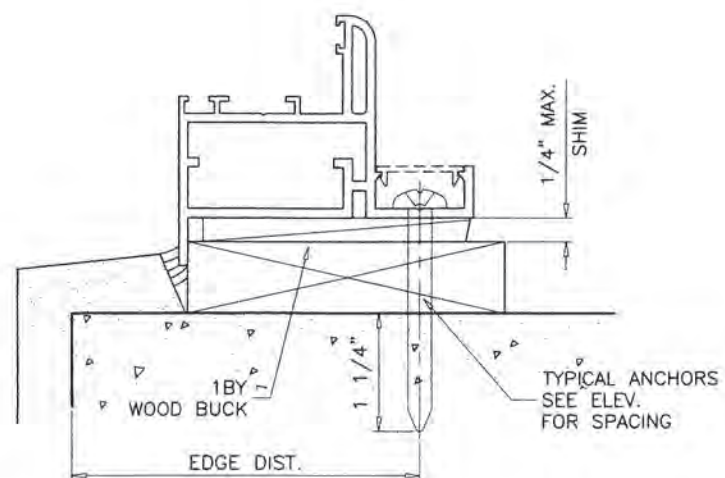
DIRECTLY INTO CONCRETE OR BLOCKS
 1-1/4" MIN. EMBED INTO CONCRETE (HEAD/SILL/JAMBS)
 1-1/4" MIN. EMBED INTO BLOCKS (JAMBS)

#14 SMS OR SELF DRILLING SCREWS (GRADE 2 CRS)
 INTO MIAMI-DADE COUNTY APPROVED MULLIONS
 OR
 INTO METAL STRUCTURES (HEAD/SILL/JAMBS)
 (3) THREADS MIN. TO EXTEND BEYOND METAL THICKNESS
 ALUMINUM: 1/8" THK. MIN. (6063-T5 MIN.)
 STEEL: 1/8" THK. MIN. ($F_y = 36$ KSI MIN.)
 (STEEL IN CONTACT WITH ALUMINUM TO BE PLATED OR PAINTED)

TYPICAL EDGE DISTANCE

INTO CONCRETE AND BLOCKS = 2-1/2" MIN.
 INTO WOOD STRUCTURE = 1" MIN.
 INTO METAL STRUCTURE = 3/4" MIN.

WOOD AT HEAD, SILL OR JAMBS SG = 0.55 MIN.
 CONCRETE AT HEAD, SILL OR JAMBS $f'_c = 3000$ PSI MIN.
 C-90 HOLLOW/FILLED BLOCK AT JAMBS $f'_m = 2000$ PSI MIN.



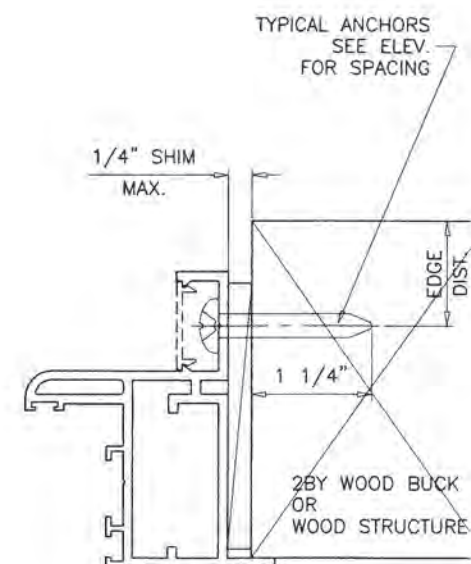
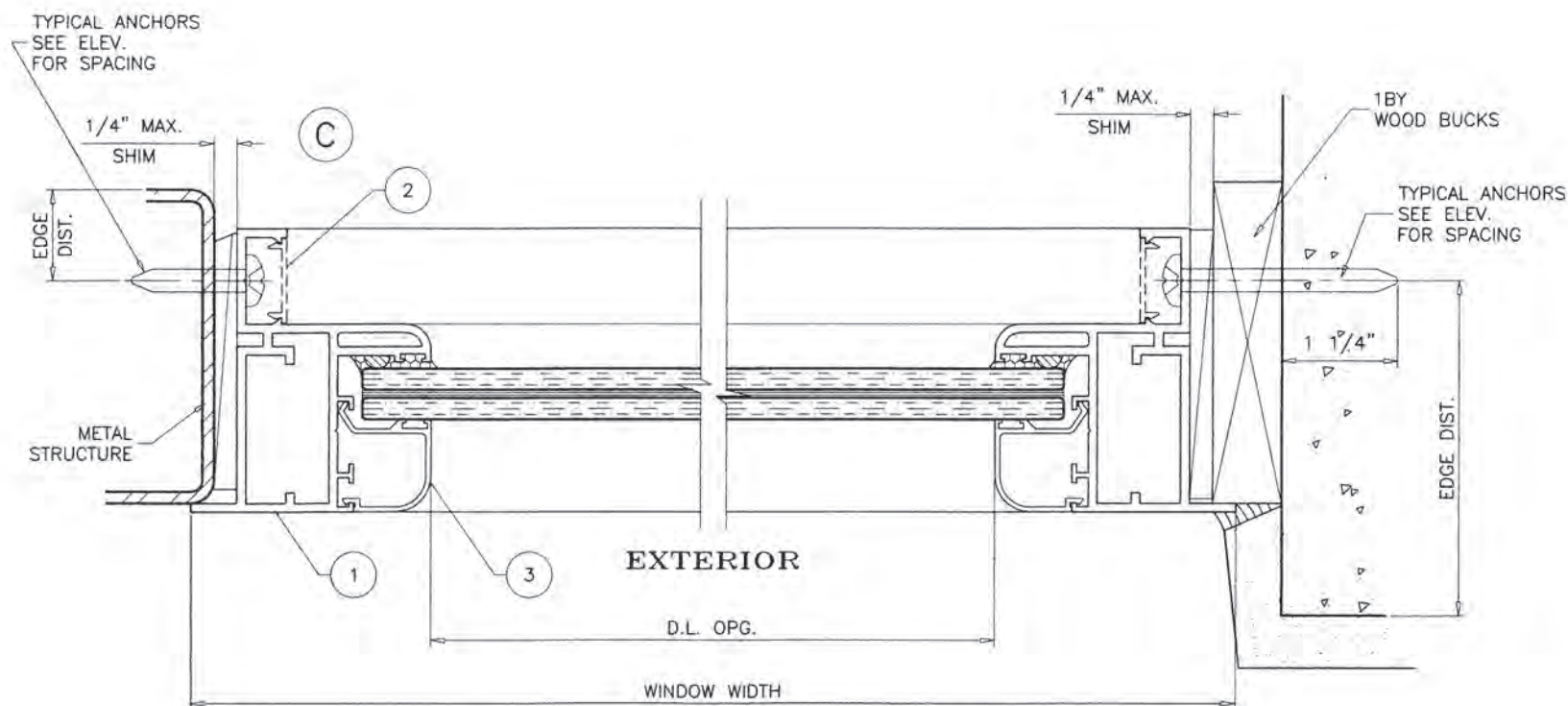
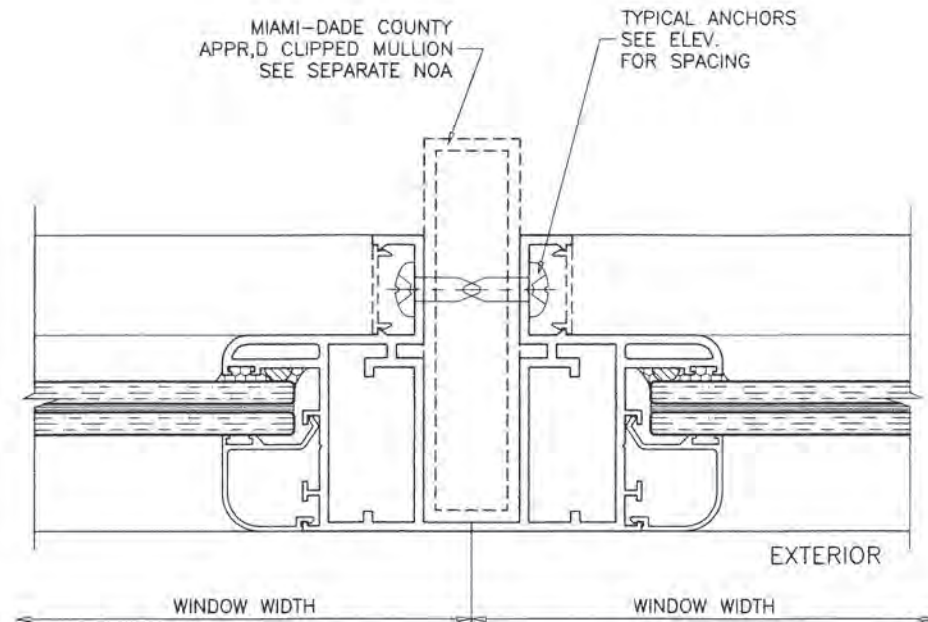
PRODUCT APPROVED
 as complying with the Florida
 Building Code
 NOA-No. 24-0828.07
 Approval Date 11/07/2024
 By 
 Miami-Dade Product Control



AL-FAROOQ CORPORATION
 ENGINEERS & PRODUCT DEVELOPMENT
 9360 SUNSET DRIVE, SUITE 220
 MIAMI, FLORIDA 33173
 TEL. (305) 264-8100
 FBPE #3538
 WWW.AFCENG.COM
 COMP-ANL\24-45D-EWD

SERIES PW-800-50 ALUM FIXED WINDOW (L.M.I.)
Eurotech Industries Inc.
 4201 N.E. 12th Terrace
 Oakland Park, Florida 33334
 Tel. (954) 630-9967
 www.etiwindows.com

revisions:		no date by description	
date:	07-26-24	scale:	1/2" = 1"
dr. by:	TARIQ	chk. by:	
drawing no.	24-45D	sheet	3 of 6



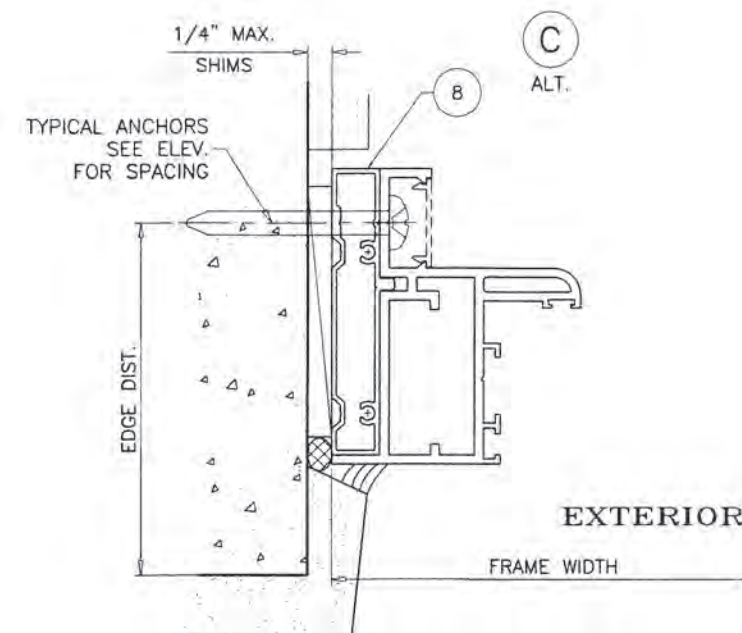
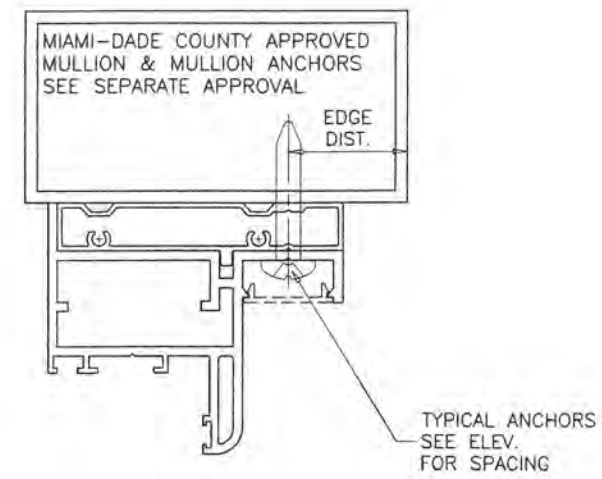
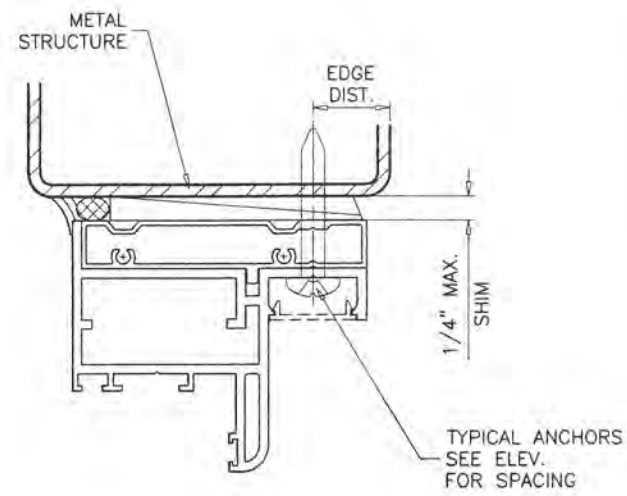
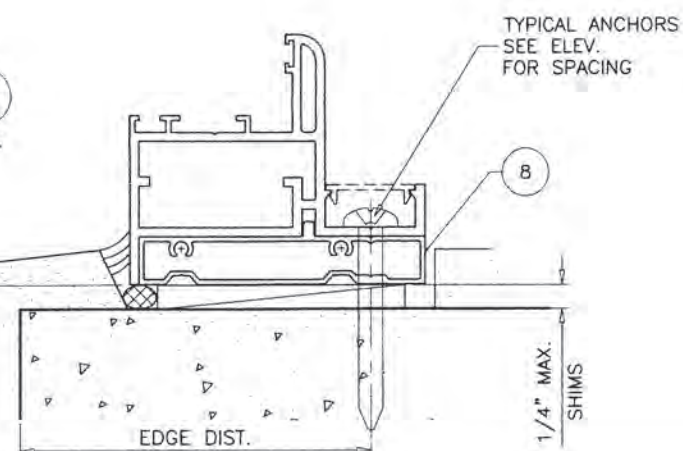
PRODUCT APPROVED
as complying with the Florida
Building Code
NOA-No. 24-0828.07
Approval Date 11/07/2024
By *[Signature]*
Miami-Dade Product Control



AL-FAROOQ CORPORATION
ENGINEERS & PRODUCT DEVELOPMENT
9360 SUNSET DRIVE, SUITE 220
MIAMI, FLORIDA 33173
TEL. (305) 264-8100
WWW.AFCENG.COM
FBPE #3538
COMP-ANL\24-45D-EWD

SERIES PW-800-50 ALUM FIXED WINDOW (L.M.I.)
Eurotech Industries Inc.
4201 N.E. 12th Terrace
Oakland Park, Florida 33334
Tel. (954) 630-9967
www.etiwindows.com

revisions:		no date by description	
date:	07-26-24	scale:	1/2" = 1"
dr. by:	TARIQ	chk. by:	
drawing no.	24-45D	sheet	4 of 6



FLANGE FRAMES WITH FLUSH FRAME ADAPTERS

SEE SHEETS 3 & 4 FOR WINDOW DETAILS

PRODUCT APPROVED
as complying with the Florida
Building Code

NOA-No. 24-0828.07

Approval Date 11/07/2024

By
Miami-Dade Product Control



SERIES PW-800-50 ALUM FIXED WINDOW (L.M.I.)

Eurotech Industries Inc.
4201 N.E. 12th Terrace

4201 N.E. 12th Terrace
Oakland Park, Florida 33334

Tel. (954) 630-9967

AL-FAROOQ CORPORATION

ALFA ROMEO CORPORATION
ENGINEERS & PRODUCT DEVELOPMENT
9360 SUNSET DRIVE, SUITE 220

9360 SUNSET DRIVE, SUITE 220
MIAMI, FLORIDA 33173

MIAMI, FLORIDA 331173
TEL. (305) 264-8100

WWW.AFCENG.COM

FBPE #3538

FBPE #3538

revisions:	
no date	by description

date: 07-26-24

scale: $1/2'' = 1''$

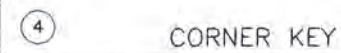
dr. by: TARIQ

chk. by:

drawing no.

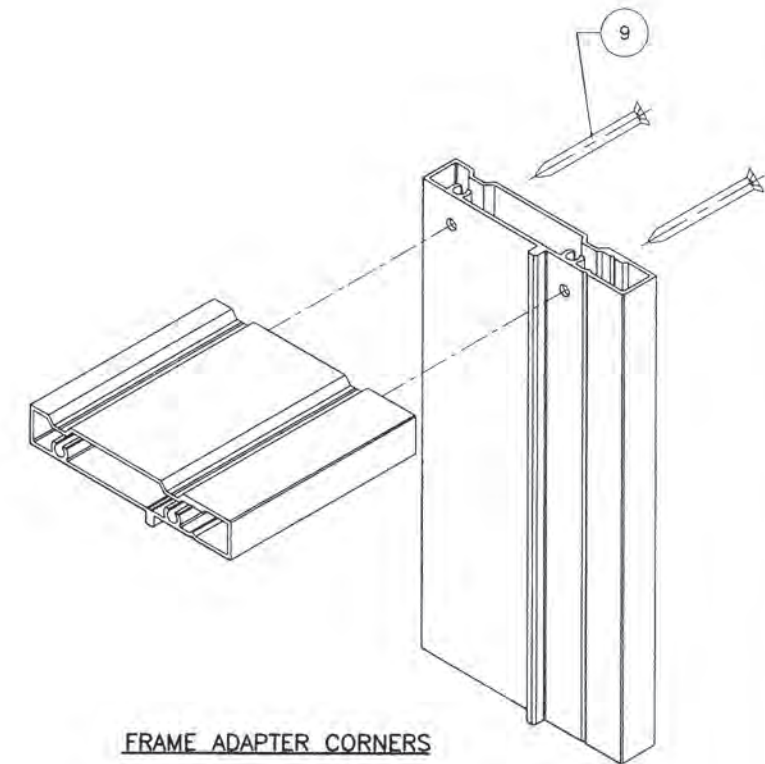
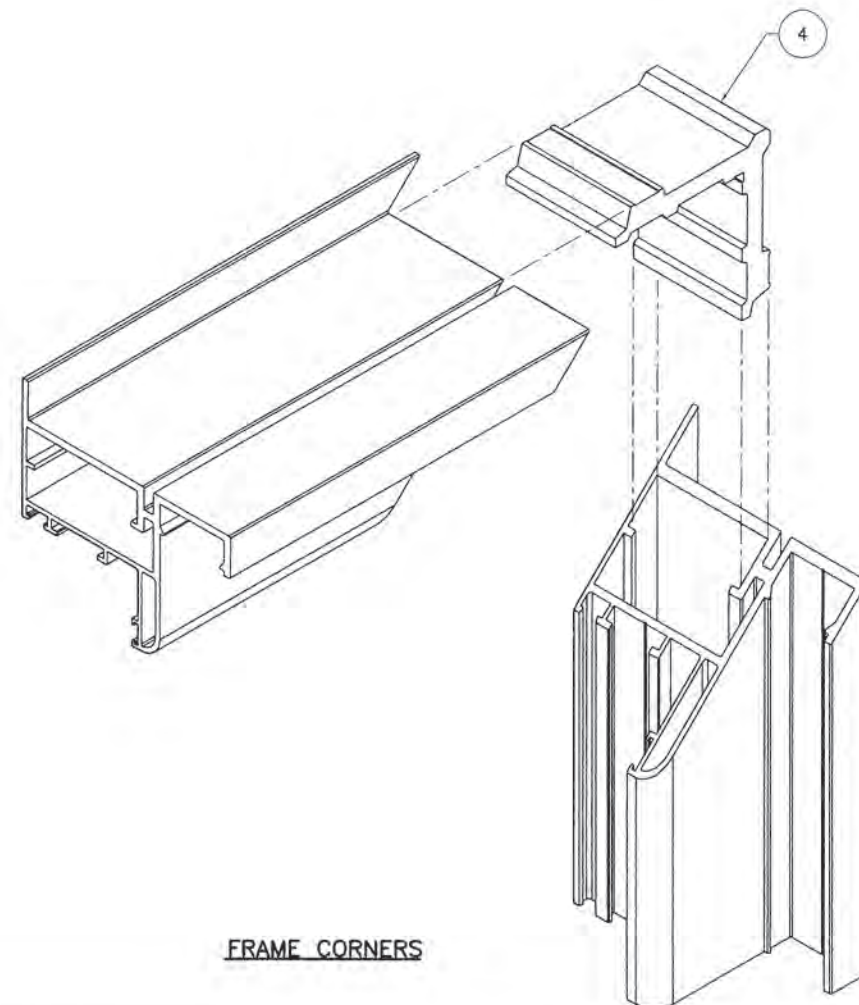
24-45D

sheet 5 of 6



ITEM	PART #	QUANTITY	DESCRIPTION	MATERIAL	MANF./SUPPLIER/REMARKS
1	PW020	4	FLANGE FRAME	6063-T6	—
2	HW 013	4	FRAME COVER (OPTIONAL)	6063-T6	—
3	VZ1535A	4	GLAZING BEAD	6063-T6	—
4	ER014	4	CORNER KEY	6063-T5	—
5	—	AS REQD.	BUMP ON SPACER	SILICONE	—
6	—	2/ LITE	SETTING BLOCKS AT 1/4 POINTS (1/4" X 1/4" X 2" LONG)	EPDM	DUROMETER 80±5 SHORE A
7	—	—	GLAZING GASKET	EPDM	DUROMETER 75±5 SHORE A
8	7274	4	FLUSH FRAME ADAPTER	6063-T6	—
9	#8 X 1-1/4"	2/ CORNER	FRAME ADAPTER ASSEMBLY FASTENERS	ST. STEEL	FH SMS

ALL JOINTS AND FRAME CONNECTIONS SEALED WITH
GE SCS2800 SILGLAZE II SEALANT.



PRODUCT APPROVED
as complying with the Florida
Building Code
NOA-No. 24-0828.07
Approval Date 11/07/2024
By CS
Miami-Dade Product Control



SERIES PW-800-50 ALUM FIXED WINDOW (L.M.I.)

Eurotech Industries Inc.
4201 N.E. 12th Terrace
Oakland Park, Florida 33334
Tel. (954) 630-9967 www.eurotech.com

AL-FAROOQ CORPORATION
ENGINEERS & PRODUCT DEVELOPMENT
9360 SUNSET DRIVE, SUITE 220
MIAMI, FLORIDA 33173
TEL. (305) 264-8100
WWW.AFCENG.COM
FRPE #3538
COMP-ANL \24-

www.etiwindows.com

FBPE #3538

FBPE #3538

FBPE #3538 COM

COMP-ANL\24-

COMP-ANL\24-45D-EWD

COMP-ANL\24-45D-EWD