



DEPARTMENT OF REGULATORY AND ECONOMIC RESOURCES (RER)
BOARD AND CODE ADMINISTRATION DIVISION
NOTICE OF ACCEPTANCE (NOA)

MIAMI-DADE COUNTY
PRODUCT CONTROL SECTION

11805 SW 26 Street, Room 208
Miami, Florida 33175-2474
T (786) 315-2590 F (786) 315-2599
www.miamidade.gov/building

ACME Engineering and Manufacturing Corporation
1820 N. York Street
Muskogee, OK 74403

SCOPE: This NOA is being issued under the applicable rules and regulations governing the use of construction materials. The documentation submitted has been reviewed and accepted by Miami-Dade County RER-Product Control Section to be used in Miami Dade County and other areas where allowed by the Authority Having Jurisdiction (AHJ).

This NOA shall not be valid after the expiration date stated below. The Miami-Dade County Product Control Section (In Miami Dade County) and/or the AHJ (in areas other than Miami Dade County) reserve the right to have this product or material tested for quality assurance purposes. If this product or material fails to perform in the accepted manner, the manufacturer will incur the expense of such testing and the AHJ may immediately revoke, modify, or suspend the use of such product or material within their jurisdiction. RER reserves the right to revoke this acceptance if it is determined by Miami-Dade County Product Control Section that this product or material fails to meet the requirements of the applicable building code.

This product is approved as described herein and has been designed to comply with the Florida Building Code, including the High Velocity Hurricane Zone.

DESCRIPTION: Series PDU & PNU Aluminum Rooftop Exhaust Fans

APPROVAL DOCUMENT: Drawing No. **686759**, titled "PDU-PNU Hurricane Fans", sheets 1 through 11 of 11, dated 12/09/15, with revision **I** dated 08/16/24, prepared by manufacturer, signed and sealed by Richard Boyette, P.E. bearing the Miami-Dade County Product Control Revision stamp with the Notice of Acceptance number and expiration date by the Miami-Dade County Product Control Section.

MISSILE IMPACT RATING: Large and Small Missile Impact Resistant

LABELING: Each unit shall bear a permanent label with the manufacturer's name or logo, city, state, model/series, and following statement: "Miami-Dade County Product Control Approved", unless otherwise noted herein.

RENEWAL of this NOA shall be considered after a renewal application has been filed and there has been no change in the applicable building code negatively affecting the performance of this product.


TERMINATION of this NOA will occur after the expiration date or if there has been a revision or change in the materials, use, and/or manufacture of the product or process. Misuse of this NOA as an endorsement of any product, for sales, advertising or any other purposes shall automatically terminate this NOA. Failure to comply with any section of this NOA shall be cause for termination and removal of NOA.

ADVERTISEMENT: The NOA number preceded by the words Miami-Dade County, Florida, and followed by the expiration date may be displayed in advertising literature. If any portion of the NOA is displayed, then it shall be done in its entirety.

INSPECTION: A copy of this entire NOA shall be provided to the user by the manufacturer or its distributors and shall be available for inspection at the job site at the request of the Building Official. This NOA **revises NOA No. 20-1217.04** and consists of this page 1 and evidence page E-1, E-2 and E-3, as well as approval document mentioned above.

The submitted documentation was reviewed by **Manuel Perez, P.E.**




9/27/24

NOA No. 24-0904.06
Expiration Date: January 13, 2026
Approval Date: October 03, 2024
Page 1

ACME Engineering and Manufacturing Corporation

NOTICE OF ACCEPTANCE: EVIDENCE SUBMITTED

1. EVIDENCE SUBMITTED UNDER PREVIOUS NOA's

A. DRAWINGS

1. Manufacturer's die drawings and sections.
(Submitted under NOA No. 15-1014.05)
2. Drawing No. **686759**, titled "PDU-PNU Hurricane Fans", sheets 1 through 11 of 11, dated 12/09/15, with revision **H** dated 10/21/20, prepared by manufacturer, signed and sealed by Richard Boyette, P.E.
(Submitted under NOA No. 20-1217.04)

B. TESTS

1. Test report on Uniform Static Air Pressure Test per FBC, TAS 202-94 of CH62 and CH68 Roof Curbs, prepared by Intertek/Architectural Testing, Inc., Test Report No. **E1749.01-801-44**, dated 11/05/2014, with Revision 1 dated 07/16/2015, signed and sealed by Joseph A. Reed, P.E.
(Submitted under NOA No. 15-1014.05)
2. Test reports on: 1) Uniform Static Air Pressure Test, Loading per FBC, TAS 202-94
2) Large Missile Impact Test per FBC, TAS 201-94
3) Cyclic Wind Pressure Test per FBC, TAS 203-94,
along with marked-up drawings and installation diagram of three Series/Model PNU-300 Aluminum Roof Mounted Exhaust Fans, prepared by Architectural Testing, Inc., Test Report No. **90348.02-801-18**, dated 04/12/2010, with Revision 1 dated 11/22/2010, signed and sealed by Joseph A. Reed, P.E.
(Submitted under NOA No. 17-0925.02)

C. CALCULATIONS

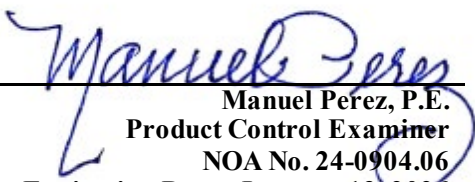
1. Anchor verification calculations prepared by Rick Boyette Consulting, Inc, dated 05/22/2018, signed and sealed by Richard Boyette, P.E.
(Submitted under NOA No. 18-0620.09)

D. QUALITY ASSURANCE

1. Miami-Dade Department of Regulatory and Economic Resources (RER)

E. MATERIAL CERTIFICATIONS

1. None.


Manuel Pérez, P.E.
Product Control Examiner
NOA No. 24-0904.06
Expiration Date: January 13, 2026
Approval Date: October 03, 2024

ACME Engineering and Manufacturing Corporation

NOTICE OF ACCEPTANCE: EVIDENCE SUBMITTED


1. EVIDENCE SUBMITTED UNDER PREVIOUS NOA's (CONTINUED)

F. STATEMENTS

1. Statement letter of conformance, complying with **FBC 7th Edition (2020)** dated 11/19/20, issued by manufacturer, signed and sealed by Richard Boyette, P.E.
(Submitted under NOA No. 20-1217.04)
2. Statement letter of no financial interest dated 05/26/18, issued by manufacturer, signed and sealed by Richard Boyette, P.E.
(Submitted under NOA No. 18-0620.09)

G. OTHERS

1. Notice of Acceptance No. **18-0620.09**, issued to ACME Engineering and Manufacturing Corporation for their Series PDU & PNU Aluminum Rooftop Exhaust Fans, approved on 08/09/08 and expiring on 01/13/21.


Manuel Perez, P.E.
Product Control Examiner
NOA No. 24-0904.06
Expiration Date: January 13, 2026
Approval Date: October 03, 2024

ACME Engineering and Manufacturing Corporation

NOTICE OF ACCEPTANCE: EVIDENCE SUBMITTED

2. NEW EVIDENCE SUBMITTED

A. DRAWINGS

1. Drawing No. **686759**, titled “PDU-PNU Hurricane Fans”, sheets 1 through 11 of 11, dated 12/09/15, with revision **I** dated 08/16/24, prepared by manufacturer, signed and sealed by Richard Boyette, P.E.

B. TESTS

1. None.

C. CALCULATIONS

1. Anchor verification calculations prepared by Rick Boyette Consulting, Inc, dated 08/17/24, signed and sealed by Richard Boyette, P.E.

D. QUALITY ASSURANCE

1. Miami-Dade Department of Regulatory and Economic Resources (RER)

E. MATERIAL CERTIFICATIONS

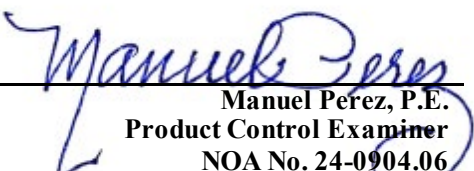
1. None.

F. STATEMENTS

1. Statement letter of conformance, complying with **FBC 8th Edition (2023)** dated August 17, 2024, issued by manufacturer, signed and sealed by Richard Boyette, P.E.
2. Statement letter of no financial interest dated August 17, 2024, issued by manufacturer, signed and sealed by Richard Boyette, P.E.

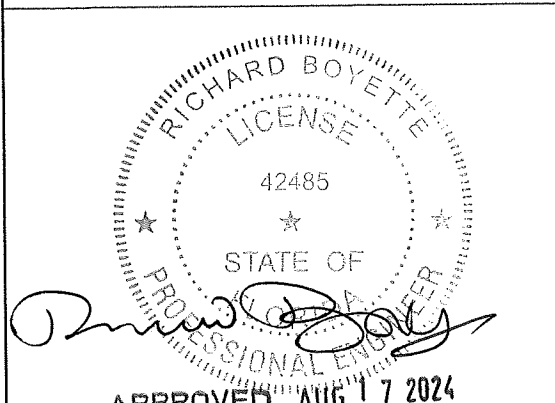
G. OTHERS

1. Notice of Acceptance No. **20-1217.04**, issued to ACME Engineering and Manufacturing Corporation for their Series PDU & PNU Aluminum Rooftop Exhaust Fans, approved on 02/11/21 and expiring on 01/13/26.


Manuel Pérez, P.E.
Product Control Examiner
NOA No. 24-0904.06
Expiration Date: January 13, 2026
Approval Date: October 03, 2024

INDEX

- 1. Roof fan dimensions.
- 2. Roof fan PDU080-200 construction.
- 3. Roof fan PNU080-245 construction.
- 4. Roof fan PNU235-300 construction.
- 5. Roof fan mounting.
- 6. Wall fan dimensions.
- 7. Wall fan PDU080-200 construction.
- 8. Wall fan PNU080-245 construction.
- 9. Wall fan PNU235-300 construction.
- 10. Wall fan mounting.



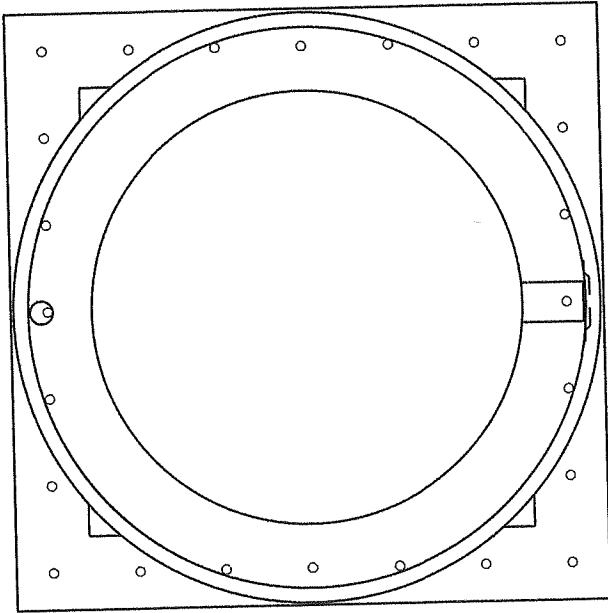
Richard Boyette, FL PE #42485
Rick Boyette Consulting Inc - CoA #9707
4031 Coconut Blvd
Royal Palm Beach FL 33411
561-790-5766

PRODUCT REVISED
As complying with the Florida
Building Code
NOA-No. **24-0904.06**
Expiration Date: **01/13/2026**
By: *Manuel Perez*
Miami Dade Product Control

DWG NO. 686759		Sheet 1/11		LET.	REVISION RECORD		BY	CKD.	DATE
TITLE PDU-PNU HURRICANE FANS		MAT'L		F	ADDED SHEETS 1 & 7 - 11 FOR WALL MOUNT		TCR	TGB	12/14/15
				G	REVISED FOR 2017 FBC		MTJ	AS	4/16/18
				H	REVISED FOR 2020 FBC		MTJ	AS	10/21/20
				I	REVISED FOR 2023 FBC		MTJ	AS	8/16/24
DRAFTER TCR		DATE 12/9/15							
DESIGN ENG. TCR 12/9/15		RELEASED							
CHKD BY	MFG.	SCALE NTS							

Acme Engineering &
Manufacturing Corp.
1820 N. York Street
Muskogee, OK 74403
918-682-7791

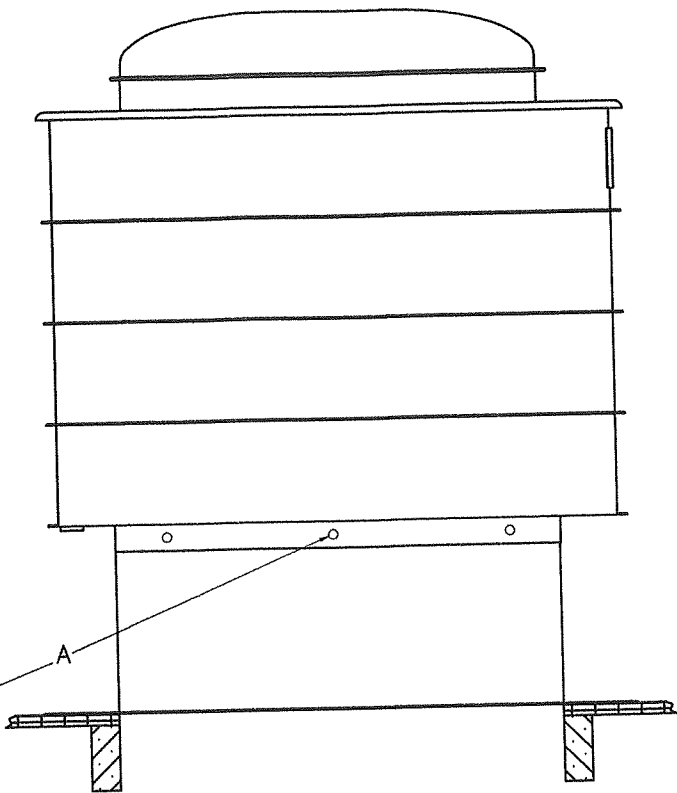
Large Missile Impact Resistant
Max rated design pressure : +53.0 / -112.0 PSF



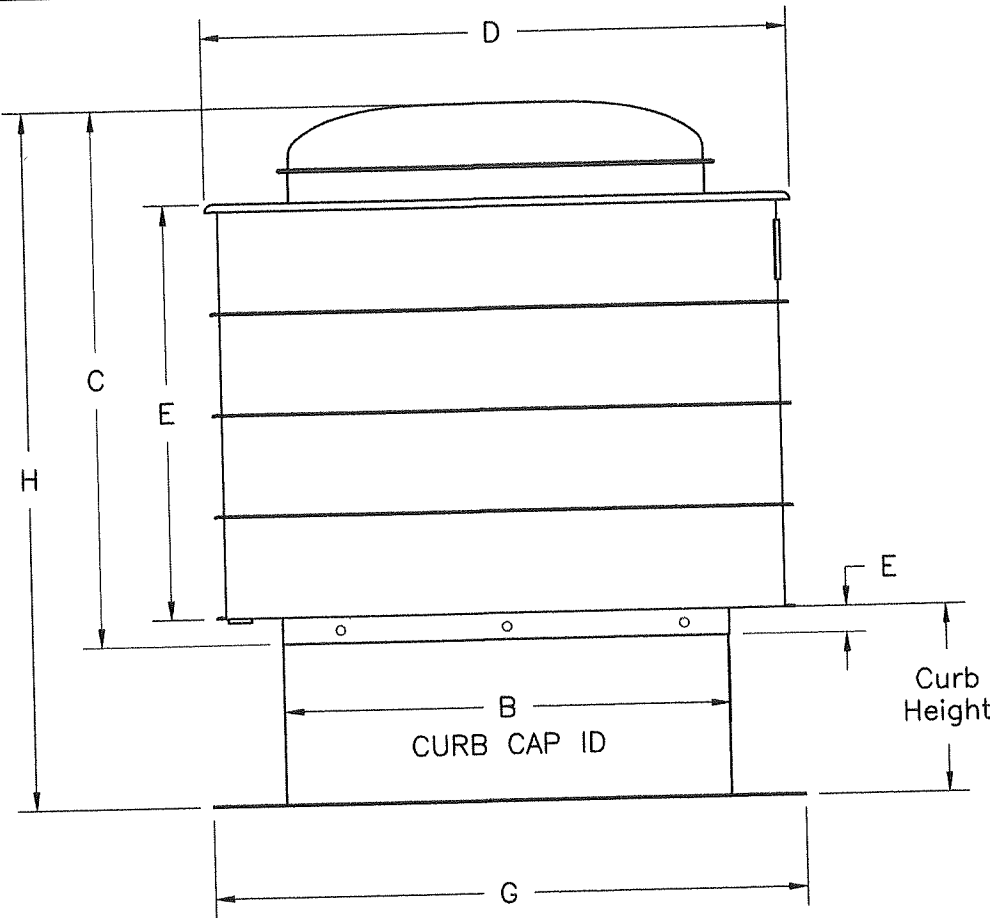
Plan View - Installation

PRODUCT REVISED
As complying with the Florida
Building Code
NOA-No. **24-0904.06**
Expiration Date: **01/13/2026**
By: *Manuel Perez*
Miami-Dade Product Control

Fan to Roof curb
connection
1/4" sheet metal screws
on minimum 6" centers

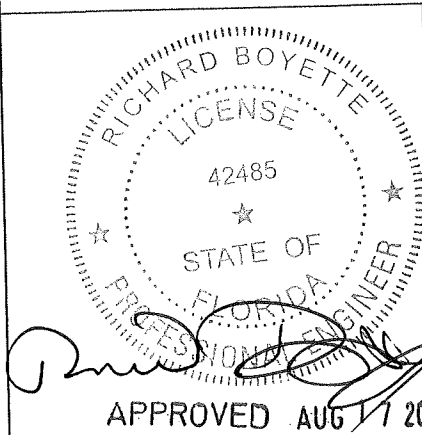


Elevation View - Installation



Dimensions (inches)

- Notes:
- a. This rooftop exhaust fan has been designed to comply with the 2023 FBC ASCE 7-22.
 - b. Roof structure must be designed to withstand the weight and loading transmitted by this rooftop exhaust fan.
 - c. This approval is for the structural capacity of the exterior housing only, it does not include any interior mechanism and/or electrical part.
 - d. This rooftop exhaust fan has not been tested for wind driven rain according to Florida Building Code, TAS 100(A).
 - e. All fasteners must be corrosion resistant.



Richard Boyette, FL PE #42485
Rick Boyette Consulting Inc - CoA #9707
4031 Coconut Blvd
Royal Palm Beach FL 33411
561-790-5766

⑤				Fastener Count	Fan Dimensions (inches)							Curb Dimensions		Fan + Curb Weight (lbs)
					A	B	C	D	E	F	G	H	Curb Height	
Model				A	B	C	D	E	F	G	H	Curb Height	Curb Material	Weight (lbs)
PDU080				8	13.50	13.06	20.63	12.84	2.00	21.50	56.41	8 to 42	18 ga. G90 galv.	25
PDU100				8	13.50	16.10	20.63	12.84	2.00	21.50	56.41	8 to 42	18 ga. G90 galv.	33
PDU110				8	13.50	16.41	20.63	12.84	2.00	21.50	56.41	8 to 42	18 ga. G90 galv.	33
PDU120				12	19.00	19.48	26.41	16.59	2.00	27.00	60.87	8 to 42	18 ga. G90 galv.	55
PDU135				12	19.00	20.87	26.41	16.59	2.00	27.00	60.87	8 to 42	18 ga. G90 galv.	55
PDU150	PDU165			12	24.00	23.89	30.16	21.92	2.00	32.00	63.89	8 to 42	18 ga. G90 galv.	83
PDU185	PDU200			16	28.00	25.75	34.65	21.99	2.00	36.00	65.75	8 to 42	18 ga. G90 galv.	103
PNU080	PNU100			12	24.00	26.35	33.66	22.13	2.00	32.00	67.37	8 to 42	18 ga. G90 galv.	111
PNU120	PNU135			12	24.00	27.37	33.66	22.13	2.00	32.00	67.37	8 to 42	18 ga. G90 galv.	111
PNU150	PNU155	PNU160	PNU165	16	28.00	26.92	38.00	24.14	2.00	36.00	65.92	8 to 42	18 ga. G90 galv.	152
PNU185	PNU200			16	28.00	31.56	39.75	28.73	2.00	36.00	71.56	8 to 42	18 ga. G90 galv.	205
PNU235	PNU240	PNU245		20	34.00	36.25	44.75	31.50	2.00	42.00	76.25	8 to 42	18 ga. G90 galv.	232
PNU290	PNU295	PNU300		24	40.00	42.50	55.29	34.25	2.00	48.00	82.50	8 to 42	18 ga. G90 galv.	442

DWG NO. 686759 Sheet 2/11

TITLE PDU-PNU HURRICANE FANS

MAT'L

DRAFTER TCR DATE 05/19/10

DESIGN ENG. TCR 05/19/10 RELEASED

CHKD BY MFG. SCALE NTS

LET.	REVISION RECORD	BY	CKD.	DATE
B	UPDATED AND MERGED PNU NOMENCLATURE 4/8/11 BPF	BPF	TCR	4/8/11
C	REVISED FOR FLORIDA BUILDING CODE 2010	BPF	TCR	7/3/12
D	REVISED FOR 2014 FBC	TCR	TGB	5/28/15
E	REVISED FOR TALL CURBS	ZPO	TGB	9/14/15
F	ADDED SHEETS 1 & 7 - 11 FOR WALL MOUNT	TCR	TGB	12/14/15
G	REVISED FOR 2017 FBC	MTJ	AS	4/16/18
H	REVISED FOR 2020 FBC	MTJ	AS	10/21/20
I	REVISED FOR 2023 FBC	MTJ	AS	8/16/24

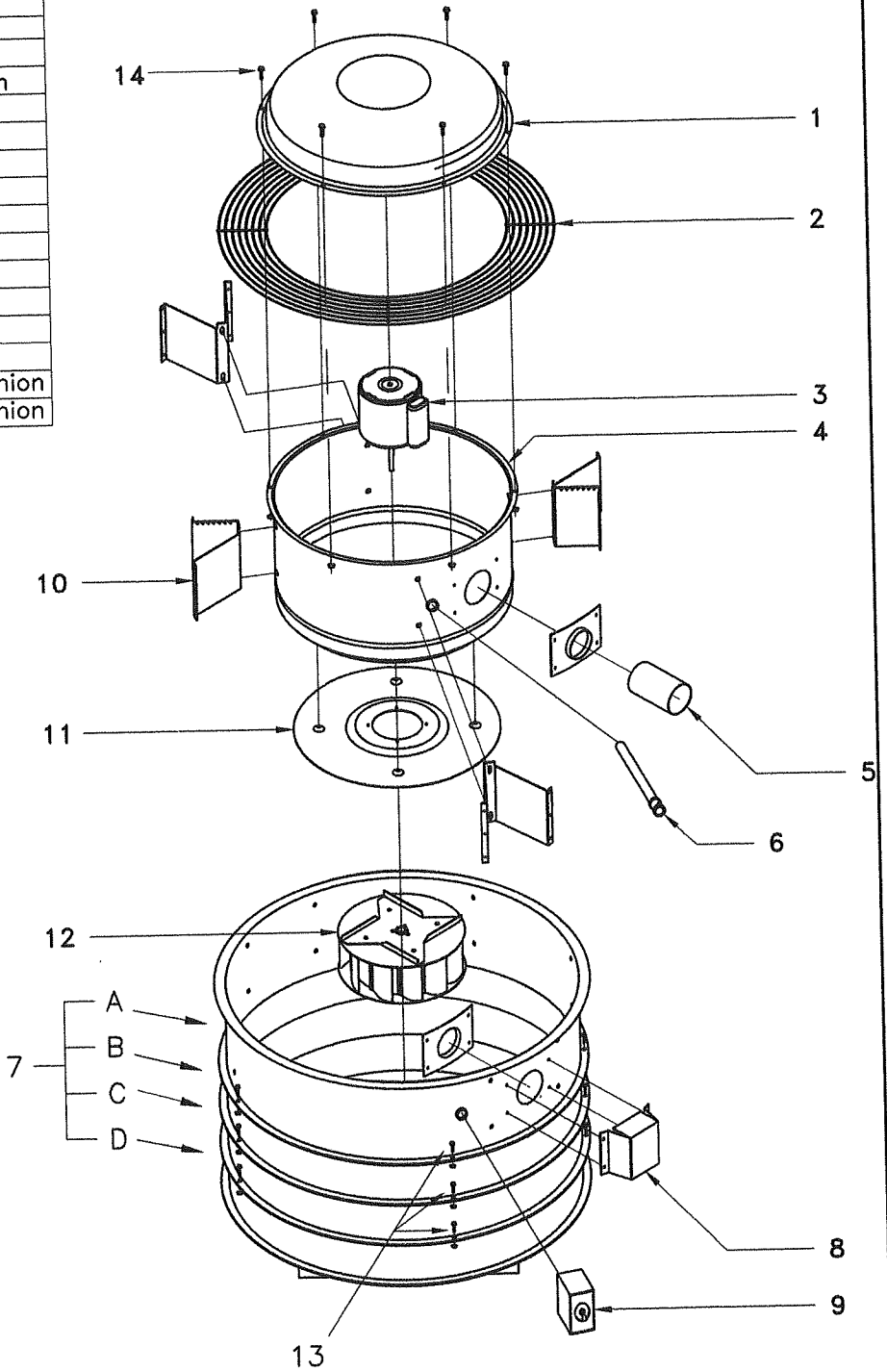
Acme Engineering &
Manufacturing Corp.
1820 N. York Street
Muskogee, OK 74403
918-682-7791

Item #	Qty.	Item	Size	80	100	110	120	135
1	1	Motor Enclosure Cover		.050" aluminum	.050" aluminum	.050" aluminum	.050" aluminum	.050" aluminum
2	1	Discharge Guard		.125" galv. wire	.125" galv. wire	.125" galv. wire	.125" galv. wire	.125" galv. wire
3	1	Motor						
4	1	Motor Enclosure		20 ga. G90 galv.	20 ga. G90 galv.	20 ga. G90 galv.	20 ga. G90 galv.	20 ga. G90 galv.
5	1	Breather Tube		.065" wall aluminum	.065" wall aluminum	.065" wall aluminum	.065" wall aluminum	.065" wall aluminum
6	1	Wiring Post						
7A	1	Upper Windband		.080" aluminum	.080" aluminum	.080" aluminum	.080" aluminum	.080" aluminum
7B	1	Middle Windband					.080" aluminum	.080" aluminum
7C	1	Middle Windband						
7D	1	Lower Windband		.080" aluminum	.080" aluminum	.080" aluminum	.080" aluminum	.080" aluminum
8	1	Breather Tube Cover						
9	1	Disconnect Switch						
10	3	Support Bracket		14 ga. G90 galv.	14 ga. G90 galv.	14 ga. G90 galv.	14 ga. G90 galv.	14 ga. G90 galv.
11	1	Motor Enclosure Base		16 ga. G90 galv.	16 ga. G90 galv.	16 ga. G90 galv.	16 ga. G90 galv.	16 ga. G90 galv.
12	1	Impeller						
13	Δ	1/4"-20 Nuts and Bolts		6 bolts per flange union	6 bolts per flange union	6 bolts per flange union	6 bolts per flange union	6 bolts per flange union
14	Δ	1/4"-20 Nuts and Bolts		4 bolts per flange union	4 bolts per flange union	4 bolts per flange union	4 bolts per flange union	4 bolts per flange union

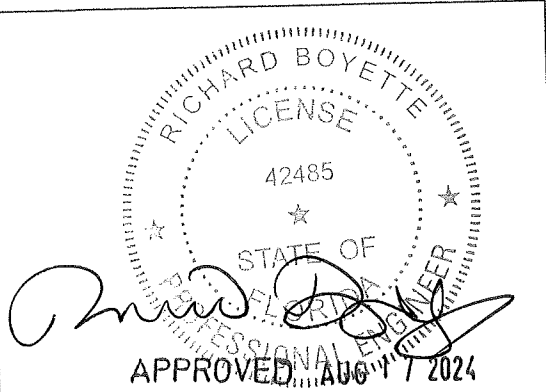
Item #	Qty.	Item	Size	150	165	185	200
1	1	Motor Enclosure Cover		.050" aluminum	.050" aluminum	.050" aluminum	.050" aluminum
2	1	Discharge Guard		.125" galv. wire	.125" galv. wire	.125" galv. wire	.125" galv. wire
3	1	Motor					
4	1	Motor Enclosure		20 ga. G90 galv.	20 ga. G90 galv.	20 ga. G90 galv.	20 ga. G90 galv.
5	1	Breather Tube		.065" wall aluminum	.065" wall aluminum	.065" wall aluminum	.065" wall aluminum
6	1	Wiring Post					
7A	1	Upper Windband		.080" aluminum	.080" aluminum	.080" aluminum	.080" aluminum
7B	1	Middle Windband		.080" aluminum	.080" aluminum	.080" aluminum	.080" aluminum
7C	1	Middle Windband					
7D	1	Lower Windband		.080" aluminum	.080" aluminum	.080" aluminum	.080" aluminum
8	1	Breather Tube Cover		.063" aluminum	.063" aluminum	.063" aluminum	.063" aluminum
9	1	Disconnect Switch					
10	3	Support Bracket		14 ga. G90 galv.	14 ga. G90 galv.	14 ga. G90 galv.	14 ga. G90 galv.
11	1	Motor Enclosure Base		16 ga. G90 galv.	16 ga. G90 galv.	16 ga. G90 galv.	16 ga. G90 galv.
12	1	Impeller					
13	Δ	1/4"-20 Nuts and Bolts		7 bolts per flange union	7 bolts per flange union	7 bolts per flange union	7 bolts per flange union
14	Δ	1/4"-20 Nuts and Bolts		5 bolts per flange union	5 bolts per flange union	5 bolts per flange union	5 bolts per flange union

* Steel material gages shown are nominal.
Aluminum thicknesses shown are nominal.
Actual thicknesses will vary in accordance
with industry standard tolerances.

PRODUCT REVISED
As complying with the Florida
Building Code
NOA-No. **24-0904.06**
Expiration Date: **01/13/2026**
By: *Manuel Fern*
Miami-Dade Product Control



PDU080 – PDU200 Fans



Richard Boyette, FL PE #42485
Rick Boyette Consulting Inc – CoA #9707
4031 Coconut Blvd
Royal Palm Beach FL 33411
561-790-5766

APPROVED AUG 17 2024

DWG NO.	686759	Sheet 3/11	LET.	REVISION RECORD		BY	CKD.	DATE
TITLE PDU-PNU HURRICANE FANS			B	REVISED FOR 2014 FBC		TCR	TGB	5/28/15
			C	NOT USED				
			D	NOT USED				
MAT'L			E	REVISED FOR 42" HIGH CURBS		ZPO	TCR	9/14/15
			F	ADDED SHEETS 1 & 7 - 11 FOR WALL MOUNT		TCR	TGB	12/14/15
DRAFTER TCR			G	REVISED FOR 2017 FBC		MTJ	AS	4/16/18
			H	REVISED FOR 2020 FBC		MTJ	AS	10/21/20
DESIGN ENG. TCR 05/19/10			I	REVISED FOR 2023 FBC		MTJ	AS	8/16/24
CHKD BY	MFG.	SCALE	NTS					

Acme Engineering & Manufacturing Corp.
1820 N. York Street
Muskogee, OK 74403
918-682-7791

Item#	Qty.	Item	Size	80, 100	120	135	150
1	1	Motor Enclosure Cover		.050" aluminum	.050" aluminum	.050" aluminum	.050" aluminum
2	1	Discharge Guard		.125" galv. wire	.125" galv. wire	.125" galv. wire	.125" galv. wire
3	1	Drive Base		12 ga. G90 galv.	12 ga. G90 galv.	12 ga. G90 galv.	12 ga. G90 galv.
4	1	Drive Brace		14 ga. G90 galv.	14 ga. G90 galv.	14 ga. G90 galv.	14 ga. G90 galv.
5	1	Motor					
6	1	Shaft & Bearing Assembly					
7	1	Motor Enclosure		22 ga. G90 galv.	22 ga. G90 galv.	22 ga. G90 galv.	22 ga. G90 galv.
8	4	Support Bracket		14 ga. G90 galv.	14 ga. G90 galv.	14 ga. G90 galv.	14 ga. G90 galv.
9	2	Bearing Cap		14 ga. G90 galv.	14 ga. G90 galv.	14 ga. G90 galv.	14 ga. G90 galv.
10	1	Breather Tube		.065" wall aluminum	.065" wall aluminum	.065" wall aluminum	.065" wall aluminum
11	1	Wiring Post					
12	1	Impeller					
13 A	1	Upper Windband		.080" aluminum	.080" aluminum	.080" aluminum	.080" aluminum
13 B	1	Middle Windband		.080" aluminum	.080" aluminum	.080" aluminum	.080" aluminum
13 C	1	Middle Windband		.080" aluminum	.080" aluminum	.080" aluminum	.080" aluminum
13 D	1	Lower Windband		.080" aluminum	.080" aluminum	.080" aluminum	.080" aluminum
14	1	Breather Tube Cover		.063" aluminum	.063" aluminum	.063" aluminum	.063" aluminum
15	1	Disconnect Switch					
16	1	Base Bracket		12 ga. G90 galv.	12 ga. G90 galv.	12 ga. G90 galv.	12 ga. G90 galv.
17	△	1/4"- 20 Nuts and Bolts		7 bolts per flange union	7 bolts per flange union	7 bolts per flange union	7 bolts per flange union
18	△	1/4"- 20 Nuts and Bolts		5 bolts per flange union	5 bolts per flange union	5 bolts per flange union	5 bolts per flange union

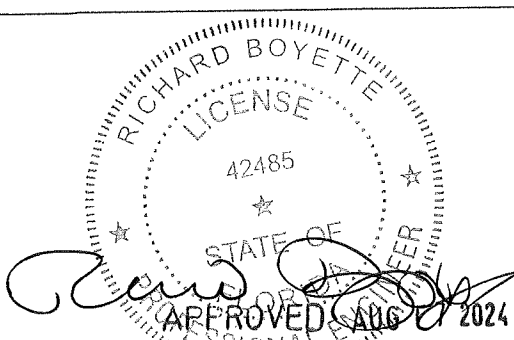
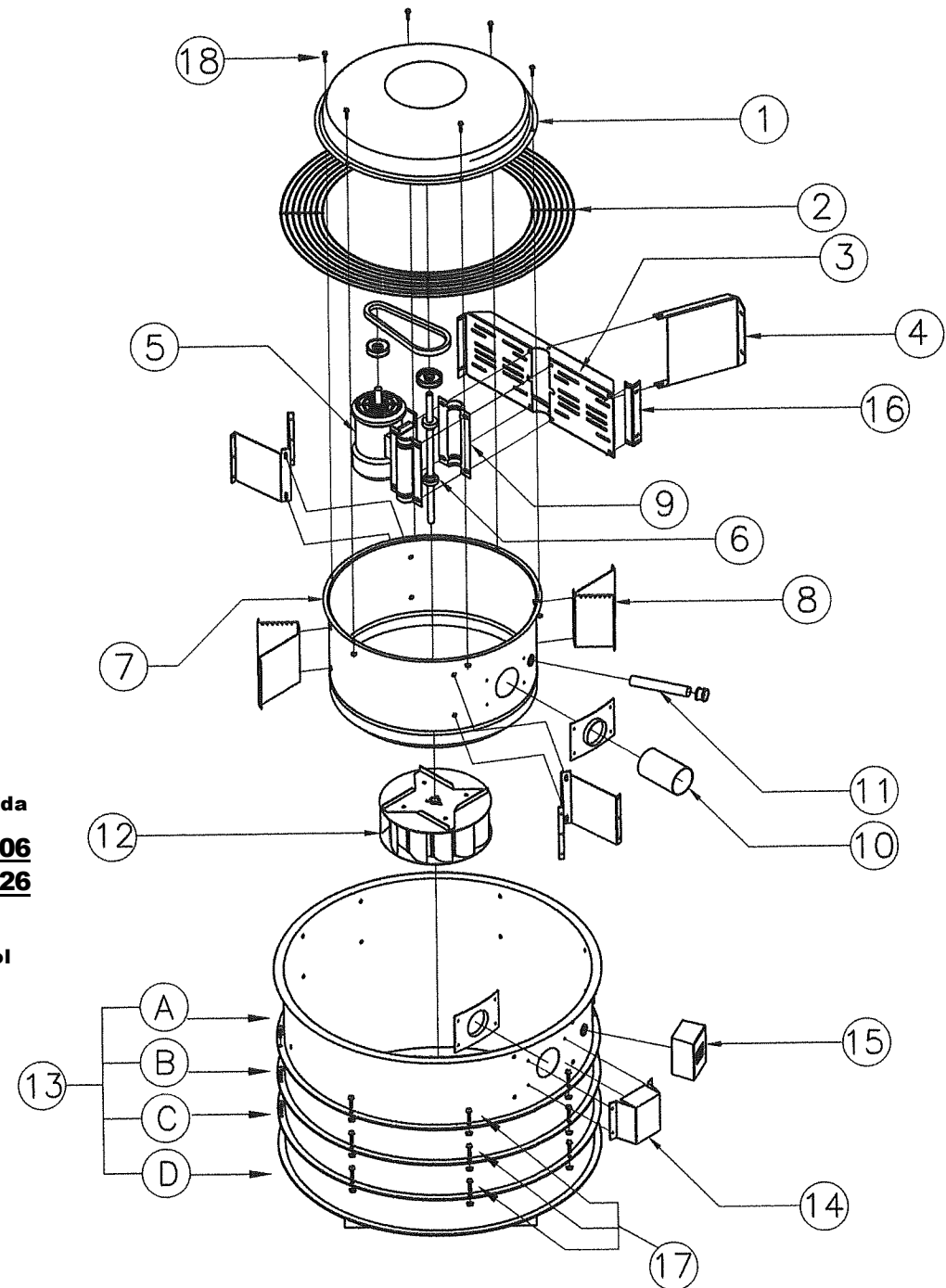
Item#	Qty.	Item	Size	155, 160, 165	185	200
1	1	Motor Enclosure Cover		.050" aluminum	.050" aluminum	.050" aluminum
2	1	Discharge Guard		.125" galv. wire	.125" galv. wire	.125" galv. wire
3	1	Drive Base		12 ga. G90 galv.	12 ga. G90 galv.	12 ga. G90 galv.
4	1	Drive Brace		14 ga. G90 galv.	14 ga. G90 galv.	14 ga. G90 galv.
5	1	Motor				
6	1	Shaft & Bearing Assembly				
7	1	Motor Enclosure		22 ga. G90 galv.	20 ga. G90 galv.	20 ga. G90 galv.
8	4	Support Bracket		14 ga. G90 galv.	14 ga. G90 galv.	14 ga. G90 galv.
9	2	Bearing Cap		14 ga. G90 galv.	10 ga. G90 galv.	10 ga. G90 galv.
10	1	Breather Tube		.065" wall aluminum	.065" wall aluminum	.065" wall aluminum
11	1	Wiring Post				
12	1	Impeller				
13 A	1	Upper Windband		.080" aluminum	.080" aluminum	.080" aluminum
13 B	1	Middle Windband		.080" aluminum	.080" aluminum	.080" aluminum
13 C	1	Middle Windband		.080" aluminum	.080" aluminum	.080" aluminum
13 D	1	Lower Windband		.080" aluminum	.080" aluminum	.080" aluminum
14	1	Breather Tube Cover		.063" aluminum	.063" aluminum	.063" aluminum
15	1	Disconnect Switch				
16	1	Base Bracket		12 ga. G90 galv.	12 ga. G90 galv.	12 ga. G90 galv.
17	△	1/4"- 20 Nuts and Bolts		7 bolts per flange union	7 bolts per flange union	7 bolts per flange union
18	△	1/4"- 20 Nuts and Bolts		5 bolts per flange union	5 bolts per flange union	5 bolts per flange union

Ⓑ

Ⓑ

PRODUCT REVISED
As complying with the Florida
Building Code
NOA-No. **24-0904.06**
Expiration Date: **01/13/2026**
By: *Manuel Perez*
Miami-Dade Product Control

* Steel material gages shown are nominal.
Aluminum thicknesses shown are nominal.
Actual thicknesses will vary in accordance
with industry standard tolerances.



Richard Boyette, FL PE #42485
Rick Boyette Consulting Inc - CoA #9707
4031 Coconut Blvd
Royal Palm Beach FL 33411
561-790-5766

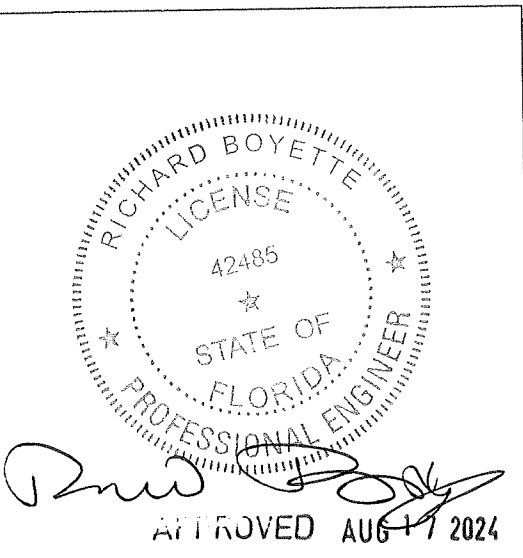
PNUXP080 - PNU245 Fans

DWG NO.	686759	Sheet 4/11	LET.	REVISION RECORD	BY	CKD.	DATE
TITLE	PDU-PNU HURRICANE FANS		B	REMOVED DUPLICATE DATA FOR PNU245	BPF	TCR	4/8/11
MAT'L			C	REVISED FOR FLORIDA BUILDING CODE 2010	BPF	TCR	7/6/12
DRAFTER	TCR	DATE 05/19/10/10	D	REVISED FOR 2014 FBC	TCR	TGB	5/28/15
DESIGN ENG.	TCR 05/19/10	RELEASED	E	REVISED FOR 42" HIGH CURBS	TCR	TGB	9/14/15
CHKD BY	MFG.	SCALE NTS	F	ADDED SHEETS 1 & 7 - 11 FOR WALL MOUNT	TCR	TGB	12/14/15
			G	REVISED FOR 2017 FBC	MTJ	AS	4/16/18
			H	REVISED FOR 2020 FBC	MTJ	AS	10/21/20
			I	REVISED FOR 2023 FBC	MTJ	AS	8/16/24

Acme Engineering &
Manufacturing Corp.
1820 N. York Street
Muskogee, OK 74403
918-682-7791

Item#	Qty.	Item	Size	235, 240, 245	290, 295, 300
1	1	Motor Enclosure Cover		.050" aluminum	.050" aluminum
2	1	Discharge Guard		.125" galv. wire	.177" galv. wire
3	1	Drive Base		12 ga. G90 galv.	10 ga. G90 galv.
4	1	Motor			
5	1	Breather Tube		.065" wall aluminum	.065" wall aluminum
6	1	Motor Enclosure Support		14 ga. G90 galv.	12 ga. G90 galv.
7	1	Motor Enclosure		20 ga. G90 galv.	20 ga. G90 galv.
8	1	Motor Enclosure Base		20 ga. G90 galv.	16 ga. G90 galv.
9	1	Impeller			
10	8	Support Channel		14 ga. G90 galv.	12 ga. G90 galv.
11	2	Corner Support			.063" aluminum
12	1	Breather Tube Cover		.063" aluminum	.063" aluminum
13 A	1	Upper Windband Assembly		.080" aluminum	.080" aluminum
13 B	1	Middle Windband Assembly		.080" aluminum	.080" aluminum
13 C	1	Middle Windband Assembly		.080" aluminum	.080" aluminum
13 D	1	Lower Windband Assembly		.080" aluminum	.080" aluminum
14	1	Drive Base		12 ga. G90 galv.	10 ga. G90 galv.
15	1	Shaft & Bearing Assembly			
16	2	Bearing Cap		10 ga. G90 galv.	10 ga. G90 galv.
17	24	1/4" - 20 Bolts & Nuts		8 per flange union	8 per flange union
18	6	1/4" - 20 Bolts & Nuts		6 per flange union	6 per flange union

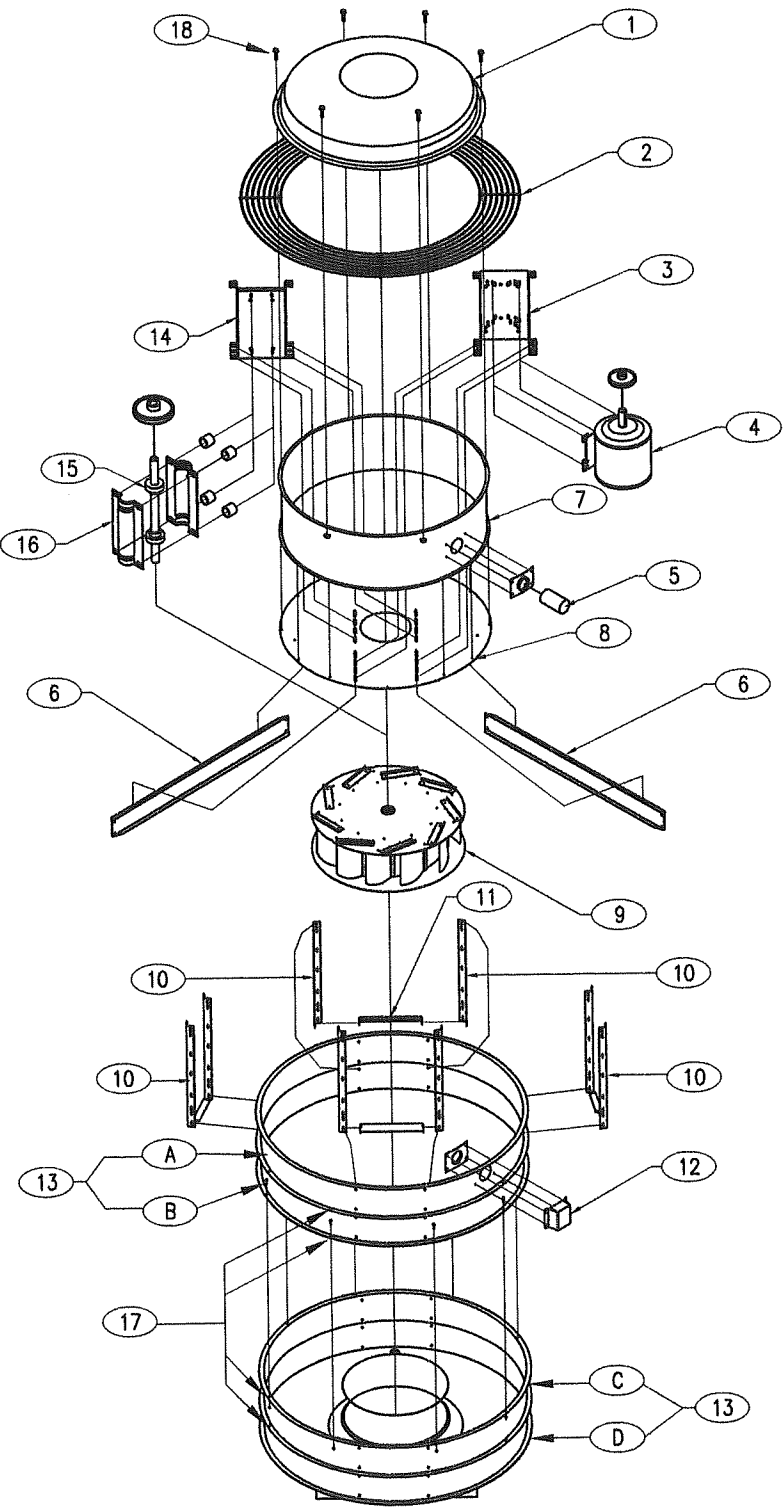
* Steel material gages shown are nominal.
Aluminum thicknesses shown are nominal.
Actual thicknesses will vary in accordance
with industry standard tolerances.



Richard Boyette, FL PE #42485
Rick Boyette Consulting Inc - CoA #9707
4031 Coconut Blvd
Royal Palm Beach FL 33411
561-790-5766

PRODUCT REVISED
As complying with the Florida
Building Code
NOA-No. **24-0904.06**
Expiration Date: **01/13/2026**
By: *Manuel Perez*
Miami-Dade Product Control

PNU235 - PNU300 Fans



DWG NO. 686759 Sheet 5/11

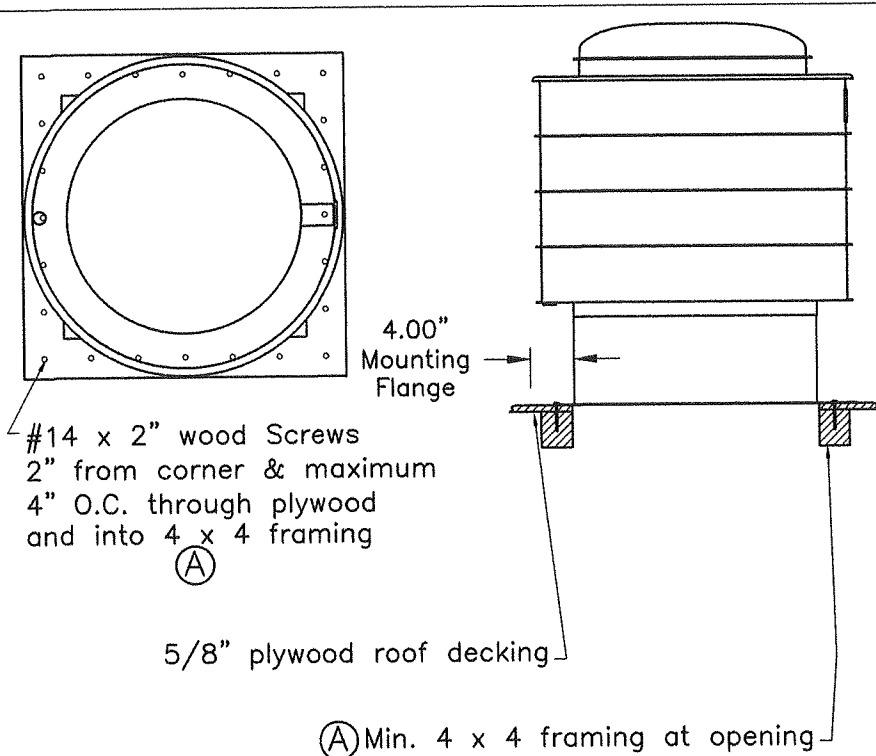
TITLE PDU-PNU HURRICANE FANS

MAT'L	
DRAFTER TCR	DATE 05/19/10/10
DESIGN ENG. TCR 05/19/10	RELEASED
CHKD BY	MFG. SCALE NTS

LET.	REVISION RECORD	BY	CKD.	DATE
B	UPDATED AND MERGED PNU NOMENCLATURE	BPF	TCR	4/8/11
C	REVISED FOR FLORIDA BUILDING CODE 2010	BPF	TCR	7/6/12
D	REVISED FOR 2014 FBC	TCR	TGB	5/28/15
E	REVISED FOR 42" HIGH CURBS	TCR	TGB	9/14/15
F	ADDED SHEETS 1 & 7 - 11 FOR WALL MOUNT	TCR	TGB	12/14/15
G	REVISED FOR 2017 FBC	MTJ	AS	4/16/18
H	REVISED FOR 2020 FBC	MTJ	AS	10/21/20
I	REVISED FOR 2023 FBC	MTJ	AS	8/16/24

Acme Engineering & Manufacturing Corp.
1820 N. York Street
Muskogee, OK 74403
918-682-7791

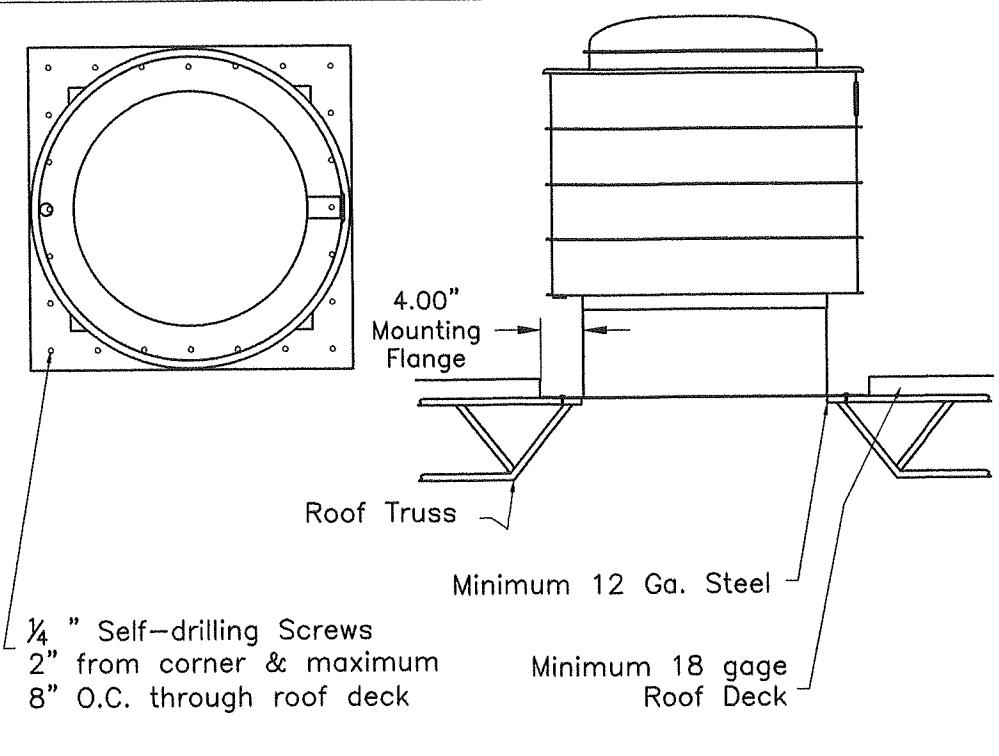
Large Missile Impact Resistant
Max rated design pressure : +53.0 / -112.0 PSF



Elevation View

Plan View

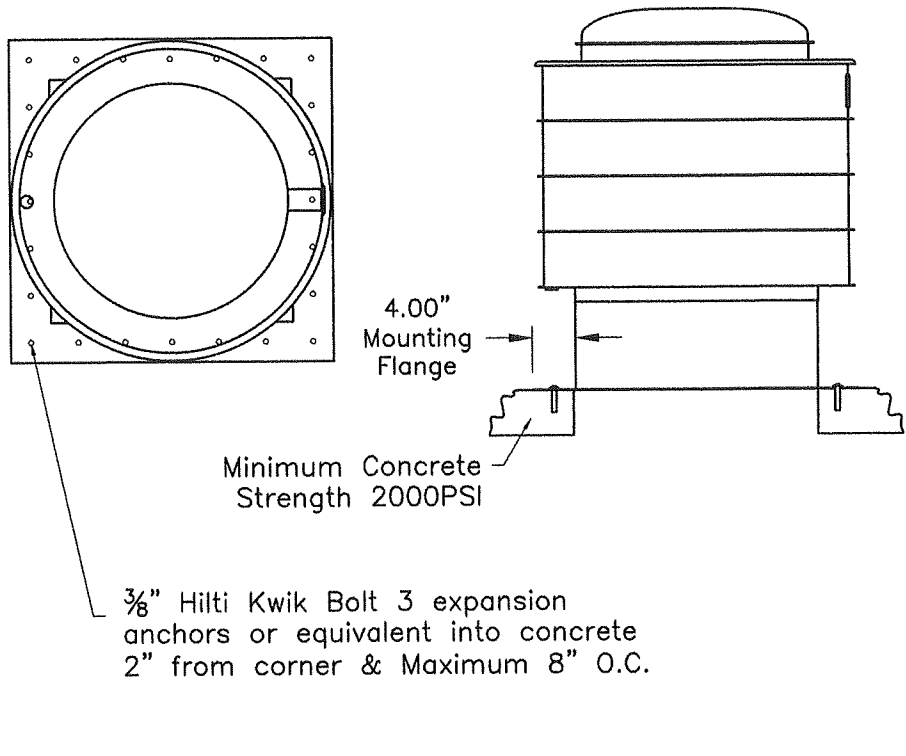
Wood Deck Installation



Elevation View

Plan View

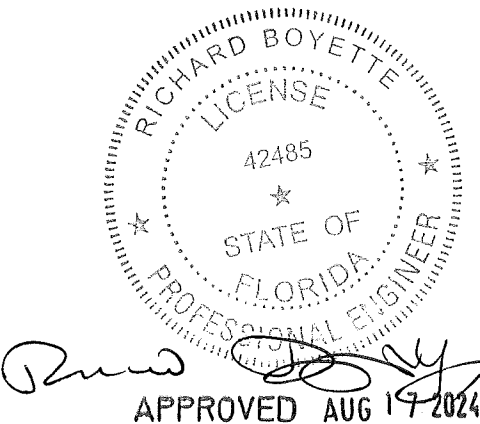
Metal Building Installation



Elevation View

Plan View

Concrete Deck Installation



PRODUCT REVISED
As complying with the Florida
Building Code
NOA-No. **24-0904.06**
Expiration Date: **01/13/2026**
By: *Manuel Perez*
Miami-Dade Product Control

Richard Boyette, FL PE #42485
Rick Boyette Consulting Inc - CoA #9707
4031 Coconut Blvd
Royal Palm Beach FL 33411
561-790-5766

Ⓑ

Model				Mounting Flange Dimensions	Installation Type / Bolt Count		
					Wood Deck	Metal Building	Concrete Deck
PDU080				21.5" x 21.5"	24	16	16
PDU100				21.5" x 21.5"	24	16	16
PDU110				21.5" x 21.5"	24	16	16
PDU120				27" x 27"	28	16	16
PDU135				27" x 27"	28	16	16
PDU150	PDU165			32" x 32"	32	20	20
PDU185	PDU200			36" x 36"	36	20	20
PNU080	PNU100			32" x 32"	36	20	20
PNU120	PNU135			32" x 32"	36	20	20
PNU150	PNU155	PNU160	PNU165	36" x 36"	40	20	20
PNU185	PNU200			36" x 36"	44	20	20
PNU235	PNU240	PNU245		42" x 42"	56	24	24
PNU290	PNU295	PNU300		48" x 48"	72	32	24

DWG NO. 686759 Sheet 6/11

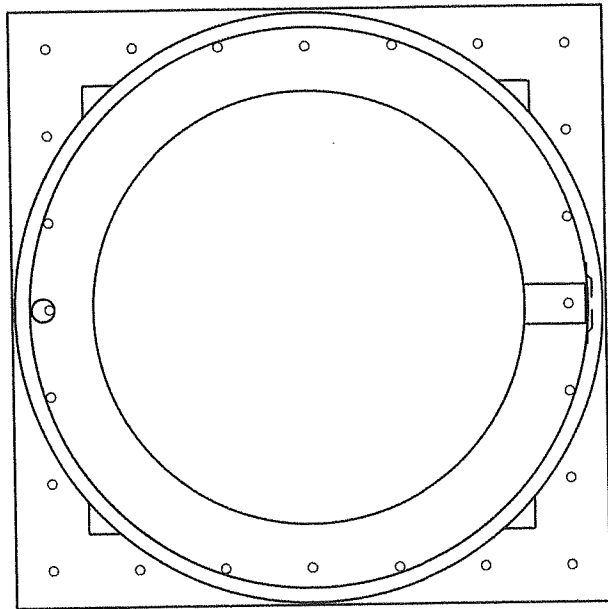
TITLE PDU - PNU Hurricane Fans

MAT'L
DRAFTER TCR DATE 04/12/10
DESIGN ENG. TCR 04/12/10 RELEASED
CHKD BY MFG. SCALE NTS

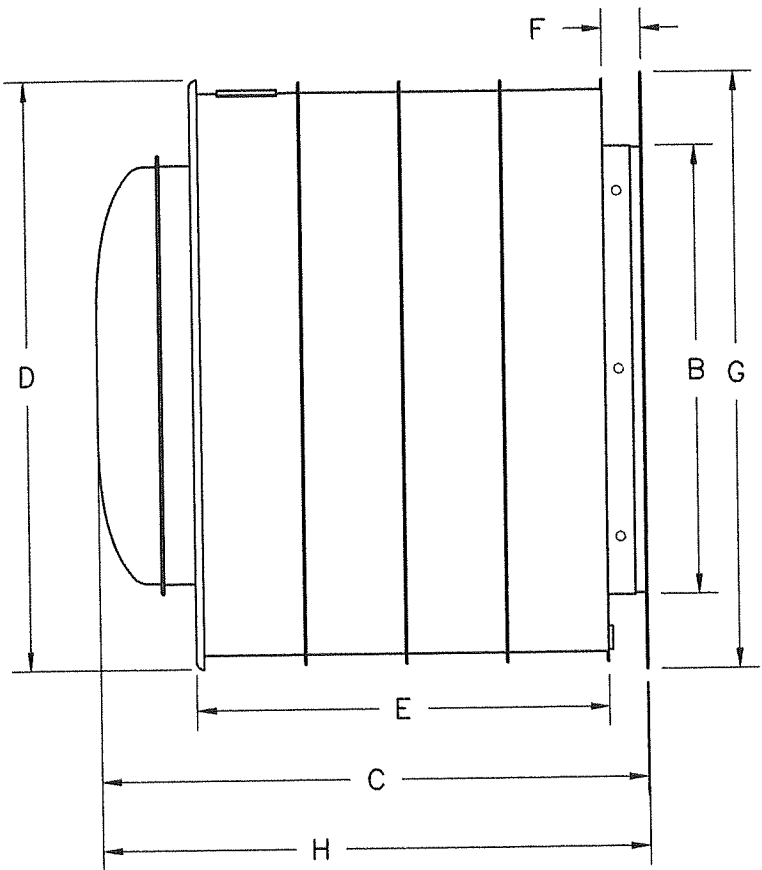
REV.	REVISION RECORD	BY	CKD.	DATE
B	UPDATED AND MERGED PNU NOMENCLATURE	BPF	TCR	4/8/11
C	REVISED FOR FLORIDA BUILDING CODE 2010	BPF	TCR	7/3/12
D	REVISED FOR 2014 FBC	TCR	TGB	5/28/15
E	REVISED FOR 42" HIGH CURBS	TCR	TGB	9/14/15
F	ADDED SHEETS 1 & 7 - 11 FOR WALL MOUNT	TCR	TGB	12/14/15
G	REVISED FOR 2017 FBC	MTJ	AS	4/16/18
H	REVISED FOR 2020 FBC	MTJ	AS	10/21/20
I	REVISED FOR 2023 FBC	MTJ	AS	8/16/24

Acme Engineering &
Manufacturing Corp.
1820 N. York Street
Muskogee, OK 74403
918-682-7791

Large Missile Impact Resistant
Max rated design pressure : +53.0 / -112.0 PSF



Elevation View – Installation



Dimensions (inches)

- Notes:
- a. This wall mount exhaust fan has been designed to comply with the 2023 FBC ASCE 7-22.
 - b. Wall structure must be designed to withstand the weight and loading transmitted by this exhaust fan.
 - c. This approval is for the structural capacity of the exterior housing only, it does not include any interior mechanism and/or electrical part.
 - d. This rooftop exhaust fan has not been tested for wind driven rain according to Florida Building Code, TAS 100(A).
 - e. All fasteners must be corrosion resistant.



Richard Boyette, FL PE #42485
Rick Boyette Consulting Inc – CoA #9707
4031 Coconut Blvd
Royal Palm Beach FL 33411
561-790-5766

PRODUCT REVISED
As complying with the Florida
Building Code
NOA-No. **24-0904.06**
Expiration Date: **01/13/2026**
By: *Manuel Perez*
Miami-Dade Product Control

Model		Fastener Count	Fan Dimensions (inches)								Weight
			A	B	C	D	E	F	G	H	
PDU080			8	13.50	13.31	20.63	12.84	2.25	21.50	56.66	25
PDU100			8	13.50	16.35	20.63	12.84	2.25	21.50	56.66	33
PDU110			8	13.50	16.66	20.63	12.84	2.25	21.50	56.66	33
PDU120			12	19.00	19.73	26.41	16.59	2.25	27.00	61.12	55
PDU135			12	19.00	21.12	26.41	16.59	2.25	27.00	61.12	55
PDU150	PDU165		12	24.00	24.14	30.16	21.92	2.25	32.00	64.14	83
PDU185	PDU200		16	28.00	26.00	34.65	21.99	2.25	36.00	66.00	103
PNU080	PNU100		12	24.00	26.60	33.66	22.13	2.25	32.00	67.60	111
PNU120	PNU135		12	24.00	27.62	33.66	22.13	2.25	32.00	67.60	111
PNU150	PNU155	PNU160	16	28.00	27.17	38.00	24.14	2.25	36.00	66.17	152
PNU185	PNU200		16	28.00	31.81	39.75	28.73	2.25	36.00	71.81	205
PNU235	PNU240	PNU245	20	34.00	36.50	44.75	31.50	2.25	42.00	76.50	232
PNU290	PNU295	PNU300	24	40.00	42.75	55.29	34.25	2.25	48.00	82.75	442

DWG NO. **686759** Sheet **7/11**

TITLE **PDU-PNU WALL MOUNT HURRICANE FANS**

MAT'L

DRAFTER **TCR** DATE **12/9/15**

DESIGN ENG. **TCR 12/9/15** RELEASED

CHKD BY MFG. SCALE **NTS**

REVISION RECORD		BY	CKD.	DATE
LET.				
F	ADDED SHEETS 1 & 7 – 11 FOR WALL MOUNT	TCR	TGB	12/14/15
G	REVISED FOR 2017 FBC	MTJ	AS	4/16/18
H	REVISED FOR 2020 FBC	MTJ	AS	10/21/20
I	REVISED FOR 2023 FBC	MTJ	AS	8/16/24

Acme Engineering &
Manufacturing Corp.
1820 N. York Street
Muskogee, OK 74403
918-682-7791

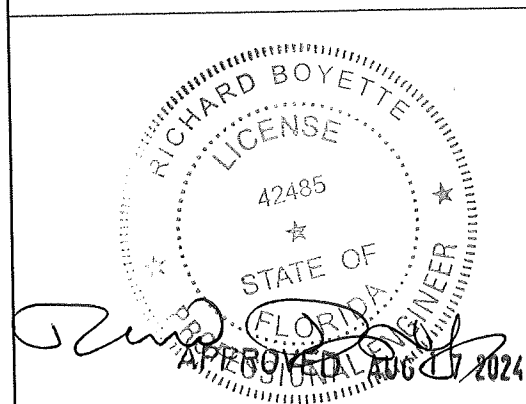
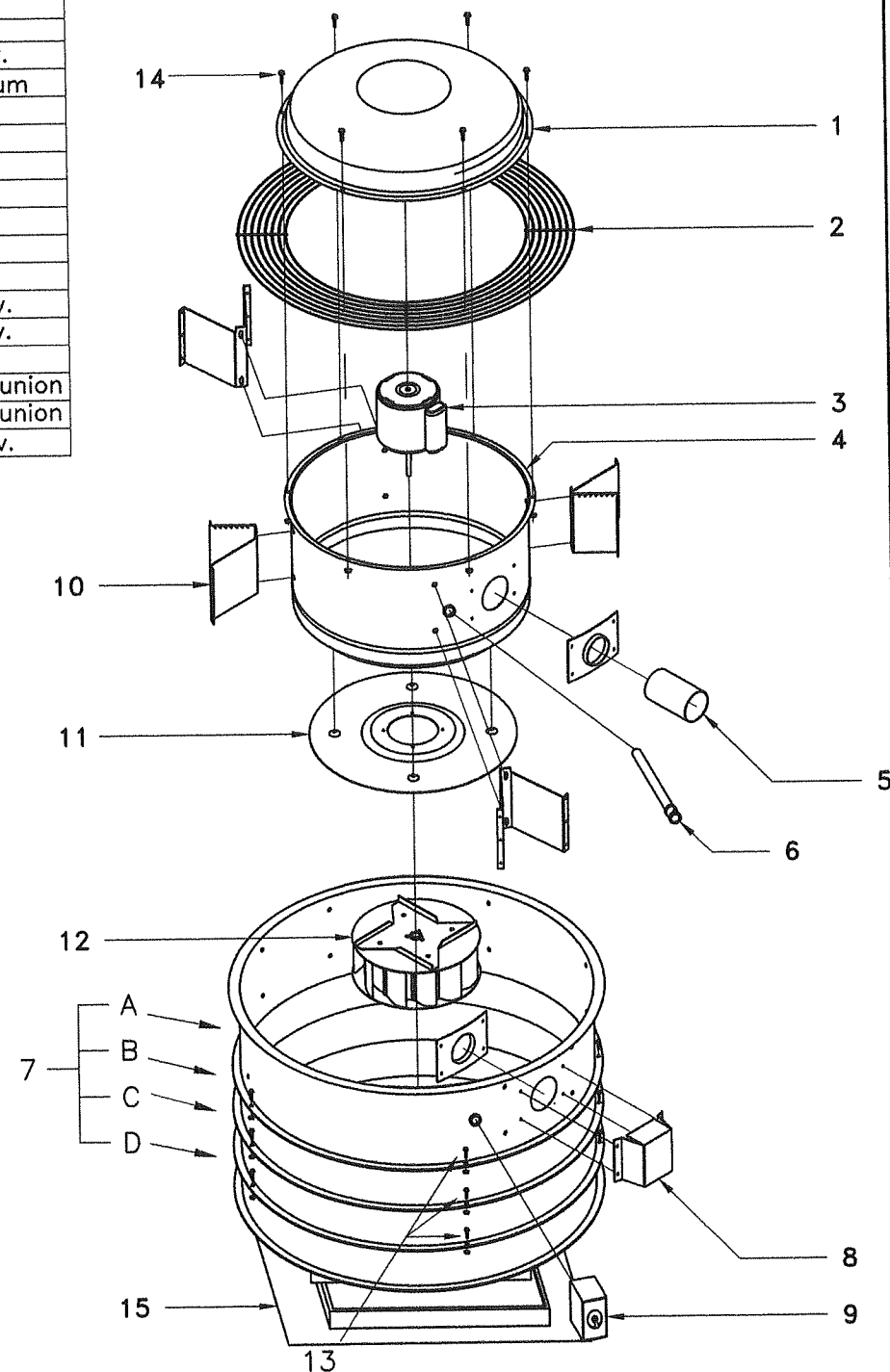
Item #	Qty.	Item	Size	80	100	110	120	135
1	1	Motor Enclosure Cover		.050" aluminum	.050" aluminum	.050" aluminum	.050" aluminum	.050" aluminum
2	1	Discharge Guard		.125" galv. wire	.125" galv. wire	.125" galv. wire	.125" galv. wire	.125" galv. wire
3	1	Motor						
4	1	Motor Enclosure		20 ga. G90 galv.	20 ga. G90 galv.	20 ga. G90 galv.	20 ga. G90 galv.	20 ga. G90 galv.
5	1	Breather Tube		.065" wall aluminum	.065" wall aluminum	.065" wall aluminum	.065" wall aluminum	.065" wall aluminum
6	1	Wiring Post						
7A	1	Upper Windband		.080" aluminum	.080" aluminum	.080" aluminum	.080" aluminum	.080" aluminum
7B	1	Middle Windband						
7C	1	Middle Windband						
7D	1	Lower Windband		.080" aluminum	.080" aluminum	.080" aluminum	.080" aluminum	.080" aluminum
8	1	Breather Tube Cover						
9	1	Disconnect Switch						
10	3	Support Bracket		14 ga. G90 galv.	14 ga. G90 galv.	14 ga. G90 galv.	14 ga. G90 galv.	14 ga. G90 galv.
11	1	Motor Enclosure Base		16 ga. G90 galv.	16 ga. G90 galv.	16 ga. G90 galv.	16 ga. G90 galv.	16 ga. G90 galv.
12	1	Impeller						
13	△	1/4"-20 Nuts and Bolts		6 bolts per flange union	6 bolts per flange union	6 bolts per flange union	6 bolts per flange union	6 bolts per flange union
14	△	1/4"-20 Nuts and Bolts		4 bolts per flange union	4 bolts per flange union	4 bolts per flange union	4 bolts per flange union	4 bolts per flange union
15	1	Wall Adapter Flange		14 ga. G90 galv.	14 ga. G90 galv.	14 ga. G90 galv.	14 ga. G90 galv.	14 ga. G90 galv.

Item #	Qty.	Item	Size	150	165	185	200
1	1	Motor Enclosure Cover		.050" aluminum	.050" aluminum	.050" aluminum	.050" aluminum
2	1	Discharge Guard		.125" galv. wire	.125" galv. wire	.125" galv. wire	.125" galv. wire
3	1	Motor					
4	1	Motor Enclosure		20 ga. G90 galv.	20 ga. G90 galv.	20 ga. G90 galv.	20 ga. G90 galv.
5	1	Breather Tube		.065" wall aluminum	.065" wall aluminum	.065" wall aluminum	.065" wall aluminum
6	1	Wiring Post					
7A	1	Upper Windband		.080" aluminum	.080" aluminum	.080" aluminum	.080" aluminum
7B	1	Middle Windband		.080" aluminum	.080" aluminum	.080" aluminum	.080" aluminum
7C	1	Middle Windband					
7D	1	Lower Windband		.080" aluminum	.080" aluminum	.080" aluminum	.080" aluminum
8	1	Breather Tube Cover		.063" aluminum	.063" aluminum	.063" aluminum	.063" aluminum
9	1	Disconnect Switch					
10	3	Support Bracket		14 ga. G90 galv.	14 ga. G90 galv.	14 ga. G90 galv.	14 ga. G90 galv.
11	1	Motor Enclosure Base		16 ga. G90 galv.	16 ga. G90 galv.	16 ga. G90 galv.	16 ga. G90 galv.
12	1	Impeller					
13	△	1/4"-20 Nuts and Bolts		7 bolts per flange union	7 bolts per flange union	7 bolts per flange union	7 bolts per flange union
14	△	1/4"-20 Nuts and Bolts		5 bolts per flange union	5 bolts per flange union	5 bolts per flange union	5 bolts per flange union
15	1	Wall Adapter Flange		14 ga. G90 galv.	14 ga. G90 galv.	14 ga. G90 galv.	14 ga. G90 galv.

* Steel material gages shown are nominal.
Aluminum thicknesses shown are nominal.
Actual thicknesses will vary in accordance
with industry standard tolerances.

PRODUCT REVISED
As complying with the Florida
Building Code
NOA-No. **24-0904.06**
Expiration Date: **01/13/2026**
By: *Manuel Perez*
Miami-Dade Product Control

PDU080 – PDU200 Fans



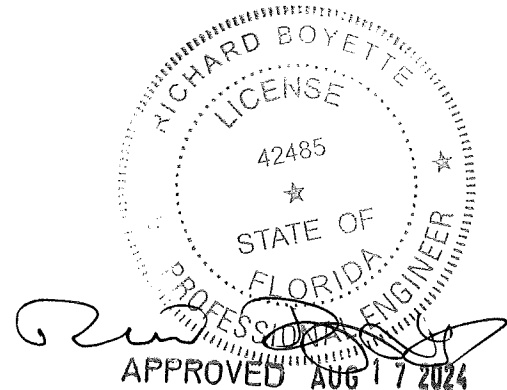
Richard Boyette, FL PE #42485
Rick Boyette Consulting Inc – CoA #9707
4031 Coconut Blvd
Royal Palm Beach FL 33411
561-790-5766

DWG NO.	686759	Sheet	8/11	LET.	REVISION RECORD	BY	CKD.	DATE
TITLE	PDU-PNU WALL MOUNT HURRICANE FANS			F	ADDED SHEETS 1 & 7 – 11 FOR WALL MOUNT	TCR	TGB	12/14/15
				G	REVISED FOR 2017 FBC	MTJ	AS	4/16/18
				H	REVISED FOR 2020 FBC	MTJ	AS	10/21/20
				I	REVISED FOR 2023 FBC	MTJ	AS	8/16/24
MAT'L								
DRAFTER	TCR	DATE	12/9/15					
DESIGN	TCR	12/9/15	RELEASED					
CHKD		MFG.	SCALE					
BY			NTS					

Acme Engineering &
Manufacturing Corp.
1820 N. York Street
Muskogee, OK 74403
918-682-7791

Item#	Qty.	Item	Size	235, 240, 245	290, 295, 300
1	1	Motor Enclosure Cover		.050" aluminum	.050" aluminum
2	1	Discharge Guard		.125" galv. wire	.177" galv. wire
3	1	Drive Base		12 ga. G90 galv.	10 ga. G90 galv.
4	1	Motor			
5	1	Breather Tube		.065" wall aluminum	.065" wall aluminum
6	1	Motor Enclosure Support		14 ga. G90 galv.	12 ga. G90 galv.
7	1	Motor Enclosure		20 ga. G90 galv.	20 ga. G90 galv.
8	1	Motor Enclosure Base		20 ga. G90 galv.	16 ga. G90 galv.
9	1	Impeller			
10	8	Support Channel		14 ga. G90 galv.	12 ga. G90 galv.
11	2	Corner Support			.063" aluminum
12	1	Breather Tube Cover		.063" aluminum	.063" aluminum
13 A	1	Upper Windband Assembly		.080" aluminum	.080" aluminum
13 B	1	Middle Windband Assembly		.080" aluminum	.080" aluminum
13 C	1	Middle Windband Assembly		.080" aluminum	.080" aluminum
13 D	1	Lower Windband Assembly		.080" aluminum	.080" aluminum
14	1	Drive Base		12 ga. G90 galv.	10 ga. G90 galv.
15	1	Shaft & Bearing Assembly			
16	2	Bearing Cap		10 ga. G90 galv.	10 ga. G90 galv.
17	24	1/4" - 20 Bolts & Nuts		8 per flange union	8 per flange union
18	6	1/4" - 20 Bolts & Nuts		6 per flange union	6 per flange union
19	1	Wall Adapter Flange		14 ga. G90 galv.	14 ga. G90 galv.

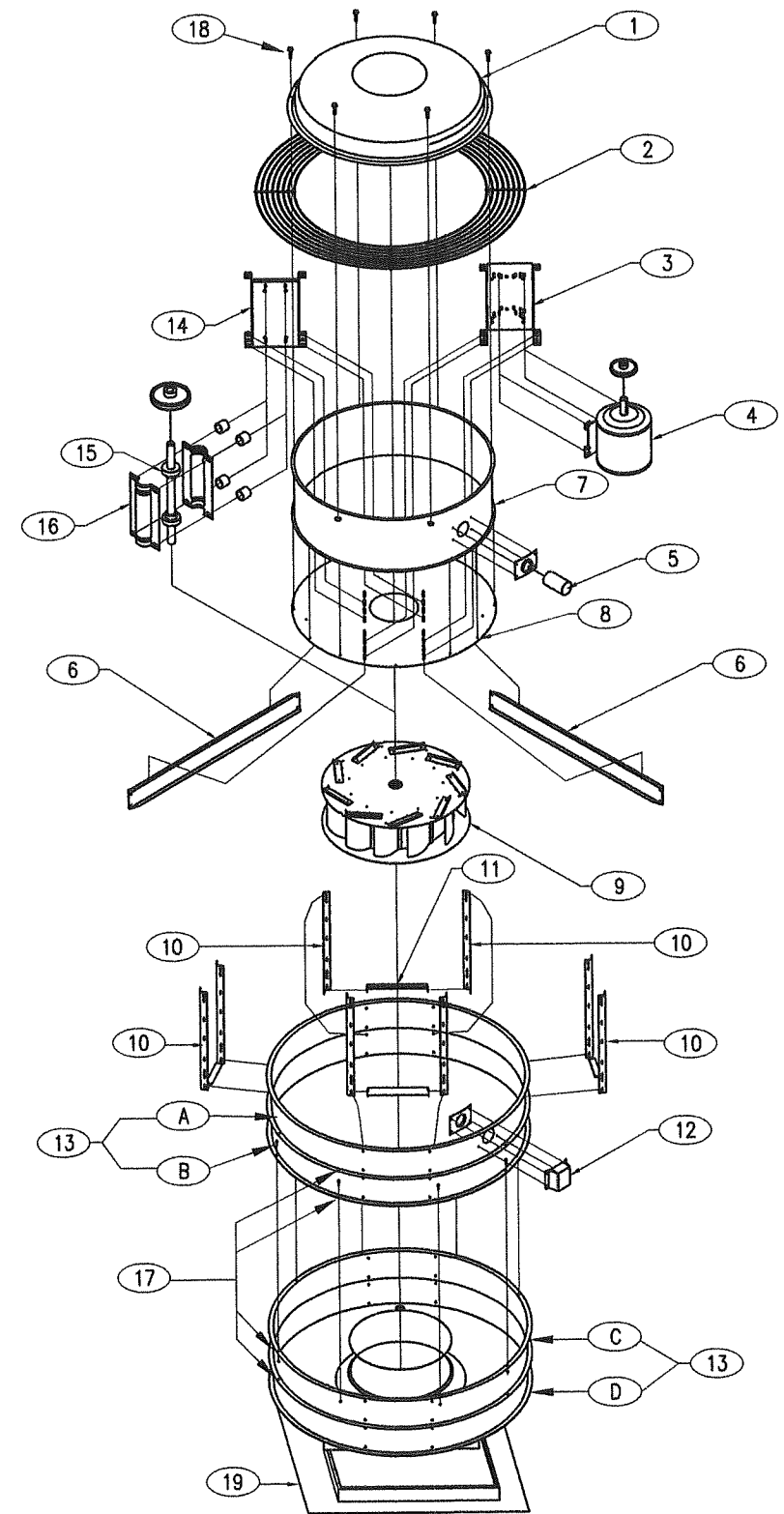
* Steel material gages shown are nominal.
Aluminum thicknesses shown are nominal.
Actual thicknesses will vary in accordance
with industry standard tolerances.



Richard Boyette, FL PE #42485
Rick Boyette Consulting Inc - CoA #9707
4031 Coconut Blvd
Royal Palm Beach FL 33411
561-790-5766

PRODUCT REVISED
As complying with the Florida
Building Code
NOA-No. **24-0904.06**
Expiration Date: **01/13/2026**
By: *Manuel Perez*
Miami-Dade Product Control

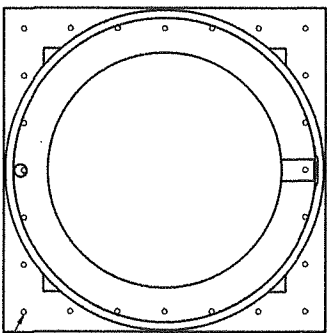
PNU235 - PNU300 Fans



DWG NO.	686759	Sheet 10/11	LET.	REVISION RECORD	BY	CKD.	DATE
TITLE	PDU-PNU WALL MOUNT HURRICANE FANS		F	ADDED SHEETS 1 & 7 - 11 FOR WALL MOUNT	TCR	TGB	12/14/15
MAT'L			G	REVISED FOR 2017 FBC	MTJ	AS	4/16/18
DRAFTER	TCR	DATE 12/9/15	H	REVISED FOR 2020 FBC	MTJ	AS	10/21/20
DESIGN ENG.	TCR 12/9/15	RELEASED	I	REVISED FOR 2023 FBC	MTJ	AS	8/16/24
CHKD BY	MFG.	SCALE NTS					

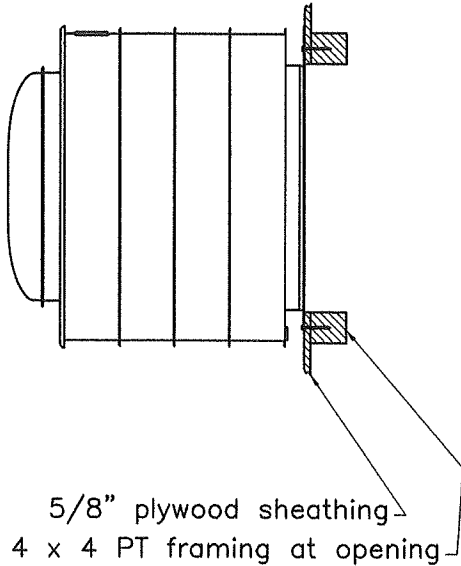
Acme Engineering &
Manufacturing Corp.
1820 N. York Street
Muskogee, OK 74403
918-682-7791

Large Missile Impact Resistant
Max rated design pressure : +53.0 / -112.0 PSF



#14 x 2" wood Screws
2" from corner & maximum
4" O.C. through plywood
and into 4 x 4 framing

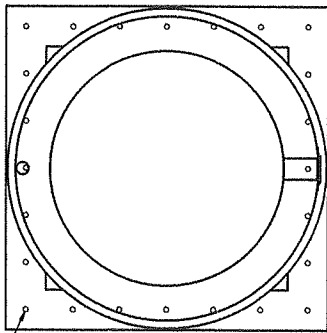
Elevation View



5/8" plywood sheathing
Min. 4 x 4 PT framing at opening

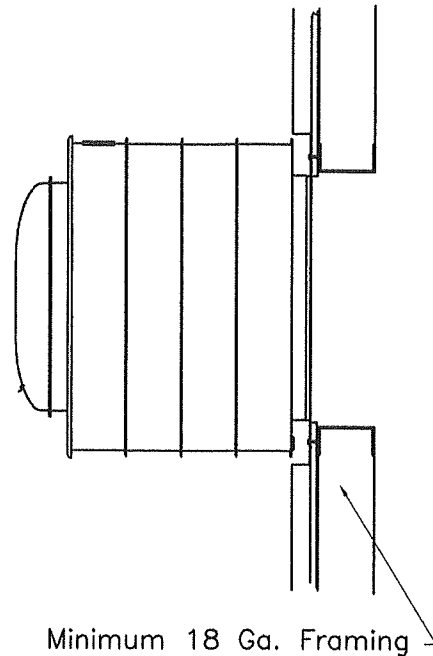
Plan View

Wood Wall Installation



1/4" Self-drilling Screws
2" from corner & maximum
8" O.C. through roof deck

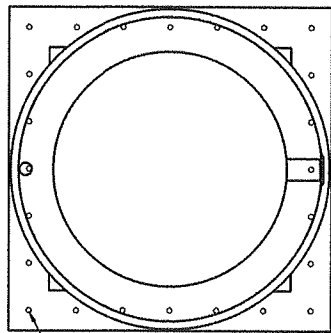
Elevation View



Minimum 18 Ga. Framing

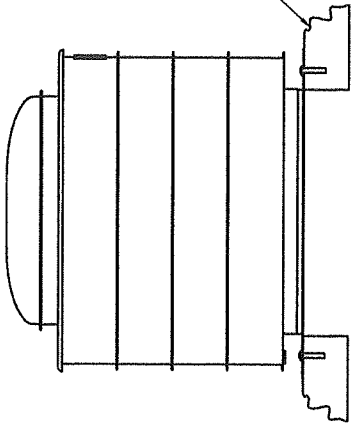
Plan View

Metal Wall Installation



3/8" Hilti Kwik Bolt 3 expansion
anchors or equivalent into concrete
2" from corner & Maximum 8" O.C.

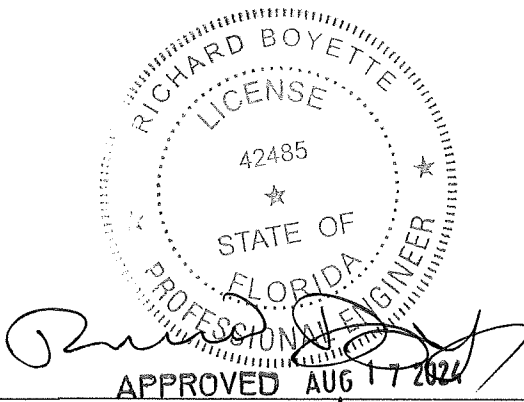
Elevation View



Minimum Concrete
Strength 2000PSI

Plan View

Concrete Wall Installation



PRODUCT REVISED
As complying with the Florida
Building Code
NOA-No. **24-0904.06**
Expiration Date: **01/13/2026**
By: *Manuel Perez*
Miami-Dade Product Control

Richard Boyette, FL PE #42485
Rick Boyette Consulting Inc - CoA #9707
4031 Coconut Blvd
Royal Palm Beach FL 33411
561-790-5766

Model				Mounting Flange Dimensions	Installation Type / Bolt Count		
					Wood Deck	Metal Building	Concrete Deck
PDU080				21.5" x 21.5"	20	16	16
PDU100				21.5" x 21.5"	20	16	16
PDU110				21.5" x 21.5"	20	16	16
PDU120				27" x 27"	24	16	16
PDU135				27" x 27"	24	16	16
PDU150	PDU165			32" x 32"	28	20	20
PDU185	PDU200			36" x 36"	32	20	20
PNU080	PNU100			32" x 32"	28	20	20
PNU120	PNU135			32" x 32"	28	20	20
PNU150	PNU155	PNU160	PNU165	36" x 36"	32	20	20
PNU185	PNU200			36" x 36"	32	20	20
PNU235	PNU240	PNU245		42" x 42"	40	24	24
PNU290	PNU295	PNU300		48" x 48"	54	32	24

DWG NO. 686759 Sheet 11/11

TITLE PDU-PNU WALL MOUNT HURRICANE FANS

MAT'L

DRAFTER TCR DATE 12/9/15

DESIGN TCR 12/9/15 RELEASED

CHKD BY MFG. SCALE NTS

LET.	REVISION RECORD	BY	CKD.	DATE
F	ADDED SHEETS 1 & 7-11 FOR WALL MOUNT	TCR	TGB	12/14/15
G	REVISED FOR 2017 FBC	MTJ	AS	4/16/18
H	REVISED FOR 2020 FBC	MTJ	AS	10/21/20
I	REVISED FOR 2023 FBC	MTJ	AS	8/16/24

Acme Engineering &
Manufacturing Corp.
1820 N. York Street
Muskogee, OK 74403
918-682-7791