



DEPARTMENT OF REGULATORY AND ECONOMIC RESOURCES (RER)
BOARD AND CODE ADMINISTRATION DIVISION

NOTICE OF ACCEPTANCE (NOA)

MIAMI-DADE COUNTY
PRODUCT CONTROL SECTION
11805 SW 26 Street, Room 208
Miami, Florida 33175-2474
T (786) 315-2590 F (786) 315-2599
www.miamidade.gov/economy

Ruskin Company
3900 Dr. Greaves Road
Grandview, MO 64030

SCOPE:

This NOA is being issued under the applicable rules and regulations governing the use of construction materials. The documentation submitted has been reviewed and accepted by Miami-Dade County RER-Product Control Section to be used in Miami-Dade County and other areas where allowed by the Authority Having Jurisdiction (AHJ).

This NOA shall not be valid after the expiration date stated below. The Miami-Dade County Product Control Section (In Miami-Dade County) and/or the AHJ (in areas other than Miami-Dade County) reserve the right to have this product or material tested for quality assurance purposes. If this product or material fails to perform in the accepted manner, the manufacturer will incur the expense of such testing and the AHJ may immediately revoke, modify, or suspend the use of such product or material within their jurisdiction. RER reserves the right to revoke this acceptance if it is determined by Miami-Dade County Product Control Section that this product or material fails to meet the requirements of the applicable building code.

This product is approved as described herein and has been designed to comply with the Florida Building Code, including the High Velocity Hurricane Zone.

DESCRIPTION: Model PHB6625D Aluminum Penthouse Louver System

APPROVAL DOCUMENT: Drawing No. **60-022015-00D**, titled "PHB6625D Penthouse", sheets 1 through 11 of 11, dated 08/01/2024, prepared by Ruskin Company, signed and sealed by Jeffrey D. Smith, P.E., bearing the Miami-Dade County Product Control renewal stamp with the Notice of Acceptance number and expiration date by the Miami-Dade County Product Control Section.

MISSILE IMPACT RATING: Large and Small Missile Impact Resistant

LABELING: A permanent label with the manufacturer's name or logo, Geneva, AL, model/series, and following statement: "Miami-Dade County Product Control Approved", is to be located on each unit.

RENEWAL of this NOA shall be considered after a renewal application has been filed and there has been no change in the applicable building code negatively affecting the performance of this product.

TERMINATION of this NOA will occur after the expiration date or if there has been a revision or change in the materials, use, and/ or manufacture of the product or process. Misuse of this NOA as an endorsement of any product, for sales, advertising or any other purposes shall automatically terminate this NOA. Failure to comply with any section of this NOA shall be cause for termination and removal of NOA.

ADVERTISEMENT: The NOA number preceded by the words Miami-Dade County, Florida, and followed by the expiration date may be displayed in advertising literature. If any portion of the NOA is displayed, then it shall be done in its entirety.

INSPECTION: A copy of this entire NOA shall be provided to the user by the manufacturer or its distributors and shall be available for inspection at the job site at the request of the Building Official.

This NOA **renews NOA # 23-1127.06** and consists of this page 1 and evidence pages E-1, E-2, E-3 and E-4, as well as approval document mentioned above.

The submitted documentation was reviewed by **Carlos M. Utrera, P.E.**




10/08/24

NOA-No. 24-0906.09
Expiration Date: November 20, 2029
Approval Date: October 17, 2024
Page 1

NOTICE OF ACCEPTANCE: EVIDENCE SUBMITTED

1. EVIDENCE SUBMITTED UNDER PREVIOUS NOA'S

A. DRAWINGS “Submitted under NOA # 15-0930.11”

1. Drawing No. **60-022015-00B**, titled “PHB6625D Penthouse”, sheets 1 through 13 of 13, dated 07/07/2006, with revision **H** dated 09/22/2015, prepared by Ruskin Company, signed and sealed by Chelsea GQ Welch, P.E.

B. TESTS “Submitted under NOA # 08-1003.05”

1. Test reports on 1) Uniform Static Air Pressure Test, Loading per FBC TAS 202-94
2) Large Missile Impact Test per FBC, TAS 201-94
3) Cyclic Wind Pressure Loading per FBC, TAS 203-94
along with marked-up drawings and installation diagram of Series/Model PHB6625D Penthouse, prepared by Architectural Testing, Inc., Test Report No. **73628.01-401-18**, dated 09/05/2007, signed and sealed by Joseph A. Reed, P.E.

C. CALCULATIONS “Submitted under NOA # 15-0930.11”

1. Wind load review prepared by Ruskin Company, dated 09/12/2015, signed and sealed by Chelsea GQ Welch, P.E.

“Submitted under NOA # 13-0730.04”
2. Head, jamb, sill and HHBS components moment of inertia and section modulus calculations prepared by Ruskin Company, dated 09/19/2013, signed and sealed by Daniel J. Rau, P.E.

“Submitted under NOA # 08-1003.05”
3. Anchorage, stress and deflection calculations, prepared by Ruskin Company, dated 09/12/2008, signed and sealed by Daniel J. Rau, P.E.

D. QUALITY ASSURANCE

1. Miami-Dade Department of Regulatory and Economic Resources (RER).

E. MATERIAL CERTIFICATIONS

1. None.

F. STATEMENTS “Submitted under NOA # 15-0930.11”

1. Statement letter of code conformance to the 5th edition (2014) FBC issued by Ruskin Company, dated 09/22/2015, signed and sealed by Chelsea GQ Welch, P.E.

“Submitted under NOA # 13-0521.07”
2. Statement letter of code conformance to 2010 FBC issued by Ruskin Company, dated 05/10/2013, signed and sealed by Daniel J. Rau, P.E.
3. No financial interest letter issued by Ruskin Company, dated 05/10/2013, signed and sealed by Daniel J. Rau, P.E.



Carlos M. Utrera, P.E.

Product Control Examiner

NOA-No. 24-0906.09

Expiration Date: November 20, 2029

Approval Date: October 17, 2024

NOTICE OF ACCEPTANCE: EVIDENCE SUBMITTED

2. EVIDENCE SUBMITTED UNDER NOA # 18-1025.03

A. DRAWINGS

1. Drawing No. **60-022015-00D**, titled “PHB6625D Penthouse”, sheets 1 through 11 of 11, dated 07/07/2006, with revision **J** dated 12/04/2017, prepared by Ruskin Company, signed and sealed by Melissa M. Massar, P.E. on 08/08/2018.

B. TESTS

1. None.

C. CALCULATIONS

1. Wind load review prepared by Ruskin Company, dated 08/18/2018, signed and sealed by Melissa M. Massar, P.E.

D. QUALITY ASSURANCE

1. Miami-Dade Department of Regulatory and Economic Resources (RER).

E. MATERIAL CERTIFICATIONS

1. None.

F. STATEMENTS

1. Statement letter of code conformance to the 6th edition (2017) FBC issued by Ruskin Company, dated 08/18/2018, signed and sealed by Melissa M. Massar, P.E.
2. Testing contract letter issued by National Certified Testing Laboratories, dated 03/20/2018 and signed by Christopher Bennett.



Carlos M. Utrera, P.E.
Product Control Examiner
NOA-No. 24-0906.09
Expiration Date: November 20, 2029
Approval Date: October 17, 2024

NOTICE OF ACCEPTANCE: EVIDENCE SUBMITTED

3. EVIDENCE SUBMITTED UNDER NOA # 19-1022.07

A. DRAWINGS

1. None.

B. TESTS

1. Test reports on 1) Uniform Static Air Pressure Test, Loading per FBC TAS 202-94
2) Large Missile Impact Test per FBC, TAS 201-94
3) Cyclic Wind Pressure Loading per FBC, TAS 203-94
along with marked-up drawings and installation diagram of Series/Model PHB6625D Penthouse, prepared by National Certified Testing Laboratories, Test Report No. **NCTL-210-4144-01**, dated 04/16/2019, signed and sealed by Douglas J. McDougall, P.E.

C. CALCULATIONS

1. None.

D. QUALITY ASSURANCE

1. Miami-Dade Department of Regulatory and Economic Resources (RER).

E. MATERIAL CERTIFICATIONS

1. None.

F. STATEMENTS

1. Statement letter of code conformance to the 6th edition (2017) FBC issued by Ruskin Company, dated 09/11/2019, signed and sealed by Melissa M. Massar, P.E.



Carlos M. Utrera, P.E.
Product Control Examiner
NOA-No. 24-0906.09
Expiration Date: November 20, 2029
Approval Date: October 17, 2024

NOTICE OF ACCEPTANCE: EVIDENCE SUBMITTED

4. EVIDENCE SUBMITTED UNDER NOA # 23-1127.06 AND NEW

A. DRAWINGS

1. Drawing No. **60-022015-00D**, titled “PHB6625D Penthouse”, sheets 1 through 11 of 11, dated 08/01/2024, prepared by Ruskin Company, signed and sealed by Jeffrey D. Smith, P.E.

B. TESTS

1. None.

C. CALCULATIONS

1. None.

D. QUALITY ASSURANCE

1. Miami-Dade Department of Regulatory and Economic Resources (RER).

E. MATERIAL CERTIFICATIONS

1. None.

F. STATEMENTS

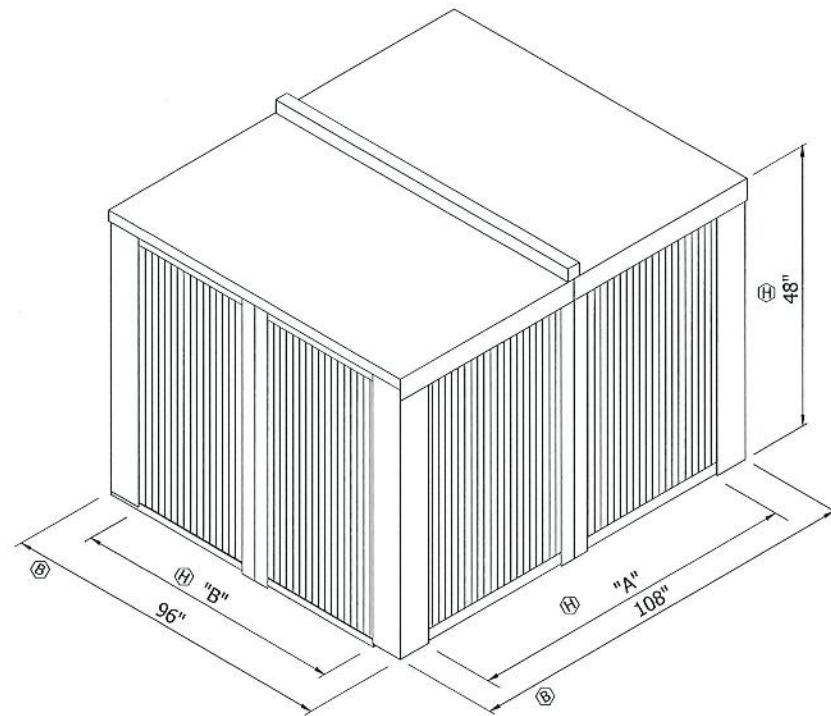
1. Statement letter of code conformance to the 8th edition (2023) of the FBC, issued by Ruskin Company, dated 07/31/2024, signed and sealed by Jeffrey D. Smith, P.E.
2. Statement letter of no financial interest, issued by Ruskin Company, dated 08/01/2024, signed and sealed by Jeffrey D. Smith, P.E.

“Submittal under NOA # 23-1127.06”

3. Statement letter of code conformance to the 8th edition (2023) of the FBC, issued by Ruskin Company, dated 11/21/2023, signed and sealed by Jeffrey D. Smith, P.E.

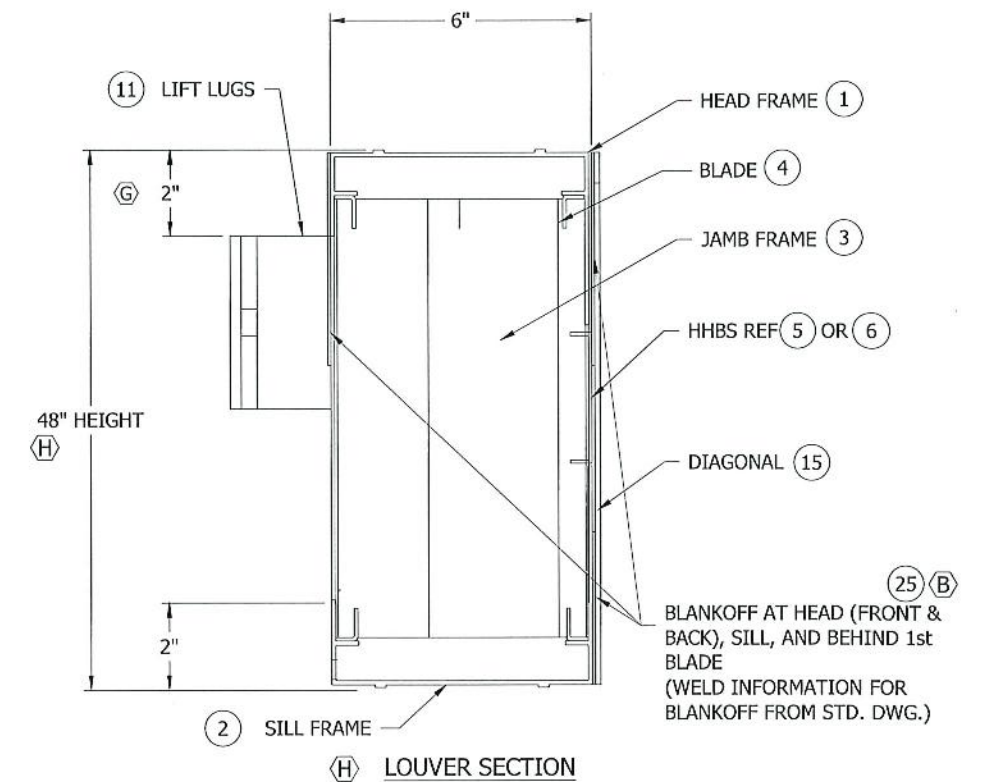


Carlos M. Utrera, P.E.
Product Control Examiner
NOA-No. 24-0906.09
Expiration Date: November 20, 2029
Approval Date: October 17, 2024

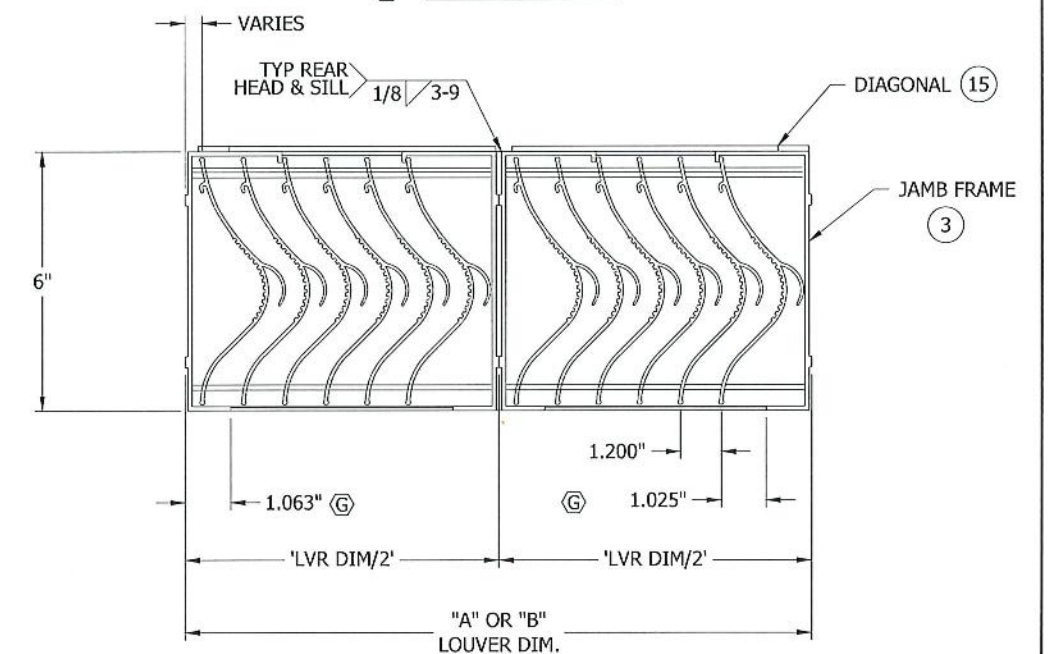


PENTHOUSE ISOMETRIC

FRAME
6063-T6 extruded aluminum with .095" nominal wall thickness. (G)
BLADES
(H) 6063-T6 extruded aluminum with .080" nominal wall thickness.
ROOF
.125 thick formed aluminum panels
SILL
.125" thick formed aluminum
FINISH
(H) Mill



LOUVER SECTION



LOUVER PLANVIEW

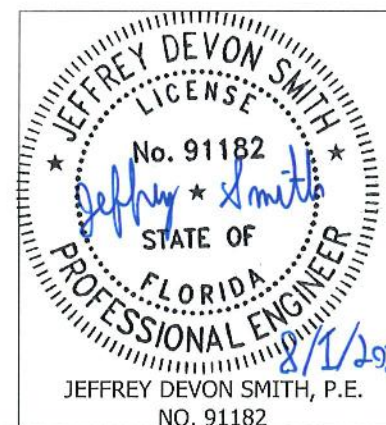
NOTES: (H)

- 1) THE PHB6625D HAS BEEN TESTED IN ACCORDANCE WITH FLORIDA PROTOCOLS TAS-201, 202 & 203 FOR LARGE MISSILE IMPACT, UNIFORM PRESSURE AND CYCLIC WIND PRESSURE.
- 2) THIS PENTHOUSE SYSTEM IS APPROVED FOR APPLICATIONS WITH DESIGN PRESSURES OF +/- 110 PSF OR LESS.
- 3) IT SHALL BE THE RESPONSIBILITY OF THE PERMIT HOLDER/BUILDING DESIGN ENGINEER OF RECORD TO VERIFY THE STRUCTURAL INTEGRITY OF THE ROOF CURB/STRUCTURE TO SUPPORT THE LOADS IMPOSED BY THIS PENTHOUSE SYSTEM.
- 4) 'A'+12" AND 'B'+12" ARE THE OUTSIDE DIMENSIONS OF THE PENTHOUSE SIDES. 'A' AND 'B' ARE THE INSIDE DIMENSIONS OF THE CURB.
- 5) THE MAXIMUM OUTSIDE DIMENSIONS OF THE PENTHOUSE ARE 96"x108"x48" TALL AS INDICATED ON THESE DRAWINGS. THE MINIMUM OUTSIDE DIMENSIONS OF THE PENTHOUSE ARE 24"x24"x12" TALL.
- 6) SEALING REQUIREMENTS AROUND THE PENTHOUSE SHALL COMPLY WITH THE PROVISIONS OF CHAPTER 15 OF THE FLORIDA BUILDING CODE.
- 7) ALL FASTENERS SHALL BE CORROSION RESISTANT.

NOTE:
REF SHEET 6 FOR DESCRIPTION OF LINE ITEMS (G)

FOR OFFICE USE ONLY

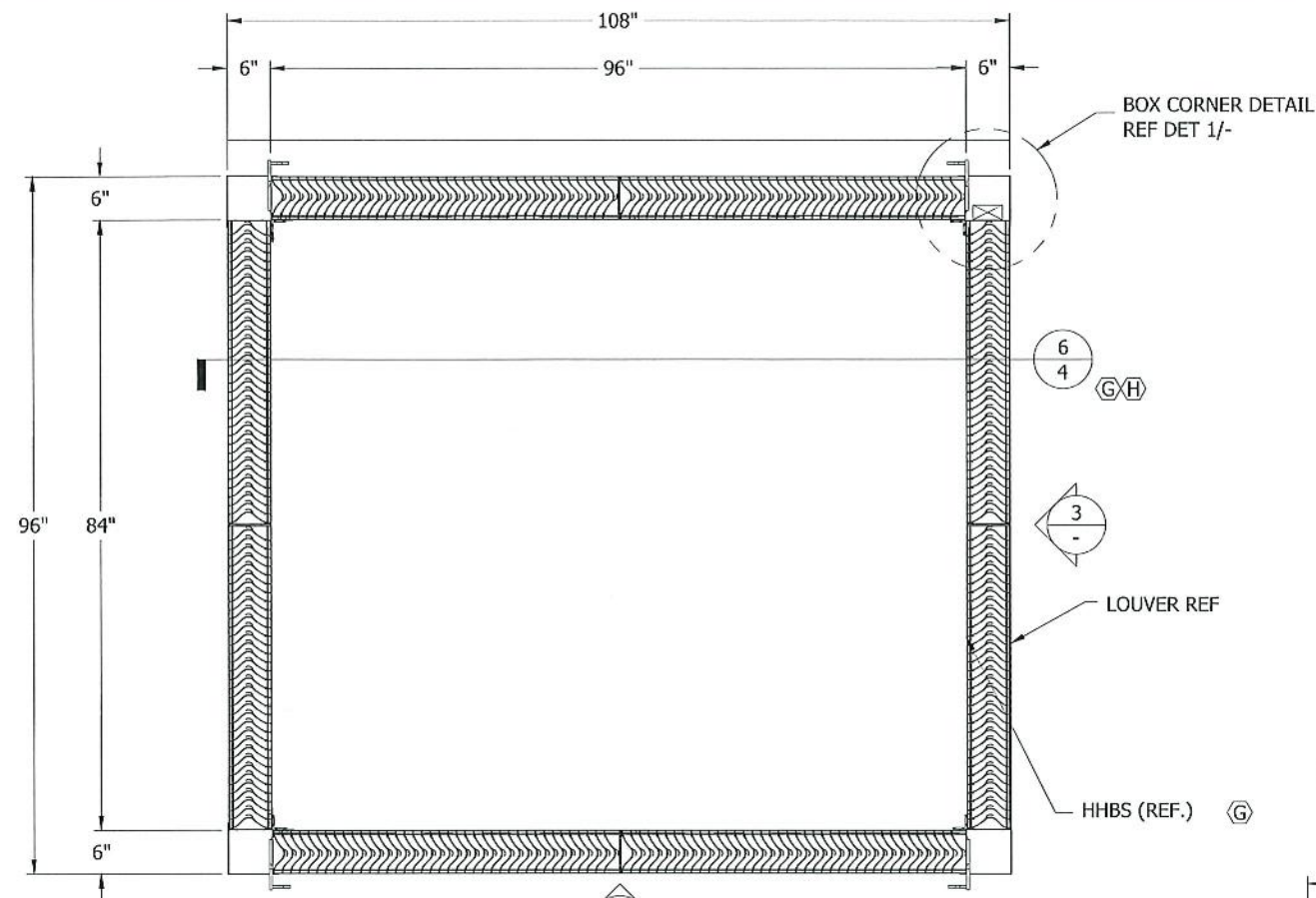
PRODUCT RENEWED
as complying with the Florida
Building Code
NOA-No. 24-0906.09
Expiration Date 11/20/2029
By *[Signature]*
Miami-Dade Product Control



DATE: 6/26/6	WRT: WRT	DATE: 7/7/6	CHK: DJR	DATE: 7/7/6	APPRD: DJR	DATE: 7/7/6	APPRD: DJR	DATE: 7/7/6
--------------	----------	-------------	----------	-------------	------------	-------------	------------	-------------

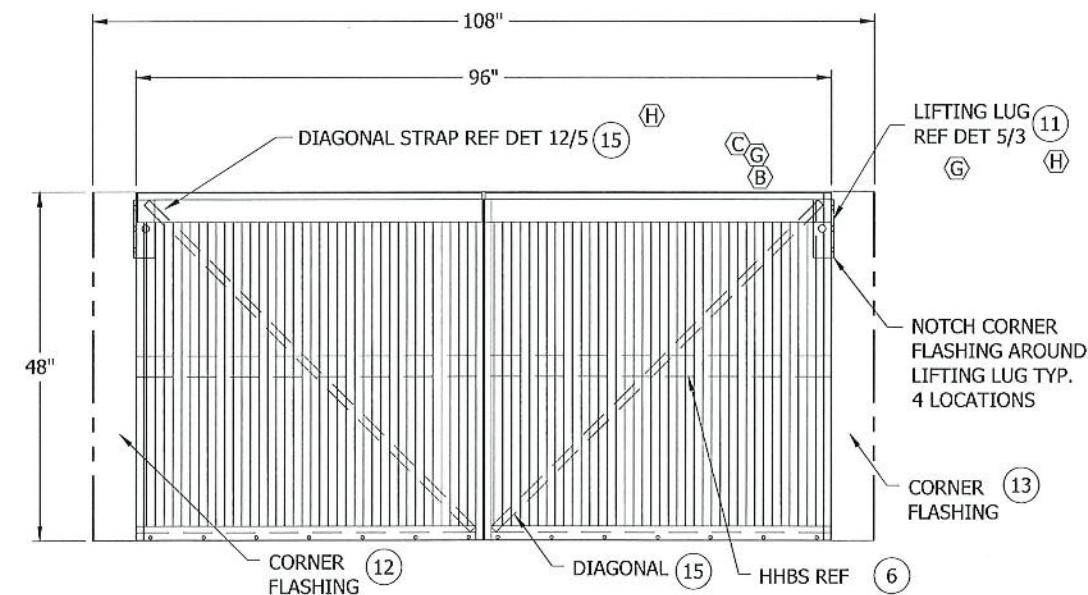
SHEET 1 OF 11

(K)	REV'D ENGINEER OF RECORD & THICKNESS OF ITEMS 17 & 22.	NS	JDS	JDS	-	
(J)	REMOVED SHT 12-13, REORGANIZED PARTS CHANGE OF ENG. OF RECORD	CJD	SDL	MMM	-	12/4/17
(H)	GENERAL REVISIONS	DLB	KJM	NLT	CGW	9/22/15
(G)	GENERAL REVISIONS	DRP	RKP	DJR		7/19/13
(F)	REVISED SILL PART NUMBER (SHEET 6) & SILL FRAME (SHEET 7)	DRP	RKP	DJR		5/10/13
CHANGE LETTER	REVISION DESCRIPTION	CIVIL BY:	CHCD BY:	APPRD BY:	APPRD BY:	DATE
RUSKIN AUTHORITY IN AIR CONTROL		3900 DR. GREAVES RD. GRANDVIEW, MO 64030		NONE		
TITLE PHB6625D PENTHOUSE SPECS, NOTES AND DETAILS		PLOT SCALE NONE		ECN		
		DWG. NO.		60-022015-00D		



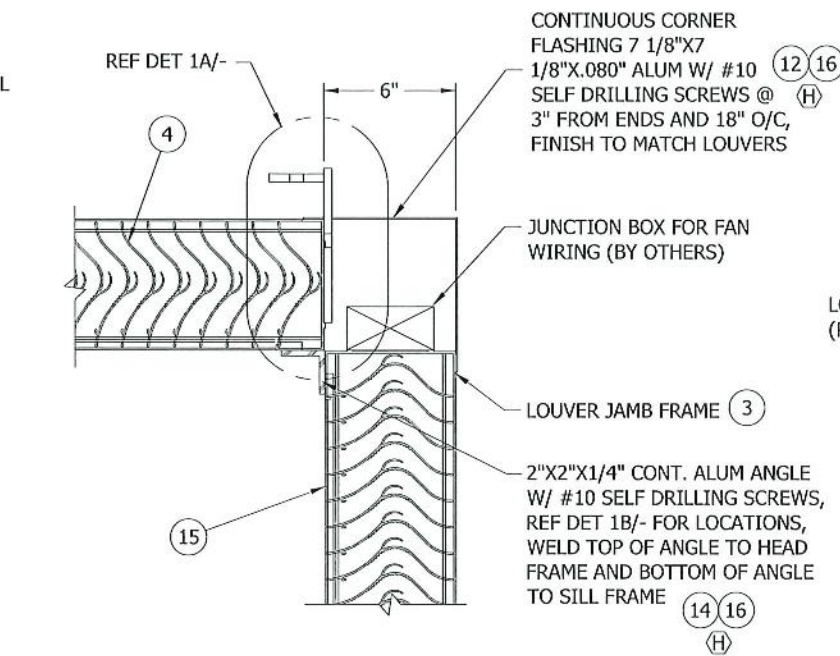
ASSEMBLY "A"

N.T.S.
HEIGHT = 48" (G/H)



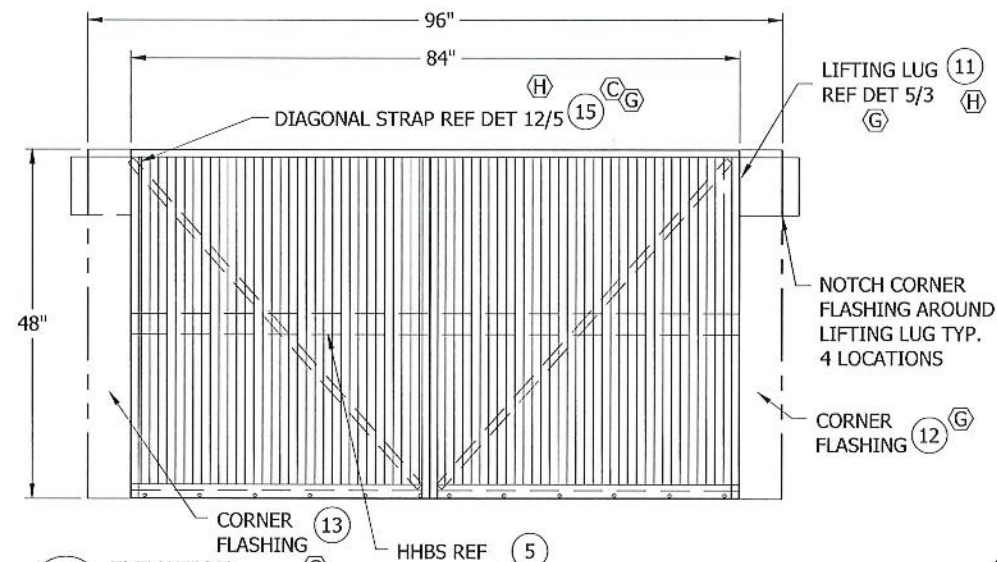
2
-
ELEVATION
N.T.S.

NOTE:
REF SHEET 6 FOR DESCRIPTION OF LINE ITEMS (G)

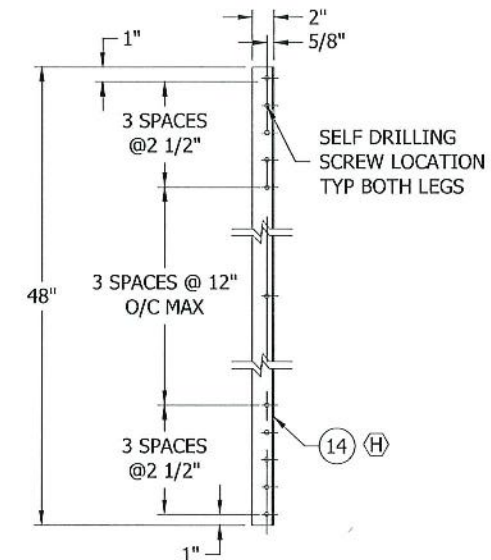


1
-
BOX CORNER DETAIL
N.T.S.

1A
-
LOUVER/CORNER FLASHING DETAIL
N.T.S.



3
-
ELEVATION
N.T.S.

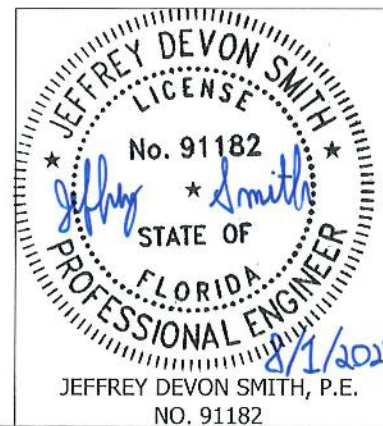


1B
-
ITEM 14 - LOUVER CORNER ANGLE
N.T.S.

FOR OFFICE USE ONLY


PRODUCT RENEWED
as complying with the Florida
Building Code
NOA-No. 24-0906.09
Expiration Date 11/20/2029

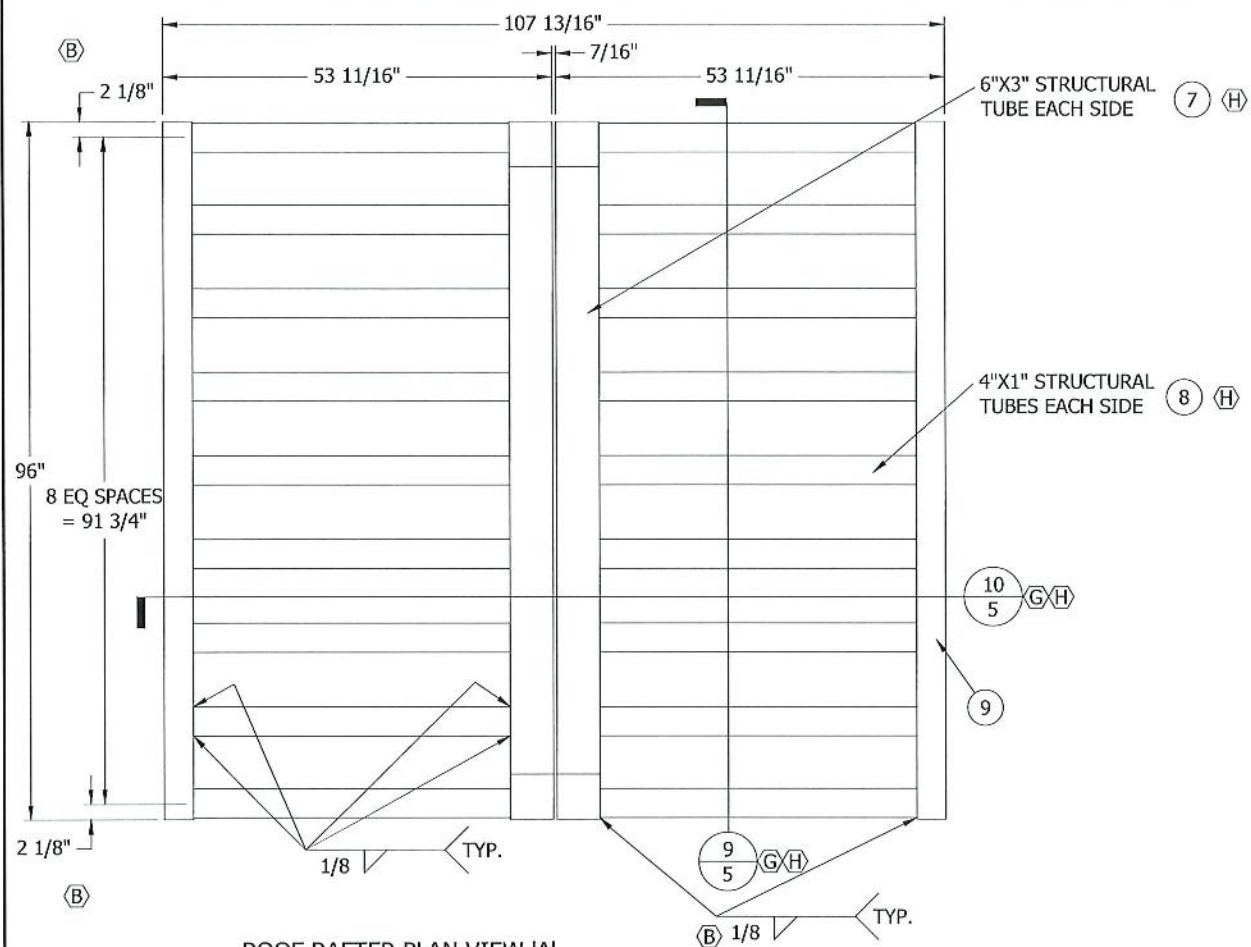
By *[Signature]*
Miami-Dade Product Control



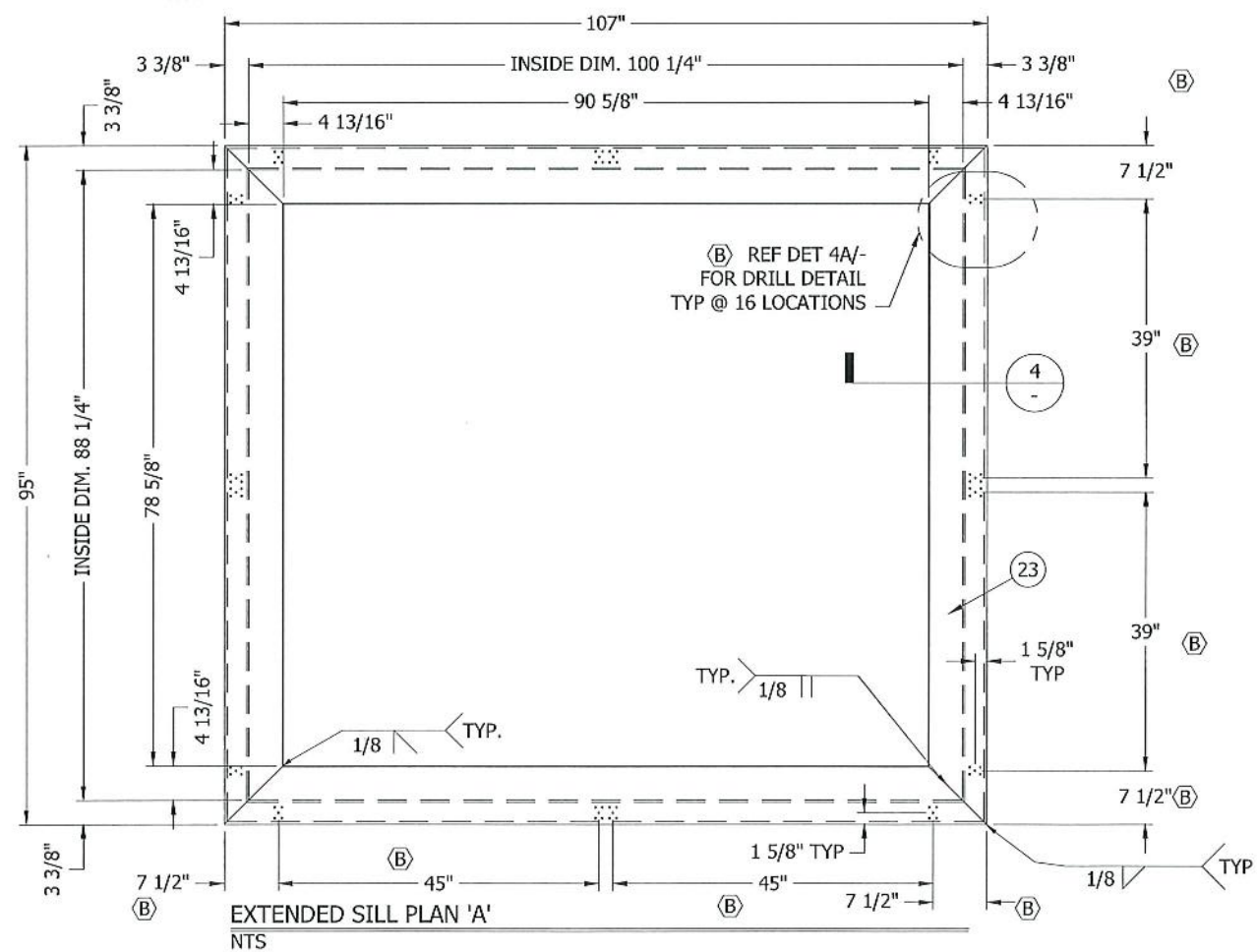
DATE	WRT	CHK	BY	DATE	APP'D	BY	DATE	APP'D	BY	DATE
6/26/6	WRT	DJR	DJR	7/7/6	DJR	DJR	7/7/6			

SHEET 2 OF 11

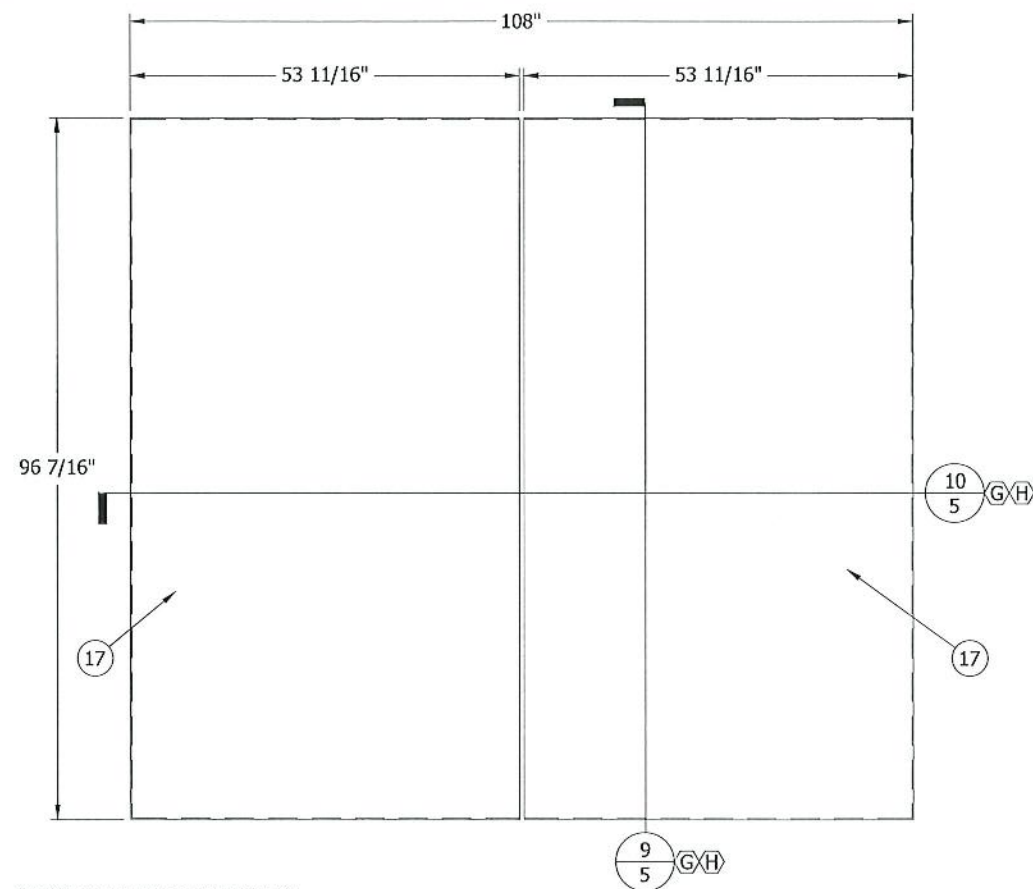
(K)	REV'D ENGINEER OF RECORD & THICKNESS OF ITEMS 17 & 22.	NS	JDS	JDS	-	
(J)	REMOVED SHT 12-13, REORGANIZED PARTS CHANGE OF ENG. OF RECORD	CJD	SDL	MMM	-	12/4/17
(H)	GENERAL REVISIONS	DLB	KJM	NLT	CGW	9/22/15
(G)	GENERAL REVISIONS	DRP	RKP	DJR		7/19/13
(F)	REVISED SILL PART NUMBER (SHEET 6) & SILL FRAME (SHEET 7)	DRP	RKP	DJR		5/10/13
(C)	ADDED DIAGONAL	DWS	DJR	DJR		9/12/2008
CHANGE LETTER	REVISION DESCRIPTION	DWG. BY:	CHKD. BY:	APP'D. BY:	APP'D. BY:	DATE
 3900 DR. GRAEVES RD GRANDVIEW, MO 64039 AUTHORITY IN AIR CONTROL		PLOT SCALE		ECN		
		NONE				
TITLE		DWG. NO.				
PHB6625D PENTHOUSE DETAILS		60-022015-00D				



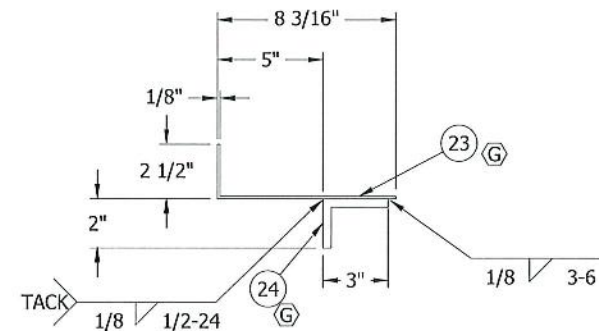
ROOF RAFTER PLAN VIEW 'A'
NTS



EXTENDED SILL PLAN 'A'
NTS

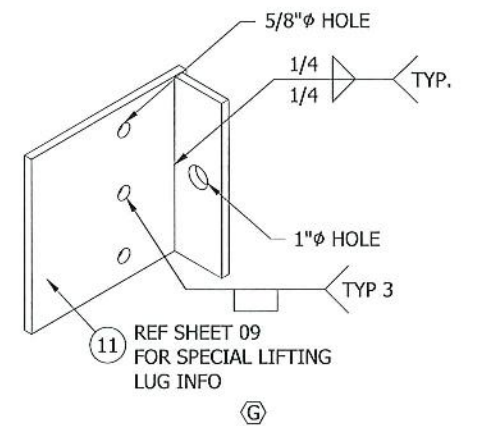


ROOF SKIN PLAN VIEW 'A'
NTS

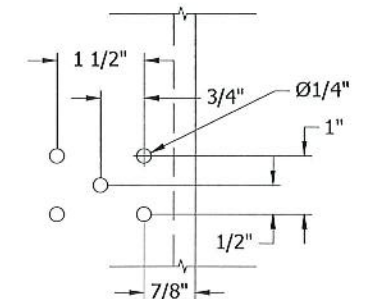


ITEMS 23 & 24 - EXTENDED SILL
NTS
MAT'L: .125\"/>

NOTE:
REF SHEET 6 FOR DESCRIPTION OF LINE ITEMS



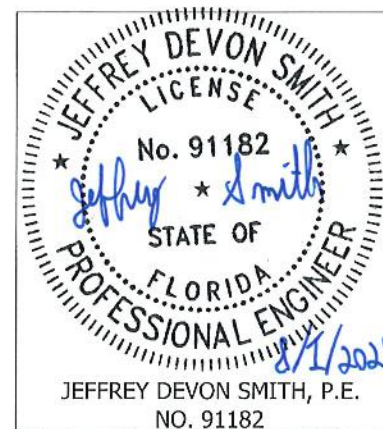
SPECIAL LIFTING LUG
NTS
MAT'L: .375\"/>



EXTENDED SILL DRILL DETAIL
NTS

FOR OFFICE USE ONLY

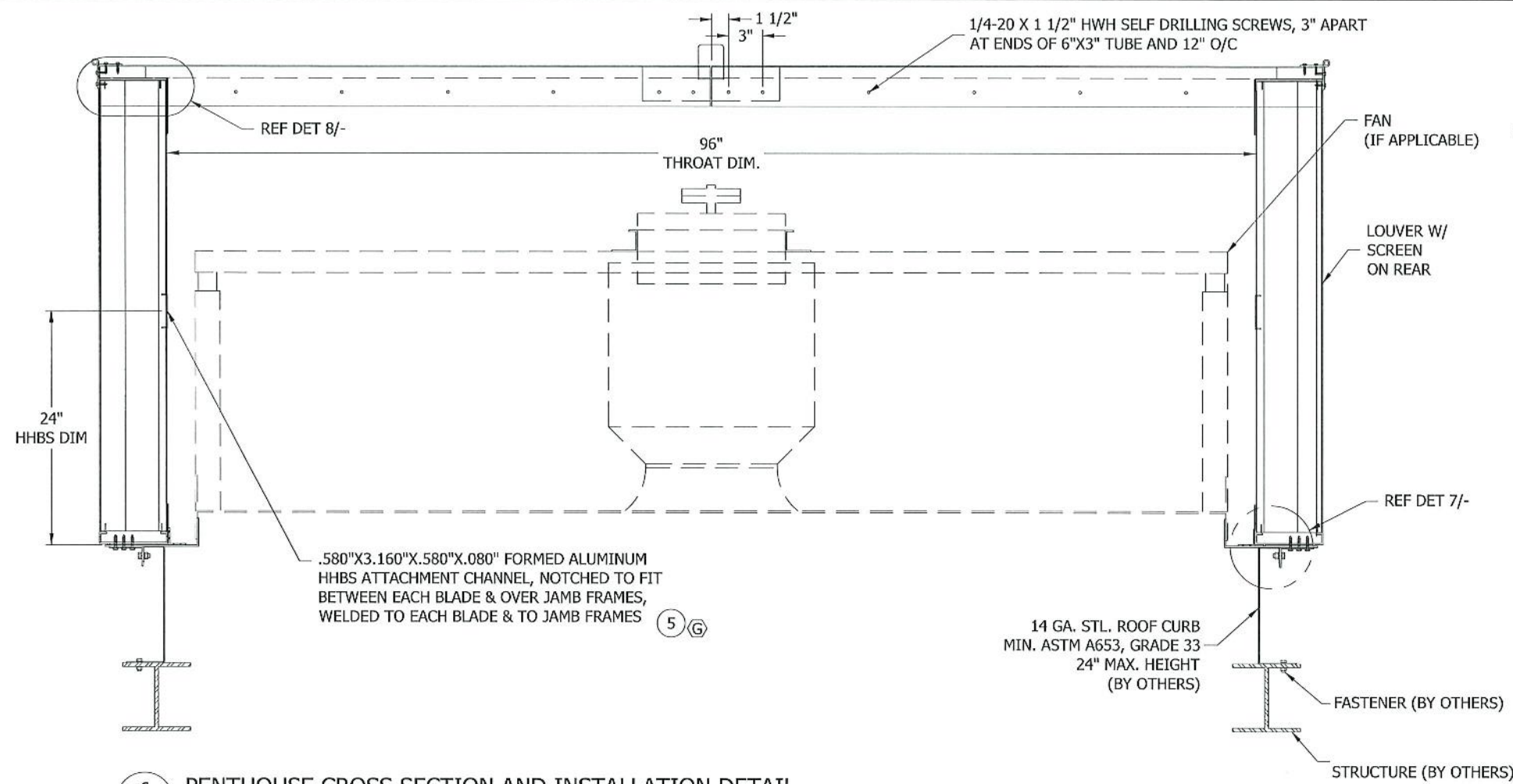
PRODUCT RENEWED
as complying with the Florida
Building Code
NOA-No. 24-0906.09
Expiration Date 11/20/2029
By *[Signature]*
Miami-Dade Product Control



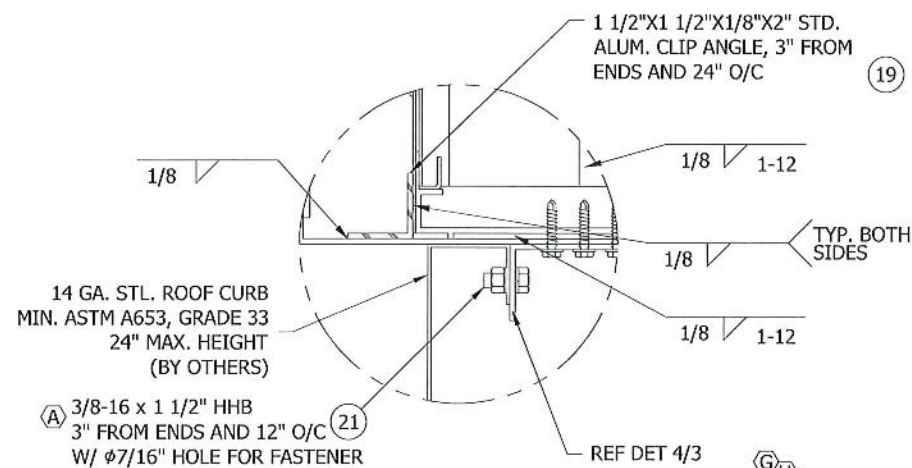
JEFFREY DEVON SMITH, P.E.
NO. 91182

SHEET 3 OF 11

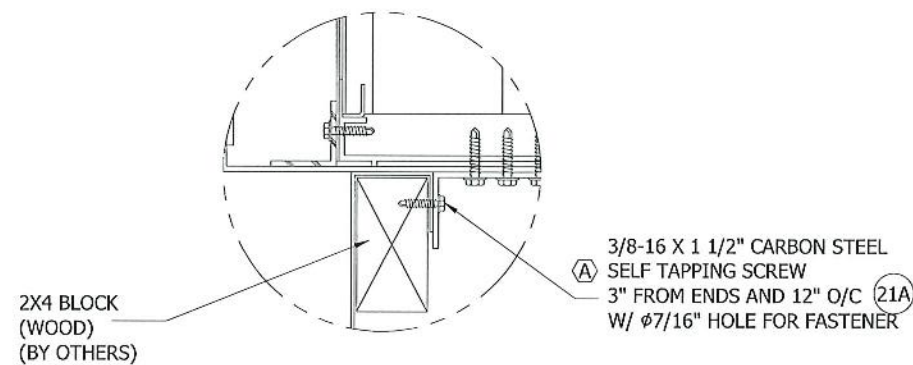
CHANGE LETTER	REVISION DESCRIPTION	DRAWN BY:	CHK'D BY:	APPRO'D BY:	DATE
(K)	REV'D ENGINEER OF RECORD & THICKNESS OF ITEMS 17 & 22.	NS	JDS	JDS	-
(J)	REMOVED SHT 12-13, REORGANIZED PARTS CHANGE OF ENG. OF RECORD	CJD	SDL	MMM	12/4/17
(H)	GENERAL REVISIONS	DLB	KJM	NLT	CGW 9/22/15
(G)	GENERAL REVISIONS	DRP	RKP	DJR	7/19/13
(F)	REVISED SILL PART NUMBER (SHEET 6) & SILL FRAME (SHEET 7)	DRP	RKP	DJR	5/10/13
(D)	REV'D TITLE BLOCK	DWS	DJR	DJR	9/12/2008
TITLE		PLOT SCALE		DATE	
PHB6625D PENTHOUSE DETAILS		NONE		ECN	
DWG. NO.		60-022015-00D			



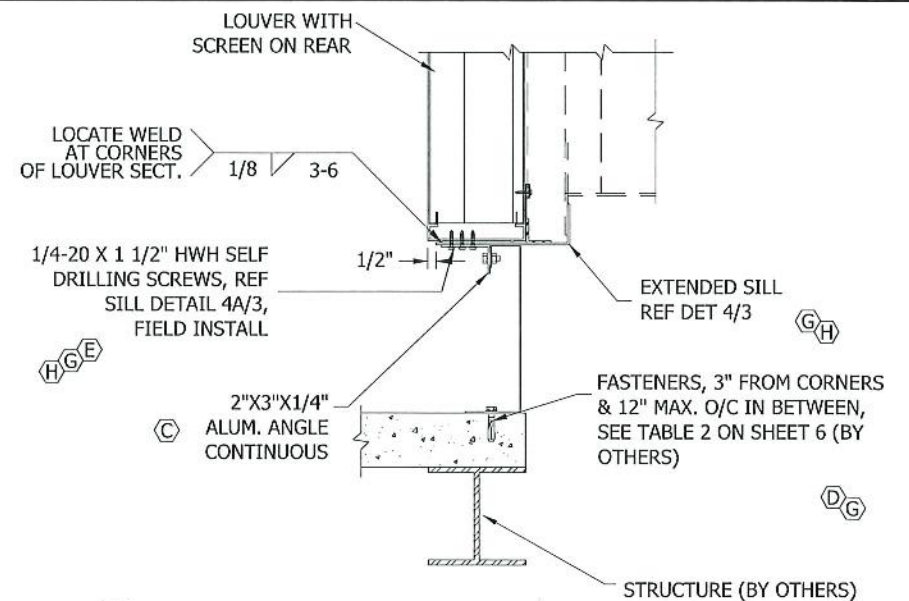
6 PENTHOUSE CROSS SECTION AND INSTALLATION DETAIL
2 NTS



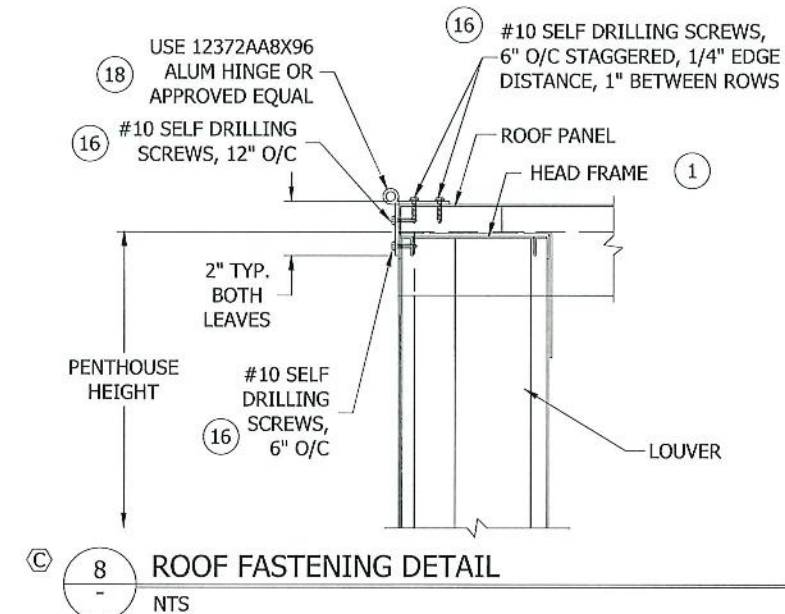
7 PENTHOUSE/CURB CONNECTION DETAIL
NTS



7A PENTHOUSE/INSULATED CURB CONNECTION DETAIL
NTS



6A PENTHOUSE INSTALL (OPTIONAL)
NTS (FOR DETAILS NOT NOTED REF DET 6/-)

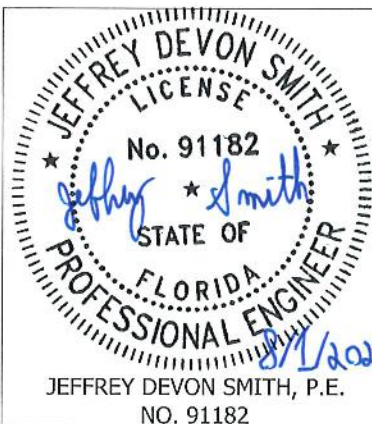


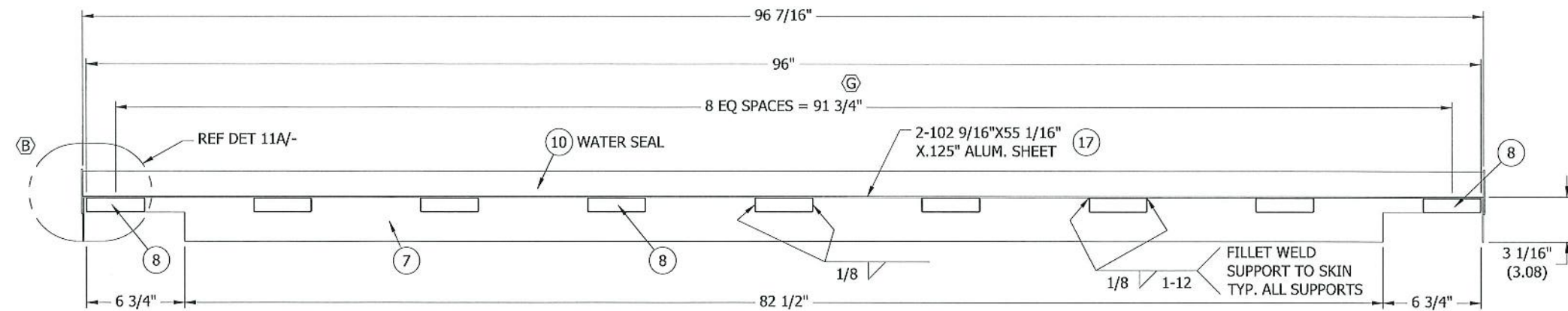
8 ROOF FASTENING DETAIL
NTS

NOTE:
REF SHEET 6 FOR DESCRIPTION OF LINE ITEMS

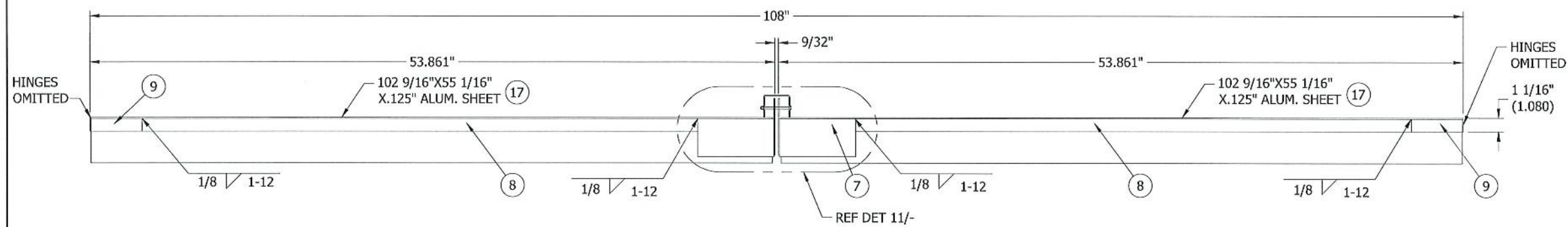
(K)	REV'D ENGINEER OF RECORD & THICKNESS OF ITEMS 17 & 22.	NS	JDS	JDS	-	
(J)	REMOVED SHT 12-13, REORGANIZED PARTS CHANGE OF ENG. OF RECORD	CJD	SDL	MMM	-	12/4/17
(H)	GENERAL REVISIONS	DLB	KJM	NLT	CGW	9/22/15
(G)	GENERAL REVISIONS	DRP	RKP	DJR		7/19/13
(F)	REVISED SILL PART NUMBER (SHEET 6) & SILL FRAME (SHEET 7)	DRP	RKP	DJR		5/10/13
(E)	ADDED SCREWS & NOTE DUE TO TESTING, REV TITLE BLOCK	DWS	DJR	DJR		9/12/2008
CHANGE LETTER	REVISION DESCRIPTION	DRAW. BY:	CHKD. BY:	APPV'D. BY:	APPV'D. BY:	DATE
RUSKIN AUTHORITY IN AIR CONTROL		3900 DR. GREAVES RD. GRANDVIEW, MD 64030		PLOT SCALE		
TITLE		PHB625D PENTHOUSE DETAILS		NONE		
SHEET 4 OF 11		(E)		DWG. NO.		
				60-022015-00D		

PRODUCT RENEWED
as complying with the Florida Building Code
NOA-No. 24-0906.09
Expiration Date 11/20/2029
By *[Signature]*
Miami-Dade Product Control

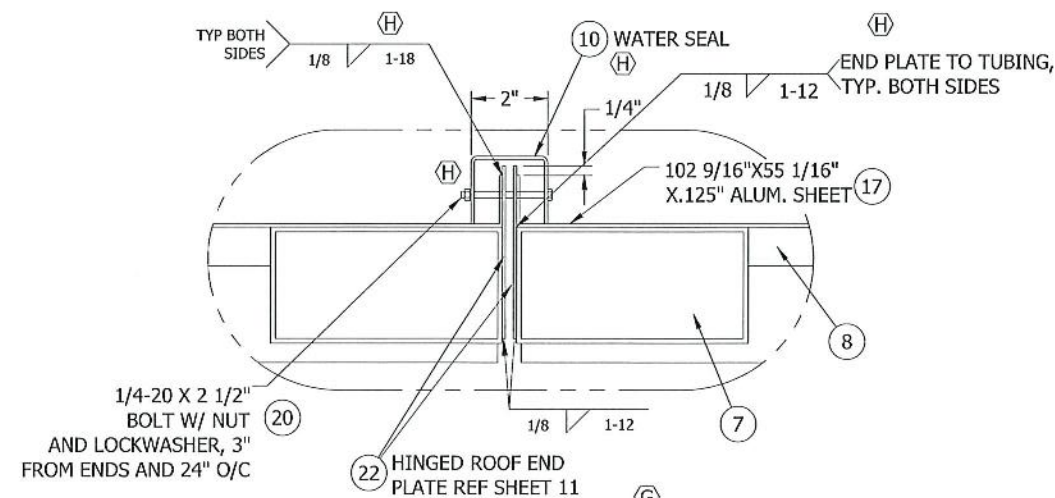




9 ROOF SECTION ASSEMBLY
3 NTS

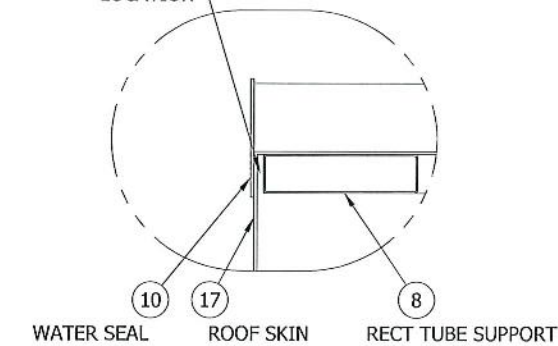


10 ROOF SECTION ASSEMBLY
3 NTS

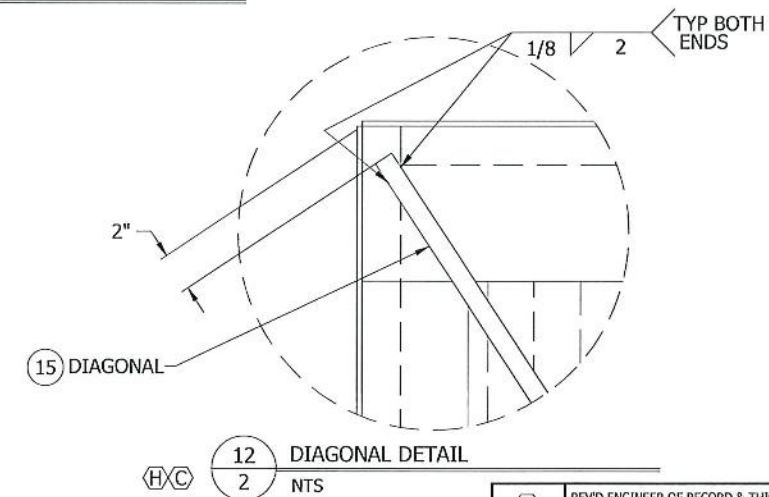


11 ROOF SECTION
NTS

DO NOT WELD ROOF SKIN TO RECT TUBE SUPPORT AT THIS LOCATION



11A ROOF SECTION
NTS



CHANGE LETTER	REVISION DESCRIPTION	DWN. BY:	CHKD. BY:	APPV'D. BY:	APPV'D. DATE
(K)	REV'D ENGINEER OF RECORD & THICKNESS OF ITEMS 17 & 22.	NS	JDS	JDS	-
(J)	REMOVED SHT 12-13, REORGANIZED PARTS CHANGE OF ENG. OF RECORD	CJD	SDL	MMM	12/4/17
(H)	GENERAL REVISIONS	DLB	KJM	NLT	CGW 9/22/15
(G)	GENERAL REVISIONS	DRP	RKP	DJR	7/19/13
(F)	REVISED SILL PART NUMBER (SHEET 6) & SILL FRAME (SHEET 7)	DRP	RKP	DJR	5/10/13
(C)	ADDED DTL 12	DWS	DJR	DJR	9/12/2008

DWN. BY: WRT	CHK. BY: DJR	APPV'D. BY: DJR	APPV'D. BY:
DATE: 6/26/6	DATE: 7/7/6	DATE: 7/7/6	DATE:

RUSKIN
AUTHORITY IN AIR CONTROL
3900 DR. GREAVES RD
GRANDVIEW, MO 64038

FLUT SCALE	NONE	ECN
------------	------	-----

SHEET 5 OF 11

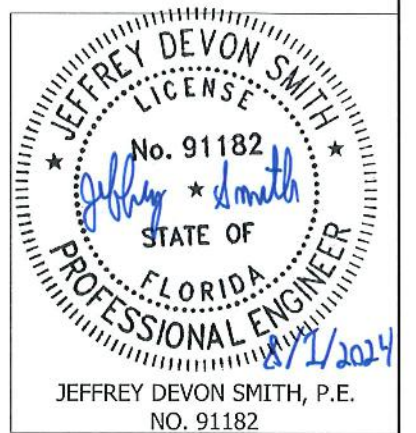
PHB6625D PENTHOUSE
DETAILS

60-022015-00D

NOTE:
REF SHEET 6 FOR DESCRIPTION OF LINE ITEMS (G)

FOR OFFICE USE ONLY

PRODUCT RENEWED
as complying with the Florida
Building Code
NOA-No. 24-0906.09
Expiration Date 11/20/2029
By *[Signature]*
Miami-Dade Product Control




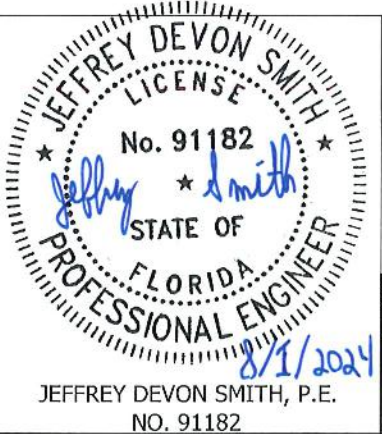
LINE ITEM	SHEET NUMBER	MATERIAL	DESCRIPTION	RUSKIN NUMBER
1	7	6063-T6 ALUM	LOUVER HEAD FRAME	70-021995-00B
2	7	6063-T6 ALUM	LOUVER SILL FRAME	70-022627-00B
3	7	6063-T6 ALUM	LOUVER JAMB FRAME	70-022227-00B
4	7	6063-T6 ALUM	LOUVER BLADE	70-020748-00B
5	8	6063-T5 ALUM	.580"X3.160"X.580"X.080"X84" HHBS	RSM7001
6	8	6063-T5 ALUM	.580"X3.160"X.580"X.080"X96" HHBS	RSM7001
7	8	6063-T5 1/8" ALUM	6"X3" RECT. TUBE ROOF SUPPORT	-
8	8	6063-T6 1/8" ALUM	4"X1" RECT. TUBE SUPPORT (SHORT)	-
9	9	6063-T6 1/8" ALUM	4"X1" RECT. TUBE SUPPORT (LONG)	-
10	9	5005-H34 1/8" ALUM	WATER SEAL	-
11	9	3003-H14 3/8" ALUM	SPECIAL LIFTING LUG	-
12	10	5005-H34 .080" ALUM	LEFT HAND CORNER FLASHING	-
13	10	5005-H34 .080" ALUM	RIGHT HAND CORNER FLASHING	-
14	2	6063-T6 ALUM	2"X2"X1/4"X48" ANGLE	-
15	-	6063-T5 ALUM	DIAGONAL 1"X1/8" THK. BAR	-
16	-	CARBON STEEL, ZC	#10-16 X 1" SELF DRILLING SCREW	-
17	10	5005-H34 1/8" ALUM	PENTHOUSE ROOF SKIN	-
18	11	5052 ALUM	12372AA8X96 HINGE-1/8" THK., 3/8" PIN, 2" KNUCKLE	-
19	10	5005-H34 ALUM	1 1/2"X1 1/2"X1/8"X2" CLIP ANGLE	85-020366-00B
20	-	CARBON STEEL, ZC	1/4-20 X 2 1/2" HHB W/ LOCKWASHER & HEX NUT	-
21	-	CARBON STEEL, ZC	3/8-16 X 1 1/2" HHB W/ WASHER, LOCKWASHER & HEX NUT	-
21A	-	CARBON STEEL, ZC	3/8-16 X 1 1/2" CARBON STEEL SELF TAPPING SCREW	-
22	11	5005-H34 ALUM	4 7/16"X95 7/8"X.125" HINGED DOOR END PLATE	-
23	3	5005-H34 ALUM	EXTENDED SILL .125" THK. FORMED	-
24	3	6063-T6 ALUM	EXTENDED SILL 2"X3"X1/4" ANGLE	-
25	-	-	BLANKOFF X" X Y" ALUM. SHEET	-

CURB SUBSTRATE FASTENER TABLE 2 (BY OTHERS)

SUBSTRATE TYPE	MIN. SUBSTRATE REQUIREMENTS	FASTENER TYPE	MIN. EMBEDMENT	MIN. EDGE DISTANCE
WOOD	0.42 SPECIFIC GRAVITY	3/8" DIA. LAG SCREW	3"	1 1/2"
STEEL	12 GA, 45 KSI TENSILE STRENGTH, 33 KSI YIELD STRENGTH	1/4" DIA. SELF TAPPING SCREW	3 THREADS BEYOND SUB.	3/8"
CONCRETE	2500 PSI COMP. STRENGTH	3/8" DIA. HILTI KWIK BOLT 3, CARBON STEEL	2 1/2"	2 1/2"


FOR OFFICE USE ONLY

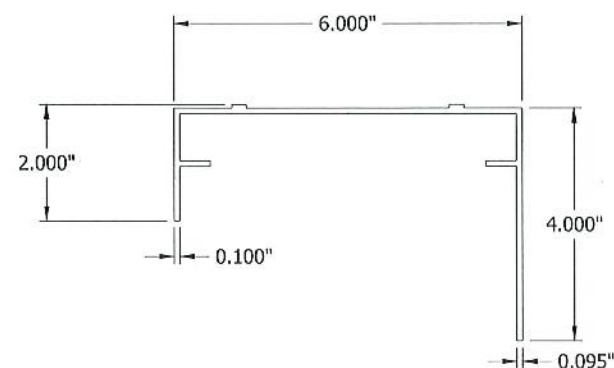
PRODUCT RENEWED
as complying with the Florida
Building Code
NOA-No. 24-0906.09
Expiration Date 11/20/2029
By 
Miami-Dade Product Control



DRAWN BY: WRT	CHECKED BY: DJR	APPROVED BY: DJR	APPROVED BY:
DATE: 6/26/6	DATE: 7/7/6	DATE: 7/7/6	DATE:

SHEET 6 OF 11

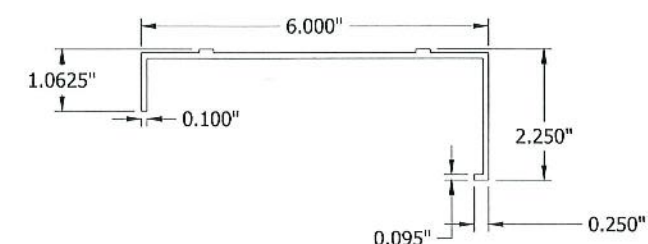
(K)	REV'D ENGINEER OF RECORD & THICKNESS OF ITEMS 17 & 22.	NS	JDS	JDS	-	
(J)	REMOVED SHT 12-13, REORGANIZED PARTS CHANGE OF ENG. OF RECORD	CJD	SDL	MMM	-	12/4/17
(H)	GENERAL REVISIONS	DLB	KJM	NLT	CGW	9/22/15
(G)	GENERAL REVISIONS	DRP	RKP	DJR		7/19/13
(F)	REVISED SILL PART NUMBER (SHEET 6) & SILL FRAME (SHEET 7)	DRP	RKP	DJR		5/10/13
(E)	CHGD ITM 15 TO DIAG	DWS	DJR	DJR		9/12/2008
CHANGE LETTER	REVISION DESCRIPTION	DRAWN BY:	CHECKED BY:	APPROVED BY:	APPROVED BY:	DATE
		PLOT SCALE		ECN		
TITLE		NONE		DWG. NO.		
PHB6625D PENTHOUSE ITEM LIST AND APPROVED ATTACHMENTS TABLE				60-022015-00D		



G

ITEM 1 - LOUVER HEAD FRAME

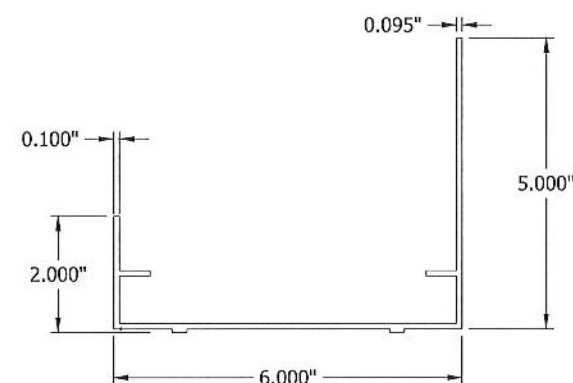
NTS



G

ITEM 3 - LOUVER JAMB FRAME

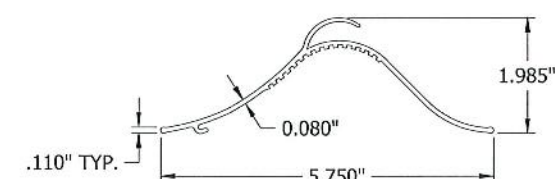
NTS



G/F

ITEM 2 - LOUVER SILL FRAME

NTS



G

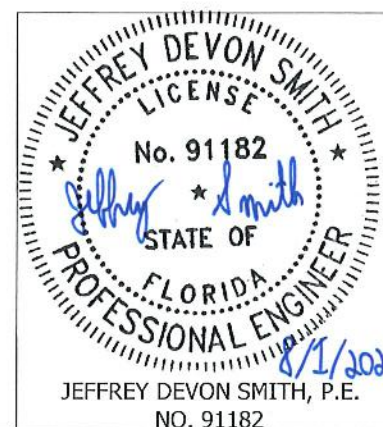
ITEM 4 - LOUVER BLADE

NTS

NOTES:
1. REF. SHEET 6 FOR MATERIAL.

FOR OFFICE USE ONLY

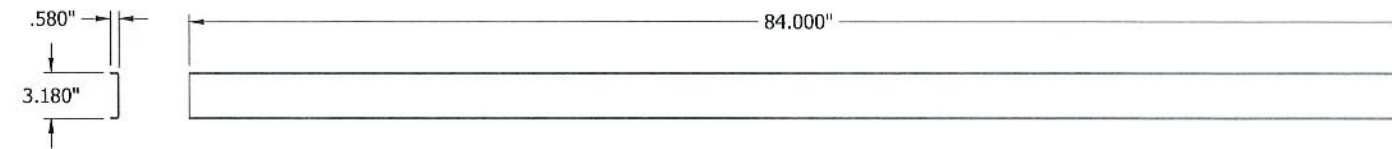
PRODUCT RENEWED
as complying with the Florida
Building Code
NOA-No. 24-0906.09
Expiration Date 11/20/2029
By *[Signature]*
Miami-Dade Product Control



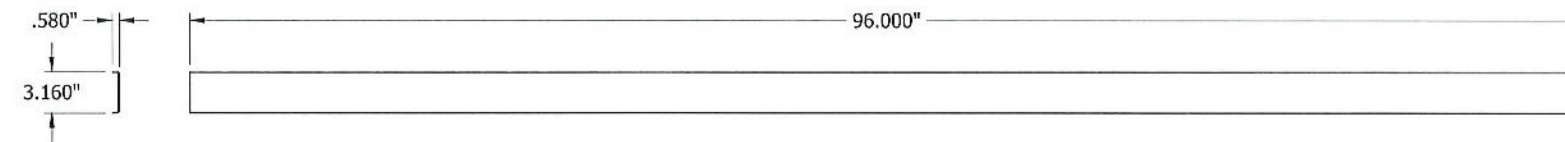
DWN. BY: WRT	CHK. BY: DJR	APPV'D. BY: DJR	APPV'D. BY:
DATE: 6/26/16	DATE: 7/7/16	DATE: 7/7/16	DATE:

SHEET 7 OF 11

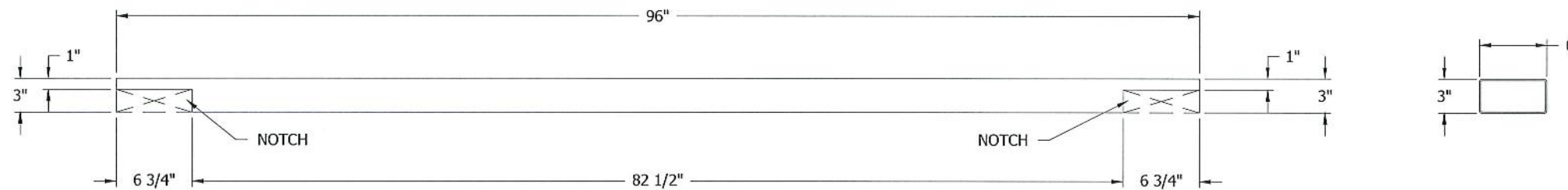
(K)	REV'D ENGINEER OF RECORD & THICKNESS OF ITEMS 17 & 22.	NS	JDS	JDS	-	
(J)	REMOVED SHT 12-13, REORGANIZED PARTS CHANGE OF ENG. OF RECORD	CJD	SDL	MMM	-	12/4/17
(H)	GENERAL REVISIONS	DLB	KJM	NLT	CGW	9/22/15
(G)	GENERAL REVISIONS	DRP	RKP	DJR		7/19/13
(F)	REVISED SILL PART NUMBER (SHEET 6) & SILL FRAME (SHEET 7)	DRP	RKP	DJR		5/10/13
CHANGE LETTER	REVISION DESCRIPTION	DWN. BY:	CHKD. BY:	APPV'D. BY:	APPV'D. BY:	DATE
RUSKIN <small>3900 DR. GREAVES RD GRANDVIEW, MO 64030</small> AUTHORITY IN AIR CONTROL		PLOT SCALE		ECN		
TITLE		DWG. NO.				
PHB6625D PENTHOUSE PART DETAILS		NONE		60-022015-00D		



Ⓔ ITEM 5 - .580"X3.160"X.580"X.080"X84" HHBS
NTS

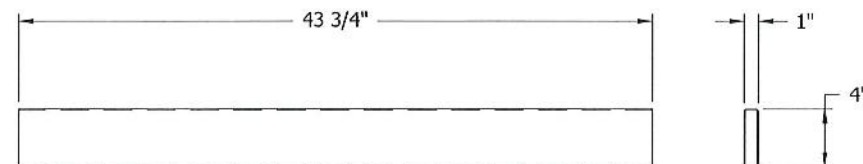


Ⓔ ITEM 6 - .580"X3.160"X.580"X.080"X96" HHBS
NTS



ITEM 7 - 6"X3" ROOF SUPPORT
NTS

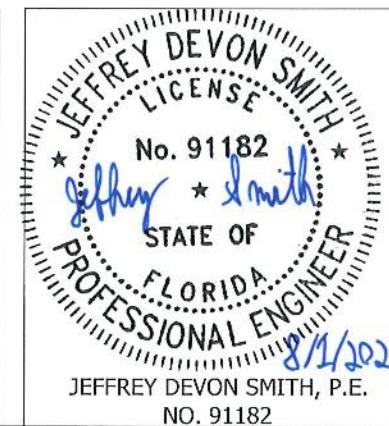
NOTES: Ⓔ
1. REF. SHEET 6 FOR MATERIAL.



ITEM 8 - 4"X1" SUPPORT (SHORT)
NTS

FOR OFFICE USE ONLY

PRODUCT RENEWED
as complying with the Florida
Building Code
NOA-No. 24-0906.09
Expiration Date 11/20/2029
By *[Signature]*
Miami-Dade Product Control



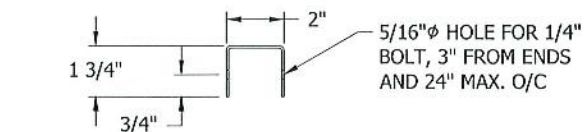
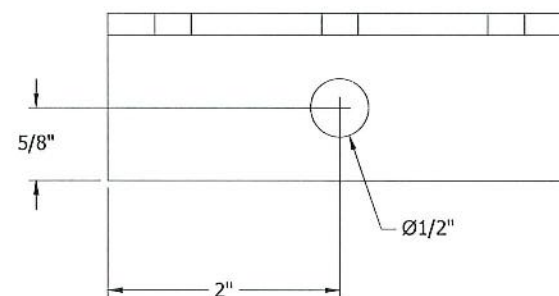
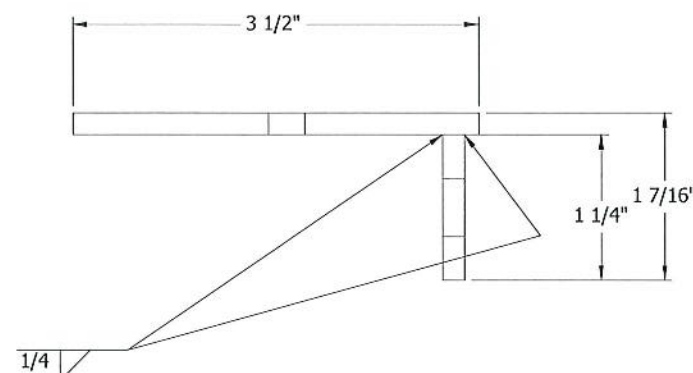
DWN. BY: WRT	CHK. BY: DJR	APPV'D. BY: DJR	APPV'D. BY:
DATE: 6/26/16	DATE: 7/7/16	DATE: 7/7/16	DATE:

SHEET 8 OF 11

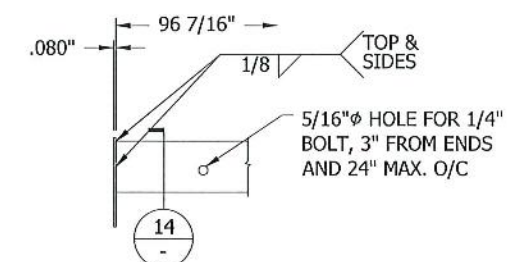
Ⓔ	REV'D ENGINEER OF RECORD & THICKNESS OF ITEMS 17 & 22.	NS	JDS	JDS	-	
Ⓔ	REMOVED SHT 12-13, REORGANIZED PARTS CHANGE OF ENG. OF RECORD	CJD	SDL	MMM	-	12/4/17
Ⓔ	GENERAL REVISIONS	DLB	KJM	NLT	CGW	9/22/15
Ⓔ	GENERAL REVISIONS	DRP	RKP	DJR		7/19/13
Ⓔ	REVISED SILL PART NUMBER (SHEET 6) & SILL FRAME (SHEET 7)	DRP	RKP	DJR		5/10/13
CHANGE LETTER	REVISION DESCRIPTION	DWN. BY:	CHK'D. BY:	APPV'D. BY:	APPV'D. BY:	DATE
RUSKIN <small>3900 DRL GREAVES RD GRANDVIEW, FL 33030</small> AUTHORITY IN AIR CONTROL		PLOT SCALE		ECN		
TITLE		PHB6625D PART DETAILS		DWG. NO.		
				60-022015-00D		



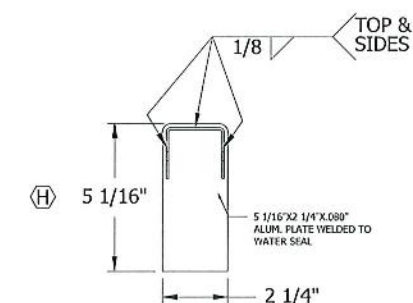
ITEM 9 - 4"X1" SUPPORT (LONG)
NTS



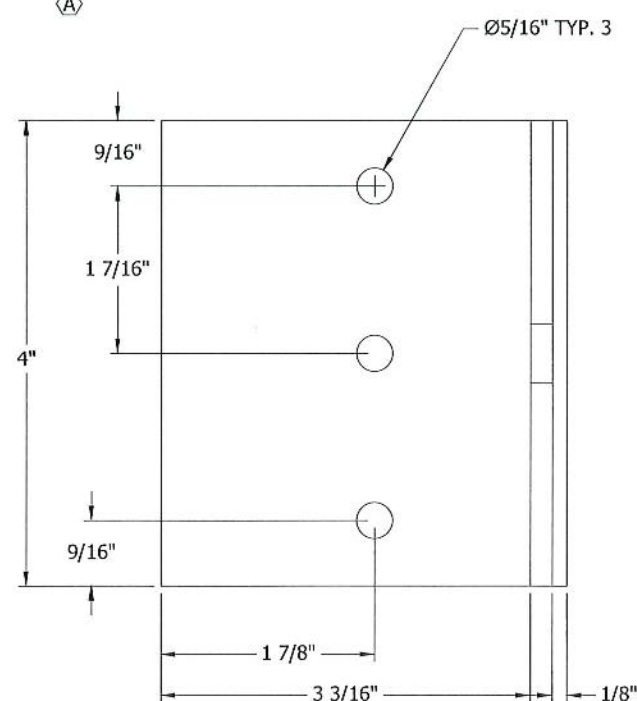
ITEM 10 - WATER SEAL
NTS
LENGTH: 96 7/16" (A)(G)



(H) 13 WATER SEAL AT END
NTS



(H) 14 WATER SEAL AT END DETAIL
NTS

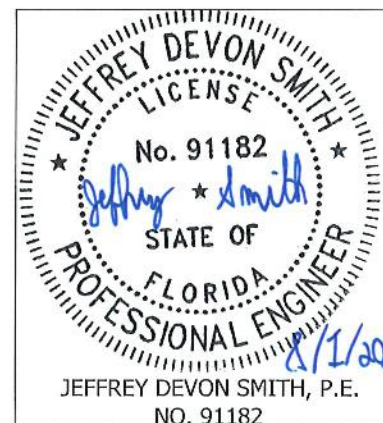


ITEM 11 - SPECIAL LIFTING LUG
NTS

NOTES:
1. REF SHEET 6 FOR MATERIAL (G)

FOR OFFICE USE ONLY

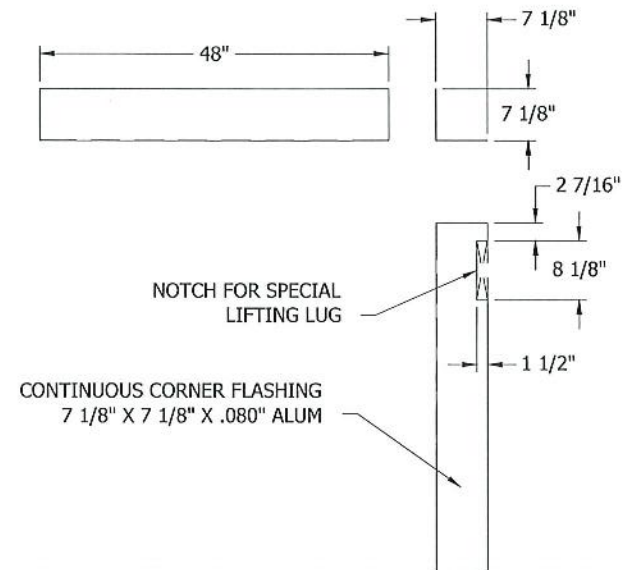
PRODUCT RENEWED
as complying with the Florida
Building Code
NOA-No. 24-0906.09
Expiration Date 11/20/2029
By *[Signature]*
Miami-Dade Product Control



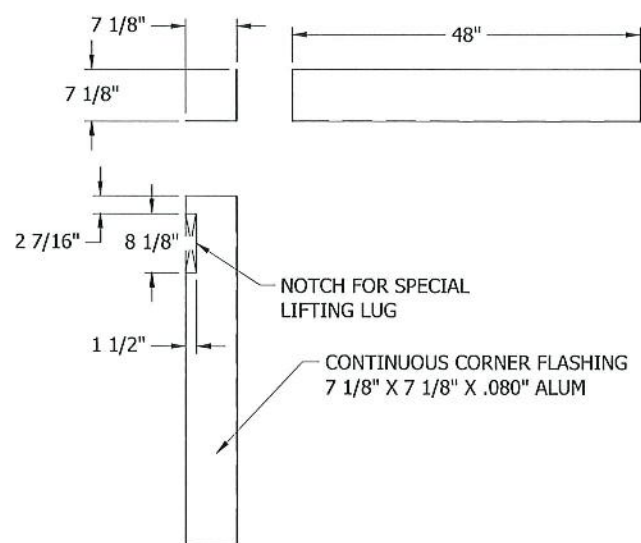
DWN. BY: WRT	CHK. BY: DJR	APPVD. BY: DJR	APPVD. BY:
DATE: 6/25/6	DATE: 7/7/6	DATE: 7/7/6	DATE:

SHEET 9 OF 11

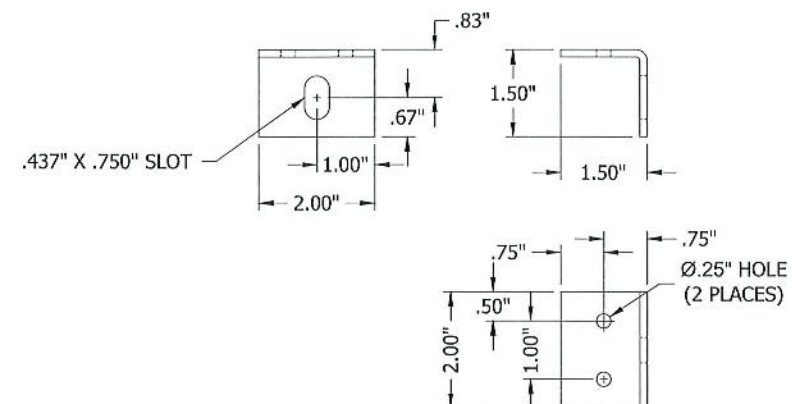
(K)	REV'D ENGINEER OF RECORD & THICKNESS OF ITEMS 17 & 22.	NS	JDS	JDS	-	
(J)	REMOVED SHT 12-13, REORGANIZED PARTS CHANGE OF ENG. OF RECORD	CJD	SDL	MMM	-	12/4/17
(H)	GENERAL REVISIONS	DLB	KJM	NLT	CGW	9/22/15
(G)	GENERAL REVISIONS	DRP	RKP	DJR		7/19/13
(F)	REVISED SILL PART NUMBER (SHEET 6) & SILL FRAME (SHEET 7)	DRP	RKP	DJR		5/10/13
(A)	CHNGD DIM. FOR DETAIL (1) TO 96 7/16"	TMH	DWS	DWS		7/19/07
CHANGE LETTER	REVISION DESCRIPTION	DWN. BY:	CHKD. BY:	APPVD. BY:	APPVD. BY:	DATE
RUSKIN <small>3900 DR. GREAVES RD GAP, DUTCH, MO 64030</small> AUTHORITY IN AIR CONTROL		PLOT SCALE		ECN		
TITLE		DWG. NO.				
PHB6625D PENTHOUSE PART DETAILS		60-022015-00D				



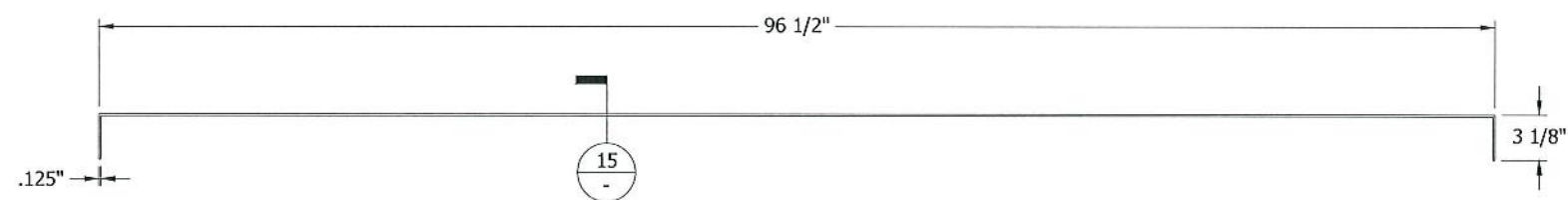
ITEM 12 - LEFT HAND CORNER FLASHING
NTS



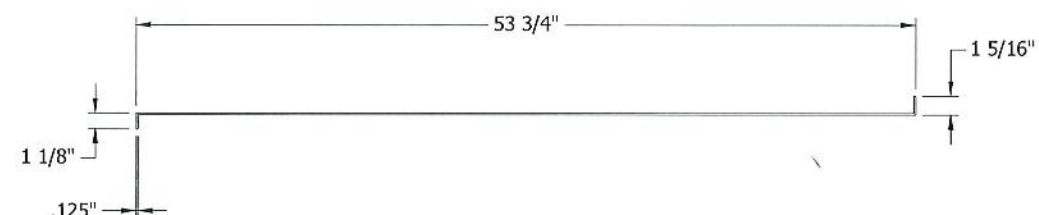
ITEM 13 - RIGHT HAND CORNER FLASHING
NTS



ITEM 19 - 1 1/2"X1 1/2"X1/8"X2" CLIP ANGLE
NTS



ITEM 17 - PENTHOUSE ROOF SKIN
NTS

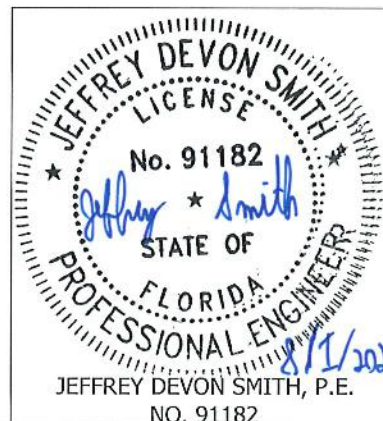


ITEM 15 - PENTHOUSE ROOF SKIN SECTION
NTS

NOTES:
1. REF SHEET 6 FOR MATERIAL. (G)


FOR OFFICE USE ONLY

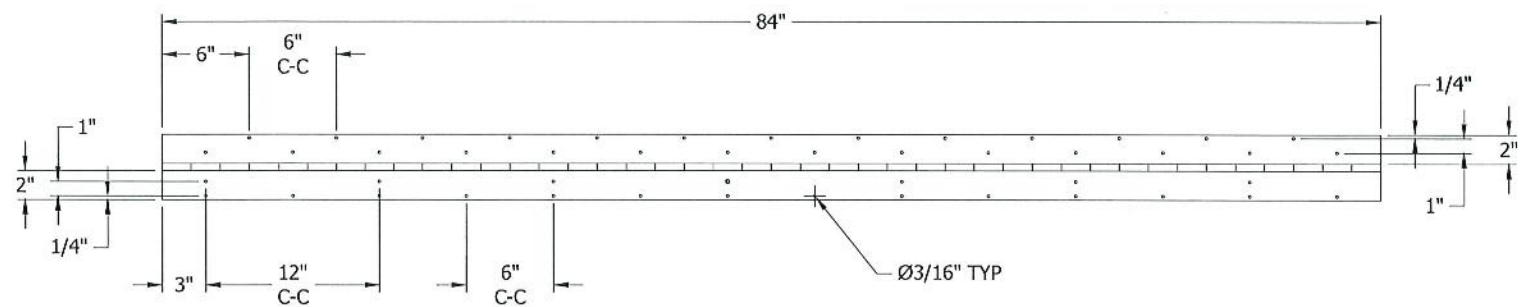
PRODUCT RENEWED
as complying with the Florida
Building Code
NOA-No. 24-0906.09
Expiration Date 11/20/2029
By *[Signature]*
Miami-Dade Product Control



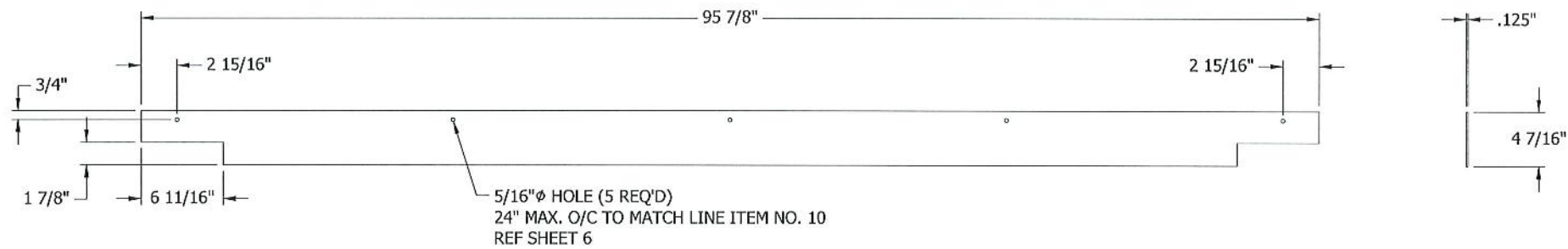
DWG. BY: WRT
DATE: 6/25/6
CHK. BY: DJR
DATE: 7/7/6
APP'D. BY: DJR
DATE: 7/7/6
APP'D. BY: *[Signature]*
DATE: *[Signature]*

SHEET 10 OF 11

(K)	REV'D ENGINEER OF RECORD & THICKNESS OF ITEMS 17 & 22.	NS	JDS	JDS	-	
(J)	REMOVED SHT 12-13, REORGANIZED PARTS REMOVED OF ENG. OF RECORD	CJD	SDL	MMM	-	12/4/17
(H)	GENERAL REVISIONS	DLB	KJM	NLT	CGW	9/22/15
(G)	GENERAL REVISIONS	DRP	RKP	DJR		7/19/13
(F)	REVISED SILL PART NUMBER (SHEET 6) & SILL FRAME (SHEET 7)	DRP	RKP	DJR		5/10/13
(A)	REV'D WELD SIZE ON ITEM 11	DDM	DWS	DJR		5/31/07
CHANGE LETTER	REVISION DESCRIPTION	DWG. BY:	CHK'D. BY:	APP'D. BY:	APP'D. BY:	DATE
 3900 DR. GRAVES RD GRANDVIEW, MO 64030 AUTHORITY IN AIR CONTROL		PLOT SCALE NONE		ECN		
TITLE PHB6625D PENTHOUSE PART DETAILS		DWG. NO. 60-022015-00D				



(H)
 ITEM 18 - HINGE
 NTS



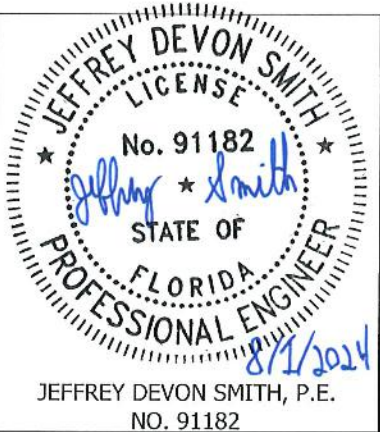
(G)
 ITEM 22 - 4 7/16\"X95 7/8\"X.125\" HINGED DOOR END PLATE
 NTS

NOTES:
 1. REF SHEET 6 FOR MATERIAL.

(G)

FOR OFFICE USE ONLY

PRODUCT RENEWED
as complying with the Florida
Building Code
NOA-No. 24-0906.09
Expiration Date 11/20/2029
By *[Signature]*
Miami-Dade Product Control



DWN. BY: WRT	CHK. BY: DJR	APPV'D. BY: DJR	APPV'D. BY:
DATE: 6/25/6	DATE: 7/7/6	DATE: 7/7/6	DATE:

SHEET 11 OF 11

(K)	REV'D ENGINEER OF RECORD & THICKNESS OF ITEMS 17 & 22.	NS	JDS	JDS	-	
(J)	REMOVED SHT 12-13, REORGANIZED PARTS CHANGE OF ENG. OF RECORD	CJD	SDL	MMM	-	12/4/17
(H)	GENERAL REVISIONS	DLB	KJM	NLT	CGW	9/22/15
(G)	GENERAL REVISIONS	DRP	RKP	DJR		7/19/13
(F)	REVISED SILL PART NUMBER (SHEET 6) & SILL FRAME (SHEET 7)	DRP	RKP	DJR		5/10/13
CHANGE LETTER	REVISION DESCRIPTION	DWN. BY:	CHKD. BY:	APPV'D. BY:	APPV'D. BY:	DATE
RUSKIN AUTHORITY IN AIR CONTROL 3900 D.R. GRAVES RD. GRANDVIEW, MO 64030		PLOT SCALE		ECN		
TITLE		DWN. NO.				
(G) PHB6625D PENTHOUSE PART DETAILS		NONE		60-022015-00D		