



DEPARTMENT OF REGULATORY AND ECONOMIC RESOURCES (RER)  
BOARD AND CODE ADMINISTRATION DIVISION

## NOTICE OF ACCEPTANCE (NOA)

MIAMI-DADE COUNTY  
PRODUCT CONTROL SECTION  
11805 SW 26 Street, Room 208  
Miami, Florida 33175-2474  
T (786) 315-2590 F (786) 315-2599  
[www.miamidade.gov/economy](http://www.miamidade.gov/economy)

**Air System Components, Inc. dba PennBarry**  
**605 Shiloh Road**  
**Plano, TX 75074**

### SCOPE:

This NOA is being issued under the applicable rules and regulations governing the use of construction materials. The documentation submitted has been reviewed and accepted by Miami-Dade County RER-Product Control Section to be used in Miami Dade County and other areas where allowed by the Authority Having Jurisdiction (AHJ).

This NOA shall not be valid after the expiration date stated below. The Miami-Dade County Product Control Section (In Miami Dade County) and/or the AHJ (in areas other than Miami Dade County) reserve the right to have this product or material tested for quality assurance purposes. If this product or material fails to perform in the accepted manner, the manufacturer will incur the expense of such testing and the AHJ may immediately revoke, modify, or suspend the use of such product or material within their jurisdiction. RER reserves the right to revoke this acceptance if it is determined by Miami-Dade County Product Control Section that this product or material fails to meet the requirements of the applicable building code.

This product is approved as described herein and has been designed to comply with the Florida Building Code, including the High Velocity Hurricane Zone.

### DESCRIPTION: Series RAU and RAUMO Steel Rooftop Axial Upblast Fans

**APPROVAL DOCUMENT:** Drawing titled "RAU/RAUMO", sheets 1 through 9 of 9, dated 11/20/2023, prepared by Air System Components, Inc. dba PennBarry, signed and sealed by Gary T. Hartman, P.E. on 03/17/2025, bearing the Miami-Dade County Product Control approval stamp with the Notice of Acceptance number and expiration date by the Miami-Dade County Product Control Section.

### MISSILE IMPACT RATING: Large and Small Missile Impact Resistant

**LABELING:** Each unit shall bear a permanent label with the manufacturer's name or logo, Horizon City, TX, model/series, and following statement: "Miami-Dade County Product Control Approved", unless otherwise noted herein.

**RENEWAL** of this NOA shall be considered after a renewal application has been filed and there has been no change in the applicable building code negatively affecting the performance of this product.

**TERMINATION** of this NOA will occur after the expiration date or if there has been a revision or change in the materials, use, and/or manufacture of the product or process. Misuse of this NOA as an endorsement of any product, for sales, advertising or any other purposes shall automatically terminate this NOA. Failure to comply with any section of this NOA shall be cause for termination and removal of NOA.

**ADVERTISEMENT:** The NOA number preceded by the words Miami-Dade County, Florida, and followed by the expiration date may be displayed in advertising literature. If any portion of the NOA is displayed, then it shall be done in its entirety.

**INSPECTION:** A copy of this entire NOA shall be provided to the user by the manufacturer or its distributors and shall be available for inspection at the job site at the request of the Building Official.

This NOA consists of this page 1 and evidence page E-1, as well as the approval document mentioned above. The submitted documentation was reviewed by **Carlos M. Utrera, P.E.**



04/11/25

NOA No. 24-1011.04  
Expiration Date: April 24, 2030  
Approval Date: April 24, 2025  
Page 1

**NOTICE OF ACCEPTANCE: EVIDENCE SUBMITTED**

**A. DRAWINGS**

1. Drawing No titled "RAU/RAUMO", sheets 1 through 9 of 9, dated 11/20/2023, prepared by Air System Components, Inc. dba PennBarry, signed and sealed by Gary T. Hartman, P.E. on 03/17/2025.

**B. TESTS**

1. Test reports on 1) Uniform Static Air Pressure Test, Loading per FBC TAS 202-94  
2) Large Missile Impact Test per FBC, TAS 201-94  
along with marked-up drawings and installation diagram of Models RAU 20 and RAU 6011 steel fans, prepared by Intertek, Test Report No. **P7126.01-801-18 R0**, dated 06/04/2024, signed and sealed by Tyler Westerling, P.E.

**C. CALCULATIONS**

1. RAU/RAUMO Analysis and Calculations, prepared by ICC ES, LLC, dated 03/17/2025, signed and sealed by Gary T. Hartman, P.E.

**D. QUALITY ASSURANCE**

1. Miami-Dade Department of Regulatory and Economic Resources (RER).

**E. MATERIAL CERTIFICATIONS**

1. None.

**F. STATEMENTS**

1. Statement letters of code conformance to the 8<sup>th</sup> edition (2023) of the FBC and of no financial interest, issued ICC ES, LLC, dated 03/17/2025, signed and sealed by Gary T. Hartman, P.E.
2. Distributor agreement dated 03/31/2025.




---

**Carlos M. Utrera, P.E.**  
**Product Control Examiner**  
**NOA No. 24-1011.04**  
**Expiration Date: April 24, 2030**  
**Approval Date: April 24, 2025**

NOTES -

1. THIS PRODUCT SHOWN HEREIN IS DESIGNED AND MANUFACTURED TO COMPLY WITH REQUIREMENTS OF THE FLORIDA BUILDING CODE INCLUDING THE HVHZ.
2. WOOD AND METAL FRAMING AND CONCRETE OPENING TO BE DESIGNED AND ANCHORED TO PROPERLY TRANSFER ALL LOADS TO STRUCTURE. FRAMING AND CONCRETE OPENING IS THE RESPONSIBILITY OF THE ARCHITECT OR ENGINEER OF RECORD.
3. 1X BUCK OVER CONCRETE IS OPTIONAL. WHERE 1X BUCK IS NOT USED DISSIMILAR MATERIALS MUST BE SEPARATED WITH APPROVED COATING OR MEMBRANE. SELECTION OF COATING OR MEMBRANE IS THE RESPONSIBILITY OF THE ARCHITECT OR ENGINEER OF RECORD.
4. ALLOWABLE STRESS INCREASE OF 1/3 WAS NOT USED IN THE DESIGN OF THE PRODUCT SHOWN HEREIN. WIND LOAD DURATION FACTOR Cd=1.6 WAS USED FOR WOOD ANCHOR CALCULATIONS.
5. APPROVED IMPACT PROTECTIVE SYSTEM IS NOT REQUIRED FOR THIS PRODUCT IN WIND BORNE DEBRIS REGIONS.
6. FOR ANCHORING INTO WOOD FRAMING USE #12 WOOD SCREWS WITH SUFFICIENT LENGTH TO OBTAIN 1-15/16" MIN EMBEDMENT, AS SHOWN ON SHEET 8.
7. FOR ANCHORING INTO UN-CRACKED CONCRETE USE CONCRETE USE ITW 3/16" HWH LONG THREAD TAPCONS WITH SUFFICIENT LENGTH TO ACHIEVE A 1-3/4" MINIMUM EMBEDMENT INTO SUBSTRATE WITH 2-1/4" MINIMUM EDGE DISTANCE. LOCATE ANCHORS AS SHOWN ON SHEET 8.
8. FOR ANCHORING INTO STEEL STRUCTURE USE #12#3-POINT SELF DRLLING TEK SCREWS WITH SUFFICIENT LENGTH TO ACHIEVE THREE THREADS BEYOND STRUCTURE. LOCATE ANCHORS AS SHOWN ON SHEET 8.
9. ALL FASTENERS TO BE CORROSION RESISTANT. UNLESS OTHERWISE NOTED.
10. THIS APPROVAL IS FOR STRUCTURAL PERFORMANCE AND IMPACT RESISTANCE ONLY. INTERIOR MECHANISM AND / OR ELECTRICAL CIRCUITRY ARE OUTSIDE THE SCOPE OF THIS APPROVAL.
11. UNITS WERE NOT TESTED FOR WATER PENETRATION PER FBC, TAS 100(A).
12. INSTALLATION ANCHORS SHALL BE INSTALLED IN ACCORDANCE WITH ANCHOR MANUFACTURER'S INSTALLATION INSTRUCTIONS AND ANCHORS SHALL NOT BE USED IN SUBSTRATES WITH STRENGTHS LESS THAN THE MINIMUM STRENGTH SPECIFIED BELOW -
  - WOOD - MINIMUM SPECIFIC GRAVITY OF G = 0.5
  - CONCRETE - MINIMUM COMPRESSIVE STRENGTH OF 3,000 PSI.
  - METAL STRUCTURE: STEEL 1/8" (PER SHEET 8) THICK, 36KSI.

**PRODUCT APPROVED**  
as complying with the Florida  
Building Code  
NOA-No. 24-1011.04  
Approval Date 04/24/2025  
By   
Miami-Dade Product Control

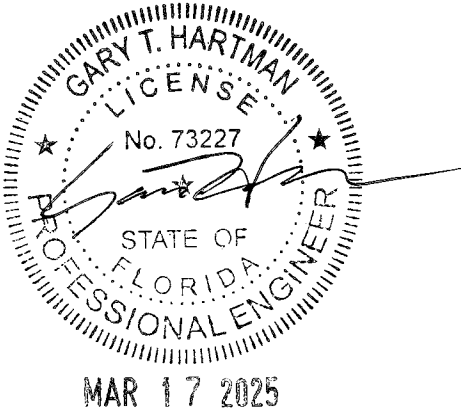


TABLE OF CONTENTS			
SHEET NO.	DESCRIPTION	SHEET NO.	DESCRIPTION
1	GENERAL NOTES	7	VENTURI PANEL , PEDESTAL ASSEMBLY & MOTOR COVER
2	RAU ASSEMBLY	8	ROOF CURB
4	RAUMO ASSEMBLY		
6	WINDBAND ASSEMBLY & LOWER WINDBAND ASSEMBLY		

PennBarry 605 Shiloh RD Plano, TX 75074

RAU/RAUMO  
GENERAL NOTES

DRAWN:

MAHESH

DWG NO.

XXX

REV

A

SCALE

NTS

DATE

11/20/2023

SHEET

1 OF 9

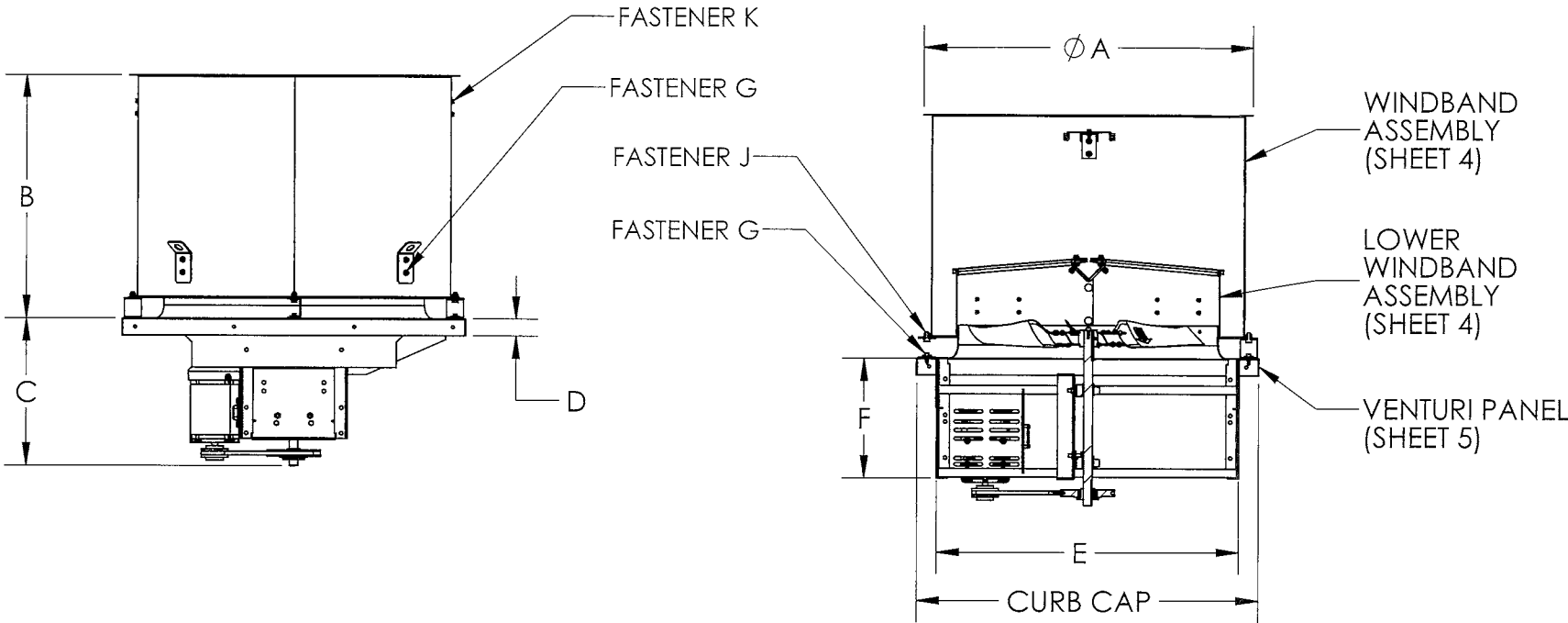
REVISIONS			
REV	DESCRIPTION	DATE	APPROVED
A	ENGINEERING REVISION	11/20/2023	-

UNIT	A	B	C	D	E	F	CURB CAP	WEIGHT (lbs)
RAU 20	28.25	22.88	15.12	2.00	25.36	12.50	30.00	115
RAU 24	30.50	25.75	15.42	2.00	29.37	12.56	34.00	133
RAU 30	38.50	28.50	17.25	2.00	35.37	14.06	40.00	172
RAU 36	42.50	33.00	19.33	2.00	41.37	16.31	46.00	230
RAU 42	50.75	37.00	19.44	2.00	47.31	16.33	52.00	287
RAU 48	57.00	41.13	22.46	2.00	53.19	17.87	58.00	353
RAU 54	61.88	45.13	23.86	2.00	61.70	19.00	66.50	460
RAU 60	70.88	49.25	24.13	2.00	67.78	19.00	72.50	575

ALL DIMENSIONS ARE IN INCHES  
WEIGHT DO NOT INCLUDE MOTOR, DRIVE AND DAMPERS

DESIGN LIMITS	
MAX. DESIGN LOAD:	+/- 70 psf (3.35 Kpa)
MAX. OVERALL ENCLOSURE:	72.5 x 72.5 IN. (1841 x 1841 MM)
MAX. OVERALL UNIT HEIGHT:	72.25 IN. (1835 MM)

- NOTES:
1. UNITS TESTED FOR TAS-201 (LARGE MISSILE IMPACT) & TAS-202 (STATIC LOADING).
  2. DESIGN PRESSURE = +/- 70 PSF.
  3. DESIGN, TESTING AND INSTALLATION CONFORMS TO FLORIDA BUILDING CODE.
  4. UNITS NOT TESTED FOR WATER PENETRATION PER FBC, TAS 100(A)
  5. THIS APPROVAL IS FOR STRUCTURAL PERFORMANCE & IMPACT RESISTANCE ONLY. INTERIOR MECHANISM AND/OR ELECTRICAL CIRCUITRY ARE OUTSIDE THE SCOPE OF THIS APPROVAL.



RAU Assembly

**PRODUCT APPROVED**  
as complying with the Florida  
Building Code  
NOA-No. 24-1011.04  
Approval Date 04/24/2025  
By *[Signature]*  
Miami-Dade Product Control

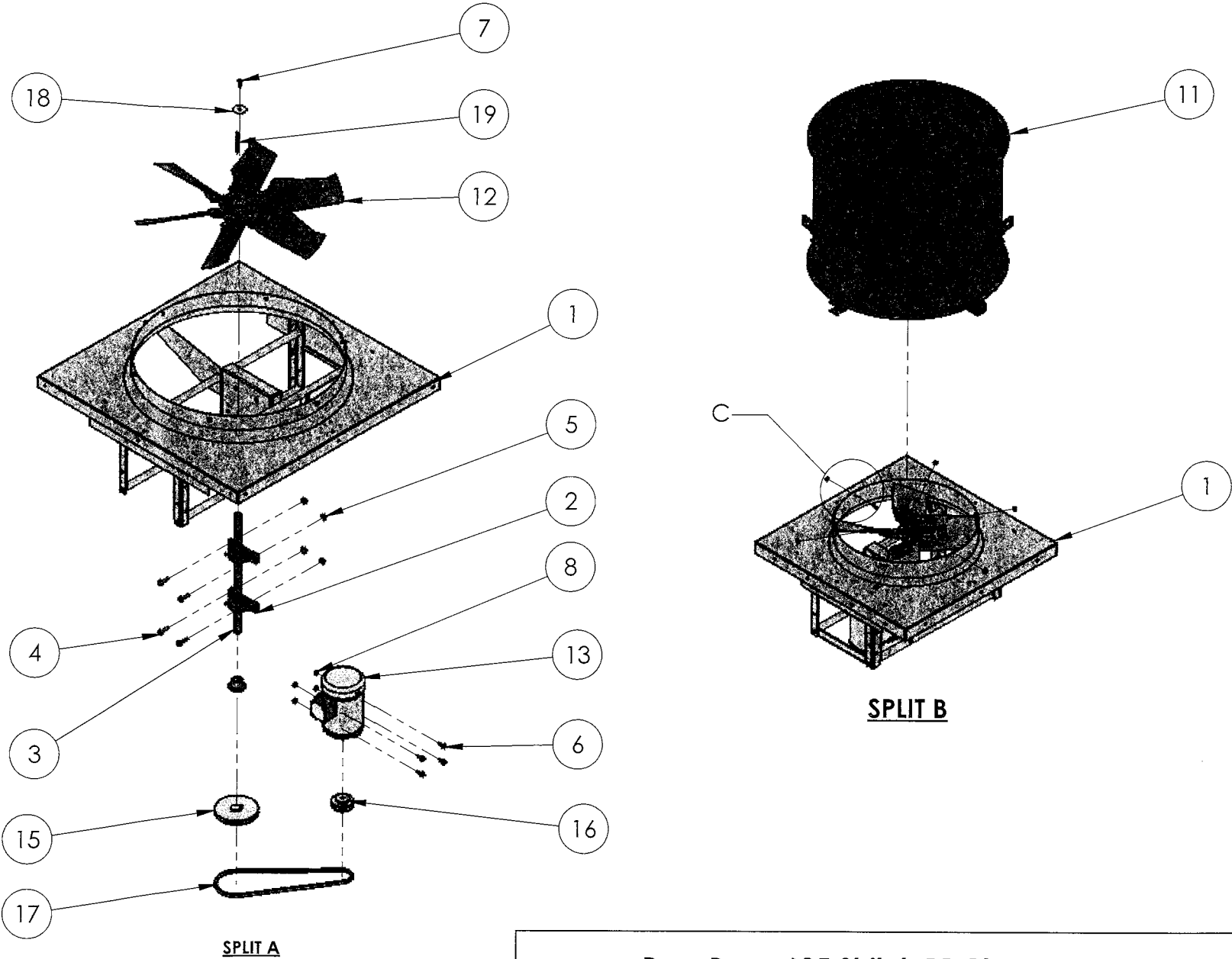
FASTENER G			FASTENER J		FASTENER K	
UNIT	DESCRIPTION	QTY	DESCRIPTION	QTY	DESCRIPTION	QTY
RAU 20	5/16-18 X 3/4 HH TYPE F T	12	BOLT WHIZ 3/8- 16 X 3/4	4	BOLT WHIZ 1/4- 20 X 3/4	4
RAU 24		12		4		4
RAU 30		12		4		4
RAU 36		12		4		4
RAU 42		32		8		4
RAU 48		32		8		4
RAU 54		32		8		4
RAU 60		32		8		4



PennBarry 605 Shiloh RD Plano, TX 75074		
RAU ASSEMBLY		
DRAWN: MAHESH	DWG NO. XXX	REV A
SCALE NTS	DATE 11/20/2023	SHEET 2 OF 9

BILL OF MATERIALS			
ITEM NO.	PART NUMBER	DESCRIPTION	QTY.
1	41118	VENTURI-MOTOR STR WELDMENT	1
2	57090-0	BEARING	2
3	70299	SHAFT	1
4	55518-0	BOLT, WHIZ, .375-16 X 1.5	4
5	55502-0	NUT, WHIZ, 3/8-16	4
6	55647-0	HHCS WHIZ 5/16-18 1.00 Z5	4
7	55641-0	BOLT WHIZ 1/4-20 X 1	1
8	55501-0	5/16-18 WHIZ NUT LGFL 44	4
9	55500-0	NUT WHIZ 1/4-20 LGFL	6
10	55640-0	1/4 " PEM R PRESS-IN STUD	6
11	40868	WINDBAND MAIN ASM	1
12	PROPELLER (SEE TABLE)	HP PROPELLER 30"	1
13	MOTOR	MOTOR	1
14	PULLEY	MOTOR PULLEY	1
15	PULLEY	FAN PULLEY	1
16	BUSHING	BUSHING	1
17	BELT	BELT	1
18	55695-0	WASHER	1
19	41114-04	KEY SHAFT DIA 1.00, LENGTH 3.50	1

REVISIONS			
REV	DESCRIPTION	DATE	APPROVED
A	ENGINEERING REVISION	11/20/2023	-



**PRODUCT APPROVED**  
as complying with the Florida  
Building Code  
NOA-No. 24-1011.04  
Approval Date 04/24/2025  
By *[Signature]*  
Miami-Dade Product Control

**ASSEMBLY SEQUENCE:**

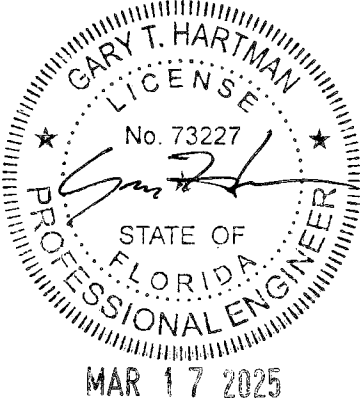
**SPLIT A**

- 1) ARRANGE ITEM 3 & 4 INLINE & ASSEMBLE WITH ITEM 2 BY BOLTING.
- 2) BOLT ITEM 14 WITH ITEM 15, & ASSEMBLE WITH ITEM 2.

**SPLIT B**

- 1) ITEM 8 ATTACHED FROM INSIDE OF ITEM 1.
- 2) BOLTING OF ITEM 1 & 10 USING ITEM 8 & 9.

LEVEL-PRESSURE	PROP PART NO.
1L	70364
2L	70368
1H	70382
2H	70357



PennBarry 605 Shiloh RD Plano, TX 75074			
RAU ASSEMBLY			
DRAWN: MAHESH	DWG NO. XXX	REV A	
SCALE NTS	DATE 11/20/2023	SHEET 3 OF 9	



**PRODUCT APPROVED**  
as complying with the Florida  
Building Code  
NOA-No. 24-1011.04

Approval Date 04/24/2025

By   
Miami-Dade Product Control

REVISIONS

REV	DESCRIPTION	DATE	APPROVED
A	ENGINEERING REVISION	11/20/2023	-

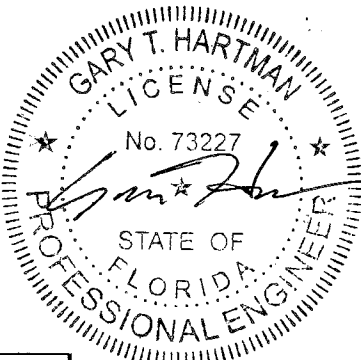
UNIT	A	B	C	D	E	CURB CAP	WEIGHT(lbs)
RAUMO 20	28.25	46.88	29.48	2.00	46.03	30.00	226
RAUMO 24	30.50	49.75	33.48	2.00	50.03	34.00	250
RAUMO 30	38.50	56.38	39.48	2.00	56.00	40.00	326
RAUMO 36	42.50	61.00	45.48	2.00	62.00	46.00	395
RAUMO 42	50.75	65.00	51.48	2.00	68.00	52.00	536
RAUMO 48	57.00	69.00	57.49	2.00	74.00	58.00	611
RAUMO 54	61.88	74.88	65.97	2.00	84.49	66.00	800
RAUMO 60	70.88	80.63	71.95	2.00	90.50	72.50	920

ALL DIMENSIONS ARE IN INCHES  
WEIGHT DO NOT INCLUDE MOTOR, DRIVE AND DAMPERS

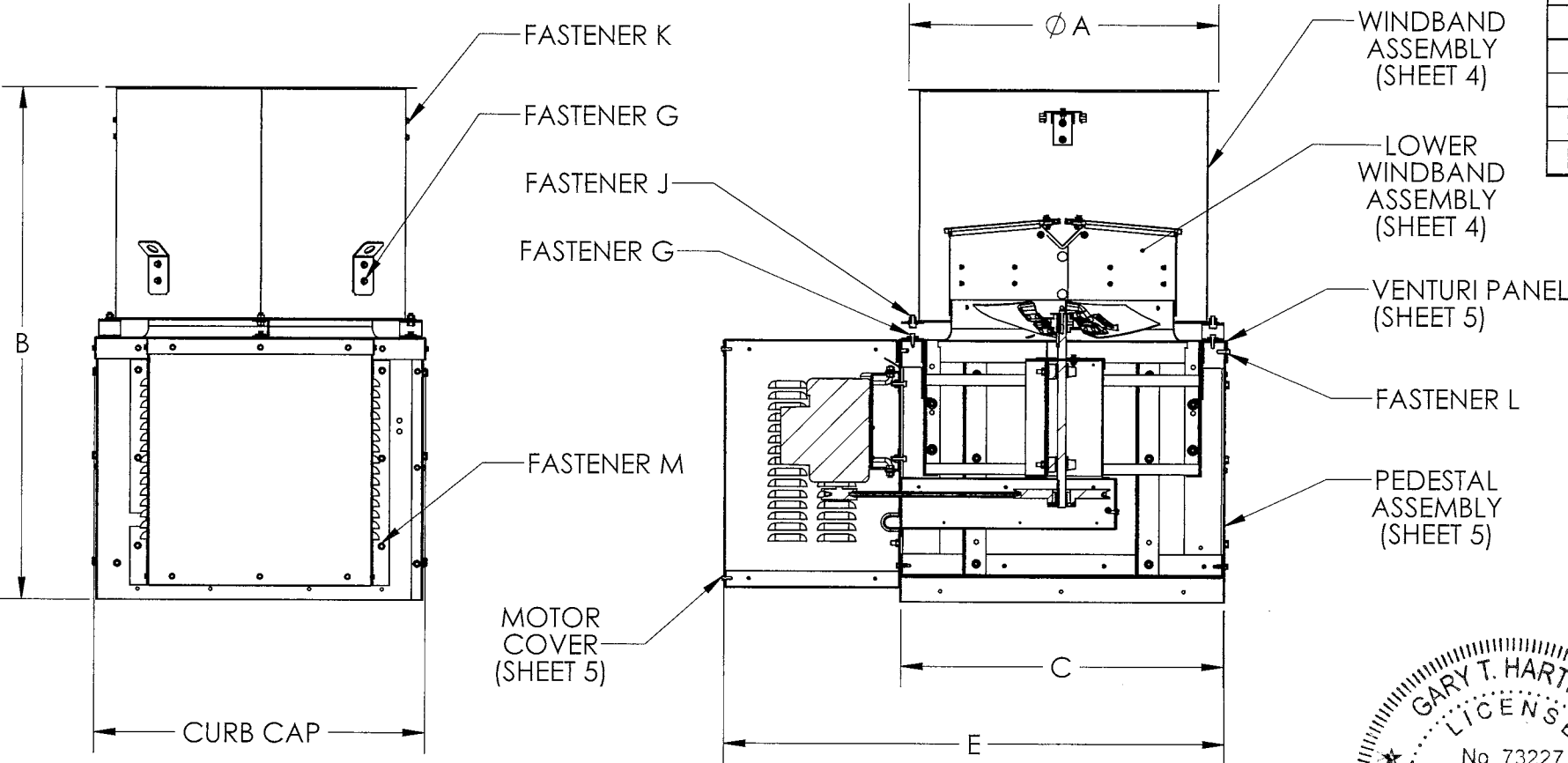
DESIGN LIMITS

MAX. DESIGN LOAD:	+/- 70 psf (3.35 Kpa)
MAX. OVERALL ENCLOSURE:	90.50 x 90.50 IN. (2298 x 2298 MM)
MAX. OVERALL UNIT HEIGHT:	80.63 IN. (3709 MM)

- NOTES:
1. UNITS TESTED FOR TAS-201 (LARGE MISSILE IMPACT) & TAS-202 (STATIC LOADING).
  2. DESIGN PRESSURE = +/- 70 PSF
  3. DESIGN, TESTING AND INSTALLATION CONFORMS TO FLORIDA BUILDING CODE
  4. UNITS NOT TESTED FOR WATER PENETRATION PER FBC, TAS 100(A)
  5. THIS APPROVAL IS FOR STRUCTURAL PERFORMANCE & IMPACT RESISTANCE ONLY. INTERIOR MECHANISM AND/OR ELECTRICAL CIRCUITRY ARE OUTSIDE THE SCOPE OF THIS APPROVAL.



MAR 17 2025



UNIT	FASTENER G		FASTENER J		FASTENER K		FASTENER L		FASTENER M	
	DESCRIPTION	QTY	DESCRIPTION	QTY	DESCRIPTION	QTY	DESCRIPTION	QTY	DESCRIPTION	QTY
RAUMO 20	5/16-18 X 3/4 HH TYPE FT	12	BOLT WHIZ 3/8-16 X 3/4	4	BOLT WHIZ 1/4-20 X 3/4	4	5/16-18 X 3/4 HH TYPE FT	12	BOLT WHIZ 1/4-20 X 1	6
RAUMO 24		12		4		4		12		6
RAUMO 30		12		4		4		12		6
RAUMO 36		12		4		4		16		6
RAUMO 42		32		8		4		16		6
RAUMO 48		32		8		4		16		6
RAUMO 54		32		8		4		16		6
RAUMO 60		32		8		4		16		6

PennBarry 605 Shiloh RD Plano, TX 75074

RAUMO ASSEMBLY

DRAWN:	DWG NO.	REV
MAHESH	XXX	A
SCALE	DATE	SHEET
NTS	11/20/2023	4 OF 9

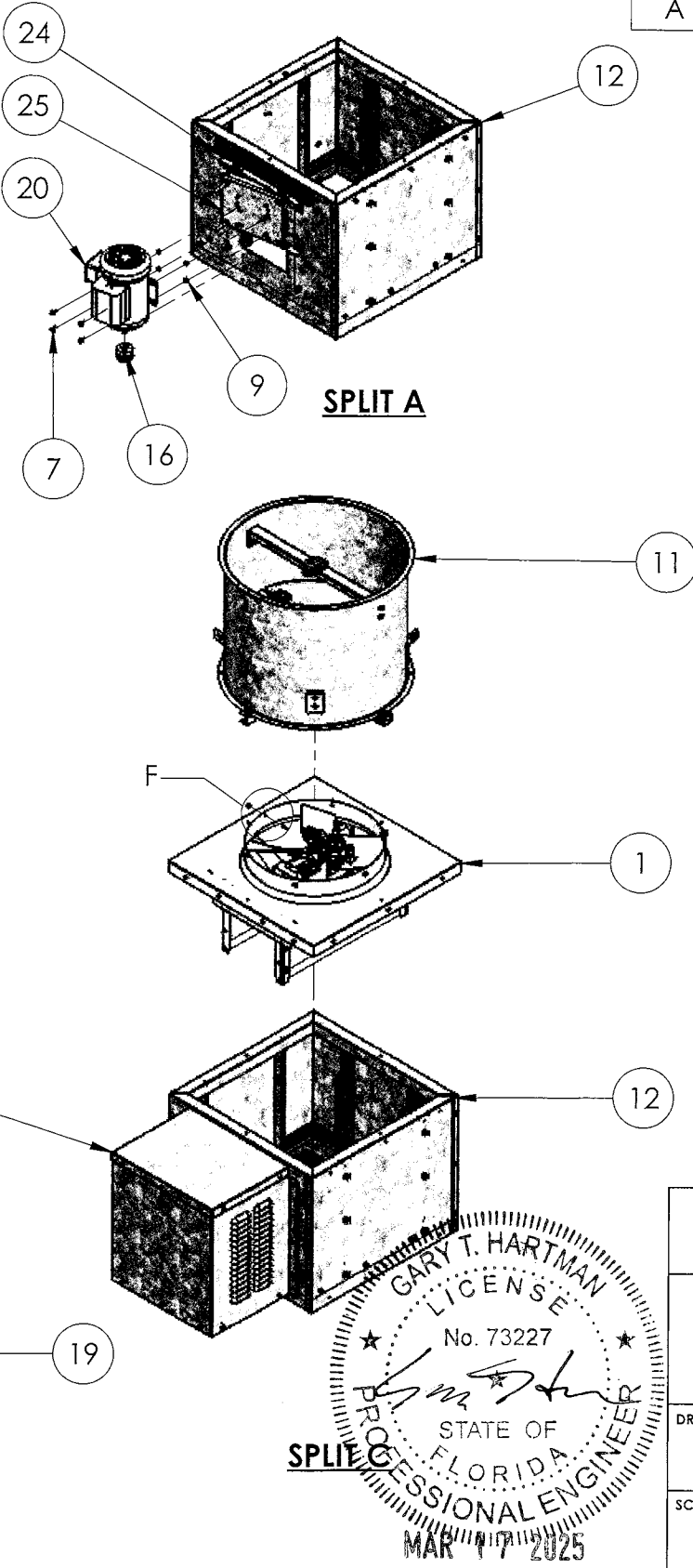
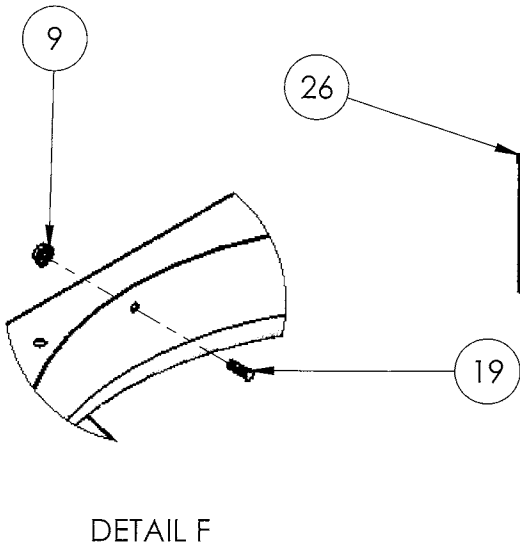
BILL OF MATERIALS			
ITEM NO.	PART NUMBER	DESCRIPTION	QTY.
1	41118	VENTURI-MOTOR STR WELDMENT	1
2	57089-0	BEARING	2
3	70299	SHAFT	1
4	55518-0	BOLT, WHIZ, .375-16 X 1.5	4
5	55502-0	NUT, WHIZ, 3/8-16	12
6	55267-0	5/16-18 X 3/4 HH TYPE FT	13
7	55696-0	HHCS WHIZ 1/4-20 0.75 G5	4
8	55641-0	BOLT WHIZ 1/4-20 X 1	1
9	55500-0	NUT WHIZ 1/4-20 LGFL	10
10	55533-0	.375-16UNC X 1.0 WHIZ BOLT	8
11	40868	WINDBAND MAIN ASM	1
12	40874	RAUMO PEDESTAL SUB ASSEMBLY	1
13	70313	BELT TUNNEL ASSEMBLY	1
14	70316	BEARING TUNNEL	1
15	PROPELLER (SEE TABLE)	PROPELLER	1
16	PULLEY	MOTOR PULLEY	1
17	PULLEY	FAN PULLEY	1
18	BELT	BELT	1
19	55640-0	1/4 " PEM R PRESS-IN STUD	6
20	MOTOR	MOTOR (AS PER ORDER)	1
21	41100	SHAFT SEAL SUB ASSEMBLY	1
22	55695-0	2"ODX3/8"ID STEEL ZINC	1
23	41114-02	KEY SHAFT DIA 0.75, LENGTH 3.00	1
24	70317	J BRACKET	1
25	70310	MOTOR MOUNTING ASSEMBLY	1
26	40878	MOTOR COVER	1

ASSEMBLY SEQUENCE:

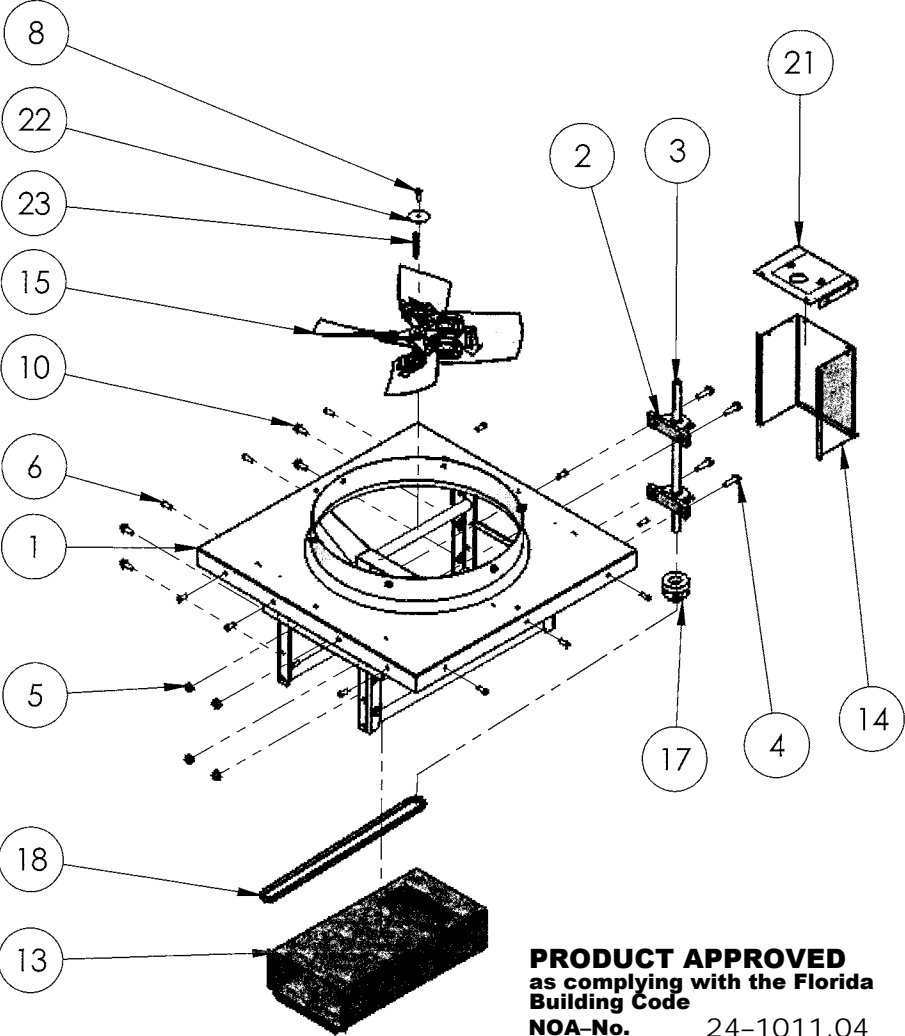
**SPLIT A**  
1) MOTOR COVER IS HIDDEN.

**SPLIT B**  
1) ARRANGE ITEM 11 AND 3 INLINE & ASSEMBLE

LEVEL-PRESSURE	PROP PART NO
1L	70364
2L	70368
1H	70382
2H	70357



REVISIONS			
REV	DESCRIPTION	DATE	APPROVED
A	ENGINEERING REVISION	11/20/2023	-



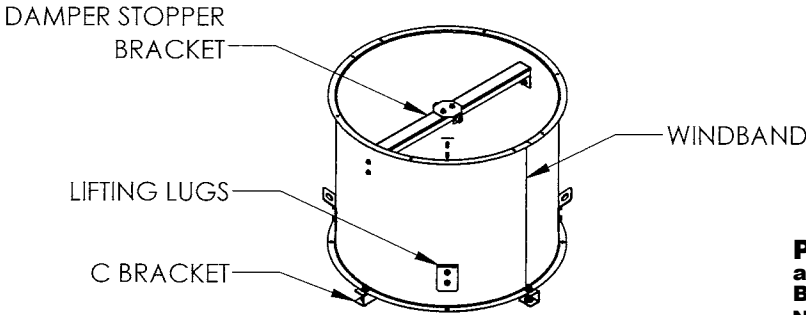
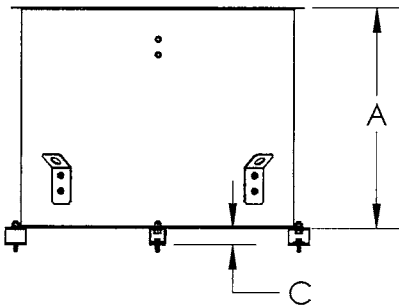
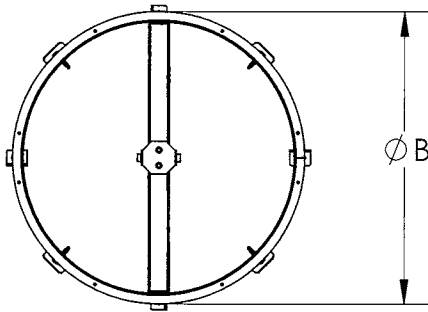
**PRODUCT APPROVED**  
as complying with the Florida  
Building Code  
NOA-No. 24-1011.04  
Approval Date 04/24/2025  
By *[Signature]*  
Miami-Dade Product Control

PennBarry 605 Shiloh RD Plano, TX 75074

RAUMO ASSEMBLY EXPLODED

DRAWN:	MAHESH	DWG NO.	XXX	REV	A
SCALE	NTS	DATE	11/20/2023	SHEET	5 OF 9

MATERIAL							
UNIT	A	B	C	WINDBAND	LIFTING LUG	DAMPER STOPPER BRACKET	C BRACKET
RAU/RAUMO 20	21.28	28.25	1.60	20 GA GALV STEEL	12 GA GALV STEEL	12 GA GALV STEEL	12 GA GALV STEEL
RAU/RAUMO 24	23.87	30.50	1.92				
RAU/RAUMO 30	26.08	38.50	2.40				
RAU/RAUMO 36	30.14	42.50	2.87				
RAU/RAUMO 42	37.04	50.75	3.35				
RAU/RAUMO 48	37.24	57.00	3.84				
RAU/RAUMO 54	40.83	61.88	4.32		10 GA GALV STEEL		
RAU/RAUMO 60	44.39	70.88	4.80				

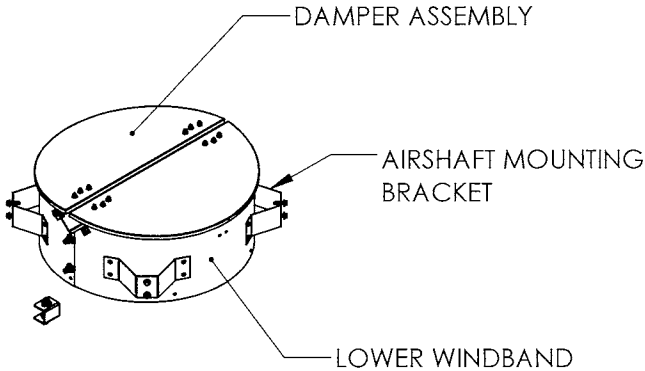
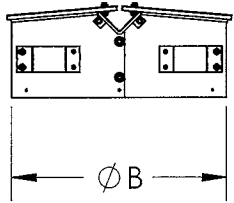
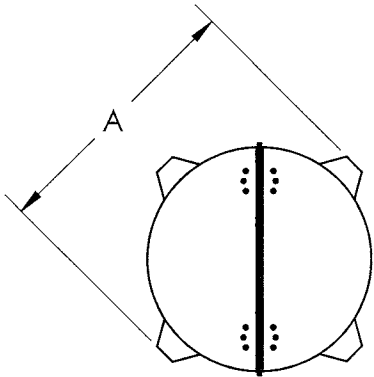


WINDBAND ASSEMBLY

**PRODUCT APPROVED**  
as complying with the Florida  
Building Code  
NOA-No. 24-1011.04  
Approval Date 04/24/2025  
By *[Signature]*  
Miami-Dade Product Control

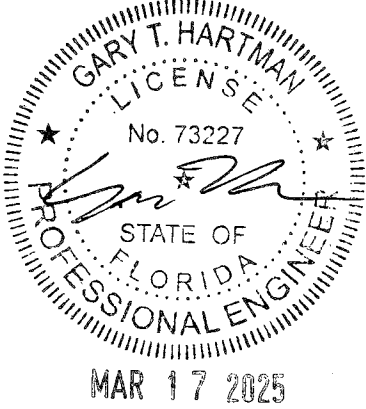
REVISIONS			
REV	DESCRIPTION	DATE	APPROVED
A	ENGINEERING REVISION	11/20/2023	-

MATERIAL				
UNIT	A	B	LOWER WINDBAND	AIRSHAFT BRACKET
RAU/RAUMO 20	26.19	20.77	18 GA GALV STEEL	18 GA GALV STEEL
RAU/RAUMO 24	28.41	24.84		
RAU/RAUMO 30	36.41	30.84		
RAU/RAUMO 36	40.46	36.90		
RAU/RAUMO 42	47.69	42.99		
RAU/RAUMO 48	53.94	49.06		
RAU/RAUMO 54	58.70	55.12		16 GA GALV STEEL
RAU/RAUMO 60	67.71	61.13		



LOWER WINDBAND WITH DAMPER

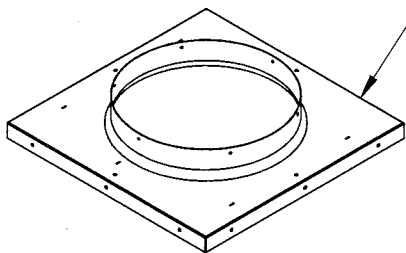
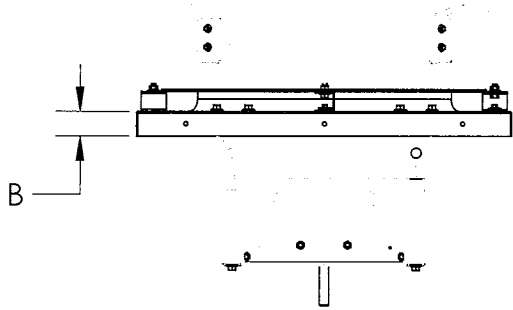
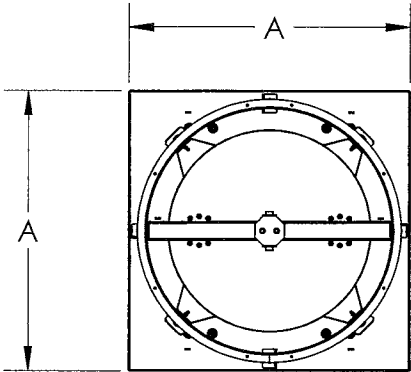
ALL DIMENSIONS ARE IN INCHES



PennBarry 605 Shiloh RD Plano, TX 75074			
<b>RAU/RAUMO</b> <b>WINDBAND ASSEMBLY &amp; LOWER WINDBAND</b> <b>WITH DAMPER ASSEMBLY</b>			
DRAWN: MAHESH	DWG NO. XXX	REV A	
SCALE NTS	DATE 11/20/2023	SHEET 6 OF 9	



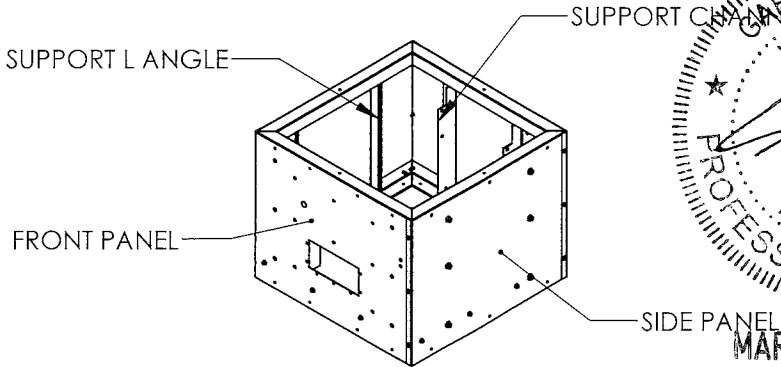
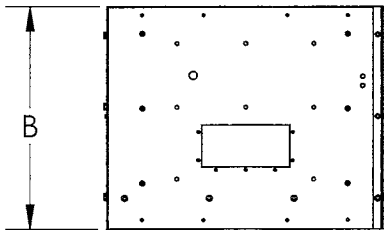
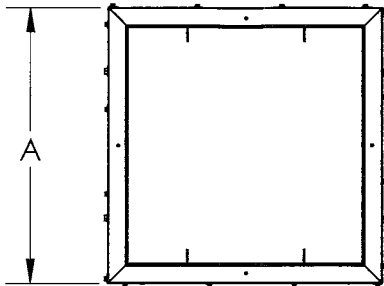
UNIT	A	B	MATERIAL (VENTURI PANEL)
RAU/RAUMO 20	30.13	2.00	16 GA GALV STEEL
RAU/RAUMO 24	34.13	2.00	
RAU/RAUMO 30	40.13	2.00	
RAU/RAUMO 36	46.13	2.00	
RAU/RAUMO 42	52.16	2.00	14 GA GALV STEEL
RAU/RAUMO 48	58.16	2.00	
RAU/RAUMO 54	66.66	2.00	
RAU/RAUMO 60	72.66	2.00	



RAU/RAUMO VENTURI PANEL

**PRODUCT APPROVED**  
as complying with the Florida  
Building Code  
NOA-No. 24-1011.04  
Approval Date 04/24/2025  
By *[Signature]*  
Miami-Dade Product Control

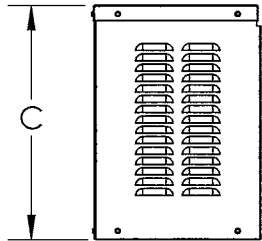
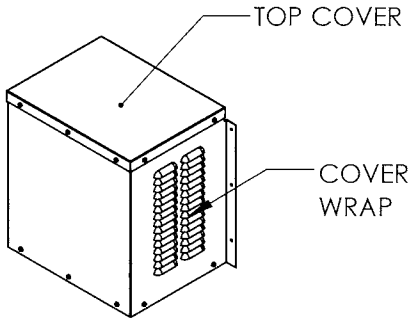
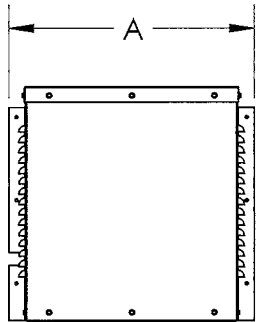
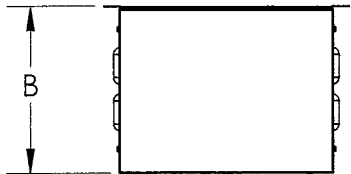
UNIT	A	B	MATERIAL	
			SUPPORT CHANNEL	PANELS
RAUMO 20	29.65	23.90	12 GA GALV STEEL	18 GA GALV STEEL
RAUMO 24	33.65	23.90		
RAUMO 30	39.65	27.87		
RAUMO 36	45.65	27.87		
RAUMO 42	51.65	27.87		
RAUMO 48	57.65	27.87		
RAUMO 54	66.12	29.62		
RAUMO 60	72.12	31.37		



PEDESTAL ASSEMBLY

REVISIONS			
REV	DESCRIPTION	DATE	APPROVED
A	ENGINEERING REVISION	11/20/2023	-

UNIT	A	B	C	MATERIAL
RAUMO 20	23.65	16.14	22.64	18 GA GALV STEEL
RAUMO 24				
RAUMO 30	27.98	16.10	27.52	
RAUMO 36				
RAUMO 42				
RAUMO 48	31.98	18.09	27.52	
RAUMO 54				
RAUMO 60				

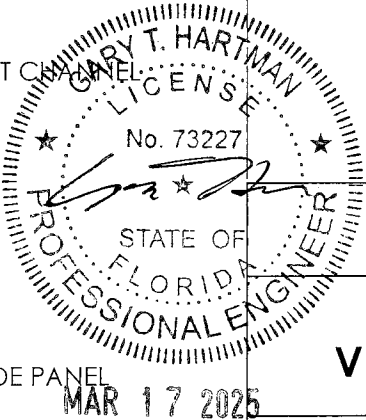


MOTOR COVER

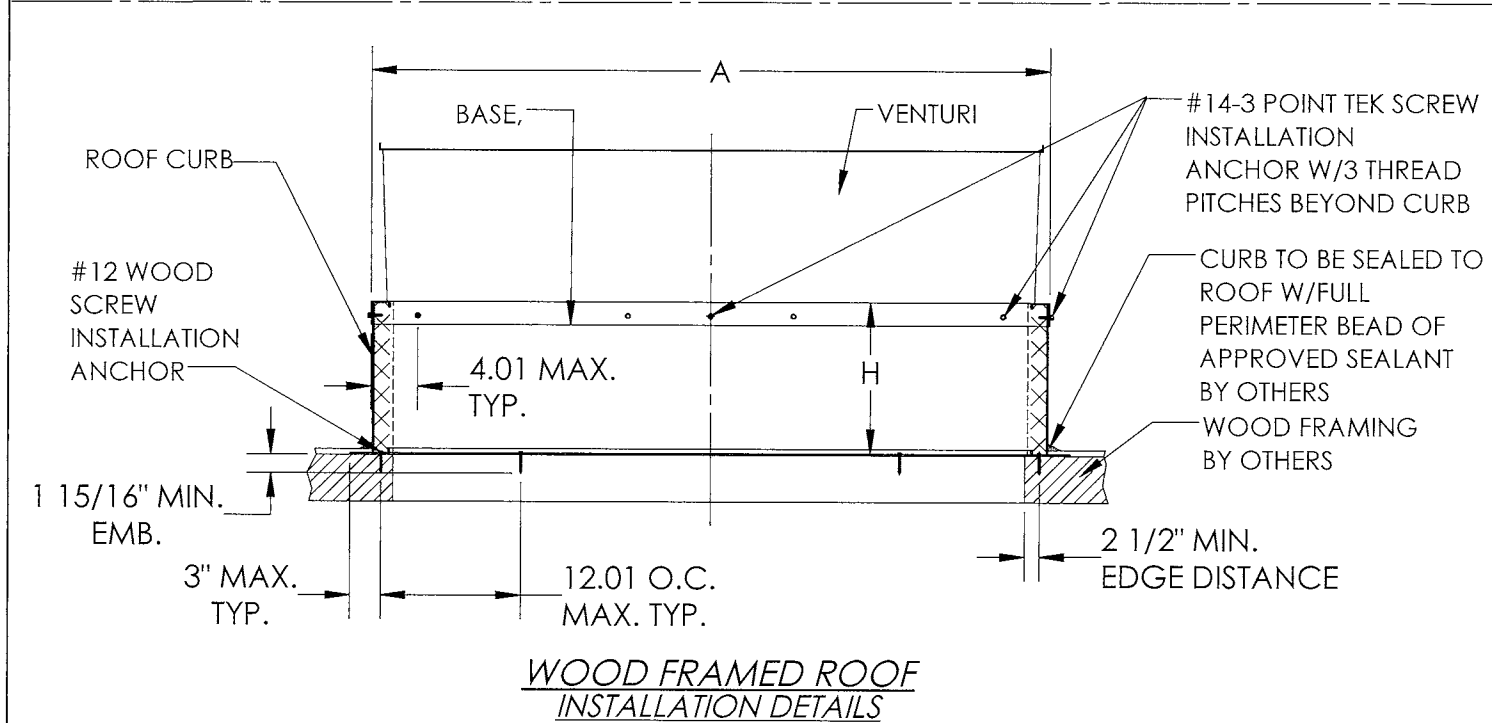
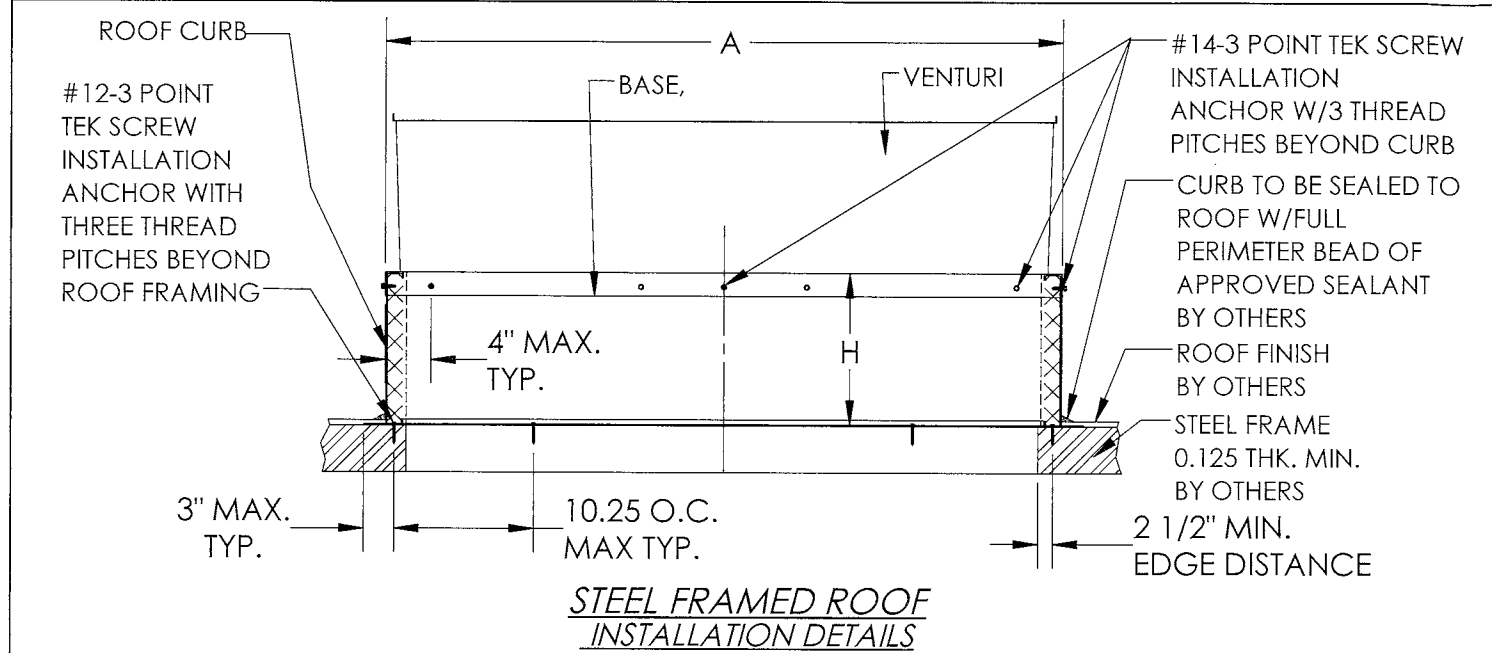
ALL DIMENSIONS ARE IN INCHES

PennBarry 605 Shiloh RD Plano, TX 75074

RAU/RAUMO  
VENTURI PANEL , PEDESTAL & MOTOR COVER



DRAWN:	MAHESH	DWG NO.	XXX	REV	A
SCALE	NTS	DATE	11/20/2023	SHEET	7 OF 9

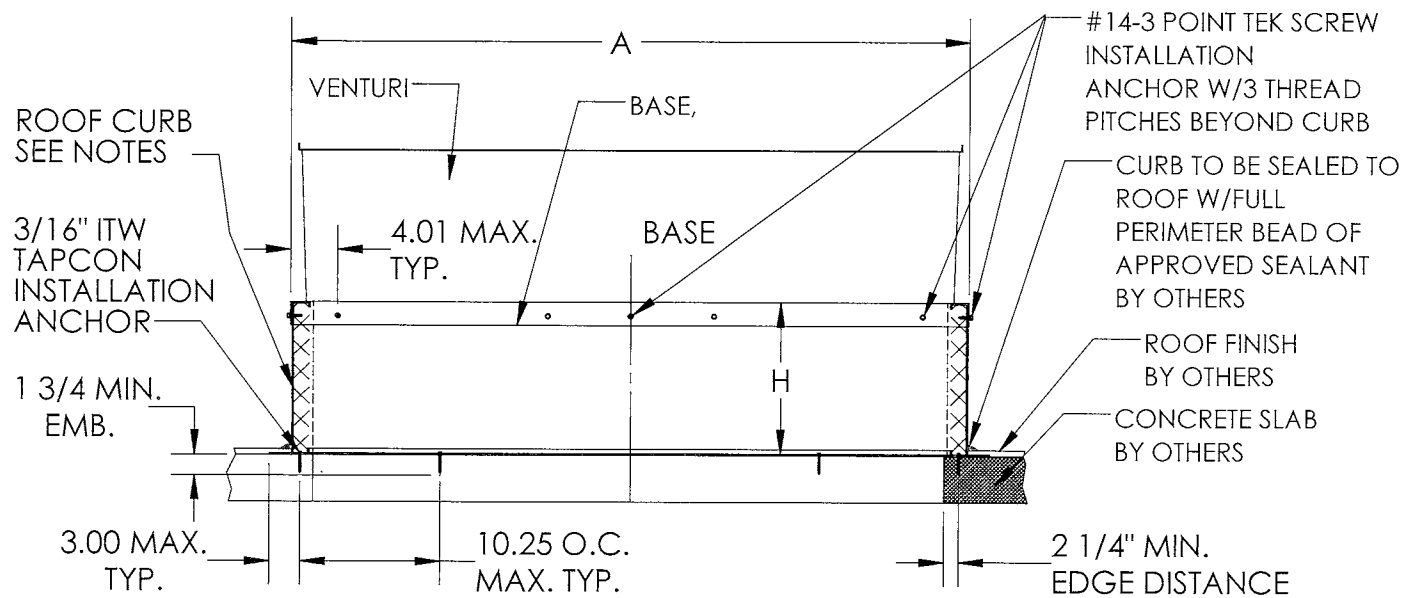


UNIT	A	H
RAU/RAUMO 20	28.50	8 / 12 / 16 / 18 / 24
RAU/RAUMO 24	32.50	
RAU/RAUMO 30	38.50	
RAU/RAUMO 36	44.50	
RAU/RAUMO 42	50.50	
RAU/RAUMO 48	56.50	
RAU/RAUMO 54	65.00	
RAU/RAUMO 60	71.00	

NOTES:

- ALL FOUR SIDES OF CURB AND BASE ARE ANCHORED IDENTICALLY.
- ROOF CURB IS INSTALLED TO ROOF FIRST. FAN IS THEN MOUNTED TO CURB USING THREE(3) #14-3POINT TEK SCREWS PER SIDE AS SHOWN ABOVE.

REVISIONS			
REV	DESCRIPTION	DATE	APPROVED
B	ENGINEERING REVISION	02/25/2025	-

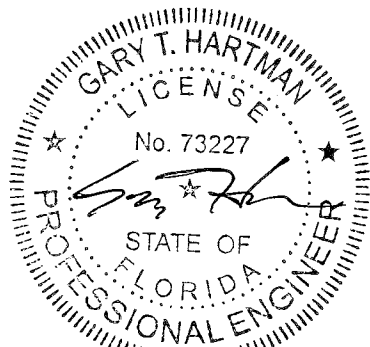


**CONCRETE SLAB ROOF INSTALLATION DETAILS**

**PRODUCT APPROVED**  
as complying with the Florida Building Code  
NOA-No. 24-1011.04

Approval Date 04/24/2025

By   
Miami-Dade Product Control



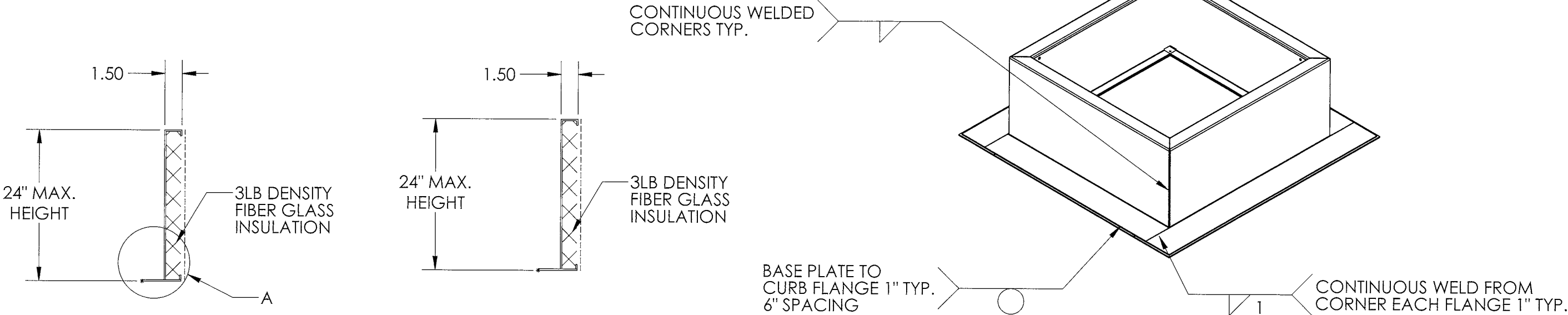
MAR 17 2025

PennBarry 605 Shiloh RD Plano, TX 75074

**RAU/RAUMO ROOF CURB INSTALLATION DETAILS**

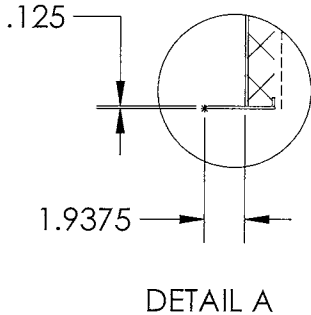
DRAWN:	DWG NO.	REV
MAHESH	XXX	A
SCALE	DATE	SHEET
NTS	11/20/2023	8 OF 9

REVISIONS			
REV	DESCRIPTION	DATE	APPROVED
A	ENGINEERING REVISION	11/20/2023	-



**ROOF CURB**  
 18GA G-90 GALV. STEEL  
 MI VALUE : X= 20.5405  
 Y=0.3060

**OPTIONAL ROOF CURB**  
 ALUMINIUM 3003-H14 10GA, 0.125" THK.  
 MI VALUE : X= 51.1390  
 Y= 0.7384



**PRODUCT APPROVED**  
 as complying with the Florida  
 Building Code  
 NOA-No. 24-1011.04  
 Approval Date 04/24/2025  
 By *[Signature]*  
 Miami-Dade Product Control



PennBarry 605 Shiloh RD Plano, TX 75074			
<b>RAU/RAUMO</b> <b>ROOF CURB INSTALLATION DETAILS</b>			
DRAWN:	DWG NO.	REV	
MAHESH	XXX	A	
SCALE	DATE	SHEET	
NTS	11/20/2023	9 OF 9	