



DEPARTMENT OF REGULATORY AND ECONOMIC RESOURCES (RER)
BOARD AND CODE ADMINISTRATION DIVISION

**MIAMI-DADE COUNTY
PRODUCT CONTROL SECTION**

11805 SW 26 Street, Room 208
Miami, Florida 33175-2474
T (786) 315-2590 F (786) 315-2599

www.miamidade.gov/economy

NOTICE OF ACCEPTANCE (NOA)

Seasons-4, Inc.
4500 Industrial Access Road
Douglasville, Georgia 30134-3949

SCOPE:

This NOA is being issued under the applicable rules and regulations governing the use of construction materials. The documentation submitted has been reviewed and accepted by Miami-Dade County RER- Product Control Section to be used in Miami Dade County and other areas where allowed by the Authority Having Jurisdiction (AHJ).

This NOA shall not be valid after the expiration date stated below. The Miami-Dade County Product Control Section (In Miami Dade County) and/or the AHJ (in areas other than Miami Dade County) reserve the right to have this product or material tested for quality assurance purposes. If this product or material fails to perform in the accepted manner, the manufacturer will incur the expense of such testing and the AHJ may immediately revoke, modify, or suspend the use of such product or material within their jurisdiction. RER reserves the right to revoke this acceptance if it is determined by Miami-Dade County Product Control Section that this product or material fails to meet the requirements of the applicable building code.

This product is approved as described herein and has been designed to comply with the High Velocity Hurricane Zone of the Florida Building Code.

DESCRIPTION: HVAC Air Handling Unit

APPROVAL DOCUMENT: Drawing No. MDTC, titled "Test Cabinet-NOA", sheets 1 through 13 of 13, prepared by Seasons-4, Inc., dated April 21, 2013, Last revision #6, dated December 02, 2023, signed and sealed by Scott Wolters, P.E., on December 04, 2023, bearing the Miami-Dade County Product Control Renewal stamp with the Notice of Acceptance number and the expiration date by the Miami-Dade County Product Control Section.

MISSILE IMPACT RATING: Large and Small Missile Impact Resistant

LABELING: Each unit shall bear a permanent label with the manufacturer's name or logo, city, state, and the following statement: "Miami-Dade County Product Control Approved", unless otherwise noted herein.

RENEWAL of this NOA shall be considered after a renewal application has been filed and there has been no change in the applicable building code negatively affecting the performance of this product.

TERMINATION of this NOA will occur after the expiration date or if there has been a revision or change in the materials, use, and/or manufacture of the product or process. Misuse of this NOA as an endorsement of any product, for sales, advertising or any other purposes shall automatically terminate this NOA. Failure to comply with any section of this NOA shall be cause for termination and removal of NOA.

ADVERTISEMENT: The NOA number preceded by the words Miami-Dade County, Florida, and followed by the expiration date may be displayed in advertising literature. If any portion of the NOA is displayed, then it shall be done in its entirety.

INSPECTION: A copy of this entire NOA shall be provided to the user by the manufacturer or its distributors and shall be available for inspection at the job site at the request of the Building Official.

This NOA **renews NOA #23-1207.06** and consists of this page 1, evidence submitted pages E-1, E-2 & E-3 as well as approval document mentioned above.

The submitted documentation was reviewed by **Helmy A. Makar, P.E., M.S.**



Helmy A. Makar
01/30/2025

NOA No. 24-1021.02
Expiration Date: 12/24/2029
Approval Date: 01/30/2025
Page 1

NOTICE OF ACCEPTANCE: EVIDENCE SUBMITTED

1. EVIDENCE SUBMITTED UNDER PREVIOUS APPROVAL # 14-1202.04

A. DRAWINGS

1. Drawing No. MDTC-001, titled "Cabinet with Casing", 13 sheets, prepared by Seasons 4, Inc., dated 04/21/13, revision #4, signed and sealed by Scott Wolters, P.E., on 10/24/2014.

B. TESTS

1. Test reports on 1) Uniform Static Air Pressure Test, Loading per TAS 202-94, 2) Large Missile Impact Test per TAS 201-94, 3) Cyclic Wind Pressure Loading per TAS 203-94, along with marked-up drawings and installation diagram of Custom Air Handling Cabinet, prepared by Architectural Testing, Test Report No. C9425.01-550-18, dated 11/15/13, signed and sealed by Vinu J. Abraham, P.E.
2. Test reports on Racking Load Test per ASTM E72, along with marked-up drawings and installation diagram of Custom Air Handling Cabinet, prepared by Architectural Testing, Test Report # D2660.01-119-18, dated 01/08/14, signed & sealed by Gary T. Hartman, P.E.

C. CALCULATIONS

1. Calculation titled Seasons 4 Custom Air Handling Cabinet, 4 pages, dated May 12, 2014, prepared by Wolters Engineering, signed and sealed by Scott Wolters, P.E.

D. QUALITY ASSURANCE

1. By Miami-Dade County Department of Regulatory and Economic Resources (RER).

E. MATERIAL CERTIFICATIONS

1. None.

F. STATEMENTS

1. Compliance Letter with the **FBC-2010**, dated 01/22/14, signed, sealed by Scott Wolters, P.E.

2. EVIDENCE SUBMITTED UNDER PREVIOUS APPROVAL # 16-0525.03

A. DRAWINGS

1. Drawing No. MDTC, titled "Test Cabinet-NOA", 13 sheets, prepared by Seasons-4, Inc., dated 04/21/2013, revision #5, dated 05/20/2016, signed & sealed by Scott Wolters, P.E.

B. TESTS

1. None.

C. CALCULATIONS

1. None.

D. QUALITY ASSURANCE

1. By Miami-Dade County Department of Regulatory and Economic Resources (RER).

E. MATERIAL CERTIFICATIONS

1. None.

F. STATEMENTS

1. Compliance Letter with the **FBC-2014**, dated 05/20/16, signed, sealed by Scott Wolters, P.E.

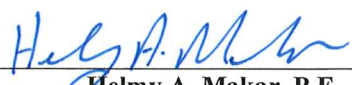
3. EVIDENCE SUBMITTED UNDER PREVIOUS APPROVAL # 17-1218.03

A. DRAWINGS

1. None.

B. TESTS

1. None.


Helmy A. Makar, P.E., M.S.
Product Control Section Supervisor
NOA No. 24-1021.02
Expiration Date: 12/24/2029
Approval Date: 01/30/2025

NOTICE OF ACCEPTANCE: EVIDENCE SUBMITTED

C. CALCULATIONS

1. None.

D. QUALITY ASSURANCE

1. By Miami-Dade County Department of Regulatory and Economic Resources (RER).

E. MATERIAL CERTIFICATIONS

1. None.

F. STATEMENTS

1. Compliance Letter with the **FBC-2017**, dated 11/29/17, signed, sealed by Scott Wolters, P.E.

4. EVIDENCE SUBMITTED UNDER PREVIOUS APPROVAL # 19-0711.08

A. DRAWINGS

1. None.

B. TESTS

1. None.

C. CALCULATIONS

1. None.

D. QUALITY ASSURANCE

1. By Miami-Dade County Department of Regulatory and Economic Resources (RER).

E. MATERIAL CERTIFICATIONS

1. None.

F. STATEMENTS

1. Compliance Letter with the **FBC-2017**, dated 11/29/17, signed, sealed by Scott Wolters, P.E.

5. EVIDENCE SUBMITTED UNDER PREVIOUS APPROVAL # 20-0929.16

A. DRAWINGS

1. Drawing No. MDTC, titled "Test Cabinet-NOA", sheets 1 through 13 of 13, prepared by Seasons-4, Inc., dated 04/21/2013, revision #5, dated 05/20/2016, signed and sealed by Scott Wolters, P.E., on 09/29/2020.

B. TESTS

1. None.

C. CALCULATIONS

1. None.

D. QUALITY ASSURANCE

1. By Miami-Dade County Department of Regulatory and Economic Resources (RER).

E. MATERIAL CERTIFICATIONS

1. None.

F. STATEMENTS

1. Compliance Letter with the **FBC-2020**, dated 09/29/20, signed and sealed by Scott Wolters, P.E.



Helmy A. Makar, P.E., M.S.
Product Control Section Supervisor
NOA No. 24-1021.02
Expiration Date: 12/24/2029
Approval Date: 01/30/2025

NOTICE OF ACCEPTANCE: EVIDENCE SUBMITTED

6. EVIDENCE SUBMITTED UNDER PREVIOUS APPROVAL # 23-1207.06

A. DRAWINGS

1. *Drawing No. MDTC, titled "Test Cabinet-NOA", sheets 1 through 13 of 13, prepared by Seasons-4, Inc., dated April 21, 2013, Last revision #6, dated December 02, 2023, signed and sealed by Scott Wolters, P.E., on December 04, 2023.*

B. TESTS

1. *None.*

C. CALCULATIONS

1. *None.*

D. QUALITY ASSURANCE

1. *By Miami-Dade County Department of Regulatory and Economic Resources (RER).*

E. MATERIAL CERTIFICATIONS

1. *None.*

F. STATEMENTS

1. *Compliance Letter with the FBC-2023, dated 12/04/23, signed and sealed by Scott Wolters, P.E. on 12/04/23.*

7. NEW EVIDENCE SUBMITTED

A. DRAWINGS

1. *None.*

B. TESTS

1. *None.*

C. CALCULATIONS

1. *None.*

D. QUALITY ASSURANCE

1. *By Miami-Dade County Department of Regulatory and Economic Resources (RER).*

E. MATERIAL CERTIFICATIONS

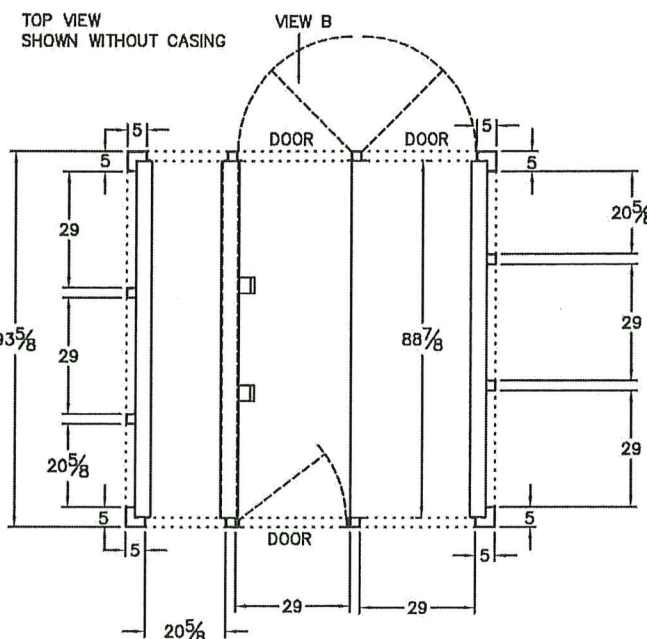
1. *None.*

F. STATEMENTS

1. *Compliance Letter with the FBC-2023, dated 12/04/23, signed and sealed by Scott Wolters, P.E. on 12/04/23.*



Helmy A. Makar, P.E., M.S.
Product Control Section Supervisor
NOA No. 24-1021.02
Expiration Date: 12/24/2029
Approval Date: 01/30/2025



ALLOWABLE DESIGN LOADS

WINDLOADS: WALLS +/-100 PSF
ROOF +/-100 PSF

MAX. SHEAR LOAD PER LINEAL FT OF WALL:
STEEL LINED PANELS 287 LB/FT
ALUMINUM LINED PANELS 293 LB/FT

TENSILE CAPACITY OF PANELS:
STEEL LINERS 2082 lb
ALUMINUM LINERS 2,285 lb

COMPRESSION CAPACITY OF PANELS:
STEEL LINER 3044 lb
ALUMINUM LINER 2416 lb

MAX. WALL PANEL SIZE: 130" HIGH X 34" WIDE AND 2" THICK

WALL PANEL OUTSIDE CASING MATERIAL .040" 3003 H14 ALUMINUM

WALL PANEL INSIDE LINER MATERIAL: .040" 3003 H14 ALUMINUM
OR
A653 COMMERCIAL STEEL (.023) 24 GA GALVANIZED STEEL.

GENERAL NOTES:

1. THIS PRODUCT HAS BEEN DESIGNED AND TESTED TO MEET THE REQUIREMENTS OF THE 8TH EDITION (2023) FLORIDA BUILDING CODE, INCLUDING THE HVHZ PROVISIONS.
2. THIS PRODUCT IS LARGE MISSILE IMPACT RESISTANT. SHUTTERS ARE NOT REQUIRED.
3. THE STRUCTURAL ADEQUACY OF THE ROOF TO SUPPORT THIS EQUIPMENT IS NOT A PART OF THIS APPROVAL, AND SHOULD BE REVIEWED BY THE ENGINEER OF RECORD.

PRODUCT REVISED

as complying with the Florida

Building Code

Acceptance No 23-1207.06

Expiration Date 12/24/24

By *Hedy A. Miller*
Miami Dade Product Control

PRODUCT RENEWED

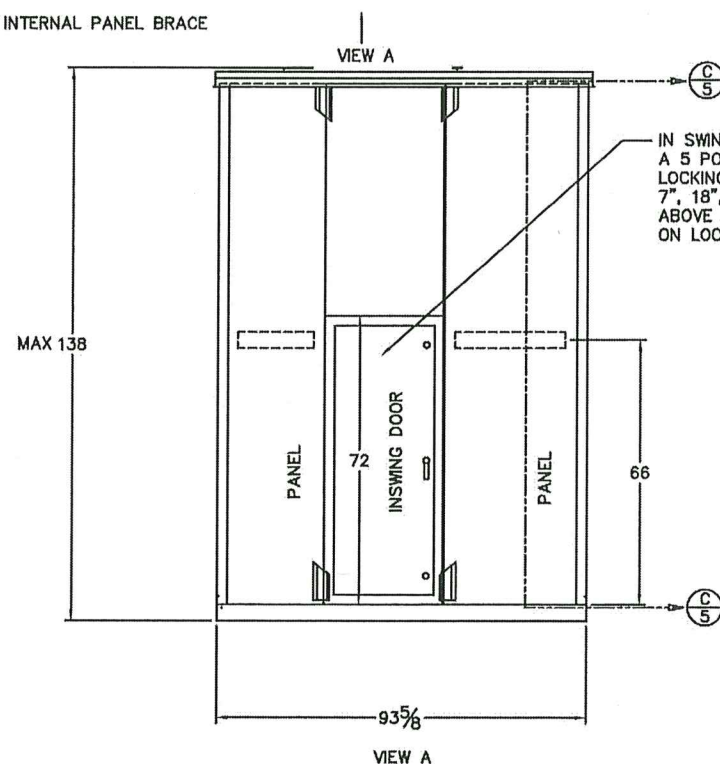
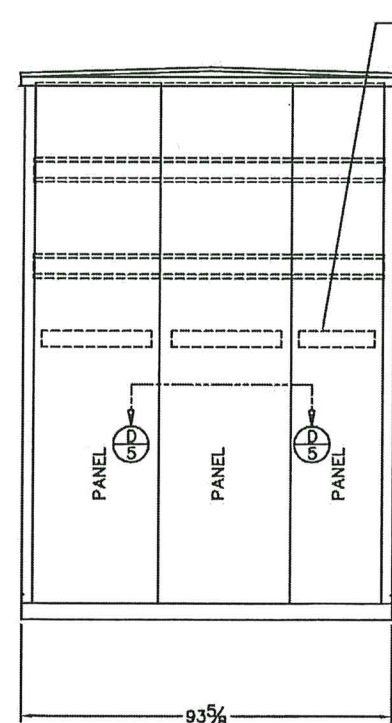
as complying with the Florida

Building Code

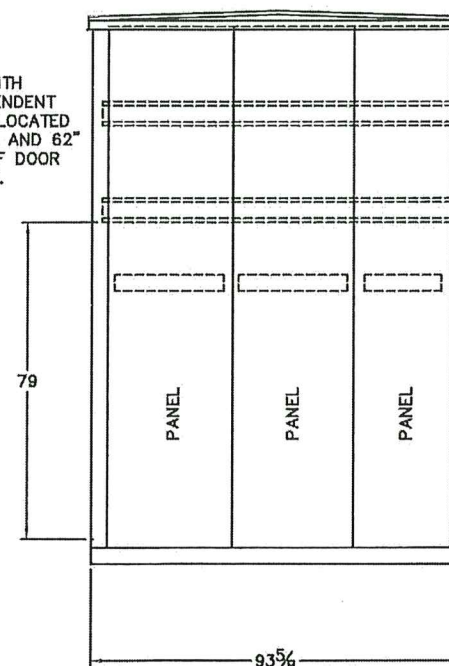
Acceptance No 24-1021.02

Expiration Date 12/24/2029

By *Hedy A. Miller*
Miami Dade Product Control

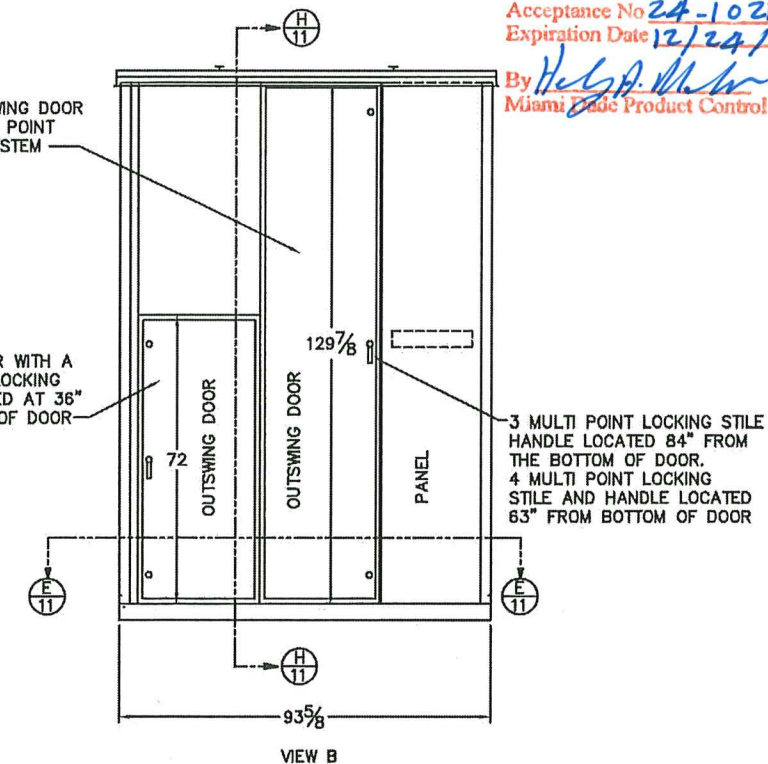


IN SWING DOOR WITH
A 5 POINT INDEPENDENT
LOCKING SYSTEM LOCATED
7", 18", 34", 46", AND 62"
ABOVE BOTTOM OF DOOR
ON LOCKING STILE.



FULL SIZE OUTSWING DOOR
WITH A 3 AND 4 POINT
MULTILOCKING SYSTEM

OUTSWING DOOR WITH A
4 POINT MULTILOCKING
SYSTEM LOCATED AT 36"
FROM BOTTOM OF DOOR



3 MULTI POINT LOCKING STILE
HANDLE LOCATED 84" FROM
THE BOTTOM OF DOOR.
4 MULTI POINT LOCKING
STILE AND HANDLE LOCATED
63" FROM BOTTOM OF DOOR

LEGEND

(H) HINGED ACCESS DOOR

UNIT (COMPLETE ASSEMBLY) REFER TO DRAWING 5 FOR SECTION C-C

J: \B500-B599\B505\Drafting\TESTCABINET-NOA

REV. #	BY	DATE	DESCRIPTION
2	D.R.	04/29/2013	CHANGED FROM DETAIL CC AND DD TO SECTION CC AND DD.
3	D.R.	05/09/2013	INCREASED WIDTH OF UNIT.
4	D.R.	10/09/2013	REVISED DOORS AND PANELS.
5	D.R.	05/20/2016	2014 CODE UPDATE
6	D.R.	12/2/2023	2023 CODE UPDATE

SCOTT WOLTERS
FL PE# 62354

WOLTERS ENGINEERING
(COA# 27194)
15211 97TH ROAD N
WEST PALM BEACH, FL 33412
PH/FAX: (561) 225-1982

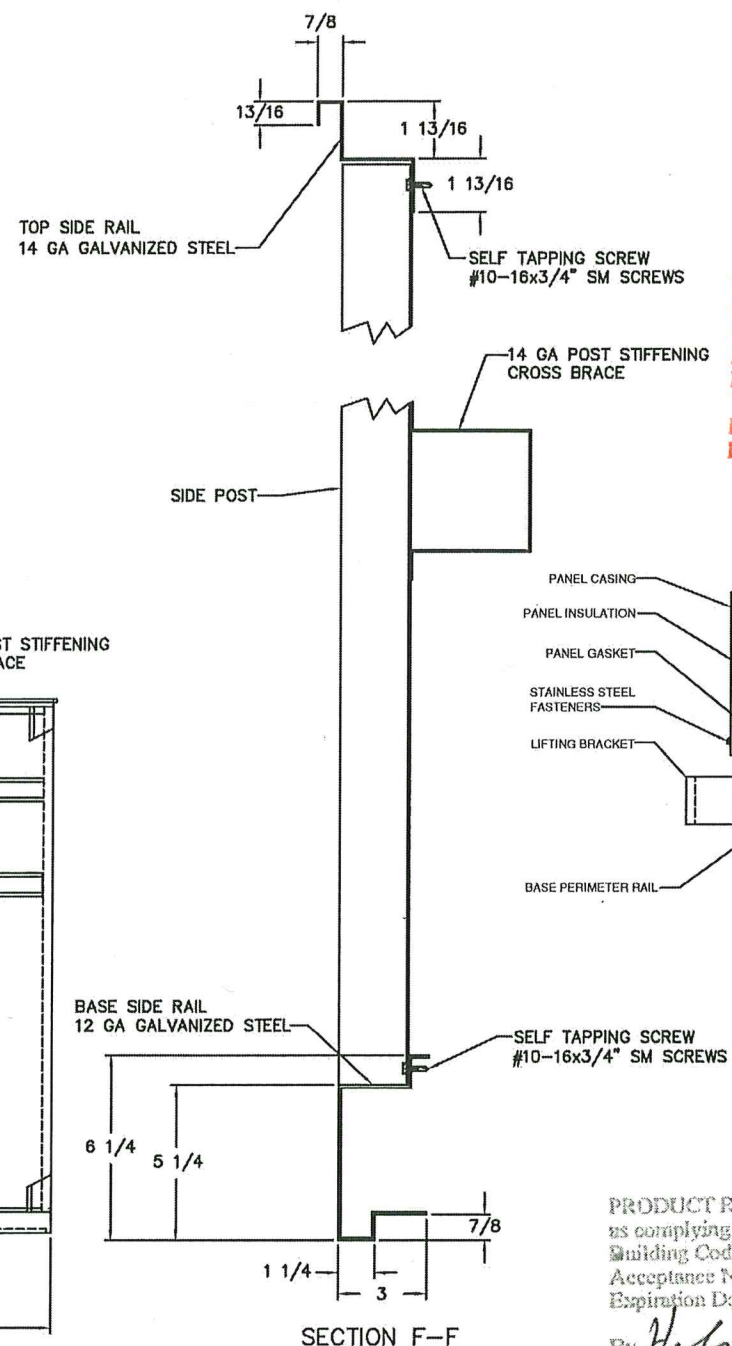


DIMENSIONAL DATA

MIAMI DADE TEST CABINET
MIAMI, FL

MDTC-001
CABINET WITH CASING

DRAWN BY	D.R.
DATE	04/21/2013
SCALE	N/A
REVISION #	4
DWG. NAME	TESTCABINET-NOA



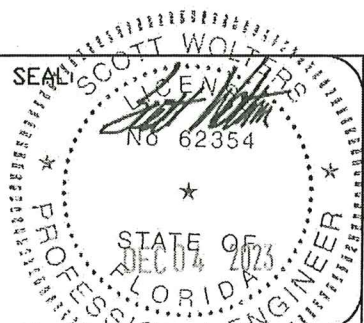
PRODUCT RENEWED
as complying with the Florida
Building Code
Acceptance No. 24-1021.02
Expiration Date 12/24/2029
By Heather M. Miller
Miami-Dade Product Control

PRODUCT REVISED
as complying with the Florida
Building Code
Acceptance No. 23-1207.06
Expiration Date 12/24/2024
By Hely A. Alvar
Miami-Dade Product Control

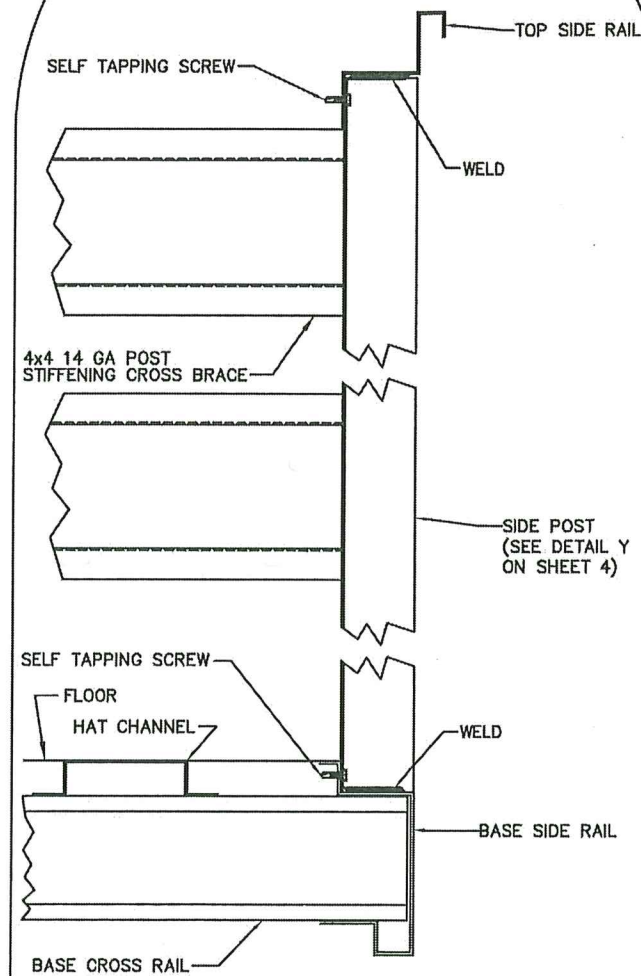
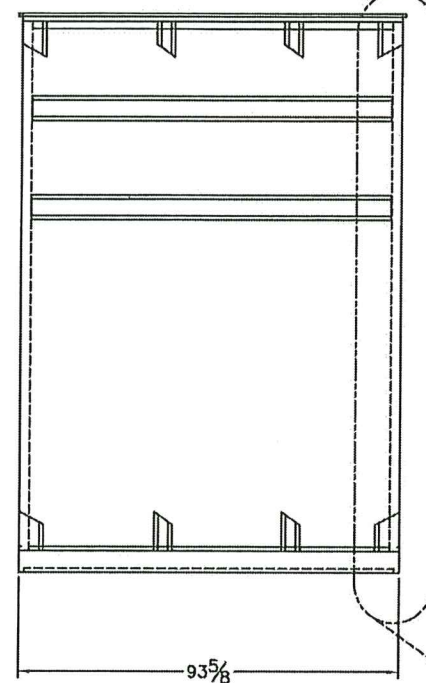
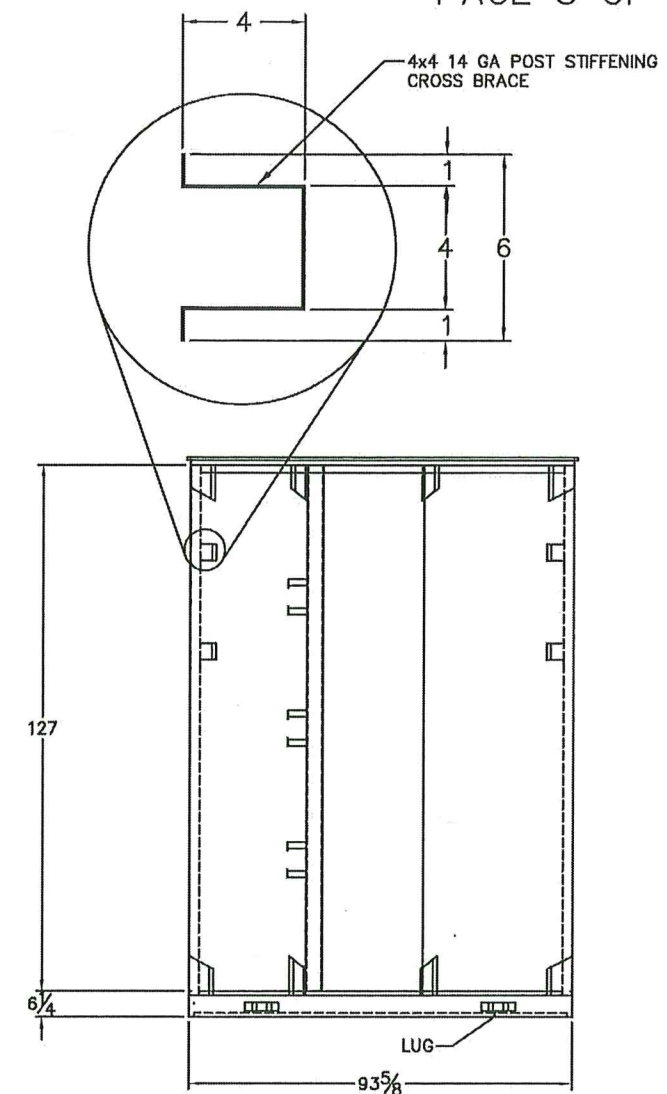
SEE DRAWING 4 FOR DETAILS A AND B

REV. #	BY	DATE	DESCRIPTION
0	D.R.	04/21/2013	ORIGINAL ISSUE
1	D.R.	05/09/2013	MADE UNIT 69 5/8 WIDER.
2	D.R.	10/09/2013	REVISED POST SPACING AND BRACING.
3	D.R.	08/27/2014	REVISED SECTION VIEW NOTE.
4	D.R.	10/7/2014	ADDED SCREWS.

WOLTERS ENGINEERING
(COA# 27194)
15211 97TH ROAD N
WEST PALM BEACH, FL 33412
PH/FAX: (561) 225-1982

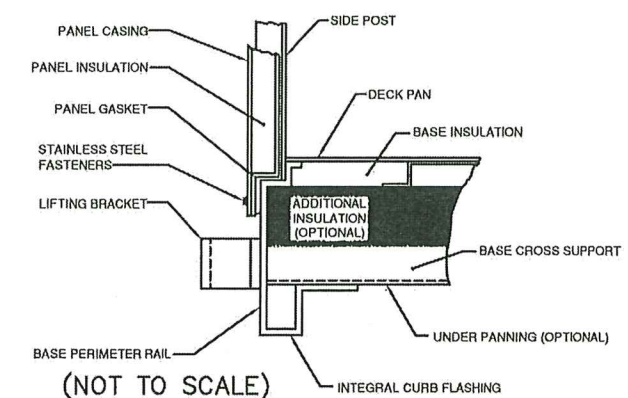


DIMENSIONAL DATA	DRAWN BY		D.R.
<i>MIAMI DADE TEST CABINET</i>	DATE		04/21/2013
<i>MIAMI, FL</i>	SCALE		N/A
<i>MDTC-002</i>	REVISION #	4	
<i>CABINET WITHOUT CASING</i>	DWG. NAME		TESTCABINET-NOA

FASTENERS: #10-16x3/4
STEELPOST ATTACHMENT TO
BASE AND TOP FRAME

PRODUCT RENEWED
as complying with the Florida
Building Code
Acceptance No. 24-1021.02
Expiration Date 12/24/2029
By *Helga A. M. M.*
Miami Dade Product Control

PRODUCT REVISED
as complying with the Florida
Building Code
Acceptance No. 23-1207.06
Expiration Date 12/24/2024
By *Helga A. M. M.*
Miami Dade Product Control

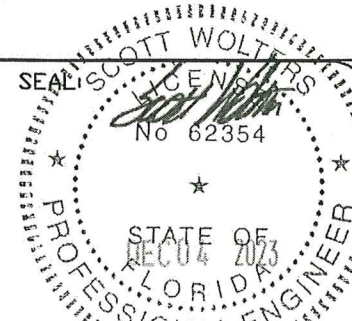


(NOT TO SCALE)

SEE PAGE 2

J:\B500-B599\B505\Drafting\TESTCABINET-NOA

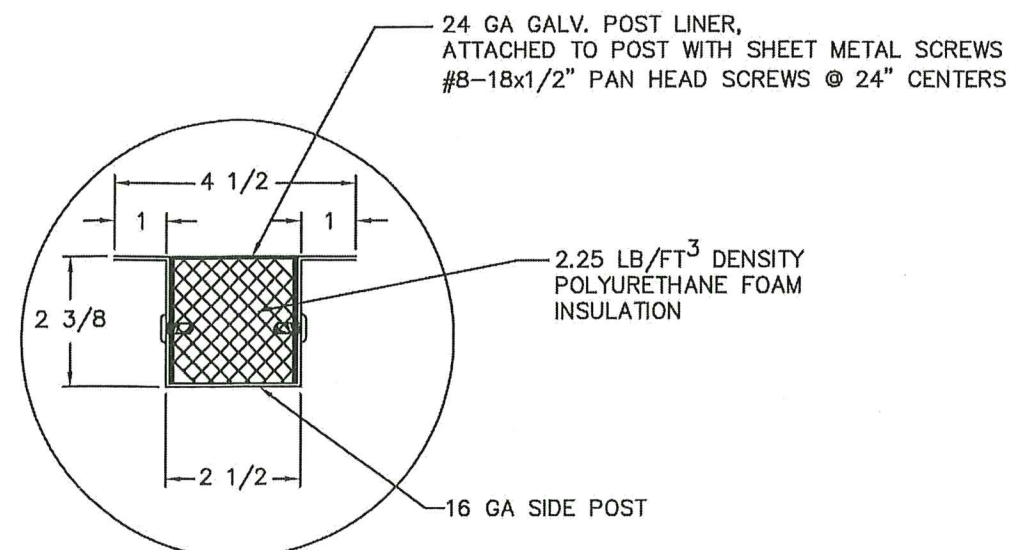
REV. #	BY	DATE	DESCRIPTION
0	DR	01/17/2014	ORIGINAL ISSUE
1	DR	04/29/2014	MADE CHANGES TO DRAWING.

SCOTT WOLTERS
FL PE# 62354WOLTERS ENGINEERING
(COA# 27194)
15211 97TH ROAD N
WEST PALM BEACH, FL 33412
PH/FAX: (561) 225-1982

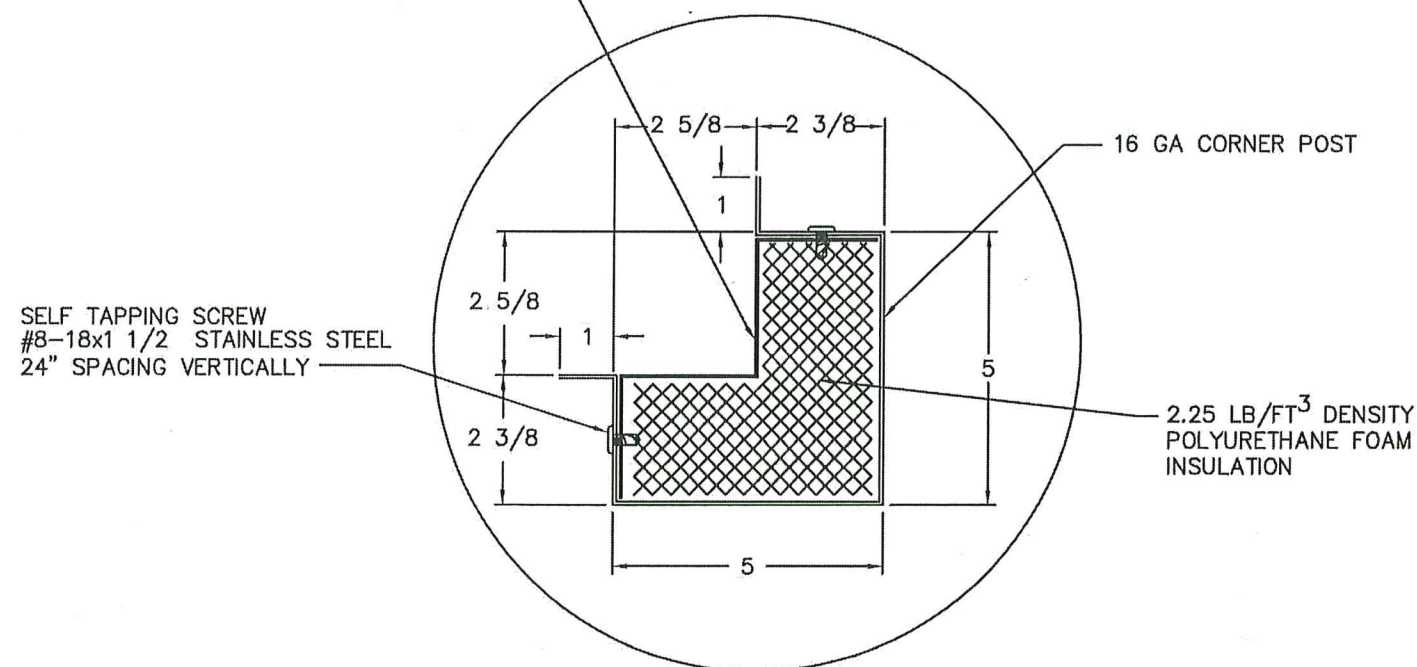
DIMENSIONAL DATA

MIAMI DADE TEST CABINET
MIAMI, FL
MDTC-003
CONSTRUCTION DETAILS

DRAWN BY	DR
DATE	10/7/2014
SCALE	N/A
REVISION #	1
DWG. NAME	TEST CABINET-NOA

DETAIL A
SIDE POST

24 GA GALV. POST LINER,
ATTACHED TO POST WITH SHEET METAL SCREWS
#8-18x1/2" PAN HEAD SCREWS @ 24" CENTERS

DETAIL B
CORNER POST

PRODUCT RENEWED
as complying with the Florida
Building Code
Acceptance No. 24-1021.02
Expiration Date 12/24/2029
By *Hely A. Miller*
Miami Dade Product Control

PRODUCT REVISED
as complying with the Florida
Building Code
Acceptance No. 23-1207.06
Expiration Date 12/24/2024
By *Hely A. Miller*
Miami Dade Product Control

LEGEND

① HINGED ACCESS DOOR

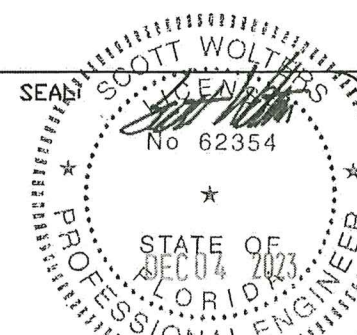
REFER TO DRAWING 2

J: \B500-B599\B505\Drafting\TESTCABINET-NOA

REV. #	BY	DATE	DESCRIPTION
0	D.R.	04/21/2013	ORIGINAL ISSUE
1	D.R.	05/09/2013	MADE UNIT 69 5/8 WIDER.
2	D.R.	10/09/2013	REVISED POST SPACING AND BRACING.
3	D.R.	08/27/2014	REVISED SECTION VIEW NOTE.
4	D.R.	10/7/2014	ADDED SCREWS.

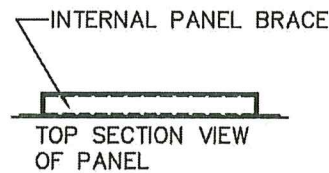
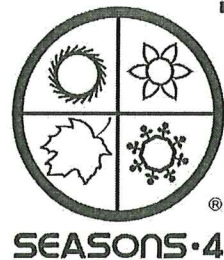
SCOTT WOLTERS
FL PE# 62354

WOLTERS ENGINEERING
(CDA# 27194)
15211 97TH ROAD N
WEST PALM BEACH, FL 33412
PH/FAX: (561) 225-1982

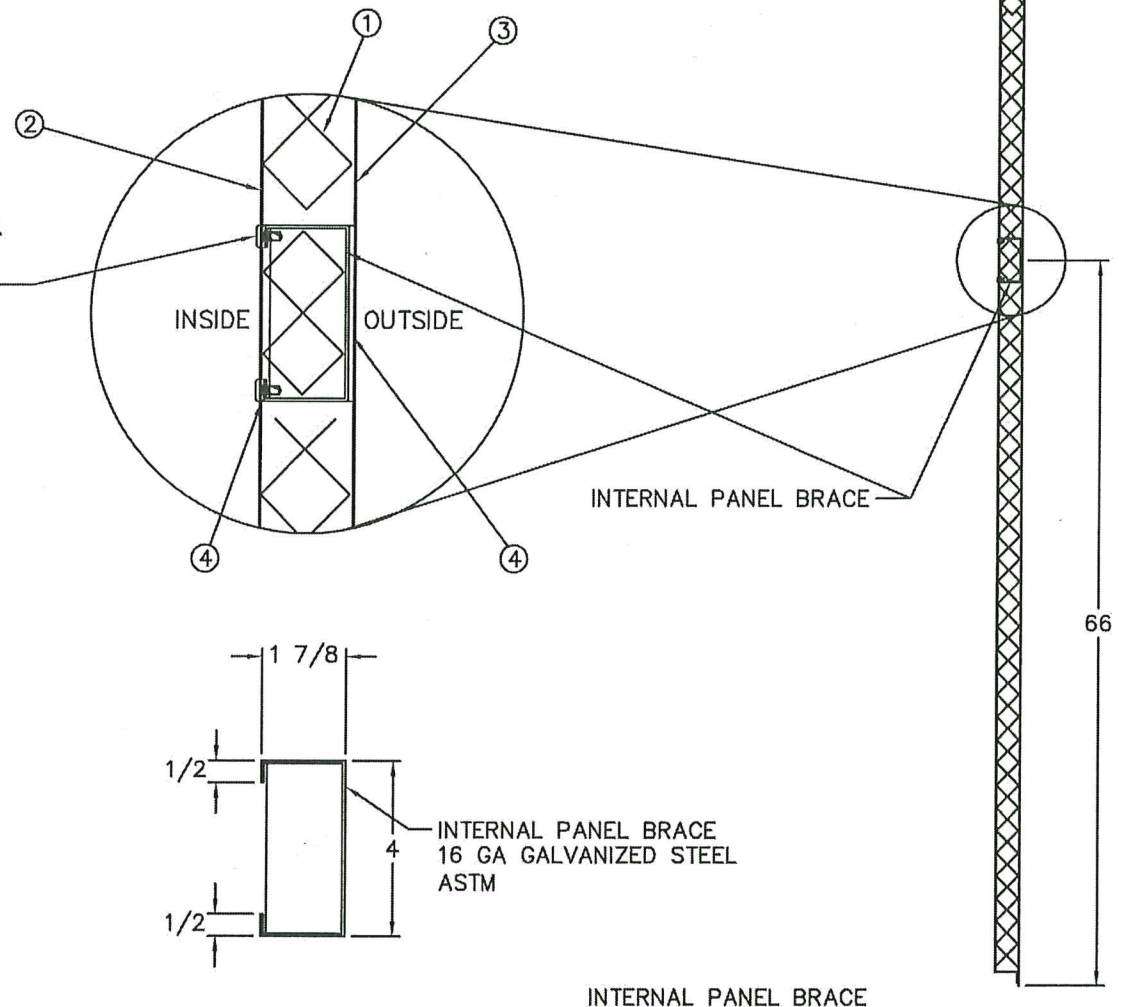


DIMENSIONAL DATA
MIAMI DADE TEST CABINET
MIAMI, FL
MDTC-004
CONSTRUCTION DETAILS

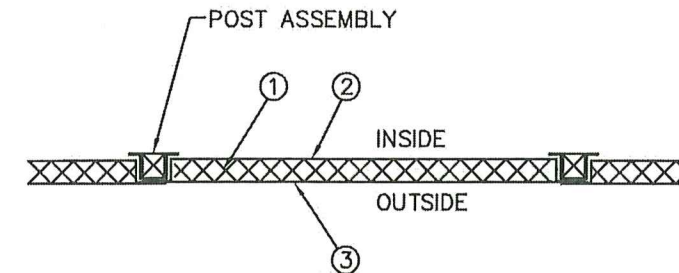
DRAWN BY	D.R.
DATE	04/21/2013
SCALE	N/A
REVISION #	4
DWG. NAME	TESTCABINET-NOA



#8-18x1/2 PAN HEAD SCREW.
3 1/2" SPACING VERTICALLY.
8" SPACING HORIZONTALLY.

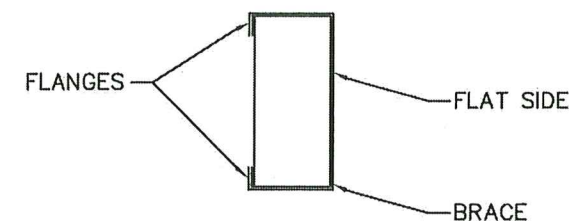


INTERNAL PANEL BRACE



PANEL AND POST ASSEMBLY
SEE SHEET 1
SECTION D-D

- ① 2.25 LB/FT³ DENSITY POLYURETHANE FOAM INSULATION
- ② .04 ALUMINUM OR 24 GA GALVANIZED PANEL LINER (INSIDE)
- ③ .04 ALUMINUM CASING PANEL (OUTSIDE)
- ④ DOUBLE SIDED STRUCTURAL TAPE APPLIED TO INSIDE OF .04 ALUMINUM CASING PANEL AND PANEL LINER. TAPE IS APPLIED TO CENTER OF THE BRACE ON FLAT SIDE. TAPE IS APPLIED TO BRACE FLANGES.



PRODUCT RENEWED
as complying with the Florida
Building Code
Acceptance No. 24-1021.02
Expiration Date 12/29/2024
By *[Signature]*
Miami Dade Product Control

PRODUCT REVISED
as complying with the Florida
Building Code
Acceptance No. 23-1207.06
Expiration Date 12/29/2024
By *[Signature]*
Miami Dade Product Control

SIDE SECTION VIEW
OF PANEL ASSEMBLY
SECTION C-C

LEGEND

Ⓜ HINGED ACCESS DOOR

REFER TO DRAWING 1 FOR SECTION CUTS

REV. #	BY	DATE	DESCRIPTION
0	D.R.	04/21/2013	ORIGINAL ISSUE
1	D.R.	04/26/2013	ADDED INSULATION TO DETAIL C.
2	D.R.	04/29/2013	CHANGED WORDING.
3	D.R.	05/08/2013	ADDED DETAIL FOR INTERNAL BRACE.
4	D.R.	08/27/2014	REVISED NOTE FOR SECTION CUTS.

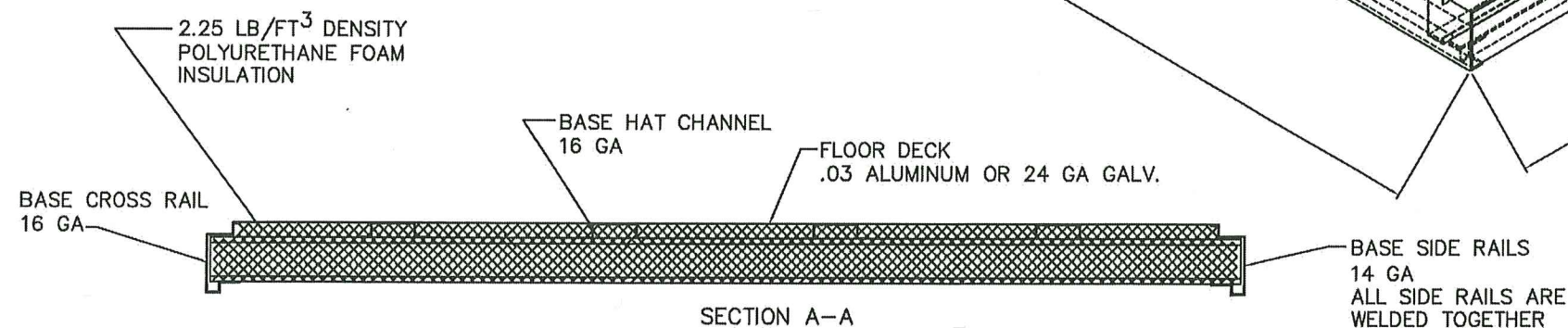
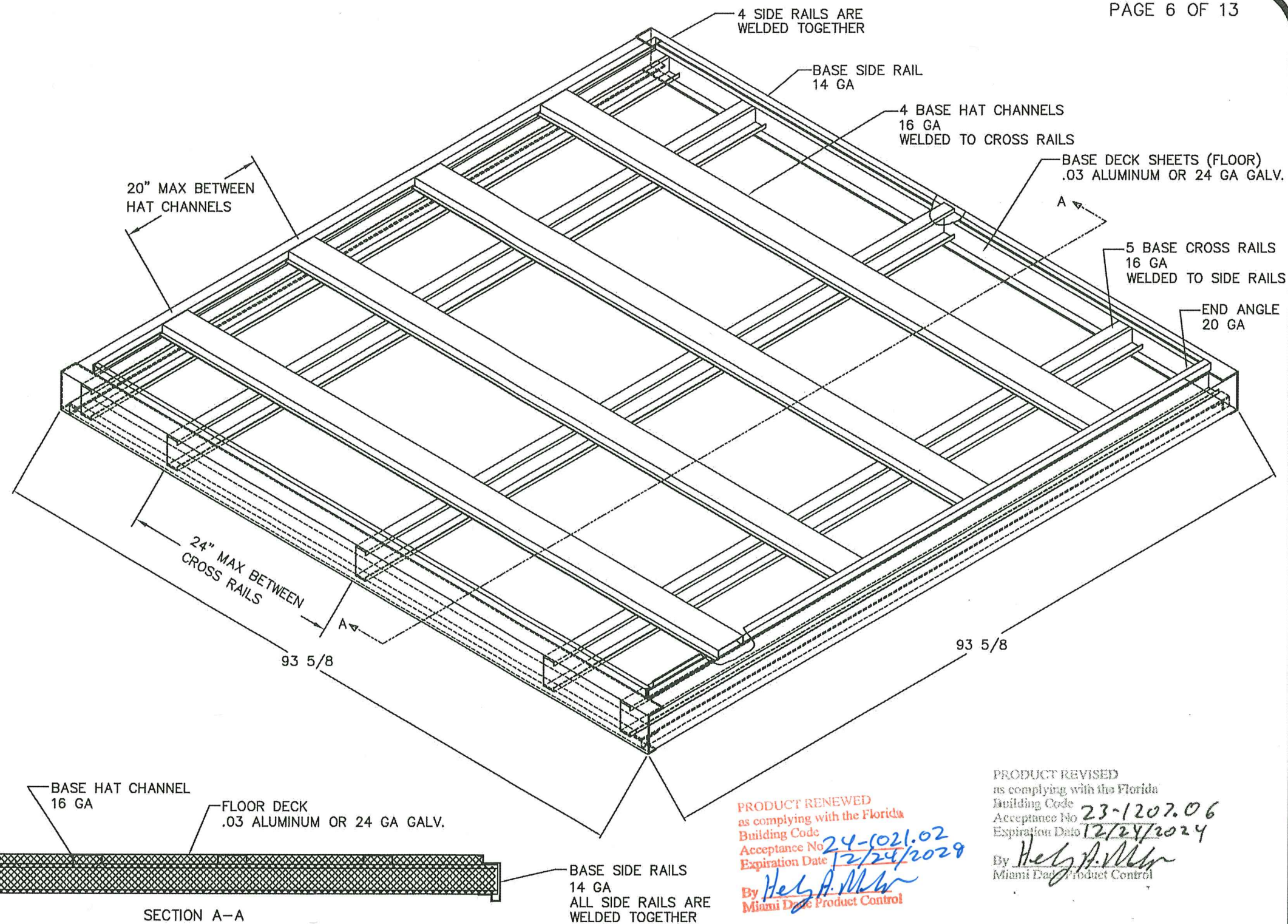
SCOTT WOLTERS
FL PE# 62354

WOLTERS ENGINEERING
(COA# 27194)
15211 97TH ROAD N
WEST PALM BEACH, FL 33412
PH/FAX: (561) 225-1982



DIMENSIONAL DATA
MIAMI DADE TEST CABINET
MIAMI, FL
MDTC-005
CONSTRUCTION DETAILS

DRAWN BY	D.R.
DATE	04/21/2013
SCALE	N/A
REVISION #	4
DWG. NAME	TESTCABINET-NOA



PRODUCT RENEWED
as complying with the Florida
Building Code
Acceptance No. 24-1021.02
Expiration Date 12/24/2029
By *Healy A. Miller*
Miami Dade Product Control

PRODUCT REVISED
as complying with the Florida
Building Code
Acceptance No. 23-1207.06
Expiration Date 12/24/2024
By *Healy A. Miller*
Miami Dade Product Control

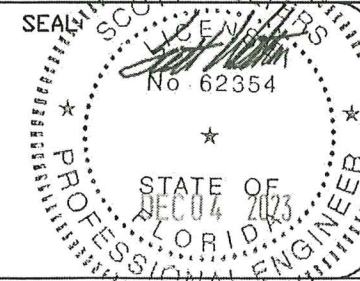
SEE PAGE 7 FOR BASE DECK SHEET ASSEMBLY

LEGEND

(H) HINGED ACCESS DOOR

REV. #	BY	DATE	DESCRIPTION
0	D.R.	04/21/2013	ORIGINAL ISSUE
1	D.R.	04/26/2013	ADDED BOTTOM PANNING AND FOAM INSULATION.
2	D.R.	05/09/2013	INCREASED UNIT WIDTH BY 69 5/8.

BASE FRAME ASSEMBLY

SCOTT WOLTERS
FL PE# 62354WOLTERS ENGINEERING
(COA# 27194)
15211 97TH ROAD N
WEST PALM BEACH, FL 33412
PH/FAX: (561) 225-1982

DIMENSIONAL DATA

MIAMI DADE TEST CABINET
MIAMI, FLMDTC-006
CONSTRUCTION DETAILS

DRAWN BY D.R.

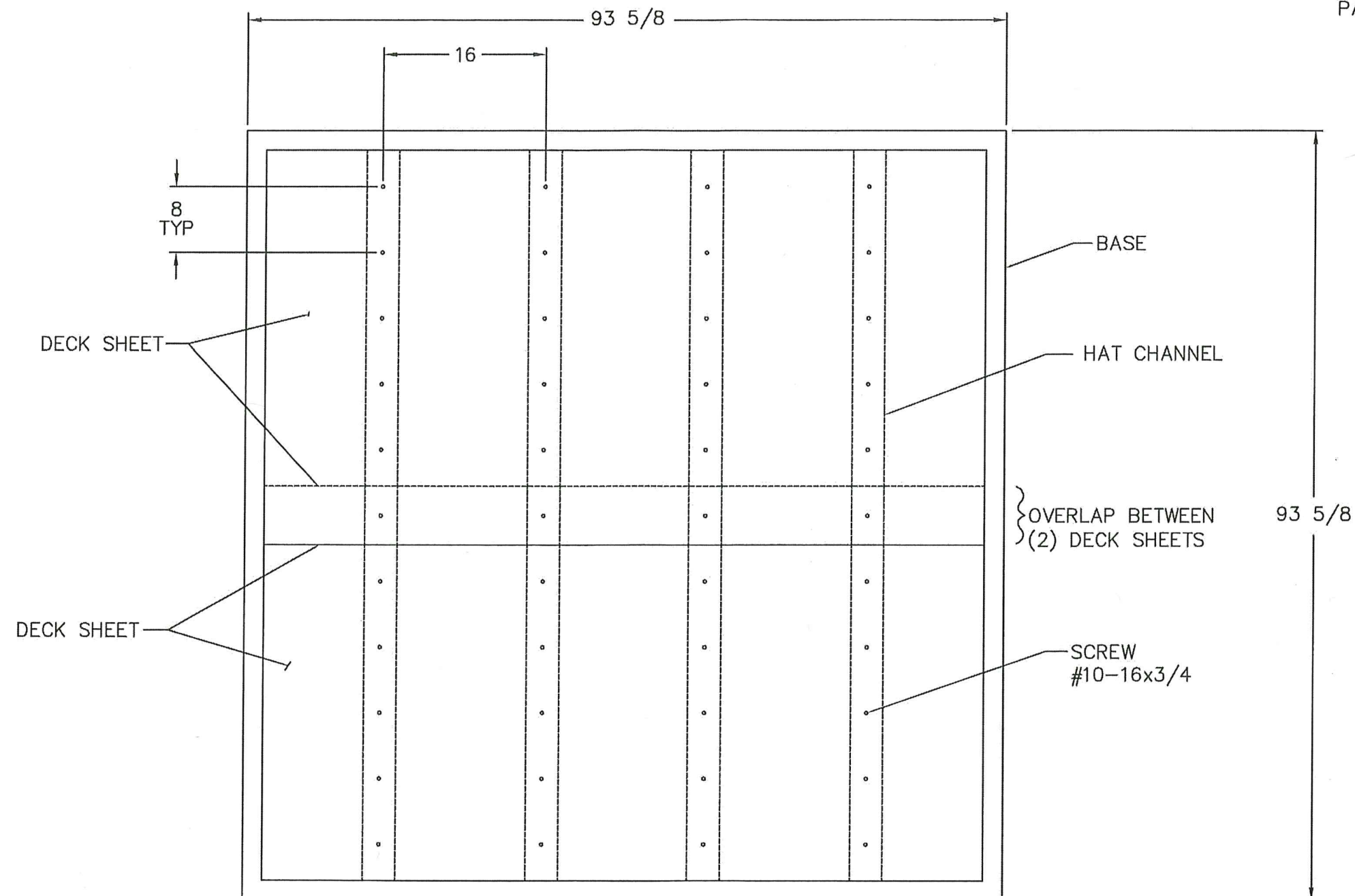
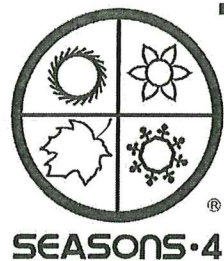
DATE 04/21/2013

SCALE N/A

REVISION # 2

DWG. NAME

TESTCABINET-NOA



PRODUCT RENEWED
as complying with the Florida
Building Code
Acceptance No. 24-1021.02
Expiration Date 12/24/2029
By Healy A. Malar
Miami Dade Product Control

PRODUCT REVISED -
as complying with the Florida
Building Code
Acceptance No. 23-1207.06
Expiration Date 12/24/2024
By Healy A. Malar
Miami Dade Product Control

LEGEND

(H) HINGED ACCESS DOOR

BASE DECK SHEET ASSEMBLY

J:\B500-B599\B505\Drafting\TESTCABINET-NOA

REV. #	BY	DATE	DESCRIPTION
0	D.R.	10/7/2014	ORIGINAL ISSUE

SCOTT WOLTERS
FL PE# 62354

WOLTERS ENGINEERING
(COA# 27194)
15211 97TH ROAD N
WEST PALM BEACH, FL 33412
PH/FAX: (561) 225-1982



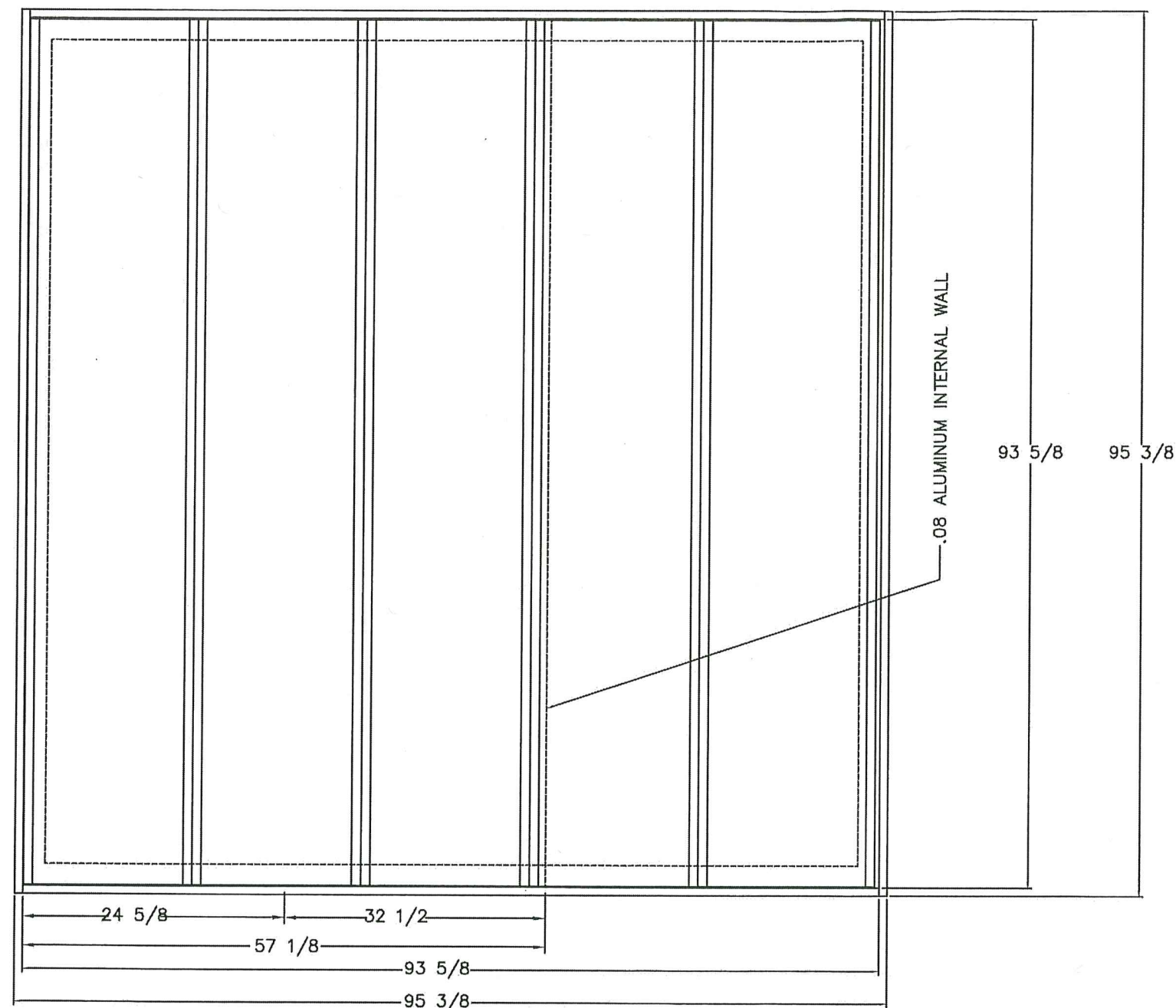
DIMENSIONAL DATA

MIAMI DADE TEST CABINET
MIAMI, FL

MDTC-007

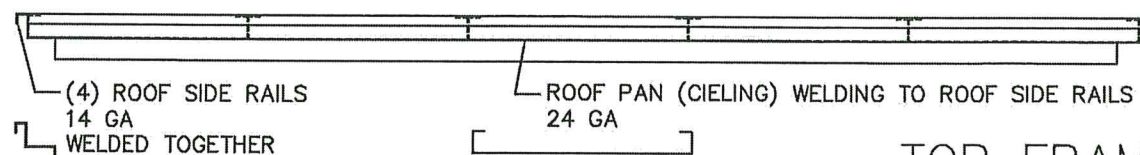
CONSTRUCTION DETAILS

DRAWN BY	D.R.
DATE	10/7/2014
SCALE	N/A
REVISION #	0
DWG. NAME	TESTCABINET-NOA



PRODUCT RENEWED
as complying with the Florida
Building Code
Acceptance No 24-1021.02
Expiration Date 12/24/2028
By *Helga A. Nelson*
Miami Dade Product Control

PRODUCT REVISED
as complying with the Florida
Building Code
Acceptance No 23-1207.06
Expiration Date 12/24/2024
By *Helga A. Nelson*
Miami Dade Product Control



TOP FRAME ASSEMBLY

LEGEND

Ⓜ HINGED ACCESS DOOR

REV. #	BY	DATE	DESCRIPTION
0	D.R.	04/21/2013	ORIGINAL ISSUE
1	D.R.	05/09/2013	MADE UNIT 69 5/8 WIDER.
2	D.R.	10/09/2013	REVISED POST SPACING AND BRACING.
3	D.R.	08/27/2014	REVISED SECTION VIEW NOTE.
4	D.R.	10/7/2014	ADDED SCREWS.

SCOTT WOLTERS
FL PE# 62354

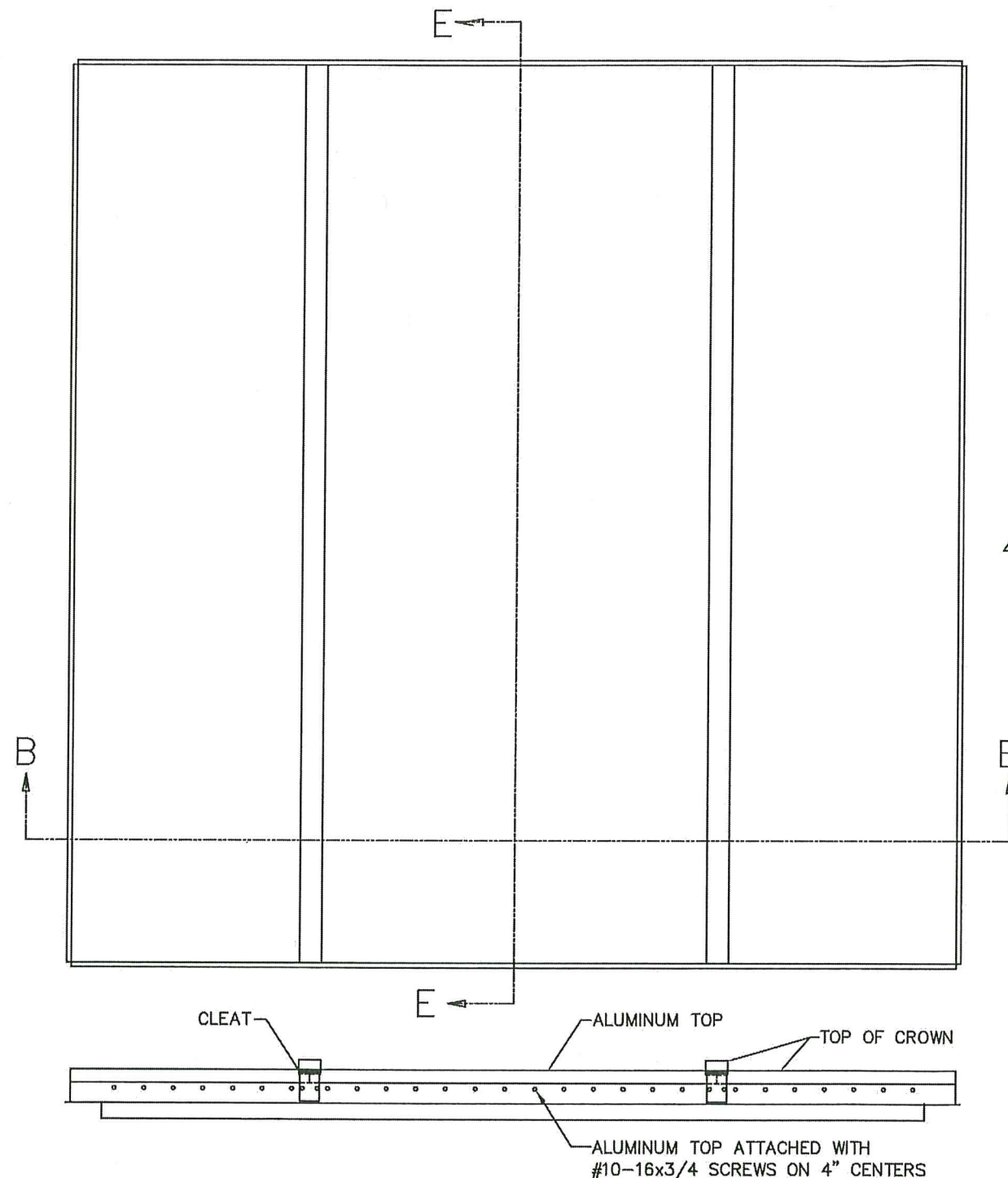
WOLTERS ENGINEERING
(COA# 27194)
15211 97TH ROAD N
WEST PALM BEACH, FL 33412
PH/FAX: (561) 225-1982



J: \B500-B599\B505\Drafting\TESTCABINET-NOA

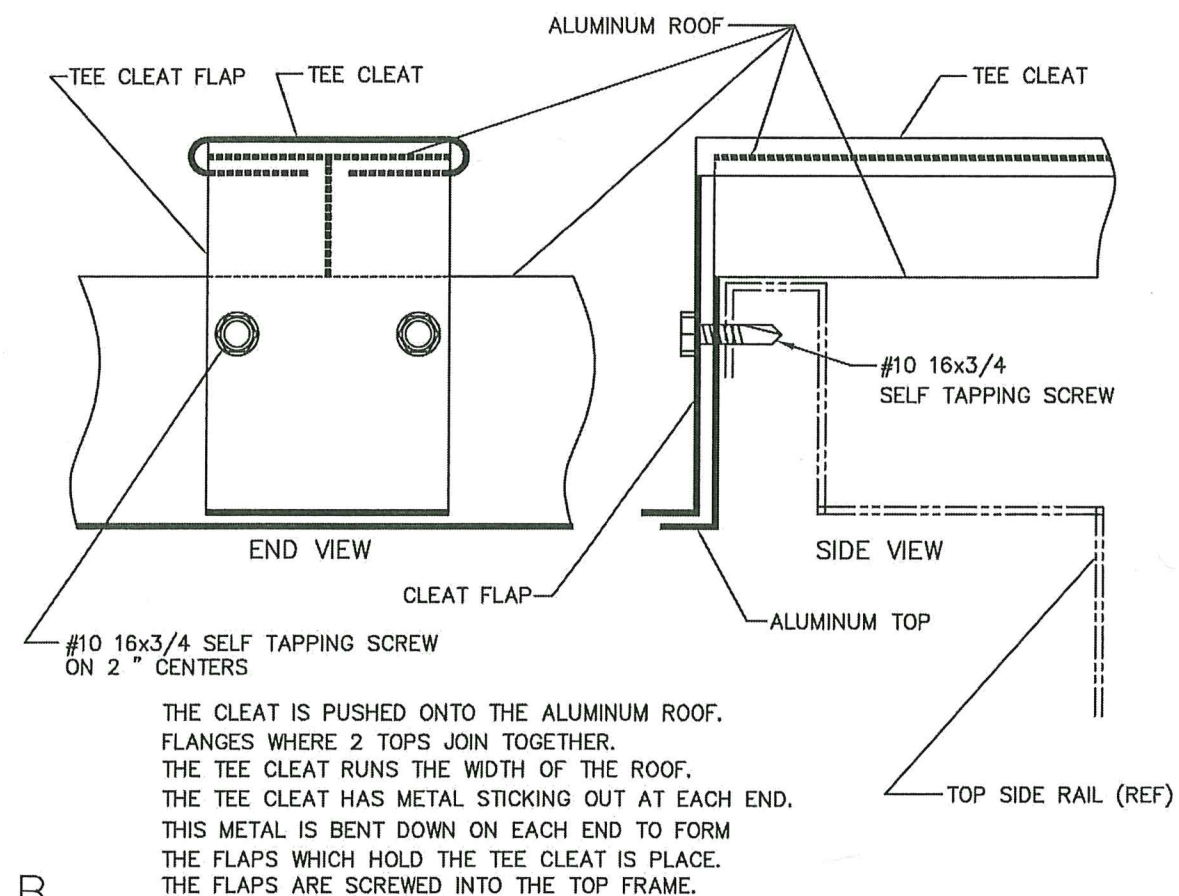
DIMENSIONAL DATA
MIAMI DADE TEST CABINET
MIAMI, FL
MDTC-008
CONSTRUCTION DETAILS

DRAWN BY	D.R.
DATE	04/21/2013
SCALE	N/A
REVISION #	4
DWG. NAME	TESTCABINET-NOA



TOP (COMPLETE ASSEMBLY)

REFER TO DRAWING 10 FOR SECTION VIEWS
REFER TO DRAWING 13 FOR ROOF AND PANEL DETAILS



ROOF ASSEMBLY DETAIL

PRODUCT RENEWED
as complying with the Florida
Building Code
Acceptance No. 24-1021.02
Expiration Date 12/24/2029
By *Heidi A. Miller*
Miami Dade Product Control

PRODUCT REVISED
as complying with the Florida
Building Code
Acceptance No. 23-1207.06
Expiration Date 12/24/2024
By *Heidi A. Miller*
Miami Dade Product Control

LEGEND

Ⓜ HINGED ACCESS DOOR

REV. #	BY	DATE	DESCRIPTION
0	D.R.	04/21/2013	ORIGINAL ISSUE
1	D.R.	05/09/2013	MADE UNIT 69 5/8 WIDER.
2	D.R.	10/09/2013	REVISED POST SPACING AND BRACING.
3	D.R.	08/27/2014	REVISED SECTION VIEW NOTE.
4	D.R.	10/7/2014	ADDED SCREWS.

SCOTT WOLTERS
FL PE# 62354

WOLTERS ENGINEERING
(CDA# 27194)
15211 97TH ROAD N
WEST PALM BEACH, FL 33412
PH/FAX: (561) 225-1982



DIMENSIONAL DATA

MIAMI DADE TEST CABINET
MIAMI, FL

MDTC-009
CONSTRUCTION DETAILS

DRAWN BY D.R.

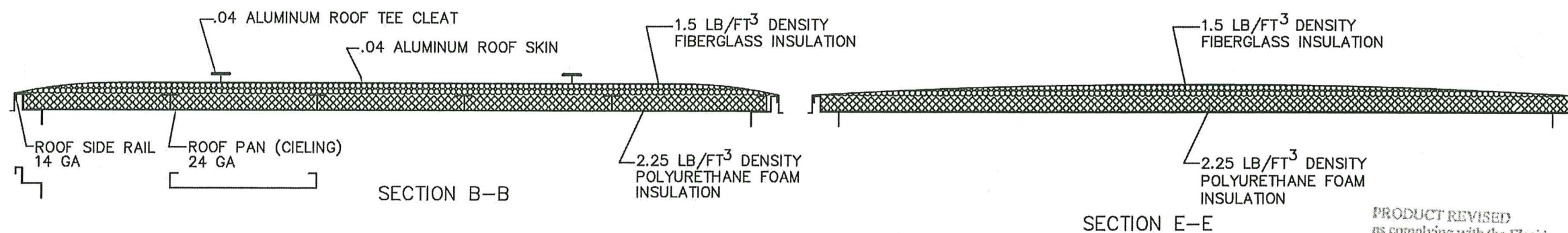
DATE 04/21/2013

SCALE N/A

REVISION # 4

DWG. NAME
TESTCABINET-NOA

J:\B500-B599\B505\Drafting\TESTCABINET-NOA



PRODUCT RENEWED
as complying with the Florida
Building Code
Acceptance No. 24-1021.02
Expiration Date 12/24/2029
By *Heidi A. Miller*
Miami Dade Product Control

PRODUCT REVISED
as complying with the Florida
Building Code
Acceptance No. 23-1207.06
Expiration Date 12/24/2024
By *Heidi A. Miller*
Miami Dade Product Control

TOP (COMPLETE ASSEMBLY) SECTIONS
REFER TO DRAWING 9 FOR SECTION CUTS

J:\B500-B599\B505\Drafting\TESTCABINET-NOA

LEGEND

Ⓜ HINGED ACCESS DOOR

REV. #	BY	DATE	DESCRIPTION
0	D.R.	04/21/2013	ORIGINAL ISSUE
1	D.R.	05/09/2013	MADE UNIT 69 5/8 WIDER.
2	D.R.	10/09/2013	REVISED POST SPACING AND BRACING.
3	D.R.	08/27/2014	REVISED SECTION VIEW NOTE.
4	D.R.	10/7/2014	ADDED SCREWS.

SCOTT WOLTERS
FL PE# 62354

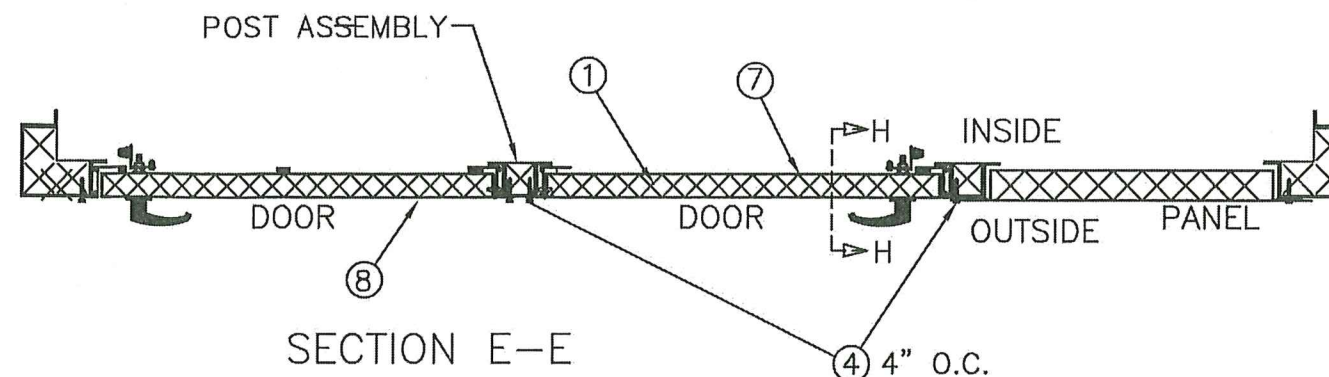
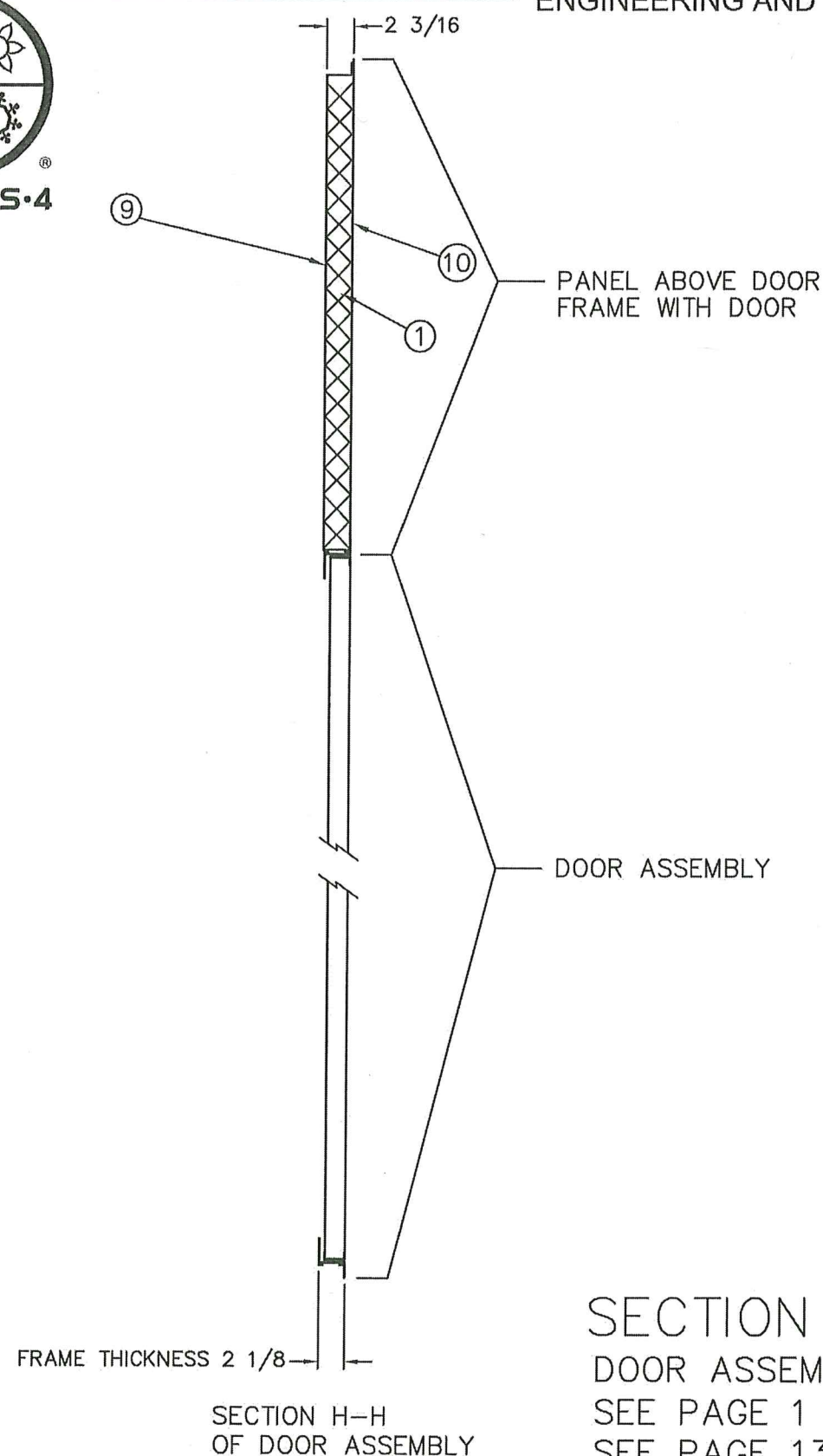
WOLTERS ENGINEERING
(COA# 27194)
15211 97TH ROAD N
WEST PALM BEACH, FL 33412
PH/FAX: (561) 225-1982

SEAL



DIMENSIONAL DATA
MIAMI DADE TEST CABINET
MIAMI, FL
MDTC-010
CONSTRUCTION DETAILS

DRAWN BY	D.R.
DATE	04/21/2013
SCALE	N/A
REVISION #	4
DWG. NAME	TESTCABINET-NOA

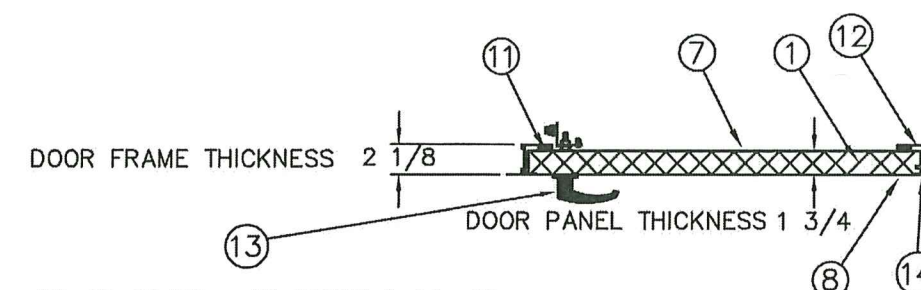


PRODUCT RENEWED
as complying with the Florida
Building Code
Acceptance No. 24-1021.02
Expiration Date 12/24/2029
By H. A. Miller
Miami Dade Product Control

PRODUCT REVISED
as complying with the Florida
Building Code
Acceptance No. 23-1207.06
Expiration Date 12/24/2024
By H. A. Miller
Miami Dade Product Control

DOOR HARDWARE:
1. ROLLER CAM
2. LATCHING MECHANISM
3. DOOR HANDLE
4. INTERLINK ARM

- ① 2.25 LB/FT³ DENSITY POLYURETHANE FOAM INSULATION
- ④ SELF TAPPING SCREW #10-16x3/4 STAINLESS STEEL
- ⑦ .04 ALUMINUM DOOR LINER
- ⑧ .04 ALUMINUM CASING DOOR
- ⑨ .04 ALUMINUM DOOR PANEL LINER
- ⑩ .04 ALUMINUM DOOR PANEL
- ⑪ DOOR GASKET AT PERIMETER OF ALL DOOR PANELS
- ⑫ EXTRUDED AND WELDED DOOR FRAME
- ⑬ DOOR HANDLE ASSEMBLY
- ⑭ ALUMINUM POP RIVETS @ 24" CENTERS ATTACHING HINGE TO DOOR PANEL AND DOOR FRAME



SECTION E-E SHOWING DOOR DETAILS

DOOR ASSEMBLY

SEE PAGE 1 FOR SECTION E-E CUT

SEE PAGE 13 FOR DOOR ASSEMBLY DETAILS

J: \B500-B599\B505\Drafting\TESTCABINET-NOA

REV. #	BY	DATE	DESCRIPTION
0	DR	10/7/2014	ORIGINAL ISSUE

SCOTT WOLTERS
FL PE# 62354

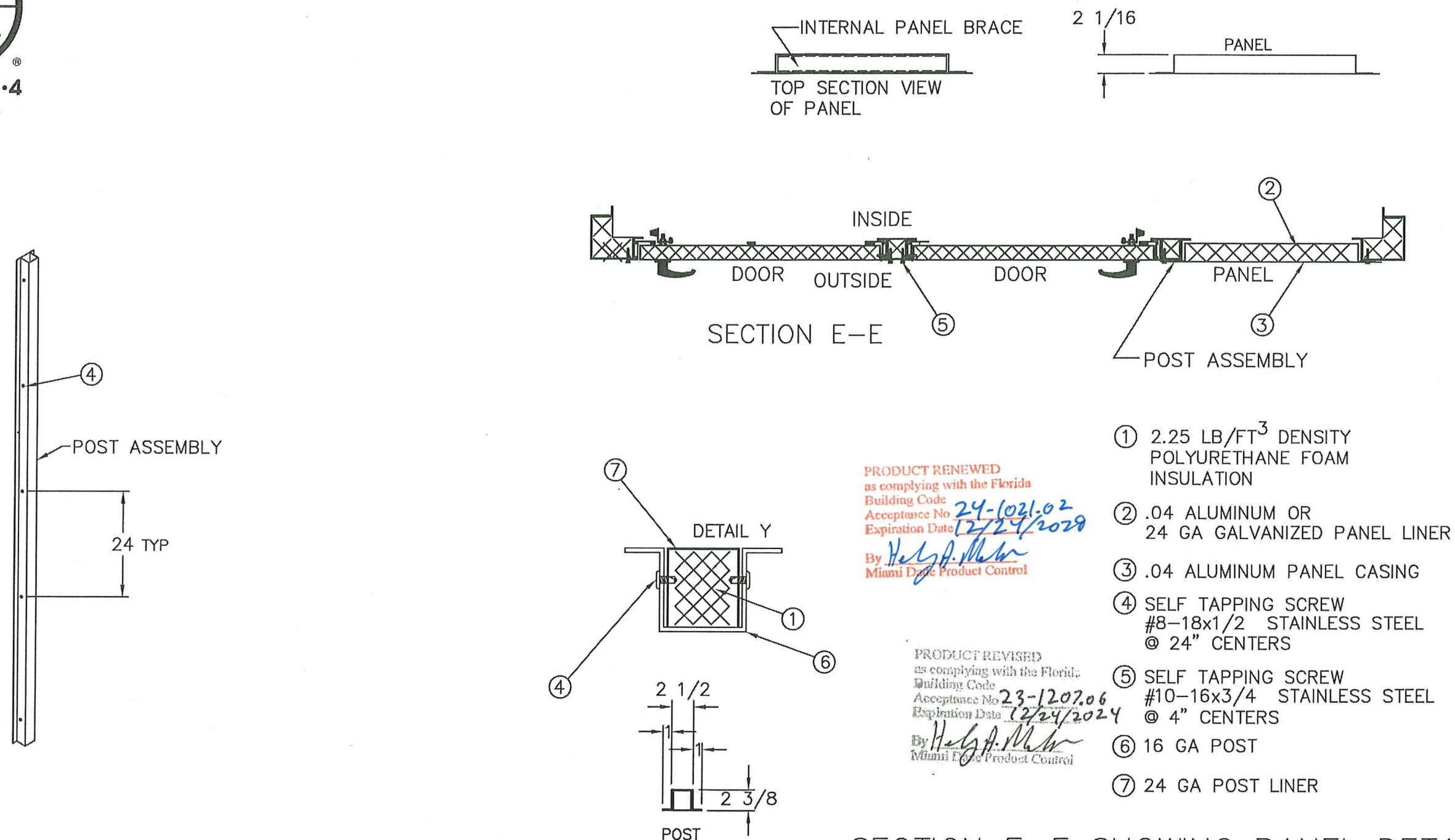
WOLTERS ENGINEERING
(COA# 27194)
15211 97TH ROAD N
WEST PALM BEACH, FL 33412
PH/FAX: (561) 225-1982



DIMENSIONAL DATA

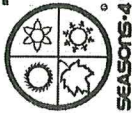
MIAMI DADE TEST CABINET
MIAMI, FL
MDTC-011
CONSTRUCTION DETAILS

DRAWN BY	DR
DATE	10/7/2014
SCALE	N/A
REVISION #	0
DWG. NAME	TESTCABINET-NOA

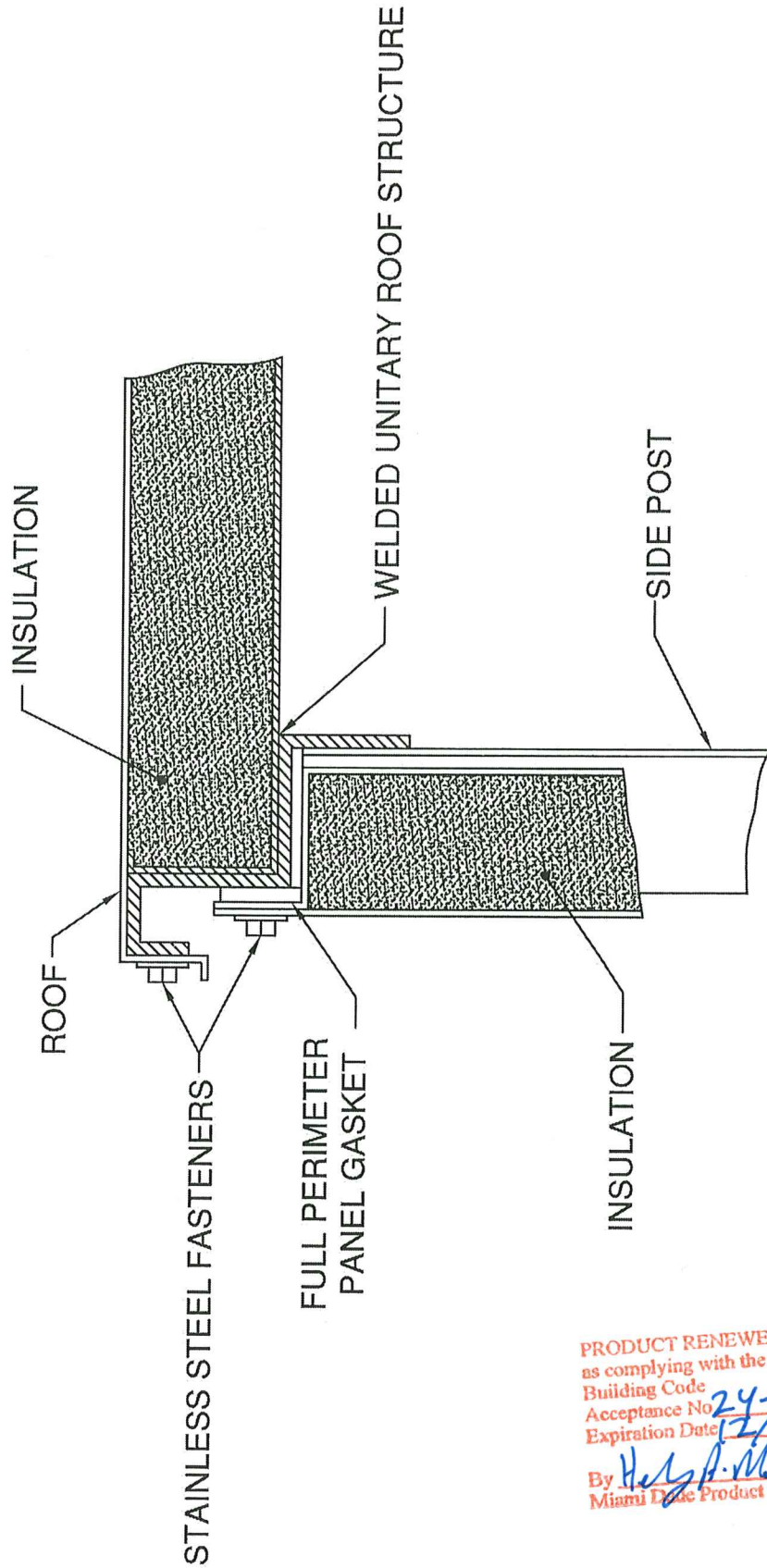
SECTION E-E SHOWING PANEL DETAILS
AND POST DETAILSPANEL AND POST ASSEMBLY
SEE DRAWING 1 FOR SECTION E-E CUT

J: \B500-B599\B505\Drafting\TESTCABINET-NOA

REV. #	BY	DATE	DESCRIPTION	<div>SCOTT WOLTERS FL PE# 62354</div> <div>WOLTERS ENGINEERING (CDA# 27194) 15211 97TH ROAD N WEST PALM BEACH, FL 33412 PH/FAX: (561) 225-1982</div> <div>SEAL SCOTT WOLTERS No 62354 STATE OF FLORIDA PROFESSIONAL ENGINEER DEC 04 2023</div>	DIMENSIONAL DATA	DRAWN BY	DR
0	DR	10/7/2014	ORIGINAL ISSUE		MIAMI DADE TEST CABINET	DATE	10/7/2014
					MIAMI, FL	SCALE	N/A
					MDTC-012	REVISION #	0
					CONSTRUCTION DETAILS	DWG. NAME	TESTCABINET-NOA



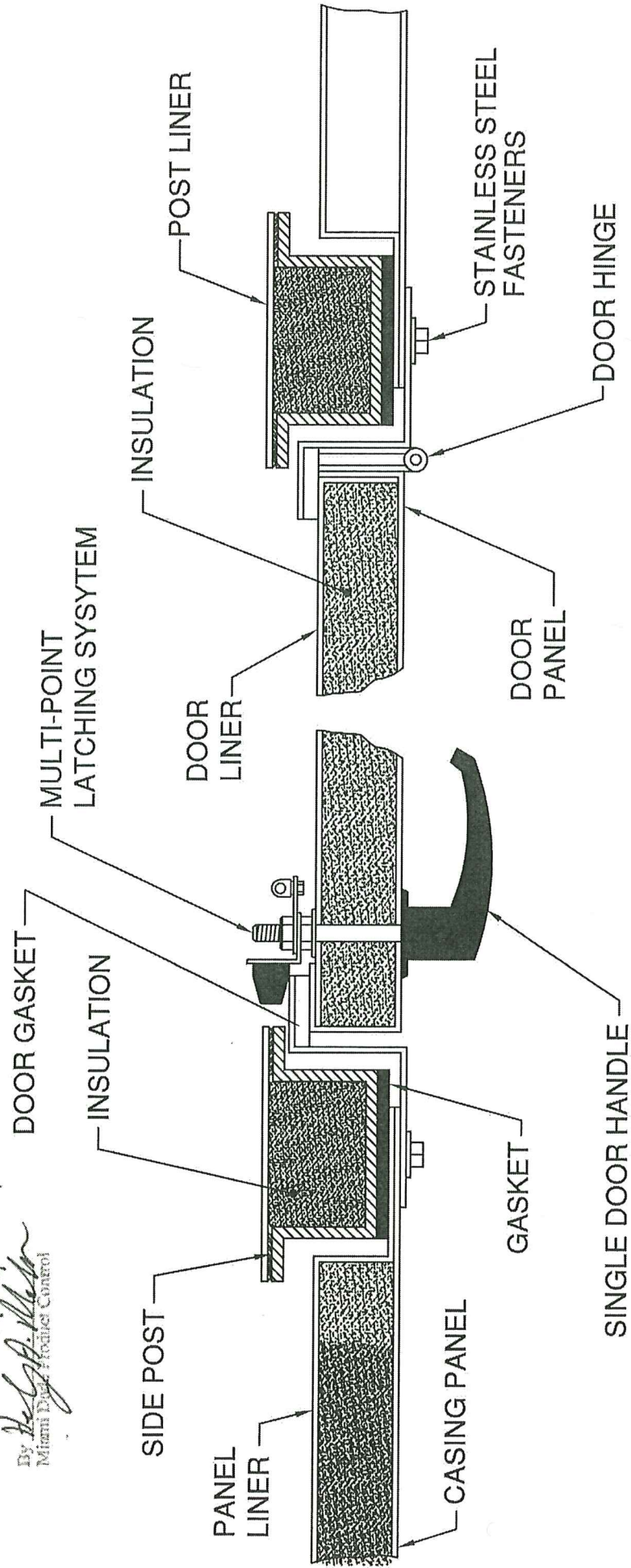
ROOF AND PANEL DETAILS



PRODUCT RENEWED
as complying with the Florida
Building Code
Acceptance No. 24-1021.02
Expiration Date 7/24/2028
By H. G. P. Miller
Miami Dade Product Control

DOOR AND PANEL DETAILS

PRODUCT REVISED
as complying with the Florida
Building Code
Acceptance No. 23-1207.06
Expiration Date 12/24/2024
By H. G. P. Miller
Miami Dade Product Control



REV. #	BY	DATE	DESCRIPTION
0	DR	10/22/2014	ORIGINAL ISSUE

SCOTT WOLTERS FL PE# 62354	MIAMI DADE TEST CABINET	DRAWN BY	DR
VOLTERS ENGINEERING (CDA# 27194) 15211 97TH ROAD N WEST PALM BEACH, FL 33412 PH/FAX: (561) 225-1982	MIAMI, FL	DATE	10/7/2014
	MDTC-13	SCALE	N/A
	CONSTRUCTION DETAILS	REVISION #	0
		DWG. NAME	TESTCABINET-NOA

J:\B500-B599\B505\Drafting\TESTCABINET-NOA