



DEPARTMENT OF REGULATORY AND ECONOMIC RESOURCES (RER)
BOARD AND CODE ADMINISTRATION DIVISION
NOTICE OF ACCEPTANCE (NOA)

MIAMI-DADE COUNTY
PRODUCT CONTROL SECTION
11805 SW 26 Street, Room 208
Miami, Florida 33175-2474
T (786) 315-2590 F (786) 315-2599
www.miamidade.gov/economy

Rolling Door Industries LLC
8214 NW 64 Street
Miami, FL 33166

SCOPE:

This NOA is being issued under the applicable rules and regulations governing the use of construction materials. The documentation submitted has been reviewed and accepted by Miami-Dade County RER-Product Control Section to be used in Miami-Dade County and other areas where allowed by the Authority Having Jurisdiction (AHJ).

This NOA shall not be valid after the expiration date stated below. The Miami-Dade County Product Control Section (In Miami-Dade County) and/or the AHJ (in areas other than Miami-Dade County) reserve the right to have this product or material tested for quality assurance purposes. If this product or material fails to perform in the accepted manner, the manufacturer will incur the expense of such testing and the AHJ may immediately revoke, modify, or suspend the use of such product or material within their jurisdiction. RER reserves the right to revoke this acceptance if it is determined by Miami-Dade County Product Control Section that this product or material fails to meet the requirements of the applicable building code.

This product is approved as described herein and has been designed to comply with the Florida Building Code, including the High Velocity Hurricane Zone.

DESCRIPTION: 20 Gage Slat Steel Roll-up Door up to 26'-0" Wide

APPROVAL DOCUMENT: Drawing No. **23-067**, titled "26'-0" Maximum Wide, 20 Gage Slat Roll-up Door", sheets 1 through 3 of 3 (including sheet 1A), dated 07/07/2023, prepared by Tilteco, Inc., signed and sealed by Walter A. Tillit, Jr., P.E., bearing the Miami-Dade County Product Control revision stamp with the Notice of Acceptance number and expiration date by the Miami-Dade County Product Control Section.

MISSILE IMPACT RATING: Large and Small Missile Impact Resistant

LABELING: A permanent label with the manufacturer's name or logo, manufacturing address, model/series number, the positive and negative design pressure rating, indicate impact rated if applicable, installation instruction drawing reference number, approval number (NOA), the applicable test standards, and the statement reading 'Miami-Dade County Product Control Approved' is to be located on the door's side track, bottom angle, or inner surface of a panel.

RENEWAL of this NOA shall be considered after a renewal application has been filed and there has been no change in the applicable building code negatively affecting the performance of this product.

TERMINATION of this NOA will occur after the expiration date or if there has been a revision or change in the materials, use, and/or manufacture of the product or process. Misuse of this NOA as an endorsement of any product, for sales, advertising or any other purposes shall automatically terminate this NOA. Failure to comply with any section of this NOA shall be cause for termination and removal of NOA.

ADVERTISEMENT: The NOA number preceded by the words Miami-Dade County, Florida, and followed by the expiration date may be displayed in advertising literature. If any portion of the NOA is displayed, then it shall be done in its entirety.

INSPECTION: A copy of this entire NOA shall be provided to the user by the manufacturer or its distributors and shall be available for inspection at the job site at the request of the Building Official.

This NOA **renews NOA # 23-0726.08** and consists of this page 1 and evidence pages E-1, E-2 and E-3, as well as approval document mentioned above.

The submitted documentation was reviewed by **Sifang Zhao, P.E.**



S.Z.
01/30/2025

NOA No. 24-1211.03
Expiration Date: December 28, 2025
Approval Date: January 30, 2025
Page 1

NOTICE OF ACCEPTANCE: EVIDENCE SUBMITTED

1. EVIDENCE SUBMITTED UNDER PREVIOUS NOA No. 13-0226.07

A. DRAWINGS

1. Drawing No. **13-020**, titled “26’-0” Maximum Wide, 20 Gage Slat Roll-up Door”, sheets 1 through 3 of 3 (including sheet 1A), dated 02/26/2013, prepared by Tilteco, Inc., signed and sealed by Walter A. Tillit, Jr., P.E.

B. TESTS

1. Test reports on: 1) Uniform Static Air Pressure Test, Loading per FBC, TAS 202-94
2) Large Missile Impact Test per FBC, TAS 201-94
3) Cyclic Wind Pressure Loading per FBC, TAS 203-94
4) Forced Entry Test, per FBC 2411 3.2.1, TAS 202-94
5) Tensile Test per ASTM A370-05,
along with installation diagram of Series HV 2620 Roll-up 20 Gauge Slat Doors, prepared by Fenestration Testing Laboratory, Inc, Test Report No. **FTL-6444**, dated 02/23/2011, signed and sealed by Marlin D. Brinson, P.E.

C. CALCULATIONS

1. Anchor verification calculations and structural analysis, complying with FBC-2010, prepared by Tilteco, Inc, dated 02/26/2013, signed and sealed by Walter A. Tillit, Jr., P.E.

D. QUALITY ASSURANCE

1. Miami-Dade Department of Regulatory and Economic Resources (RER)

E. MATERIAL CERTIFICATIONS

1. None.

F. STATEMENTS

1. Statement letter of code conformance to 2010 FBC issued by Tilteco, Inc, dated 02/26/2013, signed and sealed by Walter A. Tillit, Jr., P.E.
2. Statement letter of no financial interest, issued by Tilteco, Inc, dated 02/26/2013, signed and sealed by Walter A. Tillit, Jr., P.E.



Sifang Zhao, P.E.
Product Control Examiner
NOA No. 24-1211.03
Expiration Date: December 28, 2025
Approval Date: January 30, 2025

NOTICE OF ACCEPTANCE: EVIDENCE SUBMITTED

2. EVIDENCE SUBMITTED UNDER NOA # 17-1108.34

A. DRAWINGS

1. Drawing No. **17-248**, titled “26’-0” Maximum Wide, 20 Gage Slat Roll-up Door”, sheets 1 through 3 of 3 (including sheet 1A), dated 08/24/2017, prepared by Tilteco, Inc., signed and sealed by Walter A. Tillit, Jr., P.E.

B. TESTS

1. None.

C. CALCULATIONS

1. None.

D. QUALITY ASSURANCE

1. Miami-Dade Department of Regulatory and Economic Resources (RER)

E. MATERIAL CERTIFICATIONS

1. None.

F. STATEMENTS

1. Statement letter of code conformance to the 6th Edition (2017) FBC, issued by Tilteco, Inc, dated 08/24/2017, signed and sealed by Walter A. Tillit, Jr., P.E.



Sifang Zhao, P.E.
Product Control Examiner
NOA No. 24-1211.03
Expiration Date: December 28, 2025
Approval Date: January 30, 2025

NOTICE OF ACCEPTANCE: EVIDENCE SUBMITTED

3. EVIDENCE SUBMITTED UNDER NOA # 20-0814.12 AND NEW

A. DRAWINGS

1. Drawing No. **23-067**, titled “26’-0” Maximum Wide, 20 Gage Slat Roll-up Door”, sheets 1 through 3 of 3 (including sheet 1A), dated 07/07/2023, prepared by Tilteco, Inc., signed and sealed by Walter A. Tillit, Jr., P.E.

B. TESTS

1. None.

C. CALCULATIONS

1. None.

D. QUALITY ASSURANCE

1. Miami-Dade Department of Regulatory and Economic Resources (RER).

E. MATERIAL CERTIFICATIONS

1. None.

F. STATEMENTS

1. Statement letter of code conformance to the 8th Edition (2023) of the FBC, issued by Tilteco, Inc, dated 07/07/2023, signed and sealed by Walter A. Tillit, Jr., P.E.
2. Testing contract quotation, issued by QAI Laboratories, dated 10/11/2023, signed by the Austin Mintz.
3. Statement letter of code conformance to the 7th Edition (2020) of the FBC, issued by Tilteco, Inc, dated 07/20/2020, signed and sealed by Walter A. Tillit, Jr., P.E.



Sifang Zhao, P.E.
Product Control Examiner
NOA No. 24-1211.03
Expiration Date: December 28, 2025
Approval Date: January 30, 2025

GENERAL NOTES:

1- ROLL-UP DOOR SHOWN ON THIS PRODUCT APPROVAL DOCUMENT (P.A.D.) HAS BEEN VERIFIED FOR CODE COMPLIANCE IN ACCORDANCE WITH THE 2023 (8th EDITION) AND 2020 (7th EDITION) OF THE FLORIDA BUILDING CODE.

DESIGN WIND LOADS SHALL BE DETERMINED AS PER SECTION 1620 THE ABOVE MENTIONED CODE, USING ASCE 7-22 (FBC 2023) & ASCE 7-16 (FBC 2020) AND SHALL NOT EXCEED THE MAXIMUM (A.S.D.) DESIGN PRESSURE RATINGS INDICATED IN NOTE 1.

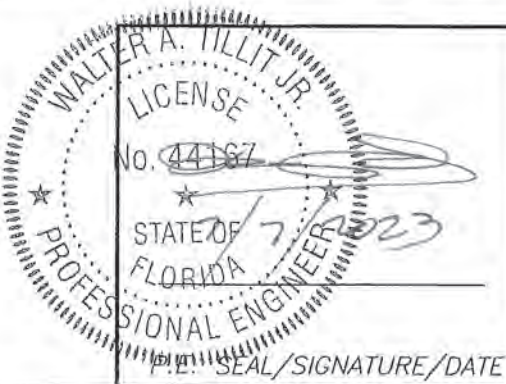
IN ORDER TO VERIFY THE ABOVE CONDITION, ULTIMATE DESIGN WIND LOADS DETERMINED PER ASCE 7-22 OR ASCE 7-16 SHALL BE FIRST REDUCED TO (A.S.D.) DESIGN WIND LOADS BY MULTIPLYING THEM BY 0.6 IN ORDER TO COMPARE THESE W/ MAX. (A.S.D.) DESIGN PRESSURE RATINGS INDICATED ON NOTE 1.


ROLL-UP DOOR'S ADEQUACY FOR IMPACT AND FATIGUE RESISTANCE HAS BEEN VERIFIED IN ACCORDANCE WITH SECTION 1626 OF THE ABOVE MENTIONED CODE AS PER FENESTRATION TESTING LABORATORY, INC. REPORT # 6444, PER TAS-201, TAS-202 & TAS-203 PROTOCOLS.

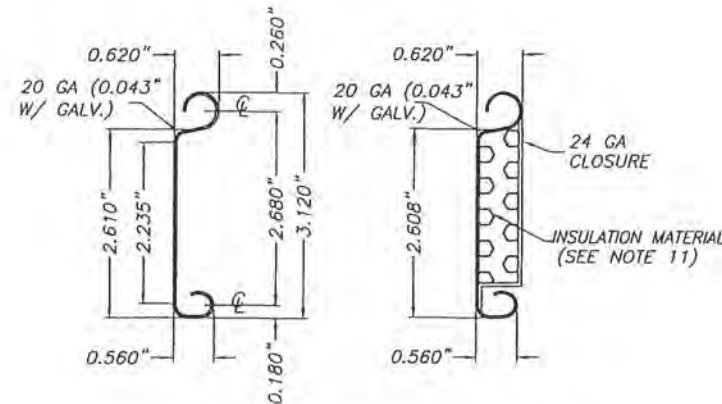
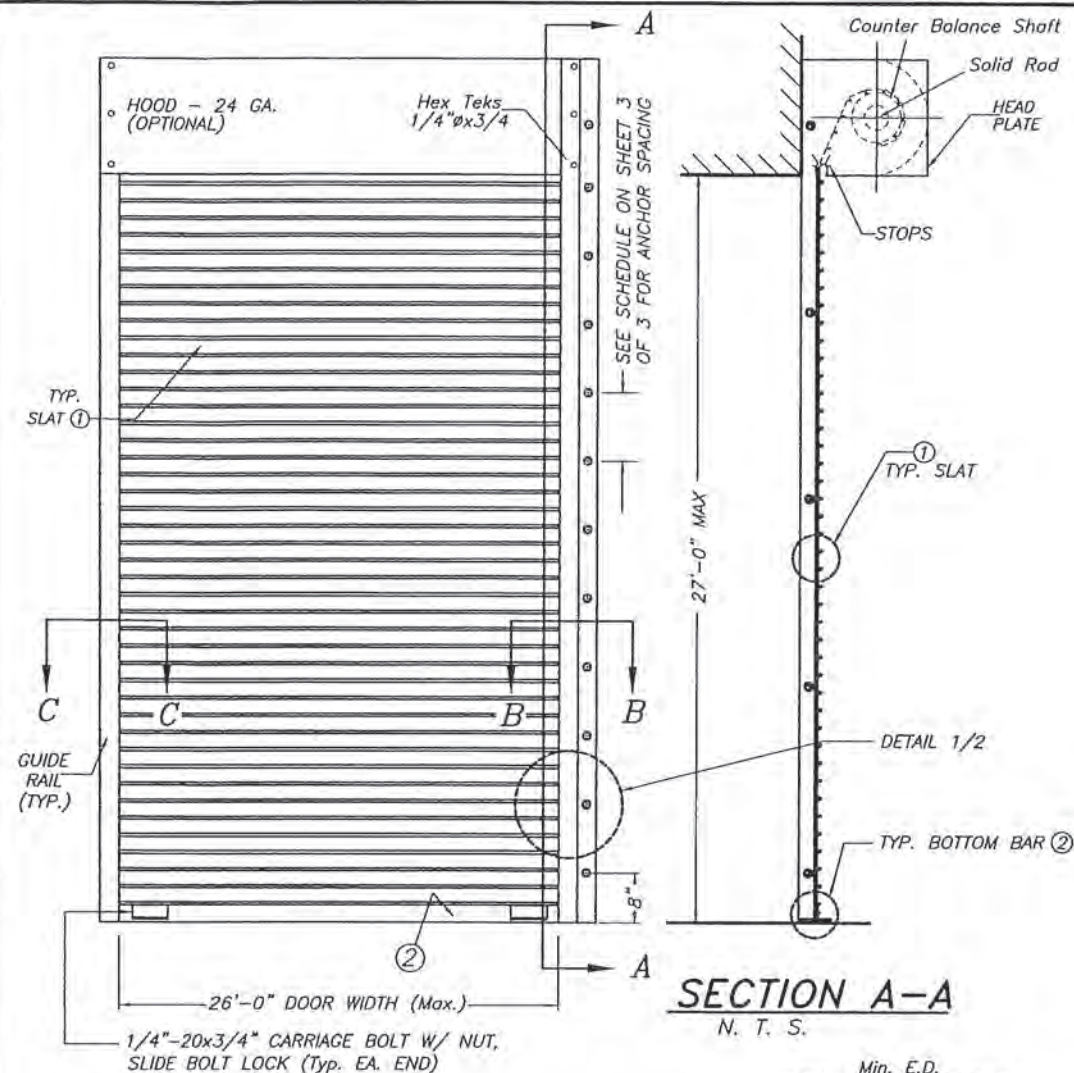
MAX. A.S.D. DESIGN PRESSURE RATING: +70.0, -70.0 PSF

- 2- SLAT TO BE A.S.T.M. A-653 GR 40 STRUCTURAL QUALITY STEEL WITH MIN $F_y = 46.9$ ksi. AND G-90 GALVANIZING PER A.S.T.M. A-653, OR A.I.S.I. 304 SERIES STAINLESS STEEL MANUFACTURED WITH A MINIMUM YIELD STRENGTH OF $F_y = 46.9$ ksi.
- 3- ALL STEEL ANGLES TO BE A.S.T.M. A-36 DESIGNATION, SHOP PRIMED AGAINST CORROSION PRIOR TO INSTALLATION. PAINT TO CONFORM TO FEDERAL SPECIFICATIONS CORRESPONDING TO RED OXIDE PAINT OR EQUAL.
- 4- WINDLOCKS TO BE "MALLEABLE IRON" $F_y = 42$ ksi OR A.I.S.I. DESIGNATION STEEL W/ $F_y = 40$ ksi., CHROME OR NICKEL PLATED.
- 5- ALL ASSEMBLY BOLTS TO BE S.A.E. GRADE 2 CADMIUM PLATED OR GALVANIZED STEEL.
- 6- STEEL WINDBARS TO BE A.S.T.M. A-36 DESIGNATION, SHOP PRIMED PRIOR TO INSTALLATION. PAINT TO CONFORM TO FEDERAL SPECIFICATIONS CORRESPONDING TO RED OXIDE PAINT OR EQUAL.
- 7- HOOD TO BE 24 GA. A.S.T.M. A-653 DESIGNATION G-90 FINISH TYPE COATING.
- 8- ALL RIVETS TO BE A.I.S.I. C1006 SPHERODIZED ANNEALED ALUMINUM LOW CARBON COLD HEADING QUALITY STEEL, ZINC PLATED, W/ 55.0 ksi. MINIMUM TENSILE STRENGTH, AS MANUFACTURED BY UNIVERSAL RIVET, INC.
- 9- CONCRETE ANCHORS TO BE AS MANUFACTURED BY HILTI, INC AND DEWALT, INC. AND SHALL BE INSTALLED FOLLOWING ALL OF THE RECOMMENDATIONS AND SPECIFICATIONS OF THE ANCHOR'S MANUFACTURER.
- 10- ALL WELDING TO CONFORM TO AMERICAN WELDING SOCIETY'S AWS D1.1 REGULATIONS.
USE A.W.S A5.1 OR A5.5 E60XX ELECTRODES MIN. 3/16" FILLET SIZE.
- 11- INSULATION MATERIAL SHALL BE EPS-EXPANDED POLYSTYRENE INSULATION, MANUFACTURED BY DYPLAST PRODUCTS LLC. W/ MIAMI DADE COUNTY APPROVAL.
- 12- IT SHALL BE THE RESPONSIBILITY OF THE CONTRACTOR TO VERIFY THAT THE EXISTING STRUCTURE IS DESIGNED TO SUPPORT V_x AND V_y FORCES AT BOTH JAMBS.
SEE SCHEDULE ON SHEET 3 OF 3, FOR V_x & V_y VALUES.
- 13- ROLL-UP MECHANISM NOT PART OF THIS APPROVAL.
- 14- (A) THIS P.A.D. PREPARED BY THIS ENGINEER IS GENERIC AND DOES NOT PROVIDE INFORMATION FOR A SITE SPECIFIC PROJECT; I.E. WHERE THE SITE CONDITIONS DEVIATE FROM THE P.A.D.
(B) CONTRACTOR TO BE RESPONSIBLE FOR THE SELECTION, PURCHASE AND INSTALLATION OF THIS PRODUCT BASED ON THIS P.A.D, PROVIDED HE/SHE DOES NOT DEVIATE FROM THE CONDITIONS DETAILED ON THIS DOCUMENT. CONSTRUCTION SAFETY AT SITE IS THE CONTRACTOR'S RESPONSIBILITY.
(C) THIS P.A.D. WILL BE CONSIDERED INVALID IF MODIFIED.
(D) SITE SPECIFIC PROJECTS SHALL BE PREPARED BY A FLORIDA REGISTERED ENGINEER OR ARCHITECT WHICH WILL BECOME THE ENGINEER OF RECORD (E.O.R.) FOR THE PROJECT AND WHO WILL BE RESPONSIBLE FOR THE PROPER USE OF THE P.A.D. ENGINEER OF RECORD, ACTING AS A DELEGATED ENGINEER TO THE P.A.D. ENGINEER, SHALL SUBMIT TO THIS LATTER THE SITE SPECIFIC DRAWINGS FOR REVIEW.
(E) THIS P.A.D. SHALL BEAR THE DATE AND ORIGINAL SEAL AND SIGNATURE OF THE PROFESSIONAL ENGINEER OF RECORD THAT PREPARED IT.

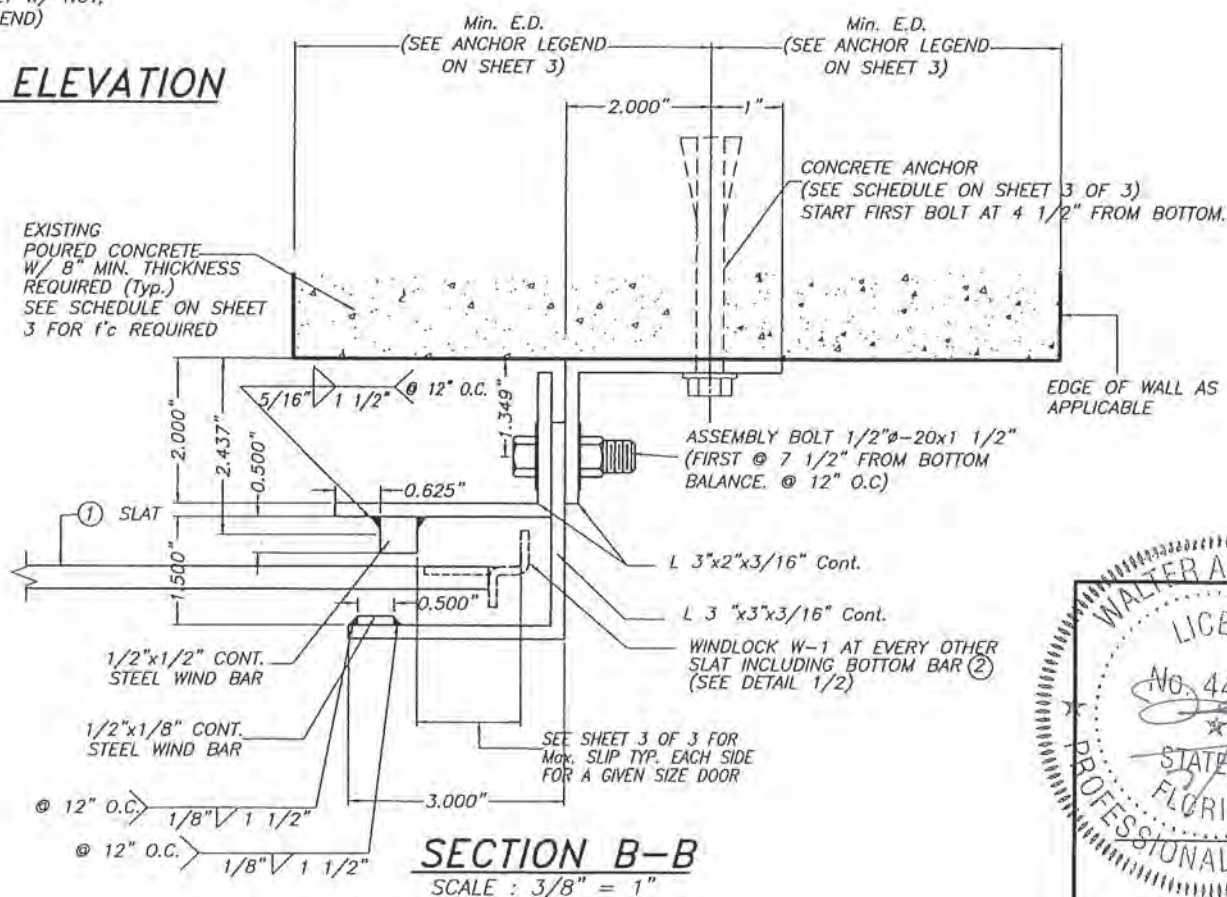
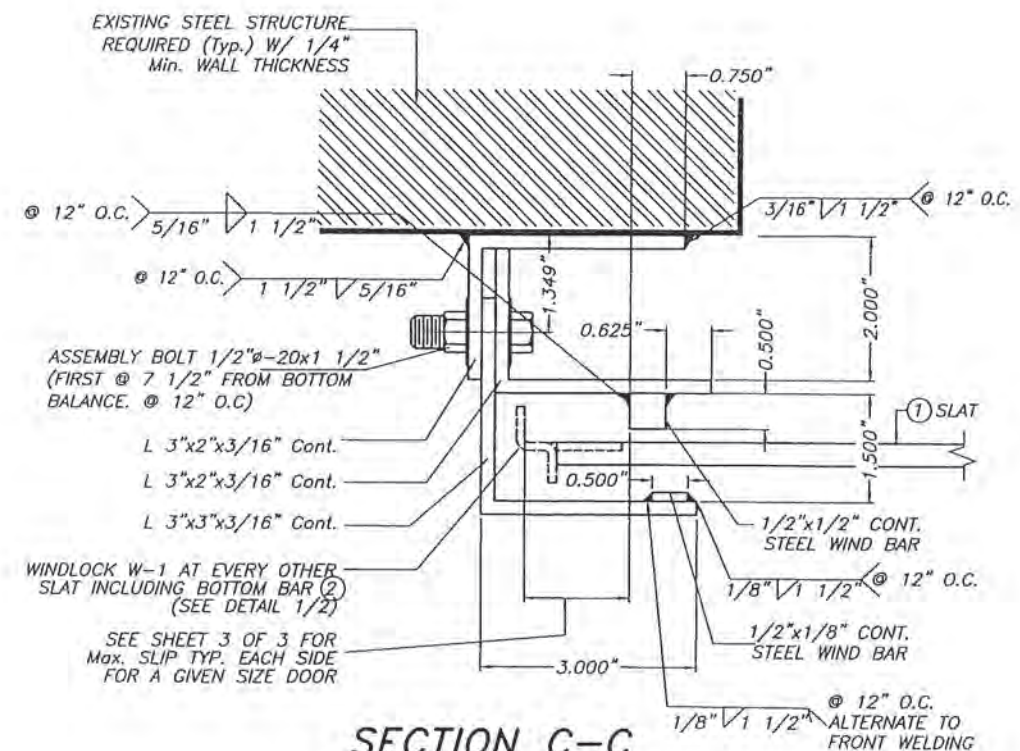
PRODUCT RENEWED
as complying with the Florida
Building Code
NOA-No. 24-1211.03
Expiration Date Dec. 28, 2025
By 
Miami-Dade Product Control



© 2023 TILTECO, INC					
					
TILLIT TESTING & ENGINEERING COMPANY 6355 N.W. 36th St., Ste. 305, VIRGINIA GARDENS, FL 33166 Phone : (305)871-1530 . Fax : (305)871-1531 e-mail: tilliteco@aol.com CA-0006719 WALTER A. TILLIT Jr. P.E. FLORIDA Lic. # 44167					
FLORIDA BUILDING CODE (High Velocity Hurricane Zone)					
26'-0" MAXIMUM WIDE, 20 GAGE SLAT ROLL-UP DOOR				Y.M. DRAWN BY:	
ROLLING DOOR INDUSTRIES, LLC. 8214 NW 64 ST MIAMI, FL. 33166 PH: 305-599-9977 FAX: 305-599-9979				7/7/2023 DATE	
REV. No				23-067 DRAWING No	
DESCRIPTION				DATE	
1				OLD 20-136	
2				-	
3				-	
4				-	
5				-	
6				-	
7				-	
8				-	
9				-	
10				-	
11				-	
12				-	
13				-	
14				-	
15				-	
16				-	
17				-	
18				-	
19				-	
20				-	
21				-	
22				-	
23				-	
24				-	
25				-	
26				-	
27				-	
28				-	
29				-	
30				-	
31				-	
32				-	
33				-	
34				-	
35				-	
36				-	
37				-	
38				-	
39				-	
40				-	
41				-	
42				-	
43				-	
44				-	
45				-	
46				-	
47				-	
48				-	
49				-	
50				-	
51				-	
52				-	
53				-	
54				-	
55				-	
56				-	
57				-	
58				-	
59				-	
60				-	
61				-	
62				-	
63				-	
64				-	
65				-	
66				-	
67				-	
68				-	
69				-	
70				-	
71				-	
72				-	
73				-	
74				-	
75				-	
76				-	
77				-	
78				-	
79				-	
80				-	
81				-	
82				-	
83				-	
84				-	
85				-	
86				-	
87				-	
88				-	
89				-	
90				-	
91				-	
92				-	
93				-	
94				-	
95				-	
96				-	
97				-	
98				-	
99				-	
100				-	
101				-	
102				-	
103				-	
104				-	
105				-	
106				-	
107				-	
108				-	
109				-	
110				-	
111				-	
112				-	
113				-	
114				-	
115				-	
116				-	
117				-	
118				-	
119				-	
120				-	
121				-	
122				-	
123				-	
124				-	
125				-	
126				-	
127				-	
128				-	
129				-	
130				-	
131				-	
132				-	
133				-	
134				-	
135				-	
136				-	
137				-	
138				-	
139				-	
140				-	
141				-	
142				-	
143				-	
144				-	
145				-	
146				-	
147				-	
148				-	
149				-	
150				-	
151				-	
152				-	
153				-	
154				-	
155				-	
156				-	
157				-	
158				-	
159				-	
160				-	
161				-	
162				-	
163				-	
164				-	
165				-	
166				-	
167				-	
168				-	
169				-	
170				-	
171				-	
172				-	
173				-	
174				-	
175				-	
176				-	
177				-	
178				-	
179				-	
180				-	
181				-	
182				-	
183				-	
184				-	
185				-	
186				-	
187				-	
188				-	
189				-	
190				-	
191				-	
192				-	
193				-	
194				-	
195				-	
196				-	
197				-	
198				-	
199				-	
200				-	
201				-	
202				-	
203				-	
204				-	
205				-	
206				-	
207				-	
208				-	
209				-	
210				-	
211				-	
212				-	
213				-	
214				-	
215				-	
216				-	
217				-	
218				-	
219				-	
220				-	
221				-	
222				-	
223				-	
224				-	
225				-	
226				-	
227				-	
228				-	
229				-	
230				-	
231				-	
232				-	
233				-	
234				-	
235				-	
236				-	
237				-	
238				-	
239				-	
240				-	
241				-	
242				-	
243				-	
244				-	
245				-	
246				-	
247				-	
248				-	
249				-	
250				-	
251				-	
252				-	
253				-	
254				-	
255				-	
256				-	
257				-	
258				-	
259				-	
260				-	
261				-	
262				-	
263				-	
264				-	
265				-	
266				-	
267				-	
268				-	
269				-	
270				-	
271				-	
272				-	
273				-	
274				-	
275				-	
276				-	
277				-	
278				-	
279				-	
280				-	
281				-	
282				-	
283				-	
284				-	
285				-	
286				-	
287				-	
288				-	
289				-	
290				-	
291				-	
292				-	
293				-	
294				-	
295				-	
296				-	
297				-	
298				-	
299				-	
300				-	
301				-	
302				-	
303				-	
304				-	
305				-	
306				-	
307				-	
308				-	
309				-	
310				-	
311				-	
312				-	
313				-	
314				-	
315				-	
316				-	
317				-	
318				-	
319				-	
320				-	
321				-	
322				-	
323				-	
324				-	
325				-	
326				-	
327				-	
328				-	
329				-	
330				-	
331				-	
332				-	
333				-	
334				-	
335				-	
336				-	
337				-	
338				-	
339				-	
340				-	
341				-	
342				-	
343				-	
344				-	
345				-	
346				-	
347				-	
348				-	
349				-	
350				-	
351				-	
352				-	
353				-	
354				-	
355				-	
356				-	
357				-	
358				-	
359				-	
360				-	
361				-	
362				-	
363				-	
364				-	
365				-	
366				-	
367				-	
368				-	
369				-	
370				-	
371				-	
372				-	
373				-	
374				-	
375				-	
376				-	
377				-	
378				-	
379				-	
380				-	
381				-	
382				-	
383				-	
384				-	
385				-	
386				-	
387				-	
388				-	
389				-	
390				-	
391				-	
392				-	
393				-	
394				-	
395				-	
396				-	
397				-	
398				-	
399				-	
400				-	
401				-	
402				-	
403				-	
404				-	
405				-	
406				-	
407				-	
408				-	
409				-	
410				-	
411				-	
412				-	
413				-	
414				-	
415				-	
416				-	
417				-	
418				-	
419				-	
420				-	
421				-	
422				-	
423				-	
424				-	
425				-	
426				-	
427				-	
428				-	
429				-	
430				-	
431				-	
432				-	
433				-	
434				-	
435				-	
436				-	
437				-	
438				-	
439				-	
440				-	
441				-	
442				-	
443				-	
444				-	
445				-</	



① **FLAT SLAT**
SCALE: 1/2" = 1"



PRODUCT RENEWED
as complying with the Florida
Building Code
NOA-No. 24-1211.03

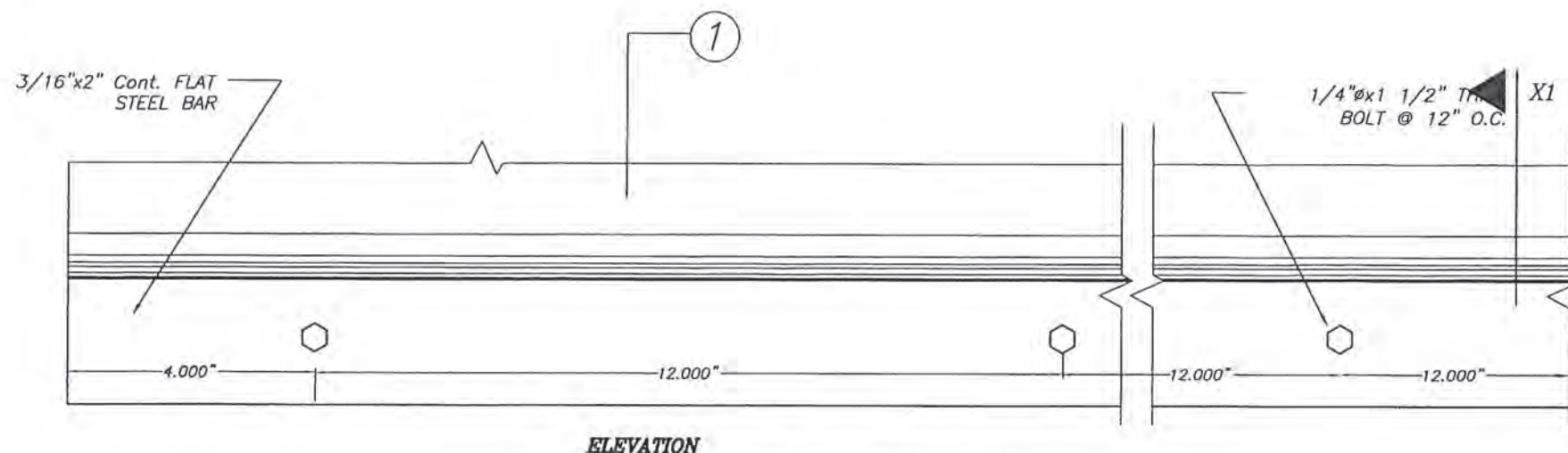
Expiration Date Dec. 28, 2025

By
Miami-Dade Product Control



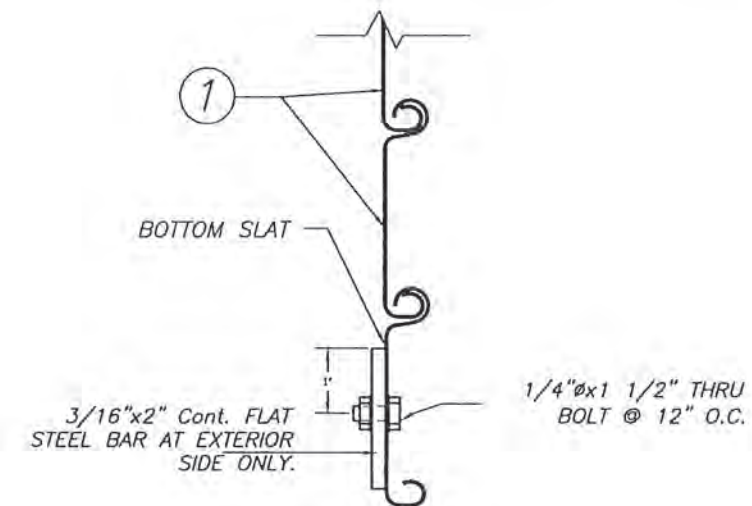
FLORIDA BUILDING CODE (High Velocity Hurricane Zone)					
 TILTECO INC. TILLIT TESTING & ENGINEERING COMPANY 6355 N.W. 36th St., Ste. 305, VIRGINIA GARDENS, FL 33166 Phone: (305)871-1530 • Fax: (305)871-1531 e-mail: tilteco@aol.com CA-0006719 WALTER A. TILLIT Jr. P.E. FLORIDA Lic. # 44167			26'-0" MAXIMUM WIDE, 20 GAGE SLAT ROLL-UP DOOR		
ROLLING DOOR INDUSTRIES, LLC. 8214 NW 64 ST MIAMI, FL. 33166 PH: 305-599-9977 FAX: 305-599-9979			Y.M. DRAWN BY:		
7/7/2023 DATE			23-067 DRAWING No		
REV. No	DESCRIPTION	DATE	REV. No	DESCRIPTION	DATE
1	OLD 20-138	7/7/2023	3	-	-
2	-	-	4	-	-

SHEET 1A OF 3

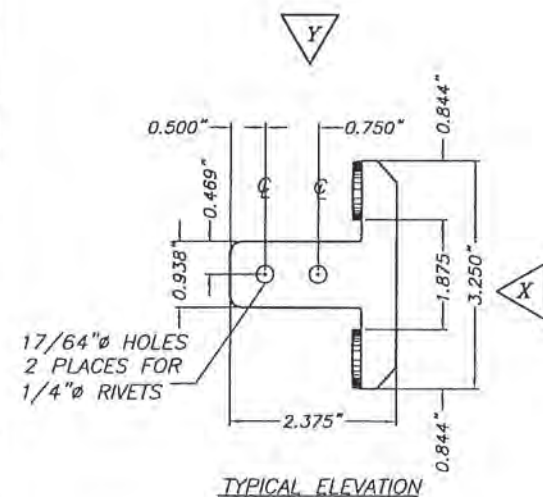


ELEVATION

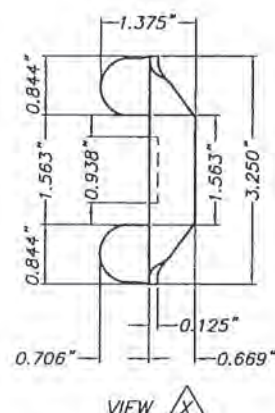
② BOTTOM BAR
SCALE : 3/8" = 1"



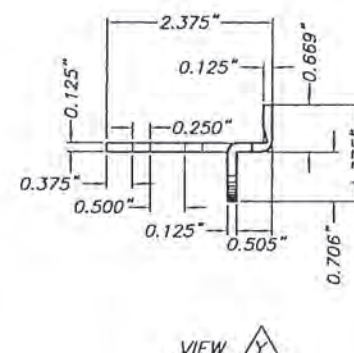
SECTION XI



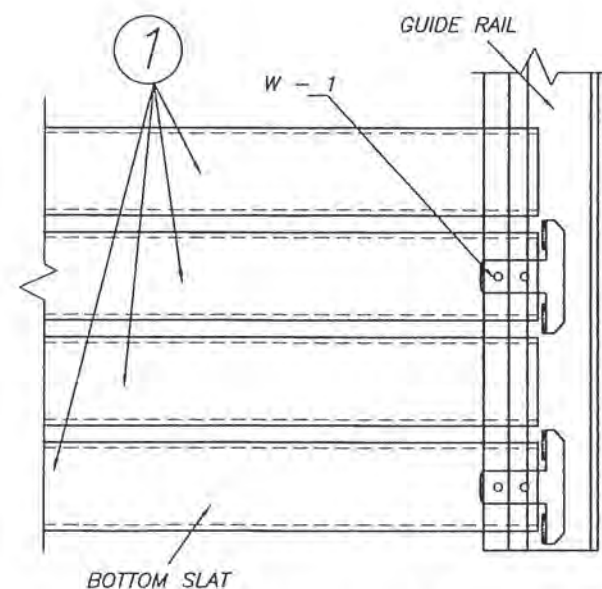
TYPICAL ELEVATION



VIEW X



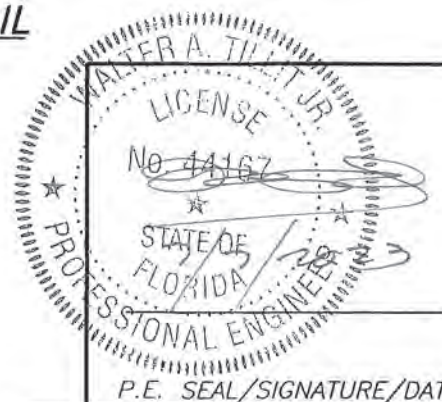
VIEW Y



DETAIL 1 (elevation)
N.T.S.

③ TYPICAL WINDLOCK W - 1 DETAIL
SCALE : 3/8" = 1"

COMPONENTS



© 2023 TILTECO, INC.

TILTECO INC.

TILLIT TESTING & ENGINEERING COMPANY
6355 N.W. 38th St., Ste. 305, VIRGINIA GARDENS, FL 33166
Phone : (305)871-1530 Fax : (305)871-1531
e-mail: tilteco@aol.com

CA-0006719
WALTER A. TILLIT Jr. P.E.
FLORIDA Lic. # 44167

FLORIDA BUILDING CODE (High Velocity Hurricane Zone)

26'-0" MAXIMUM WIDE, 20 GAGE SLAT
ROLL-UP DOOR

Y.M.
DRAWN BY:

ROLLING DOOR INDUSTRIES, LLC.

7/7/2023
DATE

8214 NW 64 ST
MIAMI, FL 33166
PH: 305-599-9977 FAX: 305-599-9979

23-067
DRAWING No

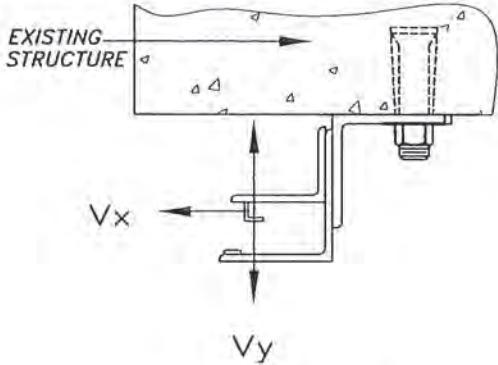
REV. No	DESCRIPTION	DATE	REV. No	DESCRIPTION	DATE
1	OLD 20-135	7/7/2023	3	-	-
2	-	-	4	-	-

SHEET 2 OF 3

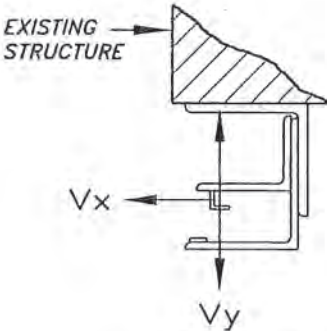
PRODUCT RENEWED
as complying with the Florida
Building Code
NOA-No. 24-1211.03
Expiration Date Dec. 28, 2025
By 
Miami-Dade Product Control

Vx & Vy REACTIONS & ANCHOR SPACING SCHEDULE


MAXIMUM A.S.D. DESIGN PRESSURE RATING (PSF)	DOOR WIDTH (Ft.)	SLIP (In)	Vx (Lb/Ft)	Vy (Lb/Ft)	MAX. ANCHOR SPACING TO POURED CONCRETE					
					ANCHOR TYPE 1 *			ANCHOR TYPE 2 *		
					f'c = 3 ksi Min.	f'c = 4 ksi Min.	f'c = 6 ksi Min.	f'c = 3 ksi Min.	f'c = 4 ksi Min.	f'c = 6 ksi Min.
+50.0, -50.0	16'-0"	5/8"	1436	400	11"	11"	11"	11"	11"	11"
	18'-0"	1"	1419	450	11"	11"	11"	11"	11"	11"
	20'-0"	1 1/4"	1532	500	11"	11"	11"	11"	11"	11"
	24'-0"	1 1/2"	1885	600	10 1/2"	11"	11"	11"	11"	11"
	26'-0"	1 1/2"	2125	650	9"	10 1/2"	11"	10"	11"	11"
+55.0, -55.0	16'-0"	5/8"	1591	440	11"	11"	11"	11"	11"	11"
	18'-0"	1"	1569	495	11"	11"	11"	11"	11"	11"
	20'-0"	1 1/4"	1689	550	11"	11"	11"	11"	11"	11"
	24'-0"	1 1/2"	2071	660	9 1/2"	10 1/2"	11"	10"	11"	11"
	26'-0"	1 1/2"	2331	715	8 1/2"	9 1/2"	10 1/2"	9"	10"	10 1/2"
+60.0, -60.0	16'-0"	5/8"	1743	480	11"	11"	11"	11"	11"	11"
	18'-0"	1"	1718	540	11"	11"	11"	11"	11"	11"
	20'-0"	1 1/4"	1845	600	10 1/2"	11"	11"	11"	11"	11"
	24'-0"	1 1/2"	2256	720	8 1/2"	10"	10 1/2"	9 1/2"	10 1/2"	11"
	26'-0"	1 1/2"	2536	780	7 1/2"	8 1/2"	9 1/2"	8 1/2"	9 1/2"	9 1/2"
+70.0, -70.0	16'-0"	5/8"	2046	560	10"	11"	11"	10 1/2"	11"	11"
	18'-0"	1"	2012	630	10"	11"	11"	10 1/2"	11"	11"
	20'-0"	1 1/4"	2155	700	9"	10"	11"	9 1/2"	11"	11"
	24'-0"	1 1/2"	2611	840	7 1/2"	8 1/2"	9"	9"	9"	9 1/2"
	26'-0"	1 9/16"	2881	910	7 1/2" ▲	7 1/2"	8 1/2"	6 1/2"	8"	8 1/2"



LOAD DIAGRAM

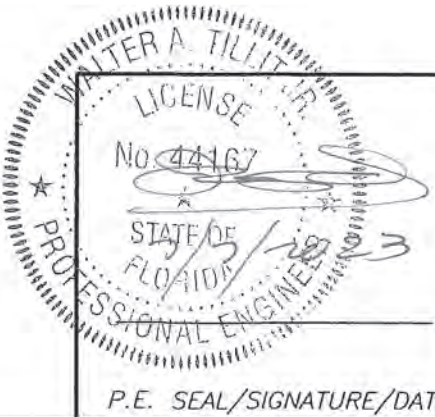


LOAD DIAGRAM

PRODUCT RENEWED
as complying with the Florida
Building Code
NOA-No. 24-1211.03
Expiration Date Dec. 28, 2025
By 
Miami-Dade Product Control

ANCHOR LEGEND
* ANCHOR TYPE 1: - 5/8"Ø POWERS FASTENERS, INC WEDGE BOLT ANCHOR W/ 5" MINIMUM EMBEDMENT, 6" MIN. EDGE DISTANCE & 8" MIN. WALL THICKNESS.
ANCHOR TYPE 2: - 3/4"Ø HILTI KWIK BOLT 3 EXPANSION ANCHOR W/ 6 1/2" MIN. EMBEDMENT, 6" MIN. EDGE DISTANCE 8" MIN. WALL THICKNESS. ONLY ALLOWED TO BE USED AT JURISDICTIONS WHERE COMPLIANCE W/ ACI 318-05 APPENDIX D IS NOT ENFORCED BY BUILDING OFFICIAL.

▲ SPACING ONLY VALID FOR 7 1/2" MIN. EDGE DISTANCE



P.E. SEAL/SIGNATURE/DATE

FLORIDA BUILDING CODE (High Velocity Hurricane Zone)					
© 2023 TILTECO, INC. TILTECO INC. TILLIT TESTING & ENGINEERING COMPANY 6355 N.W. 36th. St., Ste. 305, VIRGINIA GARDENS, FL 33166 Phone : (305)871-1530 . Fax : (305)871-1531 e-mail: tilteco@aol.com CA-0006719 WALTER A. TILLIT Jr. P.E. FLORIDA Lic. # 44167			26'-0" MAXIMUM WIDE, 20 GAGE SLAT ROLL-UP DOOR		Y.M. DRAWN BY:
			ROLLING DOOR INDUSTRIES, LLC. 8214 NW 64 ST MIAMI, FL 33166 PH: 305-599-9977 FAX: 305-599-9979		7/7/2023 DATE
					23-067 DRAWING No
REV. No	DESCRIPTION	DATE	REV. No	DESCRIPTION	DATE
1	OLD 20-138	7/7/2023	3	-	-
2	-	-	4	-	-
					SHEET 3 OF 3