



DEPARTMENT OF REGULATORY AND ECONOMIC RESOURCES (RER)  
BOARD AND CODE ADMINISTRATION DIVISION

## NOTICE OF ACCEPTANCE (NOA)

MIAMI-DADE COUNTY  
PRODUCT CONTROL SECTION

11805 SW 26 Street, Room 208  
Miami, Florida 33175-2474  
T (786) 315-2590 F (786) 315-2599

[www.miamidade.gov/economy](http://www.miamidade.gov/economy)

**Sto Corporation**  
**3800 Camp Creek Parkway, Bldg. 1400 Ste. 120**  
**Atlanta, GA 30331**

### SCOPE:

This NOA is being issued under the applicable rules and regulations governing the use of construction materials. The documentation submitted has been reviewed and accepted by Miami-Dade County RER-Product Control Section to be used in Miami-Dade County and other areas where allowed by the Authority Having Jurisdiction (AHJ).

This NOA shall not be valid after the expiration date stated below. The Miami-Dade County Product Control Section (In Miami-Dade County) and/ or the AHJ (in areas other than Miami-Dade County) reserve the right to have this product or material tested for quality assurance purposes. If this product or material fails to perform in the accepted manner, the manufacturer will incur the expense of such testing and the AHJ may immediately revoke, modify, or suspend the use of such product or material within their jurisdiction. RER reserves the right to revoke this acceptance if it is determined by Miami-Dade County Product Control Section that this product or material fails to meet the requirements of the applicable building code.

This product is approved as described herein and has been designed to comply with the Florida Building Code, including the High Velocity Hurricane Zone.

### DESCRIPTION:

**Sto Powerwall GMG Wall Panel System with Structa Wire Twin Trac 2.5 and Stucco over 5/8" eXP. Gypsum Sheathing**

**APPROVAL DOCUMENT:** Drawing titled "Sto Powerwall GMG with Structa Wire Twin Trac 2.5", sheets 1 through 3 of 3, prepared by the manufacturer, dated May 2024, signed and sealed by William R. Heiden III, P.E., on 11/07/2024, bearing the Miami-Dade County Product Control revision stamp with the Notice of Acceptance number and expiration date by the Miami-Dade County Product Control Section.

**MISSILE IMPACT RATING: Large and Small Missile Impact Resistant.**

**LABELING:** Each unit shall bear a permanent label with the manufacturer's name or logo, model (Powerwall HI), city, state and following statement: "Miami-Dade County Product Control Approved", unless otherwise noted herein. Each container (bucket or drum) needs to be labeled. Unit is further defined as each roll of reinforcing mat or mesh.

**RENEWAL** of this NOA shall be considered after a renewal application has been filed and there has been no change in the applicable building code negatively affecting the performance of this product.

**TERMINATION** of this NOA will occur after the expiration date or if there has been a revision or change in the materials, use, and/ or manufacture of the product or process. Misuse of this NOA as an endorsement of any product, for sales, advertising or any other purposes shall automatically terminate this NOA. Failure to comply with any section of this NOA shall be cause for termination and removal of NOA.

**ADVERTISEMENT:** The NOA number preceded by the words Miami-Dade County, Florida, and followed by the expiration date may be displayed in advertising literature. If any portion of the NOA is displayed, then it shall be done in its entirety.

**INSPECTION:** A copy of this entire NOA shall be provided to the user by the manufacturer or its distributors and shall be available for inspection at the job site at the request of the Building Official.

This NOA revises **NOA # 23-0518.03** and consists of this page 1 and evidence page E-1, as well as the approval document mentioned above.

The submitted documentation was reviewed by **Carlos M. Utrera, P.E.**



07/15/25

**NOA No. 25-0107.09**  
**Expiration Date: August 03, 2028**  
**Approval Date: July 24, 2025**  
**Page 1**

**NOTICE OF ACCEPTANCE: EVIDENCE SUBMITTED**

**1. Evidence submitted under NOA # 23-0518.03 and new**

**A. DRAWINGS**

1. Drawing titled “Sto Powerwall GMG with Structa Wire Twin Trac 2.5”, sheets 1 through 3 of 3, prepared by the manufacturer, dated May 2024, signed and sealed by William R. Heiden III, P.E., on 11/07/2024.

**B. TESTS**

1. Test reports on
  - 1) Air Infiltration Test, per FBC, TAS 202-94
  - 2) Uniform Static Air Pressure Test, Loading per FBC TAS 202-94
  - 3) Water Resistance Test, per FBC, TAS 202-94
  - 4) Large Missile Impact Test per FBC, TAS 201-94
  - 5) Cyclic Wind Pressure Loading per FBC, TAS 203-94along with marked-up drawings and installation diagram of Powerwall HI with Structa Wire Twin Trac 2.5 by ClarkDietrich, prepared by Intertek, Test Report No. **P5478.01-550-18 R0**, dated 03/01/2023, revised on 04/04/2023, signed and sealed by Tanya A. Dolby, P.E.

**C. CALCULATIONS**

1. None.

**D. QUALITY ASSURANCE**

1. Miami-Dade Department of Regulatory and Economic Resources (RER).

**E. MATERIAL CERTIFICATIONS**

1. None

**F. STATEMENTS**

1. Drawing statement of code conformance to the 8<sup>th</sup> edition (2023) of the FBC, issued by Sto Corporation, dated 11/07/2024, and signed and sealed by William R. Heiden III, P.E.
2. Statement letters of code conformance to the 7<sup>th</sup> edition (2020) of the FBC and of no financial interest, issued by William R. Heiden III, P.E., both dated 07/06/2023, and signed and sealed by William R. Heiden III, P.E.



---

**Carlos M. Utrera, P.E.**  
**Product Control Examiner**  
**NOA No. 25-0107.09**  
**Expiration Date: August 03, 2028**  
**Approval Date: July 24, 2025**

Description:

1.0 Substrates and Sto products approved with the system

- 1.1 18 ga., 6" x 1 5/8" steel studs at 16" o.c.
- 1.2 5/8" National Gypsum eXP ASTM C 1177 compliant sheathing fastened to framing with No. 8 wafer head self drill screws at 8" o.c. along studs and perimeter
- 1.3 Sto Primer/Adhesive-B polymer modified portland cement base coat used to embed reinforcing mesh on sheathing
- 1.4 Sto Armor Mat XX, 20 oz./yd<sup>2</sup> glass fiber reinforcing embedded in Sto Primer/Adhesive-B on sheathing
- 1.5 StoGuard with Sto Gold Coat air and moisture barrier coating applied to dry Sto Primer/Adhesive-B
- 1.6 Sto Powerwall Stucco: pre-bagged portland cement stucco mixed with sand and water in the field
- 1.7 Sto Textured finishes / StoCast finishes

2.0 Application

- 2.1 Sto Primer/Adhesive-B base coat is mixed in accordance with written instructions on the bag and used to fully embed Sto Armor Mat XX reinforcing mesh on the sheathing surface. Base coat is allowed to dry overnight.
- 2.2 Sto Guard with Sto Gold Coat is applied to the dry base coat in accordance with Sto written instructions.
- 2.3 One layer of Type D, No. 15 asphalt saturated kraft paper is placed over dry Sto Gold Coat as a slip-sheet.
- 2.4 Fasten Structa Wire Twin Trac 2.5 at nominal 6" o.c. along studs in accordance with ASTM C 1063 and Structa Wire published installation instructions.
- 2.5 Apply Sto Powerwall stucco as scratch and brown coat. Mix stucco with approximately 200 lbs of clean sand and potable water in accordance with instructions printed on bag. Moist cure brown coat minimum 48 hours, then allow to dry, before applying finish
- 2.6 Apply Sto Textured Finishes / StoCast Finishes in accordance with manufacturer's published product instructions.

General Notes:

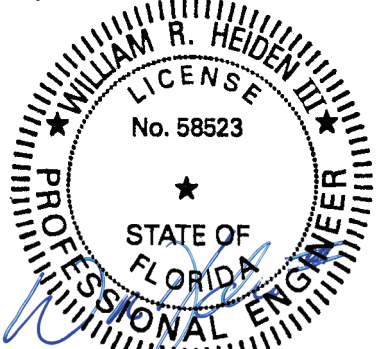
- 1. This system has been designed in accordance with the Florida Building Code, 2020 and 2023 Edition.
- 2. This system has been tested in accordance with Florida Building Code TAS 201, TAS 202, and TAS 203.
- 3. This system shall be applied by a licensed plastering contractor.
- 4. The Engineer or Architect of Record for each project using this system shall design the framing and sheathing as required by governing codes and this document.
- 5. All studs used with this system shall be completely sheathed at the interior flange or bridged at a maximum every 5 ft. of stud length or as specified by stud manufacturer.
- 6. All steel studs shall be structural with 1 5/8" minimum flange width and a minimum yield strength of 33000 psi.

PRODUCT REVISED  
as complying with the Florida  
Building Code  
NOA-No. 25-0107.09

Expiration Date 08/03/2028

By   
Miami-Dade Product Control

Review by:



November 7, 2024

Sto Powerwall GMG  
with Structa Wire Twin Trac 2.5  
Large Missile Impact Stucco System  
over frame construction

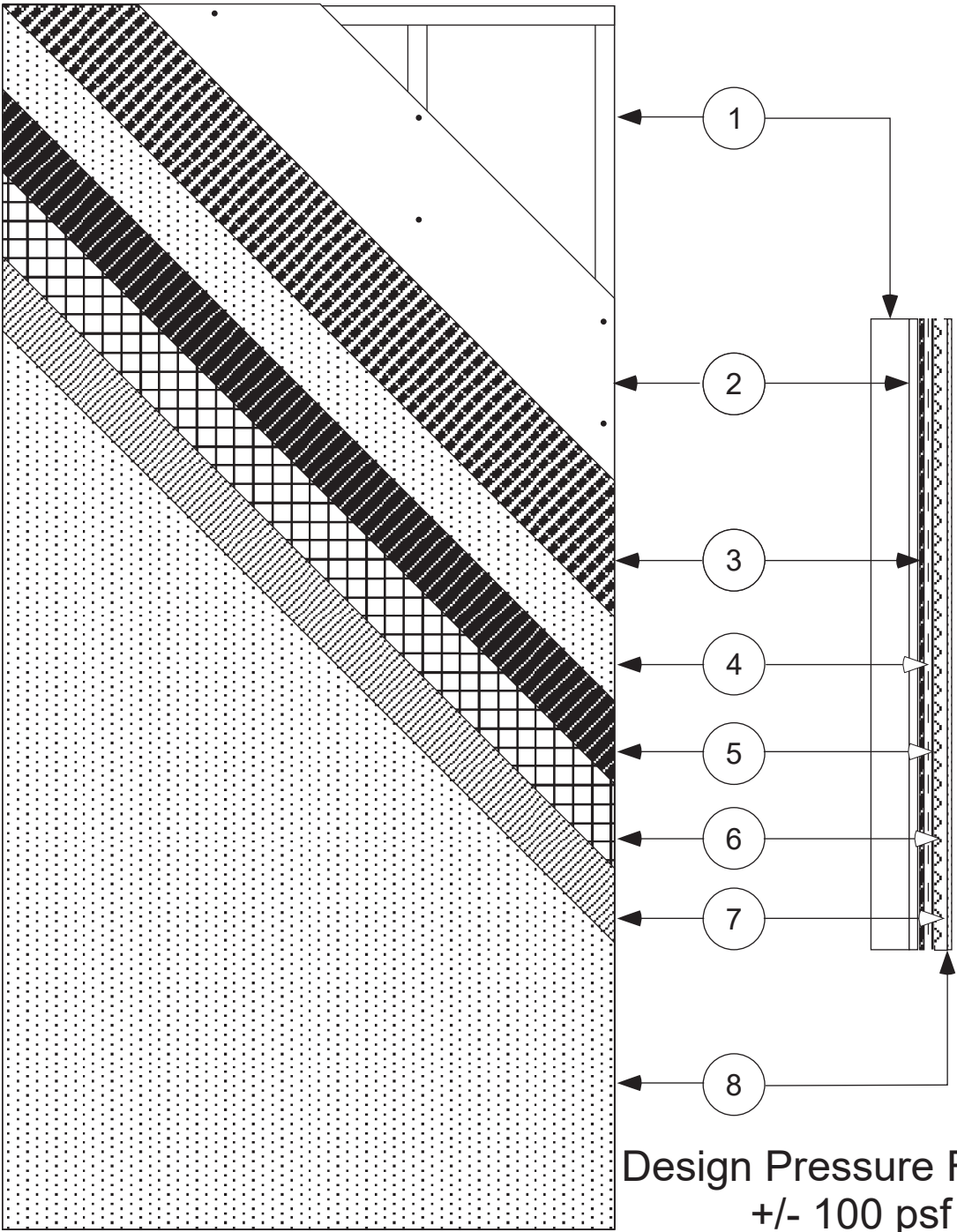
Sto Corp.  
3800 Camp Creek Pkwy  
Bldg. 1400, Ste 120  
Atlanta, GA 30331

Drawing 1 of 3

MAY 2024

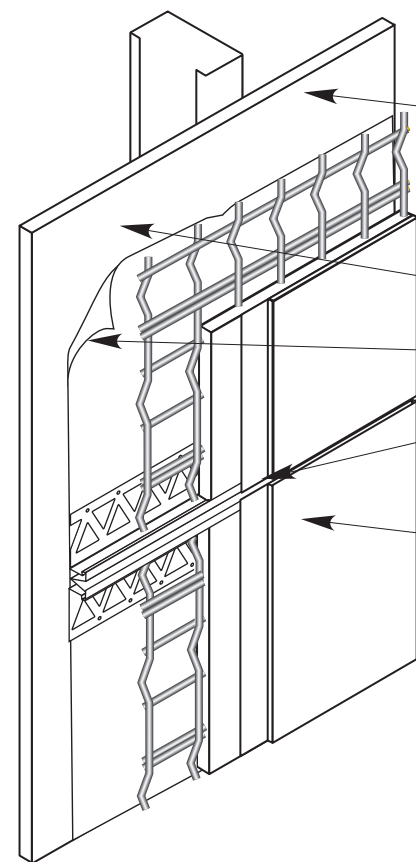
Not to Scale

Drawn by: TLV

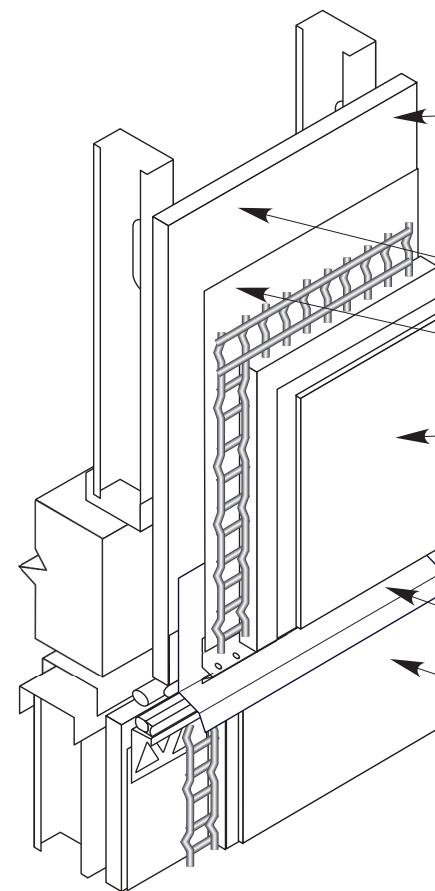


KEY:

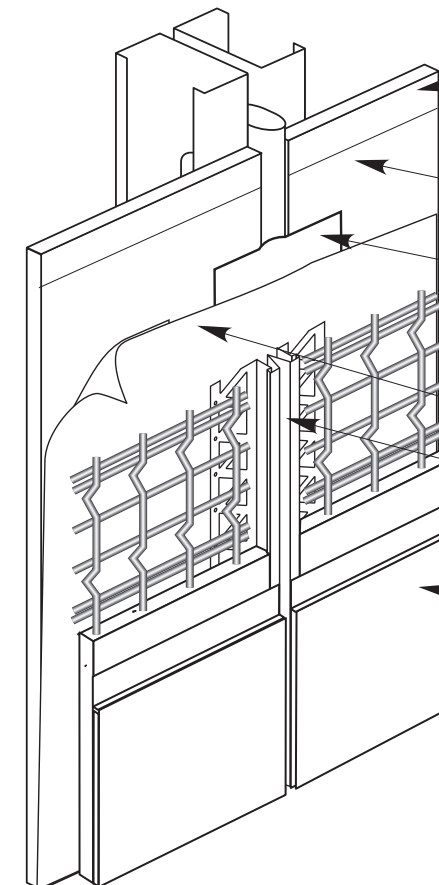
- ① 1 5/8" by 6", 18 ga steel studs at 16" o.c.
- ② 5/8" National Gypsum eXP ASTM C1177 compliant sheathing fastened with No. 8 wafer head screws at 8" o.c.
- ③ Sto Armor Mat XX embedded in Sto Primer/Adhesive-B
- ④ StoGuard with Sto Gold Coat
- ⑤ One layer Type D No. 15 asphalt saturated kraft paper slip sheet
- ⑥ Structa Wire Twin Trac 2.5 by ClarkDietrich fastened with No. 8 wafer head screws at 6" o.c.
- ⑦ StoPowerwall Stucco
- ⑧ Sto Textured Finishes / StoCast Finishes



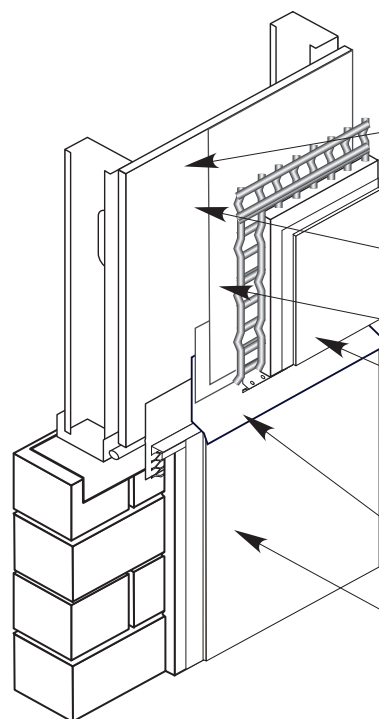
ONE PIECE CONTROL JOINT



FLOOR LINE JOINT WITH FLASHING



ONE PIECE EXPANSION JOINT



TRANSITION TO MASONRY CONSTRUCTION BELOW

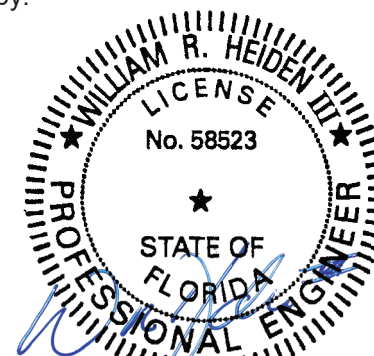
**PRODUCT REVISED**  
as complying with the Florida  
Building Code  
NOA-No. 25-0107.09  
Expiration Date 08/03/2028  
By *[Signature]*  
Miami-Dade Product Control

NOTES:

1. STRUCTA WIRE TWIN TRAC 2.5 MANUFACTURED BY CLARKDIETRICH
2. PLASTER ACCESSORIES TO BE E-FLANGE STYLE PVC WHEN AVAILABLE OR GALVANIZED OR ZINC ALLOY.

TYPICAL DETAIL SHEET

Review by:



November 7, 2024

**Sto Powerwall GMG**  
**with Structa Wire Twin Trac 2.5**  
Large Missile Impact Stucco System  
over frame construction

Sto Corp.  
3800 Camp Creek Pkwy  
Bldg. 1400, Ste 120  
Atlanta, GA 30331

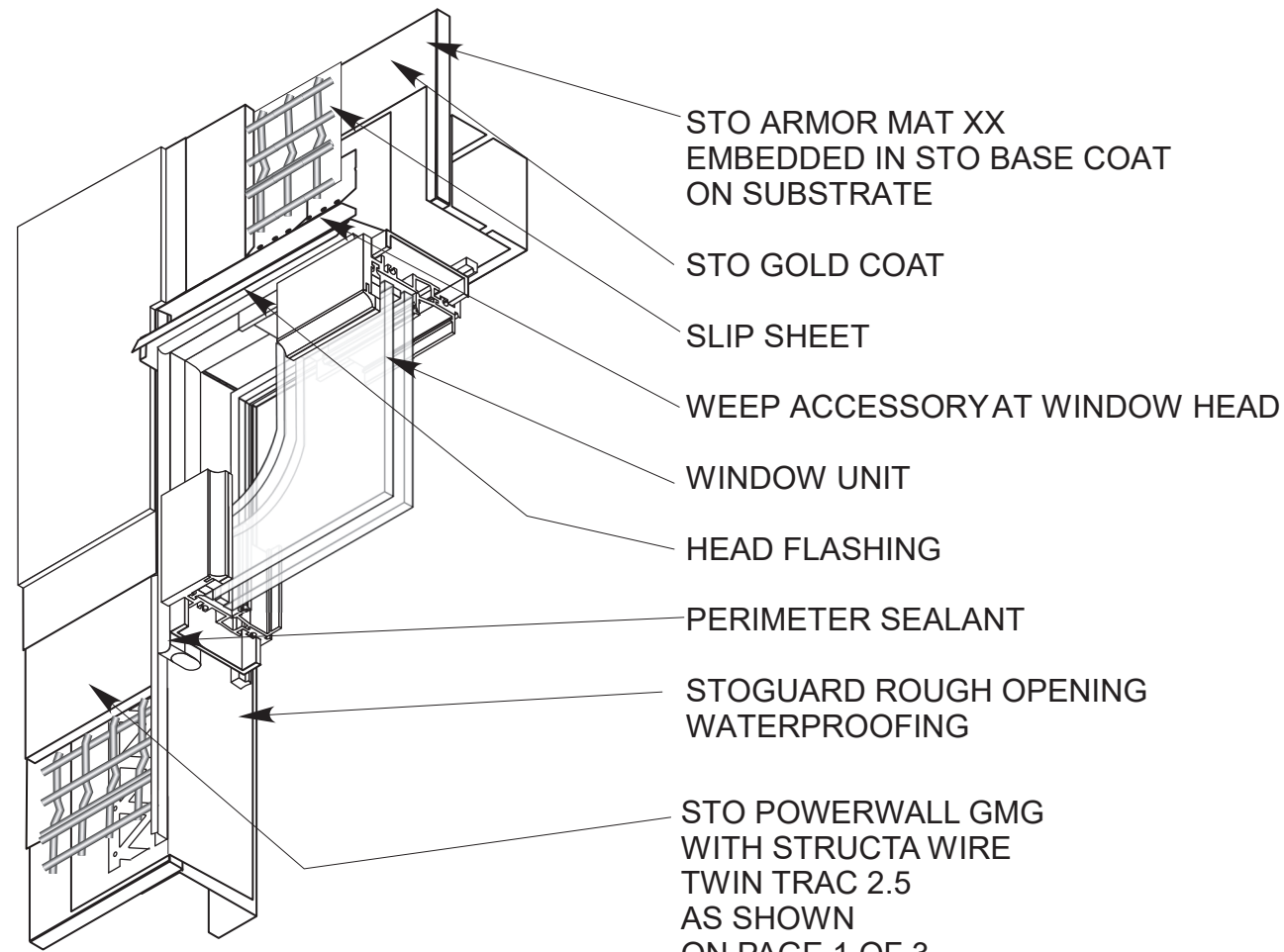
Drawing 2 of 3

MAY 2024

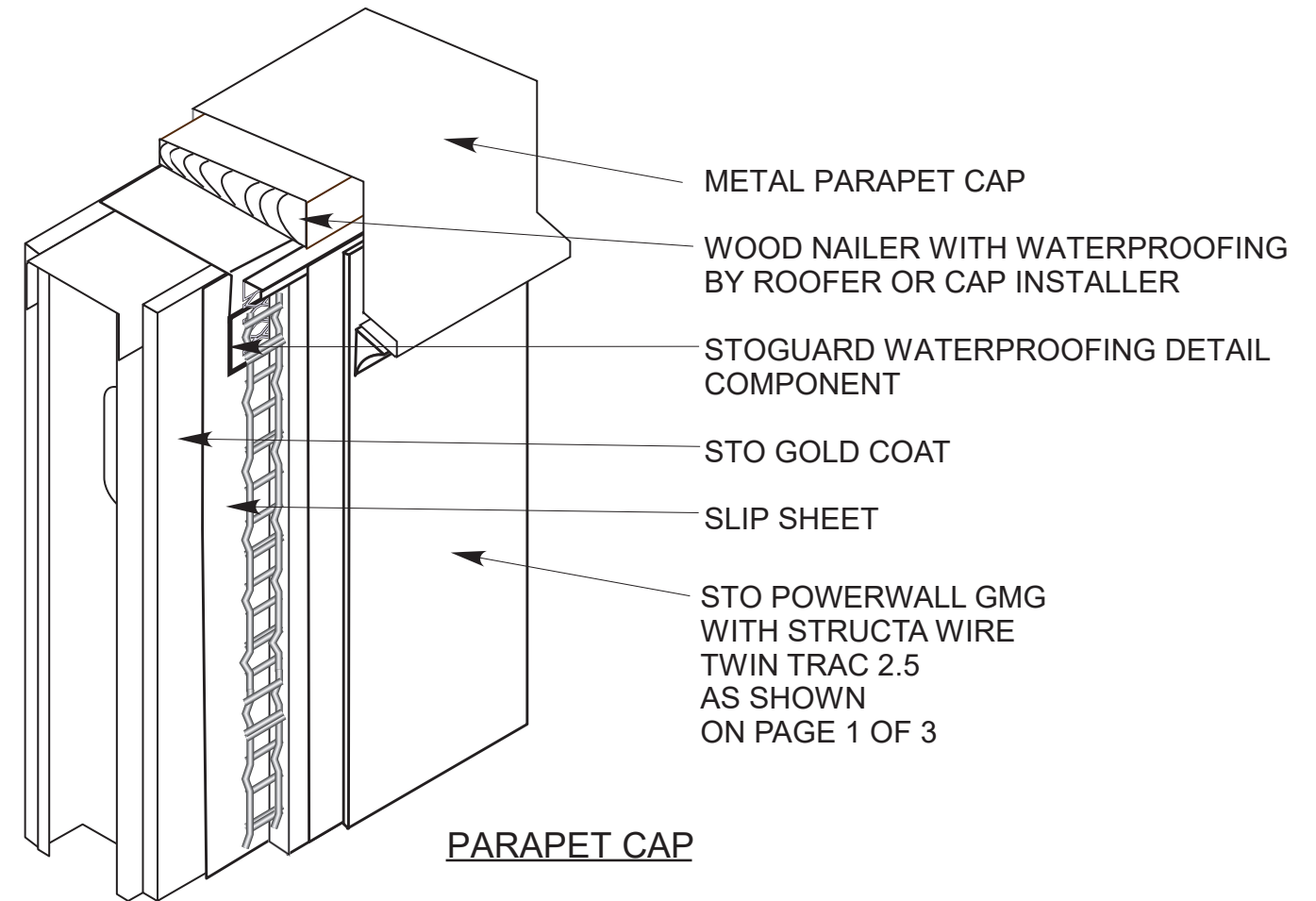
Not to Scale

Drawn by: TLV

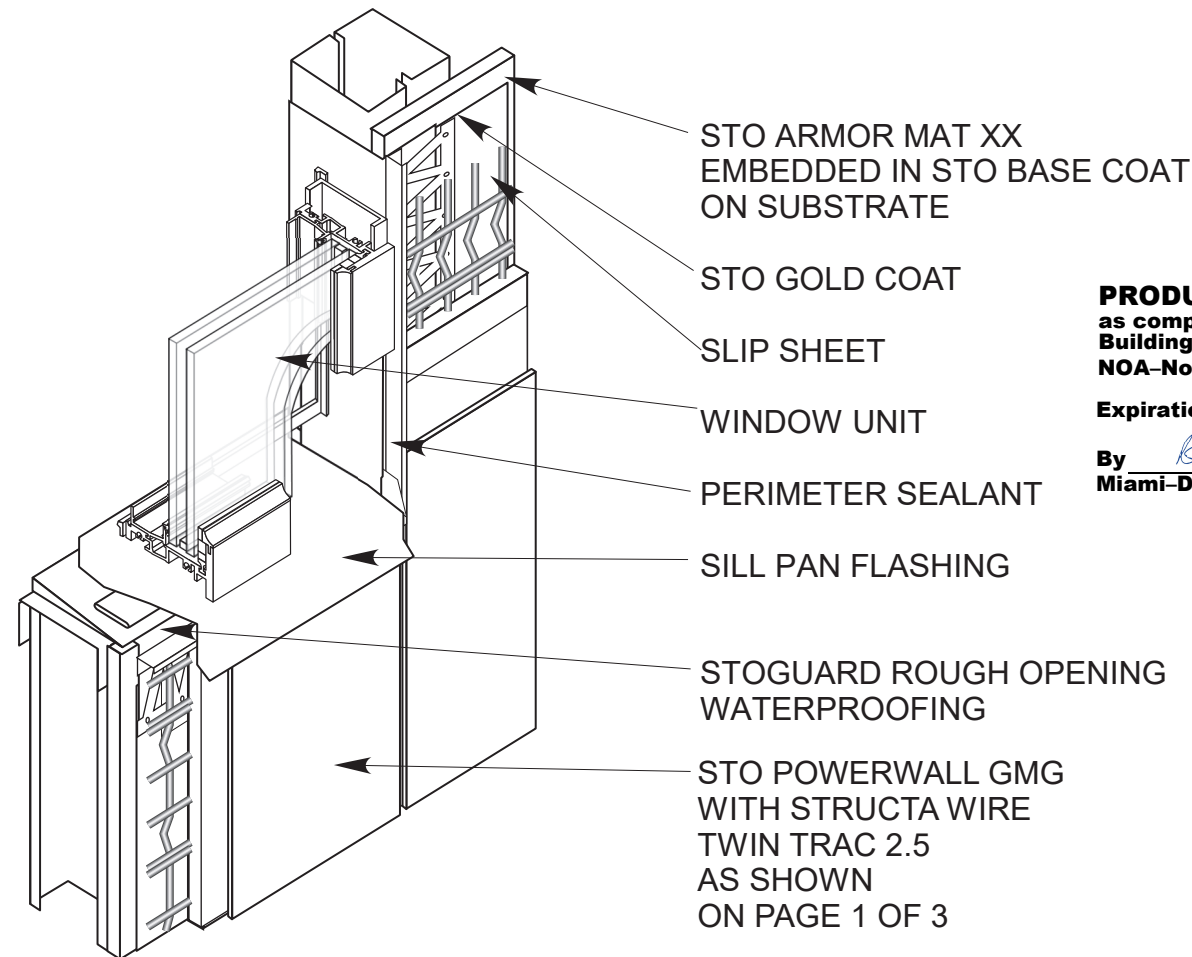




WINDOW HEAD AND JAMB




PARAPET CAP



WINDOW SILL AND JAMB

**NOTES:**

1. STRUCTA WIRE TWIN TRAC 2.5 MANUFACTURED BY CLARKDIETRICH
2. PLASTER ACCESSORIES TO BE E-FLANGE STYLE PVC WHEN AVAILABLE OR GALVANIZED OR ZINC ALLOY.

**PRODUCT REVISED**  
as complying with the Florida  
Building Code  
NOA-No. 25-0107.09  
Expiration Date 08/03/2028  
By   
Miami-Dade Product Control

**TYPICAL DETAIL SHEET**

**Sto Powerwall GMG  
with Structa Wire Twin Trac 2.5**  
Large Missile Impact Stucco System  
over frame construction

Sto Corp.  
3800 Camp Creek Pkwy  
Bldg. 1400, Ste 120  
Atlanta, GA 30331

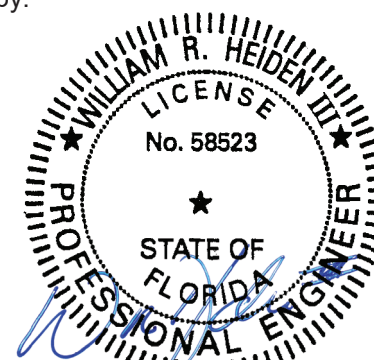
Drawing 3 OF 3

MAY 2024

Not to Scale

Drawn by: TLV

Review by:



November 7, 2024