



DEPARTMENT OF REGULATORY AND ECONOMIC RESOURCES (RER)
BOARD AND CODE ADMINISTRATION DIVISION
NOTICE OF ACCEPTANCE (NOA)

MIAMI-DADE COUNTY
PRODUCT CONTROL SECTION

11805 SW 26 Street, Room 208
Miami, Florida 33175-2474
T (786) 315-2590 F (786) 315-2599
www.miamidade.gov/economy

Greenheck Fan Corporation
1110 Greenheck Drive (P.O. Box 410)
Schofield, WI 54476

SCOPE: This NOA is being issued under the applicable rules and regulations governing the use of construction materials. The documentation submitted has been reviewed and accepted by Miami-Dade County RER-Product Control Section to be used in Miami Dade County and other areas where allowed by the Authority Having Jurisdiction (AHJ).

This NOA shall not be valid after the expiration date stated below. The Miami-Dade County Product Control Section (In Miami Dade County) and/or the AHJ (in areas other than Miami Dade County) reserve the right to have this product or material tested for quality assurance purposes. If this product or material fails to perform in the accepted manner, the manufacturer will incur the expense of such testing and the AHJ may immediately revoke, modify, or suspend the use of such product or material within their jurisdiction. RER reserves the right to revoke this acceptance if it is determined by Miami-Dade County Product Control Section that this product or material fails to meet the requirements of the applicable building code.

This product is approved as described herein and has been designed to comply with the Florida Building Code, including the High Velocity Hurricane Zone.

DESCRIPTION: Model "EHH-601DE" Aluminum Louver w/ and w/o VCD-40 Damper

APPROVAL DOCUMENT: Drawing No. **EHH-601DE**, titled "EHH-601DE", sheets 1 through 17 of 17, dated 09/30/15, with revision 01 dated 12/11/24, prepared by manufacturer, signed and sealed by Robert V. Nangia, P.E., bearing the Miami-Dade County Product Control Revision stamp with the Notice of Acceptance number and expiration date by the Miami-Dade County Product Control Section.

MISSILE IMPACT RATING: Large and Small Missile Impact Resistant

LABELING: Each unit shall bear a permanent label with the manufacturer's name or logo, Schofield, WI or Shelby, NC, model/series, and following statement: "Miami-Dade County Product Control Approved", unless otherwise noted herein.

RENEWAL of this NOA shall be considered after a renewal application has been filed and there has been no change in the applicable building code negatively affecting the performance of this product.

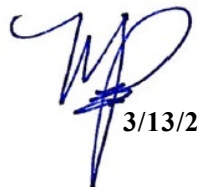
TERMINATION of this NOA will occur after the expiration date or if there has been a revision or change in the materials, use, and/or manufacture of the product or process. Misuse of this NOA as an endorsement of any product, for sales, advertising or any other purposes shall automatically terminate this NOA. Failure to comply with any section of this NOA shall be cause for termination and removal of NOA.

ADVERTISEMENT: The NOA number preceded by the words Miami-Dade County, Florida, and followed by the expiration date may be displayed in advertising literature. If any portion of the NOA is displayed, then it shall be done in its entirety.

INSPECTION: A copy of this entire NOA shall be provided to the user by the manufacturer or its distributors and shall be available for inspection at the job site at the request of the Building Official. This NOA **revises and renews NOA No. 20-0929.06** and consists of this page 1 and evidence pages E-1, and E-2, as well as approval document mentioned above.

The submitted documentation was reviewed by **Manuel Perez, P.E.**




3/13/25

NOA No. 25-0214.03
Expiration Date: December 14, 2030
Approval Date: March 13, 2025
Page 1

Greenheck Fan Corporation

NOTICE OF ACCEPTANCE: EVIDENCE SUBMITTED

1. EVIDENCE SUBMITTED UNDER PREVIOUS NOA's

A. DRAWINGS

1. Manufacturer's die drawings and sections.
(Submitted under NOA No. 15-1013.12)
2. Drawing No. **EHH-601DE**, titled "EHH-601DE NOA Drawings", sheets 1 through 9 of 9, dated 09/30/15, prepared by the manufacturer, signed and sealed by Chander P. Nangia, P.E.
(Submitted under NOA No. 15-1013.12)

B. TESTS

1. Test reports on: 1) Uniform Static Air Pressure Test, Loading per FBC, TAS 202-94
2) Large Missile Impact Test per FBC, TAS 201-94
3) Cyclic Wind Pressure Loading per FBC, TAS 203-94
along with marked-up drawings and installation diagram of Model EHH-601ED (sleeved) aluminum louvers, prepared by Architectural Testing, Inc., Test Report No. **F0138.01-602-18**, dated 09/08/15, signed and sealed by Justin P. McDonald, P.E.
(Submitted under NOA No. 15-1013.12)
2. Test reports on: 1) Uniform Static Air Pressure Test, Loading per FBC, TAS 202-94
2) Large Missile Impact Test per FBC, TAS 201-94
3) Cyclic Wind Pressure Loading per FBC, TAS 203-94
along with marked-up drawings and installation diagram of Model EHH-601ED (non-sleeved) aluminum louvers, prepared by Architectural Testing, Inc., Test Report No. **F0139.01-602-18**, dated 08/27/15, signed and sealed by Justin P. McDonald, P.E.
(Submitted under NOA No. 15-1013.12)

C. CALCULATIONS

1. Structural and anchor calculations, dated 09/30/15, prepared by manufacturer, signed and sealed by Chander P. Nangia, P.E.
(Submitted under NOA No. 15-1013.12)

D. QUALITY ASSURANCE


1. Miami-Dade Department of Regulatory and Economic Resources (RER)

E. MATERIAL CERTIFICATIONS

1. None.

F. STATEMENTS

1. Statement letter of code conformance to the **FBC 6th Edition (2017)** and **FBC 7th Edition (2020)** and of no financial interest, issued by manufacturer, dated 08/26/20, signed and sealed by Chander P. Nangia, P.E.
(Submitted under NOA No. 20-0929.06)


Manuel Perez, P.E.
Product Control Examiner
NOA No. 25-0214.03
Expiration Date: December 14, 2030
Approval Date: March 13, 2025

Greenheck Fan Corporation

NOTICE OF ACCEPTANCE: EVIDENCE SUBMITTED

1. EVIDENCE SUBMITTED UNDER PREVIOUS NOA's (CONTINUED)

G. OTHERS

1. Notice of Acceptance No. **19-0516.07**, issued to Greenheck Fan Corporation for their Model EHH-601DE Aluminum Louver, approved on 06/27/19 and expiring on 12/24/20.

2. NEW EVIDENCE SUBMITTED

A. DRAWINGS

1. Drawing No. **EHH-601DE**, titled "EHH-601DE", sheets 1 through 17 of 17, with revision 01 dated 12/11/24, prepared by manufacturer, signed and sealed by Robert V. Nangia, P.E.

B. TESTS

1. Test Report on High Velocity Wind Driven Rain Resistance per AMCA 550-22 of a Model EHH-601DE (Channel Frame) Aluminum Louver with VCD-40 Damper, prepared by Quast Consulting and Testing, Inc., Test Report No. **QCT23-7159.01**, dated 12/19/23, signed and sealed by Brian M. Sasman, P.E.
2. Test Report on High Velocity Wind Driven Rain Resistance per AMCA 550-22 of a Model EHH-601DE (Sleeve Frame) Aluminum Louver with VCD-40 Damper, prepared by Quast Consulting and Testing, Inc., Test Report No. **QCT23-7159.02**, dated 12/19/23, signed and sealed by Brian M. Sasman, P.E.

C. CALCULATIONS

1. Structural and anchor calculations, dated 01/13/25, prepared, signed and sealed by Robert V. Nangia, P.E.

D. QUALITY ASSURANCE

1. Miami-Dade Department of Regulatory and Economic Resources (RER)

E. MATERIAL CERTIFICATIONS

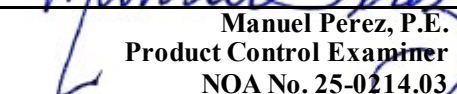
1. None.

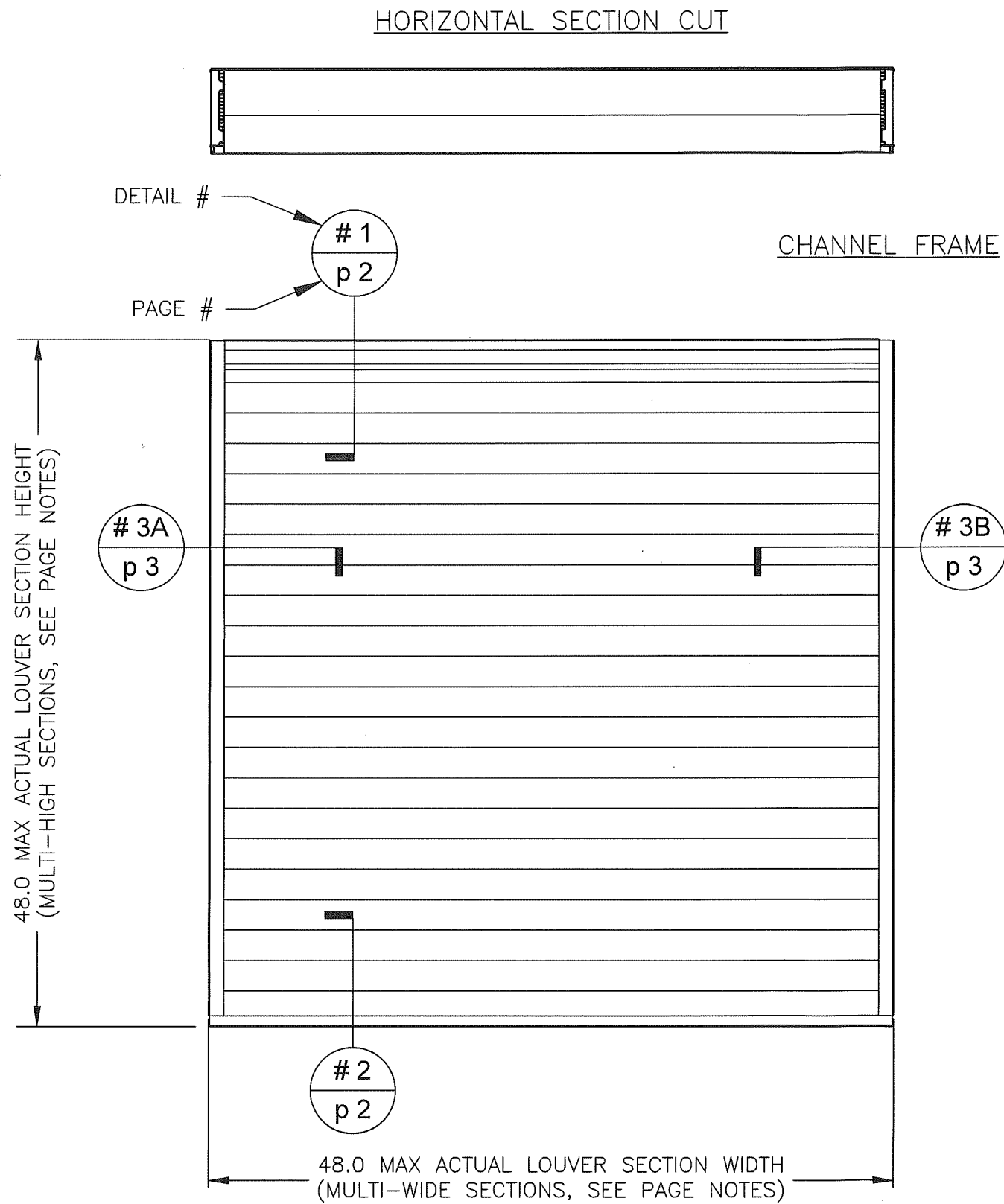
F. STATEMENTS

1. Statement letter of code conformance to the **FBC 6th Edition (2017)**, to the **FBC 7th Edition (2020)**, to the **FBC 8th Edition (2023)** and no financial interest, dated 01/28/25, issued by manufacturer, signed and sealed by Robert V. Nangia, P.E.

G. OTHERS

1. Notice of Acceptance No. **20-0929.06**, issued to Greenheck Fan Corporation for their Model EHH-601DE Aluminum Louver, approved on 12/10/20 and expiring on 12/24/25.


Manuel Perez, P.E.
Product Control Examiner
NOA No. 25-0214.03
Expiration Date: December 14, 2030
Approval Date: March 13, 2025



MODEL NAME EQUIVALENTS			DRAWN BY	DATE	SHEET NO.	1 OF 17	CAD DRAWING NO. EHH-601DE
BRAND	GREENHECK	AIROLITE					
MODEL	EHH-601DE	SCH601MDE	STEEL	9/30/15	1:5		
DESIGN PRESSURE	+/- 150 PSF						

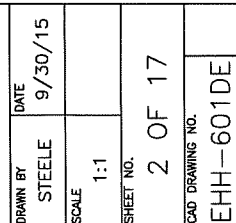
GREENHECK
P.O. BOX 410 SCHOFIELD,
WISCONSIN 54476-0410

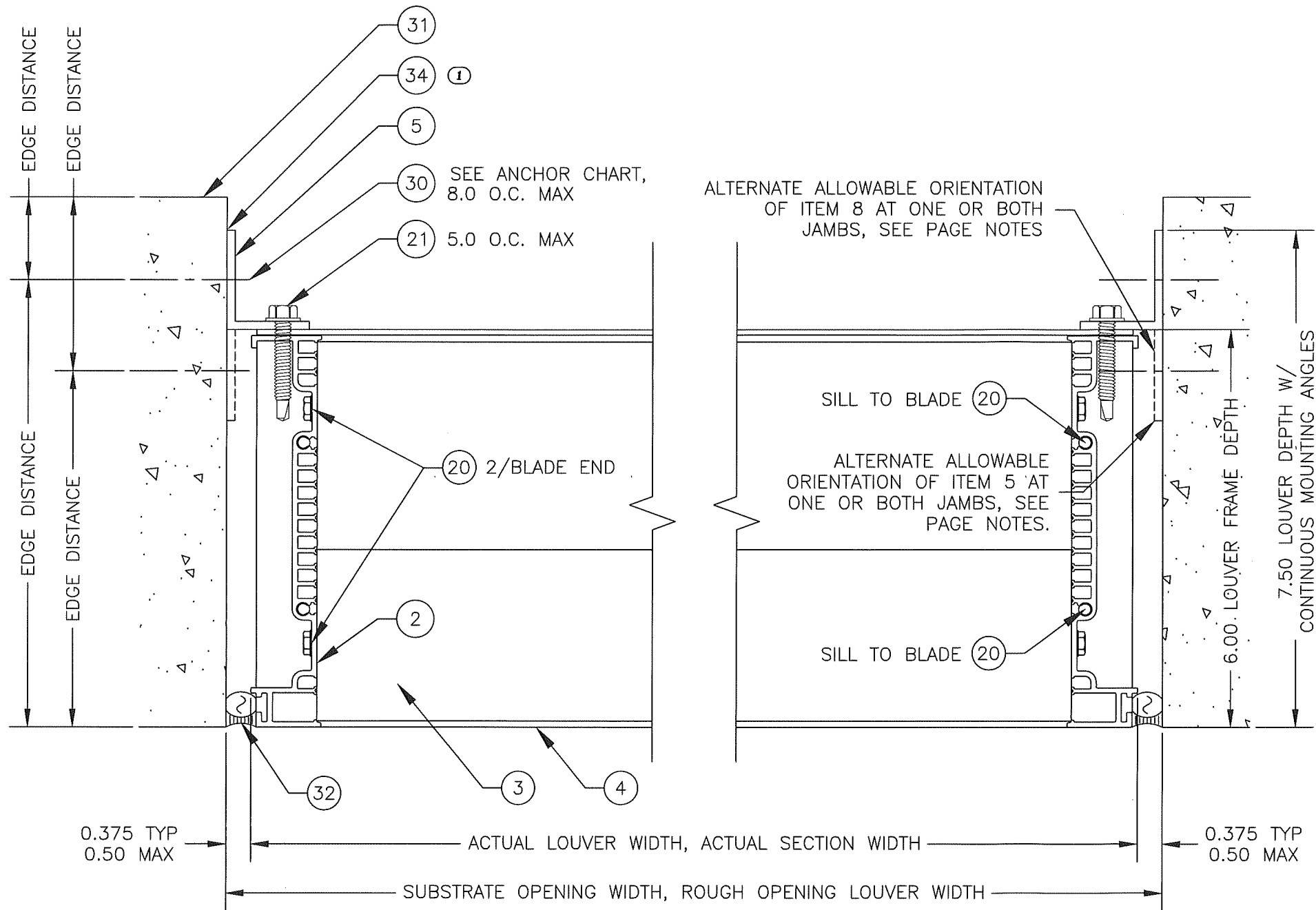
PRODUCT REVISED
As complying with the Florida
Building Code
NOA-No. **25-0214.03**
Expiration Date: **12/14/2030**
By: *Manuel Perez*
Miami-Dade Product Control

STRUCTURAL ONLY
ROBERT V. NANGIA
LICENSE
No. 69555
STATE OF FLORIDA
PROFESSIONAL ENGINEER
2025

PAGE NOTES:
• MULTI-WIDE AND/OR MULTI-HIGH ASSEMBLIES ARE PERMITTED AS-LONG-AS EACH LOUVER SECTION'S WIDTH/HEIGHT ARE WITHIN THE ALLOWABLE MAXIMUMS AND SUITABLE SUBSTRATE SURROUNDS EACH LOUVER SECTION'S PERIMETER AND EACH LOUVER SECTION IS INSTALLED PER DETAILS HEREIN.

TITLE:
EHH-601DE
CHANNEL FRAME ELEVATION

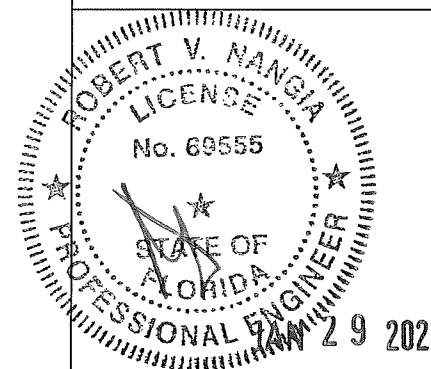




3A 3
DET. PAGE
JAMB,
CHANNEL FRAME

3B 3
DET. PAGE
JAMB, OPPOSITE,
CHANNEL FRAME

PRODUCT REVISED
As complying with the Florida
Building Code
NOA-No. **25-0214.03**
Expiration Date: **12/14/2030**
By: *Manuel Perez*
Miami-Dade Product Control



NOTES:
• TO ALLOW FOR SUBSTRATE ANCHOR HEAD CLEARANCE, STANDARD LOUVER WIDTH DOWN SIZING IS 0.375 PER END (0.75 OVERALL TOTAL) WHEN ORDERED BASED ON ROUGH OPENING SIZING. THERE IS NO NEED FOR ADDITIONAL DOWN SIZING AT THE JAMBS WHEN USING THE ALTERNATE ANCHOR ORIENTATION.

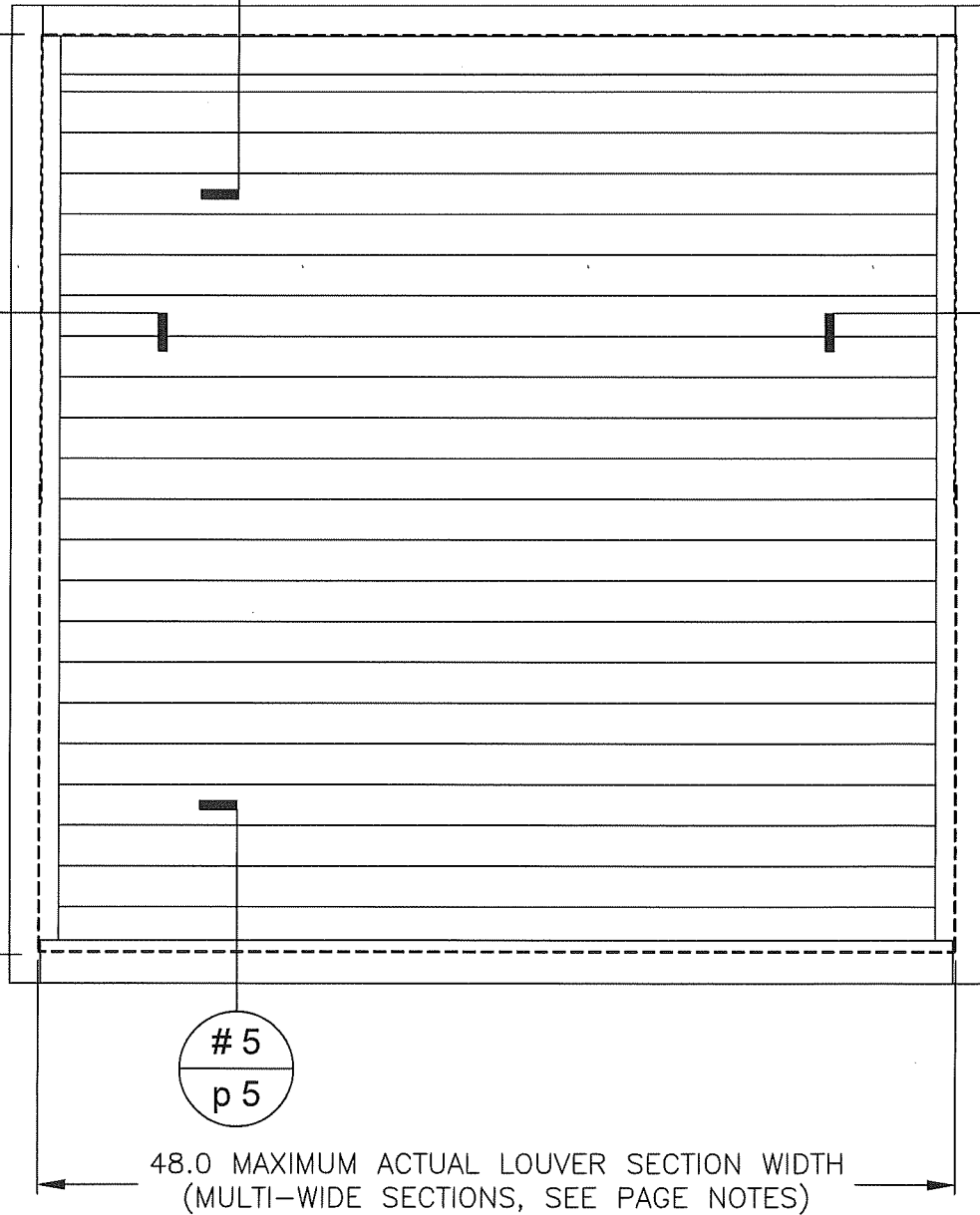


EHH-601DE
CHANNEL FRAME DETAILS

DRAWN BY: STEELE
SCALE: 1:1
SHEET NO.: 3 OF 17
CAD DRAWING NO.: EHH-601DE

48.0 MAXIMUM ACTUAL LOUVER SECTION HEIGHT
(MULTI-HIGH SECTIONS, SEE PAGE NOTES)

6A
p 6



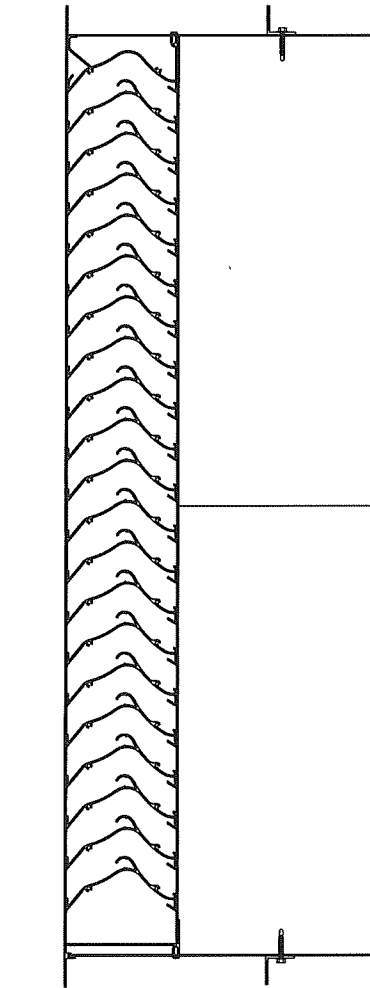
48.0 MAXIMUM ACTUAL LOUVER SECTION WIDTH
(MULTI-WIDE SECTIONS, SEE PAGE NOTES)

4
p 5

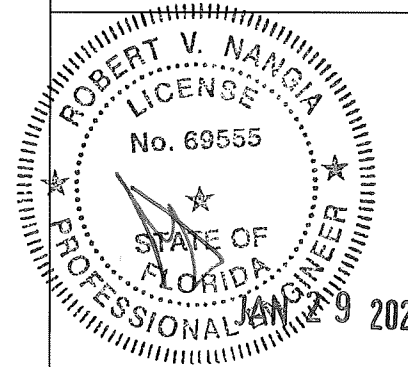
HORIZONTAL SECTION CUT

SLEEVE FRAME

6B
p 6



VERTICAL SECTION CUT



PRODUCT REVISED
As complying with the Florida
Building Code
NOA-No. **25-0214.03**
Expiration Date: **12/14/2030**
By: *Manuel Perez*
Miami-Dade Product Control

PAGE NOTES:
• MULTI-WIDE AND/OR MULTI-HIGH ASSEMBLIES ARE PERMITTED AS-LONG-AS EACH LOUVER SECTION'S WIDTH/HEIGHT ARE WITHIN THE ALLOWABLE MAXIMUMS AND SUITABLE SUBSTRATE SURROUNDS EACH LOUVER SECTION'S PERIMETER AND EACH LOUVER SECTION IS INSTALLED PER DETAILS HEREIN.

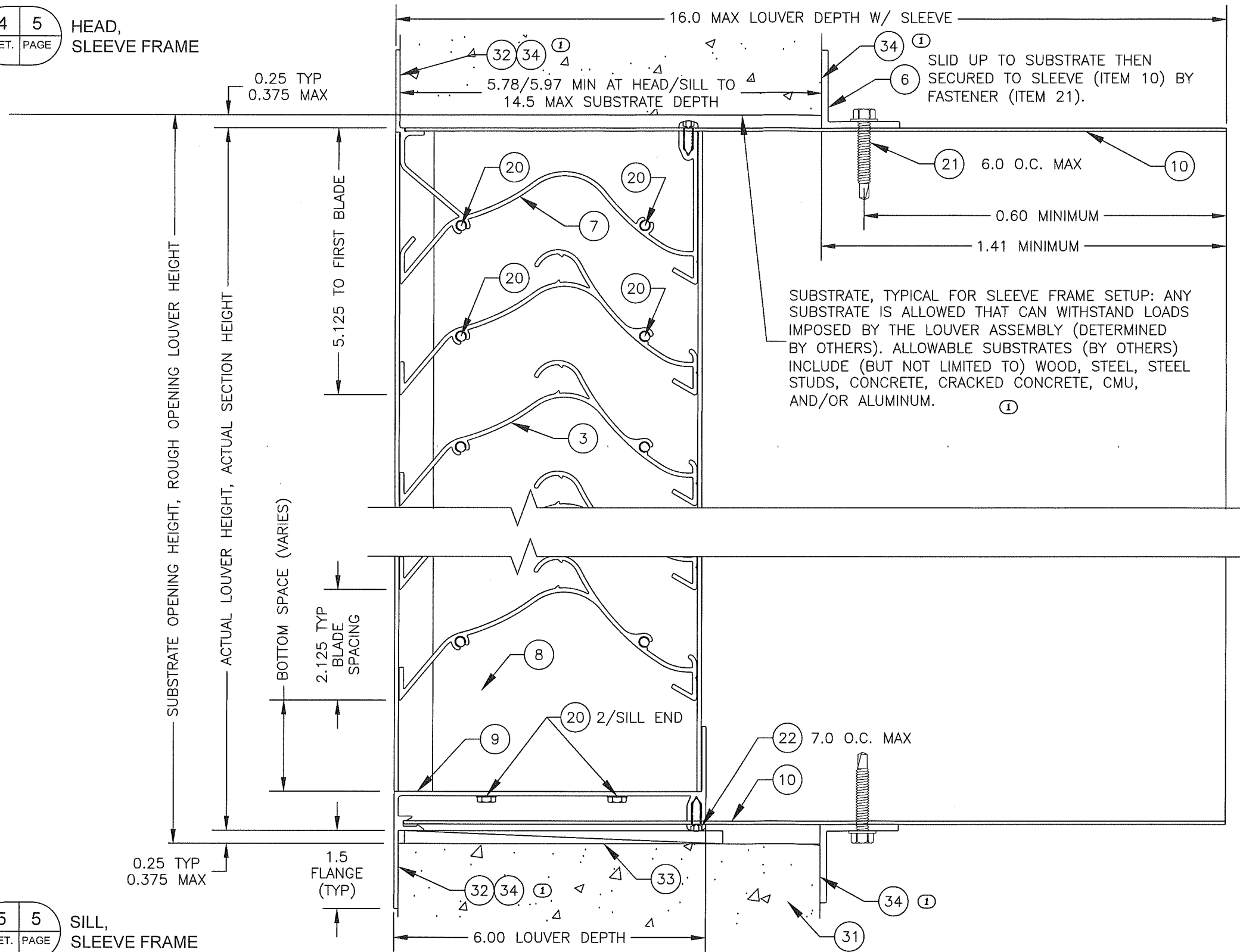
 **GREENHECK**
P.O. BOX 410 SCHOFIELD,
WISCONSIN 54476-0410

DRAWN BY	STEEL	DATE	9/30/15
SCALE	1:5		
SHEET NO.	4 OF 17		
CAD DRAWING NO.	EHH-601DE		

EHH-601DE
SLEEVE FRAME ELEVATION

4 5
DET. PAGE

HEAD,
SLEEVE FRAME



5 5
DET. PAGE

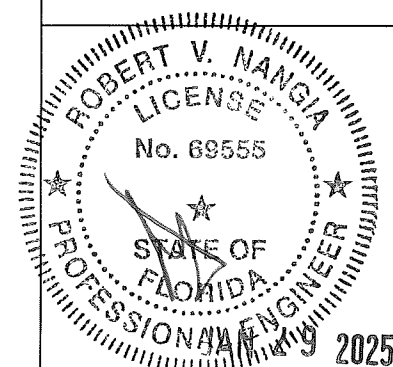
SILL,
SLEEVE FRAME

DATE	9/30/15
DRAWN BY	STEEL
SCALE	1:1
SHEET NO.	5 OF 17
CAD DRAWING NO.	EHH-601DE

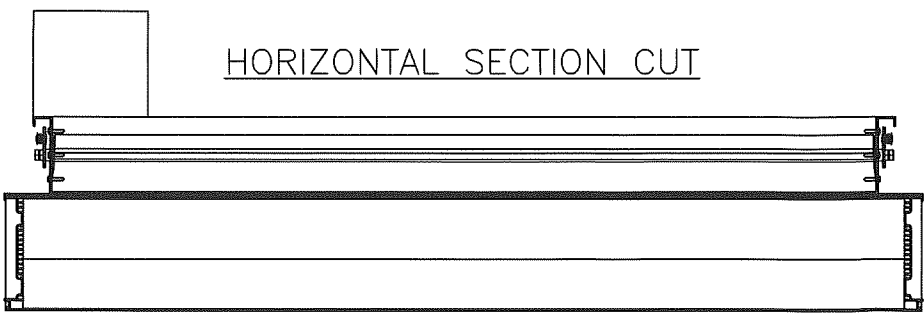
GREENHECK
P.O. BOX 410 SCHOFIELD,
WISCONSIN 54476-0410

EHH-601DE
SLEEVE FRAME DETAILS

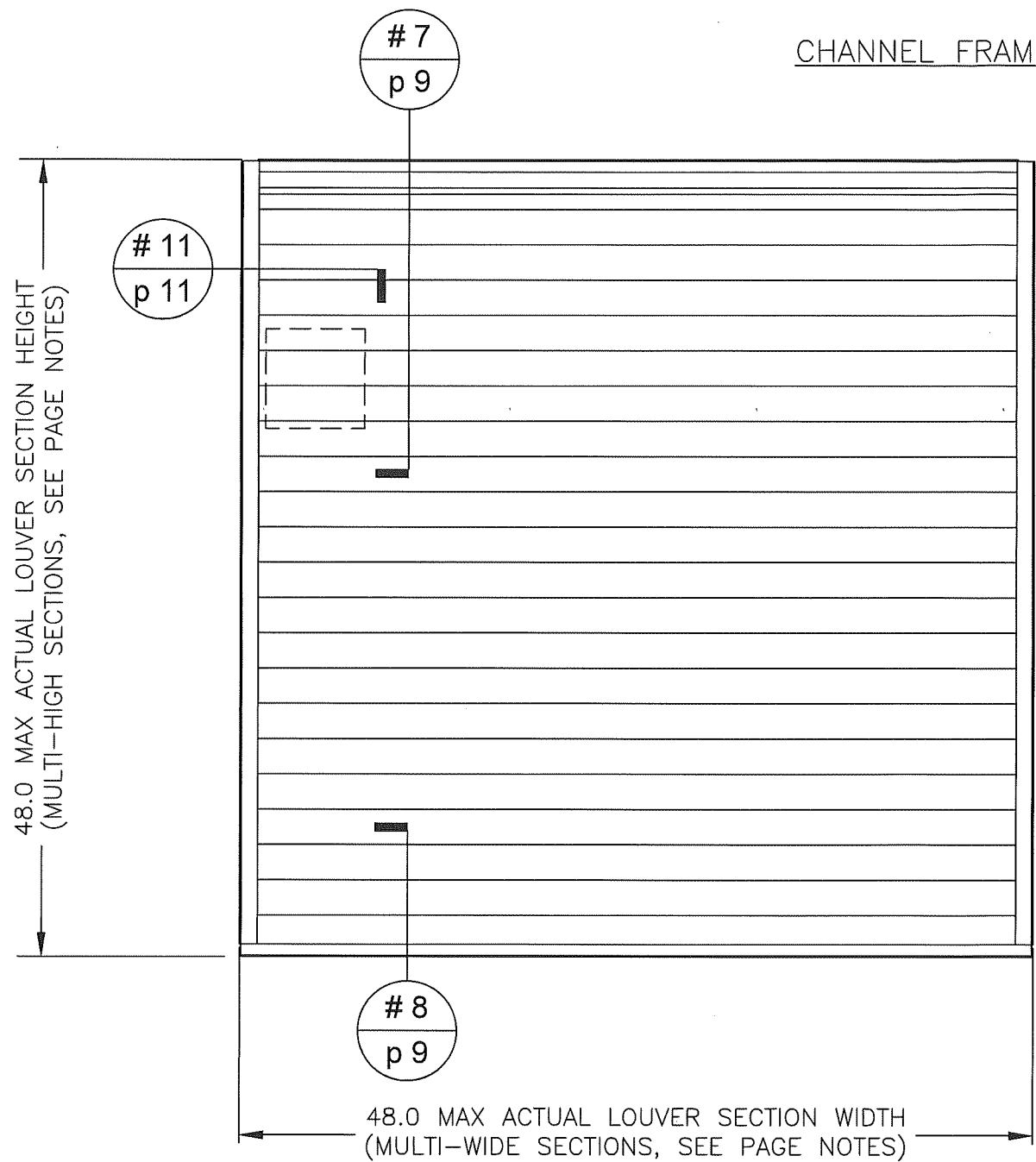
PRODUCT REVISED
As complying with the Florida
Building Code
NOA-No. **25-0214.03**
Expiration Date: **12/14/2030**
By: *Manuel Perez*
Miami-Dade Product Control



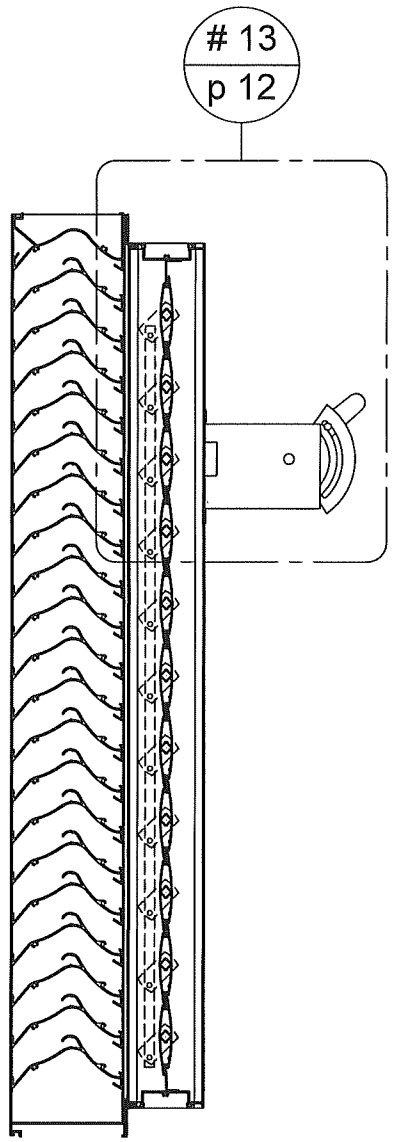
PAGE NOTES:
• STANDARD LOUVER HEIGHT DOWNSIZING IS 0.25 PER END (0.50 OVERALL TOTAL) WHEN ORDERED BASED ON ROUGH OPENING SIZING.



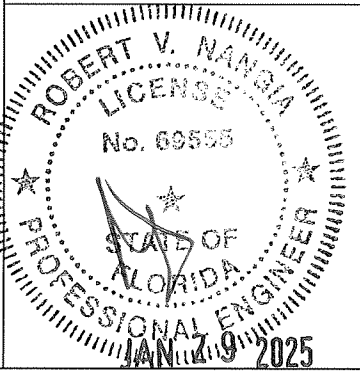
HORIZONTAL SECTION CUT



CHANNEL FRAME W/ DAMPER



VERTICAL SECTION CUT



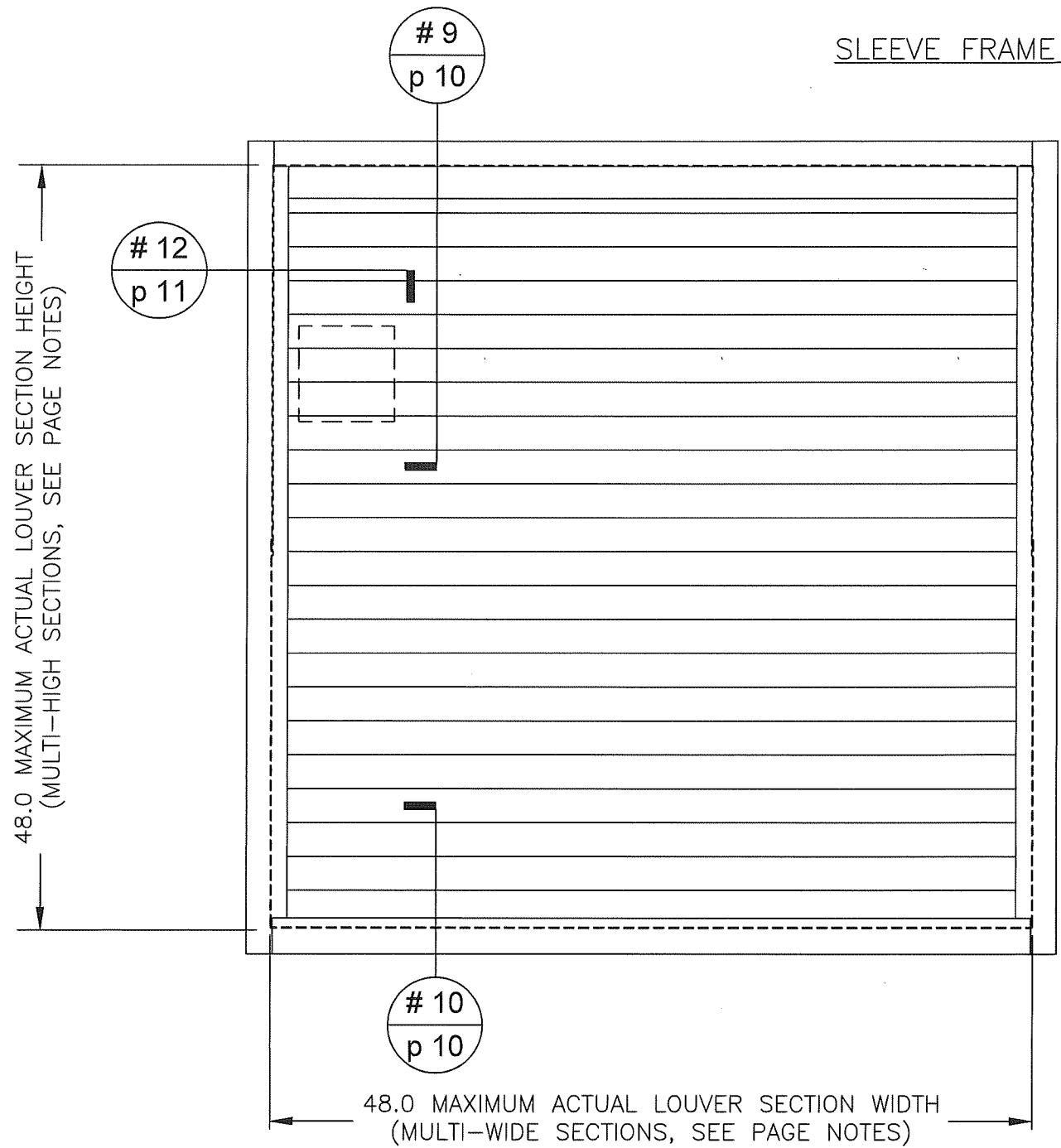
PRODUCT REVISED
As complying with the Florida Building Code
NOA-No. **25-0214.03**
Expiration Date: **12/14/2030**
By: *Manuel Perez*
Miami-Dade Product Control

PAGE NOTES:
• MULTI-WIDE AND/OR MULTI-HIGH ASSEMBLIES ARE PERMITTED AS-LONG-AS EACH LOUVER SECTION'S WIDTH/HEIGHT ARE WITHIN THE ALLOWABLE MAXIMUMS AND SUITABLE SUBSTRATE SURROUNDS EACH LOUVER SECTION'S PERIMETER AND EACH LOUVER SECTION IS INSTALLED PER DETAILS HEREIN.

GREENHECK
P.O. BOX 410 SCHOFIELD, WISCONSIN 54476-0410

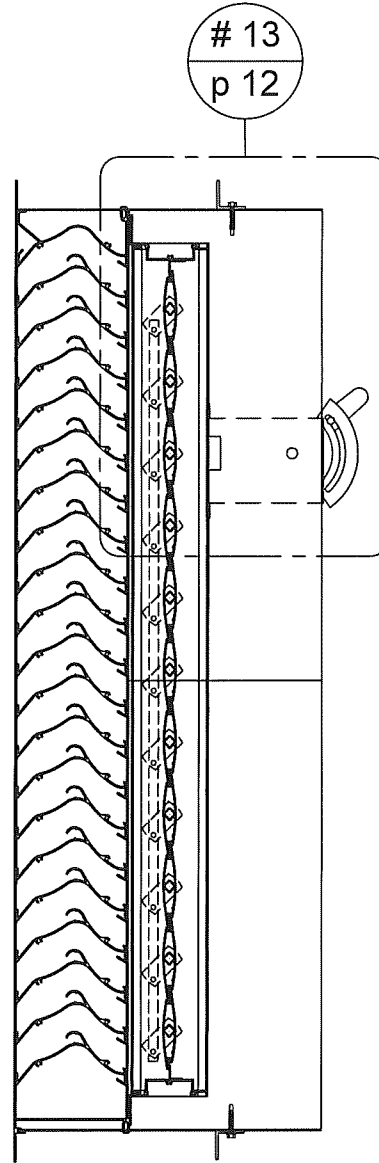
TITLE:
EHH-601DE W/ VCD-40 DAMPER
CHANNEL FRAME ELEVATION

DRAWN BY	STEELE	DATE	9/30/15
SCALE	1:5		
SHEET NO.	7 OF 17		
CAD DRAWING NO.	EHH-601DE		



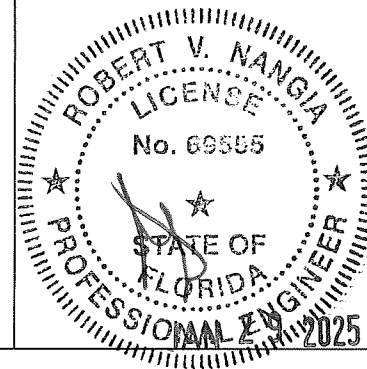
HORIZONTAL SECTION CUT

SLEEVE FRAME W/ DAMPER



VERTICAL SECTION CUT

PRODUCT REVISED
 As complying with the Florida
 Building Code
 NOA-No. **25-0214.03**
 Expiration Date: **12/14/2030**
 By: *Manuel Perez*
 Miami-Dade Product Control



PAGE NOTES:
 • MULTI-WIDE AND/OR MULTI-HIGH ASSEMBLIES ARE PERMITTED AS-LONG-AS EACH LOUVER SECTION'S WIDTH/HEIGHT ARE WITHIN THE ALLOWABLE MAXIMUMS AND SUITABLE SUBSTRATE SURROUNDS EACH LOUVER SECTION'S PERIMETER AND EACH LOUVER SECTION IS INSTALLED PER DETAILS HEREIN.

GREENHECK
 P.O. BOX 410 SCHOFIELD,
 WISCONSIN 54476-0410

TITLE:
 EHH-601DE W/ VCD-40 DAMPER
 SLEEVE FRAME ELEVATION

DRAWN BY	STEEL	DATE	9/30/15
SCALE	1:5		
SHEET NO.	8	OF	17
CAD DRAWING NO.	EHH-601DE		

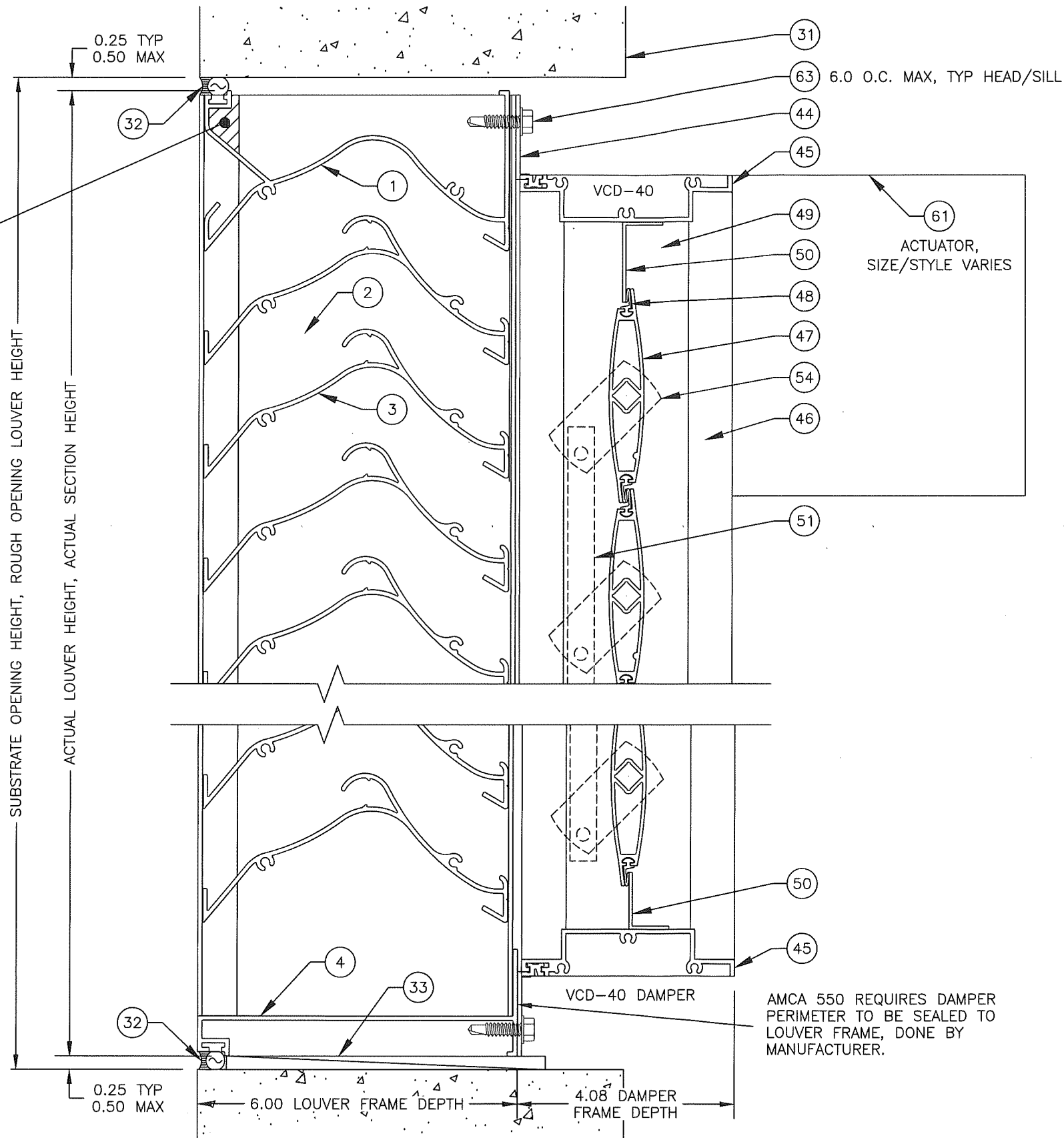
7 9
DET. PAGE

DAMPER HEAD,
CHANNEL FRAME

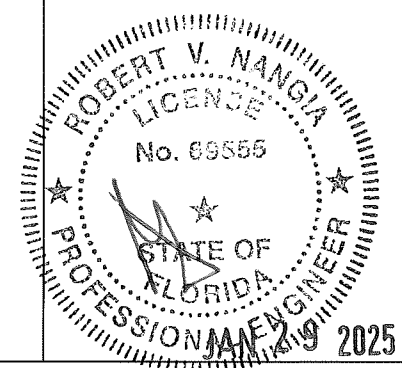
AMCA 550 REQUIRES
JAMB DRAIN ABOVE
HEAD TO BE SEALED,
DONE BY
MANUFACTURER.

8 9
DET. PAGE

DAMPER SILL,
CHANNEL FRAME



PRODUCT REVISED
As complying with the Florida
Building Code
NOA-No. **25-0214.03**
Expiration Date: **12/14/2030**
By: *Manuel Perez*
Miami-Dade Product Control



PAGE NOTES:

- STANDARD LOUVER HEIGHT DOWNSIZING IS 0.25 PER END (0.50 OVERALL TOTAL) WHEN ORDERED BASED ON ROUGH OPENING SIZING.

GREENHECK
P.O. BOX 410 SCHOFIELD,
WISCONSIN 54476-0410

TITLE:
EHH-601DE W/ VCD-40 DAMPER
CHANNEL FRAME DETAILS

DRAWN BY: STEELE
SCALE: 1:1
DATE: 9/30/15
SHEET NO.: 9 OF 17
CAD DRAWING NO.: EHH-601DE

9 10
DET. PAGE

DAMPER HEAD,
SLEEVE FRAME

AMCA 550 REQUIRES
JAMB DRAIN ABOVE
HEAD TO BE SEALED
CLOSED, DONE BY
MANUFACTURER.

10 10
DET. PAGE

DAMPER SILL,
SLEEVE FRAME

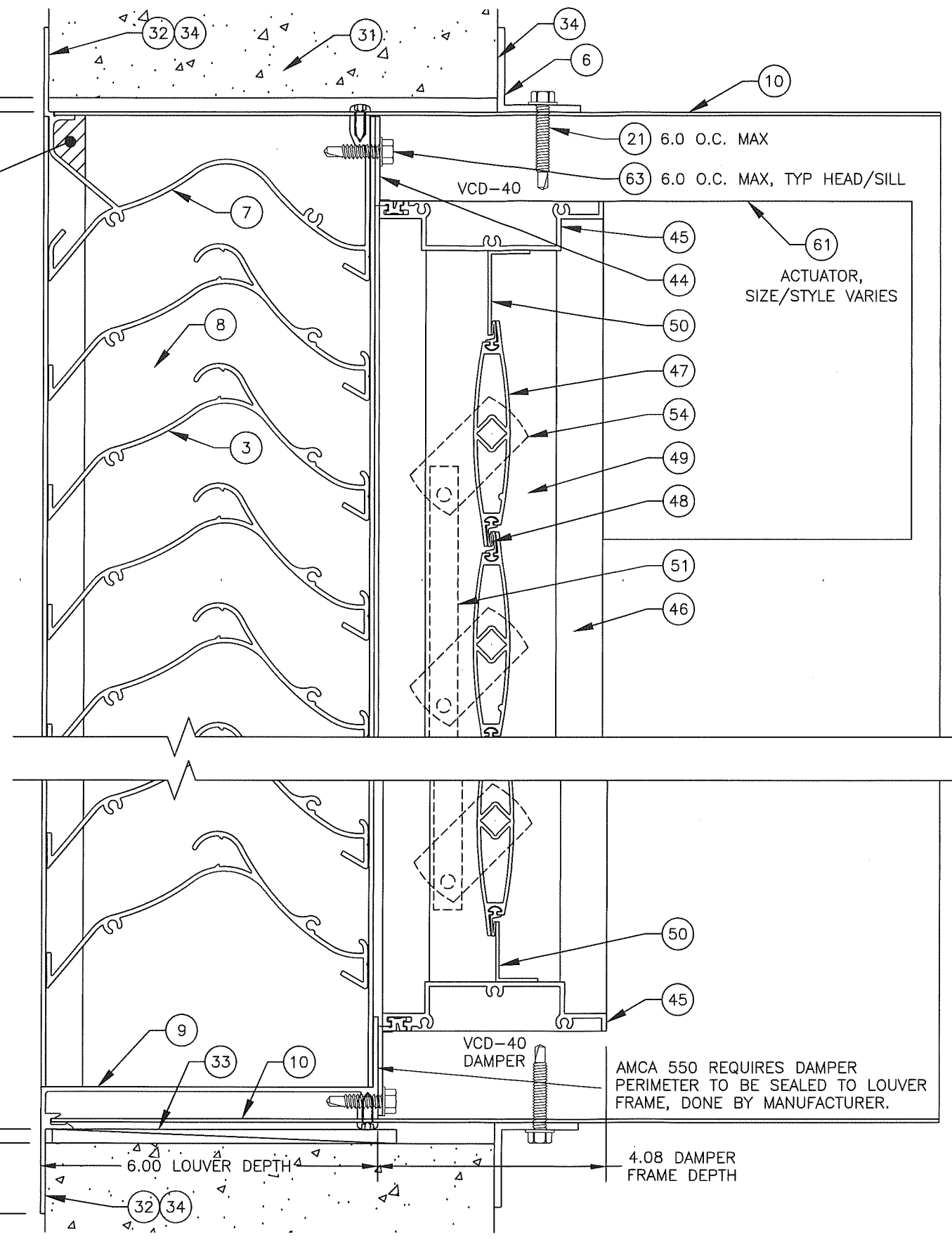
0.25 TYP
0.375 MAX

1.50
FLANGE
(TYP)

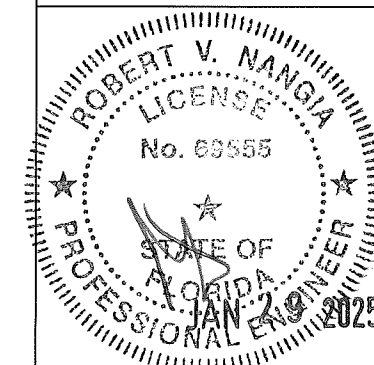
0.25 TYP
0.375 MAX

SUBSTRATE OPENING HEIGHT, ROUGH OPENING LOUVER HEIGHT

ACTUAL LOUVER HEIGHT, ACTUAL SECTION HEIGHT



PRODUCT REVISED
As complying with the Florida
Building Code
NOA-No. **25-0214.03**
Expiration Date: **12/14/2030**
By: *Manuel Perez*
Miami-Dade Product Control

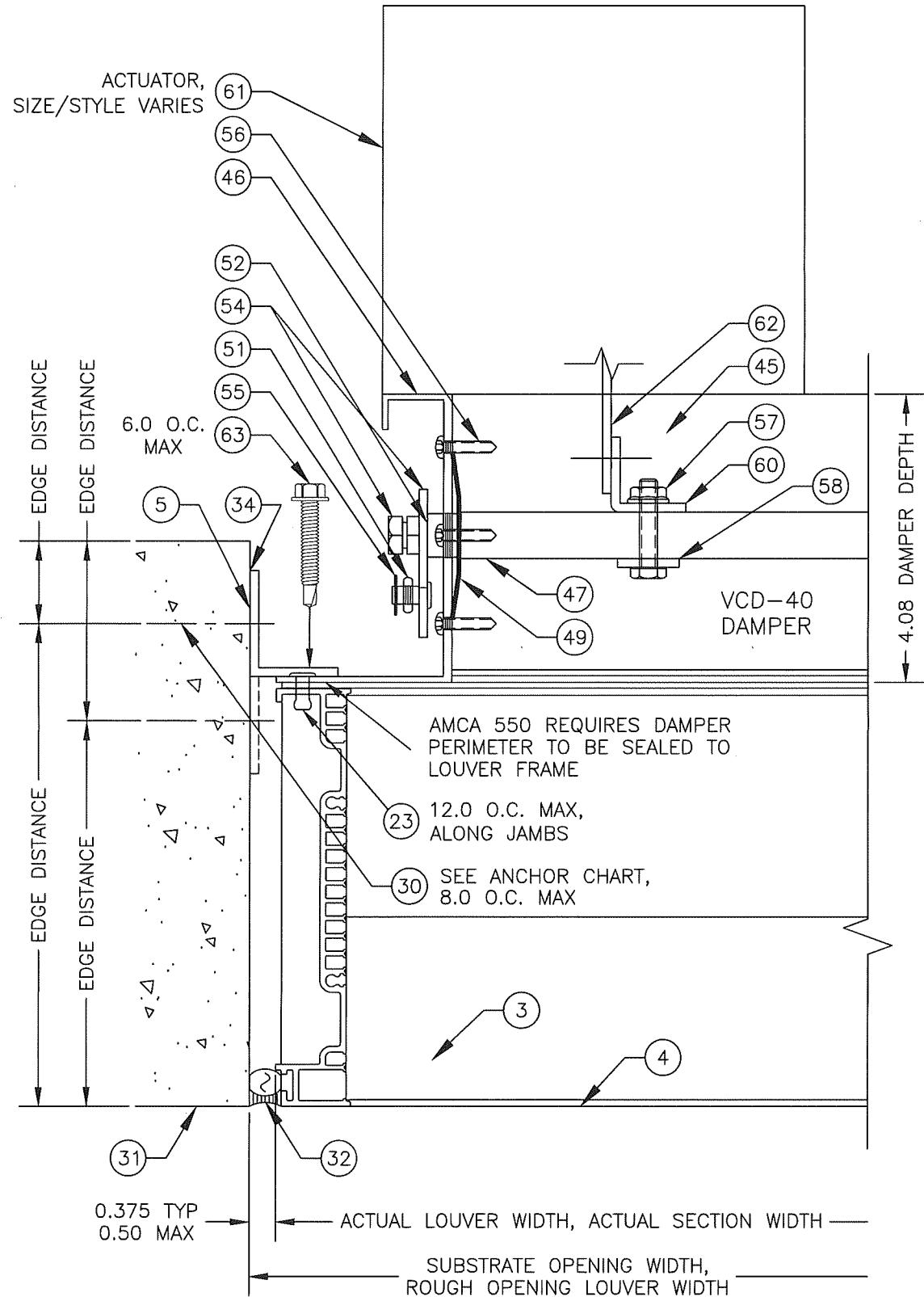


PAGE NOTES:
• STANDARD LOUVER HEIGHT DOWNSIZING IS 0.25 PER END (0.50 OVERALL TOTAL) WHEN ORDERED BASED ON ROUGH OPENING SIZING.

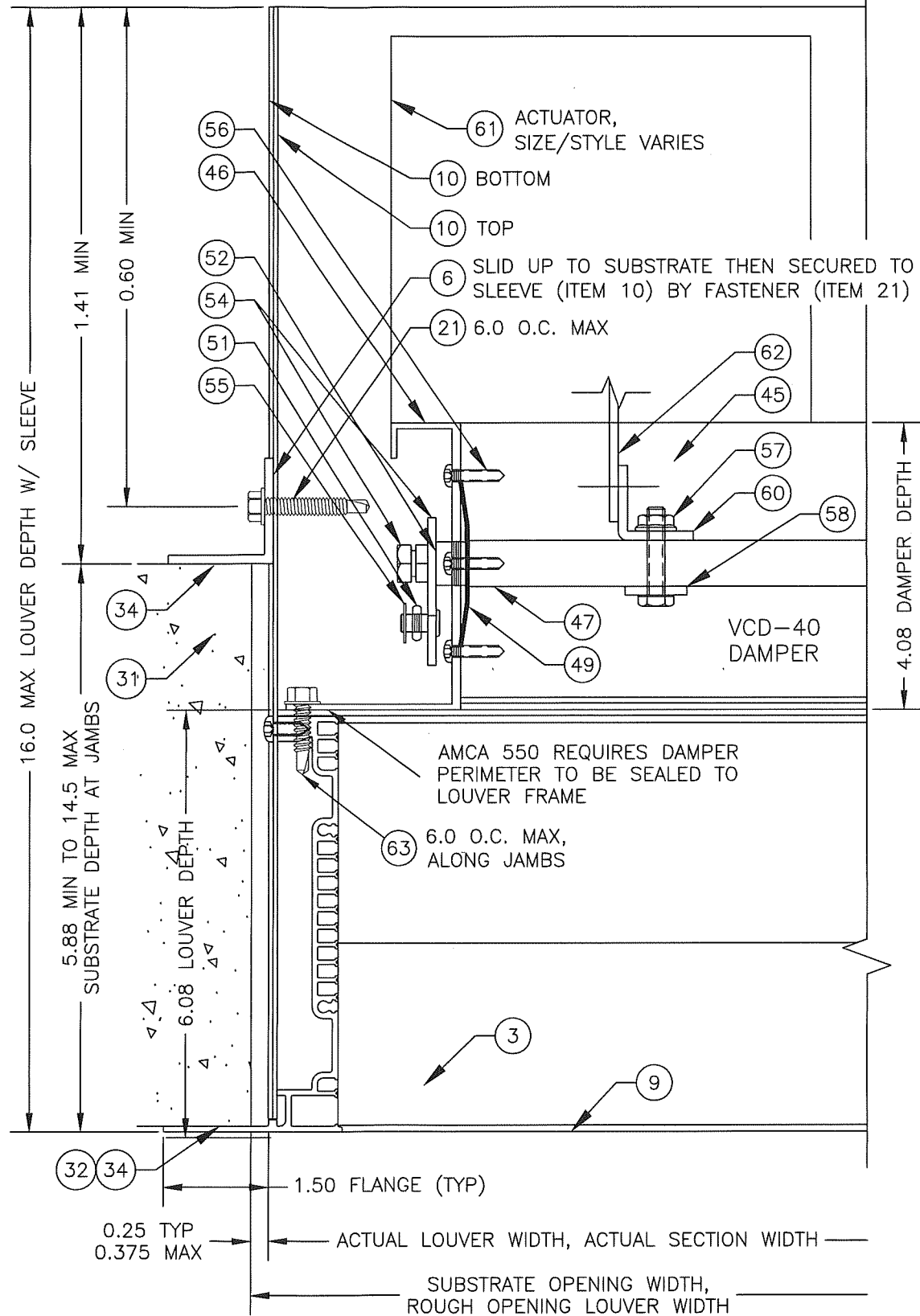
GREENHECK
P.O. BOX 410 SCHOFIELD,
WISCONSIN 54476-0410

TITLE:
EHH-601DE W/ VCD-40 DAMPER
SLEEVE FRAME DETAILS

DRAWN BY: STEELE
SCALE: 1:1
DATE: 9/30/15
SHEET NO.: 10 OF 17
CAD DRAWING NO.: EHH-601DE

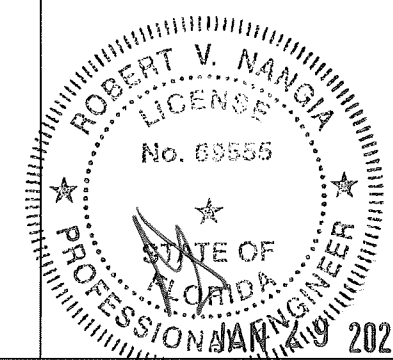


11 11
DET. PAGE
DAMPER JAMB,
CHANNEL FRAME



12 11
DET. PAGE
DAMPER JAMB,
SLEEVE FRAME

PRODUCT REVISED
As complying with the Florida
Building Code
NOA-No. **25-0214.03**
Expiration Date: **12/14/2030**
By: *Manuel Perez*
Miami-Dade Product Control

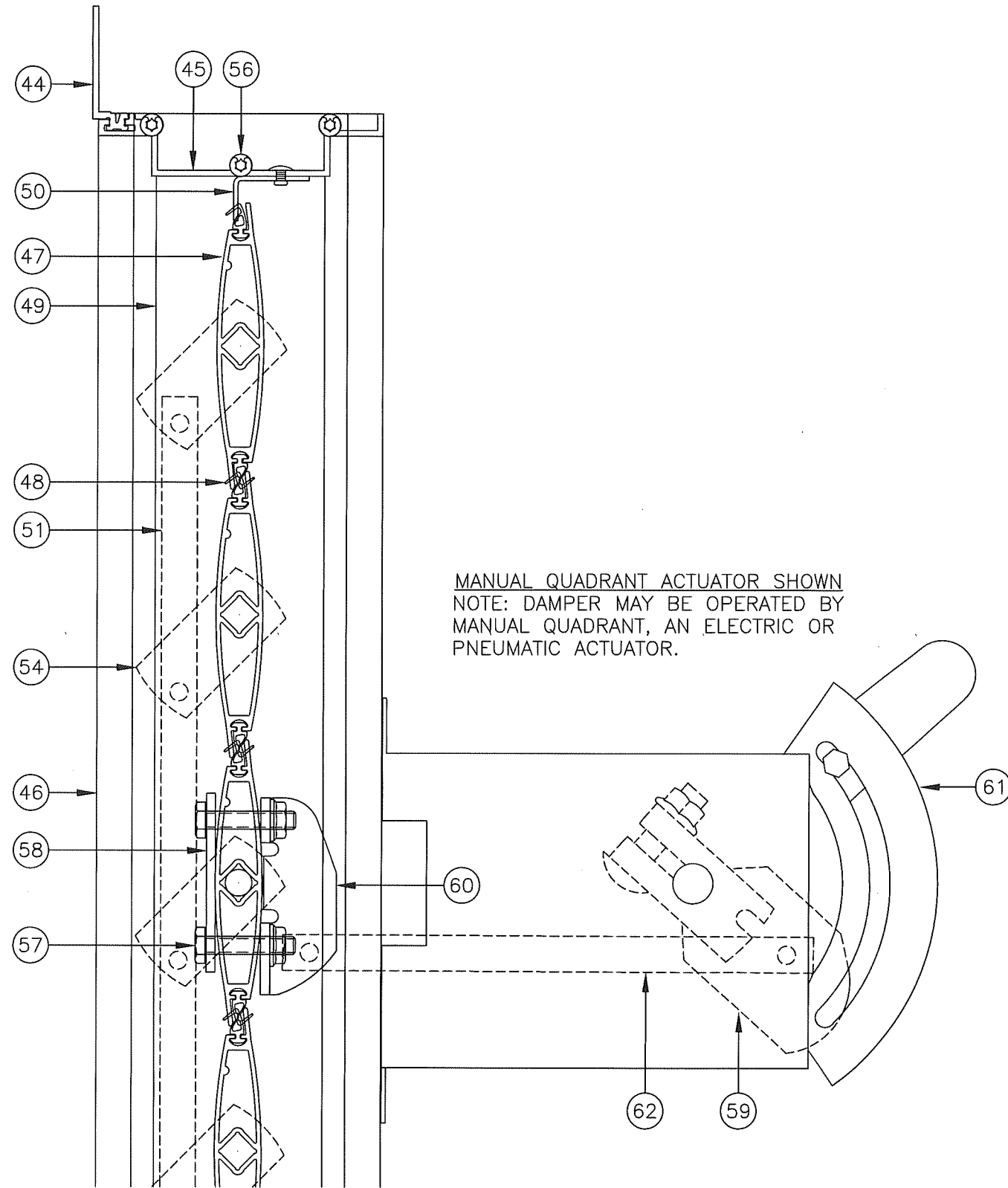


PAGE NOTES:
• CHANNEL FRAME: TO ALLOW FOR SUBSTRATE ANCHOR HEAD CLEARANCE, STANDARD LOUVER WIDTH DOWNSIZING IS 0.375 PER END (0.75 OVERALL TOTAL) WHEN ORDERED BASED ON ROUGH OPENING SIZING. THERE IS NO NEED FOR ADDITIONAL DOWNSIZING AT THE JAMBS WHEN USING THE ALTERNATE ANCHOR ORIENTATION.
• SLEEVE FRAME: STANDARD LOUVER WIDTH DOWNSIZING IS 0.25 PER END (0.50 OVERALL TOTAL) WHEN ORDERED BASED ON ROUGH OPENING SIZING.

GREENHECK
P.O. BOX 410 SCHOFIELD,
WISCONSIN 54476-0410

TITLE:
EHH-601DE W/ VCD-40 DAMPER
CHANNEL & SLEEVE FRAME DETAILS

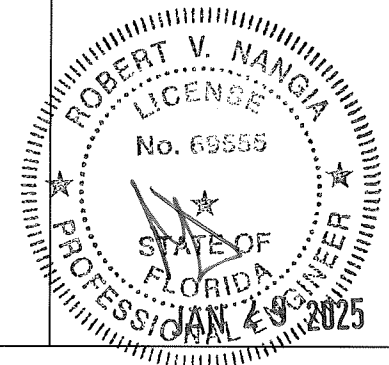
DRAWN BY: STEELE
SCALE: 1:1
DATE: 9/30/15
SHEET NO.: 11 OF 17
CAD DRAWING NO.: EHH-601DE



13	12
DET.	PAGE

VCD-40 DAMPER & ACTUATOR,
CHANNEL & SLEEVE FRAME

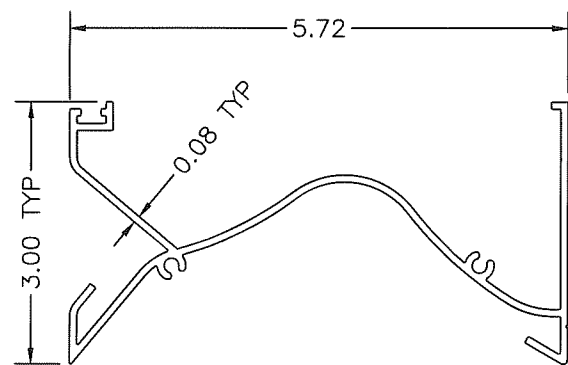
REV 01: 12/11/24, ADDED THIS NEW PAGE TO SHOW DAMPER.



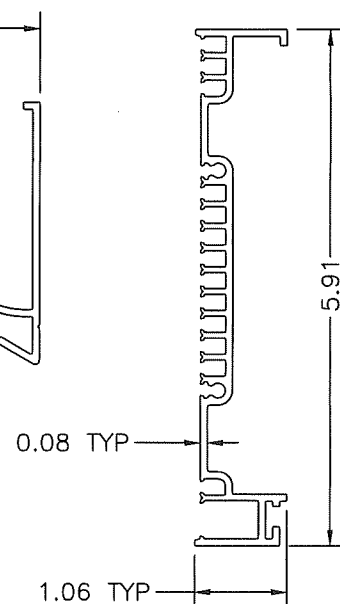
PRODUCT REVISED
As complying with the Florida
Building Code
NOA-No. **25-0214.03**
Expiration Date: **12/14/2030**
By: *Manuel Perez*
Miami-Dade Product Control

DRAWN BY STEELE	DATE 9/30/15	SHEET NO. 12 OF 17	CSD DRAWING NO. EHH-601DE
	SCALE 1:1.1		
	TITLE VCD-40 DAMPER CHANNEL & SLEEVE FRAME DETAIL		

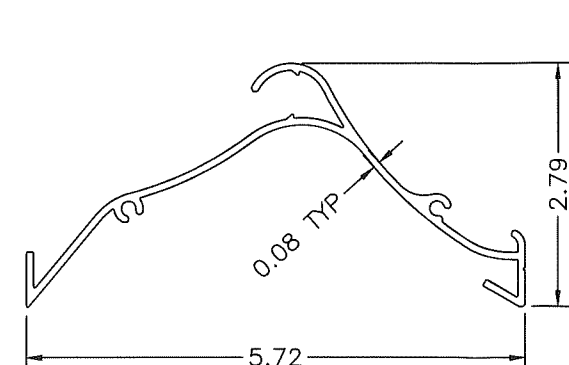
GREENHECK
P.O. BOX 410 SCHOFIELD,
WISCONSIN 54476-0410



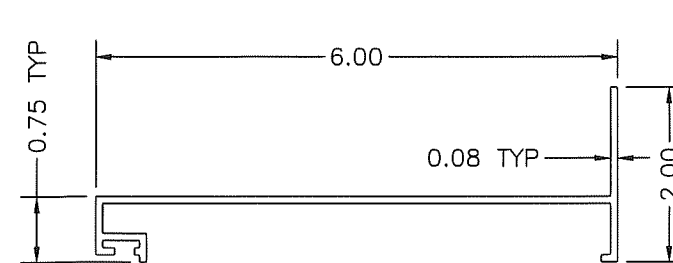
① HEAD (CHANNEL FRAME)
6063-T5 ALUMINUM



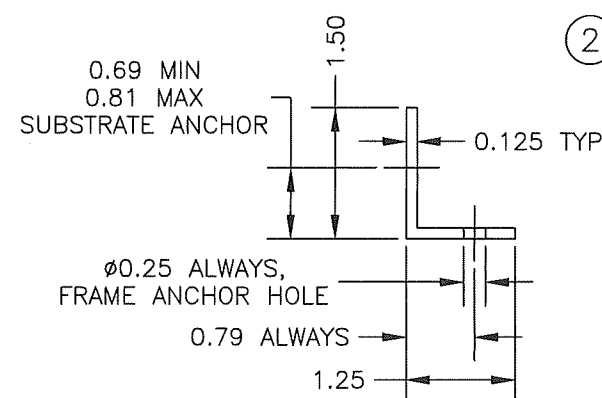
② JAMB (CHANNEL FRAME)
6063-T5 ALUMINUM



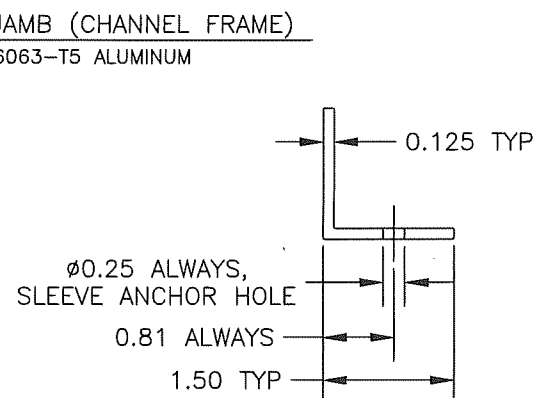
③ BLADE (CHANNEL & SLEEVE FRAMES)
6063-T5 ALUMINUM



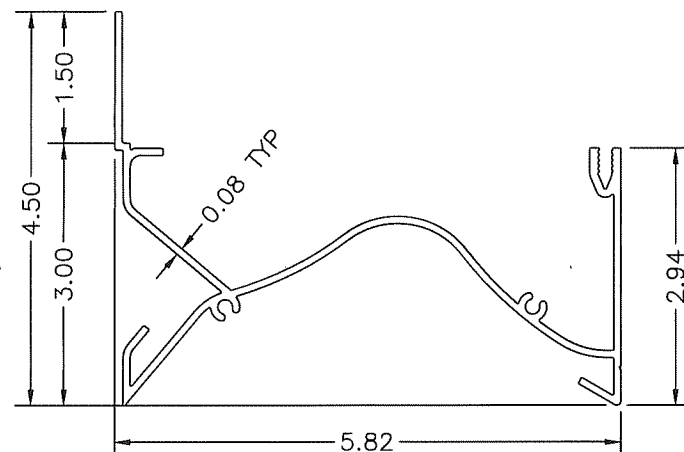
④ SILL (CHANNEL FRAME)
6063-T5 ALUMINUM



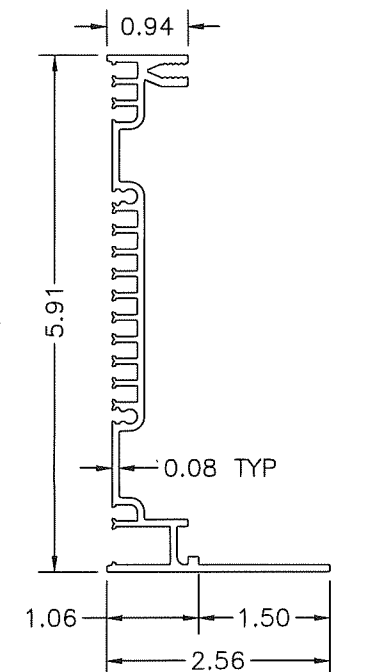
⑤ MOUNTING ANGLE (CHANNEL FRAME)
6061-T6 ALUMINUM



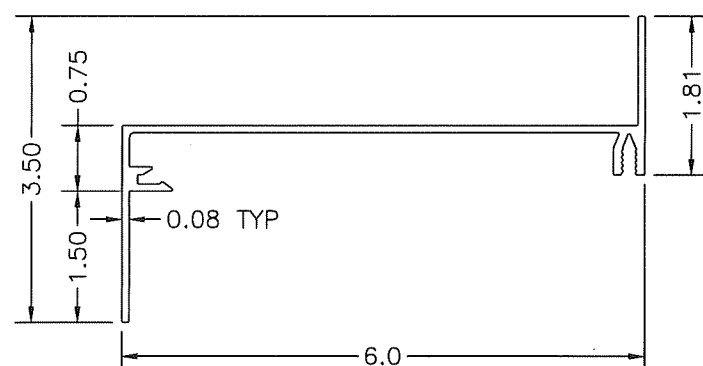
⑥ MOUNTING ANGLE (SLEEVE FRAME)
6063-T5 ALUMINUM



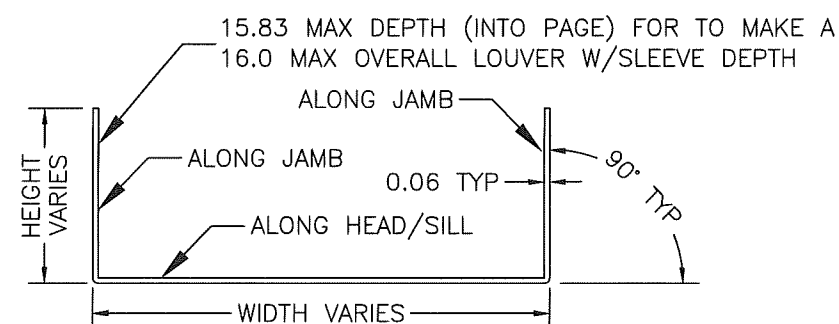
⑦ HEAD (SLEEVE FRAME)
6005-T5 ALUMINUM



⑧ JAMB (SLEEVE FRAME)
6005-T5 ALUMINUM

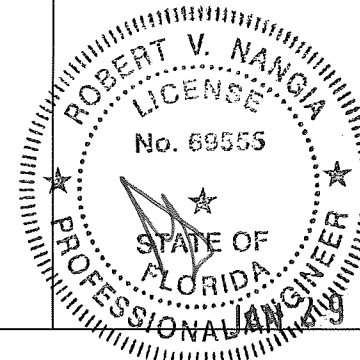


⑨ SILL (SLEEVE FRAME)
6005-T5 ALUMINUM



⑩ FORMED SLEEVE (SLEEVE FRAME)
5052-H32 ALUMINUM

PRODUCT REVISED
As complying with the Florida
Building Code
NOA-No. **25-0214.03**
Expiration Date: **12/14/2030**
By: *Manuel Perez*
Miami-Dade Product Control

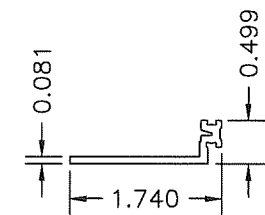


ALL SHEET METAL PARTS ARE SHOWN AT ACTUAL THICKNESS

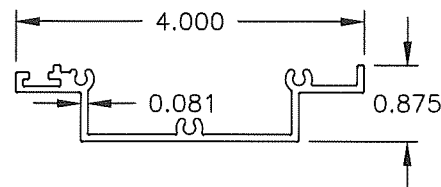
GREENHECK
P.O. BOX 410 SCHOFIELD,
WISCONSIN 54476-0410

EHH-601DE
PART DETAILS

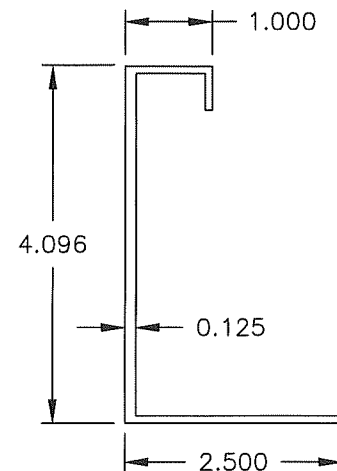
DRAWN BY: STEELE
SCALE: 1:1
DATE: 9/30/15
SHEET NO.: 13 OF 17
CAD DRAWING NO.: EHH-601DE



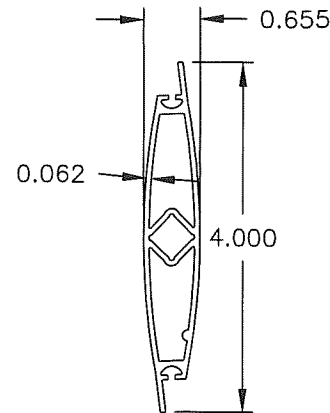
44 DAMPER FLANGE
6063-T5 ALUMINUM



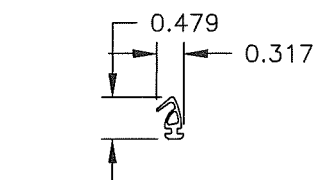
45 DAMPER HEAD/SILL
6063-T5 ALUMINUM



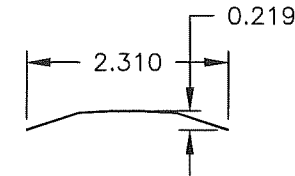
46 DAMPER JAMB
6063-T5 ALUMINUM



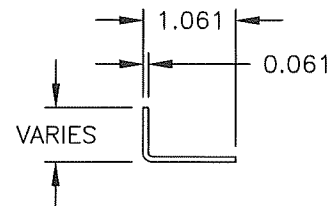
47 DAMPER BLADE
6063-T5 ALUMINUM



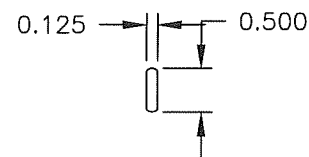
48 DAMPER BLADE SEAL
MATERIAL VARIES



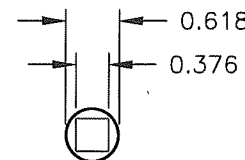
49 DAMPER JAMB SEAL
0.007 SS



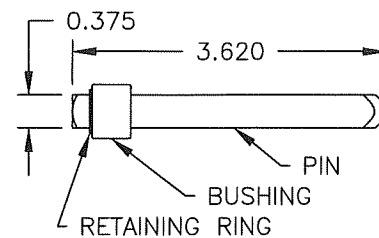
50 DAMPER TOP/BOTTOM CLOSURE
ALUMINUM



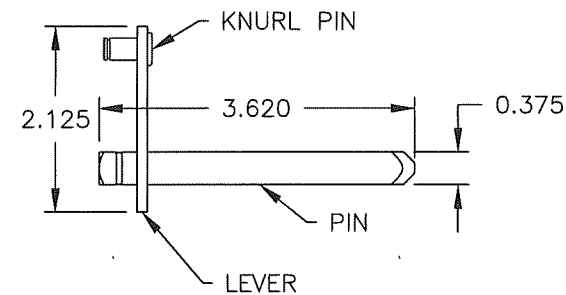
51 DAMPER LINKAGE BAR
MATERIAL VARIES



52 DAMPER AXLE BUSHING 0.45 LONG
MATERIAL VARIES

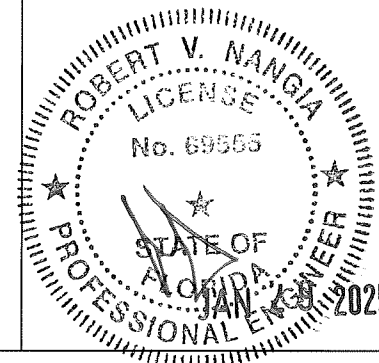


53 DAMPER AXLE ASSEMBLY, NON-DRIVE SIDE
MATERIAL VARIES



54 DAMPER AXLE ASSEMBLY, DRIVE SIDE
MATERIAL VARIES

PRODUCT REVISED
As complying with the Florida
Building Code
NOA-No. **25-0214.03**
Expiration Date: **12/14/2030**
By: *Manuel Perez*
Miami-Dade Product Control

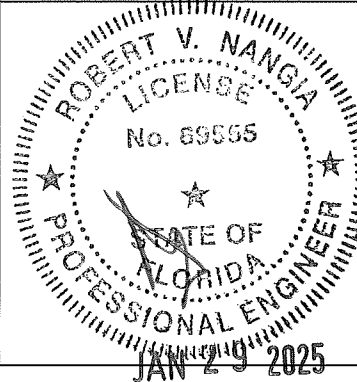


DRAWN BY	STEEL	DATE	9/30/15
SCALE	1:1	SHEET NO.	14 OF 17
TITLE:		CAD DRAWING NO.	EHH-601DE

ITEM	DESCRIPTION	MATERIAL	INTERNAL ID#	NOTES
1	HEAD, CHANNEL FRAME	6063-T5 ALUM.	125320	---
2	JAMB, CHANNEL FRAME	6063-T5 ALUM.	125321	---
3	BLADE, CHANNEL & SLEEVE FRAME	6063-T5 ALUM.	125309	---
4	SILL, CHANNEL FRAME	6063-T5 ALUM.	125044	---
5	MOUNTING ANGLE, CHANNEL FRAME	6061-T6 ALUM.	125811	AT JAMBS ONLY
6	MOUNTING ANGLE, SLEEVE FRAME	6063-T5 ALUM.	125151	AROUND PERIMETER
7	HEAD, SLEEVE FRAME	6005-T5 ALUM.	126101	---
8	JAMB, SLEEVE FRAME	6005-T5 ALUM.	126103	---
9	SILL, SLEEVE FRAME	6005-T5 ALUM.	126102	---
10	FORMED SLEEVE, SLEEVE FRAME	5052-H32 ALUM.	100172	---
---	---	---	---	---
20	#10-16x2.25L SCREW	300 SERIES STAINLESS STEEL	416351	---
21	1/4-14 DEWALT/ELCO BI-FLEX, PROVIDED BY LOUVER MANUFACTURER ①	300 SS HEAD & SHANK W/ COATED STEEL TIP ①	---	CHANNEL FRAME: 5.0 O.C. MAX SLEEVE FRAME: 6.0 O.C. MAX ①
22	#10-16x0.5L SCREW	300 SERIES SS	417207	---
23	1/8"Ø RIVET	ALUMINUM	---	---
---	---	---	---	---
30	SUBSTRATE FASTENER - SEE ANCHOR TABLE	SEE ANCHOR TABLE	---	BY OTHERS, MINIMUM OF ONE TYPE REQUIRED, SEE ANCHOR TABLE FOR ADDITIONAL INFORMATION
31	SUBSTRATE - GROUT FILLED CMU	GROUT FILLED CMU	---	BY OTHERS, IT IS THE RESPONSIBILITY OF THE PERMIT HOLDER TO VERIFY AND TO FACILITATE SEPARATION OF DISSIMILAR MATERIALS. SLEEVE FRAME IS NOT LIMITED TO SUBSTRATE TYPES SHOWN. CHANNEL FRAME IS LIMITED TO MINIMUM OF ONE OF THE SUBSTRATE TYPES SHOWN. ①
	SUBSTRATE - CONCRETE	CONCRETE	---	
	SUBSTRATE - STEEL STUD	STEEL	---	
	SUBSTRATE - STRUCTURAL STEEL	STEEL	---	
	SUBSTRATE - WOOD	WOOD	---	
	SUBSTRATE - ALUMINUM	ALUMINUM	---	
32	SEALANT (AND BACKER ROD AS NEEDED)	VARIES	---	BY OTHERS, OPTIONAL, PERIMETER SEALANT REQUIRED FOR AMCA 550 COMPLIANCE ①
33	SHIM, NON-COMPRESSIBLE	VARIES	---	BY OTHERS, OPTIONAL
34	SHIM/SEPARATE DISSIMILAR MATERIALS	VARIES	---	BY OTHERS, AS NEEDED ①
---	DAMPER PARTS SHOWN BELOW			①
44	DAMPER FLANGE	6063-T5 ALUM.	125147	---
45	DAMPER HEAD/SILL	6063-T5 ALUM.	125139	---
46	DAMPER JAMB	6063-T5 ALUM.	125084	---
47	DAMPER BLADE	6063-T5 ALUM.	125181	3.75 MAX SPACING
48	DAMPER BLADE SEAL	VARIES	---	VINYL/SILICONE/RUBBER
49	DAMPER JAMB SEAL	SS	190217	SS = STAINLESS STEEL
50	DAMPER TOP/BOTTOM CLOSURE	ALUMINUM	100166	---
51	DAMPER LINKAGE BAR	SS OR ZP	175685	ZP = ZINC PLATED OR GALV.
52	DAMPER AXLE BUSHING	DELFIN OR BRONZE	---	---
53A	DAMPER AXLE ASSEMBLY, NON-DRIVE SIDE	ZP STEEL & DELFIN	---	ZP STEEL PIN W/ DELFIN BUSHING
53B		ZP STEEL & BRONZE	---	ZP STEEL PIN W/ BRONZE BUSHING
53C		SS & DELFIN	---	SS PIN W/ DELFIN BUSHING
53D		SS & BRONZE	---	SS PIN W/ BRONZE BUSHING
54	DAMPER AXLE ASSEMBLY, DRIVE SIDE	SS OR ZP	---	---
55	1/4 DIA. E-CLIP	SS OR ZP	451588	---
56	#8 x 0.75 SCREW	SS	---	DAMPER FRAME CORNER SCREW
57	1/4-20 BOLT & NUT	SS OR ZP	---	BLADE LEVER ATTACHMENT
58	REINFORCING STRAP	SS OR ALUM.	---	OPTIONAL
59	DAMPER ACTUATOR CRANK ARM	SS OR ZP	---	---
60	DAMPER BLADE DRIVE LEVER	SS OR ZP	---	---
61	DAMPER MANUAL QUADRANT ACTUATOR	VARIES	---	OTHER STYLES/TYPES ALLOWED
62	LINKAGE BAR/ROD	SS OR ZP	---	CONNECTS ACTUATOR TO BLADE
63	1/4 SCREW	SS	416708	DAMPER FLANGE MOUNTING SCREW

REV 01: 12/11/24, WAS PAGE 8, MOVED GENERAL NOTES TO A NEW PAGE, ADDED ITEMS 23 & 34, REPLACED BRAND NAME OF ITEM 21, UPDATED THREADS OF ITEM 21, CLARIFIED MATERIAL OF ITEM 21, ADDED MAX O.C. OF ITEM 21, UPDATED AND ADDED FRAME TYPE NOTES TO ITEM 31, ADDED TO NOTE OF ITEM 32, ADDED DAMPER PART ITEMS 44-63.

PRODUCT REVISED
As complying with the Florida Building Code
NOA-No. **25-0214.03**
Expiration Date: **12/14/2030**
By: *Manuel Perez*
Miami-Dade Product Control



DRAWN BY
STEELE

DATE
9/30/15

SCALE
1:1

SHEET NO.
15 OF 17

CAD DRAWING NO.
EHH-601DE

P.O. BOX 410
SCHOFIELD,
WISCONSIN 54476-0410

TITLE:
EHH-601DE & VCD-40 DAMPER
ITEM DESCRIPTIONS

GENERAL NOTES:

1. IT IS THE RESPONSIBILITY OF THE PERMIT HOLDER TO VERIFY THE STRUCTURAL INTEGRITY OF THE EXISTING STRUCTURE TO SUPPORT THE LOADS IMPOSED BY THE LOUVER ASSEMBLY. THE LOUVER MANUFACTURER DOES NOT DETERMINE THE STRUCTURAL INTEGRITY OF THE SUBSTRATE STRUCTURE.
2. THE LOUVER HAS BEEN DESIGNED AND TESTED IN ACCORDANCE WITH MIAMI-DADE COUNTY PROTOCOLS (AND QUALIFIED IN ACCORDANCE WITH THE CURRENT FLORIDA BUILDING CODE AND TEST PROTOCOLS/STANDARDS THEREIN):
 - TAS-201 (LARGE MISSILE IMPACT TEST, 50 FT/S IMPACT SPEED) ①
 - TAS-202 (UNIFORM STATIC WIND PRESSURE TEST)
 - TAS-203 (UNIFORM CYCLIC WIND PRESSURE TEST)
 - AMCA 550 (HIGH VELOCITY WIND DRIVEN RAIN RESISTANCE, WITH OPTIONAL VCD-40 DAMPER AND DAMPER BLADES FULLY CLOSED) ①
3. THIS LOUVER HAS BEEN DESIGNED, TESTED, AND APPROVED TO WITHSTAND DESIGN PRESSURES OF UP TO AND INCLUDING +/-150 PSF ALLOWABLE STRESS DESIGN (ASD). ①
4. THE MAXIMUM SINGLE SECTION SIZE IS 48 INCHES WIDE BY 48 INCHES HIGH. MULTIPLE SECTIONS MAY BE MOUNTED TOGETHER TO CREATE A MULTI-WIDE AND/OR MULTI-HIGH ASSEMBLY PROVIDED THERE IS ADEQUATE SUBSTRATE ON ALL FOUR SIDES OF EACH SINGLE SECTION AND SECURED TO THE SUBSTRATE AS NOTED HEREIN.
5. GENERAL LOUVER CONSTRUCTION: HEAD, SILL, JAMBS, AND BLADES FOR ALL CASES ARE EXTRUDED ALUMINUM. BLADE SPACING IS 2.125 INCHES. BLADES AND HEAD ARE SECURED TO JAMBS WITH TWO SCREWS PER END. SILLS ARE SECURED TO JAMBS WITH TWO SCREWS PER SILL END.
6. INSTALLER TO PROVIDE SEPARATION OF DIS-SIMILAR MATERIALS AS REQUIRED PER THE FLORIDA BUILDING CODE. ①
7. ALL ALUMINUM, STAINLESS STEEL, AND PLATED/COATED STEEL PARTS PROVIDED BY THE LOUVER MANUFACTURER ARE INHERENTLY CORROSION RESISTANT OR HAVE A CORROSION RESISTANT COATING.
8. STEEL, STAINLESS STEEL, AND ALUMINUM PARTS MAY BE MADE OUT OF ALTERNATE ALLOY THAT HAS EQUAL OR GREATER YIELD STRENGTH. PART DIMENSIONS ARE MINIMUMS UNLESS DEFINED OTHERWISE.
9. THE INTERNAL ID NUMBERS SHOWN ARE FOR FACTORY PURPOSES ONLY AND MAY BE UPDATED AT ANY TIME. ANY UPDATES WILL NOT ALTER THE ITEM AS DESCRIBED HEREIN.
10. ALL DIMENSION UNITS ARE IMPERIAL.
11. WITHOUT THE OPTIONAL VCD-40 DAMPER, THE LOUVER IS NOT DESIGNED TO PREVENT WIND DRIVEN RAIN FROM PENETRATING INTO THE SPACE BEHIND THE LOUVER. THE LOUVER SHALL BE INSTALLED IN A LOCATION WHERE THE SPACE BEHIND THE LOUVER IS DESIGNED TO DRAIN WATER PENETRATING INTO THE ROOM OR THE ROOM WILL HOUSE WATER RESISTANT/PROOF EQUIPMENT, COMPONENTS, AND/OR SUPPLIES. ①
12. WITH THE OPTIONAL VCD-40 DAMPER AND THE DAMPER BLADES FULLY CLOSED, THE LOUVER-DAMPER ASSEMBLY IS DESIGNED TO PREVENT WIND-DRIVEN RAIN FROM PENETRATING INTO THE SPACE BEHIND THE LOUVER-DAMPER ASSEMBLY, AND THE ASSEMBLY MAY BE IN STALLED IN A LOCATION WHERE THE ROOM BEHIND THE LOUVER IS NOT DESIGNED TO DRAIN WATER PENETRATING INTO THE ROOM AND THE ROOM CAN HOUSE NON-WATER RESISTANT/PROOF EQUIPMENT, COMPONENTS, AND/OR SUPPLIES. ①
13. THE VCD-40 MAY BE OPERATED BY THE MANUAL QUADRANT SHOWN OR BY ANY TYPE OF ACTUATOR AND ANY TYPE OF LINKAGE/ASSEMBLY COMPONENTS. ①
14. THE "SLEEVE" FRAME SETUP IS APPROVED FOR INSTALLATION INTO "CRACKED CONCRETE" SUBSTRATE, WHEREAS THE "CHANNEL" FRAME SETUP IS APPROVED FOR INSTALLATION INTO "CONCRETE" SUBSTRATE. ①
15. SUBSTRATE FOR SLEEVE FRAME SETUP: ANY SUBSTRATE IS ALLOWED THAT CAN WITHSTAND LOADS IMPOSED BY THE LOUVER ASSEMBLY (DETERMINED BY OTHERS). ALLOWABLE SUBSTRATES (BY OTHERS) INCLUDE (BUT NOT LIMITED TO) WOOD, STEEL, STEEL STUDS, CONCRETE, CRACKED CONCRETE, CMU, AND/OR ALUMINUM. ①
16. SUBSTRATE FOR CHANNEL FRAME SETUP: LIMITED TO WOOD, STEEL, STEEL STUDS, CONCRETE (NON-CRACKED), GROUT FILLED CMU, AND/OR ALUMINUM. SUBSTRATES SHALL MEET THE MINIMUMS AS NOTED IN THE "SUBSTRATE AND FASTENER TABLE". ①

DRAWN BY	DATE
STEELE	9/30/15
SCALE	1:1
SHEET NO.	16 OF 17
CAD DRAWING NO.	EAH-601DE

GREENHECK
P.O. BOX 410 SCHOFIELD,
WISCONSIN 54476-0410

TITLE: EHH-601DE & VCD-40 DAMPER
GENERAL NOTES

PRODUCT REVISED
As complying with the Florida
Building Code
NOA-No. **25-0214.03**
Expiration Date: **12/14/2030**
By: *Manuel Perez*
Miami-Dade Product Control

