



DEPARTMENT OF REGULATORY AND ECONOMIC RESOURCES (RER)  
BOARD AND CODE ADMINISTRATION DIVISION

MIAMI-DADE COUNTY  
PRODUCT CONTROL SECTION

11805 SW 26 Street, Room 208  
Miami, Florida 33175-2474  
T (786) 315-2590 F (786) 315-2599

[www.miamidade.gov/economy](http://www.miamidade.gov/economy)

## NOTICE OF ACCEPTANCE (NOA)

**Seguro Aluminum Railings, Inc.**  
**21 Regan Road Unit D & E**  
**Brampton, Ontario Canada L7A 1B2**

### SCOPE:

This NOA is being issued under the applicable rules and regulations governing the use of construction materials. The documentation submitted has been reviewed and accepted by Miami-Dade County RER-Product Control Section to be used in Miami Dade County and other areas where allowed by the Authority Having Jurisdiction (AHJ).

This NOA shall not be valid after the expiration date stated below. The Miami-Dade County Product Control Section (In Miami Dade County) and/or the AHJ (in areas other than Miami Dade County) reserve the right to have this product or material tested for quality assurance purposes. If this product or material fails to perform in the accepted manner, the manufacturer will incur the expense of such testing and the AHJ may immediately revoke, modify, or suspend the use of such product or material within their jurisdiction. RER reserves the right to revoke this acceptance if it is determined by Miami-Dade County Product Control Section that this product or material fails to meet the requirements of the applicable building code.

This product is approved as described herein and has been designed to comply with the High Velocity Hurricane Zone of the Florida Building Code.

### DESCRIPTION: Aluminum Glass Railing System – SR1

**APPROVAL DOCUMENT:** Drawing No. SR1-FL, titled "SR1-Aluminum Balcony Railings, sheets 1 through 4 of 4, prepared by Building Drops, signed and sealed by Hermes F. Norero, P.E., on 02/12/2025, bearing the Miami-Dade County Product Control Revision stamp with the Notice of Acceptance number and the expiration date by the Miami-Dade County Product Control Section.

### MISSILE IMPACT RATING: Large and Small Missile Impact Resistant

**LABELING:** Each unit shall bear a permanent label with the manufacturer's name or logo, city, state and the following statement: "Miami-Dade County Product Control Approved", unless otherwise noted herein.

**RENEWAL** of this NOA shall be considered after a renewal application has been filed and there has been no change in the applicable building code negatively affecting the performance of this product.

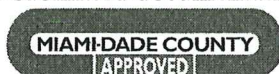
**TERMINATION** of this NOA will occur after the expiration date or if there has been a revision or change in the materials, use, and/or manufacture of the product or process. Misuse of this NOA as an endorsement of any product, for sales, advertising or any other purposes shall automatically terminate this NOA. Failure to comply with any section of this NOA shall be cause for termination and removal of NOA.

**ADVERTISEMENT:** The NOA number preceded by the words Miami-Dade County, Florida, and followed by the expiration date may be displayed in advertising literature. If any portion of the NOA is displayed, then it shall be done in its entirety.

**INSPECTION:** A copy of this entire NOA shall be provided to the user by the manufacturer or its distributors and shall be available for inspection at the job site at the request of the Building Official. The structural adequacy of the supporting structures is not part of this approval & shall be reviewed by the corresponding Building Dept.

This NOA **revises NOA #21-0219.03** and consists of this page 1, evidence submitted page E-1 as well as approval document mentioned above.

The submitted documentation was reviewed by **Helmy A. Makar, P.E., M.S.**



*Helmy A. Makar*  
05/29/25

NOA No. 25-0214.05  
Expiration Date: 01/19/2028  
Approval Date: 05/29/2025  
Page 1

**Seguro Aluminum Railings, Inc.**

**NOTICE OF ACCEPTANCE: EVIDENCE SUBMITTED**

**1. EVIDENCE SUBMITTED UNDER PREVIOUS APPROVAL #21-0219.03**

**A. DRAWINGS**

1. *Drawing No. SR1-FL, titled "SR1-Aluminum Balcony Railings, sheets 1 through 4 of 4, prepared by Building Drops, signed & sealed by Hermes F. Norero, P.E., on 12/13/2022.*

**B. TESTS**

1. *Test Report No. FTL-17100, issued by Fenestration Testing Laboratory, Inc., dated 06/25/2019, signed & sealed by Idalmis Ortega, P.E., testing Glass Railing for concentrated and distributed loads per FBC 1618.4.6, Impacts per ANSI Z97.1, and Static Wind Load per TAS 202-94.*

**C. CALCULATIONS**

1. *Calculation titled "Product Evaluation Report", dated 12/05/2022, prepared by Building Drops, signed and sealed by Hermes F. Norero, P.E., on 12/13/2022.*

**D. QUALITY ASSURANCE**

1. *By Miami-Dade County Department of Regulatory and Economic Resources.*

**E. MATERIAL CERTIFICATIONS**

1. *None.*

**F. STATEMENTS**

1. *FBC, 2020 Edition Compliance Letter prepared by Building Drops, dated 12/05/2022, signed and sealed by Hermes F. Norero, P.E., on 12/13/2022.*

**2. NEW EVIDENCE SUBMITTED**

**A. DRAWINGS**

1. *Drawing No. SR1-FL, titled "SR1-Aluminum Balcony Railings, sheets 1 through 4 of 4, prepared by Building Drops, signed and sealed by Hermes F. Norero, P.E., on 02/12/2025.*

**B. TESTS**

1. *None.*

**C. CALCULATIONS**

1. *Calculation titled "Product Evaluation Report", dated 01/21/2025, prepared by Building Drops, signed and sealed by Hermes F. Norero, P.E., on 01/21/2025.*

**D. QUALITY ASSURANCE**


1. *By Miami-Dade County Department of Regulatory and Economic Resources.*

**E. MATERIAL CERTIFICATIONS**

1. *None.*

**F. STATEMENTS**

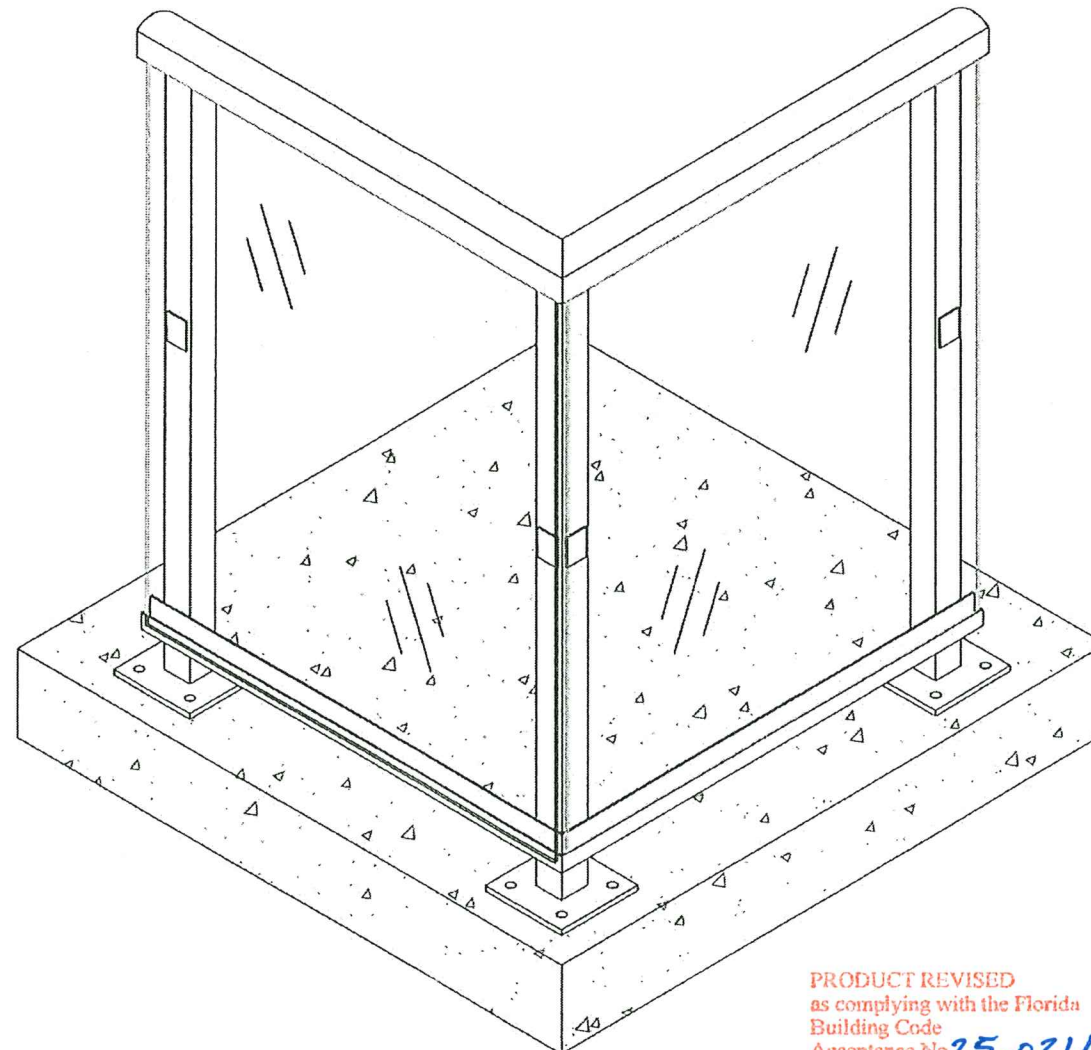
1. *FBC, 2023 Edition Compliance Letter prepared by Building Drops, dated 01/21/2025, signed and sealed by Hermes F. Norero, P.E.*

  
\_\_\_\_\_  
Helmy A. Makar, P.E., M.S.  
Product Control Section Supervisor  
NOA No. 25-0214.05  
Expiration Date: 01/19/2028  
Approval Date: 05/29/2025





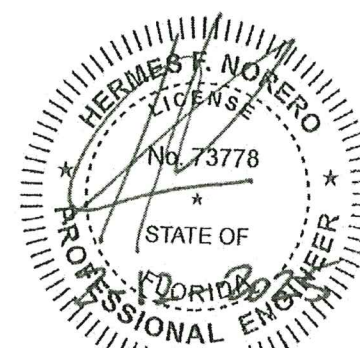
SEGURO ALUMINUM RAILINGS INC.  
21 REGAN ROAD  
UNIT D&E  
BRAMPTON ON L7A 1B2  
TEL: 905-840-RAIL (7245)



PRODUCT REVISED  
as complying with the Florida  
Building Code  
Acceptance No 25-0214.05  
Expiration Date 01/19/2028  
By *[Signature]*  
Miami Desk Product Control

# SR1-ALUMINUM BALCONY RAILINGS

ENGINEER STAMP:



HERMES F. NORENO, P.E.  
FLORIDA P.E. NO. 73778  
BUILDING DROPS INC.  
1900 NE MIAMI CT UNIT 2-15,  
MIAMI, FL 33132



SEGURO ALUMINUM RAILINGS INC.  
21 REGAN ROAD UNIT D&E  
BRAMPTON ON, L7A 1B2  
TEL: 905-840-RAIL(7245)

CLIENT:  
SEGURO ALUMINUM RAILINGS INC.

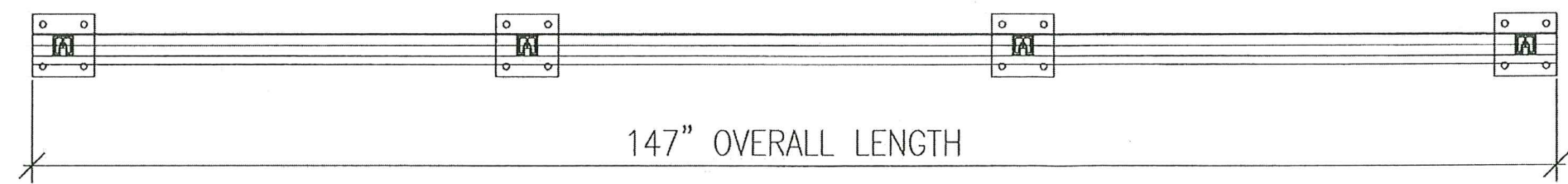
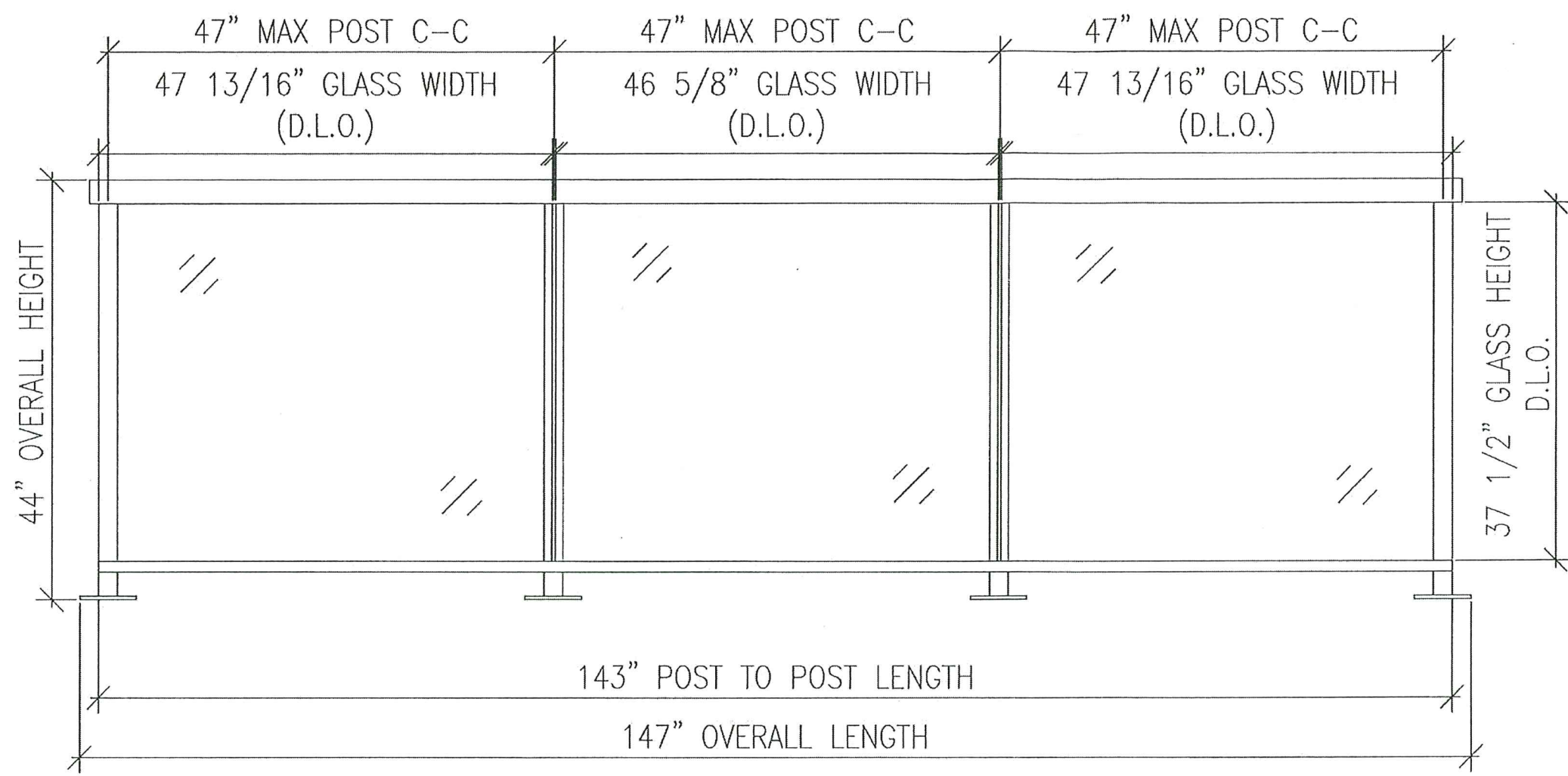
- DESIGN NOTES:
1. GUARDRAIL ASSEMBLY IS IN COMPLIANCE WITH THE 2023 FLORIDA BUILDING CODE SECTION 1607.9.1.1, 2407, 1014 AND 1015, ACCORDINGLY IT WILL RESIST A LOAD OF MIN 50 LB/FT APPLIED IN ANY DIRECTION AT THE TOP RAIL, AND THE DESIGN LOADS ON GUARDS AS MENTIONED BELOW:
    - A. CONCENTRATED LOADS: HANDRAILS AND GUARDS HAVE BEEN TESTED TO RESIST A CONCENTRATED LOAD OF 200 POUNDS (0.89 kN) IN ACCORDANCE WITH F.B.C. SECTION 1607.9.1.1 AND ASCE 7 SECTION 4.5.1.
    - B. INTERMEDIATE RAIL: INTERMEDIATE RAILS(ALL THOSE EXCEPT THE HANDRAILS), BALUSTERS AND PANEL FILLERS HAVE BEEN TESTED TO RESIST A CONCENTRATED LOAD OF 50 POUNDS (0.22 kN) IN ACCORDANCE WITH F.B.C. SECTION 1607.9.1.2 AND ASCE 7 SECTION 4.5.1.
    - C. IMPACT LOADS: LAMINATED GLAZING USED IN PLACE OF PICKETS HAS BEEN TESTED TO RESIST A KINETIC ENERGY IMPACT LOAD OF 400FT-LB PER ANSI Z97.1 AND FBC SECTION 1618.4.6.3
  2. GUARDS CONTAINING GLASS PANELS HAVE BEEN DESIGNED WITH A SUFFICIENT GLASS CLEARANCES TO ACCOMMODATE LATERAL LOAD-INDUCED DEFLECTION AND THERMAL EXPANSION/CONTRACTION (TEMP. RANGE -30°C TO +45°C)
  3. THIS PRODUCT HAS BEEN DESIGNED AND TESTED TO COMPLY WITH THE REQUIREMENTS OF THE F.B.C. FOR HIGH VELOCITY HURRICANE ZONE (HVHZ)
  4. SUPPORTING CONSTRUCTION MUST BE STRUCTURALLY ADEQUATE TO ACCOMMODATE GUARD AND/OR HANDRAIL LOADS DETERMINED BY A DESIGN PROFESSIONAL.
  5. DESIGN OF ALUMINUM STRUCTURAL COMPONENTS: TO F.B.C. CHAPTER 20
  6. DESIGN OF GLAZING PANELS TO THE FOLLOWING
    - A. F.B.C. SECTION 2407
    - B. F.B.C. SECTION 2406
  8. DESIGN STANDARD OF ANCHORS: Type 304, ASTM F593
  9. DESIGN OF ANCHORS INTO CONCRETE: TO ACI 318 APPENDIX D

- MATERIALS:
2. ALUMINUM ALLOY AND TEMPER
    - A. WELDING OPERATIONS AND PROCEDURES USED SHALL BE QUALIFIED TO AWS STANDARD D1.2/D1.2M
    - B. SOLID INFILL PANELS:3003-H14
  2. BUILD AREA TO BE GROUNDED AND BUFFED SMOOTH ON TOP AND OUTER PERIMETER EDGES
  3. ANCHOR HARDWARE: STAINLESS STEEL; (ASI TYPE 304 OR TYPE 316)
    - A. ALL BOLTS TO BE STAINLESS STEEL; ANCHORS TO BE S.S ASTM F593
    - B. ALL SCREWS TO BE HIGH STRENGTH STAINLESS STEEL, HEAT TREATED AISI-TYPE 410 ALLOY AS PER SPECIFICATION
  4. ALL GLASS WILL BE SAFETY GLASS ACCORDING TO FBC-20, SECTION 2406.1.1.
  5. GUARDS CONTAINING IN FILL GLASS PANELS OR BALUSTERS: LAMINATE GLASS COMPLYING WITH CATEGORY II OF CPSC 16 CFR PART 1201 OR CLASS A OF ANSI Z97.1
  6. ALL CONCRETE TO BE AT LEAST 4000 PSI COMPRESSIVE STRENGTH.
  7. UV STABLE RIGID PVC GLAZING GASKETS C/W FLEXIBLE RUBBER LIPS SECURE GLASSING BY HOLDING THE GLASS INTO UPPER AND LOWER ALUMINUM EXTRUSIONS
  8. NUFLEX 302 GENERAL PURPOSE CLEAR SILICON BETWEEN THE GLASS PANELS ( TEMPERATURE RANGE -46° TO 232° C)
  9. ALUMINUM COATING : TO COMPLIANCE WITH AAMA SPECIFICATIONS AS PER PROJECT REQUIREMENTS.

- GENERAL:
1. CONTRACTOR TO FIELD-VERIFY ALL DIMENSIONS QUANTITIES PRIOR TO FABRICATION. VERTICAL MEASUREMENTS SHALL ACCOUNT FOR DECK SLOPE BUT NOT FOR DEVIATIONS FROM A PLANAR SURFACE. ANY SIGNIFICANT SURFACE DEVIATIONS WILL BE CORRECTED ON-SITE WITH THE PLACEMENT OF SHIMS BELOW THE POST BASE PLATES.
  2. CONTRACTOR TO VERIFY FINISH COLOR WITH OWNER PRIOR TO FABRICATION
  3. INSTALL ALL ANCHORS IN ACCORDANCE WITH MANUFACTURES SPECIFICATIONS, OBSERVING ALL MINIMUM EDGE DISTANCE AND SPACING REQUIREMENTS.
  4. CONTRACTORS IS NOT RESPONSIBLE FOR WATER TIGHTNESS AT CONNECTIONS TO PARAPETS, WALLS, COLUMNS FLOORS AND/OR ROOFS AND FOR THE STRUCTURAL ADEQUACY OF THE BUILDING COMPONENTS PROVIDING SUPPORT FOR GUARDRAILS AND HANDRAILS INCLUDING BACKING FOR SPECIFIC CONNECTIONS.
  5. FABRICATION WILL MEET FABRICATION TOLERANCE WITHIN THE SPECIFIED RANGE
  6. TOLERANCE FOR RAILING SECTION OF 6"6" OR LESS IS +/-0.08" AND FOR MORE THAN 80" IS +/-0.14".
  7. GLAZING PENETRATION: 0.5"
  8. GLAZING METHOD: MARINE GLAZED.

DRAWING NUMBER:	DRAWING BY	CHECKED BY
SR1-FL	H.S.K.	J.A.
GLASS STYLE: TYPICAL GLAZING IS MADE OF THE FOLLOWING COMPONENTS 1/8" HEAT STRENGTHENED GLASS/0.035" THICK CLEAR KURARAY SENTRYGLAS INTERLAYER/1/8" HEAT STRENGTHENED GLASS GLAZING PENETRATION: 0.5", GLAZING METHOD: MARINE GLAZED		
PAGE#:	DATE:	
1 OF 4	03/10/2020	





MAXIMUM ALLOWABLE DESIGN PRESSURE  
+67.0/-67.0 PSF

PRODUCT REVISED  
as complying with the Florida  
Building Code  
Acceptance No. 25-0214.05  
Expiration Date 08/19/2025  
By H. G. H. Mc  
Miami Data Product Control

SEGURO ALUMINUM RAILINGS INC.

21 REGAN ROAD UNIT D&E

BRAMPTON ON, L7A 1B2

TEL: 905-840-RAIL(7245)

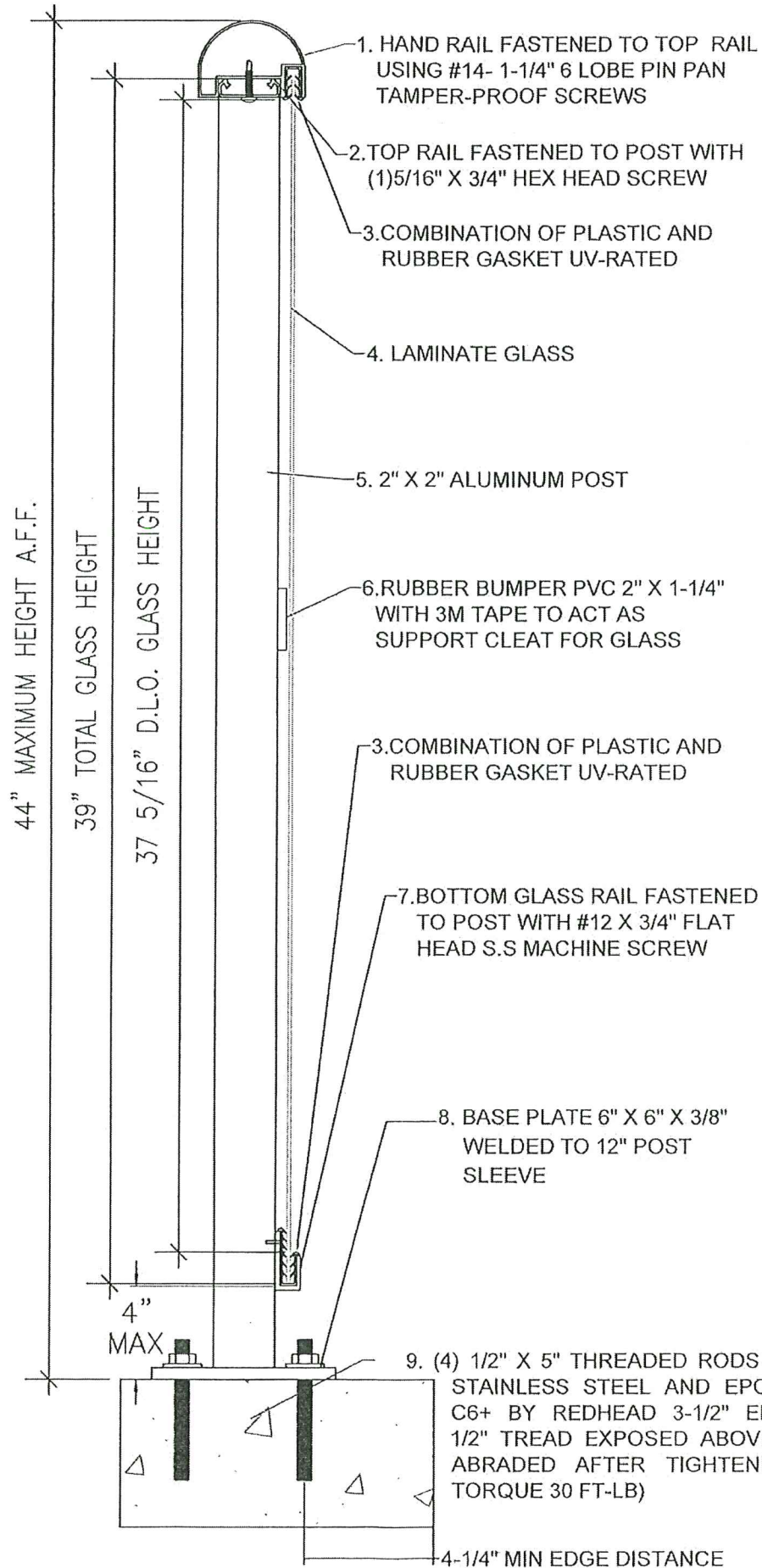
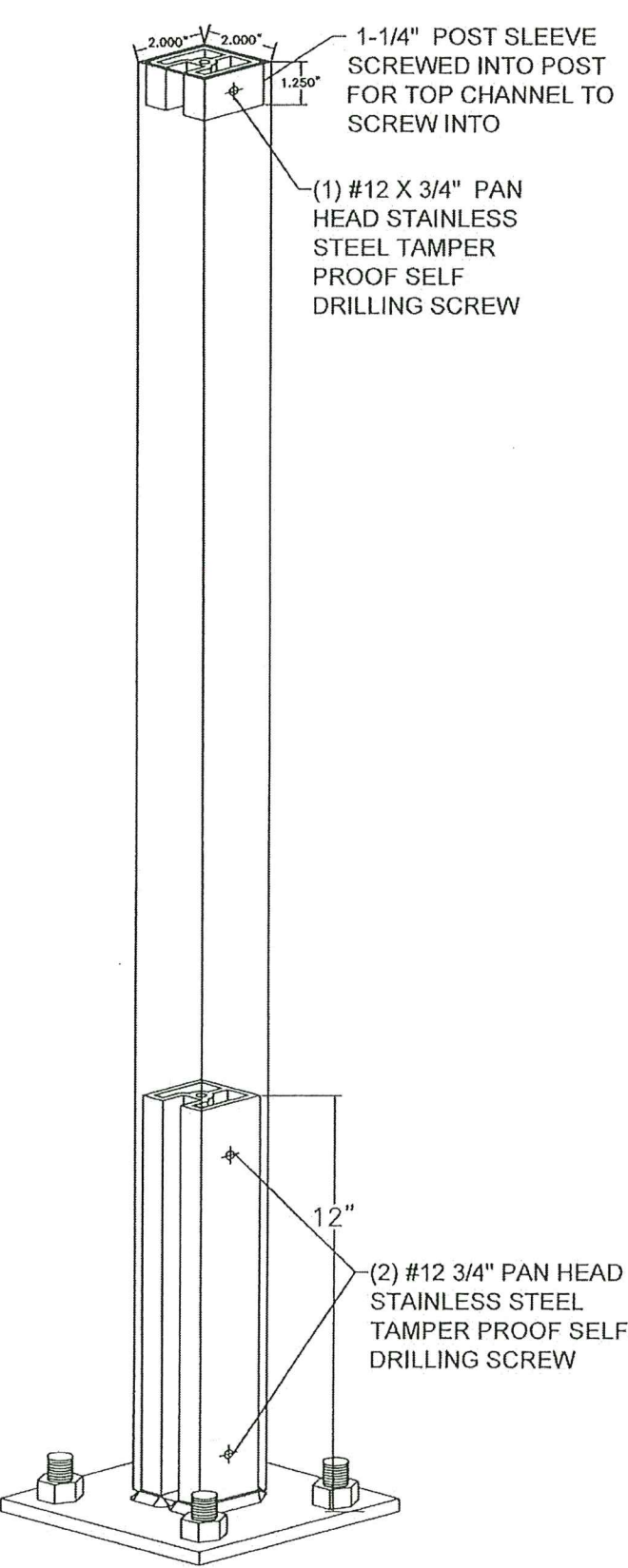
CLIENT:  
SEGURO ALUMINUM RAILINGS INC.

ENGINEER STAMP:

HERMES F. NORENO, P.E.  
FLORIDA P.E. NO. 73778  
BUILDING DROPS INC.  
1900 NE MIAMI CT UNIT 2-15,  
MIAMI, FL 33132

DRAWING NUMBER:	DRAWING BY	CHECKED BY
SR1-FL	H.S.K.	J.A.
GLASS STYLE: TYPICAL GLAZING IS MADE OF THE FOLLOWING COMPONENTS 1/8" HEAT STRENGTHENED GLASS/0.035" THICK CLEAR KURARAY SENTRYGLAS INTERLAYER/1/8" HEAT STRENGTHENED GLASS GLAZING PENETRATION: 0.5", GLAZING METHOD: MARINE GLAZED		
PAGE#:	DATE:	
2 OF 4	03/10/2020	

# SR1-DETAILS



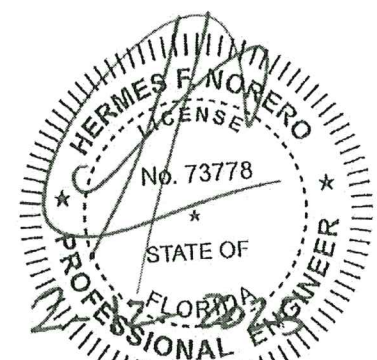
PRODUCT REVISED  
as complying with the Florida  
Building Code  
Acceptance No. 25-0214.05  
Expiration Date 01/19/2024  
By H.G.A. M.W.  
Miami Code Product Control



SEGURO ALUMINUM RAILINGS INC.  
21 REGAN ROAD UNIT D&E  
BRAMPTON ON, L7A 1B2  
TEL: 905-840-RAIL(7245)

CLIENT:  
SEGURO ALUMINUM RAILINGS INC.

## ENGINEER STAMP:



HERMES F. NORERO, P.E.  
FLORIDA P.E. NO. 73778  
BUILDING DROPS INC.  
1900 NE MIAMI CT UNIT 2-15,  
MIAMI, FL 33132

DRAWING NUMBER:	DRAWING BY	CHECKED BY
SR1-FL	H.S.K.	J.A.
GLASS STYLE: TYPICAL GLAZING IS MADE OF THE FOLLOWING COMPONENTS 1/8" HEAT STRENGTHENED GLASS/0.035" THICK CLEAR KURARAY SENTRYGLAS INTERLAYER/1/8" HEAT STRENGTHENED GLASS GLAZING PENETRATION: 0.5", GLAZING METHOD: MARINE GLAZED		
PAGE#:	DATE:	
3 OF 4	03/10/2020	





SEGURO ALUMINUM RAILINGS INC.  
21 REGAN ROAD UNIT D&E  
BRAMPTON ON, L7A 1B2  
TEL: 905-840-RAIL(7245)

CLIENT:  
SEGURO ALUMINUM RAILINGS INC.

PRODUCT REVISED  
as complying with the Florida  
Building Code  
Acceptance No. 25-0214.05  
Expiration Date 01/19/2028  
By *Hely A. Melon*  
Miami Dade Product Control

ENGINEER STAMP:



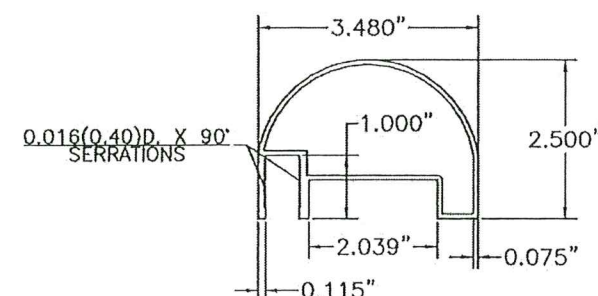
HERMES F. NORENO, P.E.  
FLORIDA P.E. NO. 73778  
BUILDING DROPS INC.  
1900 NE MIAMI CT UNIT 2-15,  
MIAMI, FL 33132

DRAWING NUMBER:	DRAWING BY	CHECKED BY
SR1-FL	H.S.K.	J.A.

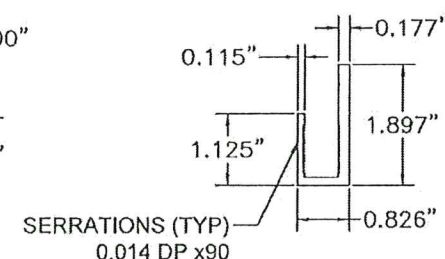
GLASS STYLE: TYPICAL GLAZING IS MADE OF THE FOLLOWING COMPONENTS  
1/8" HEAT STRENGTHENED GLASS/0.035" THICK CLEAR KURARAY  
SENTRYGLAS INTERLAYER/1/8" HEAT STRENGTHENED GLASS  
GLAZING PENETRATION: 0.5", GLAZING METHOD: MARINE GLAZED

PAGE#:	DATE:
4 OF 4	03/10/2020

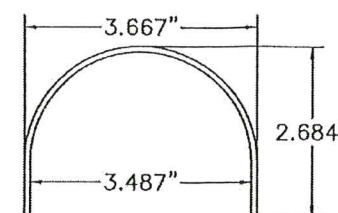
HAND RAIL  
ALLOY# 6063-T6



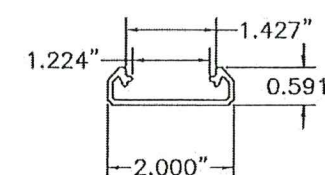
BOTTOM  
GLASS RAIL  
DIE# S-27813  
ALLOY# 6005A-T61



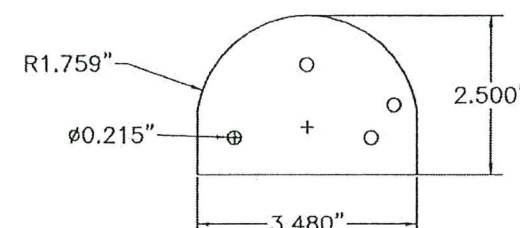
HAND RAIL JOINER  
ALLOY# 6063-T6



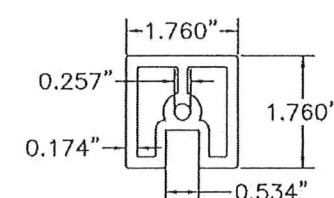
TOP RAIL  
DIE# S-27810  
ALLOY# 6063-T6



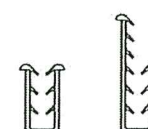
END CAPS



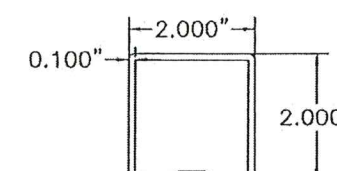
POST SLEEVE  
DIE# H-27815  
ALLOY# 6063-T6



COMBINATION OF UV  
PLASTIC AND RUBBER  
DUROMETER 80  
DIE# S1606, S1604

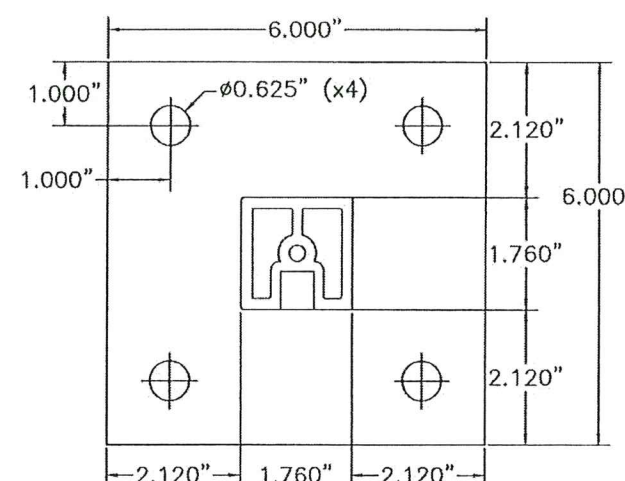


POST  
DIE# H-27816  
ALLOY# 6061-T6

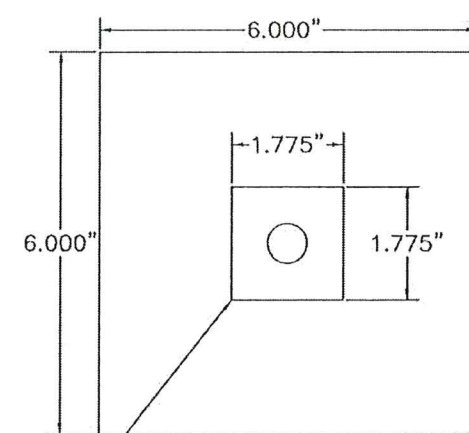


ASSEMBLED BASE PLATE

ASSEMBLED BASE PLATE



BASE PLATE  
ALLOY# 6063-T6



HOLE PUNCHED FOR  
SLEEVE TO BE PLACED  
INTO BEFORE WELD

