



BUILDING CODE COMPLIANCE OFFICE (BCCO)  
PRODUCT CONTROL DIVISION

MIAMI-DADE COUNTY, FLORIDA  
METRO-DADE FLAGLER BUILDING  
140 WEST FLAGLER STREET, SUITE 1603  
MIAMI, FLORIDA 33130-1563  
(305) 375-2901 FAX (305) 375-2908

[www.miamidade.gov/buildingcode](http://www.miamidade.gov/buildingcode)

## NOTICE OF ACCEPTANCE (NOA)

Horton Automatics Division of Overhead Door  
4242 Baldwin Boulevard  
Corpus Christi, TX 78405

### SCOPE:

This NOA is being issued under the applicable rules and regulations governing the use of construction materials. The documentation submitted has been reviewed by Miami-Dade County Product Control Division and accepted by the Board of Rules and Appeals (BORA) to be used in Miami Dade County and other areas where allowed by the Authority Having Jurisdiction (AHJ).

This NOA shall not be valid after the expiration date stated below. The Miami-Dade County Product Control Division (In Miami Dade County) and/or the AHJ (in areas other than Miami Dade County) reserve the right to have this product or material tested for quality assurance purposes. If this product or material fails to perform in the accepted manner, the manufacturer will incur the expense of such testing and the AHJ may immediately revoke, modify, or suspend the use of such product or material within their jurisdiction. BORA reserves the right to revoke this acceptance, if it is determined by Miami-Dade County Product Control Division that this product or material fails to meet the requirements of the applicable building code.

This product is approved as described herein, and has been designed to comply with the Florida Building Code, including the High Velocity Hurricane Zone.

### DESCRIPTION: Series "2001/110 "(O-Sx-Sx-O) Aluminum Automatic Sliding Door w/ Breakout-NI

**APPROVAL DOCUMENT:** Drawing No. 110906, titled "Series 2001/110 Non-Impact Slide", sheets 1 through 4, of 4 prepared by manufacturer, dated 12/17/07 and last revised on 09-09-08, signed and sealed by John E. Scates, P.E., bearing the Miami-Dade County Product Control Approval stamp with the Notice of Acceptance number and approval date by the Miami-Dade County Product Control Division.

### MISSILE IMPACT RATING: None

1. Approved Hurricane protection Devices complying w/ FBC are required.
2. Not approved where water infiltration is required.

**LABELING:** Each unit shall bear a permanent label with the manufacturer's name or logo, city, state and following statement: "Miami-Dade County Product Control Approved", unless otherwise noted herein.

**RENEWAL** of this NOA shall be considered after a renewal application has been filed and there has been no change in the applicable building code negatively affecting the performance of this product.

**TERMINATION** of this NOA will occur after the expiration date or if there has been a revision or change in the materials, use, and/or manufacture of the product or process. Misuse of this NOA as an endorsement of any product, for sales, advertising or any other purposes shall automatically terminate this NOA. Failure to comply with any section of this NOA shall be cause for termination and removal of NOA.

**ADVERTISEMENT:** The NOA number preceded by the words Miami-Dade County, Florida, and followed by the expiration date may be displayed in advertising literature. If any portion of the NOA is displayed, then it shall be done in its entirety.

**INSPECTION:** A copy of this entire NOA shall be provided to the user by the manufacturer or its distributors and shall be available for inspection at the job site at the request of the Building Official.

This NOA consists of this page 1 and evidence pages E-1 as well as approval document mentioned above.

The submitted documentation was reviewed by **Ishaq I. Chanda, P.E.**



NOA No 08-0528.01  
Expiration Date: October 09, 2013  
Approval Date: October 09, 2008  
Page 1

2/17/08

**Horton Automatics Division of Overhead Door**

**NOTICE OF ACCEPTANCE: EVIDENCE SUBMITTED**

**A. DRAWINGS**

1. Manufacturer's die drawings and sections.
2. Drawing No. **110906**, titled "Series 2001/110 Non-Impact Slide", sheets 1 through 4, of 4 prepared by manufacturer, dated 12/17/07 and last revised on 09-09-08, signed and sealed by John E. Scates, P.E.

**B. TESTS**

1. Test reports on 1) Air Infiltration Test, per FBC, TAS 202-94  
2) Uniform Static Air Pressure Test, Loading per FBC, TAS 202-94  
3) Forced Entry Test, per FBC 2411 3.2.1, TAS 202-94.  
4) Water Resistant test, per FBC, TAS 202-94 (Not conducted)  
along with installation diagram of an aluminum automatic sliding glass doors, prepared by Hurricane Testing Laboratories, Test Report No. **HTL-0322-1103-07**, dated 03/14/08 and revised on 06/12/08 by an addendum letter, signed and sealed by Vinu Abraham, P.E.

**C. CALCULATIONS:**

1. Anchor verification calculations and structural analysis dated 03/12/08 and last revised on 09/09/08, prepared, signed and sealed by John E. Scates, P.E.
2. Glazing complies w/ ASTM E-1300-02

**D. QUALITY ASSURANCE BY**

1. Miami Dade building Code Compliance Office (BCCO).

**E. MATERIAL CERTIFICATIONS**

1. None

**F. STATEMENTS**

1. Statement letter of conformance & "No financial interest", dated 03/12/08, signed & sealed by John E. Scates, P.E.
2. Addendum letter dated 06-12-08, issued by Hurricane Testing lab, signed and sealed by Vinu Abraham, P. E.
3. Statement letter of compliance, part of above test report.

**G. OTHER**

1. None

*Ishaq I. Chanda*

Ishaq I. Chanda, P.E.

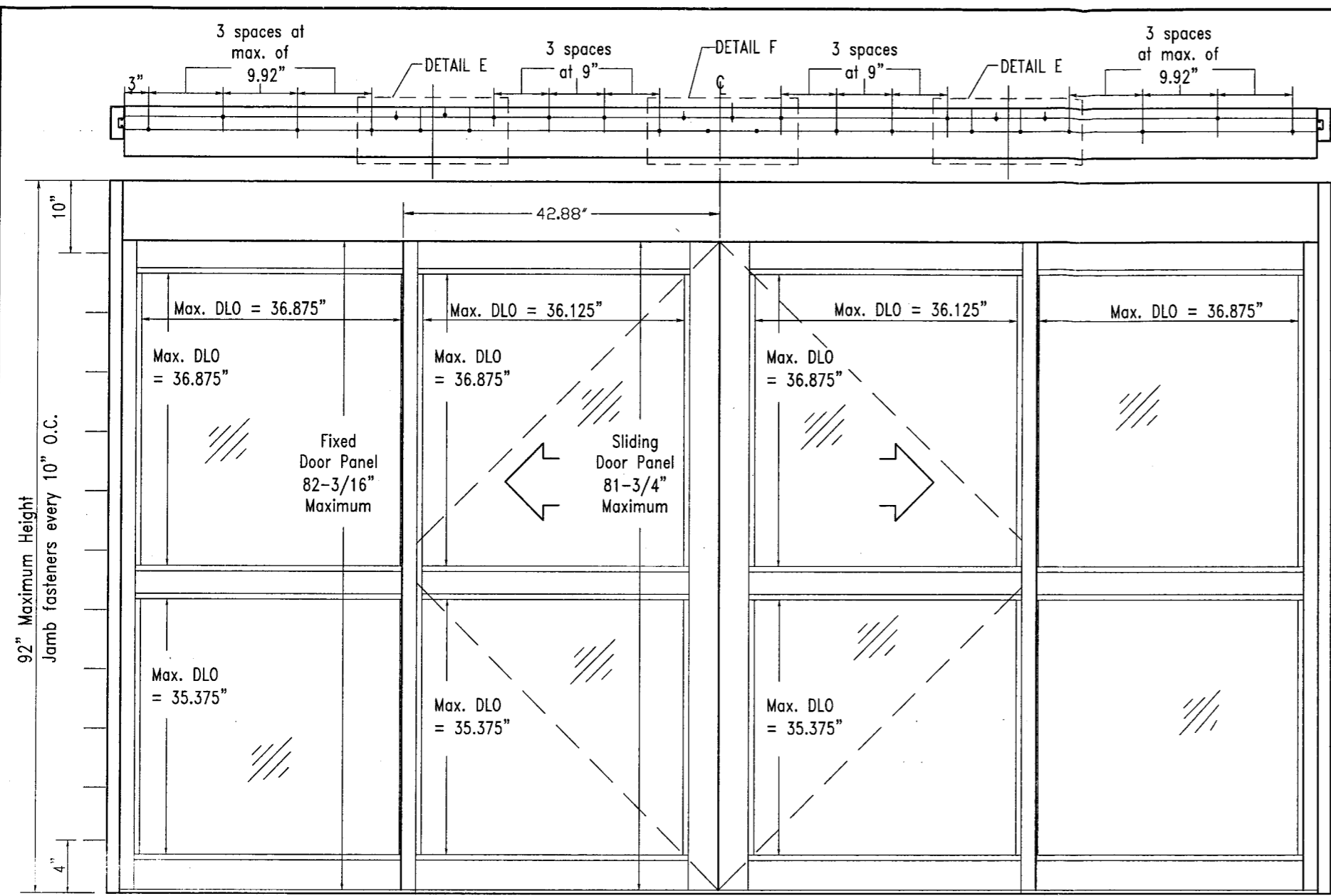
Product Control Examiner

NOA No 08-0528.01

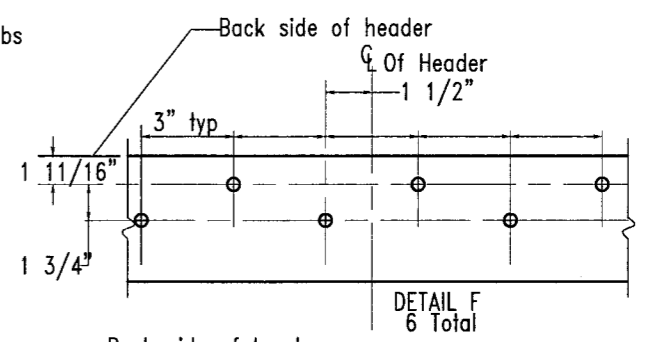
Expiration Date: October 09, 2013

Approval Date: October 09, 2008





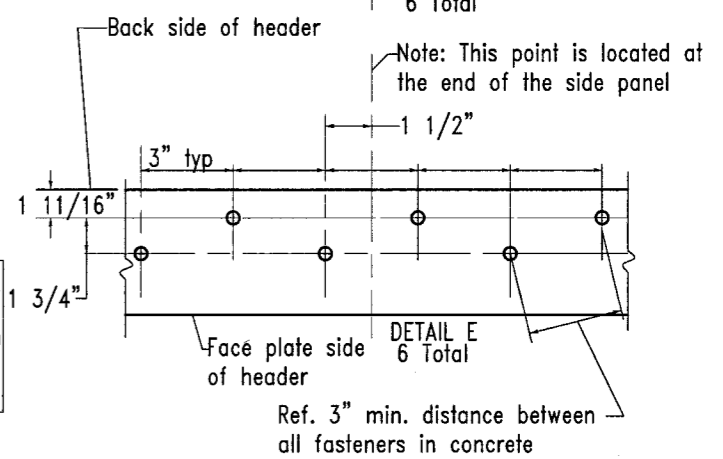
For wood substrate jambs orient as shown here



TYPE 110 Header

The frame must be shimmed with a type of shim complying with the Florida Building Code and is capable of resisting the frame's rotation-1/4" thk. Max

The allowable 4/3 increase stress factor for wind loads was used in the wood anchor calculations only for determining the minimum required anchor quantities shown on these drawings



HEADER

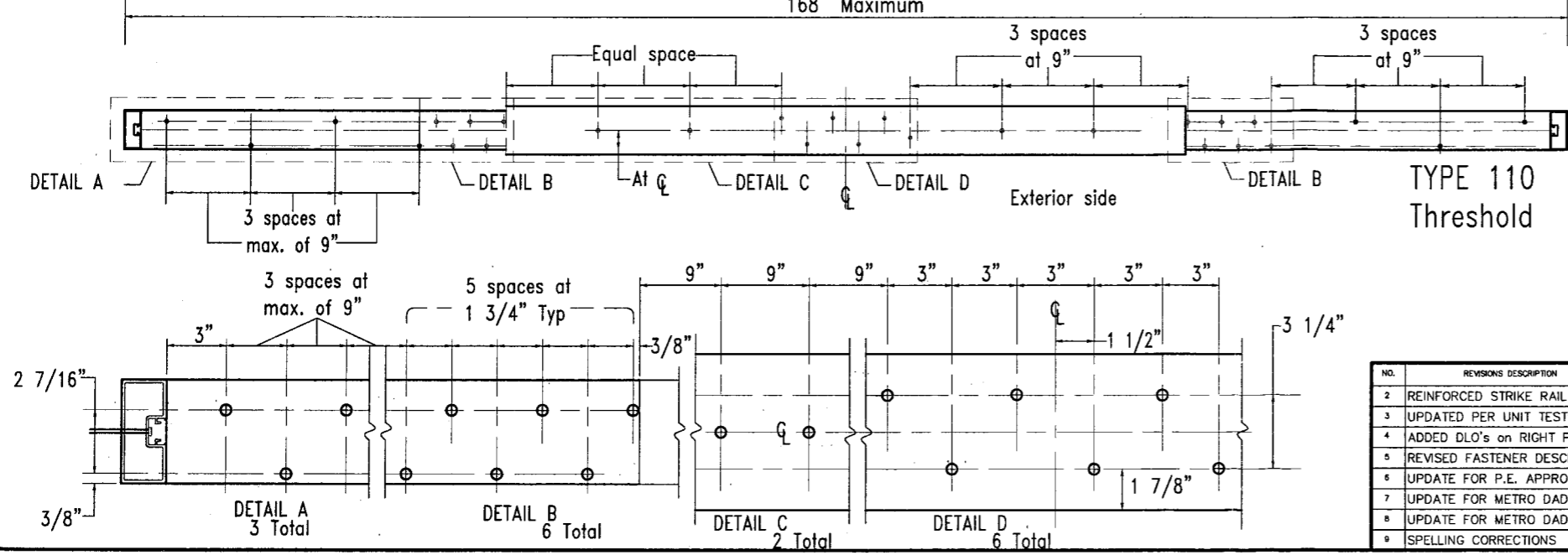
Steel (1/4" Thick, Fy=36 KSI) - INTERCORP #14 Steel HWH Self-Drilling Screw, 0.625" Min. Edge Distance  
 Aluminum(0.125" Thick Min./6063-T5) - 1/4"-14 HWH Sheetmetal Screw, 1" Min. Edge Distance.

JAMBS

Steel (1/4" Thick, Fy=36 KSI) - ITW TEKS SCREW #14-20, HWH w/WINGS Self-Drilling Screw 0.625" Minimum Edge Distance  
 Concrete(3000 PSI) - BUILDEX TAPCON 1/4" HWH Concrete Screw/Anchor, 2.0" Embed, 2.5" Min. Edge Distance  
 Masonry(Solid CMU Block) - BUILDEX TAPCON 1/4" HWH Concrete Screw/Anchor, 2.0" Embed, 2.5" Min. Edge Distance  
 Aluminum(0.125" Thick Minimum/6063-T5) - 1/4"-14 HWH Sheetmetal Screw, 1" Min. Edge Distance.  
 Wood(#2 SYP)-#14 x 4" Long Woodscrew or 1/4" x 4" Long Lag Bolt - Grade 5, 2.75" Minimum Penetration, 1" Minimum Edge Distance.

THRESHOLD

Steel (1/4" Thick, Fy=36 KSI)- ITW TEKS SCREW #14-20 PFH w/Wings Self-Drilling Screw, 0.625" Minimum Edge Distance  
 Concrete(3000 PSI)- BUILDEX TAPCON 1/4" Concrete Screw 2.0" Embed, 2.5" Minimum Edge Distance  
 Aluminum(0.125" Thick Minimum/6063-T5) - 1/4"-14 FH Sheetmetal Screw, 1" Minimum Edge Distance



2001/110 Non-Impact Slide

NO.	REVISIONS DESCRIPTION	DATE	APPROVED
2	REINFORCED STRIKE RAIL	08/13/07	CONTRACTOR:
3	UPDATED PER UNIT TESTED	12/18/07	SENER 2001/110      TYPE "0-SX-SX-0", "0-SX" & "SX-0"
4	ADDED DLO's on RIGHT PANELS	03/04/08	SENER NARROW      FINISH: --
5	REVISED FASTENER DESCRIPTION	03/07/08	ACTIVATION:
6	UPDATE FOR P.E. APPROVAL	7/14/08	
7	UPDATE FOR METRO DADE	7/21/08	
8	UPDATE FOR METRO DADE ENG.	08/19/08	
9	SPELLING CORRECTIONS	9/9/08	

Bi-Part Fastener Locations  
Dwg. No. 110906

*John E. Scates*  
9/9/08

John E. Scates, P.E.  
FL PE# 51737  
3121 Fairgate Dr.  
Carrollton, TX 75007

Approved as complying with the Florida Building Code  
 Date OCT 09, 2008  
 NOA# 08-05 28-01  
 Miami Dade Product Control  
 Division  
 By J. Sheryl L. Chanda

A DIVISION OF OVERHEAD DOOR CORPORATION  
 4242 BALDWIN BOULEVARD  
 CORPUS CHRISTI, TEXAS 78405-3399  
 361-888-5591 1-800-531-3111  
 FAX: 361-888-6610, 1-800-531-3108  
 http://www.hortondors.com

**Horton**  
A U T O M A T I C S

METRO-DADE

LOCATION:

DISTRIB:

DWN: LRod      P.O. #      SHEET 2 of 4  
 CHK: J. LACKEY      DATE 11/07/06

ITEM #	HORTON PART NUMBER	DESCRIPTION
1	C03600.0005	ALUMINUM EXTRUSION: HEADER
2	C03601.0002	ALUMINUM EXTRUSION: FACEPLATE
3	C00358.000R	ALUMINUM EXTRUSION: ASTRAGAL
4	C00314.0000	ALUMINUM EXTRUSION: INTERLOCK TOP
5	C00327.0000	ALUMINUM EXTRUSION: INTERLOCK LOWER
6	C00337.000R	ALUMINUM EXTRUSION: TOP RAIL & MUNTIN
7	C00338.000R	ALUMINUM EXTRUSION: GLASS STOP
8	C00336.0001	ALUMINUM EXTRUSION: BOTTOM RAIL
9	C00325.0002	ALUMINUM EXTRUSION: BOTTOM RAIL
10	C00315.0000	ALUMINUM EXTRUSION: TRACK FILLER
11	C00330.0001	ALUMINUM EXTRUSION: BOTTOM GUIDE
12	C00386.0001	ALUMINUM EXTRUSION: ADAPTOR
13	C02801.0000	ALUMINUM EXTRUSION: TOP RAIL
14	C02899.0002	ALUMINUM EXTRUSION: CORNER BLOCK (USED AS REINFORCEMENT)
15	C00390.0000	ALUMINUM EXTRUSION: THRESHOLD 7"
16	C00351.0000	ALUMINUM EXTRUSION: JAMB TUBE 4" X 1-3/4" W/ POCKET
17	C00335.000R	ALUMINUM EXTRUSION: VERTICAL RAIL
18	C00363.0000	ALUMINUM EXTRUSION: VERTICAL RAIL
19	C00818.000R	BAR TORSION (SERVES AS SLIDE PANEL TOP PIVOT)
20	C00524.00FL	WEATHERSEAL BRUSH (FELTON #490621)
21	C00350.0000	NOSING SEAL SCHLEGEL #1104-5101
22	C00397.0000	ADAPTER FOR C00389.01FL
23	C00293.0000	WEATHERSEAL BRUSH SCHLEGEL #8430-5016-7
24	C00454.0000	LOCK, MAX SECURITY ADAMS RITE MS1850S w/ ADAMS RITE 4015 HEADER BOLT
25	C00463.0000	THUMBTURN ADAMS RITE 4066
26	C02098.0000	SECURITY POST; 1/2" O.D. X 3/4" LG. x.083" WALL ALUM. TUBE (PLACED AT 24" & 48" ABOVE FINISHED FLOOR)
27	C00883.0000	3/8" HEX BOLT ADAMS RITE 4015 EXTENDING INTO HEAD AND SILL 1/2"
28	C00843.01FL	BOTTOM GUIDE DOOR MOUNTED
29	C00844.01FL	BOTTOM GUIDE DOOR MOUNTED
30	C03638.0000	HEADER & FACEPLATE SUPPORT
31	C00371.000R	WEATHERSTRIP; PANEL TO JAMB
	C00664.0001	#8 X 3/4 FHMS
33	C09653.0000	#10 X 3/4" FHMS(NOT USED)
34	C00404.0000	1/4-20 LOCKNUT
35	C00417.0000	#14 X 1-1/2 HWSMS
36	C00449.0000	#10-24 X 1" FHMS
37	C03682.0006	DRIVE WHEEL ASSEMBLY
38	C03681.0001	IDLER ASSEMBLY
39	C08151.0000	1/4-20 X 1" FHMS
40	C08150.0000	1/4-20 X 3/4 HHMB
41	C00537.000R	CORNER BLOCK
42	C09490.0001	CORNER BLOCK
43	C00536.0001	CORNER BLOCK
44	C09582.0002	CORNER BLOCK
45	C00341.0001	VINYL GLAZING BULB
46	C00289.0000	TRACK CAP
47	C00389.01FL	INTERLOCK SEAL SCHLEGEL #7595-6011-0
48	MI 0344.0000	REINFORCING BACKUP TUBE; 1 1/4" X 1 1/4" X 1/8" A36, FULL LENGTH OF VERT.RAIL
49	C00437.000A/B	#10-24 x 1/2 FHMS LESS THAN 10" APART (STAGGERED)
50	C00353.0000	COVER; RECESS - JAMB
51	C00437.000A/B	#10-24 x 1/2 FHMS
52	NPN	GLAZING - DOW CORNING #995(NOT USED)
53	C0538.000R	BACKUP PLATE; CRS

2001/110 Non-Impact Slide

NO.	REVISIONS DESCRIPTION	DATE	ARCHITECT
1	RELEASE FOR P.E. APPROVAL	01/23/07	
2	REINFORCED STRIKE RAIL	08/13/07	
3	UPDATED PER UNIT TESTED	12/18/07	
4	ADDED ITEMS 51 & 52	03/14/08	
5	REVISED PER METRO DADE ENGR	07/14/08	
6	REVISED PER METRO DADE ENGR	08/18/08	
7	UPDATE PER P.E. REQUEST	9/9/08	
8			

Bill of Materials  
Dwg. No. 110906

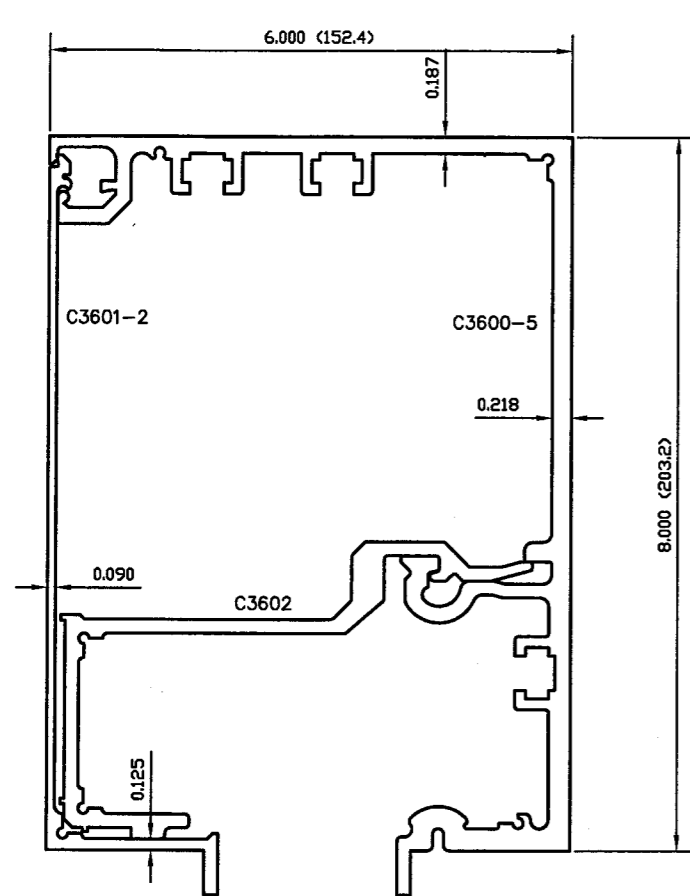
*John E. Scates*  
9/9/08  
John E. Scates, P.E.  
FL PE# 51737  
3121 Fairgate Dr.  
Carrollton, TX 75007

Approved as complying with the  
Florida Building Code  
Date 09-09-2008  
NOA# 08-0528-01  
Miami Dade Product Control  
Division  
By Isaac L. Clark

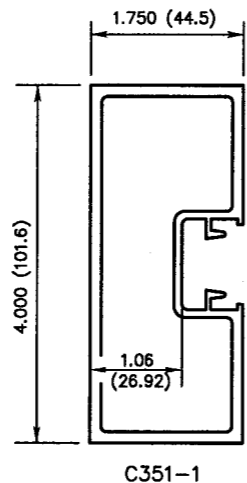
A DIVISION OF OVERHEAD DOOR CORP.  
4242 BALDWIN BOULEVARD  
CORPUS CHRISTI, TEXAS 78405-3399  
361-888-5591 1-800-531-3111  
AUTOMATICS FAX: 361-888-6510, 1-800-531-3108

**Horton**

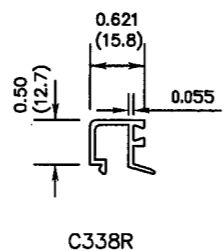
JOB METRO-DADE  
LOCATION:  
DISTRIBUTOR:  
DWG: LRod P.O. # SHEET 3 of 4  
ENR: J. LACKEY DATE: 11/07/06



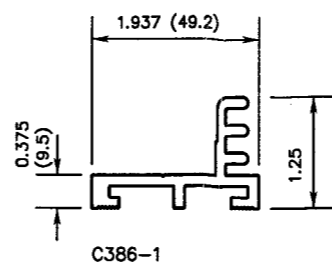
6" X 8"  
(152.4) (203.2)  
ASSEMBLED



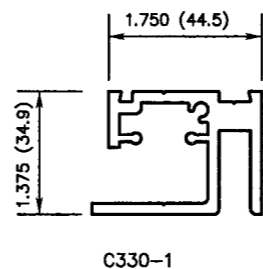
C351-1



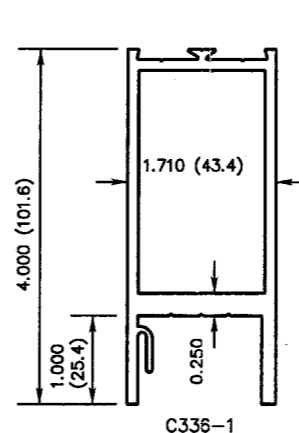
C338R



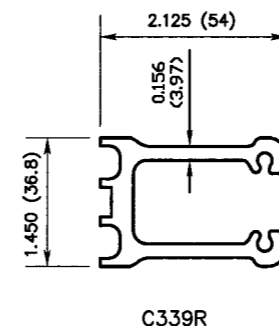
C386-1



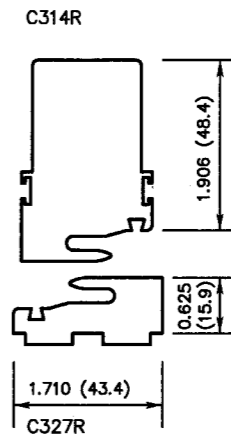
C330-1



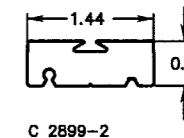
C336-1



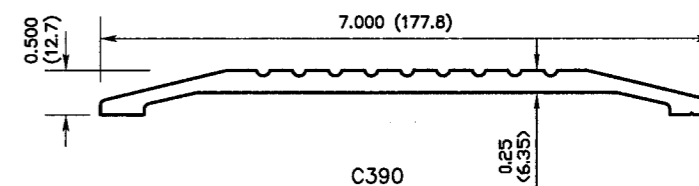
C339R



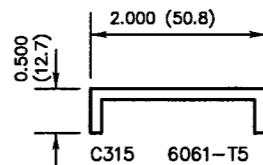
C327R



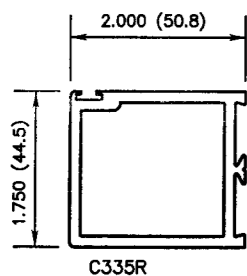
C 2899-2



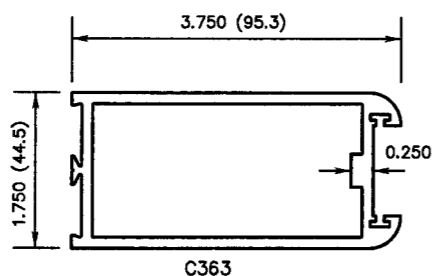
C390



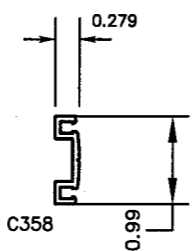
C315 6061-T5



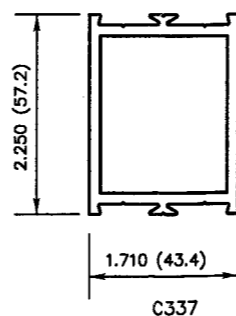
C335R



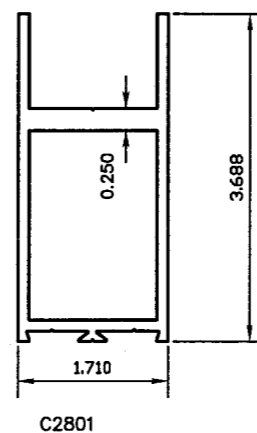
C363



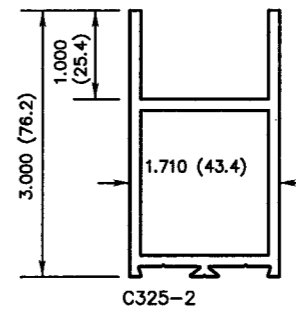
C358



C337



C2801



C325-2

2001/110 Non-Impact Slide

TYPICAL THICKNESS = 0.125" UNLESS OTHERWISE NOTED.

ALL EXTRUSIONS ARE 6063-T5 UNLESS OTHERWISE NOTED

*John E. Scates*  
John E. Scates, P.E.  
FL PE# 51737  
3121 Fairgate Dr.  
Carrollton, TX 75007

Approved as conforming with the  
Florida Building Code  
Date OCT 09, 2008  
NOA# 08-0528-01  
Miami Dade Product Control  
Division  
By Shag I. Chaudhry

NO.	REVISIONS DESCRIPTION	DATE	ARCHITECT:
1	RELEASE FOR P.E. APPROVAL	01/23/07	
2	REINFORCED STRIKE RAIL	08/13/07	
3	UPDATED PER UNIT TESTED	12/18/07	
4	ADDED TOP HEADER PLATE DIM.	03/06/08	
5	UPDATED FOR P.E. APPROVAL	07/14/08	
6	UPDATED FOR METRO DADE ENG.	08/18/08	
7	UPDATED PER P.E. REQUEST	9/9/08	
8			

CONTRACTOR:	SERIES: 2001/110	TYPE: "O-SX-SX-0" & "O-SX"
STYLE: NARROW	FINISH:	
ACTUATION:		
Extrusion chart Dwg. No. 110906		

A DIVISION OF OVERHEAD DOOR CORPORATION 4242 BALDWIN BOULEVARD CORPUS CHRISTI, TEXAS 78405-3999 361-888-5591 1-800-531-3111 FAX: 361-888-6510, 1-800-531-3108 http://www.hortondors.com		
<b>Horton</b> AUTOMATICS		
JOB: METRO-DADE		
LOCATION:		
DISTRIBUTOR:		
DWG: LRod	P.O. #	SHEET: 4 of 4
CHK: J. LACKEY	DATE: 11/07/08	