



MIAMI-DADE COUNTY
BUILDING CODE COMPLIANCE OFFICE (BCCO)
PRODUCT CONTROL DIVISION

MIAMI-DADE COUNTY, FLORIDA
 METRO-DADE FLAGLER BUILDING
 140 WEST FLAGLER STREET, SUITE 1603
 MIAMI, FLORIDA 33130-1563
 (305) 375-2901 FAX (305) 372-6339

NOTICE OF ACCEPTANCE (NOA)

www.maimidade.gov/buildingcode

Alpine Overhead Doors, Inc.
8 Hulse Road
East Setauket, NY 11733

SCOPE: This NOA is being issued under the applicable rules and regulations governing the use of construction materials. The documentation submitted has been reviewed by Miami-Dade County Product Control Division and accepted by the Board of Rules and Appeals (BORA) to be used in Miami Dade County and other areas where allowed by the Authority Having Jurisdiction (AHJ).
 This NOA shall not be valid after the expiration date stated below. The Miami-Dade County Product Control Division (In Miami Dade County) and/or the AHJ (in areas other than Miami Dade County) reserve the right to have this product or material tested for quality assurance purposes. If this product or material fails to perform in the accepted manner, the manufacturer will incur the expense of such testing and the AHJ may immediately revoke, modify, or suspend the use of such product or material within their jurisdiction. BORA reserves the right to revoke this acceptance, if it is determined by Miami-Dade County Product Control Division that this product or material fails to meet the requirements of the applicable building code.
 This product is approved as described herein, and has been designed to comply with the Florida Building Code, including the High Velocity Hurricane Zone.

DESCRIPTION: Redi- Storm 16 "Rolling Steel Door"

APPROVAL DOCUMENT: Drawing No. ALP16, titled "Redi-Storm 16", sheets 1 2 &3, dated 06/08/08, prepared by Alpine Overhead Doors Inc. signed and sealed Felice P. Degiovanni, P.E., bearing the Miami-Dade County Product Control Approval stamp with the Notice of Acceptance number and approval date by the Miami-Dade County Product Control Division.

LIMITATION: This approval is for 22 Gauge Flat Slat type door only.

MISSILE IMPACT RATING: Large and Small Missile Impact Resistant

LABELING: Each unit shall bear a permanent label with the manufacturer's name or logo, city, state and following statement: "Miami-Dade County Product Control Approved", unless otherwise noted herein.

RENEWAL of this NOA shall be considered after a renewal application has been filed and there has been no change in the applicable building code negatively affecting the performance of this product.

TERMINATION of this NOA will occur after the expiration date or if there has been a revision or change in the materials, use, and/or manufacture of the product or process. Misuse of this NOA as an endorsement of any product, for sales, advertising or any other purposes shall automatically terminate this NOA. Failure to comply with any section of this NOA shall be cause for termination and removal of NOA.

ADVERTISEMENT: The NOA number preceded by the words Miami-Dade County, Florida, and followed by the expiration date may be displayed in advertising literature. If any portion of the NOA is displayed, then it shall be done in its entirety.

INSPECTION: A copy of this entire NOA shall be provided to the user by the manufacturer or its distributors and shall be available for inspection at the job site at the request of the Building Official. This NOA consists of this page 1 and evidence page E-1, as well as approval document mentioned above. The submitted documentation was reviewed by **Mohammed Iqbal Shaikh, P.E.**



MKS
 11/19/08

NOA No. 08-0805.15
Expiration Date: 12/11/2013
Approval Date: 12/11/ 2008

NOTICE OF ACCEPTANCE: EVIDENCE SUBMITTED

A. DRAWINGS

1. Drawing No. **ALP16**, titled "Redi-Storm 16", sheets 1, 2 & 3, dated 06/08/08, prepared by Alpine Overhead Doors Inc. signed and sealed Felice P. Degiovanni, P.E.

B. TESTS

1. Test report # ETC -07-1102-20195.0, dated 05/29/08 by ETC Laboratories for 1) Uniform Static Air Pressure Test, Loading per FBC, TAS 202, , 2) Large Missile Impact Test per FBC TAS 201 3) Cyclic Wind Pressure Loading per FBC, TAS 203, signed and sealed by Joseph L. Doldan, P.E.

C. CALCULATIONS

1. Structural analysis and anchor verification calculations, dated 6/9/8, prepared by Alpine Overhead Doors, Inc., signed and sealed by Felice P. Degiovanni P.E.

D. QUALITY ASSURANCE

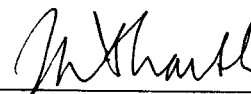
1. Miami Dade Building Code Compliance Office (BCCO).

E. MATERIAL CERTIFICATIONS

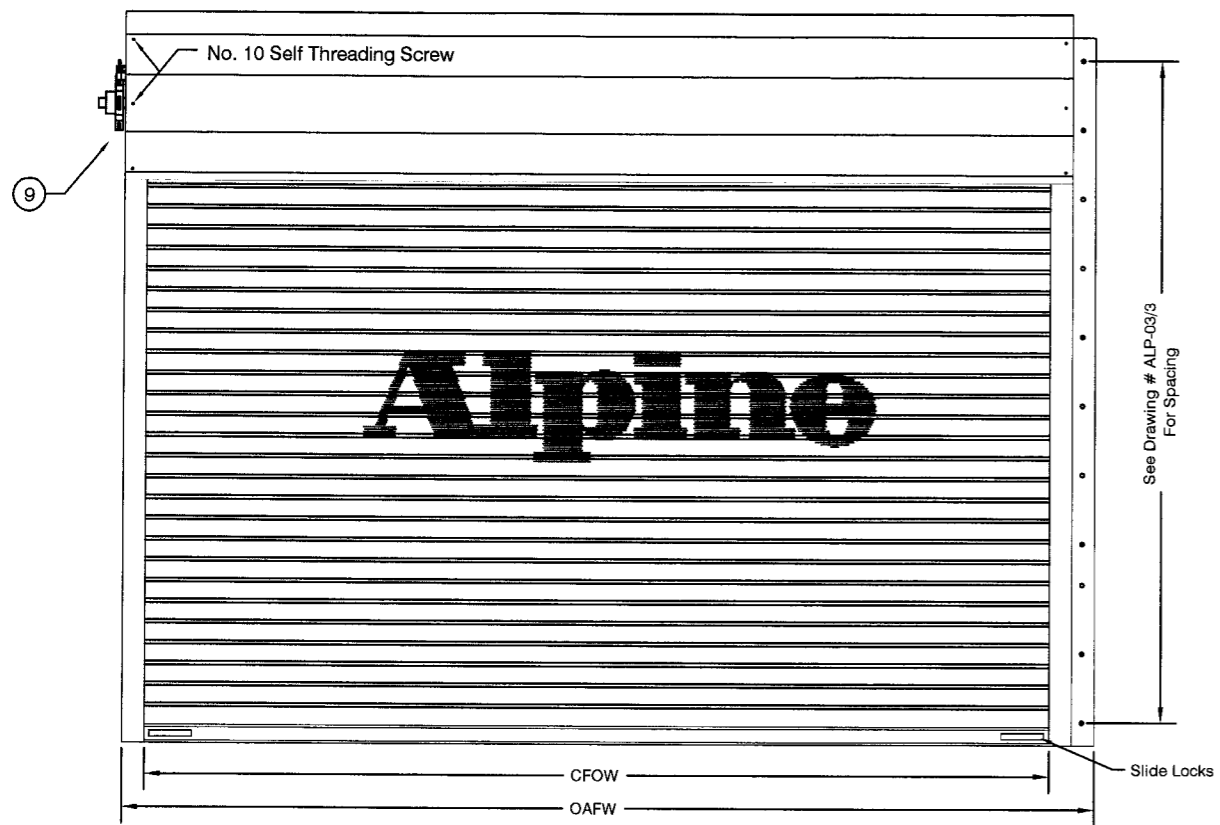
1. Test report # ETC -08-1102-21835 for Tensile Test per ASTM E 8-08,dared 10/08/08, signed and sealed by Joseph L. Doldan, P.E.

F. STATEMENTS

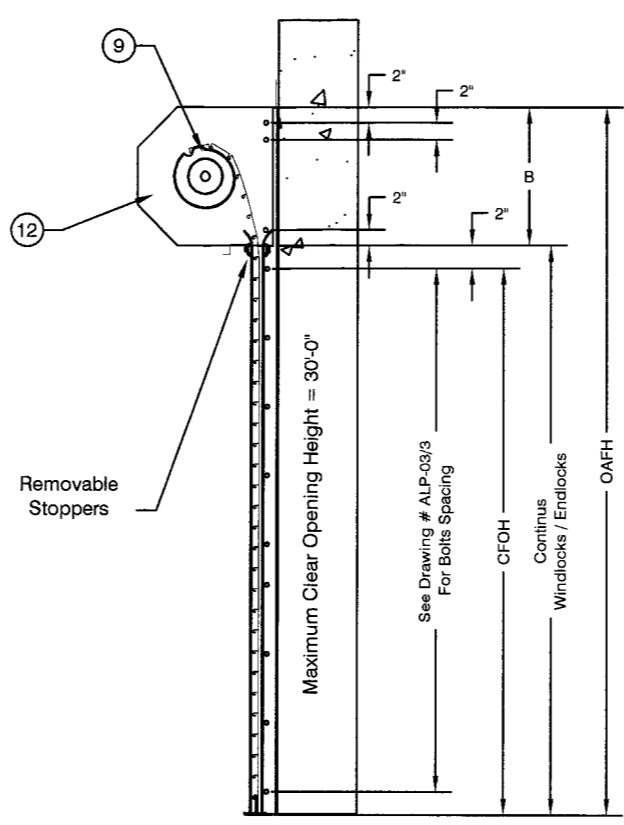
1. Statement letter of code compliance, dated 06/26/08, signed and sealed by Felice P. Degiovanni, P.E.
2. Statement letter of no financial interest, dated 06/26/08, signed and sealed by Felice P. Degiovanni, P.E.
3. Statement letter of test compliance, by by ETC Laboratories, dated 10/30/08, signed and sealed by Joseph L. Doldan, P.E.



Mohammed Iqbal Shaikh, P.E.
Sr. Building Code Compliance Specialist
NOA No. 08-0805.15
Expiration Date: 12/11/ 2013
Approval Date: 12/11/2008



COIL SIDE ELEVATION



VERTICAL SECTION

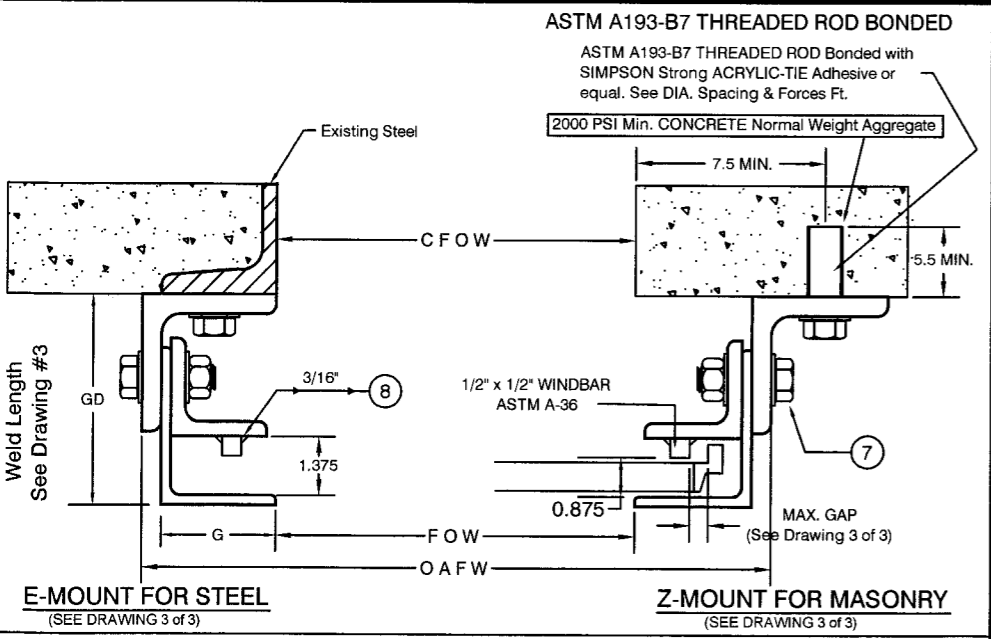
- NOTES:**
- This Door was designed according to the 2004 edition of the FLORIDA Building Code and 2005 and 2006 supplement.
 - Calculations on Positive (+) and Negative (-) design pressure are performed in accordance with ASCE 7-02 (minimum design loads for Buildings and other Structures).
 - The details and specifications shown herein represent the products tested for UNIFORM STATIC AIR PRESSURE in conformance with DADE COUNTY Protocols TAS 201, 202 & 203.
 Positive (+) Design Load = 60 PSF
 Negative (-) Design Load = 60 PSF
DESIGN PRESSURE RATING
+ / - 60 PSF
 - SLATS to be ASTM A653 Grade C with G-90 Galvanizing or Stainless Steel with Minimum Fy = 40 KSI
 - All STEEL ANGLES and WIND BAR to be Shop Primed.
 - WIND LOCKS to be Ductile IRON with Minimum Fy = 42 KSI.
 - All Assembly Bolts to be ASTM - A449 / SAE Grade 5 Or STAINLESS STEEL-304 Threads are Included in the SHEAR Plane.
 - All WELDING to be in Accordance with AWS Latest Edition and south Florida Building Code. Welding to be done by Welders Using 70xx Electrodes.
 - SPRING Counterbalance to be Housed in a STEEL PIPE of Diameter and WALL Thickness to Restrict Maximum Deflection of Diameter and WALL Thickness to Restrict maximum Deflection of 0.03" Per Foot of Door Width. Roll-on Mechanism not part of this approval must be certified by an independent certifying agent.
 - RIVETS for WIND LOCKS / END LOCKS are to be semi-Tubular 0.246/0.252 DIA 0.437 Mushroom head x 7/16", ASTM A-31.
 - DOOR is to be 24 Gauge ASTM - 525.
 - BRACKETS are STEEL Plates not Less than 3/16" Thick. BALL BEARING at Rotating support points. Bolted to mounting Angle, Supports Counterbalance Assembly and Forms end Enclosures sized to conform.

QTY	MK	CLEAR FRAME OPENING		OVERALL FRAME		FRAME OPENING		B BRACKET	G GUIDE	GD GUIDE DEPTH	OPER- ATION	DRIVE
		C F O WIDTH	C F O HEIGHT	O A F WIDTH	O A F HEIGHT	F O W IDTH	F O H EIGHT					
1		16'-0"	10'-0"	16'-6 3/4"	11'-6"	16'-0"	10'-0"	16"	3"	4 1/2"	Manual	
				(E Mount)								

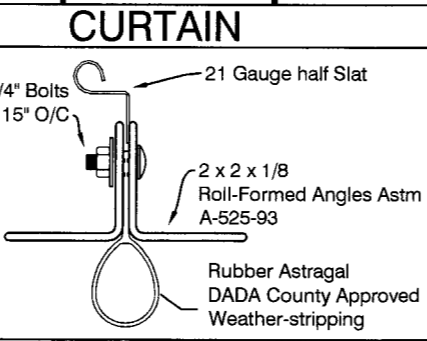
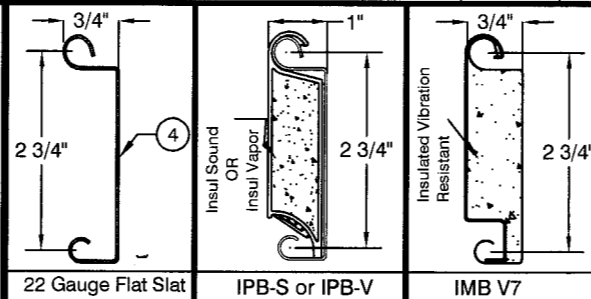
United States Patent Numbers: 5,657,805 - 5,419,386 or others may apply.
© Copyright 2008

MATERIAL

CURTAIN: 22 gage galvanized steel sheet roll formed 2 3/4" flat slat sections FINISH: Standard	HOOD: 24 gage galvanized steel sheet roll formed 2 3/4" flat slat sections FINISH: Standard
GUIDES: Designed using A-36 structural steel angles, 1/2" sq. stock for windbar FINISH: Standard	BOTTOM BAR: Two MATERIAL angles which extends into guides. equipped with vinyl weather-stripping FINISH: Standard



GUIDE SECTION



BOTTOM BAR

APPLICATION # 08-0805.15

REDI-STORM 16

F.P. DEGIOVANNI P.E.
41 FLANDERS RD.
MOUNTAUK, N.Y. 11954
FL. LICENSE NO. 55071

DATE
DRAWN BY
APPR. BY
DATE 6/8/08
DRAWING # ALP16-1 REV.

FOR DADE COUNTY USE ONLY

Approved as complying with the Florida Building Code
Date 12/11/08
NOA# D-2-2205-15
Miami Dade Product Control
Division
By *M. X. Shah*

DRAWN CHECK

REVISION RECORD

DATE NO.

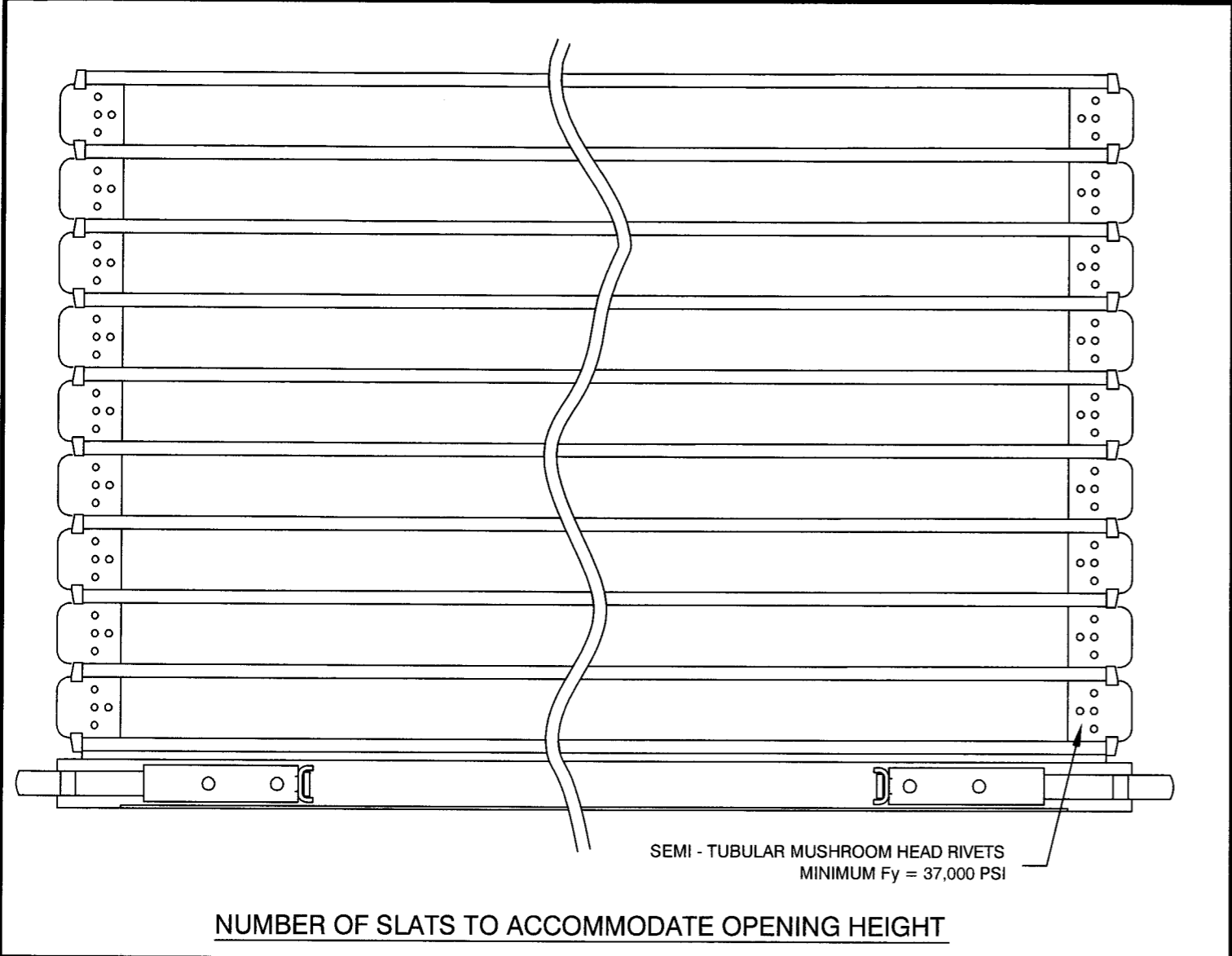
REDI-STORM™
HURRICANE PROTECTION DEVICE
APPROVED MEANS OF EGRESS

ALPINE
OVERHEAD DOORS, INC.
8 HULSE RD. E. SETAUKET, N.Y. 11733
TEL: (631)473-9300 FAX: (631)642-0800
© COPYRIGHT 2008

PROJECT PROJECT

CONTRACT# / P.O.#
Computer Generated Drawing

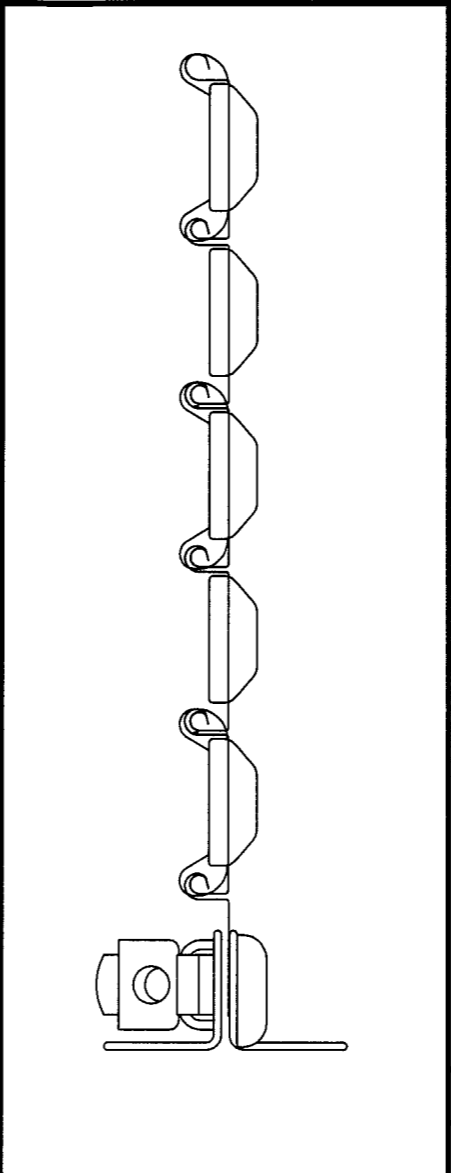
FILE NAME:
F:\Fs1_Sys1\Dwg\Redistorm\16\ALP16-2.dwg



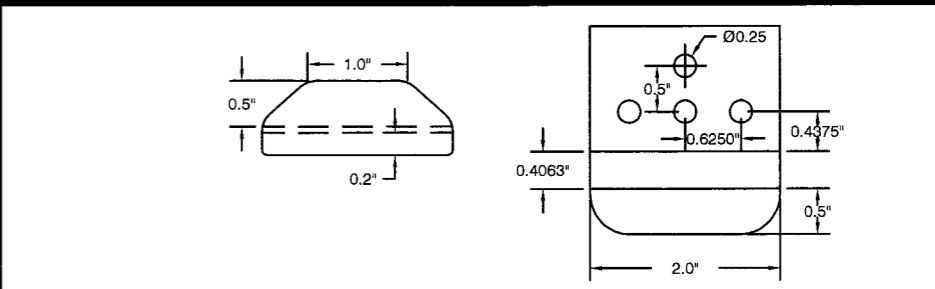
SEMI - TUBULAR MUSHROOM HEAD RIVETS
MINIMUM Fy = 37,000 PSI

NUMBER OF SLATS TO ACCOMMODATE OPENING HEIGHT

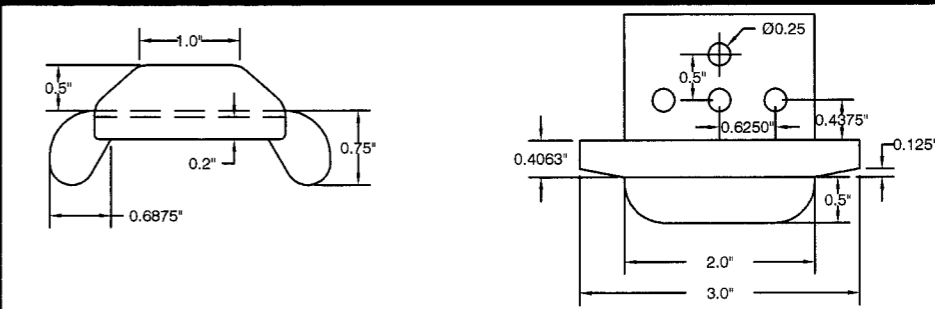
COIL SIDE ELEVATION



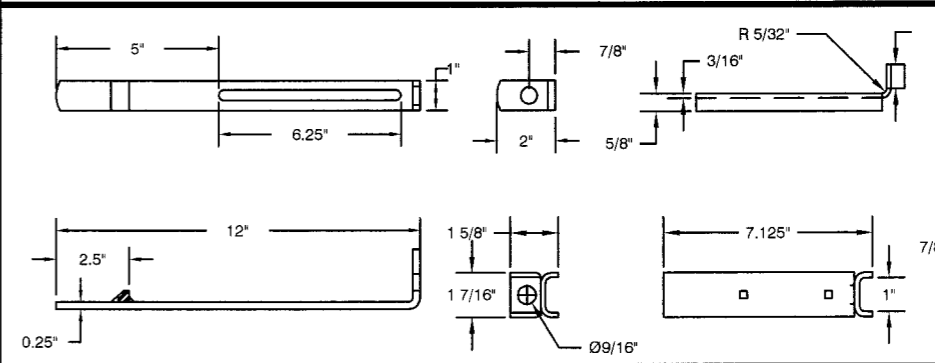
VERTICAL SECTION



WINDLOCK

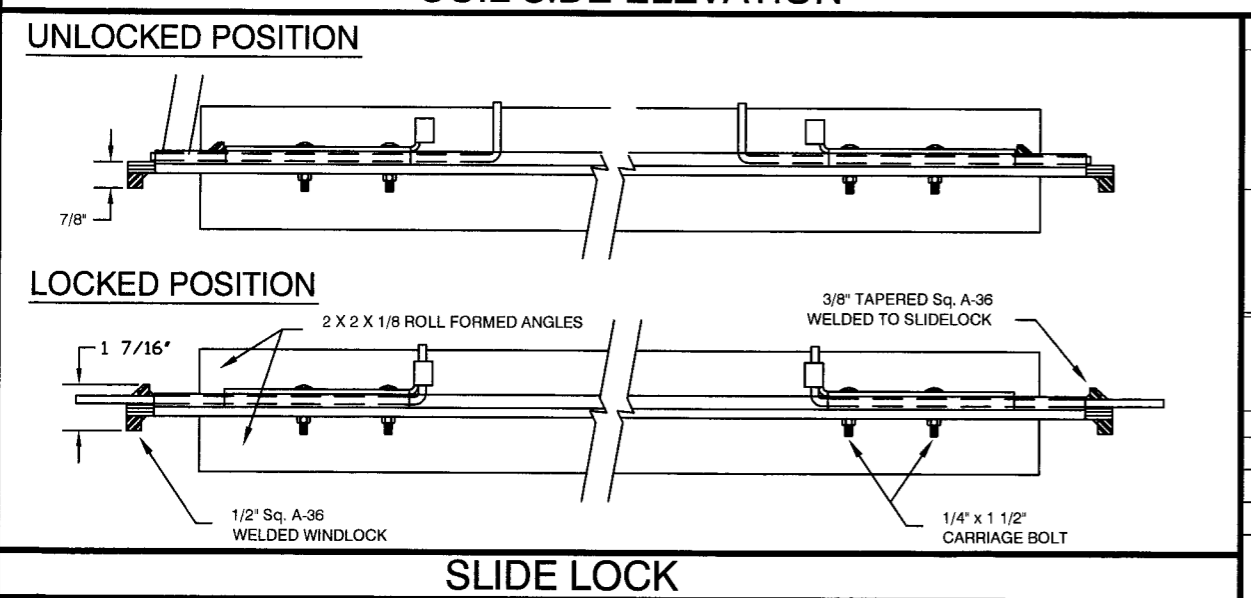


WINDLOCK / ENDLOCK



PATENT PENDING

United States Patent Numbers: 5,657,805 - 5,419,386 or others may apply.
© Copyright 2008



SLIDE LOCK

APPLICATION # 08-0805.15
REDI-STORM
16
F.P. DEGIOVANNI P.E.
41 FLANDERS RD.
MOUNTAUK, N.Y. 11954
FL. LICENSE NO. 55071
DATE
DRAWN BY
APPR. BY
DATE 6/8/08
DRAWING # ALP16-2 REV.

FOR DADE COUNTY USE ONLY
Felice Degiovanni
Professional Engineer Seal

Approved as complying with the Florida Building Code
Date 12/11/08
By M. Mark
Miami Dade Product Control Division

DATE	NO.	REVISION RECORD	DRAWN	CHECK

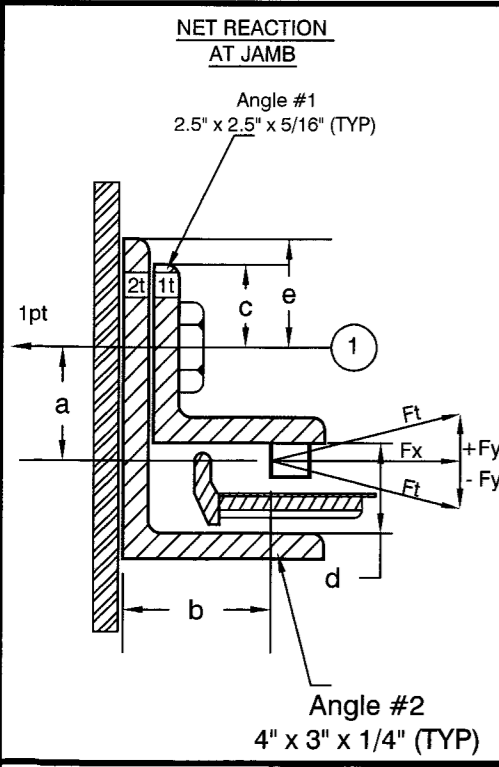
REDI-STORM™
HURRICANE PROTECTION DEVICE
APPROVED MEANS OF EGRESS

ADOLINO
OVERHEAD DOORS, INC.
8 HULSE RD. E. SETAUKET, N.Y. 11733
TEL: (631)473-9300 FAX: (631)642-0800
© COPYRIGHT 2008

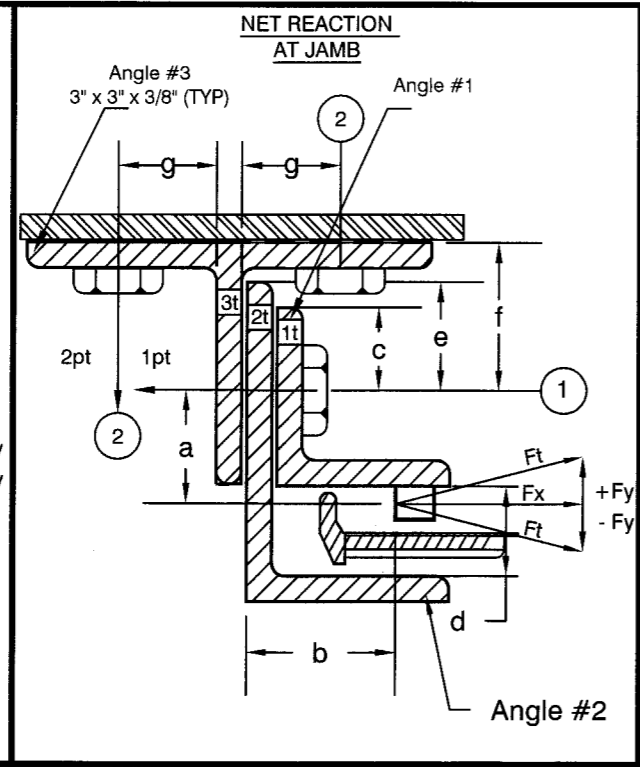
F, E, Z, Zc & Ew MOUNTS FOR MOUNTING BETWEEN STEEL JAMBS SUITABLE TO ACCEPT REACTION FORCES

TYPE MOUNT	DOOR WIDTH (ft-in)	SLAT THICK (ft-in)	MOUNTING DIMENSIONS (in) (See Mounting Conditions)								MAXIMUM SLIP (in)	D = BOLT DIA., S = BOLT SPACING (in) Pt = BOLT TENSION FORCE, Ps = BOLT SHEAR FORCE								DEFL. (in)	W/BAR THICK (in)	RIVETS NO/DIA.	WELD LEN. (in)	NET REACT FORCE / ft.	
			a	b	c	d	e	f	g	1D (in)		1S (in)	1Pt (lbs)	1Pv (lbs)	2D (in)	2S (in)	2Pt (lbs)	2Pv (lbs)	Fx					Fy	
																									Fx
F	16'-0"	0.0280"	1.6875	1.6875	1.0625	1.375	0.9375	N/A	N/A	0.5	0.5	12	6721	418	N/A	N/A	N/A	N/A	8.54	0.5	4 / 0.25	3	2379	418	
	15'-0"	0.0280"	1.6875	1.625	1.0625	1.375	0.9375	N/A	N/A	0.4375	0.5	13	6870	415	N/A	N/A	N/A	N/A	7.77	0.5	4 / 0.25	3	2259	383	
	14'-0"	0.0280"	1.6875	1.557	1.0625	1.375	0.9375	N/A	N/A	0.370	0.5	13	6518	377	N/A	N/A	N/A	N/A	6.91	0.5	4 / 0.25	3	2159	348	
	13'-0"	0.0280"	1.6875	1.469	1.0625	1.375	0.9375	N/A	N/A	0.281	0.5	14	6985	369	N/A	N/A	N/A	N/A	5.81	0.5	4 / 0.25	3	2173	316	
	12'-0"	0.0280"	1.375	1.406	0.875	1.375	0.75	N/A	N/A	0.219	0.375	8	3844	188	N/A	N/A	N/A	N/A	4.93	0.5	4 / 0.25	3	2109	282	
E	16'-0"	0.0280"	1.6875	1.6875	1.0625	1.375	0.9375	1.75	1.375	0.5	0.5	12	6669	415	0.625	12	6801	2360	8.53	0.5	4 / 0.25	3	2360	415	
	15'-0"	0.0280"	1.6875	1.62	1.0625	1.375	0.9375	1.75	1.375	0.4375	0.5	13	6811	412	0.625	13	6999	2425	7.75	0.5	4 / 0.25	3	2239	380	
	14'-0"	0.0280"	1.6875	1.547	1.0625	1.375	0.9375	1.75	1.375	0.360	0.5	13	6557	375	0.625	13	6803	2356	6.8	0.5	4 / 0.25	3	2175	347	
	13'-0"	0.0280"	1.6875	1.469	1.0625	1.375	0.9375	1.75	1.375	0.281	0.375	8	3947	209	0.625	13	6715	2328	5.77	0.5	4 / 0.25	3	2149	314	
	12'-0"	0.0280"	1.375	1.406	0.875	1.375	0.75	1.50	1.375	0.219	0.375	8	3795	186	0.625	14	6996	2429	4.9	0.5	4 / 0.25	3	2082	279	
Z	16'-0"	0.0280"	1.6875	1.6875	1.0625	1.375	0.875	1.4375	2.0	0.5	0.5	12	6721	418	0.625	16	4568	3171	8.54	0.5	4 / 0.25	3	2379	418	
	15'-0"	0.0280"	1.6875	1.625	1.0625	1.375	0.875	1.4375	2.0	0.4375	0.5	13	6870	415	0.5	11	2964	2070	7.74	0.5	4 / 0.25	3	2259	383	
	14'-0"	0.0280"	1.6875	1.5625	1.0625	1.375	0.875	1.4375	2.0	0.375	0.5	13	6518	377	0.5	11	2813	1979	6.91	0.5	4 / 0.25	3	2159	348	
	13'-0"	0.0280"	1.6875	1.469	1.0625	1.375	0.875	1.4375	2.0	0.281	0.5	14	6985	369	0.5	11	2800	1992	5.79	0.5	4 / 0.25	3	2173	316	
	12'-0"	0.0280"	1.375	1.406	0.875	1.375	1.25	1.25	2.0	0.219	0.375	8	3844	188	0.5	12	2942	2109	4.92	0.5	4 / 0.25	3	2109	282	
Zc	16'-0"	0.0280"	1.6875	1.750	1.0625	1.375	0.875	1.4375	2.0	0.5625	0.5	12	6645	429	0.625	9.625	2716	1872	9.2	0.5	4 / 0.25	3	2333	429	
	15'-0"	0.0280"	1.6875	1.625	1.0625	1.375	0.875	1.4375	2.0	0.4375	0.5	12	6705	400	0.625	9.625	2742	1917	7.87	0.5	4 / 0.25	3	2391	400	
	14'-0"	0.0280"	1.6875	1.5625	1.0625	1.375	0.875	1.4375	2.0	0.375	0.5	13	6889	396	0.625	9.625	2602	1831	7.05	0.5	4 / 0.25	3	2283	365	
	13'-0"	0.0280"	1.6875	1.50	1.0625	1.375	0.875	1.4375	2.0	0.3125	0.5	13	6542	358	0.625	9.625	2471	1751	6.2	0.5	4 / 0.25	3	2183	330	
	12'-0"	0.0280"	1.375	1.406	0.875	1.375	1.25	1.25	2.0	0.25	0.5	15	6950	358	0.5	7.5	1733	1265	5.3	0.5	4 / 0.25	3	2025	286	
Ew	16'-0"	0.0280"	1.6875	1.6875	1.0625	1.375	0.9375	1.625	N/A	0.5	0.5	12	6704	417	2	12	2802	2372	8.57	0.5	4 / 0.25	3	2372	417	
	15'-0"	0.0280"	1.6875	1.625	1.0625	1.375	0.9375	1.625	N/A	0.4375	0.5	13	6850	414	2	12	2662	2252	7.76	0.5	4 / 0.25	3	2252	382	
	14'-0"	0.0280"	1.6875	1.5625	1.0625	1.375	0.9375	1.625	N/A	0.375	0.5	13	6599	377	2	12	2586	2189	6.81	0.5	4 / 0.25	3	2189	348	
	13'-0"	0.0280"	1.6875	1.469	1.0625	1.375	0.9375	1.625	N/A	0.281	0.5	14	6959	368	2	12	2551	2165	5.80	0.5	4 / 0.25	3	2165	315	
	12'-0"	0.0280"	1.375	1.4375	0.875	1.375	0.75	1.5	N/A	0.219	0.375	8	3827	187	2	12	2468	2100	4.91	0.5	4 / 0.25	3	2100	281	

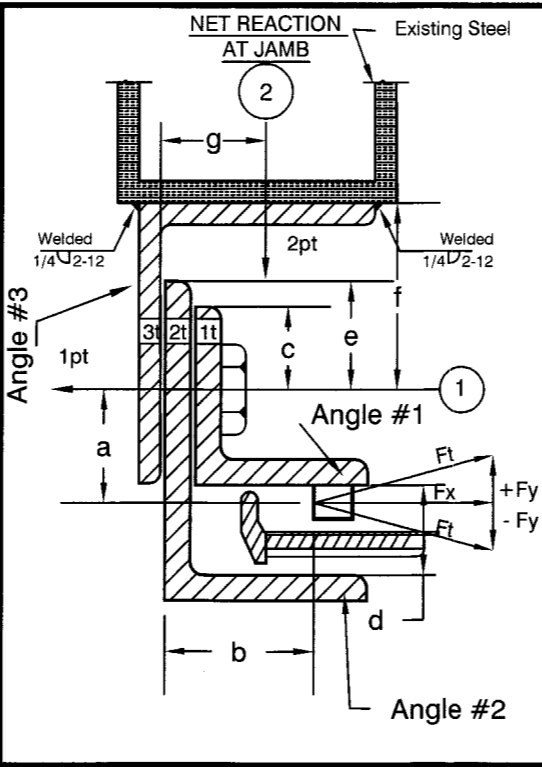
United States Patent Numbers: 5,657,805 - 5,419,386 or others may apply.
© Copyright 2008



F-MOUNT



E, Z OR Zc-MOUNT



Ew-MOUNT

NOTES:

- The following calculation are based on actual testing result on the Slat Deflection curve assuming the shape of a Catenary as soon as the Windlocks Engage the Guides. The Windlocks limit the Slat Deflection and Bending Stress and are designed to engage Guides prior to the Slats attaining maximum allowable deflections and Bending Stress without Restraints.
- It shall be the responsibility of the Contractor / Owner to verify that the structure is designed to support forces Fx and Fy at both Jamb.
- Bolts to be as per ASTM A449 Except for Mounting to Concrete Jamb which shall be ASTM 193-B7 threaded rod bonded with Simpson Strong-tie Adhesive Anchor System or equal. Special Inspection required for Concrete Anchor Systems.

DESIGN PRESSURE RATING
+ / - 60 PSF

APPLICATION # 08-0805.15

REDI-STORM 16

F.P. DEGIOVANNI P.E.
41 FLANDERS RD.
MOUNTAUK, N.Y. 11954
FL. LICENSE NO. 55071

DATE
DRAWN BY
APPR. BY
DATE 6/8/08
DRAWING # ALP16-3

FOR DADE COUNTY USE ONLY

Approved as complying with the Florida Building Code
Date 12/11/08
NOAH 08-0805.15
Miami Dade Product Control
By *M. K. ...*

Teles P. De Giovanni

DRAWN CHECK

REVISION RECORD

DATE NO.

REDI-STORM™

HURRICANE PROTECTION DEVICE
APPROVED MEANS OF EGRESS

ADP

OVERHEAD DOORS, INC.
8 HULSE RD. E. SETAUKET, N.Y. 11733
TEL: (631)473-9300 FAX: (631)642-0800
© COPYRIGHT 2008