

MIAMI-DADE TRANSIT CAPITAL IMPROVEMENT PROJECTS

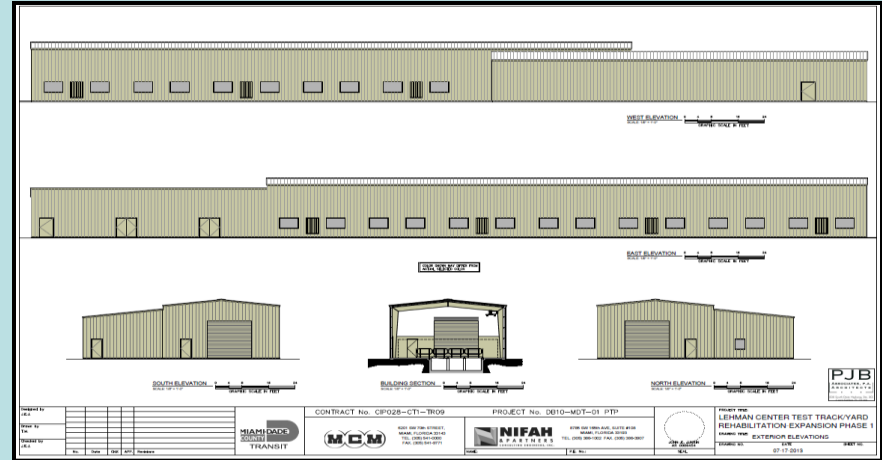


Citizen's Independent Transportation Trust
June 19, 2014

PROJECTS IN CONSTRUCTION OR UNDER IMPLEMENTATION

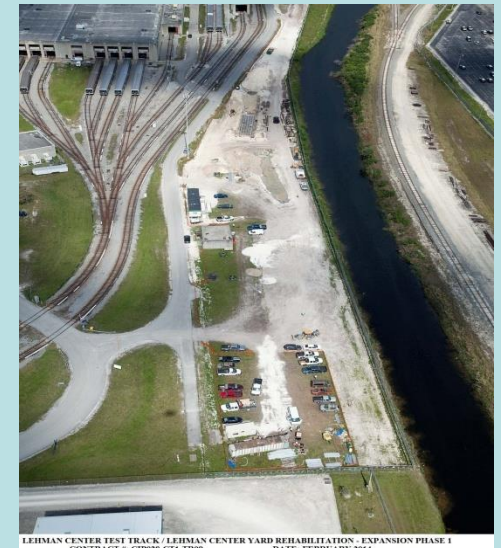
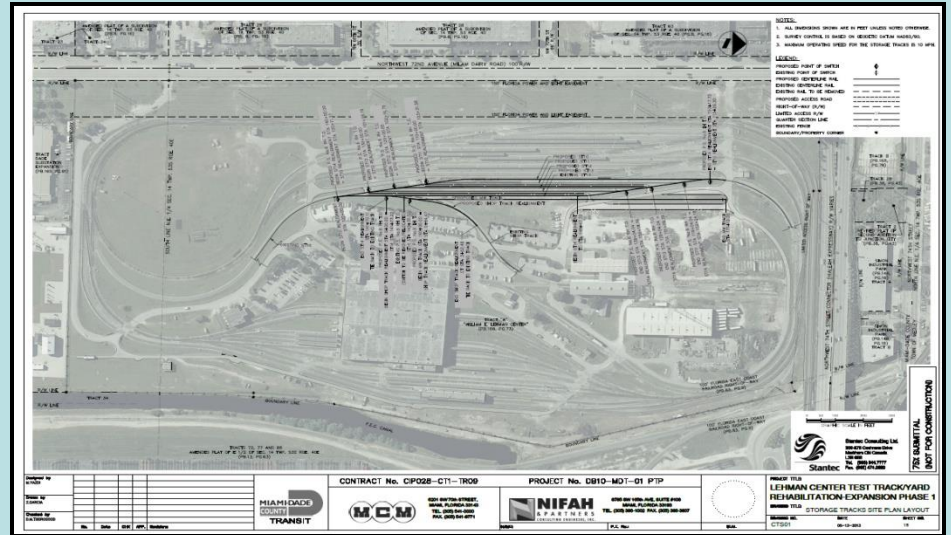
Lehman Center Test Track

Cost	\$16.6M
Completed	60%
Start	2/2013
End	11/2014



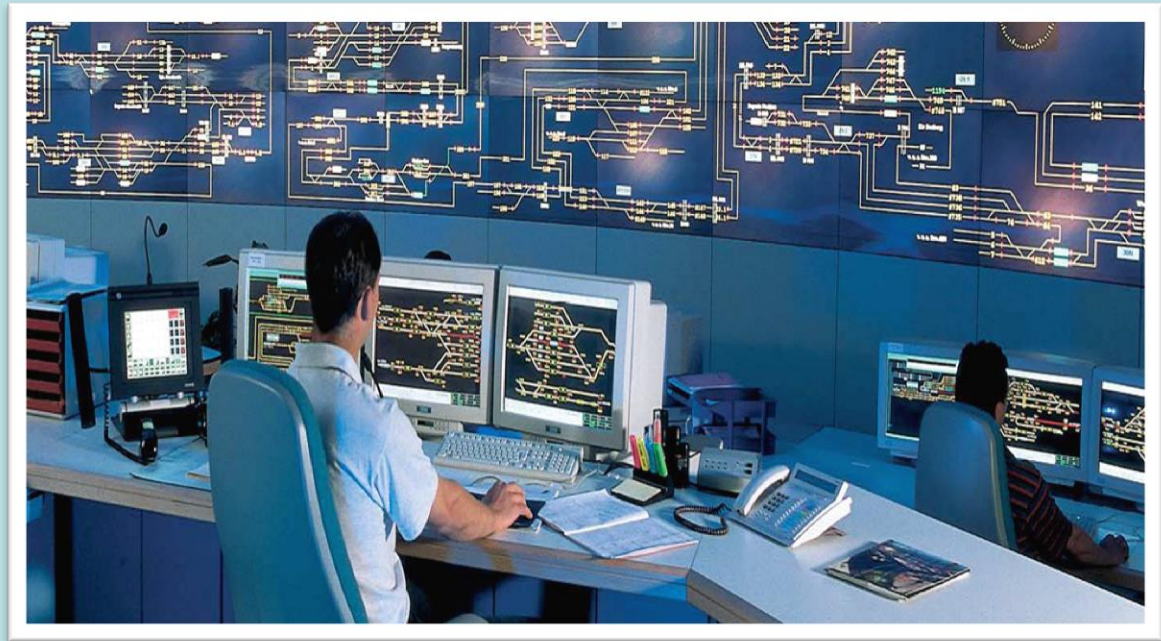
Lehman Yard Rehabilitation – Expansion Phase 1

Cost	\$8.7M
Completed	70%
Start	2/2013
End	9/2014



Central Control Upgrade

Cost	\$26.3M
Completed	75%
Start	3/2012
End	12/2014



Metrorail Vehicle Replacement

Cost	\$375.8M
Completed	15%
Start	12/2012
End	3/2024



Computer Aided Dispatch/Automated Vehicle Locator (CAD/AVL) – Bus Tracker

Cost	\$17.11M
Completed	30%
Start	11/2013
End	12/2015



CAD/AVL Fleet Management

Central Control



Maintenance Facilities



Transit Signal Priority



Park and Ride at SW 344 Street and Busway

Cost	\$10.9M
Completed	15%
Start	1/2014
End	3/2015



M-PATH Improvements from SW 67 Ave. to Miami River

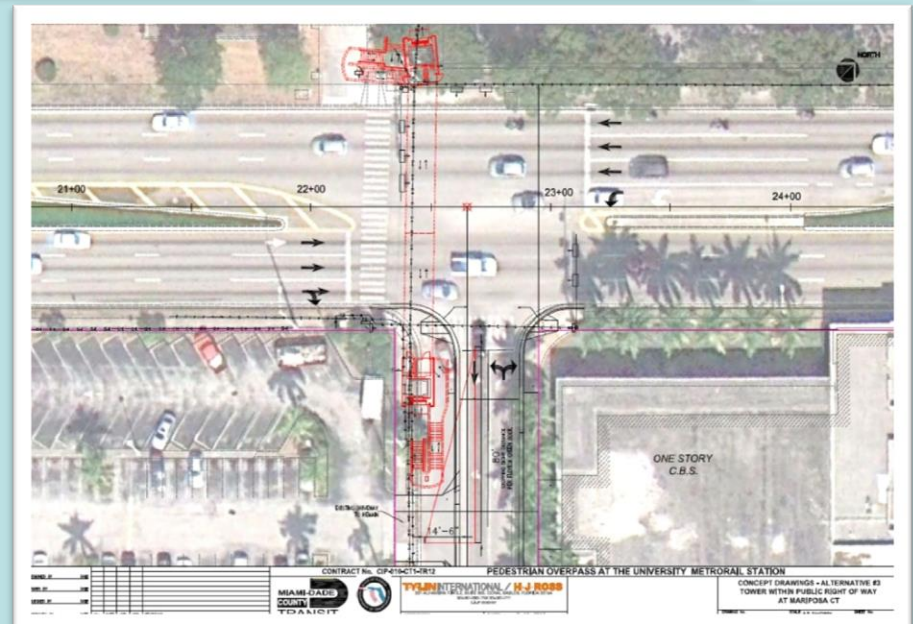
Cost	\$1.4M
Completed	15%
Start	2/2014
End	2/2015



PROJECTS IN DESIGN

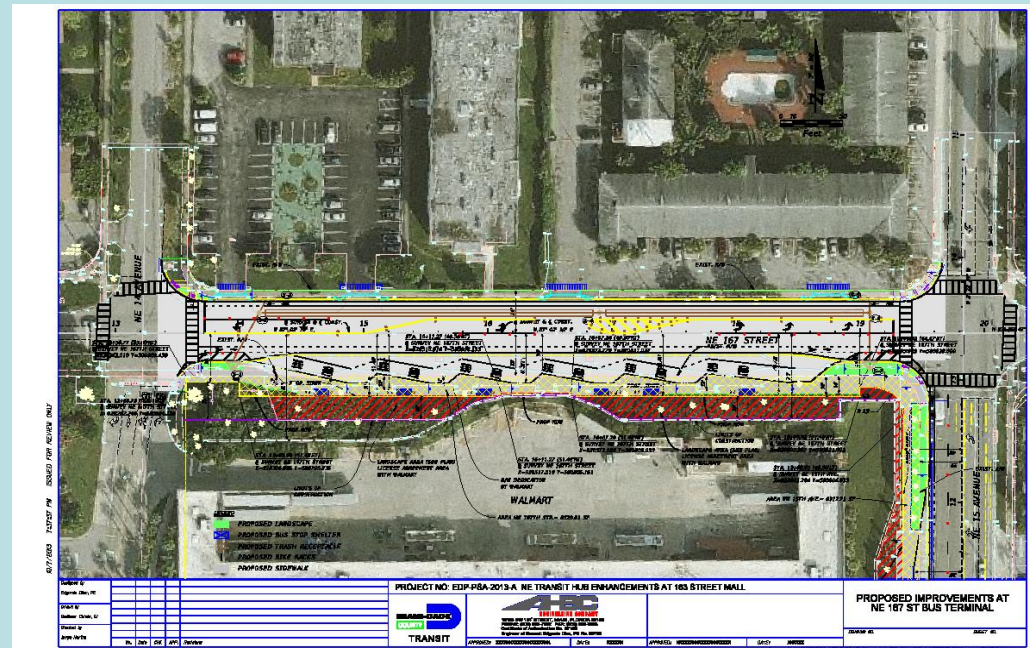
Pedestrian Overpass at University Metrorail Station

Cost (Budget)	\$6.6M
Completed (Design)	100%
Start (Construction)	3/2015
End (Construction)	4/2016



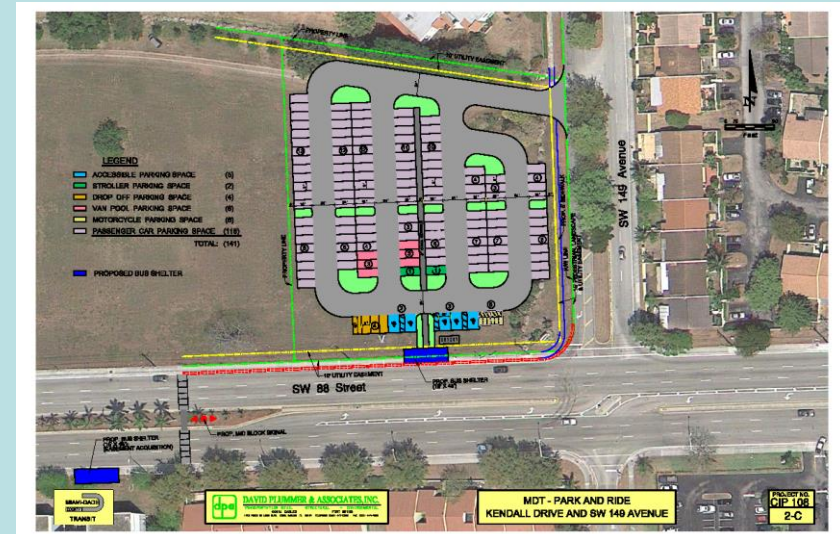
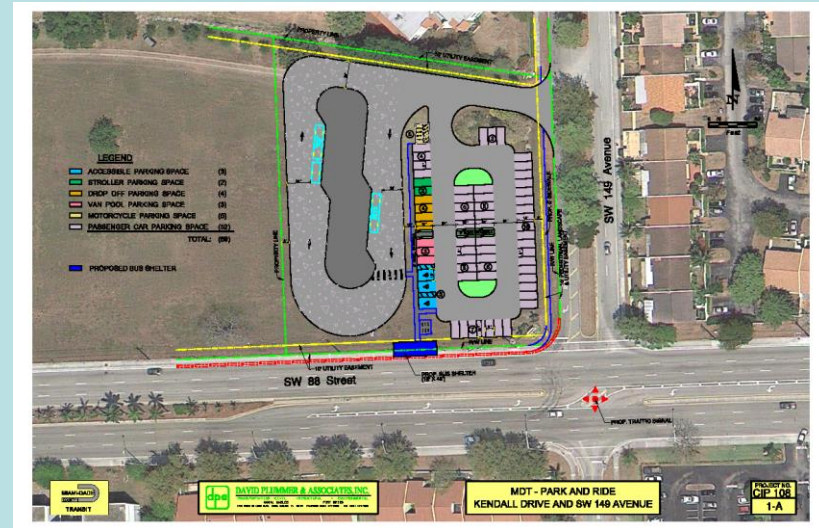
BUS TERMINAL IMPROVEMENTS @ 163rd Street Mall

Cost (Budget)	\$1.5M
Completed (Design)	100%
Start (Construction)	11/2014
End (Construction)	11/2015



Park and Ride @ SW 149th Avenue

Cost (Budget)	\$4.3M
Completed (Design)	15%
Start (Construction)	12/2015
End (Construction)	11/2016



PROJECTS IN PLANNING

Status of PTP Corridors

PROPOSED RAPID TRANSIT LINES



Corridor	Project	Funding	Funding Type			Status			Revenue Service
			Fed	State	Local	Planning	Design	Const.	
Airport	Earlington Heights - Airport Connector	Full		☑	☑	☑	☑	☑	2012
North	27 Ave "Orange MAX" (Phase 1)	Full		☑	☑	☑	☑	☑	2012
	NW 27 Ave EBS (Phase 2)	Full	☑	☑	☑	☑★			2019
East-West	SR 836 Express EBS	Full	☑	☑	☑	★			2019
	Flagler EBS	Partial	☑	☑	☑	★			2021
Beach	F.K.A. "Baylink"	None				★			TBD
Kendall	Kendall Cruiser (Phase 1)	Full	☑	☑	☑	☑	☑	☑	2010
	Kendall EBS (Phase 2)	None				★			2023
Northeast	Biscayne EBS	Partial	☑	☑	☑	★			2021
South	Busway Corridor	None				★			TBD
Douglas	Douglas Road EBS	None				★			2023

★ Current Project Status

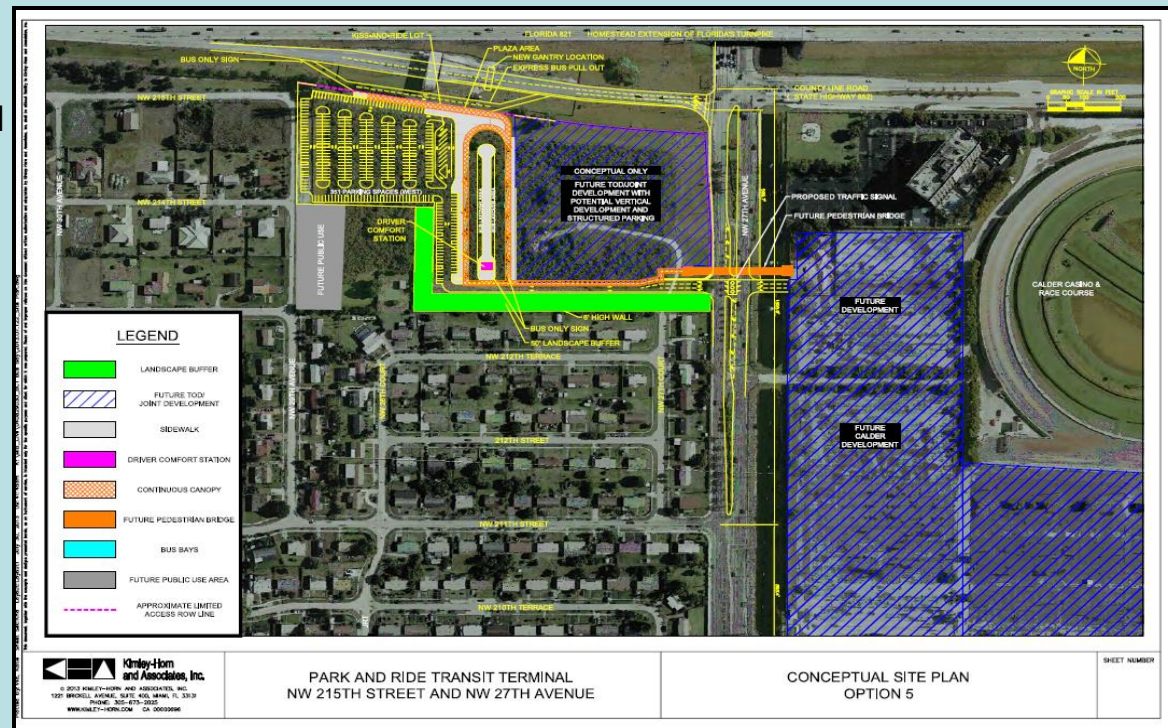
☑ Phase Completed

PUBLIC PRIVATE PARTNERSHIP

**TRANSIT ORIENTED DEVELOPMENT
PROJECTS**

NW 215th Street and NW 27th Avenue

- 14-acre parcel purchased by Miami-Dade Transit
- Study completed resulting in recommendation to designate the majority of the site as a Community Urban Center (CUC) which calls for moderate to high-intensity, mixed use development
- Development would contain institutional, office and retail components in an environment that encourages pedestrian activity with a defined, transit oriented center
- Also recommended a transit terminal (adjacent to NW 27 Avenue) including bus bays, passenger shelters and a park and ride lot; enhanced bus service along the NW 27 Avenue corridor
- Project proposals due June 23, 2014



NW 7th Avenue Transit Village

Scope: Mixed-use development providing space for enhanced Transit facility, housing, community-service activities and retail space

Cost: \$50M estimated for total cost of the project with \$10M in federal funds for purchase of property and transit facilities only; \$15M from GOB for building and theater

Status: Demolition completed. Developer obtaining permits. Construction began in March 2014 and is expected to end November 2015.

NW 7th Avenue Transit Village



NW 7th Avenue Transit Village



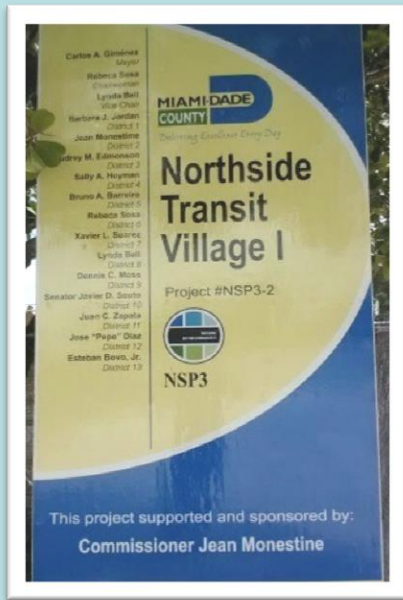
Northside Metrorail Station

- Scope:** Mixed-use development providing for housing (approximately 438 affordable rental units), retail space and parking for Transit patrons (approximately 250 spaces)
- Cost:** Total cost estimated at approximately \$88M with \$2.5M from GOB
- Status:** Construction of Phase I began June 2013 and is expected to end November 2014.

Northside Metrorail Station



Northside Metrorail Station



Transit Oriented Developments to be advertised this year

- Douglas Road Metrorail Station
- Omni Bus Terminal

Thank You!