

## Board Requested Public Works Projects

The original PTP Exhibit 1 included a list of 44 site specific projects as Board Requested Major Roadway and Neighborhood Improvements to be carried out by PWWM. In 2008 Resolution R034-08 amended Exhibit 1 and brought the new total to 45 in replacing the SW 87 Avenue from SW 216 Street to SW 168 Street project with two others: Old Cutler Road from SW 87 Avenue to SW 97 Avenue; and Caribbean Boulevard from Coral Sea Road to SW 87 Avenue. The status of the 45 projects, as of September 2012 is as follows:

	Current Update	Change versus: FY12 Plan Update	FY11 Initial Plan
Projects Complete	26	2 more completed	3 more completed
Under Construction	1	2 less under construction	2 less under construction
Joint Participation Agreements	4	3 less	3 less
ROW Acquisition	8	Same	Same
Under Design	4	Two more	Two more
Undergoing Further Project Development – Projects With Begin of Design Pending	2	Same	Same
<b>Total Board Requested Projects</b>	<b>45</b>	<b>Same</b>	<b>Same</b>

The Board Requested Projects have been divided into the following categories; Resurfacing and Re-Marking, Roadway and Traffic Operational Improvements, New Roadways, Widening of Roadways, Narrowing of Roadways, and New Bridge.

### 1. Resurfacing and Remarking

#### a) NW 22 Avenue (NW 135 Street to State Rd 9), Resurfacing and Remarking

This project is complete. This project is portion located in District 1 (north of NW 135 Street)The total amount expended for this project was \$293,000 and the only source of funds was PTP Surtax revenues.

#### b) Roads With Poor to Fair Pavement Conditions Sections: 5-52-41, 8-52-41, 9-52-41, 14-52-41, 16-52-41, 18-52-41, Resurfacing and Remarking

This project is complete. This project is portion located in District 1. The total amount expended for this project is \$5.889 million and was funded by PTP Surtax revenues.

#### c) NW 22 Avenue (NW 135 Street to NW 62 Street) Resurfacing and Remarking

This project is complete. This project is portion located in District 2 (south of NW 135 Street). The actual total cost for the project was \$1.468 million, funded solely from the PTP Surtax revenues.

#### d) Roads With Poor to Fair Pavement Conditions Sections: 27-54-40, 28-54-40, 29-54-40, Resurfacing and Remarking



This project is complete. This project is portion located in District 7. This project was funded solely from PTP Surtax revenues and was completed for a total cost of \$2.551 million.

## 2. Roadway and Traffic Operational Improvements

### a) NW 62 Street (NW 37 Avenue to I-95), Resurfacing and Traffic Operational Improvements

This project is complete and was executed in partnership with the City of Miami. The County built the portion of the project from NW 12 Avenue to NW 37 Avenue, and the City built the portion from I-95 to NW 12 Avenue. Total cost was \$2.582 million, funded from PTP Surtax revenues.



### b) NE 2 Avenue from NE 91 Street to NE 20 Street, Street and Traffic Operational Improvements

Total Surtax funding is \$29.197 million. Overall remains 26% complete (\$7.557 million expended to date). Status for each phase as follows.

Phase		Status
1	NE 20 Street to NE 36 Street	Pending JPA
2	NE 36 Street to NE 42 Street	Completed by City and funded by ARRA
3	NE 42 Street to NE 62-51 Street	Pending JPA
4	NE 51 Street to NE 57 Street	Under Construction by City and funded by ARRA (99% Complete)
5	NE 57 Street to NE 69 Street	Completed by City and funded by ARRA
6	NE 69 Street to W Little River	Pending JPA
7	W Little River to NE 91 St	Completed by PWWM

The current (FY13) Adopted Budget now shows the first six phases collapsed into a single project from NE 20 Street to West Little River Canal, at \$21.326 million. The previous year's (FY12) Budget showed phases 1, 2, 3 and 6 as separate projects at \$21.4 million. Thus the current cost estimate is slightly decreased from year ago.

#### From 2012-2013 Adopted Capital Plan

#### IMPROVEMENTS ON NE 2 AVENUE FROM NE 20 STREET TO WEST LITTLE RIVER CANAL STREET

PROJECT # 601110

Construct street improvements and traffic operational improvements

LOCATION: NE 2 Ave from NE 36 St to West Little River, City of Miami

DISTRICT LOCATED: 3

ESTIMATED ANNUAL OPERATING IMPACT: Minimal

DISTRICT(s) SERVED: 3

Revenue Schedule	Prior Years	2012-13	2013-14	2014-15	2015-16	2016-17	2017-18	Future	Total
PTP Bonds	7,176	10,000	4,127	0	0	0	0	0	21,303
Charter County Transit System Surtax	23	0	0	0	0	0	0	0	23
<b>Total Revenue:</b>	<b>7,199</b>	<b>10,000</b>	<b>4,127</b>	<b>0</b>	<b>0</b>	<b>0</b>	<b>0</b>	<b>0</b>	<b>21,326</b>
Expenditure Schedule:	Prior Years	2012-13	2013-14	2014-15	2015-16	2016-17	2017-18	Future	Total
Construction	7,199	10,000	4,127	0	0	0	0	0	21,326
<b>Total Expenditures:</b>	<b>7,199</b>	<b>10,000</b>	<b>4,127</b>	<b>0</b>	<b>0</b>	<b>0</b>	<b>0</b>	<b>0</b>	<b>21,326</b>

### c) NW 7 Street (NW 72 Avenue to NW 37 Avenue), Resurfacing and Traffic Operational Improvements

This project is complete. Project cost is \$2.524 million, funded from PTP Surtax revenues.

**d) SW 62 Avenue (SW 24 Street to NW 7 Street), Street Improvements**

This project has completed construction and only pending closeout as of September 2011. The project was funded by PTP Surtax revenues (\$9.979 million total cost).

**e) NW 82 Avenue / NW 8 Street (NW 7 to 10 Street / NW 87 to 79 Avenue), Roadway Reconstruction**

This project is complete. The total funded from PTP Surtax revenues was \$1.715 million. Additional funding was provided from the General Obligation Bond (GOB) totaling \$1 million, \$184,000 was provided from the Quality Neighborhood Improvement Plan (QNIP) and \$6 million from the Storm Water Utility Funds.

**f) SW 72 Avenue (SW 40 Street to SW 20 Street): Street and Traffic Operational Improvements**

This project is complete. Total Surtax funding is \$1.981 million.

**g) South Bayshore Drive (Darwin to Mercy Way) (Amendment R-246-07): Resurfacing and Median Improvements**

This project remains 5% complete (based on County portion of funding). The original project limits of McFarlane Road to Aviation Avenue were amended by Board resolution in 2007 to be from Darwin to Mercy Way. This project is being managed by the City of Miami through a JPA with the County. The project is currently proposed to have Surtax funding for the design (estimated \$514,000) and the construction to be funded from Road Impact Fees. The total amount expended remains \$25,000, with an estimated \$489,000 remaining to complete the design.

**From 2012-2013 Adopted Capital Plan**

**IMPROVEMENTS TO SOUTH BAYSHORE DRIVE FROM DARWIN STREET TO MERCY WAY**

**PROJECT # 601170**

Resurface and construct median improvements for 1.5 miles of roadway

LOCATION: S Bayshore Dr from Darwin St to Mercy Way, City of Miami

DISTRICT LOCATED: 7

ESTIMATED ANNUAL OPERATING IMPACT: Minimal

DISTRICT(S) SERVED: 7

Revenue Schedule	Prior Years	2012-13	2013-14	2014-15	2015-16	2016-17	2017-18	Future	Total
Road Impact Fees	0	2,600	2,000	1,400	0	0	0	0	6,000
PTP Bonds	461	39	0	0	0	0	0	0	500
Charter County Transit System Surtax	14	0	0	0	0	0	0	0	14
<b>Total Revenue:</b>	<b>475</b>	<b>2,639</b>	<b>2,000</b>	<b>1,400</b>	<b>0</b>	<b>0</b>	<b>0</b>	<b>0</b>	<b>6,514</b>
Expenditure Schedule:	Prior Years	2012-13	2013-14	2014-15	2015-16	2016-17	2017-18	Future	Total
Planning and Design	475	39	0	0	0	0	0	0	514
Construction	0	0	0	3,000	3,000	0	0	0	6,000
<b>Total Expenditures:</b>	<b>475</b>	<b>39</b>	<b>0</b>	<b>3,000</b>	<b>3,000</b>	<b>0</b>	<b>0</b>	<b>0</b>	<b>6,514</b>

**h) South Miami Avenue (SW 25 Road to SW 15 Road), Traffic calming, curbs & sidewalks**

This project is complete; total cost was \$1.255 million. This project was managed by the City of Miami through a JPA with the County.



### 3. New Roadways

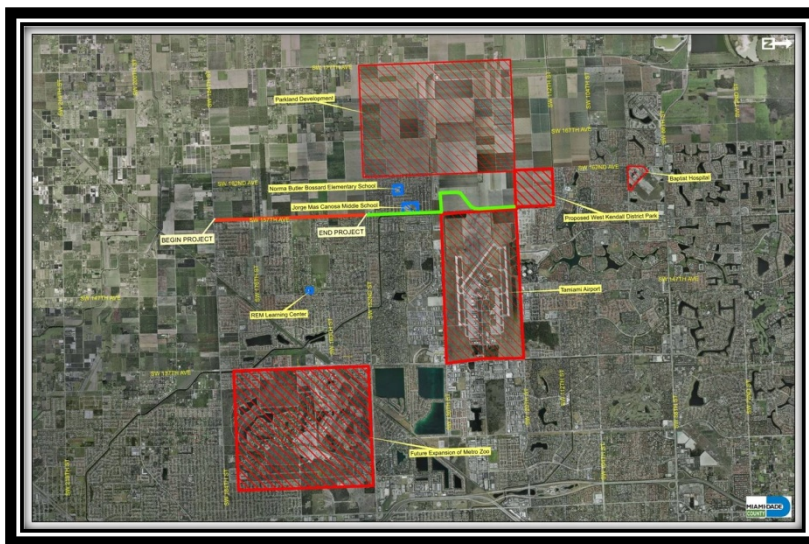
#### a) Miami Gardens Drive Connector (US-1 to William Lehman Causeway), New Four Lane Road

This project is complete. This project was managed by the City of Aventura through a JPA with the County. The original estimate of \$3.3 million was reduced to \$1.881 million because the developer entered into an agreement to furnish the design and construct a portion of the roadway. The total project cost funded by the Surtax was \$1.281 million, with the balance of \$600,000 funded by Road Impact Fees.

#### b) SW 157 Avenue (SW 184 Street to SW 152 Street), New Four Lane Road

The project is 15% complete and in the Request To Advertise process, currently with an expected completion in November 2015 (has slipped, was October 2014 in FY12 Plan Update and August 2014 in FY11 Plan). The initial budget of \$8.5 million in 2002 has now increased to the current total estimated cost of \$14.331 million (as compared to \$12.324 million as shown in FY11 Initial Plan and FY12 Plan Update), with \$2.095 million expended as of June 2012. This project is the portion of new SW 157 Avenue construction located in District 9.

The project consists of widening the existing two-lane, undivided roadway to a four-lane, divided highway with a raised median, sidewalks, curb and gutters, a continuous storm drainage system, wide curb lanes to accommodate bicycle traffic, signalization, pavement markings and signage, and roadway lighting. The project's implementation constitutes the last leg of the SW 157 Avenue corridor (SW 184 Street to SW 112 Street) included in Exhibit 1 of the PTP. It would complete a continuous roadway from SW 8 Street to SW 184 Street, featuring mobility for both existing residences and absorbing a portion of future traffic growth in the area – namely, relief from traffic congestion for north-south corridors in the expanding southwest area of the County. SW 137 Avenue and SW 177 Avenue/Krome Avenue are the north-south arterial roadways which currently provide connection to SW 88 Street/North Kendall Drive and SW 184 Street.



Most of the future growth in the area consists of new residential developments, office space, schools, retail centers and industrial developments, as well as improvements to existing employment and attraction centers such as the Kendall-Tamiami Executive Airport and Zoo Miami. This section of SW 157 Avenue also forms part of the current Urban Development Boundary. Additionally, the extension of the SR 874/Don Shula southern termini is under review by MDX for a projected connection to SW 127 Avenue (see page 84), which is expected to bring more traffic into the area.

The Trust had recommended for the 2011 Plan that traffic studies be updated prior to immediate commencement of construction. PWWM presented the further analysis in December 2011 for Trust's consideration during its review of Right of Way Acquisition for one of the first parcels as part of this project. PWWM utilized traffic count data and transportation planning models. Traffic counts from 2006 to 2011 appear to confirm the need for the project: traffic volumes along SW 157 Avenue south of SW 152 Street have doubled in the past five years, despite the recent economic downturn. Further, daily volume as of 2011 on this road

segment is over 75% of capacity. Only a 5% diversion of the existing traffic from nearby SW 137 Avenue – which is already fully widened to six-lane divided – to SW 157 Avenue can bring the two-lane segment of SW 157 Avenue to a failing condition. It is estimated this PTP project will relieve SW 137 Avenue south of SW 128 Street, in 2011 operating at LOS F (a failing condition evidencing a badly congested roadway). Lastly, the Florida Department of Transportation (FDOT) planning model (FSUTMS) indicates the traffic volume for a two-lane roadway on SW 157 Avenue is projected to reach capacity and operate at LOS F in the year 2020.

**From 2012-2013 Adopted Capital Plan**

**CONSTRUCTION OF SW 157 AVENUE FROM SW 152 STREET TO SW 184 STREET**

**PROJECT # 609590**

Construct two miles of a new four lane road

LOCATION: SW 157 Ave from SW 184 St to SW 152 St, Unincorporated Miami-Dade County

DISTRICT LOCATED: 9

ESTIMATED ANNUAL OPERATING IMPACT: Minimal

DISTRICT(S) SERVED: 8, 9

Revenue Schedule	Prior Years	2012-13	2013-14	2014-15	2015-16	2016-17	2017-18	Future	Total
PTP Bonds	1,063	4,000	5,000	1,260	0	0	0	0	11,323
Charter County Transit System Surtax	26	0	0	0	0	0	0	0	26
<b>Total Revenue:</b>	<b>1,089</b>	<b>4,000</b>	<b>5,000</b>	<b>1,260</b>	<b>0</b>	<b>0</b>	<b>0</b>	<b>0</b>	<b>11,349</b>
Expenditure Schedule:	Prior Years	2012-13	2013-14	2014-15	2015-16	2016-17	2017-18	Future	Total
Planning and Design	789	0	0	0	0	0	0	0	789
Construction	300	4,000	5,000	1,260	0	0	0	0	10,560
<b>Total Expenditures:</b>	<b>1,089</b>	<b>4,000</b>	<b>5,000</b>	<b>1,260</b>	<b>0</b>	<b>0</b>	<b>0</b>	<b>0</b>	<b>11,349</b>

Contracts (See Appendix for fuller listing of Trust-approved contracts)

20040372 SW 157 AVE SW 184 TO 152 ST

20100678 PTP Roadway Improvements along SW 157 Avenue, from SW 184 Street to SW 152 Street

**c) SW 157 Avenue, New Four Lane Road**

- 1) SW 112 Street to SW 120 Street
- 2) SW 120 Street to SW 136 Street
- 3) SW 136 Street to SW 152 Street

These projects are now complete (pending closeout and final payments), with total cost \$15.341 million and funded by PTP Surtax revenues. This project is the portion located in District 11.

**d) New Access to Country Walk (Land Acquisition and Extension of SW 143 Terrace From Railroad Tracks to SW 136 Street), New Two Lane Road**

This project has been completed. The total cost of \$1.529 million is funded from PTP Surtax revenues.

**e) SW 160 Street (SW 147 Avenue to SW 137 Avenue), New Four Lane Road**

This project is complete. Total cost was \$7.940 million, funded solely from PTP Surtax.

**f) NW 74 Street (HEFT to SR 826) Amendment R-531-06, New Six Lane Road.**

In collaboration with the FDOT, this project was amended by Board resolution in 2006 extending the eastern limit to SR826 from the originally proposed NW 82nd Ave, and increasing the travel lanes to six from the original four. The agreement with FDOT called for PWWM to carry out the amended project using Surtax funding, and FDOT reimbursing the PTP for the additional costs due to the expanded scope of work beyond the original four lanes. Phase 1 (NW 107 Avenue to NW 84 Avenue) is completed. The remaining two phases (NW 107 Avenue to NW 114 Avenue and SR826 to NW 84 Avenue) have completed designs, pending completion of ROW acquisition by FDOT. (This clarifies the progress shown in the FY12 Plan Update, as statuses are unchanged versus year ago.) Phase 1 of this project included the execution of the JPA with FDOT for a \$22.5 million reimbursement to





the County. A Local Agency Participation (LAP) Agreement was approved by the BCC for Phase II; a LAP for Phase III is in process. These LAP Agreements are to be executed for the reimbursement of County expenditures on the remaining phases. The total Surtax funding amount expended is \$38.101 million with \$14.693 million in reimbursements received; these amounts are unchanged from FY11 and FY12 Five Year Plans. An estimated \$36.421 million required to complete (excluding FDOT reimbursement). The schedule implementation date is postponed six months from December 2014 to May 2015, in order to secure the LAP Agreement approvals. The project is now 69% complete based on current \$73.521 million total cost before State contributions. The following from the current (FY13) Approved Capital Budget shows total estimated cost for non-ROW portion at \$46.492 million, reflects a slight increase \$45.205 million shown in previous year and initial (FY11) Plan.

#### From 2012-2013 Adopted Capital Plan

#### WIDEN NW 74 STREET FROM THE HOMESTEAD EXTENSION OF THE FLORIDA TURNPIKE (HEFT) TO STATE ROAD 826 PROJECT # 6036590

Widen road from two lanes to four lanes on 0.5 miles of roadway

LOCATION: NW 74 St from HEFT to SR826, Unincorporated Miami-Dade County

DISTRICT LOCATED: 12

ESTIMATED ANNUAL OPERATING IMPACT: Minimal

DISTRICT(s) SERVED: 12

Revenue Schedule	Prior Years	2012-13	2013-14	2014-15	2015-16	2016-17	2017-18	Future	Total
FDOT Funds	15,814	6,721	5,561	0	0	0	0	0	28,096
PTP Bonds	17,276	151	0	0	0	0	0	0	17,527
Charter County Transit System Surtax	869	0	0	0	0	0	0	0	869
<b>Total Revenue:</b>	<b>33,959</b>	<b>6,872</b>	<b>5,561</b>	<b>0</b>	<b>0</b>	<b>0</b>	<b>0</b>	<b>0</b>	<b>46,492</b>
Expenditure Schedule:	Prior Years	2012-13	2013-14	2014-15	2015-16	2016-17	2017-18	Future	Total
Planning and Design	2,485	0	0	0	0	0	0	0	2,485
Construction	31,474	6,872	5,561	0	0	0	0	0	44,007
<b>Total Expenditures:</b>	<b>33,959</b>	<b>6,872</b>	<b>5,561</b>	<b>0</b>	<b>0</b>	<b>0</b>	<b>0</b>	<b>0</b>	<b>46,492</b>

Contracts (See Appendix for fuller listing of Trust-approved contracts)

20040355 PTP Roadway Improvements to NW 74th Street from NW 107th Avenue to NW 87th Avenue

20070575 PTP Roadway Improvements along NW 74 Street, from NW 107 Avenue to NW 87 Avenue and NW 74 Street, from NW 87 Avenue to NW 84 Avenue, located within Commission District 12

20070610 PTP NW 74 Street Improvements - Contamination Assessment and Remediation Work, located within Commission District 12

E06-PW-04 Consultant Services for Construction Engineering and Inspection Services for NW 74 Street, from NW 107 Avenue to NW 87 Avenue

#### 4. Widening of Roadways

##### a) NW 37 Avenue (NW 79 Street to NW North River Drive), Widen from 2 to 5 Lanes

This project is 8% complete, based on \$1.731 million funding expended. ROW Acquisition is in process, and design is complete. Total cost estimate is increased to \$20.514 million, remains funded from PTP Surtax revenues. Balance to complete is currently \$18.783 million. Previous shown in FY11 Five Year Plan was \$15.079 million budget with \$1.306 million expended and \$13.773 million balance to complete; FY12 Plan was \$17.249 million total, \$1.378 million expended, \$15.870 million to complete; the updated estimates and percentage completion recognize increasing construction costs for the project. Targeted completion slipped 25 months to March 2017 as a result of delays in continued Right of Way acquisition process (was February 2015 in FY11 and FY12 Plans).

The project was initiated as a five lane road-way project, and the proposed right-of-way acquisitions will acquire sufficient land to accommodate five lanes. The following has impacted the scope of the project:

- PWWM agreed to vacate the portion of NW 37 Avenue from N River Drive to NW 36 Street (R-508-11) as part of the global agreement with Miami Jai-alai for the dedication of the needed right-of-way for the Airport Link rail extension. As such, the project limits were reduced to be NW 36 Street to NW 79 Street.
- The project runs along a fully developed commercial and industrial area, therefore right-of-way acquisitions were minimized to limit the impact on the existing businesses. During public meetings where the project was presented, business owners overwhelmingly requested the inclusion of on-street parallel parking within the project. However, a five lane expansion and parallel parking could not be accomplished without the need to acquire additional ROW and significantly impact the businesses.
- The project does provide five lanes at the major intersections and their approaches. However the majority of the project will consist of three lanes with parallel parking where possible.
- The project essentially provides the construction of five lanes, with two lanes occupied by the proposed parallel parking.

While described as three lanes in agenda items approved Summer 2012 by the Trust and Board, the project still provides five lanes as described above. Additionally, the agreement with Miami Jai-alai was financed by the County; as such Miami Jai-alai is making monthly payments to the County for their purchase of the property. In the event of default, the property would revert to the County and be built out to the five lanes.

##### From 2012-2013 Adopted Capital Plan

##### WIDEN NW 37 AVENUE FROM NORTH RIVER DRIVE TO NW 79 STREET

PROJECT # 606190

Widen road from two to five lanes on two miles of roadway

LOCATION: NW 37 Ave from NW N River Dr to NW 79 St, Unincorporated Miami-Dade County

DISTRICT LOCATED: 2

ESTIMATED ANNUAL OPERATING IMPACT: Minimal

DISTRICT(s) SERVED: 2

Revenue Schedule	Prior Years	2012-13	2013-14	2014-15	2015-16	2016-17	2017-18	Future	Total
PTP Bonds	1,163	2,050	7,000	7,000	1,044	0	0	0	18,257
Charter County Transit System Surtax	31	0	0	0	0	0	0	0	31
<b>Total Revenue:</b>	<b>1,194</b>	<b>2,050</b>	<b>7,000</b>	<b>7,000</b>	<b>1,044</b>	<b>0</b>	<b>0</b>	<b>0</b>	<b>18,288</b>
Expenditure Schedule:	Prior Years	2012-13	2013-14	2014-15	2015-16	2016-17	2017-18	Future	Total
Planning and Design	1,094	50	0	0	0	0	0	0	1,114
Construction	100	2,000	7,000	7,000	1,044	0	0	0	17,144
<b>Total Expenditures:</b>	<b>1,194</b>	<b>2,050</b>	<b>7,000</b>	<b>7,000</b>	<b>1,044</b>	<b>0</b>	<b>0</b>	<b>0</b>	<b>18,288</b>

Contract (See Appendix for fuller listing of Trust-approved contracts)  
20040330 NW 37 AVE NW 79 ST TO N. RIVER DR



**b) SW 97 Avenue (SW 72 Street to SW 56 Street), Widen to 3 Lanes**

This project is complete. Total cost was \$6.648 million funded by the PTP Surtax.

**c) SW 97 Avenue (SW 56 Street to SW 40 Street), Widen to 3 Lanes**

This project is also complete. The \$5.198 million project cost (slightly revised from \$5.193 million shown in FY11 and FY12 Plans) was funded with PTP revenues.



**d) SW 27 Avenue (US-1 to Bayshore Drive), Widen to 3 lanes**

This project is 76% complete overall and consists of two phases. Phase I is complete, covering segments from S Bayshore Drive to Tigertail Avenue, and from SW 28 Terrace to US-1 Phase II is the remaining SW 28 Terrace to Tigertail Avenue, has design and ROW completed, and the full project is expected to be complete by October 2014. Note, was expected complete March 2014 in FY12 Five Year Plan Update and March 2013 in FY11 Five Year Plan. Revised estimate to complete implementation continues to be primarily due to further extended time for Right of Way acquisitions. The sole source of funding for the project is PTP for the total \$15.600 million cost, with \$11.789 million expended to date as of June 2012. Cost estimate was \$14.935 million in FY11 and FY12 Plan.

The following from the current (FY13) Approved Capital Budget shows estimated cost at \$6.454 million, which is slightly increased from \$6.079 million shown in FY12 Five Year Plan Update and \$5.935 million shown in FY11 Initial Five Year Plan.



# From 2012-2013 Adopted Capital Plan

## WIDEN SW 27 AVENUE FROM US-1 TO BAYSHORE DRIVE

PROJECT # 601260

Widen road from two lanes to three lanes on one mile of roadway

LOCATION: SW 27 Ave from US-1 to Bayshore Dr, City of Miami

DISTRICT LOCATED: 7

ESTIMATED ANNUAL OPERATING IMPACT: Minimal

DISTRICT(s) SERVED: 7

Revenue Schedule	Prior Years	2012-13	2013-14	2014-15	2015-16	2016-17	2017-18	Future	Total
PTP Bonds	2,752	3,000	670	0	0	0	0	0	6,422
Charter County Transit System Surtax	32	0	0	0	0	0	0	0	32
<b>Total Revenue:</b>	<b>2,784</b>	<b>3,000</b>	<b>670</b>	<b>0</b>	<b>0</b>	<b>0</b>	<b>0</b>	<b>0</b>	<b>6,454</b>
Expenditure Schedule:	Prior Years	2012-13	2013-14	2014-15	2015-16	2016-17	2017-18	Future	Total
Planning and Design	950	0	0	0	0	0	0	0	950
Construction	1,834	3,000	670	0	0	0	0	0	5,504
<b>Total Expenditures:</b>	<b>2,784</b>	<b>3,000</b>	<b>670</b>	<b>0</b>	<b>0</b>	<b>0</b>	<b>0</b>	<b>0</b>	<b>6,454</b>

Contract (See Appendix for fuller listing of Trust-approved contracts)

20040337

SW 27 AVE US 1 TO BAYSHORE DR

7360: 20100517

People's Transportation Plan (PTP) Roadway Improvements

## e) SW 120 Street (SW 137 Avenue to SW 117 Avenue), Widen from 4 to 6 Lanes

This road widening project has been determined as not feasible due to ROW constraints and required displacement of adjacent residences and business. PTP Surtax revenues funded the \$37,000 expended on the project.

The following is from the Unfunded Priority Needs section of the 2010 TIP. The project is not listed as a line item of Public Works Transportation projects in the 2010 Capital Budget's Unfunded Needs.

MPO Project Num.	Facility/Project Name	Type of Work	Project Cost (\$000s)	Unfunded Projects
Agency Project Num.	From/Location To/Location	Remarks		
	Detailed Project Description			
PW20040345	SW 120 Street	Widening: 4 to 6 lanes	8100	Activity /Phase Required Project Funding by Phase (where available) (in \$000s)
	SW 137 Avenue SW 117 Avenue	Prior Years Funding as follows: \$35,000 for PE.		
20040346	Widen 4 to 6 lanes			
				0



**f) SW 137 Avenue (US-1 to SW 184 Street), Widen to 4 Lanes/ New 4 Lanes (now defined as New 2 Lane Roadway from US-1 to SW 184 Street)**

This project is 6% complete and the CITT and the BCC in January 2012 awarded the Design Build Contract pursuant to the Unsolicited Proposal procedures. This contract award is lower than the cost estimates and provides a defined target completion date for this project. The BCC approved to advertise the proposal October 2010. Based on the award recommendation, an anticipated timeframe for completion is December 2014 (seven months earlier than July 2015 shown in FY12 Five Year Plan Update; completion date was unknown in FY11 Initial Plan). Total project cost is \$19.751 million (versus \$23.7 million in FY12 Plan and \$24.055 million in FY11 Plan) and funded from the PTP Surtax, with \$1.240 million expended on the project to date.

This segment of roadway is included in the 137 Avenue Corridor Study (2007), sponsored by the Miami-Dade County MPO, to evaluate the feasibility of making 137<sup>th</sup> Avenue the fourth north/south facility between Homestead and Central Miami-Dade. The current three are US1/SR 5, HEFT/SR821 and Krome Avenue/SR 997. This is among the original projects presented to the voters as part of Exhibit 1 of the PTP under Board Requested Major Roadway and Neighborhood Improvement Projects. The project is also identified in the Transportation Improvement Program (TIP) and the 2009-10 and subsequent Resource Allocation and Multi-Year Capital Plan.

The project description in PTP Exhibit 1 is to widen SW 137 Ave, from US1 northward to SW 184 St. to 4-lanes/new 4 lanes. It is now defined as a three-lane (2 travel, 1 turn) design-build project with the design, land acquisition, and construction done in phases that allow the construction of the full 4 travel lanes in the future. Per the December 2011 Mayor's Recommendation to Award the Design-Build-Finance contract and Reject the Unsolicited Proposal, the work includes sidewalks, curbs and gutters, a continuous storm drainage system, signalization, pavement markings and signage, standard roadway lighting system, bicycle facilities, landscaping, a bridge crossing Canal C-102 and a bridge/culvert crossing Canal C-102N. The construction under this phase is limited to 3 lanes (2 travel lanes plus 1 turn lane) to reduce initial implementation costs. Scope changes also reduce the project limits from SW 184 Street to SW 200 Street (2 lane road already exists between SW 184 and SW 200 Streets), and to negotiate and acquire Right of Way that attains a 110 foot wide section for future widening to a six or four travel-lane divided road. The later phase is unfunded, which would implement more than the two travel lanes (first phase) currently programmed.

Note prior to the FTA downgrade of the Orange Line and the reduction in PWWM-PTP funding, the estimates exceeded \$38 million for the original 4-lane project. With the reduced estimate for Phase 1 of the project to under \$20 million in this FY13 Plan Update, the overall project estimate is lowered to \$34 million. The \$13.258 million design-build recommended award compares favorably to 2008 \$18.043 million Unsolicited Proposal.

**From 2012-2013 Adopted Capital Plan**

**WIDEN SW 137 AVENUE FROM US-1 TO SW 184 STREET**

**PROJECT # 604990**

Widen road from two to four lanes on three miles of roadway

LOCATION: SW 137 Ave from US-1 to SW 184 St, Unincorporated Miami-Dade County

DISTRICT LOCATED: 8

DISTRICT(s) SERVED: 8, 9

ESTIMATED ANNUAL OPERATING IMPACT: Minimal

Revenue Schedule	Prior Years	2012-13	2013-14	2014-15	2015-16	2016-17	2017-18	Future	Total
PTP Bonds	4,529	6,565	5,400	434	0	0	0	0	16,929
Charter County Transit System Surtax	14	0	0	0	0	0	0	0	14
<b>Total Revenue:</b>	<b>4,543</b>	<b>6,565</b>	<b>5,400</b>	<b>434</b>	<b>0</b>	<b>0</b>	<b>0</b>	<b>0</b>	<b>16,942</b>
Expenditure Schedule:	Prior Years	2012-13	2013-14	2014-15	2015-16	2016-17	2017-18	Future	Total
Planning and Design	2,543	565	0	0	0	0	0	0	3,108
Construction	2,000	6,000	5,400	434	0	0	0	0	13,834
<b>Total Expenditures:</b>	<b>4,543</b>	<b>6,565</b>	<b>5,400</b>	<b>434</b>	<b>0</b>	<b>0</b>	<b>0</b>	<b>0</b>	<b>16,942</b>

Contracts (See Appendix for fuller listing of Trust-approved contracts)

20040343 SW 137 Avenue, from US-1 to SW 200 Street

20090003 Unsolicited Proposal for Design, Build and Finance of the PTP SW 137 Avenue, from US-1 to SW 200 Street

**g) SW 137 Avenue (HEFT to US-1), Widen from 2 to 4 Lanes**

This project is 14% complete, and currently is in design stage with ROW Acquisition also underway. Total project cost is \$8.890 million (reduced from \$10.166 million in FY11 and FY12 Plans) and funded from the PTP Surtax, with \$1.253 million expended on the project to date. Expected completion date is now February 2016 due to extended time for ROW acquisition process, versus December 2014 in FY11 and FY12 Plans.

The following from the current (FY13) Approved Capital Budget shows estimated cost for non-ROW portion at \$7.606 million, which is lowered from \$9.684 million shown in FY12 Five Year Plan Update and \$9.792 million shown in FY11 Initial Five Year Plan.

**From 2012-2013 Adopted Capital Plan**

**WIDEN SW 137 AVENUE FROM HOMESTEAD EXTENSION OF THE FLORIDA TURNPIKE (HEFT) TO US-1**

**PROJECT # 601910**

Widen road from two lanes to four lanes on one mile of roadway

LOCATION: SW 137 Ave from HEFT to US-1, Unincorporated Miami-Dade County

DISTRICT LOCATED: 8, 9

ESTIMATED ANNUAL OPERATING IMPACT: Minimal

DISTRICT(S) SERVED: 8,9

Revenue Schedule	Prior Years	2012-13	2013-14	2014-15	2015-16	2016-17	2017-18	Future	Total
PTP Bonds	891	1,000	4,400	1,302	0	0	0	0	7,593
Charter County Transit System Surtax	13	0	0	0	0	0	0	0	13
<b>Total Revenue:</b>	<b>904</b>	<b>1,000</b>	<b>4,400</b>	<b>1,302</b>	<b>0</b>	<b>0</b>	<b>0</b>	<b>0</b>	<b>7,606</b>
Expenditure Schedule:	Prior Years	2012-13	2013-14	2014-15	2015-16	2016-17	2017-18	Future	Total
Planning and Design	704	0	0	0	0	0	0	0	704
Construction	200	1,000	4,400	1,302	0	0	0	0	6,902
<b>Total Expenditures:</b>	<b>904</b>	<b>1,000</b>	<b>4,400</b>	<b>1,302</b>	<b>0</b>	<b>0</b>	<b>0</b>	<b>0</b>	<b>7,606</b>

Contract (See Appendix for fuller listing of Trust-approved contracts)

20040344

SW 137 Avenue, from HEFT to US-1



#### h) SW 312 Street (SW 187 Avenue to SW 177 Avenue), Widen to 5 Lanes

This project remains in planning stage. City of Homestead has made a preliminary request to move funding to Mowry Drive (SW 320 St). The budget is \$6.699 million, to be funded from PTP Surtax revenues. A total of \$14,000 has been expended on this project. The above amounts are unchanged from FY11 and FY12 Five Year Plans.

The County project is pending a formal recommendation from the City and remains targeted for completion in May 2015 as shown in FY12 Five Year Plan Update; compared to October 2013 shown in FY11 Five Year Plan reflects extended time for Right of Way acquisitions.

The following from the current (FY13) Approved Capital Budget shows total estimated cost for non-ROW portion at \$5.734 million, which is unchanged from FY11 and FY12 Five Year Plans.

##### From 2012-2013 Adopted Capital Plan

##### WIDEN SW 312 STREET FROM SW 177 AVENUE TO SW 187 AVENUE

PROJECT # 603130

Widen road to five lanes on one mile of roadway

LOCATION: SW 312 St from SW 177 Ave to SW 187 Ave, Homestead

DISTRICT LOCATED: 8

ESTIMATED ANNUAL OPERATING IMPACT: Minimal

DISTRICT(s) SERVED: 8

Revenue Schedule	Prior Years	2012-13	2013-14	2014-15	2015-16	2016-17	2017-18	Future	Total
PTP Bonds	0	443	5,280	0	0	0	0	0	5,723
Charter County Transit System Surtax	11	0	0	0	0	0	0	0	11
<b>Total Revenue:</b>	<b>11</b>	<b>443</b>	<b>5,280</b>	<b>0</b>	<b>0</b>	<b>0</b>	<b>0</b>	<b>0</b>	<b>5,734</b>
Expenditure Schedule:	Prior Years	2012-13	2013-14	2014-15	2015-16	2016-17	2017-18	Future	Total
Planning and Design	11	443	0	0	0	0	0	0	454
Construction	0	0	5,280	0	0	0	0	0	5,280
<b>Total Expenditures:</b>	<b>11</b>	<b>443</b>	<b>5,280</b>	<b>0</b>	<b>0</b>	<b>0</b>	<b>0</b>	<b>0</b>	<b>5,734</b>

**i) SW 87 Avenue (SW 216 Street to SW 168 Street), Widen From 2 to 4 Lanes – now Old Cutler Road and Caribbean Boulevard (Amendment R-034-08)**

The PTP Amendment replaced this project with the projects slated for Old Cutler Road curbs and gutters plus traffic operational improvements (SW 87 Avenue to SW 97 Avenue), \$7.713 million, and Caribbean Boulevard widen from 2 to 3 lanes (SW 87 Avenue to Coral Sea Road), \$11.186 million; both unchanged from FY11 and FY12 Plans. Expended to date is \$1.184 million and \$58,000, respectively. A JPA with Town of Cutler Bay was approved April 2009, with the Town assuming management of these projects.

The Old Cutler Road project (14% complete) includes roadway expansion, beautification, and improvements to include curb and gutters, a continuous storm drainage system, enhancements to existing shared use paths, enhanced street lighting, signalization and landscaping. In addition, the project will also provide for two traffic circles on Old Cutler Road, one replacing the current signalized intersection at SW 87 Avenue, and the second at the intersection with SW 97 Avenue. Anticipated ongoing annual maintenance and operational costs are approximately \$12,877 and \$7,783, respectively. The Caribbean Boulevard project is 1% complete (60% Design).

The following from the current (FY13) Approved Capital Budget for Old Cutler Road project shows total estimated cost for non-ROW portion at \$7.886 million, which is slightly decreased from \$7.900 million shown in FY11 and FY12 Five Year Plans. Similarly, the FY13 Budget info shows Caribbean Boulevard project non-ROW portion at \$11.188, which is slightly revised from \$11.186 million in FY11 and FY12 Plans.

**From 2012-2013 Adopted Capital Plan**

**IMPROVEMENTS ON OLD CUTLER ROAD FROM SW 87 AVENUE TO SW 97 AVENUE**

**PROJECT # 603050**

Resurface 1.25 miles of roadway, enhance bike path, install localized storm drainage, install pavement markings as well as various intersection improvements, and construct two traffic calming circles

LOCATION: SW 87 Ave to SW 97 Ave on Old Cutler Rd, Unincorporated Miami-Dade County

DISTRICT LOCATED: 8

ESTIMATED ANNUAL OPERATING IMPACT: Minimal

DISTRICT(S) SERVED: 8

Revenue Schedule	Prior Years	2012-13	2013-14	2014-15	2015-16	2016-17	2017-18	Future	Total
PTP Bonds	5,450	2,436	0	0	0	0	0	0	7,886
Expenditure Schedule:	Prior Years	2012-13	2013-14	2014-15	2015-16	2016-17	2017-18	Future	Total
Planning and Design	450	0	0	0	0	0	0	0	450
Construction	5,000	2,436	0	0	0	0	0	0	7,436
<b>Total Expenditures:</b>	<b>5,450</b>	<b>2,436</b>	<b>0</b>	<b>0</b>	<b>0</b>	<b>0</b>	<b>0</b>	<b>0</b>	<b>7,886</b>

**From 2012-2013 Adopted Capital Plan**

**WIDEN CARIBBEAN BLVD FROM CORAL SEA ROAD TO SW 87 AVENUE**

**PROJECT # 608480**

Widen road from two lanes to four lanes on 1.76 miles of roadway

LOCATION: Caribbean Blvd from Coral Sea Rd to SW 87 Ave, Cutler Bay

DISTRICT LOCATED: 8

ESTIMATED ANNUAL OPERATING IMPACT: Minimal

DISTRICT(S) SERVED: 8

Revenue Schedule	Prior Years	2012-13	2013-14	2014-15	2015-16	2016-17	2017-18	Future	Total
PTP Bonds	6,188	5,000	0	0	0	0	0	0	11,188
Expenditure Schedule:	Prior Years	2012-13	2013-14	2014-15	2015-16	2016-17	2017-18	Future	Total
Planning and Design	1,002	0	0	0	0	0	0	0	1,002
Construction	5,186	5,000	0	0	0	0	0	0	10,186
<b>Total Expenditures:</b>	<b>6,188</b>	<b>5,000</b>	<b>0</b>	<b>0</b>	<b>0</b>	<b>0</b>	<b>0</b>	<b>0</b>	<b>11,188</b>





**j) SW 216 Street (Florida's Turnpike to SW 127 Avenue); Curbs and Gutters, Traffic Operational Improvements**

This project has design stage completed and is approximately 18% complete overall. Total cost is \$14.956 million (increased from \$12.202 million shown in FY12 Plan and \$12.180 million in FY11 Plan) and funded by the PTP Surtax. Total expended to date is \$2.711 million. Completion expected April 2016 (16 months later than December 2014 shown in FY12 Plan and 30 months later than October 2013 shown in FY11 Plan Table B).

The project involves reconstructing the existing roadway to a two-lane divided highway with a raised (curbed) landscaped median, bicycle lanes, on-street parking, traffic circle, sidewalks, curbs and gutters, a new storm drainage system, signalization, pavement markings and signage, and decorative street lighting. It also provides a safe drop off for students at a middle school. The project was divided in two phases in order to expedite construction of those segments which would not require right-of-way acquisition. Phase I, from SW 112 Avenue to the Florida Turnpike, was completed in May 2012. Phase II, from SW 127 Avenue to SW 112 Avenue, is currently in the process of acquiring the required right-of-way parcels.

The following from the current (FY13) Approved Capital Budget shows total estimated cost for non-ROW portion at \$11.691 million, which is increased from \$10.183 million shown in FY12 Five Year Plan Update and \$10.080 million shown in FY11 Initial Five Year Plan.

**From 2012-2013 Adopted Capital Plan**

**IMPROVEMENTS ON SW 216 STREET FROM THE FLORIDA TURNPIKE TO SW 127 AVENUE**

**PROJECT # 6010390**

Construct curbs, gutters, and traffic operational improvements for one mile of roadway

LOCATION: SW 216 St from Florida Turnpike to SW 127 Ave, Unincorporated Miami-Dade County

DISTRICT LOCATED: 8, 9

ESTIMATED ANNUAL OPERATING IMPACT: Minimal

DISTRICT(S) SERVED: 8,9

Revenue Schedule	Prior Years	2012-13	2013-14	2014-15	2015-16	2016-17	2017-18	Future	Total
Road Impact Fees	80	0	0	0	0	0	0	0	80
PTP Bonds	1,329	50	200	4,500	5,000	505	0	0	11,584
Charter County Transit System Surtax	27	0	0	0	0	0	0	0	27
<b>Total Revenue:</b>	<b>1,436</b>	<b>50</b>	<b>200</b>	<b>4,500</b>	<b>5,000</b>	<b>505</b>	<b>0</b>	<b>0</b>	<b>11,691</b>
Expenditure Schedule:	Prior Years	2012-13	2013-14	2014-15	2015-16	2016-17	2017-18	Future	Total
Planning and Design	1,384	0	0	0	0	0	0	0	1,384
Construction	52	50	200	4,500	5,000	505	0	0	10,307
<b>Total Expenditures:</b>	<b>1,436</b>	<b>50</b>	<b>200</b>	<b>4,500</b>	<b>5,000</b>	<b>505</b>	<b>0</b>	<b>0</b>	<b>11,691</b>

Contract: (See Appendix for fuller listing of Trust-approved contracts)

20040348 SW 216 ST FL TURNPIKE TO SW 127 AVE

**k) SW 176 Street (US-1 to SW 107 Avenue); Curbs and Gutters, Traffic Operational Improvements**

This project has design stage completed and is approximately 16% complete overall (percent of project funding spent and the amount of funding expended as a percentage of full project estimated amount). ROW continues in process. Total cost is increased to \$6.106 million (from FY11 and FY12 Plans' \$5.815 million) and funded by the PTP Surtax. Total expended to date is \$956,000. Completion expected June 2015, which is four months later than February 2015 shown in FY11 and FY12 Plans.

The project involves reconstructing the existing roadway to include a raised landscaped median, bicycle facilities, sidewalks, curbs and gutters, a continuous storm drainage system, signalization, pavement markings and signage, and roadway lighting. The anticipated ongoing annual maintenance and operation costs will be approximately \$7,078 and \$4,081, respectively.

The following from the current (FY13) Approved Capital Budget shows total estimated cost for non-ROW portion at \$5.046 million, which is slightly increased from \$5.079 million shown in FY11 and FY12 Five Year Plans.

**From 2012-2013 Adopted Capital Plan**

**IMPROVEMENTS ON SW 176 STREET FROM US-1 TO SW 107 AVENUE**

**PROJECT # 607460**

Construct curbs, gutters, and traffic operation improvements on one mile of roadway

LOCATION: SW 176 St from US-1 to SW 107 Ave, Unincorporated Miami-Dade County

DISTRICT LOCATED: 8, 9

ESTIMATED ANNUAL OPERATING IMPACT: Minimal

DISTRICT(S) SERVED: 8, 9

Revenue Schedule	Prior Years	2012-13	2013-14	2014-15	2015-16	2016-17	2017-18	Future	Total
PTP Bonds	580	500	2,000	1,941	0	0	0	0	5021
Charter County Transit System Surtax	25	0	0	0	0	0	0	0	25
<b>Total Revenue:</b>	<b>605</b>	<b>500</b>	<b>2,000</b>	<b>1,941</b>	<b>0</b>	<b>0</b>	<b>0</b>	<b>0</b>	<b>5046</b>
Expenditure Schedule:	Prior Years	2012-13	2013-14	2014-15	2015-16	2016-17	2017-18	Future	Total
Planning and Design	555	0	0	0	0	0	0	0	555
Construction	50	500	2,000	1,941	0	0	0	0	4491
<b>Total Expenditures:</b>	<b>605</b>	<b>500</b>	<b>2,000</b>	<b>1,941</b>	<b>0</b>	<b>0</b>	<b>0</b>	<b>0</b>	<b>5,046</b>

Contracts (See Appendix for fuller listing of Trust-approved contracts)

20040349 SW 176 ST US 1 TO SW 107 AVE

20070619 PTP Roadway Improvements Along SW 176 Street, from SW 107 Avenue to US-1, Within Commission District 9

**l) SW 180 Street (SW 147 Avenue to SW 137 Avenue); Curbs and Gutters, Traffic Operational Improvements**

This work on this project is complete. The cost of \$1.597 million is funded by PTP, with \$1.083 million expended to date (difference is pending closeout and final payment).

**m) SW 264 Street (US-1 to SW 137 Avenue); Curbs and Gutters, Traffic Operational Improvements**

This project has design stage completed and is approximately 19% complete overall (percent of project funding spent and the amount of funding expended as a percentage of full project estimated amount). ROW is in process at 50%. Total cost is \$6.387 million (compared to \$5.964 million from both FY11 and Y12 Plans) and funded by the PTP Surtax. Expended to date is \$1.191 million. Completion expected October 2015 (four months deferred from June 2015 shown in FY12 Plan Update and compared to December 2013 expected completion shown in FY11 Initial Plan), primarily due to extended time for Right of Way acquisitions.

The project involves widening the existing roadway to a two-lane divided highway with a raised landscaped median, bicycle lanes, on-street parking, sidewalks, curbs and gutters, a continuous storm drainage system, signalization, pavement markings and signage, and roadway lighting. It also provides a safe drop off for students at an elementary school. The anticipated ongoing annual maintenance and operation costs will be approximately \$11,432 and \$5,907, respectively.

The following from the current (FY13) Approved Capital Budget shows total estimated cost for non-ROW portion at \$4.785 million, which is slightly revised from \$4.811 million shown in FY12 Five Year Plan Update and \$5.014 million shown in FY11 Initial Five Year Plan.

**From 2012-2013 Adopted Capital Plan****IMPROVEMENTS ON SW 264 STREET FROM US-1 TO SW 137 AVENUE**

PROJECT # 6010440

Construct curbs, gutters, and traffic operational improvements on one mile of roadway

LOCATION: SW 264 St from US-1 to SW 137 Ave, Unincorporated Miami-Dade County

DISTRICT LOCATED: 9

ESTIMATED ANNUAL OPERATING IMPACT: Minimal

DISTRICT(S) SERVED: 9

Revenue Schedule	Prior Years	2012-13	2013-14	2014-15	2015-16	2016-17	2017-18	Future	Total
PTP Bonds	532	785	2,700	700	0	0	0	0	4,717
Charter County Transit System Surtax	68	0	0	0	0	0	0	0	68
<b>Total Revenue:</b>	<b>600</b>	<b>785</b>	<b>2,700</b>	<b>700</b>	<b>0</b>	<b>0</b>	<b>0</b>	<b>0</b>	<b>4,785</b>
Expenditure Schedule:	Prior Years	2012-13	2013-14	2014-15	2015-16	2016-17	2017-18	Future	Total
Planning and Design	600	0	0	0	0	0	0	0	600
Construction	0	785	2700	700	0	0	0	0	4,185
<b>Total Expenditures:</b>	<b>600</b>	<b>785</b>	<b>2700</b>	<b>700</b>	<b>0</b>	<b>0</b>	<b>0</b>	<b>0</b>	<b>4,785</b>

Contracts (See Appendix for fuller listing of Trust-approved contracts)

20040350 SW 264 ST US 1 TO SW 137 AVE

20070613 PTP Roadway Improvements Along SW 264 Street, from US-1 to SW 137 Avenue - located within Commission District 9

It should be noted that additional aspects are unfunded for this roadway and not included in PTP Exhibit 1, beyond the divided highway and operational improvements outlined above. Recent County Capital Budgets including FY13 identify "Improvements to SW 264 Street from US1 to SW 147 Avenue" that is described as "Improve two lane road with center turn lane"; it is priority #29 for PWW, with cost estimated at \$2.280 million (was #38 and \$1.816 million in FY12 Budget). Following is from Unfunded needs section of FY13 budget.

**IMPROVEMENTS TO SW 264 STREET FROM US1 TO SW 147 AVENUE**

Estimated Project Cost: 2,280

DESCRIPTION: Improve two lane road with center turn lane

LOCATION: SW 264 St from US1 to SW 147 Ave

Unincorporated Miami-Dade County

PRIORITY: 029

COMM. DISTRICT PHYSICALLY LOCATED: 8

COMM. DISTRICT(S) SERVED: 8

**WIDEN SW 268/264 STREET FROM SW 112 AVENUE TO SW 147 AVENUE**

Estimated Project Cost: 14,136

DESCRIPTION: Construct turn lanes along 3.5 miles of roadway

PRIORITY: 012

LOCATION: SW 268/264 St from SW 112 Ave to SW 147 Ave

Unincorporated Miami-Dade County

COMM. DISTRICT PHYSICALLY LOCATED: 8

COMM. DISTRICT(S) SERVED: 8 9

**n) SW 127 Avenue (SW 120 Street to SW 88 Street), Widen to 4 Lanes With Median, Swales and Frontage Road**

This project is completed. The project cost is \$13.552 million, with \$13.031 million expended to date. Additionally, RIF funding in the amount of \$576,000 was utilized for the design. To complete project is \$522,000 for any pending payments and project closeout.

**o) SW 136 Street, Street Widening From 2 to 4 Lanes**

- 1) SW 157 Avenue to SW 139 Avenue (County completed work)
- 2) SW 139 Avenue to SW 127 Avenue (Completed by Developer)
- 3) SW 127 Avenue to HEFT (Not Feasible- Alternative being analyzed by MDX)

This project was originally planned as a joint project with developer's scheduled to construct segments of the corridor. The County ultimately constructed the segment from SW 157 Avenue to SW 139 Avenue. The segment from SW 139 Avenue to SW 127 Avenue was completed by developers. The segment from SW 127 Avenue to the HEFT was determined to be not feasible due to ROW constraints and the required displacement of a number of residences. MDX has completed a PD&E study of the possible construction of a State Road 874

(Don Shula Expressway) Ramp Connector to SW 136 Street (study area from the SR874/HEFT Interchange to SW 137 Avenue and from 128 to 136 Streets). The MPO at its April 2012 meeting endorsed the three-part LRTP Amendment submitted by MDX. First, it changes the SR874 Ramp Connector project limits from “SW 136<sup>th</sup> Street to SR874” to “SW 128<sup>th</sup> Street to SR874.” Second, updates LRTP Priority from IV to II, and thus being funded to move into construction to coincide with Turnpike widening project scheduled for design build in 2013. And third, updates estimated project cost from \$361 million to \$102 million which reflects the SW 128<sup>th</sup> Street alignment, now deemed the preferred from the PD&E study, was less expensive due to the required bridge sections to the SW 128<sup>th</sup> Street connection versus 136<sup>th</sup> Street.

This project is complete. The total Surtax funding for the project was \$7.272 million.

The total amount of \$7.272 million reflects only the cost for County to construct its one segment. PTP Surtax is the only source of funding identified for the project.

**p) NW 97 Avenue (NW 41 Street to NW 25 Street) (Deleted from PTP Amendment R-531-06), Widen From 2 to 4 Lanes**

This project was removed from the PTP because the roadway was proposed to be constructed by a developer. However, due to the economic downturn the developer was unable to complete the project. Subsequently, PWWM completed the project utilizing RIF funds. The original estimate was for \$5.5 million and the total Surtax funding expended \$104,000.

**q) NW 170 Street (NW 87 to 77 Avenues) (Deleted from PTP Amendment R-966-03), Widen From 2 to 4 Lanes**

Deleted from Exhibit 1 per Commissioner request. No funding expended.





## 5. Narrowing of Roadways

### a) **Grand Avenue (SW 37 Avenue to SW 32 Avenue), Narrow From 4 to 2 Lanes**

This project was completed under a JPA with the City of Miami. Total project cost was \$2.032 million and funded by Surtax.

### b) **SW 62 Avenue (SW 70 Street to SW 64 Street), Narrow From 5 to 2 Lanes**

The construction of the project is complete and the project is pending close out. The project cost is estimated to be \$2.847 million (reduced from \$3.316 million shown in FY11 Five Year Plan) and PTP Surtax revenue is the sole source of funding, with \$2.053M expended to date on the project.



## 6. New Bridge

### a) NW 138 Street Bridge (Bridge Over Miami River Canal at NW 138 Street)

This project is complete. Total cost is currently estimated \$6.530 million (unchanged from FY12 Plan and reduced from \$6.530 million shown in FY11 Five Year Plan). PTP Surtax revenue is the only source of funding for the project with \$6 million expended.

The following from the current (FY13) Approved Capital Budget shows total estimated cost for non-ROW portion at \$4.640 million, which is unchanged from FY12 Five Year Plan Update and lower than \$6.530 million shown in FY11 Initial Five Year Plan.



#### From 2012-2013 Adopted Capital Plan

#### CONSTRUCTION OF NW 138 STREET BRIDGE OVER THE MIAMI RIVER CANAL

PROJECT # 604860

Construct a new bridge over the Miami River Canal at NW 138 St

LOCATION: NW 138 St and the Miami River Canal, Unincorporated Miami-Dade County

DISTRICT LOCATED: 12

ESTIMATED ANNUAL OPERATING IMPACT: Minimal

DISTRICT(S) SERVED: 12, 13

Revenue Schedule	Prior Years	2012-13	2013-14	2014-15	2015-16	2016-17	2017-18	Future	Total
FDOT Funds	114	0	0	0	0	0	0	0	114
PTP Bonds	3,942	500	0	0	0	0	0	0	4,442
Charter County Transit System Surtax	84	0	0	0	0	0	0	0	84
<b>Total Revenue:</b>	4,140	500	0	0	0	0	0	0	4,640
Expenditure Schedule:	Prior Years	2012-13	2013-14	2014-15	2015-16	2016-17	2017-18	Future	Total
Planning and Design	600	0	0	0	0	0	0	0	600
Construction	3,540	500	0	0	0	0	0	0	4,040
<b>Total Expenditures:</b>	4,140	500	0	0	0	0	0	0	4,640

Contract (See Appendix for fuller listing of Trust-approved contracts)

20090024

PTP Construction of NW 138 Street Bridge over the Miami River Canal



## 7. Right of Way Acquisition

The Right of Way Acquisitions for all remaining PWWM PTP Projects are listed separately in the Capital Budget by Commission District. That is, Districts 8, 9 and 12 are shown and were also presented in FY12 Five Year Plan Update and Adopted Capital Budget; District 13 from FY12 Plan Up[ate and Capital Budget no longer shown, as are 2 and 7 from FY11 Initial Plan and Capital Budget.



Changes for each district are the following: District 8, \$5.261 million shown below for FY13 compares to \$4.559 million for FY12 and \$3.701 million in FY11; District 9, \$6.169 in FY13, \$4.325 in both FY12 and FY11; and District 12, \$11.109 FY13, \$11.187 FY12 and \$29.725 FY11.

The costs are included within the estimates shown above, as applicable, in the narrative for each of the projects.

### From 2012-2013 Adopted Capital Plan

#### RIGHTS-OF-WAY ACQUISITION FOR CONSTRUCTION PROJECTS IN COMMISSION DISTRICT 08

PROJECT # 607930

Acquire rights-of-way for construction projects in District 8

LOCATION: Various Sites

DISTRICT LOCATED: 8

ESTIMATED ANNUAL OPERATING IMPACT: Minimal

DISTRICT(s) SERVED: 8

Revenue Schedule	Prior Years	2012-13	2013-14	2014-15	2015-16	2016-17	2017-18	Future	Total
PTP Bonds	3,857	575	812	0	0	0	0	0	5,244
Charter County Transit System Surtax	17	0	0	0	0	0	0	0	17
<b>Total Revenue:</b>	<b>3,874</b>	<b>575</b>	<b>812</b>	<b>0</b>	<b>0</b>	<b>0</b>	<b>0</b>	<b>0</b>	<b>5,261</b>
Expenditure Schedule:	Prior Years	2012-13	2013-14	2014-15	2015-16	2016-17	2017-18	Future	Total
Land/Building Acquisition	3,874	575	812	0	0	0	0	0	5261

# RIGHTS-OF-WAY ACQUISITION FOR CONSTRUCTION PROJECTS IN COMMISSION DISTRICT 09

PROJECT # 6010490

Acquire rights-of-way for construction projects in District 9

LOCATION: Various Sites

DISTRICT LOCATED: 9

ESTIMATED ANNUAL OPERATING IMPACT: Minimal

DISTRICT(s) SERVED: 9

Revenue Schedule	Prior Years	2012-13	2013-14	2014-15	2015-16	2016-17	2017-18	Future	Total
PTP Bonds	3,889	1,725	552	0	0	0	0	0	6,166
Charter County Transit System Surtax	3	0	0	0	0	0	0	0	3
<b>Total Revenue:</b>	<b>3,892</b>	<b>1,725</b>	<b>552</b>	<b>0</b>	<b>0</b>	<b>0</b>	<b>0</b>	<b>0</b>	<b>6,169</b>
Expenditure Schedule:	Prior Years	2012-13	2013-14	2014-15	2015-16	2016-17	2017-18	Future	Total
Land/Building Acquisition	3,892	1,725	552	0	0	0	0	0	6169

## From 2012-2013 Adopted Capital Plan

# RIGHTS-OF-WAY ACQUISITION FOR CONSTRUCTION PROJECTS IN COMMISSION DISTRICT 12

PROJECT # 6010570

Acquire rights-of-way for construction projects in District 12

LOCATION: Various Sites

DISTRICT LOCATED: 12

ESTIMATED ANNUAL OPERATING IMPACT: Minimal

DISTRICT(s) SERVED: 12

Revenue Schedule	Prior Years	2012-13	2013-14	2014-15	2015-16	2016-17	2017-18	Future	Total
FDOT Funds	6,891	0	0	0	0	0	0	0	6,891
Road Impact Fees	799	0	0	0	0	0	0	0	799
PTP Bonds	1,364	2,000	0	0	0	0	0	0	3,364
Charter County Transit System Surtax	55	0	0	0	0	0	0	0	55
<b>Total Revenue:</b>	<b>9,109</b>	<b>2,000</b>	<b>0</b>	<b>0</b>	<b>0</b>	<b>0</b>	<b>0</b>	<b>0</b>	<b>11,109</b>
Expenditure Schedule:	Prior Years	2012-13	2013-14	2014-15	2015-16	2016-17	2017-18	Future	Total
Land/Building Acquisition	9,109	2,000	0	0	0	0	0	0	11,109