

# SW 168 Street



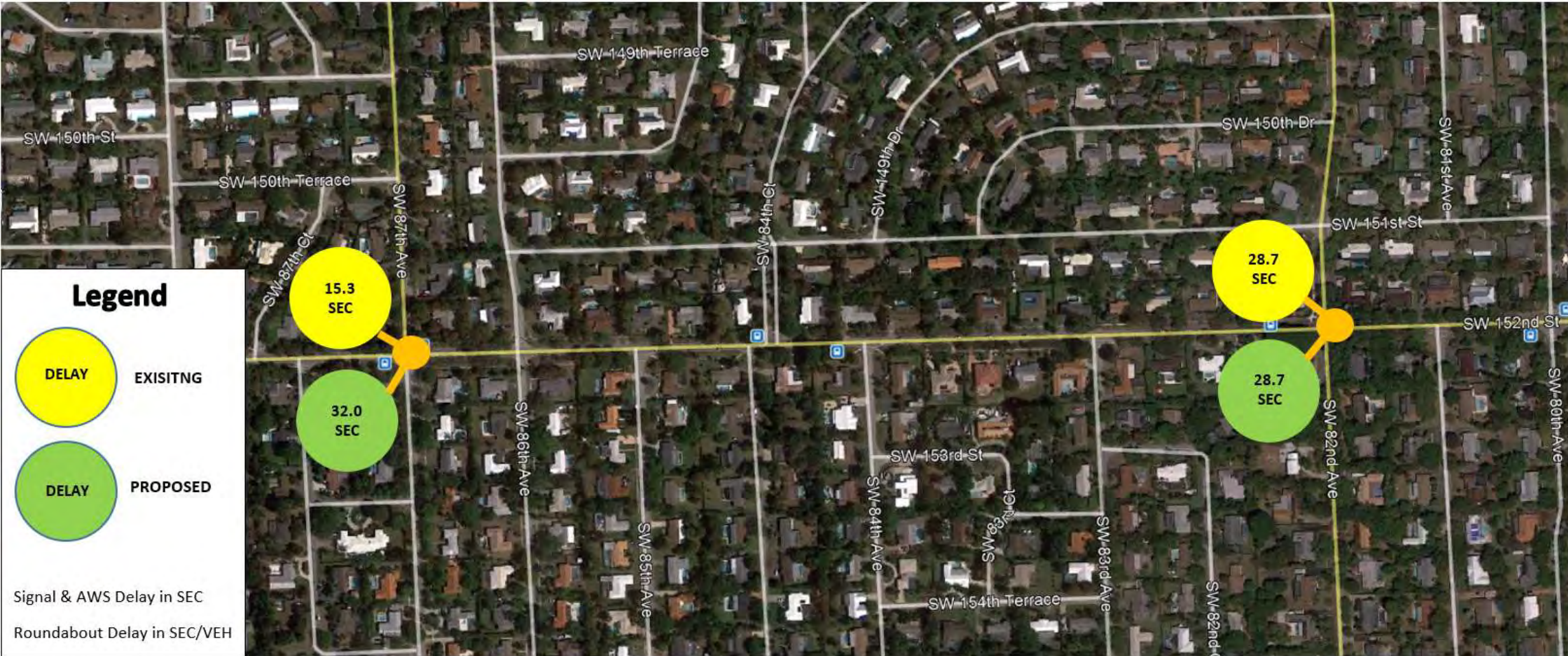


# SW 160 Street





# SW 152 Street





# PALMETTO BAY BRIDGE OPENING IMPACT

AM PEAK

## SW 144 & 141 Street



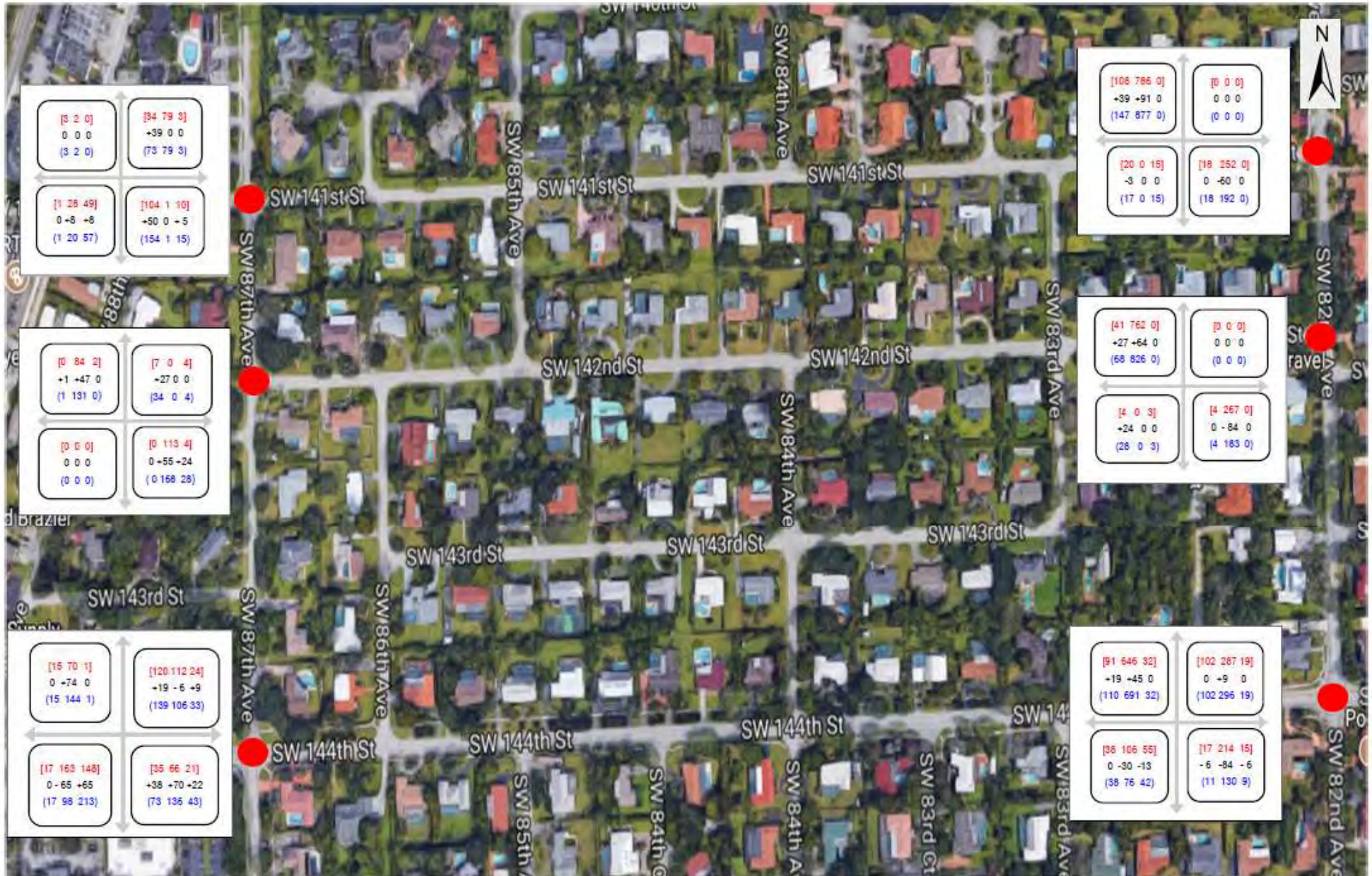
35% of SW 82 Ave NB traffic was shifted to SW 87 Ave



# PALMETTO BAY BRIDGE OPENING IMPACT

PM PEAK

## SW 144 & 141 Street



[8 2 0] 0 0 0 (3 2 0)	[34 79 3] +39 0 0 (73 79 3)
[1 28 49] 0 -6 +8 (1 20 57)	[104 1 10] +50 0 +5 (154 1 15)

[0 84 2] +1 +47 0 (1 131 0)	[7 0 4] -27 0 0 (34 0 4)
[0 0 0] 0 0 0 (0 0 0)	[0 113 4] 0 -55 -24 (0 168 28)

[15 70 1] 0 -74 0 (15 144 1)	[120 112 24] -19 -6 +9 (139 106 33)
[17 163 148] 0 -65 +65 (17 98 213)	[35 66 21] +38 +70 +22 (73 136 43)

[108 786 0] +39 +91 0 (147 877 0)	[0 0 0] 0 0 0 (0 0 0)
[20 0 15] -3 0 0 (17 0 15)	[18 252 0] 0 -60 0 (18 192 0)

[41 762 0] +27 +64 0 (68 826 0)	[0 0 0] 0 0 0 (0 0 0)
[4 0 3] +24 0 0 (28 0 3)	[4 267 0] 0 -84 0 (4 183 0)

[91 646 32] +19 +45 0 (110 691 32)	[102 287 19] 0 +9 0 (102 296 19)
[36 106 55] 0 -30 -13 (38 76 42)	[17 214 15] -6 -84 -6 (11 130 9)





SW 87 AVENUE BETWEEN SW 152 ST AND SW 184 ST CUTTING THRU TRAFFIC

# Time savings

- With previous studies, it was determined that saving delay of 1 min/Veh, on average, represents an overall improvement of 10% delay at the intersection. What does it mean for the current study?:
  - For reference during school recess traffic congestion reduces by 4%
  - SW 82 Ave and SW 168 Street, 4 min/veh in delay reduction will generate a 40% delay reduction at the intersection
  - SW 87 Ave and SW 168 Street, 1 min/veh in delay reduction will generate a 10% delay reduction at the intersection
- This will equate to a reduction of the peak period since more vehicles are going to cross the intersections faster, providing for a higher traffic volume during a shorter period of time.
  - Existing peak period = 4 hrs (6-10am) and 4 hrs (3-7pm)
  - Future peak period = 2.5 hrs for both am and pm peak periods