



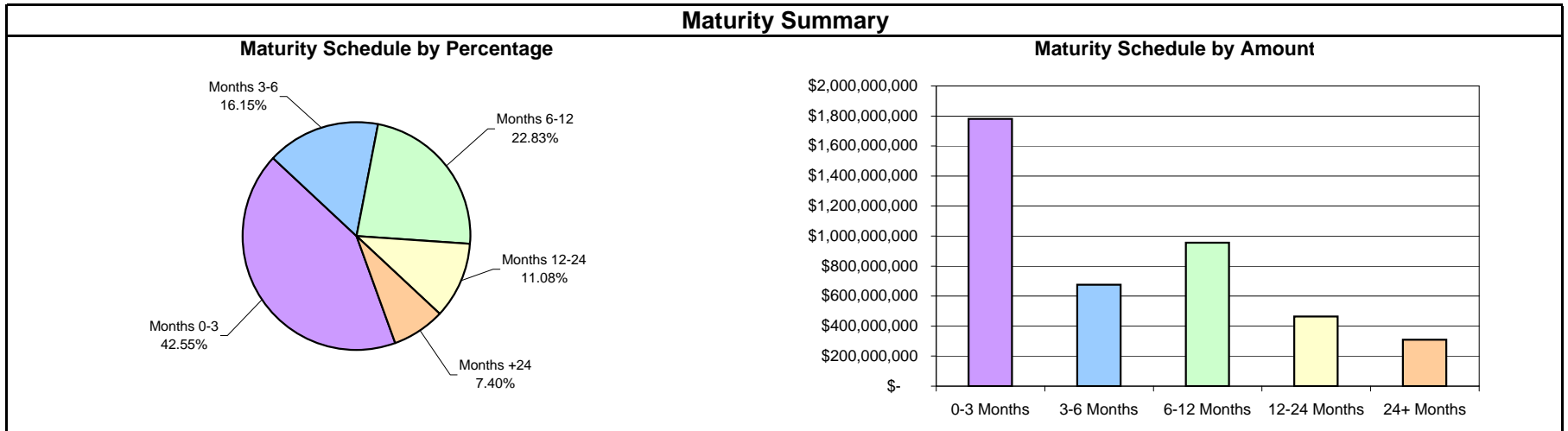
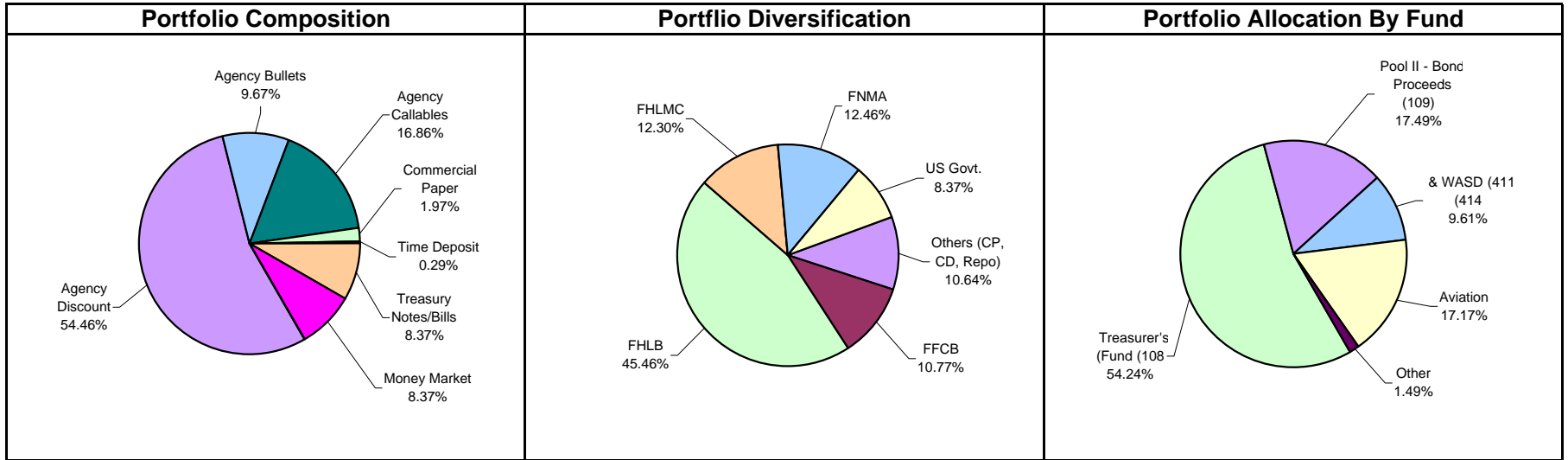
Monthly Summary Investment Report

For the Period Ended

December 31, 2008

 **First Southwest Asset Management**

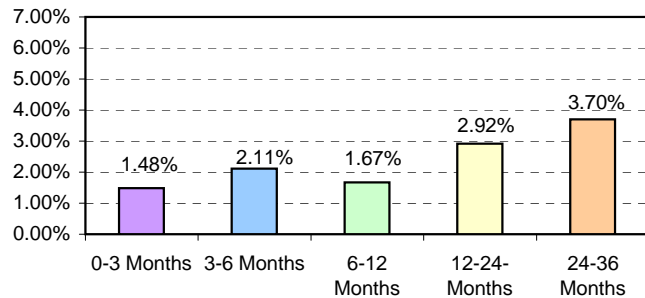
Miami-Dade County Total Portfolio Summary December 31, 2008



**Miami-Dade County
Summary Statement
December 31, 2008**

Portfolio Summary					
	Current 12/31/2008	Previous Month 11/30/2008	Change from Prior Month	Prior Quarter 9/30/2008	Change from Prior Quarter
Par Value	\$ 4,206,569,015.09	\$ 5,024,036,999.71	\$ (817,467,984.62)	\$ 3,755,802,178.78	\$ 450,766,836.31
Book Value	\$ 4,193,362,190.38	\$ 5,007,849,670.27	\$ (814,487,479.89)	\$ 3,743,969,072.73	\$ 449,393,117.65
Market Value	\$ 4,213,625,247.97	\$ 5,020,876,767.12	\$ (807,251,519.15)	\$ 3,745,397,798.17	\$ 468,227,449.80
Market Value as a % of Book Value	100.48%	100.26%	0.22%	100.04%	0.45%
Accrued Interest	\$ 19,852,993.90	\$ 19,348,052.95	\$ 504,940.95	\$ 25,275,576.62	\$ (5,422,582.72)
Total Value (Market Value+ Accrued Interest)	\$ 4,233,478,241.87	\$ 5,040,224,820.07	\$ (806,746,578.20)	\$ 3,770,673,374.79	\$ 462,804,867.08
Interest Earned (Current Month)	\$ 7,438,550.90	\$ 7,313,781.18	\$ 124,769.72	\$ 8,815,418.59	\$ (1,376,867.69)
Interest Earned Fiscal YTD (10/1 - 9/30)	\$ 22,639,950.22	\$ 15,201,511.51	\$ 7,438,438.71	\$ 150,113,436.20	\$ 22,639,950.22
Unrealized Gain (Loss)	\$ 20,263,057.59	\$ 13,027,096.85	\$ 7,235,960.74	\$ 1,428,725.44	\$ 18,834,332.15
Weighted Average Maturity	213.76	172.47	41.29	204.24	9.52
Yield to Maturity	1.95%	1.82%	0.13%	2.81%	-0.86%
Earned Income Yield for Period	1.86%	2.44%	-0.58%	2.87%	-1.02%
Earned Income Yield for Year to Date	2.32%	2.65%	-0.33%	3.73%	-1.41%

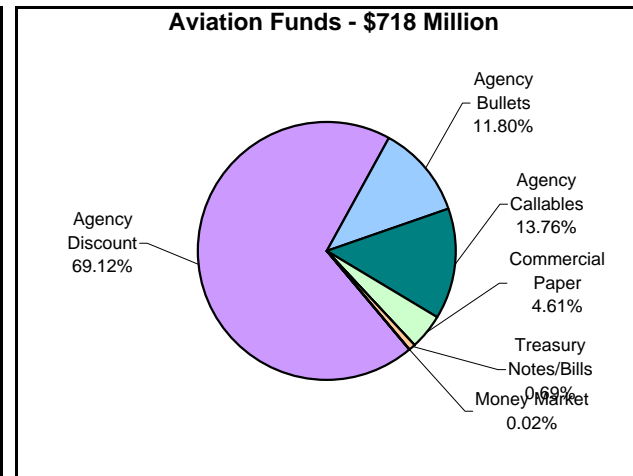
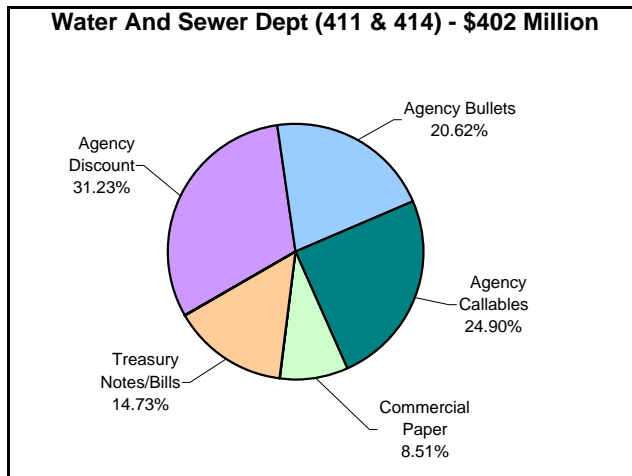
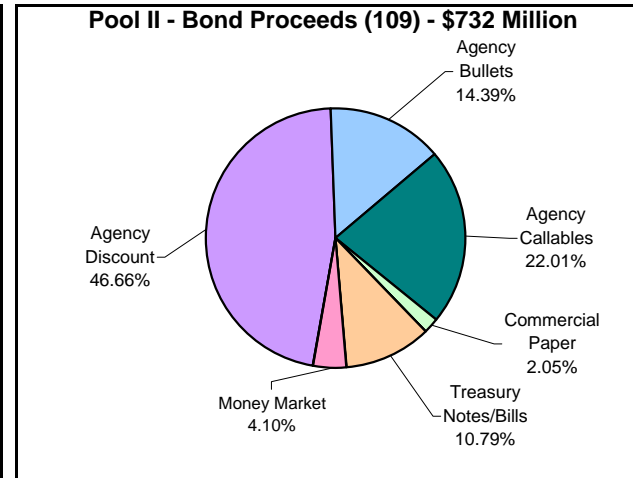
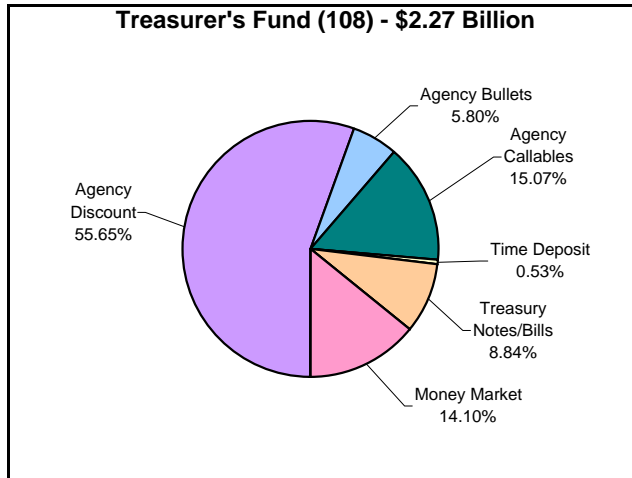
Yield Maturity Breakdown



Policy Compliance

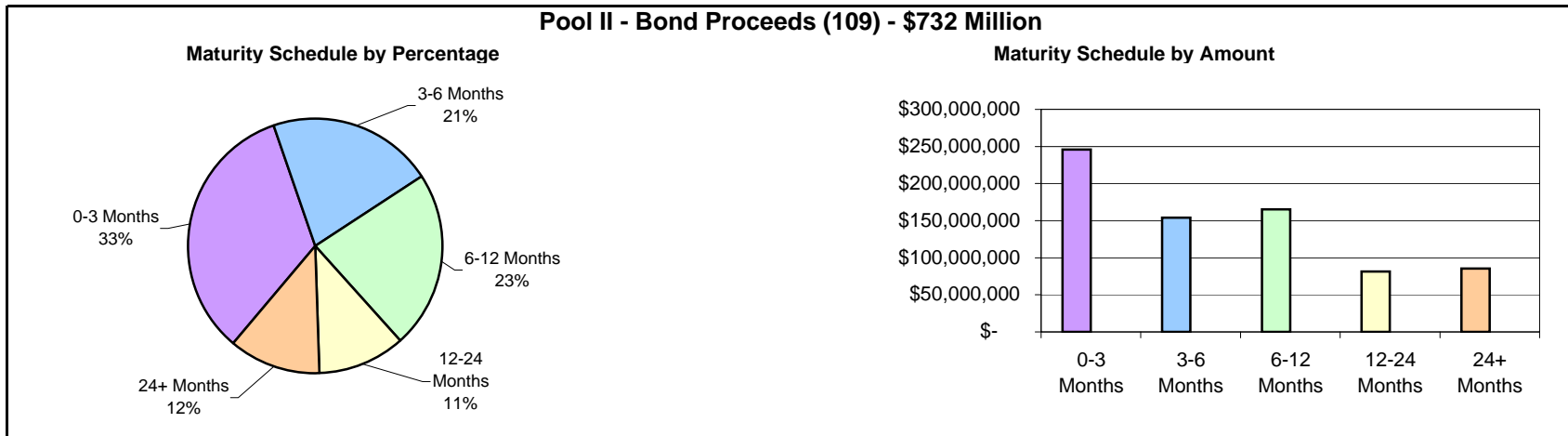
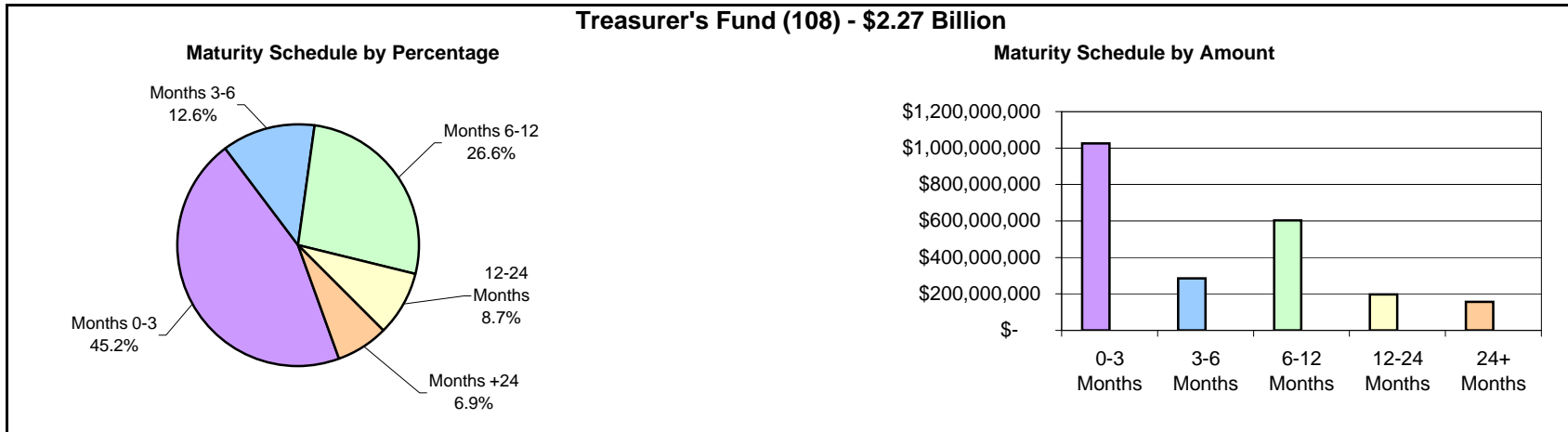
Security Type	% Limit	Current %	Result
Treasuries	100%	8.37%	PASS
Agencies	75%	64.14%	PASS
Agency Callables	25%	16.86%	PASS
Commercial Paper	50%	1.97%	PASS
-CP Single Issuer Max	5%	0.54%	PASS
Banker's Acceptance	25%	0.00%	PASS
Time Deposits	20%	0.29%	PASS
SBA/Investment Pools	50%	0.00%	PASS
Money Market Funds	30%	8.37%	PASS
Repurchase Agreement	20%	0.01%	PASS
Open/Closed End Funds	5%	0.00%	PASS

**Miami-Dade County
Portfolio Composition
December 31, 2008**

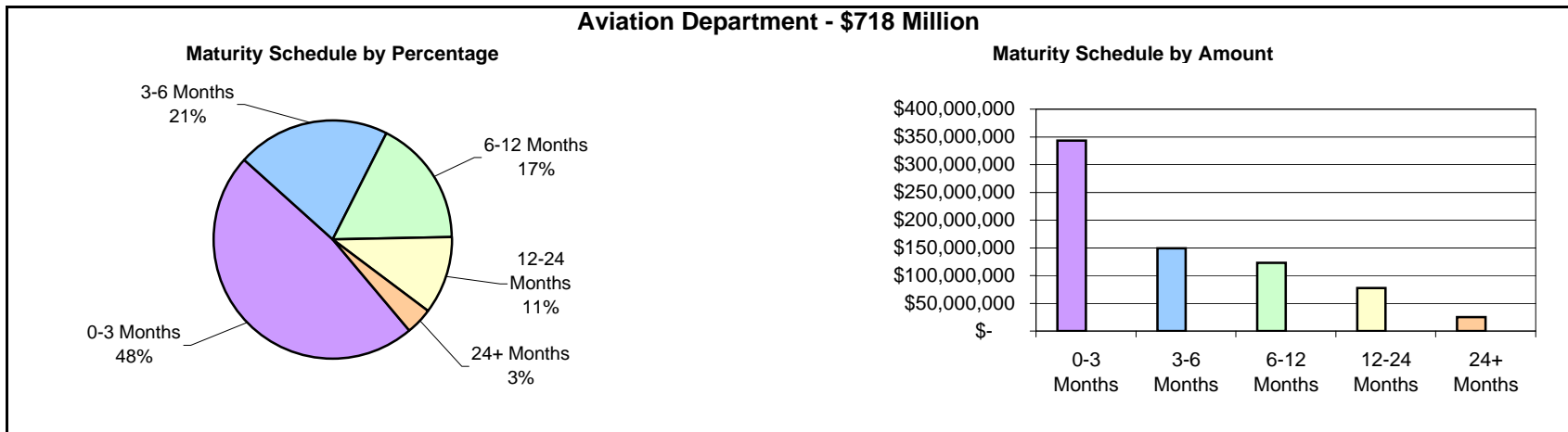
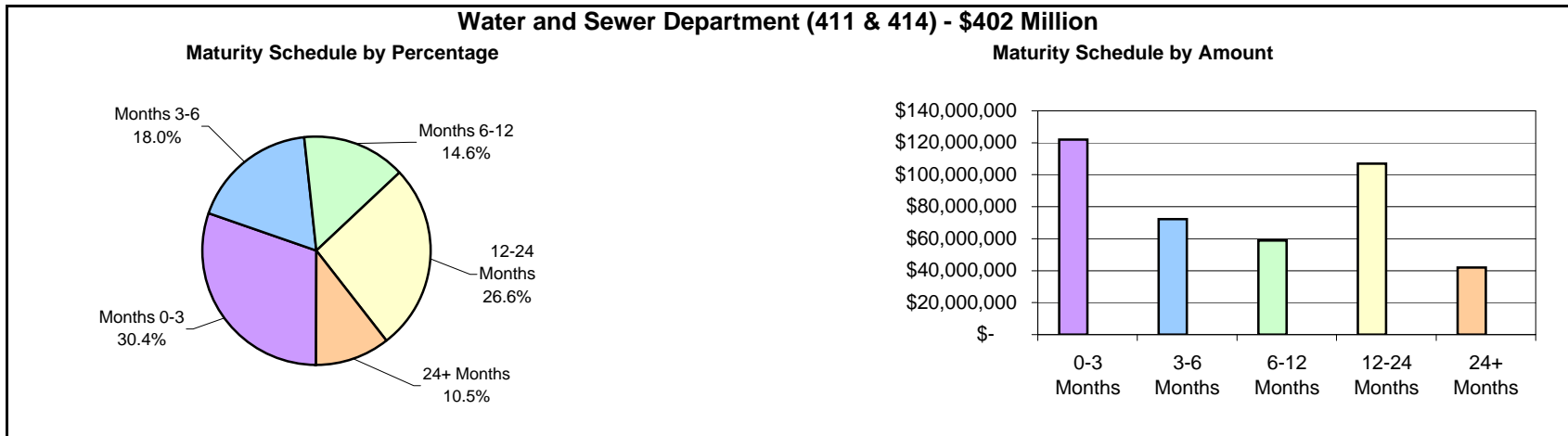


Note: Graphs above do not include miscellaneous funds totaling \$62 million and representing 1.5% of the portfolio.

Miami-Dade County Maturity Breakdown December 31, 2008

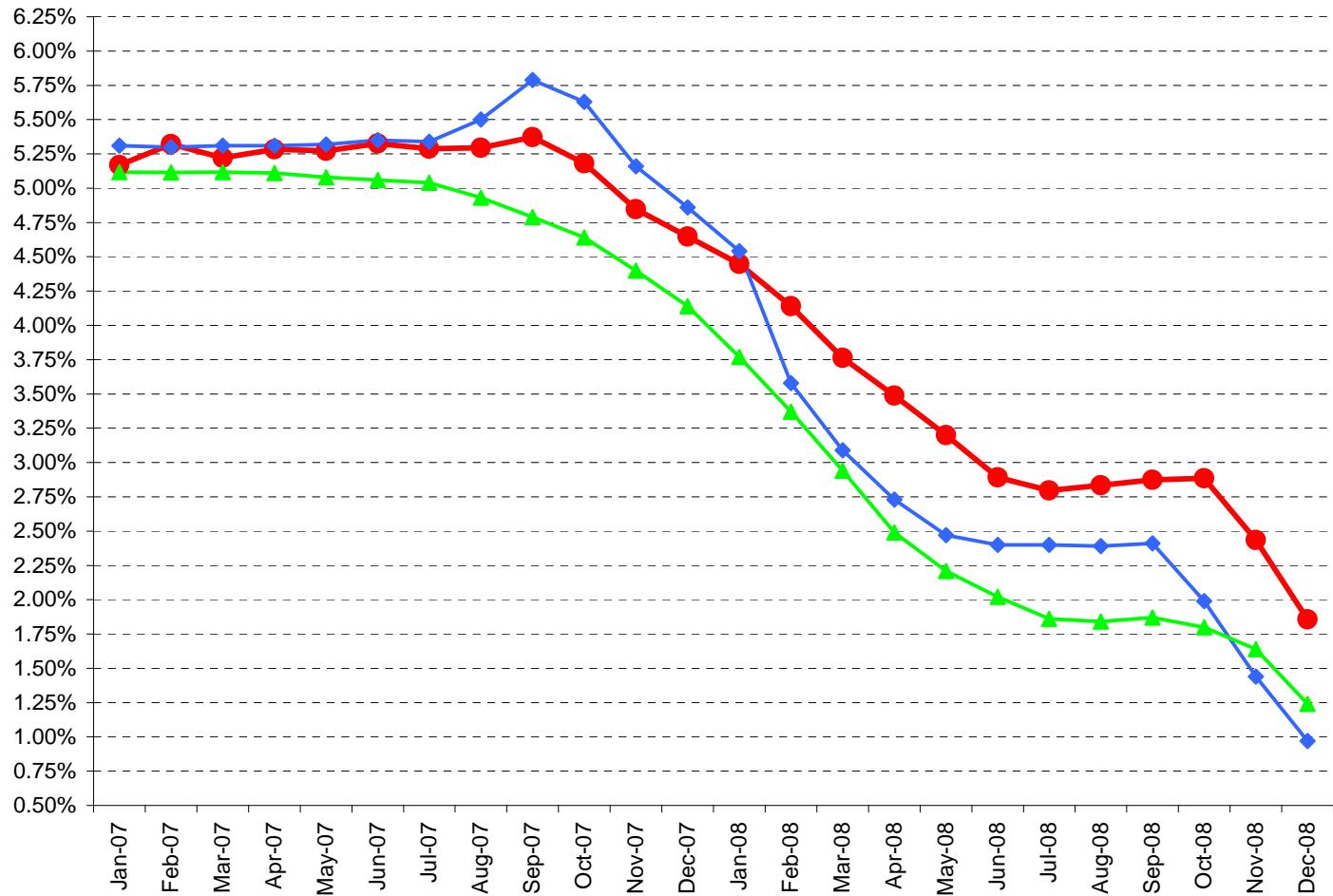


Miami-Dade County Maturity Breakdown December 31, 2008



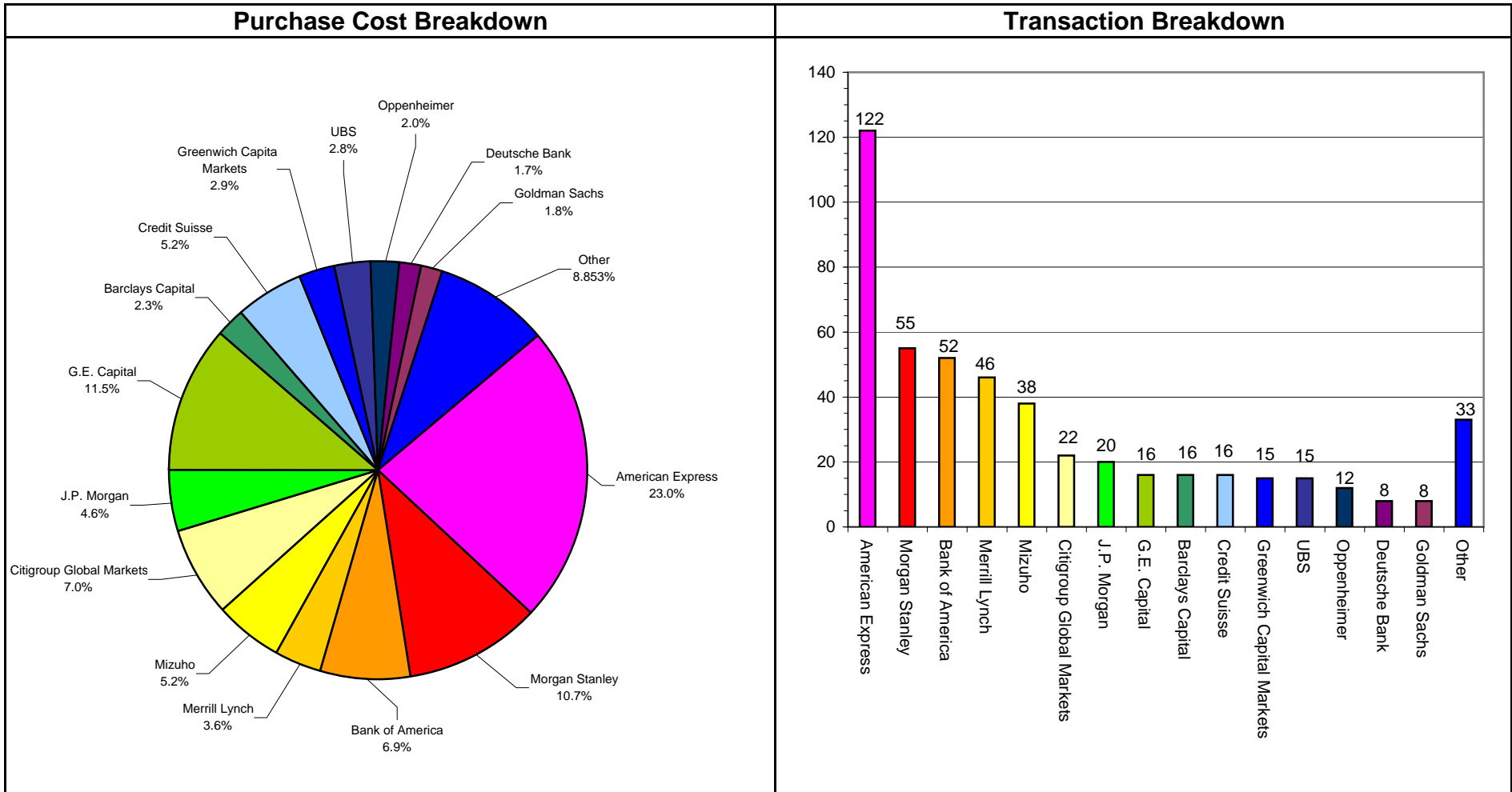
Note: Graphs above do not include miscellaneous funds totaling \$108 million and representing 2.6% of the portfolio.

Miami-Dade County Benchmark Comparisons December 31, 2008



	Jan-07	Feb-07	Mar-07	Apr-07	May-07	Jun-07	Jul-07	Aug-07	Sep-07	Oct-07	Nov-07	Dec-07	Jan-08	Feb-08	Mar-08	Apr-08	May-08	Jun-08	Jul-08	Aug-08	Sep-08	Oct-08	Nov-08	Dec-08
● Miami-Dade - Earned Income Yield	5.17%	5.32%	5.22%	5.28%	5.27%	5.33%	5.29%	5.29%	5.37%	5.18%	4.85%	4.65%	4.45%	4.14%	3.76%	3.49%	3.20%	2.89%	2.80%	2.83%	2.87%	2.89%	2.44%	1.86%
◆ Monthly Avg - Florida SBA Pool	5.31%	5.30%	5.31%	5.31%	5.32%	5.35%	5.34%	5.50%	5.79%	5.63%	5.16%	4.86%	4.54%	3.58%	3.09%	2.73%	2.47%	2.40%	2.40%	2.39%	2.41%	1.99%	1.44%	0.97%
▲ 6-Month Avg of 180-day T-Bill	5.12%	5.11%	5.12%	5.11%	5.08%	5.06%	5.04%	4.93%	4.79%	4.64%	4.40%	4.14%	3.77%	3.37%	2.94%	2.49%	2.21%	2.02%	1.86%	1.84%	1.87%	1.80%	1.64%	1.24%

Miami-Dade County Broker Purchase Distribution December 31, 2008





Detail Security Holdings Report

For the Period Ended

December 31, 2008

MIAMI-DADE COUNTY
REPORT WRITER
AS OF DATE: December 31, 2008
SORTING ORDER: FUND ICC#

INVSMT NUMBER	CUSIP NUMBER	FUND NUMBER	DESCRIPTION	PURCHASE SET DATE	MATURITY DATE	CALL DATE	INTEREST RATE	YTM TRADING	SCHEDULED PAR VALUE	CURRENT BOOK VALUE	PERIOD-END INTEREST ACCRL	MARKET VALUE	UNREALIZED GAIN/LOSS
131855	313385BE5	40	FHLB D N	11/18/2008	1/29/2009		1.000%	1.002%	1,075,000	1,072,850.00	1,313.89	1,074,991.64	827.75
131033	313385BF2	40	FHLB D N	9/26/2008	1/30/2009		3.100%	3.134%	1,275,000	1,261,166.25	10,649.79	1,274,989.73	3,173.69
127145	313385BT2	40	FHLB D N	3/6/2008	2/11/2009		2.300%	2.351%	275,000	268,991.25	5,288.40	274,996.87	717.22
131670	313385FD3	40	FHLB D N	11/5/2008	5/4/2009		1.900%	1.918%	545,000	539,822.50	1,639.54	544,776.55	3,314.51
		40 Total							3,170,000	3,142,830.00	18,891.62	3,169,754.79	8,033.17
132731	GOVTMMKT7	108	GOVERNMENT MONEY MARKET	12/8/2008	1/1/2009		0.595%	0.595%	100,000,000	100,000,000.00	39,672.71	100,000,000.00	0.00
132732	GOVTMMKT7	108	GOVERNMENT MONEY MARKET	12/15/2008	1/1/2009		0.595%	0.595%	25,000,000	25,000,000.00	7,025.38	25,000,000.00	0.00
132733	GOVTMMKT7	108	GOVERNMENT MONEY MARKET	12/19/2008	1/1/2009		0.595%	0.595%	120,000,000	120,000,000.00	25,787.26	120,000,000.00	0.00
132734	GOVTMMKT7	108	GOVERNMENT MONEY MARKET	12/5/2008	1/1/2009		0.595%	0.595%	75,000,000	75,000,000.00	33,473.85	75,000,000.00	0.00
131025	313385AB2	108	FHLB D N	9/26/2008	1/2/2009		3.310%	3.340%	35,000,000	34,684,630.56	312,151.38	34,999,990.28	3,208.34
131055	313385AB2	108	FHLB D N	9/29/2008	1/2/2009		3.300%	3.329%	20,000,000	19,825,833.33	172,333.34	19,999,994.44	1,827.77
131107	313385AE6	108	FHLB D N	9/30/2008	1/5/2009		3.000%	3.024%	10,443,000	10,358,585.75	80,933.25	10,442,988.40	3,469.40
131111	313385AE6	108	FHLB D N	9/30/2008	1/5/2009		3.000%	3.024%	1,793,000	1,778,506.58	13,895.75	1,792,998.01	595.68
132127	313385AE6	108	FHLB D N	12/1/2008	1/5/2009		0.400%	0.400%	10,283,000	10,279,001.06	3,541.92	10,282,988.57	445.59
131915	313589AE3	108	FNMA D N	11/20/2008	1/5/2009		0.550%	0.550%	1,794,000	1,792,739.22	1,151.15	1,793,998.01	107.64
132113	313385AG1	108	FHLB D N	11/28/2008	1/7/2009		0.350%	0.350%	7,384,000	7,381,128.44	2,440.83	7,383,987.69	418.42
132573	313385AG1	108	FHLB D N	12/22/2008	1/7/2009		0.100%	0.100%	145,000	144,993.56	4.03	144,999.76	2.17
131389	313589AG8	108	FNMA D N	10/15/2008	1/7/2009		1.800%	1.808%	2,290,000	2,280,382.00	8,931.00	2,289,996.18	683.18
127608	313313AH1	108	FFCB D N	3/31/2008	1/8/2009		2.030%	2.063%	15,510,000	15,262,490.56	241,387.30	15,509,969.84	6,091.98
131167	313385AH9	108	FHLB D N	10/1/2008	1/8/2009		2.800%	2.822%	21,950,000	21,780,985.00	157,064.44	21,949,957.32	11,907.88
131168	313385AJ5	108	FHLB D N	10/1/2008	1/9/2009		3.000%	3.025%	15,000,000	14,875,000.00	115,000.00	14,999,966.67	9,966.67
131477	313385AJ5	108	FHLB D N	10/23/2008	1/9/2009		2.100%	2.110%	5,000,000	4,977,250.00	20,416.67	4,999,988.89	2,322.22
114799	3133XEBN8	108	FHLB C I	1/12/2006	1/12/2009	1/12/2009	5.000%	5.000%	5,000,000	5,000,000.00	117,361.11	5,006,250.00	6,250.00
131970	313397AM3	108	FHLMC D N	11/21/2008	1/12/2009		0.600%	0.601%	10,000,000	9,991,333.33	6,833.34	9,999,969.44	1,802.77
132499	313589AP8	108	FNMA D N	12/18/2008	1/14/2009		0.050%	0.050%	8,000,000	7,999,700.00	155.56	7,999,971.11	115.55
131056	313385AQ9	108	FHLB D N	9/29/2008	1/15/2009		3.300%	3.333%	40,000,000	39,604,000.00	344,666.67	39,999,844.44	51,177.77
132086	313385AQ9	108	FHLB D N	11/28/2008	1/15/2009		0.400%	0.400%	10,000,000	9,994,666.67	3,777.78	9,999,961.11	1,516.66
132118	313385AQ9	108	FHLB D N	11/28/2008	1/15/2009		0.380%	0.380%	10,000,000	9,994,933.33	3,588.89	9,999,961.11	1,438.89
131921	313385AR7	108	FHLB D N	11/20/2008	1/16/2009		0.780%	0.781%	50,000,000	49,938,250.00	45,500.00	49,999,791.67	16,041.67
131106	313385AW6	108	FHLB D N	9/30/2008	1/21/2009		3.000%	3.029%	5,000,000	4,952,916.67	38,750.00	4,999,972.22	8,305.55
114961	31359ME74	108	FNMA BULLET	1/23/2006	1/23/2009		5.000%	5.011%	10,000,000	9,999,478.21	219,444.44	10,025,000.00	25,521.79
131115	313385BE5	108	FHLB D N	9/30/2008	1/29/2009		3.000%	3.031%	10,000,000	9,899,166.67	77,500.00	9,999,922.22	23,255.55
131360	313385BF2	108	FHLB D N	10/14/2008	1/30/2009		1.803%	1.813%	11,215,000	11,154,338.10	44,373.06	11,214,909.66	16,198.50
131554	313385BF2	108	FHLB D N	10/31/2008	1/30/2009		1.200%	1.204%	491,000	489,510.63	1,014.74	490,996.04	470.67
132084	313385BF2	108	FHLB D N	11/28/2008	1/30/2009		0.450%	0.450%	50,000,000	49,960,625.00	21,250.00	49,999,597.22	17,722.22
132500	313385BF2	108	FHLB D N	12/18/2008	1/30/2009		0.080%	0.080%	510,000	509,951.26	15.87	509,995.89	28.76
130678	313385BJ4	108	FHLB D N	9/11/2008	2/2/2009		2.360%	2.382%	1,270,000	1,258,011.20	9,324.62	1,269,988.71	2,652.89
131321	313589BJ1	108	FNMA D N	10/7/2008	2/2/2009		2.100%	2.115%	1,394,000	1,384,404.63	6,993.24	1,393,987.61	2,589.74
131170	313385BK1	108	FHLB D N	10/1/2008	2/3/2009		3.100%	3.134%	15,000,000	14,838,541.67	118,833.33	14,999,862.50	42,487.50
132038	313385BK1	108	FHLB D N	11/26/2008	2/3/2009		0.630%	0.631%	1,410,000	1,408,297.43	888.30	1,409,987.08	801.35
132109	313385BR6	108	FHLB D N	11/28/2008	2/9/2009		0.500%	0.501%	6,295,000	6,288,617.57	2,972.64	6,294,931.80	3,341.59
132123	313385BR6	108	FHLB D N	11/28/2008	2/9/2009		0.500%	0.501%	20,000,000	19,979,722.22	9,444.45	19,999,783.33	10,616.66
131923	313385BS4	108	FHLB D N	11/20/2008	2/10/2009		0.850%	0.852%	5,000,000	4,990,319.44	4,958.34	4,999,944.44	4,666.66
131971	313385BT2	108	FHLB D N	11/21/2008	2/11/2009		0.800%	0.801%	40,000,000	39,927,111.11	36,444.45	39,999,544.44	35,988.88
132027	912795K34	108	TREASURY BILLS	8/14/2008	2/12/2009		1.960%	1.980%	14,000,000	13,861,275.56	106,711.11	14,000,000.00	32,013.33
131169	313385BV7	108	FHLB D N	10/1/2008	2/13/2009		3.100%	3.136%	30,000,000	29,651,250.00	237,666.67	29,999,641.67	110,725.00
127517	TD0001	108	TIME DEPOSIT - MDTA L.O.C.	3/23/2008	2/14/2009		1.000%	1.000%	25,000	25,000.00	6.16	25,000.00	0.00
126830	TD0001	108	TIME DEPOSIT - MIAMI D.C. L.O.C.	2/17/2008	2/15/2009		2.640%	2.640%	2,000,000	2,000,000.00	6,509.59	2,000,000.00	0.00
131555	313385CF1	108	FHLB D N	10/31/2008	2/23/2009		1.950%	1.962%	100,000	99,377.08	335.84	99,998.53	285.61
132120	313385CH7	108	FHLB D N	11/28/2008	2/25/2009		0.650%	0.651%	5,000,000	4,991,965.28	3,069.44	4,999,923.61	4,888.89
130982	313385CN4	108	FHLB D N	9/24/2008	3/2/2009		3.050%	3.092%	30,000,000	29,595,875.00	251,625.00	29,999,000.00	151,500.00
131171	313385CN4	108	FHLB D N	10/1/2008	3/2/2009		3.200%	3.244%	5,000,000	4,932,444.44	40,888.89	4,999,833.33	26,500.00
132116	313385CQ7	108	FHLB D N	11/28/2008	3/4/2009		0.700%	0.701%	1,079,000	1,076,985.87	713.34	1,078,962.83	1,263.62
130985	313385CZ7	108	FHLB D N	9/25/2008	3/13/2009		3.100%	3.146%	40,000,000	39,417,888.89	337,555.55	39,998,422.22	242,977.78

MIAMI-DADE COUNTY
REPORT WRITER
AS OF DATE: December 31, 2008
SORTING ORDER: FUND ICC#

INVSMT NUMBER	CUSIP NUMBER	FUND NUMBER	DESCRIPTION	PURCHASE SET DATE	MATURITY DATE	CALL DATE	INTEREST RATE	YTM TRADING	SCHEDULED PAR VALUE	CURRENT BOOK VALUE	PERIOD-END INTEREST ACCRL	MARKET VALUE	UNREALIZED GAIN/LOSS
127327	TD0091	108	TIME DEPOSIT - COMMERCE BANK N A	3/14/2008	3/13/2009		3.040%	3.040%	5,000,000	5,000,000.00	8,328.77	5,000,000.00	0.00
131735	313385DD5	108	FHLB D N	11/10/2008	3/17/2009		1.450%	1.457%	380,000	378,056.19	795.89	379,984.17	1,132.09
132090	313385DE3	108	FHLB D N	11/28/2008	3/18/2009		0.700%	0.702%	20,000,000	19,957,222.22	13,222.22	19,999,155.56	28,711.12
132121	313385DE3	108	FHLB D N	11/28/2008	3/18/2009		0.700%	0.702%	15,000,000	14,967,916.67	9,916.67	14,999,366.67	21,533.33
131476	313385DG8	108	FHLB D N	10/23/2008	3/20/2009		2.800%	2.833%	4,500,000	4,448,200.00	24,500.00	4,499,805.00	27,105.00
131520	313385DK9	108	FHLB D N	10/27/2008	3/23/2009		2.800%	2.832%	923,000	912,447.04	4,738.06	922,958.47	5,773.37
131552	313385DK9	108	FHLB D N	10/31/2008	3/23/2009		2.250%	2.270%	982,000	973,223.38	3,805.25	981,955.81	4,927.18
131909	313385DK9	108	FHLB D N	11/19/2008	3/23/2009		1.150%	1.155%	1,207,000	1,202,218.94	1,657.95	1,206,945.69	3,068.80
130959	3133XSCB2	108	FHLB - BULLET	9/24/2008	3/24/2009		2.900%	2.900%	10,000,000	10,000,000.00	78,138.89	10,059,375.00	59,375.00
131831	313385DM5	108	FHLB D N	11/14/2008	3/25/2009		1.300%	1.306%	1,121,000	1,115,697.05	1,943.07	1,120,948.31	3,308.19
131968	313397DM0	108	FHLMC D N	11/21/2008	3/25/2009		1.100%	1.104%	22,000,000	21,916,644.45	27,561.11	21,998,985.56	54,780.00
131969	313397DM0	108	FHLMC D N	11/21/2008	3/25/2009		1.100%	1.104%	25,000,000	24,905,277.78	31,319.44	24,998,847.22	62,250.00
130986	912795K91	108	TREASURY BILLS	9/25/2008	3/26/2009		1.700%	1.715%	10,000,000	9,914,055.60	46,277.75	10,000,000.00	39,666.65
132115	313385DS2	108	FHLB D N	11/28/2008	3/30/2009		0.650%	0.651%	3,475,000	3,467,345.35	2,133.26	3,474,830.11	5,351.50
127585	313397DS7	108	FHLMC D N	3/31/2008	3/30/2009		2.050%	2.093%	5,000,000	4,896,361.11	78,583.33	4,999,755.56	24,811.12
128127	313385DT0	108	FHLB D N	4/30/2008	3/31/2009		2.250%	2.298%	1,000,000	979,062.50	15,375.00	999,950.56	5,513.06
131734	313385DT0	108	FHLB D N	11/10/2008	3/31/2009		1.500%	1.509%	133,000	132,218.63	288.16	132,993.42	486.63
131413	313385DU7	108	FHLB D N	10/16/2008	4/1/2009		3.050%	3.094%	1,517,000	1,495,536.56	9,896.32	1,516,696.60	11,263.72
131828	313589DU4	108	FNMA D N	11/13/2008	4/1/2009		1.270%	1.276%	2,719,000	2,705,667.08	4,700.09	2,718,456.20	8,089.03
131927	313397DV0	108	FHLMC D N	11/20/2008	4/2/2009		1.200%	1.205%	30,000,000	29,867,000.00	42,000.00	29,993,933.33	84,933.33
131429	313385EG7	108	FHLB D N	10/17/2008	4/13/2009		3.100%	3.148%	1,854,000	1,825,582.30	12,133.40	1,853,579.76	15,864.06
122139	31331XVG4	108	FFCB BULLET	5/25/2007	4/13/2009		4.875%	5.080%	25,000,000	24,975,700.29	264,062.50	25,320,312.50	344,612.21
130462	313385EH5	108	FHLB D N	8/29/2008	4/14/2009		2.850%	2.902%	7,463,000	7,328,292.85	73,852.60	7,461,291.80	59,146.35
132092	313385EH5	108	FHLB D N	11/28/2008	4/14/2009		0.950%	0.953%	2,280,000	2,271,757.17	2,045.67	2,279,478.13	5,675.29
132088	313385EK8	108	FHLB D N	11/28/2008	4/16/2009		0.930%	0.933%	3,300,000	3,288,150.25	2,898.50	3,299,230.00	8,181.25
131762	313385EP7	108	FHLB D N	11/13/2008	4/20/2009		1.300%	1.307%	9,400,000	9,346,367.78	16,632.78	9,397,723.11	34,722.55
131518	313385ET9	108	FHLB D N	10/24/2008	4/24/2009		3.000%	3.046%	1,892,000	1,863,304.67	10,879.00	1,891,524.90	17,341.23
131711	313385ET9	108	FHLB D N	10/24/2008	4/24/2009		3.000%	3.360%	4,500,000	4,431,750.00	25,875.00	4,498,870.00	41,245.00
132089	313385ET9	108	FHLB D N	11/28/2008	4/24/2009		0.900%	0.903%	3,586,000	3,572,821.45	3,048.10	3,585,099.52	9,229.97
132093	313385EY8	108	FHLB D N	11/28/2008	4/29/2009		0.950%	0.954%	1,420,000	1,414,304.22	1,274.06	1,419,627.64	4,049.36
132110	313385EZ5	108	FHLB D N	11/28/2008	4/30/2009		1.000%	1.004%	1,300,000	1,294,475.00	1,227.78	1,299,656.22	3,953.44
132210	313385EZ5	108	FHLB D N	12/2/2008	4/30/2009		1.001%	1.005%	1,501,000	1,494,781.31	1,252.09	1,500,603.07	4,569.67
131793	313385FD3	108	FHLB D N	11/13/2008	5/4/2009		1.450%	1.460%	4,000,000	3,972,288.89	7,894.44	3,998,360.00	18,176.67
132087	313385FE1	108	FHLB D N	11/28/2008	5/5/2009		1.100%	1.105%	7,952,000	7,913,609.51	8,261.24	7,948,713.17	26,842.42
131796	313385FM3	108	FHLB D N	11/14/2008	5/12/2009		1.600%	1.613%	250,000	248,011.11	533.33	249,890.83	1,346.39
131737	313385FN1	108	FHLB D N	11/10/2008	5/13/2009		1.450%	1.461%	235,000	233,258.39	492.19	234,896.60	1,146.02
132217	313385FN1	108	FHLB D N	12/4/2008	5/13/2009		0.870%	0.873%	2,000,000	1,992,266.67	1,353.33	1,999,120.00	5,500.00
131830	313589FN8	108	FNMA D N	11/14/2008	5/13/2009		1.550%	1.562%	6,765,000	6,712,571.25	13,981.00	6,762,023.40	35,471.15
131733	313385FP6	108	FHLB D N	11/10/2008	5/14/2009		1.550%	1.562%	220,000	218,247.64	492.56	219,902.47	1,162.27
131798	313385FT8	108	FHLB D N	11/14/2008	5/18/2009		1.600%	1.613%	185,000	183,478.89	394.67	184,915.52	1,041.96
132039	313385FV3	108	FHLB D N	11/26/2008	5/20/2009		1.181%	1.188%	25,000,000	24,856,475.69	29,525.00	24,988,416.67	102,415.98
131759	313385GB6	108	FHLB D N	11/13/2008	5/26/2009		1.600%	1.614%	11,502,000	11,402,827.20	25,048.80	11,496,440.70	68,564.70
131761	313385GB6	108	FHLB D N	11/13/2008	5/26/2009		1.600%	1.614%	5,000,000	4,956,888.89	10,888.89	4,997,583.33	29,805.55
131799	313385GB6	108	FHLB D N	11/14/2008	5/26/2009		1.850%	1.869%	2,500,000	2,475,204.86	6,166.67	2,498,791.67	17,420.14
132073	313385GB6	108	FHLB D N	11/26/2008	5/26/2009		1.100%	1.106%	1,175,000	1,168,501.60	1,292.50	1,174,432.08	4,637.98
131623	313385GC4	108	FHLB D N	11/4/2008	5/27/2009		2.050%	2.074%	309,000	305,410.45	1,020.56	308,849.62	2,418.61
131800	313385GC4	108	FHLB D N	11/14/2008	5/27/2009		1.800%	1.818%	7,000,000	6,932,100.00	16,800.00	6,996,593.33	47,693.33
131972	313385GD2	108	FHLB D N	11/21/2008	5/28/2009		1.500%	1.512%	20,000,000	19,843,333.33	34,166.67	19,990,200.00	112,700.00
132085	313385GD2	108	FHLB D N	11/28/2008	5/28/2009		1.100%	1.106%	14,435,000	14,355,166.43	14,996.36	14,427,926.85	57,764.06
132361	313385GH3	108	FHLB D N	12/11/2008	6/1/2009		0.450%	0.451%	2,006,000	2,001,687.10	526.58	2,003,896.49	1,682.81
131925	313397GJ4	108	FHLMC D N	11/20/2008	6/2/2009		1.400%	1.411%	40,000,000	39,698,222.22	65,333.33	39,957,777.78	194,222.23
128971	912795Q79	108	TREASURY BILLS	6/13/2008	6/13/2009		2.465%	2.527%	20,000,000	19,512,477.78	276,627.78	19,993,750.00	204,644.44
132419	313589GL1	108	FNMA D N	12/15/2008	6/4/2009		0.500%	0.501%	2,177,000	2,171,829.63	514.01	2,174,671.82	2,328.18
128871	3133XRHF0	108	FHLB - BULLET	6/10/2008	6/10/2009		2.730%	2.730%	15,000,000	15,000,000.00	23,887.50	15,154,687.50	154,687.50

MIAMI-DADE COUNTY
REPORT WRITER
AS OF DATE: December 31, 2008
SORTING ORDER: FUND ICC#

INVSMT NUMBER	CUSIP NUMBER	FUND NUMBER	DESCRIPTION	PURCHASE SET DATE	MATURITY DATE	CALL DATE	INTEREST RATE	YTM TRADING	SCHEDULED PAR VALUE	CURRENT BOOK VALUE	PERIOD-END INTEREST ACRL	MARKET VALUE	UNREALIZED GAIN/LOSS
131763	313397HE4	108	FHLMC D N	11/13/2008	6/22/2009		1.650%	1.667%	1,500,000	1,484,806.25	3,368.75	1,498,208.33	10,033.33
131736	313385HJ8	108	FHLB D N	11/10/2008	6/26/2009		1.650%	1.667%	100,000	98,955.00	238.33	99,877.78	684.45
131732	313385HN9	108	FHLB D N	11/10/2008	6/30/2009		1.500%	1.515%	7,350,000	7,278,950.00	15,925.00	7,337,137.50	42,262.50
131928	313397HN4	108	FHLMC D N	11/20/2008	6/30/2009		1.450%	1.463%	30,000,000	29,731,750.00	50,750.00	29,947,500.00	165,000.00
131932	313397HN4	108	FHLMC D N	11/20/2008	6/30/2009		1.450%	1.463%	40,000,000	39,642,333.33	67,666.67	39,930,000.00	220,000.00
132615	3136F9Z48	108	FNMA STEP UP	12/30/2008	6/30/2009	3/30/2009	2.125%	2.125%	10,000,000	10,000,000.00	590.28	10,006,250.00	6,250.00
131246	313385HP4	108	FHLB D N	10/7/2008	7/1/2009		2.500%	2.547%	5,000,000	4,907,291.67	29,861.11	4,991,201.39	54,048.61
131624	313385HP4	108	FHLB D N	11/4/2008	7/1/2009		2.300%	2.336%	100,000	98,473.06	370.55	99,824.03	980.42
131825	313589HP1	108	FNMA D N	11/14/2008	7/1/2009		1.693%	1.711%	648,000	641,021.45	1,462.75	646,859.70	4,375.50
129767	912795Q87	108	TREASURY BILLS	7/22/2008	7/2/2009		2.215%	2.263%	30,000,000	29,363,187.50	300,870.83	29,962,500.00	298,441.67
132094	313385HQ2	108	FHLB D N	11/28/2008	7/2/2009		1.200%	1.209%	5,000,000	4,964,000.00	5,666.67	4,991,152.78	21,486.11
131824	313589HQ9	108	FNMA D N	11/14/2008	7/2/2009		1.695%	1.714%	5,000,000	4,945,854.17	11,300.00	4,991,152.78	33,998.61
132343	313589HQ9	108	FNMA D N	12/12/2008	7/2/2009		0.450%	0.451%	3,800,000	3,790,405.00	950.00	3,793,276.11	1,921.11
132211	313385HV1	108	FHLB D N	12/3/2008	7/7/2009		1.250%	1.259%	3,617,000	3,589,872.50	3,642.12	3,610,424.09	16,909.47
129528	TD0122	108	TIME DEPOSIT-EASTERN NATIONAL BK	7/9/2008	7/9/2009		3.250%	3.250%	5,000,000	5,000,000.00	38,287.67	5,000,000.00	0.00
129933	TD0001	108	TIME DEPOSIT MDTA L.O.C.	7/24/2008	7/24/2009		2.610%	2.610%	25,000	25,000.00	123.35	25,000.00	0.00
129957	912795Q95	108	TREASURY BILLS	7/31/2008	7/30/2009		2.260%	2.313%	20,000,000	19,542,977.80	193,355.55	19,968,750.00	232,416.65
131750	313397JY8	108	FHLMC D N	11/10/2008	8/3/2009		1.850%	1.876%	2,302,000	2,270,532.94	6,151.46	2,297,210.56	20,526.16
132470	313397KN0	108	FHLMC D N	12/17/2008	8/17/2009		0.750%	0.754%	77,000	76,610.19	24.06	76,829.32	195.07
131978	313313KS6	108	FFCB D N	11/21/2008	8/21/2009		1.550%	1.568%	35,000,000	34,588,604.17	61,784.72	34,909,777.78	259,388.89
131980	313313KS6	108	FFCB D N	11/21/2008	8/21/2009		1.550%	1.568%	45,000,000	44,471,062.50	79,437.50	44,884,000.00	333,500.00
132016	313313KS6	108	FFCB D N	11/25/2008	8/21/2009		1.550%	1.568%	100,000	98,841.81	159.30	99,742.22	741.11
130958	912795S28	108	TREASURY BILLS	9/24/2008	8/27/2009		1.900%	1.934%	50,000,000	49,110,694.44	261,250.00	49,937,500.00	565,555.56
131222	912795S28	108	TREASURY BILLS	10/3/2008	8/27/2009		1.400%	1.418%	50,000,000	49,362,222.22	175,000.00	49,937,500.00	400,277.78
132014	313385KZ8	108	FHLB D N	11/25/2008	8/28/2009		1.600%	1.620%	10,000,000	9,877,333.33	16,444.44	9,976,763.89	82,986.12
132654	313397LD1	108	FHLMC D N	12/31/2008	9/1/2009		0.550%	0.552%	20,000,000	19,925,444.44	305.56	19,923,050.00	(2,700.00)
132506	313385LU8	108	FHLB D N	12/19/2008	9/16/2009		0.500%	0.502%	10,000,000	9,962,361.11	1,805.56	9,959,150.00	(5,016.67)
132627	313397MJ7	108	FHLMC D N	12/31/2008	9/30/2009		0.650%	0.653%	20,000,000	19,901,416.67	361.11	19,918,750.00	16,972.22
132539	313385MK9	108	FHLB D N	12/23/2008	10/1/2009		0.630%	0.633%	440,000	437,828.60	69.30	438,075.00	177.10
131209	3133XSE53	108	FHLB C I	10/2/2008	10/2/2009	1/2/2009	3.800%	3.800%	25,000,000	25,000,000.00	234,861.11	25,000,000.00	0.00
127737	3133XQN65	108	FHLB - BULLET	4/7/2008	10/7/2009		2.600%	2.603%	5,330,000	5,329,822.98	32,335.33	5,411,615.63	81,792.65
132189	313385NM4	108	FHLB D N	12/3/2008	10/27/2009		1.529%	1.551%	750,000	739,551.83	923.77	746,250.00	5,774.40
132008	313385NT9	108	FHLB D N	11/25/2008	11/2/2009		1.640%	1.666%	38,000,000	37,407,960.00	64,051.11	37,786,250.00	314,238.89
131975	313385PH3	108	FHLB D N	11/21/2008	11/16/2009		1.650%	1.678%	9,798,000	9,636,333.00	18,412.08	9,742,886.25	88,141.17
132117	313385PM2	108	FHLB D N	11/28/2008	11/20/2009		1.670%	1.698%	5,000,000	4,917,195.83	7,886.11	4,970,312.50	45,230.56
132040	313385PR1	108	FHLB D N	11/26/2008	11/24/2009		1.700%	1.730%	45,000,000	44,228,625.00	76,500.00	44,732,812.50	427,687.50
132007	313385PS9	108	FHLB D N	11/25/2008	11/25/2009		1.700%	1.730%	1,350,000	1,326,731.25	2,358.75	1,341,984.38	12,894.38
132041	313385PS9	108	FHLB D N	11/26/2008	11/25/2009		1.700%	1.730%	40,000,000	39,312,444.44	68,000.00	39,762,500.00	382,055.56
132213	3133XSN11	108	FHLB C I	12/4/2008	12/1/2009	6/1/2009	2.000%	2.000%	13,970,000	13,972,328.33	23,283.33	14,048,581.25	78,581.25
132599	313385QF6	108	FHLB D N	12/29/2008	12/8/2009		0.800%	0.806%	1,386,000	1,375,404.80	92.40	1,376,904.38	1,407.18
132625	313385QU3	108	FHLB D N	12/30/2008	12/21/2009		0.770%	0.776%	7,150,900	7,096,449.87	305.90	7,101,737.56	4,981.79
132622	3128X8DH2	108	FHLMC C I	12/30/2008	12/30/2009	3/30/2009	1.000%	1.000%	10,000,000	10,000,000.00	277.78	9,987,500.00	(12,500.00)
130256	31331Y6H8	108	FFCB - BULLET	8/18/2008	2/18/2010		3.150%	3.150%	10,000,000	10,000,000.00	116,375.00	10,268,750.00	268,750.00
127202	3128X66R2	108	FHLMC C I	3/10/2008	3/10/2010	3/10/2009	3.000%	3.000%	10,000,000	10,000,000.00	92,500.00	10,037,500.00	37,500.00
127254	3136F9CN1	108	FNMA C I	3/12/2008	3/12/2010	3/12/2010	3.250%	3.250%	10,000,000	10,000,000.00	98,402.78	10,046,875.00	46,875.00
128098	3136F9MU4	108	FNMA C I	4/30/2008	4/30/2010	4/30/2009	3.000%	3.000%	11,000,000	11,000,000.00	55,916.67	11,079,062.50	79,062.50
128396	3136F9PP2	108	FNMA C I	5/14/2008	5/14/2010	5/14/2010	3.125%	3.125%	15,000,000	15,000,000.00	61,197.92	15,126,562.50	126,562.50
132291	3136F9Y23	108	FNMA C I	12/10/2008	6/10/2010	6/10/2009	2.500%	2.500%	10,000,000	10,000,000.00	14,583.33	10,043,750.00	43,750.00
132318	31331GG52	108	FFCB - BULLET	12/11/2008	6/11/2010		2.000%	2.000%	30,000,000	30,000,000.00	33,333.33	30,440,625.00	440,625.00
132319	31331GG52	108	FFCB - BULLET	12/11/2008	6/11/2010		2.000%	2.000%	20,000,000	20,000,000.00	22,222.22	20,293,750.00	293,750.00
132420	3133XSPC6	108	FHLB C I	12/16/2008	6/16/2010	6/16/2009	2.000%	2.000%	15,000,000	15,000,000.00	12,500.00	15,070,312.50	70,312.50
129002	31398ASH6	108	FNMA C I	6/16/2008	6/16/2010	6/16/2009	3.550%	3.550%	10,000,000	10,000,000.00	14,791.67	10,131,250.00	131,250.00
129402	3136F9WV1	108	FNMA C I	7/2/2008	7/2/2010	7/2/2009	4.000%	4.000%	10,000,000	10,000,000.00	198,888.89	10,162,500.00	162,500.00
129495	31331Y2P4	108	FFCB - BULLET	7/7/2008	7/7/2010		3.300%	3.300%	6,310,000	6,310,000.00	100,644.50	6,536,765.63	226,765.63

MIAMI-DADE COUNTY
REPORT WRITER
AS OF DATE: December 31, 2008
SORTING ORDER: FUND ICC#

INVSMT NUMBER	CUSIP NUMBER	FUND NUMBER	DESCRIPTION	PURCHASE SET DATE	MATURITY DATE	CALL DATE	INTEREST RATE	YTM TRADING	SCHEDULED PAR VALUE	CURRENT BOOK VALUE	PERIOD-END INTEREST ACCRL	MARKET VALUE	UNREALIZED GAIN/LOSS
130740	31331GBC2	108	FFCB C I	9/15/2008	9/15/2010	9/15/2009	3.300%	3.300%	5,000,000	5,000,000.00	48,583.33	5,085,937.50	85,937.50
130960	3133XSAH1	108	FHLB C I	9/24/2008	9/24/2010	3/24/2009	3.250%	3.250%	10,000,000	10,000,000.00	87,569.44	10,059,375.00	59,375.00
131090	912828JL5	108	TREASURY NOTES	9/30/2008	9/30/2010		2.000%	2.085%	10,000,000	9,983,593.75	51,381.22	10,253,125.00	269,531.25
131173	3133XS7M4	108	FHLB C I	10/1/2008	10/1/2010	4/1/2009	3.300%	3.300%	5,000,000	5,000,000.00	41,250.00	5,028,125.00	28,125.00
131324	3136F9K77	108	FNMA C I	10/10/2008	10/8/2010	1/8/2009	4.000%	4.012%	10,000,000	9,999,922.22	92,222.22	10,003,125.00	5,425.00
129472	3136F9XV0	108	FNMA C I	7/7/2008	1/7/2011	1/7/2009	4.200%	4.200%	20,000,000	20,000,000.00	406,000.00	20,012,500.00	12,500.00
126446	3128X6J72	108	FHLMC C I	1/29/2008	1/28/2011	1/28/2011	3.600%	3.600%	15,000,000	15,000,000.00	229,500.00	15,028,125.00	28,125.00
126715	3133XPL36	108	FHLB C I	2/11/2008	2/11/2011	2/11/2009	3.250%	3.261%	6,000,000	5,998,500.55	75,833.33	6,016,875.00	18,374.45
127753	31398ANH1	108	FNMA C I	4/8/2008	2/25/2011	2/25/2009	3.250%	3.250%	15,760,000	15,760,000.00	179,270.00	15,814,175.00	54,175.00
131994	31398ANH1	108	FNMA C I	11/24/2008	2/25/2011	2/25/2009	3.250%	3.263%	5,000,000	5,038,611.11	56,875.00	5,017,187.50	18,750.00
127752	31398APP1	108	FNMA C I	4/8/2008	4/1/2011	4/1/2009	3.150%	3.194%	10,000,000	9,989,533.55	78,750.00	10,059,375.00	69,841.45
127819	31331YD49	108	FFCB C I	4/11/2008	4/11/2011	4/4/2011	3.450%	3.450%	10,000,000	10,000,000.00	76,666.67	10,003,125.00	3,125.00
132262	31398ARU8	108	FNMA C I	12/8/2008	6/10/2011	6/10/2009	3.750%	3.458%	15,000,000	15,103,758.32	32,812.50	15,178,125.00	74,366.68
132526	3136F9Y56	108	FNMA C I	12/22/2008	6/22/2011	6/22/2009	3.000%	3.000%	10,000,000	10,000,000.00	7,500.00	10,031,250.00	31,250.00
132367	31331GGQ6	108	FFCB C I	12/15/2008	12/15/2011	12/15/2009	3.000%	3.000%	15,000,000	15,000,000.00	20,000.00	15,159,375.00	159,375.00
132576	3133XSQH4	108	FHLB C I	12/29/2008	12/29/2011	12/29/2009	3.000%	3.000%	5,000,000	5,000,000.00	833.33	5,054,687.50	54,687.50
120412	3128X5ZC5	108	FHLMC C I	2/2/2007	2/2/2012	2/2/2009	5.400%	5.400%	30,000,000	30,000,000.00	670,500.00	30,103,125.00	103,125.00
		108 Total							2,282,408,900	2,268,847,375.67	9,528,356.46	2,284,392,671.35	10,192,023.74
132735	GOVTMMKT7	109	GOVERNMENT MONEY MARKET	12/19/2008	1/1/2009		0.595%	0.595%	30,000,000	30,000,000.00	6,446.81	30,000,000.00	0.00
129593	313385AB2	109	FHLB D N	7/11/2008	1/2/2009		2.520%	2.551%	12,000,000	11,853,000.00	146,160.00	11,999,996.67	836.67
132369	313385AB2	109	FHLB D N	12/15/2008	1/2/2009		0.100%	0.100%	1,370,000	1,369,931.50	64.69	1,369,999.62	3.43
132256	36161CN24	109	CP D GE CAPITAL TLGP	12/5/2008	1/2/2009		0.500%	0.500%	10,000,000	9,996,111.11	3,750.00	9,999,844.44	(16.67)
132572	313385AG1	109	FHLB D N	12/22/2008	1/7/2009		0.100%	0.100%	855,000	854,962.00	23.75	854,998.58	12.83
131390	313589AG8	109	FNMA D N	10/15/2008	1/7/2009		1.800%	1.808%	9,210,000	9,171,318.00	35,919.00	9,209,984.65	2,747.65
131328	313385AJ5	109	FHLB D N	10/10/2008	1/9/2009		1.750%	1.758%	9,000,000	8,960,187.50	36,312.50	8,999,980.00	3,480.00
132015	74081JN92	109	CP D HARVARD UNIVERSITY	11/25/2008	1/9/2009		1.500%	1.503%	5,001,000	4,991,623.13	7,709.87	5,000,377.65	1,044.65
129107	313313AQ1	109	FFCB D N	6/20/2008	1/15/2009		2.600%	2.640%	4,250,000	4,185,848.61	59,854.17	4,249,983.47	4,280.69
130491	313313AV0	109	FFCB D N	8/29/2008	1/20/2009		2.700%	2.729%	993,000	982,275.60	9,309.38	992,994.76	1,409.78
131345	313589AV5	109	FNMA D N	10/14/2008	1/20/2009		1.900%	1.910%	500,000	497,413.89	2,084.72	499,997.36	498.75
131178	313385AW6	109	FHLB D N	10/1/2008	1/21/2009		2.870%	2.896%	4,000,000	3,964,284.44	29,337.78	3,999,977.78	6,355.56
131179	313385AX4	109	FHLB D N	10/1/2008	1/22/2009		2.780%	2.804%	1,695,000	1,680,209.24	12,042.03	1,694,990.11	2,738.84
131361	313385BF2	109	FHLB D N	10/14/2008	1/30/2009		1.803%	1.813%	2,785,000	2,769,935.90	11,019.11	2,784,977.57	4,022.56
132501	313385BF2	109	FHLB D N	12/18/2008	1/30/2009		0.080%	0.080%	490,000	489,953.18	15.24	489,996.05	27.63
130989	313385BJ4	109	FHLB D N	9/25/2008	2/2/2009		3.220%	3.258%	15,000,000	14,825,583.33	131,483.34	14,999,866.67	42,800.00
131280	313385BJ4	109	FHLB D N	10/8/2008	2/2/2009		2.150%	2.165%	8,000,000	7,944,100.00	40,611.11	7,999,928.89	15,217.78
131412	313385BJ4	109	FHLB D N	10/17/2008	2/2/2009		2.500%	2.519%	1,500,000	1,488,750.00	7,916.67	1,499,986.67	3,320.00
131320	313589BJ1	109	FNMA D N	10/7/2008	2/2/2009		2.100%	2.115%	4,606,000	4,574,295.37	23,106.76	4,605,959.06	8,556.93
131480	313589BJ1	109	FNMA D N	10/23/2008	2/2/2009		2.350%	2.366%	5,000,000	4,966,708.33	22,847.22	4,999,955.56	10,400.01
132628	313589BJ1	109	FNMA D N	12/31/2008	2/2/2009		0.050%	0.050%	2,395,000	2,394,890.23	3.33	2,394,978.71	85.15
131479	313589BK8	109	FNMA D N	10/23/2008	2/3/2009		2.400%	2.417%	2,000,000	1,986,266.67	9,333.33	1,999,981.67	4,381.67
122070	3133XJQP6	109	FHLB - BULLET	5/22/2007	2/4/2009		5.000%	5.108%	20,000,000	19,989,266.35	408,333.33	20,081,250.00	91,983.65
130208	912795K34	109	TREASURY BILLS	8/14/2008	2/12/2009		1.960%	1.980%	10,000,000	9,900,911.11	76,222.22	10,000,000.00	22,866.67
132509	313397BV2	109	FHLMC D N	12/19/2008	2/13/2009		0.180%	0.180%	4,000,000	3,998,880.00	260.00	3,999,952.22	812.22
131553	313385CH7	109	FHLB D N	10/31/2008	2/25/2009		1.950%	1.962%	870,000	864,486.38	2,921.75	869,986.71	2,578.58
128032	313589CK7	109	FNMA D N	4/25/2008	2/27/2009		2.250%	2.294%	4,985,000	4,889,038.75	78,202.19	4,984,921.07	17,680.13
128123	313589CK7	109	FNMA D N	4/30/2008	2/27/2009		2.200%	2.242%	3,620,000	3,552,969.67	54,420.66	3,619,942.68	12,552.35
128031	313397CN9	109	FHLMC D N	4/25/2008	3/2/2009		2.300%	2.347%	680,000	666,488.78	10,904.55	679,977.33	2,584.00
130661	313385CX2	109	FHLB D N	9/10/2008	3/11/2009		2.410%	2.440%	7,000,000	6,914,712.78	52,953.05	6,999,731.67	32,065.84
131329	313385DC7	109	FHLB D N	10/10/2008	3/16/2009		2.250%	2.272%	1,500,000	1,485,281.25	7,781.25	1,499,938.33	6,875.83
131343	313385DC7	109	FHLB D N	10/14/2008	3/16/2009		2.500%	2.527%	5,000,000	4,946,875.00	27,430.56	4,999,794.44	25,488.88
131588	313385DC7	109	FHLB D N	11/3/2008	3/16/2009		2.250%	2.269%	710,000	704,098.13	2,618.12	709,970.81	3,254.56
131100	313385DK9	109	FHLB D N	9/30/2008	3/23/2009		3.200%	3.250%	10,000,000	9,845,333.33	82,666.67	9,999,550.00	71,550.00
131521	313385DK9	109	FHLB D N	10/27/2008	3/23/2009		2.800%	2.832%	4,077,000	4,030,386.29	20,928.60	4,076,816.54	25,501.65
131910	313385DK9	109	FHLB D N	11/19/2008	3/23/2009		1.150%	1.155%	2,293,000	2,283,917.17	3,149.69	2,292,896.82	5,829.96

MIAMI-DADE COUNTY
REPORT WRITER
AS OF DATE: December 31, 2008
SORTING ORDER: FUND ICC#

INVSMT NUMBER	CUSIP NUMBER	FUND NUMBER	DESCRIPTION	PURCHASE SET DATE	MATURITY DATE	CALL DATE	INTEREST RATE	YTM TRADING	SCHEDULED PAR VALUE	CURRENT BOOK VALUE	PERIOD-END INTEREST ACCRL	MARKET VALUE	UNREALIZED GAIN/LOSS
131832	313385DM5	109	FHLB D N	11/14/2008	3/25/2009		1.300%	1.306%	879,000	874,841.84	1,523.60	878,959.47	2,594.03
131998	313385DM5	109	FHLB D N	11/24/2008	3/25/2009		1.621%	1.630%	525,000	522,139.61	898.30	524,975.79	1,937.88
130988	912795K91	109	TREASURY BILLS	9/25/2008	3/26/2009		1.700%	1.715%	40,000,000	39,656,222.40	185,111.02	40,000,000.00	158,666.58
131997	313385DT0	109	FHLB D N	11/24/2008	3/31/2009		1.100%	1.104%	750,000	747,089.58	870.83	749,962.92	2,002.51
129607	313385DU7	109	FHLB D N	7/14/2008	4/1/2009		2.640%	2.692%	12,000,000	11,770,320.00	150,480.00	11,997,600.00	76,800.00
131392	313385DU7	109	FHLB D N	10/16/2008	4/1/2009		2.700%	2.734%	6,165,000	6,087,783.38	35,602.87	6,163,767.00	40,380.75
131414	313385DU7	109	FHLB D N	10/16/2008	4/1/2009		3.050%	3.094%	2,483,000	2,447,869.00	16,198.13	2,482,503.40	18,436.27
131277	313589DU4	109	FNMA D N	10/7/2008	4/1/2009		2.350%	2.377%	7,000,000	6,919,577.78	39,297.22	6,998,600.00	39,725.00
131829	313589DU4	109	FNMA D N	11/13/2008	4/1/2009		1.270%	1.276%	2,281,000	2,269,814.86	3,942.96	2,280,543.80	6,785.98
132374	313589DU4	109	FNMA D N	12/15/2008	4/1/2009		0.300%	0.300%	500,000	499,554.17	70.83	499,900.00	275.00
132537	313385EA0	109	FHLB D N	12/23/2008	4/7/2009		0.354%	0.354%	6,000,000	5,993,805.00	531.00	5,998,720.00	4,384.00
128795	313385EG7	109	FHLB D N	6/5/2008	4/13/2009		2.480%	2.534%	3,808,000	3,726,153.39	55,089.06	3,807,136.85	25,894.40
131428	313385EG7	109	FHLB D N	10/17/2008	4/13/2009		3.100%	3.148%	6,146,000	6,051,795.48	40,222.15	6,144,606.91	52,589.28
122141	31331XVG4	109	FFCB BULLET	5/25/2007	4/13/2009		4.875%	5.080%	15,000,000	14,985,420.18	158,437.50	15,192,187.50	206,767.32
131551	313385EK8	109	FHLB D N	10/31/2008	4/16/2009		2.270%	2.294%	2,500,000	2,473,674.31	9,773.61	2,499,416.67	15,968.75
131556	313385EK8	109	FHLB D N	10/31/2008	4/16/2009		2.270%	2.294%	2,247,000	2,223,338.47	8,784.52	2,246,475.70	14,352.71
129594	313385EP7	109	FHLB D N	7/11/2008	4/20/2009		2.600%	2.654%	10,000,000	9,795,611.11	125,666.67	9,997,577.78	76,300.00
131278	313385EP7	109	FHLB D N	10/7/2008	4/20/2009		2.400%	2.432%	1,108,000	1,093,596.00	6,352.53	1,107,731.62	7,783.09
128015	3133XQV66	109	FHLB BULLET	4/25/2008	4/21/2009		2.520%	2.727%	10,000,000	9,989,972.30	49,000.00	10,065,625.00	75,652.70
131519	313385ET9	109	FHLB D N	10/24/2008	4/24/2009		3.000%	3.046%	2,608,000	2,568,445.33	14,996.00	2,607,345.10	23,903.77
132538	313385ET9	109	FHLB D N	12/23/2008	4/24/2009		0.400%	0.401%	1,500,000	1,497,966.67	150.00	1,499,623.33	1,506.66
132370	313397EW7	109	FHLMC D N	12/15/2008	4/27/2009		0.425%	0.426%	2,000,000	1,996,859.72	401.39	1,999,484.44	2,223.33
132209	313385EZ5	109	FHLB D N	12/2/2008	4/30/2009		1.001%	1.005%	3,499,000	3,484,503.55	2,918.75	3,498,074.71	10,652.41
132371	313385FA9	109	FHLB D N	12/15/2008	5/1/2009		0.400%	0.401%	650,000	649,010.56	122.78	649,740.00	606.66
132534	313385FD3	109	FHLB D N	12/23/2008	5/4/2009		0.400%	0.401%	3,000,000	2,995,600.00	300.00	2,998,770.00	2,870.00
132129	313385FH4	109	FHLB D N	12/1/2008	5/8/2009		1.150%	1.156%	1,750,000	1,741,167.36	1,732.99	1,749,259.17	6,358.82
132294	313385FT8	109	FHLB D N	12/10/2008	5/18/2009		0.550%	0.551%	250,000	249,392.71	84.03	249,885.83	409.09
132535	313385FT8	109	FHLB D N	12/23/2008	5/18/2009		0.406%	0.407%	1,500,000	1,497,530.17	152.25	1,499,315.00	1,632.58
132130	313385GE0	109	FHLB D N	12/1/2008	5/29/2009		1.250%	1.258%	5,000,000	4,968,923.61	5,381.94	4,997,533.33	23,227.78
132192	313385GE0	109	FHLB D N	12/3/2008	5/29/2009		1.200%	1.207%	1,829,000	1,818,208.90	1,768.03	1,828,097.69	8,120.76
132362	313385GH3	109	FHLB D N	12/11/2008	6/1/2009		0.450%	0.451%	909,000	907,045.65	238.61	908,046.81	762.55
132418	313589GL1	109	FNMA D N	12/15/2008	6/4/2009		0.500%	0.501%	2,823,000	2,816,295.37	666.54	2,819,980.96	3,019.05
128873	3133XRHF0	109	FHLB - BULLET	6/10/2008	6/10/2009		2.730%	2.730%	10,000,000	10,000,000.00	15,925.00	10,103,125.00	103,125.00
129633	313313GX0	109	FFCB D N	7/14/2008	6/15/2009		2.680%	2.749%	11,000,000	10,724,853.33	140,030.00	10,987,395.83	122,512.50
131619	313385GX8	109	FHLB D N	11/3/2008	6/15/2009		2.600%	2.643%	150,000	147,573.33	639.17	149,828.13	1,615.63
132131	313385HB5	109	FHLB D N	12/1/2008	6/19/2009		1.253%	1.262%	3,350,000	3,326,680.28	3,614.56	3,346,068.40	15,773.56
131393	313397HE4	109	FHLMC D N	10/16/2008	6/22/2009		3.000%	3.064%	8,000,000	7,834,000.00	51,333.33	7,990,444.44	105,111.11
129129	3133XRP46	109	FHLB - BULLET	6/23/2008	6/23/2009		3.000%	3.059%	8,000,000	7,997,722.87	5,333.33	8,100,000.00	102,277.13
131930	313385HG4	109	FHLB D N	11/20/2008	6/24/2009		1.800%	1.820%	200,000	197,840.00	420.00	199,758.33	1,498.33
131999	313385HJ8	109	FHLB D N	11/24/2008	6/26/2009		2.364%	2.398%	100,000	98,594.73	249.53	99,877.78	1,033.52
132616	3136F9Z48	109	FNMA STEP UP	12/30/2008	6/30/2009	3/30/2009	2.125%	2.125%	6,500,000	6,500,000.00	383.68	6,504,062.50	4,062.50
132504	313589HP1	109	FNMA D N	12/19/2008	7/1/2009		0.400%	0.401%	6,000,000	5,987,066.67	866.67	5,989,441.67	1,508.33
129758	912795Q87	109	TREASURY BILLS	7/21/2008	7/2/2009		2.140%	2.185%	20,000,000	19,588,644.44	194,977.78	19,975,000.00	191,377.78
132212	313385HV1	109	FHLB D N	12/3/2008	7/7/2009		1.250%	1.259%	1,304,000	1,294,220.00	1,313.06	1,301,629.26	6,096.20
132222	313385JC1	109	FHLB D N	12/4/2008	7/14/2009		1.120%	1.128%	2,870,000	2,850,177.87	2,500.09	2,864,586.86	11,908.90
129818	31331Y4Q0	109	FFCB - BULLET	7/24/2008	7/24/2009		2.950%	2.950%	5,000,000	5,000,000.00	64,326.39	5,070,312.50	70,312.50
129961	912795Q95	109	TREASURY BILLS	7/31/2008	7/30/2009		2.260%	2.313%	10,000,000	9,771,488.90	96,677.77	9,984,375.00	116,208.33
132173	313385JY3	109	FHLB D N	12/2/2008	8/3/2009		1.450%	1.464%	1,300,000	1,287,223.89	1,570.83	1,297,295.28	8,500.56
131751	313397JY8	109	FHLMC D N	11/10/2008	8/3/2009		1.850%	1.876%	7,698,000	7,592,772.62	20,570.77	7,681,983.88	68,640.49
132174	313385KW5	109	FHLB D N	12/2/2008	8/25/2009		1.400%	1.415%	1,000,000	989,655.56	1,166.67	997,705.56	6,883.33
132629	313385LD6	109	FHLB D N	12/31/2008	9/1/2009		0.700%	0.703%	100,000	99,525.56	1.94	99,615.25	87.75
132032	313385LM6	109	FHLB D N	11/25/2008	9/9/2009		1.650%	1.672%	1,769,000	1,745,649.20	2,999.93	1,761,969.70	13,320.57
132373	313385LN4	109	FHLB D N	12/15/2008	9/10/2009		0.640%	0.643%	4,000,000	3,980,871.11	1,208.89	3,984,040.00	1,960.00
132295	313385LS3	109	FHLB D N	12/10/2008	9/14/2009		0.800%	0.805%	3,710,000	3,687,080.44	1,813.78	3,694,962.13	6,067.91

MIAMI-DADE COUNTY
REPORT WRITER
AS OF DATE: December 31, 2008
SORTING ORDER: FUND ICC#

INVSMT NUMBER	CUSIP NUMBER	FUND NUMBER	DESCRIPTION	PURCHASE SET DATE	MATURITY DATE	CALL DATE	INTEREST RATE	YTM TRADING	SCHEDULED PAR VALUE	CURRENT BOOK VALUE	PERIOD-END INTEREST ACCRL	MARKET VALUE	UNREALIZED GAIN/LOSS
132505	313385LU8	109	FHLB D N	12/19/2008	9/16/2009		0.500%	0.502%	35,605,000	35,470,986.74	6,428.68	35,459,553.58	(17,861.85)
132507	313385LW4	109	FHLB D N	12/19/2008	9/18/2009		0.500%	0.502%	2,828,000	2,817,277.17	510.61	2,816,358.07	(1,429.71)
132565	313385MA1	109	FHLB D N	12/26/2008	9/22/2009		0.620%	0.623%	2,000,000	1,990,700.00	206.67	1,991,640.00	733.33
132566	313385MA1	109	FHLB D N	12/26/2008	9/22/2009		0.620%	0.623%	2,200,000	2,189,770.00	227.33	2,190,804.00	806.67
132503	313589MK6	109	FNMA D N	12/19/2008	10/1/2009		0.600%	0.603%	20,000,000	19,904,666.67	4,333.33	19,912,500.00	3,500.00
131210	3133XSE53	109	FHLB C I	10/2/2008	10/2/2009	1/2/2009	3.800%	3.800%	10,000,000	10,000,000.00	93,944.44	10,000,000.00	0.00
132257	3133XSBP2	109	FHLB C I	12/5/2008	10/2/2009	1/2/2009	3.000%	2.865%	10,000,000	10,063,200.00	74,166.67	10,000,000.00	(10,700.00)
131931	3128X75D2	109	FHLMC C I	11/20/2008	11/20/2009	2/20/2009	2.250%	2.250%	5,000,000	5,000,000.00	12,812.50	5,009,375.00	9,375.00
132536	313385QF6	109	FHLB D N	12/23/2008	12/8/2009		0.808%	0.814%	2,610,000	2,589,497.00	527.22	2,592,871.88	2,847.66
132598	313385QF6	109	FHLB D N	12/29/2008	12/8/2009		0.800%	0.806%	4,114,000	4,082,550.76	274.27	4,087,001.88	4,176.85
132626	313385QU3	109	FHLB D N	12/30/2008	12/21/2009		0.770%	0.776%	349,100	346,441.80	14.93	346,699.94	243.21
132630	313385RE8	109	FHLB D N	12/31/2008	12/31/2009		0.700%	0.705%	350,000	347,515.97	6.81	347,484.38	(38.41)
127331	31398APJ5	109	FNMA BULLET	3/14/2008	3/10/2010		3.000%	3.000%	7,000,000	7,000,000.00	64,750.00	7,159,687.50	159,687.50
128535	31398ARK0	109	FNMA C I	5/21/2008	5/21/2010	5/21/2009	3.250%	3.250%	10,000,000	10,000,000.00	36,111.11	10,084,375.00	84,375.00
132323	31331GGS2	109	FFCB - BULLET	12/11/2008	6/11/2010		2.000%	2.000%	11,000,000	11,000,000.00	12,222.22	11,161,562.50	161,562.50
132324	31331GGS2	109	FFCB - BULLET	12/11/2008	6/11/2010		2.000%	2.000%	10,000,000	10,000,000.00	11,111.11	10,146,875.00	146,875.00
132325	31331GGS2	109	FFCB - BULLET	12/11/2008	6/11/2010		2.000%	2.000%	5,000,000	5,000,000.00	5,555.56	5,073,437.50	73,437.50
129494	31331Y2P4	109	FFCB - BULLET	7/7/2008	7/7/2010		3.300%	3.300%	4,350,000	4,350,000.00	69,382.50	4,506,328.13	156,328.13
132258	3133XRVD9	109	FHLB C I	12/5/2008	7/28/2010	1/28/2009	3.750%	3.568%	4,000,000	4,064,316.67	63,750.00	4,008,750.00	(2,650.00)
129891	31331Y4J6	109	FFCB C I	7/28/2008	7/28/2010	1/28/2009	3.500%	3.500%	15,000,000	15,000,000.00	223,125.00	15,032,812.50	32,812.50
130741	31331GBC2	109	FFCB C I	9/15/2008	9/15/2010	9/15/2009	3.300%	3.300%	4,000,000	4,000,000.00	38,866.67	4,068,750.00	68,750.00
131857	3136F9P64	109	FNMA C I	11/18/2008	11/18/2010	2/18/2009	3.000%	3.000%	6,000,000	6,000,000.00	21,500.00	6,013,125.00	13,125.00
132601	3128X8CD2	109	FHLMC C I	12/30/2008	12/30/2010	3/30/2009	2.125%	2.125%	5,000,000	5,000,000.00	295.14	5,006,250.00	6,250.00
129474	3136F9XV0	109	FNMA C I	7/7/2008	1/7/2011	1/7/2009	4.200%	4.200%	20,000,000	20,000,000.00	406,000.00	20,012,500.00	12,500.00
129634	3136F9FW8	109	FNMA C I	4/14/2008	1/14/2011	4/14/2009	3.000%	3.077%	5,000,000	4,990,915.42	69,583.33	5,031,250.00	40,334.58
126594	3128X6U38	109	FHLMC C I	2/4/2008	2/4/2011	2/4/2009	3.375%	3.375%	5,000,000	5,000,000.00	68,906.25	5,010,937.50	10,937.50
126661	3128X6U38	109	FHLMC C I	2/6/2008	2/4/2011	2/4/2009	3.375%	3.375%	6,650,000	6,650,000.00	91,645.32	6,664,546.88	14,546.88
126716	3133XPL36	109	FHLB C I	2/11/2008	2/11/2011	2/11/2009	3.250%	3.261%	5,000,000	4,998,750.46	63,194.44	5,014,062.50	15,312.04
126717	3133XPL36	109	FHLB C I	2/11/2008	2/11/2011	2/11/2009	3.250%	3.268%	5,000,000	4,997,917.43	63,194.44	5,014,062.50	16,145.07
130850	31331YXM7	109	FFCB C I	9/18/2008	3/10/2011	3/10/2009	3.125%	3.486%	4,825,000	4,787,338.19	46,490.88	4,846,109.38	62,121.88
130917	31331GCCD9	109	FFCB C I	9/22/2008	3/22/2011	1/2/2009	3.500%	3.500%	12,100,000	12,100,000.00	116,462.50	12,100,000.00	0.00
132264	3136F9TX1	109	FNMA C I	12/8/2008	3/23/2011	3/23/2009	3.750%	3.519%	1,905,000	1,929,407.81	19,446.87	1,917,501.56	2,976.56
127849	3128X7FB5	109	FHLMC C I	4/15/2008	4/15/2011	1/15/2009	3.500%	3.500%	5,000,000	5,000,000.00	36,944.44	5,004,687.50	4,687.50
131348	31331GDE6	109	FFCB C I	10/14/2008	10/14/2011	10/14/2009	3.700%	3.707%	5,000,000	4,999,000.00	39,569.44	5,089,062.50	90,062.50
131430	3128X7ZL7	109	FHLMC C I	10/21/2008	10/21/2011	4/21/2009	4.150%	4.150%	10,000,000	10,000,000.00	80,694.44	10,071,875.00	71,875.00
		109 Total							736,032,100	731,711,714.37	4,791,087.85	737,381,246.02	3,540,005.26
131769	912795J77	117	TREASURY BILLS	11/13/2008	1/15/2009		0.070%	0.070%	695,000	694,914.86	66.22	695,000.00	18.92
		117 Total							695,000	694,914.86	66.22	695,000.00	18.92
129693	912795J77	119	TREASURY BILLS	7/17/2008	1/15/2009		1.820%	1.837%	1,030,000	1,020,522.86	8,748.13	1,030,000.00	729.01
		119 Total							1,030,000	1,020,522.86	8,748.13	1,030,000.00	729.01
129694	912795J77	122	TREASURY BILLS	7/17/2008	1/15/2009		1.820%	1.837%	475,000	470,629.47	4,034.34	475,000.00	336.19
		122 Total							475,000	470,629.47	4,034.34	475,000.00	336.19
131394	912795L41	123	TREASURY BILLS	10/16/2008	4/16/2009		0.960%	0.965%	1,206,000	1,200,146.88	2,476.32	1,205,623.13	2,999.93
		123 Total							1,206,000	1,200,146.88	2,476.32	1,205,623.13	2,999.93
128982	313589FA6	154	FNMA D N	6/13/2008	5/1/2009		2.800%	2.872%	7,209,000	7,028,454.60	113,261.40	7,206,116.40	64,400.40
		154 Total							7,209,000	7,028,454.60	113,261.40	7,206,116.40	64,400.40
131085	313385AB2	300	FHLB D N	9/29/2008	1/2/2009		3.300%	3.329%	1,000,000	991,291.67	8,616.66	999,999.72	91.39
131433	313385AB2	300	FHLB D N	10/21/2008	1/2/2009		2.400%	2.412%	202,000	201,016.93	969.60	201,999.94	13.41
130666	313385AE6	300	FHLB D N	9/10/2008	1/5/2009		2.270%	2.287%	1,000,000	992,622.50	7,125.28	999,998.89	251.11
132181	313385AE6	300	FHLB D N	12/2/2008	1/5/2009		0.400%	0.400%	2,000,000	1,999,244.44	666.67	1,999,997.78	86.67
131628	313397AE1	300	FHLMC D N	11/4/2008	1/5/2009		1.000%	1.002%	388,000	387,331.78	625.11	387,999.57	42.68
132102	313589AE3	300	FNMA D N	11/28/2008	1/5/2009		0.600%	0.600%	200,000	199,873.33	113.34	199,999.78	13.11
131434	313385AG1	300	FHLB D N	10/21/2008	1/7/2009		2.100%	2.110%	1,000,000	995,450.00	4,200.00	999,998.33	348.33
131448	313385AG1	300	FHLB D N	10/22/2008	1/7/2009		2.150%	2.160%	200,000	199,080.28	848.05	199,999.67	71.34

MIAMI-DADE COUNTY
REPORT WRITER
AS OF DATE: December 31, 2008
SORTING ORDER: FUND ICC#

INVSMT NUMBER	CUSIP NUMBER	FUND NUMBER	DESCRIPTION	PURCHASE SET DATE	MATURITY DATE	CALL DATE	INTEREST RATE	YTM TRADING	SCHEDULED PAR VALUE	CURRENT BOOK VALUE	PERIOD-END INTEREST ACCRL	MARKET VALUE	UNREALIZED GAIN/LOSS
131595	313385AG1	300	FHLB D N	11/3/2008	1/7/2009		1.100%	1.102%	125,000	124,751.74	225.34	124,999.79	22.71
132158	313385AJ5	300	FHLB D N	12/1/2008	1/9/2009		0.500%	0.500%	563,000	562,695.04	242.40	562,998.75	61.31
131985	313397AJ0	300	FHLMC D N	11/21/2008	1/9/2009		1.000%	1.001%	213,000	212,710.08	242.59	212,999.53	46.86
132378	313385AM8	300	FHLB D N	12/15/2008	1/12/2009		0.250%	0.250%	159,000	158,969.08	18.77	158,999.51	11.66
132202	313397AM3	300	FHLMC D N	12/3/2008	1/12/2009		0.450%	0.450%	250,000	249,875.00	90.63	249,999.24	33.61
132179	313397AN1	300	FHLMC D N	12/2/2008	1/13/2009		0.500%	0.808%	700,000	699,591.67	291.66	699,997.67	114.34
132297	313385AQ9	300	FHLB D N	12/10/2008	1/15/2009		0.250%	0.250%	149,000	148,962.75	22.76	148,999.42	13.91
132180	313589AQ6	300	FNMA D N	12/2/2008	1/15/2009		0.500%	0.500%	750,000	749,541.67	312.50	749,997.08	142.91
132203	313589AQ6	300	FNMA D N	12/3/2008	1/15/2009		0.450%	0.450%	400,000	399,785.00	145.00	399,998.44	68.44
132107	313385AR7	300	FHLB D N	11/28/2008	1/16/2009		0.500%	0.500%	300,000	299,795.83	141.67	299,998.75	61.25
132198	313385AR7	300	FHLB D N	12/3/2008	1/16/2009		0.450%	0.450%	220,000	219,879.00	79.75	219,999.08	40.33
130667	313385AV8	300	FHLB D N	9/10/2008	1/20/2009		2.350%	2.370%	1,191,000	1,180,737.55	8,785.28	1,190,993.71	1,470.88
132199	313385AV8	300	FHLB D N	12/3/2008	1/20/2009		0.450%	0.450%	439,000	438,736.60	159.14	438,997.68	101.94
131591	313589AV5	300	FNMA D N	11/3/2008	1/20/2009		1.350%	1.354%	1,000,000	997,075.00	2,212.50	999,994.72	707.22
132555	313385AW6	300	FHLB D N	12/24/2008	1/21/2009		0.200%	0.200%	1,000,000	999,844.44	44.45	999,994.44	105.55
131590	313385BB1	300	FHLB D N	11/3/2008	1/26/2009		1.160%	1.163%	1,500,000	1,495,940.00	2,851.67	1,499,989.58	1,197.91
132018	313385BD7	300	FHLB D N	11/25/2008	1/28/2009		0.800%	0.801%	800,000	798,862.22	657.78	799,994.00	474.00
131593	313385BE5	300	FHLB D N	11/3/2008	1/29/2009		1.150%	1.153%	1,300,000	1,296,387.08	2,450.14	1,299,989.89	1,152.67
131618	313385BE5	300	FHLB D N	11/3/2008	1/29/2009		1.000%	1.002%	1,500,000	1,496,375.00	2,458.33	1,499,988.33	1,155.00
132298	313589BF9	300	FNMA D N	12/10/2008	1/30/2009		0.200%	0.200%	282,000	281,920.10	34.47	281,997.73	43.16
131481	313385BJ4	300	FHLB D N	10/23/2008	2/2/2009		2.540%	2.558%	400,000	397,121.33	1,975.56	399,996.44	899.55
132528	313589BJ1	300	FNMA D N	12/22/2008	2/2/2009		0.200%	0.200%	300,000	299,930.00	16.67	299,997.33	50.66
132204	313385BL9	300	FHLB D N	12/3/2008	2/4/2009		0.600%	0.601%	1,000,000	998,950.00	483.33	999,990.56	557.23
132019	313589BR3	300	FNMA D N	11/25/2008	2/9/2009		1.000%	1.002%	285,000	284,398.33	292.92	284,996.91	305.66
132205	313589BR3	300	FNMA D N	12/3/2008	2/9/2009		0.550%	0.551%	450,000	449,532.50	199.38	449,995.13	263.25
132379	313385BS4	300	FHLB D N	12/15/2008	2/10/2009		0.250%	0.250%	472,000	471,813.17	55.72	471,994.76	125.87
130210	912795K34	300	TREASURY BILLS	8/14/2008	2/12/2009		1.960%	1.980%	1,000,000	990,091.11	7,622.22	1,000,000.00	2,286.67
132363	313385BZ8	300	FHLB D N	12/12/2008	2/17/2009		0.200%	0.200%	384,000	383,857.07	42.67	383,994.99	95.25
132602	313385CC8	300	FHLB D N	12/30/2008	2/20/2009		0.100%	0.100%	905,000	904,869.28	5.03	904,987.43	113.12
132529	313397CF6	300	FHLMC D N	12/22/2008	2/23/2009		0.200%	0.200%	250,000	249,912.50	13.89	249,996.32	69.93
132219	313385CG9	300	FHLB D N	12/4/2008	2/24/2009		0.450%	0.450%	650,000	649,333.75	227.50	649,990.25	429.00
131984	313385CH7	300	FHLB D N	11/21/2008	2/25/2009		1.000%	1.003%	660,000	658,240.00	751.67	659,989.92	998.25
132415	313397CH2	300	FHLMC D N	12/15/2008	2/25/2009		0.200%	0.200%	668,000	667,732.80	63.09	667,989.79	193.90
132380	313589CH4	300	FNMA D N	12/15/2008	2/25/2009		0.250%	0.250%	1,150,000	1,149,425.00	135.76	1,149,982.43	421.67
132299	313589CJ0	300	FNMA D N	12/10/2008	2/26/2009		0.200%	0.200%	470,000	469,796.33	57.45	469,992.69	138.91
132376	313589CJ0	300	FNMA D N	12/15/2008	2/26/2009		0.300%	0.300%	193,000	192,882.59	27.34	192,997.00	87.07
132603	313385CK0	300	FHLB D N	12/30/2008	2/27/2009		0.200%	0.200%	435,000	434,857.42	4.83	434,993.11	130.86
132364	313385CN4	300	FHLB D N	12/12/2008	3/2/2009		0.200%	0.200%	300,000	299,866.67	33.33	299,990.00	90.00
132296	313397CN9	300	FHLMC D N	12/10/2008	3/2/2009		0.200%	0.200%	281,000	280,871.99	34.34	280,990.63	84.30
132377	313589DC4	300	FNMA D N	12/15/2008	3/16/2009		0.300%	0.300%	476,000	475,639.03	67.43	475,980.43	273.97
132200	313397DE8	300	FHLMC D N	12/3/2008	3/18/2009		0.750%	0.752%	1,000,000	997,812.50	604.17	999,957.78	1,541.11
132300	313397DS7	300	FHLMC D N	12/10/2008	3/30/2009		0.250%	0.250%	875,000	874,331.60	133.68	874,957.22	491.94
132375	313589DS9	300	FNMA D N	12/15/2008	3/30/2009		0.250%	0.250%	1,000,000	999,270.83	118.06	999,951.11	562.22
131411	313385DU7	300	FHLB D N	10/17/2008	4/1/2009		3.050%	3.094%	1,500,000	1,478,904.17	9,658.33	1,499,700.00	11,137.50
132206	313589DU4	300	FNMA D N	12/3/2008	4/1/2009		0.900%	0.903%	510,000	508,482.75	369.75	509,898.00	1,045.50
132604	313397EG2	300	FHLMC D N	12/30/2008	4/13/2009		0.250%	0.250%	704,000	703,491.56	9.78	703,840.43	339.09
132176	313589EJ8	300	FNMA D N	12/2/2008	4/15/2009		1.100%	1.105%	1,190,000	1,185,127.61	1,090.83	1,189,724.98	3,506.54
132208	313397EL1	300	FHLMC D N	12/3/2008	4/17/2009		1.000%	1.004%	1,500,000	1,494,375.00	1,208.33	1,499,646.67	4,063.34
132201	313385EP7	300	FHLB D N	12/3/2008	4/20/2009		0.980%	0.984%	350,000	348,685.17	276.30	349,915.22	953.75
132635	313385EZ5	300	FHLB D N	12/31/2008	4/30/2009		0.400%	0.401%	205,000	204,726.67	2.28	204,945.79	216.84
132175	313385FD3	300	FHLB D N	12/2/2008	5/4/2009		1.150%	1.156%	500,000	497,556.25	479.17	499,795.00	1,759.58
132617	3136F9Z48	300	FNMA STEP UP	12/30/2008	6/30/2009	3/30/2009	2.125%	2.125%	1,000,000	1,000,000.00	59.03	1,000,625.00	625.00
132618	3136F9Z48	300	FNMA STEP UP	12/30/2008	6/30/2009	3/30/2009	2.125%	2.125%	1,000,000	1,000,000.00	59.03	1,000,625.00	625.00
132342	313589KC6	300	FNMA D N	12/11/2008	8/7/2009		1.720%	1.740%	45,000	44,486.15	45.15	44,904.63	373.33

MIAMI-DADE COUNTY
REPORT WRITER
AS OF DATE: December 31, 2008
SORTING ORDER: FUND ICC#

INVSMT NUMBER	CUSIP NUMBER	FUND NUMBER	DESCRIPTION	PURCHASE SET DATE	MATURITY DATE	CALL DATE	INTEREST RATE	YTM TRADING	SCHEDULED PAR VALUE	CURRENT BOOK VALUE	PERIOD-END INTEREST ACCRL	MARKET VALUE	UNREALIZED GAIN/LOSS
132554	3128X8BP6	300	FHLMC C I	12/23/2008	12/23/2009	3/23/2009	1.200%	1.200%	1,500,000	1,500,000.00	400.00	1,500,468.75	468.75
		300 Total							42,439,000	42,324,716.91	71,255.56	42,438,722.72	43,268.31
131059	313385AB2	411	FHLB D N	9/29/2008	1/2/2009		3.300%	3.329%	12,000,000	11,895,500.00	103,400.00	11,999,996.67	1,096.67
131084	313385AB2	411	FHLB D N	9/29/2008	1/2/2009		3.300%	3.329%	8,000,000	7,930,333.33	68,933.34	7,999,997.78	731.11
132605	64105GN26	411	CP D NESTLE CAPITAL CORP	12/30/2008	1/2/2009		0.010%	0.010%	15,000,000	14,999,987.50	8.33	14,999,766.67	(229.16)
132606	02581RN66	411	CP D AMERICAN EXPRESS COMPANY	12/30/2008	1/6/2009		0.020%	0.020%	12,000,000	11,999,953.33	13.33	11,999,066.67	(899.99)
130474	313385AG1	411	FHLB D N	8/29/2008	1/7/2009		2.708%	2.735%	1,500,000	1,485,218.83	14,104.17	1,499,997.50	674.50
128817	313313AH1	411	FFCB D N	6/5/2008	1/8/2009		2.350%	2.384%	1,500,000	1,478,752.08	20,562.50	1,499,997.08	682.50
131024	313385AM8	411	FHLB D N	9/25/2008	1/12/2009		3.200%	3.231%	12,000,000	11,883,733.33	104,533.34	11,999,963.33	11,696.66
129940	313385AP1	411	FHLB D N	7/30/2008	1/14/2009		2.690%	2.724%	9,677,000	9,555,521.39	112,078.48	9,676,965.06	9,365.19
129967	313385AR7	411	FHLB D N	7/31/2008	1/16/2009		2.650%	2.683%	2,181,000	2,153,867.75	24,724.06	2,180,990.91	2,399.10
132474	313385AR7	411	FHLB D N	12/17/2008	1/16/2009		0.206%	0.213%	1,288,000	1,287,778.89	110.56	1,287,994.63	105.18
131238	313589AV5	411	FNMA D N	10/6/2008	1/20/2009		2.000%	2.012%	10,000,000	9,941,111.11	48,333.33	9,999,947.22	10,502.78
132631	86789FN0	411	CP D SUNSHINE STATE GOV FIN	12/31/2008	1/29/2009		0.250%	0.250%	7,230,000	7,228,543.96	50.21	7,226,850.93	(1,743.24)
129968	313385BF2	411	FHLB D N	7/31/2008	1/30/2009		2.680%	2.717%	3,850,000	3,797,550.17	44,138.11	3,849,968.99	8,280.71
130211	912795K34	411	TREASURY BILLS	8/14/2008	2/12/2009		1.960%	1.980%	5,000,000	4,950,455.56	38,111.11	5,000,000.00	11,433.33
131162	313397CF6	411	FHLMC D N	9/30/2008	2/23/2009		3.007%	3.044%	2,000,000	1,975,609.89	15,536.17	1,999,970.56	8,824.50
127261	313385CJ3	411	FHLB D N	3/12/2008	2/26/2009		2.100%	2.144%	5,300,000	5,191,482.50	91,204.17	5,299,917.56	17,230.89
131118	313385DK9	411	FHLB D N	9/30/2008	3/23/2009		3.100%	3.147%	1,391,000	1,370,158.18	11,139.59	1,390,937.41	9,639.64
130993	912795K91	411	TREASURY BILLS	9/25/2008	3/26/2009		1.700%	1.715%	10,000,000	9,914,055.60	46,277.75	10,000,000.00	39,666.65
131119	313385DS2	411	FHLB D N	9/30/2008	3/30/2009		3.200%	3.252%	1,000,000	826,911.11	8,266.67	999,951.11	7,773.33
131398	313385DU7	411	FHLB D N	10/16/2008	4/1/2009		3.050%	3.094%	5,000,000	4,929,256.94	32,618.06	4,999,000.00	37,125.00
131399	313385DU7	411	FHLB D N	10/16/2008	4/1/2009		2.700%	2.734%	6,000,000	5,924,850.00	34,650.00	5,998,800.00	39,300.00
122148	31331XVG4	411	FFCB BULLET	5/25/2007	4/13/2009		4.875%	5.080%	10,000,000	9,990,280.12	105,625.00	10,128,125.00	137,844.88
130465	313385EH5	411	FHLB D N	8/29/2008	4/14/2009		2.850%	2.902%	5,000,000	4,909,750.00	49,479.17	4,998,855.56	39,626.39
128022	3133XQV66	411	FHLB BULLET	4/25/2008	4/21/2009		2.520%	2.727%	5,000,000	4,994,986.15	24,500.00	5,032,812.50	37,826.35
128978	912795Q79	411	TREASURY BILLS	6/13/2008	6/4/2009		2.465%	2.527%	10,000,000	9,726,238.89	138,313.89	9,996,875.00	102,322.22
129688	313313G05	411	FFCB D N	7/16/2008	6/8/2009		2.730%	2.799%	1,300,000	1,267,763.25	16,660.58	1,298,573.61	14,149.78
128877	3133XRHF0	411	FHLB - BULLET	6/10/2008	6/10/2009		2.730%	2.730%	10,000,000	10,000,000.00	15,925.00	10,103,125.00	103,125.00
130855	313313GY8	411	FFCB D N	9/18/2008	6/16/2009		2.450%	2.496%	500,000	490,778.47	3,572.92	499,423.61	5,072.33
129127	3133XRP46	411	FHLB - BULLET	6/23/2008	6/23/2009		3.000%	3.059%	10,000,000	9,997,153.59	6,666.67	10,125,000.00	127,846.41
129811	912795Q87	411	TREASURY BILLS	7/23/2008	7/2/2009		2.230%	2.279%	10,000,000	9,786,911.11	100,350.00	9,987,500.00	100,238.89
132638	313385JN7	411	FHLB D N	12/31/2008	7/24/2009		0.500%	0.501%	500,000	498,576.39	6.94	499,008.33	425.00
132632	313397JS1	411	FHLMC D N	12/31/2008	7/28/2009		0.440%	0.441%	15,000,000	14,961,683.33	183.33	14,969,666.67	7,800.01
129969	912795Q95	411	TREASURY BILLS	7/31/2008	7/30/2009		2.300%	2.355%	10,000,000	9,767,444.44	98,388.89	9,984,375.00	118,541.67
130963	912795S28	411	TREASURY BILLS	9/24/2008	8/27/2009		1.910%	1.945%	10,000,000	9,821,202.78	52,525.00	9,987,500.00	113,772.22
132633	313397MJ7	411	FHLMC D N	12/31/2008	9/30/2009		0.650%	0.653%	8,000,000	7,960,566.67	144.44	7,967,500.00	6,788.89
131850	31331GEN5	411	FFCB C I	11/17/2008	11/17/2009	2/17/2009	2.050%	2.050%	4,000,000	4,000,000.00	10,022.22	4,007,500.00	7,500.00
132634	313385QP4	411	FHLB D N	12/31/2008	12/16/2009		0.800%	0.806%	2,000,000	1,984,444.44	44.44	1,986,250.00	1,761.12
130258	31331Y6H8	411	FFCB - BULLET	8/18/2008	2/18/2010		3.150%	3.150%	10,000,000	10,000,000.00	116,375.00	10,268,750.00	268,750.00
127265	31398APK2	411	FNMA BULLET	3/12/2008	3/5/2010		3.050%	3.050%	8,115,000	8,115,000.00	79,752.41	8,302,659.38	187,659.38
127207	3128X66R2	411	FHLMC C I	3/10/2008	3/10/2010	3/10/2009	3.000%	3.000%	5,000,000	5,000,000.00	46,250.00	5,018,750.00	18,750.00
127264	3136F9CN1	411	FNMA C I	3/12/2008	3/12/2010	3/12/2010	3.250%	3.250%	4,000,000	4,000,000.00	39,361.11	4,018,750.00	18,750.00
128109	3136F9MU4	411	FNMA C I	4/30/2008	4/30/2010	4/30/2009	3.000%	3.000%	5,000,000	5,000,000.00	25,416.67	5,035,937.50	35,937.50
132326	31331GGS2	411	FFCB - BULLET	12/11/2008	6/11/2010		2.000%	2.000%	5,000,000	5,000,000.00	5,555.56	5,073,437.50	73,437.50
132327	31331GGS2	411	FFCB - BULLET	12/11/2008	6/11/2010		2.000%	2.000%	5,000,000	5,000,000.00	5,555.56	5,073,437.50	73,437.50
132328	31331GGS2	411	FFCB - BULLET	12/11/2008	6/11/2010		2.000%	2.000%	4,800,000	4,800,000.00	5,333.33	4,870,500.00	70,500.00
129011	31398ASH6	411	FNMA C I	6/16/2008	6/16/2010	6/16/2009	3.550%	3.550%	5,000,000	5,000,000.00	7,395.83	5,065,625.00	65,625.00
129481	3133XRN30	411	FHLB C I	7/7/2008	7/7/2010	7/7/2009	4.000%	4.000%	6,600,000	6,600,000.00	127,600.00	6,703,125.00	103,125.00
129480	31331Y2P4	411	FFCB - BULLET	7/7/2008	7/7/2010		3.300%	3.300%	5,000,000	5,000,000.00	79,750.00	5,179,687.50	179,687.50
129895	31331Y4J6	411	FFCB C I	7/28/2008	7/28/2010	1/28/2009	3.500%	3.500%	5,000,000	5,000,000.00	74,375.00	5,010,937.50	10,937.50
130715	31331GAE9	411	FFCB - BULLET	9/12/2008	9/2/2010		3.200%	3.200%	10,000,000	10,008,888.89	105,777.78	10,334,375.00	334,375.00
130746	31331GBC2	411	FFCB C I	9/15/2008	9/15/2010	9/15/2009	3.300%	3.300%	8,500,000	8,500,000.00	82,591.67	8,646,093.75	146,093.75
130964	3133XSAH1	411	FHLB C I	9/24/2008	9/24/2010	3/24/2009	3.250%	3.250%	10,000,000	10,000,000.00	87,569.44	10,059,375.00	59,375.00

MIAMI-DADE COUNTY
REPORT WRITER
AS OF DATE: December 31, 2008
SORTING ORDER: FUND ICC#

INVSMT NUMBER	CUSIP NUMBER	FUND NUMBER	DESCRIPTION	PURCHASE SET DATE	MATURITY DATE	CALL DATE	INTEREST RATE	YTM TRADING	SCHEDULED PAR VALUE	CURRENT BOOK VALUE	PERIOD-END INTEREST ACCRL	MARKET VALUE	UNREALIZED GAIN/LOSS
131093	912828JL5	411	TREASURY NOTES	9/30/2008	9/30/2010		2.000%	2.085%	5,000,000	4,991,796.88	25,690.61	5,126,562.50	134,765.62
131330	3136F9K77	411	FNMA C I	10/10/2008	10/8/2010	1/8/2009	4.000%	4.012%	5,000,000	4,999,961.11	46,111.11	5,001,562.50	2,712.50
126597	3128X6U38	411	FHLMC C I	2/4/2008	2/4/2011	2/4/2009	3.375%	3.375%	5,000,000	5,000,000.00	68,906.25	5,010,937.50	10,937.50
126721	3133XPL36	411	FHLB C I	2/11/2008	2/11/2011	2/11/2009	3.250%	3.261%	10,000,000	9,997,500.91	126,388.89	10,028,125.00	30,624.09
127755	31398ANH1	411	FNMA C I	4/8/2008	2/25/2011	2/25/2009	3.250%	3.250%	7,000,000	7,000,000.00	79,625.00	7,024,062.50	24,062.50
127825	31331YD49	411	FFCB C I	4/11/2008	4/11/2011	4/4/2011	3.450%	3.450%	10,000,000	10,000,000.00	76,666.67	10,003,125.00	3,125.00
130856	31331Y5T3	411	FFCB C I	9/18/2008	8/11/2011	8/11/2009	4.000%	4.000%	5,000,000	5,020,555.56	77,777.78	5,093,750.00	93,750.00
131349	31331GDE6	411	FFCB C I	10/14/2008	10/14/2011	10/14/2009	3.700%	3.707%	5,000,000	4,999,000.00	39,569.44	5,089,062.50	90,062.50
		411 Total							392,232,000	390,098,114.43	2,870,596.88	394,520,798.49	3,174,776.74
131378	313589BR3	414	FNMA D N	10/15/2008	2/9/2009		2.100%	2.114%	21,000	20,856.68	95.55	20,999.77	47.54
130248	912795K34	414	TREASURY BILLS	8/15/2008	2/12/2009		1.960%	1.980%	230,397	228,126.57	1,743.59	230,397.00	526.84
130249	912795K34	414	TREASURY BILLS	8/15/2008	2/12/2009		1.960%	1.980%	6,603	6,537.93	49.97	6,603.00	15.10
130683	912795K75	414	TREASURY BILLS	9/11/2008	3/12/2009		1.840%	1.857%	13,000	12,879.07	74.42	13,000.00	46.51
130718	313385CZ7	414	FHLB D N	9/12/2008	3/13/2009		2.270%	2.296%	213,000	210,555.59	1,490.82	212,991.60	945.19
131379	313385CZ7	414	FHLB D N	10/15/2008	3/13/2009		2.500%	2.526%	147,000	145,478.96	796.25	146,994.20	718.99
131380	313589DT7	414	FNMA D N	10/15/2008	3/31/2009		2.550%	2.581%	1,039,560	1,027,262.87	5,743.57	1,039,508.60	6,502.16
131381	313589DT7	414	FNMA D N	10/15/2008	3/31/2009		2.550%	2.581%	395,440	390,762.28	2,184.80	395,420.45	2,473.37
131201	313385DU7	414	FHLB D N	10/1/2008	4/1/2009		3.150%	3.201%	1,073,643	1,056,545.24	8,642.82	1,073,428.27	8,240.21
131202	313385DU7	414	FHLB D N	10/1/2008	4/1/2009		3.150%	3.201%	953,438	938,254.50	7,675.18	953,247.31	7,317.63
131203	313385DU7	414	FHLB D N	10/1/2008	4/1/2009		3.150%	3.201%	377,919	371,900.64	3,042.25	377,843.42	2,900.53
131382	313589EJ8	414	FNMA D N	10/15/2008	4/15/2009		2.600%	2.635%	169,000	166,778.59	952.03	168,960.94	1,230.32
132138	313589GC1	414	FNMA D N	12/1/2008	5/27/2009		1.130%	1.136%	853,853	849,109.14	830.85	853,437.46	3,497.47
132139	313589GC1	414	FNMA D N	12/1/2008	5/27/2009		1.130%	1.136%	928,147	922,990.37	903.14	927,695.30	3,801.79
132636	313385GR1	414	FHLB D N	12/31/2008	6/9/2009		0.500%	0.501%	600,000	598,666.67	8.33	599,337.50	662.50
132384	313385GX8	414	FHLB D N	12/15/2008	6/15/2009		0.250%	0.250%	100,151	100,024.42	11.82	100,036.24	0.00
132385	313385GX8	414	FHLB D N	12/15/2008	6/15/2009		0.250%	0.250%	811,838	810,811.93	95.84	810,907.77	0.00
132386	313385GX8	414	FHLB D N	12/15/2008	6/15/2009		0.250%	0.250%	32,628	32,586.76	3.85	32,590.61	0.00
132387	313385GX8	414	FHLB D N	12/15/2008	6/15/2009		0.250%	0.250%	94,498	94,378.57	11.16	94,389.72	(0.01)
132388	313385GX8	414	FHLB D N	12/15/2008	6/15/2009		0.250%	0.250%	1,413,789	1,412,002.12	166.91	1,412,169.03	0.00
132389	313385GX8	414	FHLB D N	12/15/2008	6/15/2009		0.250%	0.250%	97,376	97,252.93	11.50	97,264.42	(0.01)
132390	313385GX8	414	FHLB D N	12/15/2008	6/15/2009		0.250%	0.250%	797,975	796,966.45	94.21	797,060.65	(0.01)
132391	313385GX8	414	FHLB D N	12/15/2008	6/15/2009		0.250%	0.250%	495,231	494,605.08	58.47	494,663.55	0.00
132392	313385GX8	414	FHLB D N	12/15/2008	6/15/2009		0.250%	0.250%	375,797	375,322.03	44.37	375,366.40	0.00
132393	313385GX8	414	FHLB D N	12/15/2008	6/15/2009		0.250%	0.250%	219,406	219,128.70	25.90	219,154.60	0.00
132394	313385GX8	414	FHLB D N	12/15/2008	6/15/2009		0.250%	0.250%	201,826	201,570.91	23.83	201,594.74	0.00
132416	313385GX8	414	FHLB D N	12/15/2008	6/15/2009		0.250%	0.250%	124,619	124,461.50	14.71	124,476.21	0.00
132417	313385GX8	414	FHLB D N	12/15/2008	6/15/2009		0.250%	0.250%	164,866	164,657.63	19.46	164,677.09	0.00
132656	313385GX8	414	FHLB D N	12/31/2008	6/15/2009		0.500%	0.501%	100,000	99,769.44	1.39	99,885.42	114.59
		414 Total							12,052,000	11,970,243.57	34,816.99	12,044,101.27	39,040.71
130684	REPO 14	500	REPO Chalks Airline vs Mia Spo #3	9/9/2008	3/12/2009		1.825%	1.825%	2,675	2,675.00	15.46	2,675.00	0.00
130775	REPO 14	500	REPO MTGE ELECTRONIC VS.	8/17/2005	3/12/2009		1.495%	1.495%	71,657	71,657.36	3,669.13	71,657.36	0.00
130776	REPO 14	500	REPO PEDRO PONS DECEASED	7/13/1998	3/12/2009		1.495%	1.495%	10,490	10,490.41	1,666.34	10,490.41	0.00
130777	REPO 14	500	REPO SOHOTALK VS GRANT	8/26/1999	3/12/2009		1.495%	1.495%	5,000	5,000.00	709.29	5,000.00	0.00
130829	REPO 14	500	REPO Hilaire Bass vs Fulya Kurt	5/27/2008	3/12/2009		1.495%	1.495%	248,761	248,761.10	2,262.38	248,761.10	0.00
130836	REPO 14	500	REPO Chalks Air vs Miami Sport 1	6/26/2008	3/12/2009		1.495%	1.495%	10,700	10,700.00	83.98	10,700.00	0.00
130837	REPO 14	500	REPO Chalks Air vs Miami Sport 2	8/14/2008	3/12/2009		1.495%	1.495%	2,675	2,675.00	15.55	2,675.00	0.00
131235	REPO 14	500	REPO Chalks Air vs Miami Sp #4	10/3/2008	3/12/2009		1.495%	1.495%	2,675	2,675.00	10.00	2,675.00	0.00
131675	REPO 14	500	REPO Chalks Airline vs Mia Sp#5	11/6/2008	3/12/2009		1.009%	1.009%	2,675	2,675.00	4.20	2,675.00	0.00
131936	REPO 14	500	Repo 1100LncolnRdvs1118LncolnLLC	11/19/2008	3/12/2009		0.700%	0.700%	59,358	59,357.91	49.63	59,357.91	0.00
132269	REPO 14	500	REPO Chalks Air vs Miami Spt #6	12/4/2008	3/12/2009		0.200%	0.200%	2,675	2,675.00	0.42	2,675.00	0.00
132270	REPO 14	500	REPO 1100 Licoln Rd vs 1118 Linc	12/4/2008	3/12/2009		0.200%	0.200%	19,786	19,785.97	3.08	19,785.97	0.00
132272	REPO 14	500	REPO Chalks Air vs Miami Sprt #7	12/5/2008	3/12/2009		0.200%	0.200%	13,375	13,375.00	2.01	13,375.00	0.00
		500 Total							452,503	452,502.75	8,491.47	452,502.75	0.00
130857	912795K83	511	TREASURY BILLS	9/18/2008	3/19/2009		1.370%	1.380%	800,000	794,459.11	3,196.67	800,000.00	2,344.22

MIAMI-DADE COUNTY
REPORT WRITER
AS OF DATE: December 31, 2008
SORTING ORDER: FUND ICC#

INVSMT NUMBER	CUSIP NUMBER	FUND NUMBER	DESCRIPTION	PURCHASE SET DATE	MATURITY DATE	CALL DATE	INTEREST RATE	YTM TRADING	SCHEDULED PAR VALUE	CURRENT BOOK VALUE	PERIOD-END INTEREST ACCRL	MARKET VALUE	UNREALIZED GAIN/LOSS
130838	313385DF0	511	FHLB D N	9/17/2008	3/19/2009		2.470%	2.501%	600,000	592,466.50	4,363.67	599,974.33	3,144.16
130839	313313KZ0	511	FFCB D N	9/17/2008	8/28/2009		2.420%	2.477%	600,000	586,085.00	4,275.33	598,406.67	8,046.34
		511 Total							2,000,000	1,973,010.61	11,835.67	1,998,381.00	13,534.72
129970	912795J93	522	TREASURY BILLS	7/31/2008	1/29/2009		1.880%	1.898%	1,000,000	990,495.56	8,042.22	1,000,000.00	1,462.22
		522 Total							1,000,000	990,495.56	8,042.22	1,000,000.00	1,462.22
132331	313589AB9	555	FNMA D N	12/11/2008	1/2/2009		0.100%	0.100%	210,000	209,987.17	12.25	209,999.94	0.52
132329	313385AE6	555	FHLB D N	12/11/2008	1/5/2009		0.100%	0.100%	670,000	669,953.47	39.09	669,999.26	6.70
132530	313385AG1	555	FHLB D N	12/22/2008	1/7/2009		0.150%	0.150%	350,000	349,976.67	14.58	349,999.42	8.17
132382	313385AH9	555	FHLB D N	12/15/2008	1/8/2009		0.100%	0.100%	200,000	199,986.67	9.44	199,999.61	3.50
132383	313385AH9	555	FHLB D N	12/15/2008	1/8/2009		0.150%	0.150%	200,000	199,980.00	14.17	199,999.61	5.44
132556	313385AN6	555	FHLB D N	12/24/2008	1/13/2009		0.200%	0.200%	600,000	599,933.33	26.67	599,998.00	38.00
132557	313385AX4	555	FHLB D N	12/24/2008	1/22/2009		0.150%	0.150%	300,000	299,963.75	10.00	299,998.25	24.50
132653	313385BD7	555	FHLB D N	12/31/2008	1/28/2009		0.100%	0.100%	625,000	624,951.39	1.74	624,995.31	42.18
		555 Total							3,155,000	3,154,732.45	127.94	3,154,989.40	129.01
132652	313385BL9	700	FHLB D N	12/31/2008	2/4/2009		0.010%	0.010%	2,800,000	2,799,972.78	0.78	2,799,973.56	0.00
		700 Total							2,800,000	2,799,972.78	0.78	2,799,973.56	0.00
129704	313385AB2	712	FHLB D N	7/17/2008	1/2/2009		2.650%	2.683%	5,300,000	5,234,066.53	65,543.33	5,299,998.53	388.67
130934	313385AB2	712	FHLB D N	9/23/2008	1/2/2009		2.800%	2.822%	302,000	299,627.62	2,348.89	301,999.92	23.41
131132	313385AB2	712	FHLB D N	9/30/2008	1/2/2009		3.300%	3.329%	1,396,000	1,383,971.13	11,900.90	1,395,999.61	127.58
131274	313385AE6	712	FHLB D N	10/7/2008	1/5/2009		2.050%	2.061%	1,352,800	1,345,866.90	6,624.96	1,352,798.50	306.64
131462	313589AE3	712	FNMA D N	10/22/2008	1/5/2009		2.060%	2.069%	1,084,600	1,079,945.26	4,406.49	1,084,598.79	247.04
132541	86789AN58	712	CP D SUNSHINE STATE GOV FIN	12/23/2008	1/5/2009		0.300%	0.300%	1,063,300	1,063,184.81	79.75	1,063,233.84	(30.72)
131722	313385AF3	712	FHLB D N	11/7/2008	1/6/2009		0.550%	0.551%	537,000	536,507.75	451.23	536,999.25	40.27
132610	02581RN66	712	CP D AMERICAN EXPRESS COMPANY	12/30/2008	1/6/2009		0.020%	0.020%	2,230,000	2,229,991.33	2.48	2,229,826.56	(167.25)
130517	313385AG1	712	FHLB D N	9/2/2008	1/7/2009		2.693%	2.719%	5,000,000	4,952,498.47	45,257.36	4,999,991.67	2,235.84
131772	91411SN71	712	CP D UNIVERSITY OF CALIFORNIA	11/13/2008	1/7/2009		1.400%	1.403%	5,008,300	4,997,587.80	9,543.60	5,007,832.56	701.16
132532	313385AM8	712	FHLB D N	12/22/2008	1/12/2009		0.080%	0.080%	1,000,000	999,953.33	22.22	999,996.94	21.39
132639	313385AM8	712	FHLB D N	12/31/2008	1/12/2009		0.050%	0.050%	300,000	299,995.00	0.42	299,999.08	3.66
132285	313385AQ9	712	FHLB D N	12/9/2008	1/15/2009		0.200%	0.200%	2,500,000	2,499,486.11	319.45	2,499,990.28	184.72
132641	313385AQ9	712	FHLB D N	12/31/2008	1/15/2009		0.050%	0.050%	1,500,000	1,499,968.75	2.08	1,499,994.17	23.34
131651	313385AW6	712	FHLB D N	11/5/2008	1/21/2009		1.000%	1.002%	650,000	648,609.72	1,029.17	649,996.39	357.50
132517	313397AY7	712	FHLMC D N	12/19/2008	1/23/2009		0.120%	0.120%	7,456,500	7,455,630.08	323.11	7,456,454.43	501.24
132082	313397BR1	712	FHLMC D N	11/28/2008	2/9/2009		0.650%	0.651%	3,004,500	3,000,539.90	1,844.43	3,004,467.45	2,083.12
132284	313589BR3	712	FNMA D N	12/9/2008	2/9/2009		0.250%	0.250%	670,000	669,711.53	107.01	669,992.74	174.20
132477	313397BT7	712	FHLMC D N	12/18/2008	2/11/2009		0.200%	0.200%	2,000,000	1,999,388.89	155.56	1,999,977.22	432.77
130875	313385CG9	712	FHLB D N	9/18/2008	2/24/2009		2.700%	2.733%	1,890,000	1,867,461.75	14,883.75	1,889,971.65	7,626.15
131219	313385CG9	712	FHLB D N	10/2/2008	2/24/2009		3.000%	3.037%	955,000	943,460.42	7,242.08	954,985.68	4,283.18
131685	313397CN9	712	FHLMC D N	11/6/2008	3/2/2009		1.080%	1.084%	1,936,700	1,929,960.28	3,253.66	1,936,635.44	3,421.50
132436	313385DE3	712	FHLB D N	12/17/2008	3/18/2009		0.260%	0.260%	1,000,000	999,342.78	108.33	999,957.78	506.67
131680	313397DF5	712	FHLMC D N	11/6/2008	3/19/2009		1.300%	1.306%	5,000,000	4,975,986.11	10,111.11	4,999,786.11	13,688.89
130997	912795K91	712	TREASURY BILLS	9/25/2008	3/26/2009		1.700%	1.715%	5,000,000	4,957,027.78	23,138.89	5,000,000.00	19,833.33
131679	313589DU4	712	FNMA D N	11/6/2008	4/1/2009		1.400%	1.408%	3,017,000	2,999,870.14	6,570.36	3,016,396.60	9,956.10
132472	313397DZ1	712	FHLMC D N	12/17/2008	4/6/2009		0.300%	0.300%	695,000	694,362.92	86.87	694,853.28	403.49
130876	313385EH5	712	FHLB D N	9/18/2008	4/14/2009		2.700%	2.743%	649,000	638,875.60	5,110.88	648,851.45	4,864.97
128029	3133XQV66	712	FHLB BULLET	4/25/2008	4/21/2009		2.520%	2.727%	5,000,000	4,994,986.15	24,500.00	5,032,812.50	37,826.35
132445	313397FE6	712	FHLMC D N	12/17/2008	5/5/2009		0.400%	0.401%	2,078,800	2,075,589.41	346.47	2,077,940.76	2,004.88
132655	313385GJ9	712	FHLB D N	12/31/2008	6/2/2009		0.350%	0.351%	700,000	698,958.75	6.81	699,261.11	295.55
132353	313589GJ6	712	FNMA D N	12/12/2008	6/2/2009		0.340%	0.341%	338,000	337,450.94	63.84	337,643.22	128.44
128883	3133XRHF0	712	FHLB - BULLET	6/10/2008	6/10/2009		2.730%	2.730%	3,000,000	3,000,000.00	4,777.50	3,030,937.50	30,937.50
132619	3136F9Z48	712	FNMA STEP UP	12/30/2008	6/30/2009	3/30/2009	2.125%	2.125%	3,000,000	3,000,000.00	177.08	3,001,875.00	1,875.00
129824	31331Y4Q0	712	FFCB - BULLET	7/24/2008	7/24/2009		2.950%	2.950%	4,745,000	4,745,000.00	61,045.74	4,811,726.56	66,726.56
132267	313385LS3	712	FHLB D N	12/8/2008	9/14/2009		0.900%	0.906%	3,426,200	3,402,216.60	2,055.72	3,412,312.47	8,040.15
132339	313385LW4	712	FHLB D N	12/11/2008	9/18/2009		0.550%	0.552%	2,500,000	2,489,267.36	802.08	2,489,708.33	(361.11)
132643	313397MJ7	712	FHLMC D N	12/31/2008	9/30/2009		0.650%	0.653%	2,500,000	2,487,677.08	45.14	2,489,843.75	2,121.53

MIAMI-DADE COUNTY
REPORT WRITER
AS OF DATE: December 31, 2008
SORTING ORDER: FUND ICC#

INVSMT NUMBER	CUSIP NUMBER	FUND NUMBER	DESCRIPTION	PURCHASE SET DATE	MATURITY DATE	CALL DATE	INTEREST RATE	YTM TRADING	SCHEDULED PAR VALUE	CURRENT BOOK VALUE	PERIOD-END INTEREST ACRL	MARKET VALUE	UNREALIZED GAIN/LOSS
131851	31331GEN5	712	FFCB C I	11/17/2008	11/17/2009	2/17/2009	2.050%	2.050%	2,500,000	2,500,000.00	6,263.89	2,504,687.50	4,687.50
131938	3128X75D2	712	FHLMC C I	11/20/2008	11/20/2009	2/20/2009	2.250%	2.250%	3,000,000	3,000,000.00	7,687.50	3,005,625.00	5,625.00
132564	3128X8BP6	712	FHLMC C I	12/23/2008	12/23/2009	3/23/2009	1.200%	1.200%	6,000,000	6,000,000.00	1,600.00	6,001,875.00	1,875.00
132623	3128X8DH2	712	FHLMC C I	12/30/2008	12/30/2009	3/30/2009	1.000%	1.000%	1,000,000	1,000,000.00	27.78	998,750.00	(1,250.00)
132648	3128X8DH2	712	FHLMC C I	12/31/2008	12/30/2009	3/30/2009	1.000%	1.000%	2,500,000	2,500,069.44	69.44	2,496,875.00	(3,125.00)
130259	31331Y6H8	712	FFCB - BULLET	8/18/2008	2/18/2010		3.150%	3.150%	3,000,000	3,000,000.00	34,912.50	3,080,625.00	80,625.00
127271	31398APK2	712	FNMA BULLET	3/12/2008	3/5/2010		3.050%	3.050%	1,000,000	1,000,000.00	9,827.77	1,023,125.00	23,125.00
132336	31331GGS2	712	FFCB - BULLET	12/11/2008	6/11/2010		2.000%	2.000%	3,000,000	3,000,000.00	3,333.33	3,044,062.50	44,062.50
132607	3128X8CD2	712	FHLMC C I	12/30/2008	12/30/2010	3/30/2009	2.125%	2.125%	2,000,000	2,000,000.00	118.06	2,002,500.00	2,500.00
712 Total									113,785,700	113,434,094.42	378,129.02	114,037,772.12	379,958.71
131723	313385AF3	713	FHLB D N	11/7/2008	1/6/2009		0.550%	0.551%	3,611,600	3,608,289.37	3,034.74	3,611,594.98	270.87
132611	02581RN66	713	CP D AMERICAN EXPRESS COMPANY	12/30/2008	1/6/2009		0.020%	0.020%	270,000	269,998.95	0.30	269,979.00	(20.25)
131773	91411SN71	713	CP D UNIVERSITY OF CALIFORNIA	11/13/2008	1/7/2009		1.400%	1.403%	4,388,500	4,379,113.49	8,362.53	4,388,090.41	614.39
132081	313385AP1	713	FHLB D N	11/28/2008	1/14/2009		0.500%	0.500%	1,190,000	1,189,223.19	561.95	1,189,995.70	210.56
132286	313385AQ9	713	FHLB D N	12/9/2008	1/15/2009		0.200%	0.200%	2,500,000	2,499,486.11	319.45	2,499,990.28	184.72
131687	313385AR7	713	FHLB D N	11/6/2008	1/16/2009		0.750%	0.751%	538,000	537,204.21	627.67	537,997.76	165.88
131494	313589AW3	713	FNMA D N	10/24/2008	1/21/2009		2.220%	2.232%	6,000,000	5,967,070.00	25,530.00	5,999,966.67	7,366.67
132518	313397AY7	713	FHLMC D N	12/19/2008	1/23/2009		0.120%	0.120%	591,200	591,131.03	25.62	591,196.39	39.74
132650	313589BK8	713	FNMA D N	12/31/2008	2/3/2009		0.010%	0.010%	2,605,000	2,604,975.40	0.72	2,604,976.12	0.00
132083	313397BR1	713	FHLMC D N	11/28/2008	2/9/2009		0.650%	0.651%	1,811,500	1,809,112.34	1,112.06	1,811,480.38	1,255.98
131708	313589BR3	713	FNMA D N	11/6/2008	2/9/2009		1.000%	1.003%	604,000	602,406.11	939.56	603,993.46	647.79
131495	313397BS9	713	FHLMC D N	10/24/2008	2/10/2009		2.500%	2.519%	6,000,000	5,954,583.33	28,750.00	5,999,933.33	16,600.00
131690	313589CF8	713	FNMA D N	11/6/2008	2/23/2009		1.000%	1.003%	700,000	697,880.56	1,088.89	699,989.69	1,020.24
130759	313385CG9	713	FHLB D N	9/15/2008	2/24/2009		2.420%	2.447%	1,539,500	1,522,734.85	11,176.77	1,539,476.91	5,565.29
131689	313397CK5	713	FHLMC D N	11/6/2008	2/27/2009		1.050%	1.053%	308,000	306,984.88	503.07	307,995.12	507.17
132437	313385DE3	713	FHLB D N	12/17/2008	3/18/2009		0.260%	0.260%	1,000,000	999,342.78	108.33	999,957.78	506.67
132441	313397DZ1	713	FHLMC D N	12/17/2008	4/6/2009		0.300%	0.300%	1,000,000	999,083.33	125.00	999,788.89	580.56
132443	313397EP2	713	FHLMC D N	12/17/2008	4/20/2009		0.400%	0.401%	448,700	448,081.79	74.78	448,591.31	434.74
132446	313397FE6	713	FHLMC D N	12/17/2008	5/5/2009		0.400%	0.401%	909,200	907,795.79	151.53	908,824.20	876.88
132354	313589GJ6	713	FNMA D N	12/12/2008	6/2/2009		0.340%	0.341%	11,000	10,982.13	2.08	10,988.39	4.18
132268	313385LS3	713	FHLB D N	12/8/2008	9/14/2009		0.900%	0.906%	1,073,800	1,066,283.40	644.28	1,069,447.53	2,519.85
132340	313385LW4	713	FHLB D N	12/11/2008	9/18/2009		0.550%	0.552%	2,500,000	2,489,267.36	802.08	2,489,708.33	(361.11)
132644	313397MJ7	713	FHLMC D N	12/31/2008	9/30/2009		0.650%	0.653%	1,000,000	995,070.83	18.06	995,937.50	848.61
131852	31331GEN5	713	FFCB C I	11/17/2008	11/17/2009	2/17/2009	2.050%	2.050%	1,500,000	1,500,000.00	3,758.33	1,502,812.50	2,812.50
131939	3128X75D2	713	FHLMC C I	11/20/2008	11/20/2009	2/20/2009	2.250%	2.250%	1,000,000	1,000,000.00	2,562.50	1,001,875.00	1,875.00
132647	3128X8DH2	713	FHLMC C I	12/31/2008	12/30/2009	3/30/2009	1.000%	1.000%	1,720,000	1,720,047.78	47.78	1,717,850.00	(2,150.00)
713 Total									44,820,000	44,676,149.01	90,328.08	44,802,437.63	42,376.93
132542	86789AN58	714	CP D SUNSHINE STATE GOV FIN	12/23/2008	1/5/2009		0.300%	0.300%	3,746,700	3,746,294.11	281.00	3,746,466.87	(108.24)
131240	313385AF3	714	FHLB D N	10/6/2008	1/6/2009		2.200%	2.212%	424,000	421,616.18	2,254.26	423,999.41	128.97
132569	313385AF3	714	FHLB D N	12/26/2008	1/6/2009		0.050%	0.050%	6,500,000	6,499,900.69	54.17	6,499,990.97	36.11
132567	313589AG8	714	FNMA D N	12/26/2008	1/7/2009		0.030%	0.030%	4,000,000	3,999,960.00	20.00	3,999,993.33	13.33
132533	313385AM8	714	FHLB D N	12/22/2008	1/12/2009		0.080%	0.080%	1,000,000	999,953.33	22.22	999,996.94	21.39
132640	313385AM8	714	FHLB D N	12/31/2008	1/12/2009		0.050%	0.050%	805,000	804,986.58	1.12	804,997.54	9.84
132476	313385AN6	714	FHLB D N	12/17/2008	1/13/2009		0.040%	0.039%	10,000,000	9,999,711.11	160.49	9,999,966.67	95.07
132550	313385AN6	714	FHLB D N	12/23/2008	1/13/2009		0.060%	0.060%	3,085,000	3,084,892.03	46.27	3,084,989.72	51.42
132563	313397AN1	714	FHLMC D N	12/24/2008	1/13/2009		0.080%	0.080%	6,000,000	5,999,733.33	106.67	5,999,980.00	140.00
131242	313589AP8	714	FNMA D N	10/6/2008	1/14/2009		2.150%	2.163%	382,500	380,215.63	1,987.40	382,498.62	295.59
132642	313385AQ9	714	FHLB D N	12/31/2008	1/15/2009		0.050%	0.050%	940,000	939,980.42	1.31	939,996.34	14.61
132551	313397AV3	714	FHLMC D N	12/23/2008	1/20/2009		0.100%	0.100%	2,169,000	2,168,831.30	54.23	2,168,988.55	103.02
132497	313385AY2	714	FHLB D N	12/17/2008	1/23/2009		0.080%	0.078%	13,840,000	13,838,892.80	448.86	13,839,915.42	573.76
132498	313385AY2	714	FHLB D N	12/17/2008	1/23/2009		0.050%	0.049%	6,000,000	5,999,700.00	121.62	5,999,963.33	141.71
132519	313397AY7	714	FHLMC D N	12/19/2008	1/23/2009		0.120%	0.120%	288,100	288,066.39	12.48	288,098.24	19.37
132435	313385BU9	714	FHLB D N	12/17/2008	2/12/2009		0.200%	0.200%	10,000,000	9,996,833.33	833.33	9,999,883.33	2,216.67
132438	313385DE3	714	FHLB D N	12/17/2008	3/18/2009		0.260%	0.260%	1,000,000	999,342.78	108.33	999,957.78	506.67

MIAMI-DADE COUNTY
REPORT WRITER
AS OF DATE: December 31, 2008
SORTING ORDER: FUND ICC#

INVSMT NUMBER	CUSIP NUMBER	FUND NUMBER	DESCRIPTION	PURCHASE SET DATE	MATURITY DATE	CALL DATE	INTEREST RATE	YTM TRADING	SCHEDULED PAR VALUE	CURRENT BOOK VALUE	PERIOD-END INTEREST ACRL	MARKET VALUE	UNREALIZED GAIN/LOSS
714 Total									70,180,300	70,168,910.01	6,513.76	70,179,683.06	4,259.29
131400	313385DU7	740	FHLB D N	10/16/2008	4/1/2009		2.700%	2.734%	12,165,000	12,012,633.38	70,252.87	12,162,567.00	79,680.75
131940	313397DU2	740	FHLMC D N	11/20/2008	4/1/2009		1.400%	1.407%	13,253,000	13,184,967.93	21,646.57	13,250,349.40	43,734.90
131963	313589DU4	740	FNMA D N	11/20/2008	4/1/2009		1.400%	1.407%	50,000,000	49,743,333.33	81,666.67	49,990,000.00	165,000.00
131964	313589DU4	740	FNMA D N	11/20/2008	4/1/2009		1.400%	1.407%	250,000	248,716.67	408.33	249,950.00	825.00
131961	313385MK9	740	FHLB D N	11/20/2008	10/1/2009		1.980%	2.015%	50,000,000	49,133,750.00	115,500.00	49,781,250.00	532,000.00
131962	313385MK9	740	FHLB D N	11/20/2008	10/1/2009		1.980%	2.015%	880,000	864,754.00	2,032.80	876,150.00	9,363.20
740 Total									126,548,000	125,188,155.31	291,507.24	126,310,266.40	830,603.85
132608	64105GN67	741	CP D NESTLE CAPITAL CORP	12/30/2008	1/6/2009		0.010%	0.010%	7,835,000	7,834,984.77	4.35	7,834,390.61	(598.51)
130672	313385AV8	741	FHLB D N	9/10/2008	1/20/2009		2.350%	2.370%	809,000	802,029.12	5,967.50	808,995.73	999.11
130053	313385BB1	741	FHLB D N	8/5/2008	1/26/2009		2.650%	2.684%	128,000	126,360.53	1,403.91	127,999.11	234.67
130995	313385BE5	741	FHLB D N	9/25/2008	1/29/2009		3.100%	3.134%	5,593,000	5,532,315.95	47,198.71	5,592,956.50	13,441.84
131941	313397EG2	741	FHLMC D N	11/20/2008	4/13/2009		1.450%	1.458%	81,000	80,530.20	137.03	80,981.64	314.41
132552	313397EG2	741	FHLMC D N	12/23/2008	4/13/2009		0.320%	0.320%	90,000	89,911.20	7.20	89,979.60	61.20
129602	313385EP7	741	FHLB D N	7/11/2008	4/20/2009		2.600%	2.654%	15,000,000	14,693,416.67	188,500.00	14,996,366.67	114,450.00
129603	313385EP7	741	FHLB D N	7/11/2008	4/20/2009		2.600%	2.654%	928,000	909,032.71	11,661.87	927,775.22	7,080.64
129154	3133XRP46	741	FHLB - BULLET	6/24/2008	6/23/2009		3.000%	3.059%	6,000,000	5,998,281.49	4,000.00	6,075,000.00	76,718.51
129316	3133XRQ29	741	FHLB BULLET	6/30/2008	6/30/2009		3.000%	3.069%	10,000,000	9,996,657.70	833.33	10,128,125.00	131,467.30
132347	313385LW4	741	FHLB D N	12/12/2008	9/18/2009		0.550%	0.552%	402,000	400,280.33	122.83	400,345.10	(58.06)
132609	3128X8DH2	741	FHLMC C I	12/30/2008	12/30/2009	3/30/2009	1.000%	1.000%	1,460,000	1,460,000.00	40.56	1,458,175.00	(1,825.00)
127229	31398APK2	741	FNMA C I	3/11/2008	3/5/2010	3/5/2010	3.050%	3.050%	2,130,000	2,130,000.00	20,933.17	2,179,256.25	49,256.25
132346	31331GGS2	741	FFCB - BULLET	12/12/2008	6/11/2010		2.000%	2.000%	6,000,000	6,000,333.33	6,666.66	6,088,125.00	88,125.00
130753	31331GBH1	741	FFCB C I	9/15/2008	9/15/2010	1/2/2009	3.370%	3.370%	5,000,000	5,000,000.00	49,613.89	5,000,000.00	0.00
130968	3133XS6V5	741	FHLB C I	9/24/2008	9/24/2010	9/24/2009	3.300%	3.300%	5,000,000	5,000,000.00	44,458.33	5,082,812.50	82,812.50
130994	3133XSAH1	741	FHLB C I	9/25/2008	9/24/2010	3/24/2009	3.250%	3.250%	12,000,000	12,001,083.33	105,083.33	12,071,250.00	71,250.00
126662	3133XPHW7	741	FHLB C I	2/6/2008	11/4/2010	2/4/2009	3.375%	3.375%	2,200,000	2,200,000.00	30,318.75	2,205,500.00	5,500.00
126672	3133XPHW7	741	FHLB C I	2/7/2008	11/4/2010	2/4/2009	3.375%	3.375%	5,300,000	5,300,000.00	73,040.64	5,313,250.00	13,250.00
129490	3136F9XV0	741	FNMA C I	7/7/2008	1/7/2011	1/7/2009	4.200%	4.200%	10,000,000	10,000,000.00	203,000.00	10,006,250.00	6,250.00
132553	3133XSPS1	741	FHLB C I	12/23/2008	12/23/2011	9/23/2009	3.000%	3.000%	10,000,000	10,000,000.00	6,666.67	10,037,500.00	37,500.00
741 Total									105,956,000	105,555,217.33	799,658.73	106,505,033.93	696,229.86
132434	313397KN0	742	FHLMC D N	12/16/2008	8/17/2009		0.700%	0.703%	51,000	50,758.03	15.87	50,886.95	113.05
742 Total									51,000	50,758.03	15.87	50,886.95	113.05
131470	1313589A3	756	FNMA D N	10/22/2008	1/5/2009		2.060%	2.069%	114,000	113,510.75	463.16	113,999.87	25.96
756 Total									114,000	113,510.75	463.16	113,999.87	25.96
131275	313385AE6	760	FHLB D N	10/7/2008	1/5/2009		2.050%	2.061%	32,200	32,034.98	157.69	32,199.96	7.29
131463	313589AE3	760	FNMA D N	10/22/2008	1/5/2009		2.060%	2.069%	500	497.85	2.03	500.00	0.12
132612	02581RN66	760	CP D AMERICAN EXPRESS COMPANY	12/30/2008	1/6/2009		0.020%	0.020%	2,000,000	1,999,992.22	2.22	1,999,844.44	(150.00)
130045	313385AG1	760	FHLB D N	8/4/2008	1/7/2009		2.630%	2.660%	18,000	17,794.86	197.25	17,999.97	7.86
132568	313589AG8	760	FNMA D N	12/26/2008	1/7/2009		0.030%	0.030%	2,000,000	1,999,980.00	10.00	1,999,996.67	6.67
132570	313385AJ5	760	FHLB D N	12/26/2008	1/9/2009		0.070%	0.070%	5,500,000	5,499,850.28	64.17	5,499,987.78	73.33
131243	313589AP8	760	FNMA D N	10/6/2008	1/14/2009		2.150%	2.163%	74,500	74,055.07	387.09	74,499.73	57.57
132520	313397AY7	760	FHLMC D N	12/19/2008	1/23/2009		0.120%	0.120%	73,600	73,591.41	3.19	73,599.55	4.95
132651	313589BK8	760	FNMA D N	12/31/2008	2/3/2009		0.010%	0.010%	95,000	94,999.10	0.03	94,999.13	0.00
131656	313385FD3	760	FHLB D N	11/5/2008	5/4/2009		1.900%	1.918%	2,000,000	1,981,000.00	6,016.67	1,999,180.00	12,163.33
132447	313397FE6	760	FHLMC D N	12/17/2008	5/5/2009		0.400%	0.401%	12,000	11,981.47	2.00	11,995.04	11.57
132355	313589GJ6	760	FNMA D N	12/12/2008	6/2/2009		0.340%	0.341%	2,341,000	2,337,197.18	442.19	2,338,528.94	889.57
128885	3133XRHF0	760	FHLB - BULLET	6/10/2008	6/10/2009		2.730%	2.730%	2,000,000	2,000,000.00	3,185.00	2,020,625.00	20,625.00
129155	3133XRP46	760	FHLB - BULLET	6/24/2008	6/23/2009		3.000%	3.059%	5,000,000	4,998,567.91	3,333.33	5,062,500.00	63,932.09
129201	3133XRNB2	760	FHLB - BULLET	6/25/2008	6/25/2009		3.150%	3.150%	5,000,000	5,000,000.00	2,625.00	5,067,187.50	67,187.50
132442	313397HN4	760	FHLMC D N	12/17/2008	6/30/2009		0.520%	0.521%	3,200,000	3,190,986.67	693.33	3,194,400.00	2,720.00
129315	3133XRQ29	760	FHLB BULLET	6/30/2008	6/30/2009		3.000%	3.069%	5,000,000	4,998,328.85	416.67	5,064,062.50	65,733.65
132620	3136F9Z48	760	FNMA STEP UP	12/30/2008	6/30/2009	3/30/2009	2.125%	2.125%	2,000,000	2,000,000.00	118.06	2,001,250.00	1,250.00
132645	313397MJ7	760	FHLMC D N	12/31/2008	9/30/2009		0.650%	0.653%	500,000	497,535.42	9.03	497,968.75	424.30
127744	3133XQN65	760	FHLB BULLET	4/7/2008	10/7/2009		2.600%	2.603%	5,000,000	4,999,833.94	30,333.33	5,076,562.50	76,728.56

MIAMI-DADE COUNTY
REPORT WRITER
AS OF DATE: December 31, 2008
SORTING ORDER: FUND ICC#

INVSMT NUMBER	CUSIP NUMBER	FUND NUMBER	DESCRIPTION	PURCHASE SET DATE	MATURITY DATE	CALL DATE	INTEREST RATE	YTM TRADING	SCHEDULED PAR VALUE	CURRENT BOOK VALUE	PERIOD-END INTEREST ACCRL	MARKET VALUE	UNREALIZED GAIN/LOSS
132624	3128X8DH2	760	FHLMC C I	12/30/2008	12/30/2009	3/30/2009	1.000%	1.000%	1,000,000	1,000,000.00	27.78	998,750.00	(1,250.00)
130260	31331Y6H8	760	FFCB - BULLET	8/18/2008	2/18/2010		3.150%	3.150%	2,000,000	2,000,000.00	23,275.00	2,053,750.00	53,750.00
127212	31398APK2	760	FNMA BULLET	3/10/2008	3/5/2010		3.050%	3.050%	6,000,000	6,000,000.00	58,966.67	6,138,750.00	138,750.00
127272	31398APK2	760	FNMA BULLET	3/12/2008	3/5/2010		3.050%	3.050%	9,000,000	9,000,000.00	88,450.00	9,208,125.00	208,125.00
129484	31331Y2P4	760	FFCB - BULLET	7/7/2008	7/7/2010		3.300%	3.300%	4,000,000	4,000,000.00	63,800.00	4,143,750.00	143,750.00
129897	31331Y4G2	760	FFCB C I	7/28/2008	7/28/2010	7/28/2009	3.300%	3.300%	5,000,000	5,000,000.00	70,125.00	5,076,562.50	76,562.50
131340	3136F9K77	760	FNMA C I	10/10/2008	10/8/2010	1/8/2009	4.000%	4.012%	3,000,000	2,999,976.67	27,666.67	3,000,937.50	1,627.50
126482	3128X6J72	760	FHLMC C I	1/29/2008	1/28/2011	1/28/2011	3.600%	3.600%	5,000,000	5,000,000.00	76,500.00	5,009,375.00	9,375.00
		760 Total							76,846,800	76,808,203.88	456,809.40	77,757,887.46	942,363.36
132521	313397AY7	778	FHLMC D N	12/19/2008	1/23/2009		0.120%	0.120%	1,029,700	1,029,579.87	44.62	1,029,693.71	69.22
132475	313385BJ4	778	FHLB D N	12/17/2008	2/2/2009		0.550%	0.539%	125,000	124,912.15	28.04	124,998.89	58.70
132439	313385DE3	778	FHLB D N	12/17/2008	3/18/2009		0.260%	0.260%	600,000	599,605.67	65.00	599,974.67	304.00
		778 Total							1,754,700	1,754,097.69	137.66	1,754,667.27	431.92
131276	313385AE6	779	FHLB D N	10/7/2008	1/5/2009		2.050%	2.061%	340,000	338,257.50	1,665.06	339,999.62	77.06
131471	1313589A3	779	FNMA D N	10/22/2008	1/5/2009		2.060%	2.069%	2,532,000	2,521,133.50	10,286.95	2,531,997.19	576.74
131724	313385AF3	779	FHLB D N	11/7/2008	1/6/2009		0.550%	0.551%	1,851,400	1,849,702.88	1,555.69	1,851,397.43	138.86
132613	02581RN66	779	CP D AMERICAN EXPRESS COMPANY	12/30/2008	1/6/2009		0.020%	0.020%	1,000,000	999,996.11	1.11	999,922.22	(75.00)
131774	91411SN71	779	CP D UNIVERSITY OF CALIFORNIA	11/13/2008	1/7/2009		1.400%	1.403%	603,200	601,909.82	1,149.43	603,143.70	84.45
131721	313385AM8	779	FHLB D N	11/7/2008	1/12/2009		1.000%	1.002%	485,000	484,110.83	740.98	484,998.52	146.71
132302	313385AM8	779	FHLB D N	12/10/2008	1/12/2009		0.170%	0.170%	710,000	709,889.36	73.76	709,997.83	34.71
132522	313397AY7	779	FHLMC D N	12/19/2008	1/23/2009		0.120%	0.120%	1,698,000	1,697,801.90	73.58	1,697,989.62	114.14
131720	313589BR3	779	FNMA D N	11/7/2008	2/9/2009		1.050%	1.053%	305,000	304,163.79	489.27	304,996.70	343.64
131691	313589CF8	779	FNMA D N	11/6/2008	2/23/2009		1.000%	1.003%	2,570,000	2,562,218.61	3,997.78	2,569,962.16	3,745.77
130755	313385CG9	779	FHLB D N	9/15/2008	2/24/2009		2.420%	2.447%	6,460,500	6,390,145.16	46,903.23	6,460,403.09	23,354.70
131686	313397CN9	779	FHLMC D N	11/6/2008	3/2/2009		1.080%	1.084%	3,063,300	3,052,639.72	5,146.34	3,063,197.89	5,411.83
132348	313385EP7	779	FHLB D N	12/12/2008	4/20/2009		0.250%	0.250%	725,000	724,350.52	100.69	724,824.39	373.18
132444	313397EP2	779	FHLB D N	12/17/2008	4/20/2009		0.400%	0.401%	151,300	151,091.54	25.22	151,263.35	146.59
132356	313589GJ6	779	FNMA D N	12/12/2008	6/2/2009		0.340%	0.341%	2,310,000	2,306,247.53	436.33	2,307,561.67	877.81
132621	3136F9Z48	779	FNMA STEP UP	12/30/2008	6/30/2009	3/30/2009	2.125%	2.125%	2,000,000	2,000,000.00	118.06	2,001,250.00	1,250.00
132646	313397MJ7	779	FHLMC D N	12/31/2008	9/30/2009		0.650%	0.653%	1,000,000	995,070.83	18.06	995,937.50	848.61
131960	3128X75D2	779	FHLMC C I	11/20/2008	11/20/2009	2/20/2009	2.250%	2.286%	1,500,000	1,499,475.00	3,843.75	1,502,812.50	3,337.50
131339	3136F9K77	779	FNMA C I	10/10/2008	10/8/2010	1/8/2009	4.000%	4.012%	2,000,000	1,999,984.44	18,444.44	2,000,625.00	1,085.00
		779 Total							31,304,700	31,188,189.04	95,069.73	31,302,280.38	41,872.30
131472	1313589A3	1010	FNMA D N	10/22/2008	1/5/2009		2.060%	2.069%	84,900	84,535.64	344.93	84,899.91	19.34
		1010 Total							84,900	84,535.64	344.93	84,899.91	19.34
132724	316175108	1022	MONEY MKT - DCAD	12/1/2008	1/1/2009		1.174%	1.174%	122,512	122,512.34	123.88	122,512.34	0.00
		1022 Total							122,512	122,512.34	123.88	122,512.34	0.00
130877	313385DF0	1024	FHLB D N	9/18/2008	3/19/2009		2.600%	2.635%	2,641,500	2,606,778.95	20,031.38	2,641,387.00	14,576.67
131196	313385DS2	1024	FHLB D N	10/1/2008	3/30/2009		3.200%	3.252%	20,944,400	20,609,289.60	171,278.65	20,943,376.05	162,807.80
		1024 Total							23,585,900	23,216,068.55	191,310.03	23,584,763.05	177,384.47
130878	313385DF0	1027	FHLB D N	9/18/2008	3/19/2009		2.600%	2.635%	458,500	452,473.27	3,476.96	458,480.39	2,530.16
131197	313385DS2	1027	FHLB D N	10/1/2008	3/30/2009		3.200%	3.252%	7,969,600	7,842,086.40	65,173.62	7,969,210.38	61,950.36
		1027 Total							8,428,100	8,294,559.67	68,650.58	8,427,690.77	64,480.52
132512	313385AF3	1029	FHLB D N	12/19/2008	1/6/2009		0.050%	0.050%	7,780,000	7,779,805.50	140.47	7,779,989.19	43.22
132614	02581RN66	1029	CP D AMERICAN EXPRESS COMPANY	12/30/2008	1/6/2009		0.020%	0.020%	5,000,000	4,999,980.56	5.55	4,999,611.11	(375.00)
132513	313385AG1	1029	FHLB D N	12/19/2008	1/7/2009		0.050%	0.050%	24,000,000	23,999,366.67	433.33	23,999,960.00	160.00
132514	313385AH9	1029	FHLB D N	12/19/2008	1/8/2009		0.050%	0.050%	6,000,000	5,999,833.33	108.34	5,999,988.33	46.66
132558	313385AM8	1029	FHLB D N	12/24/2008	1/12/2009		0.030%	0.030%	9,500,000	9,499,849.58	63.33	9,499,970.97	58.06
132560	313385AM8	1029	FHLB D N	12/24/2008	1/12/2009		0.050%	0.050%	11,184,000	11,183,704.87	124.27	11,183,965.83	136.69
132559	313385AN6	1029	FHLB D N	12/24/2008	1/13/2009		0.050%	0.050%	1,000,000	999,972.22	11.11	999,996.67	13.34
132516	313385AP1	1029	FHLB D N	12/19/2008	1/14/2009		0.050%	0.050%	7,000,000	6,999,747.22	126.39	6,999,974.72	101.11
132561	313385AQ9	1029	FHLB D N	12/24/2008	1/15/2009		0.040%	0.040%	4,000,000	3,999,902.22	35.56	3,999,984.44	46.66
132515	313385AW6	1029	FHLB D N	12/19/2008	1/21/2009		0.080%	0.080%	13,160,000	13,159,034.93	380.18	13,159,926.89	511.78
132524	313385AX4	1029	FHLB D N	12/19/2008	1/22/2009		0.150%	0.150%	2,000,000	1,999,716.67	108.33	1,999,988.33	163.33

MIAMI-DADE COUNTY
REPORT WRITER
AS OF DATE: December 31, 2008
SORTING ORDER: FUND ICC#

INVSMT NUMBER	CUSIP NUMBER	FUND NUMBER	DESCRIPTION	PURCHASE SET DATE	MATURITY DATE	CALL DATE	INTEREST RATE	YTM TRADING	SCHEDULED PAR VALUE	CURRENT BOOK VALUE	PERIOD-END INTEREST ACCRL	MARKET VALUE	UNREALIZED GAIN/LOSS
132523	313397AY7	1029	FHLMC D N	12/19/2008	1/23/2009		0.120%	0.120%	4,992,900	4,992,317.50	216.36	4,992,869.49	335.63
132649	313385EP7	1029	FHLB D N	12/31/2008	4/20/2009		0.100%	0.100%	15,000,000	14,995,416.67	41.67	14,996,366.67	908.33
		1029 Total							110,616,900	110,608,647.94	1,794.89	110,612,592.64	2,149.81
132562	313397AG6	1030	FHLMC D N	12/24/2008	1/7/2009		0.092%	0.063%	3,013,000	3,012,926.35	42.09	3,012,994.98	26.54
132571	313589AG8	1030	FNMA D N	12/26/2008	1/7/2009		0.030%	0.030%	1,000,000	999,990.00	5.00	999,998.33	3.33
		1030 Total							4,013,000	4,012,916.35	47.09	4,012,993.31	29.87
Grand Total									4,206,569,015	4,183,156,903.73	19,852,993.90	4,213,625,247.97	20,263,057.57