



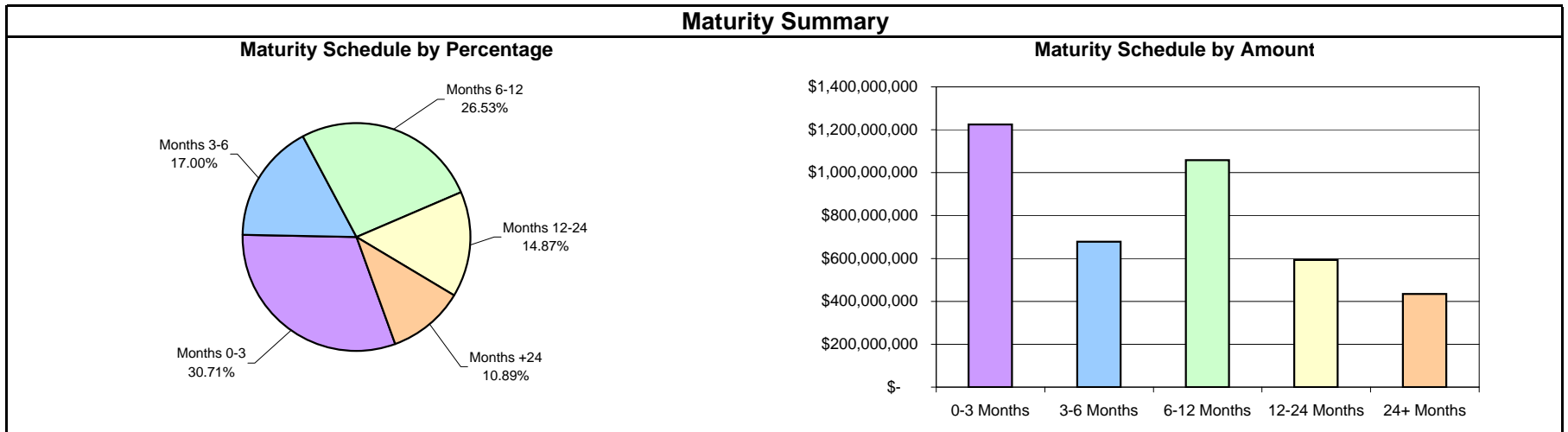
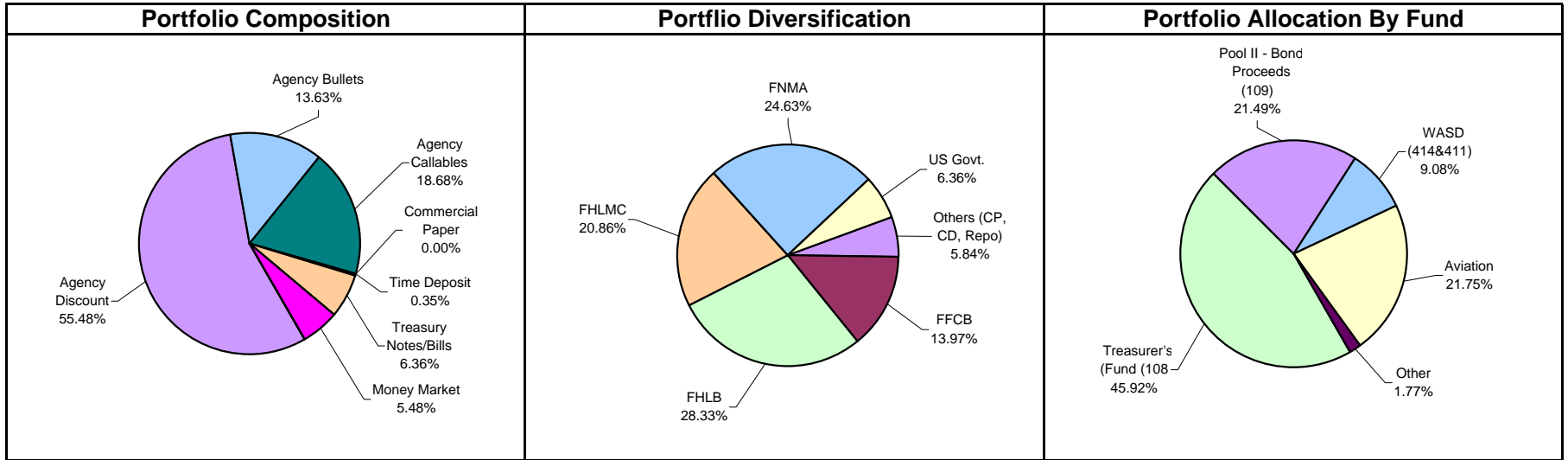
**Monthly Summary Investment Report**

**For the Period Ended**

**March 31, 2009**

 **First Southwest Asset Management**

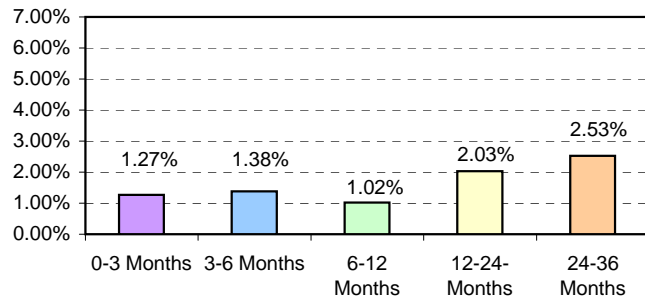
## Miami-Dade County Total Portfolio Summary March 31, 2009



**Miami-Dade County  
Summary Statement  
March 31, 2009**

Portfolio Summary					
	Current 3/31/2009	Previous Month 2/28/2009	Change from Prior Month	Prior Quarter 12/31/2008	Change from Prior Quarter
Par Value	\$ 4,007,467,919.66	\$ 3,820,287,255.41	\$ 187,180,664.25	\$ 4,206,569,015.09	\$ (199,101,095.43)
Book Value	\$ 3,999,192,384.56	\$ 3,810,872,684.42	\$ 188,319,700.14	\$ 4,193,362,190.38	\$ (194,169,805.82)
Market Value	\$ 4,000,465,577.91	\$ 3,808,313,279.90	\$ 192,152,298.01	\$ 4,213,625,247.97	\$ (213,159,670.06)
Market Value as a % of Book Value	100.03%	99.93%	0.10%	100.48%	-0.45%
Accrued Interest	\$ 17,791,824.08	\$ 18,198,061.52	\$ (406,237.44)	\$ 19,852,993.90	\$ (2,061,169.82)
Total Value (Market Value+ Accrued Interest)	\$ 4,018,257,401.99	\$ 3,826,511,341.42	\$ 191,746,060.57	\$ 4,233,478,241.87	\$ (215,220,839.88)
Interest Earned (Current Month)	\$ 5,020,864.21	\$ 5,085,843.51	\$ (64,979.30)	\$ 7,438,550.90	\$ (2,417,686.69)
Interest Earned Fiscal YTD (10/1 - 9/30)	\$ 38,831,631.30	\$ 33,806,967.51	\$ 5,024,663.79	\$ 22,639,950.22	\$ 16,191,681.08
Unrealized Gain (Loss)	\$ 1,273,193.35	\$ (2,559,404.52)	\$ 3,832,597.87	\$ 20,263,057.59	\$ (18,989,864.24)
Weighted Average Maturity	294.43	255.73	38.7	213.76	80.67
Yield to Maturity	1.47%	1.63%	-0.16%	1.95%	-0.48%
Earned Income Yield for Period	1.59%	1.72%	-0.13%	1.86%	-0.27%
Earned Income Yield for Year to Date	2.00%	2.08%	-0.08%	2.32%	-0.33%

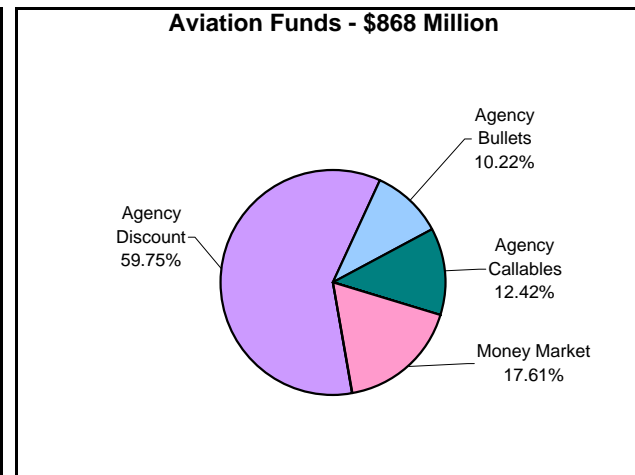
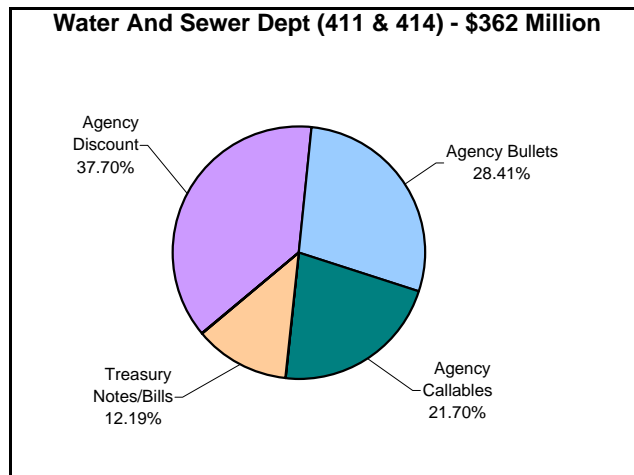
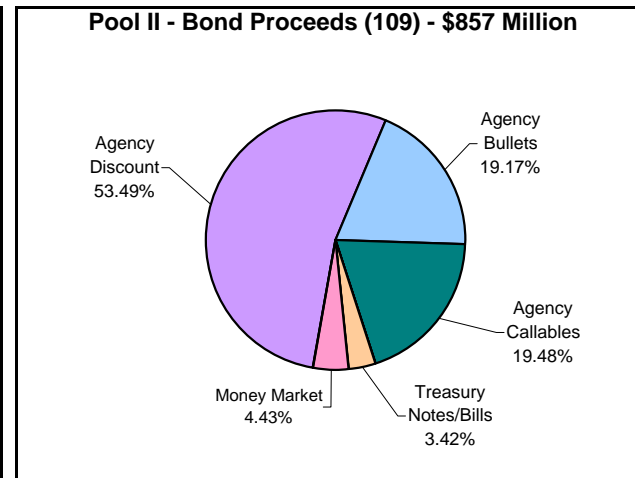
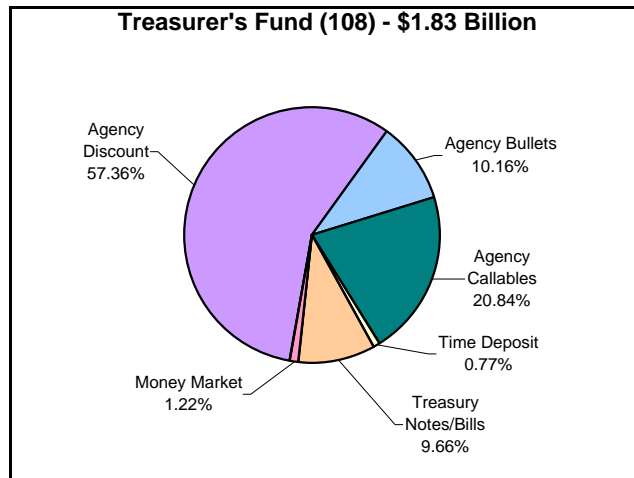
**Yield Maturity Breakdown**



**Policy Compliance**

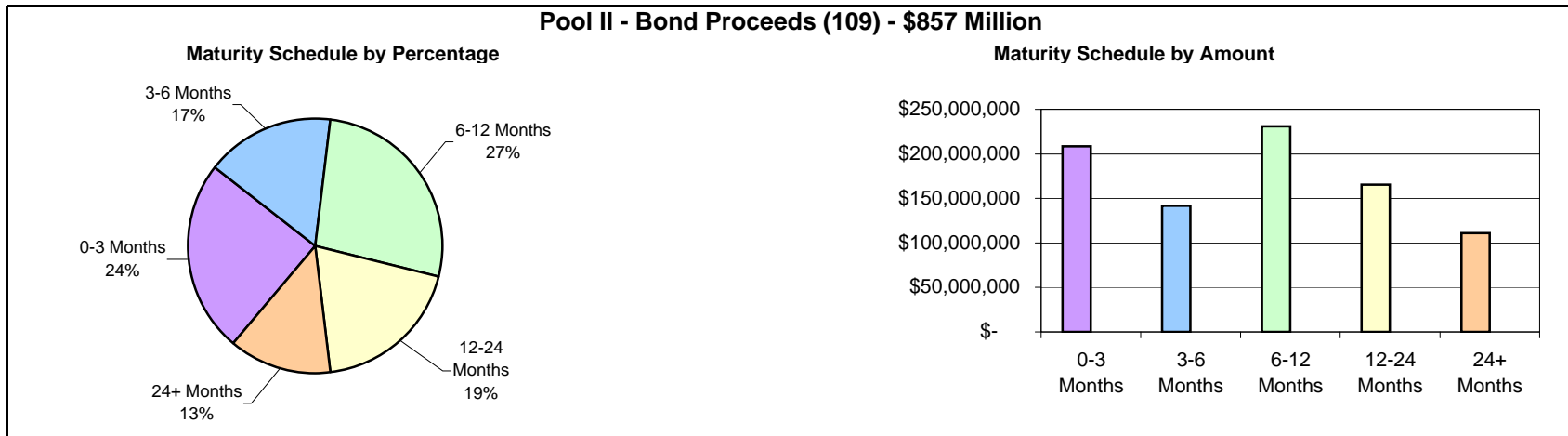
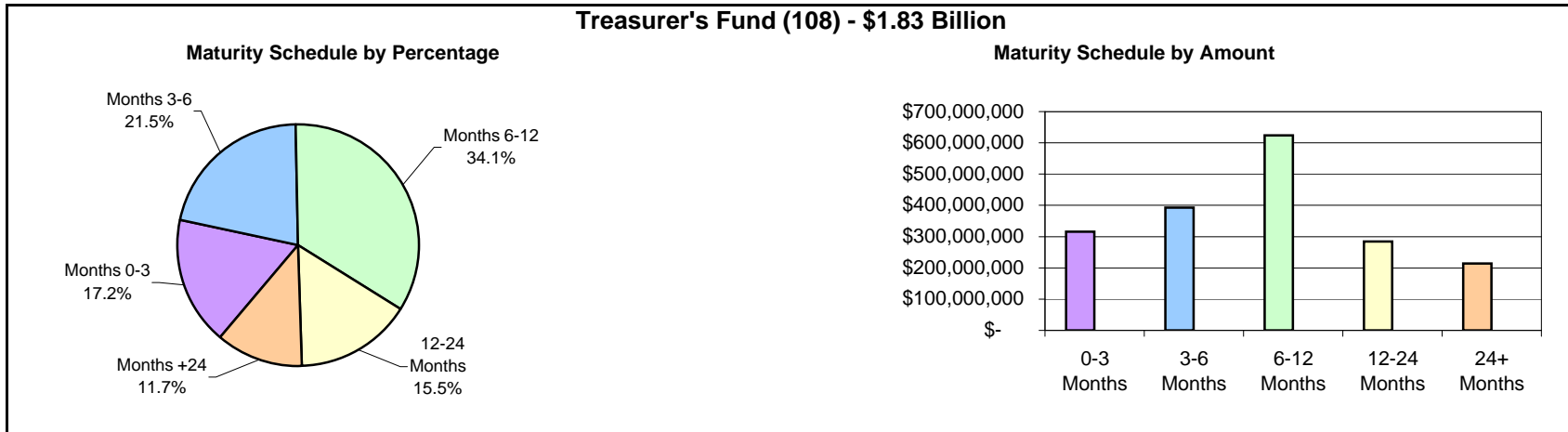
Security Type	% Limit	Current %	Result
Treasuries	100%	6.36%	PASS
Agencies	75%	69.12%	PASS
Agency Callables	25%	18.68%	PASS
Commercial Paper	50%	0.00%	PASS
-CP Single Issuer Max	5%	0.00%	PASS
Banker's Acceptance	25%	0.00%	PASS
Time Deposits	20%	0.35%	PASS
SBA/Investment Pools	50%	0.00%	PASS
Money Market Funds	30%	5.48%	PASS
Repurchase Agreement	20%	0.01%	PASS
Open/Closed End Funds	5%	0.00%	PASS

### Miami-Dade County Portfolio Composition March 31, 2009

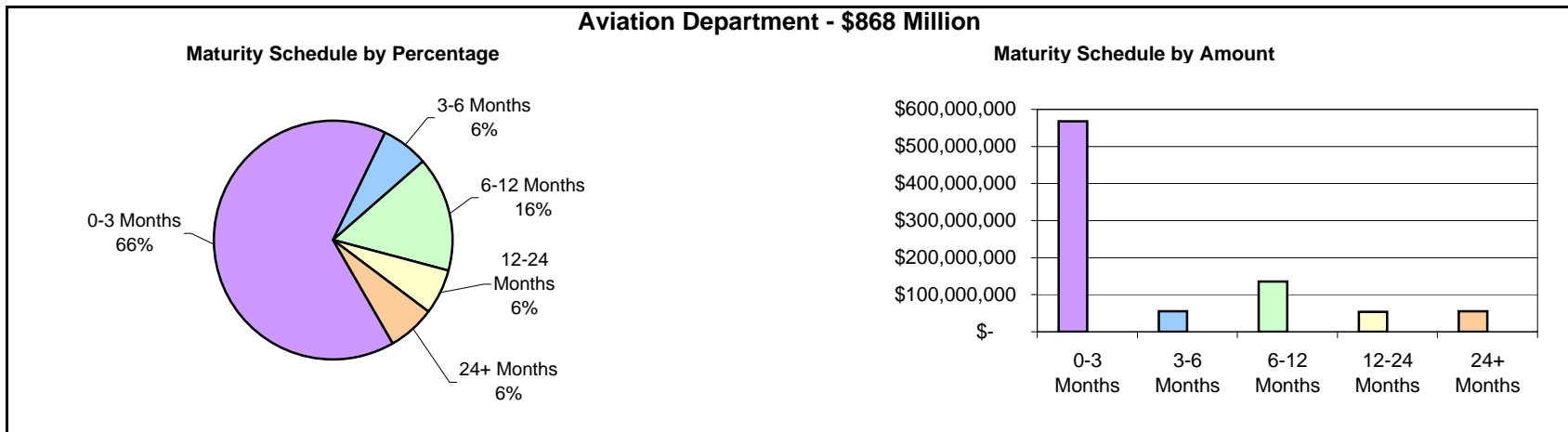
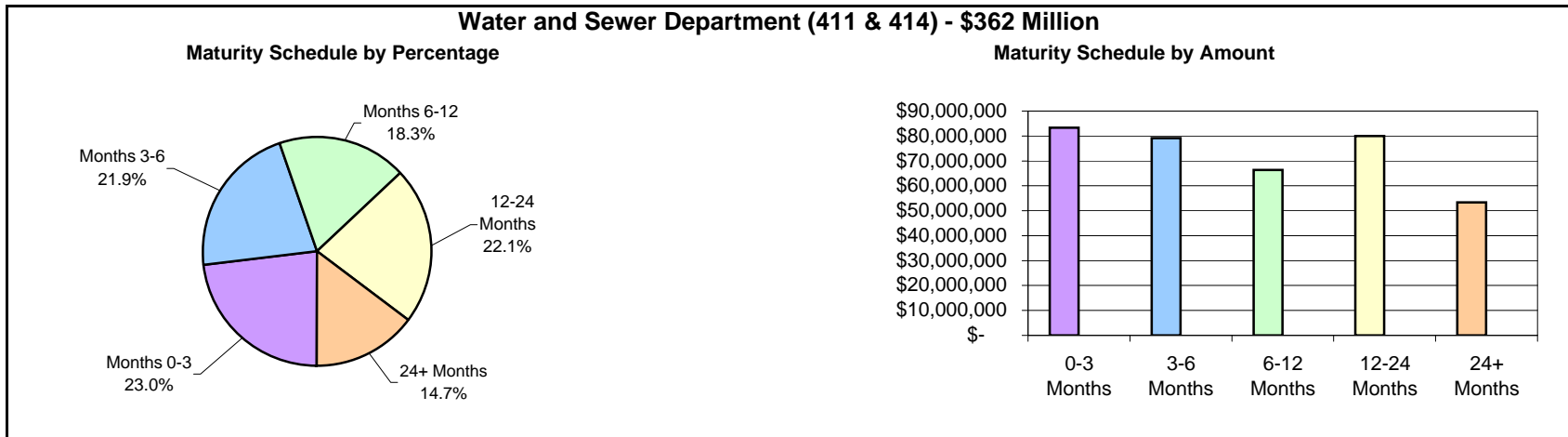


Note: Graphs above do not include miscellaneous funds totaling \$71 million and representing 1.8% of the portfolio.

## Miami-Dade County Maturity Breakdown March 31, 2009

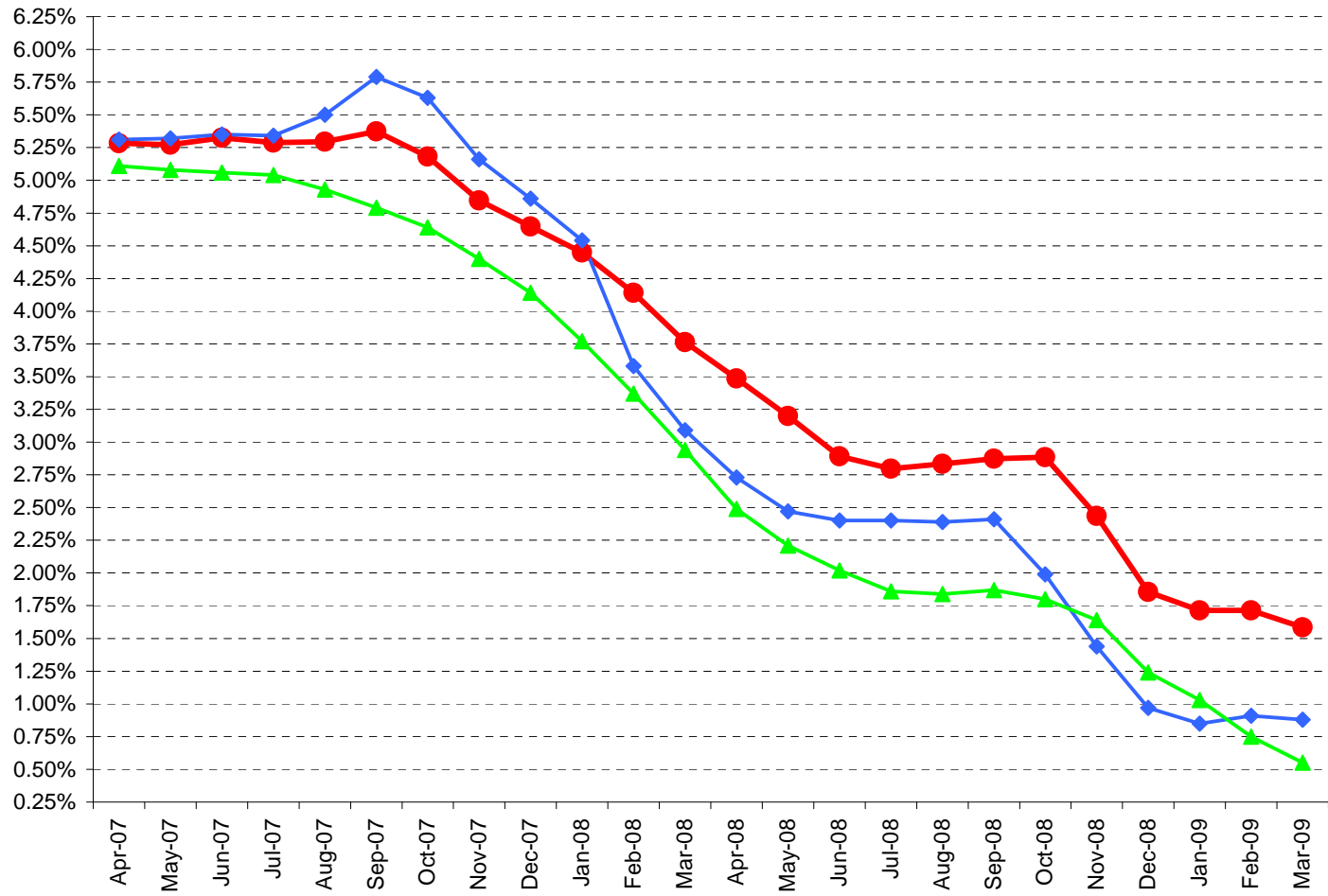


## Miami-Dade County Maturity Breakdown March 31, 2009



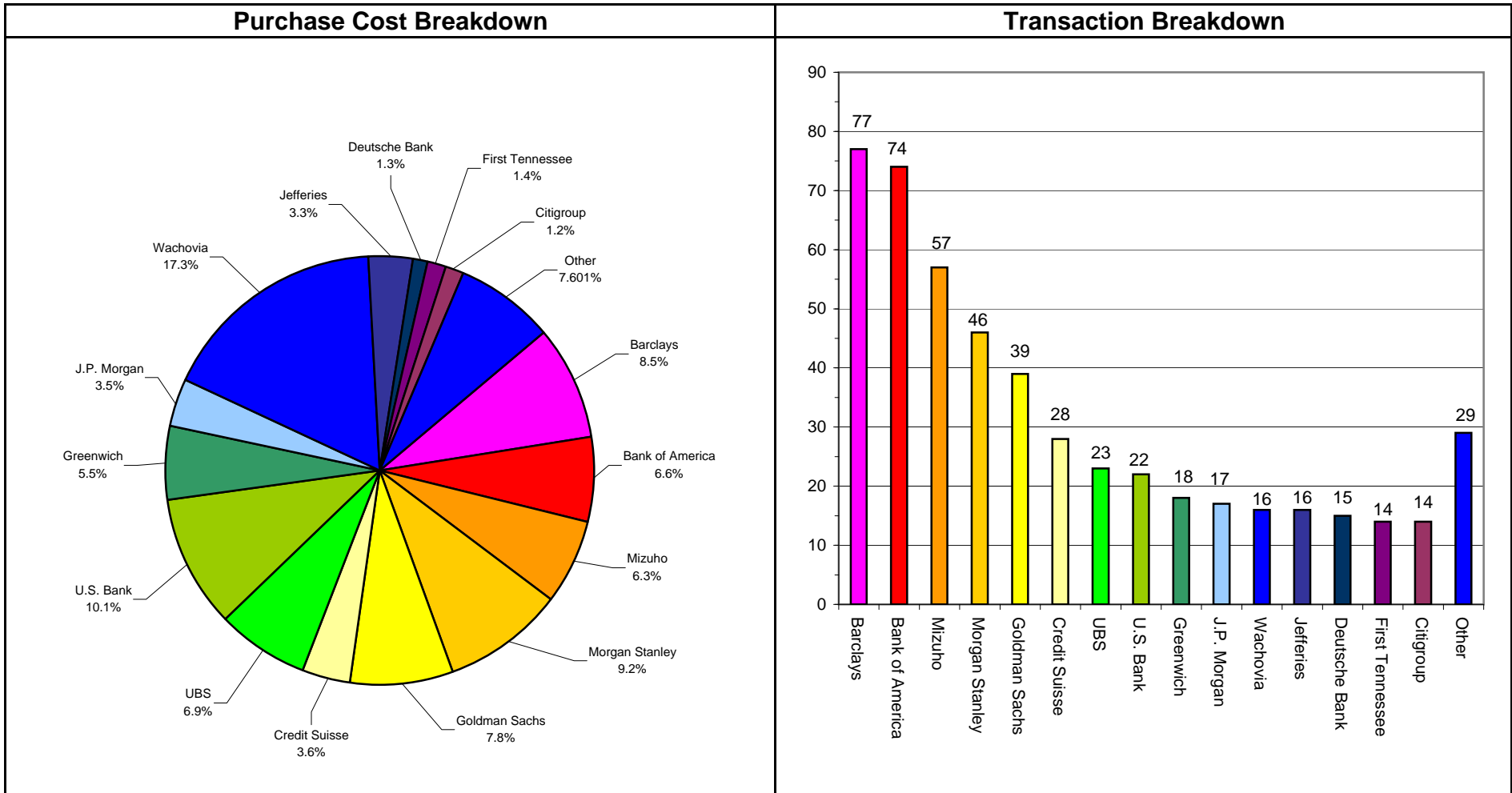
Note: Graphs above do not include miscellaneous funds totaling \$71 million and representing 1.8% of the portfolio.

### Miami-Dade County Benchmark Comparisons March 31, 2009



	Apr-07	May-07	Jun-07	Jul-07	Aug-07	Sep-07	Oct-07	Nov-07	Dec-07	Jan-08	Feb-08	Mar-08	Apr-08	May-08	Jun-08	Jul-08	Aug-08	Sep-08	Oct-08	Nov-08	Dec-08	Jan-09	Feb-09	Mar-09
<span style="color: red;">●</span> Miami-Dade - Earned Income Yield	5.28%	5.27%	5.33%	5.29%	5.29%	5.37%	5.18%	4.85%	4.65%	4.45%	4.14%	3.76%	3.49%	3.20%	2.89%	2.80%	2.83%	2.87%	2.89%	2.44%	1.86%	1.72%	1.72%	1.59%
<span style="color: blue;">◆</span> Monthly Avg - Florida SBA Pool	5.31%	5.32%	5.35%	5.34%	5.50%	5.79%	5.63%	5.16%	4.86%	4.54%	3.58%	3.09%	2.73%	2.47%	2.40%	2.40%	2.39%	2.41%	1.99%	1.44%	0.97%	0.85%	0.91%	0.88%
<span style="color: green;">▲</span> 6-Month Avg of 180-day T-Bill	5.11%	5.08%	5.06%	5.04%	4.93%	4.79%	4.64%	4.40%	4.14%	3.77%	3.37%	2.94%	2.49%	2.21%	2.02%	1.86%	1.84%	1.87%	1.80%	1.64%	1.24%	1.03%	0.75%	0.55%

### Miami-Dade County Broker Purchase Distribution March 31, 2009





**Detail Security Holdings Report**

**For the Period Ended**

**March 31, 2009**

## MIAMI-DADE COUNTY

## REPORT WRITER

AS OF DATE: March 31, 2009

SORTING ORDER: FUND ICC#

INVSMT NUMBER	CUSIP NUMBER	FUND NUMBER	DESCRIPTION	PURCHASE SET DATE	MATURITY DATE	CALL DATE	INTEREST RATE	YTM TRADING	SCHEDULED PAR VALUE	CURRENT BOOK VALUE	PERIOD-END INTEREST ACCRL	MARKET VALUE	UNREALIZED GAIN/LOSS
133131	313385EG7	40	FHLB D N	1/30/2009	4/13/2009		0.360%	0.360%	1,275,000	1,274,069.25	777.75	1,274,320.00	(527.00)
131670	313385FD3	40	FHLB D N	11/5/2008	5/4/2009		1.900%	1.918%	545,000	539,822.50	4,228.29	544,200.67	149.88
133907	313385GY6	40	FHLB D N	3/18/2009	6/16/2009		0.300%	0.300%	575,000	574,568.75	67.08	572,693.61	(1,942.22)
133908	313589HP1	40	FNMA D N	3/18/2009	7/1/2009		0.450%	0.451%	500,000	499,343.75	87.50	497,472.22	(1,959.03)
133318	313385JT4	40	FHLB D N	2/11/2009	7/29/2009		0.600%	0.602%	275,000	274,230.00	224.58	273,181.94	(1,272.64)
		<b>40 Total</b>							<b>3,170,000</b>	<b>3,162,034.25</b>	<b>5,385.20</b>	<b>3,161,868.44</b>	<b>(5,551.01)</b>
134216	GOVTMMKT7	108	GOVERNMENT MONEY MAR	3/1/2009	4/1/2009		0.259%	0.259%	22,344,056	22,344,055.71	4,979.47	22,344,055.71	0.00
134219	GOVTMMKT7	108	GOVERNMENT MONEY MAR	3/1/2009	4/1/2009		0.259%	0.259%	36,927	36,927.41	8.23	36,927.41	0.00
131413	313385DU7	108	FHLB D N	10/16/2008	4/1/2009		3.050%	3.094%	1,517,000	1,495,536.56	21,463.44	1,517,000.00	0.00
131828	313589DU4	108	FNMA D N	11/13/2008	4/1/2009		1.270%	1.276%	2,719,000	2,705,667.08	13,332.92	2,719,000.00	0.00
131927	313397DV0	108	FHLMC D N	11/20/2008	4/2/2009		1.200%	1.205%	30,000,000	29,867,000.00	132,000.00	29,998,666.67	(333.33)
131429	313385EG7	108	FHLB D N	10/17/2008	4/13/2009		3.100%	3.148%	1,854,000	1,825,582.30	26,501.90	1,853,011.20	927.00
122139	31331XVG4	108	FFCB BULLET	5/25/2007	4/13/2009		4.875%	5.080%	25,000,000	24,975,700.29	568,750.00	25,039,062.50	63,362.21
130462	313385EH5	108	FHLB D N	8/29/2008	4/14/2009		2.850%	2.902%	7,463,000	7,328,292.85	127,026.48	7,458,688.04	3,368.71
132092	313385EH5	108	FHLB D N	11/28/2008	4/14/2009		0.950%	0.953%	2,280,000	2,271,757.17	7,460.66	2,278,682.67	(535.16)
132088	313385EK8	108	FHLB D N	11/28/2008	4/16/2009		0.930%	0.933%	3,300,000	3,288,150.25	10,571.00	3,297,800.00	(921.25)
131762	313385EP7	108	FHLB D N	11/13/2008	4/20/2009		1.300%	1.307%	9,400,000	9,346,367.78	47,182.78	9,392,062.22	(1,488.34)
131518	313385ET9	108	FHLB D N	10/24/2008	4/24/2009		3.000%	3.046%	1,892,000	1,863,304.67	25,069.00	1,890,065.96	1,692.29
131711	313385ET9	108	FHLB D N	10/24/2008	4/24/2009		3.000%	3.360%	4,500,000	4,431,750.00	59,625.00	4,495,400.00	4,025.00
132089	313385ET9	108	FHLB D N	11/28/2008	4/24/2009		0.900%	0.903%	3,586,000	3,572,821.45	11,116.60	3,582,334.31	(1,603.74)
132093	313385EY8	108	FHLB D N	11/28/2008	4/29/2009		0.950%	0.954%	1,420,000	1,414,304.22	4,646.56	1,418,232.89	(717.89)
132110	313385EZ5	108	FHLB D N	11/28/2008	4/30/2009		1.000%	1.004%	1,300,000	1,294,475.00	4,477.78	1,298,324.44	(628.34)
132210	313385EZ5	108	FHLB D N	12/2/2008	4/30/2009		1.001%	1.005%	1,501,000	1,494,781.31	5,008.34	1,499,065.38	(724.27)
131793	313385FD3	108	FHLB D N	11/13/2008	5/4/2009		1.450%	1.460%	4,000,000	3,972,288.89	22,394.44	3,994,133.33	(550.00)
132087	313385FE1	108	FHLB D N	11/28/2008	5/5/2009		1.100%	1.105%	7,952,000	7,913,609.51	30,129.25	7,939,983.64	(3,755.12)
131796	313385FM3	108	FHLB D N	11/14/2008	5/12/2009		1.600%	1.613%	250,000	248,011.11	1,533.33	249,544.44	0.00
131737	313385FN1	108	FHLB D N	11/10/2008	5/13/2009		1.450%	1.461%	235,000	233,258.39	1,344.07	234,561.33	(41.13)
132217	313385FN1	108	FHLB D N	12/4/2008	5/13/2009		0.870%	0.873%	2,000,000	1,992,266.67	5,703.33	1,996,266.67	(1,703.33)
131830	313589FN8	108	FNMA D N	11/14/2008	5/13/2009		1.550%	1.562%	6,765,000	6,712,571.25	40,195.38	6,752,372.00	(394.63)
131733	313385FP6	108	FHLB D N	11/10/2008	5/14/2009		1.550%	1.562%	220,000	218,247.64	1,345.05	219,579.56	(13.13)
131798	313385FT8	108	FHLB D N	11/14/2008	5/18/2009		1.600%	1.613%	185,000	183,478.89	1,134.67	184,613.56	0.00
132039	313385FV3	108	FHLB D N	11/26/2008	5/20/2009		1.181%	1.188%	25,000,000	24,856,475.69	103,337.50	24,945,555.56	(14,257.63)
131759	313385GB6	108	FHLB D N	11/13/2008	5/26/2009		1.600%	1.614%	11,502,000	11,402,827.20	71,056.80	11,473,884.00	0.00
131761	313385GB6	108	FHLB D N	11/13/2008	5/26/2009		1.600%	1.614%	5,000,000	4,956,888.89	30,888.89	4,987,777.78	0.00
131799	313385GB6	108	FHLB D N	11/14/2008	5/26/2009		1.850%	1.869%	2,500,000	2,475,204.86	17,729.17	2,493,888.89	954.86
132073	313385GB6	108	FHLB D N	11/26/2008	5/26/2009		1.100%	1.106%	1,175,000	1,168,501.60	4,523.75	1,172,127.78	(897.57)
133508	313385GB6	108	FHLB D N	2/24/2009	5/26/2009		0.500%	0.501%	155,000	154,804.10	77.50	154,621.11	(260.49)
131623	313385GC4	108	FHLB D N	11/4/2008	5/27/2009		2.050%	2.074%	309,000	305,410.45	2,604.18	308,230.93	216.30
131800	313385GC4	108	FHLB D N	11/14/2008	5/27/2009		1.800%	1.818%	7,000,000	6,932,100.00	48,300.00	6,982,577.78	2,177.78
131972	313385GD2	108	FHLB D N	11/21/2008	5/28/2009		1.500%	1.512%	20,000,000	19,843,333.33	109,166.67	19,949,333.33	(3,166.67)
132085	313385GD2	108	FHLB D N	11/28/2008	5/28/2009		1.100%	1.106%	14,435,000	14,355,166.43	54,692.61	14,398,431.33	(11,427.71)
132361	313385GH3	108	FHLB D N	12/11/2008	6/1/2009		0.450%	0.451%	2,006,000	2,001,687.10	2,783.33	1,999,541.79	(4,928.64)
133178	313589GH0	108	FNMA D N	2/2/2009	6/1/2009		0.430%	0.431%	7,960,000	7,948,685.74	5,514.51	7,934,373.22	(19,827.03)
131925	313397GJ4	108	FHLMC D N	11/20/2008	6/2/2009		1.400%	1.411%	40,000,000	39,698,222.22	205,333.33	39,869,111.11	(34,444.44)
128971	912795Q79	108	TREASURY BILLS	6/13/2008	6/4/2009		2.465%	2.527%	20,000,000	19,512,477.78	399,877.78	19,993,750.00	81,394.44
132419	313589GL1	108	FNMA D N	12/15/2008	6/4/2009		0.500%	0.501%	2,177,000	2,171,829.63	3,235.26	2,169,646.58	(5,418.31)
128871	3133XRHF0	108	FHLB - BULLET	6/10/2008	6/10/2009		2.730%	2.730%	15,000,000	15,000,000.00	126,262.50	15,065,625.00	65,625.00
133813	313397HA2	108	FHLMC D N	3/10/2009	6/18/2009		0.400%	0.400%	505,300	504,738.56	123.52	503,219.85	(1,642.23)
131763	313397HE4	108	FHLMC D N	11/13/2008	6/22/2009		1.650%	1.667%	1,500,000	1,484,806.25	9,556.25	1,493,508.33	(854.17)
131736	313385HJ8	108	FHLB D N	11/10/2008	6/26/2009		1.650%	1.667%	100,000	98,955.00	650.83	99,546.11	(59.72)
131732	313385HN9	108	FHLB D N	11/10/2008	6/30/2009		1.500%	1.515%	7,350,000	7,278,950.00	43,487.50	7,313,250.00	(9,187.50)
131928	313397HN4	108	FHLMC D N	11/20/2008	6/30/2009		1.450%	1.463%	30,000,000	29,731,750.00	159,500.00	29,850,000.00	(41,250.00)
131932	313397HN4	108	FHLMC D N	11/20/2008	6/30/2009		1.450%	1.463%	40,000,000	39,642,333.33	212,666.67	39,800,000.00	(55,000.00)
131246	313385HP4	108	FHLB D N	10/7/2008	7/1/2009		2.500%	2.547%	5,000,000	4,907,291.67	61,111.11	4,974,722.22	6,319.44

**MIAMI-DADE COUNTY**  
**REPORT WRITER**  
**AS OF DATE: March 31, 2009**  
**SORTING ORDER: FUND ICC#**

INVSMT NUMBER	CUSIP NUMBER	FUND NUMBER	DESCRIPTION	PURCHASE SET DATE	MATURITY DATE	CALL DATE	INTEREST RATE	YTM TRADING	SCHEDULED PAR VALUE	CURRENT BOOK VALUE	PERIOD-END INTEREST ACCRL	MARKET VALUE	UNREALIZED GAIN/LOSS
131624	313385HP4	108	FHLB D N	11/4/2008	7/1/2009		2.300%	2.336%	100,000	98,473.06	945.55	99,494.44	75.83
131825	313589HP1	108	FNMA D N	11/14/2008	7/1/2009		1.693%	1.711%	648,000	641,021.45	4,205.41	644,724.00	(502.86)
133719	313589HP1	108	FNMA D N	3/5/2009	7/1/2009		0.500%	0.501%	210,000	209,655.83	78.75	208,938.33	(796.25)
129767	912795Q87	108	TREASURY BILLS	7/22/2008	7/2/2009		2.215%	2.263%	30,000,000	29,363,187.50	466,995.83	29,981,250.00	151,066.67
132094	313385HQ2	108	FHLB D N	11/28/2008	7/2/2009		1.200%	1.209%	5,000,000	4,964,000.00	20,666.67	4,974,444.44	(10,222.23)
131824	313589HQ9	108	FNMA D N	11/14/2008	7/2/2009		1.695%	1.714%	5,000,000	4,945,854.17	32,487.50	4,974,444.44	(3,897.23)
132343	313589HQ9	108	FNMA D N	12/12/2008	7/2/2009		0.450%	0.451%	3,800,000	3,790,405.00	5,225.00	3,780,577.78	(15,052.22)
132211	313385HV1	108	FHLB D N	12/3/2008	7/7/2009		1.250%	1.259%	3,617,000	3,589,872.50	14,945.24	3,597,508.39	(7,309.35)
129528	TD0122	108	TIME DEPOSIT-EASTERN	7/9/2008	7/9/2009		3.250%	3.250%	5,000,000	5,000,000.00	37,397.26	5,000,000.00	0.00
129933	TD0001	108	TIME DEPOSIT MDTA L.	7/24/2008	7/24/2009		2.610%	2.610%	25,000	25,000.00	119.77	25,000.00	0.00
129957	912795Q95	108	TREASURY BILLS	7/31/2008	7/30/2009		2.260%	2.313%	20,000,000	19,542,977.80	306,355.54	19,981,250.00	131,916.66
131750	313397JY8	108	FHLMC D N	11/10/2008	8/3/2009		1.850%	1.876%	2,302,000	2,270,532.94	16,798.20	2,285,983.20	(1,347.94)
133128	313589KK8	108	FNMA D N	1/29/2009	8/14/2009		0.553%	0.555%	1,854,000	1,848,389.54	1,765.73	1,839,955.95	(10,199.32)
132470	313397KN0	108	FHLMC D N	12/17/2008	8/17/2009		0.750%	0.754%	77,000	76,610.19	168.44	76,403.76	(374.87)
131978	313313KS6	108	FFCB D N	11/21/2008	8/21/2009		1.550%	1.568%	35,000,000	34,588,604.17	197,409.72	34,721,127.78	(64,886.11)
131980	313313KS6	108	FFCB D N	11/21/2008	8/21/2009		1.550%	1.568%	45,000,000	44,471,062.50	253,812.50	44,641,450.00	(83,425.00)
132016	313313KS6	108	FFCB D N	11/25/2008	8/21/2009		1.550%	1.568%	100,000	98,841.81	546.80	99,203.22	(185.39)
133597	313397KV2	108	FHLMC D N	2/26/2009	8/24/2009		0.600%	0.602%	325,000	324,030.41	184.17	322,355.76	(1,858.82)
130958	912795S28	108	TREASURY BILLS	9/24/2008	8/27/2009		1.900%	1.934%	50,000,000	49,110,694.44	498,750.00	49,937,500.00	328,055.56
131222	912795S28	108	TREASURY BILLS	10/3/2008	8/27/2009		1.400%	1.418%	50,000,000	49,362,222.22	350,000.00	49,937,500.00	225,277.78
132014	313385KZ8	108	FHLB D N	11/25/2008	8/28/2009		1.600%	1.620%	10,000,000	9,877,333.33	56,444.45	9,916,394.44	(17,383.34)
133823	313385LD6	108	FHLB D N	3/11/2009	9/1/2009		0.560%	0.562%	256,000	255,307.09	83.63	253,791.36	(1,599.36)
132654	313397LD1	108	FHLMC D N	12/31/2008	9/1/2009		0.550%	0.552%	20,000,000	19,925,444.44	27,805.56	19,827,450.00	(125,800.00)
133974	313397LD1	108	FHLMC D N	3/20/2009	9/1/2009		0.420%	0.421%	977,000	975,119.28	136.78	968,570.93	(6,885.13)
133209	313589LD3	108	FNMA D N	2/3/2009	9/1/2009		0.600%	0.602%	1,150,000	1,145,975.00	1,092.50	1,140,078.38	(6,989.13)
134154	313397LS8	108	FHLMC D N	3/31/2009	9/14/2009		0.410%	0.411%	5,000,000	4,990,490.28	56.94	4,953,197.22	(37,350.00)
132506	313385LU8	108	FHLB D N	12/19/2008	9/16/2009		0.500%	0.502%	10,000,000	9,962,361.11	14,305.56	9,905,266.67	(71,400.00)
134159	313589MB6	108	FNMA D N	3/31/2009	9/23/2009		0.440%	0.441%	1,886,000	1,881,943.00	23.05	1,867,388.85	(14,577.20)
134192	313589MB6	108	FNMA D N	3/31/2009	9/23/2009		0.400%	0.401%	7,000,000	6,986,311.11	77.78	6,930,923.61	(55,465.28)
133886	313589MD2	108	FNMA D N	3/16/2009	9/25/2009		0.560%	0.562%	1,321,130	1,317,163.68	328.81	1,307,944.02	(9,548.47)
134152	313397MG3	108	FHLMC D N	3/31/2009	9/28/2009		0.445%	0.446%	6,897,000	6,881,568.92	85.25	6,827,340.30	(54,313.87)
134153	313397MG3	108	FHLMC D N	3/31/2009	9/28/2009		0.445%	0.446%	6,000,000	5,986,575.83	74.17	5,939,400.00	(47,250.00)
134146	313313MJ4	108	FFCB D N	3/31/2009	9/30/2009		0.400%	0.401%	15,000,000	14,969,500.00	166.67	14,847,575.00	(122,091.67)
132627	313397MJ7	108	FHLMC D N	12/31/2008	9/30/2009		0.650%	0.653%	20,000,000	19,901,416.67	32,861.11	19,795,755.56	(138,522.22)
133134	313397MJ7	108	FHLMC D N	2/2/2009	9/30/2009		0.640%	0.643%	10,000,000	9,957,333.33	10,311.11	9,897,877.78	(69,766.66)
132539	313385MK9	108	FHLB D N	12/23/2008	10/1/2009		0.630%	0.633%	440,000	437,828.60	762.30	435,481.93	(3,108.97)
132925	313385MK9	108	FHLB D N	1/16/2009	10/1/2009		0.570%	0.572%	40,000,000	39,836,600.00	47,500.00	39,589,266.67	(294,833.33)
132960	313385MK9	108	FHLB D N	1/21/2009	10/1/2009		0.620%	0.623%	25,000,000	24,891,069.44	30,138.89	24,743,291.67	(177,916.66)
132780	313589MK6	108	FNMA D N	1/8/2009	10/1/2009		0.550%	0.552%	30,000,000	29,878,083.33	38,041.67	29,691,950.00	(224,175.00)
133316	313589MK6	108	FNMA D N	2/10/2009	10/1/2009		0.600%	0.602%	1,236,000	1,231,200.20	1,030.00	1,223,308.34	(8,921.86)
133647	313589MK6	108	FNMA D N	3/3/2009	10/1/2009		0.590%	0.592%	10,000,000	9,965,255.56	4,752.78	9,897,316.67	(72,691.67)
133649	313589MK6	108	FNMA D N	3/3/2009	10/1/2009		0.650%	0.652%	750,000	747,129.17	392.71	742,298.75	(5,223.13)
134147	313313ML9	108	FFCB D N	3/31/2009	10/2/2009		0.400%	0.401%	13,000,000	12,973,277.78	144.44	12,866,446.67	(106,975.55)
133098	313589ML4	108	FNMA D N	1/29/2009	10/2/2009		0.602%	0.604%	1,000,000	995,886.33	1,036.78	989,675.56	(7,247.55)
127737	3133XQN65	108	FHLB - BULLET	4/7/2008	10/7/2009		2.600%	2.603%	5,330,000	5,329,822.98	66,980.33	5,376,637.50	46,814.52
132828	313589MX8	108	FNMA D N	1/12/2009	10/13/2009		0.480%	0.482%	2,500,000	2,490,866.67	2,633.33	2,472,645.83	(20,854.17)
132930	313385ND4	108	FHLB D N	1/20/2009	10/19/2009		0.600%	0.603%	2,000,000	1,990,933.33	2,366.67	1,977,443.33	(15,856.67)
132928	313385NH5	108	FHLB D N	1/15/2009	10/23/2009		0.600%	0.603%	1,489,000	1,482,026.52	1,886.07	1,471,872.36	(12,040.23)
134156	313397NH0	108	FHLMC D N	3/31/2009	10/23/2009		0.480%	0.481%	770,000	767,885.07	10.27	761,142.86	(6,752.48)
132189	313385NM4	108	FHLB D N	12/3/2008	10/27/2009		1.529%	1.551%	750,000	739,551.83	3,790.65	741,204.58	(2,137.90)
132008	313385NT9	108	FHLB D N	11/25/2008	11/2/2009		1.640%	1.666%	38,000,000	37,407,960.00	219,851.11	37,541,572.22	(86,238.89)
134149	313397PA3	108	FHLMC D N	3/31/2009	11/9/2009		0.440%	0.441%	8,000,000	7,978,195.56	97.78	7,900,346.67	(77,946.67)
134150	313397PA3	108	FHLMC D N	3/31/2009	11/9/2009		0.440%	0.441%	8,000,000	7,978,195.56	97.78	7,900,346.67	(77,946.67)
131975	313385PH3	108	FHLB D N	11/21/2008	11/16/2009		1.650%	1.678%	9,798,000	9,636,333.00	58,828.83	9,672,101.14	(23,060.69)

## MIAMI-DADE COUNTY

## REPORT WRITER

AS OF DATE: March 31, 2009

SORTING ORDER: FUND ICC#

INVSMT NUMBER	CUSIP NUMBER	FUND NUMBER	DESCRIPTION	PURCHASE SET DATE	MATURITY DATE	CALL DATE	INTEREST RATE	YTM TRADING	SCHEDULED PAR VALUE	CURRENT BOOK VALUE	PERIOD-END INTEREST ACRL	MARKET VALUE	UNREALIZED GAIN/LOSS
132117	313385PM2	108	FHLB D N	11/28/2008	11/20/2009		1.670%	1.698%	5,000,000	4,917,195.83	28,761.11	4,934,630.56	(11,326.38)
133602	313397PM7	108	FHLMC D N	3/2/2009	11/20/2009		0.720%	0.724%	6,000,000	5,968,440.00	3,600.00	5,921,556.67	(50,483.33)
132040	313385PR1	108	FHLB D N	11/26/2008	11/24/2009		1.700%	1.730%	45,000,000	44,228,625.00	267,750.00	44,401,575.00	(94,800.00)
132007	313385PS9	108	FHLB D N	11/25/2008	11/25/2009		1.700%	1.730%	1,350,000	1,326,731.25	8,096.25	1,331,971.50	(2,856.00)
132041	313385PS9	108	FHLB D N	11/26/2008	11/25/2009		1.700%	1.730%	40,000,000	39,312,444.44	238,000.00	39,465,822.22	(84,622.22)
133987	313385PS9	108	FHLB D N	3/23/2009	11/25/2009		0.600%	0.602%	600,000	597,530.00	90.00	591,987.33	(5,632.67)
132213	3133XSNT1	108	FHLB C I	12/4/2008	12/1/2009	6/1/2009	2.000%	2.000%	13,970,000	13,972,328.33	93,133.33	13,996,193.75	26,193.75
132661	313313PY8	108	FFCB D N	1/2/2009	12/1/2009		0.650%	0.654%	2,550,000	2,534,668.13	4,097.71	2,515,779.00	(22,986.84)
133221	313385PY6	108	FHLB D N	2/4/2009	12/1/2009		0.840%	0.846%	1,500,000	1,489,500.00	1,960.00	1,479,870.00	(11,590.00)
133651	313385PY6	108	FHLB D N	3/3/2009	12/1/2009		0.800%	0.805%	3,950,000	3,926,036.67	2,545.56	3,896,991.00	(31,591.23)
133260	313589PY3	108	FNMA D N	2/6/2009	12/1/2009		0.808%	0.813%	2,750,000	2,731,606.78	3,333.00	2,713,095.00	(21,844.78)
133717	313397QE4	108	FHLMC D N	3/5/2009	12/7/2009		0.880%	0.886%	227,000	225,462.96	149.82	223,878.75	(1,734.03)
134009	313397QE4	108	FHLMC D N	3/24/2009	12/7/2009		0.650%	0.653%	590,000	587,251.58	85.22	581,887.50	(5,449.30)
133757	313589QE6	108	FNMA D N	3/5/2009	12/7/2009		0.745%	0.749%	4,682,000	4,655,161.08	2,616.07	4,617,622.50	(40,154.65)
132599	313385QF6	108	FHLB D N	12/29/2008	12/8/2009		0.800%	0.806%	1,386,000	1,375,404.80	2,864.40	1,366,866.27	(11,402.93)
133603	313385QH2	108	FHLB D N	3/2/2009	12/10/2009		0.830%	0.835%	1,000,000	993,475.28	691.67	986,085.00	(8,081.95)
133650	313589QM8	108	FNMA D N	3/3/2009	12/14/2009		0.750%	0.754%	1,000,000	994,041.67	604.17	985,865.00	(8,780.84)
134160	313589QM8	108	FNMA D N	3/31/2009	12/14/2009		0.590%	0.593%	9,000,000	8,961,945.00	147.50	8,872,785.00	(89,307.50)
134157	313385QP4	108	FHLB D N	3/31/2009	12/16/2009		0.555%	0.557%	2,500,000	2,489,979.17	38.54	2,464,387.50	(25,630.21)
132961	313385QR0	108	FHLB D N	1/21/2009	12/18/2009		0.600%	0.603%	502,000	499,230.63	585.67	494,793.79	(5,022.51)
132625	313385QU3	108	FHLB D N	12/30/2008	12/21/2009		0.770%	0.776%	7,150,900	7,096,449.87	14,071.38	7,047,068.93	(63,452.32)
133097	313589QU0	108	FNMA D N	1/29/2009	12/21/2009		0.779%	0.785%	2,900,000	2,879,542.59	3,890.67	2,857,892.00	(25,541.26)
133716	313397QX2	108	FHLMC D N	3/5/2009	12/24/2009		0.780%	0.785%	6,450,000	6,408,913.50	3,773.25	6,355,281.75	(57,405.00)
134038	313397QX2	108	FHLMC D N	3/26/2009	12/24/2009		0.620%	0.623%	9,000,000	8,957,685.00	930.00	8,867,835.00	(90,780.00)
134193	313397QX2	108	FHLMC D N	3/31/2009	12/24/2009		0.630%	0.633%	1,627,000	1,619,369.37	28.47	1,603,107.51	(16,290.34)
133648	313589RB1	108	FNMA D N	3/3/2009	12/28/2009		0.830%	0.836%	750,000	744,812.50	501.46	747,421.88	2,107.92
133990	313589RB1	108	FNMA D N	3/23/2009	12/28/2009		0.580%	0.583%	30,000,000	29,864,666.67	4,350.00	29,896,875.00	27,858.33
133601	313397RC7	108	FHLMC D N	3/2/2009	12/29/2009		0.860%	0.866%	2,000,000	1,985,571.11	1,433.33	1,993,125.00	6,120.56
134043	313589RC9	108	FNMA D N	3/26/2009	12/29/2009		0.620%	0.623%	5,000,000	4,976,061.11	516.67	4,982,812.50	6,234.72
132622	3128X8DH2	108	FHLMC C I	12/30/2008	12/30/2009	6/30/2009	1.000%	1.000%	10,000,000	10,000,000.00	25,277.78	10,003,125.00	3,125.00
134042	313397RD5	108	FHLMC D N	3/26/2009	12/30/2009		0.620%	0.623%	6,000,000	5,971,170.00	620.00	5,979,375.00	7,585.00
134069	313589RD7	108	FNMA D N	3/25/2009	12/30/2009		0.600%	0.603%	1,877,000	1,868,240.66	218.98	1,870,547.81	2,088.17
132657	313385RE8	108	FHLB D N	1/2/2009	12/31/2009		0.770%	0.776%	10,000,000	9,922,358.33	19,036.11	9,965,625.00	24,230.56
134158	313589RE5	108	FNMA D N	3/31/2009	12/31/2009		0.600%	0.603%	10,000,000	9,954,166.67	166.67	9,965,625.00	11,291.66
133988	313397RJ2	108	FHLMC D N	3/23/2009	1/4/2010		0.620%	0.623%	20,000,000	19,901,144.44	3,100.00	19,918,750.00	14,505.56
134008	313397RJ2	108	FHLMC D N	3/24/2009	1/4/2010		0.620%	0.623%	8,000,000	7,960,595.56	1,102.22	7,967,500.00	5,802.22
134070	313397RJ2	108	FHLMC D N	3/27/2009	1/4/2010		0.630%	0.633%	2,000,000	1,990,095.00	175.00	1,991,875.00	1,605.00
133884	313589RJ4	108	FNMA D N	3/13/2009	1/4/2010		0.830%	0.836%	4,522,250	4,491,283.90	1,981.00	4,503,878.36	10,613.46
134027	313397RL7	108	FHLMC D N	3/25/2009	1/6/2010		0.630%	0.633%	4,583,000	4,559,981.88	561.42	4,564,381.56	3,838.26
133394	TD0001	108	TIME DEPOSIT MDTA LO	2/14/2009	1/8/2010		0.600%	0.600%	25,000	25,000.00	18.90	25,000.00	0.00
132924	313385RR9	108	FHLB D N	1/16/2009	1/11/2010		0.750%	0.756%	10,000,000	9,925,000.00	15,625.00	9,959,375.00	18,750.00
133928	313385RU2	108	FHLB D N	3/19/2009	1/14/2010		0.800%	0.805%	300,000	297,993.33	86.67	298,781.25	701.25
133929	313385SB3	108	FHLB D N	3/19/2009	1/21/2010		0.850%	0.856%	150,000	148,909.17	46.04	149,343.75	388.54
134028	313397SG7	108	FHLMC D N	3/25/2009	1/26/2010		0.700%	0.704%	5,000,000	4,970,152.78	680.56	4,978,125.00	7,291.66
134101	313397SG7	108	FHLMC D N	3/30/2009	1/26/2010		0.660%	0.664%	700,000	696,124.33	25.67	696,937.50	787.50
134148	313397SG7	108	FHLMC D N	3/31/2009	1/26/2010		0.670%	0.674%	9,000,000	8,949,582.50	167.50	8,960,625.00	10,875.00
134151	313397SG7	108	FHLMC D N	3/31/2009	1/26/2010		0.670%	0.674%	7,000,000	6,960,786.39	130.28	6,969,375.00	8,458.33
134040	313397SK8	108	FHLMC D N	3/26/2009	1/29/2010		0.660%	0.664%	4,000,000	3,977,340.00	440.00	3,982,500.00	4,720.00
134144	313385SN7	108	FHLB D N	3/30/2009	2/1/2010		0.700%	0.704%	2,442,000	2,427,375.13	94.97	2,430,553.13	3,083.03
134041	313589SN4	108	FNMA D N	3/26/2009	2/1/2010		0.790%	0.795%	3,550,000	3,525,694.33	467.42	3,533,359.38	7,197.63
133393	TD0001	108	TIME DEPOSIT SMALL B	2/15/2009	2/16/2010		1.020%	1.020%	4,000,000	4,000,000.00	5,030.14	4,000,000.00	0.00
130256	31331Y6H8	108	FFCB - BULLETT	8/18/2008	2/18/2010		3.150%	3.150%	10,000,000	10,000,000.00	37,625.00	10,187,500.00	187,500.00
134137	313385TL0	108	FHLB D N	3/27/2009	2/23/2010		0.750%	0.755%	1,168,000	1,159,897.00	121.67	1,161,795.00	1,776.33
133882	TD0135	108	TIME DEPOSIT - TD BA	3/13/2009	3/15/2010		2.000%	2.000%	5,000,000	5,000,000.00	5,205.48	5,000,000.00	0.00

**MIAMI-DADE COUNTY**  
**REPORT WRITER**  
**AS OF DATE: March 31, 2009**  
**SORTING ORDER: FUND ICC#**

INVSMT NUMBER	CUSIP NUMBER	FUND NUMBER	DESCRIPTION	PURCHASE SET DATE	MATURITY DATE	CALL DATE	INTEREST RATE	YTM TRADING	SCHEDULED PAR VALUE	CURRENT BOOK VALUE	PERIOD-END INTEREST ACCRL	MARKET VALUE	UNREALIZED GAIN/LOSS
134072	313313UR7	108	FFCB D N	3/27/2009	3/24/2010		0.695%	0.700%	5,000,000	4,965,056.94	482.64	4,970,312.50	4,772.92
134039	313385UR5	108	FHLB D N	3/26/2009	3/24/2010		0.850%	0.857%	20,000,000	19,828,583.33	2,833.33	19,881,250.00	49,833.34
128098	3136F9MU4	108	FNMA C I	4/30/2008	4/30/2010	4/30/2009	3.000%	3.000%	11,000,000	11,000,000.00	138,416.67	11,017,187.50	17,187.50
128396	3136F9PP2	108	FNMA C I	5/14/2008	5/14/2010	5/14/2010	3.125%	3.125%	15,000,000	15,000,000.00	178,385.42	15,042,187.50	42,187.50
132291	3136F9Y23	108	FNMA C I	12/10/2008	6/10/2010	6/10/2009	2.500%	2.500%	10,000,000	10,000,000.00	77,083.33	10,015,625.00	15,625.00
132318	31331GGS2	108	FFCB - BULLET	12/11/2008	6/11/2010		2.000%	2.000%	30,000,000	30,000,000.00	183,333.33	30,281,250.00	281,250.00
132319	31331GGS2	108	FFCB - BULLET	12/11/2008	6/11/2010		2.000%	2.000%	20,000,000	20,000,000.00	122,222.22	20,187,500.00	187,500.00
132420	3133XSPC6	108	FHLB C I	12/16/2008	6/16/2010	6/16/2009	2.000%	2.000%	15,000,000	15,000,000.00	87,500.00	15,028,125.00	28,125.00
129002	31398ASH6	108	FNMA C I	6/16/2008	6/16/2010	6/16/2009	3.550%	3.550%	10,000,000	10,000,000.00	103,541.67	10,056,250.00	56,250.00
129402	3136F9WV1	108	FNMA C I	7/2/2008	7/2/2010	7/2/2009	4.000%	4.000%	10,000,000	10,000,000.00	98,888.89	10,078,125.00	78,125.00
129495	31331Y2P4	108	FFCB - BULLET	7/7/2008	7/7/2010		3.300%	3.300%	6,310,000	6,310,000.00	48,587.00	6,481,553.13	171,553.13
132849	31331GJU4	108	FFCB C I	1/13/2009	7/13/2010	4/13/2009	1.430%	1.430%	20,000,000	20,000,000.00	61,966.67	19,987,500.00	(12,500.00)
132861	3136F93C5	108	FNMA STEP UP	1/13/2009	7/13/2010	4/13/2009	1.250%	1.250%	10,000,000	10,000,000.00	27,083.33	10,000,000.00	0.00
133577	3128X8MP4	108	FHLMC C I	2/27/2009	8/27/2010	5/27/2009	1.625%	1.625%	20,000,000	20,000,000.00	30,694.44	20,025,000.00	25,000.00
130740	31331GBC2	108	FFCB C I	9/15/2008	9/15/2010	9/15/2009	3.300%	3.300%	5,000,000	5,000,000.00	7,333.33	5,048,437.50	48,437.50
131090	912828JL5	108	TREASURY NOTES	9/30/2008	9/30/2010		2.000%	2.085%	10,000,000	9,987,706.55	546.45	10,200,000.00	212,293.45
134139	3136FHHV0	108	FNMA - BULLET	3/30/2009	9/30/2010		1.200%	1.200%	10,000,000	10,000,000.00	333.33	10,000,000.00	0.00
131173	3133XS7M4	108	FHLB C I	10/1/2008	10/1/2010	4/1/2009	3.300%	3.300%	5,000,000	5,000,000.00	82,500.00	5,000,000.00	0.00
132875	3136F93G6	108	FNMA STEP UP	1/14/2009	1/14/2011	7/14/2009	1.250%	1.250%	20,000,000	20,000,000.00	53,472.22	20,006,250.00	6,250.00
133070	3136F93W1	108	FNMA STEP UP	1/28/2009	1/28/2011	4/28/2009	1.250%	1.255%	12,000,000	11,998,800.00	26,250.00	11,996,250.00	(2,550.00)
133322	3136FHAA3	108	FNMA C I	2/11/2009	2/11/2011	2/11/2010	2.000%	2.000%	15,000,000	15,000,000.00	41,666.67	15,046,875.00	46,875.00
134037	3128X8HC9	108	FHLMC STEP UP	3/26/2009	2/18/2011	5/18/2009	1.500%	1.500%	10,000,000	10,015,833.33	17,916.66	10,006,250.00	6,250.00
134098	3136FHHW8	108	FNMA - BULLET	3/30/2009	3/30/2011		1.600%	1.600%	20,000,000	20,000,000.00	888.89	20,068,750.00	68,750.00
127752	31398APP1	108	FNMA C I	4/8/2008	4/1/2011	4/1/2009	3.150%	3.194%	10,000,000	9,989,533.55	157,500.00	10,000,000.00	10,466.45
134096	3137EABZ1	108	FHLMC - BULLET	3/27/2009	4/26/2011		1.625%	1.648%	20,000,000	19,990,600.00	3,611.11	20,056,250.00	65,650.00
132262	31398ARU8	108	FNMA C I	12/8/2008	6/10/2011	6/10/2009	3.750%	3.458%	15,000,000	15,103,758.32	173,437.50	15,037,500.00	(66,258.32)
132526	3136F9Y56	108	FNMA C I	12/22/2008	6/22/2011	6/22/2009	3.000%	3.000%	10,000,000	10,000,000.00	82,500.00	10,009,375.00	9,375.00
132738	3136F92H5	108	FNMA C I	1/6/2009	7/6/2011	7/6/2009	2.000%	2.021%	10,000,000	9,995,000.00	47,222.22	9,956,250.00	(38,750.00)
133983	3136FHER2	108	FNMA C I	3/23/2009	9/23/2011	3/23/2010	2.150%	2.150%	5,000,000	5,000,000.00	2,388.89	4,985,937.50	(14,062.50)
132367	31331GGQ6	108	FFCB C I	12/15/2008	12/15/2011	12/15/2009	3.000%	3.000%	15,000,000	15,000,000.00	132,500.00	15,103,125.00	103,125.00
132576	3133XSQH4	108	FHLB C I	12/29/2008	12/29/2011	12/29/2009	3.000%	3.000%	5,000,000	5,000,000.00	38,333.33	5,035,937.50	35,937.50
133223	31331GKY4	108	FFCB - BULLET	2/5/2009	1/17/2012		2.000%	2.220%	5,475,000	5,446,538.17	22,812.50	5,488,687.50	47,928.50
132932	3128X8EL2	108	FHLMC C I	1/20/2009	1/20/2012	1/20/2011	2.200%	2.200%	10,000,000	10,000,000.00	43,388.89	10,062,500.00	62,500.00
132933	3128X8EL2	108	FHLMC C I	1/20/2009	1/20/2012	1/20/2011	2.200%	2.200%	5,000,000	5,000,000.00	21,694.44	5,031,250.00	31,250.00
133010	3133XSWM6	108	FHLB - BULLET	1/23/2009	1/23/2012		2.100%	2.100%	4,000,000	4,000,000.00	15,866.67	3,985,000.00	(15,000.00)
133133	3128X8GP1	108	FHLMC C I	2/2/2009	2/2/2012	2/2/2010	2.250%	2.250%	30,000,000	30,000,000.00	110,625.00	29,962,500.00	(37,500.00)
133369	3136FHAQ8	108	FNMA STEP UP	2/17/2009	2/17/2012	2/17/2010	2.000%	2.000%	3,000,000	3,000,000.00	7,333.33	3,010,312.50	10,312.50
134099	3136FHHJ7	108	FNMA C I	3/30/2009	10/1/2012	4/1/2010	2.320%	2.320%	10,000,000	10,000,000.00	644.44	10,028,125.00	28,125.00
132889	3133XSSJ8	108	FHLB C I	1/15/2009	1/15/2013	4/15/2009	3.000%	3.000%	8,665,000	8,665,000.00	54,878.33	8,667,707.81	2,707.81
133534	31331GNG0	108	FFCB C I	2/25/2009	2/25/2013	2/25/2010	3.000%	3.000%	10,000,000	10,000,000.00	30,000.00	10,015,625.00	15,625.00
134036	31331GRG6	108	FFCB - BULLET	3/26/2009	3/26/2013		2.500%	2.511%	15,000,000	14,994,000.00	5,208.33	14,985,937.50	(8,062.50)
132848	3133XSSM1	108	FHLB C I	1/13/2009	1/13/2014	7/13/2009	3.150%	3.150%	5,000,000	5,000,000.00	34,125.00	4,993,750.00	(6,250.00)
133437	3128X8JM5	108	FHLMC STEP UP	2/19/2009	2/19/2014	5/19/2009	2.250%	2.271%	8,000,000	7,992,000.00	21,000.00	8,012,500.00	20,500.00
133558	3128X8KJ0	108	FHLMC STEP UP	2/26/2009	2/26/2014	5/26/2009	3.000%	3.000%	10,000,000	10,000,000.00	29,166.67	10,018,750.00	18,750.00
<b>108 Total</b>									<b>1,843,204,563</b>	<b>1,831,841,457.67</b>	<b>8,911,346.05</b>	<b>1,837,255,285.75</b>	<b>(79,941.80)</b>
134222	GOVTMMKT7	109	GOVERNMENT MONEY MAR	3/1/2009	4/1/2009		0.259%	0.259%	16,012,291	16,012,290.55	3,568.41	16,012,290.55	0.00
134224	GOVTMMKT7	109	GOVERNMENT MONEY MAR	3/1/2009	4/1/2009		0.259%	0.259%	3,650	3,649.78	0.81	3,649.78	0.00
134225	GOVTMMKT7	109	GOVERNMENT MONEY MAR	3/19/2009	4/1/2009		0.259%	0.259%	22,000,000	22,000,000.00	2,056.01	22,000,000.00	0.00
129607	313385DU7	109	FHLB D N	7/14/2008	4/1/2009		2.640%	2.692%	12,000,000	11,770,320.00	229,680.00	12,000,000.00	0.00
131392	313385DU7	109	FHLB D N	10/16/2008	4/1/2009		2.700%	2.734%	6,165,000	6,087,783.38	77,216.62	6,165,000.00	0.00
131414	313385DU7	109	FHLB D N	10/16/2008	4/1/2009		3.050%	3.094%	2,483,000	2,447,869.00	35,131.00	2,483,000.00	0.00
133227	313397DU2	109	FHLMC D N	2/5/2009	4/1/2009		0.400%	0.400%	510,000	509,688.33	311.67	510,000.00	0.00
131277	313589DU4	109	FNMA D N	10/7/2008	4/1/2009		2.350%	2.377%	7,000,000	6,919,577.78	80,422.22	7,000,000.00	0.00
131829	313589DU4	109	FNMA D N	11/13/2008	4/1/2009		1.270%	1.276%	2,281,000	2,269,814.86	11,185.14	2,281,000.00	0.00

**MIAMI-DADE COUNTY**  
**REPORT WRITER**  
**AS OF DATE: March 31, 2009**  
**SORTING ORDER: FUND ICC#**

INVSMT NUMBER	CUSIP NUMBER	FUND NUMBER	DESCRIPTION	PURCHASE SET DATE	MATURITY DATE	CALL DATE	INTEREST RATE	YTM TRADING	SCHEDULED PAR VALUE	CURRENT BOOK VALUE	PERIOD-END INTEREST ACCRL	MARKET VALUE	UNREALIZED GAIN/LOSS
132374	313589DU4	109	FNMA D N	12/15/2008	4/1/2009		0.300%	0.300%	500,000	499,554.17	445.83	500,000.00	0.00
133229	313589DU4	109	FNMA D N	2/5/2009	4/1/2009		0.400%	0.400%	225,000	224,862.50	137.50	225,000.00	0.00
132537	313385EA0	109	FHLB D N	12/23/2008	4/7/2009		0.354%	0.354%	6,000,000	5,993,805.00	5,841.00	5,998,400.00	(1,246.00)
128795	313385EG7	109	FHLB D N	6/5/2008	4/13/2009		2.480%	2.534%	3,808,000	3,726,153.39	78,698.66	3,805,969.07	1,117.02
131428	313385EG7	109	FHLB D N	10/17/2008	4/13/2009		3.100%	3.148%	6,146,000	6,051,795.48	87,853.65	6,142,722.13	3,073.00
122141	31331XVG4	109	FFCB BULLET	5/25/2007	4/13/2009		4.875%	5.080%	15,000,000	14,985,420.18	341,250.00	15,023,437.50	38,017.32
131551	313385EK8	109	FHLB D N	10/31/2008	4/16/2009		2.270%	2.294%	2,500,000	2,473,674.31	23,961.11	2,498,333.33	697.91
131556	313385EK8	109	FHLB D N	10/31/2008	4/16/2009		2.270%	2.294%	2,247,000	2,223,338.47	21,536.24	2,245,502.00	627.29
129594	313385EP7	109	FHLB D N	7/11/2008	4/20/2009		2.600%	2.654%	10,000,000	9,795,611.11	190,666.67	9,991,555.56	5,277.78
131278	313385EP7	109	FHLB D N	10/7/2008	4/20/2009		2.400%	2.432%	1,108,000	1,093,596.00	13,000.53	1,107,064.36	467.83
128015	3133XQV66	109	FHLB BULLET	4/25/2008	4/21/2009		2.520%	2.727%	10,000,000	9,989,972.30	112,000.00	10,012,500.00	22,527.70
131519	313385ET9	109	FHLB D N	10/24/2008	4/24/2009		3.000%	3.046%	2,608,000	2,568,445.33	34,556.00	2,605,334.04	2,332.71
132538	313385ET9	109	FHLB D N	12/23/2008	4/24/2009		0.400%	0.401%	1,500,000	1,497,966.67	1,650.00	1,498,466.67	(1,150.00)
132370	313397EW7	109	FHLMC D N	12/15/2008	4/27/2009		0.425%	0.426%	2,000,000	1,996,859.72	2,526.39	1,997,688.89	(1,697.22)
133561	313397EW7	109	FHLMC D N	2/26/2009	4/27/2009		0.350%	0.350%	400,000	399,766.67	132.22	399,537.78	(361.11)
133137	313397EX5	109	FHLMC D N	2/2/2009	4/28/2009		0.300%	0.300%	4,350,000	4,346,918.75	2,102.50	4,344,780.00	(4,241.25)
132209	313385EZ5	109	FHLB D N	12/2/2008	4/30/2009		1.001%	1.005%	3,499,000	3,484,503.55	11,674.99	3,494,490.18	(1,688.36)
132371	313385FA9	109	FHLB D N	12/15/2008	5/1/2009		0.400%	0.401%	650,000	649,010.56	772.77	649,133.33	(650.00)
132534	313385FD3	109	FHLB D N	12/23/2008	5/4/2009		0.400%	0.401%	3,000,000	2,995,600.00	3,300.00	2,995,600.00	(3,300.00)
133135	313397FD8	109	FHLMC D N	2/2/2009	5/4/2009		0.350%	0.350%	8,000,000	7,992,922.22	4,511.11	7,988,266.67	(9,166.66)
132129	313385FH4	109	FHLB D N	12/1/2008	5/8/2009		1.150%	1.156%	1,750,000	1,741,167.36	6,764.24	1,747,122.22	(809.38)
132294	313385FT8	109	FHLB D N	12/10/2008	5/18/2009		0.550%	0.551%	250,000	249,392.71	427.78	249,477.78	(342.71)
132535	313385FT8	109	FHLB D N	12/23/2008	5/18/2009		0.406%	0.407%	1,500,000	1,497,530.17	1,674.75	1,496,866.67	(2,338.25)
132130	313385GE0	109	FHLB D N	12/1/2008	5/29/2009		1.250%	1.258%	5,000,000	4,968,923.61	21,006.95	4,987,111.11	(2,819.45)
132192	313385GE0	109	FHLB D N	12/3/2008	5/29/2009		1.200%	1.207%	1,829,000	1,818,208.90	7,255.03	1,824,285.24	(1,178.69)
132362	313385GH3	109	FHLB D N	12/11/2008	6/1/2009		0.450%	0.451%	909,000	907,045.65	1,261.24	906,073.53	(2,233.37)
133180	313397GH8	109	FHLMC D N	2/3/2009	6/1/2009		0.470%	0.471%	1,000,000	998,459.44	744.17	996,780.56	(2,423.05)
133179	313589GH0	109	FNMA D N	2/2/2009	6/1/2009		0.430%	0.431%	1,040,000	1,038,521.76	720.49	1,036,651.78	(2,590.47)
133466	313385GL4	109	FHLB D N	2/20/2009	6/4/2009		0.480%	0.481%	350,000	349,514.67	186.67	348,817.78	(883.56)
132418	313589GL1	109	FNMA D N	12/15/2008	6/4/2009		0.500%	0.501%	2,823,000	2,816,295.37	4,195.29	2,813,464.53	(7,026.13)
128873	3133XRHF0	109	FHLB - BULLET	6/10/2008	6/10/2009		2.730%	2.730%	10,000,000	10,000,000.00	84,175.00	10,043,750.00	43,750.00
129633	313313GX0	109	FFCB D N	7/14/2008	6/15/2009		2.680%	2.749%	11,000,000	10,724,853.33	213,730.00	10,956,458.33	17,875.00
131619	313385GX8	109	FHLB D N	11/3/2008	6/15/2009		2.600%	2.643%	150,000	147,573.33	1,614.17	149,406.25	218.75
133812	313397HA2	109	FHLMC D N	3/10/2009	6/18/2009		0.400%	0.400%	317,700	317,347.00	77.66	316,392.14	(1,032.53)
132131	313385HB5	109	FHLB D N	12/1/2008	6/19/2009		1.253%	1.262%	3,350,000	3,326,680.28	14,108.43	3,336,032.36	(4,756.35)
131393	313397HE4	109	FHLMC D N	10/16/2008	6/22/2009		3.000%	3.064%	8,000,000	7,834,000.00	111,333.33	7,965,377.78	20,044.45
129129	3133XRP46	109	FHLB - BULLET	6/23/2008	6/23/2009		3.000%	3.059%	8,000,000	7,997,722.87	65,333.33	8,045,000.00	47,277.13
131930	313385HG4	109	FHLB D N	11/20/2008	6/24/2009		1.800%	1.820%	200,000	197,840.00	1,320.00	199,113.33	(46.67)
132918	313385HH2	109	FHLB D N	1/16/2009	6/25/2009		0.500%	0.501%	250,000	249,444.44	260.42	248,878.47	(826.39)
131999	313385HJ8	109	FHLB D N	11/24/2008	6/26/2009		2.364%	2.398%	100,000	98,594.73	840.54	99,546.11	110.84
133509	313385HM1	109	FHLB D N	2/24/2009	6/29/2009		0.600%	0.601%	100,000	99,791.67	60.00	99,530.28	(321.39)
132504	313589HP1	109	FNMA D N	12/19/2008	7/1/2009		0.400%	0.401%	6,000,000	5,987,066.67	6,866.66	5,969,666.67	(24,266.66)
129758	912795Q87	109	TREASURY BILLS	7/21/2008	7/2/2009		2.140%	2.185%	20,000,000	19,588,644.44	301,977.78	19,987,500.00	96,877.78
133973	313385HQ2	109	FHLB D N	3/20/2009	7/2/2009		0.350%	0.350%	200,000	199,797.78	23.33	198,977.78	(843.33)
133468	313397HU8	109	FHLMC D N	2/20/2009	7/6/2009		0.550%	0.551%	850,000	848,233.89	519.44	845,466.67	(3,286.66)
132212	313385HV1	109	FHLB D N	12/3/2008	7/7/2009		1.250%	1.259%	1,304,000	1,294,220.00	5,388.06	1,296,972.89	(2,635.17)
132222	313385JC1	109	FHLB D N	12/4/2008	7/14/2009		1.120%	1.128%	2,870,000	2,850,177.87	10,536.09	2,853,417.78	(7,296.18)
129818	31331Y4Q0	109	FFCB - BULLET	7/24/2008	7/24/2009		2.950%	2.950%	5,000,000	5,000,000.00	27,451.39	5,039,062.50	39,062.50
133773	313397JR3	109	FHLMC D N	3/10/2009	7/27/2009		0.460%	0.461%	1,177,000	1,174,909.52	330.87	1,169,349.50	(5,890.89)
133099	313589JT1	109	FNMA D N	1/29/2009	7/29/2009		0.535%	0.536%	3,350,000	3,340,988.97	3,086.65	3,327,852.78	(16,222.84)
129961	912795Q95	109	TREASURY BILLS	7/31/2008	7/30/2009		2.260%	2.313%	10,000,000	9,771,488.90	153,177.77	9,990,625.00	65,958.33
133865	313385JV9	109	FHLB D N	3/16/2009	7/31/2009		0.410%	0.411%	1,337,000	1,334,913.91	243.63	1,327,922.51	(7,235.03)
133506	313589JV6	109	FNMA D N	2/24/2009	7/31/2009		0.620%	0.622%	135,000	134,634.98	83.70	134,083.43	(635.26)
133795	313589JV6	109	FNMA D N	3/10/2009	7/31/2009		0.550%	0.551%	125,000	124,726.91	42.01	124,151.32	(617.60)

**MIAMI-DADE COUNTY**  
**REPORT WRITER**  
**AS OF DATE: March 31, 2009**  
**SORTING ORDER: FUND ICC#**

INVSMT NUMBER	CUSIP NUMBER	FUND NUMBER	DESCRIPTION	PURCHASE SET DATE	MATURITY DATE	CALL DATE	INTEREST RATE	YTM TRADING	SCHEDULED PAR VALUE	CURRENT BOOK VALUE	PERIOD-END INTEREST ACCRL	MARKET VALUE	UNREALIZED GAIN/LOSS
132173	313385JY3	109	FHLB D N	12/2/2008	8/3/2009		1.450%	1.464%	1,300,000	1,287,223.89	6,283.33	1,290,954.89	(2,552.33)
131751	313397JY8	109	FHLMC D N	11/10/2008	8/3/2009		1.850%	1.876%	7,698,000	7,592,772.62	56,174.01	7,644,439.03	(4,507.60)
133772	313397JY8	109	FHLMC D N	3/10/2009	8/3/2009		0.500%	0.501%	1,000,000	997,972.22	305.56	993,042.22	(5,235.56)
133866	313589KC6	109	FNMA D N	3/16/2009	8/7/2009		0.400%	0.401%	1,250,000	1,248,000.00	222.22	1,241,022.22	(7,200.00)
133129	313589KK8	109	FNMA D N	1/29/2009	8/14/2009		0.553%	0.555%	4,146,000	4,133,453.63	3,948.60	4,114,594.05	(22,808.18)
133596	313397KV2	109	FHLMC D N	2/26/2009	8/24/2009		0.600%	0.602%	1,180,000	1,176,479.67	668.67	1,170,399.39	(6,748.95)
132174	313385KW5	109	FHLB D N	12/2/2008	8/25/2009		1.400%	1.415%	1,000,000	989,655.56	4,666.66	991,807.78	(2,514.44)
133709	313589KX0	109	FNMA D N	3/4/2009	8/26/2009		0.550%	0.551%	3,000,000	2,991,979.17	1,283.33	2,975,255.00	(18,007.50)
133801	313385KZ8	109	FHLB D N	3/11/2009	8/28/2009		0.530%	0.531%	1,450,000	1,446,370.97	448.29	1,437,877.19	(8,942.07)
133708	313397LC3	109	FHLMC D N	3/4/2009	8/31/2009		0.560%	0.562%	2,000,000	1,994,400.00	871.11	1,982,857.78	(12,413.33)
132629	313385LD6	109	FHLB D N	12/31/2008	9/1/2009		0.700%	0.703%	100,000	99,525.56	176.94	99,137.25	(565.25)
133822	313385LD6	109	FHLB D N	3/11/2009	9/1/2009		0.560%	0.562%	1,294,000	1,290,497.58	422.71	1,282,836.02	(8,084.28)
132891	313397LD1	109	FHLMC D N	1/15/2009	9/1/2009		0.550%	0.552%	300,000	298,950.42	348.33	297,411.75	(1,887.00)
133439	313397LD1	109	FHLMC D N	2/19/2009	9/1/2009		0.620%	0.622%	2,000,000	1,993,317.78	1,412.22	1,982,745.00	(11,985.00)
133920	313397LD1	109	FHLMC D N	3/19/2009	9/1/2009		0.400%	0.401%	800,000	798,524.44	115.56	793,098.00	(5,542.00)
133208	313589LD3	109	FNMA D N	2/3/2009	9/1/2009		0.600%	0.602%	850,000	847,025.00	807.50	842,666.63	(5,165.88)
133228	313589LD3	109	FNMA D N	2/5/2009	9/1/2009		0.610%	0.612%	1,792,000	1,785,684.20	1,670.04	1,776,539.52	(10,814.72)
132032	313385LM6	109	FHLB D N	11/25/2008	9/9/2009		1.650%	1.672%	1,769,000	1,745,649.20	10,297.05	1,752,939.94	(3,006.31)
132373	313385LN4	109	FHLB D N	12/15/2008	9/10/2009		0.640%	0.643%	4,000,000	3,980,871.11	7,608.89	3,963,460.00	(25,020.00)
132295	313385LS3	109	FHLB D N	12/10/2008	9/14/2009		0.800%	0.805%	3,710,000	3,687,080.44	9,233.78	3,675,272.34	(21,041.88)
133321	313397LS8	109	FHLMC D N	2/11/2009	9/14/2009		0.700%	0.703%	5,500,000	5,477,006.94	5,240.28	5,448,516.94	(33,730.28)
132505	313385LU8	109	FHLB D N	12/19/2008	9/16/2009		0.500%	0.502%	35,605,000	35,470,986.74	50,934.93	35,267,701.97	(254,219.70)
132507	313385LW4	109	FHLB D N	12/19/2008	9/18/2009		0.500%	0.502%	2,828,000	2,817,277.17	4,045.61	2,800,890.48	(20,432.30)
132565	313385MA1	109	FHLB D N	12/26/2008	9/22/2009		0.620%	0.623%	2,000,000	1,990,700.00	3,306.67	1,980,376.67	(13,630.00)
132566	313385MA1	109	FHLB D N	12/26/2008	9/22/2009		0.620%	0.623%	2,200,000	2,189,770.00	3,637.33	2,178,414.33	(14,993.00)
133774	313397MD0	109	FHLMC D N	3/10/2009	9/25/2009		0.630%	0.632%	1,000,000	996,517.50	385.00	990,019.17	(6,883.33)
133885	313589MD2	109	FNMA D N	3/16/2009	9/25/2009		0.560%	0.562%	678,870	676,831.88	168.96	672,094.31	(4,906.53)
132658	313397MJ7	109	FHLMC D N	1/2/2009	9/30/2009		0.550%	0.552%	3,000,000	2,987,579.17	4,079.17	2,969,363.33	(22,295.01)
133130	313397MJ7	109	FHLMC D N	1/30/2009	9/30/2009		0.630%	0.633%	3,000,000	2,987,242.50	3,202.50	2,969,363.33	(21,081.67)
133799	313397MJ7	109	FHLMC D N	3/11/2009	9/30/2009		0.600%	0.602%	3,000,000	2,989,850.00	1,050.00	2,969,363.33	(21,536.67)
133429	313589MJ9	109	FNMA D N	2/18/2009	9/30/2009		0.750%	0.754%	550,000	547,433.33	481.25	544,383.28	(3,531.30)
132503	313589MK6	109	FNMA D N	12/19/2008	10/1/2009		0.600%	0.603%	20,000,000	19,904,666.67	34,333.33	19,794,633.33	(144,366.67)
132659	313589MK6	109	FNMA D N	1/2/2009	10/1/2009		0.630%	0.633%	25,000,000	24,881,000.00	38,937.50	24,743,291.67	(176,645.83)
133211	313589MK6	109	FNMA D N	2/4/2009	10/1/2009		0.700%	0.703%	850,000	846,049.86	925.56	841,271.92	(5,703.50)
133317	313589MK6	109	FNMA D N	2/10/2009	10/1/2009		0.600%	0.602%	2,264,000	2,255,208.13	1,886.67	2,240,752.49	(16,342.31)
133868	313589MR1	109	FNMA D N	3/16/2009	10/7/2009		0.625%	0.627%	500,000	498,220.49	138.89	494,697.50	(3,661.88)
132929	313385NH5	109	FHLB D N	1/15/2009	10/23/2009		0.600%	0.603%	3,511,000	3,494,556.81	4,447.27	3,470,613.75	(28,390.33)
133562	313589NW9	109	FNMA D N	2/26/2009	11/5/2009		0.900%	0.906%	200,000	198,740.00	170.00	197,553.56	(1,356.44)
132660	313589PH0	109	FNMA D N	1/2/2009	11/16/2009		0.770%	0.775%	15,000,000	14,897,975.00	28,554.17	14,807,258.33	(119,270.84)
133212	313385PL4	109	FHLB D N	2/4/2009	11/19/2009		0.950%	0.957%	200,000	198,480.00	295.56	197,396.44	(1,379.12)
133758	313589QE6	109	FNMA D N	3/5/2009	12/7/2009		0.745%	0.749%	318,000	316,177.11	177.68	313,627.50	(2,727.29)
132536	313385QF6	109	FHLB D N	12/23/2008	12/8/2009		0.808%	0.814%	2,610,000	2,589,497.00	5,799.42	2,573,968.95	(21,327.47)
132598	313385QF6	109	FHLB D N	12/29/2008	12/8/2009		0.800%	0.806%	4,114,000	4,082,550.76	8,502.27	4,057,206.23	(33,846.80)
132626	313385QU3	109	FHLB D N	12/30/2008	12/21/2009		0.770%	0.776%	349,100	346,441.80	686.95	344,031.07	(3,097.68)
134194	313397QX2	109	FHLMC D N	3/31/2009	12/24/2009		0.630%	0.633%	1,173,000	1,167,498.63	20.53	1,155,774.50	(11,744.67)
132893	313385RC2	109	FHLB D N	1/15/2009	12/29/2009		0.800%	0.806%	300,000	297,680.00	506.67	298,968.75	782.00
133210	313385RC2	109	FHLB D N	2/4/2009	12/29/2009		1.000%	1.009%	100,000	99,088.89	155.56	99,656.25	411.80
133100	313589RC9	109	FNMA D N	1/29/2009	12/29/2009		0.785%	0.791%	1,650,000	1,637,982.96	2,230.71	1,644,328.13	4,114.46
133930	313589RD7	109	FNMA D N	3/19/2009	12/30/2009		0.600%	0.603%	40,000,000	39,809,333.33	8,666.67	39,862,500.00	44,500.00
134068	313589RD7	109	FNMA D N	3/25/2009	12/30/2009		0.600%	0.603%	623,000	620,092.67	72.68	620,858.44	693.09
132630	313385RE8	109	FHLB D N	12/31/2008	12/31/2009		0.700%	0.705%	350,000	347,515.97	619.31	348,796.88	661.60
134103	313397RE3	109	FHLMC D N	3/30/2009	12/31/2009		0.630%	0.633%	15,000,000	14,927,550.00	525.00	14,948,437.50	20,362.50
134047	313589RE5	109	FNMA D N	3/26/2009	12/31/2009		0.610%	0.613%	20,000,000	19,905,111.11	2,033.33	19,931,250.00	24,105.56
134073	313589RE5	109	FNMA D N	3/27/2009	12/31/2009		0.620%	0.623%	15,000,000	14,927,925.00	1,291.67	14,948,437.50	19,220.83

**MIAMI-DADE COUNTY**  
**REPORT WRITER**  
**AS OF DATE: March 31, 2009**  
**SORTING ORDER: FUND ICC#**

INVSMT NUMBER	CUSIP NUMBER	FUND NUMBER	DESCRIPTION	PURCHASE SET DATE	MATURITY DATE	CALL DATE	INTEREST RATE	YTM TRADING	SCHEDULED PAR VALUE	CURRENT BOOK VALUE	PERIOD-END INTEREST ACCRL	MARKET VALUE	UNREALIZED GAIN/LOSS
133869	313385RJ7	109	FHLB D N	3/16/2009	1/4/2010		1.000%	1.008%	150,000	148,775.00	66.67	149,390.63	548.96
133989	313397RJ2	109	FHLMC D N	3/23/2009	1/4/2010		0.610%	0.613%	10,000,000	9,951,369.44	1,525.00	9,959,375.00	6,480.56
133883	313589RJ4	109	FNMA D N	3/13/2009	1/4/2010		0.830%	0.836%	477,750	474,478.60	209.28	475,809.14	1,121.26
133931	313589RJ4	109	FNMA D N	3/19/2009	1/4/2010		0.650%	0.653%	8,988,000	8,940,775.55	2,109.68	8,951,486.25	8,601.02
133976	313385RK4	109	FHLB D N	3/20/2009	1/5/2010		0.650%	0.653%	500,000	497,372.92	108.33	497,968.75	487.50
133992	313385RK4	109	FHLB D N	3/23/2009	1/5/2010		0.650%	0.653%	2,650,000	2,636,220.00	430.63	2,639,234.38	2,583.75
134100	313397SK8	109	FHLMC D N	3/30/2009	1/29/2010		0.660%	0.664%	1,800,000	1,789,935.00	66.00	1,792,125.00	2,124.00
134074	313385SN7	109	FHLB D N	3/27/2009	2/1/2010		0.800%	0.806%	5,000,000	4,965,444.44	555.56	4,976,562.50	10,562.50
134104	313385SN7	109	FHLB D N	3/30/2009	2/1/2010		0.700%	0.704%	5,000,000	4,970,055.56	194.44	4,976,562.50	6,312.50
134145	313385SN7	109	FHLB D N	3/30/2009	2/1/2010		0.700%	0.704%	1,558,000	1,548,669.31	60.59	1,550,696.88	1,966.98
133775	313589SN4	109	FNMA D N	3/10/2009	2/1/2010		0.920%	0.928%	1,000,000	991,617.78	562.22	995,312.50	3,132.50
134138	313385TL0	109	FHLB D N	3/27/2009	2/23/2010		0.750%	0.755%	2,232,000	2,216,515.50	232.50	2,220,142.50	3,394.50
133975	313385TP1	109	FHLB D N	3/20/2009	2/26/2010		0.750%	0.755%	5,000,000	4,964,270.83	1,250.00	4,973,437.50	7,916.67
133932	313589TS2	109	FNMA D N	3/19/2009	3/1/2010		0.700%	0.705%	2,002,000	1,988,492.06	506.06	1,990,738.75	1,740.63
127331	31398APJ5	109	FNMA BULLET	3/14/2008	3/10/2010		3.000%	3.000%	7,000,000	7,000,000.00	12,250.00	7,122,500.00	122,500.00
128535	31398ARK0	109	FNMA C I	5/21/2008	5/21/2010	5/21/2009	3.250%	3.250%	10,000,000	10,000,000.00	117,361.11	10,028,125.00	28,125.00
132323	31331GGS2	109	FFCB - BULLET	12/11/2008	6/11/2010		2.000%	2.000%	11,000,000	11,000,000.00	67,222.22	11,103,125.00	103,125.00
132324	31331GGS2	109	FFCB - BULLET	12/11/2008	6/11/2010		2.000%	2.000%	10,000,000	10,000,000.00	61,111.11	10,093,750.00	93,750.00
132325	31331GGS2	109	FFCB - BULLET	12/11/2008	6/11/2010		2.000%	2.000%	5,000,000	5,000,000.00	30,555.56	5,046,875.00	46,875.00
129494	31331Y2P4	109	FFCB - BULLET	7/7/2008	7/7/2010		3.300%	3.300%	4,350,000	4,350,000.00	33,495.00	4,468,265.63	118,265.63
132862	3136F93C5	109	FNMA STEP UP	1/13/2009	7/13/2010	4/13/2009	1.250%	1.250%	10,000,000	10,000,000.00	27,083.33	10,000,000.00	0.00
130741	31331GBC2	109	FFCB C I	9/15/2008	9/15/2010	9/15/2009	3.300%	3.300%	4,000,000	4,000,000.00	5,866.67	4,038,750.00	38,750.00
134097	3133XTF27	109	FHLB - BULLET	3/30/2009	9/30/2010		1.250%	1.250%	5,000,000	5,000,000.00	173.61	5,003,125.00	3,125.00
134108	3136FHHV0	109	FNMA - BULLET	3/30/2009	9/30/2010		1.200%	1.200%	20,000,000	20,000,000.00	666.67	20,000,000.00	0.00
134075	31331YGP9	109	FFCB - BULLET	3/27/2009	12/26/2010		3.750%	1.405%	20,000,000	21,037,850.00	239,583.33	20,793,750.00	(12,850.00)
132601	3128X8CD2	109	FHLMC C I	12/30/2008	12/30/2010	6/30/2009	2.125%	2.125%	5,000,000	5,000,000.00	26,857.64	5,006,250.00	6,250.00
129634	3136F9FW8	109	FNMA C I	4/14/2008	1/14/2011	4/14/2009	3.000%	3.077%	5,000,000	4,992,746.27	32,083.33	5,003,125.00	10,378.73
132876	3136F93G6	109	FNMA STEP UP	1/14/2009	1/14/2011	7/14/2009	1.250%	1.250%	20,000,000	20,000,000.00	53,472.22	20,006,250.00	6,250.00
133071	3136F93W1	109	FNMA STEP UP	1/28/2009	1/28/2011	4/28/2009	1.250%	1.255%	10,000,000	9,999,000.00	21,875.00	9,996,875.00	(2,125.00)
134048	3128X8HC9	109	FHLMC STEP UP	3/26/2009	2/18/2011	5/18/2009	1.500%	1.500%	8,000,000	8,012,666.67	14,333.34	8,005,000.00	5,000.00
134106	3128X8HC9	109	FHLMC STEP UP	3/30/2009	2/18/2011	5/18/2009	1.500%	1.500%	3,000,000	3,005,250.00	5,375.00	3,001,875.00	1,875.00
133535	3128X8LN0	109	FHLMC C I	2/25/2009	2/25/2011	2/25/2010	2.000%	2.000%	3,000,000	3,000,000.00	6,000.00	3,007,500.00	7,500.00
134076	31331GQF9	109	FFCB C I	3/27/2009	3/23/2011	3/23/2010	1.850%	1.850%	1,000,000	1,000,205.56	411.12	999,062.50	(937.50)
134105	3136FHHW8	109	FNMA - BULLET	3/30/2009	3/30/2011		1.600%	1.600%	10,000,000	10,000,000.00	444.44	10,034,375.00	34,375.00
132739	3136F92H5	109	FNMA C I	1/6/2009	7/6/2011	7/6/2009	2.000%	2.021%	12,000,000	11,994,000.00	56,666.67	11,947,500.00	(46,500.00)
133984	3136FHDD4	109	FNMA C I	3/23/2009	9/23/2011	3/23/2010	2.200%	2.200%	5,000,000	5,000,000.00	2,444.44	5,001,562.50	1,562.50
131348	31331GDE6	109	FFCB C I	10/14/2008	10/14/2011	10/14/2009	3.700%	3.707%	5,000,000	4,999,000.00	85,819.44	5,054,687.50	55,687.50
131430	3128X72L7	109	FHLMC C I	10/21/2008	10/21/2011	4/21/2009	4.150%	4.150%	10,000,000	10,000,000.00	184,444.44	10,012,500.00	12,500.00
133972	31331GHW2	109	FFCB C I	3/20/2009	12/30/2011	4/10/2009	2.375%	2.375%	4,000,000	4,021,111.11	24,013.89	3,988,750.00	(11,250.00)
133257	31331GKY4	109	FFCB - BULLET	2/5/2009	1/17/2012		2.000%	2.220%	10,000,000	9,948,014.91	41,666.66	10,025,000.00	87,540.64
133011	3133XSWM6	109	FHLB - BULLET	1/23/2009	1/23/2012		2.100%	2.100%	3,000,000	3,000,000.00	11,900.00	2,988,750.00	(11,250.00)
133262	3136FHAB1	109	FNMA STEP UP	2/6/2009	2/6/2012	5/6/2009	2.000%	2.000%	12,000,000	12,000,000.00	36,666.67	12,007,500.00	7,500.00
133370	3136FHAQ8	109	FNMA STEP UP	2/17/2009	2/17/2012	2/17/2010	2.000%	2.000%	15,000,000	15,000,000.00	36,666.67	15,051,562.50	51,562.50
134107	3128X8TB8	109	FHLMC C I	3/30/2009	3/30/2012	3/30/2010	2.125%	2.125%	20,000,000	20,000,000.00	1,180.56	20,075,000.00	75,000.00
133536	31331NGG0	109	FFCB C I	2/25/2009	2/25/2013	2/25/2010	3.000%	3.000%	5,000,000	5,000,000.00	15,000.00	5,007,812.50	7,812.50
134044	31331GRG6	109	FFCB - BULLET	3/26/2009	3/26/2013		2.500%	2.511%	10,000,000	9,996,000.00	3,472.22	9,990,625.00	(5,375.00)
		<b>109 Total</b>							<b>860,083,360</b>	<b>857,245,288.58</b>	<b>4,011,519.14</b>	<b>859,202,731.16</b>	<b>118,959.58</b>
132983	912795N23	117	TREASURY BILLS	1/22/2009	7/16/2009		0.265%	0.265%	547,000	546,295.36	277.83	546,658.13	84.94
134003	912795N23	117	TREASURY BILLS	3/24/2009	7/16/2009		0.220%	0.220%	626,000	625,563.89	30.60	625,608.75	14.26
		<b>117 Total</b>							<b>1,173,000</b>	<b>1,171,859.25</b>	<b>308.43</b>	<b>1,172,266.88</b>	<b>99.20</b>
132984	912795N23	119	TREASURY BILLS	1/22/2009	7/16/2009		0.265%	0.265%	980,000	978,737.57	497.76	979,387.50	152.17
		<b>119 Total</b>							<b>980,000</b>	<b>978,737.57</b>	<b>497.76</b>	<b>979,387.50</b>	<b>152.17</b>
131394	912795L41	123	TREASURY BILLS	10/16/2008	4/16/2009		0.960%	0.965%	1,206,000	1,200,146.88	5,370.72	1,206,000.00	482.40
		<b>123 Total</b>							<b>1,206,000</b>	<b>1,200,146.88</b>	<b>5,370.72</b>	<b>1,206,000.00</b>	<b>482.40</b>

**MIAMI-DADE COUNTY**  
**REPORT WRITER**  
**AS OF DATE: March 31, 2009**  
**SORTING ORDER: FUND ICC#**

INVSMT NUMBER	CUSIP NUMBER	FUND NUMBER	DESCRIPTION	PURCHASE SET DATE	MATURITY DATE	CALL DATE	INTEREST RATE	YTM TRADING	SCHEDULED PAR VALUE	CURRENT BOOK VALUE	PERIOD-END INTEREST ACCRL	MARKET VALUE	UNREALIZED GAIN/LOSS
128982	313589FA6	154	FNMA D N	6/13/2008	5/1/2009		2.800%	2.872%	7,209,000	7,028,454.60	163,724.40	7,199,388.00	7,209.00
		<b>154 Total</b>							<b>7,209,000</b>	<b>7,028,454.60</b>	<b>163,724.40</b>	<b>7,199,388.00</b>	<b>7,209.00</b>
134235	GOVTMMKT7	300	GOVT MONEY MARKET	3/1/2009	4/1/2009		0.262%	0.262%	3,502,134	3,502,133.67	791.40	3,502,133.67	0.00
134236	GOVTMMKT7	300	GOVT MONEY MARKET	3/18/2009	4/1/2009		0.262%	0.262%	2,000,000	2,000,000.00	204.11	2,000,000.00	0.00
131411	313385DU7	300	FHLB D N	10/17/2008	4/1/2009		3.050%	3.094%	1,500,000	1,478,904.17	21,095.83	1,500,000.00	0.00
132206	313589DU4	300	FNMA D N	12/3/2008	4/1/2009		0.900%	0.903%	510,000	508,482.75	1,517.25	510,000.00	0.00
133501	313385DV5	300	FHLB D N	2/23/2009	4/2/2009		0.330%	0.330%	775,000	774,730.04	262.86	774,965.56	(27.34)
133606	313385DZ6	300	FHLB D N	3/2/2009	4/6/2009		0.300%	0.300%	500,000	499,854.17	125.00	499,888.89	(90.28)
133143	313397DZ1	300	FHLMC D N	2/2/2009	4/6/2009		0.350%	0.350%	800,000	799,510.00	451.11	799,822.22	(138.89)
132673	313589ED1	300	FNMA D N	1/2/2009	4/10/2009		0.300%	0.300%	181,000	180,852.18	134.24	180,927.60	(58.82)
132672	313385EG7	300	FHLB D N	1/2/2009	4/13/2009		0.250%	0.250%	150,000	149,894.79	92.71	149,920.00	(67.50)
132604	313397EG2	300	FHLMC D N	12/30/2008	4/13/2009		0.250%	0.250%	704,000	703,491.56	449.77	703,624.53	(316.80)
133607	313397EG2	300	FHLMC D N	3/2/2009	4/13/2009		0.300%	0.300%	3,000,000	2,998,950.00	750.00	2,998,400.00	(1,300.00)
132176	313589EJ8	300	FNMA D N	12/2/2008	4/15/2009		1.100%	1.105%	1,190,000	1,185,127.61	4,363.33	1,189,259.56	(231.38)
132208	313397EL1	300	FHLMC D N	12/3/2008	4/17/2009		1.000%	1.004%	1,500,000	1,494,375.00	4,958.33	1,498,933.33	(400.00)
133608	313397EL1	300	FHLMC D N	3/2/2009	4/17/2009		0.290%	0.290%	2,000,000	1,999,258.89	483.33	1,998,577.78	(1,164.44)
132668	313589EL3	300	FNMA D N	1/2/2009	4/17/2009		0.300%	0.300%	315,000	314,724.38	233.62	314,776.00	(182.00)
132201	313385EP7	300	FHLB D N	12/3/2008	4/20/2009		0.980%	0.984%	350,000	348,685.17	1,133.80	349,704.44	(114.53)
132678	313385EP7	300	FHLB D N	1/2/2009	4/20/2009		0.230%	0.230%	658,000	657,545.98	374.15	657,444.36	(475.77)
133145	313397EQ0	300	FHLMC D N	2/2/2009	4/21/2009		0.350%	0.350%	860,000	859,347.83	484.95	859,235.56	(597.22)
133146	313589EY5	300	FNMA D N	2/2/2009	4/29/2009		0.320%	0.320%	1,200,000	1,199,082.67	618.66	1,198,506.67	(1,194.66)
132635	313385EZ5	300	FHLB D N	12/31/2008	4/30/2009		0.400%	0.401%	205,000	204,726.67	207.28	204,735.78	(198.17)
133144	313589EZ2	300	FNMA D N	2/2/2009	4/30/2009		0.400%	0.400%	330,000	329,681.00	212.67	329,574.67	(319.00)
132175	313385FD3	300	FHLB D N	12/2/2008	5/4/2009		1.150%	1.156%	500,000	497,556.25	1,916.67	499,266.67	(206.25)
133551	313385FE1	300	FHLB D N	2/25/2009	5/5/2009		0.350%	0.350%	1,500,000	1,498,993.75	510.42	1,497,733.33	(1,770.84)
133555	313385FQ4	300	FHLB D N	2/25/2009	5/15/2009		0.400%	0.400%	302,000	301,734.91	117.44	301,409.42	(442.93)
134163	313385FT8	300	FHLB D N	3/31/2009	5/18/2009		0.200%	0.200%	750,000	749,800.00	4.17	748,433.33	(1,370.84)
133609	313385GE0	300	FHLB D N	3/2/2009	5/29/2009		0.380%	0.380%	1,500,000	1,498,606.67	475.00	1,496,133.33	(2,948.34)
133553	313589GE7	300	FNMA D N	2/25/2009	5/29/2009		0.450%	0.451%	280,000	279,674.50	122.50	279,278.22	(518.78)
134162	313385GJ9	300	FHLB D N	3/31/2009	6/2/2009		0.250%	0.250%	300,000	299,868.75	2.08	299,018.33	(852.50)
133610	313397GZ8	300	FHLMC D N	3/2/2009	6/17/2009		0.420%	0.421%	2,002,000	1,999,500.84	700.70	1,993,864.09	(6,337.45)
133611	313589GZ0	300	FNMA D N	3/2/2009	6/17/2009		0.400%	0.400%	2,000,000	1,997,622.22	666.67	1,991,872.22	(6,416.67)
133563	313589HA4	300	FNMA D N	2/26/2009	6/18/2009		0.500%	0.501%	675,000	673,950.00	318.75	672,221.25	(2,047.50)
133554	313397HU8	300	FHLMC D N	2/25/2009	7/6/2009		0.470%	0.471%	325,000	324,444.16	148.51	323,266.67	(1,326.00)
133552	313589HU0	300	FNMA D N	2/25/2009	7/6/2009		0.530%	0.531%	250,000	249,517.85	128.82	248,666.67	(980.00)
133612	313397JJ1	300	FHLMC D N	3/2/2009	7/20/2009		0.500%	0.501%	700,000	698,638.89	291.67	695,722.22	(3,208.34)
133979	313589KA0	300	FNMA D N	3/20/2009	8/5/2009		0.380%	0.381%	500,000	499,271.67	63.33	496,465.00	(2,870.00)
132342	313589KC6	300	FNMA D N	12/11/2008	8/7/2009		1.720%	1.740%	45,000	44,486.15	238.65	44,676.80	(48.00)
133980	313385LU8	300	FHLB D N	3/20/2009	9/16/2009		0.460%	0.461%	400,000	399,080.00	61.33	396,210.67	(2,930.66)
133613	313589MD2	300	FNMA D N	3/2/2009	9/25/2009		0.620%	0.622%	2,000,000	1,992,870.00	1,033.33	1,980,038.33	(13,865.00)
132554	3128X8BP6	300	FHLMC C I	12/23/2008	12/23/2009	6/23/2009	1.200%	1.200%	1,500,000	1,500,000.00	4,900.00	1,501,406.25	1,406.25
132863	3136F93C5	300	FNMA STEP UP	1/13/2009	7/13/2010	4/13/2009	1.250%	1.250%	1,500,000	1,500,000.00	4,062.50	1,500,000.00	0.00
133583	3128X8MP4	300	FHLMC C I	2/27/2009	8/27/2010	5/27/2009	1.625%	1.625%	2,000,000	2,000,000.00	3,069.44	2,002,500.00	2,500.00
134142	3136FHHV0	300	FNMA - BULLET	3/30/2009	9/30/2010		1.200%	1.200%	2,000,000	2,000,000.00	66.67	2,000,000.00	0.00
132877	3136F93G6	300	FNMA STEP UP	1/14/2009	1/14/2011	7/14/2009	1.250%	1.250%	1,000,000	1,000,000.00	2,673.61	1,000,312.50	312.50
133077	3136F93W1	300	FNMA STEP UP	1/28/2009	1/28/2011	4/28/2009	1.250%	1.255%	1,000,000	999,900.00	2,187.50	999,687.50	(212.50)
133430	3128X8JU7	300	FHLMC C I	2/18/2009	2/18/2011	2/18/2010	2.000%	2.000%	1,000,000	1,000,000.00	2,388.89	1,004,062.50	4,062.50
134049	3128X8HC9	300	FHLMC STEP UP	3/26/2009	2/18/2011	5/18/2009	1.500%	1.500%	1,000,000	1,001,583.33	1,791.66	1,000,625.00	625.00
133263	3136FHAB1	300	FNMA STEP UP	2/6/2009	2/6/2012	5/6/2009	2.000%	2.000%	1,000,000	1,000,000.00	3,055.56	1,000,625.00	625.00
		<b>300 Total</b>							<b>48,259,134</b>	<b>48,196,458.47</b>	<b>69,940.27</b>	<b>48,193,925.92</b>	<b>(45,698.15)</b>
131398	313385DU7	411	FHLB D N	10/16/2008	4/1/2009		3.050%	3.094%	5,000,000	4,929,256.94	70,743.06	5,000,000.00	0.00
131399	313385DU7	411	FHLB D N	10/16/2008	4/1/2009		2.700%	2.734%	6,000,000	5,924,850.00	75,150.00	6,000,000.00	0.00
122148	31331XVG4	411	FFCB BULLET	5/25/2007	4/13/2009		4.875%	5.080%	10,000,000	9,990,280.12	227,500.00	10,015,625.00	25,344.88
130465	313385EH5	411	FHLB D N	8/29/2008	4/14/2009		2.850%	2.902%	5,000,000	4,909,750.00	85,104.17	4,997,111.11	2,256.94

**MIAMI-DADE COUNTY**  
**REPORT WRITER**  
**AS OF DATE: March 31, 2009**  
**SORTING ORDER: FUND ICC#**

INVSMT NUMBER	CUSIP NUMBER	FUND NUMBER	DESCRIPTION	PURCHASE SET DATE	MATURITY DATE	CALL DATE	INTEREST RATE	YTM TRADING	SCHEDULED PAR VALUE	CURRENT BOOK VALUE	PERIOD-END INTEREST ACCRL	MARKET VALUE	UNREALIZED GAIN/LOSS
128022	3133XQV66	411	FHLB BULLET	4/25/2008	4/21/2009		2.520%	2.727%	5,000,000	4,994,986.15	56,000.00	5,006,250.00	11,263.85
133582	313589FM0	411	FNMA D N	2/27/2009	5/12/2009		0.320%	0.320%	6,000,000	5,996,053.33	1,760.00	5,989,066.67	(8,746.66)
132793	313385GE0	411	FHLB D N	1/8/2009	5/29/2009		0.320%	0.320%	2,100,000	2,097,368.00	1,549.33	2,094,586.67	(4,330.66)
128978	912795Q79	411	TREASURY BILLS	6/13/2008	6/4/2009		2.465%	2.527%	10,000,000	9,756,238.89	199,938.89	9,996,875.00	40,697.22
129688	313313GQ5	411	FFCB D N	7/16/2008	6/8/2009		2.730%	2.799%	1,300,000	1,267,763.25	25,533.08	1,295,334.44	2,038.11
128877	3133XRHF0	411	FHLB - BULLET	6/10/2008	6/10/2009		2.730%	2.730%	10,000,000	10,000,000.00	84,175.00	10,043,750.00	43,750.00
132792	313385GX8	411	FHLB D N	1/8/2009	6/15/2009		0.350%	0.351%	3,000,000	2,995,391.67	2,420.83	2,988,125.00	(9,687.50)
130855	313313GY8	411	FFCB D N	9/18/2008	6/16/2009		2.450%	2.496%	500,000	490,778.47	6,635.42	497,994.44	580.55
129127	3133XRP46	411	FHLB - BULLET	6/23/2008	6/23/2009		3.000%	3.059%	10,000,000	9,997,153.59	81,666.67	10,056,250.00	59,096.41
132794	313385HP4	411	FHLB D N	1/8/2009	7/1/2009		0.420%	0.421%	1,900,000	1,896,143.00	1,839.83	1,890,394.44	(7,588.39)
129811	912795Q87	411	TREASURY BILLS	7/23/2008	7/2/2009		2.230%	2.279%	10,000,000	9,786,911.11	156,100.00	9,993,750.00	50,738.89
132638	313385JN7	411	FHLB D N	12/31/2008	7/24/2009		0.500%	0.501%	500,000	498,576.39	631.94	496,833.33	(2,375.00)
132632	313397JS1	411	FHLMC D N	12/31/2008	7/28/2009		0.440%	0.441%	15,000,000	14,961,683.33	16,683.33	14,901,666.67	(76,699.99)
129969	912795Q95	411	TREASURY BILLS	7/31/2008	7/30/2009		2.300%	2.355%	10,000,000	9,767,444.44	155,888.89	9,990,625.00	91,677.67
132789	313397KF7	411	FHLMC D N	1/8/2009	8/10/2009		0.450%	0.451%	10,000,000	9,973,250.00	10,375.00	9,926,494.44	(57,130.56)
133360	313385KK1	411	FHLB D N	2/13/2009	8/14/2009		0.580%	0.582%	175,000	174,486.86	132.51	173,674.38	(945.00)
133361	313385KN5	411	FHLB D N	2/13/2009	8/17/2009		0.580%	0.582%	175,000	174,478.40	132.51	173,644.92	(965.99)
130963	912795S28	411	TREASURY BILLS	9/24/2008	8/27/2009		1.910%	1.945%	10,000,000	9,821,202.78	100,275.00	9,987,500.00	66,022.22
132986	313397LD1	411	FHLMC D N	1/22/2009	9/1/2009		0.600%	0.602%	2,300,000	2,291,490.00	2,645.00	2,280,156.75	(13,978.25)
132808	313385LF1	411	FHLB D N	1/9/2009	9/3/2009		0.600%	0.602%	8,000,000	7,968,400.00	10,933.33	7,930,077.78	(49,255.55)
133581	313397MB4	411	FHLMC D N	2/27/2009	9/23/2009		0.630%	0.632%	5,000,000	4,881,800.00	2,887.50	4,950,659.72	(34,027.78)
132791	313589MD2	411	FNMA D N	1/8/2009	9/25/2009		0.526%	0.528%	5,000,000	4,981,005.56	6,063.61	4,950,095.83	(36,973.34)
132633	313397MJ7	411	FHLMC D N	12/31/2008	9/30/2009		0.650%	0.653%	8,000,000	7,960,566.67	13,144.44	7,918,302.22	(55,408.89)
132788	313397MJ7	411	FHLB D N	1/8/2009	9/30/2009		0.570%	0.572%	10,500,000	10,455,943.75	13,798.75	10,392,771.67	(76,970.83)
132931	313589MJ9	411	FNMA D N	1/20/2009	9/30/2009		0.520%	0.522%	10,000,000	9,963,455.56	10,255.55	9,897,877.78	(75,833.33)
132790	313589MK6	411	FNMA D N	1/8/2009	10/1/2009		0.550%	0.552%	5,000,000	4,979,680.56	6,340.28	4,948,658.33	(37,362.51)
132634	313385QP4	411	FHLB D N	12/31/2008	12/16/2009		0.800%	0.806%	2,000,000	1,984,444.44	4,044.45	1,971,510.00	(16,978.89)
132919	313397QU8	411	FHLMC D N	1/16/2009	12/21/2009		0.700%	0.705%	10,000,000	9,934,083.33	14,583.33	9,854,800.00	(93,866.66)
133486	313397QU8	411	FHLMC D N	2/23/2009	12/21/2009		0.850%	0.856%	800,000	794,314.44	698.89	788,384.00	(6,629.33)
133026	313385SB3	411	FHLB D N	1/23/2009	1/21/2010		0.900%	0.908%	2,150,000	2,130,488.75	3,655.00	2,140,593.75	6,450.00
130258	31331Y6H8	411	FFCB - BULLET	8/18/2008	2/18/2010		3.150%	3.150%	10,000,000	10,000,000.00	37,625.00	10,187,500.00	187,500.00
127265	31398APK2	411	FNMA BULLET	3/12/2008	3/5/2010		3.050%	3.050%	8,115,000	8,115,000.00	17,875.53	8,259,548.44	144,548.44
128109	3136F9MU4	411	FNMA C I	4/30/2008	4/30/2010	4/30/2009	3.000%	3.000%	5,000,000	5,000,000.00	62,916.67	5,007,812.50	7,812.50
132326	31331GGS2	411	FFCB - BULLET	12/11/2008	6/11/2010		2.000%	2.000%	5,000,000	5,000,000.00	30,555.56	5,046,875.00	46,875.00
132327	31331GGS2	411	FFCB - BULLET	12/11/2008	6/11/2010		2.000%	2.000%	5,000,000	5,000,000.00	30,555.56	5,046,875.00	46,875.00
132328	31331GGS2	411	FFCB - BULLET	12/11/2008	6/11/2010		2.000%	2.000%	4,800,000	4,800,000.00	29,333.33	4,845,000.00	45,000.00
129011	31398ASH6	411	FNMA C I	6/16/2008	6/16/2010	6/16/2009	3.550%	3.550%	5,000,000	5,000,000.00	51,770.83	5,028,125.00	28,125.00
129481	3133XRN30	411	FHLB C I	7/7/2008	7/7/2010	7/7/2009	4.000%	4.000%	6,600,000	6,600,000.00	61,600.00	6,649,500.00	49,500.00
129480	31331Y2P4	411	FFCB - BULLET	7/7/2008	7/7/2010		3.300%	3.300%	5,000,000	5,000,000.00	38,500.00	5,135,937.50	135,937.50
130715	31331GAE9	411	FFCB - BULLET	9/12/2008	9/2/2010		3.200%	3.200%	10,000,000	10,000,000.00	25,777.78	10,259,375.00	259,375.00
130746	31331GBC2	411	FFCB C I	9/15/2008	9/15/2010	9/15/2009	3.300%	3.300%	8,500,000	8,500,000.00	12,466.67	8,582,343.75	82,343.75
131093	912828JL5	411	TREASURY NOTES	9/30/2008	9/30/2010		2.000%	2.085%	5,000,000	4,993,853.28	273.22	5,100,000.00	106,146.72
134143	3136FHHV0	411	FNMA - BULLET	3/30/2009	9/30/2010		1.200%	1.200%	5,000,000	5,000,000.00	166.67	5,000,000.00	0.00
132741	3133XSQP6	411	FHLB C I	1/6/2009	1/6/2011	7/6/2009	2.375%	2.375%	1,800,000	1,800,000.00	10,093.75	1,806,187.50	6,187.50
133072	3136F93W1	411	FNMA STEP UP	1/28/2009	1/28/2011	4/28/2009	1.250%	1.275%	3,310,000	3,308,345.00	7,240.63	3,308,965.63	620.63
133073	3136F93W1	411	FNMA STEP UP	1/28/2009	1/28/2011	4/28/2009	1.250%	1.255%	3,000,000	2,999,700.00	6,562.50	2,999,062.50	(637.50)
134046	3128X8HC9	411	FHLMC STEP UP	3/26/2009	2/18/2011	5/18/2009	1.500%	1.500%	5,000,000	5,007,916.67	8,958.34	5,003,125.00	3,125.00
133538	3128X8LN0	411	FHLMC C I	2/25/2009	2/25/2011	2/25/2010	2.000%	2.000%	2,000,000	2,000,000.00	4,000.00	2,005,000.00	5,000.00
130856	31331Y5T3	411	FFCB C I	9/18/2008	8/11/2011	8/11/2009	4.000%	4.000%	5,000,000	5,000,000.00	27,777.78	5,050,000.00	50,000.00
133985	3136FHER2	411	FNMA C I	3/23/2009	9/23/2011	3/23/2010	2.150%	2.150%	5,000,000	5,000,000.00	2,388.89	4,985,937.50	(14,062.50)
133986	3136FHDU6	411	FNMA C I	3/23/2009	9/23/2011	3/23/2010	2.100%	2.100%	2,825,000	2,825,000.00	1,318.33	2,820,585.94	(4,414.06)
131349	31331GDE6	411	FFCB C I	10/14/2008	10/14/2011	10/14/2009	3.700%	3.707%	5,000,000	4,999,000.00	85,819.44	5,054,687.50	55,687.50
133230	31331GKY4	411	FFCB - BULLET	2/5/2009	1/17/2012		2.000%	2.220%	5,000,000	4,974,007.46	20,833.34	5,012,500.00	43,770.32
133012	3133XSWM6	411	FHLB - BULLET	1/23/2009	1/23/2012		2.100%	2.100%	5,000,000	5,000,000.00	19,833.33	4,981,250.00	(18,750.00)

**MIAMI-DADE COUNTY**  
**REPORT WRITER**  
**AS OF DATE: March 31, 2009**  
**SORTING ORDER: FUND ICC#**

INVSMT NUMBER	CUSIP NUMBER	FUND NUMBER	DESCRIPTION	PURCHASE SET DATE	MATURITY DATE	CALL DATE	INTEREST RATE	YTM TRADING	SCHEDULED PAR VALUE	CURRENT BOOK VALUE	PERIOD-END INTEREST ACCL	MARKET VALUE	UNREALIZED GAIN/LOSS
133264	3136FHAB1	411	FNMA STEP UP	2/6/2009	2/6/2012	5/6/2009	2.000%	2.000%	5,000,000	5,000,000.00	15,277.78	5,003,125.00	3,125.00
133371	3136FHAQ8	411	FNMA STEP UP	2/17/2009	2/17/2012	2/17/2010	2.000%	2.000%	6,525,000	6,525,000.00	15,950.00	6,547,429.69	22,429.69
133006	3133XSV62	411	FHLB C I	1/22/2009	1/22/2013	7/22/2009	2.625%	2.629%	2,000,000	1,999,700.00	10,062.50	2,001,875.00	2,175.00
133537	31331GNG0	411	FFCB C I	2/25/2009	2/25/2013	2/25/2010	3.000%	3.000%	5,000,000	5,000,000.00	15,000.00	5,007,812.50	7,812.50
134050	31331GRG6	411	FFCB - BULLET	3/26/2009	3/26/2013		2.500%	2.511%	5,000,000	4,998,000.00	1,736.11	4,995,312.50	(2,687.50)
133440	3128XJM5	411	FHLMC STEP UP	2/19/2009	2/19/2014	5/19/2009	2.250%	2.271%	2,000,000	1,998,000.00	5,250.00	2,003,125.00	5,125.00
		<b>411 Total</b>							<b>351,875,000</b>	<b>350,273,242.19</b>	<b>2,106,805.13</b>	<b>352,274,312.79</b>	<b>1,014,321.12</b>
131201	313385DU7	414	FHLB D N	10/1/2008	4/1/2009		3.150%	3.201%	1,073,643	1,056,545.24	17,097.76	1,073,643.00	0.00
131202	313385DU7	414	FHLB D N	10/1/2008	4/1/2009		3.150%	3.201%	953,438	938,254.50	15,183.50	953,438.00	0.00
131203	313385DU7	414	FHLB D N	10/1/2008	4/1/2009		3.150%	3.201%	377,919	371,900.64	6,018.36	377,919.00	0.00
131382	313589EJ8	414	FNMA D N	10/15/2008	4/15/2009		2.600%	2.635%	169,000	166,778.59	2,050.53	168,894.84	65.72
132138	313589GC1	414	FNMA D N	12/1/2008	5/27/2009		1.130%	1.136%	853,853	849,109.14	3,242.98	851,727.85	(624.27)
132139	313589GC1	414	FNMA D N	12/1/2008	5/27/2009		1.130%	1.136%	928,147	922,990.37	3,525.15	925,836.95	(678.57)
132636	313385GR1	414	FHLB D N	12/31/2008	6/9/2009		0.500%	0.501%	600,000	598,666.67	758.33	597,815.00	(1,610.00)
132384	313385GX8	414	FHLB D N	12/15/2008	6/15/2009		0.250%	0.250%	100,151	100,024.42	74.42	99,754.57	(344.27)
132385	313385GX8	414	FHLB D N	12/15/2008	6/15/2009		0.250%	0.250%	811,838	810,811.93	603.24	808,624.47	(2,790.70)
132386	313385GX8	414	FHLB D N	12/15/2008	6/15/2009		0.250%	0.250%	32,688	32,586.76	24.25	32,498.85	(112.16)
132387	313385GX8	414	FHLB D N	12/15/2008	6/15/2009		0.250%	0.250%	94,498	94,378.57	70.21	94,123.95	(324.83)
132388	313385GX8	414	FHLB D N	12/15/2008	6/15/2009		0.250%	0.250%	1,413,789	1,412,002.12	1,050.53	1,408,192.75	(4,859.90)
132389	313385GX8	414	FHLB D N	12/15/2008	6/15/2009		0.250%	0.250%	97,376	97,252.93	72.35	96,990.55	(334.73)
132390	313385GX8	414	FHLB D N	12/15/2008	6/15/2009		0.250%	0.250%	797,975	796,966.45	592.94	794,816.35	(2,743.04)
132391	313385GX8	414	FHLB D N	12/15/2008	6/15/2009		0.250%	0.250%	495,231	494,605.08	367.99	493,270.71	(1,702.36)
132392	313385GX8	414	FHLB D N	12/15/2008	6/15/2009		0.250%	0.250%	375,797	375,322.03	279.24	374,309.47	(1,291.80)
132393	313385GX8	414	FHLB D N	12/15/2008	6/15/2009		0.250%	0.250%	219,406	219,128.70	163.03	218,537.52	(754.21)
132394	313385GX8	414	FHLB D N	12/15/2008	6/15/2009		0.250%	0.250%	201,826	201,570.91	149.97	201,027.11	(693.77)
132416	313385GX8	414	FHLB D N	12/15/2008	6/15/2009		0.250%	0.250%	124,619	124,461.50	92.60	124,125.72	(428.38)
132417	313385GX8	414	FHLB D N	12/15/2008	6/15/2009		0.250%	0.250%	164,866	164,657.63	122.50	164,213.41	(566.72)
132656	313385GX8	414	FHLB D N	12/31/2008	6/15/2009		0.500%	0.501%	100,000	99,769.44	126.39	99,604.17	(291.66)
132777	313385HN9	414	FHLB D N	1/7/2009	6/30/2009		0.390%	0.391%	1,262,000	1,259,621.13	1,148.42	1,255,690.00	(5,079.55)
133362	313385KK1	414	FHLB D N	2/13/2009	8/14/2009		0.580%	0.582%	175,253	174,739.12	132.71	173,925.46	(946.37)
133363	313385KK1	414	FHLB D N	2/13/2009	8/14/2009		0.580%	0.582%	28,747	28,662.71	21.77	28,529.24	(155.24)
133844	313397LT6	414	FHLB D N	3/13/2009	9/15/2009		0.580%	0.582%	213,821	213,180.25	65.45	211,807.46	(1,438.24)
133845	313397LT6	414	FHLB D N	3/13/2009	9/15/2009		0.580%	0.582%	161,179	160,696.00	49.34	159,661.19	(1,084.15)
		<b>414 Total</b>							<b>11,827,000</b>	<b>11,764,682.83</b>	<b>53,083.96</b>	<b>11,788,977.59</b>	<b>(28,789.20)</b>
133231	REPO 14	500	REPO CHALKS AIRL VS	2/5/2009	8/14/2009		0.200%	0.200%	2,675	2,675.00	0.82	2,675.00	0.00
133441	REPO 14	500	REPO Chalks Airlines	2/18/2009	8/14/2009		0.200%	0.200%	2,675	2,675.00	0.62	2,675.00	0.00
130684	REPO 14	500	REPO Chalks Airline v	9/9/2008	9/16/2009		1.825%	1.825%	2,675	2,675.00	27.66	2,675.00	0.00
130775	REPO 14	500	REPO MTGE ELECTRONIC	8/17/2005	9/16/2009		1.495%	1.495%	71,657	71,657.36	3,936.94	71,657.36	0.00
130776	REPO 14	500	REPO PEDRO PONS DECE	7/13/1998	9/16/2009		1.495%	1.495%	10,490	10,490.41	1,705.54	10,490.41	0.00
130777	REPO 14	500	REPO SOHOTALK VS GRA	8/26/1999	9/16/2009		1.495%	1.495%	5,000	5,000.00	727.98	5,000.00	0.00
130829	REPO 14	500	REPO Hilaire Bass vs	5/27/2008	9/16/2009		1.495%	1.495%	248,761	248,761.10	3,192.12	248,761.10	0.00
130836	REPO 14	500	REPO Chalks Air vs M	6/26/2008	9/16/2009		1.495%	1.495%	10,700	10,700.00	123.97	10,700.00	0.00
130837	REPO 14	500	REPO Chalks Air vs M	8/14/2008	9/16/2009		1.495%	1.495%	2,675	2,675.00	25.55	2,675.00	0.00
131235	REPO 14	500	REPO Chalks Air vs M	10/3/2008	9/16/2009		1.495%	1.495%	2,675	2,675.00	20.00	2,675.00	0.00
131675	REPO 14	500	REPO Chalks Airline v	11/6/2008	9/16/2009		1.009%	1.009%	2,675	2,675.00	10.95	2,675.00	0.00
132269	REPO 14	500	REPO Chalks Air vs M	12/4/2008	9/16/2009		0.200%	0.200%	2,675	2,675.00	1.75	2,675.00	0.00
132272	REPO 14	500	REPO Chalks Air vs M	12/5/2008	9/16/2009		0.200%	0.200%	13,375	13,375.00	8.69	13,375.00	0.00
133815	REPO 14	500	REPO Chalks Airlines	3/12/2009	9/16/2009		0.200%	0.200%	2,675	2,675.00	0.30	2,675.00	0.00
		<b>500 Total</b>							<b>381,384</b>	<b>381,383.87</b>	<b>9,782.89</b>	<b>381,383.87</b>	<b>0.00</b>
133923	313589ER0	511	FNMA D N	3/19/2009	4/22/2009		0.140%	0.140%	950,000	949,874.39	48.03	949,113.33	(809.09)
133922	313385ET9	511	FHLB D N	3/19/2009	4/24/2009		0.200%	0.200%	450,000	449,910.00	32.50	449,540.00	(402.50)
130839	313313KZ0	511	FFCB D N	9/17/2008	8/28/2009		2.420%	2.477%	600,000	586,085.00	7,905.33	594,983.67	993.34
		<b>511 Total</b>							<b>2,000,000</b>	<b>1,985,869.39</b>	<b>7,985.86</b>	<b>1,993,637.00</b>	<b>(218.25)</b>
133102	313385JT4	522	FHLB D N	1/29/2009	7/29/2009		0.540%	0.541%	700,000	698,099.50	651.00	695,372.22	(3,378.28)

**MIAMI-DADE COUNTY**  
**REPORT WRITER**  
**AS OF DATE: March 31, 2009**  
**SORTING ORDER: FUND ICC#**

INVSMT NUMBER	CUSIP NUMBER	FUND NUMBER	DESCRIPTION	PURCHASE SET DATE	MATURITY DATE	CALL DATE	INTEREST RATE	YTM TRADING	SCHEDULED PAR VALUE	CURRENT BOOK VALUE	PERIOD-END INTEREST ACCRL	MARKET VALUE	UNREALIZED GAIN/LOSS
<b>522 Total</b>									<b>700,000</b>	<b>698,099.50</b>	<b>651.00</b>	<b>695,372.22</b>	<b>(3,378.28)</b>
133861	313589DW0	555	FNMA D N	3/13/2009	4/3/2009		0.230%	0.230%	300,000	299,959.75	36.42	299,973.33	(22.84)
133471	313385DZ6	555	FHLB D N	2/20/2009	4/6/2009		0.350%	0.350%	650,000	649,715.63	252.77	649,855.56	(112.84)
133816	313397EC1	555	FHLMC D N	3/12/2009	4/9/2009		0.200%	0.200%	700,000	699,891.11	77.78	699,751.11	(217.78)
133765	313589EJ8	555	FNMA D N	3/9/2009	4/15/2009		0.220%	0.220%	546,000	545,876.54	76.75	545,660.27	(293.02)
133796	313397EL1	555	FHLMC D N	3/10/2009	4/17/2009		0.220%	0.220%	900,000	899,791.00	121.00	899,360.00	(552.00)
133764	313397EP2	555	FHLMC D N	3/9/2009	4/20/2009		0.250%	0.250%	600,000	599,825.00	95.83	599,493.33	(427.50)
133859	313385ES1	555	FHLB D N	3/13/2009	4/23/2009		0.180%	0.180%	500,000	499,897.50	47.50	499,511.11	(433.89)
133860	313397EZ0	555	FHLMC D N	3/13/2009	4/30/2009		0.230%	0.230%	284,000	283,912.91	34.47	283,633.96	(313.42)
133766	313385FD3	555	FHLB D N	3/9/2009	5/4/2009		0.250%	0.250%	500,000	499,805.56	79.86	499,266.67	(618.75)
134164	313385FD3	555	FHLB D N	3/31/2009	5/4/2009		0.200%	0.200%	750,000	749,858.33	4.17	748,900.00	(962.50)
<b>555 Total</b>									<b>5,730,000</b>	<b>5,728,533.33</b>	<b>826.55</b>	<b>5,725,405.34</b>	<b>(3,954.54)</b>
134165	313385DU7	700	FHLB D N	3/31/2009	4/1/2009		0.010%	0.010%	13,000,000	12,999,996.39	3.61	13,000,000.00	0.00
133079	3136F93W1	700	FNMA STEP UP	1/28/2009	1/28/2011	4/28/2009	1.250%	1.255%	1,000,000	999,900.00	2,187.50	999,687.50	(212.50)
<b>700 Total</b>									<b>14,000,000</b>	<b>13,999,896.39</b>	<b>2,191.11</b>	<b>13,999,687.50</b>	<b>(212.50)</b>
131679	313589DU4	712	FNMA D N	11/6/2008	4/1/2009		1.400%	1.408%	3,017,000	2,999,870.14	17,129.86	3,017,000.00	0.00
134031	313385DV5	712	FHLB D N	3/25/2009	4/2/2009		0.150%	0.150%	694,000	693,976.87	20.24	693,969.16	(27.95)
133736	313385DZ6	712	FHLB D N	3/5/2009	4/6/2009		0.220%	0.220%	462,500	462,409.56	76.31	462,397.22	(88.65)
132472	313397DZ1	712	FHLMC D N	12/17/2008	4/6/2009		0.300%	0.300%	695,000	694,362.92	608.12	694,845.56	(125.48)
132971	313385EA0	712	FHLB D N	1/21/2009	4/7/2009		0.355%	0.355%	2,000,000	1,998,501.11	1,380.56	1,999,466.67	(415.00)
132967	313589EB5	712	FNMA D N	1/21/2009	4/8/2009		0.380%	0.380%	1,850,000	1,848,496.36	1,366.95	1,849,424.44	(438.87)
134033	313589DT7	712	FNMA D N	3/25/2009	4/9/2009		0.150%	0.150%	400,000	399,975.00	11.67	399,857.78	(128.89)
133572	313313ED6	712	FFCB D N	2/26/2009	4/10/2009		0.300%	0.300%	375,000	374,865.63	106.25	374,850.00	(121.88)
134053	313589EG4	712	FNMA D N	3/26/2009	4/13/2009		0.050%	0.050%	3,532,000	3,531,911.70	29.43	3,530,116.27	(1,824.86)
130876	313385EH5	712	FHLB D N	9/18/2008	4/14/2009		2.700%	2.743%	649,000	638,875.60	9,491.63	648,625.02	257.79
134122	313385EH5	712	FHLB D N	3/30/2009	4/14/2009		0.060%	0.060%	2,800,000	2,799,930.00	9.33	2,798,382.22	(1,557.11)
134082	313385EJ1	712	FHLB D N	3/27/2009	4/15/2009		0.120%	0.120%	874,000	873,944.65	14.57	873,456.18	(503.04)
134181	313385EK8	712	FHLB D N	3/31/2009	4/16/2009		0.100%	0.100%	1,020,600	1,020,554.64	2.84	1,019,919.60	(637.88)
133256	313397EK3	712	FHLMC D N	2/5/2009	4/16/2009		0.400%	0.400%	583,000	582,546.56	356.27	582,611.33	(291.50)
133912	313397EL1	712	FHLMC D N	3/18/2009	4/17/2009		0.150%	0.150%	1,293,800	1,293,638.28	75.47	1,292,879.96	(833.79)
134034	313397EL1	712	FHLMC D N	3/25/2009	4/17/2009		0.150%	0.157%	210,000	209,979.88	6.12	209,850.67	(135.33)
133945	313397EP2	712	FHLMC D N	3/19/2009	4/20/2009		0.200%	0.200%	560,000	559,900.44	40.45	559,527.11	(413.78)
128029	3133XQV66	712	FHLB BULLET	4/25/2008	4/21/2009		2.520%	2.727%	5,000,000	4,994,986.15	56,000.00	5,006,250.00	11,263.85
133874	313589ER0	712	FNMA D N	3/16/2009	4/22/2009		0.200%	0.200%	262,000	261,946.14	23.29	261,755.47	(213.96)
133573	313397ES6	712	FHLMC D N	2/26/2009	4/23/2009		0.350%	0.350%	457,000	456,751.19	151.06	456,553.16	(349.09)
132445	313397FE6	712	FHLMC D N	12/17/2008	5/5/2009		0.400%	0.401%	2,078,800	2,075,589.41	2,425.27	2,075,658.70	(2,355.98)
132916	313385FT8	712	FHLB D N	1/15/2009	5/18/2009		0.400%	0.401%	500,000	499,316.67	422.22	498,955.56	(783.33)
132969	313385GB6	712	FHLB D N	1/21/2009	5/26/2009		0.420%	0.421%	500,000	499,270.83	408.34	498,777.78	(901.39)
133253	313385GE0	712	FHLB D N	2/5/2009	5/29/2009		0.400%	0.401%	3,004,000	3,000,228.31	1,835.78	2,996,256.36	(5,807.73)
132655	313385GJ9	712	FHLB D N	12/31/2008	6/2/2009		0.350%	0.351%	700,000	698,958.75	619.31	697,709.44	(1,868.62)
132353	313589GJ6	712	FNMA D N	12/12/2008	6/2/2009		0.340%	0.341%	338,000	337,450.94	351.14	336,893.99	(908.09)
132915	313589GS6	712	FNMA D N	1/15/2009	6/10/2009		0.400%	0.401%	500,000	499,188.89	422.22	498,152.78	(1,458.33)
128883	3133XRHF0	712	FHLB - BULLET	6/10/2008	6/10/2009		2.730%	2.730%	3,000,000	3,000,000.00	25,252.50	3,013,125.00	13,125.00
133255	313589HA4	712	FNMA D N	2/5/2009	6/18/2009		0.500%	0.501%	480,000	479,113.33	366.67	478,024.00	(1,456.00)
132975	313397HF1	712	FHLMC D N	1/21/2009	6/23/2009		0.470%	0.471%	200,000	199,600.50	182.78	199,123.89	(659.39)
133203	313397HV6	712	FHLMC D N	2/3/2009	7/7/2009		0.510%	0.511%	1,278,000	1,275,211.83	1,031.99	1,271,113.00	(5,130.82)
132917	313385JD9	712	FHLB D N	1/15/2009	7/15/2009		0.380%	0.381%	2,500,000	2,495,223.61	2,005.56	2,485,416.67	(11,812.50)
132903	313385JJ6	712	FHLB D N	1/15/2009	7/20/2009		0.390%	0.391%	279,600	279,036.61	230.20	277,891.33	(1,375.48)
132970	313397JJ1	712	FHLMC D N	1/21/2009	7/20/2009		0.500%	0.501%	910,000	907,725.00	884.72	904,438.89	(4,170.83)
129824	31331Y4Q0	712	FFCB - BULLET	7/24/2008	7/24/2009		2.950%	2.950%	4,745,000	4,745,000.00	26,051.37	4,782,070.31	37,070.31
132979	313397KN0	712	FHLMC D N	1/21/2009	8/17/2009		0.550%	0.552%	500,000	498,411.11	534.72	496,128.33	(2,817.50)
132900	313397LD1	712	FHLMC D N	1/15/2009	9/1/2009		0.440%	0.441%	2,000,000	1,994,402.22	1,857.78	1,982,745.00	(13,515.00)
132267	313385LS3	712	FHLB D N	12/8/2008	9/14/2009		0.900%	0.906%	3,426,200	3,402,216.60	9,764.67	3,394,128.86	(17,852.41)
132339	313385LW4	712	FHLB D N	12/11/2008	9/18/2009		0.550%	0.552%	2,500,000	2,489,267.36	4,239.58	2,476,034.72	(17,472.22)

**MIAMI-DADE COUNTY**  
**REPORT WRITER**  
**AS OF DATE: March 31, 2009**  
**SORTING ORDER: FUND ICC#**

INVSMT NUMBER	CUSIP NUMBER	FUND NUMBER	DESCRIPTION	PURCHASE SET DATE	MATURITY DATE	CALL DATE	INTEREST RATE	YTM TRADING	SCHEDULED PAR VALUE	CURRENT BOOK VALUE	PERIOD-END INTEREST ACCRL	MARKET VALUE	UNREALIZED GAIN/LOSS
132901	313397MC2	712	FHLMC D N	1/15/2009	9/24/2009		0.450%	0.451%	2,000,000	1,993,700.00	1,900.00	1,980,151.11	(15,448.89)
132643	313397MJ7	712	FHLMC D N	12/31/2008	9/30/2009		0.650%	0.653%	2,500,000	2,487,677.08	4,107.64	2,474,469.44	(17,315.28)
133068	313397MJ7	712	FHLMC D N	12/30/2008	9/30/2009		0.650%	0.653%	2,000,000	1,990,105.56	3,322.22	1,979,575.56	(13,852.22)
132913	313385MT0	712	FHLB D N	1/15/2009	10/9/2009		0.580%	0.582%	3,000	2,987.10	3.67	2,967.85	(22.92)
132564	3128X8BP6	712	FHLMC C I	12/23/2008	12/23/2009	6/23/2009	1.200%	1.200%	6,000,000	6,000,000.00	19,600.00	6,005,625.00	5,625.00
132623	3128X8DH2	712	FHLMC C I	12/30/2008	12/30/2009	6/30/2009	1.000%	1.000%	1,000,000	1,000,000.00	2,527.78	1,000,312.50	312.50
132648	3128X8DH2	712	FHLMC C I	12/31/2008	12/30/2009	6/30/2009	1.000%	1.000%	2,500,000	2,500,069.44	6,319.44	2,500,781.25	781.25
130259	31331Y6H8	712	FFCB - BULLET	8/18/2008	2/18/2010		3.150%	3.150%	3,000,000	3,000,000.00	11,287.50	3,056,250.00	56,250.00
127271	31398APK2	712	FNMA BULLET	3/12/2008	3/5/2010		3.050%	3.050%	1,000,000	1,000,000.00	2,202.77	1,017,812.50	17,812.50
132336	31331GGS2	712	FFCB - BULLET	12/11/2008	6/11/2010		2.000%	2.000%	3,000,000	3,000,000.00	18,333.33	3,028,125.00	28,125.00
132607	3128X8CD2	712	FHLMC C I	12/30/2008	12/30/2010	6/30/2009	2.125%	2.125%	2,000,000	2,000,000.00	10,743.06	2,002,500.00	2,500.00
132878	3136F93G6	712	FNMA STEP UP	1/14/2009	1/14/2011	7/14/2009	1.250%	1.250%	5,000,000	5,000,000.00	13,368.06	5,001,562.50	1,562.50
132934	31331GKS7	712	FFCB C I	1/20/2009	1/20/2011	4/20/2009	1.620%	1.620%	4,000,000	4,000,000.00	12,780.00	4,001,250.00	1,250.00
133080	3136F93W1	712	FNMA STEP UP	1/28/2009	1/28/2011	4/28/2009	1.250%	1.255%	2,000,000	1,999,800.00	4,375.00	1,999,375.00	(425.00)
133050	3128X8FM9	712	FHLMC C I	1/27/2009	1/27/2012	1/27/2010	2.000%	2.000%	3,000,000	3,000,000.00	10,666.67	2,993,437.50	(6,562.50)
		<b>712 Total</b>							<b>95,177,500</b>	<b>95,046,973.97</b>	<b>287,324.38</b>	<b>95,138,577.64</b>	<b>23,856.21</b>
132951	313398DV8	713	FHLMC D N	1/20/2009	4/2/2009		0.340%	0.340%	1,100,000	1,099,252.00	737.61	1,099,951.11	(38.50)
133661	313589DV2	713	FNMA D N	3/3/2009	4/2/2009		0.240%	0.240%	1,186,800	1,186,562.64	229.45	1,186,747.25	(44.84)
132441	313397DZ1	713	FHLMC D N	12/17/2008	4/6/2009		0.300%	0.300%	1,000,000	999,083.33	875.00	999,777.78	(180.55)
133574	313397EA5	713	FHLMC D N	2/26/2009	4/7/2009		0.290%	0.290%	900,000	899,710.00	246.50	899,760.00	(196.50)
133407	313385EH5	713	FHLB D N	2/18/2009	4/14/2009		0.400%	0.400%	400,000	399,755.56	186.66	399,768.89	(173.33)
133201	313397EH0	713	FHLMC D N	2/3/2009	4/14/2009		0.351%	0.351%	1,000,000	999,317.50	555.75	999,422.22	(451.03)
134083	313385EJ1	713	FHLB D N	3/27/2009	4/15/2009		0.120%	0.120%	558,000	557,964.66	9.30	557,652.80	(321.16)
134119	313385EK8	713	FHLB D N	3/30/2009	4/16/2009		0.080%	0.080%	585,000	584,977.90	2.60	584,610.00	(370.50)
133913	313397EL1	713	FHLMC D N	3/18/2009	4/17/2009		0.150%	0.150%	326,200	326,159.23	19.03	325,968.04	(210.22)
133835	313385EP7	713	FHLB D N	3/12/2009	4/20/2009		0.230%	0.230%	811,000	810,797.93	103.63	810,315.16	(586.40)
132443	313397EP2	713	FHLMC D N	12/17/2008	4/20/2009		0.400%	0.401%	448,700	448,081.79	523.48	448,321.10	(284.17)
133404	313385EQ5	713	FHLB D N	2/18/2009	4/21/2009		0.450%	0.450%	350,000	349,728.75	183.75	349,688.89	(223.61)
134115	313589EQ2	713	FNMA D N	3/30/2009	4/21/2009		0.090%	0.090%	623,100	623,065.73	3.12	622,546.13	(522.72)
132897	313385FA9	713	FHLB D N	1/15/2009	5/1/2009		0.300%	0.300%	3,365,000	3,362,027.58	2,131.17	3,360,513.33	(3,645.42)
132446	313397FE6	713	FHLMC D N	12/17/2008	5/5/2009		0.400%	0.401%	909,200	907,795.79	1,060.73	907,826.10	(1,030.42)
133475	313589FE8	713	FNMA D N	2/20/2009	5/5/2009		0.370%	0.386%	500,000	499,619.72	205.56	499,244.44	(580.84)
134063	313385FG6	713	FHLB D N	3/26/2009	5/7/2009		0.160%	0.160%	556,000	555,896.21	14.83	555,110.40	(800.64)
134168	313313FT0	713	FFCB D N	3/31/2009	5/18/2009		0.100%	0.100%	1,073,000	1,072,856.93	2.98	1,070,758.62	(2,101.29)
132898	313385GC4	713	FHLB D N	1/15/2009	5/27/2009		0.360%	0.360%	1,395,000	1,393,158.60	1,060.20	1,391,528.00	(2,690.80)
133206	313589GH0	713	FNMA D N	2/3/2009	6/1/2009		0.470%	0.471%	2,050,000	2,046,841.86	1,525.54	2,043,400.14	(4,967.26)
133513	313397GJ4	713	FHLMC D N	2/24/2009	6/2/2009		0.400%	0.400%	880,000	879,041.78	352.00	877,120.44	(2,273.34)
132354	313589GJ6	713	FNMA D N	12/12/2008	6/2/2009		0.340%	0.341%	11,000	10,982.13	11.43	10,964.01	(29.55)
133840	313589GJ6	713	FNMA D N	3/12/2009	6/2/2009		0.320%	0.320%	2,750,000	2,747,995.56	488.89	2,741,001.39	(7,483.06)
133472	313397GM7	713	FHLMC D N	2/20/2009	6/5/2009		0.450%	0.451%	500,000	499,343.75	250.00	498,284.72	(1,309.03)
132976	313397HF1	713	FHLMC D N	1/21/2009	6/23/2009		0.470%	0.471%	1,094,000	1,091,814.74	999.79	1,089,207.67	(3,606.86)
133742	313397HG9	713	FHLMC D N	3/6/2009	6/24/2009		0.400%	0.400%	108,100	107,967.88	31.23	107,620.76	(378.35)
132954	313385HM1	713	FHLB D N	1/20/2009	6/29/2009		0.442%	0.443%	1,423,000	1,420,204.60	1,240.46	1,416,315.85	(5,129.21)
133744	313397HP9	713	FHLMC D N	3/6/2009	7/1/2009		0.410%	0.411%	1,500,000	1,498,001.25	444.17	1,492,416.67	(6,028.75)
133839	313397HU8	713	FHLMC D N	3/12/2009	7/6/2009		0.450%	0.451%	560,000	559,188.00	140.00	557,013.33	(2,314.67)
133204	313397HV6	713	FHLMC D N	2/3/2009	7/7/2009		0.510%	0.511%	153,000	152,666.21	123.55	152,175.50	(614.26)
132904	313385JL6	713	FHLB D N	1/15/2009	7/20/2009		0.390%	0.391%	2,307,800	2,303,149.78	1,900.09	2,293,696.78	(11,353.09)
132980	313397KN0	713	FHLMC D N	1/21/2009	8/17/2009		0.550%	0.552%	1,000,000	996,822.22	1,069.45	992,256.67	(5,635.00)
132268	313385LS3	713	FHLB D N	12/8/2008	9/14/2009		0.900%	0.906%	1,073,800	1,066,283.40	3,060.33	1,063,748.64	(5,595.09)
132340	313385LW4	713	FHLB D N	12/11/2008	9/18/2009		0.550%	0.552%	2,500,000	2,489,267.36	4,239.58	2,476,034.72	(17,472.22)
132644	313397MJ7	713	FHLMC D N	12/31/2008	9/30/2009		0.650%	0.653%	1,000,000	995,070.83	1,643.06	989,787.78	(6,926.11)
132647	3128X8DH2	713	FHLMC C I	12/31/2008	12/30/2009	6/30/2009	1.000%	1.000%	1,720,000	1,720,047.78	4,347.78	1,720,537.50	537.50
133374	3136FHAQ8	713	FNMA STEP UP	2/17/2009	2/17/2012	2/17/2010	2.000%	2.000%	1,500,000	1,500,000.00	3,666.67	1,505,156.25	5,156.25
		<b>713 Total</b>							<b>39,217,700</b>	<b>39,160,500.98</b>	<b>33,685.37</b>	<b>39,096,249.08</b>	<b>(89,875.04)</b>

**MIAMI-DADE COUNTY**  
**REPORT WRITER**  
**AS OF DATE: March 31, 2009**  
**SORTING ORDER: FUND ICC#**

INVSMT NUMBER	CUSIP NUMBER	FUND NUMBER	DESCRIPTION	PURCHASE SET DATE	MATURITY DATE	CALL DATE	INTEREST RATE	YTM TRADING	SCHEDULED PAR VALUE	CURRENT BOOK VALUE	PERIOD-END INTEREST ACRL	MARKET VALUE	UNREALIZED GAIN/LOSS
133786	313385DV5	714	FHLB D N	3/10/2009	4/2/2009		0.200%	0.200%	1,000,000	999,872.22	122.22	999,955.56	(38.88)
133957	313589DV2	714	FNMA D N	3/19/2009	4/2/2009		0.140%	0.140%	1,135,000	1,134,938.21	57.38	1,134,949.56	(46.03)
134092	313589DW0	714	FNMA D N	3/27/2009	4/3/2009		0.060%	0.060%	3,000,000	2,999,965.00	25.00	2,999,733.33	(256.67)
133737	313385DZ6	714	FHLB D N	3/5/2009	4/6/2009		0.220%	0.220%	3,817,500	3,816,753.47	629.88	3,816,651.67	(731.68)
133891	313589DZ3	714	FNMA D N	3/17/2009	4/6/2009		0.200%	0.200%	1,300,000	1,299,855.56	108.33	1,299,711.11	(252.78)
133809	313385EA0	714	FHLB D N	3/11/2009	4/7/2009		0.200%	0.200%	325,700	325,651.15	37.99	325,613.15	(75.99)
133892	313397EA5	714	FHLMC D N	3/17/2009	4/7/2009		0.150%	0.150%	3,500,000	3,499,693.75	218.75	3,499,066.67	(845.83)
133849	313313EB0	714	FFCB D N	3/13/2009	4/8/2009		0.180%	0.180%	1,000,000	999,870.00	95.00	999,688.89	(276.11)
133855	313589EC3	714	FNMA D N	3/13/2009	4/9/2009		0.180%	0.180%	1,900,000	1,899,743.50	180.50	1,899,324.44	(599.56)
133856	313589EC3	714	FNMA D N	3/13/2009	4/9/2009		0.210%	0.210%	5,392,000	5,391,150.76	597.61	5,390,082.84	(1,665.53)
134093	313589EC3	714	FNMA D N	3/27/2009	4/9/2009		0.050%	0.050%	2,000,000	1,999,963.89	13.89	1,999,288.89	(688.89)
134054	313589EG4	714	FNMA D N	3/26/2009	4/13/2009		0.050%	0.050%	11,468,000	11,467,713.30	95.57	11,461,883.73	(5,925.14)
134176	313589EG4	714	FNMA D N	3/31/2009	4/13/2009		0.070%	0.070%	8,542,000	8,541,784.08	16.61	8,537,444.27	(4,356.42)
134085	313313EH7	714	FFCB D N	3/27/2009	4/14/2009		0.050%	0.050%	800,000	799,980.00	5.56	799,537.78	(447.78)
133946	313397EJ6	714	FHLMC D N	3/19/2009	4/15/2009		0.150%	0.150%	2,900,000	2,899,673.75	157.08	2,898,195.56	(1,635.27)
133959	313589EJ8	714	FNMA D N	3/19/2009	4/15/2009		0.120%	0.120%	1,229,000	1,228,889.39	53.26	1,228,235.29	(707.36)
133998	313589EJ8	714	FNMA D N	3/23/2009	4/15/2009		0.100%	0.100%	4,143,000	4,142,735.31	103.57	4,140,422.13	(2,416.75)
133890	313385EK8	714	FHLB D N	3/17/2009	4/16/2009		0.200%	0.200%	1,430,000	1,429,761.67	119.17	1,429,046.67	(834.17)
134095	313385EK8	714	FHLB D N	3/27/2009	4/16/2009		0.050%	0.050%	873,000	872,975.75	6.06	872,418.00	(563.81)
134120	313385EK8	714	FHLB D N	3/30/2009	4/16/2009		0.050%	0.050%	4,500,000	4,499,893.75	12.50	4,497,000.00	(2,906.25)
134094	313397EP2	714	FHLMC D N	3/27/2009	4/20/2009		0.150%	0.150%	599,000	598,940.10	12.48	598,494.18	(458.40)
134087	313589EP4	714	FNMA D N	3/27/2009	4/20/2009		0.050%	0.050%	1,200,000	1,199,960.00	8.33	1,198,986.67	(981.66)
134086	313385ET9	714	FHLB D N	3/27/2009	4/24/2009		0.050%	0.050%	5,000,000	4,999,805.56	34.72	4,994,888.89	(4,951.39)
134089	313397EX5	714	FHLMC D N	3/27/2009	4/28/2009		0.060%	0.060%	1,800,000	1,799,904.00	15.00	1,797,840.00	(2,079.00)
134166	313313EZ7	714	FFCB D N	3/31/2009	4/30/2009		0.060%	0.060%	5,975,000	5,974,701.25	9.96	5,967,298.89	(7,412.32)
134090	313397FE6	714	FHLMC D N	3/27/2009	5/5/2009		0.150%	0.150%	3,300,000	3,299,463.75	68.75	3,295,013.33	(4,519.17)
134189	313397FM8	714	FHLMC D N	3/31/2009	5/12/2009		0.150%	0.150%	5,000,000	4,999,125.00	20.83	4,990,888.89	(8,256.94)
134020	313313FT0	714	FFCB D N	3/24/2009	5/18/2009		0.180%	0.180%	1,731,500	1,731,023.84	69.26	1,727,883.09	(3,210.01)
134169	313313FT0	714	FFCB D N	3/31/2009	5/18/2009		0.100%	0.100%	3,773,000	3,772,496.93	10.48	3,765,118.62	(7,388.79)
134091	313397FT3	714	FHLMC D N	3/27/2009	5/18/2009		0.170%	0.170%	1,416,000	1,415,652.29	33.43	1,413,042.13	(2,643.59)
134117	313589FT5	714	FNMA D N	3/30/2009	5/18/2009		0.120%	0.120%	2,000,000	1,999,673.33	13.33	1,995,822.22	(3,864.44)
134179	313589FT5	714	FNMA D N	3/31/2009	5/18/2009		0.150%	0.150%	2,500,000	2,499,500.00	10.42	2,494,777.78	(4,732.64)
<b>714 Total</b>									<b>94,549,700</b>	<b>94,541,110.56</b>	<b>2,962.92</b>	<b>94,468,304.23</b>	<b>(75,769.25)</b>
131400	313385DU7	740	FHLB D N	10/16/2008	4/1/2009		2.700%	2.734%	12,165,000	12,012,633.38	152,366.62	12,165,000.00	0.00
133445	313385DU7	740	FHLB D N	2/19/2009	4/1/2009		0.300%	0.300%	12,590,000	12,585,698.42	4,301.58	12,590,000.00	0.00
133966	313385DU7	740	FHLB D N	3/19/2009	4/1/2009		0.100%	0.100%	8,000,000	7,999,711.11	288.89	8,000,000.00	0.00
134190	313385DU7	740	FHLB D N	3/31/2009	4/1/2009		0.010%	0.010%	4,586,000	4,585,998.73	1.27	4,586,000.00	0.00
131940	313397DU2	740	FHLMC D N	11/20/2008	4/1/2009		1.400%	1.407%	13,253,000	13,184,967.93	68,032.07	13,253,000.00	0.00
132894	313397DU2	740	FHLMC D N	1/15/2009	4/1/2009		0.210%	0.210%	12,591,000	12,585,417.99	5,582.01	12,591,000.00	0.00
134213	313397DU2	740	FHLMC D N	12/18/2008	4/1/2009		0.200%	0.200%	12,593,800	12,586,523.59	7,276.41	12,593,800.00	0.00
131963	313589DU4	740	FNMA D N	11/20/2008	4/1/2009		1.400%	1.407%	50,000,000	49,743,333.33	256,666.67	50,000,000.00	0.00
131964	313589DU4	740	FNMA D N	11/20/2008	4/1/2009		1.400%	1.407%	250,000	248,716.67	1,283.33	250,000.00	0.00
131961	313385MK9	740	FHLB D N	11/20/2008	10/1/2009		1.980%	2.015%	50,000,000	49,133,750.00	363,000.00	49,486,583.33	(10,166.67)
131962	313385MK9	740	FHLB D N	11/20/2008	10/1/2009		1.980%	2.015%	880,000	864,754.00	6,388.80	870,963.87	(178.93)
<b>740 Total</b>									<b>176,908,800</b>	<b>175,531,505.15</b>	<b>865,187.65</b>	<b>176,386,347.20</b>	<b>(10,345.60)</b>
134212	313397DU2	741	FHLMC D N	12/18/2008	4/1/2009		0.200%	0.208%	200	199.88	0.12	200.00	0.00
133032	313385EG7	741	FHLB D N	1/26/2009	4/13/2009		0.350%	0.350%	138,000	137,896.69	87.21	137,926.40	(57.50)
131941	313397EG2	741	FHLMC D N	11/20/2008	4/13/2009		1.450%	1.458%	81,000	80,530.20	430.65	80,956.80	(4.05)
132552	313397EG2	741	FHLMC D N	12/23/2008	4/13/2009		0.320%	0.320%	90,000	89,911.20	79.20	89,952.00	(38.40)
134007	313397EG2	741	FHLMC D N	3/24/2009	4/13/2009		0.120%	0.120%	82,000	81,994.53	2.19	81,956.27	(40.45)
133756	313589EJ8	741	FNMA D N	3/6/2009	4/15/2009		0.220%	0.220%	33,000	32,991.93	5.25	32,979.47	(17.71)
129602	313385EP7	741	FHLB D N	7/11/2008	4/20/2009		2.600%	2.654%	15,000,000	14,693,416.67	286,000.00	14,987,333.33	7,916.66
129603	313385EP7	741	FHLB D N	7/11/2008	4/20/2009		2.600%	2.654%	928,000	909,032.71	17,693.87	927,216.36	489.78
133239	313385EP7	741	FHLB D N	2/5/2009	4/20/2009		0.400%	0.400%	140,000	139,884.89	85.55	139,881.78	(88.66)

**MIAMI-DADE COUNTY**  
**REPORT WRITER**  
**AS OF DATE: March 31, 2009**  
**SORTING ORDER: FUND ICC#**

INVSMT NUMBER	CUSIP NUMBER	FUND NUMBER	DESCRIPTION	PURCHASE SET DATE	MATURITY DATE	CALL DATE	INTEREST RATE	YTM TRADING	SCHEDULED PAR VALUE	CURRENT BOOK VALUE	PERIOD-END INTEREST ACCRL	MARKET VALUE	UNREALIZED GAIN/LOSS
129154	3133XRP46	741	FHLB - BULLET	6/24/2008	6/23/2009		3.000%	3.059%	6,000,000	5,998,281.49	49,000.00	6,033,750.00	35,468.51
129316	3133XRQ29	741	FHLB BULLET	6/30/2008	6/30/2009		3.000%	3.069%	10,000,000	9,996,657.70	75,833.33	10,062,500.00	65,842.30
132871	313397LD1	741	FHLMC D N	1/14/2009	9/1/2009		0.440%	0.441%	264,000	263,257.87	248.45	261,722.34	(1,783.98)
132347	313385LW4	741	FHLB D N	12/12/2008	9/18/2009		0.550%	0.552%	402,000	400,280.33	675.58	398,146.38	(2,809.53)
132609	3128X8DH2	741	FHLMC C I	12/30/2008	12/30/2009	6/30/2009	1.000%	1.000%	1,460,000	1,460,000.00	3,690.56	1,460,456.25	456.25
134006	313385SA5	741	FHLB D N	3/24/2009	1/20/2010		0.680%	0.684%	453,000	450,415.89	68.45	451,018.13	533.79
127229	31398APK2	741	FNMA C I	3/11/2008	3/5/2010	3/5/2010	3.050%	3.050%	2,130,000	2,130,000.00	4,691.92	2,167,940.63	37,940.63
132346	31331GGS2	741	FFCB - BULLET	12/12/2008	6/11/2010		2.000%	2.000%	6,000,000	6,000,333.33	36,666.66	6,056,250.00	56,250.00
132864	3136F93C5	741	FNMA STEP UP	1/13/2009	7/13/2010	4/13/2009	1.250%	1.250%	2,000,000	2,000,000.00	5,416.67	2,000,000.00	0.00
130968	3133XS6V5	741	FHLB C I	9/24/2008	9/24/2010	9/24/2009	3.300%	3.300%	5,000,000	5,000,000.00	3,208.33	5,048,437.50	48,437.50
132778	3133XSRS9	741	FHLB C I	1/7/2009	1/7/2011	4/13/2009	2.000%	2.000%	2,500,000	2,500,000.00	11,666.67	2,500,000.00	0.00
132779	3133XSRS9	741	FHLB C I	1/7/2009	1/7/2011	4/13/2009	2.000%	2.000%	335,000	335,000.00	1,563.33	335,000.00	0.00
132879	3136F93G6	741	FNMA STEP UP	1/14/2009	1/14/2011	7/14/2009	1.250%	1.250%	8,000,000	8,000,000.00	21,388.89	8,002,500.00	2,500.00
132754	3136F92H5	741	FNMA C I	1/6/2009	7/6/2011	7/6/2009	2.000%	2.000%	5,000,000	5,000,000.00	23,611.11	4,978,125.00	(21,875.00)
132553	3133XSPS1	741	FHLB C I	12/23/2008	12/23/2011	9/23/2009	3.000%	3.000%	10,000,000	10,000,000.00	81,666.67	10,015,625.00	15,625.00
133236	31331GKY4	741	FFCB - BULLET	2/5/2009	1/17/2012		2.000%	2.220%	4,000,000	3,979,205.96	16,666.66	4,010,000.00	35,016.26
132937	3128X8EL2	741	FHLMC C I	1/20/2009	1/20/2012	1/20/2011	2.200%	2.200%	5,000,000	5,000,000.00	21,694.44	5,031,250.00	31,016.25
133266	3136FHAB1	741	FNMA STEP UP	2/6/2009	2/6/2012	5/6/2009	2.000%	2.000%	7,000,000	7,000,000.00	21,388.89	7,004,375.00	4,375.00
133373	3136FHAQ8	741	FNMA STEP UP	2/17/2009	2/17/2012	2/17/2010	2.000%	2.000%	2,100,000	2,100,000.00	5,133.33	2,107,218.75	7,218.75
133005	3133XSV62	741	FHLB C I	1/22/2009	1/22/2013	7/22/2009	2.625%	2.629%	800,000	799,880.00	4,025.00	800,750.00	870.00
134005	31331GGU7	741	FFCB C I	3/24/2009	12/23/2013	6/23/2009	4.000%	3.842%	11,550,000	11,744,699.63	125,766.66	11,596,921.88	(30,994.43)
		<b>741 Total</b>							<b>106,486,200</b>	<b>106,323,870.90</b>	<b>818,455.64</b>	<b>106,800,389.27</b>	<b>292,480.72</b>
132434	313397KN0	742	FHLMC D N	12/16/2008	8/17/2009		0.700%	0.703%	51,000	50,758.03	105.12	50,605.09	(258.06)
		<b>742 Total</b>							<b>51,000</b>	<b>50,758.03</b>	<b>105.12</b>	<b>50,605.09</b>	<b>(258.06)</b>
134123	313385DV5	756	FHLB D N	3/30/2009	4/2/2009		0.100%	0.100%	200,000	199,998.33	1.11	199,991.11	(8.33)
134171	313589DV2	756	FNMA D N	3/31/2009	4/2/2009		0.050%	0.050%	112,000	111,999.69	0.16	111,995.02	(4.83)
134132	313397DZ1	756	FHLMC D N	3/30/2009	4/6/2009		0.100%	0.100%	605,000	604,988.24	3.36	604,865.56	(126.04)
134177	313589EG4	756	FNMA D N	3/31/2009	4/13/2009		0.070%	0.070%	600,000	599,984.83	1.17	599,680.00	(306.00)
134182	313385EK8	756	FHLB D N	3/31/2009	4/16/2009		0.100%	0.100%	229,400	229,389.80	0.64	229,247.07	(143.37)
134127	313385EQ5	756	FHLB D N	3/30/2009	4/21/2009		0.150%	0.150%	300,000	299,972.50	2.50	299,733.33	(241.67)
		<b>756 Total</b>							<b>2,046,400</b>	<b>2,046,333.39</b>	<b>8.94</b>	<b>2,045,512.09</b>	<b>(830.24)</b>
134262	825252869	760	AIM MONEY MARKET - D	3/1/2009	4/1/2009		0.306%	0.306%	61,191,253	61,191,253.20	16,126.00	61,191,253.20	0.00
133287	313397EG2	760	FHLMC D N	2/9/2009	4/13/2009		0.350%	0.350%	2,500,000	2,498,468.75	1,239.58	2,498,666.67	(1,041.66)
133999	313589EJ8	760	FNMA D N	3/23/2009	4/15/2009		0.100%	0.100%	857,000	856,945.25	21.42	856,466.76	(499.91)
133997	313397EL1	760	FHLMC D N	3/23/2009	4/17/2009		0.150%	0.150%	244,000	243,974.58	9.15	243,826.49	(157.24)
131656	313385FD3	760	FHLB D N	11/5/2008	5/4/2009		1.900%	1.918%	2,000,000	1,981,000.00	15,516.67	1,997,066.67	550.00
132447	313397FE6	760	FHLMC D N	12/17/2008	5/5/2009		0.400%	0.401%	12,000	11,981.47	14.00	11,981.87	(13.60)
133254	313385GE0	760	FHLB D N	2/5/2009	5/29/2009		0.400%	0.401%	2,246,000	2,243,180.02	1,372.56	2,240,210.31	(4,342.27)
132355	313589GJ6	760	FNMA D N	12/12/2008	6/2/2009		0.340%	0.341%	2,341,000	2,337,197.18	2,432.04	2,333,339.73	(6,289.49)
133841	313589GS6	760	FNMA D N	3/12/2009	6/10/2009		0.320%	0.320%	1,000,000	999,200.00	177.78	996,305.56	(3,072.22)
128885	3133XRHF0	760	FHLB - BULLET	6/10/2008	6/10/2009		2.730%	2.730%	2,000,000	2,000,000.00	16,835.00	2,008,750.00	8,750.00
132977	313397HF1	760	FHLMC D N	1/21/2009	6/23/2009		0.470%	0.471%	206,000	205,588.52	188.26	205,097.61	(679.17)
129155	3133XRP46	760	FHLB - BULLET	6/24/2008	6/23/2009		3.000%	3.059%	5,000,000	4,998,567.91	40,833.33	5,028,125.00	29,557.09
129201	3133XRN82	760	FHLB - BULLET	6/25/2008	6/25/2009		3.150%	3.150%	5,000,000	5,000,000.00	42,000.00	5,031,250.00	31,250.00
132950	313385HN9	760	FHLB D N	1/20/2009	6/30/2009		0.500%	0.501%	300,000	299,329.17	295.83	298,500.00	(1,125.00)
132442	313397HN4	760	FHLMC D N	12/17/2008	6/30/2009		0.520%	0.521%	3,200,000	3,190,986.67	4,853.33	3,184,000.00	(11,840.00)
129315	3133XRQ29	760	FHLB BULLET	6/30/2008	6/30/2009		3.000%	3.069%	5,000,000	4,998,328.85	37,916.67	5,031,250.00	32,921.15
133514	313397HU8	760	FHLMC D N	2/24/2009	7/6/2009		0.500%	0.501%	1,446,000	1,443,349.00	723.00	1,438,288.00	(5,784.00)
133731	313397HU8	760	FHLMC D N	3/5/2009	7/6/2009		0.400%	0.401%	746,000	744,980.47	223.80	742,021.33	(3,182.94)
133205	313397HV6	760	FHLMC D N	2/3/2009	7/7/2009		0.510%	0.511%	96,000	95,790.56	77.52	95,482.67	(385.41)
132905	313385JJ6	760	FHLB D N	1/15/2009	7/20/2009		0.390%	0.391%	212,600	212,171.61	175.04	211,300.78	(1,045.87)
133729	313397LZ2	760	FHLMC D N	3/5/2009	9/21/2009		0.600%	0.602%	2,000,000	1,993,333.33	900.00	1,980,489.44	(13,743.89)
134185	313397MG3	760	FHLMC D N	3/31/2009	9/28/2009		0.420%	0.421%	611,000	609,709.77	7.13	604,828.90	(4,888.00)
133730	313385MH6	760	FHLB D N	3/5/2009	9/29/2009		0.600%	0.602%	1,500,000	1,494,800.00	675.00	1,484,765.83	(10,709.17)

**MIAMI-DADE COUNTY**  
**REPORT WRITER**  
**AS OF DATE: March 31, 2009**  
**SORTING ORDER: FUND ICC#**

INVSMT NUMBER	CUSIP NUMBER	FUND NUMBER	DESCRIPTION	PURCHASE SET DATE	MATURITY DATE	CALL DATE	INTEREST RATE	YTM TRADING	SCHEDULED PAR VALUE	CURRENT BOOK VALUE	PERIOD-END INTEREST ACCRL	MARKET VALUE	UNREALIZED GAIN/LOSS
132645	313397MJ7	760	FHLMC D N	12/31/2008	9/30/2009		0.650%	0.653%	500,000	497,535.42	821.53	494,893.89	(3,463.06)
133069	313397MJ7	760	FHLMC D N	12/30/2008	9/30/2009		0.650%	0.653%	1,000,000	995,052.78	1,661.11	989,787.78	(6,926.11)
132949	313589MK6	760	FNMA D N	1/20/2009	10/1/2009		0.600%	0.603%	1,000,000	995,766.67	1,183.33	989,731.67	(7,218.33)
134180	313589MK6	760	FNMA D N	3/31/2009	10/1/2009		0.600%	0.602%	500,000	498,466.67	8.33	494,865.83	(3,609.17)
134167	313313MR6	760	FFCB D N	3/31/2009	10/7/2009		0.500%	0.501%	200,000	199,472.22	2.78	197,889.50	(1,585.50)
134118	313589MR1	760	FNMA D N	3/30/2009	10/7/2009		0.450%	0.451%	2,005,000	2,000,213.06	50.13	1,983,736.98	(16,526.22)
127744	3133XQN65	760	FHLB BULLET	4/7/2008	10/7/2009		2.600%	2.603%	5,000,000	4,999,833.94	62,833.33	5,043,750.00	43,916.06
132914	313385MT0	760	FHLB D N	1/15/2009	10/9/2009		0.580%	0.583%	4,017,000	3,999,720.21	4,918.59	3,973,948.92	(30,689.88)
132958	313589MX8	760	FNMA D N	1/20/2009	10/13/2009		0.580%	0.582%	2,500,000	2,489,286.11	2,859.72	2,472,645.83	(19,500.00)
133241	313589MX8	760	FNMA D N	2/5/2009	10/13/2009		0.700%	0.703%	1,500,000	1,492,708.33	1,604.17	1,483,587.50	(10,725.00)
132899	313385MZ6	760	FHLB D N	1/15/2009	10/15/2009		0.550%	0.552%	5,000,000	4,979,145.83	5,805.56	4,944,730.56	(40,220.83)
132624	3128X8DH2	760	FHLMC C I	12/30/2008	12/30/2009	6/30/2009	1.000%	1.000%	1,000,000	1,000,000.00	2,527.78	1,000,312.50	312.50
130260	31331Y6H8	760	FFCB - BULLET	8/18/2008	2/18/2010		3.150%	3.150%	2,000,000	2,000,000.00	7,525.00	2,037,500.00	37,500.00
127212	31398APK2	760	FNMA BULLET	3/10/2008	3/5/2010		3.050%	3.050%	6,000,000	6,000,000.00	13,216.67	6,106,875.00	106,875.00
127272	31398APK2	760	FNMA BULLET	3/12/2008	3/5/2010		3.050%	3.050%	9,000,000	9,000,000.00	19,825.00	9,160,312.50	160,312.50
129484	31331Y2P4	760	FFCB - BULLET	7/7/2008	7/7/2010		3.300%	3.300%	4,000,000	4,000,000.00	30,800.00	4,108,750.00	108,750.00
129897	31331Y4G2	760	FFCB C I	7/28/2008	7/28/2010	7/28/2009	3.300%	3.300%	5,000,000	5,000,000.00	28,875.00	5,039,062.50	39,062.50
132935	31331GKS7	760	FFCB C I	1/20/2009	1/20/2011	4/20/2009	1.620%	1.620%	2,000,000	2,000,000.00	6,390.00	2,000,625.00	625.00
132810	31331GJQ3	760	FFCB C I	1/9/2009	7/7/2011	4/15/2009	2.000%	2.000%	3,000,000	3,000,333.33	14,000.00	2,994,375.00	(6,625.00)
		<b>760 Total</b>							<b>154,930,853</b>	<b>154,797,670.88</b>	<b>387,521.14</b>	<b>155,230,647.78</b>	<b>385,492.86</b>
134178	313589EG4	778	FNMA D N	3/31/2009	4/13/2009		0.070%	0.070%	410,000	409,989.64	0.80	409,781.33	(209.11)
133733	313385EH5	778	FHLB D N	3/5/2009	4/14/2009		0.220%	0.220%	1,400,000	1,399,657.78	231.00	1,399,191.11	(697.67)
133911	313397EL1	778	FHLMC D N	3/18/2009	4/17/2009		0.200%	0.200%	600,000	599,900.00	46.67	599,573.33	(373.34)
133741	313385FN1	778	FHLB D N	3/5/2009	5/13/2009		0.300%	0.300%	450,000	449,741.25	101.25	449,160.00	(682.50)
133734	313385GX8	778	FHLB D N	3/5/2009	6/15/2009		0.400%	0.400%	400,000	399,546.67	120.00	398,416.67	(1,250.00)
		<b>778 Total</b>							<b>3,260,000</b>	<b>3,258,835.34</b>	<b>499.72</b>	<b>3,256,122.44</b>	<b>(3,212.62)</b>
134264	825252869	779	AIM MONEY MARKET - D	3/1/2009	4/1/2009		0.305%	0.305%	15,004,060	15,004,059.77	3,937.07	15,004,059.77	0.00
132952	313398DV8	779	FHLMC D N	1/20/2009	4/2/2009		0.340%	0.340%	1,075,000	1,074,269.00	720.85	1,074,952.22	(37.63)
133662	313589DV2	779	FNMA D N	3/3/2009	4/2/2009		0.240%	0.240%	2,898,200	2,897,620.36	560.32	2,898,071.19	(109.49)
133516	313397DZ1	779	FHLMC D N	2/24/2009	4/6/2009		0.360%	0.360%	800,000	799,672.00	288.00	799,822.22	(137.78)
133810	313385EA0	779	FHLB D N	3/11/2009	4/7/2009		0.200%	0.200%	386,300	386,242.06	45.06	386,196.99	(90.13)
133575	313397EA5	779	FHLMC D N	2/26/2009	4/7/2009		0.290%	0.290%	900,000	899,710.00	246.50	899,760.00	(196.50)
133202	313397EH0	779	FHLMC D N	2/3/2009	4/14/2009		0.351%	0.351%	1,000,000	999,317.50	555.75	999,422.22	(451.03)
134084	313385EJ1	779	FHLB D N	3/27/2009	4/15/2009		0.120%	0.120%	68,000	67,995.69	1.13	67,957.69	(39.13)
132348	313385EP7	779	FHLB D N	12/12/2008	4/20/2009		0.250%	0.250%	725,000	724,350.52	553.82	724,387.78	(516.56)
133274	313385EP7	779	FHLB D N	2/6/2009	4/20/2009		0.400%	0.400%	265,000	264,785.06	159.00	264,776.22	(167.84)
133836	313385EP7	779	FHLB D N	3/12/2009	4/20/2009		0.230%	0.230%	989,000	988,753.57	126.37	988,164.84	(715.10)
132444	313397EP2	779	FHLMC D N	12/17/2008	4/20/2009		0.400%	0.401%	151,300	151,091.54	176.52	151,172.24	(95.82)
134128	313385E05	779	FHLB D N	3/30/2009	4/21/2009		0.150%	0.150%	200,000	199,981.67	1.67	199,822.22	(161.12)
134116	313589EQ2	779	FNMA D N	3/30/2009	4/21/2009		0.090%	0.090%	38,900	38,897.86	0.19	38,865.42	(32.63)
133474	313385ER3	779	FHLB D N	2/20/2009	4/22/2009		0.420%	0.420%	600,000	599,573.00	280.00	599,440.00	(413.00)
134055	313589EX7	779	FNMA D N	3/26/2009	4/28/2009		0.160%	0.160%	351,000	350,948.52	9.36	350,578.80	(379.08)
134062	313385FE1	779	FHLB D N	3/26/2009	5/5/2009		0.170%	0.170%	600,000	599,886.67	17.00	599,093.33	(810.34)
134130	313397FF3	779	FHLMC D N	3/30/2009	5/6/2009		0.150%	0.150%	200,000	199,969.17	1.67	199,688.89	(281.95)
134121	313385FG6	779	FHLB D N	3/30/2009	5/7/2009		0.180%	0.180%	590,000	589,887.90	5.90	589,056.00	(837.80)
134056	313397FL0	779	FHLMC D N	3/26/2009	5/11/2009		0.200%	0.200%	599,000	598,846.92	19.97	597,935.11	(931.78)
133808	313385FQ4	779	FHLB D N	3/11/2009	5/15/2009		0.470%	0.470%	194,000	193,835.37	53.19	193,620.62	(267.94)
134021	313313FT0	779	FFCB D N	3/24/2009	5/18/2009		0.180%	0.179%	1,500	1,499.59	0.06	1,496.87	(2.78)
134170	313313FT0	779	FFCB D N	3/31/2009	5/18/2009		0.100%	0.100%	718,000	717,904.27	1.99	716,500.18	(1,406.08)
134051	313589FT5	779	FNMA D N	3/26/2009	5/18/2009		0.250%	0.250%	750,000	749,723.96	31.25	748,433.33	(1,321.88)
134081	313589FT5	779	FNMA D N	3/27/2009	5/18/2009		0.180%	0.180%	300,000	299,922.00	7.50	299,373.33	(556.17)
134052	313589FU2	779	FNMA D N	3/26/2009	5/19/2009		0.220%	0.220%	780,000	779,742.60	28.60	778,336.00	(1,435.20)
133512	313397GH8	779	FHLMC D N	2/24/2009	6/1/2009		0.400%	0.400%	1,700,000	1,698,167.78	680.00	1,694,526.94	(4,320.84)
132356	313589GJ6	779	FNMA D N	12/12/2008	6/2/2009		0.340%	0.341%	2,310,000	2,306,247.53	2,399.84	2,302,441.17	(6,206.20)

**MIAMI-DADE COUNTY**  
**REPORT WRITER**  
**AS OF DATE: March 31, 2009**  
**SORTING ORDER: FUND ICC#**

INVSMT NUMBER	CUSIP NUMBER	FUND NUMBER	DESCRIPTION	PURCHASE SET DATE	MATURITY DATE	CALL DATE	INTEREST RATE	YTM TRADING	SCHEDULED PAR VALUE	CURRENT BOOK VALUE	PERIOD-END INTEREST ACCRL	MARKET VALUE	UNREALIZED GAIN/LOSS
133473	313397GM7	779	FHLMC D N	2/20/2009	6/5/2009		0.450%	0.451%	500,000	499,343.75	250.00	498,284.72	(1,309.03)
133726	313589GS6	779	FNMA D N	3/5/2009	6/10/2009		0.400%	0.400%	810,000	809,127.00	243.00	807,007.50	(2,362.50)
134131	313397HE4	779	FHLMC D N	3/30/2009	6/22/2009		0.250%	0.250%	1,000,000	999,416.67	13.89	995,672.22	(3,758.34)
132978	313397HF1	779	FHLMC D N	1/21/2009	6/23/2009		0.470%	0.471%	500,000	499,001.25	456.94	497,809.72	(1,648.47)
133743	313397HG9	779	FHLMC D N	3/6/2009	6/24/2009		0.400%	0.400%	891,900	890,809.90	257.66	887,945.91	(3,121.65)
132955	313385HM1	779	FHLB D N	1/20/2009	6/29/2009		0.442%	0.443%	1,577,000	1,573,902.07	1,374.71	1,569,592.48	(5,684.30)
133515	313397HU8	779	FHLMC D N	2/24/2009	7/6/2009		0.500%	0.501%	54,000	53,901.00	27.00	53,712.00	(216.00)
133732	313397HU8	779	FHLMC D N	3/5/2009	7/6/2009		0.400%	0.401%	154,000	153,789.53	46.20	153,178.67	(657.06)
134022	313397JY8	779	FHLMC D N	3/24/2009	8/3/2009		0.360%	0.360%	2,056,000	2,053,286.08	164.48	2,041,694.81	(11,755.75)
132981	313397KN0	779	FHLMC D N	1/21/2009	8/17/2009		0.550%	0.552%	500,000	498,411.11	534.72	496,128.33	(2,817.50)
132646	313397MJ7	779	FHLMC D N	12/31/2008	9/30/2009		0.650%	0.653%	1,000,000	995,070.83	1,643.06	989,787.78	(6,926.11)
132936	31331GKS7	779	FFCB C I	1/20/2009	1/20/2011	4/20/2009	1.620%	1.620%	2,000,000	2,000,000.00	6,390.00	2,000,625.00	625.00
132811	31331GJQ3	779	FFCB C I	1/9/2009	7/7/2011	4/15/2009	2.000%	2.000%	2,000,000	2,000,222.22	9,333.33	1,996,250.00	(3,750.00)
		<b>779 Total</b>							<b>47,237,160</b>	<b>47,209,183.29</b>	<b>31,643.57</b>	<b>47,155,640.73</b>	<b>(65,303.51)</b>
134172	313589DV2	796	FNMA D N	3/31/2009	4/2/2009		0.050%	0.050%	64,500	64,499.82	0.09	64,497.13	(2.78)
		<b>796 Total</b>							<b>64,500</b>	<b>64,499.82</b>	<b>0.09</b>	<b>64,497.13</b>	<b>(2.78)</b>
134126	313385DV5	1010	FHLB D N	3/30/2009	4/2/2009		0.070%	0.070%	300,000	299,998.25	1.17	299,986.67	(12.75)
134173	313589DV2	1010	FNMA D N	3/31/2009	4/2/2009		0.050%	0.050%	407,000	406,998.87	0.57	406,981.91	(17.53)
134133	313313EC8	1010	FFCB D N	3/30/2009	4/9/2009		0.100%	0.100%	400,000	399,988.89	2.22	399,857.78	(133.33)
134129	313385EQ5	1010	FHLB D N	3/30/2009	4/21/2009		0.150%	0.150%	100,000	99,990.83	0.83	99,911.11	(80.55)
		<b>1010 Total</b>							<b>1,207,000</b>	<b>1,206,976.84</b>	<b>4.79</b>	<b>1,206,737.47</b>	<b>(244.16)</b>
134174	313589DV2	1015	FNMA D N	3/31/2009	4/2/2009		0.050%	0.049%	44,500	44,499.88	0.06	44,498.02	(1.92)
		<b>1015 Total</b>							<b>44,500</b>	<b>44,499.88</b>	<b>0.06</b>	<b>44,498.02</b>	<b>(1.92)</b>
134289	316175108	1022	MONEY MARKET - DCAD	3/1/2009	4/1/2009		0.586%	0.586%	103,166	103,165.70	52.07	103,165.70	0.00
		<b>1022 Total</b>							<b>103,166</b>	<b>103,165.70</b>	<b>52.07</b>	<b>103,165.70</b>	<b>0.00</b>
134183	313385DU7	1024	FHLB D N	3/31/2009	4/1/2009		0.010%	0.010%	11,522,000	11,521,996.80	3.20	11,522,000.00	0.00
134186	313397MJ7	1024	FHLMC D N	3/31/2009	9/30/2009		0.420%	0.421%	12,089,000	12,063,189.99	141.04	11,965,544.45	(97,786.58)
		<b>1024 Total</b>							<b>23,611,000</b>	<b>23,585,186.79</b>	<b>144.24</b>	<b>23,487,544.45</b>	<b>(97,786.58)</b>
134134	313313DU9	1027	FFCB D N	3/30/2009	4/1/2009		0.050%	0.050%	1,952,000	1,951,994.58	5.42	1,952,000.00	0.00
134184	313385DU7	1027	FHLB D N	3/31/2009	4/1/2009		0.010%	0.010%	2,164,000	2,163,999.40	0.60	2,164,000.00	0.00
134188	313397MG3	1027	FHLMC D N	3/31/2009	9/28/2009		0.435%	0.436%	2,153,000	2,148,291.21	26.02	2,131,254.70	(17,062.53)
134187	313397MJ7	1027	FHLMC D N	3/31/2009	9/30/2009		0.420%	0.421%	2,168,000	2,163,371.32	25.29	2,145,859.90	(17,536.71)
		<b>1027 Total</b>							<b>8,437,000</b>	<b>8,427,656.51</b>	<b>57.33</b>	<b>8,393,114.60</b>	<b>(34,599.24)</b>
134274	825252869	1029	AIM MONEY MARKET - D	3/19/2009	4/1/2009		0.310%	0.310%	5,500,000	5,500,000.00	615.36	5,500,000.00	0.00
134275	825252869	1029	AIM MONEY MARKET - D	3/31/2009	4/1/2009		0.310%	0.310%	5,900,000	5,900,000.00	50.78	5,900,000.00	0.00
133045	313397EK3	1029	FHLMC D N	1/26/2009	4/16/2009		0.390%	0.390%	5,000,000	4,995,666.67	3,520.83	4,996,666.67	(2,520.83)
132649	313385EP7	1029	FHLB D N	12/31/2008	4/20/2009		0.100%	0.100%	15,000,000	14,995,416.67	3,791.66	14,987,333.33	(11,875.00)
133273	313397GC9	1029	FHLMC D N	2/6/2009	5/27/2009		0.445%	0.446%	5,000,000	4,993,201.39	3,337.50	4,987,555.56	(8,983.33)
		<b>1029 Total</b>							<b>36,400,000</b>	<b>36,384,284.73</b>	<b>11,316.13</b>	<b>36,371,555.56</b>	<b>(23,379.16)</b>
134282	825252869	1030	AIM MONEY MARKET - D	3/19/2009	4/1/2009		0.283%	0.283%	6,200,000	6,200,000.00	632.72	6,200,000.00	0.00
134283	825252869	1030	AIM MONEY MARKET - D	3/26/2009	4/1/2009		0.283%	0.283%	58,900,000	58,900,000.00	2,774.22	58,900,000.00	0.00
134175	313589DV2	1030	FNMA D N	3/31/2009	4/2/2009		0.050%	0.048%	52,000	51,999.86	0.07	51,997.69	(2.24)
134001	313397EL1	1030	FHLMC D N	3/23/2009	4/17/2009		0.150%	0.150%	785,000	784,918.23	29.44	784,441.78	(505.89)
		<b>1030 Total</b>							<b>65,937,000</b>	<b>65,936,918.09</b>	<b>3,436.45</b>	<b>65,936,439.47</b>	<b>(508.13)</b>
		<b>Grand Total</b>							<b>4,007,467,920</b>	<b>3,989,376,075.62</b>	<b>17,791,824.08</b>	<b>4,000,465,577.91</b>	<b>1,273,193.24</b>